

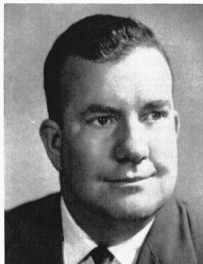


An egg farm of the type operated at Palatine, Ill., will be constructed at the Woodhaven Home.

Fitzgerald Memorial Has X Factor

On an egg farm operated by retarded children in Palatine, Ill., the initial flock of 3,000 hens laid more than 100 per cent for nearly three continuous weeks. Poultrymen say that this is an almost unheard of record. "The X factor," said a psychologist, "was tender, loving care."

The friends of the late W. Lyle Fitzgerald (BS '47, AM '49) are



W. Lyle Fitzgerald

working to put this X factor in a similar operation to be installed at the Woodhaven Home near Columbia. They have established a memorial fund to Dr. Fitzgerald for funds to build, equip and stock an egg farm to provide occupational training for the retarded children at Woodhaven. Billy Fitzgerald, 10, is a resident there.

The Little City Training & Treatment Center at Palatine has found its egg farm valuable because it brings the children in contact with living things.

An article in the Fall 1966 *Farm Quarterly* explained it this way. "It offers a great many work operations ranging from very simple jobs, such as sweeping or feeding, to tasks demanding considerable manual dexterity, such as candling, weighing, and packaging of eggs, and on to social relations situations such as meeting the public, selling the eggs, making change and recording the sales.

"Working at the egg farm is the most sought-after privilege for the sheltered workshop group—there is nothing abstract or symbolic about the work. The feed is real, they see it, they put it in the trough, they see the eggs laid, they feel them, package them. They care."

The Woodhaven project will be built as soon as funds are available. The Fitzgerald Memorial has a goal of \$10,000. Plans for the egg farm are being prepared by the University's College of Agriculture.

Missouri alumni on the Fitzgerald committee include Norman R. Clizer, Western Springs, Ill., who has been active in the Palatine program; Charles H. Dixon, Western Springs, Ill.; Paul N. Doll, Jefferson City, Mo.; Robert D. Hines, Hamilton, Mo.; Dean Elmer R. Kiehl, of the Ag School; Gene R. Waite, Eldon, Mo.; and Paul Zillman, Hinsdale, Ill.

W. Lyle Fitzgerald died Jan. 9 after a short illness. At the time of his death he was manager of economic research for the Quaker Oats Co. in Chicago.

His principal civic interests included public speaking, raising funds for handicapped children, and local government.

During World War II he received the Silver Star while fighting in the Philippines.

Dr. Fitzgerald is survived by his wife, the former LeNora Klinefelter (BS '46), who has returned to Columbia to live, two children at home, Nancy and James, and, of course, Billy.