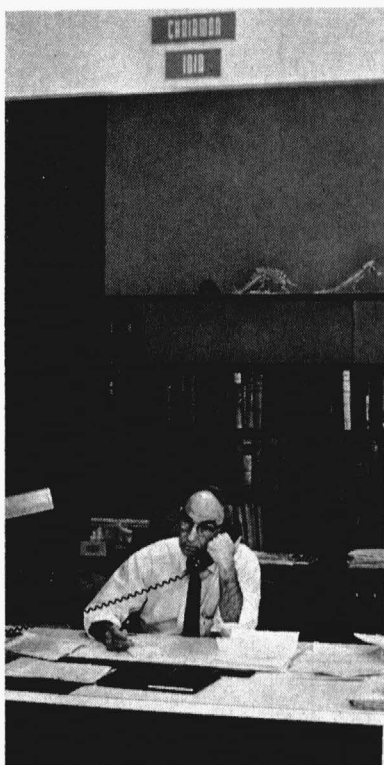




GEOLOGY'S NEW HOME





Dr. A. G. Unklesbay, pictured above in his new office, is chairman of the department. At right, the Col. C. M. Jenni and E. J. Palmer collections of mineral specimens being restored to their cases after removal from Swallow Hall.



The two views on the opposite page are of the new home of the University's Department of Geology. In the foreground of the top view is the lecture hall which, as may be noted in the lower photo, is separated by a glassed-in lobby from the main building, which has four floors. The construction was completed in September at a cost of \$1,319,000, made possible by an appropriation of \$1,000,000 from the Missouri Legislature and a grant of \$319,000 from the National Science Foundation for research facilities.

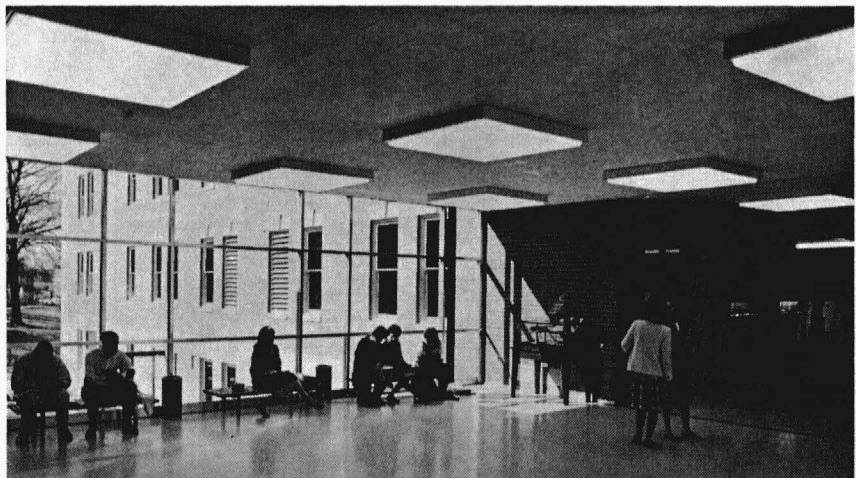
The new home for geology is located at the northwest corner of Francis Quadrangle just west of the circular drive which runs by the Journalism buildings. Swallow Hall, built in 1893, home of the Department of Geology until last fall, quickly acquired new tenants.

The move to the University Geology Building was in three stages: first, the desks, furniture and equipment; next, the library of 12,000 volumes; then the collections totaling more than 30,000 mineral and rock specimens and 15,000 fossils. Dr. A. G. Unklesbay, chairman of the Department of Geology, listed these as among the benefits provided by the new building: Adequate teaching facilities, including satisfactory laboratories and lecture halls; space for research and research collections; rooms for microscopic research; special rooms in which graduate students can do their research and studying; display cases for collections that may be viewed by the public; and offices for faculty and staff.

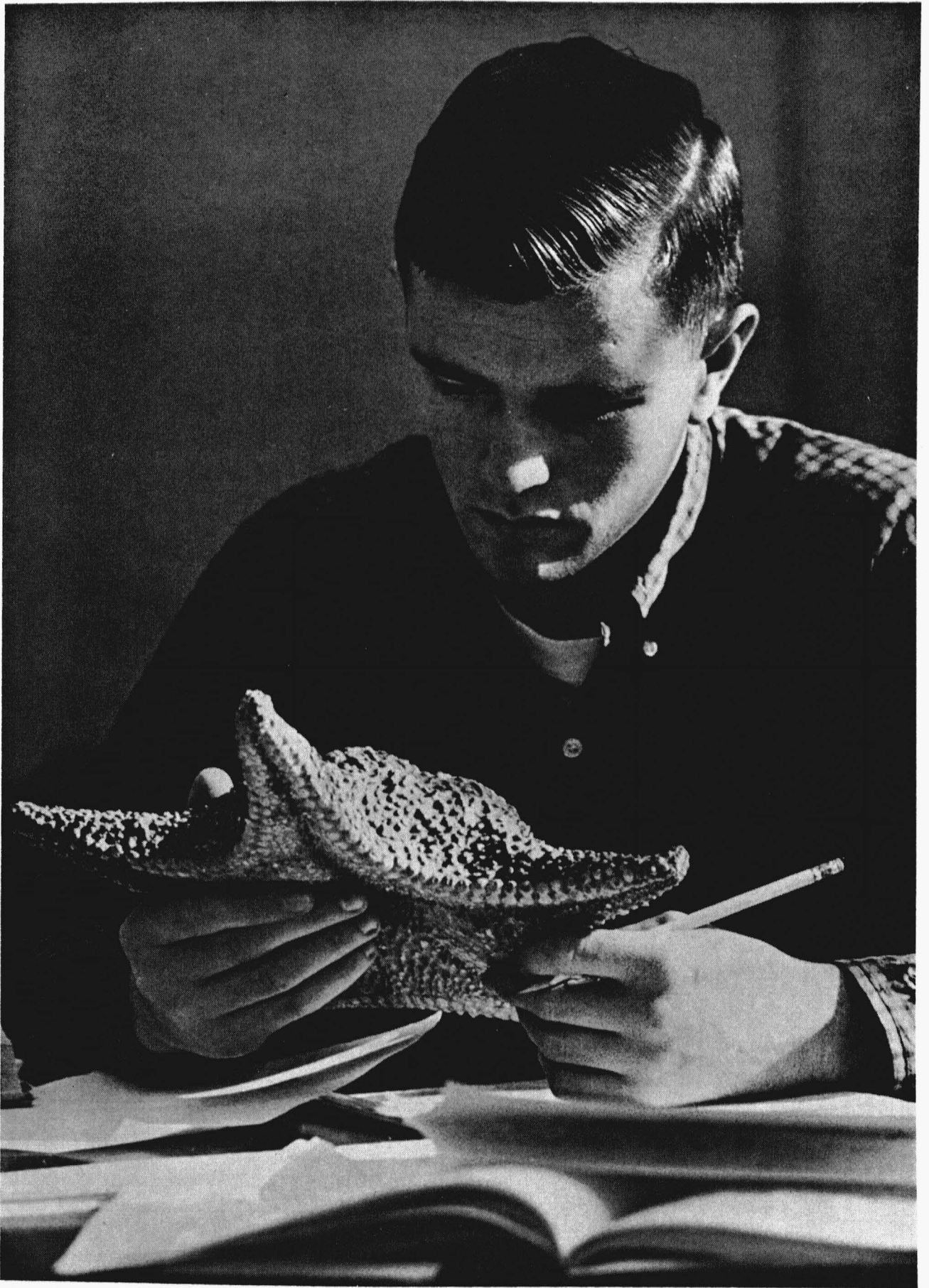
Occupying 50,000 square feet of land, the structure contains 22 teaching and research laboratories.



Mastodon leg bone collected in Perche Creek is displayed in the lobby. The department's adopted mascot, Ralph, finds this particular spot ideal for relaxing.



The glassed-in lobby is connecting link between main building on the right and lecture hall on the south.



This fossil starfish undergoes close scrutiny by a student in Paleontology.



Students learning rock identification in elementary geology laboratory at left. Above, display cases of fossils, minerals and rocks line corridor walls of first two floors.



The lecture hall, separated by a lobby from the main building, has a seating capacity of 350 persons. It was filled almost to capacity for this lecture period. Chalkboard extends width of the stage.