

MIZZOU

The magazine of
the Mizzou Alumni Association

[Home](#) » [Winter 2011](#) » [Around the Columns](#) » Beetle Bailey delivers

Around the Columns

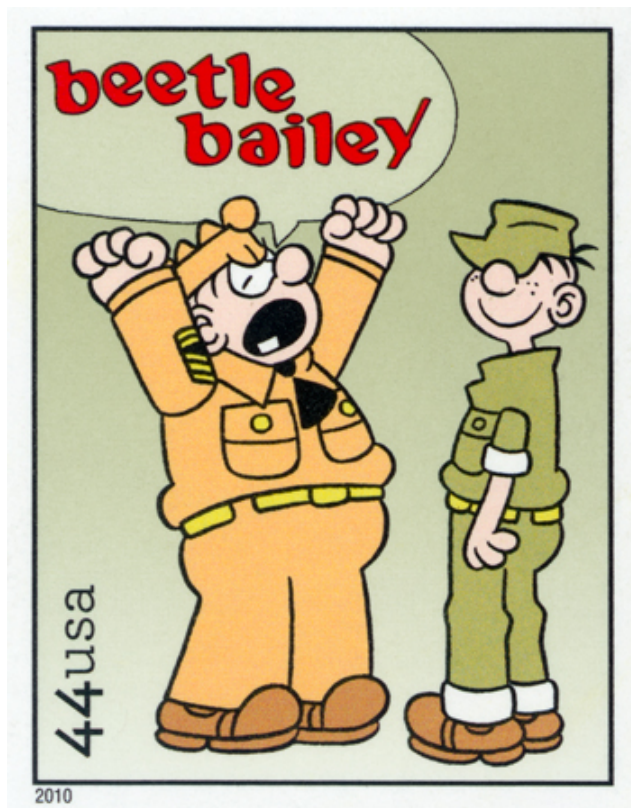
Beetle Bailey delivers

Beetle Bailey's days as the laziest man in the Army have come to an end. Don't worry, the 60-year-old cartoon strip by Mort Walker, BA '48, continues. But on July 16, 2010, Beetle was assigned to the U.S. Postal Service, which enshrined him on a stamp that day. From now on, he'll have to slog along with mail carriers daily through rain and snow to help in the swift completion of their appointed rounds.

On Aug. 27, 2010, at the bronze Beetle Bailey statue in front of the Reynolds Alumni Center, alumni, friends, campus administrators and postal service representatives gathered to celebrate the new stamp, which features Sarge ranting at the ever-calm private. The stamp is part of a Sunday Funnies series, which includes *Dennis the Menace*, *Garfield*, *Calvin and Hobbes*, and *Archie*.




The likeness of Beetle Bailey figures large on the campus landscape. Not only did Walker's son Neal create the bronze sculpture of Beetle ensconced in a booth at The Shack, but Ellis

Library also holds several of Walker's original strips. To boot, a statue of the lazy private greets visitors to Mort's Lounge at the new MU Student Center. Walker dedicated the lounge Oct. 22, 2010. [Check out video](#) of his visit.



Sarge goes postal on Beetle Bailey, the creation of Mort Walker, BA '48. The U.S. Postal Service celebrates the popular strip in a set of five Sunday Funnies stamps.

More 2011 Around the Columns »

 [Follow us on Twitter](#)  [Join us on Facebook](#)  [Subscribe to our feed](#)

Published by MIZZOU magazine, 109 Reynolds Alumni Center, Columbia, MO 65211 | Phone: 573-882-5916
| E-mail: Mizzou@missouri.edu

Opinions expressed in this site do not necessarily reflect the official position of MU or the Mizzou Alumni Association.

Copyright © 2021 — Curators of the [University of Missouri](#). All rights reserved. [DMCA](#) and other [copyright information](#).

An [equal opportunity/affirmative action](#) institution.

Last updated: Feb. 15, 2013