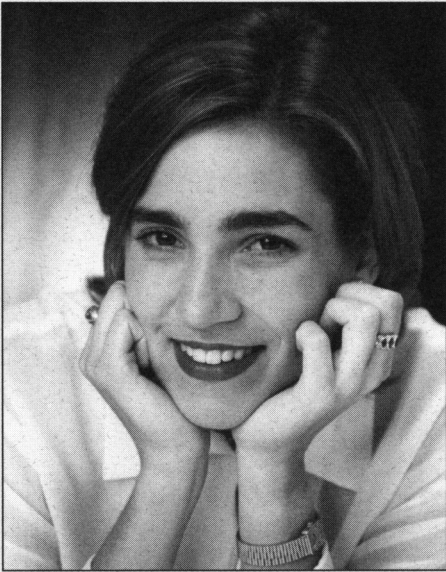


*Friends
of
Music*

Department of Music

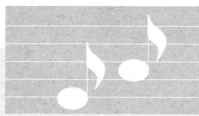


University of Missouri
Columbia



Sara Graham, Crystal City

My education at the University of Missouri - Columbia would not be possible without the monetary aid provided by the Friends of Music scholarship. I have grown immensely, not only as a musician, but also as an individual at MU. I attribute this growth to the excellent music faculty who are committed to teaching and inspiring students. Life as a musician is always difficult and never financially secure, but I hope that someday I will be in a position to freely help musicians as the Friends of Music has helped me. This program allows young musicians like me to study at MU who would otherwise never fully realize their dreams at a university. I genuinely thank you for your support and encouragement.



Friends of Music

1997

The *Friends of Music* was formed in 1978 by a dedicated group of music lovers to increase scholarship funding for the Department of Music at MU. Since then, a total of \$671,441.01 has been contributed for music scholarships. In Spring 1996, *Friends of Music* provided over \$40,000 for music scholarships in the 1996-97 academic year. The *Friends of Music* scholarship campaign has a goal of raising \$46,000 annually to be used in attracting the most qualified performers to MU.

As a *Friend of Music*, you publicly state your recognition of the importance of the musical arts and the programs of the Department of Music to the University and the Mid-Missouri area. Your contribution makes it possible to establish scholarships for talented young musicians and enriches the environment for the musical arts on campus and in Mid-Missouri. A contribution received before June 30 will ensure your name appears in the list of contributors in Concert Series programs.

Friends of **Music scholarship facts**

- For the 1996-97 academic year, 44 students received *Friends of Music* scholarships.
- Although many music majors receive music scholarships, many talented musicians from other academic divisions receive music scholarships also.
- *Friends of Music* scholarships range from \$300 to \$3,000.
- Scholarships are awarded to students based on their musical ability and the needs of the music department for performers to maintain a balanced program.
- Scholarships enable us to be more competitive in attracting the best and brightest to MU. Approximately 80 percent of prospective students to whom music scholarships were offered last year are now attending MU.



Lindsey
Miller,
Lee's Summit

As a contributor to
the *Friends of Music* you will receive:

- The satisfaction of helping talented students receive a music education at MU while improving the quality of performing ensembles and the environment for music in Mid-Missouri
- Advance notice of ticket sales for the Department of Music opera productions
- Announcements of music performances presented each term on campus by the Department of Music
- Invitations to receptions held in conjunction with special events or performances given by the Department of Music
- The Department of Music newsletter, *Music at Mizzou*

Contribution Plan

| | |
|-------------------------|------------|
| Angel (Adopt-a-student) | \$4,000.00 |
| Saint | \$2,000.00 |
| Benefactor | \$1,000.00 |
| Scholarship Sponsor | \$ 500.00 |
| Scholarship Donor | \$ 250.00 |
| Scholarship Patron Plus | \$ 150.00 |
| Scholarship Patron | \$ 100.00 |
| Sustaining Member | \$ 50.00 |
| Contributing Member | \$ 25.00 |

*All donations are tax deductible
to the extent allowed by law.*

The *Friends of Music* is organized within the framework of MU's College of Arts and Science Development Office.



About Department

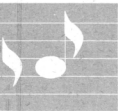
Music has had a role in the life of the University since the founding of the institution over 150 years ago. During those early years in Columbia, the University's musical activity was limited to a men's glee club and a military band, which performed in parades and at athletic contests.

From this simple beginning, the music program has developed into a fully accredited Department of Music whose 30 faculty members provide musical instruction for 225 music majors pursuing a full complement of bachelor's and master's degrees in music. Degrees in music education, ranging from the baccalaureate to the doctorate, are offered in cooperation with the College of Education.

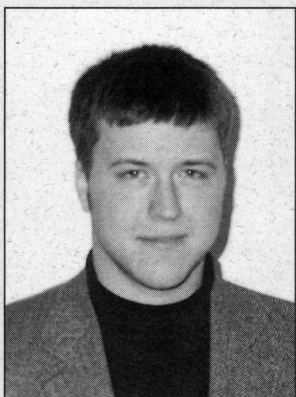


Wen Shen, St. Louis

The music department also meets the academic and musical needs of many non-music majors. Each semester more than 1,000 University students enroll in music courses.



t the nt of Music



Todd Gill, Jefferson City

In addition to academic work, the Department of Music presents more than 200 concerts, recitals, master classes, workshops, clinics, and lectures each year, not including numerous appearances by various units of Marching Mizzou at athletic contests. In a typical year, many thousands see and hear groups from the Department of Music in live performances and on

regional and national television.

Universities throughout the United States compete for talented high-school musicians. These students

are the most actively recruited of all high-school graduates with the exception of athletes. The goal of *Friends of Music* is to increase funding available for music scholarships in order to attract a greater number of the most highly qualified student performers to the University.



Kathleen Sander, Moberly



Service
**to the musical life
of Missouri**

Performances

Faculty Solo Recitals

Student Recitals

Concerts by Student Ensembles:
University Singers, Concert Chorale,
Chamber Singers, Opera Workshop,
Hitt Street Harmony

University Philharmonic, Wind Ensemble,
Symphonic Band, Concert Band,
Jazz Ensembles,
Wind/String Chamber Ensembles,
Percussion Ensembles

Concerts by Faculty Ensembles-in-Residence:
Esterhazy Quartet
Missouri Quintet

Concerts by University/Community Ensembles:
Choral Union
University Band

Special projects

Missouri String Project
Missouri Summer Music Institute
Junior High Band Camp
Senior High Band Camp
High School Honor Choir
String Seminar
State High School Music Festival
State Applied Music Board
Adult Piano and Guitar Classes

Private music instruction

Provided in all instruments and voice
for University students as well as pre-college
and adult students.



Programs presented for

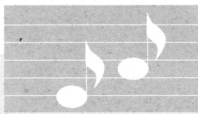
Public schools throughout Mid-Missouri
Professional music organizations
University organizations
Alumni athletic events
Civic organizations
Area churches and colleges
Missouri General Assembly
Governor's inauguration

Host site

Missouri Music Teachers Association
State Convention
American Society of University Composers,
Region 6 Conference
Missouri Federated Music Clubs Junior Festival
Columbia Talent Education Suzuki Workshop
Independent Music Teachers
Great Plains Chapter of the College Music
Society Convention



Matthew Frederickson, Owensville



Friends of
Music Board of Directors

James and Nancy Cassidy - Co-Chairs
William Bondeson - Executive Vice Chair
Kee Groshong - Treasurer
John Bauman
Louise Dohm
Helene Holroyd
Gail Hubbell
Darlene Johnson
Mila Kimel
Pat Lawnick
Sid Leeper
Pauline Marienfeld
Jean McIntosh
Georgia Morehouse
Laura Perez-Mesa
Veva Spier
Sue Troutner
Betty Wilson
Virginia Young
Melvin Platt - Executive Secretary
Christine Churchill
John A. Crouch
Dorinda Derow
Joan Firley
Janice Gaston
Meta George - Special Member
Diane Hennessy
Sue Hill
Leah Beth Kennett
Mildred Knowles
Owen Koeppe
Sandra Norton
Anne-Marie Pickard
James A. Roller
Jimmy Kay Sanders
Dan Scotten
Thomas R. Smith
Eva Szekely
Patricia Wallace - Special Member



Friends of Music

**School of Fine Arts
Department of Music
140 Fine Arts Building
University of Missouri-Columbia
Columbia, MO 65211**

Please write your name as you wish it to be printed in music event programs.

Address

Apt. No.

City

State

ZIP

- Angel (Adopt-a-Student), \$4,000 Saint, \$2,000
 Benefactor, \$1,000 Scholarship Sponsor, \$500 Scholarship Donor, \$250
 Scholarship Patron Plus, \$150 Scholarship Patron, \$100
 Sustaining Member, \$50 Contributing Member, \$25

Please make all checks payable to "MU Friends of Music." Contributions must be received by June 30 in order to appear on the concert series program.

T H E S C H O O L O F
FINE ARTS
ART · MUSIC · THEATRE

