

MIZZOU

Spring 2013

Nursing

News from the University of Missouri Sinclair School of Nursing



The Largest Research Grant in MU History

\$14.8 MILLION



You're invited ...
23rd Annual Nursing Banquet and Awards Ceremony 18

Missouri Gov. Jay Nixon announced a \$150,000 grant to support doctoral nursing education at the MU Sinclair School of Nursing (MU SSON) in a press conference at the school Sept. 20, 2012. The award from state Nurse Education Incentive Funds provides scholarships to prepare teachers of nursing by supporting diverse and traditional doctoral students. The funding also provides for expansions in simulation equipment devoted to helping students learn about vulnerable populations such as persons of color, children and older adults. The funding comes from excess nurse licensing fees collected by the State Board of Nursing. 2012 was the second year the school received a grant from the Nurse Education Incentive Fund.

“Nurses are needed throughout Missouri, and investing in nursing and other health professions enables a healthy Missouri,” said Judith Fitzgerald Miller, MU SSON dean.

Miller and Nixon emphasized the demand in the state and across the nation for nursing education and the fact that more teachers of nursing are required in order to educate these students and meet the need for nurses.

“One thing we know for sure is that employers here in



From left: Sen. Kurt Schaefer, MU Chancellor Brady Deaton, Gov. Jay Nixon and students Zane Black and Lauren Clapp.

Missouri need more nurses,” Nixon said. “That demand is only going to grow in the coming years and that’s good news for students that are here today.” Several members of the state and MU leadership attended the conference: Sen. Kurt Schaefer; Rep. Mary Still; Steve Graham, senior associate vice president, MU Academic Affairs; Marty Oetting, director, MU Governmental Relations; Roxanne McDaniel, MU SSON associate dean; and Kelly Scott, a nurse practitioner in Columbia and member, Missouri State Board of Nursing.

SHOSHANA HERNDON

Students shared research posters at MU Health Sciences Research Day, Nov. 15, 2012.

1 PhD student Sirinat Sriumporn presented the poster, “Children’s Coping with Domestic Violence,” and received the school’s 2012 Dean’s Award. Pictured from left: Sirinat’s mentors, Tina Bloom, MU SSON assistant professor, and Kim Anderson, associate professor in the MU College of Human Environmental Sciences’ School of Social Work; Sriumporn; and Vicki Conn, MU SSON associate dean of research.



2 Gretchen Carlisle, PhD ’12, right, presented a poster on her dissertation topic, “Exploring Interactions with Dogs in Families with Children Who Have Autism Spectrum Disorder.” Also pictured is Rebecca Johnson, MU SSON and MU College of Veterinary Medicine professor and Carlisle’s dissertation advisor.



3 Traditional BSN student Sharon Finn, second from left, presented the poster, “Self-reported Symptoms and Management by Midwestern Breast Cancer Survivors” with health sciences student Allison Gillilan, left, and Madison Krause, right, who began the 5th semester clinicals this spring. Finn received an Ann Crowe Essig Undergraduate Research Mentorship award in summer 2012 and worked with Jane Armer, professor, and Bob Stewart, professor emeritus, on a breast cancer lymphedema



research project. Gillilan and Krause worked with Finn on the project.

SHOSHANA HERNDON

CONTENTS

FEATURES

- 7** DEVELOPING TOMORROW'S NURSE LEADERS ONE PHD STUDENT AT A TIME
- 8** RECOGNITIONS, ACHIEVEMENTS ABOUND FOR NURSING PROFESSOR
- 9** ASSOCIATE DEAN ELECTED PRESIDENT, MO. STATE BOARD OF NURSING
- 10** RECORD-BREAKING GRANT NETTED, AGING POPULATION TO BENEFIT
- 12** SEEING DOUBLE
- 13** AN APP A DAY
- 14** ALUMNI AWARD RECIPIENTS
- 18** BANQUET INVITATION



DEPARTMENTS

- 4** The Power of the Mizzou Connection
- 5** Research & Best Practices
- 20** Alumni President's Letter
- 22** Class Notes
- 25** Publications
- 26** Development



ON THE COVER:
The MU Sinclair School of Nursing CMS grant team includes, from left, Greg Alexander, Marcia Flesner, Marilyn Rantz, Lori Popejoy, Amy Vogelsmeier and Jessica Mueller. Read about the grant, page 10.



JOIN US ON FACEBOOK
facebook.com/MizzouNursing

MIZZOU
Nursing

Vol. 20 No. 1 Spring 2013

EXECUTIVE EDITOR

Dean Judith Fitzgerald Miller, PhD, RN, FAAN

EDITOR/WRITER/PHOTOGRAPHER/DESIGNER

Shoshana Herndon

NURSING ALUMNI ORGANIZATION PRESIDENT

Terry Jackson, BSN '78

Mizzou Nursing is published twice a year for the alumni, students, parents, faculty, staff and friends of the University of Missouri Sinclair School of Nursing.

Direct questions or suggestions for the publication to:
 (573) 884-2690 or
mizzounursing@missouri.edu

Changing address? Send to:
 Mizzou Nursing
 5218 School of Nursing
 Columbia, MO 65211

or email mizzounursing@missouri.edu

The University of Missouri does not discriminate on the basis of race, color, religion, national origin, sex, sexual orientation, age, disability or status as a qualified protected veteran. For more information, call Human Resource Services at (573) 882-4256, the Director of MU Equity/Title IX Coordinator at (573) 882-9069 or the U.S. Department of Education, Office of Civil Rights.

M Sinclair
School of Nursing
 University of Missouri Health System

The Power of the Mizzou Connection

W

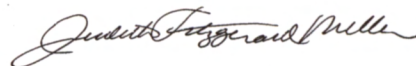
hat a fabulous Sinclair School of Nursing at the University of Missouri! You will find evidence of that statement throughout this issue of Mizzou Nursing. For example, we obtained a transformational grant, larger than any other research grant previously received by this research intensive American Association of Universities member school. Our faculty members have received the highest national and university awards. This year, our faculty and students continued a tradition of leadership. Faculty have been elected to prestigious professional organizations and students represent us nationally, regionally and in the state as well as on Mizzou's Homecoming Court. More details about all these accomplishments are found in this issue.

Dr. Marilyn Rantz and her team of Drs. Greg Alexander, Lori Popejoy, Marcia Flesner, Amy Vogelsmeier and project coordinator Jessica Mueller obtained \$14.8 million from the Centers for Medicare and Medicaid Services (CMS) to implement a model to prevent avoidable hospitalizations of nursing home residents. This four-year project is a demonstration project for the nation and will provide much needed savings for CMS. Dr. Rantz and her Quality Improvement Program for Missouri's Long-term Care Facilities (QIPMO) was chosen to receive the American Academy of Nursing Edge Runner Award. This will be the second Edge Runner Award Marilyn Rantz has received – not matched by any other national leader.

Other indicators of quality and national acclaim include Marilyn Rantz's selection for membership in the Institute of Medicine, one of only six other faculty on MU's campus who are members of the National Academies. Dr. Roxanne McDaniel, associate dean for academic affairs, was elected president of the Missouri State Board of Nursing. Dr. Tina Bloom is a Robert Wood Johnson Scholar and was honored as a Nurse of the Year by the March of Dimes Missouri chapter. Dr. Deidre Wipke-Tevis received the Mizzou Alumni Association Faculty Award. In this issue we have also featured our alumni receiving awards for their accomplishments as well as honorary alumna, Dr. Marjorie Skubic, and our distinguished friend of the school, Richard Miller. These tremendous award recipients all feature a key characteristic – giving of self to achieve significant outcomes in their work and for the Sinclair School of Nursing. How fortunate we are to have them.

Student accomplishments are also highlighted in this issue. Note senior Jessica Loos was successful in the rigorous interview process to be selected for the MU Homecoming Court.

As I have proclaimed repeatedly, the Sinclair School of Nursing is the place to be! Watch us soar with excellent faculty, students, staff and alumni and a university administration that supports our work. Our faculty has an ability to vision the future and then work to create it. We are shaping the health care of older adults as well as care for other vulnerable groups. Join us with support as we continue to grow.



DEAN JUDITH FITZGERALD MILLER
PHD, RN, FAAN

23rd Annual Nursing Banquet and Awards Ceremony

I invite you to join us in honoring the 2013 award recipients mentioned here, as well as faculty, staff and student award recipients at our 23rd Annual Nursing Banquet and Awards Ceremony on Friday, April 5, 2013. You can find your banquet invitation and reply card on page 18.

.....
• Don't you want to join us in our work, celebrations and financial contributions? Support us
• with your donation. (The envelope enclosed is for the alumni banquet; however, donations
• may be made by contacting the Office of Development at 573-884-3775 or
• websters@missouri.edu.)
.....

RESEARCH & BEST PRACTICES

Quick Reference List

Admissions

Office of Academic Affairs

Roxanne McDaniel
573-882-0228
mcdanielr@missouri.edu

Undergraduate & master's programs

573-882-0277
nursing@missouri.edu

PhD program

Deidre Wipke-Tevis
573-884-8441
wipke-tevisd@missouri.edu

DNP program

Debra Gayer
573-882-0295
gayerd@missouri.edu

Dean's Office

Dean Judith Fitzgerald Miller

Linda Huether
573-882-0278
huetherl@missouri.edu

Alumni Relations

Donna Otto
573-884-7293
ottod@missouri.edu

Communications

Shoshana Herndon
573-884-2690
herndons@missouri.edu

Special Events

Sandra Davis
573-882-2416
davissb@missouri.edu

Office of Development

Julie Dorn
573-884-3775
dornj@missouri.edu

Office of Research

Vicki Conn
573-882-0231
conn@missouri.edu

Nursing Outreach

Shirley Farrah
573-882-0215
farrahs@missouri.edu

GRANT PRODUCTIVITY

The value of current multi-year grants in the Sinclair School of Nursing exceeds \$25 million. The most recent grant awards are below.

Jane Armer

Genetic Predisposition to Breast Cancer Lymphedema, Mizzou Advantage \$25,000

Urmeka Jefferson

Infant Feeding Attitudes and Intentions of College Students, Mizzou Alumni Association Richard Wallace Faculty Incentive Grant \$4,000

Judith Fitzgerald Miller

Preparing Diverse and Traditional Faculty for Missouri: Enhancing Student Cultural Competence, Missouri Nursing Education Incentive Fund \$150,000

Marilyn Rantz

Initiative to Reduce Avoidable Hospitalizations Among Nursing Facility Residents, U.S. Department of Health and Human Services Center for Medicare and Medicaid Services \$14,799,711

40TH ANNUAL NATIONAL CONFERENCE ON PROFESSIONAL NURSING EDUCATION AND DEVELOPMENT

Lessons from Oz: Assuring Capabilities

for Future Education & Practice

October 17-20, 2013

Westin Kansas City at Crown Center
Kansas City, Mo.

Sponsored by:

MU Sinclair School of Nursing in cooperation
with the KU School of Nursing

Call for Abstracts:

Abstracts are invited on topics related to the full spectrum of professional nursing education including academic education, staff development and continuing education. Topics may be submitted for panel, podium and poster presentations and special interest group discussions. Submit an abstract and register: www.pneg.info.

Deadline for Abstract Submission:

April 1, 2013

nursingoutreach.missouri.edu



CONFERENCES MU NURSING OUTREACH

Where continuing education and continuing competency meet

2013

- 6th Evidence-based Practice on the Frontline: Building a Culture of Quality, Safety and Nursing Professionalism April 17-18
- 2013 Clinical Oncology Symposium April 26
- 9th Annual Women's Health Update for APNs June 13-14
- 16th Annual Office/Clinic Nursing Update Sept. 19
- 21st Annual Perioperative Clinical Update Oct. 4-5
- 40th Annual Professional Nursing Educators Conference (Kansas City) Oct. 17-20
- 21st Annual Psychiatric-Mental Health Update Nov. 1
- 25th Annual Gerontological Nursing Conference Dec. 5-6

nursingoutreach@missouri.edu



MU Nursing Outreach



MUNursingCE

FACULTY MEMBER'S GOAL – SAFETY FOR MOTHERS AND CHILDREN, EVERYONE

BY SHOSHANA HERNDON

Women in domestic violence situations are often encouraged to seek services such as a shelter or the help of family and friends. However, due to the shame involved in domestic violence, fear and other factors, it is estimated that the majority of women in violent relationships, as many as 95 percent, do not seek out services. Tina Bloom is trying to help these women through technology.

Bloom, an assistant professor, is currently conducting two studies focused on using Internet-based tools to provide women with resources they may not access otherwise. One project funded by the National Institutes of Mental Health involves testing an Internet-based safety planning resource for abused women. Safety planning is a tool used to empower women to find ways to keep themselves and their children safer, whether they are staying or leaving the relationship. The plan may include emergency steps like packing and hiding a suitcase of necessities, what transportation to use, who to call and developing a safety code word to use with family and friends when a violent situation arises. Safety planning also aids women by helping them connect with services they need, such as medical treatment, job training, housing support and other resources. "Safety planning is the gold standard of intervention for intimate partner violence," Bloom says, "but the vast majority of abused women never access domestic violence services where they can make a safety plan for themselves." For those women who do not access services, Bloom developed an Internet-based tool to connect women with the information and resources they need to keep themselves and their kids safer. "It lets women assess the dangerousness of their own situation, weigh their competing priorities and get information in a way that is private and confidential," Bloom says. "Even if she never picks up that phone and calls a shelter, she's at least getting some information that will help."

Bloom is also conducting an Internet-based safety planning tool project funded by the Robert Wood Johnson Foundation

(RWJF) Nurse Faculty Scholar Program in which she is a scholar. This tool includes information tailored to rural and pregnant women. She is currently recruiting for the study, placing flyers in rural community sites where women may see them.

"Dr. Bloom is using the Internet to help women with few options for finding assistance," says Vicki Conn, MU SSON associate dean for research. "This work is especially important because women can access important information without leaving any evidence around their homes that they are seeking help. This is an important use of newer technologies to address old problems."

Twelve years ago, Bloom was working as a labor and delivery nurse in an Oregon hospital when she left her position to work on a research project on abused pregnant women. Working on the research and working with the two researchers, Mary Ann Curry McCammon, BSN '64, Oregon Health Sciences University professor emerita, and Linda Bullock, MU SSON professor emerita and associate dean for research at the University of Virginia School of Nursing, "I know that nurses make a difference at the bedside," Bloom says. "I know I helped my patients in the hospital to be healthier, but I came to realize that research was a way that you could help so many more women because you could change practice and you could change policy and affect the lives of many, many women and children."

McCammon has watched Bloom's career develop since that first research study. "Tina Bloom's combination of clinical expertise, research knowledge and humanity make her extraordinarily suited for her important program of research on violence against women," she says. "The initial promise Linda Bullock and I saw when she began work on our 2001 study has matured into a leading role for nursing research in violence against women."

Bloom was recognized for her work for women's health by the Missouri chapter of



TINA BLOOM
PHD, MPH, RN

the March of Dimes in November 2012. She was one of 17 nurses named a Nurse of the Year in the chapter's inaugural Nurse of the Year event Nov. 10, 2012, in St. Louis. "A key focus of the March of Dimes is healthier moms and healthier babies," Bloom says. "It's also a key focus of what I do." Although Bloom's works largely targets women and children, she has a much larger goal. "The dream that I have is that every man, woman and child will have a safe home," she says. "That's ambitious, I know, I think it's a good goal to strive for."

.....
Women who have been or are currently in an unsafe relationship interested in participating in Bloom's current study on rural women may contact the study at RA@womensinternetstudy.org or 573-489-6844 or 855-247-1250. Health care and domestic violence service providers are encouraged to help with the study by posting flyers in rural areas.

DEVELOPING TOMORROW'S NURSE LEADERS ONE PHD STUDENT AT A TIME



ARTICLE & PHOTOS BY SHOSHANA HERNDON

Deidre d'Amour Wipke-Tevis, BSN '85, believes one of her faculty responsibilities is to help students figure out their career goals. "Helping graduate students determine their role as advanced practice nurses and nurse researchers is, in some ways, kind of like a puzzle," she says. "It's fun to help students figure out those pieces." As she guides students, Wipke-Tevis, an associate professor, also focuses on teaching them how to analyze and work with information. The Mizzou Alumni Association (MAA) honored Wipke-Tevis' devotion to teaching, research and service with a 2012 Faculty Award. She was among 11 faculty and alumni the MAA recognized at its ceremony Oct. 12, 2012.

Wipke-Tevis, PhD, RN, joined the nursing faculty in 1996. For the past two years, she has focused on restructuring and growing the school's PhD program. The education of PhD students means the development of more teachers of nursing. Wipke-Tevis emphasizes that according to a recent American Association of Colleges of Nursing survey, approximately 1,200 nurse faculty positions are unfilled across the country but only 600 students graduate with PhDs in nursing each year in the United States. In order to help solve this problem, Wipke-Tevis has worked countless hours to improve the PhD program and better connect students to the program and school. She spearheaded a new weeklong on-campus orientation program and an annual on-campus immersion experience every April, both of which have been well received by distance-mediated PhD program students who are rarely on campus, says Deb Gayer, associate professor and director of the doctor of nursing practice (DNP) program. Wipke-Tevis' focus on improving the program has also led to gains in enrollment. "She really built the program," Gayer says. "Under Dr. Wipke-Tevis' leadership, PhD program enrollment of new students has grown from one or two students per year to 10 to 13 per year." In 2012, a record 15 PhD students were admitted. Wipke-Tevis also coordinates the clinical nurse specialist (CNS) advanced practice nursing area in the DNP program.

In addition to teaching, Wipke-Tevis loves research. She was one of the first doctorally-prepared nurses to research venous leg ulcers. "She is a pioneer and role model for our students as a nurse scientist in this area of microcirculation and wound healing with

translational application to the clinical bedside," says Jane Armer, a professor in the school and Wipke-Tevis' host for the award process and ceremony. Wipke-Tevis has been awarded more than \$9 million in grant funding from sources such as the National Institutes of Health and the American Heart Association. She received the Harriet H. Werley New Investigator Award from the Midwest Nursing Research Society in 2002 and the Jeanne Doyle Award for Excellence in Vascular Nursing from the Society of Vascular Nursing in 2003.

Away from the nursing school, Wipke-Tevis is active in the local Girl Scouts, serving as a troop leader and delegate at council meetings. In 2010, she received the Volunteer Appreciation Pin from the Girl Scouts of the Missouri Heartland Council. The MU SSON recognized her in 2007 with an Excellence in Service Award. Wipke-Tevis and her husband, Dan, have two children, Drake, an MU student pursuing a bachelor of fine arts, and Delaney, a high school student.



Top: Deidre Wipke-Tevis leads a PhD program committee meeting.

Above: Deidre Wipke-Tevis, left, and Jane Armer celebrate Wipke-Tevis' MAA Faculty Award.

RECOGNITIONS, ACHIEVEMENTS ABOUND FOR NURSING PROFESSOR

ARTICLE BY SHOSHANA HERNDON

PHOTOS BY SHANE EPPING

The fall semester of 2012 brought a multitude of recognitions for Marilyn Rantz, Curators' Professor of nursing. In October, Rantz was admitted to the Institute of Medicine (IOM); in early November the University of Missouri and Sinclair School of Nursing (MU SSON) announced a record-breaking \$14.8 million grant project Rantz will lead; and in late November the American Academy of Nursing (AAN) named Rantz's Quality Improvement Program for Missouri's Long-term Care Facilities (QIPMO) as an Edge Runner. It was an exciting, wild few months for Rantz who also is University Hospitals and Clinics Professor of Nursing and Helen E. Nahm Chair. The recognitions come as Rantz counts more than 30 years working with the aging population and conducting research to improve seniors' quality of life.

"Marilyn Rantz has been a veritable 'force' in terms of improving care and quality outcomes for older adults," says Judith Fitzgerald Miller, MU SSON dean. "She has been innovative, collaborative and strategic in implementing the national model called Aging in Place (AIP). Central to this model is care coordination by nurses to enable older adults to age and receive needed care services in their residential care settings without transfer to nursing homes or acute care facilities. Her membership in the IOM is most deserved."

Election to the IOM is considered one of the highest honors in the fields of health and medicine and recognizes individuals who have demonstrated outstanding professional achievement and commitment to service. Members are those who have made major contributions to the advancement of the medical sciences, health care and public health. The IOM is unique in its structure as both an honorific membership organization and an advisory organization. With their election, members make a commitment to volunteer their service on IOM committees, boards and other activities.

"It's an amazing honor to represent nursing and older adults in this prestigious organization," Rantz says. "I think I'll be able to bring a fresh look at ways to help older adults and new innovative technologies that will help seniors remain independent as long as possible in their own homes. I'm really passionate about helping older people. That's what gets me up in the morning."

Rantz was instrumental in developing TigerPlace, an independent living facility by Americare and the MU SSON using the AIP model. She is AIP director at TigerPlace and MU Interdisciplinary Center on Aging associate director. In 2011, Rantz received the Nurse Leader in Aging Award from the AAN. She is a Fellow in both the American Academy of Nursing and the Gerontological



Above: Marilyn Rantz, PhD, RN, FAAN

Society of America. She also has been recognized with the National Gerontological Nursing Association Lifetime Achievement Award, a Mizzou Alumni Association Faculty Award and the MU SSON Faculty Service Award. Rantz has been affiliated with the school since 1992. Rantz has brought in more than \$52 million in grant funding for her projects and has published extensively with 223 articles, book chapters and proceedings and 17 books.

"We are extremely proud of Dr. Rantz's accomplishment. Her research has had a direct, positive impact on millions of Americans across the country, helping them realize a better quality of life as they enjoy their golden years," MU Chancellor Brady Deaton says. "She joins six other Mizzou faculty who are members of the National Academies. This is a distinct honor and is indicative of the quality of MU's faculty who are educating our future leaders while changing people's lives through their research." With the admission of Rantz and 69 other new members, the IOM's membership now includes a total of 1,732 active members, 112 foreign associates and 84 emeriti.

When QIPMO was given Edge Runner status, the honor was doubly special – this is Rantz' second project to receive such recognition, and she is the only person to have two projects named as Edge Runners. Aging in Place received the recognition in 2008.

The AAN Edge Runner recognition honors nursing innovators who have developed new care models and interventions that demonstrate significant, sustained clinical and financial outcomes.

QIPMO, a cooperative project of the MU SSON and the Missouri Department of Health and Senior Services, aims to improve the quality of care in Missouri nursing homes while also reducing long-term care costs. QIPMO gerontologic nurse specialists perform on-site visits with nursing facilities to offer technical

assistance, care-planning help and clinical consultations. The nurses' primary function is to identify best practices for care procedures and make such information available throughout the state. Since the program's inception in 1999, QIPMO has served Missouri's more than 500 Missouri nursing facilities with more than 1,000 site visits conducted each year. Evaluations of the program found that over a 3-year period, it helped save \$6 million in long-term care costs in the facilities it helped while improving care for residents. The program is funded through Missouri's Nursing Facility Quality of Care Fund.



Above: Marilyn Rantz socializes with the sewing group at TigerPlace, a Columbia Aging in Place facility for older adults. Pictured from left: Gerri Moore (volunteer), Jean Thompson (volunteer), Marilyn Rantz, Mildred Davis (resident), Jan Weiss (resident) and Thelma Bevell (resident).

ASSOCIATE DEAN ELECTED PRESIDENT, MO. STATE BOARD OF NURSING

BY SHOSHANA HERNDON

Roxanne McDaniel, MU SSON associate dean for academic affairs, has been elected president of the Missouri State Board of Nursing. McDaniel has served on the board since 2009.

"Dr. McDaniel's expertise in nursing and knowledge of requirements for professional education and practice will be assets in her position and help the state of Missouri continue to chart a path forward for nursing education and health care in the state," says Judith Fitzgerald Miller, dean of the nursing school.

The Board of Nursing is responsible for approval of all pre-licensure nursing programs in Missouri, including programs for licensed practical nurses (LPNs), associate degree and diploma programs and baccalaureate nursing programs for students who are not registered nurses. Additionally, the board regulates nursing licensure for all LPNs and registered nurses (RNs) and upholds the standards of nursing practice and state laws governing nursing practice.

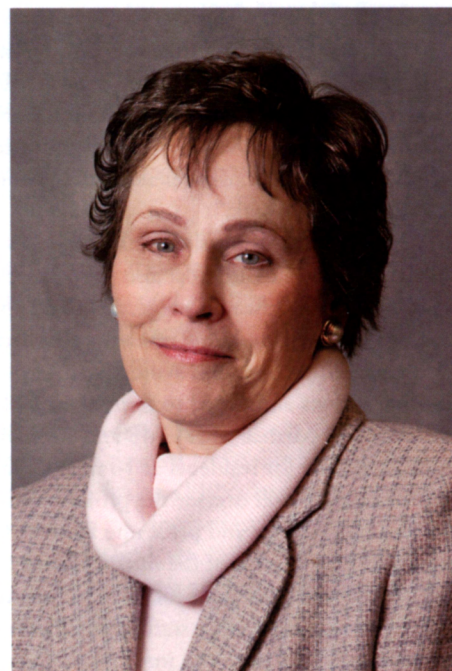
"We ensure that practicing nurses are qualified and provide quality care in whatever their role in nursing," McDaniel says of the board.

In addition to serving as president, McDaniel represents educational nursing programs and is chair of the board's education committee and a member of the licensure committee.

McDaniel joined the MU SSON faculty in 1989 as an assistant professor and taught undergraduate and graduate courses in adult health and oncology. As associate dean for academic affairs since 2002, McDaniel oversees the school's academic programs and teaching faculty, ensuring the programs prepare students for their various nursing roles upon graduation and meet all national accreditation standards.

This position as president draws on McDaniel's original reason for becoming a nurse. "I wanted to do something where I could be active and engaged and really do something to better the welfare of society," she says.

McDaniel has received several awards for her work: Most Supportive Faculty Award from the Graduate Nurses Association, Excellence in Service Award and Excellence in Teaching Award from the MU SSON and a Scholarly Pursuit Award from the Alpha Iota Chapter of Sigma Theta Tau. McDaniel also has garnered sev-



ROXANNE MCDANIEL
PhD, RN, FAAN

eral grants from national funding sources including the National Cancer Institute, the Oncology Nursing Foundation and the Department of Health and Human Services.

RECORD-BREAKING GRANT NETTED, AGING POPULATION TO BENEFIT

School Receives Nearly \$15 Million for Project to Reduce Re-hospitalizations of Nursing Home Residents

ARTICLE BY JESSLYN CHEW
PHOTOS BY SHOSHANA HERNDON

The University of Missouri and the Sinclair School of Nursing (MU SSON) on Nov. 5, 2012, announced a \$14.8 million grant from the U.S. Department of Health and Human Services Centers for Medicare and Medicaid Services (CMS). It is the largest research grant ever for the university. MU researchers, led by Marilyn Rantz, Curators' Professor of nursing, will use the funds, distributed over four years, to implement a project aimed at reducing avoidable re-hospitalizations among nursing home residents. Insights gained from this project could provide a nationwide model for senior care and significantly reduce national health care spending.

"The term, 'ecstatic,' does not capture my current sentiment," says Judith Fitzgerald Miller, MU SSON dean. "This is a transformational grant for the university and is congruent with our passion for excellence in health care. The care of older adults will be improved as a result of this work."

The majority of nursing home residents are enrolled in Medicaid and most also participate in Medicare, CMS reports. Previous research suggests that nearly half of hospitalizations among nursing home residents enrolled in Medicare or Medicaid could have been avoided. These potentially avoidable hospitalizations amounted to more than \$7 billion in 2011.

MU will partner with CMS and state Medicaid programs to improve care for residents at 16 nursing facilities in St. Louis. MU researchers will oversee the project, and using grant funds, the team will recruit and place one advanced practice registered nurse (APRN) at each of the nursing homes. APRNs receive specialized post-graduate education in nursing. The APRNs will work with nursing facility staff and residents' health providers to coordinate patient care and improve the recognition, assessment and management of conditions that are common causes of hospitalizations for aging adults.

"Previous research has shown that every time patients move from nursing homes to hospitals and back to nursing facilities, their conditions deteriorate," says Rantz, who has spent more than three decades conducting research to improve the quality of life for aging adults. "Older adults have subtle changes in their behaviors and in their health statuses. In nursing homes, improving the observation and assessment processes by advanced prac-



University of Missouri nursing school researchers involved in the project:

- Greg Alexander, associate professor
- Marcia Flesner, clinical instructor
- Jessica Mueller, program coordinator
- Lori Popejoy, assistant professor
- Marilyn Rantz, Curators' Professor
- Amy Vogelsmeier, assistant professor

MU researchers from other colleges and schools:

- Colleen Galambos, professor in the College of Human Environmental Sciences' School of Social Work
- Richelle Koopman, associate professor of family and community medicine in the School of Medicine
- Greg Petroski, biostatistician in the Office of Medical Research in the School of Medicine



Above: School and grant researchers celebrate after a press conference announcing the record-breaking grant Nov. 5, 2012. From left: Front row – Deborah Finley, director of patient safety for nursing home and prevention with Primaris, a grant subcontractor; Colleen Galambos, professor in the MU College of Human Environmental Sciences’ School of Social Work; Judith Fitzgerald Miller, MU SSON dean; Greg Alexander, MU SSON associate professor; Julie Starr, nursing PhD student working on the project; Back row: Mindy Mazur, chief operating officer, with grant subcontractor Missouri Health Connection; Jessica Mueller, program coordinator; Marcia Flesner, MU SSON clinical instructor; Marilyn Rantz, Curators’ Professor of nursing; Amy Vogelsmeier, MU SSON assistant professor; and Richelle Koopman, associate professor of family and community medicine in the MU School of Medicine.

Left page: George Hage, 88, chats with Marilyn Rantz at the entrance to his apartment at TigerPlace, an Aging in Place facility. The new grant expands the school’s aging research, narrowing the focus from Aging in Place to a focus on reducing avoidable hospitalizations among residents of nursing homes in St. Louis.

ted nurses can help residents receive treatment earlier and avoid unnecessarily going back to hospitals.”

The APRNs at each facility will work with a traveling interdisciplinary team consisting of a master’s-prepared social worker, an information technology specialist, a medical director and an APRN with specialized knowledge of INTERACT II, a quality improvement program designed to monitor and improve aging adults’ health.

“Transitioning between hospitals and nursing homes is a complicated process because the exchange of accurate, complete and timely information often is convoluted,” Rantz says. “The interdisciplinary team will put the infrastructure in place to support good communication, which will help improve the patient care.”

Rantz has dedicated most of her career to studying ways health care professionals can facilitate healthy aging processes. She views this grant as the culmination of her work and an opportunity to put her research into practice.

“From my perspective as a researcher, clinician and former nursing home administrator, this award is exciting because, for years, I have measured the benefits of APRNs in nursing homes,” Rantz says. “Putting APRNs in nursing homes is the right solution, and if you combine these nurses with the INTERACT II tools, we’ve really got a shot at improving the quality of care and health outcomes of nursing home residents.”

Subcontractors on the grant are Primaris, a federally designated organization that works to improve health care quality and affordability for Missouri residents, and Missouri Health Connection, a non-profit organization that is implementing Missouri’s statewide health information network to securely connect patients and providers in the state.

Seeing Double

ARTICLE AND PHOTOS BY
SHOSHANA HERNDON

The nursing school black scrubs create a sort of uniformity among students, but faculty and students started seeing double last semester as not one but two sets of identical twins began the fifth semester clinical nursing program. Shay and Shelby Noll, of Salisbury, Mo., and Annie and Melissa Watsek, of Washington, Mo., were all Nursing Scholars admitted to the program as entering freshmen 2.5 years ago. Each set of sisters shares much in common, but each student also expresses a deep desire to be seen as an individual.

“We’re not really the kind of twins who try to dress alike, but we have to with our nursing scrubs,” Annie says. “Sometimes we do show up in the same outfits because we like the same clothes. Even when we were little we’d come out wearing the same clothes from a big stack we’d try on at the store.”

Interactions with nurses helped all four students select nursing as a career. Shay and Shelby went to a hospital-based nursing camp before their junior year of high school. “It was a lot of fun,” Shelby says. “We got to see a C-section and a lot of surgery.”

“You took my answer,” Shay interjects. “The camp was one of the main reasons I chose nursing. The nurses were amazing. They were just so enthusiastic about it.”

Annie and Melissa love medical television shows and books and as high school seniors volunteered at their local hospital. “I’ve always been interested in nursing,” Melissa says. “I like helping people.”

Each of the students spends a lot of time with her sister – living together, attending classes together, sometimes volunteering and working together, studying and enjoying their little bit of free time together. The Nolls see benefits of the largely shared schedule. “We can keep track of each other,” Shay says. “It’s really nice; we enjoy that part. We just don’t like it when everyone thinks we just do everything together and have to do the same thing.”

The fifth semester instructors make sure each set of twins has opportunities to work and learn apart by placing sisters in different



Top left: Shelby, left, and Shay Noll. **Top right:** Annie, left, and Melissa Watsek.

Bottom, from left: Annie and Melissa Watsek and Shelby and Shay Noll work with SimMan® 3G, a high-definition manikin that breathes, simulates illness symptoms and reacts to medications.

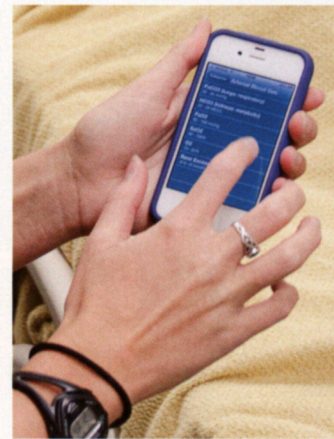
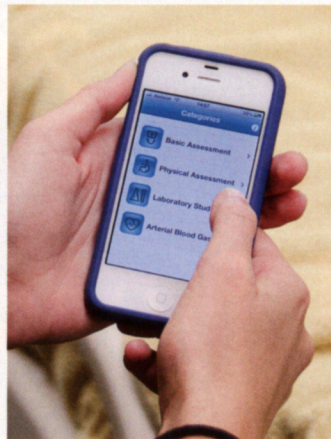
clinical groups. Instructors Brenda Hanson and Gretchen Gregory praise the students for their clinical work and say it is an interesting experience to teach two sets of twins. “I have not had this happen since I began teaching here,” says Hanson, who teaches Shay and Melissa and has taught in the school for more than 30 years. Gregory, as director of the Essig Clinical Simulation Learning Center, sees the four students every week and has noticed an interesting trend among each set of twins – the sister pairs score almost identically when testing, usually their scores are separated only by a few points.

“All four of them are very, very bright and articulate and high achievers,” Gregory says. “These are smart young women.”

AN APP A DAY

ARTICLE AND PHOTOS
BY SHOSHANA HERNDON

Textbooks and notebooks still hold a firm spot in the world of college classes and clinical coursework, but technology is taking over, one app and mobile device at a time. Rachel Burroughs, a May 2012 graduate of the Sinclair School of Nursing, developed a nursing application, or “app,” for smartphones during her senior year. Burroughs, of O’Fallon, Ill., worked with friends to develop the app after she had some difficulty remembering laboratory values while working as a student nurse technician at Barnes-Jewish Hospital in St. Louis. “I had moments where I was unable to remember basic values,” she says. “One day I had trouble recalling the normal ranges for arterial blood gas values of a particular patient. It really bothered me that I could not remember the values or the significance of the results. In that moment, I had an idea to create a smart phone application that could help student nurses and nurses get reference values in a quick and easy way – I



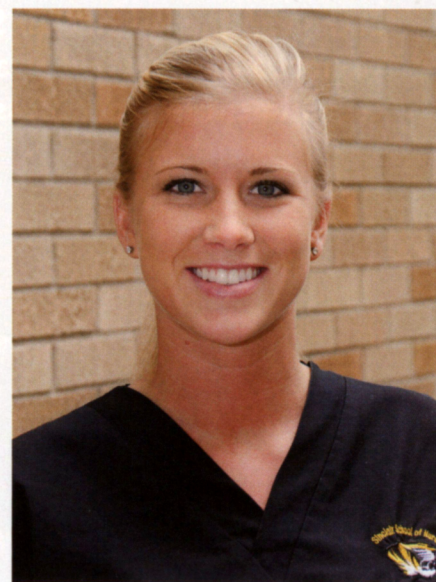
decided to call it Quick Nurse.” With that spark of an idea, Burroughs conducted unofficial market research – she asked fellow students and nurses what they thought and if they would use a quick reference app for nurses. Feedback was positive and Burroughs moved forward with the idea. “As a fifth semester student starting clinicals, I would have loved to have this application. We are taught a great deal of information at the same time and then brought right into the clinical setting,” Burroughs says. “It’s so hard to remember everything. Quick Nurse works as a great visual aid that you can use as another reference.”

Burroughs sought the help of Mizzou non-nursing students and app developers Zach Winkler and Francesco Marconi.

The app was designed for simplicity since other more complex nursing apps are available. The app includes four categories: basic assessment, physical assessment, laboratory studies and arterial blood gases.

The app launched on iTunes April 9, 2012, and has been well received. It has been downloaded around the world, including Canada, Austria, the United Kingdom and

Left and top: Rachel Burroughs demonstrates how Quick Nurse can easily be used as a quick reminder.



RACHEL BURROUGHS, BSN '12

Portugal. After its launch, the app was featured as “new and noteworthy” among medical apps and reached No. 68 among top paid medical applications in the United States. The app currently costs 99 cents.

Burroughs plans to continually update the app to increase its spectrum of use and is interested in creating more apps. “I enjoyed the process of developing an app,” she says. “It could be my fun hobby on the side of working as a registered nurse. I want to focus on creating applications that are beneficial for students, nurses and family members in order to promote positive patient outcomes. Nurses are busy and some facilities are understaffed. I’m always thinking about how to make things easier for all individuals.”

While a student, Burroughs was a member of the Student Nurses Association and was inducted into Sigma Theta Tau. She minored in Spanish and is a registered nurse in a private office in New York.



2013

MU NURSING AWARDS

Each year, the MU Sinclair School of Nursing and the Nursing Alumni Organization co-host a banquet and awards program to recognize graduates and friends for their commitment to the profession of nursing, their accomplishments and their service.

CITATION OF MERIT

Linda Kovachevich Klein, BSN '74

ALUMNA OF THE YEAR

Mary I. Johnson, MS(N) '87, CNS '95

ALUMNI ACHIEVEMENT

Elizabeth L. Pettitt, BSN '08

HUMANITARIAN AWARD

Ursula Adrian Smith, BSN '80

HONORARY ALUMNA

Marjorie Skubic

DISTINGUISHED FRIEND OF THE SCHOOL

Richard G. Miller

CITATION OF MERIT

LINDA KOVACHEVICH KLEIN, BSN '74

A nursing degree provides diverse possibilities; several are evident in Linda Kovachevich Klein's career. Like most graduate nurses, Klein began her career in the clinical setting. After 14 years in clinical nursing and research, she took a corporate role in the pharmaceutical industry. After another 14 years she became a nurse entrepreneur, starting Klein and Company Inc. For 11 years she has served as president and CEO of this multi-million dollar company that provides medical education and communication services for the biopharmaceutical and medical device industries.

Klein credits her ability to switch roles and think on her feet to the education she received at the MU SSON. "The thing that I benefited from the most was the ability to problem solve," Klein says. "We were really taught to look at a problem, identify, implement and revisit a plan, while continually evaluating the outcomes. These are life-long skills, applicable in any setting."

Now based in Florida, Klein lived most of her life in the Kansas City area. She has focused much time and energy on supporting other women through the Kansas City Women's Employment Network (WEN). This organization helps women develop skills for employment. Klein started the Cocktails and Couture fundraiser for the organization, initially to support the WEN clothing bank. The goal was to collect and purchase professional clothing so that each WEN participant would have five career outfits upon graduating from the program. "Linda is a shining example of our graduates – throwing herself heart and soul into causes she is passionate about," says Tracy Feller, former school director of development and a current MU regional director of development.

Klein's company has been named the Kansas Woman-Owned Business of the Year Professional Service Firm by the Kansas Department of Commerce Office of Minority and Women Business Development and has been honored as a Top 25 Under 25 company in Kansas City.

Klein is a member of the MU SSON Dean's External Advisory Council. She was interim chair of the school's Campaign Steering Committee in the For All We Call Mizzou Campaign as well as a representative on the campus-wide committee.

Klein and her husband, David, have two children and two grandchildren.



SHEHEWE PHOTOGRAPHY

ALUMNA OF THE YEAR

MARY I. JOHNSON, MS(N) '87, CNS '95

Patients count Mary I. Johnson as a member of their families. For more than three decades she has provided respectful and compassionate care for cancer patients from the start of treatment through follow-up care. "Mary provided a comforting and caring approach to everything she did for me," says Susan Zorsch, a former patient diagnosed with leukemia in 1995. "She became part of my family during that time. She helped me on the clinical and emotional side and also supported my family." Zorsch, now one of Johnson's colleagues at Ellis Fischel Cancer Center (EFCC), is just one of thousands of cancer patients who have come under Johnson's care. "Each patient I meet is on a journey, and I just want to do everything I can to help them through that journey," Johnson says. "I really am just truly blessed to be a part of that."

Johnson has spent 43 years with University of Missouri Health Care, both at University Hospital and in her current role as a nurse practitioner and clinical nurse specialist at EFCC. She helped set the standards for cancer care at the facility in the 1970s while also implementing cancer care training for staff. "Both patients and staff describe her as having a calming effect and a ready smile," says Verna Adwell Rhodes, MU SSON associate professor emerita. "She provides conscientious, respectful holistic care." Johnson also worked on a variety of cancer research projects with Rhodes, providing the clinical view and co-authoring articles in more than 25 refereed journals and 20 scholarly publications. While continuing to work full-time, Johnson earned a master's degree in nursing in 1987 and CNS certification in gerontological nursing in 1995 from the school.

Johnson has been honored with the MU Chancellor's Recognition Award, the Karna Kruckenberg Award for Excellence in Patient Education, the Lane W. Adams Award from the American Cancer Society and the Oncology Nursing Society Caring Award. She also was recognized in the 2007 MU Tribute to Women. She is a member of the Oncology Nursing Society, American Nurses Association and Missouri Nurses Association. Johnson and her husband, Dan, relax with their menagerie of horses, cats and dogs.



ALUMNI ACHIEVEMENT

ELIZABETH L. PETTITT, BSN '08

Some nurses come to the profession a little later than others, bringing special insight to their careers through their experiences. After earning a bachelor of science in business administration from Southwest Baptist University in Bolivar, Mo., Elizabeth L. Pettitt began to consider switching careers. "I started talking to people who had gone to nursing school and the wheels started turning," she says. "Then it hit me – this is what I need to do. I just suddenly had a passion for figuring out how to take care of people."

Pettitt earned a nursing diploma in 1995 from St. John's School of Nursing. She currently works in the Outpatient Department at Lake Regional Health System in Osage Beach, Mo., where she has held a variety of roles. In addition to providing direct patient care, she also serves as the nurse mentor part-time. Through this role, she develops and maintains educational programs for high school students, nursing students and staff nurses. A few years ago Pettitt decided she needed a bachelor of science in nursing to pursue her career goals. She enrolled in the MU SSON's distance-mediated RN to BSN program, completed her degree in 2008 and now is working on a master's in nursing through Chamberlain College of Nursing with an executive focus. "I have a passion for understanding more about the business side of nursing," Pettitt says. "I love taking care of people, but I also have a passion for seeing things from the perspective of a business model." Pettitt's determination to work for positive change is obvious to her colleagues. "Beth will forever be looking for ways to improve for the nursing profession," says Cherilyn Sisson, nurse manager at Lake Regional.

Pettitt has received a Beacon Award from Lake Regional and served as a Missouri Quality Award Examiner in 2011. She completed the Camden County Leadership Training and the Future Leaders program at Lake Regional. She is a member of the Mizzou Nursing Alumni Organization Board, the advisory board for the Lebanon LPN program and the Columbia College of Nursing, Lake Ozark program. Pettitt has two children, Katherine Lucas and Charlie Pettitt.



HUMANITARIAN AWARD

URSULA ADRIAN SMITH, BSN '80

Ursula Adrian Smith has just a few years of paid nursing experience, but she has never taken a day off from the profession of nursing, says her daughter Emily Smith. Ursula Smith worked as a registered nurse, staff nurse and charge nurse at University Hospital before becoming a full-time mother of five but over the past 30 years has continued to use her nursing education. For a decade, Smith volunteered as the school nurse at her children's independent school, organizing student vaccine records and health information, correcting bad procedures and implementing better health practices. "I loved it," Smith says. "It was a way I could do nursing but still have a flexible schedule for my children."

As her children grew, Smith began to explore an interest in public health and safety that she first developed as a nursing student. She has attended disaster prevention and preparedness courses and has been on the Community Emergency Response Team in Chesterfield, Mo., since it began. She also volunteers for role-playing parts during drills and disaster training scenarios for hospitals and fire departments. Smith has used her nursing administrative skills on several non-profit boards and also lends her expertise and boundless energy to other volunteer work. She is immediate past president of National Charity League Inc. in St. Louis, a non-profit mother/daughter organization that serves 26 local charities. She also supports several organizations that serve military families, including the St. Louis VA Medical Center's Fisher House and Operation Homefront.

Smith and her husband, Steve, a 1982 graduate of the MU School of Medicine, were founding members of the Nightingale Society, the school's gift society, and are members of the McAlester Society and the Jefferson Club. Smith has given back to the school through her leadership for several appeals such as the Take Stock in Our Faculty appeal that resulted in the Dr. Rosemary T. Porter Faculty Scholar.

Smith has passed her dedication to serving others on to her children: Heather, BSN '07, and Emily, BSN '09, are Mizzou nurses; Harrison completed an MU degree in respiratory therapy, BHS(RT) '11; Karlton is an MU student studying biochemistry; and Abby, a high school student, is interested in medical engineering.



HONORARY ALUMNA

MARJORIE SKUBIC

Sensor technology is a key component of Aging in Place research at the University of Missouri. At TigerPlace, bed sensors monitor residents' heart rates, respiration and restlessness and computer algorithms notify caretakers when residents show early signs of declining health or illness. This system was developed by Marjorie Skubic and the interdisciplinary MU Center for Eldercare and Rehabilitation Technology (CERT) team. A professor with joint appointments in the Department of Electrical and Computer Engineering and Department of Computer Science, Skubic's work is changing the face of eldercare.

For Skubic, the drive to conduct this kind of research is the same drive found in nurses. "That she is trained as an engineer does not matter," says David Heise, one of Skubic's former graduate research assistants, CERT researcher and an assistant professor of computer science at Lincoln University. "The spirit of her work and driving motivation is the same, I think, as any nurse: she wants to help people and better the lives of others." The work also has a personal undertone for Skubic. "We all have aging family and friends," she says. "We can certainly relate to the kind of problems they encounter. You want to do something to be able to help them."

Skubic has worked closely with Marilyn Rantz, Curators' Professor of nursing, as part of the interdisciplinary team working to improve seniors' quality of life; the pair co-lead the Eldertech research team at TigerPlace. Skubic has helped garner more than \$10.5 million in research funding from federal sources. The research already has exceeded Skubic's dreams, but she sees even more potential in the projects. "I feel like we're just grasping the surface," she says. "I'm thinking about the next big thing that we need to do."

In addition to research, Skubic has a passion for teaching and developing an interest in research among undergraduate students early in their academic careers. "She is an amazing student advocate and mentor," Rantz says. "With her careful guidance, students excel in graduate and undergraduate education and research." Skubic has twice been named Outstanding Teacher by graduating seniors in the College of Engineering.

Skubic and her husband, Dan Fischbach, have two children, Theresa and Jake.



DISTINGUISHED FRIEND OF THE SCHOOL

RICHARD G. MILLER

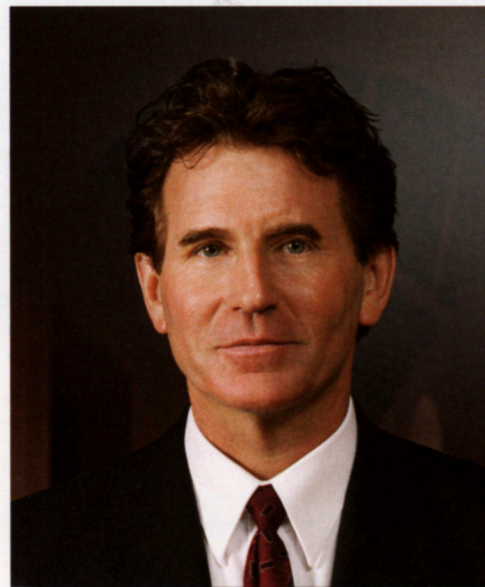
One of Columbia's prominent entrepreneurial leaders has spent a career growing his business while also growing the community. Columbia, the University of Missouri and the Sinclair School of Nursing have benefited from Richard G. Miller's generous support and leadership.

After graduating with a bachelor of science in mathematics from Mizzou, Miller joined Miller's Professional Imaging, the professional photography lab his father started in 1939 in Pittsburgh, Kan. Miller is now president and CEO of the multi-million dollar company. In 2001, he opened a new Miller's digital imaging lab in Columbia and in 2003 launched Mpix, a web-based digital imaging lab division of the company.

Miller's generosity is widespread. In 2011, he funded the school's innovative Safe Practices Room where students learn how to keep themselves from injury and keep patients safe. "Richard Miller has been incredibly responsive to helping us with our most pressing needs," says Judith Fitzgerald Miller, MU SSON dean. He and his company consistently support the Fund the Drive for Nurses Golf Tournament and the school's annual banquet and awards ceremony. The past two years, Miller has co-funded a gala dinner for the Dean's External Advisory Council and community leaders, providing a venue for publicizing the school's work and connecting new friends to the school. Miller also serves on the MU SSON Dean's External Advisory Council.

Miller holds an MU honorary Doctor of Humane Letters and received the 2012 Champion of Hope Award from University of Missouri Children's Hospital and a 2004 Faculty-Alumni Award from the Mizzou Alumni Association. He is a member of the Nightingale Society, the school's gift society, and several other MU gift societies: the Jefferson Club, Mosaic Society, Davenport Society, Chancellor's Society, McAlester Society and Grace Bibb Society. He served on the For All We Call Mizzou Campaign Planning Committee and continues to serve the university. He is on the Arts & Science Strategic Development Board, is a Mizzou Flagship Council Board member and a University of Missouri 100 co-chair. He also has served in several board leadership positions at Pittsburgh State University. He was named Kansas Photographer of the Year twice and holds a Master of Photography Degree from the Professional Photographers of America.

Miller's children, Will, Starr, Grace, Faith and John, have all graduated from or attended MU. Grace earned a BSN from the school in 2012.



Please accept this invitation. As our annual budget tightens and costs continue to rise, we have included your invitation below rather than send one separately. Thank you for your continued support of the school.

You are cordially invited

23rd Annual Nursing Banquet and Awards Ceremony

Friday, April 5, 2013

***Donald W. Reynolds Alumni Center
University of Missouri, Columbia, Mo.***

Reception

5:30 p.m., The Great Room

Banquet & Awards Ceremony

6:30 p.m., The Columns

Business attire requested

Menu and registration information are on the reply envelope in this magazine. Please fill out your choices, enclose a check made payable to the MU Sinclair School of Nursing and return by March 15, 2013.

Sponsorship opportunities are available; see page at right for details.

Alumni Reunion

**Featuring graduates of 1943, '53, '63, '73, '83, '93, '03*

Saturday, April 6, 2013

8:30 a.m. - 2:30 p.m.

*Class reunions and tours held on the
University of Missouri campus*

Reply using the envelope in this magazine

by March 15, 2013.

Schedule of Events

- 8:30 a.m. – Welcome and registration (University Hospital lobby)
- 9 a.m. – Hospital tour
- 10 a.m. – Sinclair School of Nursing tour and simulation learning demonstrations
- Noon – Lunch in S455, School of Nursing building
- 1:30 p.m. - 2:30 p.m. – “MU: Then and Now”

2013 Banquet Sponsorship Opportunities

Please check the appropriate level below and return with your credit card information or check made payable to the "MU Sinclair School of Nursing." Mail this form using the postage-paid envelope in this magazine to: MU Sinclair School of Nursing, University of Missouri, c/o Sandra Davis, S212 School of Nursing, Columbia, MO 65211-4120

YES! We/I wish to participate as a:

_____ Platinum Sponsor \$1,000

Platinum sponsor is the foundation that allows this tradition to continue. Donations help offset event related expenses (centerpieces, printing costs, mailing costs, award plaques, audiovisual and supplies). The full amount (\$1,000) counts as a charitable donation and qualifies the donor to be an annual member in the Nightingale Gift Society. Separate banquet tickets may be purchased at \$45 each.

_____ Gold Sponsor \$750

Gold sponsor enables nursing students and award nominees to attend and offsets event expenses. This level includes **6 tickets** for the sponsor. Less the fair market value of \$270, this donation counts for a charitable contribution of \$480.

_____ Silver Sponsor \$500

Silver sponsor enables nursing students and award nominees to attend and offsets event expenses. This level includes **4 tickets** for the sponsor. Less the fair market value of \$180, this donation counts for a charitable contribution of \$320.

_____ Bronze Sponsor \$250

Bronze sponsor enables nursing students and award nominees to attend and offsets event expenses. This level includes **2 tickets** for the sponsor. Less the fair market value of \$90, this donation counts for a charitable contribution of \$160.

_____ Contributing Sponsor \$50 (or more and in any amount)

Contributing sponsor donations will help offset event expenses listed under the Platinum category. No tickets included with this level – entire gift is tax-deductible.

Individual tickets may be purchased for \$45 each if you wish to bring additional guests. The Nursing Banquet and Awards Ceremony will be held Friday, April 5, 2013, at the Donald W. Reynolds Alumni Center, University of Missouri, Columbia, Mo.

Please contact the special events office at (573) 882-2416 for more information.

To be included in the printed program, sponsors must reply by Friday, March 8, 2013.

Official sponsorship name to read as: _____
(Examples: Dr. & Mrs. John Smith or University Hospitals and Clinics or First National Bank)

Name / Organization: _____

Address: _____

City: _____ State: _____ Zip: _____

Contact Name: _____ Title: _____

Email: _____ Phone: _____

Credit Card: MasterCard Visa Discover *(we do not accept American Express)*

Number: _____ Expiration date: _____

From the Alumni President

Greetings fellow alumni and friends of the Sinclair School of Nursing! I can hardly believe this is my last official letter as the president of the Nursing Alumni Organization. These last two years have flown by, and in this brief time I have witnessed many amazing accomplishments by the Sinclair School of Nursing and our alumni.

As I reflect back on some of the themes our dean instilled in the faculty, staff and students over the last few years – A School on the Move, Reaching New Heights and Champions for Nursing Education and Nursing Research – these were not just themes but were true goals which were accomplished beyond any expectation. This magazine gives a brief glimpse of some of the very amazing accomplishments of our faculty, staff and students. My hat is off to all of these very inspiring individuals.

This edition also features this year's recipients for the 2013 Nursing Alumni Awards to be honored at the 23rd Annual Nursing Banquet and Awards Ceremony on Friday, April 5, followed by an Alumni Reunion on Saturday, April 6. This year we will especially honor our graduates from years ending in '3' – 1943, '53, '63, '73, '83, '93 and '03; however, all alumni are invited and encouraged to attend. Please take a few minutes to read about these very talented individuals, their accomplishments and contributions to the nursing profession and the families and communities they serve. Better yet, make your plans now to attend this event. I promise you will not be disappointed!

In previous letters I have encouraged you to “pay it forward,” to support and to stay connected to the School of Nursing, so again here are just a few ways to do this:

- Stay connected, let us know about your professional accomplishments so that we might honor you. Don't be shy, be proud!
- Serve on the MU SSON Alumni Board. Nominations are being accepted until April 2 for 2-year terms to start in July 2013. Contact Donna Otto – 573-884-7293 or ottod@missouri.edu.
- Consider volunteering as a “standardized patient” in the Essig Clinical Simulation Center to allow our nursing students realistic training before they enter a real clinical setting.
- Become a member of the Nightingale Society by donating \$1,000 or more to the Sinclair School of Nursing.
- Still enjoying that attaché case that you received at the brunch given in your honor? Consider donating to the alumni gift fund to make sure that tradition continues!
- Always wanted to be in a parade? Next fall, put on your black and gold, come home to Mizzou for the annual homecoming festivities and support our students by marching alongside them in the homecoming parade on Oct. 26, 2013.
- Attend the Nursing Banquet and Awards Ceremony. Make it an annual tradition to reconnect with classmates, instructors and friends and to honor your fellow alumni.

There are so many ways to stay connected and to support our school, for more information, please feel free to contact myself (terryjacksonrn@yahoo.com) or Donna Otto (ottod@missouri.edu). My parting words to you as your president of the Nursing Alumni Organization are truly ‘thank you.’ Thank you for allowing me to serve in this position, it was a most humbling experience and a true honor that I will forever treasure. GO TIGERS!



TERRY JACKSON

BSN '78

The MU Nursing Alumni Organization has presented attaché cases to undergraduates beginning clinicals for more than 10 years. Purchase a case for yourself and proceeds support the continuation of this tradition. Cases are 19 x 14 x 4 inches, with interior padding to support a laptop computer.



\$50 + \$5 SHIPPING

Please make checks payable to the MU Sinclair School of Nursing and mail to Donna Otto, S428 School of Nursing, University of Missouri, Columbia, MO 65211. For more information, contact ottod@missouri.edu or 573-884-7293.

HOMECOMING ROYALTY

Traditional BSN student **Jessica Loos** (far right) was selected for Mizzou's 2012 Top Ten Homecoming Royalty. Loos, of St. Charles, Mo., was sponsored by the MU Women's Center where she works.

Near right: Kaylan Holloway, a communication and political science major and fellow Top 10 Royalty, escorts Loos during the Mizzou Homecoming halftime ceremony. Loos will graduate in May. **Below:** A large contingent of school faculty, staff, alumni and friends, clinical students and pre-nursing students walked in the homecoming parade led by Dean Judith Fitzgerald Miller.



SUBMITTED PHOTOS



SHOSHANA HERNDON

Join the Mizzou Nursing Alumni Organization

Get connected while supporting students, campus programs and faculty.

Individual, \$45 Dual, \$65

New grad (1-3 yrs), Senior (65+), MU Faculty/Staff

Individual, \$35 Dual, \$50

Student

Student/True Tiger, \$25 Dual, \$35

I would like information about Life Membership

Name _____

Email _____

Address _____

Mail to 123 Reynolds Alumni and Visitor Center, Columbia, MO 65211

Memberships are tax deductible.

Fill out and send this form or visit mizzou.com/joinNursingAlumni to join today!

Make checks payable to:

Mizzou Alumni Association or charge:

Visa MasterCard Discover

Card No. _____

Exp. _____

MU Student Charge

MU ID# _____

Signature _____

(required for credit card use)

UNA

ALUMNI

1960s

D. Caroline Davis, BSN '65, MS(N) '90 has been appointed to the MU Gift Planning Advisory Committee. As a member of the committee, she will participate in Legacy Society events and activities. She retired from the MU SSON faculty in 2002, is an emerita member of the Nursing Alumni Board of Directors, immediate past chair of the MU Fortnightly Club Scholarship Committee and a docent at the MU Museum of Art and Archeology.

1970s

Sheryl Feutz-Harter, BSN '75, has joined the Bryan Cave LLP law firm in Kansas City where she practices in the health care regulatory and operational areas. Her son, Evan, enrolled at Mizzou in August 2012.

1980s

In August 2012, **Connie Hamacher**, MSN '86, PhD in education '97, chair of the Lincoln University (LU) Department of Nursing Science, was named the university's interim president. **Linda Bickel**, MSN '82, PhD in education '98, Lincoln University dean of the College of Professional Studies / director of graduate studies, has been named interim chair for the LU Department of Nursing Science.

Carol Ann Mason Matthews, MS(N) '85, currently practices at CoxHealth Wal-Mart walk-in clinics and Seasons Hospice. She also holds a master's in guidance counseling and a doctor of nursing practice with a psychiatric emphasis and is ANCC certified in family, pediatrics and psychiatry.

1990s

Judith Ann Eshelman Siron, MS(N) '99, opened a free-standing midwifery women's health center in Kissimmee, Fla., in January. The center is staffed by full-time and part-time CNMs, WHNPs and supported by OB-GYNs of Osceola Health. Siron recently delivered her 3000th baby.

2000s

Kristen Medley, BSN '07, received a DAISY Award for nursing excellence. She works on the pediatric unit at Children's Hospital in

FAAN INDUCTION

Three alumnae were inducted into the American Academy of Nursing at a reception October 13, 2012, in Washington, D.C.: **Mei Fu**, BSN '97, MSN '00, PhD '03; **Lisa Lewis**, PhD '02; and **Nelda Godfrey**, BSN '77, PhD '99. Fu is an associate professor in the New York University College of Nursing; Lisa Lewis is an assistant professor in the University of Pennsylvania School of Nursing; and Nelda Godfrey is associate dean of undergraduate studies at the University of Kansas School of Nursing. Professor **Jane Armer** was one of Fu's sponsors to the Academy. **Jenny Dine**, current MU SSON PhD student and a National Institutes of Health Graduate Fellow, and **Verna Adwell Rhodes**, associate professor emerita, also attended.



Front, from left: Jane Armer and Verna Adwell Rhodes. **Back, from left:** Mei Fu, Lisa Lewis and Jenny Dine.

SUBMITTED PHOTO

Columbia and was nominated by a physician who described her as "the best nurse I know."

2010s

Audrey Kerr, BSN '10, received a DAISY Award for nursing excellence. She works as a weekend night-shift nurse in University Hospital's Trauma Surgical Intensive Care Unit. Additionally, Kerr and staff nurse Elise Welsh won the hospital's Infection Control Department infection prevention poster contest during International Infection Prevention Week Oct. 14-20, 2012, with a poster titled "Sacking Ventilator-associated Pneumonia (VAP)."

Ausanne Wanchai, PhD '12, is now practicing in her native home in Thailand. On Oct. 21, 2012, she and her colleagues celebrated Thai National Nurses Day to commemorate the birth of Princess Srinakarindra, mother of the king of Thailand and a nurse. During the celebration, Wanchai and her students presented research posters.

FACULTY

Jane Bostick, associate teaching professor, was named in the Top 100 Nursing Professors

in 2012 published on BSNtoMSN.org. View the list here: <http://bsntomsn.org/nursing-professors>.

Kathy Bowman joined the nursing faculty as an assistant teaching professor. Her nursing specialty is maternity nursing care and maltreatment during childhood among adults. She has 15 years of perinatal practice experience and 13 years teaching experience. Her research includes maltreatment outcomes among mothers and fathers with histories of maltreatment during childhood.

Clayton Clark, BSN '08, MS(N)-FNP '12, joined the faculty as an instructor of clinical nursing in August 2012. He worked as a staff nurse for three years with University Hospital and now teaches in the BSN program.

Hillary Claunch joined the school as an instructor of nursing in January. She previously worked as a staff nurse in the Cardiac Intensive Care Unit at University Hospital. Claunch earned a BSN from Central Methodist University in 2010 and will complete her master's in nursing from CMU in June 2013.



**STAY IN TOUCH WITH
FELLOW ALUMNI AND
THE SCHOOL ALL YEAR**

facebook.com/MizzouNursing

Wendy Evans, clinical instructor, gave the presentation, "Health Aging," to the Booneslick Kiwanis Club in July 2012.

MU Health Care nurse leadership and school faculty held a collaborative lunch in October 2012. **Marcia Flesner**, clinical instructor, presented a \$1,000 check from the Alpha Iota Chapter of Sigma Theta Tau for MUHC's Nursing Life Long Learning Fund. Several nursing faculty also gave donations.

Anne Heine, instructor of clinical nursing, served on the 2013 Excellence in Nursing Selection Committee for *St. Louis Magazine*. She also served on the committee in 2009.

Heidi Holtz, BSN '06, was accepted into the University of Missouri Faculty Scholars program for 2012-2013. The program promotes the success of new faculty by assisting as they adjust to academic responsibilities while supporting their scholarly work and providing networking opportunities. Holtz joined the school in fall 2011.

Lorraine Phillips, assistant professor, gave several presentations during the fall 2012 semester including: "Stereotypes about Physical Activity in the Older Adult Population" at the 8th Annual Health Ethics Conference in October and two presentations on research conducted with PhD student **Natalie Markis** – "Measuring Physical Activity in Residential Care/Assisted Living Residents with the Fitbit Motion Tracker®" at the 8th World Congress on Active Aging, Glasgow, Scotland, in August and "Evaluating the Fitbit Motion Tracker® in Residential Care/Assisted Living Residents" at the 65th Annual Scientific Meeting of the Gerontological Society of America in November.

Marilyn Rantz, Curators' Professor of nursing, was the 2012 Beverly H. Bowns Distinguished Visiting Professor Aug. 8, 2012, at the University of Tennessee College of Nursing. She gave the presentation, "Technological and Practice Innovations through Research – QIPMO, Aging in Place, TigerPlace, and Technology."

Two Sinclair School of Nursing posters received awards at the Robert Wood

CLASS NOTES

Johnson Foundation New Careers in Nursing Program Liaison's Summit in Washington, D.C., in October 2012. **Sherri Ulbrich**, assistant professor and Dr. Rosemary T. Porter Faculty Scholar, and **Cheryl Bausler**, assistant professor, won the poster award for Successful Recruitment and Retention Strategies for their poster, "Successful Orientation: Student Evaluation and Academic Outcomes After NCIN Pre-Entry Immersion Program," and Ulbrich and **Gregg Bush**, BSN '12, received the poster award for Leadership Development for Accelerated Students for their poster, "Tomorrow's Leaders – Today's Change: NCIN Scholars as Political Advocates."

STAFF

Aaron Hitchcock joined the Office of Research as administrative assistant in September. He received a bachelor of arts in fine art from MU in 2006.

STUDENTS

Rhonda Eickholt was recognized with an
Class Notes continued on page 24



SUBMITTED PHOTO

STUDENT NURSES FOR THE STATE

Twelve members of the Student Nurses Association attended the Missouri Nursing Students Association's 60th Anniversary Convention in St. Louis in October 2012. Three Mizzou nursing students were elected for leadership positions – **Megan Wasser**, Northern Region director; **Sarah Bohlman**, secretary; and **April Keel**, public relations. Attendees included, front row from left: Paige Barkar, Lauretta Myers, Lauren Smith, Emily Miller, Abby Williams and Stacey Frasher; Back row from left: Stephanie Lamb, Sarah Heenan, Megan Wasser, Sarah Bohlman, April Keel, Catherine Beehler and Donna Otto, clinical instructor emerita and SNA advisor. The 61st Annual MONSA Convention will be held in Columbia in October.

CLASS NOTES

Class Notes continued from 23

award from the Ravalli County Mental Health Coalition in October 2012 for her work in Ravalli County, Mont., regarding mental health disparities and stigma and for providing educational opportunities that require extensive involvement and leadership efforts. For the past three years, Eickholt has worked with the coalition, and in spring 2012 received a coalition grant that funded a portion of her DNP project – Rural Community Mental Health Education and Stigma Reduction Program. Associate professors Debra Gayer and Jane Bostick serve as committee member and chair, respectively, on Eickholt's project. She will graduate in May 2013.

Stacey Frasher, fall 2012 McNair Scholar, attended the Lymphedema Education Summit and American Lymphedema Framework Project Steering Committee meeting Aug. 13-14, 2012, at The Ohio State University.

PhD student **Jennifer Hulett**, BSN '95, MS(N) '99, and **Jane Armer**, professor, gave a poster presentation titled, "Breast Cancer Survivorship: Patients' Perspectives from Diagnosis through 30 Months Post-Treatment," at the Mayo Spiritual Care Research Conference at the Mayo Clinic in Rochester, Minn., in November 2012. Poster authors included Hulett; Armer; **Bob**

Stewart, professor emeritus; and **Ausanee Wanchai**, PhD '12. Hulett's research focuses on spirituality and health outcomes in breast cancer survivors.

Traditional BSN students **April Keel** and **Lauren Smith** attended the Mizzou Leadership Academy in 2012. The academy serves to train and educate current and aspiring student leaders. Keel is the 2nd vice president for the school's Student Nurses Association (SNA) and is public relations director for the Missouri Nursing Students Association. Smith is Mizzou's SNA legislative liaison.

Traditional BSN student **Hannah Keel**, received an Ann Crowe Essig Undergraduate Research Mentorship award in summer 2012. Keel worked with Tina Bloom, assistant professor, on several projects – completion of a survey of Missouri nurses about their level of involvement with health-related decision-making structures (such as participating on advisory/executive boards, commissions, committees, etc.), research on intimate partner violence prevention and education including interviews and interview transcription and presenting intimate partner violence education to nursing students.

PhD student **Deborah Manne** is newsletter editor for the Survivorship, Rehabilitation and

Quality of Life Special Interest Group of the Oncology Nursing Society.

Lauren Susmilch, BSN '11, is among 10,000 nurses and nursing students featured in Johnson & Johnson's Portrait of Thanks. Visit this link and enter Susmilch's name into the search box to see her picture in front of Jesse Hall and the Columns: <http://www.discovernursing.com/content/portrait-thanks-mosaic>. Susmilch currently works on a cardiac ICU stepdown unit at MacNeal Hospital in Berwyn, Ill.

IN MEMORY

J. Barton Boyle, a longtime friend of the school and member of the Dean's External Advisory Council, died Dec. 2, 2012. Boyle, BS BA '55, and his wife of 57 years, Charmian, BS Ed '55, met while students at Mizzou. He also held a master's in hospital administration from the University of Chicago. His career included positions as associate director of the MU Medical Center and administrator of The Ohio State University Hospitals and University of Oklahoma Hospital.

Marie Crenshaw, BSN '44, died Dec. 5, 2012, in Columbia. She served as a 2nd lieutenant in the Army Nurse Corps and later

Keep in Touch — Help us and your former classmates keep track of where you are and what you've been up to since graduating by sending in your news. Send to *Mizzou Nursing*, S218 School of Nursing, Columbia, MO 65211, or submit by email to mizzounursing@missouri.edu

Degree(s): _____ Date of graduation: _____

Name (including maiden): _____

Address: _____

Business address: _____

Phone: _____ Email: _____

Notes (please include personal or professional activities and achievements): _____

worked as a registered nurse at University of Missouri Hospital and Ellis Fischel Cancer Center. She was a member of MU Legacy Society. Memorials may be made to the MU Sinclair School of Nursing. Contact the

Office of Development at 573-884-3775 or websters@missouri.edu or mail to: Office of Development, S249 School of Nursing, Columbia, MO 65211.

Carol Jean Schlueter Newlin, BSN '58, died Nov. 30, 2012. She was born Nov. 3, 1936, in Columbia and married her late husband, Joseph M. Newlin on Sept. 6, 1958, in Columbia. She was a registered nurse.

Faculty & Student Publications

Below are select 2012 publications.

Remaining 2012 publications will appear in the fall 2013 issue.

Alexander, G.L. (2012). Editorial:

Considerations for clinical design and usability of IT in long term care. *Online Journal of Nursing Informatics (OJNI)*.

Alexander, G.L. & Hull, S.C. (2012).

Longitudinal care planning and coordination in long term and post-acute care settings. *CIN: Computers, Informatics, Nursing*, 30(9), 454-455.

Alexander, G.L. & Madsen R. (2012). A

case study in communication strategies used for pressure ulcer prevention in a nursing home with high IT sophistication. *Nursing Informatics 2012: Advancing Global Health through Informatics*. Montreal, Canada.

Anderst, J.D., Dowd, M.D., **Schnitzer, P.G.**,

Tryon, T. (2012). Preliminary development of a Rapid Assessment of Supervision Scale (RASS) for assessing adequacy of supervision in young children. *Pediatrics*, 129(6), 1517-1524.

Armer, J.M., & Cormier, J.N. (2012).

Standardized method for quantification of developing lymphedema in patients treated for breast cancer. *Breast Diseases: A Year Book Quarterly*, 22(4), 358-359.

Armer, J.M., & **Wanchai, A.** (PhD '12).

(2012). Editorial. Contributions of international nursing research. *Western Journal of Nursing Research*, 34(7), 859-61.

Bader, V., DeWater, S., Giboney, S., Greening, C., Haycraft, K., Hinck, S., Iman, K., Kimble, S., Kliethermes, J., LaFevers, W., **Pennington, L.**, Roberts, M., Voss, S., Waddell, P., Wilson, T., Whiffen, B., Zaner, N. (2012). The status of advanced practice nurses in Missouri: A white paper. K. Haycraft & S. Voss (Eds.). Missouri Nurses Association.

Beck, M., **Wanchai, A.** (PhD '12), **Stewart, B.R.**, Cormier, J.N. & **Armer, J.M.** (2012). Palliative care for cancer-related lymphedema: A systematic review. *Journal of Palliative Medicine*, 15(7), 1-7.

Coleman, M., & **Ganong, L.** (2012). Relationships in older stepfamilies. In R. Blieszner & V. Bedford (Eds.). *Handbook of Families and Aging 2nd ed.* (pp. 213-242). NY: Praeger.

Coleman, M., **Ganong, L.**, & Russell, L.T. (2012). Resilience in stepfamilies. In D. Becvar (Ed.), *Handbook on Family Resilience*. NY: Springer.

Coleman, M., **Ganong, L.**, & Russell, L.T.

(2012). Resilience in stepfamilies. In D. Becvar (Ed.), *Handbook on Family Resilience*. NY: Springer.

Conn, V. (2012). All that glitters is not gold. *Western Journal of Nursing Research*, 34, 3-5.

Conn, V. (2012). Role of the RPS in alleviating symptoms of acute and chronic RDD. *Western Journal of Nursing Research*, 34, 999-1001.

Conn, V. (2012). The future of nursing: It's in the numbers. *Western Journal of Nursing Research*, 34, 151-152.

Conn, V. (2012). Unpacking the black box: Countering the problem of inadequate intervention descriptions in research reports. *Western Journal of Nursing Research*, 34, 427-433.

Conn, V., & **Armer, J.** (2012). Meta-analysis and public policy: Opportunity for nursing impact. *Nursing Outlook*, 60, 297-304.

Conn, V., **Phillips, L.**, **Ruppar, T.**, & **Chase, J.** (PhD student). (2012). Physical activity interventions with healthy minority adults: Meta-analysis of behavior and health outcomes. *Journal of Health Care for the Poor & Underserved*, 23, 59-80.

Conn, V., **Ruppar, T.**, **Phillips, L.**, & **Chase, J.** (PhD student). (2012). Using meta-analyses for comparative effectiveness research. *Nursing Outlook*, 60, 182-190.

PUBLICATION ACCOLADES

Nursing Outlook named the article below "Best Research Article for 2012."

Rantz, M. J., **Phillips, L.**, **Aud, M.**, **Popejoy, L.**, Marek, K. D., Hicks, L. L., Zaniletti, I., & Miller, S. J. (2011). Evaluation of aging in place model with home care services and registered nurse care coordination in senior housing. *Nursing Outlook*, 59(1), 37-46.

The *Journal of the American Medical Directors Association* (JAMADA) found that the 2006 paper below had the third most citations of any paper the journal has ever published!

Bostick, J.E., **Rantz, M.J.**, **Flesner, M.K.**, and **Riggs, C.J.** (2006). Systematic review of studies of staffing and quality in nursing homes. *Journal of the American Medical Directors Association*, 7(6), 366-376.

Amelia Sherinski, a December 2012 graduate of the traditional BSN program, had an editorial published in the magazine *Nursing2012*. Her piece focused on how simulations mimicking real-world imperfect situations help nursing students learn communication techniques and clinical skills before caring for patients.



Sherinski, A. (2012). Striving for... imperfection? *Nursing2012*, 42(10), 18-19.

From the Office of Development

MEET THE DEAN

Alumni and friends gathered at the school for a “Meet the Dean” reception Oct. 18, 2012. In addition to hearing a presentation from Dean Judith Fitzgerald Miller, attendees toured the Essig Clinical Simulation Learning Center (ECSLC) and Miller Safe Practices Room with presentations by Gretchen Gregory, instructor and director of the ECSLC, and Lea Wood, ECSLC coordinator. Attendees found the high-tech learning tools and use of digital technology captivating. **Pictured from left:** Gail Hubbell, Wood, Miller and Ira Hubbell.



SHOSHANA HERRNDON

FUND THE DRIVE FOR NURSES

The school of nursing raised more than \$19,000 for student scholarships through the 12th Annual Fund the Drive for Nurses Golf Tournament Oct. 1, 2012, at the Country Club of Missouri. More than \$220,000 has been raised since the tournament's inception. Tournament proceeds benefit Fund the Drive for Nurses Scholarships and the Dean's Fund for Excellence. The tournament drew about 70 participants and volunteers including Lisa Piccone, a presenting sponsor and owner of PIC-1 Medical, and a team representing presenting sponsors University of Missouri Health Care and University Physicians. The tournament also received special sponsorships from Miller's Professional Imaging/Mpix and Gary and Ginny Evans. **Pictured:** Kenny Imhoff, Bubby Oliver, Gary Smith, Dean Judith Fitzgerald Miller and Morris Burger.



SHOSHANA HERRNDON



SHOSHANA HERRNDON

RETIRED FACULTY RETURN

The school hosted a tea reception for former faculty Aug. 8, 2012, at the Tiger Bistro in Donald W. Reynolds Alumni Center. Dean Judith Fitzgerald Miller gave a short presentation on the school's advancements and attendees enjoyed reconnecting with friends and colleagues. **Front row, from left:** Mary Margaret Bayer; Elizabeth Geden, professor emerita; Susan Taylor, professor emerita; Marge Whitman; Caroline Davis; Alice F. Kuehn, associate professor emerita; Vicki Conn, associate dean; Rosemary Porter, associate professor and dean emerita; Verna Adwell Rhodes, professor emerita; Linda Evans; and Kathryn Burks.

Planting seeds for the future

Caroline Davis is providing for future nursing faculty through her Mizzou Legacy



D. Caroline Davis, BSN '65, MS(N) '90, knows all about planting seeds for the future. Caroline has been a trailblazer throughout her career at Mizzou and in the profession of nursing. As an instructor of clinical nursing and the first alumni relations and development staffer for the MU Sinclair School of Nursing, Caroline knows how important it is to respect and support the faculty at her school. Caroline accomplished state and national impact through her administrative and lobbying efforts on behalf of her profession as the executive director of the Missouri Nurses Association (MONA). Now, as she considers her Mizzou Legacy, Caroline is giving back to her alma mater by leaving a bequest that will establish the *D. Caroline Davis Junior Research Fellow Endowment*. This gift will support young nursing research faculty who will continue the circle of knowledge for her beloved profession.

"I have had so many advantages because of my experience here at Mizzou. It is a privilege to express my gratitude in this way," Caroline says. "I encourage my fellow alumni to show their spirit of appreciation by joining me in giving back."



You, too, can establish a Mizzou Legacy that fits your financial needs and helps meet your philanthropic goals. To learn more about planned giving and endowments, visit <http://giving.missouri.edu/giftplanning>.

For more information about how to establish your own Mizzou Legacy
within the MU Sinclair School of Nursing, call 573-884-3775.

University of Missouri • MU Sinclair School of Nursing • S249 School of Nursing • Columbia, MO 65211

MU Sinclair
School of Nursing

University of Missouri Health System

S218 School of Nursing
Columbia, MO 65211-4120

You are cordially invited

23rd Annual Nursing Banquet and Awards Ceremony

Friday, April 5, 2013

Donald W. Reynolds Alumni Center
University of Missouri, Columbia, Mo.

Reception
5:30 p.m., The Great Room

Banquet & Awards Ceremony
6:30 p.m., The Columns

Business attire requested

Menu and registration information are on the back of the envelope in this magazine. Please fill out your response and
enclose a check made payable to the MU School of Nursing and return by March 15, 2013.
Sponsorship opportunities are available on page 19.
see page at right for details

YOUR INVITATION IS INSIDE

*Find full banquet details
in this magazine*

- Banquet registration, p. 18
- Award recipients, p. 14
- Sponsorships, p. 19

Alumni Reunion

**Featuring graduates of 1943, '53, '63, '73, '83, '93, '03*

Saturday, April 6, 2013

8:30 a.m. - 2:30 p.m.

Class reunions and tours held on the
University of Missouri campus

Schedule of Events

- 8:30 a.m. - Welcome and registration (University of Missouri Hospital lobby)
- 9 a.m. - Hospital tour
- 10 a.m. - Sinclair School of Nursing tour and simulation learning demonstrations
- Noon - Lunch in S455, School of Nursing building
- 1:30 p.m. - 2:30 p.m. - "MU: Then and Now"

Reply using the envelope in this magazine
by March 15, 2013.

MU Sinclair School of Nursing Banquet and Awards Ceremony and Alumni Reunion Registration

Registration deadline March 15, 2013

Name _____	Menu choice <input type="checkbox"/> A <input type="checkbox"/> B	Guest name(s) _____	Menu choice <input type="checkbox"/> A <input type="checkbox"/> B
Maiden name (alumni only) _____		_____	<input type="checkbox"/> A <input type="checkbox"/> B
Address _____		_____	<input type="checkbox"/> A <input type="checkbox"/> B
City _____ State _____ Zip _____		_____	<input type="checkbox"/> A <input type="checkbox"/> B
Daytime phone _____		_____	<input type="checkbox"/> A <input type="checkbox"/> B
E-mail _____			
Nursing alumni class year: BSN _____ MS(N) _____ PhD _____		Please seat me/us with the Class of _____	

Banquet Menu

For each person, please choose an entree and indicate your preference adjacent to the name above.

A) Petite Filet Mignon paired with chicken breast topped with rosemary sherry sauce, oven roasted red potatoes, butter poached asparagus with topped baby carrots, served with salad, rolls and dessert.

B) Vegetable Strudel - Fresh vegetables with basil herb butter baked in a phyllo pastry, placed atop a roma tomato sauce, served with salad, rolls and dessert.

Friday, April 5

Banquet and Awards Ceremony# _____	\$45 each	\$ _____	Totals
Student (MU nursing students only) # _____	\$25 each	\$ _____	
*Sponsorship(s) # _____	\$50 each	\$ _____	

Saturday, April 6

University Hospital and School of Nursing tour # _____	No charge	
Luncheon # _____	\$12 each	\$ _____
Virtual campus tour # _____	No charge	
GRAND TOTAL		\$ _____

**Registration deadline:
March 15, 2013**

*I would like to make a tax-deductible donation toward the banquet and enable nursing students and award nominees to attend. Sponsorships and donations received by March 8, 2013, will be acknowledged in the printed program.

Make checks payable to: **MU Sinclair School of Nursing**



48664

MU SINCLAIR SCHOOL OF NURSING
C/O SANDRA DAVIS
UNIVERSITY OF MISSOURI
S212 SCHOOL OF NURSING
COLUMBIA, MISSOURI 65201-9984

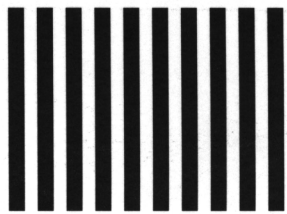
POSTAGE WILL BE PAID BY ADDRESSEE


BUSINESS REPLY MAIL
FIRST-CLASS MAIL PERMIT NO 6 COLUMBIA MO

CX786723000



NO POSTAGE
NECESSARY
IF MAILED
IN THE
UNITED STATES



 Sinclair
School of Nursing

Join us April 5 & 6, 2013

Don't miss the 23rd Annual MU Sinclair School of Nursing Banquet & Awards Ceremony and Nursing Alumni Reunion. Please fill out the registration information inside and return with your payment by March 15, 2013.

R.s.v.p. today!



University Libraries
University of Missouri

Digitization Information Page

Local identifier MizzouNursing2010Fall

Source information

Format Book
Content type Text with images
Source ID C:15/00/4 FF11 Box 1
Notes mailer envelope included in this magazine

Capture information

Date captured April 2022
Scanner manufacturer Plustek OpticBook
Scanner model A300 Plus
Scanning system software Book Pavilion
Optical resolution 600 dpi
Color settings 24 bit color
File types tiff
Notes

Derivatives - Access copy

Compression Tiff: LZW compression
Editing software Adobe Photoshop CC
Resolution 600 dpi
Color color covers; grayscale for the rest
File types pdf created from tiffs
Notes Images cropped, straightened, brightened
Scans of the mailer envelope placed after the back cover in the pdf