

# MIZZOU WEEKLY

The University of Missouri - Columbia

Oct. 22, 1982

Inside —

Survey rates doctoral programs

## Board of Curators approves winter semester fee surcharge

An 11.2 percent surcharge on student fees for the 1983 winter semester, with a \$150 limit on the increase paid by a single student, was approved by the Board of Curators last Friday.

The surcharge, estimated to generate approximately \$3.3 million, will help the University meet the 2 percent withholding of this year's budget (equal to \$3.4 million) ordered by Gov. Christopher Bond in early October.

UM President James Olson had originally recommended a 14.7 percent surcharge to the Board, which would have resulted in a \$75 increase paid by full-time Missouri undergraduates and \$225 for out-of-state undergraduate students.

The 11.2 percent surcharge will cost residents an additional \$57.12, raising student fees to \$567.12, while an out-of-state undergraduate student will pay the maximum of \$150 for fees totaling \$1,704.

Campus contingency funds may still have to be used this fiscal year to meet the 2 percent withholding if next semester's surcharge does not generate the estimated income, Olson warned.

UM Vice President James Buchholz explained that "a blend of different measures" was used to recalculate the income from a fee increase for next semester. Factors such as percentage of total revenue, amount per credit hour as well as predictions for next semester's enrollment were used in reaching the revised figures.

"We can't project this with absolute accuracy," Olson said.

If the governor announces additional withholdings, Olson said the contingency funds would be used and expenditures would be deferred.

A University employee enrolled in a three-hour graduate course through the Educational Assistance Program will pay an extra \$4.10 next semester, due to the 11.2 percent surcharge on student fees approved by the Board of Curators.

The surcharge, which will be \$16.38 for a Missouri resident taking three hours of graduate credit, will be added to the incidental fee.

Employees enrolled through EAP will pay one-fourth of that total, while the University pays three-fourths.

University employees classified at least 75 percent full-time who have completed the six-month probationary period are eligible to take up to six hours a semester (three in the summer) through EAP.

Part-time resident fees including the 11.2 percent surcharge, are \$49.48 per credit hour for undergraduates and \$54.21 per credit hour for graduate students.

Olson also announced that fall enrollment at the University was 56,021, down 1.4 percent from last year. Enrollment of 7,795 was up by 3.1 percent at Rolla, while the Columbia campus had the smallest decrease: 1 percent for an enrollment of 24,763. UMKC had the greatest decrease, with 3.1 percent fewer students than last year for a total of 11,419, while UMSL

(Continued on page 3)

## Homecoming royalty crowned



Lori Potts and James Chailland were crowned 1982 Homecoming queen and king Oct. 16. Potts is a physical therapy major from Bridgeton, Mo.; Chailland, from Lake St. Louis, is studying journalism.

## Campus representatives seek United Way contributions

Campus representatives are now asking their colleagues to contribute to the United Way campaign. Locally, the non-profit organization has 26 member agencies that provide our community with essential health, rehabilitative, counseling and character-building services.

The University's campaign goal is \$135,000 this year, a significant portion of the \$640,000 local goal. To reach our goal, several University volunteers are asking for your support.

The volunteers and their areas are:

### ACADEMIC I REGION

Chairman: Dale Spencer

Associate Chairman: Stanley Hille

Academic I Region volunteers are:  
District Chairmen: College of Business and Public Administration, Robert Denhardt; College of Education, Charles Koelling; College of Engineering, Jack Lysen; College of Home Economics, Richard Dowdy; School of Journalism, Won Chang; School of Law, Terry Bashor; School of Library and Information Science, Maydell Senn;

School of Medicine, William Bradshaw;

Unit Chairmen: Curriculum and Instruction, Dorothy Watson; Dean's Office, Bob Reifschneider; Education Administration, James Craigmile; Health and Physical Education, James Brown; Higher and Adult Education and Foundation, Gary Fox; Missouri Testing and Evaluation, Harry Snyder; Practical Arts and Vocational-Technical Education, Joan Quilling; Special Education, Lynn Barnett and Anna McFadden.

### ACADEMIC II REGION

Chairman: John Mowrer

Associate Chairman: John Bauman

Academic II Region volunteers are:  
Agriculture-District Chairman, John G. Gross; Unit Chairmen: Ag Experiment Station-Home Economics, Roger Morrison; Ag Experiment Station-Vet Med, Roger Morrison; Ag Dean's Office, Roger Morrison; Ag Economics, Jane Buckler; Ag Engineering, Neil Meador; Ag Education, Curt Weston; Ag Information, Richard Lee; Agronomy, Roger Mitchell; Animal Science, Bobby Moser;

Atmospheric Science, Wayne Decker; Biochemistry, Ola Mae Taggart; Biological Science, Roger Morrison; Dairy Science, Terry Fetterly; Director of Agriculture, Roger Morrison; Entomology, Tom Yonke; Food Science and Nutrition, Joe Edmondson; Forestry, Fisheries and Wildlife, Donna Jackson; Horticulture, Dave Trinklein; Plant Pathology, Marcia Easley; Poultry, Mary Smith; Rural Sociology, Mike Nolan.

Arts and Science-District Chairwoman, Sadie McFadin; Unit Chairmen: American Archaeology, Clyde Wilson; Anthropology, Clyde Wilson; Art, Bob Bussabarger; Art History, Norman Land; Biological Sciences, Henry McQuade; Chemistry, John Bauman; Classical Studies, John Thibault;

Computer Science, Don Shurtleff; Dean's Office, Helen Chrisman; Economics, Daryl Short; English, Dick Hocks; General Studies, Phyllis Ward; Geography, Walter Schroeder; Geology, Thomas Freeman; Germanic and Slavic Languages, Adolph Schroeder; History, Charles Timberlake; Honors College, Ted

Tarkow; Mathematics, Joe Zemmer; Music, Harry Morrison; Philosophy, Bill Bondeson; Physics, Eugene Hensley; Political Science, Fred Spiegel; Psychology, Esther Thelen; Religious Studies, Joel Brereton; Romance Languages, W. Albert Brent; Speech and Dramatic Arts, Mike Porter; Sociology, Barbara Bank; Statistics, Fred Williams.

Extension-District Chairman, Don Fancher; Unit Chairmen: Center for Independent Study, Roger Young; Conference and Short Courses, Walter Wilkening; Cooperative Extension, Carol Slusher; Extension Teaching, Roger Young; Instructional Media Lab, Carol Slusher; Labor Education Extension, Carol Slusher; Severely Handicapped, Carol Slusher; University of Mid-America, Carol Slusher; Vice-Provost, Extension, Carol Slusher; and Youth and 4-H, Mike Loveless.

Nursing-District Chairwoman, Betty Layer; Unit Chairwoman, Anita Ruga. Public and Community Service-District Chairman, Glen Gillespie; Unit

(Continued on page 2)

# Around the Campus

**SUGGESTION PROGRAM**—Some 40 UMC employees have responded to Chancellor Barbara S. Uehling's cost-saving suggestion program that began in September. The proposed ideas range from replacing disposable interoffice communication envelopes with a reusable variety to automating payroll and personnel functions by using employee identification cards.

Other suggestions include consolidating purchase orders for specific vendors and filing weekly absence reports instead of individual ones.

A specially appointed committee will consider the merit of the savings suggestions during the next few weeks.

Employees may offer cost-savings suggestions to the chancellor through the Committee on Cost-Savings Suggestions, which is chaired by Duane Stuckey, director of institutional research and planning.

**"THE DERANGEMENT OF AMERICAN POLITICS"** will be the subject of the Rufus Monroe-Sophie Paine Lecture in Public Affairs Oct. 22. James MacGregor Burns, president of the International Society of Political Psychology, will present the lecture at 8 p.m. in the Memorial Union Auditorium.

Burns, who is past president of the American Political Science Association, is co-author of one of the most widely used textbooks in the field of American politics.

**THE UNIVERSITY CHAPTER OF PROFESSIONAL SECRETARIES INTERNATIONAL** will meet at 7 p.m. Oct. 26 at the Western Sizzlin Steak House, 1710 I-70 Drive Southwest.

The program will include presentation of 1982 Certified Professional Secretary awards to University Chapter members Barbara Olson Smith, senior secretary, and Margie M. Miller, administrative secretary.

Guest speaker Jo Behymer, associate professor of education, will discuss "Dress for Success." A short business meeting will follow.

For reservations, call Pat Burbridge at 882-4701 by noon Oct. 25.

**THE CHAMBER MUSIC SERIES** will sponsor a performance by French horn virtuoso Barry Tuckwell at 8 p.m. Oct. 27 in Jesse Auditorium. He will be assisted by Leanne Hillmer on the piano.

Tuckwell's selections will include Rossini's "Prelude, Theme and Variations," Schumann's "Adagio and Allegro in A flat major, Op. 70" and Dukas' "Villanelle."

Tickets are \$8 general admission and \$7 students; they will be available from 10 a.m. to 4 p.m. Oct. 26-27 at Jesse Box Office.

**A MINI SECRETARY-SPEAKOUT** will be presented by the University Chapter, Professional Secretaries International, from 9 a.m. to 4 p.m. Nov. 4 at the Campus Inn, 1112 Stadium Blvd. Registration will begin at 8:30 a.m.; however, participants must reserve a space by calling 882-3741 by Oct. 27.

According to the Education Committee of University Chapter, PSI, the event is a spin-off of speakouts offered on the international level by PSI. A panel of three will address topical subjects throughout the day.

The morning session topic will be "The Professional Secretary's New Identity in the Information Age." Panelists will be Mary Coats, executive staff assistant I, Barbara Spear, assistant to the chancellor, UMKC and Kathleen Brown, certified professional secretary, administrative assistant and acting clinic manager, Institute of Ophthalmology, School of Medicine/Hospital and Clinics.

The afternoon session, "Image, Ethics and Etiquette," will follow a noon luncheon. Panelists will be Adella LaRue, certified professional secretary, international director, southwest district, PSI; Howard Kincaid, assistant hospital director, administrative services, Hospital and Clinics; and Martha Jo Martin, assistant dean, College of Home Economics.

Panelists will have 30 minutes to address the issues before entertaining questions from participants.

Secretaries from the University campus and the Columbia, Boonville, Mexico and Jefferson city chapters of PSI may participate.

**"ETHNICITY-AMERICAN STYLE"** will be the topic of a University Assembly Lecture Oct. 28. Alan Jabbour, director of the American Folklife Center, will examine theories of ethnicity and the characteristics and effects of cultural diversity in American life.

The lecture begins at 3:40 p.m. in 114 Arts & Science. It is partially supported by a grant from the Missouri Committee for the Humanities Inc. to the Missouri Folklore Society.

**"PERSONAL ART AND ORNAMENT IN THE ANCIENT WORLD,"** a symposium focusing on jewelry, belt buckles, clothing, knives, tokens and amulets worn in ancient times, will be held Oct.

23 and 24 in the Museum of Art and Archaeology, Pickard Hall.

To register for the free program, call 882-3591. The symposium is sponsored by the Archaeological Institute of America and supported by a grant from the Missouri Committees for the Humanities Inc.

**A LATIN AMERICA COLLOQUIUM** is scheduled for 3:40 p.m. Oct. 26 in the International Center Lounge of Gentry Hall. Thomas G. Sanders, a Universities Field Staff International associate, will speak on "Politics and Development in Latin America: The Challenge of the 80's."

## Letter to the Editor

To the Editor:

The Oct. 8, 1982 issue of *Mizzou Weekly* included the listing of committees, councils and boards. At the risk of being labeled as too sensitive or lacking in a sense of humor, I would like to comment on the insertions of definitions and quotations, all of which presented negative perspectives on the functioning and effectiveness of committees.

The University community would be better served if the positive aspects were

emphasized. A large number of people devote considerable time and energy to the listed committees. The functions they perform are necessary to the welfare of the campus. There is little enough recognition of these contributions. We could certainly do without downgrading or demeaning commentary.

Susan Taylor  
Chairwoman,

Status of Women Committee

## Policy approved for posting items

To discourage defacement of University property, a policy for posting materials on campus was approved recently. Groups wishing to post announcements should heed the following guidelines; violations of the regulations may be considered acts of vandalism and will be subject to appropriate action.

- All posters and materials must be placed on appropriate bulletin boards; sponsoring organizations must be identified on all materials.

- All exterior bulletin boards are free for appropriate use, but University-sponsored activities will have priority of space. The department or building coordinator must approve use of interior bulletin boards, or items may be removed.

- Materials should be posted one week before the event or at the beginning of

ticket sales. Those posting items are responsible for their removal.

- Bulletin boards in residence halls are for official notices and announcements. The residence hall coordinator should approve all materials that are posted.

- No materials may be attached to the inside or outside of University buildings, or to light posts, telephone poles, trees, trash cans or automobile windshields unless approved by the Business Operations Office.

- No materials shall be posted in resident halls unless approved by the Office of Residential Life; materials posted in Memorial Union and Brady Commons must be approved by the Office of Memorial Union and Brady Commons.

- Notices may not be chalked on sidewalks or buildings.

## United Way (from page 1)

Chairmen: Community Development, Jim Cook; Recreation and Park Administration, Steve Lamphear; Social Work, Lea Tindall.

Veterinary Medicine—District Chairman, Louis Corwin; Unit Chairmen: Dean of Veterinary Medicine, Ben Riley; Vet Anatomy/Physiology, Vincent St. Omer; Vet Diagnostic Lab, William Fales; Vet Medicine and Surgery, Ron Haffey; Vet Microbiology, Andrew Carson; Vet Pathology, Larry Thornburg.

**ADMINISTRATIVE REGION**  
Chairwoman: Suzanne Holland  
Associate Chairman: Don Hoehle  
Administrative Region volunteers are: District Chairmen: Alumni and Development, Anne Carman; Chancellor's Office, Jane Dier-Russell; Institutional Research, Dick Otto; News Services, Diane Caldwell; Security, Ron Mason; University Relations, John Glover;

Associate Vice Chancellor for Administrative Services Office, Becky Jones; Business Operations Office, Emmett Klinkerman; Fiscal Operations, Gary Zwonitzer; Intercollegiate Athletics, John Rawlings; Libraries, Pat Burbridge; Personnel/Employee Relations, Ron Petit; Physical Facilities, Mary Hulse; Provost's Office, Gary Smith;

Vice Chancellor for Student Services Office, Richard Anderson; Brady

Commons/Bookstore, Lowry Henley; Counseling Services, Karen Caldwell; Memorial Union, Yvonne Snell; Residential Life, Martha Fortney, Jack Uhler, John Humlicek; Student Development, Margy Hanington; Student Financial Aid, Mary Ann Canton; Student Health Service, Carolyn Bussjaeger;

Vice Chancellor for Administrative Services Office, Carolyn Kemper.

**HOSPITAL AND CLINICS REGION**  
Chairwoman: Gina Kincaid  
Associate Chairwoman: Kathy Leach  
Hospital and Clinics Region volunteers are: District Chairmen: Administrative Services, Mary Davis; Emergency and Support Services, Fred Dutton; Financial Services, Judy Strickland; Nursing Services, Jim Clark; Operations and Planning, Chuck Worstell; Professional Services, Barb Schell.

**RETIREES REGION**  
Chairman: Loren Reid  
Associate Chairman: J.M. Poehlman

**UMca REGION**  
Chairman: James R. Buchholz

UMca Region volunteers are: District Chairmen, Administrative Area: General Counsel, Sue Hagan; President's Office, Duana Linville, Marilyn Selovich; University Relations, Guy Horton.

District Chairmen, Administrative Affairs: Budget Development and Planning Services, Judy Vickrey; In-

ternal Auditing, Harold Boyer; Investments and Trusts, Special Projects, Treasurer's Office, Phyllis Crawford.

Personnel Services and Staff Relations—District Chairman, Ken Hutchinson; Unit Chairmen: Affirmative Action and Staff Relations, Donna Albro; Human Resource Development, Salary-Wage and Resource Operations, Forest Benedict; Staff Benefits and Personnel Records, Mike Reese; Student Financial Aid, Phillip Rokicki;

Administrative and User Services, Computing and Information Systems, Management Services—District Chairman, John Jenkins; Unit Chairmen: Information Systems, Penny Shepherd; Network Operations, Jane Schultz;

Financial Services—District Chairman, Kent Shelton; Unit Chairmen: Accounting Services, Jim Weaver; Budget Services, Dennis Blossom; Sponsored Program Services, Rudy Koch;

Business Services—District Chairman, Tom Hussey; Unit Chairmen: Business Services Operations, Printing Services and Microfilm Operation, Deb Rossino; Facilities Management and Construction, Mark Langford; Facilities Planning and Development, Mike Haggans; Food Purchasing Operations, Purchasing, Harry Fields; Property and Risk Management, Transportation, Gebe Ejigu;

Academic Affairs—District Chairman, Tom Clevenger;  
Western Historical Manuscript, State Historical Society—District Chairman, Richard Brownlee;

UMca Extension Units—District Chairwoman, Pat Jarboe.

Chancellor Barbara Uehling is chairwoman of the entire University campaign; Gerald T. Brouder serves as co-chairman. Kee Groshong is in charge of the campaign office and record keeping and Sharon Yoder is head of promotion.

At press time, not all names of the volunteers were available; they will be printed in *Mizzou Weekly* at a later date.

# MIZZOU WEEKLY

Vol. 4, No. 8

A publication of the University of Missouri-Columbia faculty and staff, published every Friday during the academic year and once a month during the summer by the Office of Internal Communication, University Relations Division, 606 Maryland Ave. News deadline is noon Friday of the week before the issue.

Advisory Board: Keith Sanders, Delmar Hatesohl, Roy Utz, Gerald Brouder, Marjorie Marberry, Harri Palmer, Jim Brechbuhler, Bob Derryberry, Lealure Tindall.

Editor: Diana Reese  
Assistant Editor: Carol Kirchner  
Editorial Staff: Francine Parker

Telephone: 882-6004

# UMC rates below average in study of 5 doctoral programs

The University's below-average rating in a recent study of doctoral programs in mathematics and physical sciences suggests that two questions need answering, said Richard Wallace, interim dean of Arts and Science.

"One, why did we turn out that way? And two, what can we do to change?" Wallace asked.

He also stressed that the survey said nothing about the quality of undergraduate instruction in those disciplines.

The first question cannot be adequately answered until the data on which the survey was based is released to the participating universities, Wallace said.

He said he believed, however, that "the perception of our overall stature as a research institution" was a relevant factor in explaining the University's ranking.

"Even for an outstanding department, there is still the institutional perception

to overcome," Wallace said.

The study of 596 doctoral programs in six areas—chemistry, computer science, geoscience, mathematics, physics and statistics and biostatistics—was published last month by the National Academy Press. Results of the study also appeared in the Sept. 29 issue of *The Chronicle for Higher Education*.

The survey was conducted by a committee appointed by the Conference Board of Associated Research Councils, and is the first major study since one done by the American Council on Education in 1969.

According to the *Chronicle*, 16 separate measures related to quality were listed in the study. A reputational survey was also completed by 1,155 faculty members in the six disciplines who were asked to rate the scholarly competence and achievements of the faculty members, the effectiveness of the programs in educating research scholars and scien-

tists, the improvement of the programs over the past five years and their familiarity with faculty members in the programs being rated.

Studies of doctoral programs in 26 other fields will be released at a later date.

"Where do we go from here? How do we improve?" asked Wallace. "We've not worked hard enough, in the 15 years I've been here, in getting ourselves better funded, particularly with the large federal agencies."

Wallace explained that not only would additional proposals to such agencies generate more income for research at UMC, but that the members of those review committees for grants were often members of such committees as the one conducting the study of quality of doctoral programs.

"If they're not seeing creative research proposals from this institution, that in-

fluences their perceptions of us," Wallace said.

Faculty members should also pursue the editorships of scholarly journals more aggressively as well as serve on more editorial boards, Wallace advised.

"It gets the University better known and gets the articles of our faculty accepted more readily," Wallace said.

In addition, Chancellor Barbara Uehling has stated objectives which would help the public perception of the University's research ability.

The improvement of support services and enhancement of incentives and rewards for faculty doing research are among those goals, Wallace said. "For example, the return of indirect costs (of grants) to the departments is a step in the right direction."

Following are partial results of the survey, including the ratings of UMC along with other institutions in the Big Eight.

	CHEMISTRY				GEOSCIENCES				MATHEMATICS				PHYSICS				STATISTICS			
	Faculty quality	Effectiveness	Improvement	Familiarity	Faculty quality	Effectiveness	Improvement	Familiarity	Faculty quality	Effectiveness	Improvement	Familiarity	Faculty quality	Effectiveness	Improvement	Familiarity	Faculty quality	Effectiveness	Improvement	Familiarity
UMC	42	40	45	45	41	41	39	40	41	39	40	43	43	43	66	41	44	46	44	45
Colorado	58	57	58	58	52	55	54	54	52	54	55	49	54	55	44		n.a.	n.a.	n.a.	n.a.
Iowa State	60	63	47	61	41	37	52	38	45	44	39	43	53	52	46	50	62	64	53	64
Kansas	50	53	40	47	49	50	44	49	46	46	39	44	45	46	45	47	n.a.	n.a.	n.a.	n.a.
Kansas State	49	49	61	50	n.a.	n.a.	n.a.	n.a.	n.a.	n.a.	n.a.	n.a.	43	41	42	41	40	43	49	37
Nebraska	53	54	71	53	n.a.	n.a.	n.a.	n.a.	42	41	48	40	48	48	45	46	n.a.	n.a.	n.a.	n.a.
Oklahoma	47	48	55	44	46	43	37	47	44	44	52	42	44	44	68	40	n.a.	n.a.	n.a.	n.a.
Oklahoma State	44	45	57	44	n.a.	n.a.	n.a.	n.a.	40	41	50	43	41	40	n.a.	37	39	46	45	40

## Curators (from page 1)

was down 2.9 percent with 12,035 students.

In other business at the meeting:

•The Curators approved two changes concerning the purchase of insurance for the University. The policy of insuring only specific properties on an exception basis was revised to allow insurance against catastrophic property losses.

Previously, only about one-fourth of the

University's facilities were covered by insurance, since the institution has relied on the state to appropriate money in the event of major property losses.

The University has a high concentration of property at certain locations where a single peril could cause as much as a \$300 million loss however, and coverage could be purchased for less than \$200,000 a year.

The Curators also voted to change their practice of using only one insurance broker and will now be represented by three who will competitively place and service the University's insurance needs.

•The Board approved a contract for construction of a building to house the Cosmopolitan International Diabetes Center on the Columbia campus.

The low bid of \$666,000 was submitted

by Reinhardt Construction Co. of Centralia.

More than \$500,000 has been raised for the 8,000 square-foot facility by Cosmopolitan International.

•The Board amended the equal employment opportunity program statement to include "status as a Vietnam-era veteran" in the non-discrimination policy.

## Jobs

### Faculty listings

The following teaching and research positions are available at the University; however, all of the positions are dependent upon funding and enrollment. For more information, call the office of the associate provost, 116 Jesse, at 882-2094.

Visiting instructor/assistant professor/post doctoral fellow of statistics—available January 1983 to May 1983. Responsibilities include teaching one or two courses at the undergraduate and graduate levels and conducting research. Requires Ph.D.; rank and salary depend upon qualifications.

Ability to publish research in statistical journals and to communicate and work well with people desired. Deadline Oct. 31, 1982.

Physiology Research Assistant—available Nov. 1, 1982 to June 30, 1983. Responsibilities include performing radioimmunoassays for angiotensin I, prostaglandin E2 and several adrenal steroids and a radioenzymatic assay for tissue and plasma catecholamines. Additional duties include measurements of plasma electrolytes and renal clearances, ordering supplies for laboratory and training new technicians.

Requires bachelor's degree in biology or chemistry and at least five years experience in medical science laboratory. Prior work experience with radioimmunoassays is essential, as is familiarity with chromatographic procedures and flame photometry. Must be willing to stay with program several years. Deadline Oct. 31, 1982.

### Staff listings

The following job openings at the University were

approved and posted Monday, Oct. 18, and include the department where the vacancy exists. The openings are listed under the name of the personnel recruiting staff member handling the positions. For more information or to apply for a job, contact the appropriate recruiter at the Personnel Office, 309 Hitt St., at 882-4221. Salary codes follow each listing in parentheses.

#### CHARLES HUNTER

Administrative/Professional  
Coordinator, Special Assignments (E-8), University Relations-UMca; Director, Academic Asst. Program (E-13), Vice Chancellor Stu. Svcs./Provost, (deadline 11-1-81); Manager, Technical Services (E-10), Academic Support Center, (deadline 11-1-82).

#### MARY SLEDGE

Professional  
Assistant Manager, Acctg. Svcs. (E-9), Accounting Services; Director, Development Fund (E-12), Development fund; Residence Hall Coordinator, Residential Life (2), (deadline 10-29-82); Student Services Coordinator (E-7), Crafts Studio, (deadline 10-29-82); Student Services Coordinator (E-7), Minority Student Retention; Supervisor, Vet. Medical Records (M-58), Veterinary Medicine & Surgery.

#### CINDY MORRIS

Research/Data Processing  
Data Controller I (M-55), Vet. Med. Diag. Lab. (95% FTE); Research Specialist (E-5), Agronomy - UMC Delta Center (Portageville, MO.), Dalton Research center, Microbiology;  
Sr. Research/Engineering Tech. (M-63), Nuclear Engineering; Sr. Research Specialist (E-8), Microbiology; Supervisor, Science Inst. Shop-UMC (E-8), Graduate School.

#### JANE CORREIA

Secretarial  
Administrative Assistant (M-59), Budget & Payroll, School of Nursing; Administrative Secretary, UED - Economics; Sr. Secretary (M-57), Family and Community Medicine;  
Secretary (M-55), Aerospace Studies-ROTC, Business

& Public Adm.-Extension, Child Health, Electrical Engineering, Family & Community Medicine, Neurology, Medicine/Gastroenterology, Office Research, School of Nursing, UMC-Budget Office;  
Secretary-Stenographer (M-54), Economics, Budget Services-UMca; Sr. Stenographer (M-54), KOMU-TV, Music, School of Nursing, Social Work Ext. (ends 6-83); Sr. Clerk (M-55), English; Sr. Clerk Typist (M-54), Veterinary Medicine & Surgery, School of Nursing; Library Clerk II (M-53), Ellis Library.

#### CAROL WAITS

Part-time/Temporary  
Research/Laboratory Technician (M-56), Surgery, (20 hrs. per wk., perm.); Secretary (M-55), General Medicine, (F.T., Temp., till 3-83); Child Health, (20 hrs. per wk., perm.); Surgery, (20 hrs. per wk., perm.);  
Secretary-Stenographer (M-54), Animal Science Research Center, (20 hrs. per wk., perm.), Hours: 1:00-5:00 P.M.; Medicine/Endocrinology, (20 hrs. per wk., perm.) Recreation & Parks Administration, (20 hrs. per wk., Temp., till 6:30), (Hours: 1:00-5:00 P.M.)

The following jobs were listed by the Health Services Center Personnel Office. For more information, call 882-8186.

#### ANN NADLER

Administrative/Professional  
Administrative Dietician, Nutrition & Dietetics (1); Assistant Director, Operations and Planning Services; Assistant Manager, Medical Records; Assistant Manager, Patient Admissions; Child Life Activity Therapist, Pediatrics; Quality Assessment Analyst, Quality Assessment;  
Sr. Information Specialist, Public Relations & Development; Supervisor, Medical Records; Supervisor Hosp. Business Office, Patient Accounts.

#### LORI TANZER

Administrative/Professional  
Assistant Manager, Radiology; Radiation Physicist, Radiology.

#### PATTY SCOTT

Clerical  
Administrative Secretary, MPIP; Admissions Clerk, Admissions; Fiscal Assistant, Patient Accounts; Hospital Unit Clerk, MICU; Secretary, Operations and Planning;  
Secretary, Payroll and Budget; Senior Accounting Clerk, Hospital Accounting; Senior Clerk Typist, Medical Records; Senior Secretary, Nutrition & Dietetics.

#### GINA KINCAID


SANDRA FAWCETT  
Nursing  
Administrative Nurse I, Nursing (6); Clinical Nurse I, Nursing (4); Education Nurse I, Nursing (2); IV Nurse, Pharmacy (3);  
Licensed Practical Nurse, Nursing (4); Nurse Anesthetist, Anesthesiology (3); Nurse Practitioner; Staff Nurse, Nursing (15).

#### LORI TANZER

Technical  
Certified Respiratory Therapy Tech, Respiratory Therapy; Medical Technologist, Special Hematology; Medical Technologist, Microbiology; Occupational Therapist, Occupational Therapy (2);  
Physical Therapist, Hospital; Registered Respiratory Therapist, Respiratory Therapy; Sr. Systems Analyst, Pathology.


#### KEN KUSCHEL

Technical  
Drafting Technician, Plant Engineering.  
PART-TIME or TEMPORARY  
Clerk, Medique Gift Shop; Food Service Supervisor, Cafeteria; Hospital Unit Clerk, PICU; Licensed Practical Nurse, Nursing (2); Medical Technologist, Blood Bank;  
Pharmacy Technician; Sr. Receptionist, Emergency Dept.; Sr. Secretary, Nursing Service; Staff Nurse, Nursing (5); Student Assistant, Nursing (2).



# The Staff for Life

We're on call at the University Hospital and Clinics.



# This Week

To list your department or division's events in the next Mizzou Weekly, write or call the Office of Internal Communication, 606 Maryland, 882-6004, by Friday two weeks before the event is scheduled.

All events are free and open to the public unless otherwise noted.

## 22 Friday

**MSA Weekend Movie:** "Gallopoli," 7 and 9:30 p.m., Middlebush Aud. Tickets \$1 in advance, \$1.50 at the door.

**Astronomy Film and Telescope Viewing:** "Planet Mars" and "Clouds of Venus," 7 p.m., 114 Physics, followed by telescope viewing at 8 p.m. on the roof.

**Jesse Auditorium Series:** Anthony and Joseph Paratore, duo-piano, 8 p.m.. Jesse Aud. Public and faculty/staff \$10, students \$9.

**Gentry Studio Theatre Associates:** "This Property is Condemned," by Tennessee Williams, adapted by Steve Rinder, 7:30 p.m., basement Gentry. Tickets \$1 at the door.

**"Nursing Child Assessment Satellite Training,"** first of a four-day workshop offering new child health assessment techniques and other tools for health professionals working with young children. Call 882-6403 for registration information.

**Forestry Seminar:** "Habitat Activities of Wintering Ducks," Leigh Fredrickson, FFW, Gaylord Lab, 2:40 p.m., 2-7 Agriculture.

**Neuroscience Seminar:** "Some Aspects of Neurotoxicology," Vincent St. Omer, associate professor of veterinary anatomy, 7:30 p.m., 112 Lefevre.

**Humanities Lecture:** "Baroque Art" Osmund Overby, professor of art history and archaeology and director of the Museum of Art and Archaeology, 11:40 to 12:30 p.m., Ellis Aud.

**MSA Horseback Riding Trip:** Quail Ridge, Wentzville, Mo., leave Columbia 5:30 p.m., arrive back at 12:30 a.m., cost \$12.50, bring your own food. Tickets available at Memorial Union ticket window.

**Biochemistry Seminar:** "Structural Role of Phospholipid in Mitochondrial Energy Transfer," Chang-An Yu, department of biochemistry, Oklahoma State University, 3:40 p.m., 322 Chemistry Building.

**Monroe-Paine Lecture in Public Affairs:** "The Derangement of American Politics," James MacGregor Burns, president of the International Society of Political Psychology and past president of the American Political Science Association, 8 p.m., Memorial Union Aud.

## 23 Saturday

**MSA Weekend Movie:** "Dumbo," 2, 7 and 9:30 p.m., Jesse Aud. Tickets \$1 in advance, \$1.50 at the door.

**Football:** UMC vs. Nebraska, at Nebraska.

**Faculty Recital Series:** Sue Stubbs, brass, with members from the Esterhazy Quartet, 8 p.m., Fine Arts Recital Hall.

**Gentry Studio Theatre Associates:** "This Property is Condemned," by Tennessee Williams, adapted by Steve Rinder, 7:30 p.m., basement Gentry. Tickets \$1 at the door.

**Octoberfest:** Hermann, Mo., leave 8:30 a.m., back by 7:30 p.m., tickets \$4.50 for

students; \$6.50 for staff, must be 21. Tickets available at Memorial Union ticket window.

**MSA Craft Studio Workshop:** Paper-making, 10 a.m. to 2 p.m., 203 Brady Commons. \$12 fee. Make reservations at Memorial Union ticket window from 8:30 a.m. to 3:30 p.m. Monday through Friday. Class size limited.

**Archaeological Symposium:** "Personal Art and Ornament in the Ancient World," 10 a.m. to 5 p.m.; 7:30 to 9 p.m., Museum of Art and Archaeology, Pickard Hall. Call 882-3591 to register. Symposium continues Oct. 24.

## 24 Sunday

**Drop-in Tour:** Museum of Art and Archaeology, general guided tour, 2 p.m.

**MSA Free Movie:** "The King and I," 7 and 9:30 p.m., Memorial Union Aud.

**International Night Dinner:** French, a la carte, 5 to 6:30 p.m., Memorial Union cafeteria. Prices vary.

**Student Ensemble Series:** Collegium Musicum, directed by Andrew Minor, 3 p.m., Fine Arts Recital Hall.

**MSA Craft Studio Workshop:** Pulp-casting, 2:30 to 6:30 p.m., 203 Brady Commons. \$10 fee. Make reservations at Memorial Union ticket window from 8:30 a.m. to 3:30 p.m. Monday through Friday; class size is limited.

**Archaeological Symposium:** "Personal Art and Ornament in the Ancient World," 10 a.m. to noon, Museum of Art and Archaeology, Pickard Hall. Call 882-3591 to register.

**Renaissance Music Program:** The Collegium Musicum, augmented by members of the Cameline Consort, 3 p.m., Fine Arts Building Recital Hall.

## 25 Monday

**Archaeological Institute of America Lecture:** "Some Reflections on Etruscan Mirrors," Richard Daniel DePuma, University of Iowa, 8 p.m., 106 Pickard.

**Ageing Seminar:** "Alcoholism Among Older Adults," Warren Peterson, director of Missouri Gerontology Institute, noon to 1:15 p.m., S16 Memorial Union.

**Microbiology Seminar:** "Dimorphism in Histoplasma Capsulatum," Gerald Medoff, department of internal medicine, Washington University/St. Louis, 1:40 p.m., M640 Medical Science Building.

**Biochemistry Seminar:** "Liposomes in Plant Genetic Engineering," Rob Fraley, department of biology, Washington University, 3:40 p.m., 322 Chemistry Building. Refreshments at 3:30 p.m.

**Women's Center:** "On Adoption," Althea Harris, local attorney, gives a legal and personal perspective on adoption, noon, 1 Gentry Hall.

## 26 Tuesday

**Neuroscience Seminar:** "Evaluations of Human Brain Function Utilizing the Macroelectrode and Microcomputer," Don York, associate professor of physiology, 7:30 p.m., 112 Lefevre.

**Faculty Recital Series:** Peter Kurau, horn, and Janice Wenger, piano, 8 p.m., Fine Arts Recital Hall.

**German-American Lecture:** "German-American Misunderstandings: Why Does Germany Act As She Does?" Paul

Noack, University of Munich, 8 p.m., 114 Arts and Science.

**Medical Seminar:** "The Alpha-Adrenergic System of Human Platelets: Molecular Basis for Regulation by Sodium and GTP," Lee E. Limbird, associate professor of pharmacology, Vanderbilt University School of Medicine, 4 p.m., M538 Medical Sciences Building.

**MSA Concert:** Pat Metheny, jazz artist, 8 p.m., Stephens Assembly Hall, tickets are 50 cents for MSA members; \$1 for public, available at Memorial Union ticket window.

**Latin America Colloquium:** "Politics and Development in Latin America: The Challenge of the '80s,'" Thomas G. Sanders, University Field Staff International Associate, 3:40 p.m., International Center Lounge, Gentry Hall.

**University Chapter of Professional Secretaries International:** Monthly meeting, 7 p.m., Western Sizzlin Steak House, 1710 I-70 Drive Southwest, dinner \$5.50. For reservations, call Pat Burbridge at 882-4701 by noon Oct. 25.

## 27 Wednesday

**Lunchtime Mini-Tour:** "A Ceiling for the Medici," a painting commissioned by Italy's most illustrious family, 12:25, Museum of Art and Archaeology.

**Humanities Lecture:** "Racine and Moliere," Donna Kuizenga, associate professor of French, 11:40 a.m. to 12:30 p.m., Ellis Aud.

**Management Development:** "Goals and Objectives: Hitting the Right Target," a six-hour course to help managers establish priorities and structure work toward them, 9 a.m. to noon and 1 p.m. to 4 p.m., Lewis Hall Conference Room. Call 882-4859 for registration information.

**Chamber Music Series:** Barry Tuckwell, French horn, 8 p.m., Jesse Aud. Public and faculty/staff \$8, students \$7.

**MSA Free Movie:** "The Fearless Vampire Killers," 7 and 9:30 p.m., Ellis Aud.

**University Club:** UMC Chancellor Barbara S. Uehling, guest speaker at monthly luncheon meeting, noon, Memorial Union, \$4.75 for lunch. Reservations necessary by Oct. 26. Call 882-3677.

**Ecological Sciences Seminars:** "Relative Abundances of Species on Islands," S.J. Wright, University of Iowa, 7:30 p.m., 112 Lefevre.

**Women's Center:** "Memories of a Newborn," Karen Kaupanger and Lou Swacker, new parents, will discuss their experiences with pregnancy and natural childbirth, 7 p.m., 1 Gentry Hall.

## 28 Thursday

**Women's Center:** "Spinning a Yarn: Stories for Children," Tina Hobbs, director of children's programming at KOPN, noon, basement Gentry.

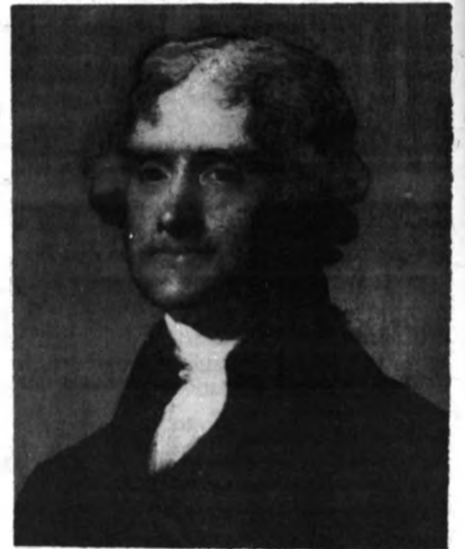
**MSA Movie:** "Attack of the Killer Tomatoes," 7 and 9:30 p.m., Jesse Aud. Special 25 cent admission.

**University Film Series:** "Montenegro," 7 and 9:30 p.m., Ellis Aud.

**Career Workshop:** "Your Job Interviews: Are You Ready?" 3:40 to 5 p.m., Career Planning and Placement Center, 110 Noyes.

**Business Journalism Lecture:** "Memo to the Press: Do They Still Hate You Out There?" Michael J. O'Neill, author and former editor of the New York Daily News, 10:40 a.m., Gannett Hall Aud.

**Student Rap Session:** Chancellor



The Museum of Art and Archaeology is exhibiting the rare "Edgehill" portrait of Thomas Jefferson through Oct. 31.

Painted by Gilbert Stuart in 1805, the work is the only portrait of Jefferson as president; the painting eventually furnished the government with an official likeness for postage stamps and the \$2 bill.

The portrait was purchased for \$1 million, with help from the Enid Crosby Kemper Foundation, for the National Portrait Gallery in Washington, D.C., and for the organization that operates Monticello, Jefferson's Virginia home.

The two institutions will display it alternately following its showing at the UMC museum in Pickard Hall. The museum is open noon to 5 p.m. Tuesday through Sunday.

The Columbia showing commemorates Jefferson's ties with higher education and with UMC.

Jefferson's original grave marker stands near the Chancellor's residence on the Francis Quadrangle.

Barbara Uehling, speaker, 4 p.m., Ellis Aud.

**University Assembly Lecture:** "Ethnicity--American Style," Alan Jabbour, director, American Folklife Center, 3:40 p.m., 114 Arts & Science.

**CPPC Workshops:** "Making Sense of Life's Transitions," a series designed to help participants anticipate and learn from various phases in life, 7 to 9 p.m., 110 Noyes. The workshops continue on Thursdays through Nov. 18. To register, call 882-6803.

## 29 Friday

**Forestry Seminar:** "Wood Waste Disposal - Potential and Problems," Mark Freeman, MPFA, Jefferson City, 2:40 p.m., 2-7 Agriculture.

**MSA Weekend Movie:** "Tattoo," 7 and 9:30 p.m., Jesse Aud. Tickets \$1 in advance, \$1.50 at the door.

**MSA Midnight Movie:** "The Grateful Dead," Jesse Aud. Tickets \$1.

**Astronomy Film and Telescope Viewing:** "4 RMS--Earth View" and "Who's Out There?" 7 p.m., 114 Physics, followed by telescope viewing at 8 p.m. on the roof.

**Student Ensemble Series:** Singings, directed by Ira Powell, 8 p.m., Fine Arts Recital Hall.

## Exhibits

**Museum of Art and Archaeology:** Mini-exhibit of ancient jewelry and other ornaments, noon to 5 p.m., Tuesday through Sunday through May 1, Pickard Hall.

University Libraries  
University of Missouri

### Digitization Information Page

Local identifier                      MizzouWeekly(print)

### Source information

Format                                      Newspaper  
Content type                                Text with images  
Source ID                                    Duplicate copies University Archives weeded out  
Notes

### Capture information

Date captured                              July-December, 2022  
Scanner manufacturer                    Plustek OpticBook  
Scanner model                              A300 Plus  
Scanning system software                Book Pavilion  
Optical resolution                         600 dpi  
Color settings                              8 bit grayscale for majority of pages;  
    24 bit color for color illustrations/portraits/photographs  
File types                                    tiff  
Notes

### Derivatives - Access copy

Compression                                Tiff: LZW compression  
Editing software                            Adobe Photoshop 2022  
Resolution                                    600 dpi  
Color    same as captured  
File types                                    pdf created from tiffs  
Notes    Images cropped, straightened, and brightened.