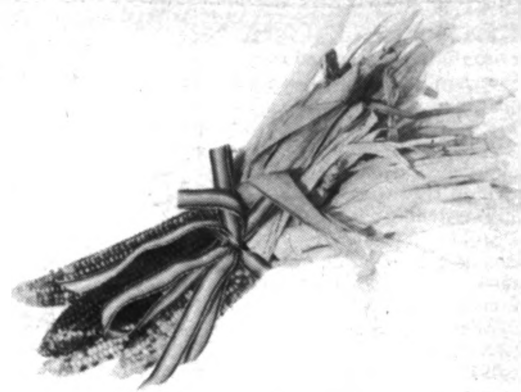


MIZZOU WEEKLY

University of Missouri-Columbia

September 7, 1984



Pick the fall semester calendar in this issue.

Staff Council offers proposals

Wide-ranging report calls for enhancing staff benefits.

At the Aug. 30 meeting, Staff Advisory Council members approved a report on recommendations for enhancing staff benefits. The proposals were discussed in depth at the July 26 meeting and a report containing the recommendations will be sent to Chancellor Barbara S. Uehling in the near future.

The recommendations cover the following areas: educational assistance, retirement, personal leave days and holidays. The report resulted from work by the council's staff benefits and development committee.

Specific recommendations follow:

- Add a provision to the educational assistance program

that would allow employees' dependents to use the program if the employee chose not to earn the up-to-6 college hours a semester at a reduced fee.

- Remove the 35-year maximum service ceiling that is currently used to calculate retirement benefits for individuals.

- Allow sick leave days to count toward retirement for all vested employees, including those who leave the University before they retire. This would serve as a reward for employees who do not abuse sick leave days, and encourage others to do the same.

- At retirement, allow unused days of sick leave to count as work days in calculation of retirement benefits.

- Change the policy on personal leave days so that employees could use them in hourly increments rather than entire days as now required.

- Add one floating holiday for the following reasons. A

personal day would not have to be used when Christmas fell mid-week. Other years the holiday could be used for either Martin Luther King's or Harry Truman's birthday. It would move the number of holidays received by University employees closer to the number received by other state employees.

The council also stressed that salaries are too low to keep well qualified staff from leaving the University. More than 2,600 UMC employees, more than half the staff members, make \$12,999 and below.

Uehling will meet with the council to discuss staff concerns at 1:15 p.m. on Sept. 12. All interested staff members are welcome to attend.

The council will hold elections later this fall. Five seats will be up for election. For more information on nominating someone, see the nomination form on Page 3 of this issue.

Proud heritage: Mule team struts its stuff Hilda and Louise are primed to bray about veterinary medicine's contributions to the livestock industry.

The two new College of Veterinary Medicine residents, the University's first mule team in more than 30 years, will represent the college and Mizzou in parades, competitions and other events, and provide wagon-drawn campus tours for distinguished visitors. The sorrel draft mules were purchased from 87-year-old Fayette, Mo., farmer Howard Sartain with a corporate gift from Hill's Pet Products.

Other contributions include a restored antique wagon from the late Louise Mathews of Creve Coeur, Mo., and a harness from Elsie Roth of Fenton, Mo. Volunteer veterinary students, faculty and staff will groom and exercise the animals.

The team will serve as a reminder of Missouri's agricultural heritage and the college's service to the state. "Like Missouri's veterinary profession, a faithful, hard-working, ruggedly individualistic group of dedicated public servants, the mule's unending contributions need public acknowledgement," says veterinary medicine Dean Robert Kahrs.

Two Mizzou researchers are doing their part by documenting the mule's heritage in a project called "Missouri Mules, Then and Now." Duane Dailey, professor of extension education, and Melvin Bradley, professor of animal science and a horse and mule extension specialist, have logged thousands of miles collecting reams of facts and taking nearly 9,000 photos throughout the state. The completed research will be used in publications, displays and slideshows.

Mule lore also is preserved in the Mis-



Duane Dailey photo

Hilda and Louise take veterinary medicine Dean Robert Kahrs and guests for a spin around campus.

souri Mule Project of the Missouri Cultural Heritage Center. Research Associate Gil Porter, an English professor, has been collecting tales, ballads and jokes about the work animals for more than a year. The ul-

timite mission: describe and preserve the Missouri mule's agricultural contributions to redeem it from the plight of that ancient adage. "A mule has neither pride of ancestry nor hope of posterity."

George accepts St. Olaf post

Interim President Mel George has been selected president of St. Olaf College, a liberal arts school in Northfield, Minn. George will become the eighth president in the institution's 110-year history in March, allowing for a transition between his administration here and that of C. Peter Magrath, who earlier this summer was selected to head the University beginning Jan. 1.

St. Olaf has a student body of about 3,000 and is affiliated with the Lutheran Church, of which George is a member.

"The presidency of St. Olaf College is an exciting personal and professional opportunity for me but I leave the University of Missouri with many good memories and not a few regrets at the thought of saying goodbye to so many friends with whom I have worked closely for nearly 20 years," George said. During his career with the University, George has been a professor and associate chairman in the mathematics department, associate dean of the Graduate School and vice president for academic affairs.

George said he regrets that in accepting the new position he gives up the opportunity to again work closely with Magrath. The two were associates at the University of Nebraska during the early 1970s.

"I was looking forward to renewing that association, but it's very reassuring to know that the future of the University of Missouri is in such able hands with Peter Magrath as president."

Magrath attended a news conference in Minnesota at which George's plans were announced.

"I am delighted for Mel George and St. Olaf College but I feel a real sense of personal sadness and loss that he will no longer be contributing directly to the University of Missouri — which he has done so well for many years. He will leave Missouri with the applause and good wishes of countless individuals."

REGISTER NOW FOR PIGSKIN PRESCHOOL

Registration is being accepted for Pigskin Preschool, child care provided on campus during home football games.

Students and faculty in the child and family development department will direct activities, field trips, outdoor games and storytelling for children ages six weeks to 10 years.

Programs open at noon on home game Saturdays in Stanley Hall. Fees, at \$8 per session, should be paid in advance. For those paying for all seven sessions in advance, the fee is reduced to \$48.

For reservations, call Sherri Griffin, preschool coordinator, at 882-4035. The preschool is limited to 70 children per session.



FUN FOR FACULTY FOOTBALL FANS

The new Mizzou Faculty Football Club will offer fans another chance to catch the Tiger feeling this fall.

Beginning Sept. 11, faculty fans may join the team and coaches for lunch at noon every Tuesday during the season in the athletic dining hall, located in Clark Hall. Cost is \$3.

The first meeting will be in conjunction with the University Club.

For reservations, call 882-6501, extension 228, by Monday each week. For more information, contact Lynn Lashbrook, assistant athletic director, 319 Hearnest Bldg., 882-6501, extension 215.



Sign painter Billy Sippel of Campus Facilities displays the football he painted for the Athletic Department to give to President Reagan at the Missouri State Fair.

Handbook updated; elective offices filled

The new faculty handbook is in print, Bob Stewart reported to Faculty Council.

At the Aug. 30 meeting, the chairman of the council's communications committee discussed the handbook, updated for the first time since 1977. It covers the University system, UMC, academic regulations, academic tenure regulations, academic grievance procedures, graduate faculty, UMC

bylaws, financial exigency, program discontinuance, leaves of absence and 1984 copyright regulations for University-sponsored educational materials.

Department chairmen will receive handbooks for each faculty member; the mailing is expected to be completed in mid-Septem-

ber. Extra copies must be obtained from the provost's office.

In other business, the council filled elective offices. Committee chairmen are John Bauman, academic and faculty affairs; Bina Gupta, academic freedom and grievance; Bob Stewart, communications; Carl Settergren, fiscal affairs; Don Anderson, special projects; and Rich Oliver, student affairs.

Representatives to Intercampus Faculty Council are Marie Vorbeck and Dick Dowdy. Council Chairman Truman Storvick, elected in May, also is a member of IFC. Other Faculty Council officers are Dowdy, vice chairman; Margaret Flynn, recorder; and James Frisby, parliamentarian.

Al Corley will serve as faculty representa-

tive to Board of Curators' meetings.

Also at the meeting, council members received committee reports summarizing 1983-84 activities. The academic and faculty affairs committee urged completion this year of a proposal for a Curator Graduate Scholars program, which would waive incidental fees and out-of-state tuition for eligible students.

A plan to survey the faculty about their microcomputing needs received favorable response from the council. Chris Lucas reported that the faculty development advisory committee, in conjunction with an ad hoc campus computing committee, had proposed the questionnaire.

The council's next meeting will be at 3:40 p.m. Sept. 20 in S110 Memorial Union.

Give yourself some credit

Employee development seminars offered jointly by UMC's Training and Development and UMCA's Human Resource Development qualify participants to earn continuing education units, which record participation in non-credit courses.

While the CEUs are not transferable for university credit hours, they can be helpful for documenting the learning of new skills or refreshing of old ones. They can be especially valuable for re-licensing or certification, says Blake Danuser, manager of Human Resource Development. "CEUs are an indication that the individual has taken the time to learn more about that particular area."

A transcript of each employee's CEUs and participation in employee development seminars is kept by Human Resource Development and recorded in personnel files. Transcripts of seminars completed also are available to participants.

Each hour of attendance in employee development seminars is worth one-tenth of a CEU. Seminars are offered for both office and management/professional employees. Topics include organization, supervision, communication, personal improvement and environment. All seminar topics are interrelated.

For more information on this fall's employee development seminars and earning CEUs, call 882-4859.



SCHOLARSHIPS: Three scholarship funds were established at UMC recently. Income from the Dr. James M. Baker Memorial Scholarship Fund, established by a \$12,980 endowment, will be given annually to three student athletic trainers in the Intercollegiate Athletic department. Baker, a Mizzou football player in the 1920s, was the Tigers' team physician from 1935 to 1978.

The Dick Barnett Scholarship Fund will provide scholarships to Mizzou football or basketball players. The fund will be established with income of \$4,516.33 from a trust established by the late S. Richard Barnett of Columbia. Future income from the trust also will be presented to the University.

The Philip B. Carpenter Memorial Scholarship Fund has been established in support of the School of Journalism. The fund provides a \$2,500 scholarship in memory of Philip B. Carpenter, a 1936 graduate of the school. Dean James D. Atwater will select recipients and determine the number and amount of awards, based on guidelines established by the UMC Office of Financial Aids.

LOAN FUND: A loan fund for undergraduate students in the College of Agriculture has been established by a \$5,000 endowment from Jewett M. Fulkerson, BS Ag '36, and Carolyn E. Fulkerson of Liberty, Mo.

VIDEO GIFT: Monsanto Co. has donated

video equipment and accessories to the School of Journalism for use in teaching advertising courses. Students who are learning to prepare presentations for advertising and public relations campaigns are intended to use the gift of two video recorders, two cameras, one television monitor and assorted accessories.

CAR POOL: Laurinda Jett seeks car-pool riders and drivers who work 7:30 a.m. to 4 p.m. and live in Fulton. Call 882-6421.

DUES: Faculty, librarians, administrative officers and administrative staff are eligible to join the University Club, which provides social, educational and recreational activities while promoting the University.

Annual dues are \$5 and should be sent to treasurer Lynn Lashbrook, Box 677, Hearnest Bldg.

The club holds monthly luncheon meetings during the academic year. Football Coach Warren Powers will speak at the first meeting, to be held at noon Sept. 11 in the athletic dining hall, located in Clark Hall. Call 882-6501 for reservations for the \$3 luncheon.

The group will meet in Memorial Union Oct. 15, Nov. 7 and Dec. 11.

REQUIREMENTS: Medical school faculty have approved new admission requirements to improve students' skills in writing and biology. The changes are effective fall 1986.

The old requirements called for two semesters of English composition or literature. Under the new system, an entering medical student must have two semesters of English composition, with at least one course beyond the freshman level.

In the past, students needed three semesters of biology—one general and two advanced, all with labs. Now, students must have four semesters of biology, including two general and two advanced, but with only two labs.

mandatory student health fee," Moore says. "In fact, we're one of only two institutions in the Big Eight without such a fee."

Eventually, Moore hopes that the program will be self-supporting. Five years ago, Student Health Services was completely funded by University general operating funds.

The \$240,000, which had been allocated from the University's general operating funds to Student Health Services, will be returned to the general fund.

Fall semester count down

As expected, Mizzou's fall semester, opening-day enrollment of 22,034 declined by some three percent compared to last year.

"For the third year, we have a smaller freshman class," says Gary Smith, director of admissions and registrar. "This is due primarily to the shrinking size of the primary pool of students, which is high-school students in the state." The trend is projected to continue for another 10 years, he adds, and then reverse.

Smith estimates that the final 1984 fall enrollment figure will range from 23,200 to 23,300, a drop of 800 students compared to last fall's final enrollment figure.



Vol. 6 No. 2

A publication of the University of Missouri-Columbia faculty and staff, published every Friday during the academic year and twice a month during the summer by Publications and Alumni Communication, a department of Development, University and Alumni Relations Division, 1100 University Place, 875-7132. News deadline is noon Friday the week before publication. Annual subscriptions are available to retirees for \$10. Advisory board: Gerald Brouder, Myrna Bruning, Carol Bruce, Brooke Cameron, Mike Chippendale, Joan Hansen, Jeanette Jefferson, Marjorie Marberry, Mary Miller, Barbara Olson Smith, Bob Stewart, Harry Stoeckle and Donna Turner.

Editor: Karen Worley
Assistant editor: Carol Again
Photo editor: Larry Boehm
Staff writer: Julie Wilson Barbeau

Student Health Services saves \$240,000

A savings of \$240,000 in general operating funds will be realized in the 1984-85 budget of the Student Health Services, says Norman Moore, vice chancellor for Student, Personnel and Auxiliary Services.

The \$240,000 will be made up through income from user fees and from funds carried over from a voluntary student health plan instituted last year, Moore says.

The reduction lowers University support for the program from 49 percent to 28 percent, Moore says. Student Health Services has an annual budget of \$1.1 million.

"We're pleased that we've been able to reduce the University's contribution to Student Health Services without instituting a

MIZZOU EMPLOYEES CREDIT UNION

721 Locust St. Columbia

7:30-5:30 M-F Closed 9-10 a.m. Tuesday

874-1477

Each member account insured to \$100,000



by Administrator, National Credit Union Administration

"Highest rates paid on your passbook savings"

MIZZOU PEOPLE

Associate Dean **WILLIAM H. PFANDER** has been named to the Committee of Nine by U.S. Department of Agriculture Secretary John R. Block. The committee advises Block and USDA's Cooperative State Research Service's administrator on matters relating to regional research.

SANDRA GAUTT, associate professor of special education, will be an American Council on Education fellow at the University of Kansas this school year.

Home economics Dean **BEA LITHERLAND** was named as one of 75 outstanding leaders in the field at the 75th anniversary of the American Home Economics Association in June. The group chose **YVONNE MATTHEWS**, a PhD candidate in family economics and management, as one of 75 "New Faces to Watch," a program that honors young professionals who have shown potential as leaders. Matthews, who coordinates the college's minority student programs, received the association's Flemmie P. Kittrell Fellowship for Minorities.

BARBRA A.B. HORRELL, continuing education coordinator and a senior in the College of Education, has been named Minority Network Trainer of the Year by the American Society for Training and Development, a national educational association in human resource development.

LEE J. CARY, professor of community development, has received the distinguished service award from the Community Development Society, an international professional organization.

JAN THORNTON, executive staff assistant I in the College of Education dean's office, and **MAUREEN BREESE**, secre-

tary in educational administration, earned University credit this summer for their participation in an Egyptian tour, "The Pyramids and the Sphinx."

DOROTHY WATSON, professor of education, **MARGARET HENRICH**s and **PAUL CROWLEY**, doctoral candidates, and Patricia Jenkins, assistant director of special education in the Columbia Public Schools, presented a seminar on educational semiotics and literacy at the tenth World Congress on Reading in Hong Kong in August.

KAREN WORLEY, assistant director of alumni communication, received third place in the National Federation of Press Women communications contest for Missouri Medical Review, an alumni magazine she edits for the School of Medicine.

GERALD BARRIER, professor of history, has received a \$40,000 Ford Foundation grant to collect books about India and travel to that country to present the collection to Prime Minister Indira Gandhi.

RUTH ANN KROTH, assistant professor of nursing, attended a Sino-American Clinical Study for Nurse Educators in the People's Republic of China May 25 to June 7.

GERALD T. PERKOFF, professor of family and community medicine, has received a \$1.3 million fellowship from the Robert Wood Johnson Foundation to continue the foundation's Family Practice Faculty Fellowships Program at UMC. The program, one of five in the nation, helps prepare family physicians for academic careers.

IRMA FLEEMAN, assistant professor of nursing, is winner of the first Open Door Award for excellence in advising. The Missouri Students Association senate's academic affairs committee presented the award in May.

CLIFTON SMITH, assistant professor of practical arts and vocational/technical education, was elected to three-year terms

as vice president of the American Vocational Association and as president of the association's marketing and distributive education division.

WILLIAM CONNOR, general manager of the University Book Store, moderated an educational session called "High Tech Sales: Books, Courseware and Magazines" at the annual meeting and trade fair of the National Association of College Stores in April.

WILLIAM A. BERRY, professor of art, exhibited 21 colored-pencil drawings that explore the pictorial potential of solid geometrical form at the College of William and Mary in Williamsburg, Va., in June.

The American Board of Examiners in Professional Psychology, of which **PAUL KING**, professor of education and counseling psychology, is president, has moved its national headquarters to Columbia. The office is located in the Eastgate Building.

DON ALGER, associate director of the Research Reactor and associate professor of nuclear engineering, and **JAMES R. VOGT**, program director for nuclear analysis at the reactor and professor of nuclear engineering, have been elected fellows of the American Nuclear Society. Vogt also was elected for inclusion in the 43rd edition of "Who's Who in America."

LINDA BENEDICT, state extension information specialist, is winner of a national award for radio broadcasting presented by the Agricultural Communicators in Education. Her weekly news program, "Money Talks," was judged best among 18 entries.

WAYNE DECKER, professor of atmospheric science, and Clarence Sakamoto and Louis Steyaert of the U.S. Commerce Department, conducted a training session on agroclimatic techniques in Pattaya, Thailand. **ATANAS TODOROV** and **RAO ACHUTUNI**, research associates in the atmospheric science department, also participated.

Medical dean outlines future plans

William D. Bradshaw, appointed to a two-year term as dean of the School of Medicine, outlined his goals for the school before some 200 faculty, staff and students at a meeting last week.

He says he will fill the posts of fiscal officer, associate dean for student affairs and associate dean for academic affairs.

He'll also initiate a study of the school's curriculum. "There's a trend nationally to get away from so much memorization of facts present in the early years of medical education."

Bradshaw emphasizes the need for fund development, especially by working with special interest groups like those supporting research in cystic fibrosis, cancer, heart disease and diabetes.

And research, he says, needs to be increased. "I would like to see all faculty bringing in some research funds, not just a few people bringing in a lot of money. Through research, we acquire new knowledge to share with each other and our students."

Bradshaw has been interim dean since May 1, 1983. A national search for a permanent dean will be re-opened next spring, with an appointment to be made at the end of 1985-1986.

Bradshaw came to UMC in 1976 as director of Continuing Education and Extension for Health Professions and as an associate professor of family and community medicine.

He received a BS Med degree from UMC in 1952 and earned his MD from the University of Kansas.

Q&A

Q. Are all the remaining houses on Kuhlman Court going to be torn down because of the Ellis Library expansion? If so, where will the people and offices using those buildings be relocated?

A. All the buildings on Kuhlman Court must be vacated by Oct. 1 in order to make way for the Ellis Library and the Brady Commons expansions. According to Ted Tarkow, associate dean of arts and science, units affected in that college have or will change locations as follows: The Honors College and some history and English faculty members will be relocated to Gentry Hall. History teaching assistants will have offices at 400 Hitt St. Philosophy TAs will be moved to the Math Annex, German TAs to General Classroom Building and Romance language TAs to Lewis Hall.

Also affected by the building demolitions are the *Missouri Law Review*, which will move to the Education Building, and cooperative extension offices for art and art history, now located in 210 and 212 Smith Hall at 1206 Walnut St. As of press time, Wilderness Adventures still was searching for a new home.

Q. Why have black stripes been put on the left side of the University travel vouchers and IDs? This cuts down on the space that's already too small for descriptions and destinations. We secretaries will be waiting to hear.

A. "I know the bars cut down on space, but it can't be helped," says Mary Hemminger, forms designer/producer at University Printing Services. Bar codes now are printed on vouchers and other forms that need to be saved on microfilm: The two narrow and two wide black stripes save both time and money by automatically activating microfilm cameras. It works similar to bar codes used in grocery stores, she

says. The bar codes have been added to systemwide forms during the past two years. It's more efficient to store microfilm than paper forms, Hemminger adds.

Q. I have recently received two different chain letters through campus mail. Others in my department also have received similar letters. Isn't this against University policy?

A. Using campus mail for anything other than official University business is definitely against University policy, says Jim Southern, manager of Campus Mail Service. "We attempt to find the source of any non-University mail when it is called to our attention," he says. Departments can help by stamping or writing a return address on each piece of mail.

Q. Why does the salary year run from Sept. 1 to Aug. 31 and the fiscal year from July 1 to June 30? It was at one time the same.

A. About 10 years ago, the starting date of the salary year was changed from July 1 to Sept. 1 to better coincide with the academic year, says Kent Shelton, UMCA assistant vice president of Financial Services. When the change was made, most faculty members had contracts starting Sept. 1, but staff salary adjustments were made on July 1. The new date put faculty and staff salary years on the same calendar. The university's budget year has remained July 1 to June 30 to reflect the state's schedule, Shelton says.

Send your questions about campus matters to *Mizzou Weekly*, 1100 University Place. You must include your name and telephone number so we can reach you if necessary. Your name will not be published.

FOR SALE

Permits for cutting firewood
on Ashland Wildlife Area.
\$10/4 cords
Call 657-9028

Nominate staff members for Staff Advisory Council

Staff Advisory Council is seeking nominations for its upcoming fall election when five new members will be elected. Members of the Staff Council serve three-year terms and act as an advisory board for the chancellor.

The council is made up of 16 members, four from each of the following job classifications: administrative/professional, crafts/maintenance, secretarial/clerical and technical/paraprofessional.

To nominate someone, fill out the

form below and return it by noon Sept. 20 to Darlene Schroeder, 323 Jesse Hall.

A slate of candidates will be prepared from the list of nominees. Ballots will be mailed to all eligible staff in October. Election results will be announced in November.

For more information about Staff Advisory Council, call one of the following members: Jim Bonuchi, 882-7111; Rosemary Crane, 882-3625; Pat Ives, 882-4678; Harri Palmer, 882-3638; or Wilfred Tolson, 882-8715.

Name of nominee _____

Job title _____

Campus address _____

Campus phone _____

Job classification (if known):

Administrative/Professional

Crafts/Maintenance

Secretarial/Clerical

Technical/Paraprofessional

The above nominee will make a good Staff Advisory Council member because _____



JOBS

The following staff openings were approved and posted Monday, Sept. 3, and may be filled at any time after meeting the required posting period. For more information or to apply for a job, contact the Personnel Office, 600 University Place, at 882-4221. Salary codes follow some listings in parentheses.

PROFESSIONAL

Assistant director, Residential Life (Greek Life), deadline Oct. 1.
Career planning and placement adviser, Educational Placement.
Industrial hygienist, Environmental Health.
Information specialist, News Services, Publications.
Information support specialist, Administrative Information Services-UMca (2).
Manager, energy engineering, Campus Facilities.
Manager, power plant engineering project, Campus Facilities.
Senior accountant, Accounting Services.
Senior continuing education coordinator, Continuing Medical Education.
Senior information specialist, University Relations-UMca.
Training associate, UED-Recreation and Park Administration, located in St. Joseph, Mo.

RESEARCH/SERVICE

Assistant supervisor, custodial services, Campus Facilities (3).
Athletic equipment technician (M-57), Intercollegiate Athletics (3).
Audio/TV production technician (M-58), Academic Support Center.
Broadcast engineer I (M-59), KOMU-TV.
Engineering technician (M-61), Campus Facilities.
Industrial chemist, Environmental Health.
Laboratory assistant (M-53), Obstetrics and Gynecology.
Research/laboratory technician (M-56), Anatomy, Research Reactor-UMca.
Research specialist, Agronomy, Animal Science-poultry (2), Biochemistry, Child Health (2), Plant Pathology, Research Reactor-UMca.
Senior animal health technician, Veterinary Medicine and Surgery-Equine Center.
Senior audio/TV production technician (M-60), Academic Support Center.
Senior research engineering technician (M-63), Mechanical and Aerospace Engineering.
Senior research/laboratory technician (M-59), Biological Sciences (2), Microbiology, Pharmacology, UED-Soils Testing Laboratory.
Storekeeper (M-57), Purchasing-Military.

SECRETARIAL

Administrative assistant (M-59), Administrative Information Systems-UMca, News Services.
Administrative secretary (M-59), Budget Development and Planning Services-UMca, UED-Continuing Professional Education/COE.
Chief accounting clerk (M-57), Medicine Dean's Office.
Chief clerk (M-57), Veterinary Medical Diagnostic Laboratory.
Composition coder (M-55), University Printing Services-UMca.
Data entry operator II (M-55), Information Science.
Library assistant I (M-57), Ellis Library-Cataloging, position ends Sept. 30, 1985.
Library assistant II (M-59), Ellis Library.
Library clerk II (M-53), Health Services Library-Serials.
Secretary (M-55), Civil Engineering, Computing Services, Dairy Science, Development Fund (2), Economics, Family and Community Medicine (medical transcriptionist), Fertilizer Control, Mechanical and Aerospace Engineering, Medicine-Cardiology, Medicine-General Medicine/Infectious Diseases, Medicine-Nephrology, School of Nursing, Sociology, Student Recruitment/Admissions/Records, Surgery-Cardiothoracic, UED-Food and Nutrition, University Printing Services-UMca, Vice Chancellor for Administrative Services, Women Studies Program.
Senior clerk (M-55), UED-Center for Independent Study.
Senior secretary (M-57), Memorial Union, Missouri School Boards Association, Special Education (50-75 percent FTE).
Word processing operator II (M-55), Veterinary Pathology.

TECHNICAL

Computer programmer/analyst I, Medicine-Immunology/Rheumatology.

Computerprogrammer/analyst II, Library Systems-UMca.
Graphic artist II (M-58), Academic Support Center.
Manager, technical support and computing activities, Computing Services-UMca.
CLERICAL
Clerk typist (M-51), Cashiers (85 percent FTE, hours 8 a.m.-3 p.m.).
Senior clerk typist (M-54), Agronomy.
Senior sales clerk (M-55), Brady Commons, hours 3-11 p.m.
Secretary-stenographer (M-54), Veterinary Microbiology.
Senior stenographer (M-54), Geology, Law (100 percent FTE), Law (75 percent FTE, hours 8 a.m.-3 p.m.), School of Accountancy.
Switchboard operator (M-53), Telecommunications, hours 9 a.m.-6 p.m.

PART-TIME/TEMPORARY

Administrative associate I, Campus Facilities, 20 hours a week, permanent.
Clerk (M-51), Student Health Services, 25 hours a week, permanent.
Clerk typist (M-51), Plant Pathology, 20 hours a week, permanent.
Clerk typist II (M-53), Center for Aging Study, 20 hours a week, permanent; Forestry, Fisheries and Wildlife, 20 hours a week, permanent.
Clinical specialist/nursing, Child Health, 20 hours a week, permanent.
Data entry operator I (M-53), Research and Patent Development, 25 hours a week, permanent.
Laboratory assistant (M-53), Dairy Science, full time, temporary until March.
Registered respiratory therapist, Respiratory

Therapy, 20 hours a week, permanent.
Research/laboratory technician (M-56), Biochemistry, full time, temporary until February; Biological Sciences, 20 hours a week, permanent.
Secretary (M-55), Accounting Services, full time, temporary until November; Biochemistry, 20 hours a week, permanent; Center for Research in Social Behavior, hours 2-5 p.m., permanent; Family and Community Medicine, 16 hours a week, permanent; Human Nutrition, Foods and Food Systems Management, 28 hours a week, permanent; Missouri Institute of Executive Development, hours 8 a.m.-noon, permanent, effective in October.
Senior research/laboratory technician (M-59), Biochemistry, full time, temporary until January.

Senior stenographer (M-54), College of Business and Public Administration-Management, hours 1-5 p.m., permanent.
Student assistant-technical, Telecommunications, hours 5-10 p.m. weekdays, 8 a.m.-noon Saturday, permanent.

The following job openings were listed by the UMC Hospital and Clinics Personnel Department Sept. 3 and may be filled at any time after meeting the required posting period. For more information, call 882-8186.

ADMINISTRATIVE/PROFESSIONAL

Assistant division director, Professional Services, deadline Sept. 28.
Assistant manager, Medical Records.
Learning skills specialist, Speech Pathology.
Manager, Infection Control, Plant Engineering.
Social worker, Social Services.

Speech pathologist and clinical instructor, Physical Medicine and Rehabilitation.
Training/development coordinator, Education and Training.

CLERICAL

Administrative secretary, Director's Office.
Admissions clerk, Admissions (2).
Clerk II, Medical Records (University personnel only).
Data entry operator, Patient Accounts.
Hospital unit clerk, Nursing (2).
Medical records transcriptionist, Medical Records.
Secretary, Nursing Service.
Senior accounting clerk, University Physicians (University personnel only) (2).
Senior Receptionist, University Physicians (2).
Senior secretary, Assistant Director Payroll/Auxiliary Administrative Services, Management Analysis, Nursing.

NURSING

882-8701
Administrative nurse II, Nursing.
Clinical nurse I, Nursing (3).
Education nurse I, Nursing (3).
Nurse anesthetist, Anesthesiology (2).
Staff nurse, Nursing (14).

TECHNICAL

Biomedical equipment technician, Clinical Engineering.
Biomedical radiological technologist, Clinical Engineering.
Computer project manager, Computer Services.
Pharmacy technician, Pharmacy.
Physical therapist, Physical Therapy (2).
Senior systems programmer, Computer Services.
Supervisor, radiation oncology, Radiology.



“We never thought Eric would be playing ball.”

“Eric's heart condition had kept him on the sidelines. He was one of those eight in a thousand children born with a congenital heart defect. Exercise was dangerous because his heart valve was extremely narrow. We thought he'd have to undergo open heart surgery; that used to be the only way to correct his problem. But we took him to the teaching hospital where a new procedure had been developed. The doctor at University Hospital and Clinics uses a catheter with an inflatable balloon to widen the heart valve. No surgery, no scar, and Eric was hospitalized just one night. Now he's playing ball!”

University of Missouri-Columbia

**Hospital
& Clinics**

Caring for your life
with The Staff for Life



Don't shuck this Amazing arrangement of fall events

This harvest of events is free and open to public unless otherwise indicated.

September 7, 1984
University of Missouri-Columbia

MSA CRAFT STUDIO: Weaving, stained glass and batik will be taught from 6:30-9 p.m. for the next five Wednesdays in 203 Brady Commons. Cost for each class is \$21 for students, \$26 for others. Black and white photo, session III, will be taught today in 203 Brady Commons. Color printing will be taught from 6:30-8:30 p.m. for the next three Wednesdays in 203 Brady Commons. Cost is \$25 for students, \$30 for others. Call 882-2889.

WOMEN'S CENTER: "Women's Voices: Weaving Words" will start at 7 p.m. in 1 Gentry Hall. Local women artists will share their poetry.

MSA FILM: "The Unsinkable Molly Brown" will be shown at 7 and 9:30 p.m. in Ellis Library Aud.

13 September

BOARD OF CURATORS will meet in Columbia today and Sept. 14.

GIST SEMINAR ON INTERNATIONAL AFFAIRS: Paul Wallace, professor of political science, will present "The Sikh Problem: Religion and Politics in India" from noon-1:15 p.m. in S16 Memorial Union.

STAFF ADVISORY COUNCIL will meet at 1:15 p.m. in S204 Memorial Union.

CAREER PLANNING AND PLACEMENT CENTER: "Your Job Interviews: Are You Ready?" will be presented from 3:40-5 p.m. in 110 Noyes Bldg. Call 882-6803.

MSA CRAFT STUDIO: Papermaking and calligraphy will be taught from 6:30-9 p.m. for the next five Thursdays in 203 Brady Commons. Cost for each class is \$21 for students, \$26 for others. Call 882-2889.

WOMEN'S CENTER: "Women's Voices: Women's Music Through Community Radio" will be presented at 7 p.m. in 1 Gentry Hall by the Crystal Set Feminists of KOPN.

UNIVERSITY FILM: "Every Man for Himself and God Against All" will be shown at 8 p.m. in Ellis Library Aud. Cost is \$1.

14 September

AGRICULTURE FIELD DAY: Southwest Missouri Center Field Day will be held from 8 a.m.-2 p.m. four miles west of Mt. Vernon, Mo., on Highway H. Special tour topics include honey production, computers, home economics, weed identification and lagoon pumping.

AIR FORCE ROTC: Air Force Weekend will be held today through Sunday to celebrate the 37th anniversary of the U.S. Air Force. Col. Norman McDaniel, a seven-year prisoner of war in Vietnam, will lead a history and political science seminar on the Vietnam War and POW/MIA issue from 10:40-11:40 a.m. in 210 General Classroom Bldg. He will give a minority presentation from 2-3:30 p.m. at the Black Culture Center.

MSA FILM: "The Right Stuff" will be shown at 6 and 9:30 p.m. in Jesse Aud. Cost: \$1.50.

GUEST ARTIST: Pianist Gary Wolf will perform at 8 p.m. in the Fine Arts Recital Hall.

WOMEN'S CROSS COUNTRY: Team will play in the Missouri Invitational at the A.L. Gustin Golf Course. Cost: \$2 faculty/staff, \$1 students.

15 September

AUTOGRAPHING: Gary Larson, creator of "The Far Side," will autograph copies of his new book, *Beyond the Far Side*, from 10 a.m.-noon at the University Book Store in Brady Commons.

FOOTBALL: Team will play Wisconsin at 11:34 a.m. Cost: \$12.50 reserved seat, \$7.50 general admission.

MSA FILM: "Empire Strikes Back" will be shown at Jesse Aud. Cost: \$1.50, 7 and 9:30 p.m.; \$1, midnight.

AIR FORCE ROTC: A dinner at the Campus Inn Columbia will start at 7:30 p.m. Norman McDaniel will speak. Cost is \$13.50. Call 882-7621.

16 September

AIR FORCE ROTC: U.S. Air Force Col. Norman McDaniel will lead a POW/MIA chapel service at 9 a.m. in A.P. Greene Chapel.

Joel Saleason photo

7 September

AGRICULTURE FIELD DAY: Delta Center Field Day will be held today in Portageville, Mo.

MSA FILM: "Police Academy" will be shown in Jesse Aud. Cost: \$1.50, 7 and 9:30 p.m.; \$1, midnight.

FACULTY RECITAL: John McLeod, assistant professor of music, will give a violin recital at 8 p.m. in the Fine Arts Recital Hall. He will be assisted on the piano by his father, Dwight McLeod, piano teacher and librarian at the North Carolina School of Arts.

8 September

MSA FILM: "Greystoke and Midnight" will be shown in Jesse Aud. Cost: \$1.50, 7 and 9:30 p.m.; \$1, midnight.

9 September

MSA FILM: "I Am a Fugitive From a Chain Gang" and "The Black Pirate" will be shown at 8 p.m. in Memorial Union Aud. Cost: 25 cents.

10 September

EMPLOYEE DEVELOPMENT SEMINAR: "Beginning Supervision" will be taught by Dean Baxter, staff development specialist, from 1-3 p.m. today and Sept. 12, 14, 17, 19 and 21 in the Training and Development Conference Room, lower level of Lewis Hall. Call 882-4859.

MSA CRAFT STUDIO: Beginning woodworking and basket making will be taught from 6:30-9:00 p.m. for the next five Mondays in 203 Brady Commons. Cost for each class is \$21 for students, \$26 for others. Black and white photo, session I, will be taught today in 203 Brady Commons. Cost is \$25 for students, \$30 for others. Call 882-2889.

MSA FILM: "Trading Places" will be shown at 8 p.m. on Lowry Mall.

11 September

AGRICULTURE FIELD DAY: Hundley-Whaley Farm Day will be held today in Albany, Mo.

FACULTY LUNCHEON will be held from 11:30 a.m.-1:15 p.m. in Memorial Union's Scott Joplin-Blind Boone Room (N222 and N223). Cost: \$4.50. Call 882-7405 by 5 p.m. Sept. 10.

UNIVERSITY CLUB: The first luncheon of the year will be held at noon in the Clark Hall Athletic Dining Hall. Warren Powers will speak on "1984 Football at UMC." For reservations call Lynn Lashbrook at 882-6501.

WOMEN'S CENTER: "Women's Voices: Missouri Women Preachers" will be presented by Elaine Lawless, assistant professor of English and folklore, at noon in 1 Gentry Hall.

COMPUTER CLASS: "Fundamentals of Lotus 1-2-3 (Novice)" will be taught from 1-3 p.m. today and Sept. 13, 18 and 20 at Computer U, 2 Brady Commons. Cost is \$80 for faculty/staff. "Unlock d-Base II (Advanced)" will be taught from 3:30-5:30 p.m. today and Sept. 13, 18 and 20. Cost is \$80 for faculty/staff. Call 882-2133.

CAREER PLANNING AND PLACEMENT CENTER: Orientation to CPPC services will be held from 4-5 p.m. in 110 Noyes Bldg. Call 882-6803.

MSA CRAFT STUDIO: Pot throwing will be taught for the next five Tuesdays from 6:30-8:30 p.m. in 203 Brady Commons. Spinning will be taught for the next five Tuesdays from 6:30-9 p.m. in 203 Brady

Commons. Cost for each class is \$21 for students, \$26 for others. Black and white photo, session II, will be taught today in 203 Brady Commons. Cost is \$25 for students, \$30 for others. Call 882-2889.

BLACK CULTURE CENTER: "How to Study," a self-help workshop, will start at 7 p.m., at 823 Virginia Ave.

CAREER PLANNING AND PLACEMENT CENTER: "Career Pathing: Assessing Yourself for a Change" will be held from 7-9 p.m. in 110 Noyes Bldg. Call 882-6803.

MSA FILM: "Sundays and Cybele" will be shown at 8 p.m. in Ellis Library Aud.

12 September

PHYSIOLOGY: "Cardiac Effects of Adenosine" will be discussed by Robert M. Berne of the Department of Physiology at the University of Virginia at 11:40 a.m. in M401 Medical Science Bldg.

FACULTY LUNCHEON will be held from 11:30 a.m.-1:15 p.m. in the Memorial Union's Walt Disney Room (N208). Cost: \$4.50. Call 882-7405 by 5 p.m. Sept. 11.

BLACK STUDIES: "The Black Presence in the Predominantly White Church" will be discussed by Rhymes Moncure, associate pastor of Missouri United Methodist Church, from 11:30 a.m.-1 p.m. in S8 Memorial Union. Bring a sack lunch; beverages will be provided.

MUSEUM OF ART AND ARCHAEOLOGY: A gallery talk by David Butler on "Love, Sacred and Profane" will start at 12:25 p.m. in the Old Masters Gallery.

PSYCHIATRY: "Treatment of Overweight" will be discussed by Martin Katahn, professor of psychology at Vanderbilt University, at 1 p.m. in the Truman Veterans Hospital.

CAREER PLANNING AND PLACEMENT CENTER: "Your Resume, Write It Right" will be presented from 3:40-5 p.m. in 110 Noyes Bldg. Call 882-6803.

MSA FILM: "Lost Horizon" and "Hurricane Express 1934" will be shown at 8 p.m. in Memorial Union Aud. Cost: 25 cents.

17 September

COMPUTER CLASS: "Get to Know Your PC!" will be taught 11 a.m.-1 p.m. today and Sept. 19 and 21 at Computer U, 2 Brady Commons. Cost is \$60 for faculty/staff. Call 882-2133.

WOMEN'S CENTER: "Feminism: Nuts and Bolts" will be presented by Luci Lee and India McCause at noon in 1 Gentry Hall.

CAREER PLANNING AND PLACEMENT CENTER: Orientation to CPPC services will be held from 4-5 p.m. in 110 Noyes Bldg. Call 882-6803.

18 September

FACULTY LUNCHEON will be held from 11:30 a.m.-1:15 p.m. in the Memorial Union's Walt Disney Room (N208). Cost: \$4.50. Call 882-7405 by 5 p.m. Sept. 17.

CAREER PLANNING AND PLACEMENT CENTER: "Your Professional Image: Dressing for Success" will be held from 3:40-5 p.m. in 110 Noyes Bldg. "Teacher Plus: Using Skills Outside the Classroom" will be held from 7-9 p.m. in 110 Noyes Bldg. Call 882-6803.

MSA FILM: "Metropolis" will be shown at 8 p.m. in Ellis Library Aud.

19 September

PSYCHIATRY: "Working on the Behavioral Management of the Head Trauma Patient" will be held at the Missouri Institute of Psychiatry from 8 a.m.-5 p.m. in Kohler Aud., 5400 Arsenal St., St. Louis. Cost is \$50. Call 644-8803 to register.

FACULTY LUNCHEON will be held from 11:30 a.m.-1:15 p.m. in the Memorial Union's Walt Disney Room (N208). Cost: \$4.50. Call 882-7405 by 5 p.m. Sept. 18.

MUSEUM OF ART AND ARCHAEOLOGY: A gallery talk will start at 12:25 p.m.

COMPUTER CLASS: "Accounting Software" will be taught from 2-5 p.m. in Computer U, 2 Brady Commons. Cost for faculty/staff is \$30. Call 882-2133.

CAREER PLANNING AND PLACEMENT CENTER: "Shopping for a Major?" Learn helpful methods for choosing an appropriate major and career direction from 3:40-5 p.m. in 110 Noyes Bldg. Call 882-6803.

BLACK CULTURE CENTER: A forum on human sexuality and male/female relationships on and off campus will start at 7 p.m. in 823 Virginia Ave.

WOMEN'S CENTER: "Comparative Feminist Ideologies" will be presented by Dorothy Haecker, director of the women studies department, at 7 p.m. in 1 Gentry Hall.

MSA FILM: "Kramer vs. Kramer" will be shown at 7 and 9:30 p.m. in Ellis Library Aud.

UNIVERSITY THEATER: "Luann Hampton Laverty Oberlander" will be performed at 8 p.m. in the Rhynsburger Theater. Tickets are \$5 for the general public, \$4.50 for faculty/staff and \$2.50 for students and senior citizens. Call 882-2021.

GUEST ARTIST: John Gerber will perform on horn at 8 p.m. in the Fine Arts Recital Hall.

20 September

WOMEN'S CENTER: "Feminist Pedagogy: A Different Education" will be presented by women studies students at noon in 1 Gentry Hall.

GIST SEMINAR ON INTERNATIONAL AFFAIRS: Douglas Ensminger, professor emeritus, will present "The Food Crisis in Africa" from noon-1:15 p.m. in S16 Memorial Union.

FACULTY COUNCIL will meet at 3:40 p.m. in S110 Memorial Union.

MSA FILM: "Dr. No" will be shown at 7 p.m. and "Goldfinger" at 9:30 p.m. in Jesse Aud. Call 882-2888 week of films for price.

UNIVERSITY THEATER: "Luann Hampton Laverty Oberlander." See Sept. 19 listing.

UNIVERSITY FILM: "From Mao to Mozart: Isaac Stern in China" will be shown at 8 p.m. in Ellis Library Aud. Cost: \$1.



Master

French horn virtuoso Barry Tuckwell performs with Northern Sinfonia. See Oct. 17 listing.

21 September

CONTINUING LEGAL EDUCATION: "New Developments in Criminal Law and Jury Instructions" will be held from 8:30 a.m.-4:30 p.m. at the Columbia Flaming Pit, 601 Business Loop 70 W. Cost is \$75. Call Ken Dean at 882-7251.

AIR FORCE ROTC: All-Service Field Day will start at 4 p.m. in Cosmos Park.

MSA FILM: "Live and Let Die" will be shown at 7 p.m. and "Octopussy" at 9:30 p.m. and midnight in Jesse Aud. Call 882-2888 week of films for price.

UNIVERSITY THEATER: "Luann Hampton Laverty Oberlander." See Sept. 19 listing.

22 September

CROSS COUNTRY RUN: Recreation/Intramurals will sponsor the run at 8:30 a.m. at the A.L. Gustin Golf Course. Participating faculty, staff and students should pick up numbers at 8 a.m. at the course start near University Hall.

CHEMISTRY: The department picnic will be held today.

FOOTBALL: Team will play Mississippi State at 1:30 p.m. Cost: \$12.50 reserved seat, \$7.50 general admission.

MSA FILM: "Thunderball" will be shown at 7 p.m., "Never Say Never Again" will be shown at 9:30 p.m. and midnight, all in Jesse Aud. Call 882-2888 week of films for price.

UNIVERSITY THEATER: "Luann Hampton Laverty Oberlander." See Sept. 19 listing.

23 September

KBIA JAZZ FESTIVAL: "The Fifth Annual Jazz in the Garden Festival" will be held from noon-6 p.m. at the Shelter Insurance Gardens, 1816 W. Broadway. Four local jazz groups will play.

MSA MOVIE: "Of Human Bondage" and "The Mark of Zorro" will be shown at 8 p.m. in the Memorial Union Aud. Cost is 25 cents.

24 September

WOMEN'S CENTER: "In the Best Interest of Children," a film which examines child custody by lesbian mothers, will be shown at 7 p.m. in 1 Gentry Hall.

FACULTY RECITAL: Violinist Eva Szekely and pianist Daniel Schene will perform at 8 p.m. in the Fine Arts Recital Hall.

HEALTH RELATED PROFESSIONS WEEK: Evening speaker to be arranged.

25 September

EMPLOYEE DEVELOPMENT SEMINAR: "Meeting the Public" will be taught by counseling psychologist Wayne Anderson from 9 a.m.-noon in the Training and Development Conference Room, lower level Lewis Hall. Call 882-4859.

HEALTH RELATED PROFESSIONS WEEK: Blood drive will be held from 11 a.m.-4 p.m. in Brady Commons.

FACULTY LUNCHEON will be held from 11:30 a.m.-1:15 p.m. in Memorial Union's Scott Joplin-Blind Boone Room (N222 and N223). Cost: \$4.50. Call 882-7405 by 5 p.m. Sept. 24.

CAREER PLANNING AND PLACEMENT CENTER: "Organizing the Job Search" will be held from 7-9 p.m. in 110 Noyes Hall. Call 882-6803.

BLACK CULTURE CENTER: A self-help workshop on math anxiety will start at 7 p.m. at 823 Virginia Ave.

PAINE LECTURE IN RELIGION: Thomas F. Mathews, professor of art history at New York University, will present "Psychological Dimensions in the Art of Eastern Christendom" at 8 p.m. in 106 Pickard Hall. The event is sponsored by the departments of religious studies and art history and archaeology.

MSA FILM: "Los Olvidados" will be shown at 8 p.m. in Ellis Library Aud.

26 September

FACULTY LUNCHEON will be held from 11:30 a.m.-1:15 p.m. in Memorial Union's Scott Joplin-Blind Boone Room (N222 and N223). Cost: \$4.50. Call 882-7405 by 5 p.m. Sept. 25.

MUSEUM OF ART AND ARCHAEOLOGY: A gallery talk by Jane Biers on Greek painting will start at 12:25 p.m.

WOMEN'S CENTER: "Families: Resolving Conflict" will be presented by members of the Columbia Network of Parenting for Peace and Justice at 7 p.m. in 1 Gentry Hall.

VOLLEYBALL: Team will play Kansas at 7:30 p.m. in the Hearnes Arena. Cost: \$2 faculty/staff, \$1 students.

MSA FILM: "Pat and Mike" will be shown at 7 and 9:30 p.m. in Ellis Aud.

CHEMISTRY: The Columbia Chapter of the American Chemistry Society is sponsoring a talk by John M. Cassady of Purdue University at 7:30 p.m. in 120 Physics Bldg.

SYMPOSIUM: The U.S. Equal Employment Opportunity Commission will conduct a Voluntary Assistance Program symposium, co-sponsored by the Office of Equal Opportunity, at the Memorial Union.

HEALTH RELATED PROFESSIONS WEEK: Service project to be arranged.

27 September

GIST SEMINAR ON INTERNATIONAL AFFAIRS: Richard Hoft, professor of electrical engineering, will present "The Japanese Competitive Challenge in Technology and Work" from noon-1:15 p.m. in S16 Memorial Union.

HEALTH SERVICES CAREER DAY: This will be an opportunity to meet with hospitals and health agencies about full-time and summer employment from 1-4 p.m. in the Memorial Union ballroom. The event is sponsored by the Career Planning and Placement Center, and schools of Nursing and Health Related Professions.

STAFF ADVISORY COUNCIL will meet at 1:15 p.m. in S204 Memorial Union.

BLACK CULTURE CENTER: A forum on cross-cultural communications will start at 7 p.m. in 823 Virginia Ave.

WOMEN'S CENTER: "Black Families" will be discussed by Lois Bryant at 7 p.m. in 1 Gentry Hall.

UNIVERSITY FILM: "Querelle de Brest" will be shown at 8 p.m. in Ellis Library Aud. Cost is \$1.

28 September

CAREER PLANNING AND PLACEMENT CENTER: Orientation to CPPC services will be held from 4-5 p.m. in 110 Noyes Bldg. Call 882-6803.

CONCERT PREVIEW: Musicologist Michael Budds will review the Saint Louis Symphony at 6:30 p.m. in the Fine Arts Recital Hall.

MSA FILM: "The Bounty" will be shown at 7 and 9:30 p.m. in Middlebush Aud. Cost is \$1.50.

HEALTH RELATED PROFESSIONS WEEK:

Dance will begin at 7 p.m. at the Jaycees Hall.

CONCERT SERIES: The Saint Louis Symphony Orchestra, with Misha Dickter on the piano and Leonard Slatkin conducting, will perform at 7:30 p.m. in Jesse Aud. Cost is \$12, \$11 for students. Call 882-3875.

MSA FILM: "Mad Max" will be shown at midnight in Middlebush Aud. Cost is \$1.

29 September

INDIAN POW WOW: Northern Cherokee Inter-Tribal Pow Wow will be held from 2-7:30 p.m. today and 1-5 p.m. Sept. 30 at the Boone County Fairgrounds. Gourd dancing and inter-tribal activities are included. Admission is free, however, a \$1 donation will give you a chance to win Indian statues. Call 882-6961 or 442-8050.

FOOTBALL: Team will play Notre Dame at 2:50 p.m. Cost: \$15 reserved seat, \$7.50 general admission.

MSA FILM: "Moscow on the Hudson" will be shown at 7 and 9:30 p.m. in Middlebush Aud. Cost is \$1.50. "Mad Max" will be shown at midnight in Middlebush Aud. Cost: \$1.

30 September

VETERINARY MEDICINE: "The 60th Annual Conference for Veterinarians" will be held today through Oct. 1 at the College of Veterinary Medicine and Hearnes Multipurpose Bldg. Speakers will discuss small and large animal medicine and surgery. Cost: \$65 for pre-registration; \$80 for registration. Call 882-3254.

MSA FILM: "Mr. Deeds Goes to Town" and "The Tragic Plunge" will be shown at 8 p.m. in the Memorial Union Aud. Cost: 25 cents.

1 October

COMPUTER COURSE: "Manage Information Using a Data Base (Novice)" will be taught from 10 a.m.-noon today and Oct. 3, 5 and 8 at Computer U, 2 Brady Commons. Cost for faculty/staff is \$80. Call 882-2133.

WOMEN'S CENTER: "Sexuality and Aging" will be discussed at noon in 1 Gentry Hall.

FACULTY RECITAL: Soprano Virginia Pyle, assisted by tenor Donald Pyle and pianist Raymond Herbert, will perform at 8 p.m. in the Fine Arts Recital Hall.

APPLICATIONS for development leaves or research leaves to begin September 1985 and beyond and for faculty development project grant program for projects to begin before May 1 are due in the provost's office.

2 October

COMPUTER COURSE: "Document Writing with Word Star (Advanced)" will be taught from 10 a.m.-noon today and Oct. 4, 9 and 11 at Computer U, 2 Brady Commons. Cost for faculty/staff is \$80. Call 882-2133.

CAREER PLANNING AND PLACEMENT CENTER: "Your Resume, Write It Right" will be presented from 3:40-5 p.m. in 110 Noyes Bldg. "Resumes and Applications" will be held from 7-9 p.m. in 110 Noyes Bldg. Call 882-6803.

MSA FILM: "Carman" will be shown at 8 p.m. in Ellis Library Aud.

PAINE LECTURE IN RELIGION: John W. Cook, professor of religion and the arts at Yale Divinity School, will present "Picturing Theology: Martin Luther and Lucas Cranach" at 8 p.m. in 106 Pickard Hall. The event is sponsored by the departments of religious studies and art history and archaeology.

3 October

WOMEN'S CENTER: "Teenage Sexuality" will be discussed by Dolores Hemphill of Planned Parenthood at noon in 1 Gentry Hall.

MUSIC AMONG THE MASTERS: Esterhazy Quartet will perform at 12:25 p.m. in the Museum of Art and Archaeology.

PSYCHIATRY: "Children with Communication Disorders: A Group at Psychiatric Risk" will be presented by Dennis P. Cantwell, professor of psychiatry at UCLA, at 1 p.m. at the Health Sciences Center Aud.

TOURS FROM THE TOWER

Half-hour tours of campus points of interest

Francis Quadrangle Historic District, Museum of Art and Archaeology, Museum of Anthropology, Woodland and Floral Gardens . . . or whatever you choose.

1:45 pm MON.-FRI.
10 am SAT. by appointment only
 when UMC classes are in session

Leave from North Lobby of Memorial Union

To arrange for groups of more than 10 or for special tours, call or stop in at Visitor and Guest Relations, 103 Swallow Hall on the Quadrangle, phone (314) 882-6333, 8:00 am to 5:00 pm Monday through Friday.



University of Missouri-Columbia
 Visitor & Guest Relations Office

103 Swallow Hall
 Columbia, Missouri 65211

CAREER PLANNING AND PLACEMENT CENTER: "Your Job Interviews: Are You Ready?" will be presented from 3:40-5 p.m. in 110 Noyes Bldg. Call 882-6803.

MSA FILM: "Carnal Knowledge" will be shown at 7 and 9:30 p.m. in Ellis Library Aud.

VOLLEYBALL: Team will play Southern Illinois at 7:30 p.m. in the Hearnes Arena. Cost: \$2 faculty/staff, \$1 students.

4 October

EMPLOYEE DEVELOPMENT SEMINAR: "Effective Interviewing" will be taught by Charles Hunter, manager of employment services, from 9 a.m.-4 p.m. in the Training and Development Conference Room, lower level of Lewis Hall. Call 882-4859.

FACULTY COUNCIL will meet at 3:40 p.m. in S110 Memorial Union.

CAREER PLANNING AND PLACEMENT CENTER: Orientation to CPPC services will be held from 4-5 p.m. in 110 Noyes Bldg. Call 882-6803.

WOMEN'S CENTER: "Lesbian Sexuality" will be discussed at 7 p.m. in 1 Gentry Hall.

UNIVERSITY FILM: "We of the Never Never" will be shown at 8 p.m. in Ellis Library Aud. Cost is \$1.

5 October

MSA FILM: "Broadway Danny Rose" will be shown at 7 and 9:30 p.m. in Middlebush Aud. Cost is \$1.50. "American Graffiti" will be shown at midnight in Jesse Aud. Cost is \$1.

STUDENT ENSEMBLE: University Philharmonic, conducted by Edward Dolbashian, will perform at 8 p.m. in Jesse Aud.

6 October

BIG ED SATURDAY: The College of Education Office of External Relations will sponsor the event from 9-11 a.m. in Memorial Union.

FOOTBALL: Team will play Colorado at 1:30 p.m. Cost: \$12.50 reserved seat, \$7.50 general admission.

MSA FILM: "Romancing the Stone" will be

shown at 7 and 9:30 p.m. in Jesse Aud. Cost is \$1.50. "American Graffiti" will be shown at midnight in Jesse Aud. Cost is \$1.

FACULTY RECITAL: Pianist Janice Wenger will perform at 8 p.m. in the Fine Arts Recital Hall.

7 October

MSA FILM: "Top Hat" and "The Goddess of the Far West" will be shown at 8 p.m. and "Flying Down to Rio" will be shown at 9:30 p.m., both in Memorial Union Aud. Cost for each showing is 25 cents.

8 October

INTERNATIONAL BAZAAR: The international students of UMC will sponsor this annual celebration of cultures from 10 a.m.-4 p.m. on the lawn in front of Read and Gentry halls.

WOMEN'S CENTER: "Adult Children of Alcoholics" will be discussed by Marion Typpo and Jill Hastings at noon in 1 Gentry Hall.



A&S BRICK LECTURE SERIES: Michael Walzer from the Institute for Advanced Study at Princeton University will speak on "Commitment and Social Criticism: Julien Benda and Intellectual Treason" at 8 p.m. in 210 General Classroom Bldg.

BASKETBALL LEAGUE: Faculty/staff basketball league entries are due today in 106 Rothwell. Cost is \$25 a team. League play, sponsored by Recreation/Intramurals, will begin Oct. 15.

FACULTY RECITAL: Esterhazy Quartet will perform at 8 p.m. in the Fine Arts Recital Hall.

9 October

EMPLOYEE DEVELOPMENT SEMINAR: "Assertiveness: Your Perfect Right" will be presented by Jeanne Nolan, assistant program director of UM extension, from 9 a.m.-noon in the Training and Development Conference Room, lower level of Lewis Hall. Call 882-4859.

FACULTY LUNCHEON will be held from 11:30 a.m.-1:15 p.m. in Memorial Union's Scott Joplin-Blind Boone Room (N222 and N223). Cost: \$4.50. Call 882-7405 by 5 p.m. Oct. 8.

CAREER PLANNING AND PLACEMENT CENTER: "The Job Interview and Dressing for It" will be held from 7-9 p.m. in 110 Noyes Bldg. Call 882-6803.

VOLLEYBALL: Team will play Kansas State at 7:30 p.m. in the Hearnes Arena. Cost: \$2 faculty/staff, \$1 students.

MSA FILM: "The Ballad of Gregorio Cortez" will be shown at 8 p.m. in Ellis Library Aud.

A&S BRICK LECTURE SERIES: Michael Walzer from the Institute for Advanced Study at Princeton University will speak on "Commitment and Social Criticism: Albert Camus' Algerian War" at 8 p.m. in 210 General Classroom Bldg.

PAINE LECTURE IN RELIGION: Jonathon Brown, professor of art history at New York University, will present "El Greco Between the Renaissance and the Counter Reformation" at 8 p.m. in 106 Pickard Hall. The event is sponsored by the departments of religious studies and art history and archaeology.

10 October

BLACK STUDIES: "Black Students on the Predominantly White Campus" will be discussed by Paul Taylor, West Junior High School counselor, from 11:30 a.m.-1 p.m. in S8 Memorial Union. Bring a sack lunch; beverages will be provided.

FACULTY LUNCHEON will be held from 11:30 a.m.-1:15 p.m. in Memorial Union's Scott Joplin-Blind Boone Room (N222 and N223). Cost: \$4.50. Call 882-7405 by 5 p.m. Oct. 9.

MUSEUM OF ART AND ARCHAEOLOGY: A one-act play, "The Stronger" by August Strindberg, will be presented at 12:25 p.m.

PSYCHIATRY: "The Sound of Fury: A Family Systems Perspective" will be presented by Robert L. Blake, associate professor of family and community medicine, at 1 p.m. in the Truman Veterans Hospital.

COMPUTER COURSE: "Plan, Compare and Evaluate Your Computer Needs" will be taught from 2:30-4:30 p.m. today and Oct. 11 at Computer U, 2 Brady Commons. Cost for faculty/staff is \$80. Call 882-2133.

CAREER PLANNING AND PLACEMENT CENTER: "How to Job Hunt Successfully" will be held from 3:40-5 p.m. in 110 Noyes Bldg. Orientation to CPPC services will be held from 4-5 p.m. in 110 Noyes Bldg. Call 882-6803.

MSA FILM: "Seven Brides for Seven Brothers" will be shown at 7 and 9:30 p.m. in Ellis Library Aud.

WOMEN'S CENTER: "PMS: It's Not Just the Cramps" will be presented by Lana Jacobs at 7 p.m. in 1 Gentry Hall.

A&S BRICK LECTURE SERIES: Michael Walzer from the Institute for Advanced Study at Princeton University will speak on "Commitment and Social Criticism: The Lonely Politics of Michel Foucault" at 8 p.m. in 210 General Classroom Bldg.

STUDENT ENSEMBLE: Studio Jazz Ensemble, directed by Jeffrey Lemke, will perform at 8 p.m. in Jesse Aud.

11 October

JOURNALISM: The first meeting of the Advertising Advisory Board, open to faculty and deans of the Journalism School, will meet through lunch Oct. 12 in 105 Neff



Legendary Violinist Itzhak Perlman brings his talent to Jesse Aud. See Nov. 29 listing.

Hall. Call 882-7362.

GIST SEMINAR ON INTERNATIONAL AFFAIRS: Derek Gill, professor of family and community medicine, will present "Medical Care in Quebec Province" from noon-1:15 p.m. in S8 Memorial Union.

WOMEN'S CENTER: "Feeling Healthy in the Nuclear Age" will be presented by Martha Pickens at noon in 1 Gentry Hall.

STAFF ADVISORY COUNCIL will meet at 1:15 p.m. in S204 Memorial Union.

UNIVERSITY FILM: "Circle of Deceit" will be shown at 8 p.m. in Ellis Library Aud. Tickets are \$1.

12 October

MSA FILM: "The Natural" will be shown in Jesse Aud. Cost is \$1.50, 7 and 9:30 p.m.; \$1, midnight.

FACULTY RECITAL: Lawrence Lowe on the horn will perform at 8 p.m. in the Fine Arts Recital Hall.

13 October

AGRICULTURE FIELD DAY: Wurdack Farm Cattle and Pasture Improvement Day will be held today in Steelville, Mo.

MSA FILM: "Splash" will be shown at 7 and 9:30 p.m. in Jesse Aud. Cost is \$1.50.

14 October

MSA FILM: "Captain Courageous" and "The Legend of the Lone Ranger" will be shown at 8 p.m. in Memorial Union Aud. Cost is 25 cents.

15 October

UNIVERSITY CLUB: The October luncheon meeting will be held at noon in Memorial Union's Benton-Bingham Room (N214-N215).

COMPUTER COURSE: "Modeling with Lotus (Intermediate)" will be taught from 2:30-4:30 p.m. today and Oct. 15, 17, 19 and 22 at Computer U, 2 Brady Commons. Cost for faculty/staff is \$80. Call 882-2133.

WOMEN'S CENTER: "A Rape is a Rape" will be presented by Nancy Moffitt and Dorothy Sikyta at 7 p.m. in 1 Gentry Hall.

STUDENT ENSEMBLE: Wind Ensemble, directed by Dale Kennedy, will perform at 8 p.m. in Jesse Aud.

16 October

EMPLOYEE DEVELOPMENT SEMINAR: "Human Relations" will be taught by Blake Danuser, human resource development manager, from 10 a.m.-noon today and Oct. 18, 22, 24 and 26 in the Training and Development Conference Room, lower level of Lewis Hall. Call 882-4859.

FACULTY LUNCHEON will be held from 11:30 a.m.-1:15 p.m. in Memorial Union's Scott Joplin-Blind Boone Room (N222 and N223). Cost: \$4.50. Call 882-7405 by 5 p.m. Oct. 15.

COMPUTER COURSE: "Graphics Using a Personal Computer" will be taught from 3-5:30 p.m. today and Oct. 18 at Computer U, 2 Brady Commons. Cost for faculty/staff is \$50. Call 882-2133.

GENERAL FACULTY MEETING: Chancellor Barbara S. Uehling will deliver the "State of the Campus" address at 3:40 p.m. in the Memorial Union's Mark Twain Room (large ballroom).

CAREER PLANNING AND PLACEMENT CENTER: Orientation to CPPC services will be held from 4-5 p.m. in 110 Noyes Bldg. "Career Exploration for Women," a three-week workshop, will be held from 7-9 p.m. in 110 Noyes Bldg. Call 882-6803.

MSA FILM: "L'Atalante" will be shown at 8 p.m. in Ellis Library Aud.

17 October

MUSEUM OF ART AND ARCHAEOLOGY: A gallery talk about the current special exhibition, "Art of South and Southeast Asia," will be presented by director Forrest McGill at 12:25 p.m.

CAREER PLANNING AND PLACEMENT CENTER: "Developing Your Own Internship or Co-op" will be presented from 3:40-5 p.m. in 110 Noyes Bldg. Call 882-6803.

WOMEN'S CENTER: "Adult Survivors of Child Abuse" will be presented by Lisa Polette, MSW, at 7 p.m. in 1 Gentry Hall.

VOLLEYBALL: Team will play Southwest Missouri State at 7:30 p.m. in the Hearnes Arena. Cost: \$2 faculty/staff, \$1 students.

CONCERT PREVIEW: Musicologist Michael Budds will preview the Northern Sinfonia of England at 7 p.m. in the Fine Arts Recital Hall.

CONCERT SERIES: Northern Sinfonia of England, with Barry Tuckwell, French horn, conductor and soloist, will perform at 8 p.m. in Jesse Aud. Tickets are \$11; \$10 for students. Call 882-3875.

MSA FILM: "East of Eden" will be shown at 8 p.m. and "Rebel Without a Cause" will be shown at 9:30 p.m. in Ellis Library Aud.

18 October

COMPUTER COURSE: "What Can the PC Do for You?" will be taught from 10 a.m.-1 p.m. at Computer U, 2 Brady Commons. Cost: \$30 for faculty/staff. Call 882-2133.

WOMEN'S CENTER: "Incest" will be discussed by Luci Lee and Lisa Smith at noon in 1 Gentry Hall.

GIST SEMINAR ON INTERNATIONAL AFFAIRS: Harold Breimyer, professor emeritus of agricultural economics, will present "International Trade" from noon-1:15 p.m. in S16 Memorial Union.

FACULTY COUNCIL will meet at 3:40 p.m. in S110 Memorial Union.

SURGERY: Lazar J. Greenfield, professor and chairman of the surgery department at the Medical College of Virginia, will speak on "Right Ventricular Dysfunction in Shock" at 4 p.m. in the Truman Veteran's Hospital Aud.

CAREER PLANNING AND PLACEMENT CENTER: "Law Careers Night" will be held from 7-9 p.m. in Memorial Union's Mark Twain Room (N201 and N202).

UNIVERSITY FILM: "Danton" will be shown at 7 and 9:30 p.m. in Ellis Library Aud. Cost: \$1.

19 October

MSA FILM: "Never Cry Wolf" will be shown at 7 and 9:30 p.m. in Jesse Aud. Cost: \$1.50. "Excalibur" will be shown at midnight in Jesse Aud. Cost: \$1.
GUEST ARTIST: Pianist Daniel Schene will perform at 8 p.m. in the Fine Arts Recital Hall.

20 October

ARMY ROTC: "The All-Service ROTC Fall Awards Parade" will start at 10 a.m. on Francis Quadrangle.
COMPUTER COURSE: "Children and Computers" (ages 10-14, must be accompanied by adult) will be taught from 10:30 a.m.-12:30 p.m. at Computer U, 2 Brady Commons. Cost for faculty/staff children is \$20. Call 882-2133.
WOMEN'S GOLF: Team will play in Missouri Invitational through Oct. 21 at the A.L. Gustin Golf Course. Cost: \$2 faculty/staff, \$1 students.
ARMY ROTC: The fall formal for ROTC students and invited guests will begin at 6 p.m. at the Flaming Pit Restaurant in Parkade Plaza. Cost information will be announced.
MSA FILM: "Tender Mercies" will be shown at 7 and 9:30 p.m. in Middlebush Aud. Cost is \$1.50.

21 October

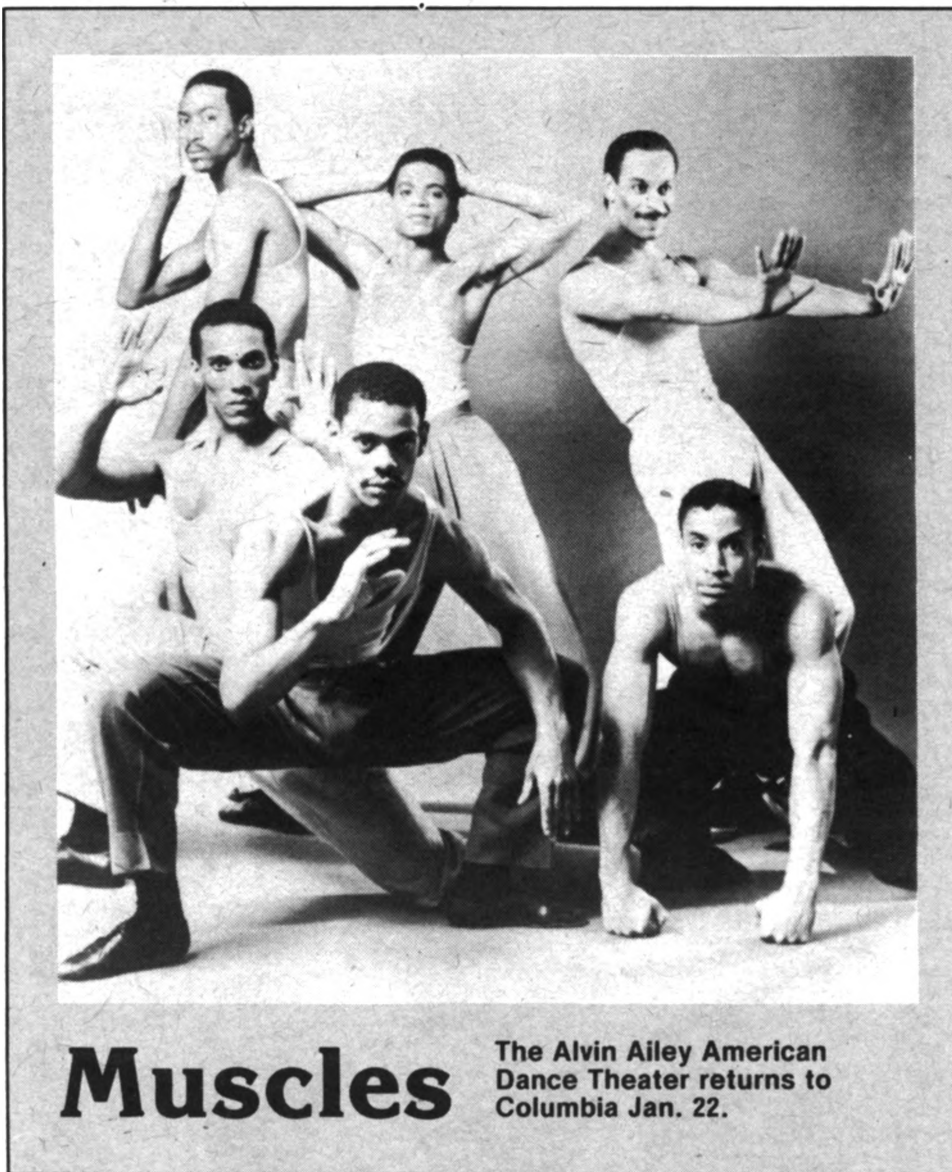
MSA FILM: "Babes in Arms" and "G.B. Shaw Talks for Movietone" will be shown at 7 p.m. in Memorial Union Aud. Cost is \$1.50. "Babes on Broadway" will be shown at 8 p.m. in Memorial Union Aud. Cost is 25 cents.

22 October

WOMEN'S CENTER: "Pornography: WAVAW Slide Show" will be shown at noon in I Gentry Hall.
MSA CRAFT STUDIO: Beginning woodworking will be taught from 6:30-9 p.m. for the next five Mondays in 203 Brady Commons. Cost is \$21 for students, \$26 for others. Black and white photo, session I, will be taught today in 203 Brady Commons. Cost is \$25 students, \$30 for others. Call 882-2889.
FACULTY RECITAL: Richard Hills will perform on the clarinet at 8 p.m. in the Fine Arts Recital Hall.
APPLICATIONS for summer research fellowship program are due in the provost's office.

23 October

EMPLOYEE DEVELOPMENT SEMINAR: "Personnel Policy and Resources" will be taught by Roland Juhnke, personnel director; Connie Wood, assistant personnel director; Roger Jett, manager of wage/salary administration; Charles Hunter, manager of employment services; and Susan Bliss, manager of training and development, from 9 a.m.-4 p.m. in the Training and Development Conference Room, lower level of Lewis Hall. Call 882-4859.
FACULTY LUNCHEON will be held from 11:30 a.m.-1:15 p.m. in Memorial Union's Scott Joplin-Blind Boone Room (N222 and N223). Cost: \$4.50. Call 882-7405 by 5 p.m. Oct. 22.
COMPUTER COURSE: "Computer Communications" will be taught from 3-6 p.m. at Computer U, 2 Brady Commons. Cost for faculty/staff is \$30. Call 882-2133.
CAREER PLANNING AND PLACEMENT CENTER: "Your Job Interviews: Are You Ready?" will be presented from 3:40-5 p.m. in 110 Noyes Bldg. Call 882-6803.
MSA CRAFT STUDIO: Pot throwing will be taught for the next five Tuesdays from 6:30-8:30 p.m. in 203 Brady Commons. Spinning will be taught for the next five Tuesdays from 6:30-9 p.m. in 203 Brady Commons. Cost for each class is \$21 for students and \$26 for others. Black and white photo, session II, will be taught today in 203 Brady Commons. Cost is \$25 for students, \$30 for others. Call 882-2889.
MSA FILM: "The Cranes Are Flying" will be shown at 8 p.m. in Ellis Library Aud.



Muscles

The Alvin Ailey American Dance Theater returns to Columbia Jan. 22.

24 October

COMPUTER COURSE: "Data Base Management with DB-II (Intermediate)" will be taught from 11 a.m.-1 p.m. today and Oct. 26, 30 and Nov. 2 at Computer U, 2 Brady Commons. Cost for faculty/staff is \$80. Call 882-2133.
FACULTY LUNCHEON will be held from 11:30 a.m.-1:15 p.m. in Memorial Union's Scott Joplin-Blind Boone Room (N222 and N223). Cost: \$4.50. Call 882-7405 by 5 p.m. Oct. 23.
MUSEUM OF ART AND ARCHAEOLOGY: A gallery talk, "Art and Religion in India," will be given by Joel Brereton, department of religious studies, at 12:25 p.m.
CAREER PLANNING AND PLACEMENT CENTER: "Shopping for a Major?" Learn helpful methods for choosing an appropriate major and career direction from 3:40-5 p.m. in 110 Noyes Bldg. Call 882-6803.
MSA CRAFT STUDIO: Weaving, stained glass and batik will be taught from 6:30-9 p.m. for the next five Wednesdays in 203 Brady Commons. Cost for each class is \$21 for students, \$26 for others. Black and white photo, session III, will be taught today in 203 Brady Commons. Color printing will be taught from 6:30-8:30 p.m. for the next three Wednesdays in 203 Brady Commons. Cost: \$25 for students, \$30 for others. Call 882-2889.
MSA FILM: "The Candidate" will be shown at 7 and 9:30 p.m. in Ellis Library Aud.
WOMEN'S CENTER: The film, "Pornography: Not a Love Story," will be shown at 7 p.m. in I Gentry Hall.
STUDENT ENSEMBLE: UMC Jazz Combos, directed by Jeffrey Lemke, will perform at 8 p.m. in the Fine Arts Recital Hall.

25 October

BOARD OF CURATORS will meet in Columbia today and Friday.
WOMEN'S CENTER: "Images of Pornography," a video tape, will be shown at noon in I Gentry Hall.
COMPUTER COURSE: "Maximizing Lotus Using Macros (Advanced)" will be taught from 1-3 p.m. today and Oct. 29, 31 and Nov. 2 at Computer U, 2 Brady Commons. Cost for faculty/staff is \$80. Call 882-2133.
STAFF ADVISORY COUNCIL will meet at 1:15 p.m. in S204 Memorial Union.

CAREER PLANNING AND PLACEMENT CENTER: "Your Resume, Write It Right" will be presented from 3:40-5 p.m. in 110 Noyes Bldg. Call 882-6803.
MSA CRAFT STUDIO: Papermaking and calligraphy will be taught from 6:30-9 p.m. for the next five Thursdays in 203 Brady Commons. Cost for each class is \$21 for students, \$26 for others. Call 882-2889.
UNIVERSITY FILM: "Bob, Le Flambeur" will be shown at 8 p.m. in Ellis Library Aud. Cost: \$1.

26 October

HOMECOMING 1984: Greek Town house decorations featuring the theme "Tigers Grab the Spotlight, Cyclones Fall from Stage Fright" will be on display from 7-10 p.m. The Homecoming carnival will last from 7 p.m.-midnight at the Livestock Center area.
MSA FILM: "Yentl" will be shown at 7 and 9:30 p.m. in Jesse Aud. Cost is \$1.50.
VOLLEYBALL: Team will play Iowa State at 7:30 p.m. in the Hearnes Arena. Cost: \$2 faculty/staff, \$1 public.

27 October

BID ED SATURDAY: The College of Education Office of External Relations will sponsor the event from 9-11 a.m. in Memorial Union.
HOMECOMING 1984: The Homecoming parade will start at 8:30 a.m. The route goes from campus to downtown. The Alumni Association's Homecoming luncheon will start at 10:30 a.m. at the Hearnes Bldg. Tickets are \$7.50 for adults, \$6.50 for students and children. For reservations, call 882-6611. The Tigers will play Iowa State at 1:30 p.m. Cost: \$12.50 reserved seat, \$7.50 general admission. The Homecoming carnival, located at the Livestock Center area, will last from noon-midnight.
MSA FILM: "The Dresser" will be shown at 7 and 9:30 p.m. in Jesse Aud. Cost: \$1.50.

28 October

HOMECOMING 1984: The Homecoming Carnival will last from noon-8 p.m. in the Livestock Center area.

CONCERT SERIES: Saint Louis Symphony Pops Concert, with conductor Richard Hayman, mezzo soprano Patricia Miller and the UMC Choral Union, will perform at 3 p.m. in Jesse Aud. Tickets are \$8, \$7 for students. Call 882-3875.
MSA FILM: "The Bride of Frankenstein" and "The Floating Queen" will be shown at 8 p.m. in Memorial Union Aud. Cost: \$1.50.

29 October

WOMEN'S CENTER: "The Personal is Political: International Feminism" will be discussed in a panel format at noon in I Gentry Hall.
PEACE STUDIES FILM: "Hearts and Minds" will be shown from 3:45-5:45 p.m., 7-9 p.m. and 9:30-11:30 p.m. in Middlebush Aud. Cost: \$1.
CAREER PLANNING AND PLACEMENT CENTER: Orientation to CPPC services will be held from 4-5 p.m. in 110 Noyes Bldg. Call 882-6803.
UNIVERSITY THEATER: "Annie" will be performed at 8 p.m. through Nov. 3 in the Rhynsburger Theater. Tickets are \$6 for the general public, \$5.50 for faculty/staff and \$3 for students and senior citizens. Call 882-2021.
FACULTY RECITAL: Missouri Arts Quintet will perform at 8 p.m. in the Fine Arts Recital Hall.
RACQUETBALL SINGLES: Entries will close today for men's and women's faculty/staff racquetball singles in 106 Rothwell. Cost: \$4. Sponsored by Recreational/Intramurals, play will begin Nov. 5.

30 October

FUND RAISER: KBIA radio will conduct on-air fund raising from 6-1 a.m. through Nov. 3.
FACULTY LUNCHEON will be held between 11:30 a.m.-1:15 p.m. in Memorial Union's Scott Joplin-Blind Boone Room (N222 and N223). Cost: \$4.50. Call 882-7405 by 5 p.m. Oct. 29.
CAREER PLANNING AND PLACEMENT CENTER: "Shopping for a Major?" Learn helpful methods for choosing an appropriate major and career direction from 3:40-5 p.m. in 110 Noyes Bldg. Call 882-6803.
MSA FILM: "The Tin Drum" will be shown at 8 p.m. in Ellis Aud.
UNIVERSITY THEATER: "Annie." See Oct. 29 listing.

31 October

FACULTY LUNCHEON will be held from 11:30 a.m.-1:15 p.m. in Memorial Union's Scott Joplin-Blind Boone Room (N222 and N223). Cost: \$4.50. Call 882-7405 by 5 p.m. Oct. 30.
MUSEUM OF ART AND ARCHAEOLOGY: A gallery tour titled "A Teutonic Treasure" will be given by Edzard Baumann at 12:25 p.m.
WOMEN'S CENTER: "Election Preview: A Woman's Perspective" will be discussed by Jackie White and Kathryn Lowe at 7 p.m. in I Gentry Hall.
STUDENT ENSEMBLE: UMC Brass Choir, directed by Betty Scott, will perform at 8 p.m. in the Fine Arts Recital Hall.
MSA FILM: "Carrie," "The Omen" and "Phantasm" will be shown at 7, 9 and 11 p.m. in Jesse Aud. Call 882-2888 week of films for price.
UNIVERSITY THEATER: "Annie." See Oct. 29 listing.

1 November

GIST SEMINAR ON INTERNATIONAL AFFAIRS: William Fisch, professor of law, will discuss "International Terrorism" from noon-1:15 p.m. in S16 Memorial Union.
FACULTY COUNCIL will meet at 3:40 p.m. in S110 Memorial Union.
WOMEN'S CENTER: Radical and non-radical activism will be discussed at noon in I Gentry Hall.
UNIVERSITY THEATER: "Annie." See Oct. 29 listing.
CAREER PLANNING AND PLACEMENT CENTER: "Transitions: Dimensions of Going from X to Y," a three-week workshop, will start from 7-9 p.m. in 110 Noyes Bldg. Call 882-6803.
MSA FILM: "Lifeboat" will be shown at 7 p.m. in Jesse Aud. Call 882-2888 week of film for price.

UNIVERSITY FILM: "The Wild Child" will be shown at 8 p.m. in Ellis Library Aud. Cost is \$1.

MSA FILM: "Rope" will be shown at 9:30 p.m. in Jesse Aud. Call 882-2888 week of film for price.

2 November

MSA FILM: "North By Northwest" will be shown at 7 p.m. in Jesse Aud. Call 882-2888 week of film for price.

FACULTY RECITAL: Steve Giebel, flute, will perform at 8 p.m. in the Fine Arts Recital Hall.

UNIVERSITY THEATER: "Annie." See Oct. 29 listing.

MSA FILM: "Rear Window" will be shown at 9:30 p.m. and midnight in Jesse Aud. Call 882-2888 week of film for price.

3 November

MSA FILM: "Frenzy" will be shown at 7 p.m. in Jesse Aud. Call 882-2888 week of film for price.

VOLLEYBALL: Team will play Nebraska at 7:30 p.m. in the Hearnes Arena. Cost: \$2 faculty/staff, \$1 students.

UNIVERSITY THEATER: "Annie." See Oct. 29 listing.

MSA FILM: "Vertigo" will be shown at 9:30 p.m. and midnight in Jesse Aud. Call 882-2888 week of film for price.

4 November

VOLLEYBALL: Team will play Illinois State at 2 p.m. in the Hearnes Arena. Cost: \$2 faculty/staff, \$1 students.

STUDENT ENSEMBLE: Collegium Musicum, directed by Andrew Minor, will perform at 3 p.m. in the Fine Arts Recital Hall.

MSA FILM: "Ball of Fire" and "The Musketeers of Pig Alley" will be shown at 8 p.m. in Memorial Union Aud. Cost: 25 cents.

5 November

COMPUTER COURSE: "Fundamentals of Lotus 1-2-3 (Novice)" will be taught from 10 a.m.-noon today and Nov. 7, 9 and 12 at Computer U, 2 Brady Commons. Cost for faculty/staff is \$80. "PC-DOS/Using the PC Operating System" will be taught from 3-5 p.m. today and Nov. 7, 9 and 12. Cost for faculty/staff is \$80. Call 882-2133.

WOMEN'S CENTER: "Confronting Racist Behavior" will be discussed by Carolyn Dorsey at noon in 1 Gentry Hall.

EMPLOYMENT DEVELOPMENT SEMINAR: "Teamwork" will be presented by Jo Behymer, associate professor of practical and vocational/technical education, from 1-4 p.m. in the Training and Development Conference Room, lower level of Lewis Hall. Continues Nov. 7. Call 882-4859.

STUDENT ENSEMBLE: University Singers, conducted by Duncan Couch, will perform at 8 p.m. in the First Presbyterian Church.

6 November

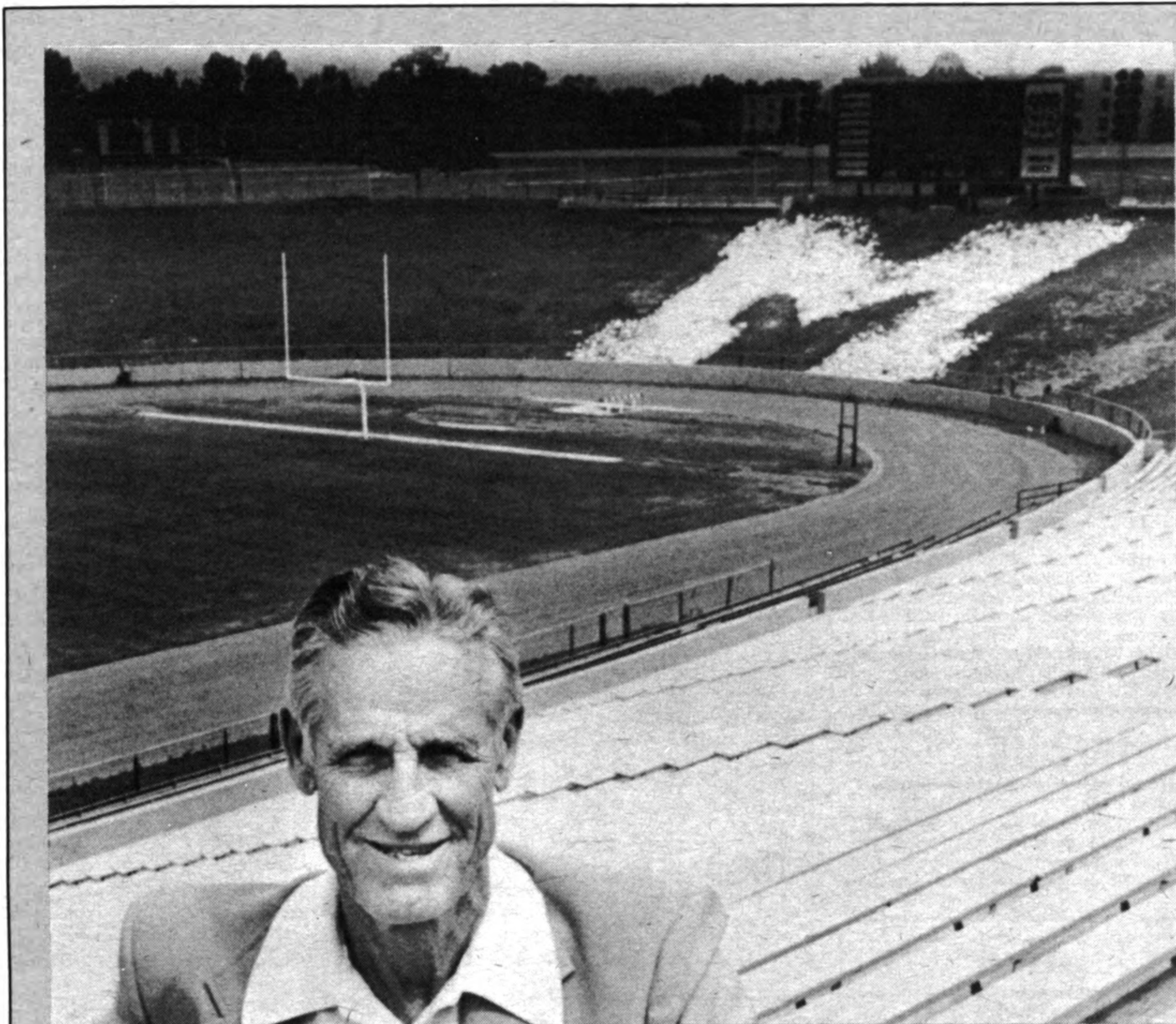
EMPLOYEE DEVELOPMENT SEMINAR: "Personnel Policy and Procedures" will be presented by Roland Juhnke, personnel services director; Roger Jett, manager of wage/salary administration; and Charles Hunter, manager of employment services, from 9 a.m.-4 p.m. in the Training and Development Conference Room, lower level of Lewis Hall. Call 882-4859.

FACULTY LUNCHEON will be held from 11:30 a.m.-1:15 p.m. in Memorial Union's Scott Joplin-Blind Boone Room (N222 and N223). Cost: \$4.50. Call 882-7405 by 5 p.m. Nov. 5.

COMPUTER COURSES: "Four-Point Graphics (Intermediate)" will be taught from 3-5:30 p.m. today and Nov. 8 at Computer U, 2 Brady Commons. Cost for faculty/staff is \$50. "Get to Know Your PC!" will be taught from 11 a.m.-1 p.m. today and Nov. 8 and 13. Cost for faculty/staff is \$60. Call 882-2133.

MSA FILM: "La Cage Aux Folles" will be shown at 7 and 9:30 p.m. in Ellis Library Aud.

STUDENT ENSEMBLE: Singsations, directed by Ira Powell, will perform at 8 p.m. in the Fine Arts Recital Hall.



Faurot

Join in honoring Mizzou's legendary coach on Don Faurot Day, the Sept. 22 Mississippi State contest. See calendar listing.

APPLICATIONS for research council grants due in the provost's office.

7 November

UNIVERSITY CLUB: The November luncheon meeting will be held at noon in Memorial Union's Benton-Bingham Room (N214-N215).

FACULTY LUNCHEON will be held from 11:30 a.m.-1:15 p.m. in Memorial Union's Scott Joplin-Blind Boone Room (N222 and N223). Cost: \$4.50. Call 882-7405 by 5 p.m. Nov. 6.

PSYCHIATRY: "Family Systems Therapy" will be presented by Donald J. Shoulberg, director of Marriage and Family Services of Topeka, Kan., at 1 p.m. in the Truman Veterans Hospital Aud.

MSA FILM: "The Buddy Holly Story" will be shown at 7 and 9:30 p.m. in Ellis Library Aud.

WOMEN'S CENTER: "Teach Your Teachers Well," a panel discussion of surviving in the sexist classroom, will start at 7 p.m. in 1 Gentry Hall.

CONCERT SERIES: Emanuel Ax, piano, and Yo Yo Ma, cello, will perform at 8 p.m. in Jesse Aud. Tickets are \$10; \$9 for students. Call 882-3875.

8 November

EMPLOYEE DEVELOPMENT SEMINAR: "Legal Issues" will be taught by Ken Dean, Law School associate dean, from 9 a.m.-noon in the Training and Development Conference Room, lower level of Lewis Hall. Call 882-4859.

WOMEN'S CENTER: "A Juggling Act," or the problems of balancing parenting, partnering and professionalism, will be discussed at noon in 1 Gentry Hall.

STAFF ADVISORY COUNCIL will meet at 1:15 p.m. in S204 Memorial Union.

CAREER PLANNING AND PLACEMENT CENTER: "How to Job Hunt Successfully" will be held from 3:40-5 p.m. in 110 Noyes Bldg. Call 882-6803.

UNIVERSITY FILM: "Lianna" will be shown at 8 p.m. in Ellis Library Aud. Cost is \$1.

9 November

CAREER PLANNING AND PLACEMENT CENTER: Orientation to CPPC services will be held from 4-5 p.m. in 110 Noyes Bldg. Call 882-6803.

MSA FILM: "Cross Creek" will be shown at 7 and 9:30 p.m. in Middlebush Aud. Cost: \$1.50.

STUDENT ENSEMBLE: University Philharmonic, with piano soloist Raymond Herbert and conductor Edward Dolbashian, will perform at 8 p.m. in Jesse Aud.

CONVENTION: Missouri Music Teachers Association will meet on campus through Nov. 11.

10 November

COMPUTER COURSE: "Children and Computers" (Ages 5-9; each child must be accompanied by an adult) will be taught from 10:30 a.m.-12:30 p.m. at Computer U, 2 Brady Commons. Cost for faculty/staff children is \$20. Call 882-2133.

MSA FILM: "Bachelor Party" will be shown at 7 and 9:30 p.m. in Middlebush Aud. Cost: \$1.50.

VOLLEYBALL: Team will play Oklahoma at 7:30 p.m. in the Hearnes Arena. Cost: \$2 faculty/staff, \$1 students.

11 November

VOLLEYBALL: Team will play Drake at 2 p.m. in the Hearnes Arena. Cost: \$2 faculty/staff, \$1 students.

MSA FILM: "Now, Voyager" and "Blood and Sand" will be shown at 8 p.m. in Memorial Union Aud. Cost: 25 cents.

12 November

WOMEN'S CENTER: "Re-Entry Women" will be discussed by Marci Lower of the New Directions Center at noon in 1 Gentry Hall.

CAREER PLANNING AND PLACEMENT CENTER: "Your Job Interviews: Are You Ready?" will be presented from 3:40-5 p.m. in 110 Noyes Bldg. Call 882-6803.

CONCERT SERIES: Nikolais Dance Theatre will perform at 8 p.m. in Jesse Aud. Tickets are \$12, \$11 for students. Call 882-3875.

STUDENT ENSEMBLE: Horn Ensemble will perform at 8 p.m. in the Fine Arts Recital Hall.

13 November

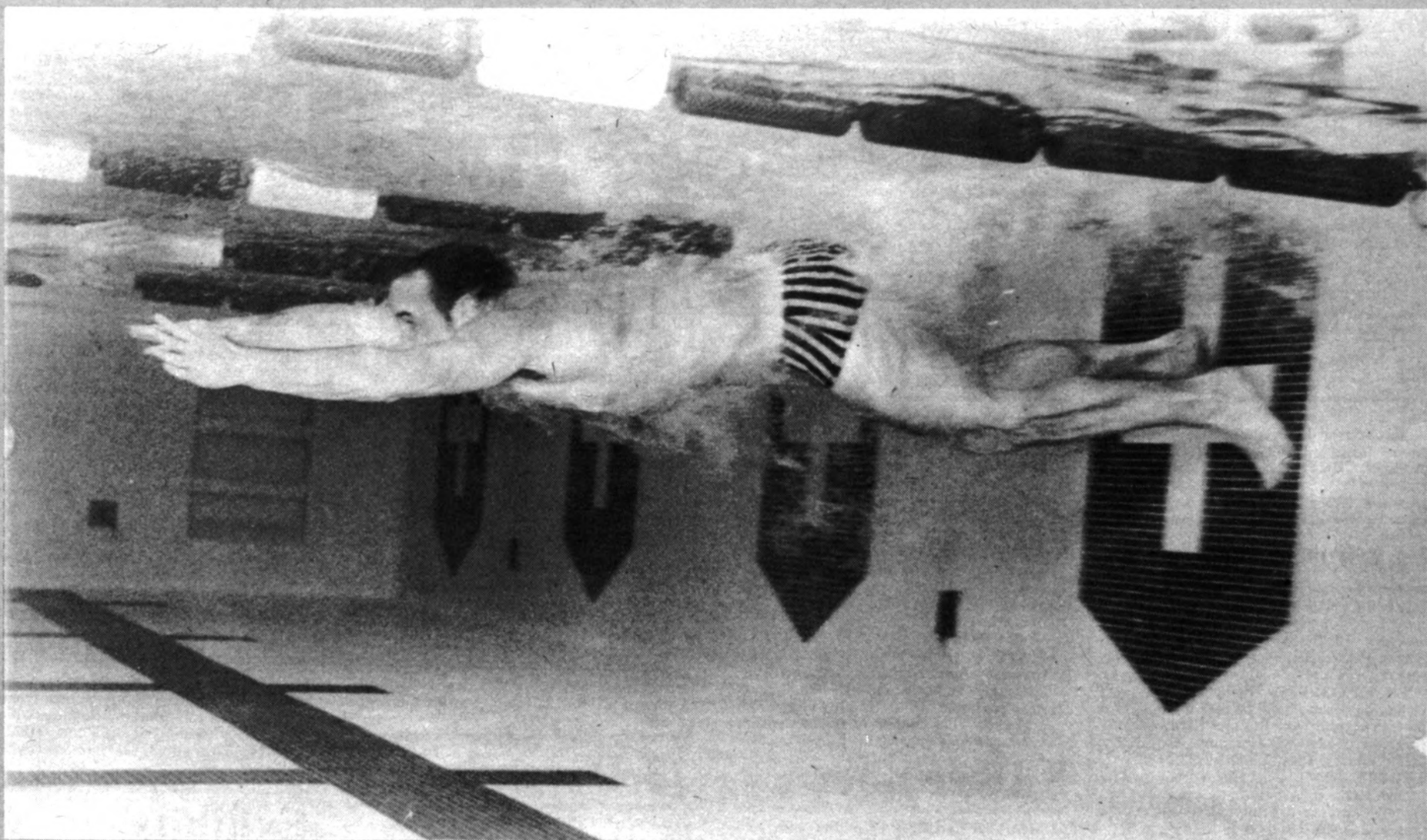
FACULTY LUNCHEON will be held from 11:30 a.m.-1:15 p.m. in Memorial Union's Scott Joplin-Blind Boone Room (N222 and N223). Cost: \$4.50. Call 882-7405 by 5 p.m. Nov. 12.

COMPUTER COURSE: "Unlock d-Base II (Advanced)" will be taught from 2-4 p.m. today and 1-3 p.m. Nov. 15, 19 and 20 at Computer U, 2 Brady Commons. Cost for faculty/staff is \$80. Call 882-2133.

CAREER PLANNING AND PLACEMENT CENTER: "Shopping for a Major?" Learn helpful methods for choosing an appropriate major and career direction from 3:40-5 p.m. in 110 Noyes Bldg. Call 882-6803.

STUDENT ENSEMBLE: Chamber Singers, conducted by Duncan Couch, will perform at 8 p.m. in the Fine Arts Recital Hall.

MSA FILM: "Rules of the Game" will be shown at 8 p.m. in Memorial Union Aud.



Splash

Mizzou swimmers kick off their home meet appearances against Iowa State and Bradley. Spectators may attend the meets, held at the Natatorium, free of charge. See Dec. 8 listing.

14 November

COMPUTER COURSE: "Modeling with Lotus (Intermediate)" will be taught from 10 a.m.-noon today and Nov. 16, 19 and 20 at Computer U, 2 Brady Commons. Cost for faculty/staff is \$80. Call 882-2133.

BLACK STUDIES: "Researching the Black Experience," a panel discussion, will be held from 11:30 a.m.-1 p.m. in S8 Memorial Union. Bring a sack lunch; beverages will be provided.

FACULTY LUNCHEON will be held from 11:30 a.m.-1:15 p.m. in Memorial Union's Scott Joplin-Blind Boone Room (N222 and N223). Cost: \$4.50. Call 882-7405 by 5 p.m. Nov. 13.

PSYCHIATRY: "Conflicting Claims to the Field of Criminology: The Views of Robert Sutherland" will be discussed by John Galliher, professor of sociology, at 1 p.m. in the Truman Veterans Hospital Aud.

CAREER PLANNING AND PLACEMENT CENTER: "Your Resume, Write It Right" will be presented from 3:40-5 p.m. in 110 Noyes Bldg. Call 882-6803.

MSA FILM: "Fort Apache" will be shown at 7 p.m. in Ellis Library Aud.

WOMEN'S CENTER: "Menopause: The Pause that Refreshes?" will be discussed by Ann Stapleton, RN, at 7 p.m. in 1 Gentry Hall.

STUDENT ENSEMBLE: Percussion students will perform at 8 p.m. in the Fine Arts Recital Hall.

MSA FILM: "She Wore a Yellow Ribbon" will be shown at 9:30 p.m. in Ellis Library Aud.

15 November

WOMEN'S CENTER: "Pencils, Paper and Pampers," or women who return to or start college in later years, will be discussed at noon in 1 Gentry Hall.

CAREER PLANNING AND PLACEMENT CENTER: "Developing Your Own Internship or Co-op" will be presented from 3:40-5 p.m. in 110 Noyes Bldg. Call 882-6803.

FACULTY COUNCIL will meet at 3:40 p.m. in S110 Memorial Union.

CAREER PLANNING AND PLACEMENT CENTER: Orientation to CPPC services will be held from 4-5 p.m. in 110 Noyes Bldg. Call 882-6803.

COMPUTER COURSE: "Accounting Software" will be taught from 4-7 p.m. at Computer U, 2 Brady Commons. Cost for faculty/staff is \$30. Call 882-2133.

UNIVERSITY FILM: "Time Stands Still" will be shown at 8 p.m. in Ellis Library Aud. Cost: \$1.

16 November

MSA FILM: "Spinal Tap" will be shown at Middlebush Aud. Cost: \$1.50, 7 and 9:30 p.m.; \$1, midnight.

MEN'S BASKETBALL: Team will play Yugoslavian National Team at 8:10 p.m. in the Hearnes Arena. Cost: \$6, \$5, faculty/staff; \$4.50, \$3.50, students.

APPLICATIONS for faculty foreign travel program are due in the provost's office.

17 November

FOOTBALL: Team will play Kansas at 1:30 p.m. Cost: \$12.50 reserved seat, \$7.50 general admission.

WOMEN'S BASKETBALL: Team will play Cleveland State at 5:30 p.m. in the Hearnes Arena. Cost: \$2 faculty/staff, \$1 students.

MSA FILM: "Silkwood" will be shown at 7 and 9:30 p.m. in Jesse Aud. Cost: \$1.50.

BAND SPECTACULAR 7: Wind Ensemble and Marching Mizzou, directed by Dale Kennedy, Jeffrey Lemke and J. Russell Laib, will perform at 8 p.m. in Jesse Aud.

MSA FILM: "King of Hearts" will be shown at midnight in Jesse Aud. Cost: \$1.

18 November

MSA FILM: "Drums Along the Mohawk" will be shown at 8 p.m. in Memorial Union Aud. Cost: 25 cents.

19 November

STUDENT ENSEMBLE: Concert Chorale, directed by Jesse Wade, will perform at 8 p.m. in the Fine Arts Recital Hall.

20 November

FACULTY LUNCHEON will be held from 11:30 a.m.-1:15 p.m. in Memorial Union's Scott Joplin-Blind Boone Room (N222 and N223). Cost: \$4.50. Call 882-7405 by 5 p.m. Nov. 19.

HOLIDAY: Thanksgiving recess begins at close of day.

21 November

FACULTY LUNCHEON will be held between 11:30 a.m.-1:15 p.m. in Memorial Union's Scott Joplin-Blind Boone Room (N222 and N223). Cost: \$4.50. Call 882-7405 by 5 p.m. Nov. 20.

26 November

WOMEN'S CENTER: Dorothy Haecker, director of the women studies department, will present "Superstars and Status in the Feminist Community" at noon in 1 Gentry Hall.

FACULTY RECITAL: Esterhazy Quartet will perform at 8 p.m. in the Fine Arts Recital Hall.

MEN'S BASKETBALL: Team will play North Dakota at 8:10 p.m. in the Hearnes Arena. Cost: \$6, \$5, faculty/staff; \$4.50, \$3.50, students.

27 November

CAREER PLANNING AND PLACEMENT CENTER: "Overcoming Yesterday's Defeats" will be held from 7-9 p.m. in 110 Noyes Bldg. Call 882-6803.

MSA FILM: "Small Change" will be shown at 8 p.m. in Ellis Library Aud.

28 November

CAREER PLANNING AND PLACEMENT CENTER: Orientation to CPPC services will be held from 4-5 p.m. in 110 Noyes Bldg. Call 882-6803.

WOMEN'S BASKETBALL: Team will play San Diego State at 5:30 p.m. in the Hearnes Arena. Cost: \$2 faculty/staff, \$1 students.

MSA FILM: "A Star Is Born" will be shown at 7 and 9:30 p.m. in Ellis Library Aud.

WOMEN'S CENTER: Jeanne Galliher, coordinator of Reproductive Health Services, will present "Abortion: A Difficult Decision" at 7 p.m. in 1 Gentry Hall.

STUDENT ENSEMBLE: Studio Jazz Ensemble/Jazz Lab Band, directed by Jeffrey Lemke, will perform at 8 p.m. in Jesse Aud.

29 November

WOMEN'S CENTER: Victoria Lewis, a PhD candidate in sociology, will present "The Women's Movement: A Historical Perspective" at noon in 1 Gentry Hall.

CONCERT PREVIEW: Musicologist Michael Budds will review Itzhak Perlman at 7 p.m. in 145 Fine Arts Bldg.

CONCERT SERIES: Itzhak Perlman, violinist, will perform at 8 p.m. in Jesse Aud. Cost: \$17; \$16 for students. Call 882-3875.

UNIVERSITY FILM: "Quartet" will be shown at 8 p.m. in Ellis Library Aud. Cost: \$1.

30 November

MSA FILM: "Terms of Endearment" will be shown at 7 and 9:30 p.m. in Jesse Aud. Cost: \$1.50.

MSA FILM: "Hair" will be shown at midnight in Jesse Aud. Cost: \$1.

1 December

MSA FILM: "Footloose" will be shown in Jesse Aud. Cost: \$1.50, 7 and 9:30 p.m.; \$1 midnight.

APPLICATIONS for Graduate Student Travel Program are due in the provost's office.

2 December

GYMNASTICS: Team will compete with Illinois State at 1:30 p.m. in the Hearnes Arena. Cost: \$2 faculty/staff, \$1 students.

MSA FILM: "Palm Beach Story" and "The New York Hat" will be shown at 8 p.m. in Memorial Union Aud. Cost: 25 cents.

3 December

WOMEN'S CENTER: Donna Phillips, coordinator of the Access Office for Students with Disabilities, will present "A Barrier Free Society?" at noon in 1 Gentry Hall.

COMPUTER COURSE: "PC-DOS/Using the Operating System" will be taught from 2-4 p.m. today and Dec. 5, 7 and 10 at Computer U, 2 Brady Commons. Cost for faculty/staff is \$80. Call 882-2133.

AIR FORCE ROTC: A lieutenant from the foreign technology division at Wright-Patterson Air Force Base will present a Soviet Technology Briefing at 4 p.m. For location, call 882-7621.

MEN'S BASKETBALL: Team will play Morehead State at 8:10 p.m. in the Hearnes Arena. Cost: \$6, \$5, faculty/staff; \$4.50, \$3.50 students.

NOMINATIONS for the Chancellor's Awards for Outstanding Faculty Research and Creative Activity are due in the provost's office.

4 December

EMPLOYEE DEVELOPMENT SEMINAR: "Success with Stress/Stress Management" will be presented by Dean Baxter, staff development specialist, from 10 a.m.-noon today and Dec. 6, 11 and 13 in the Training and Development Conference Room, lower level of Lewis Hall. Call 882-4859.

FACULTY LUNCHEON will be held from 11:30 a.m.-1:15 p.m. in Memorial Union's Scott Joplin-Blind Boone Room (N222 and N223). Cost is \$4.50. Call 882-7405 by 5 p.m. Dec. 3.

CAREER PLANNING AND PLACEMENT CENTER: Orientation to CPPC services will be held from 4-5 p.m. in 110 Noyes Bldg. Call 882-6803.

UNIVERSITY THEATER: "Daughters" will be performed at 8 p.m. in the Rhynsburger Theater. Tickets are \$5 for the general public, \$4.50 for faculty/staff and \$2.50 for students and senior citizens. Call 882-2021.

MSA FILM: "Day for Night" will be shown at 8 p.m. in Ellis Library Aud.

5 December

FACULTY LUNCHEON will be held from 11:30 a.m.-1:15 p.m. in Memorial Union's Scott Joplin-Blind Boone Room (N222 and N223). Cost: \$4.50. Call 882-7405 by 5 p.m. Dec. 4.

PSYCHIATRY: "Behavioral Neurology" will be discussed by David P. Roeltgen, assistant professor of neurology, at 1 p.m. in the Truman Veterans Hospital Aud.

WOMEN'S BASKETBALL: Team will play Southwest Missouri State at 5:30 p.m. in the Hearnes Arena. Cost: \$2 faculty/staff, \$1 students.

WOMEN'S CENTER: Karen Cottledge-Touzeau, UMca director of employee relations and affirmative action, will talk about affirmative action at 7 p.m. in 1 Gentry Hall.

MSA FILM: "Bingo Long Traveling All-Stars and Motor Kings" will be shown at 7 and 9:30 p.m. in Jesse Aud.

UNIVERSITY THEATER: "Daughters." See Dec. 4 listing.

6 December

BOARD OF CURATORS will meet in Columbia through Friday.

WOMEN'S CENTER: Lisa Smith, PhD candidate in counseling psychology and coordinator of Family Adoption and Counseling Services Inc., will talk about adoption at noon in 1 Gentry Hall.

FACULTY COUNCIL will meet at 3:40 p.m. in S110 Memorial Union.

UNIVERSITY THEATER: "Daughters." See Dec. 4 listing.

UNIVERSITY FILM: "Night of the Shooting Stars" will be shown at 8 p.m. in Ellis Library Aud. Cost is \$1.

7 December

OPEN HOUSE: The Office of Visitor and Guest Relations will hold a holiday open house from noon-5 p.m. in 103 Swallow Hall.

MSA FILM: "Racing With the Moon" will be shown at 7 and 9:30 p.m. in Middlebush Aud. Cost: \$1.50.

UNIVERSITY THEATER: "Daughters." See Dec. 4 listing.

NINTH ANNUAL CHANCELLOR'S FESTIVAL OF MUSIC: Choral Union and University Philharmonic will perform "Messiah" at 8 p.m. through Dec. 8 in Jesse Aud. UMC Brass Choir will provide pre-concert music at 7 p.m. Tickets are \$6.

8 December

COMPUTER COURSE: "Children and Computers" (ages 10-14, each child must be accompanied by an adult) will be taught from 10:30 a.m.-12:30 p.m. at Computer U, 2 Brady Commons. Cost: \$80 for faculty/staff. Call 882-2133.

MSA FILM: "The Jungle Book" and "Sherlock Pink" will be shown in Middlebush Aud. Cost: \$1, 1 p.m.; \$1.50, 7 and 9:30 p.m.

WRESTLING: Team will compete with Northern Iowa University at 1:30 p.m. in the Hearnes Fieldhouse. Cost: \$2 faculty/staff, \$1 students.

SWIMMING: Team will compete with Iowa State and Bradley at 2 p.m. in the Natatorium.

WOMEN'S BASKETBALL: Team will play Oral Roberts at 5:30 p.m. in the Hearnes Arena. Cost: \$2 faculty/staff, \$1 students.

UNIVERSITY THEATER: "Daughters." See Dec. 4 listing.

NINTH ANNUAL CHANCELLOR'S FESTIVAL OF MUSIC: "Messiah." See Dec. 7 listing.

MEN'S BASKETBALL: Team will play Tennessee Tech at 8:10 p.m. in the Hearnes Arena. Cost: \$6, \$5, faculty/staff; \$4.50, \$3.50, students.

9 December

UNIVERSITY THEATER: "Daughters." See Dec. 4 listing.

MSA FILM: "Key Largo" and "Sir Arthur Conan Doyle" will be shown at 8 p.m. in Memorial Union Aud. Cost: 25 cents.

10 December

STUDENT ENSEMBLE: Women's Chorus and Concert Chorale, directed by Gregory Fuller, will perform at 8 p.m. in the Fine Arts Recital Hall.

MEN'S BASKETBALL: Team will play Tennessee at 8:10 p.m. in the Hearnes Arena. Cost: \$6, \$5, faculty/staff; \$4.50, \$3.50, students.

11 December

COMPUTER COURSE: "Maximizing Lotus Using Macros (Advanced)" will be taught from 10 a.m.-noon today and Dec. 13, 17 and 19 at Computer U, 2 Brady Commons. Cost: \$80 for faculty/staff. Call 882-2133.

UNIVERSITY CLUB: The December luncheon meeting will be held at noon in Memorial Union's Benton-Bingham Room (N214-N215).

FACULTY LUNCHEON will be held from 11:30 a.m.-1:15 p.m. in Memorial Union's Scott Joplin-Blind Boone Room (N222 and N223). Cost: \$4.50. Call 882-7405 by 5 p.m. Dec. 10.

12 December

STOP DAY.

EMPLOYEE DEVELOPMENT SEMINAR: "Employee Relations: Issuing Disciplinary Action and Handling Employee Grievances" will be taught by Karen Cottledge-Touzeau, director of affirmative action/employee relations, Roland Juhnke, personnel director, and Susan Bliss, manager of training and development, from 9 a.m.-4 p.m. in the Training and Development Conference Room, lower level of Lewis Hall. Call 882-4859.

COMPUTER COURSE: "Plan, Compare and Evaluate Your Computer Needs" will be taught from 11 a.m.-1 p.m. today and Dec. 14 at Computer U, 2 Brady Commons. Cost: \$40 for faculty/staff. Call 882-2133.

BLACK STUDIES: "The Black Administrator in Higher Education" will be discussed by Thomas Jenkins, president of Lincoln University, from 11:30 a.m.-1 p.m. in S8 Memorial Union. Bring a sack lunch; beverages will be provided.

FACULTY LUNCHEON will be held from 11:30 a.m.-1:15 p.m. in the Memorial Union's Walt Disney Room (N208). Cost: \$4.50. Call 882-7405 by 5 p.m. Dec. 11.

MSA FILM: "Jesus Christ Superstar" will be shown at 7 and 9:30 p.m. in Ellis Library Aud.

13 December

FORESTRY CLUB CHRISTMAS TREE SALE will be from 9 a.m.-8 p.m. on the east side of Memorial Stadium under the stands.

WOMEN'S CENTER: Holiday open house will be held from 9 a.m.-9 p.m. in 1 Gentry Hall.

STAFF ADVISORY COUNCIL will meet at 1:15 p.m. in S204 Memorial Union.

14 December

FORESTRY CLUB CHRISTMAS TREE SALE will be from 9 a.m.-8 p.m. on the east side of Memorial Stadium under the stands.

WOMEN'S CENTER: Holiday open house will be held from 9 a.m.-5 p.m. in 1 Gentry Hall.

MSA FILM: "Breakin'" will be shown at 7 and 9:30 p.m. in Jesse Aud. Cost: \$1.50.

WOMEN'S BASKETBALL: UMC, Georgia, Texas Tech and Brigham Young will play in the Mid-America Classic through Dec. 15 in the Hearnes Arena. Cost: \$3 faculty/staff, \$1.50 students.

MSA FILM: "Tron" will be shown at midnight in Jesse Aud. Cost: \$1.

APPLICATIONS for promotion or tenure are due in the provost's office. Applications must be submitted through the appropriate divisional dean.

15 December

FORESTRY CLUB CHRISTMAS TREE SALE will be from 9 a.m.-8 p.m. on the east side of Memorial Stadium under the stands.

MSA FILM: "Scarface" will be shown at 7 and 9:30 p.m. in Jesse Aud. Cost: \$1.50.

16 December

FORESTRY CLUB CHRISTMAS TREE SALE will be from 9 a.m.-8 p.m. on the east side of Memorial Stadium under the stands.

MSA FILM: "Miracle on 43rd Street" and "Mtn November 30, 1929" will be shown at 8 p.m. in Memorial Union Aud. Cost: 25 cents.

18 December

FACULTY LUNCHEON will be held from 11:30 a.m.-1:15 p.m. in Memorial Union's Scott Joplin-Blind Boone Room (N222 and N223). Cost: \$4.50. Call 882-7405 by 5 p.m. Dec. 17.

19 December

FACULTY LUNCHEON will be held from 11:30 a.m.-1:15 p.m. in Memorial Union's Scott Joplin-Blind Boone Room (N222 and N223). Cost: \$4.50. Call 882-7405 by 5 p.m. Dec. 18.

PSYCHIATRY: "An Update on Antidepressant Therapies" will be presented by Sheldon Preskorn, professor of psychiatry and psychopharmacology at Washington University in St. Louis, at 1 p.m. in the Truman Veterans Hospital Aud.

FALL SEMESTER ends at 5 p.m.
AIR FORCE ROTC: Fall Semester Commissioning will be held at 7 p.m. in the Nursing School Bldg. Aud.

20 December

FACULTY COUNCIL will meet at 3:40 p.m. in S110 Memorial Union.

26 December

FACULTY LUNCHEON will be held from 11:30 a.m.-1:15 p.m. in Memorial Union's Scott Joplin-Blind Boone Room (N222 and N223). Cost: \$4.50. Call 882-7405 by 5 p.m. Dec. 21.

Exhibits

FINE ARTS GALLERY: "Contemporary Art of Bali" will be displayed through Sept. 14. Hours are 9 a.m.-3 p.m. weekdays and 2-4 p.m. Sunday.

FINE ARTS GALLERY: Photographs by Sybil Miller and Mark Goodman will be exhibited Sept. 16 through Oct. 5. Hours are 9 a.m.-3 p.m. weekdays and 2-4 p.m. Sunday. Opening reception will be from 2-4 p.m. Oct. 16.

BRADY COMMONS GALLERY: Photographs by Oliver Schuchard from the book "Two Ozark Rivers" will be displayed Sept. 24 through Oct. 5. Hours are 10 a.m.-5 p.m. weekdays.

STATE HISTORICAL SOCIETY: Thomas Hart Benton's paintings from "The Year of Peril" series and lithograph illustrations from Lynn Riggs' "Green Grow the Lilacs" will be displayed through Sept. 24 at the State Historical Society of Missouri, east wing of Ellis Library. Hours are 8:30 a.m.-4 p.m. weekdays.

STATE HISTORICAL SOCIETY: "Editorial Cartoons: Past Presidential Campaigns" will be displayed September through November at the State Historical Society of Missouri, east wing of Ellis Library. Hours are 8:30 a.m.-4 p.m. weekdays.

FINE ARTS GALLERY: A sabbatical exhibition of Robert F. Bassabarger will be displayed Oct. 7 through Oct. 26. Hours are 9 a.m.-3 p.m. weekdays and 2-4 p.m. Sunday. Opening reception will be from 2-4 p.m. Oct. 7.

FINE ARTS GALLERY: "UMC Faculty Art Show: New Works" will be displayed Oct. 28 through Nov. 21. Hours are 8 a.m.-3 p.m. weekdays and 2-4 p.m. Sunday. Opening reception will be from 2-4 p.m. Oct. 28.

FINE ARTS GALLERY: "BFA Students Show" will be displayed Nov. 27 through Dec. 7. Hours are 9 a.m.-3 p.m. weekdays and 2-4 p.m. Sunday. Opening reception will be from 2-4 p.m. Dec. 2.

FINE ARTS GALLERY: "MFA Candidate Show: Kristy Morris" will be displayed Dec. 9 through Dec. 14. Hours are 9 a.m.-3 p.m. weekdays and 2-4 p.m. Sunday. Opening reception will be from 2-4 p.m. Dec. 9.

University Libraries
University of Missouri

Digitization Information Page

Local identifier MizzouWeekly(print)

Source information

Format Newspaper
Content type Text with images
Source ID Duplicate copies University Archives weeded out
Notes

Capture information

Date captured July-December, 2022
Scanner manufacturer Plustek OpticBook
Scanner model A300 Plus
Scanning system software Book Pavilion
Optical resolution 600 dpi
Color settings 8 bit grayscale for majority of pages;
 24 bit color for color illustrations/portraits/photographs
File types tiff
Notes

Derivatives - Access copy

Compression Tiff: LZW compression
Editing software Adobe Photoshop 2022
Resolution 600 dpi
Color same as captured
File types pdf created from tiffs
Notes Images cropped, straightened, and brightened.