

# MIZZOU WEEKLY

University of Missouri-Columbia

Jan. 30, 1987

## Colorful, comprehensive

In Mizzou Weekly's first 20-pager, you'll find "Unearth the treasures," an extensive listing of winter semester activities, plus a detailed guide to Mizzou's master plan. Both special sections feature color illustrations.

## UM leaders back CBHE

*President and chancellors join in supporting CBHE recommendations.*

The University's president and four chancellors are firmly together in supporting the 1987-88 appropriations recommendation of the Coordinating Board for Higher Education for the operating budget, reports Mizzou interim Chancellor Duane Stucky. "The funding for each of the four University campuses as proposed by the coordinating board is greatly needed," Stucky says.

The CBHE, a state agency, receives appropriations re-

quests from all public universities and colleges in Missouri. After reviewing the requests and conducting public hearings, the coordinating board makes non-binding recommendations to the governor regarding state funding for each institution. "We are cooperating with all other Missouri public colleges and universities in making a unified appeal to the General Assembly this year seeking approval for the CBHE's recommendation. Since we appear to be unified, I am extremely optimistic that our goal will be accomplished," says UM President C. Peter Magrath.

The CBHE recommends that the University receive a \$259.89 million state appropriation for next year, an increase of \$29.52 million compared with 1986-87. The CBHE recommendation restores for 1987-88 the 3 percent that was withheld from the state appropriation this year.

The CBHE proposal represents an 8.13 percent increase over the University's 1986-87 state appropriation received for general purposes. In addition, the CBHE recommends additional funding for targeted program improvements. For the Columbia campus, these are Food for the 21st Century, \$3 million; molecular biology, \$1.7 million; writing across the curriculum, \$345,000; equipment challenge grants, \$1.96 million; and engineering equipment,

\$888,000. The coordinating board also recommends \$1.5 million for challenge grants for endowed faculty chairs at UM, largely for Mizzou's Journalism School.

Gov. John Ashcroft recommends a \$246.25 million appropriation for UM; the University requested \$261.74 million. Concerning Mizzou programs, the governor's recommendation includes \$750,000 for Food for the 21st Century; \$250,000 for molecular biology; \$345,000 for writing across the curriculum; \$444,000 for engineering equipment; and no funds for challenge grants.

The recommendation for capital appropriations is another matter, Stucky reports. Neither the CBHE nor Gov. Ashcroft recommend significant capital appropriations for the University. "All campuses of the University have severe space deficiencies; they must be addressed if we are to provide quality education." The University's capital appropriations request is considered separately from the operating budget.

Subcommittees in both the Missouri house and senate were expected to hold hearings on the operating budget this past week. Lawmakers will develop a joint legislative appropriation for the governor's consideration this summer.

## Confused by W-4?

Some 2,000 Mizzou employees have figured out the new 1987 W-4 forms and returned them to the Payroll Office, says Jim Robinson, manager of Cashiers-Payroll and Student Loans. "I think the articles in the media are making the forms seem harder than they really are," Robinson says.

But, if you're bewildered by the new forms, you're not alone. Robinson says employees have been calling the Payroll Office for help, and he urges those with questions to contact the office at 882-6548, a local tax center or their personal accountant.

Robinson advises employees to complete the form and return it to the Payroll Office, 16 Jesse Hall, as soon as possible because it directly affects the amount of withholding tax. The forms must be returned by Oct. 1, 1987, but Robinson's office will be contacting employees who do not return the form by August 1987.

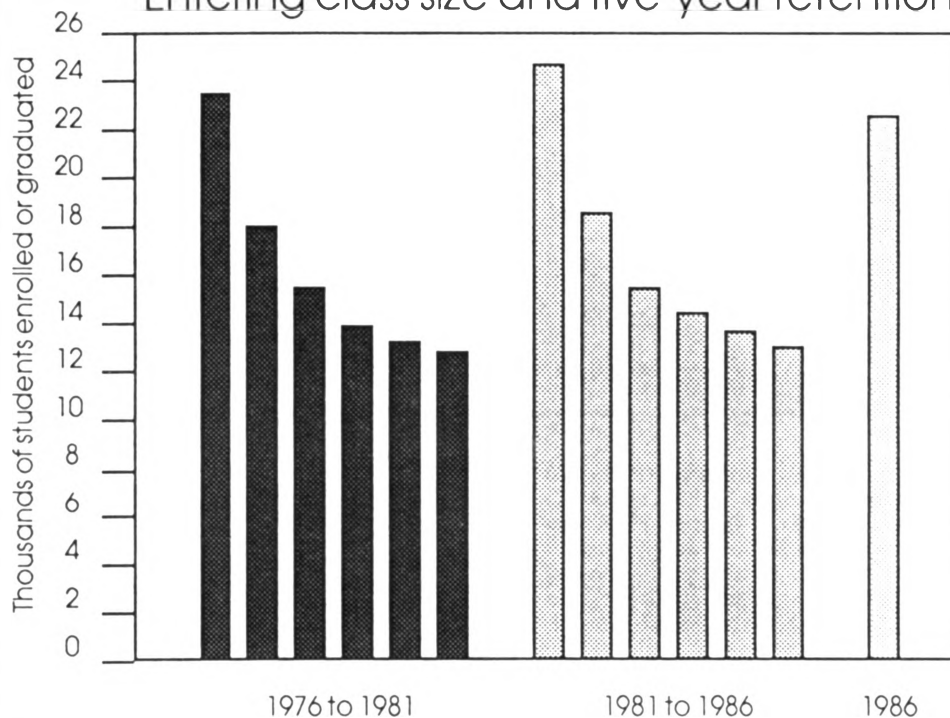
Here are some general guidelines for University employees to follow:

- A single person whose only income is from the University and who does not itemize deductions can claim themselves plus the special withholding allowance of one, explained on the W-4 worksheet, to equal two allowances on the W-4 form. "This group should break-even when figuring their income taxes for 1987," Robinson says.

- A married couple filing jointly with only one income can claim their spouse, any dependents and the special withholding allowance. This group also should "break-even" on their income taxes for 1987.

- If you fall into another category, Robinson suggests that you follow the worksheet that came with the new W-4s. "If you follow the worksheet, most of your questions will be answered."

Entering class size and five-year retention



## Retention aids proposed

*Effective teachers, advisers and support services equal successful retention of students.*

Jim Irvin will agree that the retention plan he and retention committee members have developed seems a little obvious.

To keep students at Mizzou, what's needed is a supportive atmosphere in which teachers are interested and interesting, advisers are knowledgeable and support services are effective. "Those should be everyday, common-sense responses for faculty and staff, but it's not the case," says Irvin, director of Counseling Services and reten-

tion committee chair. "Faculty and staff members have other things to attend to, and sometimes a student's needs get lost in the shuffle."

The lack of attention dealt to some students may be the cause of some disturbing statistics. More than 50 percent of the students who leave Mizzou do so during their first year and never return. And the majority of those students will either decide to leave, or leave, during the first six weeks of the semester.

Statistics like that led Norman Moore, vice chancellor for Student, Personnel and Auxiliary Services, in 1983 to set up the retention committee to study the problem. Committee members include Roger Fisher, director of Residential Life; Suzanne Holland, director of Student Development and assistant vice chancellor for Student Services; Irvin; John Jones, director of the Academic Assistance Program; Diane Oerly,

director of Institutional Research and Planning; Ginny Booker, assistant to the vice chancellor for Student, Personnel and Auxiliary Services; Gary Smith, director of Admissions and Registrar; and Bruce Storey, a graduate assistant.

"Since 1983, we've been attempting to mobilize the campus toward a retention effort," Irvin says. But what does all this talk of retention mean? "In a technical sense it's retaining students through graduation at the University. But the means are just as important as the ends. It's also a process comprised of all those things that we are or could be doing to assure the successful completion of an academic career."

The group is quick to point out that several factors can interrupt a student's academic career. "It's a misconception of retention that we are going to retain students with bad grades," Storey says. "More than 50 percent of the students who leave have a 2.0 or above grade point average." Homesickness, a feeling that they don't fit in and financial problems are among the myriad of reasons students leave Mizzou.

"The first week is critical. The student is trying to figure out how he or she fits in. They're battling internal conflicts and measuring to what extent Mizzou makes them feel they made the right choice," Irvin says.

The committee hopes to raise awareness of retention on campus by sensitizing faculty and staff members to the fact that they can make a difference. They have met with Faculty Council, Staff Advisory Council and the Graduate Professional Council in hopes that those groups will carry the message to their peers.

Other group efforts include developing a survey last spring to measure faculty and staff members' awareness of campus retention efforts, as well as continuing to analyze reams of enrollment and retention statistics.

"It is most disturbing to me that as a large University we have trouble personalizing ourself during those first pressurized weeks when students come to us en masse," Irvin says. "It is probably impossible to do everything we could do given our circumstances, but if faculty and staff members could be sensitive to the issues it may help."

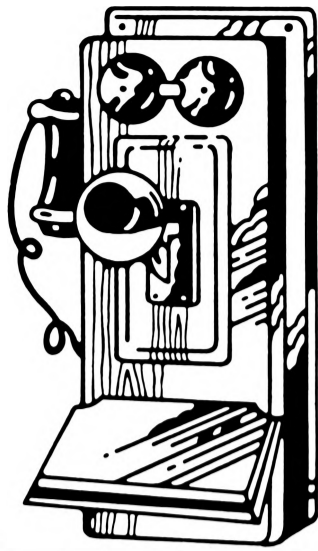
"Just as we work to attract those students here, we should work to keep them here. It may make the difference for a student."

### KEEP CALLS COMING

If you have moved or have a new telephone number because of the new telecommunications system, the Telecommunications office needs your help to keep its online directory system up to date.

Keep your whereabouts current by completing a Personal Data Form, which provides information for the directory. Outdated PDF's result in an outdated directory.

PDF's should be sent to Payroll Office, 16 Jesse Hall, for Mizzou employees; to Personnel Information Systems, 107 Heinkel Building, for UM employees; and to Payroll and Central Processing, 1W41 Hospital DC.59.10, for hospital employees.



### FUTURE STUDENTS INVITED TO GAME

All instate high-school seniors who have been accepted to the University will be admitted free to the Feb. 1 Mizzou basketball game against Kansas State.

Their families may buy tickets to the game at the student rate.

Athletic Director Jack Lengyel, in cooperation with admissions Director Gary Smith, arranged the promotion to welcome the future freshmen to campus.

### BUDGET HEARING SCHEDULED

An open hearing on the campus' 1988-89 budget request is scheduled from 10 to 11:15 a.m. Feb. 6 in N214-215 Memorial Union.

All faculty and staff are encouraged to attend.

### MEET MIZZOU BOOTH OPENS

A Meet Mizzou booth, where visitors can obtain general information about the campus, is located in the Jesse Hall lobby.

The booth was recommended by the student recruitment task force to greet and serve prospective students and their families, and other guests. It is operated by Visitor and Guest Relations, and staffed by members of the student Mizzou Tour Team.

Plans call for the booth eventually to be open from 9 a.m. to 4 p.m. weekdays and from 9 a.m. to noon on Saturdays.

## Magrath visits council

UM President C. Peter Magrath and interim Chancellor Duane Stucky visited Faculty Council Jan. 22.

"This kind of communication with faculty leaders is important to me and extremely useful," said Magrath, who commented on a variety of subjects. Regarding the chancellor search, he said, "I'm optimistic that we can fill this position with an outstanding individual." Magrath commended the search committee, which he said submitted excellent recommendations.

On the University's 1987-88 budget, Ma-

grath said, "The recommendations of the Coordinating Board for Higher Education are very positive for the University." (See related story on Page 1.) The governor's recommendations are positive in terms of the base budget, Magrath added, but "on the program side we fare less well." Magrath said he would not favor increasing the amount for targeted programs at the expense of the base budget.

If the University's state appropriation is similar to the CBHE recommendation, Magrath said he expects to see some "signifi-

cant if not dramatic" progress in faculty salaries. But for capital improvements, the president said the recommended increase was small.

In response to a question about the status of the College of Veterinary Medicine, Magrath said, "I think we'll be able to come up with some good proposals to deal with the situation but not at the expense of other parts of the University." A recent report by an independent firm said the college needed major renovation and expansion.

On another subject, Magrath said that the University's long-range plan adopted in 1984 includes objectives related to undergraduate curriculum and assessment. The campuses presented assessment plans at the

Board of Curators Jan. 29-30 meeting.

In council business, the representatives voted to support the alcohol policy review task force report. One recommendation of the report provides for student organizations to be held responsible, as organizations, for violations of specified laws and regulations.

The council narrowly defeated a motion that called for the director of admissions to evaluate the admissibility of student-athletes before they signed letters of intent to attend Mizzou. Although some members said the measure would protect both the student-athlete and the University, others were concerned that the purpose of the motion was unclear.



## Newsletter debuts

The first issue of Faculty Forum, a newsletter from Faculty Council, was printed this week. The newsletter, which will be published after each council meeting, will be sent in bulk to departments for distribution to faculty members, as well as to deans, department chairs and directors.

"This newsletter is intended to fill a gap in communications between Faculty Council members and the faculty they represent," says Gordon Kimber, professor of agronomy and chair of the council's communications committee. "It is not the intent to supplant or, in any way, supersede Mizzou Weekly but to supplement that publication with items that are of particular concern to the faculty in the conduct of the academic activities of this campus."

The first issue contained a column by

Kimber, approved minutes, meeting highlights, and members' names and phone numbers.

Reports and studies commissioned by the council also will be published. When reports are too long to print in full, summaries will be published or copies of the reports will be made available upon faculty request. "In addition we would appreciate all the advice and assistance we can get for additional ideas and items for inclusion," Kimber says.

Faculty may send ideas or comments to Kimber at 220 Curtis Hall or call 882-7017. Mildred Robertson, an information specialist in Publications and Alumni Communication, will produce the newsletter. Her telephone number is 882-5919.

## Staff review request process

Norman Moore, vice chancellor of Student, Personnel and Auxiliary Services, visited the Jan. 22 Staff Advisory Council meeting to answer questions about the campus.

Council members asked questions for more than an hour. Opening the Q&A was a review of the steps a benefit request must go through to be approved by the University. Moore told the group that a request must work its way through the campus level; the Administrative Management Council, a system committee; and the central administration officers before it can be presented to the Board of Curators for final approval.

"It is my own personal observation that this process generally takes about 22 months to complete," Moore said. A benefit request can be stopped at any level.

Talk of benefits raised the question of educational assistance for employees' dependent children. Moore said the last time the request was presented, it was denied as not equitable for all employees. "Not every employee has children. All employees would not benefit from such a proposal," Moore said. After further study, the council plans to propose the request again.

Moore also reviewed the University's return to food service at the Memorial Union and Brady Commons, and the recent purchase of Mark Twain Residence Hall. Moore said construction of the parking garages was on time and should be completed by mid-May.

In other business, Barbara Olson Smith, co-chair of the staff benefits and development committee, reported on the Jan. 21 meeting of staff council representatives from Kansas City, St. Louis and Columbia campuses. The group is developing benefit proposals. Chris Lucas, professor of higher and adult education and foundations, represented Faculty Council at the meeting. Olson Smith says her committee decided to work with the other campuses so they could present a consistent, systemwide voice when presenting their proposals. The Rolla campus was not represented at the meeting because it doesn't have a Staff Council.

The group's first effort will be a survey, developed by Lucas and David Leuthold, professor of political science, to pinpoint faculty and staff support for educational benefits for dependent children.

## Organization strategies

His title alone implies this man is out to make Mizzou the best it can be. Jim Tompras went to work Jan. 5 as the Columbia campus' first organizational development specialist.

In the newly created position within Personnel Services, Tompras will work with departments in need of reorganization. "If a department feels a need to make changes for whatever reason, it can call me for assistance," he says. "My role is to help a group improve its functioning capability and to upgrade its performance behavior. Each organization has its own quirks. They all require a different strategy."

Tompras hopes to establish a strong link between his office and the Human Resource Development office, which offers employee training programs. "One of their courses could become an important part of

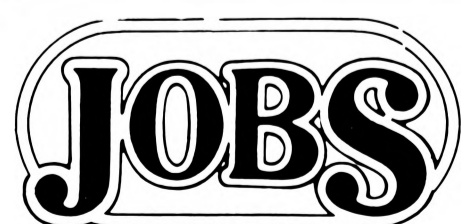
the reorganization strategy," he says.

Tompras says Toward Excellence, the Board of Curators' long-range plan, has further created a need for a position like his. "The curators and the administration have established a strategic plan to move in a particular direction," he says. "I can help administrators and managers to achieve that in as quick a way as they can with the least amount of problems. My specialty is to help people deal with change."

Before coming to Mizzou, Tompras was the St. Louis region manager of the organization/personnel development department at Crown Zellerbach Co., a pulp and paper conglomerate based in San Francisco.

Tompras works with departments on a request basis. To set up an appointment call 882-9428.

**LEARN TO READ MUSIC**  
 Beginning Piano Class for Adults  
 Mondays 5:30-7:30 p.m.  
 Feb. 2-April 27  
 For information call:  
**Extension Teaching**  
 (314) 882-3598



Recorded listings of new campus and UM job openings are available 24 hours a day. For professional vacancies call 882-2345; for secretarial/clerical positions call 882-2041; and for technical/service/main-

tenance openings call 882-2916.

Anyone with CMS computer access may view campus and UM vacancies by logging on to CMS and typing help jobs. If your terminal is not linked to the campus disk, type link UMCCMS 191 192 RR, enter, access 192 D, enter, help jobs.

For more information or to apply for a job, contact Personnel Services, 201 S. Seventh St., west entrance, at 882-7976.

For information on job openings at University Hospital and Clinics, contact the hospital Personnel Department, 1W42 UMCHC, telephone 882-8186.



# 1839-1989 A Sesquicentennial Plan

Mizzou's master plan is an ongoing process that began in 1980 to study the use of campus land and buildings for optimum efficiency and aesthetic appeal. It is called the Sesquicentennial Plan in honor of the University's 150th anniversary in 1989.

This supplement summarizes the plan's accomplishments, shown on the map inside, and the next steps in the process. Readers' comments are welcome—feel free to write in the margins and return the supplement to the campus planning committee, c/o Professor Osmund Overby, chair, 109 Pickard Hall.

A videotape on the Sesquicentennial Plan may be borrowed by calling 882-3387.

"Comments and reactions have helped to shape the plan," says Jack Robinson, consultant to the campus administration who works with the campus planning committee, which includes faculty, staff and students. The committee advises the vice chancellor for Administrative Services on campus planning issues.

In forming the plan, several public hearings were held for the campus and community. They included slide shows and status reports on space needs and specific projects. In addition, progress reports are presented annually in open meetings. "New ideas always are welcome," Robinson says.

He describes the master plan as building on Mizzou's traditional campus to create a unified, efficient environment that is both inviting to students and conducive to teaching, research and support services. It also seeks to strengthen ties of cooperation between the campus and neighboring Columbia.

"Building projects and adequate parking are under constant study and modification," Robinson says. "For a successful total campus, however, they should be developed within a strong, handsome sequence of major open spaces and of major cross-campus pedestrian ways. Mizzou's system of quadrangles, courtyards, malls and playing fields can be linked, improved and extended to help unify the total campus."

The general objectives for the plan (see box) are intended to help test the plan concepts and proposals, and specific



Academic Hall was the focus of the campus in 1875.

Reproduced by permission of University of Missouri Archives

## THE PLAN BUILDS ON TRADITION TO CREATE AN INVITING CAMPUS.

projects as they are developed. The objectives, Robinson notes, are consistent with the Board of Curators' 1981 policy statement, which includes as a goal "to maintain and make more efficient and attractive the University's physical plant."

The objectives have helped to shape projects recently completed and those now in process. "The interesting story is not in any one project, but in the way in which they reinforce each other," Robinson says. With the plan's overall guidance, he says, campus improvements should blend in with their surroundings so well that they will appear to have been there from the start.

Robinson hopes that the sesquicentennial will provide an impetus for improving the plan and for completing projects.

"The anniversary is quickly approaching, but it is also far enough away to permit us to be a bit visionary. Nevertheless, all the suggestions are intended to be consistent with University assumptions for limited funding, a limited construction program, a stable population and a permanent campus of great importance."

A Sesquicentennial Plan drawing appears on the next two pages.

## PLANNING PRINCIPLES

- **PRIDE OF THE STATE:** visual and functionally expressive of the importance of this campus to the state of Missouri
- **RECRUITMENT-RETENTION AID:** environmental qualities which help attract and hold faculty, staff and students
- **STRONG "SENSE OF PLACE":** distinctive and memorable to entering freshmen and visiting scholars alike
- **UNIFIED TOTAL CAMPUS:** the totality of the campus revealed and clarified to all observers, dominating component parts
- **DIVERSITY WITHIN THE UNITY:** clarifying and expressing the variety of activities, of people, of inheritance from the past
- **PEDESTRIAN DOMINANCE:** visual and functional pedestrian dominance over vehicles within the campus
- **VEHICLES RECOGNIZED:** the needs of an automobile-oriented society accommodated as gracefully as possible without being permitted to dominate pedestrians within the campus
- **FUNCTIONAL ADEQUACY:** each activity of the campus with facilities appropriate for its purposes; not constrained, not lavish, but adequate
- **PROXIMITIES ENHANCED:** activities located close to each other whenever required or potentially beneficial
- **EXPANSION OR RELOCATION PROVIDED:** clear identification of at least one logical way for expansion (or relocation) of an activity, should such a change be desirable
- **RESPONSIVE TO CLIMATE:** careful design of building and of landscape so as to serve as models for others in similar climates
- **RESPECT FOR INHERITANCE:** accenting and continuing the topographic and architectural history of the best parts of the campus
- **RESPECT FOR NEIGHBORS:** avoiding adverse impacts and cooperating wherever possible to achieve civic objectives



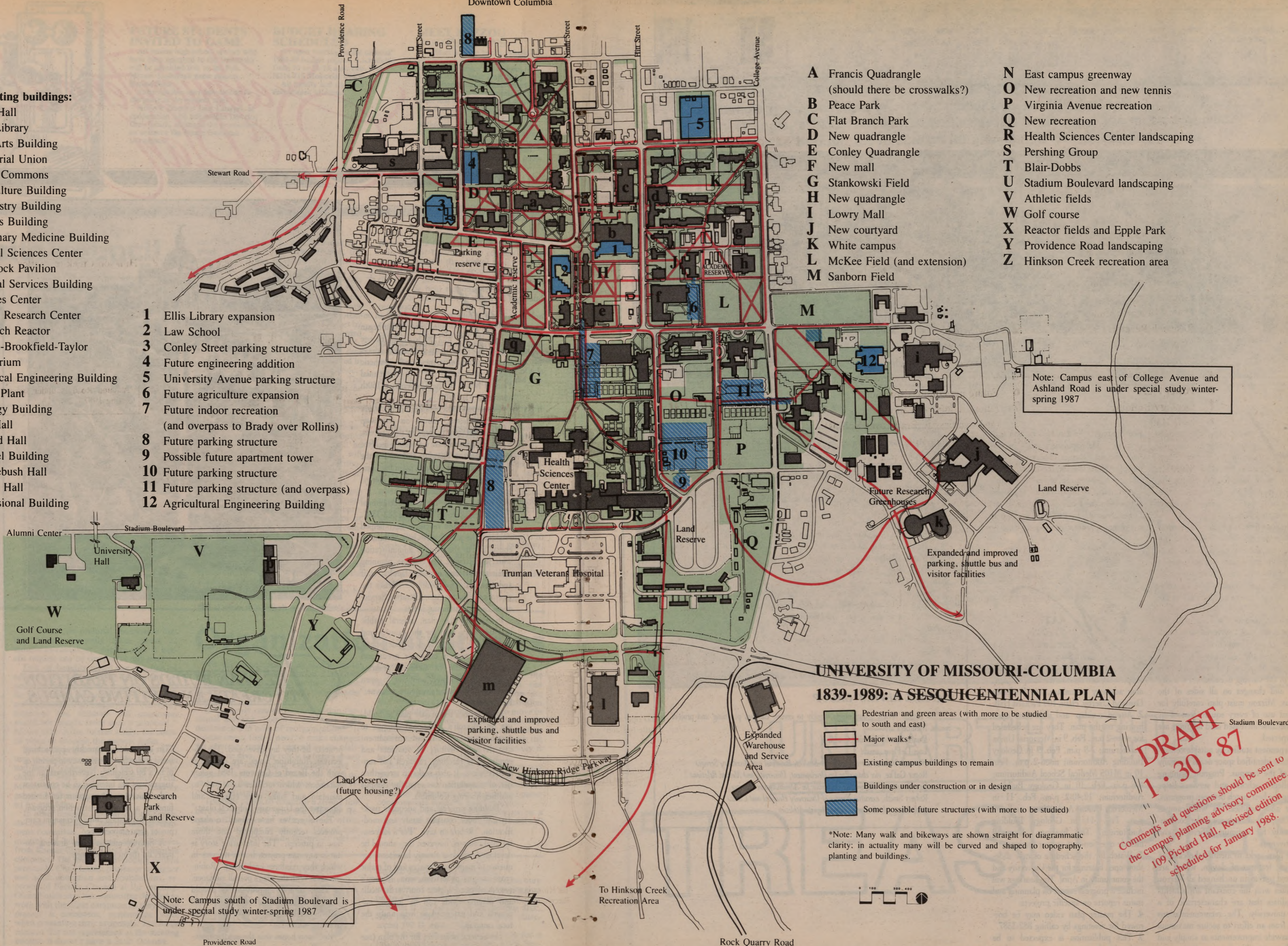
Downtown Columbia

Some existing buildings:

- a Jesse Hall
- b Ellis Library
- c Fine Arts Building
- d Memorial Union
- e Brady Commons
- f Agriculture Building
- g Chemistry Building
- h Physics Building
- i Veterinary Medicine Building
- j Animal Sciences Center
- k Livestock Pavilion
- l General Services Building
- m Hearnes Center
- n Dalton Research Center
- o Research Reactor
- p Dutton-Brookfield-Taylor
- q Natatorium
- r Electrical Engineering Building
- s Power Plant
- t Geology Building
- u Neff Hall
- v Pickard Hall
- w Heinkel Building
- x Middlebush Hall
- y Waters Hall
- z Professional Building

- 1 Ellis Library expansion
- 2 Law School
- 3 Conley Street parking structure
- 4 Future engineering addition
- 5 University Avenue parking structure
- 6 Future agriculture expansion
- 7 Future indoor recreation (and overpass to Brady over Rollins)
- 8 Future parking structure
- 9 Possible future apartment tower
- 10 Future parking structure
- 11 Future parking structure (and overpass)
- 12 Agricultural Engineering Building

- A Francis Quadrangle (should there be crosswalks?)
- B Peace Park
- C Flat Branch Park
- D New quadrangle
- E Conley Quadrangle
- F New mall
- G Stankowski Field
- H New quadrangle
- I Lowry Mall
- J New courtyard
- K White campus
- L McKee Field (and extension)
- M Sanborn Field
- N East campus greenway
- O New recreation and new tennis
- P Virginia Avenue recreation
- Q New recreation
- R Health Sciences Center landscaping
- S Pershing Group
- T Blair-Dobbs
- U Stadium Boulevard landscaping
- V Athletic fields
- W Golf course
- X Reactor fields and Epple Park
- Y Providence Road landscaping
- Z Hinkson Creek recreation area



Note: Campus east of College Avenue and Ashland Road is under special study winter-spring 1987

Note: Campus south of Stadium Boulevard is under special study winter-spring 1987

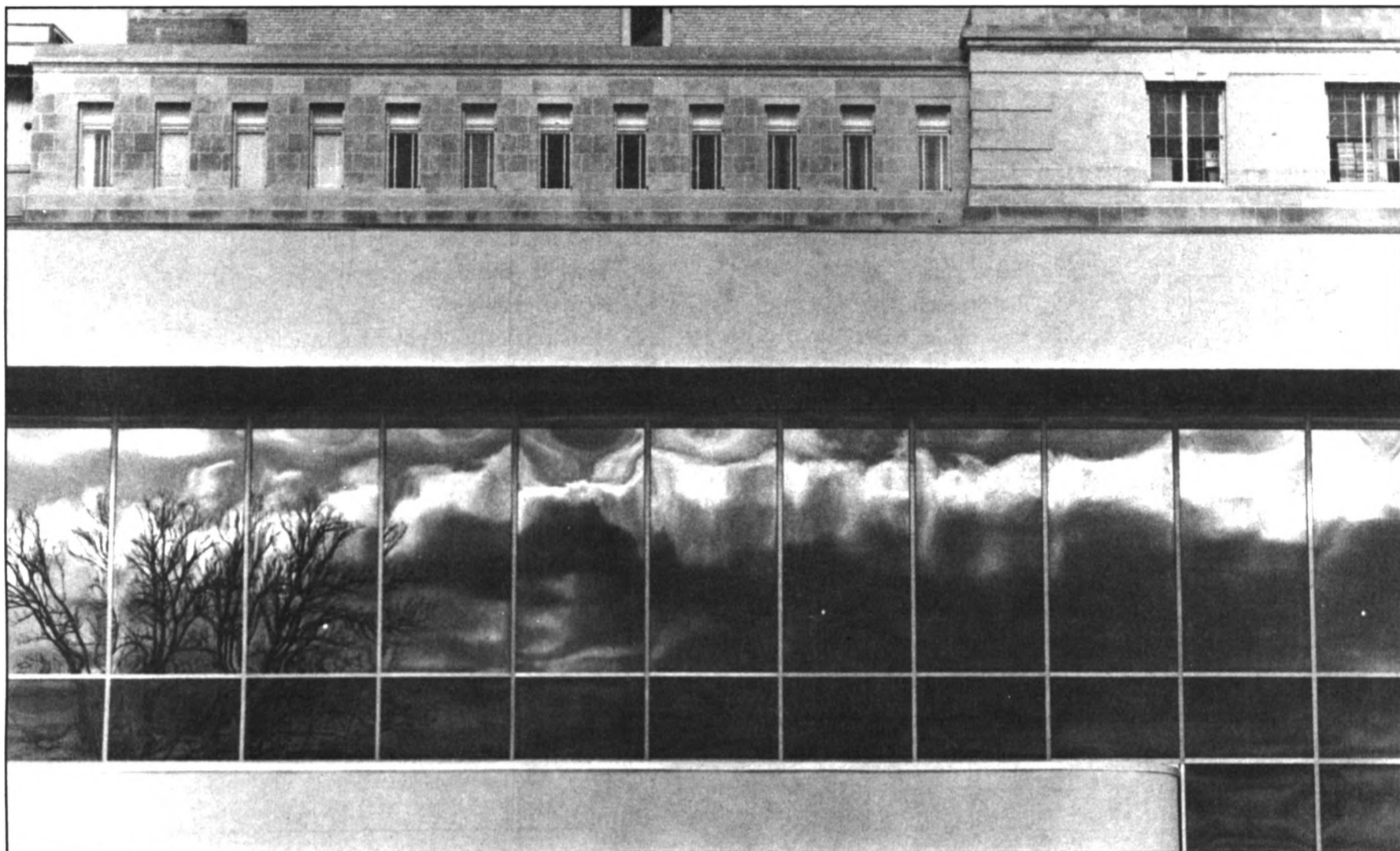
UNIVERSITY OF MISSOURI-COLUMBIA  
1839-1989: A SESQUICENTENNIAL PLAN

- Pedestrian and green areas (with more to be studied to south and east)
- Major walks\*
- Existing campus buildings to remain
- Buildings under construction or in design
- Some possible future structures (with more to be studied)

\*Note: Many walk and bikeways are shown straight for diagrammatic clarity; in actuality many will be curved and shaped to topography, planting and buildings.

**DRAFT**  
**1-30-87**  
 Comments and questions should be sent to the campus planning advisory committee, 109 Pickard Hall. Revised edition scheduled for January 1988.





Artistic reflections are produced by the tinted glass on the south side of the Ellis Library addition. The 50,000-square-foot expansion is expected to be completed in April.

Denis Finley photo

A master plan is an overall guide. It does not describe specific projects or design details, but rather establishes the larger context for them. Since the Sesquicentennial Plan focuses on campus-wide issues, specific projects are dealt with separately.

At any one time, more than 700 campus improvement projects are in process. The funding for these projects comes from many public and private sources, often in complex combinations. The master plan helps ensure the value of the expenditures and the success and long life of the projects.

Much improvement has come to the campus in the past few years, with much more under way. Great changes have come to the campus and to the city of Columbia in the past 50 years, and more change is likely in the coming decades. As the city grows and changes on all sides of the campus, Mizzou must plan carefully for the best use of every square foot of its land, because increased land holdings are not expected.

Independent studies by outside consultants have identified space needs for many parts of the campus. Program planning for colleges, schools and services helps develop the best match between programs, people and facilities. As with campus land, campus buildings are under continuing study for optimum efficiency and attractiveness.

The plan seeks to identify the campus' enduring features of design, which are expected to remain unchanged as Mizzou continues with the constant adjustments to facilities that are characteristic of a large university. The recommendations result from an effort to secure maximum campuswide improvements as simply and quickly as possible, in a manner consistent with University assumptions for lim-

ited funding, a limited construction program, a stable population and a permanent campus of great importance. Most complex issues are located in the center of campus, which also offers the greatest opportunities for improvement. Therefore, it has been the focus of attention so far. Other areas will be studied more fully as the planning process continues.

## NEXT STEPS

1. Your comments on this draft Sesquicentennial Plan are requested. Please mark up this supplement and send to the campus planning advisory committee, c/o Professor Osmund Overby, chair, 109 Pickard Hall.
2. Attend a video- and slide-show open hearing on the plan. They are scheduled for noon-2 p.m. Feb. 9 in Memorial Union Auditorium; 7-9 p.m. Feb. 9 in Geology Building Auditorium; noon-2 p.m. Feb. 10 in M105 Medical School Auditorium; 4-6 p.m. Feb. 10 in Geology Building Auditorium; 12:40-2 p.m. Feb. 11 in Memorial Union Auditorium; and 5-7 p.m. Feb. 11 in Geology Building Auditorium. The hearings also will include question-and-answer sessions.
3. Watch for the schedule of new slide-show open hearings for the University and the community in April. The hearings will include a progress report on planning and status reports on specific projects.
4. The master plan video may be borrowed for meetings by calling 882-3387.
5. This publication is expected to be updated each year; your comments on how to make it more effective are welcome.

### CAMPUS PLANNING COMMITTEE

The campus planning committee advises the vice chancellor for Administrative Services on the facility needs of the campus. Members for 1986-87 are:

**Chair:**

Osmund Overby, *professor of art history and archaeology*

**Faculty:**

Neal Benjamin, *professor of civil engineering*

George Boyle, *assistant professor of labor education extension*

Howard Marshall, *associate professor of art history and archaeology*

Marshall Masek, *assistant professor of recreation and park administration*

Dana Weaver, *assistant professor of surgery*

**Staff:**

Rosemary Lewis, *administrative associate I in agriculture*

Fran Malloy, *administrative associate II in the Graduate School*

Dick Turner, *police sergeant with University Police*

**Students:**

Bart Farris, Jim Givens and Steve Knorr

**Ex officio:**

Roger Fisher, *director of Residential Life*

Carma Messerli, *coordinator of the Access Office for Students with Disabilities*

### CAPITAL REVIEW GROUP

The capital review group meets weekly to review campus planning and project issues. Members are:

Duane Stucky, *interim chancellor*

Lois DeFleur, *provost*

Norman Moore, *vice chancellor for Student, Personnel and Auxiliary Services*

Roger Gafke, *vice chancellor for Development, University and Alumni Relations*

Kee Groshong, *interim vice chancellor for Administrative Services*

Robert Smith, *executive director of University Hospital and Clinics*

Jack Lengyel, *director of Intercollegiate Athletics*



Wrap yourself in winter semester activities. In the Museum of Art and Archaeology, below, discover Corinthian vases and other artifacts. Across Francis Quadrangle, a "Mostly Mozart" festival will pay tribute to the musical genius. Browse through these listings for a complete look at campus events.



Denis Finley photo

# UNEARTH THE --- TREASURES



# JANUARY

## 30 Friday

- SEMINAR:** Third annual "Track and Field Coaches Clinic" will be held today and Jan. 31 at the Columbia Hilton Convention Center, 2200 I-70 Drive S.W. Cost: \$30. Call 882-8253.
- REC-AEROBICS WATER EXERCISE:** Sign up now at 106 Rothwell Gymnasium for classes that begin Feb. 1. Minimum fee.
- REC-INTRAMURALS GOALGETTERS:** Sign up between now and Feb. 11 at Rothwell Gymnasium for personalized fitness classes that begin Feb. 16. Minimum fee.
- CO-REC FACULTY AND STAFF VOLLEYBALL:** Sign up between now and Feb. 16 at 106 Rothwell Gymnasium for play that begins Feb. 24. Cost: \$25. Open to faculty, staff and graduate students.
- MISSOURI INSTITUTE OF PSYCHIATRY:** John W. Knesevich will present "The Clinical Utility of Obtaining Tricyclic Antidepressant Plasma Levels" at 1 p.m. in the St. Louis State Hospital, Kohler Bldg. Aud., 5400 Arsenal St., St. Louis.
- CPPC:** "See Yourself as Others See You," practice job interviews, will be held at 1:40, 2:40 and 3:40 p.m. at the Career Planning and Placement Center, 110 Noyes Hall.
- BLACK CULTURE CENTER:** "Soul Video" will be presented at 6 p.m. at the Black Culture Center, 823 Virginia Ave.
- MEN'S SWIMMING:** Team will meet Drury at 7 p.m. in the Natatorium.
- STUDENT RECITAL SERIES:** Johnna Dean, soprano, and Wesley Morton, tenor, will present a recital at 7 p.m. in the Fine Arts Recital Hall.
- MSA FILM:** "Stand by Me," rated R, will be shown at 7 and 9:30 p.m. in Jesse Aud. Cost: \$2.
- GYMNASTICS:** Team will meet Nebraska at 7:30 p.m. in the Hearnes Bldg. Cost: \$3 faculty/staff, \$2 students.
- SEE THE STARS:** Weather permitting, the Laws Observatory on the roof of the Physics Bldg. will be open from 8-10 p.m.

## 31 Saturday

- CAMPUS COMPUTING SHORT COURSE:** "Beginning CMS" will be held from 9 a.m.-noon in 210 Brady Commons. To enroll call 882-2112. from 5-7 p.m. on KBIA, 91 FM.
- WOMEN'S BASKETBALL:** Team will play Kansas State at 5:45 p.m. in the Hearnes Bldg. Cost: \$3 faculty/staff, \$2 students.
- MSA FILM:** "Stand by Me," rated R, will be shown at 7 and 9:30 p.m. in Jesse Aud. Cost: \$2.

**ART EXHIBIT AND AUCTION:** Event will be held at 6:30 p.m. in the lobby concourse of the University Hospital and Clinics to benefit the Children's Miracle Network Telethon.

# FEBRUARY

## 1 Sunday

- BLACK HISTORY MONTH:** Events will be held throughout campus.
- MEN'S BASKETBALL:** Team will play Kansas State at 1:10 p.m. in the Hearnes Bldg. Cost: \$5.50-\$8 faculty/staff, \$4-\$6 students.
- MSA FILM:** "Cover Girl," not rated, will be shown at 8 p.m. in Memorial Union Aud. Cost: 50 cents.

## 2 Monday

- AG SCIENCE WEEK SEMINAR:** "Corn Conference" will be held from 8 a.m.-5:15 p.m. at the Columbia Hilton Inn, 2200 I-70 Drive S.W. Cost: \$7.50 in advance, \$10 at the door. Cost includes a 7 p.m. banquet. Call the Missouri Corn Grower Association at (314) 635-9877.
- SEMINAR:** Annual "Food Technology Conference" will be held from 8 a.m.-5 p.m. in S203 Memorial Union. Cost: \$50. Call 882-8253.
- BIOCHEMISTRY SEMINAR SERIES:** Myron L. Toews, assistant professor of pharmacology, will present "Agonist-induced Changes in Binding and Functional Properties of Beta- and Alpha-Adrenergic Receptors" at 3:40 p.m. in 322 Chemistry Bldg. Refreshments will be served at 3:30 p.m.
- CRAFT STUDIO:** Basic photography classes will be held from 6:30-9 p.m. Mondays through March 2 in 203 Brady Commons. Basketry classes will be held from 6:30-9 p.m. Mondays through March 2 in 203 Brady Commons. Basic woodworking classes will be held from 6:30-9 p.m. Mondays through March 23 in 203 Brady Commons. Call 882-2889.
- WOMEN'S CENTER:** "Christianity and Feminism" will be presented at 7 p.m. in the Women's Center, 1 Gentry Hall.
- LECTURE:** "The Indian Wars Are Not Over" will be presented by Steve Robideau, a prominent native American rights activist, at 7:30 p.m. in Gannett Forum.
- CHANCELLOR'S FESTIVAL OF MUSIC:** The Juilliard Quartet will perform at 8 p.m. in Jesse Aud. Cost: \$14 faculty/staff, \$13 students.
- MSA FILM:** "Mr. Hulot's Holiday," not rated, will be shown at 8 p.m. in Memorial Union Aud. Cost: \$1.

## 3 Tuesday

- AG SCIENCE WEEK SEMINAR:** The 31st annual "Missouri Farm Electrification Conference" will be held from 9 a.m.-5 p.m. today and from 8:15-11:45 a.m. Feb. 4 at the Holiday Inn East, 1612 N. Providence Road. Cost: \$30 for two days, \$20 for first day only. To register call Lois Newton at 882-7044.
- AG SCIENCE WEEK SEMINAR:** "Fish Farming Days" will be presented from 8 a.m.-9:30 p.m. today and from 8:30 a.m.-noon Feb. 4 at the Campus Inn, 1112 Stadium Blvd. Cost: \$18. To register call DeeCee Freiling at 882-4337.
- AG SCIENCE WEEK SEMINAR:** "Soybean/Irrigation Conference" will be held from 8:30 a.m.-3:30 p.m. at the Columbia Hilton Inn, 2200 I-70 Drive S.W. Cost: \$7.50 in advance, \$10 at the door. To register call Don Pfost at 882-2731.
- AG SCIENCE WEEK SEMINAR:** "Mail-In-Records Conference" will begin at 1 p.m. today and continue Feb. 4 at the Ramada Inn, 1100 Vandiver Drive. For information call Norlin Hein at 882-2667.
- AG SCIENCE WEEK SEMINAR:** "Agricultural Leadership of Tomorrow Conference" will be held from 1-5 p.m. today and from 8 a.m.-noon Feb. 4. For information call Bill McKinley at 882-4512.
- FORUM:** The Peace Studies Program will hold a forum on the draft at 1:30 p.m. in S3 Memorial Union.
- CPPC:** "Orientation to Career Planning and Placement Center Services" will be held from 4-5 p.m. in 110 Noyes Hall.
- CRAFT STUDIO:** Basic photography classes will be held from 6:30-9 p.m. Tuesdays through March 3 in 203 Brady Commons. Cartooning classes will be held from 6:30-9 p.m. Tuesdays through March 3 in 203 Brady Commons. Call 882-2889.
- WOMEN'S CENTER:** Joanie Connors, doctoral candidate in counseling psychology, and Hope Hills, assistant professor of educational and counseling psychology, will present "Women's Roles, An Exploration" at 7 p.m. in the Women's Center, 1 Gentry Hall.
- BLACK HISTORY MONTH CONVOCATION:** Mary Francis Berry, professor of history and law at Howard University, will present "The Afro-American and the Constitution: Colonial Times to the Present" at 7:30 p.m. in Gannett Aud.

## 4 Wednesday

- NEW EMPLOYEE ORIENTATION:** Event will be held from 9-11 a.m. in the education and development center in the Heinkel Bldg.
- AG SCIENCE WEEK SEMINAR:** "Ag Policy Seminar" will be held from 9-11 a.m. in N214-215 Memorial Union. Call Jerry West at 882-4512.
- AG DAY BARBECUE:** Event will begin at noon at the Trowbridge Livestock Center. Cost: \$8. Call Linda Holsinger at 882-3752.
- MIDDAY GALLERY TALK:** Patricia Condon, curator of European and American art at the Museum of Art and Archaeology, will present "American Art Since 1945: Selections from the Permanent Collection" at 12:25 p.m. in Pickard Hall.
- BUSINESS SERVICES SEMINAR:** Jim Robinson, manager of Cashiers-Payroll-Student Loans, will present a session on payroll at 1:15 p.m. in S203 Memorial Union. To register call 882-4859.
- AGRICULTURE ALUMNI CAREER DEVELOPMENT SHORT COURSE:** Event will be presented from 2-5 p.m. in S147A Animal Sciences Center. Call Katherine Sicht at 882-7774.
- BUSINESS SERVICES SEMINAR:** Beverly Blackwell, manager of Telecommunications, will present a session on telecommunications at 3 p.m. in S203 Memorial Union. To register call 882-4859.
- OPEN OFFICE HOURS:** Provost Lois DeFleur will hold open office hours from 3-5 p.m. in 114 Jesse Hall for one-on-one discussions with faculty, staff and students.
- CRAFT STUDIO:** Weaving classes will be held from 6:30-9 p.m. Wednesdays through March 4 in 203 Brady Commons. Intermediate knitting classes will be held from 6:30-9 p.m. Wednesdays through March 4 in 203 Brady Commons. Stained glass classes will be held from 6:30-9 p.m. Wednesdays through March 4 in 203 Brady Commons. Call 882-2889.
- WOMEN'S CENTER:** A review of Lynn Andrews' books will be presented at 7 p.m.

- in the Women's Center, 1 Gentry Hall.
- LECTURE:** Manuel Puig, author of "Kiss of the Spider Woman," will present "Films and Literature: A Personal Experience" at 7:30 p.m. in Memorial Union Aud.
- AG SCIENCE WEEK PROGRAM:** Missouri Seed Improvement Association will meet at 7:30 p.m. for dinner and awards program at the Columbia Hilton Inn, 2200 I-70 Drive S.W. Call 449-0586.
- MSA FILM:** "Breaker Morant," rated PG, will be shown at 8 p.m. in Ellis Aud. Cost: \$1.
- GRANTS WRITING WORKSHOP:** Graduate Professional Council will sponsor the 9:20 a.m. event in S8 Memorial Union. Call 882-3492.

## 5 Thursday

- AG SCIENCE WEEK SEMINAR:** "Tree Farm Day" will be held from 8 a.m.-5 p.m. in the Memorial Union. Cost: \$10, includes banquet. Call Carol Trokey at 882-2856.
- MISSOURI PORK CONFERENCE:** Event will begin at 8 a.m. at the Livestock Center.
- BUSINESS SERVICES SEMINAR:** Arlis Saunders, administrative assistant in Environmental Health and Safety, will present a session on environmental health and safety at 8:30 a.m. in S206 Memorial Union. To register call 882-4859.
- AG SCIENCE WEEK SEMINAR:** Missouri Seed Improvement Association will meet from 9 a.m.-3:30 p.m. at the Columbia Hilton Inn, 2200 I-70 Drive S.W.
- BUSINESS SERVICES SEMINAR:** Guy Maddox, manager of General Stores, and Larry Baumgartner, manager of Materials Management, will present a session on purchasing at 10 a.m. in S206 Memorial Union. To register call 882-4859.
- WOMEN'S CENTER:** Kerry Hollander, program coordinator of the Hillel Foundation, will present "Changing Roles of Women in Judaism" at noon in the Women's Center, 1 Gentry Hall.
- LECTURE:** Osmund Overby, professor of art history and archaeology, will present "Historic American Buildings Survey" at 12:15 p.m. in the Missouri Cultural Heritage Center gallery, Conley House second floor.
- BUSINESS SERVICES SEMINAR:** Jim Southern, manager of Campus Mail Service, will present a session on mail services at 1:30 p.m. in S206 Memorial Union. To register call 882-4859.
- CPPC:** "See Yourself as Others See You," practice job interviews, will be held at 1:40, 2:40 and 3:40 p.m. at the Career Planning and Placement Center, 110 Noyes Hall.
- FACULTY COUNCIL:** Group will meet at 3:40 p.m. in S110 Memorial Union.
- HONORS THREE CULTURES LECTURE:** John Kultgen, professor of philosophy, will speak on "Paradigms and the Science of Cultures" at 4 p.m. in 114 Arts and Science Bldg.
- CRAFT STUDIO:** Calligraphy classes will be held from 6:30-9 p.m. Thursdays through March 5 in 203 Brady Commons. Pot throwing classes will be held from 6:30-9 p.m. Thursdays through March 5 in 203 Brady Commons. Call 882-2889.
- BLACK HISTORY MONTH LECTURE:** Sandra Moore, attorney/examiner for the Equal Employment Opportunity Commission, region seven, will present "Recent Trends in the Interpretation of the U.S. Constitution and the Impact on Blacks in America" at 7 p.m. at the Black Culture Center, 823 Virginia Ave.

## 6 Friday

- AG SCIENCE WEEK SEMINAR:** "Swine Day Conference" will begin at 9 a.m. at the Trowbridge Livestock Center. Breakfast will be served at 7 a.m. Cost: \$10. To register call John Rea at 882-7327.
- BUSINESS SERVICES SEMINAR:** Libby Miederhoff, manager of Accounting Services, will present sessions on accounting forms and procedures at 10 a.m. and 1:30 p.m. in S203 Memorial Union. To register call 882-4859.
- BUDGET HEARING:** Open session on 1988-89 budget will be held from 10-11:15 a.m. in N214-215 Memorial Union.
- MISSOURI INSTITUTE OF PSYCHIATRY:** Seymour L. Halleck, professor of psychiatry at Washington University, will present "Patient's Rights and the Physician's Liability" at 1 p.m. in St. Louis State Hospital Kohler Bldg. Aud., 5400 Arsenal St., St. Louis.
- MSA FILM:** "Legal Eagles," rated PG, will be shown at 7 and 9:30 p.m. in Ellis Aud. Cost: \$2.
- MSA MUSICAL:** "One Mo' Time" will be

## A new service for Mizzou Weekly readers

## Classified Advertisements

As a service to readers, Mizzou Weekly will accept classified ads, starting Jan. 23. The Classified Advertising Section is *only* open to faculty and staff members for personal use. The text is limited to a 30-word maximum at a cost of \$3. A home phone number is required in all classified ads. A check, payable to University of Missouri, *must* accompany typed copy and be delivered in campus mail to:

Mizzou Weekly  
1100 University Place  
University of Missouri-Columbia  
Attn: Sherrill

Please include your daytime phone number so we can reach you, if necessary. No ads will be accepted over the phone or without payment.

The advertising deadline is Wednesday the week prior to publication. For example, for a classified ad published Friday, Feb. 6, copy is due Wednesday, Jan. 28.

Mizzou Weekly reserves the right to refuse any advertising.

**SERVICES**

Carpentry, home repairs, problem solving. Call Doug at XXX-XXXX.

Interested in assisting the elderly or handicapped in housecleaning, meals or other odd jobs. For more information call XXX-XXXX.

**AUTOMOBILES**

A perfect sized economy car. 1980 Oldsmobile. For more information call XXX-XXXX.



presented at 8 p.m. in Jesse Aud. Cost: \$7 faculty/staff, \$5 students.  
**SEE THE STARS:** Weather permitting, the Laws Observatory on the roof of the Physics Bldg. will be open from 8-10 p.m.

**FEBRUARY**  
**7 Saturday**

**AG SCIENCE WEEK:** Missouri Pork Producers Association and Missouri Pork Council of Women will hold their delegate session this morning at the Hilton Inn, 2200 I-70 Drive S.W. The Mizzou Boar Test Sale will be held at 2 p.m. in the Trowbridge Livestock Center.  
**CAMPUS COMPUTING SHORT COURSE:** "Beginning CMS" will be presented from 9 a.m.-noon at 210 Brady Commons. To enroll call 882-2112.  
**MASTER CLASS SERIES:** Carleton Spotts, cellist, will lead the class at 2:40 p.m. in the Fine Arts Recital Hall.  
**MSA FILM:** "Legal Eagles," rated PG, will be shown at 7 and 9:30 p.m. in Jesse Aud. Cost: \$2.  
**FACULTY RECITAL SERIES:** Carleton Spotts, cellist, and Janice Wenger, pianist, will perform at 8 p.m. in the Fine Arts Recital Hall.  
**MSA FILM:** "The Exorcist," rated R, will be shown at midnight in Jesse Aud. Cost: \$1.50.

**8 Sunday**

**SEMINAR:** The 13th "Rate Symposium on Pricing Electric, Gas and Telecommunications Services" will be presented through Feb. 11 at Union Station in St. Louis. Cost: \$400. Call 882-8253.  
**MSA FILM:** "Blithe Spirit," not rated, will be shown at 8 p.m. in Memorial Union Aud. Cost: 50 cents.

**9 Monday**

**SEMINAR:** "Amino Acid Analysis Short Course" will be held from 8 a.m.-5 p.m. in the Agriculture Bldg. Cost: \$765. Call 882-8253.  
**PENNEY-MISSOURI TV COMPETITION JUDGING:** Event will be held from 9 a.m.-5 p.m. today and Feb. 10 in the Neff Committee Room.  
**WOMEN'S CENTER:** India McCause, director of education for Planned Parenthood of Central Missouri, will present "Personal Decisions," an update on state and national abortion legislation, at noon in the Women's Center, 1 Gentry Hall.  
**CAMPUS COMPUTING SHORT COURSE:** "Intermediate CMS" will be held from 2:40-4:30 p.m. through Feb. 13 in 106 Lefevre Hall. To enroll call 882-2112.  
**CAMPUS COMPUTING SHORT COURSE:** "Orientation to the PC" will be held from 2:40-4:30 p.m. through Feb. 13 in 116 Lefevre Hall. To enroll call 882-2112.  
**BIOCHEMISTRY SEMINAR SERIES:** Lloyd A. Horrocks of The Ohio State University College of Medicine will present "Recent Developments in Ether-Type Glycerophospholipids: Metabolism and Analytical Methods (Plasmalogens and Platelet Activating Factor)" at 3:40 p.m. in 322 Chemistry Bldg. Refreshments will be served at 3:30 p.m.  
**CPCC ADULT EVENING SEMINAR:** "Issues of the Working Couple" will be held from 7-8:30 p.m. Mondays through Feb. 23 at the Career Planning and Placement Center, 220 Noyes Hall. To register call 882-6803.  
**LECTURE:** J. Wilson Myers will present "Balloon Archaeology in Greece and Crete" at 8 p.m. in 106 Pickard Hall. Event is sponsored by Archaeological Institute of America.  
**FACULTY RECITAL SERIES:** Missouri Arts Quintet will perform at 8 p.m. in the Fine Arts Recital Hall.  
**MSA FILM:** "Two English Girls," not rated, will be shown at 8 p.m. in Memorial Union Aud. Cost: \$1.  
**MSA SPECIAL EVENT:** Comedian Eddy Strange will perform at 8 p.m. in Memorial Union Lounge.

**10 Tuesday**

**LECTURE:** "The State of the University's Action Plan" will be presented by Duane Stucky, interim chancellor, at an 11:30 a.m. luncheon meeting of the Columbia Chamber of Commerce at the Columbia Hilton Inn, 2200 I-70 Drive S.W.

# TOURS FROM THE TOWER


Featuring campus points of interest

Francis Quadrangle Historic District, Museum of Art and Archaeology, Museum of Anthropology, Woodland and Floral Gardens, general campus or whatever you choose.

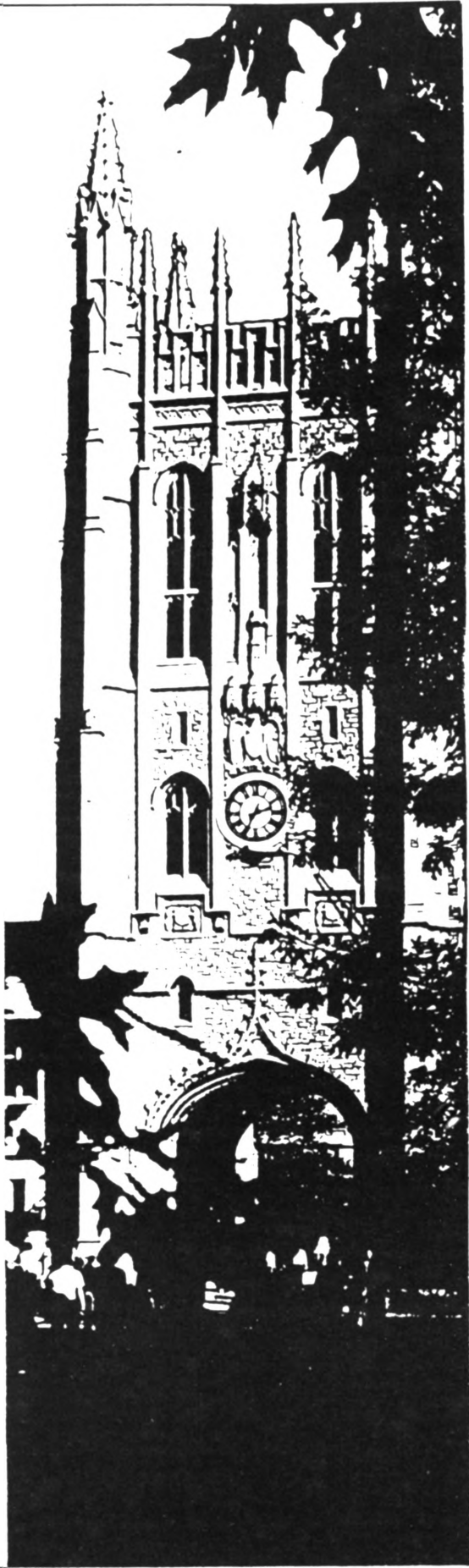
**1:45 pm MONDAY - FRIDAY**  
when UMC classes are in session

Leave from North Lobby of Memorial Union

To arrange for groups of more than 10 or for special tours, call or stop in at Visitor and Guest Relations, 103 Heinkel Building, phone (314) 882-6333, 8:00 am to 5:00 pm Monday through Friday.



University of Missouri-Columbia  
Visitor & Guest Relations Office  
103 Heinkel Building  
Columbia Missouri 65211



**11 Wednesday**

**MIDDAY GALLERY EVENT:** George Mooney, local musician, will perform "Improvisation of Icarus and Other Musical Flights" at 12:25 p.m. in Pickard Hall.  
**SEMINAR:** A workshop on how to prepare an entry for the Best of Missouri Hands catalog will be held from 1-9 p.m. at the Ramada Inn, 4016 Frederick Ave., St. Joseph, Mo. Cost: \$10 per person, \$17 for couples or business partners. To register contact a county extension center.  
**CPCC:** "See Yourself as Others See You," practice job interviews, will be held at 1:40, 2:40 and 3:40 p.m. at the Career Planning and Placement Center, 110 Noyes Hall.  
**OPEN HOURS:** Provost Lois DeFleur will hold open office hours from 3-5 p.m. in 114 Jesse Hall for one-on-one discussions with faculty, staff and students.  
**CPCC:** "Orientation to Career Planning and Placement Center Services" will be held from 4-5 p.m. in 110 Noyes Hall.  
**WOMEN'S BASKETBALL:** Team will play Kansas at 5:45 p.m. in the Hearnes Bldg. Cost: \$3 faculty/staff, \$2 students.

**CRAFT STUDIO:** Valentine Cards class will be held from 6:30-9 p.m. in 203 Brady Commons. Call 882-2889.  
**WOMEN'S CENTER:** "Discover Yourself in Your Dreams" will be presented at 7 p.m. at the Women's Center, 1 Gentry Hall.  
**BLACK CULTURE CENTER:** Scholarship Recognition Program will be held at 7 p.m. in N214-215 Memorial Union.  
**MSA FILM:** "That Darn Cat," rated G, will be shown at 7 p.m. in Ellis Aud. Cost: \$1.  
**MEN'S BASKETBALL:** Team will play Kansas at 7:35 p.m. in the Hearnes Bldg. Cost: \$5.50-\$8 faculty/staff, \$4-\$6 students.  
**MSA FILM:** "Bedknobs and Broomsticks," rated G, will be shown at 9:15 p.m. in Ellis Aud. Cost: \$1.

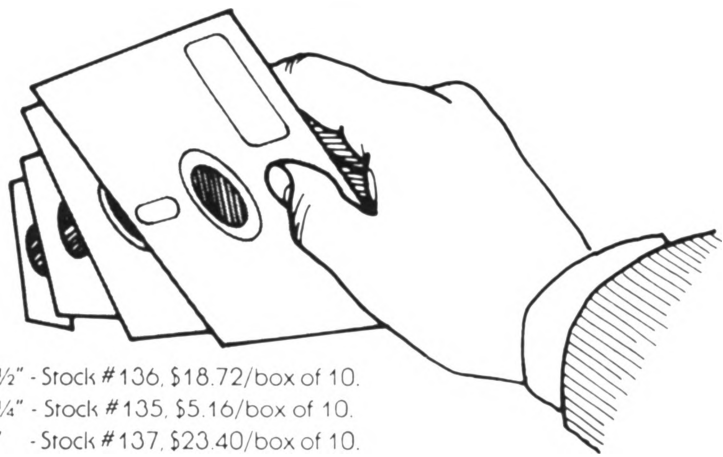
**12 Thursday**

**CONFERENCE:** "Advancements in Sickle Cell Disease" will be presented today and Feb. 13 at the Marriott Airport Hotel, I-70 at Lambert Airport, St. Louis. For cost

call 882-4105.  
**WOMEN'S CENTER:** Rita Nakashima Brock, director of women studies at Stephens College, will present "Spinning from a Broken Web: Christianity and Feminism" at noon in the Women's Center, 1 Gentry Hall.  
**SEMINAR:** A workshop on how to prepare an entry for the Best of Missouri Hands catalog will be presented from 1-9 p.m. at the Red Fox Inn, Highway 63 South, Kirksville, Mo. Cost: \$10 per person, \$17 for couples or business partners. To register contact a county extension center.  
**STAFF COUNCIL:** Group will meet at 1:15 p.m. in S206 Memorial Union.  
**HONORS THREE CULTURES LECTURE:** Kenneth Benson, professor of sociology, will speak on "The Complexity of Society and Its Impact on the Person" at 4 p.m. in Memorial Union Aud.  
**WOMEN'S CENTER:** Karen Kaupanger, massage therapist and owner of the Swedish Massage Center, will present "Touch for Health" at 7 p.m. in the Women's Center, 1 Gentry Hall.  
**WRESTLING:** Team will meet Eastern Illinois at 7:30 p.m. in the Hearnes Bldg. Cost: \$2 faculty/staff, \$1 students.  
**ENVIRONMENTAL ENGINEERING**



## What you've been waiting for!



3 1/2" - Stock #136, \$18.72/box of 10.  
5 1/4" - Stock #135, \$5.16/box of 10.  
8" - Stock #137, \$23.40/box of 10.

### 3 1/2 inch double-sided diskettes.

General Stores now carries Memorex 3 1/2" diskettes. Until now you've had to go elsewhere to get them. Now you can get them at a lower price, with fast, free delivery. The Memorex name insures quality.

That Memorex quality can also be found on our 5 1/4" diskettes. These diskettes are double sided, double density, and have General Stores usual low price.

You can also get double sided, double density 8" diskettes at General Stores. These, as all our products, are reasonably priced, and of high quality.

Count on General Stores for low prices and high quality. For all your office, janitorial and maintenance supplies... Check with us first

**General Stores**  
Office, janitorial and  
maintenance supplies  
882-6906

from the can do crew

**SEMINAR:** Roy Hengerson of the Missouri Department of Natural Resources will present "Low-Level Radioactive Waste Management in Missouri" at 7:30 p.m. in S203 Memorial Union.

FEBRUARY

## 13 Friday

**GRADUATE-FACULTY SENATE:** Executive committee will meet at 3:40 p.m. in S208 Memorial Union.

**BLACK CULTURE CENTER:** "Soul Video" will be presented at 6 p.m. at the Black Culture Center, 823 Virginia Ave.

**PURINA CAT CLASSIC:** Gymnastics team will meet Penn State, Arizona, Auburn and Kentucky at 7 p.m. today and Feb. 14 in the Hearnes Bldg. Cost: \$3 faculty/staff, \$2 students.

**MSA FILM:** "About Last Night," rated R, will be shown at 7 and 9:30 p.m. in Ellis Aud. Cost: \$2.

**SEE THE STARS:** Weather permitting, the Laws Observatory on the roof of the Physics Bldg. will be open from 8-10 p.m.

## 14 Saturday

**PICTURES OF THE YEAR:** Judging will continue through Friday in Gannett Hall.  
**WOMEN'S SWIMMING:** Team will meet

Western Illinois at 2 p.m. in the Natatorium.

**KBIA:** "A Prairie Home Companion" will be presented from 5-7 p.m. on KBIA, 91 FM.

**MSA FILM:** "About Last Night," rated R, will be shown at 7 and 9:30 p.m. in Ellis Aud. Cost: \$2.

**CONCERT SERIES:** The Guthrie Theater will perform "Candida" at 8 p.m. in Jesse Aud. Cost: \$12 faculty/staff, \$11 students.

## 15 Sunday

**KBIA:** "A Prairie Home Companion" will be presented from 2-4 p.m. on KBIA, 91 FM.

**MSA FILM:** "None But The Lonely Heart," not rated, will be shown at 8 p.m. in Memorial Union Aud. Cost: 50 cents.

## 16 Monday

**INTRAMURALS:** Volleyball entries will close today for play that begins Feb. 24. Register at 106 Rothwell Gymnasium. Minimum fee.

**FILM:** "A Witness to Apartheid" will be shown all week from 9 a.m.-5 p.m. at the Black Culture Center, 823 Virginia Ave.

**WOMEN'S CENTER:** Barbara Bauer, psychologist at the Center for Family and Individual Counseling, will present "Corsettes, Nose-rings and Diets: Tools of the Trade," at noon in the Women's Center, 1 Gentry Hall.

**SEMINAR:** A workshop on how to prepare an entry for the Best of Missouri Hands catalog will be held from 1-9 p.m. at St. Michael's Catholic Church Annex, 400 W. Main St., Fredericktown, Mo. Cost: \$10 per person, \$17 for couples or business partners. To register contact a county extension center.

**CAMPUS COMPUTING SHORT COURSE:** "Introduction to Easy" will be held from 2:40-4:30 p.m. through Feb. 20 in 106 Lefevre Hall. To enroll call 882-2112.

**BIOCHEMISTRY SEMINAR SERIES:** Keith Brew of the Department of Biochemistry, University of Miami School of Medicine, will present "Structured, Evolutionary and Functional Correlations Between Some Proteins Which Bind Lipophilic Molecules" at 3:40 p.m. in 322 Chemistry Bldg. Refreshments will be served at 3:30 p.m.

**BLACK CULTURE CENTER:** "The Black American Male," a panel discussion, will be held at 7 p.m. at the Black Culture Center, 823 Virginia Ave.

**WOMEN STUDIES WINTER**

**COLLOQUIUM:** Carole Myscofski, assistant professor of religious studies, will present "Myths of Lost Dominance of Women: Two Case Studies" at 7:30 p.m. in S7 Memorial Union.

**MSA FILM:** "The World of Apu," not rated, will be shown at 8 p.m. in Memorial Union Aud. Cost: \$1.

**GUEST ARTIST SERIES:** Janice Saffir, pianist, will perform at 8 p.m. in the Fine Arts Recital Hall.

## 17 Tuesday

**WOMEN'S CENTER:** Karen Fitzgerald, groups and counseling intern and doctoral candidate in counseling psychology, will present "Humming and Beckoning: An Alternative to Dieting" at noon in the Women's Center, 1 Gentry Hall.

**SEMINAR:** A workshop on how to prepare an entry for the Best of Missouri's Hands catalog will be held from 1-9 p.m. at the First United Methodist Church, West Main and Missouri avenues, West Plains, Mo. Cost: \$10 per person, \$17 for couples or business partners. To register contact a county extension office.

**CPPC:** "See Yourself as Others See You," practice job interviews, will be held at 1:40, 2:40 and 3:40 p.m. at the Career Planning and Placement Center, 110 Noyes Hall.

**CAMPUS COMPUTING SHORT COURSE:** "Working with the Fixed Disk Organizer" will be held from 2:40-4:30 p.m. in 116 Lefevre Hall. To enroll call 882-2112.

## 18 Wednesday

**ENGINEERING SHORT COURSE:**

"Construction Planning and Scheduling" will be presented today and Feb. 19 at the Engineers Club, 4359 Lindell Blvd., St. Louis. Cost: \$425. Call 882-3266.

**SEMINAR:** "George Washington's Birthday Conference, Project Linc" will be presented at 8 a.m. at the Hilton Inn, 2200 I-70 Drive S.W. Cost: \$20. Event is sponsored by the College of Education and the Mizzou Conference Office.

**NEW EMPLOYEE ORIENTATION:** Event will be held from 9-11 a.m. in the education and development center in the Heinkel Bldg.

**MIDDAY GALLERY TALK:** Gilbert Porter, professor of English, will present "Forms of Alienation in Art and Fiction" at 12:25 p.m. in Pickard Hall.

**PSYCHIATRY FACULTY PRESENTATION:** Bernard D. Beitman, associate professor of psychiatry, will present "Panic Disorder in Cardiology Patients with Chest Pain" at 1 p.m. in the Truman Veterans' Hospital Aud.

**SEMINAR:** A workshop on how to prepare an entry for the Best of Missouri's Hands catalog will be held from 1-9 p.m. at the Hilton Inn, 3050 N. Kentwood, Springfield, Mo. Cost: \$10 per person, \$17 for couples or business partners. To register contact a county extension office.

**CAMPUS COMPUTING SHORT COURSE:** "Introduction to Research Computing" will be held from 2:40-4:30 p.m. in 116 Lefevre Hall. To enroll call 882-2112.

**OPEN HOURS:** Provost Lois DeFleur will hold open office hours from 3-5 p.m. in

114 Jesse Hall for one-on-one discussions with faculty, staff and students.

**CPPC:** "Your Resume: Write It Right" will be held from 3:45-5 p.m. at the Career Planning and Placement Center, 220 Noyes Hall.

**WOMEN'S BASKETBALL:** Team will play Nebraska at 5:45 p.m. in the Hearnes Bldg. Cost: \$3 faculty/staff, \$2 students.

**MEN'S BASKETBALL:** Team will play Nebraska at 7:35 p.m. in the Hearnes Bldg. Cost: \$5.50-\$8 faculty/staff, \$4-\$6 students.

**FACULTY RECITAL SERIES:** Dan Willett, oboist, will perform with the Esterhazy Quartet: Edward Thaden, harpsichordist; George Gorden, pianist; and Barbara Wood, bassoonist, at 8 p.m. in the Fine Arts Recital Hall.

**MSA FILM:** "Snake Pit," rated PG, will be shown at 8 p.m. in Ellis Aud. Cost: \$1.

**LECTURE:** Dumisani Kumalo, founder of Union of Black Journalists, will present "The Struggle for Freedom in South Africa" at 8 p.m. in Jesse Aud.

## 19 Thursday

**SEMINAR:** "Commercial Pesticide Applicator Training and Certification" will be presented through March 18 around Missouri. Call Mahlon Fairchild at 882-7871.

**WOMEN'S CENTER:** Carole Myscofski, assistant professor of religious studies, will present "The Genesis of Gender" at noon in the Women's Center, 1 Gentry Hall.

**BLACK HISTORY MONTH SEMINAR:** "Symposium on the Black American Family," a series of presentations, will be held from 1:30-3 p.m. in S3, S7, S8 and S206 Memorial Union.

**CROFT LECTURE IN ENGINEERING:** Dixy Lee Ray, former governor of the state of Washington and past chair of the U.S. Atomic Energy Commission, will present "In Praise of Technology" at 3:40 p.m. in the Electrical Engineering Aud.

**FACULTY COUNCIL:** Group will meet at 3:40 p.m. in S110 Memorial Union.

**CPPC:** "Your Job Interviews: Are You Ready?" will be held from 3:45-5 p.m. at the Career Planning and Placement Center, 220 Noyes Hall.

**HONORS THREE CULTURES LECTURE:** Walter Johnson, associate professor of economics, will speak on "The Dismal Science: Quantities and Qualities" at 4 p.m. in S203 Memorial Union.

**CPPC:** "Orientation to Career Planning and Placement Center Services" will be held from 4-5 p.m. in 110 Noyes Hall.

**BLACK HISTORY MONTH SEMINAR:** "Symposium on the Black American Family: Plenary Session" will be held from 7:30-9:30 p.m. in N214-N215 Memorial Union. A reception will follow.

## 20 Friday

**SEMINAR:** A hands-on fire extinguisher training seminar will be presented from 1-3 p.m. at 8 Research Park Development Bldg. To register call 882-7018.

**SEMINAR:** "Computer Users Education Conference" will be presented today and Feb. 21 at the Hilton Inn, 2200 I-70 Drive S.W. Cost: \$40, does not include meals. Call 882-8253.

**MSA FILM:** "Ruthless People," rated R, will be shown at 7 and 9:30 p.m. in Ellis Aud. Cost: \$2.

**SEE THE STARS:** Weather permitting, the Laws Observatory on the roof of the Physics Bldg. will be open from 8-10 p.m.

## 21 Saturday

**PICTURES OF THE YEAR JUDGING:** Event will be held from 8:30 a.m.-5 p.m. through Feb. 27 in the Gannett Forum.

**MUSIC DEPARTMENT SPECIAL EVENT:** UMC Jazz Festival will be presented in Jesse Aud. Time to be announced.

**WRESTLING:** Team will meet Northern Iowa at 2:30 p.m. in the Hearnes Bldg. Cost: \$2 faculty/staff, \$1 students.

**JAZZ FESTIVAL CONCERT:** Urbie Green, trombonist, will perform at 7 p.m. in Jesse Aud. For ticket information call 882-3875.

**MSA FILM:** "Ruthless People," rated R, will be shown at 7 and 9:30 p.m. in Ellis Aud. Cost: \$2.



**FEBRUARY**  
**22 Sunday**

**CONCERT PREVIEW:** Michael Budds, musicologist, will preview tonight's concert at 7 p.m. in the Fine Arts Recital Hall.  
**CONCERT SERIES:** The Franz Liszt Chamber Orchestra will perform at 8 p.m. in Jesse Aud. Cost: \$12 faculty/staff, \$11 students.  
**MSA FILM:** "Pride of the Yankees," not rated, will be shown at 8 p.m. in Memorial Union Aud. Cost: 50 cents.

**23 Monday**

**ARTS AND SCIENCE WEEK**  
**CPPC:** "See Yourself as Others See You," practice job interviews, will be held at 1:40, 2:40 and 3:40 p.m. at the Career Planning and Placement Center, 110 Noyes Hall.  
**CAMPUS COMPUTING SHORT COURSE:** "VM Utilities" will be held today and Feb. 24 from 2:40-4:30 p.m. in 106 Lefevre Hall. To enroll call 882-2112.  
**CAMPUS COMPUTING SHORT COURSE:** "Introduction to the Macintosh" will be held from 2:40-4:30 p.m. in 116 Lefevre Hall. To enroll call 882-2112.  
**BIOCHEMISTRY SEMINAR SERIES:** Michael S. Tempesta, assistant professor of chemistry, will present "New Mycotoxins from Fusarium" at 3:40 p.m. in 322 Chemistry Bldg. Refreshments will be served at 3:30 p.m.  
**BLACK HISTORY MONTH LECTURE:** Lorenzo J. Green, educator, scholar and humanitarian, will present "Black History" at 7 p.m. in the Black Culture Center, 823 Virginia Ave.  
**MSA FILM:** "Last Tango in Paris," rated X, will be shown at 7 and 9:30 p.m. in Memorial Union Aud. Cost: \$1. No one under 17 admitted.  
**CHANCELLOR'S FESTIVAL OF MUSIC:** University Philharmonic, conducted by Edward Dolbashian, and the UMC Opera, directed by George Darden, will present "Mozart and Vienna" at 8 p.m. in Jesse Aud. For ticket information call 882-2604.

**24 Tuesday**

**INTRAMURALS:** Co-rec volleyball play begins today.  
**CHANCELLOR'S FESTIVAL OF MUSIC:** Michael Budds, musicologist, will moderate a symposium on "The Music of Mozart: The Performer's Point of View" at 2:40 p.m. in the Fine Arts Recital Hall.  
**CAMPUS COMPUTING SHORT COURSE:** "Introduction to Excel on the Macintosh" will be held from 2:40-4:30 p.m. through Feb. 27 in 116 Lefevre Hall. To enroll call 882-2112.  
**LECTURE:** Laurel E. Wilson, assistant professor of clothing and textiles, will present "Conserving Family Heritage: Textiles from the Cornett Farm Project" at 5:30 p.m. in the Missouri Cultural Heritage Center gallery, Conley House second floor. Reception will begin at 5 p.m.  
**CPPC ADULT EVENING SEMINARS:** "Assessing Your Career Interests" will be presented from 7-9 p.m. at the Career Planning and Placement Center, 220 Noyes Hall.  
**STUDENT ENSEMBLE SERIES:** Studio Jazz Ensemble, directed by Jeffrey Lemke, will perform at Westminster College in Fulton, Mo., at 7:30 p.m.

**25 Wednesday**

**MIDDAY GALLERY EVENT:** J. Donald Crowley, professor of English, and Rod Santos, assistant professor of English and practicing poet, will present "Fragmentation and Focus: A Selection of American Poetry Since 1945" at 12:25 p.m. in Pickard Hall.  
**CAMPUS COMPUTING SHORT COURSE:** "3270 Emulations" will be held from 2:40-4:30 p.m. in 106 Lefevre Hall. To enroll call 882-2112.  
**OPEN OFFICE HOURS:** Provost Lois DeFleur will hold open office hours from 3-5 p.m. in 114 Jesse Hall for one-on-one discussions with faculty, staff and students.  
**WOMEN'S CENTER:** Karolin Solorzano, law student and rape education intern at the center, and David Towle, doctoral candidate in counseling psychology, will present "New Name, Old Problem: Acquaintance Rape" at 7 p.m. in the Women's Center, 1 Gentry Hall.

**HARLEM GLOBETROTTERS:** Team will perform at 7:30 p.m. at the Hearnes Bldg. Cost: \$9.50.  
**MSA FILM:** "Breakfast At Tiffany's," not rated, will be shown at 8 p.m. in Ellis Aud. Cost: \$1.

**26 Thursday**

**SEMINAR:** "Nutrition Update 1987" will be held today and Feb. 27 at the Columbia Hilton Inn, 2200 I-70 Drive S.W. Cost: \$85 for both days. To register call 882-4105.  
**BLACK HISTORY MONTH JOB FAIR:** Event will be held from 10 a.m.-4 p.m. in N214-215 and N201-202 Memorial Union.  
**WOMEN'S CENTER:** Maureen Brown, nurse practitioner, will present "The Life and Times of a Nurse Practitioner" at noon in the Women's Center, 1 Gentry Hall.  
**STAFF COUNCIL:** Group will meet at 1:15 p.m. in S206 Memorial Union.  
**TESTING ENGINEERING APTITUDES, MATHEMATICS AND SCIENCE:** College of Engineering will sponsor the state academic contest for high-school students today at the Hearnes Bldg. Awards ceremony will be held at 2:30 p.m. Call 882-2423.  
**MASTER CLASS SERIES:** Minoru Nojima, pianist, will lead the class at 2:40 p.m. in the Fine Arts Recital Hall.  
**CAMPUS COMPUTING SHORT COURSE:** "Full-screen ASCII Dialup" will be held from 2:40-4:30 p.m. in 106 Lefevre Hall. To enroll call 882-2112.  
**HONORS THREE CULTURES LECTURE:** Andrew Twaddle, professor of sociology, will speak on "Humans in Health Crisis" at 4 p.m. in S8 Memorial Union.  
**LECTURE:** Andrew Young, mayor of Atlanta and former ambassador to the United Nations, will speak at 7:30 p.m. Location to be announced. Call 882-4421.  
**UNIVERSITY THEATER:** "The Importance of Being Earnest" will be presented at 8 p.m. in Rhynsburger Theater. Cost: \$4.50 faculty/staff, \$2.50 students.

**27 Friday**

**CONFERENCE:** "Organizational Systems: A Conference on Authority, Role and Task" will be held from noon today to 5:15 p.m. March 1 in Memorial Union. Cost: \$125 faculty/staff. Call 882-4105.  
**WOMEN'S CENTER:** Susan Tobin, doctoral candidate in counseling psychology, will present "Voices of the Heart: A Woman's Struggle for Spirituality in Modern Day Times" at noon in the Women's Center, 1 Gentry Hall.  
**CAMPUS COMPUTING SHORT COURSE:** "Introduction to BITNET" will be held from 2:40-4:30 p.m. in 106 Lefevre Hall. To enroll call 882-2112.  
**CPPC:** "Orientation to Career Planning and Placement Services" will be held from 4-5 p.m. in 110 Noyes Hall.  
**BLACK CULTURE CENTER:** "Soul Video" will be presented at 6 p.m. at the Black Culture Center, 823 Virginia Ave.  
**ARTS AND SCIENCE ALUMNI BANQUET:** Event will be held at 6 p.m. at the Ramada Inn, 1100 Vandiver Drive. For ticket information call 882-4421.  
**MSA FILM:** "Sid and Nancy," rated R, will be shown at 7 and 9:30 p.m. in Ellis Aud. Cost: \$2.  
**GYMNASTICS:** Team will meet Oklahoma and Illinois State at 7:30 p.m. in the Hearnes Bldg. Cost: \$3 faculty/staff, \$2 students.  
**UNIVERSITY THEATER:** "The Importance of Being Earnest" will be presented at 8 p.m. in the Rhynsburger Theater. Cost: \$4.50 faculty/staff, \$2.50 students.  
**SEE THE STARS:** Weather permitting, the Laws Observatory on the roof of the Physics Bldg. will be open from 8-10 p.m.

**28 Saturday**

**ENGINEERS WEEK:** Event will continue on campus through March 7.  
**MISSOURI FIRE AND RESCUE TRAINING INSTITUTE:** Winter Fire School will be presented from 8 a.m.-5 p.m. today and from 8 a.m.-noon March 1 in General Classroom Bldg. and Arts and Science Bldg. Cost: \$25. Call 882-4735.  
**MEN'S BASKETBALL:** Team will play Iowa State at 3:10 p.m. in the Hearnes Bldg. Cost: \$5.50-\$8 faculty/staff, \$4-\$6 students.  
**CONCERT PREVIEW:** Michael Budds, musicologist, will preview tonight's concert at 7 p.m. in the Fine Arts Recital Hall.  
**MSA FILM:** "Sid and Nancy," rated R, will

**3 1/2" Diskette Filing Tray—**



Stock # 133A \$15.18

**No department should be without it.**

General Stores' new 3 1/2" diskette tray makes organizing your department's information a breeze. The tray holds 60 diskettes, comes complete with 5 adjustable dividers and self-adhesive labels for quick identification. The unique internal design prevents read/write areas from touching any surfaces, and the

durable cover with built-in front handle keeps your diskettes dust-free and allows easy carrying. For extra security, this tray comes complete with lock and keys to protect valuable information. The 3 1/2" diskette filing tray from General Stores— an item no department should be without.

Check with us first

**General Stores**  
Office, janitorial and maintenance supplies  
**882-6906**  
from the can do crew

be shown at 7 and 9:30 p.m. in Ellis Aud. Cost: \$2.  
**CHANCELLOR'S FESTIVAL OF MUSIC:** "An Evening with Mozart," with Minoru Nojima, pianist, will be presented at 8 p.m. in Jesse Aud. Cost: \$11 faculty/staff, \$10 students.  
**UNIVERSITY THEATER:** "The Importance of Being Earnest" will be presented at 8 p.m. in the Rhynsburger Theater. Cost: \$4.50 faculty/staff, \$2.50 students.  
**MSA FILM:** "Brimstone and Treacle," rated R, will be shown at midnight in Ellis Aud. Cost: \$1.50.

**MARCH**

**1 Sunday**

**CONCERT PREVIEW:** Michael Budds, musicologist, will preview tonight's concert at 6:30 p.m. in the Fine Arts Recital Hall.  
**CHANCELLOR'S FESTIVAL OF MUSIC:** The St. Louis Symphony Orchestra, University Choral Union and guest soloists with Jere Lantz, conductor, will present Mozart's "Requiem" at 7:30 p.m. in Jesse Aud. Cost: \$10 faculty/staff, \$9 students.  
**MSA FILM:** "Mr. Smith Goes To Washington," not rated, will be shown at 8 p.m. in Memorial Union Aud. Cost: 50 cents.

**2 Monday**

**WOMEN'S CENTER:** Karen Fitzgerald, groups and counseling intern at the center and a doctoral candidate in counseling psychology, will present "Test Anxiety" at noon in the Women's Center, 1 Gentry Hall.  
**CPPC:** "See Yourself as Others See You," practice job interviews, will be held at 1:40, 2:40 and 3:40 p.m. at the Career Planning and Placement Center, 110 Noyes Hall.  
**CAMPUS COMPUTING SHORT COURSE:** "Introduction to Lotus 1-2-3" will be held from 2:40-4:30 p.m. through March 6 in 106 Lefevre Hall. To enroll call 882-2112.  
**BIOCHEMISTRY SEMINAR SERIES:** David B. Bylund, associate professor of pharmacology, will present "a-2 Adrenergic Receptors: Classification and Mechanism of Action" at 3:40 p.m. in 322 Chemistry Bldg. Refreshments will be served at 3:30 p.m.  
**CPPC:** "Orientation to Career Planning and Placement Services" will be held from 4-5 p.m. in 110 Noyes Hall.  
**FACULTY RECITAL SERIES:** Esterhazy Quartet will perform at 8 p.m. in the Fine Arts Recital Hall.  
**MSA FILM:** "Juliet of the Spirits," not rated, will be shown at 8 p.m. in Memorial Union Aud. Cost: \$1.



MARCH

## 3 Tuesday

**SEMINAR:** Special Education Materials Conference will be held from 8 a.m.-5 p.m. today and March 4 in 336 Hearnes Bldg. Cost: \$18. Call 882-8253.

**INTRAMURALS:** Pickleball doubles entries will open today and end March 24. Play begins March 31. Register at 106 Rothwell Gymnasium. Minimum fee. Call 882-2066.

**CONFERENCE:** The Student Professional Awareness Conference sponsored by the Institute of Electrical and Electronics Engineers will be held from 8:45 a.m.-4 p.m. in Memorial Union Aud. For cost call 874-2116 or 443-4572.

**SEMINAR:** A workshop on how to prepare an entry for the Best of Missouri's Hands catalog will be held from 1-9 p.m. at the Memorial Union. Cost: \$10 per person, \$17 for couples or business partners. To register contact a county extension office.

**STAFF FOR LIFE WELLNESS PROGRAM:** "Back Talk: All About Your Back" will be presented from 6-9 p.m. in 226 School of Nursing. Cost: \$5. To register call 882-3880.

**CPPC ADULT EVENING SEMINAR:** "Active Job Hunt Strategies" will be held from 7-9 p.m. at the Career Planning and Placement Center, 220 Noyes Hall.

## 4 Wednesday

**INTRAMURALS:** Tennis challenge ladder entries open today and close April 1 for play that begins April 8. Register at 106 Rothwell Gymnasium. Minimum fee.

**MIDDAY GALLERY TALK:** Kathleen Slane, associate professor of art history and archaeology, will present "The New Arretine Bowl in the Ancient Gallery" at 12:25 p.m. in Pickard Hall.

**OPEN OFFICE HOURS:** Provost Lois DeFleur will hold open office hours from 3-5 p.m. in 114 Jesse Hall for one-on-one discussions with faculty, staff and students.

**BLACK CULTURE CENTER:** Black Greek Forum will be held at 7 p.m. at the Black Culture Center, 823 Virginia Ave.

**WOMEN'S CENTER:** "What's a Mother to Do" will be presented at 7 p.m. at the Women's Center, 1 Gentry Hall.

**STUDENT ENSEMBLE SERIES:** Studio Jazz Ensemble and Jazz Lab Band with Jeffrey Lemke, director, will perform at 8 p.m. in Jesse Aud.

**UNIVERSITY THEATER:** "The Importance of Being Earnest" will be presented at 8 p.m. in the Rhynsburger Theater. Cost: \$4.50 faculty/staff, \$2.50 students.

**LECTURE:** James Watt, former secretary of the Department of the Interior, will speak at 8 p.m. in Middlebush Aud.

**MSA FILM:** "Alien," rated R, will be shown at 8 p.m. in Ellis Aud. Cost: \$1.

## 5 Thursday

**SCHOOL OF NURSING CONTINUING EDUCATION PROGRAM:** Charlotte K. Eliopoulos, author and nurse consultant, and James A. Reynolds, editor, RN magazine, will present "Writing for Publication" from 8 a.m.-4:30 p.m. at the Holiday Inn West, 1900 I-70 Drive S.W. Cost: \$50. Call 882-0216.

**BASEBALL:** Team will play William Jewell at 1:30 p.m. at Simmons Field. Cost: \$2 faculty/staff, \$1 students.

**MASTER CLASS SERIES:** Paula Robison, flutist, will lead the class at 2:40 p.m. in the Fine Arts Recital Hall.

**FACULTY COUNCIL:** Group will meet at 3:40 p.m. in S110 Memorial Union.

**HONORS THREE CULTURES LECTURE:** Allen Bluedorn, associate professor of management, will speak on "Who Says We Should: A Discussion of Normative Statements" at 4 p.m. in Memorial Union Aud.

**WOMEN'S CENTER:** Betty Scott, professor of music, will present "The Way We Were" at 7 p.m. in the Women's Center, 1 Gentry Hall.

**UNIVERSITY THEATER:** "The Importance of Being Earnest" will be presented at 8 p.m. in the Rhynsburger Theater. Cost: \$4.50 faculty/staff, \$2.50 students.

## 6 Friday

**CONFERENCE:** The 11th annual "Land Surveyor's Conference" will be held today and March 7 on campus. Cost: \$125. To register call 882-3266.

**CONFERENCE:** Second "Missouri Eating Disorders Conference" will begin at 3:30 p.m. and continue March 7 at the Columbia Hilton Inn, 2200 I-70 Dr. S.W. Keynote speaker is Arnold Andersen of John Hopkins Hospital. Cost: \$50, students \$20. Call 876-8000.

**ENGINEERS WEEK:** Knighting Ceremony will be held at 5 p.m. on Francis Quadrangle.

**CONCERT PREVIEW:** Michael Budds, musicologist, will preview tonight's concert at 7 p.m. in the Fine Arts Recital Hall.

**ENGINEERING BANQUET:** Missouri Honor Awards for Distinguished Service will be presented at 7:15 p.m. banquet at the Columbia Hilton Inn, 2200 I-70 Drive S.W. Cost: \$13. Call 882-0917.

**CONCERT SERIES:** Eliot Fisk, guitarist, and Paula Robison, flutist, will perform at 8 p.m. in Jesse Aud. Cost: \$13 faculty/staff, \$12 students.

**UNIVERSITY THEATER:** "The Importance of Being Earnest" will be presented at 8 p.m. in the Rhynsburger Theater. Cost: \$4.50 faculty/staff, \$2.50 students.

**MSA FILM:** "Aliens," rated R, will be shown at 7 and 9:45 p.m. in Ellis Aud. Cost: \$2.

**SEE THE STARS:** Weather permitting, the Laws Observatory on the roof of the Physics Bldg. will be open from 8-10 p.m.

## 7 Saturday

**SEMINAR:** "Hearing Impaired Reading Symposium" will be held from 8 a.m.-5 p.m. at Townsend Hall. Call 882-8253.

**BASEBALL:** Team will meet Iowa at noon at Simmons Field. Cost: \$2 faculty/staff, \$1 students.

**MSA FILM:** "Aliens," rated R, will be shown at 7 and 9:45 p.m. in Jesse Aud. Cost: \$2.

**GYMNASTICS:** Team will meet Denver at 7:30 p.m. in the Hearnes Bldg. Cost: \$3 faculty/staff, \$2 students.

**UNIVERSITY THEATER:** "The Importance of Being Earnest" will be presented at 8 p.m. in the Rhynsburger Theater. Cost: \$4.50 faculty/staff, \$2.50 students.

**GUEST ARTIST SERIES:** Daniel Schene, pianist, will perform at 8 p.m. in the Fine Arts Recital Hall.

## 8 Sunday

**BASEBALL:** Team will meet Iowa at 12:30 p.m. at Simmons Field. Cost: \$2 faculty/staff, \$1 students.

**STUDENT ENSEMBLE SERIES:** Symphony Band with Dale Kennedy, conductor, will perform at 3 p.m. in Jesse Aud.

**MSA FILM:** "Cabinet of Dr. Caligari," not rated, will be shown at 8 p.m. in Memorial Union Aud. Cost: 50 cents.

## 9 Monday

**INTRAMURALS:** Sunday league softball entries open today and end March 25 for play that begins April 5. Register at 106 Rothwell Gymnasium. Minimum fee.

**WOMEN'S CENTER:** Nancy Ellerman, adult evening program specialist at the Career Planning and Placement Center, will present "Putting Your Best Foot Forward" at noon in the Women's Center, 1 Gentry Hall.

**CAMPUS COMPUTING SHORT COURSE:** "Introduction to DisplayWrite" will be held from 2:40-4:30 p.m. through March 13 in 106 Lefevre Hall. To enroll call 882-2112.

**BIOCHEMISTRY SEMINAR SERIES:** Fun Sun Chu of the Department of Food Microbiology and Toxicology at the University of Wisconsin will present "Immunoassays for Small Molecular Weight Toxins" at 3:40 p.m. in 322 Chemistry Bldg. Refreshments will be served at 3:30 p.m.

**STAFF FOR LIFE WELLNESS PROGRAM:** Six-week aerobic exercise for beginners will begin today from 5:30-6:30 p.m. in the Rock Quarry Center dining room. Cost: \$25. To enroll call 882-3880.

**WOMEN STUDIES WINTER COLLOQUIUM:** Dina Copelman, assistant professor of history, will present "The Products of an Intense Civilization: Women Teachers in Late Victorian London" at 7:30 p.m. in S7 Memorial Union.

**FACULTY RECITAL SERIES:** Eva Szekely, violinist, and Daniel Schene, pianist, will perform at 8 p.m. in the Fine Arts Recital Hall.

**MSA FILM:** "Romeo and Juliet," rated G, will be shown at 8 p.m. in Memorial Union

Aud. Cost: \$1.

## 10 Tuesday

**SCHOOL OF NURSING CONTINUING EDUCATION PROGRAM:** Maureen Brown, instructor, will present "Increasing Skills for Nursing Assessment" from 8 a.m.-4:30 p.m. today and March 11 at Southeast Missouri State University, Cape Girardeau, Mo. For cost call 882-0216.

**MILITARY PICTURES OF THE YEAR COMPETITION:** Event will be held from 8:30 a.m.-4:30 p.m. today and March 11 in Gannett Forum.

**SEMINAR:** "Cattle Backgrounding and Feeding Seminar" will be held today at Trowbridge Livestock Center. Cost: \$25. Call 882-8253.

**SEMINAR:** "Computers on the Farm" will be held from noon today until noon March 11 at the Ramada Inn, 1100 Vandiver Drive. Cost: \$25-40. Call 882-8253.

**BASEBALL:** Team will play Evangel at 1:30 p.m. at Simmons Field. Cost: \$2 faculty/staff, \$1 students.

**CPPC:** "See Yourself as Others See You," practice job interviews, will be held at 1:40, 2:40 and 3:40 p.m. at the Career Planning and Placement Center, 110 Noyes Hall.

**CPPC:** "Orientation to Career Planning and Placement Center Services" will be held from 4-5 p.m. in 110 Noyes Hall.

**STAFF FOR LIFE WELLNESS PROGRAM:** Six-week exercise for the fun of it class will begin today from 5:30-6:30 p.m. at various campus locations. Cost: \$25. To enroll call 882-3880.

**CPPC ADULT EVENING SEMINAR:** "Resume Writing: Marketing Yourself On Paper" will be held from 7-9 p.m. at the Career Planning and Placement Center, 220 Noyes Hall.

## 11 Wednesday

**SCHOOL OF NURSING CONTINUING EDUCATION PROGRAM:** James D. Dexter, professor and chair of the Department of Neurology, will present "Stages of Sleep and Sleep Deprivation" from 8:30 a.m.-noon at the Columbia Hilton, 2200 I-70 Drive S.W. Cost: \$20. Call 882-0216.

**FORAGE DAY:** Event will be held from 10 a.m.-5 p.m. at the Livestock Center. Cost: \$15. Call 882-8253.

**MIDDAY GALLERY TALK:** Morteza Sajadian, assistant director of the Museum of Art and Archaeology, will present "Ancient Glass-blowing Techniques" at 12:25 p.m. in Pickard Hall.

**PSYCHIATRY COLLOQUIUM:** Robert Miller, clinical associate professor of psychiatry and lecturer in law at the University of Wisconsin-Madison, will present "Developments in Civil Commitment" at 1 p.m. in the Truman Veterans Hospital Aud.

**OPEN OFFICE HOURS:** Provost Lois DeFleur will hold open office hours from 3-5 p.m. in 114 Jesse Hall for one-on-one discussions with faculty, staff and students.

**BLACK CULTURE CENTER:** Career Forum will be held at 6 p.m. at the Black Culture Center, 823 Virginia Ave.

**WOMEN'S CENTER:** Dorothy Haecker, director of women studies; Frances Jones-Sneed, research associate in the Graduate School; and students will present "Women, Race and Class" at 7 p.m. in the Women's Center, 1 Gentry Hall.

**STUDENT ENSEMBLE SERIES:** Concert Band with J. Russell Laib, conductor, will perform at 8 p.m. in Jesse Aud.

**MSA FILM:** "Bus Stop," not rated, will be shown at 8 p.m. in Ellis Aud. Cost: \$1.

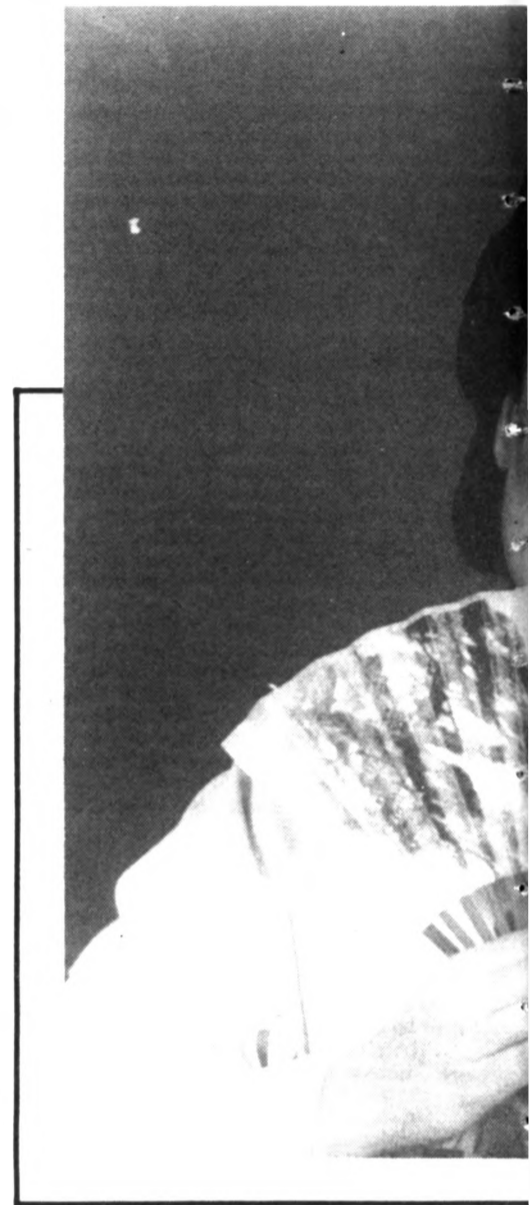
## 12 Thursday

**ART EDUCATORS ASSOCIATION CONFERENCE:** Event will be held through March 15 at the Adam's Mark Hotel, Kansas City. Cost: \$25-\$45, students \$20-\$30. Call 882-8253.

**WOMEN'S CENTER:** Kathy Berry, graduate student in counseling psychology, will present "Gifted Women: Developmental Issues and Contemporary Concerns" at noon in the Women's Center, 1 Gentry Hall.

**STAFF COUNCIL:** Group will meet at 1:15 p.m. in S206 Memorial Union.

**HONORS THREE CULTURES LECTURE:** Robert Denhardt, professor of public administration, and Michael Diamond, assistant professor of public administration, will speak on "In the Shadow of



Organizations: People in Formal Groups" at 4 p.m. in Memorial Union Aud.  
**ENVIRONMENTAL ENGINEERING SEMINAR:** John R. Jones, forestry, fisheries and wildlife professor, will present "Overview of the Limnology of Lake Ozark" from 7:30-9:30 p.m. in S203 Memorial Union.  
**STUDENT ENSEMBLE SERIES:** Brass Choir with Betty Scott, director, will perform at 8 p.m. in Jesse Aud.

## 13 Friday

**SPRING RECESS BEGINS** at close of day.  
**HIGH SCHOOL JOURNALISM AWARDS DAY SELECTION COMMITTEE:** Committee will meet from 8 a.m.-4 p.m. in Gannett Forum.

**SEE THE STARS:** Weather permitting, the Laws Observatory on the roof of the Physics Bldg. will be open from 8-10 p.m.

## 15 Sunday

**FOURTH ANNUAL MISSOURI ASSOCIATION OF COUNTY COMMISSIONERS:** Group will meet through March 17 at the Hilton Inn, 2200 I-70 Drive S.W. Cost: \$40. Call 882-8253.  
**STADLER GENETICS SYMPOSIUM:** Event will be held from 8 a.m.-5 p.m. through March 17 at Memorial Union. Cost: \$75. Call 882-8253.  
**GRADUATE-FACULTY SENATE:** Executive committee will meet at 3:40 p.m. in S208 Memorial Union.

## 16 Monday

**SCHOOL OF NURSING CONTINUING EDUCATION PROGRAM:** Carol Yonkman, instructor, will present "Nursing Management of the Patient with Ventilatory Support" from 4-8 p.m. at the Macon (Mo.) Area Vo-Tech School. Cost: \$17. Call 882-0216.





## Observe or serve

Warm up with the Concert Series' March 30 presentation of Puccini's *Madama Butterfly* in Jesse Auditorium. Louisa Jonason, left, plays the lead role. Intramurals, above, are popular at Rothwell Gymnasium. Faculty and staff may sign up for fun and exercise.

**CPCC:** "Your Resume: Write It Right" will be presented from 3:45-5 p.m. at the Career Planning and Placement Center, 220 Noyes Hall.

**HONORS THREE CULTURES LECTURE:** Dorothy Haecker, director of women studies, will speak on "The Human as Scientific Object" at 4 p.m. in Memorial Union Aud.

## 27 Friday

**MID-AMERICA TEACHERS OF ENGLISH TO SPEAKERS OF OTHER LANGUAGES:** Group will meet at the Memorial Union. Cost: \$26-\$31. Call 882-8253.

**ALUMNI SEMINAR WEEKEND:** "Communication: the Minds, the Media and the Messages" will be presented through March 29. Cost: \$95, which includes four meals, programs and campus transportation. For reservations call 882-6611.

**CPCC:** "Your Job Interviews: Are You Ready?" will be presented from 3:45-5 p.m. at the Career Planning and Placement Center, 220 Noyes Hall.

**BLACK CULTURE CENTER:** "Soul Video" will be presented at 6 p.m. at the Black Culture Center, 823 Virginia Ave.

**BIG EIGHT GYMNASTICS CHAMPIONSHIP:** Event will be held at 7 p.m. in the Hearnes Bldg. Cost: \$3 faculty/staff, \$2 students.

**MSA FILM:** "A Room With A View," rated PG-13, will be shown at 7 and 9:30 p.m. in Ellis Aud. Cost: \$2.

**CONCERT SERIES:** Cleo Laine and John Dankworth performance is cancelled. Tickets may be returned to the Jesse Hall Box Office prior to March 15 for a refund or by Feb. 2 to exchange for another event.

**OPERA PREVIEW:** Michael Budds, musicologist, will preview the March 30 performance of Puccini's "Madama Butterfly" at 7:30 p.m. in the N201-202 Memorial Union. Cost: \$5.

**SEE THE STARS:** Weather permitting, the Laws Observatory on the roof of the Physics Bldg. will be open from 8-10 p.m.

## 28 Saturday

**WOMEN'S CENTER:** Laura Hacquard, Women's Center coordinator, and Karen Fitzgerald, groups and counseling intern at the center and a doctoral candidate in counseling psychology, will present "Assertion Training for Trainers" from 9 a.m.-4 p.m. in the Women's Center, 1 Gentry Hall. Call 882-6549 to register.

**BASEBALL:** Team will play Kansas at noon at Simmons Field. Cost: \$2 faculty/staff, \$1 students.

**STUDENT CONCERT:** Student soloists with Virginia Pyle and Dan Willett, coordinators, will present a "Concert of Baroque Arias" at 7 p.m. in the Fine Arts Recital Hall.

**MSA FILM:** "A Room With A View," rated PG-13, will be shown at 7 and 9:30 p.m. in Jesse Aud. Cost: \$2.

## 29 Sunday

**PENNEY-MISSOURI NEWSPAPER WORKSHOP:** Workshop will be held from 8:30 a.m.-5 p.m. through April 3 at the Holiday Inn West, 1900 I-70 Drive S.W. Call 882-7771.

**STAFF RECOGNITION WEEK STAFF ART COMPETITION:** Entries will be displayed through April 10 in the Brady Commons Gallery.

**BASEBALL:** Team will play Kansas at 12:30 p.m. at Simmons Field. Cost: \$2 faculty/staff, \$1 students.

**MSA FILM:** "It Happened One Night," not rated, will be shown at 8 p.m. in Memorial Union Aud. Cost: 50 cents.

## 30 Monday

**WOMEN'S CENTER:** Nanette Laughrey, associate professor of law, will present "Women Under Missouri Law" at noon in the Women's Center, 1 Gentry Hall.

**CAMPUS COMPUTING SHORT COURSE:** "Introduction to Wordperfect" will be held from 2:40-4:30 p.m. through April 3 in 106 Lefevre Hall. To enroll call 882-2112.

**BIOCHEMISTRY SEMINAR SERIES:** Gordon G. Hammes of the Department of Chemistry at Cornell University will present

## MARCH 18 Wednesday

**MISSOURI LAND TITLE INSTITUTE:** Event will be held through March 20 at the Hilton Inn, 2200 I-70 Drive S.W. Cost: \$35-\$60. Call 882-8253.

**PSYCHIATRY FACULTY PRESENTATION:** Syed Arshad Husain, professor of child psychiatry, and Donna Haley, clinical instructor in psychiatry, will present "Cognitive and Emotional Development of Gifted Children" at 1 p.m. in the Truman Veterans Hospital Aud.

**OPEN OFFICE HOURS:** Provost Lois DeFleur will hold open office hours from 3-5 p.m. in 114 Jesse Hall for one-on-one discussions with faculty, staff and students.

## 20 Friday

**GYMNASTICS:** Team will meet Iowa State at 7:30 p.m. in the Hearnes Bldg. Cost: \$3 faculty/staff, \$2 students.

**SEE THE STARS:** Weather permitting, the Laws Observatory on the roof of the Physics Bldg. will be open from 8-10 p.m.

## 22 Sunday

**MISSOURI ASSOCIATION OF SECONDARY SCHOOL PRINCIPALS:** Group will meet through March 24 at the Lodge of the Four Seasons, Lake Ozark, Mo. Call 882-8253.

## 23 Monday

**CLASSES RESUME** at 7:40 a.m.  
**INTRAMURALS:** Rec-aerobics/water exercise will begin today. Call 882-2066.

**ENGINEERING SHORT COURSE:** "Advanced Water Treatment" will be presented today and March 24 at the Hearnes Bldg. Cost: \$100; after March 2, \$105. Call 882-2087 to register.

**CAMPUS COMPUTING SHORT COURSE:** "Introduction to dBase III Plus" will be

held from 2:40-4:30 p.m. through March 27 in 106 Lefevre Hall. To enroll call 882-2112.

**BIOCHEMISTRY SEMINAR SERIES:** John Ding of the E. Young Laboratory of Cellular Physiology and Immunology at Rockefeller University will present "Cell-Mediated Killing: A General Mechanism?" at 3:40 p.m. in 255 Nursing School. Refreshments will be served at 3:30 p.m.

**MSA FILM:** "Five Easy Pieces," not rated, will be shown at 8 p.m. in Memorial Union Aud. Cost: \$1.

**FACULTY RECITAL SERIES:** Carolyn Kenneson, violist, and George Darden, pianist, will perform at 8 p.m. in the Fine Arts Recital Hall.

## 24 Tuesday

**SCHOOL OF NURSING CONTINUING EDUCATION PROGRAM:** Maureen Brown, instructor, will present "Increasing Skills for Nursing Assessment" from 8 a.m.-4:30 p.m. at Southeast Missouri State University, Cape Girardeau. For cost call 882-0216.

**CPCC:** "Orientation to Career Planning and Placement Center Services" will be held from 4-5 p.m. in 110 Noyes Hall.

**CPCC ADULT EVENING SEMINAR:** "The Job Interview: Marketing Yourself In Person" will be held from 7-9 p.m. at the Career Planning and Placement Center, 220 Noyes Hall.

## 25 Wednesday

**MIDDAY GALLERY TALK:** Lois Shelton, academic coordinator of the Museum of Art and Archaeology, will present "El Greco and 'The Annunciation'" at 12:25 p.m. in Pickard Hall.

**PSYCHIATRY COLLOQUIUM:** Kathryn Shear of the Payne-Whitney Psychiatric Clinic at New York Hospital will present "Research Findings in Psychotherapy and Panic Disorders" at 1 p.m. in the Truman Veterans Hospital Aud.

**CPCC:** "See Yourself As Others See You," practice job interviews, will be held at 1:40, 2:40 and 3:40 p.m. at the Career Planning and Placement Center, 110 Noyes Hall.

**BASEBALL:** Team will play Central Missouri

State University at 2 p.m. at Simmons Field. Cost: \$2 faculty/staff, \$1 students.

**OPEN OFFICE HOURS:** Provost Lois DeFleur will hold open office hours from 3-5 p.m. in 114 Jesse Hall for one-on-one discussions with faculty, staff and students.

**BLACK CULTURE CENTER:** "Male/Female Relationships" will be presented at 6 p.m. at the Black Culture Center, 823 Virginia Ave.

**WOMEN'S CENTER:** Rita Tadych, doctoral candidate in counseling psychology and manager of the Counseling Center Stress Lab, will present "All Stressed Up and No Place To Go" at 7 p.m. in the Women's Center, 1 Gentry Hall.

**FACULTY RECITAL SERIES:** Larry Lowe, horn, and Nora Hulse, pianist, will perform at 8 p.m. in the Fine Arts Recital Hall.

**MSA FILM:** "All About Eve," not rated, will be shown at 8 p.m. in Ellis Aud. Cost: \$1.

**MSA THEATER PRESENTATION:** The National Shakespeare Co. will present "The Taming of the Shrew" at 8 p.m. in Jesse Aud. For ticket information call 882-8386.

## 26 Thursday

**WOMEN'S CENTER:** Kathie Reid, consultant in the Women's Cancer Control Program of the Cancer Research Center, will present "Your Cancer IQ" at noon in the Women's Center, 1 Gentry Hall.

**STAFF COUNCIL:** Group will meet at 1:15 p.m. in S206 Memorial Union.

**BASEBALL:** Team will play Southeast Missouri State University at 2 p.m. at Simmons Field. Cost: \$2 faculty/staff, \$1 students.

**FACULTY COUNCIL:** Group will meet at 3:40 p.m. in S110 Memorial Union.





# Art Exhibit and Auction

SATURDAY, JANUARY 31, 1987

Lobby Concourse  
University Hospital and Clinics  
Exhibit: 6:30 p.m. • Auction: 7:30 p.m.

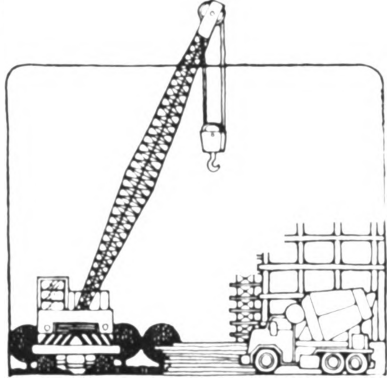
Come to an exciting exhibit and auction of fine art from all over the world. Original oils, watercolors and graphics by exciting young talents and internationally famous artists will be featured.

Sponsored by Hospital Staff Council of University of Missouri-Columbia Hospital and Clinics, the event is a fundraiser for the Children's Miracle Network Telethon. Proceeds will go to help sick children at UMC Hospital and Clinics.

For more information call 882-1586.

**Hospital & Clinics**  
Children's Miracle Network Telethon

*The Staff for Life*



## Ag Science Week

scheduled for Feb. 2-6, will draw a large number of guests to campus. Users of the Trowbridge Shuttle are asked to park in the east section of AV6 on Wednesday, February 4, during the Ag Day Barbecue. All employees going to the barbecue are encouraged to use the shuttle to go to Trowbridge Livestock Center.

Your help will add to the success of Ag Science Week.

Mark your calendar to attend one of the public hearings on the campus master plan Feb. 8-10.

**Parking & Transportation Services**  
107 Swallow Hall  
882-4568

"Structure and Function of a Membrane Bound Enzyme: Chloroplast Coupling Factor" at 3:40 p.m. in 322 Chemistry Bldg. Refreshments will be served at 3:30 p.m.

**CRAFT STUDIO:** Basic photography classes will be held from 6:30-9 p.m. Mondays through April 20 in 203 Brady Commons. Basketry classes will be held from 6:30-9 p.m. Mondays through April 20 in 203 Brady Commons. Pot throwing classes will be held from 6:30-9 p.m. Mondays through April 20 in 203 Brady Commons. Call 882-2889.

**CONCERT SERIES:** The New York City Opera National Company will perform "Madama Butterfly" by Puccini at 8 p.m. in Jesse Aud. Cost: \$16 faculty/staff, \$15 students.

## MARCH 31 Tuesday

**BEST OF MISSOURI HANDS CATALOG:** Application forms are due today to be considered for the second Best of Missouri Hands catalog. For more information contact a county extension center or write Edie Pigg, project coordinator, at 628 Clark Hall.

**SCHOOL OF NURSING CONTINUING EDUCATION PROGRAM:** Ann Kellett, Law School student and clerk in a Jefferson City law firm, will present "Current Legal Issues in Gerontology" from 8:30 a.m.-4:30 p.m. at Southeast Missouri State University in Cape Girardeau. For cost call 882-0216.

**BASEBALL:** Team will play Northwest Missouri State University at 1:30 p.m. at Simmons Field. Cost: \$2 faculty/staff, \$1 students.

**CRAFT STUDIO:** Intermediate photography classes will be held from 6:30-9 p.m. Tuesdays through April 21 in 203 Brady Commons. Cartooning classes will be held from 6:30-9 p.m. Tuesdays through April 21 in 203 Brady Commons. Call 882-2889.

**WOMEN'S CENTER:** Joyce Schulte, pain and stress specialist, will present "Grief and the College Student" at 7 p.m. in the Women's Center, 1 Gentry Hall.

**MSA FILM:** "On The Waterfront," not rated will be shown at 8 p.m. in Memorial Union Aud. Cost: \$1.

## APRIL

### 1 Wednesday

**SYMPOSIUM ON PLANT BIOCHEMISTRY AND PHYSIOLOGY:** Event will begin at noon and continue through April 3 at the Memorial Union. Cost: \$30, which does not include meals. Call 882-8253.

**WOMEN'S CENTER:** Michael Johnson, doctoral candidate in counseling psychology, will present "Humor and Gender" at noon in the Women's Center, 1 Gentry Hall.

**MIDDAY GALLERY EVENT:** The Missouri Arts Quintet will perform at 12:25 p.m. in Pickard Hall.

**PSYCHIATRY COLLOQUIUM:** Lisa Renner, audiologist at the University Hospital and Clinics, will present "Central Auditory Processing Disorders in Children" at 1 p.m. in the Truman Veterans Hospital Aud.

**WOMEN'S SOFTBALL:** Team will play William Woods College at 2 p.m. at University Field.

**OPEN OFFICE HOURS:** Provost Lois DeFleur will hold open office hours from 3-5 p.m. in 114 Jesse Hall for one-on-one discussions with faculty, staff and students.

**CPPC:** "Choice or Chance? Deciding Your

Academic Major and Career" will be held from 3:45-5 p.m. at the Career Planning and Placement Center, 220 Noyes Hall.

**BLACK CULTURE CENTER:** "Black Male Relationships" will be presented at 6 p.m. at the Black Culture Center, 823 Virginia Ave.

**CRAFT STUDIO:** Weaving classes will be held from 6:30-9 p.m. Wednesdays through May 1 in 203 Brady Commons. Sumie classes will be held from 6:30-9 p.m. Wednesdays through May 1 in 203 Brady Commons. Stained glass classes will be held from 6:30-9 p.m. Wednesdays through May 1 in 203 Brady Commons. Call 882-2889.

**MSA FILM:** "Whatever Happened to Baby Jane?" not rated, will be shown at 8 p.m. in Ellis Aud. Cost: \$1.

**MSA SPECIAL EVENT:** Hypnotist Tom DeLuca will perform at 8 p.m. in Jesse Aud. For cost call 882-8386.

### 2 Thursday

**WOMEN'S CENTER:** Luci Lee, doctoral candidate in counseling psychology, will present "Sexual Harrassment" at noon in the Women's Center, 1 Gentry Hall.

**CPPC:** "See Yourself As Others See You," practice job interviews, will be held at 1:40, 2:40 and 3:40 p.m. at the Career Planning and Placement Center, 110 Noyes Hall.

**FACULTY COUNCIL:** Group will meet at 3:40 p.m. in S110 Memorial Union.

**MARION S. DEWESE VISITING LECTURESHIP:** Lewis Flint, professor and chair of the Department of Surgery at State University of New York, will speak on "Why Study Shock?" at 4 p.m. in MA215 Health Sciences Center.

**CPPC:** "Orientation to Career Planning and Placement Center Services" will be held from 4-5 p.m. in 110 Noyes Hall.

**BLACK CULTURE CENTER:** "Black Female Relationships" will be presented at 6 p.m. at the Black Culture Center, 823 Virginia Ave.

**CRAFT STUDIO:** Pot throwing classes will be held from 6:30-9 p.m. Thursdays through May 2 in 203 Brady Commons. Calligraphy classes will be held from 6:30-9 p.m. Thursdays through May 2 in 203 Brady Commons. Call 882-2889.

### 3 Friday

**THIRD ANNUAL EQUAL OPPORTUNITY AWARENESS WEEK AWARDS CEREMONY:** Event will be held from 11 a.m.-noon in N201-202 Memorial Union.

**MASTER CLASS SERIES:** The Beaux Arts Trio with Walter Trampler, violist, will lead the class at 2:40 p.m. in the Fine Arts Recital Hall.

**CONCERT SERIES:** The Beaux Arts Trio will perform at 8 p.m. in Jesse Aud. Cost: \$12 faculty/staff, \$11 students.

**MSA FILM:** "Top Gun," rated PG, will be shown at 7 and 9:30 p.m. in Ellis Aud. Cost: \$2.

**SEE THE STARS:** Weather permitting, the Laws Observatory on the roof of the Physics Bldg. will be open from 8-10 p.m.

**MSA FILM:** "True Stories," rated PG, will be shown at midnight in Ellis Aud. Cost: \$1.50.

### 4 Saturday

**WOMEN'S CENTER:** Mary Boyd, financial planning consultant, will present "Financial Planning" at 9 a.m. in the Women's Center, 1 Gentry Hall. Call 882-6549 to register.

**MSA FILM:** "True Stories," rated PG, will be shown at 2 p.m. in Ellis Aud. Cost: \$2.

**CRAFT STUDIO:** Children's Workshop will be held from 6:30-9 p.m. Saturdays through May 2 in 203 Brady Commons. Call 882-2889.

**MSA FILM:** "Top Gun," rated PG, will be shown at 7 and 9:30 p.m. in Jesse Aud. Cost: \$2.

**MSA FILM:** "True Stories," rated PG, will be shown at midnight in Ellis Aud. Cost: \$1.50.

### 5 Sunday

**SEMINAR:** Midwest Symposium on Therapeutic Recreation will be held through April 7 at the Henry VIII Inn, St. Louis. Cost: \$55 Sunday only, \$65 Monday and Tuesday, and \$105 for three days. Call 882-8253.

**MSA FILM:** "True Stories," rated PG, will be

shown at 2 p.m. in Ellis Aud. Cost: \$2.

**MSA FILM:** "Foreign Correspondent," not rated, will be shown at 8 p.m. in Memorial Union Aud. Cost: 50 cents.

### 6 Monday

**STAFF RECOGNITION WEEK:** "Mizzou Showcase" will continue through April 10.

**STAFF RECOGNITION WEEK CAMPUS TOUR:** A tour of University Printing Services will be available at 10 a.m. and 2 p.m. Call 882-6894 for reservations.

**STAFF RECOGNITION WEEK VARIETY SHOW:** Event will be held from noon-1 p.m. in Jesse Aud. Seating available at 11:30 a.m.

**WOMEN'S CENTER:** Karen Stout, assistant professor of social work, will present "Femicide: The Killing of Women by Male Partners" at noon in the Women's Center, 1 Gentry Hall.

**CAMPUS COMPUTING SHORT COURSE:** "Introduction to ISSCO Graphics" will be held from 2:40-4:30 p.m. through April 10 in 106 Lefevre Hall. To enroll call 882-2112.

**BIOCHEMISTRY SEMINAR SERIES:** Mark A. McIntosh, associate professor of microbiology, will present "Molecular Characterization of Bacterial Iron Transport" at 3:40 p.m. in 322 Chemistry Bldg. Refreshments will be served at 3:30 p.m.

**WOMEN STUDIES COLLOQUIUM:** Dorothy Haecker, director of women studies, will present "Feminist Objectivity" at 7:30 p.m. in S7 Memorial Union.

**FACULTY RECITAL SERIES:** Missouri Arts Quintet will perform at 8 p.m. in the Fine Arts Recital Hall.

**MSA FILM:** "Death of a Cyclist," not rated, will be shown at 8 p.m. in Middlebush Aud. Cost: \$1.

### 7 Tuesday

**STAFF RECOGNITION WEEK CAMPUS TOUR:** Tours of the University Power Plant will be available at 10 a.m., 2 p.m. and 3 p.m. Call 882-6894 for reservations.

**STAFF RECOGNITION WEEK LECTURE:** Mary Ann Tipton, manager of UM Employee Benefits, and David West, professor of finance, will present "Financial Planning--Looking Ahead Toward Retirement" at noon in M640 Medical Science Bldg.

**STAFF RECOGNITION WEEK LECTURE:** Wayne P. Anderson, professor of psychology, will present "Sex Over 40 (or 20, or 30)" at noon in 1 Arts and Science Bldg.

**WOMEN'S SOFTBALL:** Team will play Columbia College at 2 p.m. at University Field.

**LECTURE:** John Foley, professor of English and director of the Center for Studies in Oral Tradition, will present "Our Girls Used to Marry Boys Over There" at 5:30 p.m. in the Missouri Cultural Heritage Center gallery, Conley House second floor. Reception will be held at 5 p.m.

**CPPC ADULT EVENING SEMINAR:** "Women in the Workplace: Assertion on the Job" will be held from 7-9 p.m. at the Career Planning and Placement Center, 220 Noyes Hall.

### 8 Wednesday

**SCHOOL OF NURSING CONTINUING EDUCATION PROGRAM:** Mary Johnson, clinical nurse specialist in the division of nursing services at the University Hospital and Clinics, will present "Management of Pain" from 8:30 a.m.-noon at the Columbia Hilton, 2200 I-70 Drive S.W. Cost: \$20. Call 882-0216.

**STAFF RECOGNITION WEEK CAMPUS TOUR:** Tours of the University Research Reactor will be available at 10 a.m. and 2 p.m. Call 882-6894 for reservations.

**STAFF RECOGNITION WEEK RECREATION AND SAFETY SHOW:** Event will be held from 11:30 a.m.-1:30 p.m. on the east side of the Hearnes Bldg.

**STAFF RECOGNITION WEEK RUN/WALK/WHEELCHAIR RACE:** Participants will meet at noon at Brewer Fieldhouse. Race will begin at 12:20 p.m.

**MIDDAY GALLERY TALK:** Marcus Rautman, assistant professor of art history



and archaeology, will present "A Lenten Offering: Liturgical Silver" at 12:25 p.m. in Pickard Hall.

**KENNETH F. STRUESSEL MEMORIAL LECTURE:** Gerald T. Perkoff, curators professor in the Department of Family and Community Medicine, will present "Rational Suicide: The Ultimate Refusal of Therapy" at 1 p.m. in the Truman Veterans Hospital Aud.

**WOMEN'S SOFTBALL:** Team will play Kansas at 2:30 p.m. at University Field.

**OPEN OFFICE HOURS:** Provost Lois DeFleur will hold open office hours from 3-5 p.m. in 114 Jesse Hall for one-on-one discussions with faculty, staff and students.

**CPPC:** "Orientation to Career Planning and Placement Center Services" will be held from 4-5 p.m. in 110 Noyes Hall.

**BASEBALL:** Team will play Missouri Western at 5 p.m. at Simmons Field. Cost: \$2 faculty/staff, \$1 students.

**WOMEN'S CENTER:** People United for Peace, a group of elementary school and high-school students, will discuss their thoughts and activities at 7 p.m. in the Women's Center, 1 Gentry Hall.

**STUDENT ENSEMBLE SERIES:** Trombone/Tuba Ensemble with Jeffrey Lemke, director, will perform at 8 p.m. in the Fine Arts Recital Hall.

**MSA FILM:** "My Dinner With Andre," rated PG, will be shown at 8 p.m. in Ellis Aud. Cost: \$1.

APRIL

## 9 Thursday

**SCHOOL OF NURSING CONTINUING EDUCATION PROGRAM:** Sixth annual Nursing Research Conference will be held from 7:30-9:30 a.m. today and 8 a.m.-4 p.m. tomorrow in the School of Nursing Bldg. Cost: \$55. Call 882-0216.

**MATHCOUNTS:** College of Engineering will sponsor the state mathematics contest for junior high school students at the Hearnes Bldg. Awards ceremony will be held at 2:30 p.m. Call 882-2423.

**STAFF RECOGNITION WEEK CAMPUS TOUR:** Tours of the University Hospital and Clinics will be available at 11 a.m. and 3 p.m. Call 882-6894 for reservations.

**STAFF RECOGNITION WEEK LECTURE:** Mary Ann Tipton, manager of UM Employee Benefits, and David West, professor of finance, will present "Financial Planning—Looking Ahead Toward Retirement" at noon in 1 Arts and Science Bldg.

**STAFF RECOGNITION WEEK LECTURE:** Wayne P. Anderson, professor of psychology, will present "Sex Over 40 (or 20, or 30)" at noon in M640 Medical Science Bldg.

**WOMEN'S CENTER:** Karen Fitzgerald, groups and counseling intern at the center and a doctoral candidate in counseling psychology, will present "You've Got It," a discussion of personal power, at noon in the Women's Center, 1 Gentry Hall.

**STAFF COUNCIL:** Group will meet at 1:15 p.m. in S206 Memorial Union.

**GRADUATE-FACULTY SENATE:** Executive committee will meet at 3:40 p.m. in S208 Memorial Union.

**CPPC:** "Choice or Chance? Deciding Your Academic Major and Career" will be held from 3:45-5 p.m. at the Career Planning and Placement Center, 220 Noyes Hall.

**BLACK CULTURE CENTER:** "Game Night" will be held at 6 p.m. at the Black Culture Center, 823 Virginia Ave.

**ENVIRONMENTAL ENGINEERING SEMINAR:** Ron Kucera, deputy director of the Missouri Department of Natural Resources, will present "Hazardous Waste Clean-up in Missouri" from 7:30-9:30 p.m. in S203 Memorial Union.

## 10 Friday

**CPPC:** "See Yourself As Others See You," practice job interviews, will be held at 1:40, 2:40 and 3:40 p.m. at the Career Planning and Placement Center, 110 Noyes Hall.

**STAFF RECOGNITION AWARDS CEREMONY:** Service awards, Staff Recognition awards and Mick Deaver Memorial award will be presented at 2 p.m. in Jesse Aud. A reception will follow.

**BLACK CULTURE CENTER:** "Soul Video" will be presented at 6 p.m. at the Black Culture Center, 823 Virginia Ave.

**MSA FILM:** "Lady and the Tramp," rated G, will be shown at 7 and 9:30 p.m. in Ellis Aud. Cost: \$2.

**SEE THE STARS:** Weather permitting, the Laws Observatory on the roof of the Physics Bldg. will be open from 8-10 p.m.

## 11 Saturday

**MSA FILM:** "Lady and the Tramp," rated G, will be shown at 2 p.m. in Memorial Union Aud. and at 7 and 9:30 p.m. in Ellis Aud. Cost: \$2.

## 12 Sunday

**MSA FILM:** "The Sea Hawk," not rated, will be shown at 8 p.m. in Memorial Union Aud. Cost: 50 cents.

## 13 Monday

**HIGH SCHOOL AWARDS DAY WORKSHOP:** Event will be held from 8 a.m.-3:30 p.m. in Memorial Union.

**WOMEN'S CENTER:** Dawn Hodi, center program coordinator and assertiveness trainer, and India McCause, director of education for Planned Parenthood of Central Missouri, will present "A Little to the Left, Dear. It's Your Perfect Right" at noon in the Women's Center, 1 Gentry Hall.

**CPPC:** "See Yourself As Others See You," practice job interviews, will be held at 1:40, 2:40 and 3:40 p.m. at the Career Planning and Placement Center, 110 Noyes Hall.

**BIOCHEMISTRY SEMINAR SERIES:** Michael J. Rovetto, associate professor of physiology, will present "Myocardial Nucleoside Transport and Metabolism" at 3:40 p.m. in 322 Chemistry Bldg. Refreshments will be served at 3:30 p.m.

**WOMEN'S CENTER:** Karen Fitzgerald, groups and counseling intern at the center and doctoral candidate in counseling psychology, will present "Ought To, Have To And Should" at 7 p.m. in the Women's Center, 1 Gentry Hall. Call 882-6549 to register.

**MSA FILM:** "Starstruck," rated PG, will be shown at 8 p.m. in Memorial Union Aud. Cost: \$1.

## 14 Tuesday

**SCHOOL OF NURSING CONTINUING EDUCATION PROGRAM:** Lawrence Ganong, associate professor; Mary Manderion, assistant professor; and Norma Jean Leigh, mental health clinical nurse specialist, will present "Staff Nurses: More on How to Thrive, Not Merely Survive" from 8 a.m.-4 p.m. at the Holiday Inn West, 1900 I-70 Drive S.W. Cost: \$60. Call 882-0216.

**CPPC:** "Your Job Interviews: Are You Ready?" will be presented from 3:45-5 p.m. at the Career Planning and Placement Center, 220 Noyes Hall.

**CPPC ADULT EVENING SEMINAR:** "Women in the Workplace: Strategies for Survival and Success" will be held from 7-9 p.m. at the Career Planning and Placement Center, 220 Noyes Hall.

**STUDENT ENSEMBLE SERIES:** Singations with Ira Powell, director, will perform at 8 p.m. in the Fine Arts Recital Hall.

## 15 Wednesday

**WOMEN'S CENTER:** Judith Burke, associate professor of social work, will present "Non-Sexist Therapy" at noon in the Women's Center, 1 Gentry Hall.

**MIDDAY GALLERY TALK:** Elizabeth Windisch, staff member at the Museum of Art and Archaeology, will present "Jewish Burial Customs in First Century Roman Palestine" at 12:25 p.m. in Pickard Hall.

**OPEN OFFICE HOURS:** Provost Lois DeFleur will hold open office hours from 3-5 p.m. in 114 Jesse Hall for one-on-one discussions with faculty, staff and students.

**CPPC:** "Your Resume: Write It Right" will be presented from 3:45-5 p.m. at the Career Planning and Placement Center, 220 Noyes Hall.

**STAFF FOR LIFE WELLNESS PROGRAM:** Totsaver, cardiopulmonary resuscitation for infants, will be presented from 6-9 p.m. in M211-212 School of Medicine. Cost: \$5. To enroll call 882-3880.

**BLACK CULTURE CENTER:** "Trivia Masters Tournament on Black History Trivia" will be held at 7 p.m. at the Black Culture Center, 823 Virginia Ave.

**STUDENT ENSEMBLE SERIES:** Symphony Band with Dale Kennedy, conductor, will perform at 8 p.m. in the Fine Arts Recital Hall.

## WEDNESDAY, FEBRUARY 25 -- 7:30 P.M. HEARNES BUILDING -- COLUMBIA, MO

**Tickets: \$9.50 and \$8.00** (\$2.00 discount for UMC students, children 12 and under and senior citizens. Discount not available day of event.)

**Mail Orders To:** Harlem Globetrotters, Box F, Columbia, MO 65205.

Make Check Payable To: University of Missouri  
(Enclose \$1.00 extra for postage & handling.)

For MC or Visa Orders and Information:

(314) 882-2056

8:00 - 5:00 Mon - Fri

Tickets: Hearnes Building  
and Sears in Jefferson City

Box Office Hours:

8:00 - 5:00 Mon - Fri

10:00 - 2:00 Sat

1927 ————— 1987

# HARLEM GLOBETROTTERS



DIAMOND JUBILEE

### ==> Let's Compute!\_

Are you a faculty or staff member just waiting for an excuse to use the computing facilities on campus?

You don't need an excuse. Obtaining a computer account is as simple as stopping by the Help Desk in 107 Lefevre Hall.

Once you have your mainframe account, use the faculty and staff computing lab in 107. The lab is open from  
7:30 am - midnight  
Monday - Friday;  
8:00 am - 5:00 pm  
Saturday; 2:00 pm - 10:00 pm Sunday.



If you're more interested in using a micro-computer, the lab also contains IBM PCs and Apple Macintoshes along with software for check out and use while you're there.

For more information on using the computing facilities on campus, contact the Help Desk in 107 Lefevre Hall, 882-5000.

a member of the can do crew



UNIVERSITY OF  
MISSOURI-COLUMBIA  
HOSPITAL & CLINICS 

proudly introduces its new logo.

We are pleased that our new logo's first audience is University faculty and staff. As members of the campus community, you are very much a part of the progress it symbolizes.

*The Staff for life*

MSA FILM: "Chariots of Fire," rated PG, will be shown at 8 p.m. in Ellis Aud. Cost: \$1.

APRIL

## 16 Thursday

**MISSOURI ASSOCIATION OF FFA 59th ANNUAL CONVENTION:** Event will be held from 8 a.m.-10 p.m. through April 17 at the Hearnes Bldg. Call 882-8253.

**WOMEN'S CENTER:** Michael Johnson, doctoral candidate in counseling psychology, will present "Communication with Children Through Laughter" at noon in the Women's Center, 1 Gentry Hall.

**FACULTY COUNCIL:** Group will meet at 3:40 p.m. in S110 Memorial Union.

## 17 Friday

**CPPC:** "Orientation to Career Planning and Placement Center Services" will be held from 4-5 p.m. in 110 Noyes Hall.

**MSA FILM:** "Jagged Edge," rated R, will be shown at 7 and 9:30 p.m. in Ellis Aud. Cost: \$2.

**BASEBALL:** Team will play Kansas State at 7 p.m. at Simmons Field. Cost: \$2 faculty/staff, \$1 students.

**FACULTY RECITAL SERIES:** Steve Geibel, flutist, and Janice Wenger, pianist, will perform at 8 p.m. in the Fine Arts Recital Hall.

**SEE THE STARS:** Weather permitting, the Laws Observatory on the roof of the Physics Bldg. will be open from 8-10 p.m.

## 18 Saturday

**WOMEN'S CENTER:** Meg Haycraft, psychotherapist at the Center for Growth and Change in St. Louis, will present "The Dependency Trap" from 1-4 p.m. in the Women's Center, 1 Gentry Hall. To register call 882-6549.

**BASEBALL:** Team will play Kansas State at

5 p.m. at Simmons Field. Cost: \$2 faculty/staff, \$1 students.

**MSA FILM:** "Jagged Edge," rated R, will be shown at 7 and 9:30 p.m. in Ellis Aud. Cost: \$2.

**INTERNATIONAL NIGHT:** Event will be held at 7 p.m. in Jesse Aud. Call 882-8386.

## 19 Sunday

**BASEBALL:** Team will play Kansas State at 12:30 p.m. at Simmons Field. Cost: \$2 faculty/staff, \$1 students.

**MSA FILM:** "Gulliver's Travels," not rated, will be shown at 8 p.m. in Memorial Union Aud. Cost: 50 cents.

## 20 Monday

**B&PA WEEK:** Event will take place through April 25. Call 882-4562.

**WOMEN'S CENTER:** Kim Dude, assistant director of Residential Life, will present "Whole Brain Thinking" at noon in the Women's Center, 1 Gentry Hall.

**JAZZ ON THE MALL:** Singasations with Ira Powell, director, will perform at noon on Lowry Mall.

**BIOCHEMISTRY SEMINAR SERIES:** Douglas D. Randall, professor of biochemistry, will present "Plant Pyruvate Dehydrogenase Complexes" at 3:40 p.m. in 322 Chemistry Bldg. Refreshments will be served at 3:30 p.m.

**CPPC:** "Orientation to Career Planning and Placement Center Services" will be held from 4-5 p.m. in 110 Noyes Hall.

**FACULTY RECITAL SERIES:** Esterhazy Quartet will perform at 8 p.m. in the Fine Arts Recital Hall.

**MSA FILM:** "Eyewitness," rated R, will be shown at 8 p.m. in Memorial Union Aud. Cost: \$1.

## 21 Tuesday

**JAZZ ON THE MALL:** Jazz Combos with

Jeffrey Lemke, director, will perform at noon on Lowry Mall.  
**CPPC:** "See Yourself As Others See You," practice job interviews, will be held at 1:40, 2:40 and 3:40 p.m. at the Career Planning and Placement Center, 110 Noyes Hall.  
**LECTURE:** "Letters to Strindberg" will be presented by Carla Waal, professor of theater, and Michael Schelle of the Department of Music at Butler University at 4 p.m. in the Fine Arts Recital Hall.  
**STUDENT ENSEMBLE SERIES:** University Singers with Duncan Couch, conductor, will perform at 8 p.m. in the Fine Arts Recital Hall.

## 22 Wednesday

**COLLEGE PHOTOGRAPHER OF THE YEAR:** Event will be held from 8:30 a.m.-5 p.m. today and April 23 in Gannett Forum.

**CHANCELLOR'S LUNCHEON FOR RETIREES:** Social hour will be held at 10 a.m., followed by luncheon at 11:30 a.m. in Hearnes Bldg. Faculty and staff retirees are invited.

**FILM:** "Las Madres: The Mothers of Plaza de Mayo" will be presented at noon and 7 p.m. in the Women's Center, 1 Gentry Hall.

**JAZZ ON THE MALL:** Jazz Combos with Jeffrey Lemke, director, will perform at noon on Lowry Mall.

**MIDDAY GALLERY TALK:** Osmund Overby, professor of art history and archaeology, will present "Thirty-minute Connoisseurship" at 12:25 p.m. in Pickard Hall.

**OPEN OFFICE HOURS:** Provost Lois DeFleur will hold open office hours from 3-5 p.m. in 114 Jesse Hall for one-on-one discussions with faculty, staff and students.

**BASEBALL:** Team will play Southwest Missouri State at 5 p.m. at Simmons Field. Cost: \$2 faculty/staff, \$1 students.

**BLACK CULTURE CENTER:** "Racism in the '80s," a panel discussion, will be held at 6 p.m. at the Black Culture Center, 823 Virginia Ave.

**STUDENT ENSEMBLE SERIES:** Jazz Combos with Jeffrey Lemke, director, will perform at 8 p.m. in the Fine Arts Recital Hall.

**MSA FILM:** "Body Heat," rated R, will be shown at 8 p.m. in Ellis Aud. Cost: \$1.

## 23 Thursday

**WOMEN'S CENTER:** Barbara Bank, associate professor of sociology, will present "My Self and My Friends" at noon in the Women's Center, 1 Gentry Hall.

**JAZZ ON THE MALL:** Jazz Lab Band with Jeffrey Lemke, director, will perform at noon on Lowry Mall.

**STAFF COUNCIL:** Group will meet at 1:15 p.m. in S206 Memorial Union.

**UNIVERSITY THEATER:** "True West" will be presented at 8 p.m. in the Rhynsburger Theater. Cost: \$4.50 faculty/staff, \$2.50 students.

**STUDENT ENSEMBLE SERIES:** Concert Band with J. Russell Laib, conductor, will perform at 8 p.m. in Jesse Aud.

## 24 Friday

**JUGGLER'S CONVENTION:** Jugglefest '87, sponsored by the University YMCA/YWCA, will be held through Sunday. Call 882-1550.

**PICTURES OF THE YEAR AWARDS:** Event will be held from 9 a.m.-5 p.m. today and April 25 in the Gannett Forum and Aud.

**REGIONAL NEWSPAPER WORKSHOP:** Event will be held today and April 25 in 276-278 Gannett Hall.

**JAZZ ON THE MALL:** Studio Jazz Ensemble with Jeffrey Lemke, director, will perform at noon on Lowry Mall.

**B&PA HONORS BANQUET:** Event will begin at 6 p.m. at the Columbia Hilton Inn, 2200 I-70 Drive S.W. For cost and ticket information call 882-4562.

**BLACK CULTURE CENTER:** "Soul Video" will be presented at 6 p.m. at the Black Culture Center, 823 Virginia Ave.

**BASEBALL:** Team will play Oklahoma at 7 p.m. at Simmons Field. Cost: \$2 faculty/staff, \$1 students.

**MSA FILM:** "Children of a Lesser God," rated R, will be shown at 7 and 9:30 p.m. in Ellis Aud. Cost: \$2.

**UNIVERSITY THEATER:** "True West" will be presented at 8 p.m. in the Rhynsburger Theater. Cost: \$4.50 faculty/staff, \$2.50 students.

**STUDENT ENSEMBLE SERIES:** Studio Jazz Ensemble and Jazz Lab Band with Jeffrey Lemke, director, will perform at 8 p.m. in Jesse Aud.

**SEE THE STARS:** Weather permitting, the Laws Observatory on the roof of the Physics Bldg. will be open from 8-10 p.m.

**MSA FILM:** "Altered States," rated R, will be shown at midnight in Ellis Aud. Cost: \$1.50.

## 25 Saturday

**GRADUATE PROFESSIONAL COUNCIL:** Group will present the fourth annual Research and Creative Activities Forum from 8 a.m.-8 p.m. in Memorial Union and the Fine Arts Complex. Call 882-3492.

**FOOTBALL:** Black and Gold intrasquad scrimmage game will be played at 1:30 p.m. at Faurot Field. Cost: \$2 faculty/staff.

**BASEBALL:** Team will play Oklahoma at 5 p.m. at Simmons Field. Cost: \$2 faculty/staff, \$1 students.

**MSA FILM:** "Children of a Lesser God," rated R, will be shown at 7 and 9:30 p.m. in Jesse Aud. Cost: \$2.

**UNIVERSITY THEATER:** "True West" will be presented at 8 p.m. in the Rhynsburger Theater. Cost: \$4.50 faculty/staff, \$2.50 students.

**FACULTY RECITAL SERIES:** Paul Garrison, clarinetist, and Marie Garrison, pianist, will perform at 8 p.m. in the Fine Arts Recital Hall.

**MSA FILM:** "Altered States," rated R, will be shown at midnight in Jesse Aud. Cost: \$1.50.

## 26 Sunday

**BASEBALL:** Team will play Oklahoma at 12:30 p.m. at Simmons Field. Cost: \$2 faculty/staff, \$1 students.

**STAFF FOR LIFE WELLNESS PROGRAM:** Six-week aerobic exercise for beginners will begin tonight from 5:30-6:30 p.m. in the Rock Quarry Center dining room. Cost: \$25. To enroll call 882-3880.

**MSA FILM:** "Dead of Night," not rated, will be shown at 8 p.m. in Memorial Union Aud. Cost: 50 cents.

## 27 Monday

**BIOCHEMISTRY SEMINAR SERIES:** Derek Cash, assistant professor of biochemistry, will present "Ion Channel Opening and Desensitization of GABA Receptor from Rat Brain" at 3:40 p.m. in 322 Chemistry Bldg. Refreshments will be served at 3:30 p.m.

**MSA FILM:** "Viridiana," not rated, will be shown at 8 p.m. in Memorial Union Aud. Cost: \$1.

## 28 Tuesday

**CPPC:** "Orientation to Career Planning and Placement Center Services" will be held from 4-5 p.m. in 110 Noyes Hall.

**BASEBALL:** Team will play University of Missouri-Rolla at 7 p.m. at Simmons Field. Cost: \$2 faculty/staff, \$1 students.

## 29 Wednesday

**MSA SPECIAL EVENT:** Dave Wopat, musician, will perform at noon on Lowry Mall.

**MIDDAY GALLERY EVENT:** Osmund Overby, professor of art history and archaeology, will present "From Jefferson to Trova: A Walk Around the Quadrangle" at 12:25 p.m. in Pickard Hall.

**OPEN OFFICE HOURS:** Provost Lois DeFleur will hold open office hours from 3-5 p.m. in 114 Jesse Hall for one-on-one discussions with faculty, staff and students.

**BASEBALL:** Team will play University of Missouri-St. Louis at 5 p.m. at Simmons Field. Cost: \$2 faculty/staff, \$1 students.

**WOMEN'S CENTER:** "Legal Issues for Lesbians and Gays" will be presented at 7 p.m. in the Women's Center, 1 Gentry Hall.

**MSA FILM:** "Guess Who's Coming To Dinner," not rated, will be shown at 8 p.m. in Ellis Aud. Cost: \$1.

**UNIVERSITY THEATER:** "True West" will be presented at 8 p.m. in the Rhynsburger Theater. Cost: \$4.50 faculty/staff, \$2.50



students.  
**STUDENT ENSEMBLE SERIES:** Brass Choir with Betty Scott, director, will perform at 8 p.m. in the Fine Arts Recital Hall.

APRIL  
**30 Thursday**

**WOMEN'S CENTER:** Liz Bulman, third-ranked U.S. triathlete and second-place finisher in the 1986 Ironman, will present "Triathletic Woman" at noon in the Women's Center, 1 Gentry Hall.

**MINORITY STUDENT PROGRAMS AWARDS:** Event will be held at 7 p.m. in N214-215 Memorial Union.

**UNIVERSITY THEATER:** "True West" will be presented at 8 p.m. in the Rhynsburger Theater. Cost: \$4.50 faculty/staff, \$2.50 students.

**STUDENT ENSEMBLE SERIES:** Concert Chorale with Jess Wade, conductor, will perform at 8 p.m. in the Fine Arts Recital Hall.

**MAY**

**1 Friday**

**SCHOOL OF NURSING CONTINUING EDUCATION PROGRAM:** Ann Rosenow, professor and associate dean for research and director of graduate studies in the School of Nursing, will present "The Aging Woman" from 8 a.m.-4 p.m. at the School of Nursing. For cost call 882-0216.

**NEWSPAPER DESIGN WORKSHOP:** Event will be held from 8:30 a.m.-5 p.m. through May 3 in the Gannett Aud. and Forum.

**STATE HIGH SCHOOL MUSIC FESTIVAL:** Event will be held today and May 2 around campus.

**MSA FILM:** "The Fly," rated R, will be shown at 7 and 9:30 p.m. in Ellis Aud. Cost: \$2.

**WOMEN'S CENTER:** "May Day Celebration" will be held at 7:30 p.m. in the Women's Center, 1 Gentry Hall.

**UNIVERSITY THEATER:** "True West" will be presented at 8 p.m. in the Rhynsburger Theater. Cost: \$4.50 faculty/staff, \$2.50 students.

**SEE THE STARS:** Weather permitting, the Laws Observatory on the roof of the Physics Bldg. will be open from 8-10 p.m.

**2 Saturday**

**MSA FILM:** "The Fly," rated R, will be shown at 7 and 9:30 p.m. in Ellis Aud. Cost: \$2.

**UNIVERSITY THEATER:** "True West" will be presented at 8 p.m. in the Rhynsburger Theater. Cost: \$4.50 faculty/staff, \$2.50 students.

**3 Sunday**

**COSMETOLOGY TEACHERS WORKSHOP:** Event will be held through May 4 at the Hearnes Bldg. For information call 882-8253.

**MSA FILM:** "And Then There Were None," not rated, will be shown at 8 p.m. in Memorial Union Aud. Cost: 50 cents.

**4 Monday**

**FACULTY RECOGNITION WEEK:** Events will be held throughout campus.

**WOMEN STUDIES COLLOQUIUM:** Presentation by the winner of the women studies undergraduate essay award will be held at 7:30 p.m. in S7 Memorial Union.

**STUDENT ENSEMBLE SERIES:** Women's Chorus with Gregory Fuller, conductor, will perform at 8 p.m. in the Fine Arts Recital Hall.

**MSA FILM:** "Boudu Save From Drowning," not rated, will be shown at 8 p.m. in Memorial Union Aud. Cost: \$1.

**5 Tuesday**

**STUDENT ENSEMBLE SERIES:** Chamber Singers will perform at 8 p.m. in the Fine Arts Recital Hall.

**6 Wednesday**

**MIDDAY GALLERY TALK:** Forrest McGill, director of the Museum of Art and Archaeology, will present "The Reinstallation of the Chinese, Japanese and Southeast Asian Gallery" at 12:25 p.m. in Pickard Hall.

**PSYCHIATRY COLLOQUIUM:** Richard F. Mollica, assistant professor in the Department of Psychiatry at Harvard Medical School, will present "Upside Down Psychiatry: A Genealogy of Mental Health Sources and Its Implications for Research, Training and Treatment" at 1 p.m. in the Truman Veterans Hospital Aud.

**OPEN OFFICE HOURS:** Provost Lois DeFleur will hold open office hours from 3-5 p.m. in 114 Jesse Hall for one-on-one discussions with faculty, staff and students.

**STAFF FOR LIFE WELLNESS PROGRAM:** Heartsaver Course, cardiopulmonary resuscitation for adults, will be presented from 6-9 p.m. in M211-212 School of Medicine. Cost: \$5. To enroll call 882-3880.

**STUDENT ENSEMBLE SERIES:** University Philharmonic with Edward Dolbashian, conductor, will perform at 8 p.m. in Jesse Aud.

**MSA FILM:** "Willard," rated R, will be shown at 8 p.m. in Ellis Aud. Cost: \$1.

**7 Thursday**

**FACULTY COUNCIL:** Group will meet at 3:40 p.m. in S110 Memorial Union.

**BASEBALL:** Team will play Southern Illinois University-Edwardsville at 6 p.m. at Simmons Field. Cost: \$2 faculty/staff, \$1 students.

**RADIO-TV-FILM FESTIVAL:** Department of Communication will sponsor the 7:30 p.m. event in Ellis Aud.

**8 Friday**

**STOP DAY**  
**MSA FILM:** "Jumpin' Jack Flash," rating not available, will be shown at 7 and 9:30 p.m. in Jesse Aud. Cost: \$2.

**SEE THE STARS:** Weather permitting, the Laws Observatory on the roof of the Physics Bldg. will be open from 8-10 p.m.

**9 Saturday**

**FINAL EXAMS BEGIN** at 7:40 a.m.  
**MSA FILM:** "Jumpin' Jack Flash," rating not available, will be shown at 7 and 9:30 p.m. in Jesse Aud. Cost: \$2.

**MSA FILM:** "The Creature From the Black

Lagoon In 3-D," not rated, will be shown at midnight in Jesse Aud. Cost: \$1.50.

**10 Sunday**

**MOTHER'S DAY**  
**BASEBALL:** Team will play Arkansas at 7 p.m. at Simmons Field. Cost: \$2 faculty/staff, \$1 students.

**12 Tuesday**

**BLACK CULTURE CENTER:** During Finals Study Week at the Black Culture Center, 823 Virginia Ave., the center will stay open 24 hours a day through Saturday.

**13 Wednesday**

**SCHOOL OF NURSING CONTINUING EDUCATION PROGRAM:** Jean Bagnell, administrative nurse I and night house manager of Nursing Services at the University Hospital and Clinics, and Robert D. Spengler, former administrative nurse I and house manager, will present "Independent Role of the Night Nurse" from 8:30 a.m.-noon at the Columbia Hilton, 2200 I-70 Drive S.W. Cost: \$20. Call 882-0216.

**OPEN OFFICE HOURS:** Provost Lois

**TELL US WHAT YOU THINK.**

And get  
a free soda  
on us.



We're Campus Dining Services, a department of the University, and we're in charge of meal service in Brady Commons and the Union.

Help us serve you better by letting us know how you feel about the food service on campus.

Just fill out the below survey and redeem it at Brady's Grill, Brady's Deli, the Bengal or the Union Cafe for a free 12 oz. soda.

At Campus Dining Services we care about what you think, and hope to see you soon.

- 1) What do you like best about the current food service?
- 2) What do you like least about the current food service?
- 3) What changes would you make if you were in charge?

Redeemable for a 12 oz. soda at  
Brady's Grill or Deli, the Bengal or the Union Cafe  
Expires Fri., Feb. 6, 1987

**the Bengal**  
Main level  
Memorial Union  
TR 10-9 Fri 10-4:30  
Sat 10-4 Sun 2-9

**BRADY'S DELI**  
Main level Brady Commons  
M-Sat 10-10 Sun 2 pm-10

**BRADY'S GRILL**  
Main level Brady Commons  
M-F 4-7

**Union Cafe**  
Lower level  
Memorial Union  
M-F 7-3

**CDS**



Campus Dining Services



DeFleur will hold open office hours from 3-5 p.m. in 114 Jesse Hall for one-on-one discussions with faculty, staff and students

MAY

## 14 Thursday

STAFF COUNCIL: Group will meet at 1:15 p.m. in S206 Memorial Union.

## 15 Friday

SUMMER RECESS BEGINS at 5 p.m.  
SEE THE STARS: Weather permitting, the Laws Observatory on the roof of the Physics Bldg. will be open from 8-10 p.m.

## 16 Saturday

COMMENCEMENT

## 18 Monday

WORKSHOP: "Newspaper Fund Editing Intern Workshop" will be held through May 29 in the Journalism School.

## 25 Monday

CONFERENCE: The 21st annual "Conference

on Trace Substances in Environmental Health" will be held through May 28 at the Clarion Hotel in St. Louis. Cost: \$140. Call 882-6059.

## 26 Tuesday

WORKSHOP: Penney-Missouri TV Workshop will be presented from 8:30 a.m.-5 p.m. in the Gannett Forum. Call 882-7771.

## 31 Sunday

SCHOOL OF NURSING CONTINUING EDUCATION PROGRAM: Fourth annual "Institute on Self-Care Deficit Theory of

Nursing" will be presented from 8 a.m.-4:30 p.m. through June 5 at the Holiday Inn West, 1900 I-70 Drive S.W. Cost to be announced. Call 882-0216.  
WORKSHOP: "Graduate Institute of Cooperative Leadership" will be held through June 12 on campus. Cost: \$1,250.

## JUNE

## 3 Wednesday

WORKSHOP: "John Percival Financial Analysis Workshop" will be presented from 8:30 a.m.-5 p.m. in the Gannett Forum.

# EXHIBITS

HOSPITAL AND CLINICS: "Art for Life," featuring works by hospital staff members, will be on display in the main lobby concourse area through Jan. 31.

MUSEUM OF ART AND ARCHAEOLOGY: "American Art Since 1945: Selections From The Permanent Collection" will be on display through early May. Hours are 8 a.m.-5 p.m. Tuesday through Friday and noon-5 p.m. weekends.

HOSPITAL AND CLINICS: "Art for Life," featuring "Selections from 'Watercolor U.S.A.'" and pottery painted by local artist Keith Crown will be on display in the main

lobby concourse Feb. 1-April 31.

FINE ARTS GALLERY: "Missouri Art Educators Exhibition" will be on display Feb. 2-20. Hours are 9 a.m.-3 p.m. weekdays and 2-4 p.m. Sundays.

BRADY COMMONS GALLERY: "Denyse Sturgis Black and White Photography" will be on display Feb. 2-12. Hours are 10-5 p.m. weekdays and 3-5 p.m. Sundays.

BRADY COMMONS GALLERY: The Black Culture Center, in conjunction with Black History Month, will sponsor an exhibition of works by Ladenia Cowper Feb. 16-26. Hours are 10 a.m.-5 p.m. weekdays and 3-5 p.m. Sundays.

MISSOURI CULTURAL HERITAGE CENTER: "Historic American Buildings in Missouri: New Photos by Jack E. Boucher" will be on display through Feb. 16. Hours

are 8 a.m.-5 p.m. weekdays. Gallery is on the second floor of the Conley House, Sanford and Conley streets.

STATE HISTORICAL SOCIETY GALLERY: "Framed Historic Maps" will be on display through Feb. 28. Hours are 8:30 a.m.-4:30 p.m. weekdays.

STATE HISTORICAL SOCIETY: "Daniel R. Fitzpatrick Original Drawings" will be on display in the society's corridor through Feb. 28. Hours are 8 a.m.-4:30 p.m. weekdays and 9 a.m.-4:30 p.m. Saturdays.

MUSEUM OF ART AND ARCHAEOLOGY: "Corinthian Vase Painters in Missouri" will be on display through March 1. Hours are 8 a.m.-5 p.m. Tuesday through Friday and noon-5 p.m. weekends.

FINE ARTS GALLERY: "Promising Young Artists of Missouri Exhibition" will be on

display Feb. 22-March 6. Hours are 9 a.m.-3 p.m. weekdays and 2-4 p.m. Sundays.

MISSOURI CULTURAL HERITAGE CENTER: "Conserving Family Heritage: Textiles from the Cornett Farm Project" will be on display Feb. 24-April 4. Hours are 8 a.m.-5 p.m. weekdays.

BRADY COMMONS GALLERY: "Doug Ross Wildlife Paintings" will be on display March 2-12. Hours are 10 a.m.-5 p.m. weekdays and 3-5 p.m. Sundays.

FINE ARTS GALLERY: "Picasso Prints Done in Collaboration with Marcel Salinas" will be on display March 8-27. Hours are 9 a.m.-3 p.m. weekdays and 2-4 p.m. Sundays.

BRADY COMMONS GALLERY: "International Student Show" will be on display March 19-27. Hours are 10 a.m.-5 p.m. weekdays and 3-5 p.m. Sundays.  
BRADY COMMONS GALLERY: "Staff Recognition Week Staff Art Exhibition" will be on display March 30-April 9. Hours are 10 a.m.-5 p.m. weekdays and 3-5 p.m. Sundays.

FINE ARTS GALLERY: "Three Generations of Weston Photography: Edward, Cole and Kim" will be on display March 29-April 17. Hours are 9 a.m.-3 p.m. weekdays and 2-4 p.m. Sundays.

MISSOURI CULTURAL HERITAGE CENTER: "Our Girls Used to Marry Boys Over There," an exhibition based on life in Kansas City Slavic communities, will be on display April 7-May 16. Hours are 8 a.m.-5 p.m. weekdays.

BRADY COMMONS GALLERY: "John Kuhlman Xerox Prints" will be on display April 13-23. Hours are 10 a.m.-5 p.m. weekdays and 3-5 p.m. Sundays.

FINE ARTS GALLERY: "Annual Graduate Art Student Exhibition" will be on display April 20-30. Hours are 9 a.m.-3 p.m. weekdays and 2-4 p.m. Sundays.

BRADY COMMONS GALLERY: "Al Nixon Black and White Photography" will be on display April 27-May 7. Hours are 10 a.m.-5 p.m. weekdays and 3-5 p.m. Sundays.

FINE ARTS GALLERY: The annual art auction will be held May 1-3. Auctioning will begin at 1:30 p.m. May 3.

FINE ARTS GALLERY: "Annual Art Students Exhibition" will be on display May 3-8. Hours are 9 a.m.-3 p.m. weekdays and 2-4 p.m. Sundays.

FINE ARTS GALLERY: "Tess Durham and Karen Kelly: Master of Fine Arts Thesis Exhibition" will be on display May 10-22. Hours are 9 a.m.-3 p.m. weekdays and 2-4 p.m. Sundays.

BRADY COMMONS GALLERY: "Mark Jones Sculpture" will be on display May 11-21. Hours are 10 a.m.-5 p.m. weekdays and 3-5 p.m. Sundays.

FINE ARTS GALLERY: "Mark Jones: Doctoral Candidate in Art Education Exhibition" will be on display May 24-June 5. Hours are 9 a.m.-3 p.m. weekdays and 2-4 p.m. Sundays.

UNIVERSITY OF MISSOURI-COLUMBIA

# CONCERT SERIES 1986-1987

DESIGN YOUR OWN TICKET PACKAGE and bring a friend!

		Public	Students
Saint Louis Symphony.....	Thurs. Jan. 29	\$12	\$11
<i>Elmar Oliveira, violinist</i>			
Juilliard Quartet.....	Mon. Feb. 2	\$14	\$13
Guthrie Theater.....	Sat. Feb. 14	\$12	\$11
<i>CANDIDA</i>			
Franz Liszt Chamber Orchestra.....	Sun. Feb. 22	\$12	\$11
<i>Alain Marion, flutist</i>			
Minoru Nojima, pianist.....	Sat. Feb. 28	\$11	\$10
<i>Missouri Sinfonia • Missouri Arts Quintet</i>			
Saint Louis Symphony.....	Sun. March 1	\$10	\$9
<i>Choral Union • Mozart REQUIEM</i>			
Eliot Fisk, guitarist.....	Fri. March 6	\$13	\$12
<i>Paula Robison, flutist</i>			
New York City Opera Nat'l Company.....	Mon. March 30	\$16	\$15
<i>MADAMA BUTTERFLY</i>			
Beaux Arts Trio.....	Fri. April 3	\$12	\$11
<i>Walter Trampler, violist</i>			

Name \_\_\_\_\_

Address \_\_\_\_\_

City \_\_\_\_\_ State \_\_\_\_\_ Zip \_\_\_\_\_

Student No. \_\_\_\_\_

For our Records:

Phone: Business \_\_\_\_\_

Home \_\_\_\_\_

Event	No. Tks.	@ \$	=	Seating Preference	
				Main F.	Bal.
_____	_____	_____	=	_____	_____
_____	_____	_____	=	_____	_____
_____	_____	_____	=	_____	_____
TOTAL \$				_____	_____

SEND TO University Concert Series • 135 Fine Arts — UMC • Columbia, Mo. 65211

Make checks payable to University Concert Series

If you want tickets mailed include a stamped, self-addressed envelope.

(Student-priced tickets must

be picked up at Jesse Box Office.)



# FORUM

## Retirees urged to stay in touch

By Robert S. Daniel

The chancellor's retiree advisory committee is pleased to inform retirees about some activities in this special issue of Mizzou Weekly, which is being sent to all faculty and staff who have retired from the Columbia campus.

Mark your calendars for the annual chancellor's luncheon for retired faculty and staff. It will be held April 22 at the Hearnes Building, with a social hour beginning at 10 a.m. and the luncheon at 11:30 a.m. Parking is available and the luncheon area will be accessible at ground level. The committee is planning an interesting and informative program. You will receive a reservation notice with more details in March. If you don't receive a notice and wish to attend, call committee Chair Robert Daniel at (314) 882-6268.

The committee recently handled two inquiries from retirees. It learned that retirees may continue to use their old University identification cards or obtain new ones from 1 to 4 p.m. on Fridays at the Heinkel Building, 201 S. Seventh St. Retirees who maintain a campus office with telephone

may continue to have a listing in the campus directory. They should request this action in their department.

Emeritus retirees may be interested in joining the Academy of Independent Scholars, which helps provide resources for senior scholars. Its quarterly newsletter provides a clearinghouse for information of value to emeriti scholars. The academy's address is P.O. Box 3247, Boulder, Colo. 80307.

Another resource for area retirees is the Boone County Council on Aging. Services include senior citizen discount cards, the Carrier Alert program and professional counseling. For more information call 443-1111 or stop by 123 S. Ninth St.

The committee urges all retirees to take advantage of the opportunity to receive Mizzou Weekly by mail. The committee has limited resources for communicating with its constituencies, and is concerned that retirees lose contact with the campus. The \$10 annual subscription cost covers first-class postage; those retirees who maintain a campus address will continue to receive Mizzou Weekly free of charge. Retirees may send news of their professional accomplishments to People, Mizzou Weekly, 1100 University Place, 1205 University Ave., Columbia, Mo. 65211.

The retirees committee is interested in hearing about your concerns. Members are Arthur Berndtson, Martha Fortney, E. Clarendon Hyde, Lillian Keene, Anderson Logan, Margaret Mangel, Ray McClure and myself.

**Daniel, professor emeritus of psychology, is chair of the retiree advisory committee.**

average number of credit hours has been dropping slightly for some time. In fall 1983, students took an average of 13.13 hours. That fell to 13.06 in fall 1984.

**Q. Why won't the Athletic Ticket Office sell D-section tickets for home basketball games prior to the night of the game? I went to purchase three D-section tickets the morning of a recent game and the person at the ticket window said that because there were C-section tickets left, D-section tickets would not go on sale until the C-section was sold out or until 4:30 or 5 p.m. that evening. What's the point of having different priced seats if the Athletic Department will not sell them to the people who want to buy them, when they want to buy them?**

**A. George Hough, manager of the Athletic Ticket Office, says his office doesn't see any reason to put D-level tickets on sale until C-level is sold out. "If we sold D-level tickets during the week, no one would buy C-level tickets. Everyone would buy the less-expensive ticket and then move down into the C-level seats during the game.**

**"We're not preventing anyone from buying D-level tickets, but they have to do so the night of the game," Hough says. The ticket office will sell D-level tickets prior to the night of a game if C-level is sold out.**

**Send your questions about campus matters to Mizzou Weekly, 1100 University Place. You must include your name and phone number so we can reach you, if necessary.**

# Q&A

**Q. Is there any University regulation that prohibits two students or two regular staff employees who are siblings from working in the same office or department when neither is in any kind of supervisory role?**

**A. Charles Hunter, manager of Employment Services in Personnel Services, says there is no University regulation that prohibits the hiring of siblings. "However, a specific department may choose to establish this guideline when hiring," he says.**

**Q. Did the average student course load diminish as a result of the fall 1986 introduction of the new fee policy that has students paying for each semester hour as opposed to a flat fee for a certain number of hours?**

**A. According to figures from Mizzou's Institutional Research and Planning office, on the average, student credit hours dropped only slightly from 12.95 hours a semester in fall 1985 to 12.68 hours in fall 1986. It's important to note that the**

## Scholars named

Three Mizzou professors and two doctoral candidates have received 1986-87 Fulbright scholarships for educational and cultural research abroad. Five professors from other countries also received grants to conduct research or lecture at the University.

Joel Brereton, associate professor of religious studies, will conduct research for six months at the University of Poona in India. Floyd Delon, professor of educational administration, will lecture in that field at the Pedagogical Institute and Turkish Office of Education in Nicosia, Cyprus. Donald Littrell, associate professor and chair of community development, will spend nine months at the Songkla University in Patani, Thailand, lecturing on extension and community development.

Doctoral students receiving Fulbrights are Linda Krueger, who will study folk music in Brazil, and Barbara A.S. Thiede, who will work in Germany.

## Sesquicentennial Plan Questionnaire

Campus planning is an ongoing process that benefits from broad participation. Campus planning committee members have a regular opportunity to meet with planners and administrators to review the plan. It would be a great help to them in their effort to represent the interests of the University community if you would complete this questionnaire after you have had the opportunity to look over the draft plan included in this issue of Mizzou Weekly.

1. You are:  faculty,  staff,  student,  other.
2. In general, do you:
  - favor the plan
  - oppose the plan
  - need more information

Please rate the following items as envisioned in the draft plan on a scale of one to five where five is best.

3. The overall consistency of the plan with prior goals and aesthetics. 1 2 3 4 5
4. The landscape design and provision for open space. 1 2 3 4 5
5. The provisions for recreational facilities. 1 2 3 4 5
6. Pedestrian needs and the design of walkways. 1 2 3 4 5
7. Vehicular access, remembering the goal of preserving the center as a pedestrian campus. 1 2 3 4 5
8. Parking. 1 2 3 4 5

Your specific suggestions for improvements in the above:

What do you like best about the draft plan?

What do you feel most needs further attention?

How could we improve general participation in the planning process?

Other comments:

# MIZZOU WEEKLY

Vol. 8 No. 17

A publication of the University of Missouri-Columbia faculty and staff, published every Friday during the academic year and twice a month during the summer by Publications and Alumni Communication, a department of Development, University and Alumni Relations Division, 1100 University Place, 882-7357. News deadline is noon Friday the week before publication. Annual subscriptions are available to retirees for \$10. Faculty Council and Staff Council communication committee members: Donald Anderson, Bob Derryberry, Gary Fields, Linda Holsinger, Gordon Kimber, C. Kirk Leeper, Mary Miller, Barbara Olson Smith and Donna Turner.

Editor: Karen Worley  
Assistant editor: Carol Hunter  
Staff writer: Mary Vermillion  
Advertising coordinator: Sherrill Harsh  
Graphic editor: Larry Boehm

Please detach and return via campus mail to:  
**Professor Osmund Overby, chair  
Campus planning committee  
109 Pickard Hall**



# Supporting Mizzou...

It's obvious that our faculty and staff appreciate the important role that the Alumni Association plays in our University. Those who support Mizzou with their time, service and money are pleased with the strides we gain toward educational excellence.



"I'm involved with the Association's Faculty-Alumni Awards program," says Raymond A. Schroeder, a professor emeritus of horticulture.

Student recruitment, Faculty-Alumni Awards, Merit and Achievement Scholars, and divisional alumni organizations are some of the benefits an Association membership provides.

"Being a Missouri native and a graduate of the University, it means a lot to support Mizzou through the Alumni Association," says Wayne McLaughlin, assistant director of purchasing.



Now more than ever the Association needs your support. To help us maintain and expand our programs, we are extending a special half-price annual membership offer of \$10 to all faculty, staff and retirees, alumni or non-alumni. Please join us—sign up today!

clip and mail

Name \_\_\_\_\_ phone (\_\_\_\_) \_\_\_\_\_  
 Mailing address \_\_\_\_\_  
 City \_\_\_\_\_ State \_\_\_\_\_ Zip \_\_\_\_\_  
 I was a Mizzou student  yes  no When? \_\_\_\_\_  
 Student Number \_\_\_\_\_  
 I am/was employed in office \_\_\_\_\_  
 Is spouse an alumnus?  yes  no Name \_\_\_\_\_

clip and mail

Return form along with your check payable to Mizzou Alumni Association  
 132 Alumni Center  
 Columbia, Mo. 65211



## Director named

Gary Filbert, assistant athletic director, recently was named executive director of the 1987 Show-Me State Games, to be held in Columbia Aug. 6-8.

Filbert, a former Mizzou basketball player and 35-year veteran of Missouri sports, was named to the position by the

Governor's Council on Physical Fitness and Health on the recommendation of the University. Filbert is the immediate past president of the Missouri Association of Basketball Coaches. He was the Athletic Department's representative to the 1986 Show-Me Games.

The Show-Me Games is a statewide, Olympic-style sports festival for Missouri amateur athletes of all ages. June 1 is the kickoff date for district competition in five of the 14 sports played at the competition. Those five are basketball, track and field, tennis, soccer and bowling. The other sports included in the games are archery, volleyball, gymnastics, cycling, judo, wrestling, table tennis, swimming and golf.

The University also will host the 1987 Missouri State High School Activities Association Football Show-Me Bowl games at Faurot Field. In the past, the high-school football championship games have been rotated between Kansas City and St. Louis. The two-day event will be held the Friday and Saturday following Thanksgiving.



**FOR SALE:** Xerox 860 word processor with full page display keyboard with CAT, printer and auto sheet feed. \$2,000. Call Debbie at 882-2146.

**RESEARCH ASSISTANCE ACT:** Missouri Research Assistance Act proposals are due noon March 2 in 305 Jesse Hall. Any research project that will promote the economic development of Missouri is eligible. With

questions call John McCormick, associate dean, at 882-9500 or the Grants Office at 882-7650.

**OVERSEAS STUDY:** Applications are being accepted now for the 1987-88 Missouri London Program. In addition, applications for the year abroad program at Sophia University in Tokyo are being accepted until March 30 in 101 Gentry Hall. With questions about either program call the International Center Office at 882-6007.

**GLOBAL JOINS TRAVEL GROUP:** Effective immediately, Global Travel Service is part of the University's travel management program. The agency assumed the services previously provided to the University by Global/IVI Travel Agency. University travelers may now use Global Travel Service for travel arrangements.



## Telecommunications explains TSPS

Within the next month, the Boone County area served by GTE will be converting to TSPS, which will permit automated processing of calling-card calls without the assistance of local operators. Beverly Blackwell, manager of Telecommunications, has developed some questions and answers regarding TSPS. With other questions, call the Telecommunications office at 882-2177 or the Help Desk at 882-1600.

- Q. What does TSPS stand for?**  
 A. Traffic Service Position System or 9 plus 0 plus calling.
- Q. When I dial 9 plus 0 plus the seven- or 10-digit telephone number, what will happen?**  
 A. Upon completion of dialing, you'll hear a tone. If you want to make a credit card call, enter the 14 digits of your credit card number from a touch call phone. If you don't enter your credit card number within a few seconds after the tone, an AT&T operator will come on the line for

assistance. The operator will ask for the name of the person being called for person-to-person calls, your name for collect calls or credit card information for credit card calls.

**Q. Is it cheaper to use 9 plus 0 plus the number I'm calling rather than just dialing 9 plus 0 and letting the operator handle the call?**

A. No. The calls are billed the same whether or not an operator assisted.

**Q. What areas are to be converted to TSPS, and when?**

A. All Boone County exchanges (442, 443, 449, 874, 875, 876, 445, 474, 882, 884, 886, 657, 641, 696, 698, 687) were converted Jan. 28, 1987. University exchanges (882 and 884) will convert on Feb. 11, 1987.

**Q. Can I dial international calls directly now that 9 plus 0 plus dialing is here?**

A. Yes, in most cases. However, international direct dialing will not be available until spring 1988 for those customers with the 474 prefix. Procedures for international direct dialing are as follows:

- For a direct dialed call, dial 011 plus country code plus telephone number. The call will be billed to the number the call is originating from.
- For an operator-assisted call, dial 01 plus country code plus telephone number. The AT&T operator will then come on the line to request billing information.

## Mizzou Credit Union

Loans • Checking Accounts • CUE Machines • Services

### CUE MACHINES

- 24 Hours
- 3 Columbia Locations
- 53 Locations throughout Missouri Arkansas & Illinois
- Now Available, 14,000 CIRRUS and BankMate locations throughout the United States

First & Broadway  
 P.O. Box 1795  
 Columbia, Mo. 65205-1795  
 7:30-5:30 M-F Closed 9-10 a.m. Tuesday 874-1477



University Libraries  
University of Missouri

### Digitization Information Page

Local identifier                      MizzouWeekly(print)

### Source information

Format                                      Newspaper  
Content type                                Text with images  
Source ID                                   Duplicate copies University Archives weeded out  
Notes

### Capture information

Date captured                              July-December, 2022  
Scanner manufacturer                      Plustek OpticBook  
Scanner model                                A300 Plus  
Scanning system software                    Book Pavilion  
Optical resolution                            600 dpi  
Color settings                                8 bit grayscale for majority of pages;  
    24 bit color for color illustrations/portraits/photographs  
File types                                      tiff  
Notes

### Derivatives - Access copy

Compression                                Tiff: LZW compression  
Editing software                              Adobe Photoshop 2022  
Resolution                                    600 dpi  
Color    same as captured  
File types                                      pdf created from tiffs  
Notes    Images cropped, straightened, and brightened.