

# MIZZOU WEEKLY

University of Missouri-Columbia

March 27, 1987



The Beaux Arts Trio will perform April 3. See the Calendar on Page 12 for details.

## Increasing retirement income

*Smart financial planning could lead to worry-free, golden retirement years.*

Ah, retirement. No more 8 to 5 workdays, time clocks or frustrating projects. But incomplete financial planning could mar those golden years for some retirees.

"I'm afraid many employees figure they'll rely solely on their University retirement and Social Security benefits," says Mary Ann Tipton, manager of UM Employee Benefits. "Neither of those plans are designed to completely support someone after he retires. Our retirement plan is designed to replace around 35 percent to 40 percent of a person's income." University employees can supplement

those retirement benefits by investing in the University's tax-deferred annuity plan.

Despite the potential benefit, only 22 percent of the University population is enrolled in a TDA.

"People may assume they have to be making a lot of money to be involved," Tipton says. "And anything with tax in its name automatically is unattractive to many people. Then there are always some people who are not thinking about the future and retirement."

A TDA shelters income from taxes. That money is invested into either fixed or variable accounts or a combination of the two and is withdrawn at a later time. Tax is paid on that money when it is withdrawn at retirement, usually when investors are in a lower tax bracket.

A fixed account is more stable with a guaranteed return. A variable account has potentially high returns, but there is no guarantee of a return. Employees can contribute a minimum of \$25 per month (a figure set by the University) to

one of 27 insurance and investment programs. Tipton says the average monthly deposit is \$250, but, there are many \$25-a-month participants. The University sends more than \$850,000 a month on behalf of its employees to the different companies.

"It's one way to save for the future. It's not designed to provide income for a vacation or home," Tipton says. There are penalties for early withdrawal.

The new tax law reduces the maximum annual contribution to a TDA from \$30,000 to \$9,500.

As part of Staff Recognition Week, Tipton and David West, professor of finance, will team up at noon April 7 in M640 of the Medical Sciences Building and noon April 9 in I Arts and Science Building to present "Financial Planning—Looking Ahead." They will cover various means of ensuring a financially stable retirement, including TDAs.

To find out more about TDAs, contact the Employee Benefits office at 882-2146.

## Welcoming newcomers

*When college is far from home, Mizzou's international students turn to friends and programs for support.*

College can be an intimidating experience for many students. But for Mizzou's 1,412 international students it's not just college, but also the country and the language that are foreign. The Office of International Student Programs and Services works to help these students feel at home. Its efforts are another component in the campus' retention effort.

International students provide a strong

support group for one another, but faculty and staff can help the students feel at home on campus and in the classroom. "The University on the whole is supportive of its international students," says Carl Leistner, assistant director for Student Development and director of the international student office. Mizzou is among the top 50 in the country in terms of international enrollment.

The top five areas in enrollment of undergraduate and graduate international students are engineering, 388; business and management, 130; social sciences, 129; agriculture/forestry, fisheries and wildlife, 126; and education, 126.

The largest number of students is from Taiwan, 208; followed by Korea, 154; China, 113; Iran, 109; and Malaysia, 109.

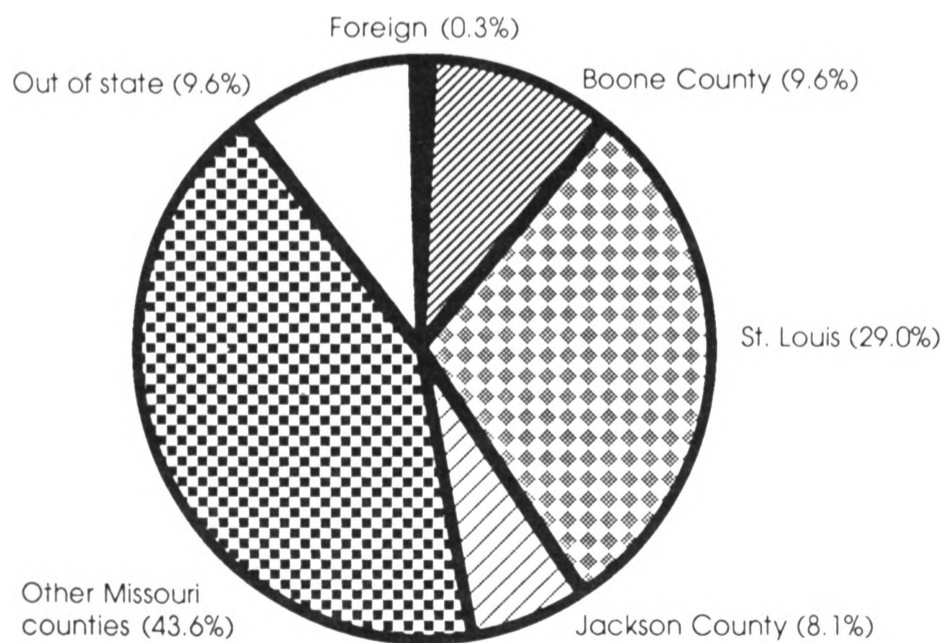
"We offer programming and activities to get the students together and to provide a presence for their ideas on campus," Leistner says. Those activities include the annual International Bazaar, held in the fall, and International Week, this year scheduled from April 13 to 18.

"Their two ongoing problems are money and language," he says. Government sponsors pay the expenses for many of the students. Those who aren't sponsored find it hard to keep up with the estimated \$10,906 needed each year for tuition and educational and living expenses.

Undergraduates can't enroll in classes unless they pass a mandatory language test. Those who don't pass the test enroll in the University's Intensive English Program. Last semester 50 international students took the Intensive English Program.

The students represent 109 different countries, an international resource that's unavailable elsewhere, Leistner says. "They provide a diversity to the student body and to campus," he says. "We don't take as much advantage of their presence as we should."

### Source of new students - Fall 1986



## Knight report moves units to campus

About 170 Columbia-based UM employees may be affected by a plan to move some administrative units from the system level to the campus, according to a report presented to the Board of Curators March 17. Current employees will be given preferential consideration for the campus jobs. Some employees, however, may have to relocate. The University will pay relocation

costs for employees who move to campus locations outside Columbia.

Highlights of the report are:

- All project-specific activities associated with grants and contracts with outside agencies will move to the campuses. The system will continue to be responsible for

Please turn to Page 2.

## Chancellor search open

The search for a Mizzou chancellor has been extended, President C. Peter Magrath announced at the March Board of Curators meeting.

"We must make sure that we have looked as far and as wide as possible to identify the best possible prospects—who in turn must be attracted to the difficult but exciting challenge," Magrath said. The screening committee will accept names of additional candidates until the position is filled, he added.

Two of the candidates already interviewed, Dean Corrigan and interim Chancellor Duane Stucky, have agreed to remain under consideration, Magrath said. Corrigan is dean of education at Texas A&M University.

In a statement, Stucky said he appreciated the opportunity to interview. "I welcome the addition of any applicants into the interviewing process. The committee should have the fullest access to all potential candidates."

Faculty Council Chair John Bauman, professor of chemistry, also issued a statement expressing support for continuing the search. "We are aware that our chancellor holds one of the most complex and difficult jobs in higher education today. Many constituencies must be satisfied in order for the chancellor to be effective. Not only is strong academic leadership required but also expert management skills. Interactions within the institution involving students, faculty and staff are only part of the task. Ties to alumni, the community, other campuses, central administration and state are also vital.

"On behalf of the faculty I pledge that we will continue to work very diligently with the president and the search committee to bring this search process to a speedy conclusion," he said.

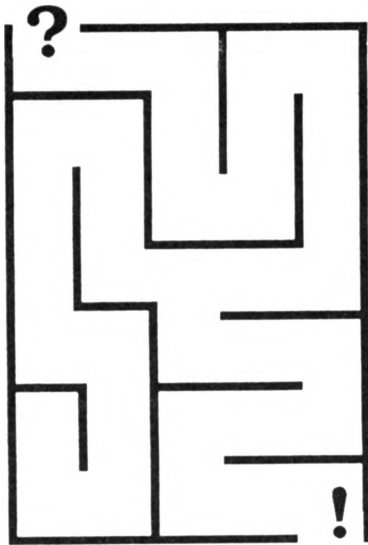
## LEARN TO PLAN, SOLVE PROBLEMS

More employee development seminars are coming up.

Lonnie Echternacht, associate professor of education, will lead "Effective Planning." The session, for office staff, will be held from 10 a.m. to 3 p.m. April 2.

"Problem Solving," for management/professional staff, will be held from 10 a.m. to 3 p.m. April 3. Instructor is Allen Bluedorn, associate professor of management.

The free seminars will be held in the Education and Development Center of the Heinkel Building. Call 882-4859 to register. Supervisory approval is required to complete registration.



## STUDENTS: SIGN MEASLES FORM ON DOTTED LINE

If there is a measles outbreak on campus, Mizzou students and teaching assistants without proof of immunization or immunity will be asked to leave school immediately. The policy was adopted last spring by the Board of Curators.

Several cases of measles have been reported in Columbia, and health authorities predict that an outbreak on the campus is likely. Students may check their records for proof of immunization at 225 Jesse Hall, 208 Brady Commons or Student Health Services.

Immunization/immunity forms are available at Student Health Services; 208 Brady Commons; Ellis Library

main lobby; and the student lounge in Memorial Union.

Measles shots are available at Student Health Services for \$5.

While the curators' policy does not cover faculty and staff members, those born after 1956 are advised to find out if their immunizations are up to date. If not, they should consider being immunized, says Diane Brukaradt, director of Student Health Services.

## SURVEY PLANNED OF LABORATORIES

Environmental Health and Safety is conducting a survey of all Mizzou laboratories. The survey will assess the campus' situation in view of the increasing number of state and federal laws and regulations dealing with hazardous waste management.

The survey will review all aspects of laboratory areas, including fume hoods, biological safety cabinets, storage of flammable and hazardous materials, and use of other major lab equipment.

Gardell Powell, loss prevention manager, will gather the data. With questions call him at 882-2705, or Jim Beckett, director of Environmental Health and Safety, at 882-7018.

# Report suggests restructuring

Continued from Page 1.

negotiation of indirect costs and cash management.

- The student loan accounts receivable activity now at the system level will move to the campuses.

- The campuses will be responsible for training new staff.

- Printing and Records Management Services will become a unit of the Columbia campus.

- The campuses will become responsible for most aspects of facility design, construction, rehabilitation and remodeling.

The system will continue to be responsible for hiring design consultants and management of the contracting processes.

- Campuses will be responsible for instruction computing and research computing.

James McGill, UM vice president for Administrative Affairs, says the restructuring is in response to last year's report of the Committee to Improve the University of Missouri. Charles F. Knight, chair and chief executive officer of Emerson Electric, headed the committee.

The Knight report directed McGill to

head a committee of the four campus administrative vice chancellors to study and recommend changes in administrative services. The committee based its work on the Knight report's statement that the University could be served best by a strong president and four strong chancellors overseeing administrative services on the campuses.

The board also heard a report on an international agricultural policy research institute proposed in cooperation with other land-grant universities. The institute could sponsor public forums on agricultural policy and provide unbiased reviews of ag policies, says Roger Mitchell, dean of agriculture.

In other matters, the curators approved a new Medical Practice Income Plan for the School of Medicine. Under the new plan, 16 percent of patient collections will go to the medical school before physician salaries and incentives are paid. In the past, physician salaries were taken from patient payments before an allocation went to the medical school.

The new plan gives the Medical School greater budget flexibility for supporting research and academic programs. About 75 percent of the school's 198 physicians voted to approve the plan earlier this semester.

In other business, curators:

- Leased space for a primary-care clinic, to be affiliated with University Hospital and Clinics, in Crossroads West Shopping Center, 2101 W. Broadway. "This new clinic will provide resident physicians with valuable experience in operating an office-based clinical practice," says Michael Whitcomb, dean of medicine. The lease on the 3,100-square-foot space runs from July 1, 1987, through June 30, 1992, at an initial annual cost of \$34,875.

- Awarded a \$253,500 renovation contract for the histology-cytology laboratory at University Hospital and Clinics to J.E. Novack Construction Co. of St. Louis.

- Awarded a \$309,000 contract for construction of the Mizzou power plant access road, phase II, to J.C. Industries Inc. of Jefferson City.



**EDUCATION AWARDS:** Five alumni will receive College of Education Citation of Merit awards at the April 4 Alumni Awards Banquet in Memorial Union. They are: Robert Elsea, EdD '60, of Chesterfield, Mo., executive director of St. Louis County's Special School District; Judy Parsons, M Ed '85, Columbia Public Schools Districtwide social studies coordinator; William Ray, M Ed '58, EdD '72, of Columbia, president and chief executive officer of the Missouri Association of Junior Colleges; Roger B. Wilson, M Ed '86, of Columbia, District 19 senator in the Missouri General Assembly; and O.V. Wheeler, M Ed '65, EdD '71, principal of Ridgeway Elementary School in Columbia.

**FOR SALE:** Slide abodia, accommodates 3,000 mounted transparencies on 30 vertical sliding trays with back lighting for easy selection. Original price: \$900 in 1979. To make an offer, call the Department of Classical Studies at 882-2665 or 882-3340.

The Materials Management Warehouse has the following Xerox products for sale to other University departments: 11 850 word processors; two 860IPS word processors; two 630 printers; one 620 printer; one 820 word processor, two 820II word processors; two 627 memory writers; and one 640 memory writer. All items still on hand April 15 will be sold at public auction April 25. For more information call 882-4912.

**TEACHING AWARD:** Faculty and students may nominate candidates for the Provost Outstanding Junior Faculty Teaching Award, made available with funds from the provost's office to recognize junior faculty for superior undergraduate teaching. Full-time, regular tenured or tenure-track assistant and associate professors with no more than five years of service are eligible.

Nominations should be sent through the appropriate dean's office. Each division may nominate from one to four candidates depending on faculty size. Nominations are due by 4:30 p.m. April 10 in 114 Jesse Hall. With questions call Otis Jackson at 882-2094.

**SURPLUS PROPERTY:** Due to a shortage of staff, the Surplus Property Warehouse located on Rock Quarry Road will be closed from 8 a.m. to noon on Mondays. During this time warehouse staff will pick up surplus property on campus. The warehouse will be open Monday afternoons and during regular working hours Tuesday through Friday.



## Mizzou Credit Union

Loans • Checking Accts • CUE PHONE • ATMs • Services

### CONVENIENT SERVICES

<ul style="list-style-type: none"> <li>• IRA Accounts</li> <li>• Certificated of Deposits</li> <li>• Savings with Split-Rate Dividends</li> <li>• Family Membership Accounts</li> <li>• Direct Deposit of Net Pay</li> <li>• Payroll Deductions</li> </ul>	<ul style="list-style-type: none"> <li>• Wire Transfers</li> <li>• Telephone Transfers</li> <li>• Travelers Checks</li> <li>• Money Orders</li> <li>• MasterCard/Visa — Cash Advances</li> <li>• Night Depository</li> <li>• Free Parking</li> </ul>
--	--



First & Broadway  
P.O. Box 1795  
Columbia, Mo. 65205-1795

7:30-5:30 M-F Closed 9-10 a.m. Tuesday
874-1477

## CAMPUS OPEN HOUSE AND BUS TOURS

April 22, 1987 10 a.m. to 2 p.m.

Buses will take visitors to open houses at Providence Point, Chancellor's Residence and Conley House. Bus tours are also available to view new campus construction - Agriculture Engineering, Ellis Library addition, Law Building and parking garages.

To enable scheduling for bus tours, please sign, clip and mail the form below to reach Visitor and Guest Relations, 103 Heinkel, by April 3. Bus routes will be announced in MIZZOU WEEKLY issue of April 17.

---

Name \_\_\_\_\_

Phone \_\_\_\_\_

Title \_\_\_\_\_

Office Address \_\_\_\_\_

Circle Preferred Time (s)

A. Open House Tour  
10 a.m. 11:30 a.m. 1 p.m.

B. Bus Tour of Construction Sites  
10 a.m. 11:30 a.m. 1 p.m.

## Program prepares future students

The School of Law will host the Council on Legal Education Opportunity (CLEO) Program for the second consecutive year this summer.

The intensive six-week preview of the legal education process helps prepare economically and educationally disadvantaged students for law school. It also helps evaluate the students' potential to succeed in law school.

"Having the CLEO program at the University again demonstrates the law school's commitment to affirmative action," says Bob Bailey, assistant dean. "It also identifies the campus in the minority community as one dedicated to attracting minority students."

This summer's program is expected to have 35 participants. Seven of last year's participants are now enrolled in Mizzou's law school. The school is one of 25 institutions in the program's southern region.



Vol. 8 No. 24

A publication of the University of Missouri-Columbia faculty and staff, published every Friday during the academic year and twice a month during the summer by Publications and Alumni Communication, a department of Development, University and Alumni Relations Division, 1100 University Place, 882-7357. News deadline is noon Friday the week before publication. Annual subscriptions are available to retirees for \$10. Faculty Council and Staff Council communication committee members: Donald Anderson, Bob Derryberry, Gary Fields, Linda Holsinger, Gordon Kimber, C. Kirk Leeper, Mary Miller, Barbara Olson Smith and Donna Turner.

Editor: Karen Worley  
Assistant editor: Carol Hunter  
Staff writer: Mary Vermillion  
Advertising coordinator: Sherrill Harsh  
Graphic editor: Larry Boehm



### CRAFT CATALOG DEADLINE NEARS

If you're a Missourian and do a craft well, you may want to apply to be in the second "Best of Missouri's Hands" catalog.

Application deadline is March 31. Forms are available from 628 Clark Hall.

To enter, you must submit two color slides of each item. One person may enter a maximum of three different items. There is a \$20 non-refundable entry fee regardless of number of entries. Artisans whose work is accepted for the catalog will pay a \$50 per item publication fee.

The catalog is a project of Alternatives for the '80s, sponsored by Mizzou, University extension and Lincoln University.

### OFFICES MOVE TEMPORARILY

The offices of Payroll, Student Loan, Third Party Billing and Refund have moved to a temporary location, 15 Jesse Hall. They will remain there for at least three months while their offices are being renovated.

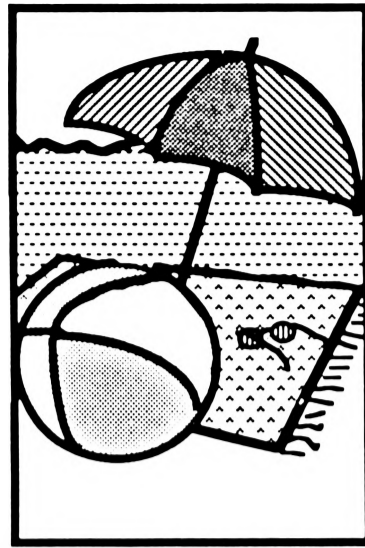
### DIVE INTO FUN AT CAMPUS POOL

The swimming pool at Lewis and Clark halls will be available to members and their guests from May 23 to Sept. 7. Hours are noon to 8 p.m. seven days a week.

A Red Cross certified lifeguard is on duty. Swimming lessons are available to members at no extra charge. Members also receive 15 free guest passes.

The pool has a shallow end for non-swimmers. There is a 1-meter diving board at the deep end.

Family memberships cost \$135 for the season. Individual memberships are \$70. There is a waiting list to join, so call Anita Blanchar at 445-2540 promptly if interested.



### TOUR CAMPUS SITES

Tour part of the campus during Staff Recognition Week April 6 through 10. Space is limited; call 882-6894 for reservations.

Tours of University Printing and Records Management Services will be available at 10 a.m. and 2 p.m. April 6. Power Plant tours will be conducted at 10 a.m., 2 and 3 p.m. April 7.

Research Reactor tours will be offered at 10 a.m. and 2 p.m. April 8.

Tours of University Hospital and Clinics will be available at 11 a.m. and 3 p.m. April 9.

All tours last one hour except the hospital's, which is 30 minutes.

# Interim chancellor visits Staff Council

Interim Chancellor Duane Stucky visited the March 12 Staff Advisory Council meeting to discuss improving the University's public image and ability to recruit students.

Stucky said television and radio commercials are inviting students to "Meet Mizzou." And he and other Mizzou representatives are crisscrossing the state to meet with prospective students and alumni groups.

The outreach effort may partly account for a 15 percent increase in students admitted to the University. Recent alumni and student events have been successful. A St. Louis Mizzou Night for prospective students that last year drew 200 high-school

students, this year attracted more than 560.

"There's a new excitement about the campus," Stucky said. "We need to build on that." Stucky said the increased interest could lead to more private and public funds, but "it's a long, hard road" to increased funding.

Stucky also outlined plans for a new alumni center in the center of campus. If the center is built, it also will house a faculty club. (See Page 1 March 13 Mizzou Weekly story.)

In the development area, Stucky said the University "is finding a lot of opportunities that previously had not been researched for funding."

He praised the Colleges of Arts and Science's and Education's collaborative effort to develop an upgraded curriculum for future teachers.

A query about prepaid tuition for families interested in sending their children to the University opened the question-and-answer session. A prepaid tuition plan would allow a family to pay tuition in the years before their child actually enrolled at a university.

Stucky said he was strongly in favor of such a plan, but added that passage of such a bill would boil down to legal and technical matters.

Council member Toni Gordon, assistant manager of Sameday Surgery at the University Hospital and Clinics, asked Stucky's view of Staff Council's worth to campus. Stucky responded that he shares the values envisioned for the council by former Chancellor Barbara Uehling who established it in 1978. "Staff Advisory Council is not utilized as much as it could be, however," he added.

In answer to a question on the effect of private fund-raising on state capital appropriations, Stucky said, especially in regard to capital funds, the state legislature is more willing to give state funds if the University has outside private support for a project.

In other business, council members Larry Windmoeller, assistant manager of the University Hospital Pharmacy, and Bill Forbis, a machinist/welder with Campus Facilities, volunteered to represent the council on a campus smoking task force committee.

Windmoeller asked council Chair Jo Pflieger to draft a letter to the University Bookstore and the Missouri Book Store, urging them to carry University "spirit" items. Windmoeller says he was dismayed when he couldn't find a Big Eight champion item in the book stores after the Tigers captured the Big Eight basketball crown.

"We say we're looking for ways to bring students together," he said. "Something as minute as that could do it."

## The Honorable Senator Roger Wilson

Speaking on  
"Legislation and Appropriations"

is being presented by the University Club  
April 2, 1987  
at a 7 p.m. dinner in the  
Benton-Bingham Room, Memorial Union

Cost: \$8

Please contact the English Department  
882-6066  
for reservations  
by 3 p.m. Tuesday, March 31, 1987.

## ==> Let's Compute!\_

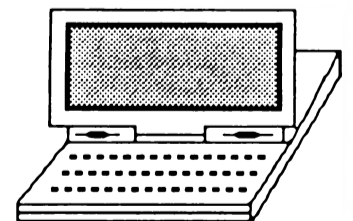
A long time ago, a pen and paper was revolutionary. It took a few years, but man has finally found something better. It's called a **PC Convertible** and it's made by IBM.

Just like a pen and paper, the Convertible can help you with your work any where you choose to do it: in the classroom, in a meeting, at home, or in the car on the way back and forth.

For a limited time only, you can get a special deal on this special product.

For only **\$999**, the Convertible comes with:

512K memory  
DOS 3.2  
Enhanced LCD display  
Compact carrying case  
Choice of charger



Contact the **Computing Services Demo Room**,  
102 Lefevre Hall, 882-9400 for more  
information.

This is a special promotion in cooperation with IBM. Supply is limited. Availability is based on a first come first served basis, with a hand-carried IDO or check.

# Q&A

**Q.** Recently, while walking on the MKT fitness trail, I noticed a very high prison-type fence with barbed wire on top that is apparently owned by the University. A sign on the fence says something to the effect "No Trespassing—Property of the University of Missouri." I would think with the high deer population in that area that the University would have constructed a shorter fence without the barbs. What does it surround?

**A.** The fence surrounds an agricultural research area. Larry Darrah, research geneticist with the College of Agriculture, says the land is used for corn research. "The fence was constructed to keep people, and more importantly, four-wheel-drive vehicles that have driven into the area off the land," he says.

Darrah says the south and north ends of the plot have been left open, so deers are not denied access to the area. "We've only had one deer get caught and that was in one of our ordinary fences," he says.

**Q.** Does Campus Mail have a policy concerning whether its mail deliverers can or can't smoke while they deliver mail to University offices?

**A.** According to David Mize, assistant manager of Campus Mail Services, the department will follow any policy issued by the recently established smoking task force. "Until the campus policy is in place, we have nothing that states whether our employees can or can't smoke," Mize says.

**Q.** How often is the Personnel job va-

cancy listing on UMCVMB updated? I looked at the listing on Feb. 27 and it had not been updated since Feb. 9. What good is it if it doesn't get updated more often than this?

**A.** According to Charles Hunter, manager of Employment Services, two factors prevented staff members from updating the job vacancy listing in February. The Personnel Office's computer system was down for a week, and the system was switched from the University system VMA box to the campus VMB box. The listing was not updated during those times. Hunter says normally the listing is updated each week by Monday.

**Q.** The Mizzou Credit Union closes each Tuesday from 9-10 a.m. What goes on inside the Credit Union at that time?

**A.** No, Tuesday morning isn't set aside for secret meetings or wild parties behind the Credit Union's closed doors. According to Christine McGraw, director of marketing, a staff meeting is held at that time to discuss, among other things, new promotions and services, and to orient new staff members to their jobs.

**Q.** Why did the Employee Assistance Program mail its program brochure to my home address rather than sending it through campus mail?

**A.** "The programs are open to all family members, so, every other year, we mail the brochure to University employees' homes. We want all members of the family to have access to the programs if they ever need them," says EAP Program Director Betty Hosokawa. Budget restraints prevent EAP from mailing the brochures directly to employees' homes every year. Every Mizzou employee received an EAP program brochure.

Send your questions about campus matters to Mizzou Weekly, 1100 University Place. You must include your name and phone number so we can reach you, if necessary.

## Assistant named

A journalist and teacher turned fundraiser has been appointed by President C. Peter Magrath to be assistant to the president and executive director of University development.

Rich W. Turner currently is assistant to the president of Occidental College in Los Angeles, where he is responsible for corporation and foundation giving. He will take up his \$65,000 a year University post April 20.

Turner's position is a new one in the UM administration, recommended by the Knight Report and by a consulting firm that advises the University on fund raising. Turner will arrange the president's participation in fund-raising activities conducted by the four UM campuses.

He earned a bachelor's degree in English, a master's degree in journalism and a doctoral degree in social science from Syracuse University. He has been a reporter and editor for the New York Post, Syracuse Post Standard and United Press International. Turner taught journalism at Syracuse and at California State University before moving into fund raising.

# LETTERS

## Eliminate ugly surface lots

Editor:

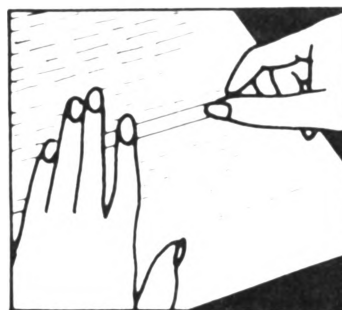
I would like to compliment the planning committees that are working toward the elimination of the ugliness caused by surface parking on the campus. A pedestrian/bicycling campus will be welcomed by all those who treasure the beauty of the University.

I would note, however, that pedestrians and bicycles should not be co-mingled on pedestrian walks. They are not compatible. Separate bicycle paths should be provided throughout the campus, leading to attractive bicycle parking areas shielded by greenery to avoid visual blight.

**John T. O'Connor**  
chair, Department of Civil Engineering

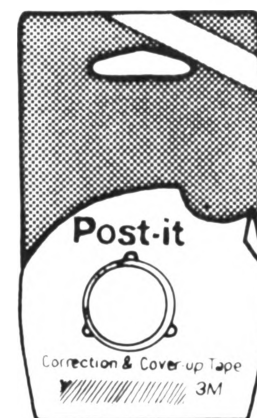
## Cover-up tape... now in 3 sizes.

General Stores now carries 3M cover-up tape for editing and correcting lines of type. These white



strips lay flat, and photocopy without leaving lines. They peel back, too (just like a Post-it-note). They come in three sizes, one-line, two-line, and now—the brand new six-line capacity, just in.

Cover-up tapes allow you greater versatility when you type documents, and when you make photocopies. If you've never used this new product, you'll love finding out just how handy it is!



1-line tape: Stock #123A  
2-line tape: Stock #123B  
6-line tape: Stock #123C

Check with us first

**General Stores**  
Office, janitorial and maintenance supplies  
**882-6906**

from the can do crew

## Looking for Information?



# LITQUEST



## UMC LIBRARIES ONLINE SEARCH SERVICE

is now offering a  
**25% discount**  
on daytime searches  
for UMC faculty, staff, and students

For more information, ask at the  
General Reference Desk, Room 201  
Ellis Library, or call the  
LITQUEST Office at 882-4692.

David Dunn, professor of biological sciences, displays the Agave that may bloom for the first time in 63 years.



Piet van Lier photo

# Almost in rare bloom

Folks around Tucker Greenhouse are as anxious as expectant parents. Their "baby," a 21-foot Agavecea that's approximately 63 years old, is expected to bloom any day now.

David Dunn, professor of biological sciences, says the plants only flower once every 50 to 60 years and this is probably the first time an Agave has flowered in Missouri. In fact, it may be the only specimen of its kind in the state.

The University acquired the plant 25 years ago when a retired couple decided it was too much trouble. In warm weather they moved the Agave, bedded in a wash-tub, outside. Before frost, they had to move it back inside. Besides, it had never flowered and they weren't sure it ever would.

They were probably correct when they decided the plant would not flower, Dunn says, because the roots did not have enough room to grow inside the washtub. After the plant found its new home in the greenhouse soilbed, its leaves shot from 2 feet to 4 feet in length. Now the leaves are 5 to 6 feet

long and the plant grows about a foot every week.

Gary Schnurbush, greenhouse manager, had to remove a ceiling pane from Tucker Greenhouse in early March because of the plant's growth. Schnurbush pruned back the plant's leaves when they obstructed the greenhouse's pathway. The hooked spines on the leaves, meant to deter hungry animals, also inhibited plant-watchers.

Dunn says the pruning may have caused the plant to bloom. Unseasonably cool weather in early March threatened to freeze the exposed top of the plant, but Schnurbush covered it with a plastic tarp to protect it.

The plant is native to Mexico, and it is put to good use there. The fibrous leaves of the Agave are used to make rope and detergents. It is also used to make a homemade

brew called pulque (pul-kay). Dunn says avid pulque drinkers can be identified by their speech. Too much of the brew seems to lead to a high-pitched voice. A more familiar brew, tequila, is made from a plant akin to the Agave.

If you want to take a look at the ancient plant in bloom, you've got the rest of this

year to do it. The seed production and flowering process will go on throughout the year, Dunn says. Then the central stalk will die. But several root shoots, which have already grown 3 to 4 feet, will live another 50 to 60 years. It will probably be just about that long before any of the babies bloom.

—Mildred Robertson



POT THROWING  
ORIENTAL BRUSH  
PAINTING  
WEAVING  
BASKETRY  
CARTOONING  
PHOTO  
CHILDREN'S  
WORKSHOP

## MSA Craft Studio and Photo Darkroom

203 Brady Commons

Workshops begin the week of March 30

Call the Craft Studio for more information, 882-2889

Check the March 27 Maneater for coupon

Publicity funded by MSA General Services Division and GPC.



## Need Multiple Copies at Night or on Weekends?

Grants, manuscripts and proposals are not always written between 9 and 5. If you are working on projects in the evening or on weekends and "quick copy" is closed come to

## Ellis Library Copy Service

On the second floor of the main library

We can run multiple copies, collate, and staple for you, all for only 5¢ a copy.

And, of course, we can also reduce, enlarge, make 11x17 copies and colored paper copies.

Hours: M-FRI 8-11 PM  
SAT 9-9 PM  
SUN Noon-Midnight



**Jane Rigdon**  
Chief animal technician

Jane Rigdon works with a bunch of rats. But she's not complaining. As chief animal technician in the Medical School's Laboratory Animal Medicine department, Rigdon supervises the care of 486 white laboratory rats, along with other members of the school's menagerie. The laboratory animals, which are housed at 154 Medical Sciences Building according to

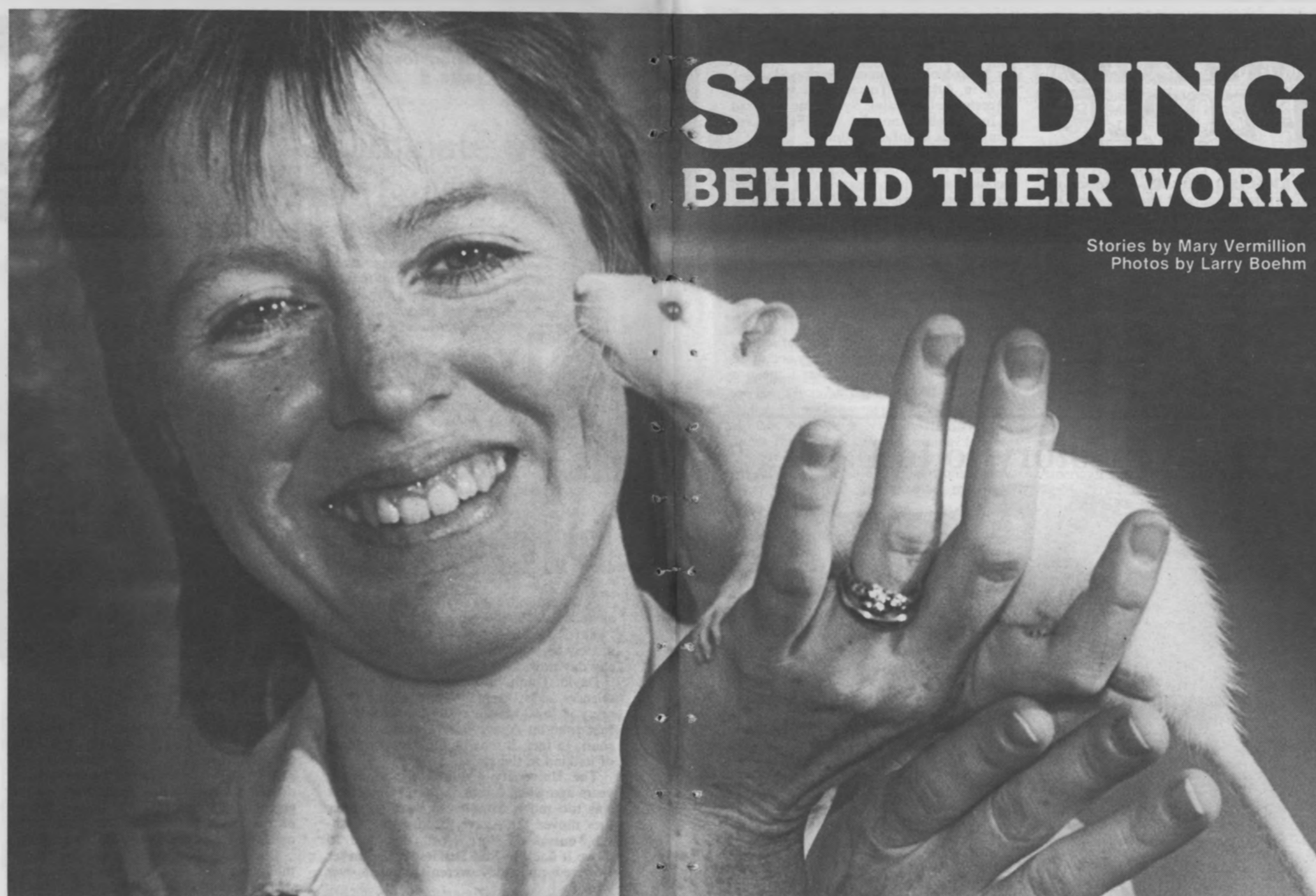
stringent National Institutes of Health guidelines, are used in the school's research projects. "Rats have a bad reputation, but along with mice they're the backbone of medical research. They're really sociable, docile animals," she says. Rigdon, who is working on her bachelor's degree in English, says it was her love for animals that attracted her to the job. "We owe our good health to research animals. We have a responsibility to provide for their well-being as best we can."



**Ted Turner**  
Lead fire inspector

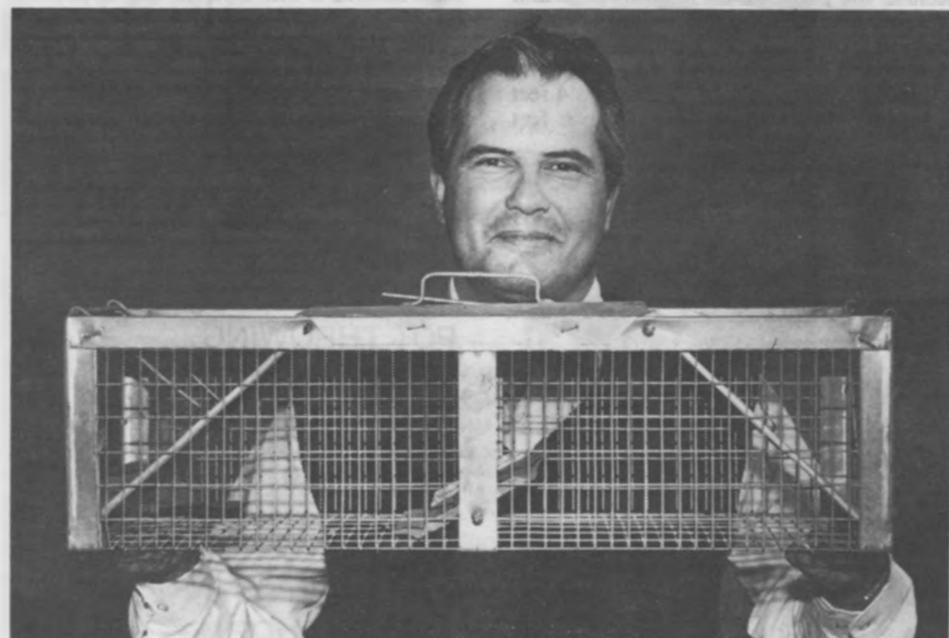
"There's not a building on campus where I don't have business," boasts Ted Turner, Mizzou's lead fire inspector. Turner is one part of a Campus Facilities two-man team that inspects all 3,500 campus fire extinguishers. The team inspects and installs fire equipment, responds to fires and recommends the best type of

extinguisher for a building. On call around-the-clock, Turner has to be ready to respond to an emergency at any moment. But Fridays are the most alarming day on the job. "We ring fire alarms from 6:30 a.m. to 3:30 p.m. every Friday to make sure they're all working." Turner, who this year marks his 26th year with the University, also teaches fire safety classes. "A lot of potentially dangerous fires have been stopped by a fire extinguisher. You just never hear about it."



**STANDING BEHIND THEIR WORK**

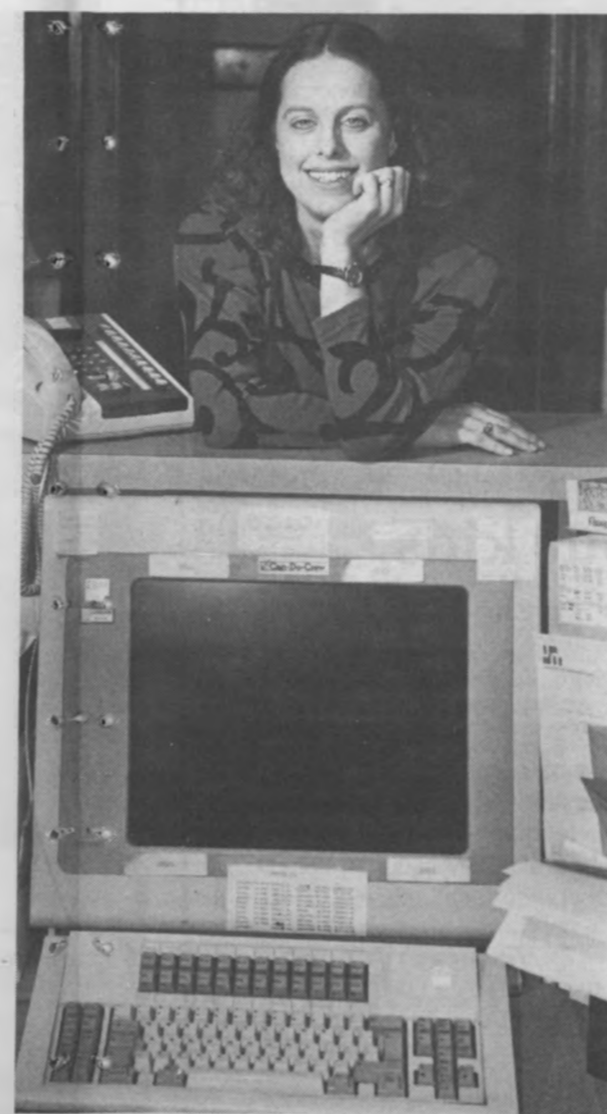
Stories by Mary Vermillion  
Photos by Larry Boehm



**John Wingate**  
Lead pest controller

While the University sleeps, John Wingate rids the campus of unwanted visitors. As lead pest controller in Campus Facilities, Wingate is on call 24 hours a day, but the bulk of his work is done from 3 to 11 p.m., when he and the two other members of the staff complete preventative pest maintenance or remove animals, such as skunks, from campus buildings. He also teaches campus units about pest control and has served as a pest-control consultant for other universities.

Wingate, president of the 200-plus member Missouri Pest Control Association, says roaches and spiders are the most common pests at Mizzou, followed by rodents, pigeons and bats. "We try not to hurt anything we capture," he says. Once, the pest-control team spent three hours removing a cantankerous raccoon from Walter Williams Hall. It was released in the woods behind the General Services Building, as are other animals that Wingate and his crew round up. "It's convenient for the University to have its own in-house pest control," he says. "We can guarantee better service and less problems."



**Linda Williamson**  
Supervisor

So you think your office phone rings off the wall. Computing Services' Lefevre Hall Help Desk averages more than 100 calls a day from faculty, staff and student computer users. Supervisor Linda Williamson leads the five-person crew that answers questions from 7 a.m. to midnight. "We get anything from simple to complex questions," she says. A few odd calls pop up, too. "I've had people call to see what time it is. One person wanted to know the true equation of pi." Williamson and her staff answer 85 percent of the questions, but if a question stumps them, they'll refer it to someone on the technical staff. "You have to think quickly," she says. "One call will be a mainframe question. The next will be for a PC."

Mizzou Weekly singled out five staff members with out-of-the-ordinary campus jobs and found that they, like the other 6,657 staff members, provide vital support that enables the University to reach its missions of teaching, research and service.



**Elbert Moore**  
Service supervisor

Giant chocolate chip cookies, bubble gum, doughnuts. That's the world of Elbert Moore, a master at the science of stocking campus snack bars. The only male on an all-female Campus Dining supervisory team, Moore is in charge of inventory at the five campus snack bars. He's been with the University since August, moving over to his current

position after a stint as a cook at Pershing Hall. "He has a lot of good ideas. He got ahead by the virtue of his talents," says Lorraine Kalen, Campus Dining's interim general manager. It was Moore's idea to offer hot lunches and breakfasts at the snack bars. "The snack bars are five completely different units," says the soft-spoken Texas native. He says snacks are popular at the Jesse Hall location, while full-blown meals are the big sellers at the snack bar serving Lewis and Clark halls. "We take our time to individualize each unit."



Eminent soprano Wilhelmenia Fernandez will give a campus recital April 2.

## Noted singer to perform

Internationally acclaimed soprano Wilhelmenia Fernandez, featured in the award-winning French film *DIVA*, will perform 8 p.m. April 2 in the Fine Arts Recital Hall. Proceeds from the recital will benefit the University of Missouri-Columbia Opera.

A native of Philadelphia, Fernandez came to prominence as Bess in the 1976 Houston Grand Opera production of "Porgy and Bess." Following a two-year European tour and a successful Broadway run in that role, she appeared with major opera companies throughout North and South America and Europe. Her international career on the opera stage and in the concert hall continues today.

George Darden, visiting assistant professor of music and artistic director of the University opera, will accompany Fernandez on the piano.

Fernandez will perform arias from Puccini's "La Boheme," Korngold's "Die Tote Stadt" and Catalani's "La Wally." Following intermission she will present several songs by George Gershwin, including "Summertime" from "Porgy and Bess." Members of the University Opera will join her for the Finale, Act IV from "The Marriage of Figaro" by Mozart and several spirituals.

Following the performance, the audience is invited to a reception in Fernandez's honor at the chancellor's residence.

Tickets are \$7 faculty and staff, \$5 students. Jesse Box Office will be open 10 a.m. to 4 p.m. March 27-31 and April 1-2. For information call 882-3871 or 882-2604.



## MIZZOU PEOPLE

**H. RICHARD ADAMS**, professor of veterinary medicine and chair of the Department of Veterinary Biomedical Sciences, was a distinguished lecturer in the Department of Physiology at the Louisiana State University School of Medicine in New Orleans. He presented a lecture on cardiodynamics during shock and trauma and participated in a variety of faculty-student research conferences.

**JOHN BERG** and **ROBERT SOLORIZANO**, professors of veterinary medicine; **MANUEL J. TORRES-ANJEL**, associate professor of veterinary medicine; **DAVID**

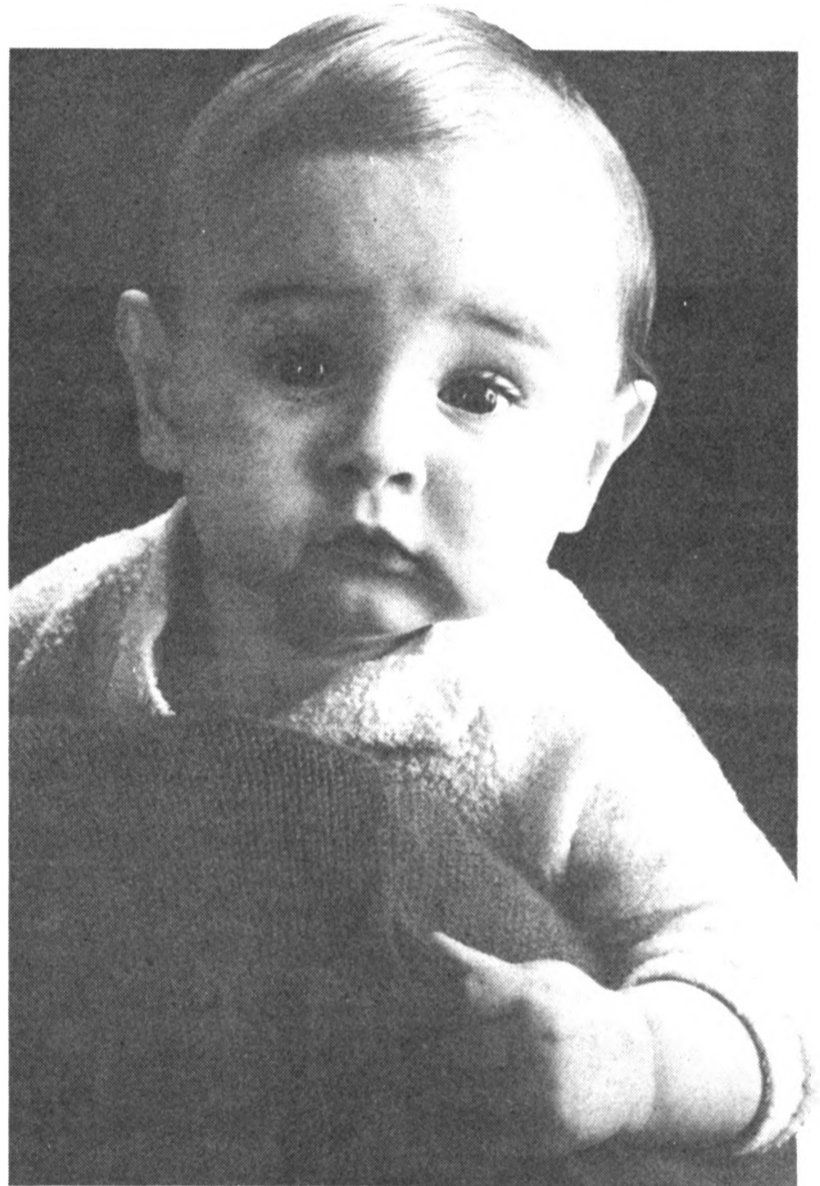
**WENDELL**, coordinator of instructional lab; and **MIKE JOHNSON**, senior research assistant, attended the American Society for Microbiology annual meeting March 1 to 6 in Atlanta. Torres-Anjel presented "Accelerated Wasting Syndrome Induced by Intracerebral Inoculation of Feline Leukemia Virus in Infant Felines."

**ROBERT J. BIRKENHOLZ**, assistant professor of practical arts and vocational-technical education, is serving as editor of the Missouri Agricultural Education Bulletin.

**ARDEN BOYER-STEPHENS**, assistant director of Missouri LINC, wrote "What is LINC?" and "Community Colleges Help Special-Needs Students" for the January-February issue of the Missouri Association of Community and Junior Colleges newsletter.

**DONN BROLIN**, professor of educational and counseling psychology and director of the Life-Centered Career Education Please turn to Page 9.

## We have a story to tell . . .



## and it's all about kids.

Our story is about special kids, kids battling all kinds of illness, disease and injury. It's about kids who need our help! If you haven't yet experienced the magic of the Children's Miracle Network Telethon, we would like to share our story with you.

Representatives from The Staff for Life will be happy to come to your staff or departmental meetings. We want to share our story with our campus colleagues and answer any questions you may have about our telethon. To experience the magic of mid-Missouri's telethon for yourself, call 882-KIDS.

Children's  
Miracle Network  
Telethon



May 30-31, 1987

UNIVERSITY OF  
MISSOURI-COLUMBIA  
HOSPITAL & CLINICS



For more information  
call 882-KIDS

## Meet the backbone of Brady's.



One reason Brady's Grill is such a pleasant place to eat is Virginia Council.

Behind the scenes, Virginia keeps constant stock in the salad bar, replenishes all desserts and snacks, and keeps behind the

counter spotless.

Come in and see for yourself how smoothly Brady's Grill runs. Virginia takes pride in her work, and at Campus Dining Services we're proud of her.

Celebrate Staff Recognition Week with us.  
Specials at all Campus Dining Services Restaurants.  
April 6th-10th

Continued from Page 8.

Program, was selected secretary of the Commission of Certification of Work Adjustment and Vocational Evaluation Specialist during its semiannual meeting in Orlando, Fla. He also presented a series of workshops to area Educational Service Centers in February in LaCrosse, Wis., and Jeffersonville, Ind.

**MICHAEL J. BUDDS**, instructor in music, contributed 27 articles to the newly published New Grove Dictionary of American Music. Budds recently defended his doctoral dissertation, "Music at the Court of Queen Victoria," at the University of Iowa.

**PAUL F. CASEY**, associate professor of German, has received an International Research and Exchange grant for research in the German Democratic Republic. He will be based at the University of Jena and will study the archives there and in Weimar and Zwickau for unpublished material on Paul Rebhun, a 16th century dramatist. Casey also has received a National Endowment for the Humanities summer seminar fellowship. He will attend the seminar at Mt. Holyoke College and study the relationship between music and literature in medieval times.

**TANDRA CHAUDHURI**, research assistant professor, presented "Immunochemical Analysis of Merozoite Surface Antigen (Pf 43mz) Isolated from Plasmodium Falciparum" to the national meeting of the American Society for Microbiology March 4 to 6 in Atlanta.

**GEORGE CONSTANTINESCU** and **BRENT D. JONES**, associate professors of veterinary medicine, had "The Feline Liver: What a Practitioner Needs to Know" and "The Feline Liver: Identifying and Treating Its Diseases" published in the February 1987 issue of Veterinary Medicine. Jones presented "The Principles of Endoscopy," "Upper Gastrointestinal Endoscopy in Small Animal Veterinary Medicine," "Bronchoscopy in Small Animal Veterinary Medicine" and "Endoscopy Laboratory" at the meeting of the Long Island Veterinary Medical Association March 11 to 13 in New York.

**ROSS COWART**, assistant professor of veterinary medicine, attended the American Association of Swine Practitioners annual meeting March 9 to 11 in Indianapolis.

**JAMES M. CURTIS**, professor of Russian, has received a summer stipend award from the National Endowment for the Humanities to support work on his project, "The Major Plays of Anton Chekhov in Their Socio-Cultural Environment." His work on this project, to be done during the 1987-88 academic year, will also be supported by a University research leave.

**WALTER C. DANIEL**, professor of En-

glish, had "De Lawd" and "The Green Pastures" published by Greenwood Press; "Shaq and O'Casey on Their Native Ireland" in the December 1986 Journal of Ethnic Studies, Hampton University (Va.); "James E. McGirt (1874-1930)" in the Dictionary of Literary Biography, Vol. 50, Afro-American Writers Before the Harlem Renaissance; and he co-wrote "Gwendolyn Bennett (1902-1981)" and "Walter Francis White (1893-1955)" for the Dictionary of Literary Biography, Vol. 51, Afro-American Writers from the Harlem Renaissance to 1940.

**ROBERT B. DENHARDT**, research professor of public administration, was reappointed chair of the Governor's Advisory Council on Productivity by Gov. John Ashcroft. Denhardt, originally appointed by former Gov. Kit Bond, has held this post for four years. Denhardt recently conducted an internal review of the public administration program at Evergreen State College in Olympia, Wash.

**ALBERT J. DEVLIN**, professor of English, lectured on "The Later Work of Tennessee Williams: The Two-Character Play and Clothes for a Summer Hotel" at the American Literature Forum, South Atlantic Modern Language Association Nov. 14 in Atlanta. He served as guest editor of the fall issue of the Mississippi Quarterly, a special issue marking the 50th anniversary of Eudora Welty's literary career.

**MICHAEL DYRENFURTH** and **NIEL EDMUNDS**, professor and associate professor, respectively, of practical arts and vocational-technical education, organized and conducted a workshop in St. Louis on integrating math and science concepts into the industrial education curriculum. The workshop was a joint effort of the industrial art division of the American Vocational Association and the National Science Foundation.

**MOHAMAD ELDEIB**, senior research specialist in veterinary medicine, presented a paper, "Secalonic Acid D Induced Palatal cAMP and cGMP Changes in Developing Mice" at the 26th annual meeting of the Society of Toxicology Feb. 23-27 in Washington. **C.S. REDDY**, associate professor of veterinary medicine, co-wrote the paper.

**CHRISTOPHE GADENNE** received a grant from his employer, the National Institute of Agronomic Research of France, to visit the Department of Entomology from January to April to research the physiology of insect diapause with **MICHAEL CHIPPENDALE**, professor of entomology.

**THOMAS GOOD** and **RICHARD ROBINSON**, professors of curriculum and instruction, recently had their book, "Becoming an Effective Reading Teacher," published by Harper and Row.

## Staying fit in the '80s

People who are sick normally seek medical attention to cure their ills. Few people, however, seek medical attention to maintain wellness. But health professionals are making an effort to change those attitudes. "Total fitness" and "wellness" are the buzz words for the '80s.

Many businesses are instituting fitness programs in the workplace. Employees of Johnson & Johnson Co. Inc., which put a gym in its building, can work out during their free time. The result has been lower insurance premiums and less absenteeism.

To help faculty and staff members make healthy lifestyle choices, the School of Health Related Professions is sponsoring a conference called "Health for Human Wholeness" April 2 and 3.

HRP Director Rich Oliver says wellness means maintaining a healthy physical, emotional, spiritual, social and intellectual environment. If any one of the areas is out of balance, it is likely to have impact on all other areas, and can lead to illness.

The conference itself is just as diverse as the elements that make up the "total person" concept. Diane Brukardt, director of Student Health Services, will address the issues of alcohol and drugs on campus. Parris Watts, director of the Athletic De-

partment's Student Athlete Total Person Program, will discuss the total fitness program in his department, and Brent Park, a cardiologist from the University Hospital and Clinics, will tell participants how to keep a healthy heart.

The conference will feature Bill Hettler, director of health services at the University of Wisconsin. Hettler is noted as one of the founding fathers of the wellness movement, particularly on university campuses.

Oliver says one of the themes of the conference will be the active involvement of the individual in preventative medicine. He says an individual can aggressively seek wellness by taking yearly physicals and eliminating cigarette smoking. Women should get annual pap smears and conduct monthly self breast-examinations. Physical fitness is another integral part of staying well.

Registration for the conference is \$10 for faculty and staff, and \$5 for full-time students. For more information call 882-4105.

Oliver says he hopes this conference will make University employees aware of the part they play in their own wellness, and also alert them to the resources available on campus to help them enjoy a healthier life.

Women at Mizzou unfortunately  
have equal opportunity . . .



equal opportunity for cancer,  
heart problems and job-related stress.

Take time to be good to yourself and participate in

## Women's Health Day

Friday, April 3, 1987

Memorial Union

### Schedule

- |  |   |
|--|---|
| 11 a.m.-2 p.m.<br>Memorial Union S8    | Health Screenings<br>Blood Pressure<br>Blood Cholesterol (no fasting required before test)  |
| 11 a.m.-2 p.m.<br>Memorial Union S8    | Information displays<br>Stress • Weight Control/Nutrition<br>Osteoporosis • Breast Self-Examination   |
| 11:30 a.m.-1:30 p.m.<br>Memorial Union | Educational Programs  |
| 11:30 a.m., S3                         | "Stress and the Professional Woman"<br>Vicki Straub, Ph.D., Assistant Professor, Family and Community Medicine, UMC School of Medicine  |
| 11:30 a.m., S4                         | "Osteoporosis"<br>Georgia B. Nolph, M.D., Associate Professor, Family and Community Medicine, UMC School of Medicine  |
| 12:30 p.m., S3                         | "Breast Self-Examination"<br>Edith Mitchell, M.D., Associate Professor, Hematology/Oncology, UMC School of Medicine   |
| 12:30 p.m., S4                         | "Tips on Diet and Exercise"<br>Margaret Flynn, Ph.D., Professor Emeritus, Family and Community Medicine, UMC School of Medicine and Ben Londeree, Ph.D., Associate Professor, UMC Health and Physical Education |

For more information  
call 882-1008.

UNIVERSITY OF  
MISSOURI-COLUMBIA  
HOSPITAL & CLINICS



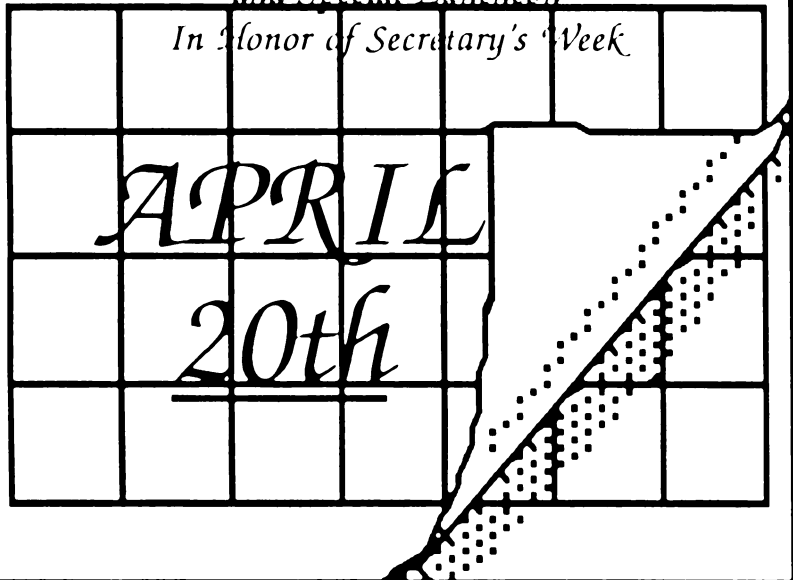
*The Staff for Life*



# Attention Secretaries!

Mark Your Calendars for University Bookstore's Office Products/Computer Products Show and Special Luncheon

In Honor of Secretary's Week



Letty Cottin Pogrebin of Ms. Magazine will lecture April 3.



## Examining family issues

Letty Cottin Pogrebin, editor of Ms. Magazine and author of "Family Politics," will present this year's Margaret Mangel lecture at 9 a.m. April 3 at the Ramada Inn, 1100 Vandiver Drive. Her topic will be "The Impact of Public Policies on the Family."

Pogrebin's lecture will touch on the hidden biases against families, the place of families in today's society, and the use and misuse of family policies in American politics.

"The lecture is of two-fold interest," says Bea Smith, dean of the College of Home Economics, which sponsors the annual Mangel lecture. "Letty Cottin Pogrebin herself is a success story in her corporate position, in the board memberships she holds and in the acclaim that she has gathered as a speaker and writer."

"She also has expertise in an area of importance to all of us as we are a member of a family unit. We are keenly aware that the American family is of political interest. The family can be used or abused as a political

topic."

Pogrebin is the author of several books and has written articles for The New York Times, Good Housekeeping, and other publications in the United States, Canada and Britain. She has written columns for Newsday, The New York Times and Ladies Home Journal.

She won the Distinguished Achievement Award of the Educational Press, an Emmy Award for "Free to Be...You and Me," and the National Media Award of the Family Service Association.

She serves on the board of directors of Action for Children's Television, the Child Care Action Campaign and the International Center for Peace in the Middle East.

The Margaret Mangel Lecture is named for the former dean of home economics. This year the lecture is presented cooperatively with the Missouri Home Economics Association annual meeting. Additional financial support is provided by the March of Dimes Birth Defects Foundation.

## EXHIBITS

- Hours are 10 a.m.-5 p.m. weekdays and 3-5 p.m. Sundays.
- ROGERS GALLERY:** Historic preservation research by Toni Prawl on the Cornett Farm of Linneus, Mo., will be on display through April 11 in Stanley Hall. The display is part of the centennial celebration of the Hatch Act, which established agricultural experiment stations.
  - FINE ARTS GALLERY:** "Three Generations of Weston Photography: Edward, Cole and Kim" will be on display March 29-April 17. Hours are 9 a.m.-3 p.m. weekdays and 2-4 p.m. Sundays.
  - HOSPITAL AND CLINICS:** "Art for Life," featuring "Selections from 'Watercolor U.S.A.' and pottery painted by local artist Keith Crown will be on display in the main lobby concourse through April 31.
  - MUSEUM OF ART AND ARCHAEOLOGY:** "American Art Since 1945: Selections From The Permanent Collection" will be on display through early May. Hours are 8 a.m.-5 p.m. Tuesday through Friday and noon-5 p.m. weekends.
  - JESSE HALL DISPLAY CASE:** "Women's History Month" will be on display through March 31.
  - BRADY COMMONS GALLERY:** "Staff Recognition Week Staff Art Exhibition" will be on display March 30-April 9
  - BRADY COMMONS GALLERY:** "International Student Show" will be on display through March 27. Hours are 10 a.m.-5 p.m. weekdays and 3-5 p.m. Sundays.
  - ELLIS LIBRARY DISPLAY:** Information on the Women Studies Program will be on display in the second floor exhibit case through the end of March.
  - MISSOURI CULTURAL HERITAGE CENTER:** "Social Fabric: A Study of Cornett Family Textiles" will be on display through March 31 in the Conley House, second floor. Hours are 8 a.m.-5 p.m. weekdays.

# NBC This Week 8 KOMU-TV COLUMBIA

MARCH 27 -- APRIL 2

- FRIDAY, MARCH 27:**
- 5:30 NBC Nightly News
  - \* 6:00 NEWSCENTER 8
  - \* 6:30 Wheel of Fortune
  - 7:00 Roomies
  - 7:30 Amazing Stories
  - 8:00 Miami Vice
  - 9:00 Stingray
  - \*10:00 NEWSCENTER 8
  - 10:30 The Tonight Show
  - 11:30 Friday Night Videos
- SATURDAY, MARCH 28:**
- \* 6:30 Bullwinkle
  - 7:00 Snorks
  - 7:30 Gummi Bears
  - 8:00 Smurfs
  - 9:30 Alvin and the Chipmunks
  - 10:00 Footur
  - 10:30 Punky Brewster
  - 11:00 Lazer Tag Academy
  - 11:30 Kidd Video
  - \*12:00 World Cup Skiing
  - \* 1:00 Program Yourself for Success
  - \* 2:00 Runaway with the Rich and Famous
  - \* 4:00 Lorne Greene's New Wilderness
  - \* 4:30 Bill Dance Outdoors
  - \* 5:00 The Norm Stewart Show
  - 5:30 NBC News
  - \* 6:00 NEWSCENTER 8
  - \* 6:30 Wheel of Fortune
  - 7:00 Facts of Life
  - 7:30 227
  - 8:00 The Golden Girls
  - 8:30 Amen
  - 9:00 Hunter
  - \*10:00 NEWSCENTER 8
  - 10:30 Saturday Night Live
  - \*12:00 Western Theatre
- SUNDAY, MARCH 29:**
- \* 7:00 Muppets
  - \* 7:30 Ken Copeland
  - \* 8:30 This is the Life
  - \* 9:00 Dr. D. James Kennedy
  - \*10:00 Wild Kingdom
  - \*10:30 Agronsky and Company
  - \*11:00 MISSOURI FORUM
  - 11:30 Meet the Press
  - \*12:00 World Cup Skiing
  - \* 1:00 Wacky World of Sports
  - \* 2:00 Speed of Lightning
  - 2:30 Al Maguire's Championship Special
  - 3:30 NBC Sportsworld
  - \* 5:00 Championship Fishing
  - 6:00 Our House
- Sunday, March 29, Cont'd:**
- 7:00 Rags to Riches
  - 8:00 NBC Sunday Night Movie: "Independence"
  - \*10:00 NEWSCENTER 8
  - \*10:30 Lifestyles of the Rich and Famous
  - \*11:30 George Michael's Sports Machine
  - \*12:00 This Week in Country Music
- MONDAY, MARCH 30:**
- 5:30 NBC Nightly News
  - \* 6:00 NEWSCENTER 8
  - \* 6:30 Wheel of Fortune
  - 7:00 NBC Monday Night Movie: "Stone Fox"
  - 9:00 You Again?
  - \*10:00 NEWSCENTER 8
  - 10:30 The Tonight Show
  - 11:30 Late Night/David Letterman
- TUESDAY, MARCH 31:**
- 5:30 NBC NIGHTLY NEWS
  - \* 6:00 NEWSCENTER 8
  - \* 6:30 Wheel of Fortune
  - 7:00 Matlock
  - 8:00 Gimme A Break
  - 8:30 Easy Street
  - 9:00 Hill Street Blues
  - \*10:00 NEWSCENTER 8
  - 10:30 The Tonight Show
  - 11:30 Late Night/David Letterman
- WEDNESDAY, APRIL 1:**
- 5:30 NBC Nightly News
  - \* 6:00 NEWSCENTER 8
  - \* 6:30 Wheel of Fortune
  - 7:00 Highway to Heaven
  - 8:00 Night Court
  - 8:30 The Tortellis
  - 9:00 The Bronx Zoo
  - \*10:00 NEWSCENTER 8
  - 10:30 The Tonight Show
  - 11:30 Late Night/David Letterman
- THURSDAY, APRIL 2:**
- 5:30 NBC Nightly News
  - \* 6:00 NEWSCENTER 8
  - \* 6:30 Wheel of Fortune
  - 7:00 The Cosby Show
  - 7:30 Family Ties
  - 8:00 Cheers
  - 8:30 Nothing in Common
  - 9:00 L.A. Law
  - \*10:00 NEWSCENTER 8
  - 10:30 The Tonight Show
  - 11:30 Late Night/David Letterman

\*Locally Originated

© 1987 NBC Universal Inc. All rights reserved. This program is a service mark of NBC Universal Inc. All other marks are the property of their respective owners.

# CLASSIFIEDS

## FOR SALE

**5 ACRES STATE ROAD FRONTAGE** 8 mi. west of campus. 95% woods, 5% tillable, w/secluded southern exposure. No trailers. \$14,500, w/\$500 down. 449-5620 12-5 p.m. Mon.-Wed.; Thurs.-Sat. anytime.

**RANCH STYLE HOME** with country decor. New paint, carpet, vinyl. Finished walk-out basement with wood-burning stove, large deck, fruit trees, corner lot, fenced. \$59,500. 445-3085.

**CAMERA** Canon AE1 35 mm. 50mm lens, 85-210 zoom, flash, auto winder. Great condition. \$250. Call 445-1314 anytime.

**4000K EXTERNAL DRIVE** for Macintosh 128K or 512K. Excellent condition. \$125. 449-5504 10 a.m. to 10 p.m. every day.

## RENTALS

**THREE-BEDROOM** furnished house, air-conditioned, 10 minutes from campus. Rent negotiable. Available May 15 to Aug. 20 or part thereof. Call Naomi Ritter at 449-5886.

**SUBLEASE** new two-bedroom apartment, dishwasher, carpet, air-conditioning, pool, laundry facilities. Near University Hospital. 449-7739 or 443-2675 after 6 p.m.

**FACULTY HOUSE** for rent, academic 1987-88. Three bedrooms, nicely furnished, well insulated, in quiet neighborhood near schools and shopping, two miles from campus. \$465. Call 874-3583, evenings.

**LAKE OZARK CONDO** on waterfront on Horseshoe Bend for rent. Furnished, sleeps six, air, whirlpool, tennis, pool, boat docks. Reserve now for summer, \$350/week. 445-6556.

# JOBS

For more information on the following teaching and research positions, contact the appropriate individual listed below. All positions are contingent upon funding and enrollment.

**Biological sciences:** Postdoctoral research associate, deadline May 1. Contact Kathleen Newton, 882-4049.

**Entomology:** Postdoctoral fellow, deadline April 15. Contact G.M. Chippendale, 882-8346.

**Libraries:** Librarian I, II, III or IV—language and literature librarian, deadline May 15. Contact Pat Burbridge, 882-4701.

**Medicine:** Assistant professor-infectious diseases and associate professor-infectious

diseases, deadline July 30. Contact E. Dale Everett, 882-3107.

**Microbiology:** Research associate, deadline June 15. Contact Mark McIntosh, 882-4133.

**Pathology:** Research associate, deadline April 30. Contact Arlene Martin, 882-1121.

**Pharmacology:** Assistant professor, deadline June 30. Contact Hyun Kim, 882-7186.

Recorded listings of new campus and UM job openings are available 24 hours a day. For professional vacancies call 882-2345; for secretarial/clerical positions call 882-2041; and for technical/service/maintenance openings call 882-2916.

Anyone with UMCVMB CMS computer access may view campus and UM vacancies by logging on and entering command jobs. For more information or to apply for a job, contact Personnel Services, 201 S. Seventh St., west entrance, at 882-7976.

For information on job openings at University Hospital and Clinics, contact the hospital Personnel Department, 1W42 UMCHC, telephone 882-8186.

## This man might tell you to save your breath.



Meet Brent Mattox. Sort of a one-man environmental protection agency. Actually, he's an industrial hygienist in the University's Environmental Health and Safety office. Translated, that means Brent Mattox sees to it that our campus and the surrounding community are safe, hazard-free places to live and work.

Brent trains workers to remove asbestos safely. He even wrote a book on the subject, to

share his expertise. But gasses, noise, all types of pollution are Mattox-monitored too.

In his two years here, Brent's come to appreciate UMC's interest in its employees' well-being. Such as the responsible move that brought University policy up to federal-regulation standards. Brent's proud to be a part of that. Just as we're proud to have him on the Can-Do Crew. We can all breathe easier, knowing he's looking out for our health.

## BUSINESS SERVICES

882-7254

from the can do crew

## Reach 10,000 Mizzou Faculty and Staff

Rates: 30-word maximum \$3.

The Classified Advertising Section is open only to faculty and staff members.

A home phone number is required in all classified ads.

### Publication deadlines:

April 1 for April 10 issue

April 8 for April 17 issue

**Mizzou Classifieds:** Fill out the form and return it through campus mail with your check, payable to University of Missouri, to:

Mizzou Weekly  
1100 University Place  
Attn: Sherrill

Name \_\_\_\_\_

Department \_\_\_\_\_

Daytime Phone \_\_\_\_\_

Run my ad in the following issue of

Mizzou Weekly: \_\_\_\_\_

Category \_\_\_\_\_

Message \_\_\_\_\_

Home Phone: \_\_\_\_\_

BUY/SELL/TRADE — RENTALS  
— PERSONALS — CAR POOL —  
SERVICES — FREE — WANTED



# CALENDAR

Send calendar items in Campus Mail to Scott Wyman, Mizzou Weekly, 1100 University Place, by noon Friday the week before publication. Events are free and open to the public unless otherwise noted.

## Highlights

### BIG EIGHT GYMNASTICS

**CHAMPIONSHIP:** Event will be held at 7 p.m. March 27 in the Hearnes Bldg. Cost: \$3 faculty/staff, \$2 students.

**CONCERT SERIES:** The New York City Opera National Company will perform "Madama Butterfly" by Puccini at 8 p.m. March 30 in Jesse Aud. Cost: \$16 faculty/staff, \$15 students.

**UNIVERSITY CLUB:** State Sen. Roger Wilson will speak on "Legislation and Appropriations" at 7 p.m. April 2 in N214-215 Memorial Union. Cost: \$8. Reservations must be made by March 31. Call 882-6066.

## 27 Friday

**MEETING:** The 1987 annual meeting of the Missouri Archaeological Society will be held through March 29 at the Holiday Inn Executive Center, 2200 I-70 Drive SW. Cost: \$5. For information call 882-3544.

**CONTINUING LEGAL EDUCATION:** "Problems and Pitfalls of Lawyer Trust Accounting" will be presented at the Vista International Hotel, 200 W. 12th St., Kansas City. Cost: \$55. Call 882-7251.

**CONTINUING LEGAL EDUCATION:** "MAI-CR 3d-New and Revised Instructions" will be presented at the Holiday Inn, Sports Complex, I-70 at the Blue Ridge Cut-off, Kansas City. Cost: \$85. Call (816) 276-1648.

**SEMINAR:** A training session on monitoring crops for weeds, insects and diseases will be held today and tomorrow from 8:30 a.m. to 5 p.m. in N208 Memorial Union. For information call 882-3256.

**MISSOURI MANAGEMENT SERIES:** "Leadership" will be presented by James Wall, professor of management, at the Park Inn in Jefferson City. Cost: \$98. To register call 882-4803.

**MID-AMERICA TEACHERS OF ENGLISH TO SPEAKERS OF OTHER LANGUAGES:** Group will meet at the Memorial Union. Cost: \$26 to \$31. Call 882-8253.

**ALUMNI SEMINAR WEEKEND:** "Communication: the Minds, the Media and the Messages" will be presented through March 29. Cost: \$95, which includes four meals, programs and campus transportation. For reservations call 882-6611.

**EXHIBITION:** Leon Snyder, associate professor of horticulture, will exhibit some of his landscape designs in "Landscape Design Graphics" from 8:30-11:30 a.m. and 1:30-4:30 p.m. in Rogers Gallery, 142 Stanley Hall.

**MISSOURI INSTITUTE OF PSYCHIATRY:** George Grossberg will speak on "Overview of Recent Research on Alzheimer's Disease" from 1-3 p.m. at the St. Louis State Hospital Complex, Kohler Bldg. Aud., 5400 Arsenal St., St. Louis.

**LECTURE:** William Bass, chair of the anthropology department at the University of Tennessee, will speak on "Forensic Field Investigation" at 3:40 p.m. in I Arts and Science Bldg.

**CPPC:** "Your Job Interviews: Are You Ready?" will be presented from 3:45-5 p.m. at the Career Planning and Placement Center, 220 Noyes Hall.

**BLACK CULTURE CENTER:** "Soul Video" will be presented at 6 p.m. at the Black Culture Center, 823 Virginia Ave.

**BIG EIGHT GYMNASTICS CHAMPIONSHIP:** See Highlights.  
**MSA FILM:** "A Room With A View," rated PG-13, will be shown at 7 and 9:30 p.m. in Ellis Aud. Cost: \$2.

**MANIC DEPRESSIVE ASSOCIATION OF ST. LOUIS:** Audrey Hammann, pianist, will perform "The Music of Robert Schumann: A Known Manic Depressive" at 7:30 p.m. in the King Louis IX Room Section A,

Omni International Hotel, St. Louis Union Station. Cost: \$7.50 at the door.

**OPERA PREVIEW:** Michael Budds, musicologist, will preview the March 30 performance of Puccini's "Madama Butterfly" at 7:30 p.m. in N201-202 Memorial Union. Cost: \$5.

**ASTRONOMICAL FILM SERIES:** "Project Universe" will be shown at 7 p.m. in 114 Physics Bldg.

**SEE THE STARS:** Weather permitting, the Laws Observatory on the roof of the Physics Bldg. will be open from 8-10 p.m.

## 28 Saturday

**SEMINAR:** "Farming Choices: Alternatives for Missouri Agriculture" will be presented in the Hearnes Center. Cost: \$5 at 8:30 a.m. registration.

**WOMEN'S CENTER:** Laura Hacquard, Women's Center coordinator, and Karen Fitzgerald, groups and counseling intern at the center and a doctoral candidate in counseling psychology, will present "Assertion Training for Trainers" from 9 a.m.-4 p.m. in the Women's Center, 1 Gentry Hall. Call 882-6549 to register.

**BASEBALL:** Team will play Kansas at noon at Simmons Field. Cost: \$2 faculty/staff, \$1 students.

**RECITAL:** Paul Thorpe will perform on the tuba at 4 p.m. in the Fine Arts Recital Hall.

**MSA FILM:** "A Room With A View," rated PG-13, will be shown at 7 and 9:30 p.m. in Jesse Aud. Cost: \$2.

**RECITAL:** Minor Garrett, trombonist, will perform at 8 p.m. in the Fine Arts Recital Hall.

## 29 Sunday

**PENNEY-MISSOURI NEWSPAPER WORKSHOP:** Workshop will be held from 8:30 a.m.-5 p.m. through April 3 at the Days Inn, 1900 I-70 Drive S.W. Call 882-7771.

**STAFF RECOGNITION WEEK STAFF ART COMPETITION:** Entries will be displayed through April 10 in the Brady Commons Gallery.

**BASEBALL:** Team will play Kansas at 12:30 p.m. at Simmons Field. Cost: \$2 faculty/staff, \$1 students.

**RECITAL:** Kathy Bhat, soprano, will perform at 7 p.m. in the Fine Arts Recital Hall.

**MSA FILM:** "It Happened One Night," not rated, will be shown at 8 p.m. in Memorial Union Aud. Cost: 50 cents.

**RECITAL:** Amy Benne, soprano, will perform at 8:30 p.m. in the Fine Arts Recital Hall.

## 30 Monday

**WOMEN'S CENTER:** Nanette Laughrey, associate professor of law, will present "Women Under Missouri Law" at noon in the Women's Center, 1 Gentry Hall.

**CAMPUS COMPUTING SHORT COURSE:** "Introduction to Wordperfect" will be held from 2:40-4:30 p.m. through April 3 in 106 Lefevre Hall. To enroll call 882-2112.

**BIOCHEMISTRY SEMINAR SERIES:** Gordon G. Hammes of the Chemistry Department at Cornell University will present "Structure and Function of a Membrane Bound Enzyme: Chloroplast Coupling Factor" at 3:40 p.m. in 322 Chemistry Bldg. Refreshments will be served at 3:30 p.m.

**CRAFT STUDIO:** Basic photography classes will be held from 6:30-9 p.m. Mondays through April 20 in 203 Brady Commons. Basketry classes will be held from 6:30-9 p.m. Mondays through April 20 in 203 Brady Commons. Pot throwing classes will be held from 6:30-9 p.m. Mondays through April 20 in 203 Brady Commons. Call 882-2889.

**RECITAL:** Jane Swanson, percussionist, will

perform at 7 p.m. in the Fine Arts Recital Hall.

**CONCERT SERIES:** See Highlights.

## 31 Tuesday

**CATALOG ENTRIES:** Application forms are due today to be considered for the second "Best of Missouri's Hands" catalog. For more information contact a county extension center or write Edie Pigg, project coordinator, at 628 Clark Hall.

**SCHOOL OF NURSING CONTINUING EDUCATION PROGRAM:** Ann Kellett, law student and Jefferson City law firm clerk, will present "Current Legal Issues in Gerontology" from 8:30 a.m.-4:30 p.m. at Southeast Missouri State University in Cape Girardeau. For cost call 882-0216.

**BASEBALL:** Team will play Northwest Missouri State University at 1:30 p.m. at Simmons Field. Cost: \$2 faculty/staff, \$1 students.

**WATER RESOURCES SEMINAR:** John Karel, former director of Missouri State Parks, will present "Water Quality Protection for Missouri Streams" at 3:40 p.m. in 2047 Engineering Bldg.

**CRAFT STUDIO:** Intermediate photography classes will be held from 6:30-9 p.m. Tuesdays through April 21 in 203 Brady Commons. Cartooning classes will be held from 6:30-9 p.m. Tuesdays through April 21 in 203 Brady Commons. Call 882-2889.

**WOMEN'S CENTER:** Joyce Schulte, pain and stress specialist, will present "Grief and the College Student" at 7 p.m. in the Women's Center, 1 Gentry Hall.

**MSA FILM:** "On The Waterfront," not rated, will be shown at 8 p.m. in Memorial Union Aud. Cost: \$1.

## APRIL 1 Wednesday

**SYMPOSIUM ON PLANT BIOCHEMISTRY AND PHYSIOLOGY:** Event will begin at noon and continue through April 3 at the Memorial Union. Cost: \$30, not including meals. Call 882-8253.

**WOMEN'S CENTER:** Michael Johnson, doctoral candidate in counseling psychology, will present "Humor and Gender" at noon in the Women's Center, 1 Gentry Hall.

**MIDDAY GALLERY EVENT:** The Missouri Arts Quintet will perform at 12:25 p.m. in Pickard Hall.

**PSYCHIATRY COLLOQUIUM:** Lisa Renner, audiologist at the University Hospital and Clinics, will present "Central Auditory Processing Disorders in Children" at 1 p.m. in the Truman Veterans Hospital Aud.

**WOMEN'S SOFTBALL:** Team will play William Woods College at 2 p.m. at University Field.

**OPEN OFFICE HOURS:** Provost Lois DeFleur will hold open office hours from 3-5 p.m. in 114 Jesse Hall for one-on-one discussions with faculty, staff and students.

**CPPC:** "Choice or Chance? Deciding Your Academic Major and Career" will be held from 3:45-5 p.m. at the Career Planning and Placement Center, 220 Noyes Hall.

**BLACK CULTURE CENTER:** "Black Male Relationships" will be presented at 6 p.m. at the Black Culture Center, 823 Virginia Ave.

**CRAFT STUDIO:** Classes in weaving, sumie and stained glass will be held from 6:30-9 p.m. Wednesdays through May 1 in 203 Brady Commons. Call 882-2889.

**MSA FILM:** "Whatever Happened to Baby Jane?" not rated, will be shown at 8 p.m. in Ellis Aud. Cost: \$1.

**MSA SPECIAL EVENT:** Hypnotist Tom DeLuca will perform at 8 p.m. in Jesse Aud. For cost call 882-8386.

**RECITAL:** Jie Li Gu, violinist, will perform at 8:30 p.m. in the Fine Arts Recital Hall.

## 2 Thursday

**EMPLOYEE DEVELOPMENT SEMINAR:** "Effective Planning" will be presented by Lonnie Echternacht, associate professor of practical arts and vocational-technical education, from 10 a.m.-3 p.m. in the Education and Development Center of the Heinkel Bldg. To register call 882-4859.

**LECTURE:** Anne Hirshfield of the anatomy department at the University of Maryland will present "Kinetic Aspects of Follicular Development in the Rat" at 10:40 a.m. in 103 Animal Sciences Center.

**WOMEN'S CENTER:** Luci Lee, doctoral candidate in counseling psychology, will

present "Sexual Harrassment" at noon in the Women's Center, 1 Gentry Hall.  
**CPPC:** "See Yourself As Others See You," practice job interviews, will be held at 1:40, 2:40 and 3:40 p.m. at the Career Planning and Placement Center, 110 Noyes Hall.  
**FACULTY COUNCIL:** Group will meet at 3:40 p.m. in S110 Memorial Union.

**FRED MCKINNEY PSYCHOLOGY LECTURE:** Michael Posner, professor of neuropsychology and psychology at Washington University, will present "Mechanisms of Thoughts and Images" at 3:40 p.m. in Ellis Aud.

**MARION S. DEWESE VISITING LECTURESHIP:** Lewis Flint, professor and chair of surgery at State University of New York, will present "Why Study Shock?" at 4 p.m. in MA215 Health Sciences Center.

**HONORS THREE CULTURES LECTURE:** Richard Hocks and Howard Fulweiler, professors of English, will present "The Evolution of Consciousness: A Humanistic Perspective" at 4 p.m. in S8 Memorial Union.

**CPPC:** "Orientation to Career Planning and Placement Center Services" will be held from 4-5 p.m. in 110 Noyes Hall.

**BLACK CULTURE CENTER:** "Black Female Relationships" will be presented at 6 p.m. at the Black Culture Center, 823 Virginia Ave.

**CRAFT STUDIO:** Classes in pot throwing and calligraphy will be held from 6:30-9 p.m. Thursdays through May 2 in 203 Brady Commons. Call 882-2889.

**UNIVERSITY CLUB:** See Highlights.

**RECITAL:** "An Evening with Wilhelmina Fernandez" will be presented at 8 p.m. in the Fine Arts Recital Hall. Cost: \$7 faculty/staff, \$5 students. Call 882-3781.

## 3 Friday

**NATIONAL ORIENTATION DIRECTORS ASSOCIATION:** "Region Four Drive-In Conference" will be held today on campus. Cost: \$16 for NODA members, \$13 for student members, \$26 for non-member professionals, \$18 for non-member students. Deadline is March 27. Call 882-3621.

**CONTINUING LEGAL EDUCATION:** "MAI-CR 3d-New and Revised Instructions" will be presented at the Sheraton Inn, 3333 S. Glenstone, Springfield, Mo. Cost: \$85. Call 882-7251.

**CONTINUING LEGAL EDUCATION:** "Problems and Pitfalls of Lawyer Trust Accounting" will be presented at the Sheraton Inn, 3333 S. Glenstone, Springfield, Mo. Cost: \$55. Call 882-7251.

**MISSOURI MANAGEMENT SERIES:** "Leadership" will be presented by James Wall, professor of management, at the Alumni Center. Cost: \$98. To register call 882-4803.

**MARGARET MANGEL LECTURE:** Letty Cottin Pogrebin, editor of Ms. Magazine, will present "The Impact of Public Policies on Families" at 9 a.m. at the Ramada Inn, 1100 Vandiver Drive.

**EMPLOYEE DEVELOPMENT SEMINAR:** "Problem Solving" will be presented by Allen Bluedorn, associate professor of management, from 10 a.m.-3 p.m. at the Education and Development Center in the Heinkel Bldg. To register call 882-4859.

**WOMEN'S HEALTH DAY:** "Stress and the Professional Woman" will be presented at 11:30 a.m. in S3 Memorial Union.

"Osteoporosis" will be presented at the same time in S4 Memorial Union. "Breast Self-Examination" will be presented at 12:30 p.m. in S3 Memorial Union. "Tips on Diet and Exercise" will be presented at the same time in S4 Memorial Union. From 11 a.m.-2 p.m., a free health screening will be conducted in S8 Memorial Union. Event is sponsored by University Hospital and Clinics.

**MASTER CLASS SERIES:** The Beaux Arts Trio with Walter Trampler, violist, will lead the class at 2:40 p.m. in the Fine Arts Recital Hall.

**CONCERT SERIES:** The Beaux Arts Trio will perform at 8 p.m. in Jesse Aud. Cost: \$12 faculty/staff, \$11 students.

**MSA FILM:** "Top Gun," rated PG, will be shown at 7 and 9:30 p.m. in Ellis Aud. Cost: \$2.

**ASTRONOMICAL FILM SERIES:** "Project Universe" will be shown at 7 p.m. in 114 Physics Bldg.

**SEE THE STARS:** Weather permitting, the Laws Observatory on the roof of the Physics Bldg. will be open from 8-10 p.m.

**MSA FILM:** "True Stories," rated PG, will be shown at midnight in Ellis Aud. Cost: \$1.50.

University Libraries  
University of Missouri

### Digitization Information Page

Local identifier                      MizzouWeekly(print)

### Source information

Format                                      Newspaper  
Content type                              Text with images  
Source ID                                  Duplicate copies University Archives weeded out  
Notes

### Capture information

Date captured                              July-December, 2022  
Scanner manufacturer                      Plustek OpticBook  
Scanner model                              A300 Plus  
Scanning system software                      Book Pavilion  
Optical resolution                              600 dpi  
Color settings                              8 bit grayscale for majority of pages;  
    24 bit color for color illustrations/portraits/photographs  
File types                                      tiff  
Notes

### Derivatives - Access copy

Compression                              Tiff: LZW compression  
Editing software                              Adobe Photoshop 2022  
Resolution                                      600 dpi  
Color    same as captured  
File types                                      pdf created from tiffs  
Notes    Images cropped, straightened, and brightened.