

MIZZOU WEEKLY

University of Missouri-Columbia

April 3, 1987

Spring forward
to daylight-
saving time
April 5.



Celebrate contributions of loyal staff members

Take time to experience 'Mizzou Showcase' during Staff Recognition Week.

The spotlight is on staff members during the eighth annual Staff Recognition Week, April 6 through 10. The week recognizes staff members' dedication to the University with the theme "Mizzou Showcase."

All staff are encouraged to attend the free noontime programs, tour campus buildings or view the art and photography show. A complete program schedule appears on Page 8.

The highlight of the week will be a 2 p.m. ceremony April 10 in Jesse Auditorium honoring winners of the four \$750 Staff Recognition Awards, and service-award recipients. All faculty, staff and students are invited to attend. A reception honoring the winners will follow the ceremony in the Jesse Hall lobby.

Service-award recipients should be at their designated area in Jesse Hall no later than 1:30 p.m. the day of the ceremony. Five-year recipients will meet on the second floor outside the Graduate School. Ten-year honorees will gather on the third floor outside the elevator. The 15-year group will meet outside the provost's office on the first floor. Those being recognized for 20 or more years should gather in the basement.

Award winners are featured on Pages 6 and 7. A list of 1987 service-award recipients and 1986 retirees begins here.

40 YEARS

Roger Spencer Conklin, *Chemistry*
Rutus Leon Morris, *Campus Facilities*
Mary Shirley Thorp, *Entomology*

35 YEARS

Amos Crump, *Campus Facilities*
Alfred Lee Harty, *Forestry, Fisheries and Wildlife*

30 YEARS

Roger H. Allbee Jr., *TV Station*
Robert Joe Brockman, *TV Station*
Diane Brukardt, *Student Health Services*
Evelyn Joyce Calvin, *Ophthalmology Clinic*
Mary Margaret Estes, *Residential Life*
Veva Morrow Hein, *Library*
Marilyn Marshall, *Human Nutrition, Foods, and Food*

Please turn to Page 5.

Imparting minority viewpoints

Program illustrates to media managers that multicultural staff is asset rather than liability.

"Art" is often controversial, but one Long Beach, Calif., newspaper editor didn't imagine that a photo of a sand sculpture would cause an uproar. It was a caricature of an Asian with slanting eyes, buck teeth and a long, flowing beard. Asian residents of Long Beach were outraged.

Ben Johnson, director of the Multicultural Management Program at Mizzou, says the editor should have known better. Through the MMP, Johnson hopes to impart more sensitivity to mid-career media-management personnel. The program is an intensive four-week session designed to train media managers to understand the impact of their editorial decisions on minorities. It shows media managers that a news staff with varied life experiences is an asset rather than a liability.

"America is a melting-pot with lots of chunks that haven't completely melted yet," Johnson says. "But that's good; each of us should keep something of ourselves." In the newsroom, he says, those differences translate into understanding and sensitivity.

The goals of the program are two-fold. First, more minorities need to be trained for managerial positions so they can help make decisions about what is news. Secondly, white managerial, middle-age, middle-class males, who dominate the newsroom, need to understand the devastating effect negative reporting can have on a community.

Currently the media do not reflect society

as it exists, Johnson says. Only eight of the 58 newspapers in Missouri have minorities on their staff. Most of those eight organizations are in St. Louis or Kansas City. In out-state Missouri, "the number of newspapers hiring minorities falls off precipitously," he says.

Missouri doesn't stand alone. Blacks make up less than 1 percent of media management, though they represent 22 percent to 30 percent of the population. Any other business with such a record would be front-page news, Johnson says. "How can you even say you cover a community well when the minority newsroom staff doesn't come close to the percentage of minorities in the population?"

The riot-torn '60s illustrate the problem, Johnson says. The explosion in the black community took America by surprise because the media didn't let the public know the ghettos were smoldering. When the riots broke out, the networks put microphones in the hands of former janitors and secretaries and sent them to cover the upheaval. It was too little, too late, he says.

Johnson says the American culture is unique because it has fused into one people, yet each group has maintained its own distinct culture. The MMP program is designed to teach journalists that those differences are not a handicap.

A brainstorming session between Bob Knight, professor of news-editorial, and Pam Johnson, publisher of the Ithaca (N.Y.) Journal, planted the seed for the MMP program. Johnson is the only black, female publisher in the country.

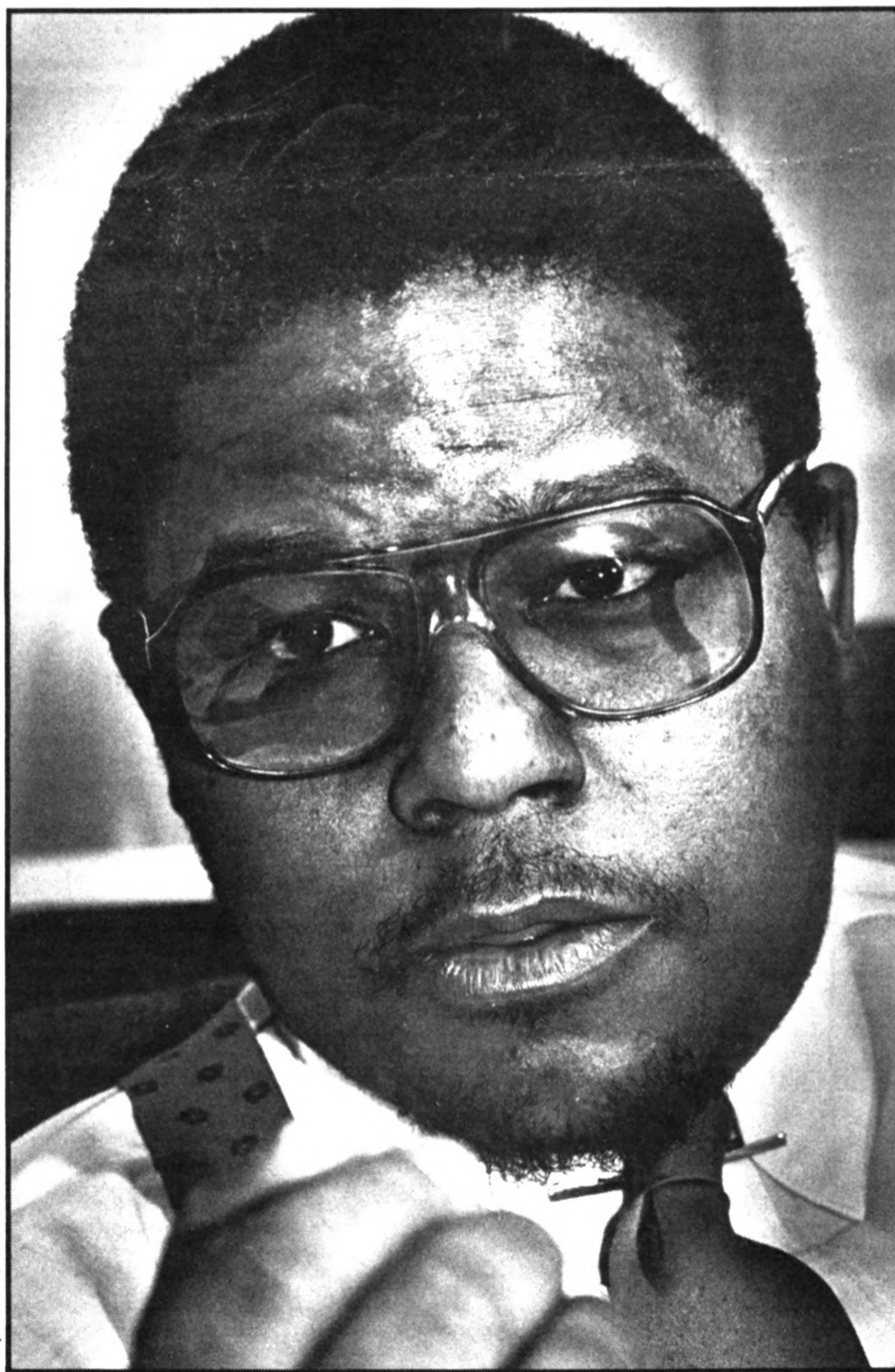
The MMP was three years in the making and the first session began Sept. 7, 1986.

Ben Johnson, who is on leave from the Detroit Free Press, says the program has received an excellent response so far. He hopes to offer two sessions this year. Enrollment is limited to 17 participants per session.

Although he's proud of the progress the program has made, much work remains to be done. "There are thousands of newspapers with no minorities at all, and they don't want any. That's where the battle lies."

—Mildred Robertson

Ben Johnson directs Mizzou's Multicultural Management Program, which helps managers understand the impact of editorial decisions on minorities.



Larry Boehm photo

SEMINARS SET

"Assertiveness/Your Perfect Right" is the topic of an April 7 employee development seminar. Jeanne Nolan, assistant program director in extension, will lead the program for office staff from 9 a.m. to noon.

A 9 a.m. to 4 p.m. April 9 seminar for management/professional staff will cover "Managing the Troubled Employee." Instructors are Jim Irvin, director of Counseling Services, and Betty Hosokawa, program director of the Employee Assistance Program.

The free seminars will be held in the Education and Development Center in the Heinkel Building. To register call 882-4859.

HAVE LUNCH WITH A TIGER

Faculty are invited to three spring athletic team luncheons at the Dutton Brookfield Facility on the corner of Providence Road and Stadium Boulevard.

Winter and spring sport coaches will give short presentations on their seasons. Some players will attend, too.

Men's basketball will be featured April 7. Women's sports will be the focus April 15, and men's sports April 21.

All luncheons are at noon and cost \$3. Call 882-2076 for reservations.



EDUCATION GETS HIGH MARKS

The University met all 476 standards when a team from the National Council for Accreditation of Teacher Education visited campus in March. The team's final report is due this month.

NCATE evaluates teacher education in six areas: governance of programs; curricula; faculty; students; resources and facilities; and evaluation, program review and planning.

"I think the University should...be very proud," says Frederick R. Cyphert, chair of the NCATE team. "This committee feels good to have found this out because we aren't particularly kind to people. We try to be honest."

WRITERS PRESENT ANNUAL READING

"Poetry and Fiction," a graduate reading series, is being presented by the English Department this month.

The free annual event features students reading selections from their own work. Fiction-writers Adam Davis and Dave Dobson, and poet Jonathan Bracker will read at 7 p.m. April 8 in S16 Memorial Union.

Kathie McCoy, Randy McCleary and Rodney Tullis will read poetry, and Matt Weimer will read fiction at 8 p.m. April 22 in S7 Memorial Union.

Staff hear report on annuities programs

Tax-deferred annuities were the topic of the March 26 Staff Advisory Council meeting. Mary Ann Tipton, manager of UM Employee Benefits, and Retha Nichols, staff benefits specialist, presented the latest information on the plan.

"The tax-deferred annuity plan is a contemporary benefit program providing choice and flexibility," Tipton said. "There are only a few restrictions. The employee decides if he or she wants to participate, when he or she wants to start and

stop, and at what level to participate."

Tipton said interest in the TDA plan has increased tremendously since the introduction of last year's tax reform act. "IRAs are a lot less attractive this year for many employees with higher salaries. Except for certain circumstances, IRAs are no longer fully deductible if you're covered by an employer's retirement plan," she said. The new tax law also reduces the maximum annual contribution to a TDA from \$30,000 to \$9,500.

A TDA shelters income from taxes. That money is invested into either fixed or variable accounts or a combination of the two and is withdrawn at a later time. Tax is paid on that money when it is withdrawn at retirement, usually when investors are in a lower tax bracket.

A fixed account, the more stable alternative, has a guaranteed return and is generally recommended for anyone close to retirement. The high-risk variable account doesn't have a guaranteed return. Younger investors with more time to accumulate income in their TDAs may prefer a variable

account.

Employees can defer or direct a minimum of \$25 a month to one or more of 27 insurance and investment companies. The Internal Revenue Service mandates that participants can change the amount deferred only once in a calendar year. Employees interested in the plan must sign a salary reduction agreement with the University stating that they volunteered to defer part of their salary to one of the programs. The employee is responsible for choosing the program and signing an agreement with that company.

"There is a lot of choice, but there is also a lot of responsibility in this plan," Tipton said. "We offer many good companies, but the University won't make a judgment on which is best. You are responsible for deciding which one best suits your needs."

The plan has no affect on the amount of University retirement benefits an employee will receive. It is open to all University employees, including those working part time.

For more information on the program,

call the Employee Benefits office at 882-2146. The office also can figure the maximum amount that an employee can contribute to the program.

In other business, council member Barbara Olson Smith, co-chair of the staff benefits and development committee, announced that more than half of the benefit surveys sent to Big Eight and Big Ten schools have been returned. The committee will use the surveys in its effort to expand certain employee benefits. Staff Council is working with Faculty Council and staff council representatives from the St. Louis and Kansas City campuses on the project. The Rolla campus is not represented because it does not have a staff council.

Council member Linda Holsinger, communications chair for Staff Recognition Week events, said plans were going smoothly. At meeting time, 37 entries for the art and photography show had been received.

The council's next meeting is 1:15 p.m. April 9 in S206 Memorial Union. All staff members are invited.

Personal touch for Voice Mail

Using Voice Mail, you can greet callers with your own friendly voice even if you're out of the office. Here's how.

Dial 55 to access your Voice Mailbox. When the Voice Mail recording requests it, enter your personal ID number. If you have no messages, Voice Mail will say, "To send a message dial the address of the person you are calling." At this point dial 071. The recording will prompt you to "Please dial 1 to record your greeting. Dial 5 to end your greeting." Be sure to tell callers to leave a message after the tone.

If you have new or saved messages, dial the asterisk (*) when the recording prompts you to "Dial star to use other features." You will be routed to the cycle where you can dial 071 and record your greeting.

After recording your greeting, dial the asterisk again to leave your Voice Mailbox.



Vol. 8 No. 25

A publication of the University of Missouri-Columbia faculty and staff, published every Friday during the academic year and twice a month during the summer by Publications and Alumni Communication, a department of Development, University and Alumni Relations Division, 1100 University Place, 882-7357. News deadline is noon Friday the week before publication. Annual subscriptions are available to retirees for \$10. Faculty Council and Staff Council communication committee members: Donald Anderson, Bob Derryberry, Gary Fields, Linda Holsinger, Gordon Kimber, C. Kirk Leeper, Mary Miller, Barbara Olson Smith and Donna Turner.

Editor: Karen Worley
Assistant editor: Carol Hunter
Staff writer: Mary Vermillion
Advertising coordinator: Sherrill Harsh
Graphic editor: Larry Boehm

From our staff to yours,
specials all week long
in honor of
Staff Recognition Week.

Specials good April 6th-10th

the Bengal: A 16-oz. soda for 5 cents with the purchase of any deli sandwich.

Hawthorn Room: Breast of chicken with champagne sauce, vegetable, salad and roll for \$3.50.

Union Cafe: Daily soup and salad specials.

Brady's Grill: Taco salad and 12-oz. soda for \$1.50.

Campus Snack Bars: Daily specials.

Campus Dining Services

ALL ROADS LEAD TO ROME

John Roberts, professor of English, is leading a study seminar in Rome for faculty, staff and students from May 18 through June 2.

Participants will tour ancient churches, ruins and archaeological treasures such as the Pantheon, the Forum and the Colosseum. Academic credit is optional.

Cost is \$1,669 based on double occupancy. It includes roundtrip airfare from St. Louis to Rome. Final payment is due April 15.

For more information call Roberts at 882-3235 or 445-6440.

WHAT'S ON TAP FOR APRIL 8?

Classes may be dismissed from 9:15 to 10:15 a.m. April 8 so that faculty and students can participate in Tap Day.

During the annual ceremony on Francis Quadrangle, new members of Mortar Board, QEBH, Mystical Seven, LSV and Omicron Delta Kappa will be initiated. In case of inclement weather, the ceremony will be held in Jesse Auditorium.

FORECAST GOOD FOR INSTITUTE

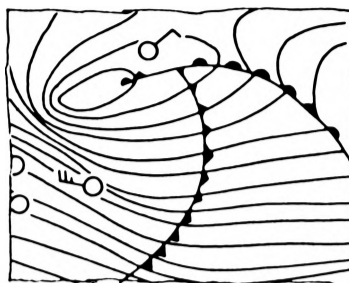
The Cooperative Institute for Applied Meteorology has received sunny news. A \$500,000 grant from the Agency for International Development will keep the institute in Columbia.

The institute, a joint effort between Mizzou's Atmospheric Science Department and the National Oceanic and Atmospheric Administration, analyzes satellite photo images to assess world weather conditions. Earlier this year, the NOAA considered withdrawing from the institute.

Now that the NOAA will remain, "Academic programs will be enhanced," says Wayne Decker, professor and chair of atmospheric

science. NOAA personnel to be retained under the grant teach in Mizzou's Atmospheric Science and Geography departments.

The grant will go directly to NOAA. The award, which will support the total program, will pay the salaries of four UM personnel and four NOAA personnel.



CONCERT FEATURES DANCE VARIETY

Everything from ballet to tap will be included in a concert by the UMC Dancers April 10 and 11. Both performances will be at 8 p.m. in Jesse Auditorium.

The group will perform modern dances called "Kaleidoscope" and "Phoenix." It also will perform a ballet to music by Erik Satie, and a show jazz collection called "Dancing Thru the Years." Tap and jazz dances to the big band sound also will be featured.

Tickets are \$4 and can be purchased from April 6 to 10 at McKee Gym or at the door before the performance. For information call 882-6353.

Faculty Council gives reports

Reports were plentiful at the March 26 Faculty Council meeting, with topics ranging from student assessment to parking. Here are highlights:

- Council Chair John Bauman, professor of chemistry, reported that William Turnbull and Nancy Beck of Educational Testing Service will be on campus April 15 to meet with faculty and students regarding assessment. Mizzou will participate in a pilot ETS test next year.

- Tom Freeman, professor of geology, told fellow council members that some surface parking lots might close when the parking garages open. Freeman heard the proposal at a March 2 joint meeting of the parking and planning committees, which was open to faculty and staff. (See March 6 Mizzou Weekly, Page 1.)

- Keith Schrader, professor of mathematics, said the proposal should be shelved "until we see how the parking garages work." He said a petition on parking issues is circulating in his building, Mathematical Sciences. Schrader plans to bring the petition to the council's April 16 meeting.

The campus parking and transportation committee will continue discussion of the lot-closing proposal at its April 16 meeting.

- The student affairs committee an-

nounced a public hearing on guidelines for use of facilities to be held from 3:40-5 p.m. April 23 in Waters Auditorium. Current guidelines designate certain areas for campus protests. The student affairs committee will manage the hearing and Bauman will lead the session. More details will be announced.

Council members also reviewed questions and answers related to South Africa. The document, prepared by the UM president's office, has been distributed to the Board of Curators. "The main purpose is to keep ourselves educated on this issue," Bauman said.

- Agronomy Professor Gordon Kimber, chair of the communications committee, asked faculty for ideas and articles for the Faculty Forum newsletter.

- Rough sketches of a proposed alumni center are expected by May, said Al Hahn, professor of veterinary medicine and surgery and chair of the special projects committee. The new center would be located in the heart of campus. (See March 13 Mizzou Weekly, Page 1.)

- The fiscal affairs committee planned to review proposed program improvements with the provost and interim chancellor, reported committee Chair Freeman. Regarding capital requests, phase II of the library expansion and an engineering laboratory addition have high priority, he said.

- Freeman also reported on the March 12 Intercampus Faculty Council meeting. The group discussed the faculty leave policy, minority recruitment and retention, and retirement benefit calculations.

one has a concern about a particular building, I encourage them to call us," Beckett says. That number is 882-7018.

Q. How long will it take for the 900-car parking garage on University Avenue to clear at 5 p.m.? How many exits are there? How will the traffic be handled?

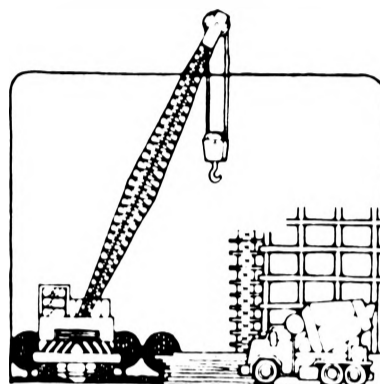
A. Jim Joy, director of Parking and Transportation Services, says he is not expecting a traffic problem as cars exit from the garage. "Not everyone exits at 5 p.m. Some employees' shifts are over at 3 or 3:30 p.m. and many are gone at 4 p.m. We don't anticipate 900 cars leaving the garage at the same time," he says. There will be two exits from the garage. The main exit is on University Avenue. The second, in the north-west corner of the garage, will empty to a surface parking lot and then on to Paquin Street.

Joy says there will be no increase in cars reaching intersections in the area. He says the traffic will be monitored and adjustments will be made if needed.

"Once everyone learns how to use the garage, it will decrease the time it takes for people to come in and out," he says. The garages are scheduled to open sometime in June. Employees who were relocated to another parking lot during the construction will be assigned to the garages as soon as they open. Others will be assigned to the structures throughout the summer.

Q. Why are there Ohio license plates on the University food-service vehicles?

A. "Those are leased corporation vehicles licensed in Ohio and leased to Marriott Corp. The University is in the process of purchasing the vehicles," says Jim Joy, director of Parking and Transportation Services. "When the purchase is complete, the vehicles will be issued official University license plates."



Spaces reserved for picking up and dropping off children at the Child Development Laboratory (CDL) in WC-5 are restricted from 7 a.m. to 6 p.m. Monday through Friday. Only vehicles with CDL permits are authorized to use this area.

The next parking policy committee meeting will be at 3 p.m. April 16 in S8 Memorial Union.

Parking & Transportation Services
107 Swallow Hall
882-4568



Q. We understand that the Writing Lab was recently moved because of "radioactive clay" that had been stored in the basement of its building on Watson Place. How was this toxic storage overlooked, what effect might it have had on the occupants all these years, and have all other University buildings been checked?

A. The Geology Department had stored some clay samples in the basement of the building, located at 304 Watson Place, but, according to Jim Beckett, director of Environmental Health and Safety, there was no radioactivity in the clay and the occupants were not exposed to any short- or long-term health hazards.

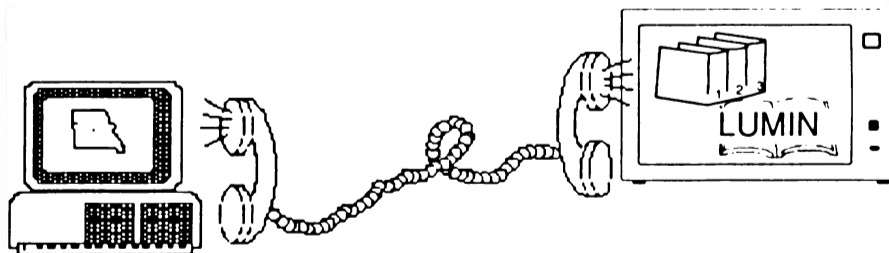
Beckett's department did respond to a call complaining about a bad odor in the basement of the building. "A sewer line had backed up. It's an old building and water had seeped in over the years. That added to the smell," he says. "There were aesthetic problems, but no health problems." Other buildings in the area were checked at that time. The Writing Lab had been scheduled to move for more than a year. The lab is now located in the General Classroom Building.

Environmental Health and Safety works with departments that use hazardous materials in research projects to ensure appropriate safety measures are taken. "If some-

==> Let's Compute!_

Finding books in the library can be as easy as pressing a few buttons. All you need to do is take advantage of ProComm.

Acquired by the University as a site-licensed program, ProComm is a communications package for accessing the campus mainframe computers. You can obtain a copy for use by bringing a blank diskette to the Computing Services Help Desk in 107 Lefevre Hall or 8 Middlebush.



With ProComm, an IBM PC and a modem, accessing LUMIN is just a matter of selecting a command file. The rest of the work is done for you. The next step is to search for your books.

For more information on ProComm contact the Help Desk in 107 Lefevre Hall, 882-5000.

For information on LUMIN contact the General Reference Desk in Ellis Library, 882-4581, or the Health Sciences Library, 882-6141.

FORUM

Caring might avert crisis

By Betty Hosokawa

At various points in our lives each of us will be faced with a dilemma resulting from concern for the well-being of another person. That individual may be a family member, friend, co-worker or employee. The dilemma arises from our intuitive sense that the person's situation is deteriorating rapidly, the individual is giving off signals of hopelessness regarding correcting the situation, and the potential for a life-threatening event is increasing. We wonder:

- Should talk of self-destructive behavior be taken seriously or is it simply a way of letting off steam or getting attention?
- Is the individual really in as much danger of harming himself or herself as it sounds to me?
- Will the person become angry and punish or reject me if I bring up my concerns with him or her?
- Can the person accuse me of invasion of privacy if I intercede somehow?
- What if I try to offer help and my effort is unsuccessful?
- Will my confrontation of the person precipitate that individual into hurting himself or herself?

Employee Assistance Program staff often discuss these questions with Mizzou employees. Because they are universal concerns, it is useful to discuss them here with a broader audience.

All talk of life being hopeless, not worth living, or of ending it all should be taken seriously. At a minimum, the individual is

telling you about the depth of emotional pain he or she is experiencing. Express your concern about what you think you are hearing to the individual. Asking someone if they are considering suicide will not precipitate the act. Your concern does let the person know you are aware of how much pain he or she is feeling. The act of asking and listening may help an individual who has felt cutoff and alone start to use resources. A situation should be considered as needing more rapid intervention if an individual is considering suicide, has a well-thought-out plan and the means to carry it out.

Many individuals who are feeling overwhelmed lack the emotional and physical energy to locate a resource for help, to make an appointment and to arrange to get there. You can help by making the arrangements and getting the person to the resource.

Share your concerns about the individual with others more directly responsible in the situation. These may include immediate family members, a supervisor or department chair. Don't assume things have improved if the individual's mood suddenly lifts without a visible cause. The person may have simply decided to get out of an apparently hopeless situation by ending his or her life. Share this observation with others involved and continue to push for professional assistance. In a life-threatening crisis, remember the 911 telephone number. The police have the skills and legal authority to manage crises. You incur no legal liability in requesting their help.

After a life-threatening act has occurred, it is normal to question what you or someone else could have done differently that would have prevented it. Professional skills, financial resources or the amount or length of help cannot always prevent an individual from harming himself or herself. Caring and effort, however, on the part of concerned others can make a difference in most situations.

Hosokawa is program director of the Employee Assistance Program.



Mizzou Credit Union

Loans • Checking Accts • CUE PHONE • ATMs • Services

LOANS

- low interest rates
- simple, daily interest
- no prepayment penalty
- payroll deduction
- credit Life Insurance at no additional cost up to \$10,000

We Make Loans For Any Good Purpose

— inquire about our Real Estate & Home Improvement Loans



First & Broadway
P.O. Box 1795
Columbia, Mo. 65205-1795



7:30-5:30 M-F Closed 9-10 a.m. Tuesday

874-1477

LETTERS

Stucky urges participation in staff event

Dear Colleagues:

The University of Missouri-Columbia's eighth annual Staff Recognition Week is scheduled for April 6 through 10. The week is designated to recognize the dedication and achievements of the more than 6,000 administrative, service and support staff at

Mizzou.

A calendar of events for the week has been mailed to all staff. I am asking supervisors to encourage staff to participate and to arrange schedules so as many as possible can attend the programs that have been planned.

Please attend the awards ceremony at 2 p.m. Friday, April 10, in Jesse Auditorium to show your appreciation and support of the staff. Please encourage others to attend also.

At the ceremony, among other recognitions, four staff members will receive special honor by receiving Staff Recognition Awards, having been chosen by their peers for outstanding service to the University. Following the ceremony a reception will be held in the Jesse Hall lobby.

I hope to see you at the ceremony.

Duane Stucky
Interim chancellor

FOR THE RECORD

CORRECTION: The March 27 Mizzou Weekly gave an outdated telephone number for Gardell Powell, loss prevention manager. His correct number is 882-7018. Powell is gathering data for a laboratory survey being conducted by Environmental Health and Safety.

ROOM CHANGE: The location of a Staff Recognition Week lecture was changed after the program was printed. "Financial Planning—Looking Ahead Toward Retirement" will be presented at noon April 7 in 248 Nursing School Bldg.

HOTEL RATE: UM faculty and staff are eligible for a corporate rate at Howard Johnson Airport West, 1425 S. Fifth St., St. Charles, Mo. The rate, \$38 for a single or double room, is good through Dec. 31, 1987. To make reservations call (314) 946-6936.

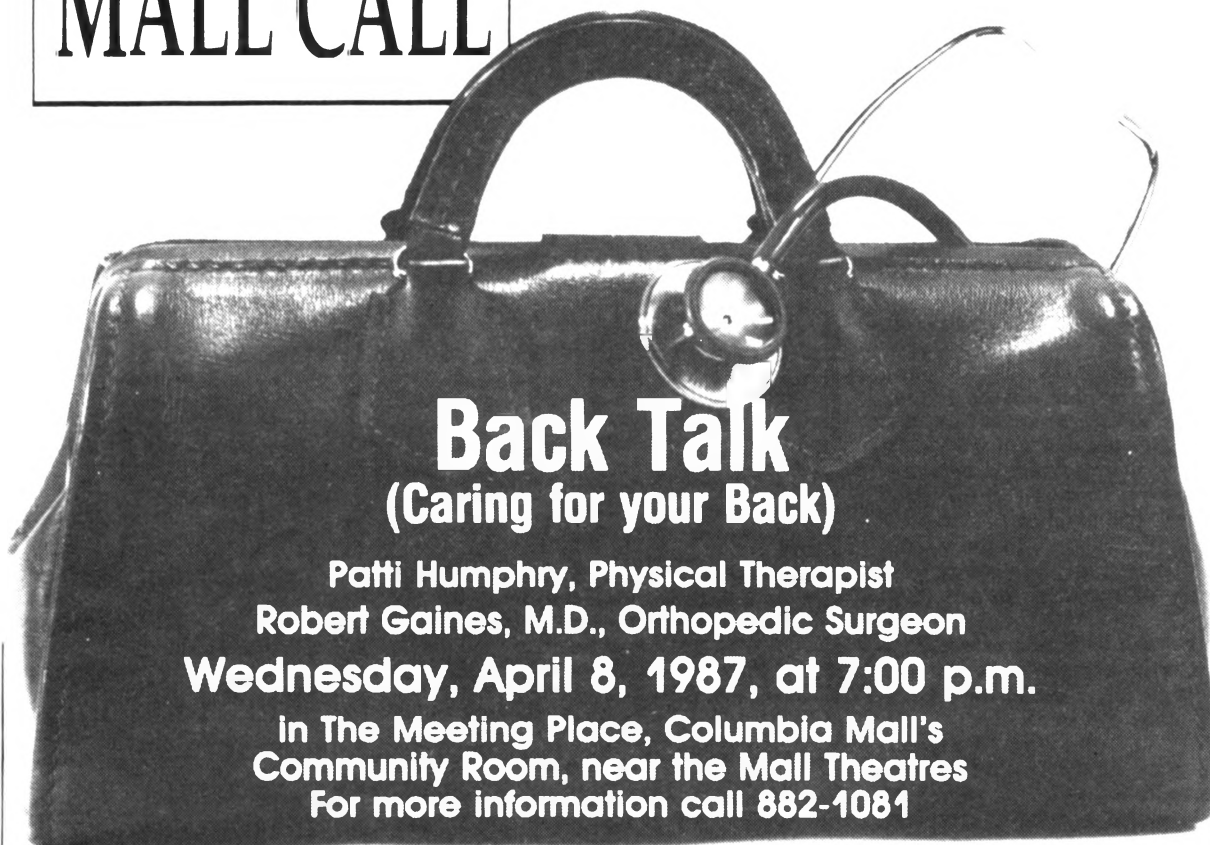
BAGGAGE INSURANCE: Diners Club no longer offers coverage up to \$100 for personal expenses if baggage is delayed more than 24 hours. However, Diners Club will continue to cover the loss, theft, pilferage, significant damage or destruction of baggage up to a maximum of \$1,500.

DROP CHARGE DROPPED: The St. Louis Lambert National Car Rental Agency has temporarily changed its one-way rate of \$30 a day, 14 cents a mile and a \$35 drop charge for rentals from St. Louis to Columbia. Instead, it charges the daily rate plus 18 cents a mile as provided in the University's discount agreement. The rental agency agreed to waive the drop charge for a limited time to see if volume warrants making it permanent.

RECIPROCAL BORROWING: Mizzou faculty, staff and students may borrow materials from libraries of Columbia College, Lincoln University, Stephens College and William Woods College by presenting their University ID card. These institutions are members of Mid-Missouri Associated Colleges and Universities.

Another program, Missouri Information Exchange (MIX), allows faculty, staff and students to borrow from all publicly supported colleges and universities in Missouri. Patrons must present both a University ID card and a MIX card to borrow from these libraries. The Ellis Library circulation department issues MIX cards upon request.

MALL CALL



Back Talk (Caring for your Back)

Patti Humphry, Physical Therapist

Robert Gaines, M.D., Orthopedic Surgeon

Wednesday, April 8, 1987, at 7:00 p.m.

In The Meeting Place, Columbia Mall's
Community Room, near the Mall Theatres

For more information call 882-1081

UNIVERSITY OF
MISSOURI-COLUMBIA
HOSPITAL & CLINICS



Columbia
1-70 & Stadium Blvd
Columbia, MO
Mall

The Staff for Life

Systems Management

Lillian McQuitty, *Nursing - Med K (4 West)*
Donald Bennett Moreau, *Campus Computing Facilities*
Ronald Dean Nichols, *Campus Facilities*
Alice Pearl Prince, *Child Health Clinic*
Jack Ravenscraft, *Campus Facilities*
Jack Duwayne Rhoades, *Animal Science*
Corene Stapleton, *Intercollegiate Athletics*

25 YEARS

Linda Kathryn Andrews, *Supply Distribution*
Frank N. Bowen, *Campus Facilities*
Ruth Virginia Brockman, *Educational Resources Group*
Frank Cheatom, *Campus Facilities*
Johnnie M. Clark, *Campus Facilities*
Donald W. Fancher, *Cooperative Extension*
Maimen L. Fisher, *Memorial Union/Brady Commons*
Thomas R. Gray, *TV Station*

Wanda V. Heisler, *Robert Graham Center Estate Planning*

Franklin D. House, *Campus Facilities*
Cora Ellen Johnson, *Cashier/Payroll/Student Loans*
Raymond Jerome Leaton, *Campus Facilities*
Donald G. Level, *Bookstore*
J. B. Meyer, *Campus Facilities*
Joyce M. Monroe, *Obstetrics/Dermatology Clinic*
Donald D. Murray, *Office of Research*
Laverne Nielsen-Coose, *Nursing - Medicine K (4 West)*

Albert Smith, *Campus Facilities*
James V. Snodgrass, *Campus Facilities*
Melba Snodgrass, *Residential Life*
Ralph B. Worley, *Campus Facilities*

20 YEARS

Leonardo P. Basurto, *Student Health Services*
Larry Wayne Baumgartner, *Purchasing*
Billy June Blackwell, *Cooperative Extension*
Merle E. Boelsen, *Library*
Nellie J. Branson, *Registrar and Director of Admissions*
Linda Doris Brown, *Residential Life*
Peggy Ann Brown, *Nursing - Pediatrics*
Donald F. Burnett, *Campus Facilities*
Mary Margaret Burnett, *Rehabilitation Services - Administration*

Dorothy Delorise Butler, *Campus Facilities*
Earl Franklin Caruthers, *Electrical Engineering*
Sylvester Leonard Cason, *Food Service*
Janene Gayle Chapple, *Art History and Archaeology*
Wilton Leon Childers, *Fertilizer Control*
Patricia A. Cook, *Cooperative Extension*
Patricia Ann DeLong, *Dean of Business and Public Administration*
Jane Dier-Russell, *Chancellor*
Larry Gale Edwards, *Campus Facilities*
Patricia Elaine Foster, *Missouri Testing and Evaluation Services*

Barbara Lucile Goldman, *Campus Facilities*
Frances Hanks, *Vice Provost Extension*
Nelda Ellen Harmon, *Cashier/Payroll/Student Loans*
Joseph F. Holem, *Campus Facilities*
Bernice Holloway, *Telecommunications*
Carl E. Houchins, *Agricultural Engineering*
Yolanda Rave Hovis, *Surgery*
William L. Hughes, *Campus Facilities*
Curtis Neal Hunt, *Associate Director, Professional Services*

Arleen Mary Kempf, *Dean of Agriculture*
Kenneth Ray Kintner, *Plant Engineering*
Russell Dean Laroe, *Campus Facilities*
Carl Ward Leistner, *Student Development*
Richard Eugene Lewis, *Campus Facilities*
Mildred M. Lind, *Anatomy*
Ross A. Long, *Fertilizer Control*
Ralph F. Mann, *Campus Facilities*
Karen Gay Martin, *Vice Provost Extension*
Norma Lee McCulley, *Supply Distribution*
Marjorie McKenzie, *Bookstore*
Twyla S. Nistendirk, *Residential Life*
Wanda Marie Ocrey, *Pathology*
Barbara Noralene Olds, *Medical Records*
Rose Pearl Prewitt, *Purchasing*
Patricia Quinn, *Educational Resources Group*
Helen Lorine Reynolds, *Residential Life*
Michael Stephen Rippeto, *Academic Support Center*
Rebecca Jo Roberts, *Surgery*
Julia Maude Runk, *Telecommunications*
Anna Pearl Sanders, *Parking and Transportation*
Stephen C. Shinn, *Publications and Alumni*

Communications

Gary Lee Smith, *Registrar and Director of Admissions*
Kay Garcia Smith, *Microbiology*
Teddy Joe Snell, *Educational Resources Group*
Doris Lorraine Stone, *Cashier/Payroll/Student Loans*
Wilfred Lee Tolson, *Associate Director, Financial Services*

Joan Trimble, *Cooperative Extension*
Bettie Jean Turner, *Cashier/Payroll/Student Loans*
Louis Carl Walker, *Plant Engineering*
Delbert D. Wheeler, *TV Station*
James C. Woody, *Campus Facilities*
Gary Lewis Zwonitzer, *Business Services*

15 YEARS

Billie B. Adams, *Center/Research Social Behavior*
Billie Charlene Agent, *Patient Accounts*
Seth Ford Allcorn, *Medicine*
Peggy Sue Allen, *Pathology*
Linda Kay Anderton, *Nursing - Nursery III*
Deborah L. Anthony, *Associate Director Administrative Services*

Anna Robinson Baker, *Provost*
Doris E. Barnhart, *Dean of Journalism*
Geraldine May Beard, *Nursing - Obstetrics*
Bonnie Jean Beckett, *Cooperative Extension*
John Oscar Bequette, *Materials Management*
Mary Dolores Boatman, *Ophthalmology Clinic*
Sylvia A. Bradfield, *Veterinary Pathology*
Marie I. Bramblett, *Employee Health Clinic*
Gloria Dean Britt, *TV Station*
Janice Gail Burger, *Dean of Law*
Helen Louise Cason, *Residential Life*

Mary Lue Cason, *Cashier/Payroll/Student Loans*
Wayne Leroy Churchill, *Campus Computing Services*
Linda Carol Cook, *Cooperative Extension*
Mary Susan Cornell, *Campus Facilities*
Maggie Luetta Crane, *Fertilizer Control*
Idella Elizabeth Crews, *Residential Life*
Doyle W. Cronan, *Delta Center*
John Henry Dilse, *Plant Engineering*
Phyllis Marie Erhart, *Pathology*
Mabel Louise Ewens, *Patient Accounts*
John Wilbur Fagan, *Campus Facilities*
John Shaffer Fick, *Academic Support Center*
Betty Ruth Ganaway, *Food Service*

Linda Kay Garrett, *Payroll and Central Processing*
Peggy Southerland Glenn, *Residential Life*
Sara Ellen Green, *Veterinary Microbiology*
Robert Lee Guthrie, *Clinical Engineering*
Francis Lee Hagan, *Campus Facilities*
Joel Lloyd Haley, *Campus Facilities*
Cathy Lynn Harlan, *Surgery*
Felix Loren Head, *Residential Life*
Bonnie H. Heidy, *Vice Provost Extension*
Norbert Hillard Hein, *Campus Facilities*
Wilbur Eugene Hein, *Purchasing*
Marian Henke, *Medical Records*
Geraldine Fay Hieke, *Student Financial Aids*
James Gilbert Huesgen, *Environmental Health and Safety*

Leigh Collier Huesgen, *Family and Community Medicine*
Stanley J. Hughes, *Campus Facilities*
Barbara Ann Huse, *Police*
Bobby L. Jackman, *Campus Facilities*
Georgia Alice Johnson, *Residential Life*
Richard Lee Jones, *Campus Facilities*
Roger Wayne Karwoski, *FM Station*
John Richard Kemp, *Office of Research*
Pauletta G. King, *Accounting Services*
Betty Irene Laswell, *Purchasing*
Marjorie A. Leavene, *Dean of Engineering*
Jeanette R. Leroux, *Medicine*
Edward J. Linn, *Missouri Institute of Psychiatry*
George W. Loesing, *Security*
Doris W. Martin, *Veterinary Medicine and Surgery*
Elma P. Melegrito, *Nursing - Rehabilitation West (Rusk 5)*

Jeanne Frances Meyer, *Vice Provost Extension*
Mary L. Meyer, *Accountancy*
Rebecca Ann Meyer, *Associate Director Financial Service*
Mary Kathrine Miller, *Residential Life*
Thomas Mitchell, *Campus Facilities*
Viola Mae Nelms, *Campus Facilities*
Vera J. Nibbelink, *Telecommunications*
James Robert Oglesby, *Facilities Utilization*

Donna C. Otto, *Director, Hospital and Clinics*
Peggy J. Perkins, *Surgery*
Eugene Thomas Pierce, *Campus Facilities*
Michael Anthony Pierce, *Residential Life*
Carol L. Pipes, *Payroll and Central Processing*
Christine Poe, *Bookstore*
Larry Thomas Poe, *Campus Facilities*
Lester V. Poe, *Residential Life*
Ronald E. Poe, *Campus Facilities*
Sammie L. Potts Jr., *Physics*
Pamela B. Pugh, *Pathology*
Lois L. Richardson, *Cashier/Payroll/Student Loans*
Edward Howard Robb, *Dean of Business and Public Administration*

David Elson Sappington, *Computer Center*
Ed Schlotzhauer, *Residential Life*
William J. Schmitz, *Campus Facilities*
Virgil A. Scott, *Plant Engineering*
Alma Sue Smith, *Radiology*
Roscoe Stemmons, *Campus Facilities*
Ruby Stone, *Intercollegiate Athletics*
Norma Q. Stroupe, *Cooperative Extension*
John F. Taylor, *Vice Chancellor Administrative Services*
John William Thomas, *Plant Engineering*
Jerry Bennett Thornton, *Campus Facilities*
Jerry Wayne Trumbo, *Campus Facilities*

Lyndle Ray Vanskike, *Animal Science*
Susan A. Vogt, *Missouri Institute of Psychiatry*
Walter Allen Watson, *Campus Facilities*
Robert Walker Wells, *Campus Facilities*
John Thurman White, *Agricultural Engineering*
Stanley Ray White, *Computer Center*
Betty Jean Williams, *Radiology*
Herbert Burnis Williams, *Computer Center*
Rose Marion Williams, *Student Financial Aids*
Judy Dee Ann Wilson, *Family and Community Medicine*

10 YEARS

Susan Joyce Aitkens, *Dean of Business and Public Administration*
Dorothy Louise Allen, *Residential Life*
Kathleen Shaw Angsten, *Nursing - I and D*
David E. Apel, *Campus Facilities*
Ella Mae Armstrong, *Campus Facilities*
Sandra K. Ballenger, *Physical Therapy - Hospital*
Carolyn Kay Barnes, *Intercollegiate Athletics*
Paula Jean Belyea, *Recreation and Park Administration*
William Hughes Bennett, *Office of Research*
Emil Kenneth Bittner, *Office of Research*
Rebecca Faye Bohlmeier, *Campus Computing Facilities*

James Dean Bond, *Campus Facilities*
Darrell Boone, *Campus Facilities*
Daniel Keith Branson, *Computer Center*
Cynthia Gray Brooks, *Nursing - B Intensive Care Unit*
Douglas Paul Brown, *Campus Facilities*
Jeanette Marie Brown, *Neurosurgical Unit*
Susan E. Brown, *Medicine*
Nellie M. Buckner, *Residential Life*
Barbara Lynne Burnett, *Vice Provost Extension*
Angela Marie Carmichael, *Purchasing*
Charlotte Alice Chally, *Surgical Services*
Randy J. Cheek, *Computer Center*

Kelly Ann Christy, *MPIP Patient Relations*
Benjamin Eugene Colley, *Campus Computing Facilities*
Rothetta Coonce, *Vice Provost Extension*
Deborah Dale Cotterill, *Surgery Clinic*
Carla S. Perkins Cox, *Forestry, Fisheries and Wildlife*
Archie Marvin Daniels, *Forage Beef*
Joan Darkow, *Atmospheric Science*
Ronald Willis Davidson, *Campus Facilities*
Darlene Dixon, *Provost*
Barbara J. Douglass, *Child Health*
Montalee Duncan, *Residential Life*
Rhonda Jean Duncan, *Purchasing*
Nancy J. Dykstra, *Educational and Counseling Psychology*

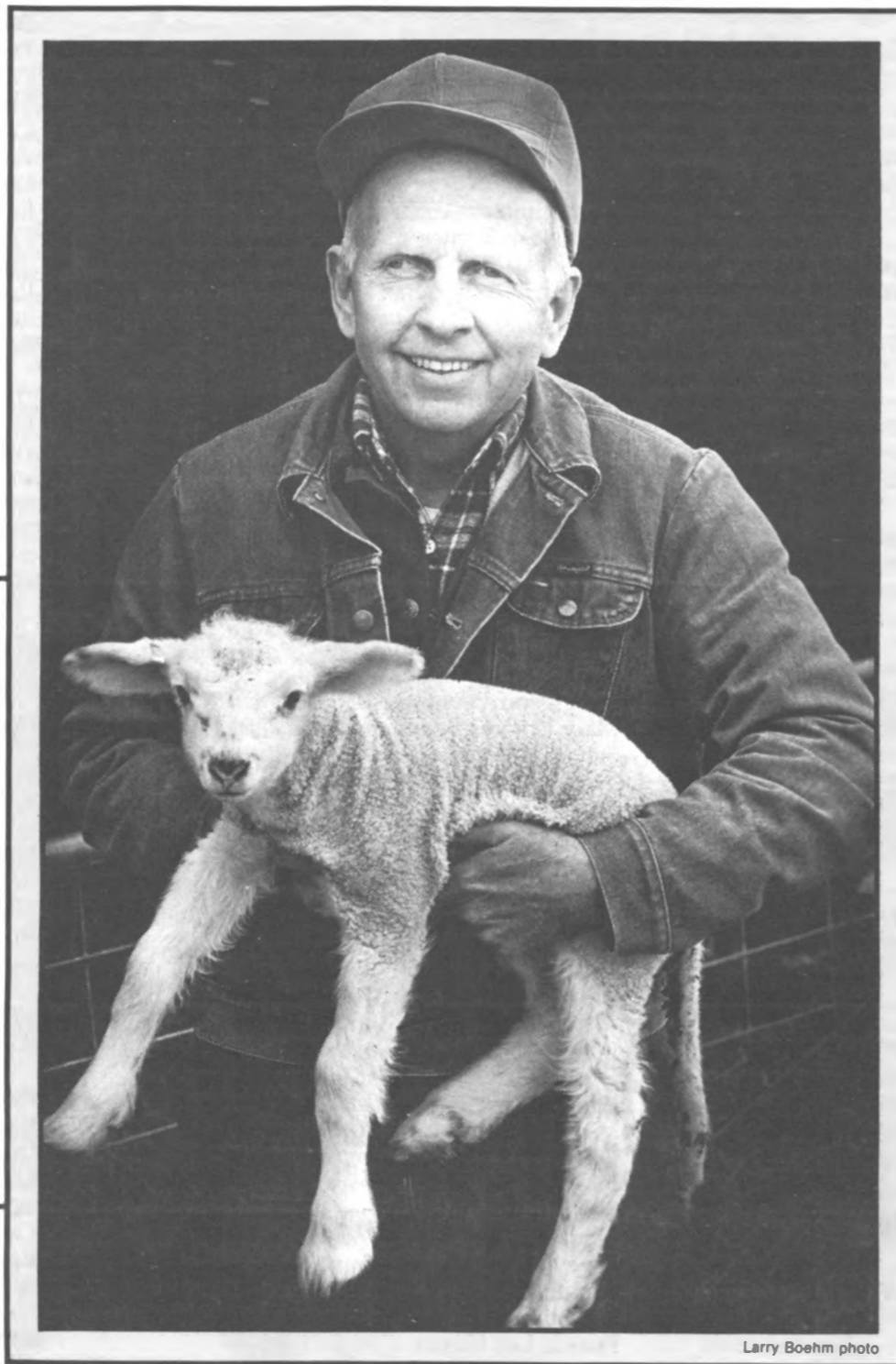
Eugenia Marie Eckenfels, *Agricultural Economics*
Robert Dale Eubanks, *Student Development*
Clinton B. Falles, *Residential Life*
Anna Belle Fenley, *Residential Life*
Linda Lou Fenner, *Campus Facilities*
Belinda L. Ford, *Pathology*
Gloria L. Gantt, *Horticulture*
Kim Gilmore, *Memorial Union/Brady Commons*
Marian Candace Godwin, *Pathology*

Please turn to Page 8.

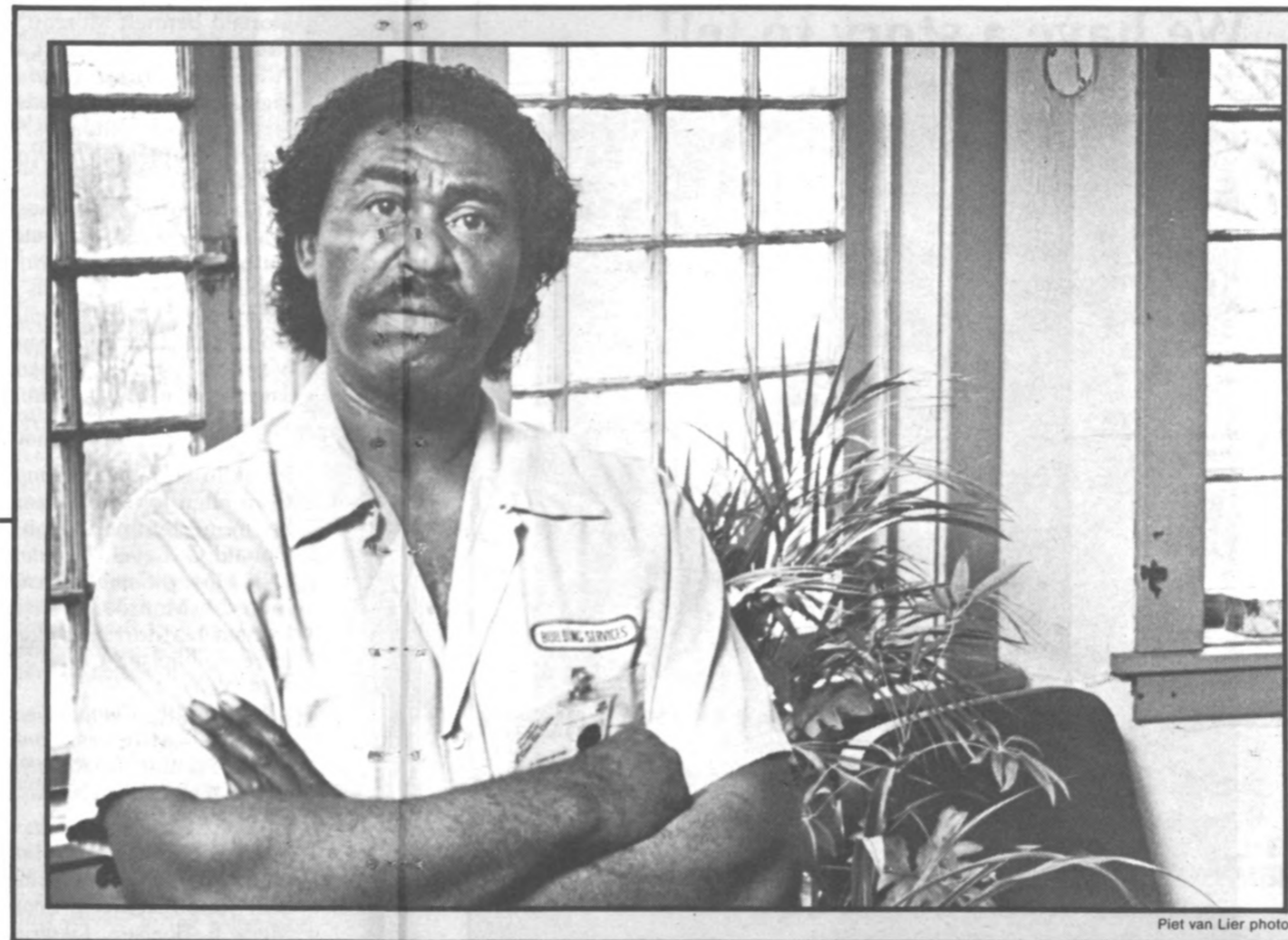
Showcasing staff stars

Dependable, efficient and enterprising, these four staff members are 1987 winners of \$750 Staff Recognition Awards. They'll be honored at an April 10 ceremony.

Stories by Mary Vermillion

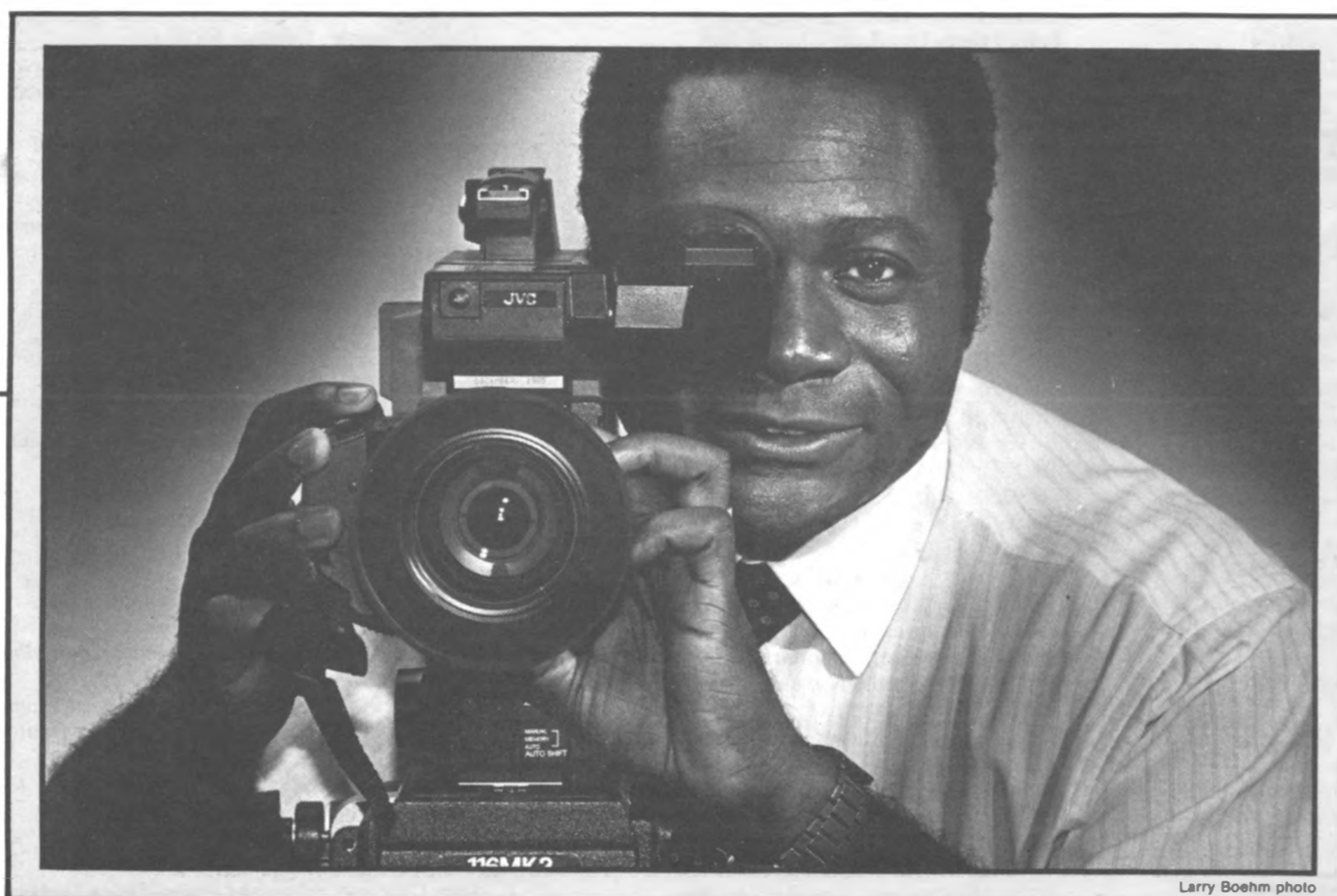


Larry Boehm photo



Piet van Lier photo

Winners are, clockwise, Jack D. Rhoades, C. Wood "Buddy" Hatton Jr., Marilyn Keil and Charles Redmond.



Larry Boehm photo



Piet van Lier photo

'I'm teaching the students something'

Jack D. Rhoades' office is a blue barn atop a sloping meadow at the University's South Farm. The peaceful atmosphere suits the soft-spoken shepherd who tends 600 sheep and oversees 300 acres.

Rhoades, who grew up on a farm near Mexico, Mo., is accustomed to the work, even when it means getting up throughout the night to check on the ewes during lambing time. But winning awards is something new. The research specialist with the Animal Sciences Department is the winner in the administrative/professional category.

Runners-up are Gail Benjamin, education nurse II with Nursing Services at the University Hospital; Barbara Breen, executive staff assistant with the Engineering Experiment Station; and Ron Haffey, administrative manager in Dairy Science Extension.

"Jack's most admirable traits are his dependability, initiative and honesty. As

many have found, a task asked of Jack is as good as done," says Duane Keisler, assistant professor of animal sciences.

A University employee for 30 years, Rhoades, BS Agr '57, applies education and years of experience to his work. Nominators noted that the sheep he tends are free of diseases that plague other flocks. They also credit him for his willingness to teach students. Sheep production labs and other agriculture classes regularly visit the barn for instruction. "I enjoy helping with the labs," Rhoades says. "I feel as if I'm teaching the students something."

Rhoades also coordinates extension projects that pull in people from all over the state, including a shearing school.

He is proud of the graduate students who have gone on to prominent corporate positions in the field. But that wouldn't be the life for him. He's comfortable in his big blue barn.

'I like being associated with people'

C. Wood "Buddy" Hatton Jr. makes a grand old house shine.

Hatton, a janitor with Campus Facilities, is proud of his work at the Center for Research in Social Behavior at 111 Stewart Road. The former private residence and fraternity house was built in the 1890s and rebuilt in the 1930s after the original structure burned down. "You got to like the house. You fall in love with it," says Hatton, the winner in the crafts/maintenance category.

Runners-up are Maurice Goldman, janitor with Campus Facilities; Joseph Holem, painter III with Campus Facilities; and Jim Oneill, maintenance service attendant with Plant Engineering at the University Hospital.

A University employee for eight years, Hatton works from 5 a.m. to 1 p.m. He divides his maintenance time between Campus Computing Facilities and the research center. Then it's on to Hickman High School where he works as a janitor

from 2:30 to 11 p.m. He says it's the people that make the demanding work worthwhile. "I like being associated with people like this. You don't mind going to work in the morning when you work with people as nice as these are."

The staff appreciate him, too. Billy Adams, administrative associate at the research center, says Hatton "really shines in his relationships with his associates. He made friends with virtually everyone in the building."

Adams also commends Hatton's work. "I admire how he made this old house look good. He's alert to problems that need solving."

"He's almost too dependable for his own good," she adds. "We have to remind him to take his earned days off so he won't lose them."

Hatton's \$750 prize enables him to do just that. He's dreaming of California for his next vacation.

'I keep the work flowing through'

The English Department is as organized as a well-written novel, thanks to Marilyn Keil, senior secretary and author of this efficiency. For this voracious reader, there couldn't be a more appropriate department in which to work. She is the winner in the secretarial/clerical category.

Runners-up are Debi Bond, secretary in the Communications Department; Shirley Calvin, senior secretary in Extension Information; and Eula Caruthers, administrative assistant in Dairy Science Extension.

A University employee since 1980, Keil says she started out in the English Department because that's where the job opening was. "But I've been an avid reader all my life. There couldn't possibly be a better place to work." She compares notes on the latest novels with the professors in the department.

Keil's love of literature and understated

efficiency were noted by the more than 20 English Department faculty members who nominated her for the award. They describe her as practical and intelligent.

As the department chair's secretary, Keil assists the chair as well as 32 professors. She also supervises a clerk typist and student assistants. "I'm really the office manager," she says. "I just keep the work flowing through."

Organization is the key to running an efficient office, she says. "In this department, with 32 professors and 80 to 90 TAs, you have to change your priorities 10 times a day."

Her concern for students and dedication to her job have not gone unnoticed. "She's a star," a reporter said in explanation to a faculty member's puzzled looked during Keil's Mizzou Weekly photo session. His response: "Damn right."

'It's always go, go, go around here'

Charles Redmond says he's never won an award or been "singled out." His time has come. The electronics technician II with the Educational Resources Group in the School of Medicine is the winner in the technical/paraprofessional category.

Runners-up are Bob Chaney, senior research engineering technician with Chemical Engineering; DeeAnn Dunivan, senior animal health technician with Veterinary Medicine and Surgery; and Darline Stuck, senior radiology technologist with the Veterinary Teaching Hospital/Radiology.

Redmond and the other members of the staff are in charge of equipment loan and maintenance, and developing educational video or slide/tape programs for medical faculty and students. He's learned his trade from hands-on experience during 13 years at the University.

"The fast pace suits me. I'm not the type of person to stay still too long," says Redmond, with the trademark smile and giggle that punctuates his conversation. "It's always go, go, go around here. I meet a lot of people, and I like that."

Redmond says the operating room is his favorite for "on-location" films. He's shot footage of bypass operations for use in educational films.

"Not often does a position require someone to interact with medical faculty, patients, students, staff and guest speakers," says Gloria Boyle, director of the Educational Resources Group. "He scores high marks for his interaction with those groups. Charles has an attitude of 'How can I help your department?'"

To his department, Redmond has been a winner for a long time.

Staff Recognition Week '87

MIZZOU SHOWCASE

University of Missouri-Columbia
April 6 - 10

A week of programs and activities for staff in recognition of service to the University. Programs are free and all staff are encouraged to attend.

MONDAY, April 6

Variety Show

NOON-1 P.M.
Jesse Auditorium
Cheer on fellow staff members as they display their talents.

Tour

10 A.M. and 2 P.M.
University Printing and Records Management Services
Phone 882-6894 to make reservations for the one-hour tour.

TUESDAY, April 7

Tour

10 A.M., 2 and 3 P.M.
University Power Plant
Call 882-6894 to make reservations for the one-hour tour.

TUESDAY and THURSDAY, April 7 and 9

Lecture: "Financial Planning — Looking Ahead"
NOON-1 P.M.
Mary Ann Tipton, manager

of Employee Benefits, and David West, professor of finance, will present a retirement planning program for all ages.

April 7: 248 Nursing School
April 9: 1 Arts and Science Building

Lecture: "Sex over 40 (or 20, or 30)"
NOON-1 P.M.

Wayne Anderson, professor of psychology, will repeat this popular lecture offered during Staff Recognition Week 1986.

April 7: 1 Arts and Science Building
April 9: M640 Medical Science Building

WEDNESDAY, APRIL 8

Tour

10 A.M. and 2 P.M.
Research Reactor
Call 882-6894 to make reservations for the one-hour tour.

Recreation and Safety Show

11:30 A.M.-1:30 P.M.
Hearnes Building east concourse and parking lot
Observe fire safety and self-defense demonstrations, explore statewide recreation opportunities or pick up health and safety brochures.

Run/Walk/ Wheelchair Race

12:20 P.M.
Brewer Fieldhouse circle drive
Join the three-mile competitive run or the one-mile non-competitive walk and wheelchair race.

THURSDAY, APRIL 9

Lectures

(See Tuesday listings for times and locations.)

Tour

11 A.M. and 3 P.M.
University Hospital and Clinics
Call 882-6894 to make reservations for the half-hour tour.

FRIDAY, April 10

Staff Recognition Ceremonies 2-4 P.M.

Jesse Auditorium

Honor your peers with your presence. Interim Chancellor Duane Stucky will present four \$750 Staff Recognition Awards to one member of each of the employee subgroups: administrative/professional, crafts/maintenance, secretarial/clerical and technical/paraprofessional.

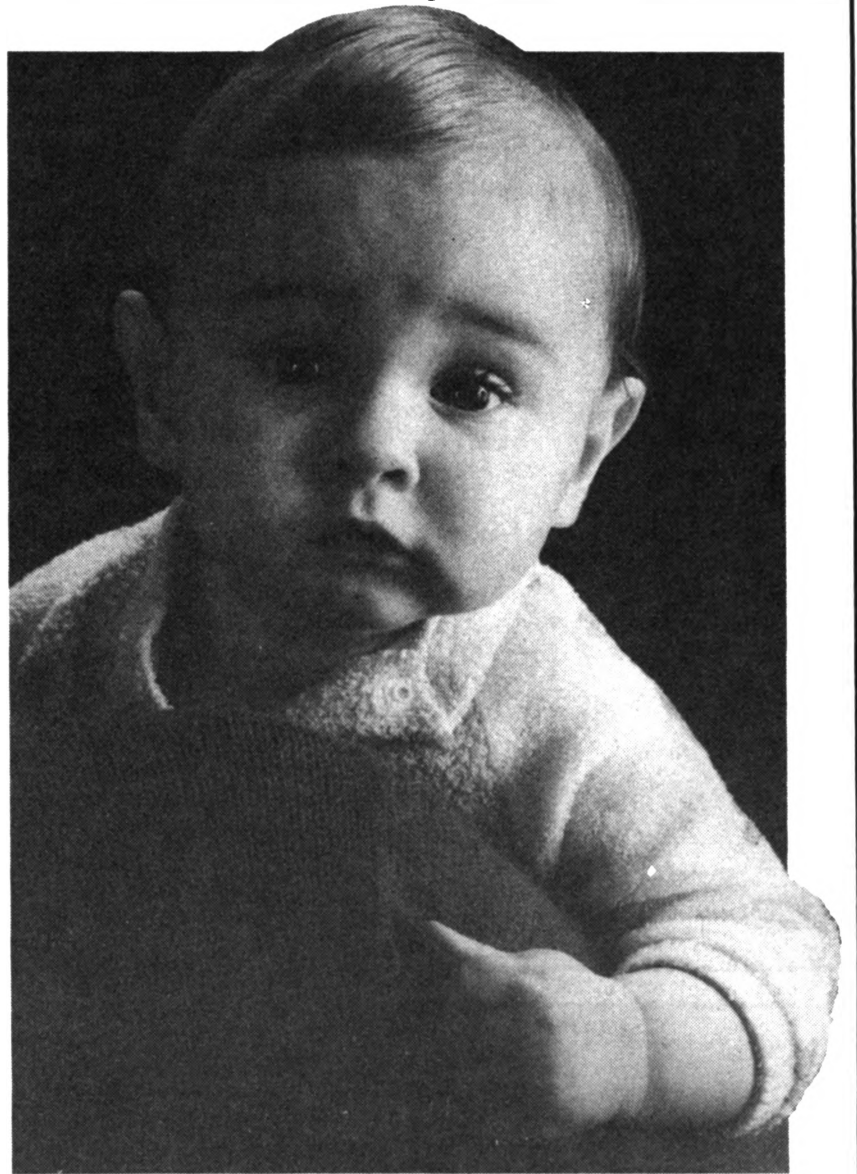
Mizzou Showcase

These activities also will occur throughout the week.

Staff Art Competition: Staff entries in art, photography and fiber art will be displayed from March 29 to April 10 in the Brady Commons' gallery and craft studio. Winners will be announced by April 3.

Food Specials: Celebrate Staff Recognition Week with weeklong specials at all Campus Dining locations.

We have a story to tell . . .



and it's all about kids.

Our story is about special kids, kids battling all kinds of illness, disease and injury. It's about kids who need our help! If you haven't yet experienced the magic of the Children's Miracle Network Telethon, we would like to share our story with you.

Representatives from The Staff for Life will be happy to come to your staff or departmental meetings. We want to share our story with our campus colleagues and answer any questions you may have about our telethon. To experience the magic of mid-Missouri's telethon for yourself, call 882-KIDS.

**Children's
Miracle Network
Telethon**



May 30-31, 1987

**UNIVERSITY OF
MISSOURI-COLUMBIA
HOSPITAL & CLINICS**

For more information
call 882-KIDS.

Danny G. Goe, *Atmospheric Science*
Cindy Marcella Graves, *Missouri Testing and Evaluation Services*
Debra Lou Green, *Respiratory Therapy*
Rose Ann G. Gregory, *Admissions*
Ronald Dale Grizzle, *Plant Engineering*
Joetta Gross, *Purchasing*
Alma Lorraine Hanson, *Cashier/Payroll/Student Loans*
Ira Harris, *Delta Center*
Reginald W. Hatton, *Campus Facilities*
Michael R. Hess, *Campus Computing Services*
Martha Ann Hoefelman, *Cardiology Laboratories*
Linda Mariko Holsinger, *Dean of Agriculture*
Mary A. Hoover, *Student Development*
Robert Sidney Hughes, *Residential Life*
Vicki Sue Humburg, *Dean of Medicine*
Jeannie Lynn Hunter, *Pharmacology*
Leesa Ianke, *Multipurpose Arthritis Center*
Linda Slinkard Idle, *Budget and Reimbursement*
Clifford Archie Inscore, *Veterinary Medicine and Surgery*

Essie Elizabeth Johnson, *Nursing - M Intensive Care Unit*
Lisa Leann Jones, *Development*
Susan Barbara Jones, *Pharmacology*
Darrell Eugene Jordan, *Pathology*
Beverly K. Kabrick, *Entomology Clinic*
Linda Sue Kaiser, *Residential Life*
Barbara Karrick, *Patient Accounts*
Pramila Shriniwas Katti, *Dairy Science*
Barbara Ann Kidwell, *Medicine*
Debbie L. Krienke, *Cashier/Payroll/Student Loans*
Richard James Leduc, *Computer Center*
Daniel Ray Lee, *Supply Distribution*
Mangham David Lehr, *Nursing - Nursery III*
Patricia Ann Love, *Religious Studies*
Lillian Frances Lynn, *Public Administration*
Bruce Gilliland Martin, *Purchasing*
Denise Matroni, *Personnel*
Mary Frances Maxwell, *Cashier/Payroll/Student Loans*
Patricia Louise McCowan, *Residential Life*
Kim Shannon McGinty, *Agronomy*

Russell Edison Miller Jr., *Residential Life*
William Alfred Mitchell, *Campus Computing Services*
Michelle Annette Morris, *Nursing - Rehabilitation West (Rusk 5)*
Glenda Ellen Moum, *Campus Computing Services*
Diann Grace Murphy, *Nursing - Rehabilitation West (Rusk 5)*
Robert Runyan Murphy, *Sterile Processing*
Gayla Marie Neumeyer, *Nuclear Engineering*
Michael Norberg, *Ophthalmology*
Stephen L. Parker, *Campus Facilities*
Janet Leslie Paul, *Campus Computing Facilities*
Dennis Keith Payne, *Campus Facilities*
Jody Lynn Pestle, *Agricultural Economics*
Virginia L. Petty, *Child Health Clinic*
Sally Phillips, *Residential Life*
Jacqueline Sue Pierce, *Health and Physical Education*
Jeanie Poff, *Campus Facilities*
Thomas Denton Rakes, *Counseling Services*
Barbara Lou Ravenscraft, *Intercollegiate Athletics*
Joyce Lynn Reinbott, *Agronomy*

Hilda Pauline Rievley, *Food Service*
John Eugene Roberts, *Fertilizer Control*
I. Corinne Robertson, *Continuing Medical Education*
Clarence Eugene Roland, *Residential Life*
Carol Sue Romano, *Medical School Library*
Mike Kent Russell, *Animal Science*
Jeannie Lynn Samer, *Rehabilitation Services - Administration*
Juno Emerson Sapp, *Prosthetics and Orthotics*
Richard August Schaefer, *Associate Director, Professional Services*
Gary Lee Schnurbusch, *Biological Sciences*
Harold Theodore Sedgwick, *Dairy Science*
Katherine Shaw, *Pathology*
Carol Louise Skinner, *Veterinary Medicine and Surgery*
Georgia Lee Sneed, *Surgical Services*
Connie Y. Spene, *MPIP Patient Accounting*
Sam Craig Spurgeon, *Housekeeping*
Stephen James Staats, *Plant Engineering*
Stephen Alan Steinacker, *Dean of Engineering*
Sandra S. Swasey, *Student Welfare Center*
Steve Ross Tarwater, *Campus Facilities*
Garry Lee Teeple, *Campus Facilities*
Shirley Louise Thomas, *Radiology*
Ronald Lee Thompson, *Pharmacy*
Sylvia Ann Toffle, *Dean's Office - Education*
Lois Yvonne Tolson, *Dean of Engineering*

Fred Edward Tonnie, *Associate Director, Professional Services*
Frances Lorene Turner, *Registrar and Director of Admissions*
Mary Belle Turner, *Agronomy*
Laverne Mae Wade, *Student Development*
Carol S. Waits, *Personnel Services*
Phyllis Ann Ward, *General Studies*
Patricia Louise Wells, *Nursing - Medicine, Central Administration*
John Hubert Wesselmann, *Library*
Donna Sue White, *Child Health*
Mary Ann Wiecek, *Office of Research*
James Medford Willis, *Prosthetics and Orthotics*
Delores Gail Wood, *Obstetrics and Gynecology*
Peggie Anne Wood, *Pharmacy*
Peggy L. Wren, *Surgery*
Phyllis Jean Wren, *Nuclear Engineering*
Gracie L. Wright, *Housekeeping*
Melody A. Zey, *MPIP Patient Accounting*
Peggy Ann Zulaut, *Radiology*
5 YEARS
Everett Leslie Abbey, *Residential Life*
Carolyn Jane Adams, *Nursing - Surgery A (5 West)*
Naomi Mae Aghedo, *Nursing - Obstetrics*
Connie Dee Anderson, *Nursing - Pediatrics*
Tracie L. Anderson, *Dean of Agriculture*

Brigitte D. Anthony, *Vice Provost Extension*
Alan Dale Arnold, *Library*
Ann Elizabeth Austin, *Intercollegiate Athletics*
Robert B. Austin, *TV Station*
Kenneth W. Baise, *Warehouse Operations*
Wilford T. Baker, *Campus Facilities*
Russ Ball, *Intercollegiate Athletics*
Betty Jo Barfield, *Electrical Engineering*
Sharon Bargar, *Pathology*
Bonnie Beth Bass, *Residential Life*
Bobbie G. Bauer, *Nursing - Obstetrics*
Rebecka L. Bechtold, *Computer Center*
Allan S. Benjamin, *Dairy Science*
Howard E. Bennett, *Campus Facilities*
Judith I. Bildner, *Nursing - Nursery III*
Frances H. Blackstone, *Purchasing*
Connie L. Blakley, *Budget and Reimbursement*
Carol J. Bogart, *Emergency Suite*
Sherri Kay Boland, *Multipurpose Arthritis Center*
Brent Eldon Booker, *Animal Science*
Jennifer Bradley, *Nursing - Surgery B (5 East)*
Allen P. Branson, *Computer Center*
Anna B. Brewer, *MPIP Patient Accounting*
David A. Brown, *Plant Engineering*
Mark L. Brown, *Supply Distribution*
Peggy J. Bunton, *Student Health Services*
Miriam T. Butt, *Medicine*



This Week

APRIL 3 - APRIL 9

8
KOMU-TV
COLUMBIA

FRIDAY, APRIL 3:

- 5:30 NBC Nightly News
- * 6:00 NEWSCENTER 8
- * 6:30 Wheel of Fortune
- 7:00 Roomies
- 7:30 Amazing Stories
- 8:00 Miami Vice
- 9:00 Stingray
- *10:00 NEWSCENTER 8
- 10:30 The Tonight Show
- 11:30 Friday Night Videos

SATURDAY, APRIL 4:

- * 6:30 Bullwinkle
- 7:00 Snorks
- 7:30 Gummi Bears
- 8:00 Smurfs
- 9:30 Alvin and the Chipmunks
- 10:00 Foofur
- 10:30 Punky Brewster
- 11:00 Lazer Tag Academy
- 11:30 Kidd Video
- *12:00 One Million Children are Waiting
- * 1:00 Cardinals '87
- * 2:00 Volvo Tennis
- 3:30 Dinah Shore Invitational Golf
- * 5:00 Bill Dance Outdoors
- 5:30 NBC News
- * 6:00 NEWSCENTER 8
- * 6:30 Wheel of Fortune
- 7:00 Facts of Life
- 7:30 227
- 8:00 The Golden Girls
- 8:30 Amen
- 9:00 NBC News Special: "The Baby Business"
- *10:00 NEWSCENTER 8
- 10:30 Saturday Night Live
- *12:00 Western Theatre

SUNDAY, APRIL 5:

- * 7:00 Muppets
- * 7:30 Ken Copeland
- * 8:30 This is the Life
- * 9:00 Dr. D. James Kennedy
- *10:00 Wild Kingdom
- *10:30 Agronsky and Company
- *11:00 MISSOURI FORUM
- 11:30 Meet the Press
- *12:00 To Move Mountains
- 12:30 Volvo Tennis
- 3:00 Dinah Shore Invitational Golf
- * 5:00 New Wilderness
- 5:30 NBC NEWS
- 6:00 Our House
- 7:00 Rags to Riches

Sunday, April 29, Cont'd:

- 8:00 NBC Sunday Night Movie: "Trading Places"
- *10:30 NEWSCENTER 8
- *11:00 Lifestyles of the Rich and Famous
- *12:00 George Michael's Sports Machine
- *12:30 This Week in Country Music

MONDAY, APRIL 6:

- 5:30 NBC Nightly News
- * 6:00 NEWSCENTER 8
- * 6:30 Wheel of Fortune
- 7:00 Alf
- 7:30 Valerie
- 8:00 22nd Annual Academy of Country Music Awards
- *10:00 NEWSCENTER 8
- 10:30 The Tonight Show
- 11:30 Late Night/David Letterman

TUESDAY, APRIL 7:

- 5:30 NBC NIGHTLY NEWS
- * 6:00 NEWSCENTER 8
- * 6:30 Wheel of Fortune
- 7:00 Matlock
- 8:00 Gimme A Break
- 8:30 Easy Street
- 9:00 Hill Street Blues
- *10:00 NEWSCENTER 8
- 10:30 The Tonight Show
- 11:30 Late Night/David Letterman

WEDNESDAY, APRIL 8:

- 5:30 NBC Nightly News
- * 6:00 NEWSCENTER 8
- * 6:30 Wheel of Fortune
- 7:00 Highway to Heaven
- 8:00 Night Court (1 hour)
- 9:00 The Bronx Zoo
- *10:00 NEWSCENTER 8
- 10:30 The Tonight Show
- 11:30 Late Night/David Letterman

THURSDAY, APRIL 9:

- 5:30 NBC Nightly News
- * 6:00 NEWSCENTER 8
- * 6:30 Wheel of Fortune
- 7:00 The Cosby Show
- 7:30 Family Ties
- 8:00 Cheers
- 8:30 Nothing in Common
- 9:00 L.A. Law
- *10:00 NEWSCENTER 8
- 10:30 The Tonight Show
- 11:30 Late Night/David Letterman

*Locally Originated

CABLE INFORMATION: Ch. 7-TCI Cablevision, Columbia and Jefferson City; Ch. 8-TCI Cablevision, Moberly; Ch 8-See TV/TCI, Mexico; Ch. 8-K.T.I., Fulton; Ch. 10-Boonville Cable.

Get big markers. Forget big mark-ups.

Expo Dry Erase Markers—at less than half the retail price!

General Stores lets you buy a box of four Expo Markers (red, green, blue & black) for only



Stock #546
\$2.89. box of 4

\$2.89. Quite a bargain, compared to the \$6 local retail price tag. Use them on paper and other porous materials for permanent marking. Or on the Expo Marking Surface, white porcelain boards, glass and unpainted metal—and erase clean with a dry cloth.

Clean up on Markerboard Cleaner too.

Dry-erase Markerboard Cleaner leaves surfaces free of grease, dirt and ink residue. Use it on all whiteboards, erasable boards, melamine and porcelain steel boards. A 16-oz. unbreakable spray bottle costs you just \$2.23 at General Stores—but \$3.59 elsewhere.



Stock #546A
\$2.23. 16-oz bottle

Save money by shopping at General Stores.

General Stores
Office, janitorial and
maintenance supplies
882-6906

from the can do crew

- Robert T. Byler, *Campus Facilities*
 Garold G. Cady, *Computer Center*
 Connie Jean Caffrey, *Diagnostic Laboratory*
 Teresa Jane Caldwell, *Nursing - Medicine K (4 West)*
 Shirley Ann Calvin, *Cooperative Extension*
 Gwendolyn Kay Camden, *Registrar and Director of Admissions*
 Kimberly Ann Campbell, *Nursing - I and D*
 Sharon G. Campbell, *Animal Science*
 Judy G. Carlos, *Nursing - Medicine J (4 East)*
 Elda Elaine Carothers, *Intercollegiate Athletics*
 Angie M. Carpenter, *Nursing - Obstetrics*
 Ronald K. Cauwenbergh, *Associate Director, Financial Service*
 Cozetta Chalfant, *Respiratory Therapy*
 James Lansing Chambers, *Missouri Institute of Psychiatry*
 Nancy A. Church, *Medical Records*
 John Clark, *Residential Life*
 Georgia Clemons, *Nursing - Nursery III*
 Gina Clevenger, *Nursing - Surgery B (5 East)*
 Deanna K. Crocker, *Agronomy*
 Mary H. Crownover, *Ambulatory Surgery Unit*
 Vicki Morgan Curby, *Learning Center*
 Susan Elaine Curtis, *Cashier/Payroll/Student Loans*
 Patricia Susan Daniel, *Registrar and Director of Admissions*
 Carin E. Davidson, *Admissions*
 Mike L. Davidson, *Patient Accounts*
 Linda Gail Davis, *Ophthalmology*
 Frances L. Deuel, *Associate Director, Financial Service*
 Diane Dews, *Student Development*
 Lynn E. Diel, *Engineering Experiment Station*
 Crystal Dietiker, *Practical Arts and Vocational Technical Education*
 Sherry DiMaggio, *Ophthalmology*
 Hetty Lou Dixon, *Sterile Processing*
 Sharron Lee Dougherty, *Food Service*
 Barbara S. Douglas, *Nursing - Medicine K (4 West)*
 Kim Dude, *Residential Life*
 Linda Marie Dunajcik, *Nursing - Medicine Central Administration*
 Bettylu Dungan, *Nursing - Surgery B (5 East)*
 Kenneth Lee Dunn, *Dean of Arts and Science*
 Donna Sue Dwyer, *Personnel*
 Larry Wayne Eckerle, *Mail Services*
 Mary E. Edler, *Practical Arts and Vocational Technical Education*
 Robert C. Edwards, *Patient Accounts*
 Sandra Elder, *MPIP Patient Relations*
 Glenda Cook Ellis, *Admissions*
 Michelle P. Emery, *Biochemistry (Agriculture)*
 Tammy Endres, *MPIP Patient Accounting*
 Jeanne Marie Engle, *Dean of Home Economics*
 Kimberly Sue Enwright, *Marketing*
 Michael J. Erickson, *Campus Facilities*
 Beverly A. Estill, *Pathology*
 Donnetta Eubanks, *Respiratory Therapy*
 Julius G. Euperio, *Pathology*
 Sheila Evans, *Personnel*
 Elizabeth Angelina Fajen, *Nursing - Rehabilitation West (Rusk 5)*
 Linda Sue Fehling, *Rehabilitation Services - Administration*
 Julie A. Fielder, *Radiology*
 Garvin Filbert, *Chancellor*
 Robert Finstrom, *MPIP Green Meadows*
 Rebekah Flanders, *Entomology*
 Kathleen L. Fleetwood, *Nursing - Coronary Care Unit*
 Andrea K. Floyd, *Bookstore*
 Linda J. Fountain, *Aerospace Studies*
 Rebecca Anne Francis, *Medical Records*
 Dawn Frederick, *Pharmacy*
 Claribell Lou Gallivan, *Vice Provost Extension*
 Chun-Lan Gao, *Ophthalmology*
 Shirley Ann Gay, *Housekeeping*
 Ellen A. Gehringer, *Personnel*
 Carla Marie George, *Electrical Engineering*
 William O. George, *Associate Director, Financial Service*
 Walter E. Gerard, *Occupational Therapy*
 Jag S. Gill, *Medicine*
 Linda S. Glaab, *Accounting Services*
 Sandra Jean Gould, *Purchasing*
 Gary M. Gray, *Educational Resources Group*
 Judy Ann Grundler, *Entomology*
 Karen Cavender Hackmann, *Pharmacy*
 Dorothy P. Hagan, *Student Health Services*
 Mary E. Haley, *Obstetrics and Gynecology*
 Dorothy L. Hanks, *MPIP Data Processing*
 Karen L. Hardiman, *Cashier/Payroll/Student Loans*
 Danny J. Hare, *Plant Engineering*
 Lisa Harmon, *Surgery Clinic*
 Patricia A. Harmon, *Accounting*
 Wayne Harris, *Plant Engineering*
 Bradley C. Hartmann, *Radiology*
 Candace L. Hautgvedt, *Pharmacy*
 Robert L. Hayes, *Campus Facilities*
 Margaret A. Hefner, *Child Health*
 Karla Heidy, *Medical Records*
 Kathryn K. Hermann, *Nursing - I and D*
 Victor Wayne Hickman, *Respiratory Therapy*
 Bryan Dean Hill, *Pharmacy*
 Elaine D. Hocks, *Learning Center*
 Hugh K. Hodler, *Plant Engineering*
 Mary R. Hodler, *Nursing - Pediatrics*
 Melba R. Hoeper, *Child Health*
 Charlene H. Hughes, *Student Health Services*
 Paul Stephen Hughes, *Practical Arts and Vocational Technical Education*
 Kelly L. Humphreys, *Ambulatory Surgery Unit*
 Carol R. Hunter, *Public, and Alumni Communications*
 Frank Austin Ireland, *Veterinary Medicine and Surgery*
 Sharon G. Isaacson, *Dean of Medicine*
 Billy C. James, *Security*
 Kathryn Ann James, *Surgical Services*
 Julie Louise Jeffries, *Medicine*
 Lester D. Jones, *Residential Life*
 Shirley Ann Jones, *News Service*
 Patricia A. Katzer, *Respiratory Therapy*
 Carol Kathryn Keene, *Surgery*
 Paula Gaye Kempf, *Emergency Suite*
 Arlinda Kinkead, *Nursing - I Intensive Care Unit*
 Donald Kintner, *Plant Engineering*
 Sherry Kintner, *Parking Operations*
 Marilyn J. Kippely, *School of Business*
 Delbert Ray Knerr, *Agronomy*
 Marilee Kae Knerr, *Nursing - Obstetrics*
 Linda Kay Knife, *Emergency Suite*
 Lois Norma Knobbe, *Pathology*
 Kathleen M. Koch, *Housekeeping*
 O. Darline Koch, *Agronomy*
 Barbara Ann Koster, *Nursing - Rehabilitation X (Rusk 4)*
 Melissa May Kouba, *Pathology*
 Marilyn Krueger, *Nursing - Nursery III*
 Sandra R. Kubal, *Library*
 Betty Lou Kvvig, *Nursing - Surgery A (5 West)*
 Penny Ann Landreth, *Cardiology Laboratories*
 Linda Calvert Landry, *Nursing - Surgery B (5 East)*
 Kathleen Leach, *Nursing - Consultation and Coordination Service*
 Carrol Ann Lewis, *Dean of Agriculture*
 David A. Lewis, *Ambulance Service*
 Elizabeth Ann Lewis, *Pharmacy*
 Paul Kevin Linneman, *Nursing - B Intensive Care Unit*
 Lucy Lee Little, *Nursing - B Intensive Care Unit*
 Leanne Marie Lowry, *Nursing - Obstetrics*
 William Dennis Luckaman, *Residential Life*
 Mikel L. Lynch, *Medicine*
 Marilyn Joyce Maggi, *Pathology*
 Geraldine Mahoney, *Student Health Services*
 Leslie A. Marklin, *Law (School)*
 Kenneth Gail Marrs, *Nursing - Consultation and Coordination Services*
 Howard W. Marshall, *Office of Research*
 Edmund R. McCurdy, *Security*
 Lorraine A. McFarland, *Vice Provost Extension*
 Steve D. McGhee, *Nuclear Engineering*
 Marsha Anne McKee, *Mechanical and Aerospace Engineering*
 Edith M. McKenzie, *Child Health*
 Ralph A. McKenzie, *Residential Life*
 Susan Elaine Meadows, *Library*
 Mary Ellen Metzen, *School of Nursing*
 Lisa M. Miles, *Nursing - Rehabilitation West (Rusk 5)*
 Cheryl Ann Mitchell, *Residential Life*
 Gail Dian Moore, *Hospital Center Telecommunications*
 Raymond L. Moore, *Hospital Purchasing*
 R. Darlene Morrison, *Cashier/Payroll Student Loans*
 Keith Morrissey, *Intercollegiate Athletics*
 Joyce Marie Moser, *Budget and Reimbursement*
 Norma Lee Mountjoy, *Psychiatry Clinic*
 Ralph Mountjoy, *Plant Engineering*
 Rebecca A. Mowry, *Nursing - Nursery III*
 Marsha Lynne Murray, *Vice Provost Extension*
 Lois Bernice Nauert, *Nursing - Consultation and Coordination Services*
 Judith M. Newberry, *Associate Director, Financial Service*
 Ethel V. Newton, *Infection Control*
 Connie Lynn Nickell, *Ambulance Service*
 Robert A. Nix, *Admissions*
 Virginia L. Northup, *Food Service*
 Kathleen A. O'Leary, *Surgical Services*
 James J. O'Neill, *Plant Engineering*
 Edna Ott, *Nursing - Surgery B (5 East)*
 Kathleen Pauls, *Surgical Services*
 Carmen Julia Payne, *Pathology*
 William F. Peterson Jr., *Campus Facilities*
 Linda Marie Phifer, *Child and Family Development*
 Harlean Phillips, *Nursing - Rehabilitation West (Rusk 5)*
 Velma R. Pierce, *Student Health Services*
 David A. Plattner, *MPIP Patient Accounting*
 Rhonda Kay Polly, *Nursing - Obstetrics*
 Michael H. Procter, *Agricultural Economics*
 Deborah Ann Prost, *Dean of Education*
 Shirley A. Randall, *MPIP Accounting and Analysis*
 Carla Jane Ray-Prenger, *Pharmacology*
 Richard Allen Reynolds, *Nursing - B Intensive Care Unit*
 Mohammad Rezvani, *Veterinary Diagnostic Laboratory*
 Alice Irene Ricker, *Central Foods*
 Pansy S. Riley, *Dean of Journalism*
 Jeri J. Ripley, *Vice Chancellor Administrative Services*
 Dorothy Elaine Robinson, *Campus Facilities*
 David William Roetemeyer, *Computer Center*
 Louis M. Ross Jr., *Geology*
 Charlene L. Runyan, *Ambulance Service*
 Janet E. Sapp, *Surgery*
 Mark Lee Schlemper, *Medical Records*
 Randall R. Schnell, *Campus Facilities*
 Edward R. Schultz, *Security*
 Joe H. Scott Jr., *Delta Center*
 Elizabeth Scott, *Police*
 Susan Donnell Scott, *Nursing - Nursery III*
 Phillip H. Sears, *Campus Facilities*
 Susan G. Seipp, *School of Business*
 Daniel Severns, *Housekeeping*
 Robert C. Shaw, *Respiratory Therapy*
 Deborah Ann Sielert, *Telecommunications*
 David A. Smith, *Food Service*
 Ernest R. Smith, *Campus Facilities*
 Judith Ethel Smith, *Surgical Services*
 Margaret Katherine Smith, *Multipurpose Arthritis Center*
 Michele R. Smith, *Pathology*
 Phillip Duane Smith, *Warehouse Operations*
 Lori Ann St Clair, *Pathology*
 Gregory K. Stafford, *Agronomy*
 Herbert Lee Stanley Jr., *Surgery*
 Lynne M. Stewart, *Nursing - Coronary Care Unit*
 Judith Anne Stock, *Campus Facilities*
 Regina Stotler-Murdock, *Nursing - Rehabilitation X (Rusk 4)*
 Mary B. Stuerman, *Sterile Processing*
 Ralph S. Stull, *Campus Facilities*
 Mark V. Taylor, *Vice Provost Extension*
 Samuel Tekeste, *Supply Distribution*
 Stanley W. Telega, *Dairy Science*
 Douglas X. Tenbrink, *Supply Distribution*
 Carrie M. Thomas, *Housekeeping*
 Jeaniene C. Thompson, *Associate Director, Professional Service*
 Julie A. Thorn, *Personnel Services*
 JoAnn Lynn Thorson, *Nursing - B Intensive Care Unit*
 Helen L. Thurston, *Residential Life*
 Amy Lou Tinsley, *Surgical Services*
 Evelyn June Tipton, *Child and Family Development*
 Kathleen Ann Tonnies, *Nursing - Obstetrics*
 Brenda L. Tonyes, *Vice Provost Extension*
 Michele Towns, *Communications*
 Jimmy D. Toy, *Campus Facilities*
 Gregory James Tribble, *Delta Center*
 Bryan K. Turner, *Supply Distribution*
 Kimberly Kay Turner, *Nursing - Nursery III*
 Tammy L. Turner, *Accounting*
 Cyril Allen Ukegbu, *Supply Distribution*
 Janice Ann Vansciver, *Pathology*
 Jayne Ann Wack, *Computer Center*
 Linda J. Wagner, *Pathology*
 Timothy Noel Waller, *Health Facilities Design*

Jill Walters, *Economics*
 Andrew Brian Ward, *Computer Center*
 Alan R. Warden, *Campus Facilities*
 Lena Sue Warren, *Radiology*
 Daniel Lee Watson, *Food Service*
 David Leon Weber, *Mail Services*
 Patricia Lynn Wehmeyer, *Higher and Adult Education and Foundations*
 Earl Brent Westover, *Agronomy*
 Leanna Gay White, *Patient Accounts*
 Mary A. Wiegert, *Missouri Institute of Psychiatry*
 Pamela Susan Willett, *Electrical Engineering*
 H. Lynn Williams, *Child Health*
 Richard S. Wilson, *Child Health*
 Marjean Winscott, *MPIP Patient Accounting*
 Joanne Witting, *Radiology*
 Rose Marie Wood, *Cooperative Extension*
 William W. Woolery, *Sterile Processing*
 Traci Dawn Wren, *Admissions*
 Janet Wulff, *Housekeeping*
 Joan Marie Yates, *Pathology*
 Melanie A. Yates, *Patient Accounts*
 Brian D. Zigterman, *Pathology*
 Lori Jo Zigterman, *Pathology*

David Davis, *Psychiatry*
 Charles Ellis Jr., *Plant Engineering*
 Lula Mae Glover, *Residential Life*
 Raymond P. Hall, *Memorial Union*
 Howard Huskey, *Safety and Risk Management*
 Charles H. Koelling, *Vice Provost Extension*
 Margaret C. Level, *Payroll and Student Accounts*
 Helen Smith, *Statewide Extension*
 Augustus W. Tharp, *Plant Engineering*
 Curtis R. Weston, *Practical Arts and Vocational Technology*

21 to 25 Years

Ralph Baumgartner, *Horticulture*
 Mary R. Birmingham, *Residential Life*
 Dorothy J. Brownfield, *School of Business*
 John A. Gaughan, *Pathology*
 Wanda M. Gooch, *Engineering Experiment Station*
 George S. Hessenbruch, *Plant Engineering*
 Harold A. Hume, *Budget Development and Planning*
 Willis E. Jones, *Residential Life*
 William E. Ketchum, *Plant Engineering*
 Crystal V. Mowrer, *Registrar and Director of Admissions*
 Walter R. Sanderson, *Agriculture*
 Merlin R. Schnell, *Psychology*
 Raymond Schoening, *South Farms*
 Willa P. Turner, *Nutrition and Food Services*

16 to 20 Years

William D. Boon, *Delta Center*
 Mildred Brand, *Registrar and Director of Admissions*
 Nolvin Cartwright, *Campus Facilities*
 Garland E. Crane, *Campus Facilities*
 Jewell Deming, *Facilities Management*
 Herman L. Eiceman, *Delta Center*
 Carl E. Gerding, *Dairy Science*
 Rosa E. Glascock, *Forestry, Fisheries and Wildlife*
 Tommye B. Goff, *Medical Practice Income Plan*
 Jean A. Gorges, *Information Science Group*
 Mary R. Gunter, *Statewide Extension*
 Jewell Franklin, *Statewide Extension*
 Marjorie Herrin, *Lab Animal Center*
 Raymond L. Kay, *Computer Center*
 Dorothy C. Lampp, *Statewide Extension*
 Floyd E. Looney, *Dairy Science*
 Ronald G. Marquette, *Academic Support Center*
 William F. McMahill, *Vice Provost Extension*
 Elizabeth M. Menzel, *Educational Resources Group*
 Imogene Myers, *Operations and Planning*
 William J. Nichols, *Central Food Stores*
 Stanley M. Owen, *Campus Facilities*
 Ralph N. Phillippe, *Campus Facilities*

Joann Polly, *Residential Life*
 Mary Frances Potter, *Journalism*
 Janet Randell, *Sterile Processing*
 Dorothy B. Samuels, *Cooperative Extension*
 Mary E. Schubert, *Statewide Extension*
 Ward E. Schuch, *Physical Medicine*
 Thomas A. Singleton, *Residential Life*
 Clara V. Strawn, *Nursing*
 Raymond B. Swearingen, *Printing and Records Management*
 Kenneth L. Watts, *Housekeeping*
 Wintred Wilkins, *Mail Service*
 Blanche L. Williams, *Statewide Extension*
 Una A. Woodson, *Nursing*

11 to 15 Years

James W. Baskett, *Hospital Security*
 Curtis Black Jr., *Residential Life*
 Roxie A. Cockrell, *Housekeeping*
 Mary M. Foley, *Campus Facilities*
 Frank Garro, *Dalton Research Center*
 Daniel W. Jourdan, *Campus Facilities*
 Martha P. Magill, *Arts and Science*
 James J. Mahan, *Campus Facilities*
 Shirley May, *Statewide Extension*
 James S. Messick, *South Farms*
 Ruthe Milner, *Statewide Extension*
 Ruth P. Mutert, *Arts and Science*
 Helen Marie Nelson, *Employee Benefits*
 Violet Marie Nichols, *Bookstore*
 Charles E. Rupard, *Residential Life*
 Pearl O. Sapp, *Food Service*
 Laurelle D. Shanklin, *Student Health Services*
 Allan W. Sturges, *Curriculum and Instruction*
 Lawrence Todd, *South Farms*
 Eldon Zumwalt, *Security*

5 to 10 Years

Erna Anderson, *Residential Life*
 Dorothy L. Baker, *Statewide Extension*
 Betty J. Butler, *Engineering*
 Mae Fern Cathey, *Food Service*
 Anna P. Colvin, *Campus Facilities*
 Benny C. Dixon, *Chemical Engineering*
 Anna M. Fields, *Museum*
 Mildred J. Forbis, *Purchasing*
 David R. Hart, *Intercollegiate Athletics*
 Dorothy Hayes, *Nursing*
 Gloria List, *Pathology*
 Alberta L. Macon, *Residential Life*
 Charles E. Montague, *Campus Facilities*
 Lois M. Pauley, *Development*
 Larry L. Richardson, *Rehabilitation Services*
 William F. Robinson, *Housekeeping*
 Patricia J. Scholes, *Coop Extension*

Retirees

40 Years

Billy T. Brown, *Campus Facilities*

39 Years

A. C. Stotler Jr., *Multipurpose Auditorium*

38 Years

William Callahan, *Intercollegiate Athletics*
 George Washington, *Residential Life*

36 Years

Holman B. McLoad, *University Printing*
 Alva K. Reeves, *Supply Distribution*

35 Years

Johnny R. Harty, *Forestry, Fisheries and Wildlife*
 Winifred McDonald, *Intercollegiate Athletics*

31 to 34 Years

James Walter Crane Sr., *Campus Facilities*
 Anna N. Currence, *OB Dermatology Clinic*
 Henry T. Lee, *Agronomy*
 Ruth McCown, *Surgery*
 William Reagan, *TV Station*
 Joseph Frank Roberts, *Registrar and Director of Admissions*

26 to 30 Years

Allene M. Bledsoe, *Neurology*
 Mary E. Cross, *Food Service*
 Dorothy M. Crum, *Food Service*

Attention Secretaries!

Mark Your Calendars for University Bookstore's
 Office Products/Computer Products Show
 and Special Luncheon
 In Honor of Secretary's Week

APRIL					
20th					

CAMPUS OPEN HOUSE AND BUS TOURS

April 22, 1987 10 a.m. to 2 p.m.

Buses will take visitors to open houses at Providence Point, Chancellor's Residence and Conley House. Bus tours are also available to view new campus construction - Agriculture Engineering, Ellis Library addition, Law Building and parking garages.

To enable scheduling for bus tours, please sign, clip and mail the form below to reach Visitor and Guest Relations, 103 Heinkel, by April 8. Bus routes will be announced in MIZZOU WEEKLY issue of April 17.

Name _____

Phone _____

Title _____

Office Address _____

Circle Preferred Time (s)

A. Open House Tour
 10 a.m. 11:30 a.m. 1 p.m.

B. Bus Tour of Construction Sites
 10 a.m. 11:30 a.m. 1 p.m.

CALENDAR

Send calendar items in Campus Mail to Scott Wyman, Mizzou Weekly, 1100 University Place, by noon Friday the week before publication. Events are free and open to the public unless otherwise noted.

Highlights

CONCERT SERIES: The Beaux Arts Trio will perform at 8 p.m. April 3 in Jesse Aud. Cost: \$12 faculty/staff, \$11 students.

RECEPTION AND LECTURE: John Foley, professor of English and director of the Center for Studies in Oral Tradition, will present "Our Girls Used to Marry Boys Over There" at 5:30 p.m. April 7 in the Missouri Cultural Heritage Center gallery, Conley House second floor. Reception will be held at 5 p.m.

PEACE STUDIES: The movie, "Gandhi," will be shown at 8 p.m. April 7 in the Education Aud. of Hill Hall. Cost: \$2 for faculty/staff, \$1.50 for students.

TAP DAY: Event will be held from 9:15-10:15 a.m. April 8 on Francis Quadrangle.

3 Friday

MISSOURI INSTITUTE OF PSYCHIATRY: William Knoedler, director of the program of assertive community treatment at Mendota Mental Health Institute, will discuss "The Long-Term Community Treatment of Major Psychiatric Disorders" from 1-3 p.m. in the Kohler Bldg. Aud., St. Louis State Hospital Complex, 5400 Arsenal St., St. Louis.

CONCERT SERIES: See Highlights.

4 Saturday

WOMEN'S CENTER: Mary Boyd, financial planning consultant, will present "Financial Planning" at 9 a.m. in the Women's Center, 1 Gentry Hall. Call 882-6549 to register.

MSA FILM: "True Stories," rated PG, will be shown at 2 p.m. in Ellis Aud. Cost: \$2.

COLLEGE OF EDUCATION ALUMNI AWARDS BANQUET: Event will be held at 6:30 p.m. in N201-202 Memorial Union. Cost: \$9.50. Call 882-5118.

CRAFT STUDIO: Children's Workshop will be held from 6:30-9 p.m. Saturdays through May 2 in 203 Brady Commons. Call 882-2889.

MSA FILM: "Top Gun," rated PG, will be shown at 7 and 9:30 p.m. in Jesse Aud. Cost: \$2.

MSA FILM: "True Stories," rated PG, will be shown at midnight in Ellis Aud. Cost: \$1.50.

5 Sunday

MSA FILM: "True Stories," rated PG, will be shown at 2 p.m. in Ellis Aud. Cost: \$2.

RECITAL: Carrie DeLapp, soprano, will perform at 4 p.m. in the Fine Arts Recital Hall.

MSA FILM: "Foreign Correspondent," not rated, will be shown at 8 p.m. in Memorial Union Aud. Cost: 50 cents.

6 Monday

STAFF RECOGNITION WEEK: "Mizzou Showcase" will continue through April 10.

STAFF RECOGNITION WEEK CAMPUS TOUR: A tour of University Printing and Records Management Services will be available at 10 a.m. and 2 p.m. Call 882-6894 for reservations.

STAFF RECOGNITION WEEK VARIETY SHOW: Event will be held from noon-1 p.m. in Jesse Aud. Seating available at 11:30 a.m.

WOMEN'S CENTER: Karen Stout, assistant professor of social work, will present "Femicide: The Killing of Women by Male Partners" at noon in the Women's Center, 1 Gentry Hall.

CAMPUS COMPUTING SHORT COURSE:

"Introduction to ISSCO Graphics" will be held from 2:40-4:30 p.m. through April 10 in 106 Lefevre Hall. To enroll call 882-2112.

LECTURE: Jerry Moles of the Neosynthesis Research Center in Sri Lanka will speak on "Applied Social Science and Working for a Third World Organization" at 3:40 p.m. in 2047 Engineering Bldg.

BIOCHEMISTRY SEMINAR SERIES: Mark A. McIntosh, associate professor of microbiology, will present "Molecular Characterization of Bacterial Iron Transport" at 3:40 p.m. in 322 Chemistry Bldg. Refreshments will be served at 3:30 p.m.

WOMEN STUDIES COLLOQUIUM: Dorothy Haecker, director of women studies, will present "Feminist Objectivity" at 7:30 p.m. in S7 Memorial Union.

FACULTY RECITAL SERIES: Missouri Arts Quintet will perform at 8 p.m. in the Fine Arts Recital Hall.

MSA FILM: "Death of a Cyclist," not rated, will be shown at 8 p.m. in Middlebush Aud. Cost: \$1.

7 Tuesday

EMPLOYEE DEVELOPMENT SEMINAR: "Assertiveness/Your Perfect Right" will be presented by Jeanne Nolan, assistant program director of UM extension, from 9 a.m.-noon in the Education and Development Center of the Heinkel Bldg. To register call 882-4859.

STAFF RECOGNITION WEEK CAMPUS TOUR: Tours of the University Power Plant will be available at 10 a.m., 2 and 3 p.m. Call 882-6894 for reservations.

STAFF RECOGNITION WEEK LECTURE: Mary Ann Tipton, manager of UM Employee Benefits, and David West, professor of finance, will present "Financial Planning—Looking Ahead Toward Retirement" at noon in 248 Nursing School.

SPRING ATHLETIC TEAM LUNCHEON: Faculty are invited to the luncheon, which features the men's basketball program, at noon in the Dutton Brookfield Facility. Cost: \$3. To register call 882-2076.

STAFF RECOGNITION WEEK LECTURE: Wayne P. Anderson, professor of psychology, will present "Sex Over 40 (or 20, or 30)" at noon in 1 Arts and Science Bldg.

WOMEN'S SOFTBALL: Team will play Columbia College at 2 p.m. at University Field.

LECTURE: Jerry Moles, director of the Neosynthesis Research Center in Sri Lanka, will speak on "The Sustainability of World Agriculture: A Responsibility of Our Time" at 3 p.m. in S7 Memorial Union.

CHEMICAL ENGINEERING LECTURE: A. Kent, chair of the Department of Mechanical Engineering at Southern Illinois University, will speak on "Coal Desulfurization with Supercritical Alcohol" at 3:40 p.m. in 1034 Engineering Bldg.

RECEPTION AND LECTURE: See Highlights.

CENTRAL AMERICA FILM SERIES: "In the Name of Democracy," "Testimony," and "So We Proceed" will be shown at 7 p.m. in Gannett Aud.

CPPC ADULT EVENING SEMINAR: "Women in the Workplace: Assertion on the Job" will be held from 7-9 p.m. at the Career Planning and Placement Center, 220 Noyes Hall.

PEACE STUDIES: See Highlights.

8 Wednesday

SCHOOL OF NURSING CONTINUING EDUCATION PROGRAM: Mary Johnson, clinical nurse specialist in the division of Nursing Services at University Hospital and Clinics, will present "Management of Pain" from 8:30 a.m.-noon at the Holiday Inn Executive Center, 2200 I-70 Drive S.W. Cost: \$20. Call 882-0216.

TAP DAY: See Highlights.

STAFF RECOGNITION WEEK CAMPUS

TOUR: Tours of the University Research Reactor will be available at 10 a.m. and 2 p.m. Call 882-6894 for reservations.

STAFF RECOGNITION WEEK RECREATION AND SAFETY SHOW: Event will be held from 11:30 a.m.-1:30 p.m. on the east side of the Hearnes Bldg.

STAFF RECOGNITION WEEK RUN/WALK/WHEELCHAIR RACE: Participants will meet at noon at Brewer Fieldhouse. Race will begin at 12:20 p.m.

MIDDAY GALLERY TALK: Marcus Rautman, assistant professor of art history and archaeology, will present "A Lenten Offering: Liturgical Silver" at 12:25 p.m. in Pickard Hall.

KENNETH F. STRUESSEL MEMORIAL LECTURE: Gerald T. Perkoff, curators professor in the Department of Family and Community Medicine, will present "Rational Suicide: The Ultimate Refusal of Therapy" at 1 p.m. in the Truman Veterans Hospital Aud.

WOMEN'S SOFTBALL: Team will play Kansas at 2:30 p.m. at University Field.

OPEN OFFICE HOURS: Provost Lois DeFleur will hold open office hours from 3-5 p.m. in 114 Jesse Hall for one-on-one discussions with faculty, staff and students.

WELDON SPRINGS HUMANITIES SEMINAR: David H. Weinglass, professor of English at UMKC, will present "Fuseli: An Artist and His Engravers" at 3:30 p.m. in Pickard Hall. A wine-and-cheese reception will follow.

HONORS THREE CULTURES LECTURE: James Shirkey will present "Art as Social Comment" at 4 p.m. in S8 Memorial Union.

CPPC: "Orientation to Career Planning and Placement Center Services" will be held from 4-5 p.m. in 110 Noyes Hall.

BASEBALL: Team will play Missouri Western at 5 p.m. at Simmons Field. Cost: \$2 faculty/staff, \$1 students.

UNIVERSITY HOSPITAL: "Back Talk—Caring for Your Back" will be presented at 7 p.m. at Columbia Mall Meeting Place.

GRADUATE READING SERIES: Adam Davis, Jonathan Bracker and Dave Dobson will present readings from poetry or fiction at 7 p.m. in S16 Memorial Union.

WOMEN'S CENTER: People United for Peace, a group of elementary-school and high-school students, will discuss their thoughts and activities at 7 p.m. in the Women's Center, 1 Gentry Hall.

STUDENT ENSEMBLE SERIES: Trombone/Tuba Ensemble with Jeffrey Lemke, director, will perform at 8 p.m. in the Fine Arts Recital Hall.

MSA FILM: "My Dinner With Andre," rated PG, will be shown at 8 p.m. in Ellis Aud. Cost: \$1.

9 Thursday

SCHOOL OF NURSING CONTINUING EDUCATION BREAKFAST SEMINAR: "Influencing the Outcome of Pending Legislation in the 84th Missouri General Assembly" will be held from 7:30-9:30 a.m. at the Holiday Inn Executive Center, 2200 I-70 Drive S.W. Cost: \$10, includes breakfast. Call 882-0215.

SCHOOL OF NURSING CONTINUING EDUCATION PROGRAM: Sixth annual Nursing Research Conference will be held from 7:30-9:30 a.m. today and from 8 a.m.-4 p.m. April 10 in the School of Nursing Bldg. Cost: \$55. Call 882-0216.

EMPLOYEE DEVELOPMENT SEMINAR: "Managing the Troubled Employee" will be presented by Jim Irvin, director of counseling services, and Betty Hosokawa, program director of the Employee Assistance Program, from 9 a.m.-4 p.m. at the Education and Development Center in the Heinkel Bldg. To register call 882-4859.

PHI ZETA-BEECHAM RESEARCH DAY: Event will be held from 1-5 p.m. in the Veterinary Medical Hospital Aud.

MATHCOUNTS: College of Engineering will sponsor the state mathematics contest for junior-high-school students at the Hearnes Bldg. Awards ceremony will be held at 2:30 p.m. Call 882-2423.

STAFF RECOGNITION WEEK CAMPUS TOUR: Tours of University Hospital and Clinics will be available at 11 a.m. and 3 p.m. Call 882-6894 for reservations.

STAFF RECOGNITION WEEK LECTURE: Mary Ann Tipton, manager of UM Employee Benefits, and David West, professor of finance, will present "Financial Planning—Looking Ahead Toward Retirement" at noon in 1 Arts and Science Bldg.

STAFF RECOGNITION WEEK LECTURE: Wayne P. Anderson, professor of psychology, will present "Sex Over 40 (or 20, or 30)" at noon in M640 Medical Science Bldg.

WOMEN'S CENTER: Karen Fitzgerald, groups and counseling intern at the center and a doctoral candidate in counseling psychology, will present "You've Got It," a discussion of personal power, at noon in the Women's Center, 1 Gentry Hall.

STAFF COUNCIL: Group will meet at 1:15 p.m. in S206 Memorial Union.

GRADUATE-FACULTY SENATE: Executive committee will meet at 3:40 p.m. in S208 Memorial Union.

CPPC: "Choice or Chance? Deciding Your Academic Major and Career" will be held from 3:45-5 p.m. at the Career Planning and Placement Center, 220 Noyes Hall.

BLACK CULTURE CENTER: "Game Night" will be held at 6 p.m. at the Black Culture Center, 823 Virginia Ave.

ENVIRONMENTAL ENGINEERING SEMINAR: Ron Kucera, deputy director of the Missouri Department of Natural Resources, will present "Poisoned Earth: The Chemical and Radioactive Waste Cleanup Challenge Facing Missouri" from 7:30-9:30 p.m. in S203 Memorial Union.

10 Friday

CONTINUING LEGAL EDUCATION: "MAI-CR 3d-New and Revised Instructions" will be presented at the Ramada Inn, I-70 and Highway 63 North, Columbia. Cost: \$85. Call 882-7251.

AUCTION: The University will hold a warehouse auction at the South Farm, off of Highway 63 South. Call 882-5051 or 449-1231.

CPPC: "See Yourself As Others See You," practice job interviews, will be held at 1:40, 2:40 and 3:40 p.m. at the Career Planning and Placement Center, 110 Noyes Hall.

STAFF RECOGNITION AWARDS CEREMONY: Service awards and Staff Recognition awards will be presented at 2 p.m. in Jesse Aud. A reception will follow.

BLACK CULTURE CENTER: "Soul Video" will be presented at 6 p.m. at the Black Culture Center, 823 Virginia Ave.

MSA FILM: "Lady and the Tramp," rated G, will be shown at 7 and 9:30 p.m. in Ellis Aud. Cost: \$2.

UMC DANCERS IN CONCERT 1987: Event will be held at 8 p.m. in Jesse Aud. Cost: \$4. Tickets may be purchased April 6 through 10 at McKee Gym or at the door.

CLASSIFIEDS

FOR SALE
5 ACRES STATE ROAD FRONTAGE 8 mi. west of campus. 95% woods, 5% tillable, w/secluded southern exposure. No trailers. \$14,500, w/\$500 down. 449-5620 12-5 p.m. Mon.-Wed.; Thurs.-Sat. anytime.

400K EXTERNAL DRIVE for Macintosh 128K or 512K. Excellent condition. \$125. 449-5504 10 a.m. to 10 p.m. every day.

RENTALS
THREE-BEDROOM furnished house, air-conditioned, 10 minutes from campus. Rent negotiable. Available May 15 to Aug. 20 or part thereof. Call Naomi Ritter at 449-5886.

LAKE OZARK CONDO on waterfront on Horseshoe Bend for rent. Furnished, sleeps six, air, whirlpool, tennis, pool, boat docks. Reserve now for summer, \$350/week. (314) 445-6556.

CAR POOLS
BOONVILLE AREA persons to fill car pool. Will need to drive one day a week. Can work on campus or at the hospital. Call Marsha at (816) 882-2844.

SERVICES
LAWN MOWING, general spring clean-up and repair for yards or home. Call 874-8160 after 7 p.m.

WANTED
SUMMER WORK, taking care of your vacant home, by college junior. Available May 30-Aug. 28. For more information write to: OCMB 1674, Oberlin, Ohio 44074. Local phone (parents) 445-5147.

University Libraries
University of Missouri

Digitization Information Page

Local identifier MizzouWeekly(print)

Source information

Format Newspaper
Content type Text with images
Source ID Duplicate copies University Archives weeded out
Notes

Capture information

Date captured July-December, 2022
Scanner manufacturer Plustek OpticBook
Scanner model A300 Plus
Scanning system software Book Pavilion
Optical resolution 600 dpi
Color settings 8 bit grayscale for majority of pages;
 24 bit color for color illustrations/portraits/photographs
File types tiff
Notes

Derivatives - Access copy

Compression Tiff: LZW compression
Editing software Adobe Photoshop 2022
Resolution 600 dpi
Color same as captured
File types pdf created from tiffs
Notes Images cropped, straightened, and brightened.