

MIZZOU

W E E K L Y

University of Missouri-Columbia / April 3, 1990

ON THE INSIDE:

Our annual staff recognition issue honors award-winning employees, lists workers with various years of service and provides highlights of Staff Recognition Week April 9 through 13. Turn to Page 6 for further details.

Page 2 Vice Provost Jeff Chinn talks to Faculty Council about MU's guidelines on academic dishonesty.

Spotlight on staff

Special week features awards ceremony, research exhibits and crafts shows.

As the clock ticks down on Staff Recognition Week April 9 through 13, staff members from across campus are making sure all the bases are covered for the special observation.

"Staff Recognition Week is the most important week of the year for staff on the Columbia campus," says Jo Pflieger, administrative assistant in veterinary microbiology and chairwoman of Staff Advisory Council. "It is a time to show appreciation for the individuals who really make the University what it is — a great place to work. While our 'week

highlights special individuals, it also honors all staff who serve the University community in a variety of ways."

The week's highlight will be the ceremony at 2 p.m. April 9 in Jesse Auditorium, when Chancellor Haskell Monroe will honor the four winners of the \$1,000 recognition awards, funded through the MU Alumni Association. Recipients of the Mick Deaver Memorial Award and the Barbara S. Uehling Award for Academic Excellence will be honored.

The awards ceremony will kick off a week of activities. On April 10, Staff Advisory Council will sponsor a blood drive from 9 a.m. to 3 p.m. in the Memorial Union Lounge. Free fruit and vegetables will be provided by Campus Dining Services, and University Hospital will provide free cholesterol screenings and mammograms at a reduced rate.

An old-fashioned ice cream social will highlight noon-time events April 11 on Lowry Mall. In addition to free cones provided by Buck's Ice Cream, there will be a concert by Fem-Mini Mizzou and a chance to meet Mizzou athletes, Truman the Tiger and the Golden Girls.

On April 12, from 10 a.m. to 3 p.m. in the Jesse Hall lobby, there will be an exhibit of staff research projects. The week will close April 13 with an art, crafts and hobby show from 11 a.m. to 2 p.m. in the Memorial Union Lounge.

"The events of the week are the responsibility of the 16 members of the council, along with the many individuals

who volunteer their time and energy," Pflieger says. "It takes the hands of many individuals to make the week the success it always is."

Service award recipients should be at their designated areas in Jesse Hall no later than 1:30 p.m. the day of the ceremony. Five-year recipients will meet outside the Graduate School at the east end of the second floor in Jesse. Ten-year honorees will gather on the east end of the third floor, outside the elevator. The 15-year group will meet at the west end of the ground floor, outside the payroll office. Those being recognized for 20 or more years of service should gather in the west hall of the first floor no later than 1 p.m.

Lists of the award winners and the service award recipients follow.

40 YEARS

Cook, James Wallace, *Campus Facilities*

35 YEARS

Bryson, Wayne Charles, *Horticulture Farm*
Marshall, Billy Joe, *Warehouse Operations*
Maxwell, Lou Frances, *Campus Facilities*
McClatchey, Boyd Junior, *Surgery*

Turn to Page 6.

Offering a hand

Employee Assistance Program at MU helps workers with a wide variety of problems.

Pat Ives knows firsthand that Mizzou's Employee Assistance Program can make a difference. Ives, research and records manager in the Office of Development, says the program might have saved a life.

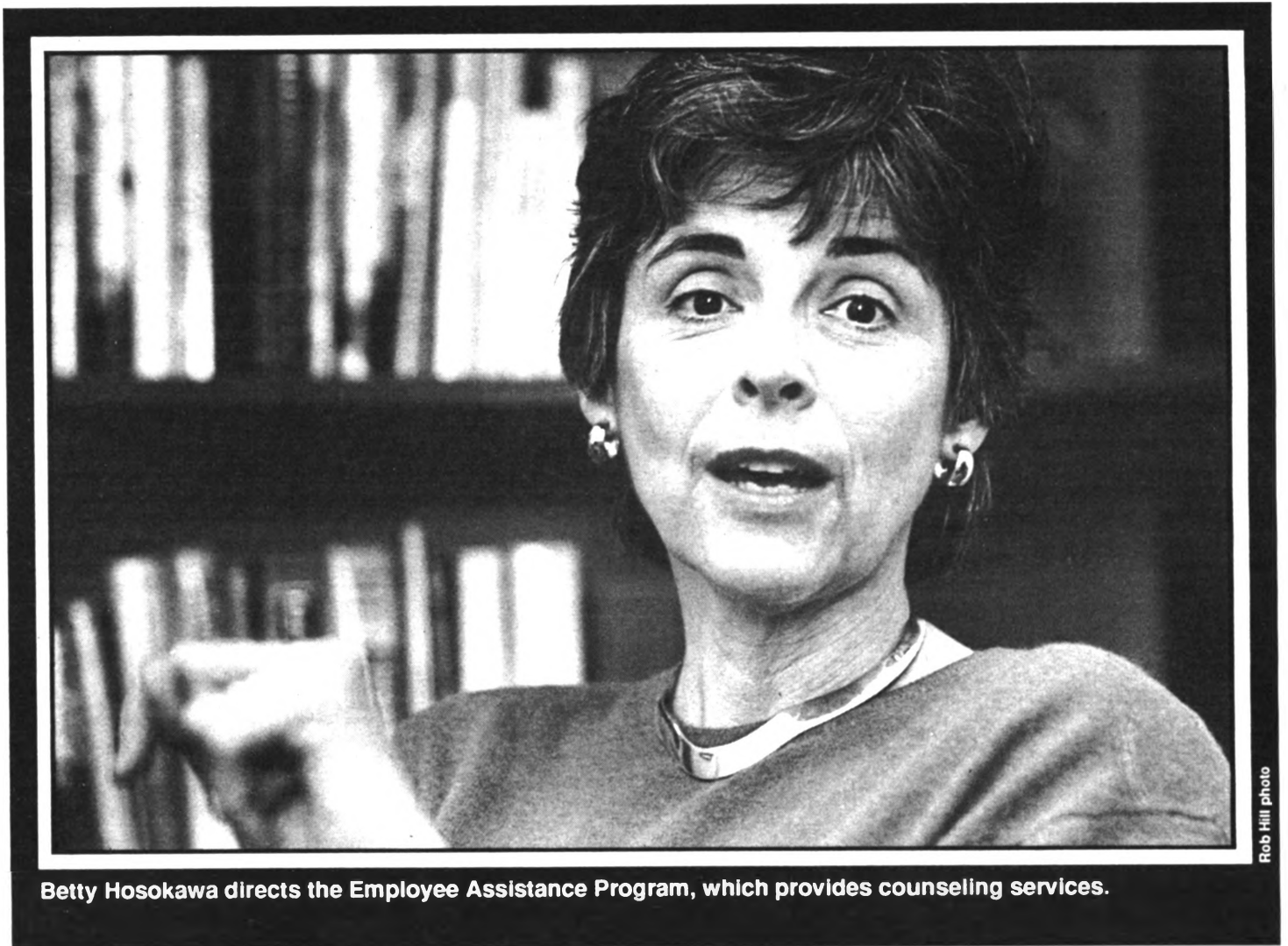
Several years ago, when she worked as a supervisor in another office, a troubled employee began to talk about suicide one day. Ives turned to the Employee Assistance Program for help.

"We were able to get that employee to counseling," Ives recalls. "As a manager you sometimes run into situations where you wonder how to deal with a problem and be fair to the University and fair to the employee. It's helpful to have someone with knowledge about personal issues and psychological problems."

The program is there to help workers with their problems, which don't necessarily have to be earthshaking. If staff or faculty want to quit smoking or just need help balancing a budget, staff at the employee assistance office can tell them where to find the answers.

Although supervisors and managers can refer employees with problems to the assistance program, the majority of its clients come in on their own. Program staff members talk to the workers, assess the problem and tell them where they can find help. The service is confidential and it's free.

"The program is designed to help valued employees who develop persistent problems that are interfering with their jobs or their personal lives," says Betty Hosokawa, who has been director of the program since 1982.



Betty Hosokawa directs the Employee Assistance Program, which provides counseling services.

"It has a focus of making people fully functional on the job."

She stresses that the program is for all faculty and staff on campus. Hosokawa says the majority of her clients come in with marital or family problems. Others need help fighting drug or alcohol dependencies. Each year, nearly 400 MU workers use the program.

"I think what is really important is that this kind of program is an early intervention program," Hosokawa says. "People think of the program in connection with alcohol abuse or emotional problems, but we make refer-

als for all kinds of things — consumer issues, legal concerns, credit or budget counseling."

Mizzou's program has been a pioneer in the higher education community. When it began in 1975, there were only two similar programs at colleges and universities in the nation. Since then, the program has sponsored six national conferences and has provided the know-how to help more than 150 other campuses start their own programs.

That national influence was acknowledged recently when Employee Assistance Programs in Higher Education honored Mizzou

for its "leadership and vision" in the field.

"I guess it's kind of a 'thank you,'" Hosokawa says of the award. "We still do a lot of consultation with other institutions."

The people at MU who have used the program are grateful that it's available. Pamela Skeene, an assistant supervisor in Campus Facilities, has referred workers to Hosokawa for assistance. "Sometimes people just need an outside person to give them a more objective point of view," Skeene says. "I think MU is a very caring institution. I think we have an obligation to help our people when we can."

FRESH EGGS FOR SALE

The Animal Sciences Department has an eggs-citing deal for you. The department is selling Grade A fresh eggs at its sales room, just south of Building T-14 at College Avenue and Hospital Drive. Hours are 4 to 5:15 p.m. Wednesdays and Fridays, and parking is available. Prices vary, but a special price of \$1 per flat (2 1/2 dozen) of medium-sized eggs is in effect.

SUMMER FUN CAMP REGISTRATION OPENS

Registration has opened for the Recreation/Intramurals Department's first summer recreational sports and leisure activities camp. Children of faculty and staff are invited to participate. The camp is open to boys and girls ages 7 through 12, and the cost is \$110. There will be three sessions: June 11 through 22; June 25 through July 6; and July 9 through 20. The camp will be in and around the Student Recreation Center from 8:45 a.m. to 4 p.m. Mondays through Fridays. Extended hours will be available to faculty and staff who wish to drop off their children on their way to work and pick them up

on their way home. The fun camp is designed to be non-competitive. A variety of sports, including swimming, volleyball and tennis, will be offered, along with arts and crafts. Registration is being taken in 106 Rothwell. With questions or to obtain a brochure, call 882-2066.



HISTORY STUDENTS TO SEE CAMPUS

More than 1,000 junior high and high-school students in the state, along with their teachers, will be on campus April 7 for History Day in Missouri. The annual project, sponsored by MU and the State Historical Society of Missouri, encourages students to research and prepare papers, projects, performances and media entries related to specific themes. This year's theme is "Science and Technology in History." Students will present their projects during the day in the Arts and Science Building and General Classroom Building. The awards ceremony will be at 5 p.m. in Jesse

Auditorium. Three special \$100 prizes will be given: the American Association of University Women award, for the best entry on women in history; the Arvahr Strickland award, for the best entry on black history; and the Missouri Historical Society of St. Louis award, for the best entry with a St. Louis connection. Faculty and staff are welcome to attend any of the events.



Dishonesty concerns MU

While Mizzou officials may not feel comfortable suspending students for academic dishonesty, the University must deal with this serious problem, Vice Provost Jeff Chinn told Faculty Council March 29. "I may spend only 5 percent of my time dealing with these students, but it causes me to lose 95 percent of the sleep that I lose," Chinn said. "This is a very, very important matter."

Chinn said the council's student affairs committee had asked him to discuss the way academic dishonesty is handled at the University. He said his guidelines generally result in academic probation for most situations involving freshmen; suspension from the University for a semester to a year for sophomores, juniors and seniors; and expulsion for graduate students. These consequences are applied only in cases where academic dishonesty can be proven, Chinn added.

"But the guidelines are only a starting point," he said. "The seriousness of the offense also helps determine the punishment." Following the presentation, the council voted to support the guidelines. The council also voted to support a resolution which urges the Office of Student Affairs "to work with and support social fraternities and sororities in efforts to assure that University recruitment and retention goals be reflected in the organizations' own recruitment policies and memberships." Russell Zguta, professor and chairman of history and chairman of the student affairs

committee, said the resolution is designed to encourage more recruitment of minorities by the Greek system. The council also voted to create a task force on teaching evaluation, which could determine, among other things, how faculty feel about current evaluation methods and any suggestions for improvement. Erik Fritzell, professor of fisheries and wildlife and chairman of the council's faculty affairs committee, proposed the idea of a task force. "Now we just need the members for it," he said. Faculty interested in serving may contact their council representative.

Assessment event set April 9

MU faculty members from a variety of disciplines will participate in a mini-conference on assessment from 9 a.m. to 3 p.m. April 9 in N208 Memorial Union. Last year, MU's assessment task force made several small awards to faculty to pursue research projects focusing on assessment. The results of that research will be discussed at the mini-conference. "Assessment in the Languages" will be presented from 9 to 10 a.m. Speakers will be Mary Brodnax, assistant professor of German; Gene Barabtarlo, assistant professor of Russian; and Ben Honeycutt and Mary Jo

Muratore, associate professors of romance languages. "Using Standardized Evaluations" will be presented from 10:15 to 11:30 a.m. Speakers will be Whitney Hicks, professor of economics; Allen Bluedorn, associate professor of management; Barbara Biehler, assistant professor of nursing; and Rosemary Hogan, clinical instructor in health related professions. "Assessment for Curricular Improvement" will be presented from 12:40 to 1:40 p.m. Speakers will be William Benoit, assistant professor of communication; Gail Gates,

assistant professor of human nutrition and foods; and Ronald Phillips, assistant professor of environmental design. "Using Student Feedback in the Curriculum" will be presented from 2 to 3 p.m. Speakers will be Wendy Sims and Martin Bergee, assistant professors of music; Joel

Breton, associate professor of religious studies; Mary Bixby, assistant professor of curriculum and instruction; and Dorothy Watson, professor of curriculum and instruction. Faculty and staff are invited to the event.

Variety of events scheduled for Education Week

The creator of the "Dick and Jane" reading series and the principal of Columbia's West Junior High School will be among the speakers for events at MU's Education Week this week. A. Sieryl Artley, who created the "Dick and Jane" series, will speak at 2:40 p.m. April 3 in Townsend Auditorium. Also speaking in Townsend Auditorium during the week will be Muriel Battle, principal of West Junior High, and Columbia police officer Wendell Mitchell, on "Facing Drugs in the Class-

room: A Teacher's Job," at 2:40 p.m. April 4; and Mary Jo Westwood and Jamy Preul of the Columbia Adult Learning Center, on Project Literacy U.S., at 9:40 a.m. April 5. A panel discussion, "Effective Classroom Management and Discipline," will be at 4:30 p.m. April 4 in Townsend Auditorium, and a presentation, "Satanism in the Public Schools," will be at 9 a.m. April 7 in 309 Hill Hall. Faculty, staff and students in the College of Education may vote from 10 a.m. to 2 p.m. April 3 and 4 in 103 Townsend for the outstanding teacher, adviser, staff person, student and student council representatives. Winners will be announced at a reception at 3:40 p.m. April 5 in N214-215 Memorial Union.

MU department a host for annual classics meeting

The Department of Classical Studies will be the host for the 86th annual meeting of the Classical Association of Middle West and South. The meeting will be April 4 through 7 at the Holiday Inn Executive Center, I-70 and Stadium Boulevard. The four-day event is being held in Columbia for the first time and will attract nearly 400 classical scholars from across the country. Presentations from distinguished scholars in the classics field include: "Odysseus and the Glorification of Labor in the Odyssey," "Something about Nothing in Sophocles' Electra," and "Classics for the Masses." The association, which is the largest regional association of classicists in the country, includes Greek and Latin language teachers from high schools and colleges.

In conjunction with the convention, the Museum of Art and Archaeology will arrange a special exhibit of items from its classical collection. Additionally, there will be a related exhibit in Ellis Library. Eugene N. Lane, MU professor of classical studies, is the conference organizer.



Vol. 11 No. 26
A publication of the University of Missouri-Columbia faculty and staff, published every Tuesday during the academic year and twice a month during the summer by Publications and Alumni Communication, a department of Development, University and Alumni Relations Division, 1100 University Place, 882-7357. News deadline is noon Tuesday the week before publication. Annual subscriptions are available for \$10.

Editor: Terry Jordan
Assistant editor: John Beahler
Staff writer: Sue Richardson
Advertising coordinator: Michelle Burke
Graphic editor: Nancy Daniel

Open Informal Discussion to discuss the new

CONFLICT OF INTEREST POLICY

April 13, 1990
1:30-3:30 p.m.

Townsend Auditorium

DISCUSSION LEADERS

Mark Burkholder
Vice President for Academic Affairs,

Kate Markie
University Counsel

Emmett Klinkerman
Director of Purchasing & Real Estate for University System.

MU CAMPUS ADMINISTRATORS ATTENDING

Gerald Brouder
Deputy Chancellor

Jackie Jones
Business Officer

Mark Price
Grants & Contracts office.

Anyone interested in the topic is welcome to attend.

NEW SERVICE AT HOSPITAL

With the arrival of the Perry Sigma II hyperbaric medicine chamber, University Hospital is the first facility in mid-Missouri to offer a service administering high levels of oxygen.

The therapy is used to treat burns and non-healing wounds. The patient breathes oxygen through a hood while surrounded by elevated air pressure in the chamber. This increases oxygen dissolved in the blood plasma by 10 to 15 times and increases oxygen to tissues.

MASTER PLAN HEARINGS TODAY

If you missed the first hearing on the Campus Master Plan, at noon today in the Memorial Union Auditorium, don't worry — there are two more later in the day.

The other meetings are at 4:30 and 7 p.m. in 7 Law Building. There will be a slide show on the history of the development of the campus, and MU officials will answer questions about current concerns and plans for the future.



PHONE 'EXTRAS' COSTING MORE

Your department's telephone system may not have such extras as business lines (non-882 and -884 numbers) and pay phones. But if it does, your bill is going up.

Beverly Blackwell, manager of Telecommunications, says GTE received approval March 1 to increase specific monthly rates. "Even though the increases affect very few University users, some departments may see changes on their billing," she adds.

Monthly business-line service, for instance, has risen from \$14.10 to \$14.40. Pay-phone service has gone from \$10.05 to \$18, and alternate call listings are \$2.30, up from \$1.90. The

biggest jump is in the first one-fourth mile of off-premise station mileage, which has risen from 90 cents to \$5.15.

With questions, call Telecommunications at 882-5800.



SLUG 'EM WITH BEER

Try a beer bath to take a slug at the slugs in your garden.

Use a shallow pan buried to soil level filled with beer, or a mixture of one tablespoon of sugar and one package of baking yeast in one or two cups of warm water. The fermentation attracts the slugs, which fall into the pan and drown.

"Slugs can be a serious problem, especially during the rainy season," says Ray Rothenberger, professor of horticulture. "They eat a lot of living organic matter, including plants."

Grad students to show work at forum April 7

Faculty and professionals from across the country will serve as judges in the Graduate Professional Council's seventh annual Research and Creative Activities Forum, scheduled April 7 at Memorial Union.

The all-day event gives graduate and professional students at MU the chance to present their research work or creative endeavors. Judges will critique the presentations in nine divisions, and cash prizes of \$350, \$150 and \$50 will be awarded to the three best presentations in each division.

The GPC represents students in the Graduate School, the School of Medicine, the School of Law and the College of Veterinary

Medicine. Also sponsoring the event are the Office of the Provost, the Graduate School, Phi Kappa Phi and the Society of the Sigma Xi. The forum is the CPC's biggest event.

"This program is organized and run completely by students for students," says Debbie Spiess, programming vice president for the GPC. "We invite everyone to attend this showcase of the excellent work done by graduate and professional students from across the campus."

Provost Lois DeFleur will give the opening address at 8:20 a.m. in N222-223 Memorial Union. Divisional sessions will be in the Union, Gwynn Hall and the Bingham Gallery in the Fine Arts Building, beginning at 9 a.m. and continuing through the afternoon. An awards ceremony will be at 4:30 p.m. in the gallery.

"This is a wonderful opportunity to exchange ideas and to provide recognition for a job well done," Spiess says.

CLASSIFIEDS

FOR SALE

LOTUS six-string acoustical guitar and case. Like new. \$100. Also, Sharp portable typewriter. Two-page memory with full editing capability, two-line display, case. Like new. \$150. 874-1036 after 5:30 p.m.

'84 OLDS 98 Regency, midnight metallic blue with velvet interior. Loaded with options! Always garaged, babied to 100,000 miles. Must see and drive! \$6,000 firm. 445-6483.

KING-SIZE "Softside" dual-control Hydrotec waterbed with dark-oak "cannonball" headboard. \$500. 445-6483.

TWO-BEDROOM condominium in nice

older building near campus. Central air, nearly new stove, refrigerator, and carpeting in living and dining rooms. 445-0566.

FIVE-ACRE HOME SITES: Woods and/or meadow, southern exposures, 4 miles southwest. \$14,000 & up, w/\$1,000 down, remainder over 10 years. All underground utilities; no trailers. 449-5620 before 6 p.m.

The Classified Advertising Section is open only to faculty and staff members. A home phone number is required in all classified ads.

Ads must be typed.

Rates: 30-word maximum \$3.

Publication deadlines:

April 6 for April 17

April 13 for April 24

Mizzou Weekly Classifieds: Make your check payable to University of Missouri and send to: Mizzou Weekly, 1100 University Place, Attention: Michelle Burke.

Parking group hears complaints about garage

The University will study the cost of covering ramps at the University Avenue garage to protect them from ice and snow, the parking and transportation committee was told March 7.

"I believe a study is needed," Kee Groshong, vice chancellor of Administrative Services, told the group. "This is a legitimate concern."

The subject was one of several concerns raised by the History Department and discussed by the committee in regard to the University Avenue garage. Russell Zguta, professor and chairman of history, listed the concerns in a letter to Groshong.

"The current system of assigning parking spaces in the University Avenue garage results in many drivers having to park in uncovered spaces, while University and government vehicles occupy prime interior parking places," Zguta wrote. "This is particularly difficult in times of snow and ice, when the only space vacant is on the sloping ramps to the roof.

"When the ground crews do not salt these ramps — as they did not do on the morning of Dec. 11, 1989 — walking down such slopes is difficult, even hazardous."

Groshong acknowledged that the ramps were not salted that morning, and said crews would be more attentive in the future. But the committee did not agree with a suggestion by Zguta that two classes of parking permits be introduced, for covered and uncovered parking spaces in the garage, each with its own fee structure.

"What would happen if you had a permit for an uncovered spot and they were all full?" asked Jim Joy, director of Parking and Transportation Services. "Would that allow you to park in a covered spot? If so, wouldn't you be

taking it away from someone who had a permit for that spot?"

Other concerns raised by the History Department included:

- the number and placement of University and government-owned vehicles, most of which occupy ground-floor spaces in the garage. "On some days their number is astonishingly large," Zguta wrote. "If they are to be allowed space, they should be required to park only in uncovered space." Groshong said Parking and Transportation Services will examine whether some of those vehicles can be moved. "Those vehicles do not all park there free," he stressed. "Many of them come through the Agronomy Department, and they pay for permits like anyone else."

- the issuance of temporary visitor permits for the garage. Zguta urged the practice be prohibited during the fall and winter semesters. The committee disagreed. "That would not be feasible," said Don Graham, associate director of Residential Life and an ex-officio member of the committee. "It's important to our mission to have parking available to visitors."

- a suggestion that MU announce and advertise a policy of towing vehicles parked illegally. The committee said that is being done now. "I don't know what else we could do," Joy said. "We tow 1,500 cars a year."

A REMINDER

The Mizzou Weekly news deadline is Tuesday, one week before publication. Please let us know about your upcoming event as soon as possible so we may include it in our Calendar.

University Club presents

THE MU PROGRAM FOR EXCELLENCE IN TEACHING

with

Director Diane vom Saal, Ph.D.

Luncheon

Thursday, April 5

11:40 a.m.

MU Alumni Center

Reservations at \$6 per person should be made by noon on April 4.

and

A Fine Arts Evening

Saturday, April 28

Dinner at 6 p.m. in the Hawthorn Room

Biloxi Blues at 8 p.m. in Rhynsburger Theatre

Reservations at \$14 per person should be made by April 16.

Please contact Carol Petross at 882-4523 for reservations. All members of the University community are welcome.



Staff photo

Chancellor Haskell Monroe and members of his staff present personal contributions to MU-PAC officials, David Leuthold, professor of political science, far right, and Allen Hahn, professor of veterinary medicine and surgery, right. The committee was formed last year to assist higher education in Missouri in general and the University in particular. Contributors are, from left: Athletic Director Dick Tamburo; Provost Lois DeFleur; Deputy Chancellor Gerald Brouder; Kee Groshong, vice chancellor for Administrative Services; Dave McIntire, vice chancellor for Student Affairs; Roger Gafke, vice chancellor for Development, University and Alumni Relations; and Monroe.

ANNOUNCING
MU Recreation/Intramural Department's
NEW
Recreational Sports
&
Leisure Activities Camp

For: Boys & Girls, 7 - 12 years old

Cost: \$110

Where: Student Recreation Center

Time: 8:45 a.m. - 4:00 p.m. Monday - Friday
 (Extended Care Option: 7:15 - 8:45 a.m. and/or
 4:00 - 5:30 p.m. - Extra Charge)

Dates (3 Sessions)

Session I - June 11 - June 22

Session II - June 25 - July 6 (No Camp July 4)

Session III - July 9 - July 20

Registration Deadline: Monday, May 7

For More Information: Curt or Diane, 882-2066



Where Everyone's a Winner

MU Recreation/Intramurals 106 Rothwell Gym 882-2066 OSD

Q&A

Q. I am a retiree who began receiving Mizzou Weekly free by mail last fall. I enjoy reading it. But many times my copy does not arrive until Friday or Saturday, and by that time many of the events listed in the Calendar have passed. Can anything be done about this?

A. Terry Jordan, editor of Mizzou Weekly, says this is a dilemma for which there is no ideal solution. "We've received several questions about this from retirees, so the writer is not alone in his concern," he says.

Jordan notes that Mizzou Weekly is distributed on campus on Tuesdays, and the Calendar covers the time from one issue to the next. "Space limitations prevent us from listing more than seven days in the Calendar," he says. And the reason retirees receive Mizzou Weekly later in the week is because it is mailed third-class. "We'd love to mail it first class, but our budget does not allow for that," he says.

Jordan suggests that retirees save the Mizzou Weekly semester calendars — which are published in August, January and June — to keep abreast of major campus events. Also, retirees are welcome to drop by the Mizzou Weekly office at 1100 University Place on Tuesdays to pick up a copy.

The free mailing began last fall and primarily is designed to keep retirees informed of benefits and other matters. As an example, the March 27 issue included three stories pertinent to retirees: the formation of a retiree association, a call for nominations for Retiree of the Year Awards, and information on benefit claims. "In spite of the dilemma with the Calendar, we believe there are good reasons for retirees to read Mizzou Weekly," Jordan adds.

Q. The Heinkel Building does not have

any place for employees to have a break period or to get away from their desk to eat lunch. Several of us have wondered why the space on the ground floor, where two vending machines are located, could not be used as a break area. Currently, there is a counter in that area that is not being used and a space behind the counter that is also unused. If they were removed, there would be room for a few tables and chairs. I realize this would not be a large amount of space, but it certainly would be better than we have now, which is no room at all. Also, why not install another vending machine with healthier foods and snacks?

A. While there is not a room specifically designated as a lounge in the Heinkel Building, there are three areas where employees can get away from their desks for a break or to eat lunch, says Mary Stampley, business and fiscal operations manager in Campus Computing, which is located in the Heinkel Building. On the ground floor, a table and chairs have been placed in the mechanical room. Smoking is permitted in this area. In addition, there are two rooms on the west side of the building next to the stairs, one on the first floor and the other on the second floor. These rooms have been equipped with a microwave, refrigerator and several chairs. Smoking is not permitted in these two areas.

Vending machines are installed by Central Food Stores, and that department determines the contents of the machines. Stampley says Central Food Stores has indicated that before installing a vending machine with more health foods and snacks, there would first have to be a survey of who would use this type of vending machine, and how often. Because those items are extremely perishable, vending machines of this type are expensive. The experience has been that vendors throw away more food from these machines than is sold. Because the Heinkel Building is so close to downtown eating establishments, Central Food Stores says this type of vending machine would not prove profitable.

Curators discuss options facing higher education

The curators of the University of Missouri System should seize the "unique opportunity" to participate in the review of higher education currently under way by a state-appointed commission, Curator Webb Gilmore told his colleagues at a board meeting March 23 in St. Louis.

Gilmore made his comments during a discussion about the Missouri Business and Education Partnership Commission, a group appointed by the governor and General Assembly to study Missouri's system of higher education.

"We have a unique opportunity and, in my opinion, a responsibility to participate in this statewide planning process," Gilmore said. The Kansas City lawyer outlined four choices for statewide governance that could be considered by the commission:

- continue the status quo. This means the Coordinating Board for Higher Education, the UM System curators and the separate governing boards of the nine other four-year public institutions would all retain their cur-

rent duties.

- continue with the present structure, but give the CBHE additional powers over institutional missions and the elimination of degree programs.

- create a second system involving the four-year schools that are not part of the UM System. This would give the state the CBHE and two governing boards for four-year institutions.

- establish a one-board system, which would combine the governance and coordinating functions of the CBHE and the 10 separate institutional governing boards.

UM System President C. Peter Magrath and several curators agreed that the board should monitor the progress of and cooperate with the commission. No action was taken on specific recommendations.

In another matter, curators approved the name Carrie Francke Drive for a road leading to University Hall, the Alumni Center and A.L. Gustin Golf Course. Francke, a Columbia attorney who had four degrees from MU, was serving on the board when she was killed in a car accident last May. Curators also were told the University System has received about \$21 million in private gifts through the first eight months of fiscal 1990. Gift receipts are \$1.8 million more than they were at this time last year.

Grant designed to aid day care

Handicapped youngsters often have trouble fitting in at child-care centers because most day-care providers aren't trained to work with them.

Creators of a new program at Mizzou hope to smooth that integration. A \$364,823 grant from the U.S. Department of Education recently helped establish "Missouri — TIKES," which stands for Training Individuals to Care for Exceptional Students. The program's goal is to teach day-care personnel about child development, with an emphasis on adapting environments and activities for handicapped preschoolers.

By 1995 an estimated two-thirds of all children under 6 years old will have mothers in the labor force, creating a greater demand for outside child care, including that of handi-

capped youngsters. Part of Missouri — TIKES' focus is to prepare day-care workers to foster interaction between special-needs children and their normally developing peers.

"Research has shown that unless non-handicapped children have experience with handicapped kids, they do not socialize readily," says Ron Gillam, assistant professor of communicative disorders at the School of Health Related Professions and the program's co-director. "The suggestion is that integrating these groups when they're very young should have payoffs later on during the school years."

The project staff includes seven faculty members from the College of Education, School of Health Related Professions and College of Human Environmental Sciences. Bob Busch, professor of special education, serves as director. Shirley Patterson, clinical instructor of communicative disorders, is the project's in-service coordinator.

Staff Recognition Week '90

MU Strong Tradition And Foundation for the Future

University of Missouri-Columbia April 9-13

A week of programs and activities for staff in recognition of service to the University. Programs are free, and ALL STAFF ARE ENCOURAGED TO ATTEND.

STAFF RECOGNITION CEREMONIES

Monday, April 9, 1990 2 to 4 p.m.
Jesse Hall Auditorium

Chancellor Haskell Monroe will present the four \$1,000 Staff Recognition Awards to one member of each subgroup: Administrative/Professional, Crafts/Maintenance, Secretarial/Clerical and Technical/Paraprofessional. Shawn Deaver will present the Mick Deaver Award that honors his late father. Jo Pflieger, Staff Advisory Council chairwoman, will present the Barbara S. Uehling Award. Staff with 20, 25, 30 and 35 years of service will receive individual certificates. Staff with 5, 10 or 15 years of service to the University will be recognized. Refreshments will be served following the ceremony.

Special thanks to Lane's Greenhouse for providing flowers for the awards ceremony.

TUESDAY, APRIL 10 Red Cross Blood Drive

9 a.m. to 3 p.m.
Student Lounge, Memorial Union
A blood drive is being sponsored by the Staff Advisory Council. There will also be free cholesterol screenings by University Hospital, free fruit and vegetables from Campus Dining Services and tours of University Hospital's mobile mammography clinic. Mammogram screenings will be offered at the reduced rate of \$65.

WEDNESDAY, APRIL 11 MU Staff "Let Us Entertain You"

Noon to 1 p.m.
Lowry Mall
(In case of inclement weather - Jesse Auditorium)
A free concert by Fem-Mini Mizzou, directed by Norman T. Reubling. Meet Mizzou Tiger athletes, Truman the Tiger and the

Golden Girls. Enjoy free ice cream cones from Buck's Ice Cream, compliments of the Staff Advisory Council.

THURSDAY, APRIL 12 Research-Project Exhibit

10 a.m. to 3 p.m.
Jesse Hall Auditorium Lobby and Corridors
An exhibit of projects and research conducted by staff members from all corners of the campus. Come and see what your colleagues are doing in the way of research.

FRIDAY, APRIL 13 Art, Craft and Hobby Show

11 a.m. to 2 p.m.
Student Lounge, Memorial Union
Take a stroll through a display of art work, crafts and hobbies created by your co-workers. Certificates of recognition will be presented to each participant in the display.

Liebeslieder Walzer

Lovesong Waltzes by Johannes Brahms as the

Spring Concert

Presented by the MU Department of Music
University Choral Union

Gregory Fuller, conductor

University Symphonic Wind Ensemble

Dale Lonis, conductor

Howard Helvey & Douglas Friesen, pianists

8 p.m., Friday, April 6, Jesse Auditorium

\$3 Admission at the Door

Also Featured on the Program

Celebrations..... Vincent Persichetti

Tantivy.....David Diamond

(world premiere)



An event of the School of Fine Arts Performing & Visual Arts Series
Co-sponsored by the MU Department of Music and Commerce Bank.

Continued from Page 1.

McQuitty, Donald, *Radiology*
 Morris, Bobby Lee, *Campus Facilities*
 Smith, Vance H. Jr., *Facilities Design & Development*
 Wappel, Fred A., *Intercollegiate Athletics*
 Willis, Thelma June, *Library*
 Wren, Donnie Leo, *Printing Services*

30 YEARS

Allen, Anna Louise, *Campus Facilities*
 Allen, Louis, *Campus Facilities*
 Blythe, Venetia Elgin, *Nursing Rehabilitation X (Rusk 4) Float*
 Bowser, Jerry Ray, *Campus Facilities*
 Brown, Floyd, *Memorial Union/Brady Commons*
 Clark, Sandra Sue, *School of Natural Resources*
 Cunningham, James Larry, *Animal Science*
 Davis, Wanda Arlene, *Cashier/Payroll/Student Loans*
 Edwards, Oleta L., *Library*
 Hill, Donald, *Campus Dining Services*
 Kelley, Lena Pearl, *Sterile Processing*
 Kemper, Billie Dale, *Campus Dining Services*
 Kite, Gene Dale, *Campus Facilities*
 Maddox, Guy Eugene, *Procurement/Materials Management*

Mansfield, Wanda L., *Nursing NICU - Float*
 Maxwell, Charles Edwin, *Multipurpose Auditorium*
 Patrick, Reginald C., *Police*
 Robnett, James O., *Campus Facilities*
 Rybolt, Paul Lester, *Campus Mail Service Facility*
 Smith, Mary Ruth, *Animal Science*
 Sontag, Harold Dean, *Campus Facilities*
 Thompson, Donald D., *Pathology*
 Williams, Marjorie D., *Nursing - Maternal Child Administration*
 Willis, Bobby Lee, *Clinical Engineering*
 Wilson, Harry L., *TV Station*
 Winn, Jack D., *Student Development*
 Woods, Shirley Anne, *Nursing - Clinical Support Services*

25 YEARS

Baldwin, Carol Anita, *Dean of Engineering*
 Birmingham, Barbara, *Campus Dining Services*
 Brewen, Aline E., *Campus Dining Services*
 Bruce, Carol Jean, *Biological Sciences*
 Cook, Ernest Henry, *Residential Life*
 Cropp, Patsy Sue, *Campus Dining Services*
 Crowley, Betty Elaine, *Atmospheric Science*
 Davenport, Howard Lee, *Campus Facilities*
 Dehaven, Jerry Wayne, *Campus Facilities*

Easley, Linda Jean, *Campus Facilities*
 Eubanks, Janice Lee, *Residential Life*
 Fewell, Susan L., *Registrar & Director of Admissions*
 Ganaway, Chester Dean, *Mail Room*
 Gardner, Willie Lee, *Pathology*
 Garrett, Shirley Dean, *Multipurpose Auditorium*
 Gibbs, James Robert, *Campus Facilities*
 Ginn, Ruby Ann, *Residential Life*
 Gruber, Everett Dale, *Residential Life*
 Hicks, Frances Lenora, *Campus Dining Services*
 Jefferson, Jeanette, *Women's Health Services*
 Kelly, John R., *Campus Facilities*
 Kenyon, Norma Ellen, *Computer Science*
 King, Evelyn Lucille, *Food Services*
 Kreutzer, Merlin Dale, *Residential Life*
 Law, Brevard J., *Vice Provost Extension*
 Liddell, Lucy Lee, *Residential Life*
 Loyd, James Clarence, *Facilities Design & Development*
 McBride, Sherley Ann, *Surgery Clinic*
 Mockbee, Jerry Gilbert, *Printing Services*
 Murray, Charles L., *Campus Facilities*
 Nevins, Emma Mae, *Library*
 Nichols, Riley Morris, *Campus Facilities*

Turn to page 10.



Staff Advisory Council

WORKING FOR YOU

MU Staff Advisory Council

congratulates the nominees considered for the Chancellor's 1990 Outstanding Staff Awards.

Technical/Paraprofessional Category

Ann Childers	Cynthia Jefferson	Randall J. Sapp
Emily Frisch	Linda McPherson	Ken Spencer
Robert Heinz	Clifford Mongler	Randy Stone

Crafts/Maintenance Category

Ethel Mae Anderson	Barbara Keith	Wayne Shoemaker
John Burks	Lucy Liddell	Martha Smith
Stanley Freeman	Lou Frances Maxwell	Robert Stapleton
Paula Hayes	Carl F. Roettgen	Ted Turner
Karin Hirschinger		

Secretarial/Clerical Category

Patricia Acton	Dan Kerner	Leah E. Sanders
Cathy Asbury	Lisa Landrum	Karen Sayre
Margaret Berends	Barbara Long	Mary Smith
Jane Buckler	Megan Martin	Mary Tarwater
Janice Craig	Doris Mayuiers	Nancy Taube
Evelyn Gallup	Clayton Pickens	Virginia Tennill
Evelyn Harned	Joyce Reinbott	Lois Tolson
Connie Howard	Judy Renner	Debbie Williams
JoAnn Jones		

Administrative/Professional Category

Susan Bieri	Ron Howren	Rebecca Payne
Alan Bigger	Leonard Johnsen	Mark Poore
Cody Buscher	Melba M. Kelly-Gordon	Gene Ravenscraft
Angela Carmichael	Julaine R. Kiehn	Beverly Sapp
Linda C. Cook	Evelyn Lindell	Judy Schulz
Kim Dude	Drew Love	Dana J. Scroggs
Nancy Dykstra	Marjorie Marberry	Maydell Senn
Cindy Elder	Jill A. Marchand	Laverne Shelley
Jackie Earl England	Carol Martin	John Shopland
Donald Gerlach	Brent Mattox	Harold Sontag
Harriett Green-Sappington	Sandy McCurdy	Barbara Staiger
Judy A. Grundler	Kathy Mertzluft	Bill Stetzel
Pamela Hall	Mary Ellen Metzen	Pamela Thorne
Ardyth Jean Hanson "Ardy"	Emily Meyers	Laura Toy
Ronald L. Haffey	Libby Miederhoff	Larry Wilson
Mary L. Hayes	Harri Palmer	Larry Windmoeller
George Hough		

Mick Deaver Award Nominees

Kim Dude	Jim Robinson	Dale Wilcox
Melba Kelly-Gordon	Martha Sue Smith	

Barbara S. Uehling Award Nominees

G. M. Chippendale	Roger L. Mitchell	Bruce Piringier
Marvin Lewis	Richard J. Otto	Alan Warden
Paul Marki		

Special thanks to the readers and interviewers who assisted in the selection process.

LETTERS

Dear Colleagues:

In recent years, the coming of spring to this campus has been marked by a series of activities to recognize outstanding members of the MU staff. This year, we will celebrate Staff Recognition Week from April 9 through 13. We will join in giving recognition to the fine achievements of our more than 6,000 administrative, service and support staff at Mizzou who do so much to make this such a fine place.

A calendar of events for the week has been distributed across campus. I encourage

each member of the University community to participate in as many programs as possible.

The awards ceremony is scheduled for 2 to 4 p.m. Monday, April 9, in Jesse Auditorium, and I hope you will join in honoring these excellent colleagues. Four staff members will receive Staff Recognition Awards, having been chosen by their peers for outstanding service to the University. In addition, two staff members will receive meritorious awards recognizing their particular contribution to the campus. A reception in Jesse Hall will follow the ceremony.

I look forward to seeing you all at the ceremony.

Haskell Monroe
 Chancellor

Printing Services

Open Monday thru Friday 7:30 am to 4:30 pm



University of Missouri
 Columbia

Staffed by University employees with many years of expertise, our printing professionals want to provide you with the best possible service and products.

- Typesetting facilities (plus we can read most disks and capture your keystrokes)
- Complete paste-up and graphic design service
- Eleven Xerox 9500 copiers for fast Quick Copy turnaround of your work
- Single through 4-color process printing on quality offset presses
- Full bindery capabilities (including perfect binding)
- Labeling and mailing service
- And experienced Customer Service Representatives to make this all work for YOU!

More than a print shop, Printing Services is part of your University. Let us help you with your next project.

PRINTING SERVICES
 417 South 5th Street
 882-7801



Dale Wilcox

Mick Deaver Memorial Award

The honorary award, established in 1980 by Staff Advisory Council, recognizes a staff member who exemplifies the late University Police major's concern for fostering good relations with students. Deaver, a 1966 graduate of MU, was associate director of University Police at the time of his death in an automobile accident in 1980.

Adding a personal touch

When students in the College of Arts and Science run into problems with their academic schedules, Dale Wilcox is the person who helps them. Wilcox, coordinator of student services and records at the college, is the 1990 recipient of the Mick Deaver Memorial Award.

The news that he had won the award came as a shock to Wilcox. "I thought it was a joke," he says. But his co-workers who nominated him weren't joking about Wilcox's dedication to his job or the personal touch he brings to advising students.

And Wilcox sees a lot of students. Each year approximately 1,000 undergraduates in arts and science talk over their class schedules and degree requirements with Wilcox. Sometimes he has to tell them things they don't want to hear. "One of the most difficult parts of this job is having to say 'no' so often," he says.

Helping students down the road to graduation is important to Wilcox. "This university is so large that sometimes students have a tendency to get lost, or they don't know

where to go for information," he says.

Finding that information can be challenging, but Wilcox says it's the most rewarding part of his work. "The best thing about this job are the students," he says. "They keep you on your toes. They're the ones who keep you thinking ahead. It's always a new question."

Another big challenge is keeping abreast of a bewildering array of rules, regulations and degree requirements that are constantly changing. "That may be the hardest part of the job," he says.

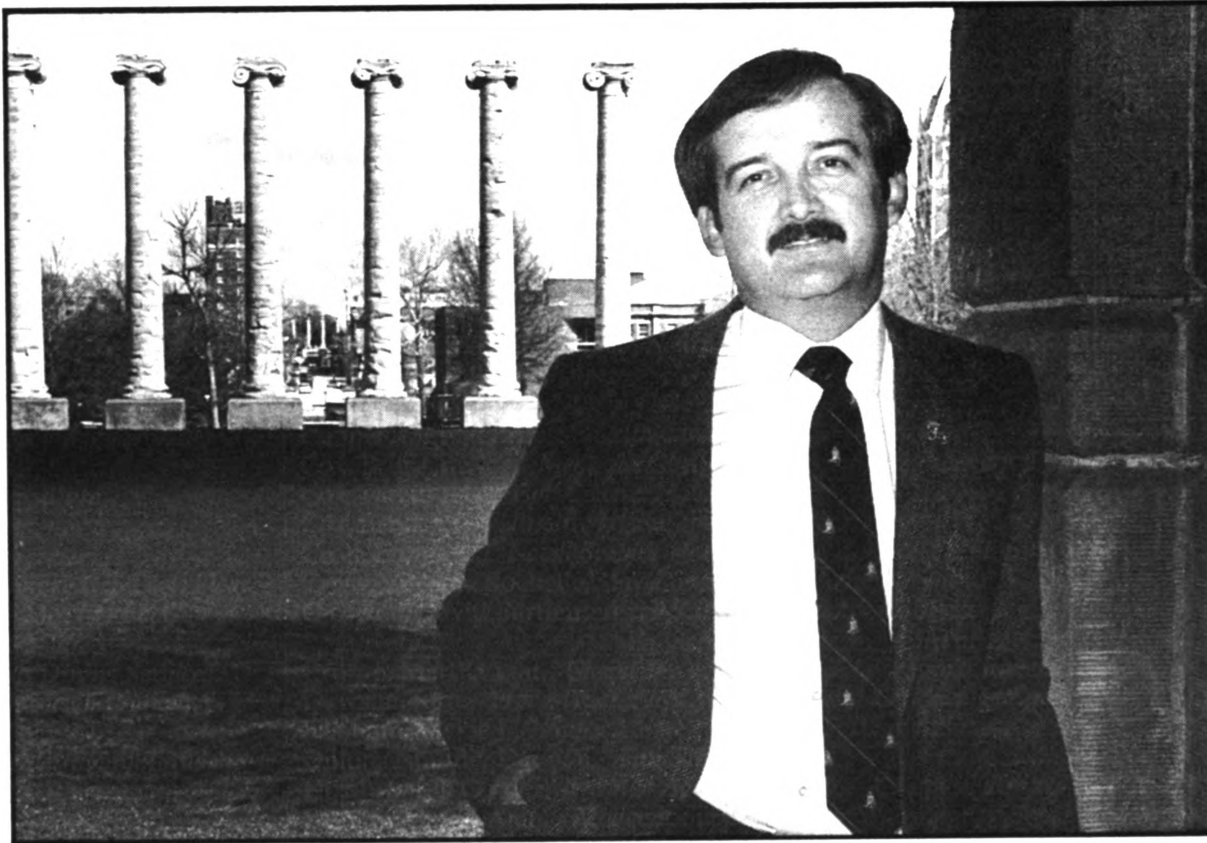
One special project he's working on might make the job easier in the future. Wilcox is putting into place a computerized degree audit system. The system will allow arts and science advisers to automatically monitor a student's progress towards a degree.

He has a bachelor's degree in history and government from Columbia College and is working on a master's degree in history from MU. Wilcox worked at Columbia College and the Boone County collector's office before coming to work for MU in 1979.

Rob Hill photo

Barbara S. Uehling Award for Administrative Excellence

Created by Staff Advisory Council in 1986, the award honors the former chancellor's efforts on the part of staff members. Uehling, who served as chancellor from 1978 through 1986, created Staff Council during her first year on campus. The honorary award acknowledges administrators who have demonstrated qualities of leadership and administrative excellence, and who have contributed to improved working conditions and the quality of life for Mizzou staff.



Rob Hill photo

Richard Otto

Doing the right thing

Being named 1990 recipient of the Barbara Uehling Award for Administrative Excellence came as a pleasant surprise for Richard Otto, academic budget and resource officer in the provost's office. "I'm pleased as all get-out," Otto says.

Otto has seen many sides of the campus in his more than 18 years at Mizzou. He's worked in the accounting office at University Hospital and Clinics and spent six years at University Hall, working on UM System budgets. About 10 years ago Otto moved to the MU campus, where he now coordinates academic budget planning for the provost's office.

Otto's co-workers say he is one of the most knowledgeable and helpful people on

campus when it comes to budgetary and financial matters. "One of the most important features of Dick's work is his careful management of University commitments," says Robert Denhardt, vice provost. "Dick has a very keen sense of what is good for the institution and carefully balances ethical considerations with technical considerations. He is concerned not only with doing things right, but with doing the right thing."

Otto's commitment to Mizzou runs deep, and that commitment is a family affair. His wife, Donna, is associate hospital director for nursing services at University Hospital. Between them, they have earned four degrees from MU.

"About six or eight years ago, my wife

and I decided that this was where we wanted to be," he says. "I probably enjoy most the really good people who are here at the University. The University has been very good to me. I've had the opportunity to work with some very good administrators."

Otto offers many examples of dedicated MU employees, from the payroll staff that makes sure everyone gets their paychecks on time, to the Council of Deans. "The deans' group is an interesting group," he says. "I think they really work as a team. They have to represent their schools and colleges, but at the same time they often represent the total institution's needs."

In his job as academic budget officer, Otto is well aware of competing needs on

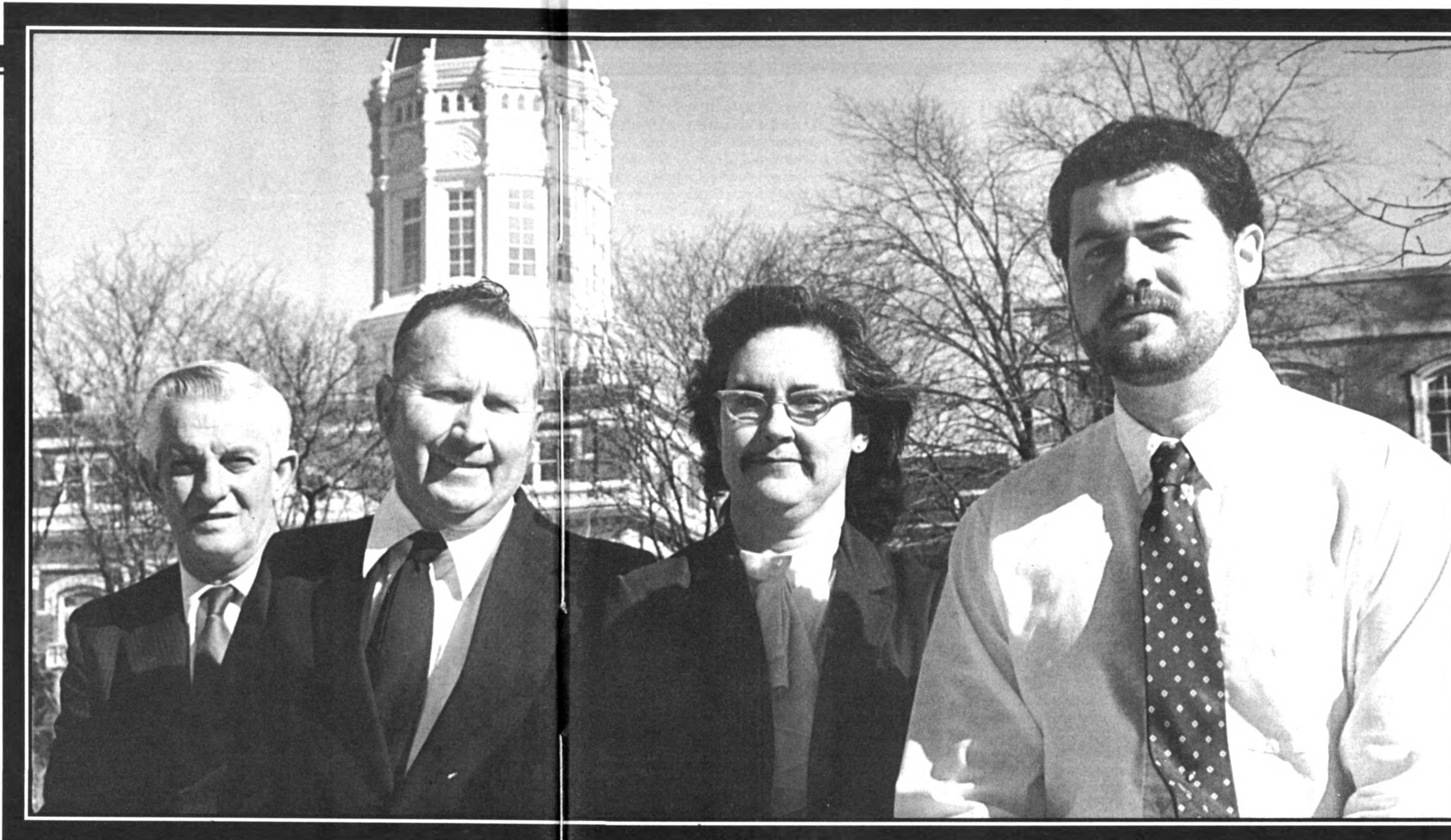
campus. "I juggle lots of balls at one time," he says.

Otto also does some juggling with his projects outside the office. He proudly describes himself as "the dean of umpires" for the Daniel Boone Little League in Columbia. And for more than a dozen years Otto has been on the board of directors of the Mizzou Credit Union. In that time he's watched it grow into a \$35-million operation that serves all MU employees.

"What is neat about the University has to be the people who are here, day in and day out, year after year — whether they be groundskeepers or college professors," Otto says. "Some really good people have been here and remain here."

The 1990 winners of the \$1,000 Chancellor's Staff Recognition Awards come from different areas of the campus. But they all possess the personal and professional qualities required to be

Top-notch employees



The Chancellor's Staff Recognition Award winners are, from left: Harold Sontag, Ted Turner, Mary Smith and Randy Sapp.

HAROLD SONTAG



Harold Sontag has planted some deep roots on the MU campus. His career at the University began nearly 30 years ago, when he signed on as a steamfitter with Campus Facilities.

Since 1973, Sontag has been skilled trades supervisor at the Hearnes Center, overseeing maintenance of the building and making sure everything is ready for the wide variety of events presented at Hearnes.

It doesn't matter whether it's a Tiger basketball game or a state wrestling tournament or a concert by the rock group Motley Crue; Sontag and his staff are on hand getting the equipment set up just right. But his Mizzou roots go even deeper than that. Sontag literally grew up on campus. His father worked as a foreman at the horse barn and the family lived

in University housing.

All that experience adds to Sontag's effectiveness as an administrator, says Pat Fitzgerald, director of the Hearnes Center. Sontag is the winner of the Chancellor's Staff Recognition Award in the administrative/professional category.

"With Harold's knowledge of the campus, there are very few roadblocks he runs into," Fitzgerald says. "Harold is very deserving of the award. He is a loyal, dedicated University employee and an excellent administrator and supervisor. He's a friend to anyone who ever has had the opportunity to work with him."

Sontag enjoys the day-to-day challenges of his job. Each event at Hearnes requires careful planning. For one recent rock concert, Sontag had to coordinate the unloading and set-up of 11 semi-truck loads of sound and light equipment. For that concert, he was on the job from 5 a.m. one day to 3 a.m. the next. Then he caught a few hours' sleep before coming back to set up for a gymnastics meet.

"I think the University is a great place to work," Sontag says. "I like the Hearnes Building. I like the opportunity to work on different events. I like working with the public, faculty, students and staff. It's not a routine thing — there's something different every day."

Finalists in the administrative/professional category are Ron Haffey, administrative manager of the veterinary teaching hospital; Pamela Hall, administrative associate II at the Health Sciences Center's Multipurpose Arthritis Center; and Barbara Staiger, administrative manager in the College of Arts and Science.

TED TURNER



Ted Turner's supervisor calls him an ideal employee. In fact, he has only one quarrel with the way Turner, MU's lead fire inspector, goes about his job. He says Turner is so conscientious that it's hard getting him to take any time off.

"We're always on his case. We tell him, 'Ted, you've got to take some vacation time off or you'll lose it,'" says Larry Long, preventative maintenance manager at Campus Facilities. "Ted's standard reply is, 'Who will watch my campus?'"

Turner takes the compliments in stride, but winning the Chancellor's Staff Recognition Award in the crafts/maintenance category is something special. "I appreciate winning the award. It's still hard to believe," he says.

Turner has been "watching" the Mizzou campus for more than 28 years now. As lead fire inspector, his job is to see to it that all the fire extinguishers at Mizzou are charged up and ready to go. Every Thursday he rings the fire alarms in 86 campus buildings to make sure they're working. Once a month he tests all the fire sprinkler systems.

But there's more to the job than simply testing the equipment. Turner is on call 24 hours a day to help solve any fire safety problems that might develop. He also trains residence hall assistants in fire safety and assists departments across campus with proper storage techniques and other fire safety questions.

In his years at Mizzou, Turner has poked and prodded his way through most of the nooks and crannies on campus looking for fire hazards. He is MU's only fire inspector, but Turner says he gets plenty of help. "It's a challenge every time you turn around. The cooperation I get from some people on campus is just great. In my job you meet just about everyone on campus."

And for Turner, those years at MU have been rewarding. "I think working at the University is fantastic. It's been really good to me," he says. "I especially enjoy meeting the students. Of course, they sometimes don't like me on Thursdays when I'm ringing the fire alarms in their dorms."

Finalists in the crafts/maintenance category are Lou Frances Maxwell, custodian at Campus Facilities; Wayne E. Shoemaker, research maintenance technician in Biological Sciences; and Robert M. Stapleton, building maintenance custodian for Residential Life.

MARY R. SMITH



Keeping a busy academic office humming is no small task, but Mary Smith takes it in stride. She's a senior secretary in the Department of Animal Sciences, where she works for three faculty members doing correspondence and preparing lecture materials and journal articles.

Smith is the winner of the Chancellor's Staff Recognition Award in the secretarial/clerical category.

"Mary always shows leadership," a co-worker from Smith's office says in a nominating letter that outlines all the qualities that set Smith apart. "She even comes in on weekends to attend to work that can't wait."

Making that extra effort comes naturally to Smith. "If something needs to be done, it needs to be done," she says. "I was brought up in the day when you complete the job, no matter what it takes."

Smith has worked for the University for nearly 30 years, and has been in the poultry program the entire time. One of her many jobs is to coordinate the sale of farm products that the program generates, such as live chickens and cases of fresh eggs.

She remembers how she made the decision to come to work at Mizzou. A recruiter from the University came to her business class at Fulton High School and talked about the opportunities available at MU. "I graduated on a Friday and went to work for the University the next Monday," Smith says.

It's a decision she doesn't regret. "Working at the University just became a part of life," she says. "I like the variety in my job. I don't do the same thing every day. I love working with people and the students."

In addition to all her administrative work in the Animal Sciences Department, Smith makes an extra effort to help students find their way through the sometimes difficult academic maze. She's there for them when they need a complicated question answered or a paper typed on short notice. And the students remember that unstinting help. Old students stop by when they're in town to see how Smith is doing.

Finalists in the secretarial/clerical category are Connie S. Howard, senior secretary in Environmental Design; Dan Kerner, senior clerk in Student Development; and Nancy Taube, senior secretary in the History Department.

RANDALL J. SAPP



Randy Sapp's co-workers use words like "dependable," "hard-working" and "patient" to describe his work as a senior research laboratory technician in Biological Sciences. But when he sits down to prepare slides for the electron microscope, they use another adjective — "artist."

Sapp is part of a research team that is studying how the eyes of fruit flies work. His job is to dissect and mount tiny slices of eye tissue on slides for the electron microscope. The work is meticulous. Some samples are only one millionth of an inch thick — so thin they can't be seen by the human eye.

Sapp, winner of the Chancellor's Staff Recognition Award in the technical/paraprofessional category, is a Columbia native who graduated from Mizzou in 1984 with a bachelor's degree in biology. He knew when he went to work for MU 5 1/2 years ago that he wanted to do research work in biology. His job allows him plenty of room for professional growth.

This summer he expects to complete his master's degree. Along with his supervisor, William Stark, professor of biological sciences, Sapp has co-written nine refereed journal articles or book chapters and has made 17 presentations at national and international conferences. The articles are illustrated with half-tone photographs that he spent hours in the darkroom producing.

For Sapp, that interest in biology makes his job challenging. "It's very rewarding to see my work published, to see it make its way into journals," he says. "And the lab is just a fun place to work. We have a team approach to the work we do."

Sapp's colleagues point to him as one reason that the team effort works. "Randy joined my laboratory in 1984," Stark says. "I had been having trouble getting a grant, but finally received funding from the National Science Foundation. During that three-year grant, this laboratory's productivity was so high, largely due to Randy's growth, that I now have two grants for a total of \$600,000 for four years."

Finalists in the technical/paraprofessional category are Ann Childers, staff nurse II at University Hospital; Emily Frisch, electron microscopy technician in Biological Sciences; and Robert Heinz, senior research laboratory technician in Plant Pathology.

Continued from Page 6.

Richardson, Donaleigh, *Associate Director, Administrative Services*
 Rogers, William H. Jr., *Printing Services*
 Schmocker, Reinhold O. Jr., *Practical Arts & Vocational-Technical Education*
 Scott, Alvin Wayne, *Plant Engineering*
 Smith, Petrona Justina, *Campus Dining Services*
 Spencer, Kenneth L., *Psychology*
 Thompson, Lillie Pearl, *Campus Dining Services*
 Vandelicht, John Lemuel, *Campus Facilities*
 Wright, Robert Joe, *Respiratory Therapy*
 Zimmer, Marjul Frances, *Campus Dining Services*

20 YEARS

Armontrout, Helen J., *Admissions*
 Bachman, Helen E., *Registrar & Director of Admissions*
 Baker, Peggy M., *Computer Center*
 Baker, Valerie Gayle, *Physical Medicine & Rehabilitation*
 Baker, Woodrow Stevenson, *Campus Facilities*
 Baysinger, Betty J., *Health Related Professions*
 Bealmear, Lester Leroy, *Campus Facilities*
 Bennett, Deborah Sue, *Food Services*
 Betz, James S., *Campus Facilities*
 Bright, Danny D., *Plant Engineering*
 Brown, Mike Lee, *Campus Dining Services*
 Brown, Sarah Kathryn, *Registrar & Director of Admissions*
 Buchner, Carl A., *Personnel Services*
 Buckler, Laura Jane, *Agricultural Economics*
 Buckner, Diana Lee, *Admissions*
 Burnett, Nancy Ellen, *Computer Center*
 Clark, James D., *Nursing - Associate Director*
 Coleman, Mariann, *Psychiatry*
 Collins, Georgia Belle, *Food Services*
 Cornell, Raymond Allen, *Watchmen*
 Cunningham, Gary Alan, *Library*
 Cunningham, Judith Ann, *Special Education*
 Curtis, James Beverly, *Horticulture*
 Davee, Samuel G., *Campus Facilities*
 Dougherty, James A., *Plant Engineering*
 Doxley, Barbara Jean, *Campus Facilities*
 Duffus, Gerald Raymond, *Watchmen*
 Gay, Charles Hugh, *Physiology*
 Hagans, Viola C., *Veterinary Medicine & Surgery*
 Hall, Pamela Jane, *Multipurpose Arthritis Center*
 Harlow, Charles Russell, *Computer Center*
 Harms, Karen Annette, *Procurement/Materials Management*
 Hickem, Robert L., *Memorial Union/Brady Commons*
 Hopper, Keith Cecil, *Residential Life*
 Hull, Carol Louise, *Pathology*
 Ives, Patricia Kay, *Development*
 Jacobs, Dennis Roscoe, *Forage Systems Resource Center*
 Johnson, Josephine, *Library*
 Jones, Wilbert James, *Campus Facilities*
 Kelly, James Eugene, *Mail Room*
 Kemper, Carolyn Ann, *Vice Chancellor Administrative Services*
 Koch, Janice Ann, *Cashier/Payroll/Student Loans*
 Lammers, Judith Elaine, *Office of Research*
 McAllister, Carol J., *Parking & Transportation Services*
 McKenzie, Larry David, *Campus Facilities*
 Mellerup, Dale Carlyle, *Laboratory Animal Medicine*
 Miller, Warren Lee, *Cashier/Payroll/Student Loans*
 Murray, Floyd Leon, *Campus Facilities*
 Palmer, Harri Anne, *Art*
 Pemberton, Barry Duane, *Campus Mail Service Facility*
 Perkins, Marlene Sonnenberg, *Rural Sociology*
 Porter, Sue Bet, *Animal Science*
 Quattrocchi, Lou, *Child Health*
 Ravenscraft, Harold Eugene, *Plant Engineering*
 Reed, Eugene Fieldon, *Campus Facilities*
 Rogers, Harrison C., *Campus Mail Service Facility*
 Salmon, Bob Harvey, *Medical Records*
 Salmon, Linda Kay, *Veterinary Medicine & Surgery*
 Sapp, Linda Sue, *Dean of Arts & Science*
 Scott-Oswald, Thaney L., *Pathology*
 Smith, Gerald Lee, *Campus Facilities*
 Smith, Sharon Dawn, *Food Services*

Southerland, Robert Wayne, *Campus Facilities*
 Spate, Vickie L., *Research Reactor*
 Steelman, Elgin Floyd, *Residential Life*
 Warrick, Bertha Lee, *Nursing CCU - Float*
 Welday, Ruby Ann, *School of Natural Resources*
 Wiles, Mary Ann, *Surgery*
 Willfley, Donald Gene, *Police*
 Wilhite, Linda Faye, *Development*
 Wilson, Sueda Lee, *Printing Services*
 Wright, Connie, *Ophthalmology Clinic*

15 YEARS

Albert, Patrice, *Biological Sciences*
 Anderson, Ethel Mae, *Campus Facilities*
 Anthony, Alma Fay, *Dean of B&PA*
 Baur, Lou Ellen, *Hospital Purchasing*
 Beissenherz, Marilyn E., *Veterinary Pathology*
 Danner, Emily Susan Bent, *Library*
 Blair, Ellen Louise, *Library*
 Bradshaw, Joyce Lee, *Linen Services*
 Brown, Mary Kathleen, *University Physicians Marketing*
 Buckner, Betty Jean, *Cashier/Payroll/Student Loans*
 Clevenger, Peggy Jean, *Pathology*
 Coats, Sally Irwin, *Medicine*
 Coleman, Sandra Jean, *Campus Mail Service Facility*
 Crane, Rosemary, *Biochemistry (Medicine)*
 Crowley, Charles Christopher, *Campus Dining Services*
 Dalke, Ruth Irene, *Biological Sciences*
 Daly, Maureen, *German, Russian & Asian Studies*
 Dalzell, Norah C., *Vice Provost Extension*
 Davis, Ruth Ellen, *Linen Services*
 Demian, Susan H., *Provost*
 Dexheimer, Annabell W., *Campus Facilities*
 Doyle, Andrea Gloria, *Missouri Institute of Psychiatry*
 Ederati, Duane Jewell, *Campus Facilities*
 Fowler, Vernice O., *Plant Engineering*
 Garrett, Paul Gordon, *Academic Support Center*
 Glatz, Annette Marie, *Food Science & Nutrition*
 Gouker, George V. Jr., *Watchmen*
 Hagans, James Robert, *Printing Services*
 Hagan, T. Jeanne, *Bookstore*
 Hane, Elva Irene, *Procurement/Materials Management*
 Henry, Louise, *Molecular Biology*
 Henry, Nadine Faye, *Forage Systems Resource Center*
 Hickam, Dorothy Jean, *Housekeeping*
 Hicks, Minnie I., *Food Services*
 Jen, Betty Y., *Cooperative Extension*
 Jobs, Dan A., *Housekeeping*
 Johnson, Gary Thomas, *Campus Mail Service Facility*
 Williamson, Buck Jr., *Facilities Design & Development*
 Kespohl, Robin Ann, *Library*
 King, Vivian Ann, *HSC Telecommunications*
 Kivett, Horace Lannon, *Facilities Design & Development*
 Lindell, Evelyn K., *Dean of Agriculture*
 Meyer, Walter A., *Research Reactor*
 Mitchell, Jamie Sue, *Accounting*
 Mitchell, Opal Lee, *Nursing Surgery B (5 East) Float*
 Morton, Kathleen Jo, *Nursing - Med J (4 East)*
 Moum, Gene Keith, *Research Reactor*
 Nevels, Clifford Donell, *Campus Dining Services*
 Nowlin, Mary L., *University Physicians Patient Accounting*
 Nunnenkamp, Velma Lou, *Cashier/Payroll/Student Loans*
 Palmer, Janice, *Residential Life*
 Perkins, Cheryl Sue, *Agronomy*
 Petro, Sylvia, *Surgery*
 Phillips, Tim Edward, *Campus Facilities*
 Piles, Vivian Johnson, *Nursing PNU - Float*
 Porter, Mary Isabelle, *Anthropology*
 Rogers, Gordon C., *Emergency Suite*
 Russell, Dennis M., *Research Support Services*
 Ryan, Martin P., *Child Health*
 Inscore, Alma Beatrice S., *Dean of Law*
 Schill, Jeffrey Fredric, *Associate Director, Professional Services*
 Shepherd, Beulah Pearl, *Bookstore*
 Smith, Leland Terry, *Campus Facilities*
 Stamper, Don G., *Associate Director, Professional Services*
 Stapleton, Daniel Sylvester, *Practical Arts & Voc.-Tech. Ed.*

Troutner, Sue Tucker, *Dean of Agriculture*
 Varady, Livia Maria, *Dean of Engineering*
 Wendell, David E., *Veterinary Microbiology*
 Wilcox, Jeffrey Brian, *Museum*
 Williams, Peggy Lee, *Housekeeping*
 Windmoeller, Mary K., *Pathology*
 Winegar, Teresa Sue, *Campus Facilities*
 Yelon, William B., *Research Reactor*

10 YEARS

Algieri, Jimmie, *Facilities Design & Development*
 Algieri, Vicki Lee, *University Physicians Patient Accounting*
 Allen, Barbara Virginia, *Social Services*
 Allen, Jack Russell, *Publications & Alumni Communication*
 Alviso, Debbie Susan, *Higher & Adult Education & Foundations*
 Anderson, Robert Dean, *Campus Dining Services*
 Armontrout, Dana Kay, *Vice Provost Extension*
 Baker, Freddie L., *Learning Center*
 Baker, Robert Michael, *Campus Computing Facilities*
 Banerji, Zarrine, *Pathology*
 Banks, Mark Allen, *Nursing - Medicine K (4 West)*
 Barry, Julie, *Agronomy*
 Baskett, Joe Donovan, *Research Reactor*
 Basnett, Kathy J., *Family & Community Medicine*
 Baylor, George Lewis, *Veterinary Medicine & Surgery*
 Beattie, Sally, *Nursing Medicine/Surgery Central*
 Becker, James M., *TV Station*
 Beezley, John Max, *Computer Center*
 Belaka, John, *Plant Engineering*
 Belgya, Carole Lynne, *Multipurpose Arthritis Center*
 Bender, Carl M., *Development*
 Benney, Barbara Ann, *Campus Facilities*
 Berkemeyer, Katherine Gaye, *Physical Medicine & Rehabilitation*
 Brendel, Robert Carl, *Intercollegiate Athletics*
 Brewer, Joseph Myron, *University Physicians Patient Accounting*
 Brown, Lois M., *Green Meadows Clinic*
 Bunton, Carolyn Sue, *Medical Records*
 Burk, Terry Leonard, *Campus Facilities*
 Byrne, Margaret Frances, *Campus Facilities*
 Calvin, Carol Sue, *Warehouse Operations*
 Calvin, Eldon H., *Printing Services*
 Camden, Jean Mary, *Pharmacology*
 Carter-Tritschler, Martha A., *Research Reactor*
 Chaney, Bob E., *Chemical Engineering*
 Cleek, Sally Ann, *Editorial Department*
 Cleveland, David Raymond, *Campus Dining Services*
 Coley, Marcy L., *Campus Facilities*
 Collier, Ann Louise, *Human Nutrition & Foods*
 Conces, Ann M., *Pathology*
 Cooley, Cynthia D., *Nursing NICU - Float*
 Cooper, Melvin Ernest, *Delta Center*
 Cox, Bruce Taylor, *Medtique Gift Shop*
 Cox, David Ray, *Golf Course*
 Cox, Sandra F., *Nursing NICU - Float*
 Croll, Emmy L., *Naval Science*
 Cross, Virginia Rochelle, *Food Services*
 Crowley, David Bartlett, *Veterinary Medicine & Surgery*
 Crump, Martha Lou, *Chemistry*
 Dawson, Judi, *Provost*
 Denham, Vickie J., *Physics*
 Dillon, Timothy Damian, *Pathology*
 Dixon, Sarah Golder, *Dean of Agriculture*
 Dunkin, David Alan, *Academic Support Center*
 Dunn, Richard Gordon, *Printing Services*
 Ehlert, Karen Kealoha, *Microbiology*
 Elliott, Bette Ellen, *Library*
 Estes, Becky Lynn, *Cashier/Payroll/Student Loans*
 Evans, Judith Ellen, *Surgical Services*
 Fisher, Roger Wayne, *Residential Life*
 Franke, Roxanne Marie, *Nursing PICU - Float*
 Furlong, Karen Kay, *Medical Records*
 Gelatt, Andree M., *Occupational Therapy*
 Gilmore, Wilbur Dean, *Campus Facilities*
 Glascock, Cynthia L., *Animal Science*
 Goehring, Deborah K., *University Physicians Finance*
 Goldman, Maurice Albert, *Campus Facilities*
 Grimes, Paulette, *Student Development*
 Guinnip, Pinky Sue, *Food Services*
 Gunn, Elizabeth Lou, *Admissions*

Gunn, Gregory Floyd, *Research Reactor*
Hadden, Carrie L., *Medical Records*
Hall, Larry E., *Facilities Design & Development*
Hatton, C. Wood Jr., *Campus Facilities*
Hayes, Floyd Levarn, *Residential Life*
Hayes, Tracy Allen, *Campus Facilities*
Hegeman, Mary Crawford, *Nursing Information Systems*
Heidlage, Judith Anne, *Emergency Suite*
Hein, David Alan, *Computer Center*
Hinklin, Patsy Elaine, *Agronomy*
Holley, Lindy Morrow Jr., *Pharmacy*
Holliday, Tammy Merlean, *Food Science & Nutrition*
Holmes, Francine Marie, *Procurement/Materials Management*
Hood, Diana Klemme, *Personnel*
Hudson, Randall Dale, *Intercollegiate Athletics*
Hughes, Mary, *Nursing PNU - Float*
Hugo, Nancy Louise, *Nursing Surgery A (5 West) Float*
Humlicek, John Allen, *Residential Life*
Hutchen, Gary Orlando, *Residential Life*
Idle, Ruby Ann, *Veterinary Diagnostic Laboratory*
Ireland, Teresa Ellen, *Green Meadows Clinic*
James, Dixie L., *Security*
James, Macieo, *TV Station*
Jankowski, Helen, *Nursing Information Systems*
Jefferson, Ronnie, *Campus Facilities*
Jensen, Claudia Sue, *Student Development*
Jesse, Joyce Marian, *Student Development*
Johnson, Claude Donald, *Dean of Medicine*
Johnson, Gregory Kent, *Campus Computing Services*
Jones, Clara Leneir, *Instructional Materials Center*
Jones, Reed, *Memorial Union/Brady Commons*
Jones, William C., *Campus Dining Services*
Kaufman, Gerri M., *Child Study Clinic*
Kea, Ta, *Campus Dining Services*
Kennedy, Alan Thurman, *Campus Facilities*
Kesterson, Deborah Mclean, *Associate Director,*

Professional Services
Kilfoil, James Micheal, *Research Reactor*
Killian, Gwendolen Kay, *University Physicians*
Patient Accounting
Kinder, Elizabeth O., *Child Health*
Kittle, Clayton Dale, *Cardiology Laboratories*
Kleeschulte, Camille Joan, *Nursing PICU - Float*
Klenke, Patricia Lynn, *Academic Support Center*
Klippel, Herman E., *Campus Facilities*
Knipp, David Arthur, *Psychology*
Koebel, Paula Marie, *Dean of Engineering*
Korte, Karen Diane, *Nursing WHCU - Float*
Kuntz, Lawrence Francis, *Plant Engineering*
Langhorst, Susan M., *Research Reactor*
Leach, Benjamin William, *Printing Services*
Lee, Kathryn, *Supply Distribution*
Linhardt, Patricia Anne, *Nursing Nursery I - Float*
Logan, Anthony J., *Campus Facilities*
Love, Constance Louise, *Warehouse Operations*
Lummis, Jenifer Lee, *Campus Computing Facilities*
Lu, Shi-Min, *Campus Computing Services*
Mankey, Jacalyn Margaret, *Personnel*
Matthews, Payton Wayne, *Procurement/Materials Management*
Maupin, David Robert, *Campus Facilities*
McCarty, Sara Jane, *Sameday Surgery Center*
McClanahan, Sabrina Aurelia, *Registrar & Director of Admissions*
McDaniel, Mary Elizabeth, *Surgery*
McKown, Robyn Watson, *Microbiology*
McLaughlin, Karen Kay, *Veterinary Microbiology*
McMillen, Marilyn June, *Child Health Clinic*
McQuitty, Sheridan Ann, *Residential Life*
McVey, Rhonda Rae, *Registrar & Director of Admissions*
Mead, Richard L., *Campus Facilities*
Medlin, Leilah R., *Delta Center*
Megas, Melissa A., *Library*
Mitchell, Kathleen, *Director, Hospital And Clinics*

Moberly, Kathryn Ann, *Nursing Rehabilitation W (Rusk 5) Float*
Mongler, Clifford L., *Agricultural Engineering*
Monroe, Willard Harold, *Facilities Design & Development*
Monticelli, Stephen Paul, *Police*
Moore, Richard Allen, *Pharmacy*
Morrison, Virginia Lee, *Pathology*
Morton, Lynda Sue, *Mathematics*
Mountjoy, Larry, *Plant Engineering*
Myers, Dexter, *Supply Distribution*
Nelson, Eugene Joseph, *Campus Facilities*
Nicholson, Janet Sue, *Veterinary Pathology*
Niekamp, Thomas Anthony, *Rehabilitation Services - Administration*
Novinger, Susan M., *Medicine*
Oglevie, Rick Allen, *Pathology*
Olesen, Paul Roger, *Ophthalmology*
Orman, Tamara K., *Nursing PICU - Float*
Palmer, Albert D., *Campus Facilities*
Payne, Garnet L., *Intercollegiate Athletics*
Perkins, Betty Virginia, *Residential Life*
Perkins, Melvin, *Campus Facilities*
Phillips, Larry F., *Residential Life*
Porter, Georgeanne Barlow, *Registrar & Director of Admissions*
Potts, Sonia Kay, *Bookstore*
Preus, John William, *Student Development*
Purdy, Gregory Alvin, *Veterinary Pathology*
Putnam, James W., *Campus Facilities*
Reeder, Robert, *American Archeology*
Renner, Judith B., *Health Services Management*
Riley, Susan Jane, *Nursing NICU - Float*
Roemer, Helen Irene, *Patient Accounts*
Roland, Van, *Food Services*
Rudel, Bettejane Colleen, *Analytical Services*
Ruppert, William Theodore, *Campus Facilities*

Turn to Page 12.

Important Memo:

As of Monday, April 9, 1990, General Stores will transfer responsibility for the sale of postage stamps to Campus Mail Service.

General Stores will no longer sell postage stamps.

You may purchase postage stamps from Campus Mail Service by completing an Inter-Department Order. Mail or deliver your IDO to Campus Mail Service, 310 Watson Place.

If you have any questions about the new procedure for ordering postage stamps, please contact:

**Campus Mail Service
882-6522.**

====> Let's Compute!_

We're Doing Our Spring Cleaning

We're clearing out our Lotus 1-2-3 upgrades. For a limited time only, you can receive a FULL PACKAGE UPGRADE to Version 2.2 or 3.0 at a discount.

For information on the pricing and new features of the Lotus upgrades, call or visit the Demo room, 22 Heinkel, 882-9400. Our new ours are:

Monday, Wednesday, & Friday	9 am-1 pm
Tuesday & Thursday	12 pm -4 pm

Continued from Page 11.

Scantlan, Kevin Dwayne, *Computer Center*
 Shackelford, Lloyd Allen Jr., *Campus Facilities*
 Schultz, Elizabeth Ann, *Accounting*
 Shanks, Patricia Ann, *Center/Research Social Behavior*
 Shelton, Edwin Henry, *TV Station*
 Simpson, Vivian Jean, *Linen Services*
 Sims, Gleneva, *Sameday Surgery Center*
 Snellen, Patricia Louise, *Pathology*
 Snyder, Harry R., *Center Educational Assessment*
 Spangler, Josephine M.A., *Student Financial Aids*
 Spry, Dennis Layne, *Multipurpose Auditorium*
 Stark, Debra Sue, *Pathology*
 Stark, Sharon N., *Educational Administration*
 Stratman, Teresa A., *Parking & Transportation Services*
 Strommen, Susan Kay, *Pharmacy*
 Stull, Nancy G., *Dean of B&PA*
 Suhrbier, Wanda Lee, *Registrar & Director of Admissions*
 Swanson, Mary Lucille, *Alumni Activities*
 Terry, Rosalind Elaine, *Animal Science Research Center*
 Thomas, Sandra G., *Veterinary Diagnostic Laboratory*
 Tollerton, Richard David, *Nursing Rehabilitation W (Rusk 5) Float*
 Treece, Dale Edward, *Research Support Services*
 Urquiola, Philip B., *Campus Facilities*
 Van Gelder, Celia Louise, *Library*
 Vanbeek, Lora June, *Cashier/Payroll/Student Loans*
 Vance, Judith Marie, *Nursing - Associate Director*
 Veit, Stanley Joseph, *Computer Center*
 Walden, Gary Marshall, *Bookstore*
 Ware, James Craig, *School of Natural Resources*
 Washington, Karl Eugene, *Residential Life*
 Waters, Sherri Jane, *Nursing PNU - Float*
 Wesselmann, Dale Ray, *Campus Facilities*
 Westcott, Joan Lavone, *Office of Research*

Wiedmeyer, Hsiao-Mei, *Child Health*
 Williams, Steven A., *Cooperative Extension*
 Wilson, Tonya L., *Printing Services*
 Windmoeller, Lawrence G., *Pharmacy*
 Woods, Ronetta Diana, *Campus Dining Services*
 Woody, Rhonda Jo, *Practical Arts & Vocational-Technical Education*
 Wood, Constance Lee, *Personnel Services*
 Wood, Mark Steven, *TV Station*
 Worley, Karen Sue, *Publications & Alumni Communication*
 Worsham, John Alan, *University Physicians Data Processing*
 Yeakey, Larry Eugene, *Campus Facilities*
 Yem, San, *Sterile Processing*
 York, Cheryl A., *Personnel*
 Young, Deborah Ann, *University Physicians Patient Accounting*
 Young, Peggy K., *Medicine*
 Zimmer, Brenda Gayle, *Campus Dining Services*
 Zimmer, Michael C., *Printing Services*
 Zumwalt, Thomas Lowell, *Supply Distribution*

5 YEARS

Abramowicz, Laurie, *Campus Facilities*
 Acton, James B., *Printing Services*
 Adams-Kraus, Penny Lou, *Vice Provost Extension*
 Adkins, Jerelyn Kay, *Nursing - Clinical Support Services*
 Alioto, Armine, *Surgery*
 Andersen, Dean Christian, *Residential Life*
 Anderson, David Allen, *TV Station*
 Andrews, Suzanne, *Vice Provost Extension*
 Anthony, Rhonda, *Surgery*
 Astroth, Kay McDonald, *Ambulance Service*
 Bacon, Robert John, *Pathology*
 Baker, Stella, *Campus Facilities*
 Ball, Yvonne J., *Printing Services*
 Barker, Christopher, *Campus Computing*

Administration

Barrow, Catherine Lynn, *Occupational Therapy*
 Baumgartner, Lynda S., *Special Education*
 Bean, William B., *Laboratory Animal Medicine*
 Beck, Mark Cordes, *Campus Facilities*
 Berkley, Clint A., *HSC Telecommunications*
 Bickford, Ann Marie, *Nursing PNU - Float*
 Bieri, Susan, *Printing Services*
 Blackwell, Traci Ann, *Business Services*
 Blythe, Diane Renee, *Child Health*
 Bocklage, Todd G., *Respiratory Therapy*
 Bocklage, Tracy Kay, *Nursing PNU - Float*
 Bodard, Nancy L., *Accounting*
 Bower, Carol Adele, *Emergency Suite*
 Brady, Kathy Jo, *Cardiology Laboratories*
 Brake, Matthew S., *Printing Services*
 Bredemann, Mary Anne, *Medical Records*
 Brewer, Jim J., *Clinical Engineering*
 Brogdon, Kenneth Ray, *News Service*
 Brown, Bonnie E., *Printing Services*
 Brown, William E., *Agronomy*
 Bryant, Lise Couture, *Bookstore*
 Buckelew, Dennis Wayne, *University Physicians Ambulatory Care*
 Burke, Robert J., *Student Development*
 Burlison, Barbara H., *Student Development*
 Burnett, Jane E., *Pharmacology*
 Butler, Rochelle Bernita, *Supply Distribution*
 Cannell, Ralph Garnett, *Emergency Suite*
 Cannon, Cinda K., *Medicine*
 Carmack, Tina, *Animal Science*
 Carmichael, Dale L., *Campus Facilities*
 Carter, Brian K., *Veterinary Pathology*
 Carter, Jan E., *Veterinary Medicine & Surgery*
 Carter, Meleia Dee, *Nursing Neurosurgical Unit Float*
 Catlett, Donna Jean, *Nursing Surgery A (5 West) Float*
 Chaduka, Oliver M., *Housekeeping*
 Champ, Barbara Renee, *Physical Therapy - Rusk*

Computer Spectrum's

OBSOLETE MERCHANDISE SALE

Located next to Fernwood Flowers
in the Brady Commons Building.

Remaining Inventory

50% off

red tag price

Wednesday, Thursday, Friday only.

All sales final

No student charges accepted.

Mon.-Fri. 9am-12pm, 1pm-4pm



The Secretary's Week Luncheon on April 23rd at the Hearn Fieldhouse is

\$9.25!

instead of the \$11.25 quoted on the invitations.

Make your reservations

TODAY!

UNIVERSITY BOOKSTORE

Rehabilitation Center

Chapman, Cherie J., *Veterinary Diagnostic Laboratory*
 Cherrington, Mindy L., *Nursing TICU - Float*
 Christianson, Harry, *Plant Engineering*
 Clawson, Anna Mae, *Vice Provost Extension*
 Clevenger, Jerry Dale, *Development*
 Cobb, Coy Otis Jr., *Ophthalmology Clinic*
 Coleman, Sandra K., *Intercollegiate Athletics*
 Coleman, Stephen L., *Campus Facilities*
 Conklin, Randall S., *Veterinary Medicine & Surgery*
 Copeland, Christy Marie, *Dean of Agriculture*
 Corbett, James Alan, *Ambulance Service*
 Cottle, Brian Nelson, *TV Station*
 Cox, Theresa Nell, *Missouri Institute of Psychiatry*
 Craig, Catrina Faye, *Campus Dining Services*
 Craig, Judy K., *Student Health Services*
 Crane, Randy, *Plant Engineering*
 Crites, Monroe L., *Campus Facilities*
 Crockett, Robert E., *GM Ancillary*
 Dahlke, Donald K., *Supply Distribution*
 Dailey, Carl Fredrick, *Residential Life*
 Daniel, Richard E., *Biological Sciences*
 Daugherty, Kimberly L., *Dean of B&PA*
 Davison, Lewis K., *Campus Computing Services*
 Davis, Ruby, *Residential Life*
 Deakins, Jinnie Louise, *Green Meadows Clinic*
 Delashmutt, Meda, *Radiology*
 Dewall, Walter J., *Forage Systems Resource Center*
 Doisy, Kathleen Emerson, *Entomology*
 Douglas, Manuel Edward, *Housekeeping*
 Douglas, Marilyn I., *Personnel Services*
 Drane, Edward, *Campus Facilities*
 Draper, Jeanne Hilker, *Research Reactor*
 Drexler, Kathy A., *Student Health Services*
 Dubbert, Marsha Lynne, *Multipurpose Arthritis Center*
 Duffield, James Alan, *Security*
 Dunivan, Dee Ann, *Veterinary Medicine & Surgery*
 Dunne, Janice, *Vice Provost Extension*
 Durk, Esther Marie, *Library*
 Powell, Elinor Van Dyke, *Nursing Rehabilitation W (Rusk 5) Float*
 Earl, Lori J., *Surgical Services*
 Edmiston, Jerri Louise, *Veterinary Diagnostic Lab*
 Edwards, Kent David, *Research Support Units*
 Eiffert, Teresa, *Institutional Research & Planning*
 Elder, Cindy K., *Cooperative Extension*
 Eldridge, Keith A., *Missouri Institute of Psychiatry*

Elliott, Larry O., *Campus Facilities*
 El-Sayed, Inas I., *Law Library*
 Enderle, Theresa M., *Residential Life*
 England, Donald R., *Facilities Design & Development*
 Enyart, Tyrone, *Warehouse Operations*
 Erickson, Dee Anne Speiser, *Registrar & Director of Admissions*
 Ervin, Sheryl Denise, *Registrar & Director of Admissions*
 Eubanks, Karen K., *Library*
 Even, Susan E., *Student Health Services*
 Feilner, Veronica Jean, *Practical Arts & Vocational-Technical Education*
 Feiner, Melissa Maye, *Agronomy*
 Flaim, John B., *Respiratory Therapy*
 Foster, Priscilla D., *Veterinary Medicine & Surgery*
 Gabelsberger, Lee A., *Campus Computing Facilities*
 Garrett, Deborah C., *Physical Medicine & Rehabilitation*
 Garver, Frederick, *Campus Facilities*
 Gash, Patricia L., *Printing Services*
 Geery, Ramona V., *Agricultural Economics*
 Geisbuhler, Brinda Lea, *Physiology*
 Getz, Mary Alice, *Housekeeping*
 Gibson, Louie E. Jr., *Campus Facilities*
 Gieseke, Lisa D., *Veterinary Diagnostic Laboratory*
 Goettel, Dennis Ray, *Golf Course*
 Gottschalk, Patricia Ruth, *Vice Provost Extension*
 Grasela, Julia Ann, *Food Services*
 Griffen, Jerry R., *Surgical Services*
 Griggs, Helen June, *Vice Provost Extension*
 Guilford-Davis, Tammy, *Library*
 Gunn, Stephen, *Ambulance Service*
 Gurwit, Margery R., *Campus Computing Services*
 Hagans, Gail J., *Vice Provost Extension*
 Hansen, Betty Jean, *Campus Computing Administration*
 Harmon, Eddy D., *Campus Facilities*
 Hathman, Lisa, *University Physicians Ambulatory Care*
 Heaviland, Dan Lee, *University Physicians Patient Services*
 Hedrick, Eddie Robert, *Rehabilitation Services - Administration*
 Heichelbech, Sheila Fay, *Biochemistry (Agriculture)*
 Helmich, Alfred E. Jr., *Campus Facilities*
 Henrikson, John Lee, *Cashier/Payroll/Student Loans*
 Heun, Pamela Sue, *Nursing NICU - Float*

Hickam, Mary A., *Center Educational Assessment*
 Hicks, Mark Gail, *Computer Center*
 Hill, Faye Ann, *Vice Provost Extension*
 Hill, Tonya Ledora, *Housekeeping*
 Hinds, Kenny Ray, *Campus Facilities*
 Hirst, Daniel D., *Dean of Engineering*
 Hiskey, Connie J., *Vice Provost Extension*
 Hoard, Mary Katharine, *Campus Computing Services*
 Hollis, James William, *Police*
 Holst, David A., *Procurement/Materials Management*
 Hood, Harold Kenneth, *Agricultural Engineering*
 Hunt, Mark Steven, *Vice Provost Extension*
 Hyler, William Melvin, *Residential Life*
 Ihms, Rickie Arthur, *Anesthesiology*
 Isaac, Letensie T., *Nursing Nursery I - Float*
 Jackman, Reno Eugene, *Campus Facilities*
 Jacobson, Brad, *Student Development*
 James, Charles S., *Dean of Agriculture*
 Janish, Toni Ruth, *Ob/Gyn Services*
 Jefferson, Cynthia M., *Mohs Derm*
 Jeffries, Delisa Ann, *Ophthalmology Clinic*
 Johnson, Brian Lee, *Pathology*
 Johnson, Dan W., *Procurement/Materials Management*
 Johnson, Jane, *Dean of Medicine*
 Johnson, Judith Janine, *Sameday Surgery Center*
 Johnson, Linda Sue, *Child Health*
 Johnson, Linda V., *Dean of Agriculture*
 Johnson, Lori D., *University Physicians Ambulatory Care*
 Johns, Robert D., *Campus Facilities*
 Jones, Ruth Ann, *Campus Facilities*
 Jones, Sharon Kay, *Pathology*
 Kalen, Lorraine Ann, *Campus Dining Services*
 Keller, Rebecca S., *Veterinary Biomedical Sciences*
 Kelley, Connie K., *Neurology*
 Kelly, Gregory D., *Veterinary Biomedical Sciences*
 Kelly, June Charlene, *Biological Sciences*
 Kempf, Frederick Lee, *Ambulance Service*
 Ketrung, Alan R., *Research Reactor*
 Key, Beth Ann, *Food Services*
 Key, Kevin B., *Campus Facilities*
 Kitch, Marilyn K., *Cooperative Extension*
 Kite, Pamela Jean, *Surgical Services*
 Korner, Barbara, *Music*
 Kribbs, Charles L., *Research Reactor*
 Kullman, Aloysius A., *Clinical Engineering*

Turn to Page 14.

It's important HOW you read to your children

Although it is important for parents to read to their children, one Mizzou professor says this is not enough.

"More importantly, parents need to know how to read to their children," says Stevie Hoffman, professor of education. "Parents need to invite and encourage their children's active participation in the storybook reading rather than expecting them to just sit and listen without joining in the discussion of the text and illustrations."

Hoffman, who has studied childhood literacy for years, says that although parents might not realize it, what they view as being important for their children to learn — and how well they believe their children are able

to learn — are both reflected in the learning opportunities they provide in the home and the "teaching language" they use with their children.

In support of this, one study conducted by Hoffman showed how parents changed their language strategies during storybook reading time with their first-grade children when these parents became aware that how they read was important.

As part of the study, Hoffman taped the interaction between parents and their children while they spent time together reading storybooks once during the early weeks of the school year and again during the last few weeks of the school year.

The early tapings clearly showed that storybook time was when parents read and children listened. There was limited discussion about the story and few opportunities for children to join into the actual reading process in any way.

"When the children did attempt to partici-

pate, their parents' responses were more often than not correcting or rejecting ones," Hoffman says.

In the later tapings, however, the children initiated much more of the dialogue, and the parents were less directive and more supportive. "The parents asked their children more questions and invited them into the activity," Hoffman says.

Encouraging children to read is a key to helping them develop into lifelong readers. Hoffman stresses that there are a variety of ways for parents to help their children grow.

"For most parents, reading to their children comes naturally, especially if they really enjoy reading themselves," Hoffman says. "However, if parents don't enjoy reading, they should tell stories to their children and let the children be part of it."

Parents can also help their children participate by buying them books with accompanying tapes that ask questions, or watching educational programs with them. "Pro-

grams like Captain Kangaroo and Mr. Rogers are especially good because they seem to ask the children questions and then pause as if they are waiting for an answer," she says.

Hoffman also stresses that it is important for parents who are looking for out-of-home care for their children to find someone who is willing to read and talk with their children. "This is especially important in today's world because these youngsters are in these environments for most of their waking day — when language learning is occurring," Hoffman says.

There is no right or wrong time to read to children, Hoffman says. "Reading before bedtime is fine, but it also can be done at other times," she adds. "Most importantly, if parents want to help children become lifelong readers, they must make sure books are available and read often and regularly. In this way, children not only learn to enjoy books, but they become beginning readers."

Salary, education linked to voting trends in state

When voting on tax and bond issues during the 1980s, some Missouri counties regularly voted "yes" and other counties regularly voted "no."

A University study published in the March 1990 issue of the Governmental Affairs Newsletter examined the voting trends of the eight tax or bond issue proposals

presented to voters in Missouri during the 1980s.

"Much of the voting pattern can be understood by looking at the income levels or percentage of adults who are high school graduates in the county; counties with higher levels of income and education are more likely to vote yes," says David Leuthold, professor of political science and author of the study. "This pattern helps explain why southern counties are so much less likely to vote yes; the proportion of adults who are high school graduates is substantially lower in those counties."

Comparisons are made on the tax issues

that have been on statewide ballots because the same issues have been presented to voters throughout the state, he says.

The "yes"-voting counties are headed by Boone County, with an average "yes" vote of 62.5 percent, and St. Louis City, which averages 57.6 percent "yes" votes.

Other high-ranking counties include St. Charles, St. Louis, Jackson, Marion, Cole and Andrew. All of these counties average more than 53 percent "yes" votes.

Counties that voted "no" most frequently included Shannon, with an average "yes" vote of 31.9 percent, and Texas at 32.8 percent. Others counties that frequently voted

"no" to statewide tax and bond issues in the 1980s were Ozark, Wright, Douglas, Dade, Oregon, Dallas and Maries, all averaging less than 36 percent "yes."

Metropolitan versus rural voting was another one of the patterns noted by Leuthold. St. Louis City, St. Louis County, St. Charles County and Jackson County make up four of the six highest "yes"-voting counties. Other urban and suburban counties are lower, but most counties that are part of a metro area are in the top half of the listing.

A regional pattern also exists. Many counties in southern Missouri tend to vote "no."

Continued from Page 13.

Laun, Rolf Werner, *Veterinary Pathology*
Lawrence, Alverda Gail, *Anthropology*
Layer, Davida B., *Nursing SICU - Float*
Lindall, Maria Cristina, *Provost*
Linman, Therese Kobe, *Ob/Gyn Services*
Litwiller, Elaine Denise, *Memorial Union/Brady Commons*
Logan-Clubb, Linda A., *Nursing - Med J (4 East)*
Long, Janet Louise, *Nursing - Med J (4 East)*
Long, John, *Residential Life*
Loshbaugh, Alan J., *TV Station*
Lyons, George A., *Campus Facilities*
Marchand, Jill Ann, *Mathematics*
Martin, Rankin F., *Veterinary Diagnostic Laboratory*
Mattox, Brent S., *Environmental Health & Safety*
Mayes, Anita Ray, *Radiology*
McCullum, Mary Anne, *Student Development*
McGowan, Michael A., *Veterinary Diagnostic Lab*
McHugh, Rodnie P., *Registrar & Director of Admissions*
McKim, Cheryl Lynn, *Nursing PNU - Float*
McLaughlin, Cynthia M., *TV Station*
Mertzlufft, Kathy Ann, *Campus Dining Services*
Messerli, Robert Eugene, *Rehabilitation Counseling*
Meyer, Dennis, *Campus Facilities*
Meyer, Jacklyn Marie, *Medicine*
Miller, Richard, *Campus Facilities*
Mirielli, Rita F., *Residential Life*
Misplay, Mary Katherine, *Surgical Services*
Mitchell, Debbie, *Dean of Agriculture*
Mitchell, Mable Lou, *Campus Facilities*
Mohesky, Catherine L., *Child Health*
Morison, Alice J., *Nursing - Med J (4 East)*
Morse, Leona Ruth, *Library*
Moseley, Carol D., *Nursing Rehabilitation W (Rusk 5) Float*
Mosher, Diane Elizabeth, *Medicine*
Mountain, Barbara A., *Practical Arts & Voc. Tech. Ed.*
Musket, Paul J., *Computer Spectrum*
Naylor, J. Benton, *Agronomy*
Newton, Carol M., *Vice Provost Extension*
Nichols, Cecil Mae, *Surgery*
Nichols, Randy, *Printing Services*
Nickerson, Janice Gail, *Pathology*
Nickolaus, Adele Yvonne, *Library*
Nolte, Barbie Z., *Medicine*
Novak, Gerry David, *Campus Computing Services*
Olive, William Henry, *Radiology*
Oney, James L., *Campus Facilities*
Onofrio, Barbara Jeanne, *Sameday Surgery Center*
Ortbals, Lisa, *Pediatric Cardiology*
Ostrem, Julie M., *Editorial Department*
Overstreet, David, *Campus Facilities*
Paige, Nathaniel A., *Campus Facilities*
Palmer, Larry Edward, *Supply Distribution*
Palmer, Susan, *Anesthesiology*
Patrick, Reta, *Campus Dining Services*
Pauley, Angi Lea, *Education & Training*
Pence, Eric Leon, *Nursing Neurosurgical Unit Float*
Penton, Kimberly L., *Campus Facilities*
Perkins, Sonia A., *Housekeeping*
Persinger, Ronald W., *Memorial Union/Brady Commons*
Peterson, John E., *Campus Writing Program*
Petrillose, Judith K., *Dean of Agriculture*
Phillippe, Donna, *Nursing NICU - Float*
Pike, Sharon M., *Plant Pathology*
Pipes, Jeffery D., *Multipurpose Auditorium*
Poelling, Cheryl R., *Vice Chancellor Administrative Services*
Poore, Mark, *Nursing Rehabilitation X (Rusk 4) Float*
Powell, David E., *Campus Facilities*
Power, Cathy Lane, *Pathology*
Prater, Helen, *EEG Service*
Pritchett, Kathy J., *Vice Provost Extension*
Pruett, Kenneth R., *Emergency Suite*
Eldeib, Mohamad M.R., *Veterinary Biomedical Sciences*
Randolph, Michael L., *Research Reactor*
Rehmer, F. Elaine, *Medicine*
Rhoads, Mary K., *University Physicians Ambulatory Care*
Roberts, Sandra Rae, *Nursing - Clinical Support Svcs.*
Robinson, Kathryn Marie, *Respiratory Therapy*

Roettgen, Carl F., *Printing Services*
Rose, Sharon Kay, *Nursing CCU - Float*
Roth, Mary Ellen, *Biochemistry (Medicine)*
Rutter, E. Jane, *Office of Research*
Sapp, Mark Anthony, *TV Station*
Sarazan, Leslie A., *Dalton Research Center*
Satterlee, Susan Jo, *Family & Community Medicine*
Schler, Linda D., *Academic Support Center*
Schlotzhauer, Roderic D., *Research Support Units*
Schmocker, Gloria J., *Bookstore*
Schutte, Michele Mary, *Nursing Pediatrics - Float*
Scroggs, Catherine Cox, *Residential Life*
Scroggs, Dana Jean, *Communications Disorders Unit*
Seibert, Richard Lee, *Pharmacy*
Sessions, Sharon Ann, *Pharmacy*
Shaw, James Arrland, *Nursing Rehabilitation W (Rusk 5) Float*
Singley, Andrea O., *Health Sciences Library*
Skeene, Pamela J., *Campus Facilities*
Skjei, John M., *Safety*
Smith, Dale A., *Memorial Union/Brady Commons*
Smith, Kathleen E., *Social Services*
Snider, Leonard M., *TV Station*
Speckhals, Doris, *Health Related Professions*
Spratt, Ginger Paulette, *Medicine*
Stapleton, Jeanne, *Veterinary Medicine & Surgery*
Stariwat, Daniel, *Intercollegiate Athletics*
Stephens, Patricia Lynn, *Vice Provost Extension*
Stevenson, Lisa Embry, *Bookstore*
Stevens, Donald R., *Campus Facilities*
Stewart, Bonnie F., *Practical Arts & Voc.-Tech. Ed.*
Stiefemann, Warren, *Physics*
Stieg, John Calvin, *Campus Facilities*
Stiers, Dan L., *Campus Facilities*
Stotsky, Joyce J., *Computer Center*
Struessel, Pamela R., *Dialysis & Transplant*
Summers, Harvey, *Editorial Department*
Sundall, Michael D., *Dean of Medicine*
Taylor, Robert W., *Institutional Research & Planning*
Teerlinck, Robert, *Campus Facilities*

Terry, Lori A., *Development*
Tesoro, Salvatore F., *Pharmacy*
Tharp, Robert, *Campus Facilities*
Thomas, Lisa R., *Computer Spectrum*
Thompson, Ellen Margaret, *Nursing WHCU - Float*
Thompson, Martha A., *Health Science Inst. Rev. Bd.*
Thornhill, Susan, *Campus Facilities*
Toler, Paula M., *Student Financial Aids*
Trower, Vicki J., *School of Natural Resources*
Tucker, Valorie Jo, *TV Station*
Turpin, Timothy Allen, *Food Science & Nutrition*
Wait, Joann, *Promotions And Development*
Washington, Kim L., *Student Financial Aids*
Watson, Linda, *TV Station*
Watts, Novia Jean, *Pathology*
Wayt, Susan Marie, *Student Development*
Weber, Mary F., *Theater*
Weinhold, Keith John, *Associate Director, Professional Services*
White, Cinda S., *Supply Distribution*
Wilkes, Daryl A., *Nursing MICU - Float*
Wilkins, Roger C., *Greenley Farm*
Willett, Joanne M., *Continuing Medical Education*
Willett, Paula J., *Bookstore*
Williams, Faye A., *Student Health Services*
Wilson, Ann Elizabeth, *Pathology*
Wilson, Florence M., *Cooperative Extension*
Wilson, Larry T., *Campus Facilities*
Wilson, Twila Dawn, *Nursing Neurosurgical Unit Float*
Wirths, Tracy Jo, *Library*
Woodson, Margaret J., *Nursing SICU - Float*
Woods, Cecil C., *Student Development*
Wootton, Tammy L., *University Physicians Patient Accounting*
Wright, Kevin T., *Campus Facilities*
Wright, Paula Jean, *Family & Community Medicine*
Yarbrough, James L., *Nursing Pediatrics - Float*
Zube, Barbara Jean, *Nursing Rehabilitation X (Rusk 4) Float*

RETIREES

38 YEARS

Williams, Hazel I., *Horticulture*

36 YEARS

Lewis, George, *TV Station*
Rader, Betty, *Extension*

35 YEARS

Westbrook, Billy C., *TV Station*

31 to 34 YEARS

Hargus, Warren D., *Extension*
McCown, Dorothy, *Campus Dining Services*
Ruggles, Donald, *TV Station*

26 to 30 YEARS

Domermuth, William F., *Extension*
Ellison, William E., *Campus Facilities*
Ernsbarger, Leonard, *Extension*
Heidy, John, *Campus Facilities*
Lower, John, *Extension*
Turner, James L., *Campus Facilities*
Windsor, Carlie S., *Pathology*

21 to 25 YEARS

Ballard, Alma, *Center for Educational Assessment*
Barnett, Donald, *Extension*
Harmon, Nelda E., *Cashier/Payroll/Student Loans*
Haun, Donald L., *Extension*
Kelsay, Jessie J., *Hospital Housekeeping*
Martin, Mildred L., *Food Service*
Menzel, Robert V., *Procurement/Materials Management*
Mustain, John T., *Facilities Design & Development*
Powers, Henry C., *Campus Facilities*
Starkey, Evelyn, *Food Service*
Sweezer, Virginia P., *Surgery*
Trimble, Joan, *Cooperative Extension*

16 to 20 YEARS

Davis, John P., *Campus Facilities*

Dowell, Laverne, *Animal Science*

Flett, Glenn C., *South Farms*
Glenn, Peggy S., *Residential Life*
Hagan, Francis, *Campus Facilities*
Hannah, Elda V., *Patient Accounts*
Hatton, Josephine, *Chancellor's Residence*
Head, Felix L., *Residential Life*
Newton, Ethel V., *Infection Control*
Powell, Lester E., *Cashier/Payroll/Student Loans*
Wolff, Ida Mae, *History*

11 to 15 YEARS

Black-Morris, Juanita F., *School of Nursing*
Campbell, Vera L., *Printing Services*
Carr, Jean C., *Chemistry*
Cochran, Sam V., *Physics*
Evers, Anna Mae, *Bookstore*
Garrett, Willena, *Linen Services*
Johnson, Essie L., *Nursing MICU*
Lancaster, David L., *Campus Dining Services*
Layer, Robert W., *Campus Facilities*
Murray, Helen L., *Health Related Professions*
Neal, Ruby M., *Registrar & Director of Admissions*
Nichols, Joann, *Library*
Pierce, Jacqueline S., *Health & Physical Education*
Thompson, Robert L., *Campus Facilities*
Tuder, John J., *Plant Engineering*

5 to 10 YEARS

Brown, Patricia R., *Chancellor's Residence*
Gray, Louis E., *Vice Provost Extension*
Hagan, Dorothy P., *Student Health*
Hanvey, Mary A., *Memorial Union/Brady Commons*
Hussey, Thomas, *Office of Economic Development*
Lefler, Mary B., *Extension*
McCord, Emmett W., *Extension*
Shafer, Phyllis I., *Surgery*
Wiegert, Mary A., *Missouri Institute of Psychiatry*
Zehendner, Patricia S., *Nursing NICU*

M I Z Z O U
PEOPLE

Faculty and staff in the Instructional Materials Laboratory who participated in the annual conference of the American Vocational Association in December in Orlando, Fla., were: **Harley Schlichting**, director; **Amon Herd**, associate director; **Phyllis Miller**, assistant director; **Jack Stiefvater**, training coordinator; **Shirley Capron**, administrative associate; **Karen Smith**, chief clerk; and **Bonnie Stewart**, director of the laboratory's Missouri Vocational Resource Center.

Winners of Divisional Achievement awards at University Hospital and Clinics were: **Debbie Newkirk**, medical office assistant, Ambulatory Services; **Lynne Cooper**, executive staff assistant I, Administrative and Support Services; **Roye Lane**, clinical supervisor, Nursing Services; **Ruthann Perkins**, administrative assistant, Professional Services; **Terrie Grimes**, supervisor, Financial and Engineering Services; **Sue Hammann**, coordinator, Volunteer Services; **Roy E. Hale**, collection clerk, Patient Accounts; **Cornelia Remmele**, LPN, 5 East; **Glenn Berkey**, staff nurse III, SameDay Surgery; **Ann Cavanaugh**, custodian, Housekeeping; **Hugh Hodler**, master pipefitter, Plant

Engineering; **Karen McWhoter**, staff nurse III, 5 West; **Debbie Kesterson**, research specialist, Professional Services; **Michele Meidinger**, senior receptionist, Outpatient Clinics; **Bessie Henson**, supervisor II, Nutrition and Food Services; **Ronald K. Armentrout**, computer manager, Information Services; **Denise Dierker**, clinical supervisor, Thoracic Intensive Care Unit; **Joe Montgomery**, staff nurse III, Dialysis and Transplant; **Debbie Cesari**, chief clerk, Referral and Affiliate Services.

Staff Member of the Month awards for February at University Hospital and Clinics were presented to: **Paul Corson**, pharmacy technician II, Pharmacy Services; **Cindy Lewis**, day clinical supervisor, 6 East; **Ralph Mountjoy**, pipefitter, Facilities Design and Development; and **Evelyn King**, cook, Nutrition and Food Services.

Bob Birkenholz, assistant professor of agricultural education, was selected Outstanding Young Scholar for 1989-90 by the University Council for Vocational Education. He is chairman-elect and secretary for the research committee of the agricultural education division of the American Vocational Association.

Satish "Sam" C. Anand, professor of agronomy and soybean breeder, was selected Man of the Year for 1990 by Progressive Farmer magazine. He was recognized for his contributions toward breeding better soybean varieties, especially ones with resis-

tance to soybean cyst nematode. Anand's office is at the University's Delta Research Center in Portageville, Mo.

Theresa Boley, research associate in cardiothoracic surgery, received a certification of recognition of continuing education from the Missouri Nurses Association. The award recognizes the achievement of registered nurses who have completed a minimum of 30 hours of continuing nursing education in the past year.

John Brothers is manager of Surgery Services at University Hospital and is responsible for SameDay Surgery, Operating Room and Recovery Room. He had been director of nursing at St. Mary's Hospital in Galesburg, Ill.

Cathy Cartwright has been promoted from assistant manager of pediatrics to manager of the pediatric intensive care unit at University Hospital.

Judy Cunningham, director of the Special Education Dissemination Center, received the 1989 Outstanding Service Award from the Missouri chapter of the Council of Administrators of Special Education. She has been a member of M-CASE for 20 years.

Carolyn Dorsey, associate professor of higher and adult education and foundations, is president of MU's Black Faculty and Staff Organization.

Sadia Groves, prepress, was selected Employee of the Month for March at Printing Services.

Semen Donors
Needed

LABORATORY FOR FERTILITY AND CRYOBIOLOGY

The Laboratory is seeking semen donors for its sperm bank program. The program is confidential and all donors will be compensated.

As a potential donor you will undergo non-invasive screening procedures to ensure good health and fertility potential. You must be between the ages of 21 and 35. If you are interested, please call 882-7199.

MINORITIES ARE NEEDED



Special of the Week:

HAWTHORN



lower level
Memorial Union
Mon-Fri: 11:30-1:15

Thursday Special: April 5

1/2 Ham & Swiss \$3.79
Sandwich, Cup of Soup,
Perrier. Reg. \$4.18:

Monday Special: April 9

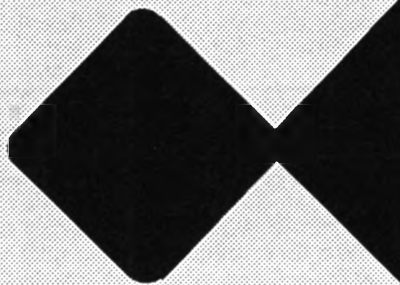
Hamburger Entree & Salad
Reg. \$6.95: \$5.95
Plus, a **FREE** dessert

Reservations: 882-7407 VISA, MASTERCARD, IDOS,
& E.Z. CHARGE ACCEPTED

PARKING AND TRANSPORTATION SERVICES

107 SWALLOW

882-4568



Staff Recognition Week
April 9-13, 1990

For your convenience while attending activities, staff parking permits from any lot will be honored in the University Avenue garage and in WC6, the surface parking lot west of the garage.

The Staff for Life at
University Hospital and Clinics
is proud to participate in

Staff Recognition
Week '90,
April 9-13

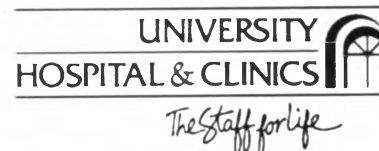
Hospital-sponsored activities include:

April 10

FREE cholesterol screening from 9 a.m. to 3 p.m. for blood donors at the Red Cross Blood Drive, Student Lounge, Memorial Union.

\$65 Mobile Mammography Screening from 9 a.m.- 3 p.m. A mobile mammography unit will be parked in front of the Memorial Union. Cash, check, MasterCard, Visa. Call Women's Health Center at 882-2122 to schedule a mammogram.

Early detection and treatment give you the best chance for curing breast cancer.



CALENDAR

Send calendar items in Campus Mail to Billy Sledge, Mizzou Weekly, 1100 University Place, by noon Tuesday the week before publication.

Events are free and open to the public unless otherwise noted.

Highlights

CONCERT SERIES: Pianist Paul Ostrovsky, violinist Piotr Milewski and cellist Leo Grinhauz, members of the New York Amati Trio, will perform at 8 p.m. April 5 in Jesse Aud. Cost: \$12. Call 882-3781.

TAP DAY: Ceremony recognizing MU honor society members will be at 9:30 a.m. April 6 on Francis Quadrangle.

SOVIET UNION LECTURE: Michael Epstein, professor at the Moscow Literary Institute, will present "Intellectual Trends in Today's Soviet Union: Literature, Religion, Ideology" at 3 p.m. April 6 in 233 Arts and Science Bldg.

3 Tuesday

EDUCATION WEEK: Activities will continue through April 6 in Townsend Hall.

SUMMER CAMP: Registration is being taken for the Intramural/Recreation Department's first summer sports camp for children of faculty and staff. Sign up in 106 Rothwell. Cost: \$110 for two-week session. Registration deadline is May 7.

WOMEN'S TENNIS: Tigers will play Kansas at 10 a.m. on the College Avenue courts.

MEN'S TENNIS: Tigers will play Kansas at 1 p.m. on the College Avenue courts.

BASEBALL: Tigers will play Northwest Missouri State University at 4 p.m. on Simmons Field.

MASTER PLAN HEARINGS: Open forums on the University's long-range plan for physical improvements will be at noon in Memorial Union Aud., and at 4:30 p.m. and 7 p.m. in 7 Law Building.

AGRONOMY AWARD BANQUET/ SEMINAR: The Department of Agronomy will hold its annual Sigma Xi Research Award Banquet and Seminar at 7 p.m. in N201-202 Memorial Union. George Redei, professor of agronomy and recipient of the Sigma Xi Research Award, will present "Ultimate Genetic Analysis. Almost." Cost: \$12. Call Gene Iannotti at 882-7410.

FACULTY RECITAL SERIES: Sue Stubbs will perform on the string bass at 8 p.m. in the Fine Arts Recital Hall.

4 Wednesday

STAFF COUNCIL: Group will meet at 10 a.m. in the Jesse Aud. foyer. Meeting replaces April 12 session.

PROVOST: Provost Lois DeFleur will have open office hours for faculty, staff and students from 3-5 p.m. in 114 Jesse Hall.

PHYSICS AND ASTRONOMY COLLOQUIUM: George Trammell, professor of physics at Rice University, will

speaking at 4 p.m. in 120 Physics Bldg.

WOMEN'S CENTER: A program, "Speaking As Equals," will be presented at 7 p.m. in 229 Brady Commons.

MSA/GPC FILM: "Stand By Me" will be shown at 8 p.m. in Ellis Aud. Cost: \$1.

STUDENT ENSEMBLE SERIES: Trombone Ensembles, under the direction of Assistant Director of Bands Jeffrey J. Lemke, will perform a "Slide Show" at 8 p.m. in the Fine Arts Recital Hall.

5 Thursday

WOMEN'S CENTER: A program, "Women in Sports," will be presented at noon in 229 Brady Commons.

ART/ARCHAEOLOGY LECTURE: Cissy Grossman, museum consultant and freelance curator, will present "Curator as Detective: Uncovering Meaning in an Object by Sign and Symbol" at 7:30 p.m. in 106 Pickard Hall.

CONCERT SERIES: See Highlights.

6 Friday

HEARNES CENTER: The Mizzou 4H Conference will be through April 7 at the Hearnes Center.

TAP DAY: See Highlights.

WOMEN'S TENNIS: Tigers will play Iowa State at 10 a.m. on the College Avenue courts.

MEN'S TENNIS: Tigers will play Iowa State at 1 p.m. on the College Avenue courts.

MIP VISITING SPEAKER SERIES: The Missouri Institute of Psychiatry will present William H. Coryell, professor of psychiatry at the University of Iowa, to speak on "Biological Markers and Clinical Course" at 1 p.m. in Kohler Aud., 5400 Arsenal St., St. Louis.

IPC EVENT: The international programming committee will sponsor an International Coffee Hour from 2:30-4:30 p.m. in the lower level of Brady Commons.

SOVIET UNION LECTURE: See Highlights.

DEPARTMENT OF ENTOMOLOGY SEMINAR: "Effect of Cultural Practices on Populations of Cucumber Beetles on Melons" will be presented at 2:40 p.m. in 2-16 Agriculture Bldg.

PSYCHOLOGY COLLOQUIUM: Steven Petersen, of the Washington University department of neurology and neurological surgery, will present "Positron Emission Tomography Studies of Visual Selective Attention" at 3:40 p.m. in 108 Geology Bldg.

BASEBALL: Tigers will play Oklahoma State at 7 p.m. on Simmons Field.

MSA/GPC FILMS: "When Harry Met Sally" will be shown at 7 and 9:30 p.m. in Ellis Aud. Also, "This Is Spinal Tap" will be shown at midnight in Ellis Aud. Cost: \$2.

SPECIAL MUSICAL EVENT: The Symphonic Wind Ensemble and the University Choral Union will perform,

under the direction of Dale J. Lonis and Gregory Fuller, at 8 p.m. in Jesse Aud.

7 Saturday

HISTORY DAY: Event for junior-high and high-school students in Missouri will be all day on campus. Awards ceremony will be at 5 p.m. in Jesse Aud.

RESEARCH AND CREATIVE

ACTIVITIES FORUM: The Graduate Professional Council will be the host for this day-long event in Memorial Union, Gwynn Hall and the Bingham Gallery in the Fine Arts Building. Opening address will be at 8:20 a.m. in N222-223 Memorial Union. An awards ceremony will be at 4:30 p.m. in the gallery.

WOMEN'S CENTER: A workshop, "Dependency in Relationships," will be from 9 a.m.-noon in 229 Brady Commons. Call 882-6549 to register.

RECREATION/INTRAMURALS: Weight training for runners will be offered from 9:15-11:15 a.m. in 301 Brewer. Cost: \$3. Limit 18 people. Call 882-2066.

WOMEN'S TENNIS: Tigers will play Missouri Southern at 10 a.m. on the College Avenue courts.

MEN'S TENNIS: Tigers will play Nebraska at 1 p.m. on the College Avenue courts.

BASEBALL: Tigers will play Oklahoma State at 4 p.m. on Simmons Field.

EDUCATION BANQUET: The College of Education will have its annual alumni awards banquet at 6:30 p.m. in Memorial Union. Call 882-5118.

MSA/GPC FILMS: "When Harry Met Sally" will be shown at 7 and 9:30 p.m. in Ellis Aud. Also, "This Is Spinal Tap" will be shown at midnight in Ellis Aud. Cost: \$2.

SERENADE IN BLUE BALL: This event, featuring dancing to music from the 1940s and '50s, will be at 8 p.m. at the Columbia Country Club, 2210 Country Club Drive. Cost: \$25. Call 882-2606. Music provided by the Studio Jazz Ensemble. A breakfast buffet will be served at 11 p.m.

8 Sunday

B&PA WEEK: Business and Public Administration Week events will continue through April 14. Call 882-4562.

HES WEEK: Human Environmental Sciences Week events will continue through April 13. Call 882-6424.

BASEBALL: Tigers will play Oklahoma State at 1 p.m. on Simmons Field.

MSA/GPC FILM: "Gaslight" will be shown at 8 p.m. in Ellis Aud. Cost: 50 cents.

STUDENT ENSEMBLE SERIES: A percussion ensemble concert will be given under the direction of Tom Wubbenhorst at 8 p.m. in Jesse Aud.

9 Monday

LATIN AMERICAN WEEK: Activities will continue through April 13, including an arts and crafts exposition and information tables in Brady Commons and Memorial Union.

STAFF RECOGNITION WEEK: A blood drive sponsored by Staff Advisory Council

will be from 9 a.m.-3 p.m. in the Memorial Union Lounge.

ASSESSMENT: A mini-conference on assessment, featuring faculty from various disciplines on campus, will be from 9 a.m.-3 p.m. in N208 Memorial Union.

WOMEN'S TENNIS: Tigers will play Nebraska at 10 a.m. on the College Avenue courts.

WOMEN'S CENTER: A program, "Different Ways," will be presented at noon in 229 Brady Commons.

STAFF RECOGNITION WEEK: Awards ceremony will be at 2 p.m. in Jesse Aud. Employees with five, 10, 15, 20, 25, 30 and 35 years of service will be recognized.

BIOCHEMISTRY RESEARCH SEMINAR: Jan Miernyk of the Northern Regional Research Center will present "The Targeting of a Plant Cytoplasmic Proteins to the Bacterial Outer Membrane" at 3:40 p.m. in 322 Chemistry Bldg.

SOLID STATE SEMINAR SERIES: Talat Rahman, professor of physics at Kansas State University, will speak at 4 p.m. in 120 Physics Bldg.

MSA/GPC FILM: "La Lectrice" will be shown at 8 p.m. in Ellis Aud. Cost: \$1.

MSA/GPC EVENT: The Cousteau Society will present a program on the environment at 8 p.m. in Jesse Aud.

FACULTY ENSEMBLE SERIES: The Missouri Arts Quintet will perform at 8 p.m. in the Fine Arts Recital Hall.

10 Tuesday

RECREATION/INTRAMURALS: Entries for women's tennis doubles will close. Play begins April 17.

LATIN AMERICAN WEEK: "Latin America Through the Eyes of a Foreigner," a photo exhibit, will be on display from 9 a.m.-1 p.m. in Brady Commons and Memorial Union. The film "La Ciudad y los Perros" will be shown at 7:30 p.m. in Middlebush Aud.

HEARNES CENTER: The sixth annual Society of Manufacturing Engineers Tool and Equipment Expo '90 will be from 11:30 a.m.-7 p.m. at the Hearnes Center. Cost: \$3.

UNDERGRADUATE EDUCATION SEMINAR: Gary Smith, director of Admissions and Registrar, will present "What Effect Have Scholarships Had at MU?" at noon in S206 Memorial Union.

WOMEN'S CENTER: A feminist Passover celebration will begin at 6 p.m. at a location to be announced. Call 882-6549.

STUDENT ENSEMBLE SERIES: The Concert Band will perform, under the direction of Director of Bands Dale J. Lonis, at 8 p.m. in Jesse Aud.

EXHIBITS

HISTORICAL SOCIETY: The work of "Artists of the Mid-1900s" will be on display in the society's corridor gallery through April in the east end of Ellis Library. Hours: 8 a.m.-4:30 p.m. Monday-Friday and 9 a.m.-4:30 p.m. Saturday, except holidays.

MUSEUM OF ART AND ARCHAEOLOGY: "Word and Image: The Art of Illuminated Manuscripts and Early Printing" will be on display through April 9 in Pickard Hall.

University Libraries
University of Missouri

Digitization Information Page

Local identifier MizzouWeekly(print)

Source information

Format Newspaper
Content type Text with images
Source ID Duplicate copies University Archives weeded out
Notes

Capture information

Date captured July-December, 2022
Scanner manufacturer Plustek OpticBook
Scanner model A300 Plus
Scanning system software Book Pavilion
Optical resolution 600 dpi
Color settings 8 bit grayscale for majority of pages;
 24 bit color for color illustrations/portraits/photographs
File types tiff
Notes

Derivatives - Access copy

Compression Tiff: LZW compression
Editing software Adobe Photoshop 2022
Resolution 600 dpi
Color same as captured
File types pdf created from tiffs
Notes Images cropped, straightened, and brightened.