

# MIZZOU

W E E K L Y

University of Missouri-Columbia / Oct. 23, 1991

## Budgets hit again

*Position openings and travel to be affected as MU tries to meet Oct. 1 funds shortfall.*

The latest actions taken by MU officials in dealing with budget problems may not affect all faculty and staff. But that doesn't mean the reductions will be painless.

"Basically, the deans are taking the hit," says Provost Gerald Brouder. "Not all departments across campus will feel the effects. Also, many of these moves are cash savings this year, not permanent cuts."

The University must come up with \$4.1 million to offset a 3 percent state withholding, announced by Gov. John Ashcroft earlier this month. Chancellor Haskell Monroe says the shortfall will be made up, in part, with:

- A one-time savings of \$400,000 from a partial hiring freeze, which took effect Oct. 2;
- \$1.8 million from a one-year delay in construction projects at Gentry Hall and the straightening of Maryland Avenue;
- \$1.5 million from shifting the costs of extension continuing education programs from MU to users, a permanent reduction;
- A \$100,000 permanent reduction in support for athletic programs;
- A one-time \$100,000 cut in non-faculty travel; and

- \$240,000 in one-time savings from the emergency reserve fund.

Two areas that will affect most divisions on campus are the partial hiring freeze and the cutback on non-faculty travel. Monroe says vacant positions should remain open "unless sufficient justification can be shown for filling them." For non-academic units, the final decision rests with the vice chancellors.

On the academic side, Brouder has asked the deans to return to his office one month's savings on all vacancies. After that month passes, they can begin recruiting for the job. Brouder then will review all openings to see which should be filled first — if at all.

"Let's say, for instance, that a department wants to hire a research associate for \$24,000," Brouder says. "They would have to wait a month before advertising, and return \$2,000 to us. After they recruit and decide on their finalist, our office will decide whether the job can be offered."

Whether that person would be hired could depend on another matter: the possibility of an additional state withholding this winter. "That's a concern as well," Brouder says. "The closer we get to July, the more we'll know about our finances."

Regarding travel, non-academic units must cut back 10 percent. For non-faculty travel in academic units, Brouder will assign a dollar savings amount to each dean, to be returned to his office. "It will be up to them to decide how to distribute the rest," Brouder says. "We're talking here mostly

### ON THE INSIDE

Page 2 Campus parking fees will not increase this year, committee told.

Page 3 The Department of Theater's new presentation is a sophisticated Stephen Sondheim musical.

Page 4 The University's United Way campaign reaches 51 percent.

### Important dates coming up this fall:

- Oct. 27** Daylight Savings Time ends at 2 a.m.
- Oct. 31** Haunted House of Hoops, a Halloween party and basketball scrimmage, will be at the Hearnes Center.
- Nov. 5** Polls open for vote on Proposition B.

about travel by people such as associate deans. We don't want to cut into Staff Development Award money."

The real problem with the budget cuts, Brouder says, is in the area of extension continuing education, where the \$1.5 million reduction is a substantial portion of the \$2.2 million budget. Don Fancher, associate vice provost for extension, says his division is meeting with the deans to see what areas could be cut. A report will be presented to Brouder Nov. 8.

"We're trying to find answers that will cause the least amount of damage," Fancher says. "But there's no way we can make these reductions without cutting people and programs."

The plan, he notes, is to shift the cost of continuing education programs to the users — people ranging from nurses and firefighters to librarians and farmers. "Many of these people can't afford it, though," Fancher says. "Some programs won't make it on their own, and we will not be fulfilling our true land-grant mission."

Fancher says the budget cuts have put extension officials in an uncomfortable position. "We want to support the administration," he says. "But it's taken years to build these programs, and these cuts have serious implications for us. We're trying to be positive about it."

## Repairing the base

*Proposition B would benefit all areas of campus.*

Departments such as Campus Facilities would join academic units in benefiting from Proposition B, a University task force was told Oct. 15.

"If this passes, all the money the first year

will go for repair and maintenance of buildings and equipment," Paulletta King, chairwoman of the Staff Advisory Council, told members of MU for Missouri's Future at a meeting in the Memorial Union. "That directly benefits units such as Campus Facilities. It helps our staff."

"We're happy, of course, that academic units will gain the most from Proposition B," said King, administrative associate II at the Veterinary Diagnostic Lab. "But we want to make the point that it will help the entire campus."

Proposition B, a \$385 million reform and funding package for education, will go before Missouri voters Nov. 5. A total of \$190 million would be allocated to higher education in the state, with the funds earmarked for

such purposes as program improvements, minority scholarships, research grants and maintenance and repair.

The bill specifies that first-year monies, which would begin coming to the universities in 1992, would go for maintenance and repair while the institutions developed their mission statements. After that, annual maintenance and repair funds throughout the state could range from \$13 million to \$48 million, depending on the General Assembly and the sale of revenue bonds.

The benefits to MU also were stressed at a Proposition B forum Oct. 16, sponsored by the Department of Higher and Adult Education and Foundations. More than 100 faculty, staff and students jammed a room in the Memorial Union to hear the discussion, of-

fered as a highlight of Higher Education Week.

"There are four things we need," said Rob Logan, associate professor of journalism and chairman of the Faculty Council. "Building renovation, a new layer of scholarships, matching funds for research grants, and program enhancement. Proposition B would give us all those things."

Chancellor Haskell Monroe told the group that if Proposition B passes, other needs such as social welfare and mental health would have a better chance of being met in the coming years. "If we can pass this for education, perhaps we could turn around and help others pass legislation," Monroe said. "But it makes you wonder: If education is defeated, what other areas stand a chance?"

## Absentee ballots available by mail

Faculty, staff and retirees who may be out of town on Nov. 5 may use the accompanying form to request an absentee ballot from their county clerk.

In Boone County, the completed form should be sent to Wendy S. Noren, County Clerk, 701 E. Broadway, Columbia, Mo. 65201.

"The earlier we receive the requests, the better," says Art Auer, director of elections in Boone County. "If you think you may be out of town on Nov. 5, go ahead and request a ballot now." All requests must be received by Oct. 30. "That gives us time to mail out a ballot and get it back by 5 p.m. Nov. 5," Auer says.

As of Oct. 16, Auer's office had received 165 requests for absentee ballots. "That's not bad for a special election," he adds. The clerk's office is open from 8 a.m. to 5 p.m. Monday through Friday for walk-in absentee voting.

If the county's voter turnout on Nov. 5 is light, it won't be because the Associated Students of the University of Missouri is neglecting its duties. The group led an eight-week drive which resulted in 5,562 faculty, staff, students and retirees registering to vote. That's the most ever registered on campus in a single drive, and more than double the number ASUM registered for the 1988 presidential election. "We're very, very pleased," says Coordinator Mary Anne McCollum.

### Application for Absentee Ballot

I, \_\_\_\_\_, do hereby state that I maintain a permanent residence at \_\_\_\_\_ in the city of \_\_\_\_\_, county of \_\_\_\_\_, state of Missouri.

I further state that I am a registered voter at that address, but for the reason of absence from the county due to out-of-town business, I will be unable to vote at my polling place at the special election to be held Tuesday, Nov. 5, 1991.

I therefore request an absentee ballot, to be forwarded to the following address:

\_\_\_\_\_  
\_\_\_\_\_  
\_\_\_\_\_

Legal Signature \_\_\_\_\_

This form does not require notarization. It must be received by the county clerk's office no later than 5 p.m., Oct. 30, 1991. With questions, call 874-7518.

**PROPOSITION B  
RALLY OCT. 31**

The MU community is invited to an Oct. 31 rally in support of Proposition B.

The event, sponsored by the Missouri Students Association, will begin at 1 p.m. at Jesse Hall and will move to Lowry Mall, says David Ridley, MSA president. "We realize that most staff will be working at 1 p.m.," says Pulletta King, chairwoman of the Staff Advisory Council. "But if there's any way you could alter your lunch schedule to attend, it would be great."

Proposition B, to be voted on Nov. 5, would raise \$385 million for education in Missouri.

**PUBLICATION  
BOOSTS MIZZOU**

A new publication, *Educating Missouri to a Higher Degree*, tells of the high-quality teaching, research and service efforts at MU.

The 22-page publication was produced by University Relations. It could be used as a handout by faculty and staff speaking to groups on Proposition B between now and Nov. 5.

Copies are available from the Visitor Relations office at 882-6333.

**PANEL TO EXAMINE  
SEXUAL HARASSMENT**

The nation was caught up in the recent Senate confirmation hearings of Clarence Thomas, and some MU people want to talk about it.

A forum, "Sexual Harassment: What Can We Learn from the Thomas-Hill Dispute?" will be presented at 7 p.m. Oct. 24 in 5 Hulston Hall, Law School. Speakers will include Karen Touzeau, assistant vice chancellor for Personnel Services/Affirmative Action; Sharon Welch, director of Women Studies; and Law Professor Nanette Laughrey.

The forum is being presented by MU's status of women committee. The public is invited, and there will be ample time for discussion.

**SCARE 'EM WITH THESE**

The Horticulture Club will have a fall pumpkin and plant sale from 8 a.m. to 5 p.m. Oct. 24 in Greenhouse 16, next to the Physics Building.

Pumpkins in all sizes and price ranges will be available, along with a wide assortment of tropical and foliage plants. Wreaths and corn arrangements also will be sold.



# Parking fees

## No increase expected this fiscal year

Even before the new Turner Avenue garage opened in August, Jim Joy was fielding questions about when the next garage would be built. At an Oct. 17 meeting, Joy, director of Parking and Transportation Services, told members of the parking advisory committee that campus planners will decide when and where another garage will be built.

He noted that the MU parking operation is fully funded by parking fees paid by faculty, staff and students. "We won't start anything

until we can pay for it," Joy said. "We're not looking for any parking fee increases until something improves with salaries, and that won't be this year."

Joy said the new garage has had a "domino effect" on parking across campus. "We opened with 1,300 spaces on a lot that two years ago held 300 spaces," he said. "The actual effect of it is that in the core area of campus, we had 700 more student spaces this September than we had a year ago. I was able

to assign 100 percent of the graduate teaching and research assistants who requested a space. I hadn't been able to do that for maybe five years."

Committee Chairwoman Bettyann Dubansky, associate professor of social work, noted the important job the committee performs. "Parking runs neck and neck with salaries as far as the feelings and emotions it generates," she said.

Dubansky outlined some issues that she suggested the committee address this year. She asked members to look at differential parking fees based on salaries, with lower-paid employees paying less for parking. Dubansky also suggested that the committee review the hours that parking lots are restricted. Several faculty and staff members have complained about not being able to find a space in their regular lot when they return to campus in the evenings.

Other members of the parking advisory committee this year are Harold Kerr, associate professor of agronomy; Verna Rhodes, associate professor of nursing; Dudley McCaw, associate professor of veterinary medicine and surgery; Ralph Anderson, professor of animal science; Stephanie Coffman, marketing representative in Procurement/Materials Management; and Debra Jones, administrative assistant in Faculty and Staff Benefits.

Student members are Rob Rebman, representing the MSA; and Thomas Davis, representing the Graduate Professional Council. Ex officio members are Joy; Don Graham, associate director of Residential Life; Ron Mason, director of University Police; Tommy Carter, assistant operations director for support services at University Hospital and Clinics; and Shirley Delbert, coordinator of Visitor Relations.

## CLASSIFIEDS

**FOR SALE**

**SIX-FOOT TUXEDO COUCH**, like new, \$120. Antique Victorian medallion-back love seat and matching gentleman's chair, \$1,000. Duncan Phyfe couch and matching chair, \$175. Call 874-2619 (recorder).

**BALDWIN PIANO**, walnut console, excellent condition, \$1,300. Pentax video 8mm camcorder, all attachments, carrying case, 2 years old, \$650. 443-6489 after 6 p.m., leave message.

The Classified Advertising Section is open to faculty and staff members and retirees. A home phone number is required in all ads.

**Rates:** 30-word maximum \$3

**Publication deadlines:** Oct. 28 for Nov. 6 issue; Nov. 4 for Nov. 13 issue

**Mizzou Weekly Classifieds:** Make check payable to University of Missouri. Send to: Mizzou Weekly, 1100 University Place.

**Lectures focus on culture**

The Cultural Heritage Seminar is a new lecture series that will present current research in interdisciplinary cultural studies.

The series begins today at 3:40 p.m. in 22 Tate Hall with a talk by Howard Marshall, director of the Cultural Heritage Center and professor of art history and archaeology. Marshall will speak on "The Vicissitudes of Kinship: Vernacular Architecture in the Lowlands of Scotland (and Missouri)."

Talks will be given each month. The series is sponsored by the Cultural Heritage Center, the University Assembly Lecture Series and by the Center of Studies in Oral Tradition. With questions, call 882-6296.

## Business Services seminars scheduled

Business Services is conducting a series of seminars in upcoming weeks to explain some of the intricacies of running the University.

"We invite all faculty and staff unfamiliar with Business Services to attend," says Director Jackie Jones. "We especially welcome newcomers, for whom these sessions make a good orientation."

Jones emphasizes that pre-enrollment is necessary, and can be completed by calling 882-4859. The enrollment deadline is Oct. 30.

The seminar schedule follows:

**Nov. 4**

**Payroll**, 9-10 a.m. — Designed for relatively new staff members who are involved in processing departmental or divisional payrolls.

**Business Services**, 10:30-11:30 a.m. — Learn about service agreements, including consulting and honorariums, as well as the reporting procedures on accidents and incidents for insurance purposes, and guidelines and procedures for temporary use of facilities.

**Travel**, 1:30-3:30 p.m. — Learn how to make the most of your departmental travel budget, including special discounts available on airfare, hotels and rentals cars.

**Nov. 5**

**Mail Services: Mail List Management**, 8:30-10 a.m. — Learn about MU's new mailing list management program that can save money and time for your department.

**Telecommunications**, 10:30 a.m.-noon — Hear about voice, data and video services provided by Telecommunications, including telephone features that can save you time.

**Printing Services**, 1:30-3 p.m. — Learn about graphic design, electronic publishing,

full-service printing and other facets of Printing Services.

**Environmental Health and Safety**, 1:15-2 p.m. — Learn about radiation safety, hazardous materials, industrial hygiene and fire safety.

**Nov. 6**

**Mail Services: Inserting**, 8:30-10 a.m. — Learn how to use the new inserter that produces mail from continuous computer-generated letters, resulting in savings for your department.

**Procurement/Materials Management**, 10:30-11:30 a.m. and 1:30-4:30 p.m. — Learn about the wide variety of services available through this department, including purchasing, on-line requisitioning, the minority and women business enterprise purchasing program, General Stores, inventory systems, and surplus property recycling.

**Nov. 7**

**Accounting Services: Forms**, 8:30 a.m.-noon — Learn how to complete accounting forms.

**Accounting Services: Reading FBM 90/91**, 1:30-5 p.m. — Learn how to read and interpret monthly accounting reports.



For more information, contact:  
Project ADAPT  
205 Brady Commons  
882-4634

**October 23:**

"Strassenfest," German street festival, Lowry Mall, 3 to 5 p.m. **FREE FOOD.**

**October 24:**

Mock date rape trial, Law School Courtroom, 7 p.m.

**October 25:**

Self Esteem Workshop, George Obermeier, topics will include substance abuse, abusive relationships and eating disorders, Campus Inn, 9 a.m. to 4 p.m.

# MIZZOU

WEEKLY

Vol. 13

No. 8

A publication of the University of Missouri-Columbia faculty and staff, published every Wednesday during the academic year and twice a month during the summer by Publications and Alumni Communication, a department of Development, University and Alumni Relations Division, 1100 University Place, 882-7357. News deadline is noon Wednesday the week before publication. Annual subscriptions are available for \$20.

Editor: Terry Jordan

Assistant editor: John Beahler

Staff writer: Sue Richardson

Advertising coordinator: Michelle Burke

Relief designer: Larry Boehm

## GOBBLE UP THIS DEAL

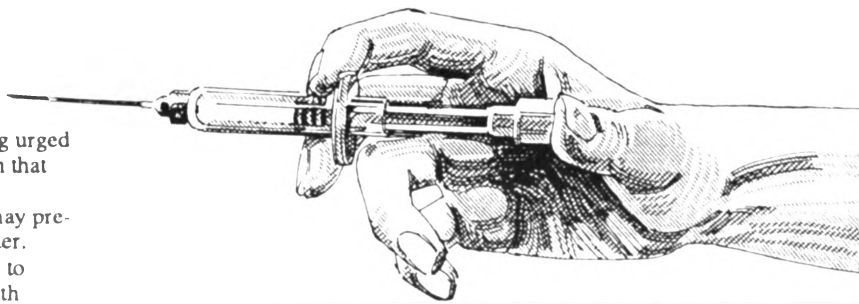
How about a fresh turkey for Thanksgiving?

The Block and Bridle Club is taking orders for turkeys. The birds are available in sizes from 10-14 pounds, 16-20 pounds, or 20-24 pounds, at 99 cents a pound. Orders may be placed on Tuesdays, Wednesdays and Thursdays through Oct. 31 by calling 882-4277, or in the evenings, 474-1959.

## FRESHMEN NEED MEASLES SHOTS

Faculty and staff are being urged to remind first-time freshmen that they must receive measles immunizations before they may pre-register for the winter semester.

The shots are offered free to freshmen at the Student Health Center and may be obtained by others for \$5, says Ann Nadler, health center manager. Freshmen may pre-register from Oct. 28 through Nov. 15.



## Science education center dedication set

A formal dedication ceremony and a symposium on science education will highlight the inauguration of the College of Education's new Southwestern Bell Foundation Science Education Center Nov. 1 and 2.

Located on the ground floor of Townsend Hall, the center was made possible by a \$1 million grant from the Southwestern Bell Foundation. The center will pioneer the use of the latest telecommunications equipment to teach science more effectively.

The featured speaker at the symposium will be Robert E. Yager, professor of science education at the University of Iowa and an expert on science teaching. Yager will speak on "The Forces Shaping Science Education Change" at 4 p.m. Nov. 1 in Townsend Auditorium.

Following Yager's talk, public tours of the science center will be offered. At 6 p.m., a reception and dinner will be held in N214-215 Memorial Union. At the dinner, Yager will speak on "The Basis for Science Education Reform."

The science center will be dedicated in a ceremony at 10 a.m. Nov. 2 in Townsend Hall. There will be remarks from Chancellor Haskell Monroe; Robert Dollar, interim dean of education; and representatives of Southwestern Bell Corp.

## Rolling along Theater presentation a sophisticated musical

You don't have to be a seeker of knowledge to enjoy *Merrily We Roll Along*. But it might help.

"This is one of the most serious musicals we've staged here," says director and associate professor Jim Miller. "It's not a comedy."

*Merrily We Roll Along* has music and lyrics by Stephen Sondheim, who also wrote *A Little Night Music* and *A Funny Thing Happened on the Way to the Forum*. This play, Miller says, contains two of Sondheim's most engaging ballads: *Not a Day Goes By* and *A Good Thing Going*.

It also has an intriguing plot. The year is 1980, and Franklin Shepard, a Hollywood mogul, returns to his old high school to deliver the commencement address. "He tells the students to forget their grand ideals and settle for reality instead," Miller says.

But then the play goes back in time, tracing Shepard's life and the lives of two

friends from 1980 to 1957.

"We see what happened to Shepard along the way — to his hopes, his dreams, his ideals," Miller says. "On the surface, he's a success in Hollywood. But he's also been through three wives and has a drinking problem. As we go back, we wonder: How successful is he really?"

The play is a challenge for the entire company, which must recreate scenes ranging from the sophisticated 1980s to the innocent 1950s. It's a special challenge for the three main characters: Dan Sullivan as Shepard, Chris Faith as Charlie, his songwriting partner, and Jennifer Davis as Mary Flynn, their friend.

*Merrily We Roll Along* is also a personal challenge for Miller, who turned 42 earlier this year. "It's a good mid-life play," he says. "It will make you wonder, 'Have I done everything in life that I'd like to do?'"

*Merrily We Roll Along* will be presented at the Rhynsburger Theater at 8 p.m. Oct. 24 through 26 and Oct. 31 through Nov. 2. There also will be a 2 p.m. performance Oct. 27. Tickets are \$6 for faculty, staff and retirees, and may be reserved by calling 882-7529.

## OPEN HOUSE

Ellis Fischel Cancer Center cordially invites you to an open house with

## MARCIA WALLACE

who starred in the first "Bob Newhart Show" and the voice of Mrs. Krabappel, Bart Simpson's teacher on the hit TV series, "The Simpsons."

**1 p.m., Sunday, Oct. 27**  
**Ellis Fischel Cancer Center**

Help us celebrate the first anniversary of Ellis Fischel's merger with the University of Missouri Health Sciences Center. Meet Ms. Wallace, a breast cancer survivor, who brings witty insight to a painful, yet relevant issue facing one out of every three people — cancer. Her humor and bright personality in light of personal hardship have made her a role model for cancer patients everywhere.

Join The Staff for Life at Ellis Fischel Cancer Center and Ms. Wallace in celebrating Ellis Fischel's tradition of providing quality cancer care and treatment.

- 1 p.m. Entertainment by Ms. Wallace
- 1:30 p.m. Autographs signed by Ms. Wallace
- 2 p.m. Ellis Fischel tours, refreshments and door prizes

 **Ellis Fischel  
Cancer Center**  
*The Staff for Life*

October is Energy Awareness Month...and Campus Facilities and KOMU-TV 8 are celebrating with the 1991

## Energy Extravaganza

**Wednesday, Oct. 30**

**10 a.m. to 3 p.m.**

**Brady Park**

(under the tents between **Ellis Library** and **Brady Commons**)

Come see the latest in energy technology, energy saving tips, etc. from local, regional and campus energy-minded groups. Find out what is happening on campus and elsewhere, learn how you can save energy at home and at the office, play games, win prizes and have fun.





## Join us for an Afternoon of Rare Masterpieces

Mozart and His Rival Righini, An Afternoon of Bel Canto  
Presented by University Concert Series



Costanza Cuccaro, soprano  
performing with:  
Linn Maxwell, mezzo-soprano  
James McDonald, tenor  
William Parker, baritone

Free Concert Preview:  
Sunday • October 27 • 2 p.m. • Whitmore Recital Hall  
Performance:  
SUNDAY • OCTOBER 27 • 3 P.M. • JESSE AUDITORIUM  
Tickets \$15 Public • \$12 Students  
Jesse Box Office Open 10 a.m. - 4 p.m. • Oct. 24 & 25  
& one hour before the performance • 882-3781

TICKETS ON SALE NOW:  
MSA Box Office Brady Commons 882-4640  
First National Bank 8th & Broadway and Columbia Mall locations  
KBIA 409 Jesse Hall 882-9136

UNIVERSITY OF MISSOURI-COLUMBIA  
**CONCERT SERIES**  
JESSE AUDITORIUM SERIES



## MIZZOU CU ATM puts you in control



MCU member Gordie Afdahl uses his MCU ATM card at the new ATM location on Stephens College.

### Campus Locations

**UMC Campus**  
Brady Commons-north side  
**Stephens College**  
Stamper Commons

### Columbia Office Locations

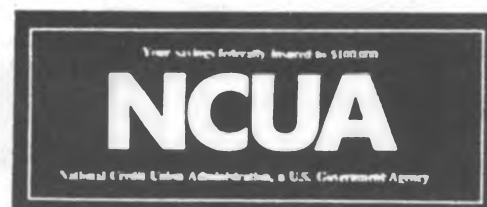
**1st & Broadway**  
west side of MCU office  
• One walk-up  
• Two drive-ups

### Hospital Locations

**University Hospital & Clinics**  
#1 Hospital Drive  
**Columbia Regional Hospital**  
404 Keene  
**Boone Hospital Center**  
1600 E. Broadway  
(visitors & employees only)

### In This Issue:

- ☐ PD Round Up Winner! ..... 2
- ☐ Reg E Annual Disclosures..... 2
- ☐ Hal-O-Gram..... 3
- ☐ Mizzou CU ATM Locations ..... 4
- ☐ Mizzou Locations & Hours ..... 4



Look for these symbols for additional ATM service



## Lending a hand

*Mizzou students, employees benefit from day care centers funded through the United Way.*



Youths at the Ripley Children's Center, a United Way agency, benefit from guidance provided by MU students.  
Tammy Atkins photo

The University's participation in the Columbia Area United Way campaign not only represents its commitment to community service, but helps MU continue its educational service, too.

Students interested in early childhood development in the College of Human Environmental Sciences are receiving real-life experience at Columbia's Community Nursery Schools. These schools, Ripley Children's Center, Hinkson Children's Center and Hinkson Infant Toddler Center, provide professional, state-accredited preschool education. The schools receive 19 percent of their funding from the United Way.

"The United Way is the lifeblood of our existence as a non-profit organization," says executive director Mary Lee Johnston. UW funding allows her preschools to access other government and voluntary funds to provide a variety of services, including helping children with special needs and offering parenting skills to adults.

Rhonda Pickett, a senior in the college, is receiving practicum experience at the Ripley center. "It's a good socialization for the children," she says. "And I've really enjoyed working here."

Johnetta Morrison, MU assistant professor of human development and family studies, says students such as Pickett "get beyond theory." They obtain a diverse experience because the centers' children are often from different cultures, races and socio-economic backgrounds. MU nursing and physical therapy students also receive practical experience at the centers.

In addition, Johnston notes that at least one-fourth of the people using the day care service are University employees. They include people ranging from professors to clerical workers, from University Hospital staff to custodians.

This year, Johnston says, UW's allocations panel recommended more money for the Community Nursery Schools. "This would help us in retention and in maintaining a high level of service," she adds. "If the campaign is a success, we can accomplish this."

For social service programs such as her preschools, Johnston says the annual United Way campaigns are of "ongoing importance." She adds: "It's one way people can pull together and contribute to something that doesn't have legal and political red tape."

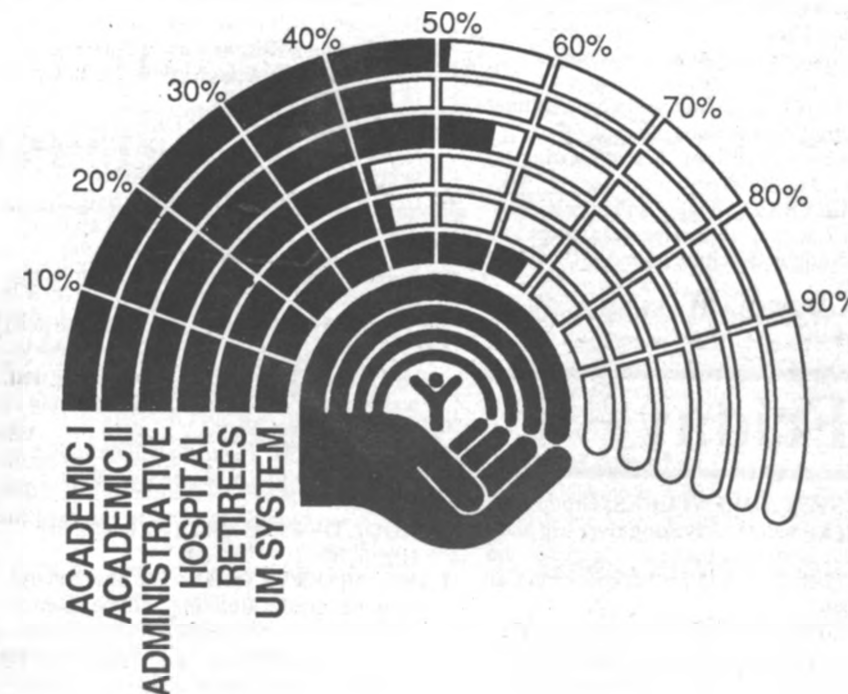
## Campaign at 51 percent

MU's United Way campaign is looking good.

At a meeting Oct. 16, volunteers reported receiving a total of \$109,626 in donations and pledges to date, or 51 percent of the goal. At this time last year, 44 percent of the goal had been attained.

"We're very encouraged by this outpouring of support," says Bob Bailey, assistant dean of law and campaign co-chairman. "But we also realize that we have quite a ways to go. If you have not contributed yet, we hope you will."

The University's goal is \$218,291, which is a part of the Columbia Area United Way's total goal of \$1.2 million. The money goes to help 26 social service agencies in Columbia.



## Printing Services

Open  
Monday  
thru  
Friday  
7:30 am  
to  
4:00 pm



University of Missouri-Columbia

Staffed by University employees with many years of expertise, our printing professionals want to provide you with the best possible service and products.

- Typesetting facilities (plus we can read most disks and capture your keystrokes)
- Complete paste-up and graphic design service
- Eleven Xerox 9500 copiers for fast Quick Copy turnaround of your work
- Single through 4-color process printing on quality offset presses
- Full bindery capabilities (including perfect binding)
- Proof and blueprint pick-up and delivery service
- And experienced Customer Service Representatives to make this all work for YOU!

**Now serving you from our new location!**

We are off Lemone Industrial Blvd. (up the street from Records Management and University Press). Our phone numbers have not changed and we are on Campus Mail delivery. Let us help you with your next project.

**PRINTING SERVICES**  
2800 Maguire Blvd.  
882-7801

## CAMPUS COMPUTING SHORT COURSES

### Intermediate WordPerfect

November 14, 1:30-4:30 pm  
226 Heinkel Building

A lecture covering:

- Backup features
- Outline features
- Setup menus
- Text in and out
- Mark text
- Footnotes
- Fonts
- Shell
- Thesaurus
- Screen

Prerequisites: A basic understanding and working knowledge of WordPerfect features.

### Advanced WordPerfect—Mail/Merge

November 21, 1:30-4:30 pm  
226 Heinkel Building

A lecture/demonstration of the Mail/Merge feature in WordPerfect.

Prerequisites: Participation in previous WordPerfect classes or extensive knowledge of WordPerfect.

**Call 882-2000 to enroll.**

REACH 11,000 MIZZOU FACULTY, STAFF AND RETIREES WITH AN AD  
IN MIZZOU WEEKLY!



# CALENDAR

Send calendar items in Campus Mail to Michelle Holden, 1100 University Place, by noon Wednesday the week before publication. Events are free and open to the public unless otherwise noted.

## HIGHLIGHTS

**SCHOOL OF FINE ARTS SERIES:** The Department of Theater will present Stephen Sondheim's *Merrily We Roll Along* at 8 p.m. Oct. 24 through 26 and at 2 p.m. Oct. 27 in Rhynsburger Theater. Cost: \$7 public, \$6 faculty, staff and retirees, \$4 students.

**UNIVERSITY HOSPITAL AND CLINICS:** The Nutrition and Food Services Department will sponsor an "all-you-can-eat" chili supper to benefit the Children's Miracle Network from 3-7 p.m. Oct. 26 in the hospital's Main Street Cafe. Cost: \$4 adults; \$2.75 children under 12. Tickets are available at Main Street Cafe and Snack Corner.

**HEARNES CENTER:** Sesame Street Live, "Silly Dancing," will be presented at 7:30 p.m. Oct. 29 and at 4 and 7:30 p.m. Oct. 30 at the Hearn Center. Cost: \$9.50 and \$8.

## 23 Wednesday

**COMPUTER COURSE:** Campus Computing will offer "Introduction to Lotus 1-2-3 (Part 2)." Call 882-2000 to register.

**MIDDAY GALLERY EVENT:** *The Recognition of Russia: A Climate of Mutual Distrust*, a video, will be shown at 12:15 p.m. at the Museum of Art and Archaeology.

**EMPLOYEE DEVELOPMENT SEMINAR:** Nan Erickson, assistant professor of practical arts and vocational technical education, will present "Time Management" from 1-3 p.m. in 146 Heinkel Bldg. Call 882-4859.

**PHARMACOLOGY AND PHYSIOLOGY SEMINAR:** William A. Pettinger, of Creighton University, will present "Altered Renal Alpha-2 Adrenergic Receptor Regulation in Genetic Hypertension" at 2:40 p.m. in M437 Medical Sciences Bldg.

**MOCKTOBERFEST (ALCOHOL AWARENESS MONTH):** "Strassenfest," a non-alcoholic happy hour with free food and local entertainment, will be from 3-5 p.m. on Lowry Mall. Call 882-4634.

**PLANT PATHOLOGY SEMINAR:** R. S. Hussey, of the University of Georgia, will present "Nematode Secretions and their Roles in Plant Infection" at 3:30 p.m. in 200 Waters Hall.

**CULTURAL HERITAGE SEMINAR:**

Howard Marshall, director of the Cultural Heritage Center and professor of art history, will present "The Vicissitudes of Kinship: Vernacular Architecture in the Lowlands of Scotland (and Missouri)" at 3:40 p.m. in 22 Tate Hall. A reception will follow in the Conley House parlors.

**CRAFT STUDIO/DARKROOM WORKSHOPS:** Photography Art Work will be offered from 6-9 p.m. in 203 Brady Commons. Also, Intermediate Four Harness Weaving, Jewelry Casting and Intermediate Photography will be offered from 6:30-9 p.m. in 203 Brady Commons. Craft workshop fees: \$34 non-students, \$28 students. Darkroom workshop fees: \$41 non-students, \$33 students. Call 882-2889.

**WOMEN'S CENTER:** Krista Ratcliffe, assistant professor of English, will present "Womyn and Words" at 7 p.m. in 229 Brady Commons.

**ECOLOGY AND EVOLUTION SEMINAR:** Patricia Rabenold, of Ohio State University, will present "Genetic Structure of Populations and the Evolution of Sociality in Birds: An Empirical Approach Using VNTR Loci" at 7:30 p.m. in 106 Lefevre Hall.

**MSA/GPC FILM:** *River's Edge* will be shown at 8 p.m. in Ellis Aud. Cost: \$1.50 public, free for MU students with ID.

## 24 Thursday

**ENGINEERING EXTENSION:** "Storm Water Regulations Workshop" will be held from 7 a.m.-4:30 p.m. at the Adam's Mark Hotel, 9103 E. 39th St., Kansas City. Cost: \$150. Call 882-3221.

**HORTICULTURE CLUB:** Group will sponsor a fall pumpkin and plant sale from 8 a.m.-5 p.m. in Greenhouse 16, next to the Physics Building.

**EMPLOYEE DEVELOPMENT SEMINAR:** Bonnie Arnold, coordinator of Retired/Separated Employee Programs, will present "Retirement Planning" from 9 a.m.-4 p.m. in 146 Heinkel Bldg. Call 882-4859.

**UNIVERSITY HOSPITAL AND CLINICS:** Flu shots will be offered to people over the age of 13 from 10 a.m.-1 p.m. and 4-7 p.m. at the Health Information Center in Columbia Mall. Cost: \$5.

**WOMEN'S CENTER:** Ruth Graves, of the Women's Center, will present "Cooking For One" at noon in 229 Brady Commons.

**STAFF ADVISORY COUNCIL:** Group will meet at 1:15 p.m. in S204 Memorial Union.

## MIZZOU MEATS

36 Agriculture Building (Corner of Hitt and Rollins) 882-2385 Ask for Kevin or Leo.  
SALE TIMES: Thursday: 4-6 p.m. Friday: 1-5 p.m.

### THIS WEEK'S SPECIALS

Boneless Ham .....	\$2.49 LB.
Center-Cut Pork Chops .....	\$2.69 LB.
Ground Beef, EXTRA LEAN ....	\$1.89 LB.
Smoked Bacon, SLICED .....	99¢ LB.

Limit 5 lbs. with \$20 purchase.

## EXHIBITS

**BINGHAM GALLERY:** An exhibit of contemporary Korean paintings by Jeong Kee Im is on display through Nov. 4. Also, photography by David Allison, a graduating master's of fine arts candidate, will be on display Oct. 28-Nov. 4. Hours: 10 a.m.-4 p.m. Monday through Friday and 2-4 p.m. Sunday. Gallery is in the Fine Arts Building.

**JESSE AUD LOBBY:** "Teams, Trucks, Tri-Motors, and Trains: the Transportation Paintings of Ollie C. Ziegler," showcasing the contributions Missouri has made to the history of transportation, is being presented through December.

**JESSE HALL DISPLAY CASE:** "The Maine Acadian Culture Survey, St. John River Valley Folklife Survey Project" is on display through Oct. 30.

**MEMORIAL UNION DISPLAY CASE:** "Welcome Home," an exhibit on MU Homecoming compiled by University Archives, is on display through December.

**MUSEUM OF ART AND ARCHAEOLOGY:** "The Empire that was Russia: A Photographic Record by Sergei Prokudin-Gorsky" is on display through Nov. 3. The museum, in Pickard Hall, is open from 9 a.m.-9 p.m. Tuesday, 9 a.m.-5 p.m. Wednesday through Friday and noon-5 p.m. Saturday and Sunday.

**STATE HISTORICAL SOCIETY:** The gallery, in the east end of Ellis Library, is featuring "Remember the War...50 Years Ago," with oils and lithographs by Thomas Hart Benton and wartime editorial cartoons by Daniel Fitzpatrick; and "The Colored Engravings of Karl Bodmer," both through mid-December. The corridors are featuring "Salon Photographs by Andy Tau" and "Decades: 1882 to 1972, Editorial Cartoons," through mid-December. The gallery is open from 8:30 a.m.-4 p.m. Monday through Friday. The corridors are open from 8 a.m.-4:30 p.m. Monday through Friday and 9 a.m.-4:30 p.m. Saturday.

**WOMEN'S CENTER:** An exhibit of past and present T-shirts, buttons and bumper stickers dealing with women's political and social issues is on display through Oct. 31 in 229 Brady Commons.

**LEADERSHIP SERIES:** R. Dean Baxter, assistant manager of Human Resource Development, will present "It's Your Time" from 3-5 p.m. in 235 Brady Commons.

**CRAFT STUDIO/DARKROOM WORKSHOPS:** Beginning Pot Throwing (Session II) will be offered from 3:30-6 p.m. in 203 Brady Commons. Also, Intermediate Pot Throwing and Copper Foil Stained Glass will all be offered from 6:30-9 p.m. in 203 Brady Commons. Craft workshop fees: \$34 non-students, \$28 students. Call 882-2889.

**PHARMACOLOGY AND PHYSIOLOGY SEMINAR:** Robert Gore, of the University of Arizona, will present "Physical Determinants of Microvascular Reactivity" at 3:30 p.m. in MA217 Health Sciences Center.

**FACULTY COUNCIL:** Group will meet at 3:40 p.m. in S110 Memorial Union.

**NUTRITION RESEARCH SEMINAR SERIES:** Dennis T. Gordon, professor of food science and nutrition, will present "Interactions Among Iron, Copper and Zinc" at 3:40 p.m. in 103 Animal Sciences Center.

**STATUS OF WOMEN COMMITTEE:** A panel will address the topic "Sexual Harassment: What Can We Learn From the Thomas-Hill Dispute?" at 7 p.m. in 5 Hulston Hall, Law School.

**MOCKTOBERFEST (ALCOHOL AWARENESS MONTH):** A mock trial of an alcohol-related date rape case will be at 7 p.m. in the courtroom at Hulston Hall, Law School. Call 882-4634.

**SICKLE CELL SUPPORT GROUP:** Sarah Wiard, a social worker, will present "Using Resources Creatively" at 7 p.m. at the Health Information Center in Columbia Mall.

**MUSIC EVENT:** Paul Kirk will give a lecture/demonstration of antique musical instruments dating from 1620 at 7 p.m. in 145 Fine Arts Bldg.

**MU VOLLEYBALL:** Tigers will play Kansas State at 7:30 p.m. at the Hearn Center. Cost: \$3 adults, \$2 children and MU students.

**SCHOOL OF FINE ARTS SERIES:** See Highlights.

## 25 Friday

**WILDERNESS ADVENTURES:** Group will sponsor a three-day kayaking river trip and a three-day beginning backpacking trip on the Ozark Trail. Cost: \$45 for backpacking. Call 882-3066.

**RECREATION/INTRAMURALS:** A three-player volleyball tournament will be held through Oct. 27 at the Student Recreation Center. Cost \$5. Call 882-2066.

**MOCKTOBERFEST (ALCOHOL**

**AWARENESS MONTH):** George Obermeyer will speak on self-esteem for faculty and staff from 9 a.m.-4 p.m. at the Campus Inn, Stadium Boulevard at College Avenue. Call 882-4634.

**EMPLOYEE DEVELOPMENT SEMINAR:** R. Dean Baxter, assistant manager of Human Resource Development, will present "Communication" from 9 a.m.-4 p.m. in 146 Heinkel Bldg. Call 882-4859.

**CONTINUING PROFESSIONAL EDUCATION PROGRAM:** Parris Watts, associate professor of health and physical education, will present "Warning: Schools Can Be Hazardous to Your Health" from 9 a.m.-4 p.m. in 234 Brady Commons. Cost: \$70. Also, Lonnie Echemiacht, associate professor of practical arts and vocational technical education, will present "Desktop Publishing: Advanced Techniques for Creating Text and Graphics Documents" in 305 Hill Hall. Cost: \$70. Call 882-7403.

**CAMPUS WRITING PROGRAM:** An informal interdisciplinary discussion on using writing to improve student learning will be from 11:40-1 p.m. in S207 Memorial Union. Bring a brown bag lunch.

**ENTOMOLOGY SEMINAR:** Gene Garrett, professor of natural resources, will present "Agroforestry: A Land Use Alternative" at 2:40 p.m. in 2-7 Agriculture Bldg.

**ANTHROPOLOGY LECTURE SERIES:** James W. Hamilton, associate professor of anthropology, will present "A Paradigm For All Seasons? or How Do We Talk (to Each Other)?" from 3:30-5 p.m. in 309 Arts and Science Bldg. A happy hour will follow at his home. Call 882-6806.

**CHEMISTRY:** Peter Weber, of Brown University, will present "Photoionization Via Transient Resonances: A New Probe for Vibronic Coupling Effects" at 3:40 p.m. in 103 Schlundt Hall.

**WILDERNESS ADVENTURES:** Group will sponsor a Devil's Ice Box caving trip beginning at 4 p.m. Call 882-3066.

**STUDENT ENSEMBLE SERIES:** The Studio Jazz Ensemble and Jazz Lab Band, conducted by Dale J. Lonis and Scott Rumery, will perform from 5-8 p.m. at the Cafe Court in Columbia Mall.

**ART AND ARCHAEOLOGY LECTURE:** William Brumfield, of Tulane University, will present "Organizing 'The Empire that was Russia'" at 6 p.m. at the Museum of Art and Archaeology.

**MSA/GPC FILM:** *Fantasia* will be shown at 7 p.m. and 9:30 p.m. Jesse Aud. Cost: \$2.50.

**SCHOOL OF FINE ARTS SERIES:** See Highlights.

**LAWS OBSERVATORY:** The observatory, atop the Physics Building, will be open from 8-10 p.m. for public viewing of the skies, weather permitting. Sponsored by the Arts and Science Student Government and Central Missouri Amateur Astronomers. Call 882-5502.

## 26 Saturday

**WOMEN'S CENTER:** Laurel Fuller, vice president, and Terryll Nemeth, director, of the School of Metaphysics, will present "Claiming Your Personal Power in Relationships" from 9 a.m.-noon in 229 Brady Commons.

**UNIVERSITY HOSPITAL AND CLINICS:** See Highlights.

**MSA/GPC FILM:** *Fantasia* will be shown at 7 p.m. and 9:30 p.m. Ellis Aud. Cost: \$2.50.

**SCHOOL OF FINE ARTS SERIES:** See Highlights.

## 27 Sunday

**SCHOOL OF FINE ARTS SERIES:** See Highlights.

**CONCERT SERIES:** "Mozart and His Rival Righini: An Afternoon of *Bel Canto*" will be presented at 3 p.m. in Jesse Aud. Soprano Costanza Cuccaro, mezzo-soprano Linn Maxwell, tenor James McDonald, baritone William Parker and pianist Ed Penhorwood will be featured. Cost: \$15 public and faculty/staff, \$12 students. A concert preview by Michael Budds, musicologist, will be at 2 p.m. in the Whitmore Recital Hall.

**RECREATION/INTRAMURALS:** Creative/International Dance taught by Sandradee, a native of Jamaica, will be offered from 5:50-6:50 p.m. Sundays through Dec. 8 in B301 Student Rec Center. Call 882-2066.

**MSA/GPC FILM:** *Dracula* will be shown at 8 p.m. in Ellis Aud. Cost: \$1.

## 28 Monday

**COMPUTER COURSE:** Campus Computing will offer "Introduction to WriteNow." Call 882-2000 to register.

**UNIVERSITY HOSPITAL AND CLINICS:** Diane Mosher, registered dietician, will present "Vitamins and Minerals: Nature's Delicate Balance" at 11 a.m. at the Health Information Center in Columbia Mall.

**WOMEN'S CENTER:** Debbie Wehmeyer, Cheers project coordinator, will present "Women and Alcohol: A Sociocultural Perspective" at noon in 229 in Brady Commons.

**JOURNALISM BROWN BAG SEMINAR:** Nancy Beth Jackson, assistant professor of journalism, will present "Lifestyles: Why Women Represent Great Potential For Newspapers, And How To Attract Them" from 12:40-1:30 p.m. in Tucker Forum, Gannett Hall.

**STUDENT ENSEMBLE SERIES:** The Brass Choir, conducted by Betty Scott, professor of music, will perform at 8 p.m. in the Whitmore Recital Hall.

**MSA/GPC FILM:** *Vampyr* will be shown at 8 p.m. in Ellis Aud. Cost: \$1.50.

## 29 Tuesday

**COMPUTER COURSE:** Campus Computing will offer "Advanced WordPerfect—Tables." Call 882-2000 to register.

**EMPLOYEE DEVELOPMENT SEMINAR:** Betty Hosokawa, director of the Employee Assistance Program, and Wiley Miller, counseling psychologist, will present "Managing the Troubled Employee" from 9 a.m.-4 p.m. in 146 Heinkel Bldg. Call 882-4859.

**EXECUTIVE SEMINAR:** Hal Wood, manager of Advisory Management Services, Kansas City, will present "Leadership Skills," and Jo Behymer, MU associate professor of business education and associate dean of education, will present "The Secretary as Manager," both from 9 a.m.-4 p.m. at the Guesthouse Inn, 801 Keene St. Doug Sonheim, a doctoral candidate at MU, will present "Straight to

the Point," a seminar on effective business writing, from 9 a.m.-4 p.m. at the Best Western Inn, I-70 and Highway 63. Cost: \$149 each. Call 882-4803.

**MIDDAY GALLERY EVENT:** Zoe Smith, associate professor of journalism, will present "Photojournalism's Early Days" at 12:15 p.m. at the Museum of Art and Archaeology.

**PHARMACOLOGY RESEARCH SEMINAR:** James W. Fisher, of Tulane University, will present "The Role of Adenosine In Hypoxic Stimulation of Erythropoietin Production" at 3:40 p.m. in M558 Health Sciences Center.

**RECREATION/INTRAMURALS:** A water exercise class will be offered from 5:15-6 p.m. Tuesdays and Thursdays through Dec. 10 at McKee Pool. Cost: \$12. Call 882-2066.

**ENHANCING YOUR CAREER WORKSHOP:** The Career Planning and Placement Center will present "Who Are You? Finding Careers That Fit Your Work Values" at 7 p.m. in 110 Noyes Hall.

**HEARNES CENTER:** See Highlights.

**MOZART AT MISSOURI:** A concert featuring Paul Garritson, clarinet; Kate Hamilton, viola; Raymond Herbert, piano; Laurence Lowe, horn; John McLeod, violin; Edwin Penhorwood, piano; Carleton Spotts, cello; Janice Wenger, piano; Dan Willett, oboe; and Barbara Wood, bassoon, will be at 8 p.m. in the Whitmore Recital Hall.

## 30 Wednesday

**PSYCHOANALYSIS SEMINAR:** The Department of English and the *Newsletter of the Freudian Field* will sponsor "Psychoanalytic Theory and Clinical Practice in History and Hysteria" through Nov. 2. Cost: \$80 non-students, \$40 students. Call 882-6066.

**MISSOURI EXECUTIVE PROGRAMS AND MANAGEMENT SEMINAR:** Hal Wood, manager of Advisory Management Services, Kansas City, will present "Managing in Government" from 9 a.m.-4 p.m. at the Guesthouse Inn, 801 Keene St. Deborah Snellen, founder of Business Class, will present "Fostering Leadership: A Woman's Perspective" from 9 a.m.-4 p.m. at the Best Western Inn, I-70 and Highway 63. Cost: \$149 each. Call 882-4803.

**EMPLOYEE DEVELOPMENT SEMINAR:** Brent Mattox, industrial hygienist, and Ray Morrison, safety representative, both with Environmental Health and Safety, will present "Safety and Ergonomics in the Office" from 10 a.m.-3 p.m. in 146 Heinkel Bldg. Call 882-4859.

**PHYSIOLOGY SEMINAR:** Albert Nasjletti, of the New York Medical College, will present "The Role of Prostaglandins in the Mechanisms of Angiotensin-Dependent Hypertension" at 2:40 p.m. in M437 School of Medicine.

**PLANT PATHOLOGY SEMINAR:** Mike Dunn, of the Department of Plant Pathology, will present "Characterization of the Extracellular Polysaccharide Depolymerase Present in Free-living and Symbiotic *Bradyrhizobium japonicum*" at 3:30 in 200 Waters Hall.

**HEARNES CENTER:** See Highlights.

**WOMEN'S CENTER:** Michelle Gadbois, meditation facilitator, will present "Visualizing Self-Empowerment" at 7 p.m. in 229 Brady Commons.

**ECOLOGY AND EVOLUTION SEMINAR:** Steven Tonsor, of Michigan State University, will present "The Effects of Mating Structure on Heritability *Plantago lanceolata*" at 7:30 p.m. in 106 Lefevre Hall.

**MU VOLLEYBALL:** Tigers will play Oklahoma at 7:30 p.m. at the Hearnese Center. Cost: \$3 adults, \$2 children and MU students.

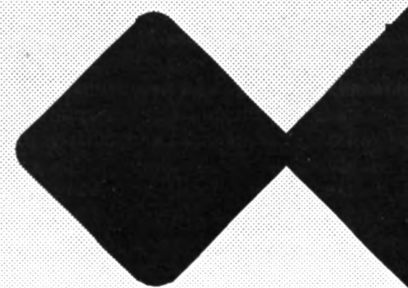
**CONCERT SERIES:** The Stuttgart Wind Quintet will perform at 8 p.m. in Jesse Aud. Cost: \$13 public and faculty/staff/retirees, \$10 students.

**MSA/GPC FILM:** *The Shining* will be shown at 8 p.m. in Ellis Aud. Cost: \$1.50 public, free for MU students with ID.

## PARKING AND TRANSPORTATION SERVICES

### 107 SWALLOW

### 882-4568



### Parking Committee Chairs 1991-1992

#### CAMPUS PARKING AND TRANSPORTATION

Bettyann Dubansky, Associate Professor of Social Work  
707 Clark Hall

#### CAMPUS PLANNING

Osmund Overby, Professor of Art History and Archaeology  
109 Pickard Hall

#### TRAFFIC APPEALS

Harley Wright, Assistant Professor of Family and Community Medicine  
Ma306c Medical Science  
and  
Kathy Smith, Administrative Assistant Law Library  
226 School of Law

It's autumn now,  
but the  
holidays will  
be here soon.



Call Campus Catering for:

- Holiday Office Parties
  - Family Get-Togethers
  - Festive Receptions
  - Dinners and Banquets
  - Private Parties Anywhere
- in the Columbia Area

Call: 88-CATER (882-2837)



Campus  
Catering

## LABORATORY FOR FERTILITY AND CRYOBIOLOGY

Semen Donors  
Wanted

The laboratory is seeking semen donors for its sperm bank program. The program is confidential and all donors will be compensated.

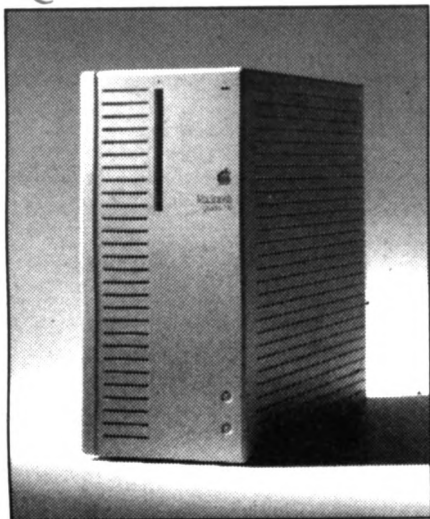
As a potential donor, you will undergo non-invasive screening procedures to insure good health and fertility potential. You must be between the ages of 20 and 40. If you are interested, call 882-7199.

MINORITIES ARE NEEDED



# Introducing Power, Portability and Affordability from Apple

## Quadra 700



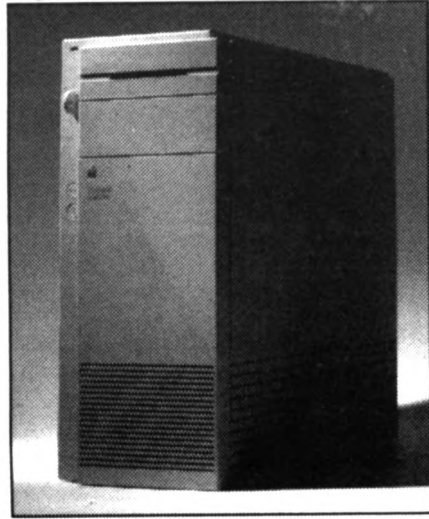
4MB RAM, Hard Disk 80 CPU with extended keyboard **\$4,530**

Maximum power...expansion... flexibility—the Apple™ Macintosh™ Quadra™ personal computers delivers all three in the most powerful pair of Macintosh ever.

With their ultrafast Motorola 68040 microprocessors, faster graphics architectures, and improved SCSI and NuBus™ capabilities, the Quadra 700 and 900 run applications up to twice as fast as the Macintosh IIx. You'll appreciate the speed of the Quadra 700 or 900 whenever you open a window, search, and sort—and even more when the computer redraws complex graphics, recalculates intricate spreadsheets, or reformats large documents.

Unlike other personal computers, the Quadra 700 and 900 also come with many built-in capabilities that give you fast, direct access to the resources you need. With built-in networking, for instance, you can plug your system directly to high-speed Ethernet and LocalTalk™ networks without having to buy additional cards. Built-in support for

## Quadra 900



4MB RAM, Hard Disk 160 CPU with extended keyboard **\$5,968**

all Apple displays makes it easy to connect your display without adding video cards. And thanks to built-in support for up to 24 bits of color, you can work with photographic-quality images. Up to ten built-in ports give you instant access to printers, scanners, high-capacity disk drives, and more.

The Quadra 700 supports up to 20 megabytes of RAM, so you can work with larger files and many open applications. And two NuBus expansion slots make it easy to add specialized coprocessor, media integration, and data acquisition cards.

In the Quadra 900, you'll also find the ultimate in flexibility. The Quadra 900 supports up to 64 megabytes of RAM. Five expansion slots let you customize your system with specialized NuBus cards. And the Quadra 900 also supports up to four storage devices. There's another plus: The Quadra 900 is the first Macintosh personal computer to provide a physical key lock for added security.

Based on our fastest-selling Macintosh™ model ever, the Apple™ Macintosh Classic™ II personal computer extends the capabilities of the Macintosh Classic—so you get all of the advantages associated with Macintosh computers in a higher performance, affordable package.

You'll find that your applications run more than twice as fast on the Classic II as they do on the original Classic—yet it still takes just minutes to set up and use the Classic II.

Not only can you run any of the thousands of Macintosh applications that are available for virtually any task, you also can work with several applications at the same time.

The Classic II also makes it easy to learn as you work. To find out about a Macintosh feature, simply point to something on the screen; a description of the object pops up in a "balloon." And thanks to the TrueType™ fonts that come standard with all Macintosh, you can expect high-quality printed results for all of your documents—regardless of the printer you're using.

## Classic II

2MB RAM, Hard Disk 40 **\$1,403**



**COMPUTER SPECTRUM**

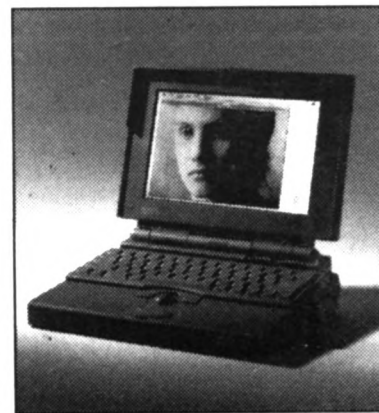
T.A. Brady Commons, University of Missouri, (314) 882-2131

## PowerBook 170

4MB RAM Hard Disk 40 **\$3,399** (includes internal fax/data modem)

Macintosh PowerBook 170, the most powerful PowerBook, offers high performance, premier display technology, and outstanding flexibility in a completely integrated computer you can set up and use anywhere. In a sleek package that fits inside a briefcase, the PowerBook 170 includes everything you need to get your work done—CPU, full-size screen and keyboard, trackball, battery, and disk storage.

In addition to all the advantages of a Macintosh, the PowerBook 170 gives you a comfortable way to work because of its integrated trackball and palm rest, adjustable standard-size keyboard, and high-performance, full page-width screen. What's more, the PowerBook 170 runs applications up to 50 percent faster than the PowerBook 140, and it comes standard with 4 megabytes of RAM and built-in modem.



## PowerBook 140

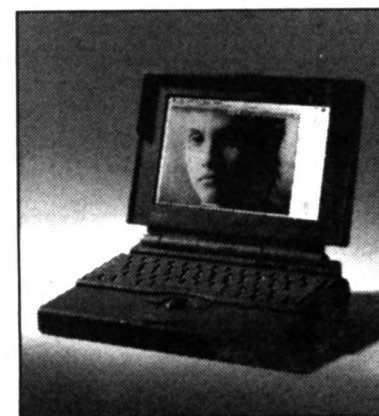
2MB RAM, Hard Disk 40 **\$2,364**

The Apple™ Macintosh™ PowerBook™ line of notebook computers represents an outstanding partnership of convenience, power, and affordability.

The Macintosh PowerBook 140 is designed for those who want solid Macintosh performance and flexibility in a convenient, take-it-wherever-you-work notebook computer.

What's more, the Macintosh PowerBook 140 gives you a remarkably comfortable way to work thanks to the most innovative ergonomic design in the industry. An integrated trackball and palm rest makes it easy for you to work with the computer on your lap, and you can easily adjust the standard-size keyboard and bright, full page-width display.

The PowerBook 140 & 170 both offer greater performance than the PowerBook 100 and also have built-in sound input capability so you can add sounds from other sources.

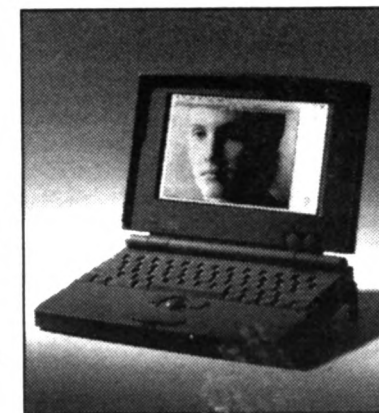


## PowerBook 100

2MB RAM, Hard Disk 20 **\$1,847** (with SuperDrive)

The Macintosh PowerBook 100, the most affordable PowerBook, packs both the power and the ease of Macintosh computing into a sleek, innovative design that makes it easy to take your work wherever you go. And it gives you all the traditional advantages of a Macintosh—including unsurpassed ease of use and the ability to run thousands of applications.

Built-in networking capabilities give you instant access to all the resources available in an AppleTalk™ network—including electronic mail, printers, and file servers. Five built-in ports give you plug-and-play connections to high-capacity hard disks, CD-ROM drives, printers, and input devices. With the external floppy disk drive, you can work with data files stored in Macintosh, MS-DOS, OS 2, and ProDOS™ formats.



**The Apple Computer Loan** is now available. Stop by the Computer Spectrum for more information on how Apple has made Macintosh even more affordable.

**See the new Macintosh** computers in Brady Commons, Friday November 1 from 9 a.m. to 4 p.m.



Macintosh  
The power to be your best.

**MIZZOU**  
WEEKLY

Publications and Alumni Communication  
1100 University Place  
Columbia, MO 65211

©1991 Apple Computer, Inc. Apple, the Apple logo and Macintosh are registered trademarks of Apple Computer, Inc. The power to be your best is a trademark of Apple Computer, Inc. MS-DOS is a registered trademark of Microsoft Corporation.

University Libraries  
University of Missouri

## Digitization Information Page

Local identifier                      MizzouWeekly(print)

### Source information

Format	Newspaper
Content type	Text with images
Source ID	Duplicate copies University Archives weeded out
Notes	

### Capture information

Date captured	July-December, 2022
Scanner manufacturer	Plustek OpticBook
Scanner model	A300 Plus
Scanning system software	Book Pavilion
Optical resolution	600 dpi
Color settings	8 bit grayscale for majority of pages; 24 bit color for color illustrations/portraits/photographs
File types	tiff
Notes	

### Derivatives - Access copy

Compression	Tiff: LZW compression
Editing software	Adobe Photoshop 2022
Resolution	600 dpi
Color	same as captured
File types	pdf created from tiffs
Notes	Images cropped, straightened, and brightened.