

# MIZZOU

## W E E K L Y

University of Missouri-Columbia / April 6, 1995



**ON THE INSIDE**  
Staff Recognition Week gets under way Monday. Staff Recognition Award winners and Service Award Recipients are identified.

## Faculty Council conditionally OKs new admission standard

The Faculty Council last week approved a revised admission standard for first-time freshmen. The new standard, to take effect in fall 1996, will admit students for whom a freshman-year GPA of 2.0 or better is predicted.

The expected GPA will be based on a formula that incorporates entrance test scores and grades in high school core courses. It differs from existing admissions criteria in that class rank will not be a variable.

The council passed the measure with the proviso that the standard's principal architects — Admissions Director Gary Smith, Vice Chancellor for Student Affairs Charles Schroeder and Gary Pike, director of Student Life Studies — attend the council's April 13 meeting to provide more complete information about the formula to be used and details of how and when the public will be notified. This stipulation was proposed by Jean Hamilton, associate professor of apparel and textile management. Although agreeing with the need for a revised standard, she and other council members were concerned about approving the revision without knowing more about it.

Ron Plain, professor of agricultural economics, was one of four council members voting against approval, saying faculty were in effect handing administrators a "blank check" in a traditionally academic matter. Although the Board of Curators sets academic admissions policy, curators have delegated to faculty the authority to set minimum academic standards on each campus.

Though sensitive to these concerns, Chairman Ed Hunvald urged quick action because of the unprecedented growth MU is experiencing in applications for admission. "We have to put considerable trust in Admissions to handle this ... I'm asking you to approve this in principle and then we'll have them report back to us. There is some urgency."

Deborah Pearsall, associate professor of anthropology, noted the revised standard represents "a big change for this state. The bottom line is these students won't know when they apply whether they're going to get in or not."

But council member Bob Almony, assistant director of MU libraries, noted that's the way it is at most of the nation's better schools. "Most prestigious private and public research universities do this. I didn't know if I was going to get in when I applied to UC-Berkeley."

Smith has said the new standard will draw students who can succeed at MU and provide more flexibility in enrollment management. The revised standards also meet the admissions guidelines established by the state Coordinating Board for Higher Education.

In another matter related to first-time students, Associate Dean of Arts and Science Ted Tarkow asked the council to consider mid-term grade reports for freshmen. He said the issue is a public relations matter important to the University's relationship with parents. He distributed a letter from the mother of an unsuccessful student, suggesting the University mail mid-term grade reports to parents. "I am surprised

and somewhat alarmed that the University of Missouri notifies students and parents only of final grades. At this point, it is often too late," the letter said.

Tarkow said freshmen have complained that some professors give only one or two exams a semester and by the time the student learns he or she is failing, it's too late to drop the course. "The frequency and timing of exams has been a real issue in some of our freshman classes," he said.

Various options were discussed, including distributing a mid-term report form to students at summer welcome and asking them to carry it from professor to professor at mid-term. Eventually, though, most council members sided with Associate Professor of Communication Mike Porter who said, "I really don't want 200 students trying to find me" at mid-term. "If the administration wants to send me a form, I'll sign it."

Finally the council adopted chemistry and physics Professor Pat Plummer's proposal that the council urge all faculty to notify students, particularly freshmen, of their grades prior to a drop date.

In other business, the council:

■ discussed perceived problems with the University's managed care plan. The topic was introduced by mathematics Professor Dennis Sentilles, member of a faculty and staff committee charged with plan oversight. Though noting staff generally are pleased with the plan because it has increased their access to health care, Sentilles said some faculty and physicians view GencareSanus as "intrusive" in its involvement in doctor-patient relationships. Council member L.L. Penney, infertility specialist and associate professor of obstetrics and gynecology, said managed care is complicating his treatment of patients. Sentilles will introduce a resolution for council consideration at its April 13 meeting. Any resolution the council might pass would be forwarded to the the health oversight committee.

## No through traffic

*The parking office and a law student come to the aid of a bird couple who are soon to be parents.*

When a pair of nesting birds set up housekeeping recently on a campus parking lot, they probably had no idea they would touch a soft spot in the heart of the University community.

This mom-and-pop pair are killdeer, a bird native to Missouri that nests in

open fields, on beaches — or in this case, in gravel parking lots.

That's where first-year law student Valerie Batchelder made their acquaintance. One Friday evening a few weeks back, she heard a ruckus as she walked across a commuter parking lot south of the Trowbridge Center. "The mother bird had her wing flared like it was hurt and was trying to lead me away from her nest," Batchelder said.

When she investigated, she found a clutch of four eggs in a nest scooped out of the surrounding gravel. She could see the momma bird's mate hovering a short distance away. So Batchelder, who lives in a nearby apartment, kept an eye on the pair over the weekend.

As the work week approached she saw more and more cars parking close to the nearly invisible nest. Batchelder couldn't mimic the killdeer's broken-wing routine, but she did the next best thing. She pulled her car half-way into

the closest parking spot and blocked the exposed nest.

On Monday she checked with the MU parking office to see if she could buy a temporary permit and leave her car there until the eggs hatched in a few weeks. "I didn't want the nest to get squashed," she said. "And I didn't want to worry about getting a ticket during the day."

As it turned out, that wasn't necessary. Parking Director Jim Joy gave Batchelder some boards she could use to barricade the nest temporarily. Later, three concrete parking bumpers were rearranged to shield the mother and her eggs.

At last report, the arrangement was working fine. Mom and dad take turns roosting on the eggs, which should hatch in a week or so. The mother killdeer keeps a wary eye on human visitors who drop by to check on the birds' progress, but so far even a television news crew hasn't ruffled her maternal dignity.



**A killdeer tends her eggs in a parking lot near the Trowbridge Center. Valerie Batchelder, left, helped save them from almost certain death.**

Rob Hill photos



**GRADUATE STUDENTS TO BE HONORED APRIL 11**

Outstanding graduate students will be recognized at a ceremony sponsored by the Graduate School, the Graduate Student Association and the MU Parents Association. The event begins at 7 p.m., Tuesday, April 11, in Jesse Auditorium. Provost Ed Sheridan will speak and a reception will follow in the Jesse Hall Rotunda. The ceremony and reception are open to the public.

Three awards will be presented: the Superior Graduate Achievement Award, which honors one graduate student from each graduate program; the Donald K. Anderson Graduate Student Teaching Award; and the Teaching Assistant Award, sponsored by the parents association, to honor outstanding teachers who work with undergraduates.

For additional information, contact Karen Neylon, 882-7081.



**COME TO THE NATURAL RESOURCES BUILDING GROUNDBREAKING CEREMONY**

Gov. Mel Carnahan, U.S. Sen. Kit Bond, U.S. Rep. Harold Volkmer and a number of University officials will join Chancellor Charles Kiesler at the April 14 groundbreaking ceremony for the Anheuser-Busch Natural Resources Building. Faculty, staff and students are encouraged to attend.

The ceremony gets under way at 3:30 p.m. with a reception in Room 2-69 of the Agriculture Building. The actual ceremony begins at 4 p.m. in the Woodland and Floral Gardens east of the Agriculture Building at the corner of Hitt and Rollins streets.

Money for the building comes from private donations, including \$1.5 million from Anheuser-Busch, the U.S. Forest Service and proceeds of a bond issue passed by Missouri voters last August.



**ETHICS SPECIALIST TO SPEAK APRIL 20**

Stuart C. Gilman, special assistant to the director of the U.S. Office of Government Ethics, will be the Department of Public Administration's 1995 Monroe-Paine Lecturer in Public Affairs. The title of his lecture is "The Search for Professional Ethics: Truth, Lies and the American Way." It begins at 3:40 p.m. Thursday, April 20, in the Joplin/Boone Room of Memorial Union.

**MU plays major role in United Way's success**

The United Way raised a record-breaking \$1.5 million during its 1994-95 campaign — a 7.3 percent increase over last year's total — and MU is being credited with a large part of that success.

"The United Way is doing more now than ever," said board President Mike Sanford, who cited the two-day 'Day of Caring,' an effort led by MU students, and the United Way's Partnership in Education with Columbia Public Schools as significant rea-

sons for the campaign's success.

About 400 area employee groups and local volunteers were recognized at the Columbia Area United Way's annual meeting March 22 at the Holiday Inn Executive Center. Volunteers from numerous United Way committees, donors and representatives from local agencies joined in thanking the many citizens and local employers who support the organization.

Among Mizzou employees who were

singled out for recognition were:

■ Chris Koukola, assistant to the chancellor for University affairs, who will be the United Way's 1995-96 president..

■ Rose Porter, associate dean of the Sinclair School of Nursing, who received the Campaign Chair Award for her work and innovative ideas during the MU campaign.

■ Tom Gray, of KOMU-TV, received the Charlyn Y. Law Award for his part in the United Way simulcasts, production of a video

for the Columbia-area campaign and other volunteer projects.

Also at the March 22 annual meeting, Jim Offutt, Shelter Insurance Companies, received the Jack Matthews Award for his commitment to the United Way and the community.

The Columbia Area United Way is an independent, volunteer-run group of mid-Missouri citizens dedicated to supporting and improving local human services.

**College of Education programs rank in top five nationwide**

Two graduate programs in the College of Education have been ranked among the nation's best by *U.S. News & World Report*. The college's graduate programs in educational and counseling psychology as well as practical arts and vocational-technical education were each ranked fourth in the coun-

try and topped the Big Eight.

The new ranking, published in *U.S. News'* March 27 issue, marks the first time that education programs have been examined as part of the magazine's annual guide, *America's Best Graduate Schools*. In the report, education schools and individual pro-


grams were ranked according to their performance in five categories: faculty resources, research activity, student selectivity and two separate measures of reputation.

"We are pleased to have two of our departments given such recognition," said Richard Andrews, dean of the College of Education. "These two departments have sustained this kind of recognition over the past decade, and it is our goal that all the departments and programs in the College of Education will receive the same national distinction that these two departments have already achieved."

Within the department of practical arts and vocational-technical education, students work to understand the process of teaching and how people learn through various teaching devices. The MU department is the only one of its kind in the state.

Students in the educational and counseling psychology program focus on the many differences in the development and interpersonal needs of normally functioning individuals. Training within the program teaches a scientific approach to applied and theoretical issues affecting individuals and society.

Now, there is a




to serve you at Union Cafe.



**Get a fresh Subway sub or salad from 10 a.m. - 3 p.m.**

*(meal plans not accepted for Subway)*



**Lower Level,  
Memorial Union North**  
Open Mon. - Fri., 7 a.m. - 3 p.m.

FOR THE  
**RECORD**

**ADMINISTRATIVE, SERVICE AND SUPPORT STAFF** are invited to apply for 1995-96 positions on MU's standing committees. Only those who are 75 percent or more FTE will be considered. Deadline for requests is April 14.

Openings exist on these committees: parking and transportation; planning; recreation; safety; committees; concerts; Hearnes Center; lectures; library; Missouri unions; minority affairs; persons with disabilities; retiree advisory; status of women; traffic appeals; environmental affairs.

For more information, contact the MU Staff Advisory Council, 319 Jesse Hall, 882-4269.

**STAFF ARE INVITED** to the American Management Association's eighth annual Secretaries Briefing Videoconference from noon to 2 p.m., Wednesday, April 26, in Jesse Wrench Auditorium, Memorial Union. This year's focus is "Leading Through Influence." Participants will learn strategies for increasing their own personal effectiveness and the effectiveness of their team and organization. Seating is first-come, first-serve.

**THE ART HISTORY AND ARCHAEOLOGY GRADUATE STUDENT ASSOCIATION** will sponsor a book sale and art auction to benefit fellow graduate student Scott Meyers who lost many belongings in a fire last year. The sale will run from Tuesday, April 11, through Saturday, April 15, Room 109 Pickard. The art auction will begin at 12:30 p.m. on Saturday, April 15 in 106 Pickard. Anyone wanting to donate books or art to be auctioned should bring the items to 109 Pickard before April 11. For more information call Scot Isom, 443-4334, Victor Martinez, 449-0231, or Lisa Moore, 875-1797.

**MIZZOU WEEKLY**

Vol. 16 No. 26

A publication of the University of Missouri-Columbia faculty and staff, published every Thursday during the academic year and twice a month during the summer by Publications and Alumni Communication, a department of University Affairs, 407 Reynolds Alumni and Visitor Center, 882-7357. News deadline is noon Thursday the week before publication. Annual subscriptions are available for \$20.

Editor: Susan Salzer  
Assistant editor: John Beahler  
Director of Advertising: Tanya Sitt  
Graphic editor: Nancy Daniel

# Staff Recognition Week '95

Administrative, service and support staff make a big difference at Mizzou. This year, the University recognizes the more than 8,000 staff members who do so much to make MU a fine place to work and receive an education.

Staff Recognition Week will be observed from April 10 through 14. A handful of individuals have been singled out to receive particular honors and they are profiled on pages 6 through 9. But actually, the week's activities are designed to honor all MU staff for their work throughout the year.

The Staff Advisory Council sponsors the event. This year's theme is "Strength in Variety." Here's what's planned:

■ **1:30 p.m., Monday, Jesse Hall Auditorium:** Chancellor Charles Kiesler presents four \$1,000 Staff Recognition Awards to one member of each staff subgroup. The Mick Deaver and Barbara Uehling awards of \$500 also will be presented. Staff with 20, 25, 30 and 35 years of service will receive individual certificates and those with 5, 10 or 15 years will be recognized. Refreshments will be served.

■ **Noon, Tuesday, Jesse Wrench Auditorium, Memorial Union South:** A fashion show will feature attractive, yet affordable, styles from local businesses modeled by staff members, male and female. Please bring a can of food for the food drive.

■ **Noon, Wednesday, Jesse Wrench Auditorium, Memorial Union South:** MU's musicians and entertainers of all kinds will take to the stage to entertain fellow staff. Please bring a can of food for the food drive.

■ **11 a.m., Thursday, Student Recreation Center:** Staff are invited to come learn about services and health activities available to them here. As an added bonus, staff have free use of the facility and equipment from April 10 through 16.

■ **Friday, Stotler Lounge, Memorial Union North:** Cultural Diversity in the Workplace is the topic of an intervention theater that approaches diversity with a respect for individuals and differences in the workplace. Two sessions will be offered: from 9:30 - 11:30 a.m. and from 1:30 - 3:30 p.m. Enrollment for each session is limited to 200. Call 882-8601 to register.

■ **Noon to 1 p.m., Friday, Room 701 Ellis Fischel Cancer Center:** Diversity Workshop will be offered creating an awareness of diversity issues. Call 882-8601 to register.

Staff are asked to support the Columbia community by bringing non-perishable and canned food to the fashion and variety shows. Items will be given to people in need throughout the area. Shampoo, detergent, soap, toilet paper, paper towels, toothbrushes and toothpaste also are welcome.

## Service Award Recipients

### 35 YEARS

Anna Louise Allen, *Building Services*  
Louis Allen, *Maintenance & Grounds*  
Jerry Ray Bowser, *Energy Management*  
Floyd Brown, *Procurement/Materials Management*  
Sandra Sue Clark, *School of Natural Resources*  
James Larry Cunningham, *Animal Science*  
Wanda Arlene Davis, *Cashier/Payroll/Student Loans*  
Oleta L. Edwards, *Library*  
Donald Hill, *Procurement/Materials Management*  
Lena Pearl Kelley, *Sterile Processing*  
Gene Dale Kite, *Maintenance & Grounds*  
Mary Ruth Smith, *Animal Science*  
Harold Dean Sontag, *Multipurpose Auditorium*  
Donald D. Thompson, *Pathology*  
Harry L. Wilson, *TV Station*

### 30 YEARS

Carol Anita Baldwin, *Dean of Engineering*  
Barbara Birmingham, *Campus Dining*  
Carol Jean Bruce, *Biological Sciences*  
Howard Lee Davenport, *Energy Management*  
Jerry Wayne Dehaven, *Plan, Design & Construction*  
Linda Jean Easley, *Director of Campus Facilities*  
Janice Lee Eubanks, *Residential Life*

Susan L. Fewell, *Registrar & Director of Admissions*  
Chester Dean Ganaway, *Mail Room*  
Shirley Dean Garrett, *Multipurpose Auditorium*  
James Robert Gibbs, *Maintenance & Grounds*  
Kee W. Groshong, *Vice Chancellor Administrative Services*  
Everett Dale Gruber, *Residential Life*  
Marie Elayne Haight, *Campus Computing Facilities*  
Frances Lenora Hicks, *Campus Dining*  
Evelyn Lucille King, *Nutrition & Food Services*  
Brevard J. Law, *Vice Provost Extension*  
Jerry Gilbert Mockbee, *Printing Services*  
Charles L. Murray, *Plan, Design & Construction*  
Riley Morris Nichols, *Plan, Design & Construction*  
Doris Nole, *Ellis Outpatient Clinics*  
Donaleigh Richardson, *Associate Director Heart Center, General Administration*  
William H. Rogers Jr., *Printing Services*  
Alvin Wayne Scott, *Plant Engineering*  
Kenneth L. Spencer, *Psychology*  
John Lemuel Vandelicht, *Building Services*  
Robert Joe Wright, *Respiratory Care Services*

### 25 YEARS

Helen J. Armontrout, *Patient Accounts*  
Helen E. Bachman, *Registrar & Director of Admissions*  
Valerie Gayle Baker, *Physical Medicine & Rehabilitation*  
Woodrow Stevenson Baker, *Energy Management*  
Betty J. Baysinger, *Health Related Professions*  
Lester Leroy Bealmear, *Maintenance & Grounds*

John Beaumonte, *Campus Computing Facilities*  
Deborah Sue Bennett, *Clinical Dietetics*  
James S. Betz, *Building Services*  
Danny D. Bright, *Plant Engineering*  
Sarah Kathryn Brown, *Registrar & Director of Admissions*  
Nancy Ellen Burnett, *Information Services*  
James D. Clark, *Associate Director Heart Center, General Administration*  
Georgia Belle Collins, *Clinical Dietetics*  
Raymond Allen Cornell, *Watchmen*  
Gary Alan Cunningham, *Library*  
James Beverly Curtis, *Horticulture & Agroforestry Center*  
James A. Dougherty, *Plant Engineering*  
Gerald Raymond Duffus, *Watchmen*  
Ernest Gutierrez, *Publications & Alumni Communication*  
Viola C. Hagans, *Veterinary Medicine & Surgery*  
Pamela Jane Hall, *Child Health*  
Charles Russell Harlow, *Information Services*  
Karen Annette Harms, *Show-Me State Games*  
Robert L. Hickem, *Recreational Services*  
Patricia Kay Ives, *Development*  
Dennis Roscoe Jacobs, *Forage Systems Research Center*  
Josephine Johnson, *Library*  
Wilbert James Jones, *Building Services*  
James Eugene Kelly, *Mail Room*  
Carolyn Ann Kemper, *Vice Chancellor Administrative Services*  
Janice Ann Koch, *Cashier/Payroll/Student Loans*  
Judith Elaine Lammers, *Sponsored Program Administration*  
Larry David McKenzie, *Maintenance & Grounds*  
Linda Sue Moeller, *Dean of Arts & Science*  
Floyd Leon Murray, *Building Services*  
Harri Anne Palmer, *Art*  
Barry Duane Pemberton, *Campus Mail Service Facility*  
Sue Bet Porter, *Animal Science*  
Harold Eugene Ravenscraft, *Plant Engineering*  
Eugene Fieldon Reed, *Maintenance & Grounds*  
Harrison C. Rogers, *Campus Mail Service Facility*  
Linda Kay Salmon, *Veterinary Medicine & Surgery*  
Thaney Scott-Oswald, *Pathology & Anatomical Science*  
Carol J. Segarini, *Parking & Transportation Services*  
Gerald Lee Smith, *Building Services*  
Sharon Dawn Smith, *Nutrition & Food Services*  
Robert Wayne Southerland, *Energy Management*  
Vickie L. Spate, *Research Reactor*  
Scott Philip Stager, *Campus Computing Facilities*  
Charles Loring Turner, *Campus Computing Administration*  
Bertha Lee Warrick, *Coronary Care Unit*  
Ruby Ann Welday, *Registrar & Director of Admissions*  
Mary Ann Wiles, *Surgery*  
Linda Faye Wilhite, *Development*  
Sueda Lee Wilson, *Printing Services*

### 20 YEARS

Patrice Albert, *Biological Sciences*  
Alma Fay Anthony, *Dean of Business & Public Administration*  
Louise Barnett, *Molecular Biology*  
Marilyn E. Beissenherz, *Veterinary Pathology*  
Ellen Louise Blair, *Library*  
Joyce Lee Bradshaw, *Linen Services*  
Betty Jean Buckner, *Cashier/Payroll/Student Loans*  
Peggy Jean Clevenger, *Pathology*  
Sally Irwin Coats, *Internal Medicine*  
Sandra Jean Coleman, *Campus Mail Service Facility*  
Maureen Daly, *Medical Informatics*  
Emily Susan Bent Danner, *Library*  
Ruth Ellen Davis, *Linen Services*  
Susan H. Demian, *International Programs*  
Annabell W. Dexheimer, *Director of Campus Facilities*  
Duane Jewell Ederati, *Energy Management*  
Vernice O. Fowler, *Plant Engineering*  
Annette Marie Glatz, *Food Science & Human Nutrition*  
James Robert Hagans, *Printing Services*  
Nadine Faye Henry, *Forage Systems Research Center*  
Dorothy Jean Hickam, *Housekeeping*  
Cheryl Sue Holman, *Agronomy*  
Alma Beatrice S. Inscore, *Dean of Law*  
Betty Y. Jen, *Animal Science*  
Gary Thomas Johnson, *Campus Mail Service Facility*  
Peggy Lee Kemp, *Housekeeping*  
Robin Ann Kespohl, *Library*  
Horace Lannon Kivett, *Plant Engineering*  
Evelyn K. Lindell, *Dean of Agriculture*  
Walter A. Meyer, *Research Reactor*  
Jamie Sue Mitchell, *Accounting*

**SERVICE AWARD RECIPIENTS**

Continued from Page 3.

Opal Lee Mitchell, *5 East Surgery*  
 Kathleen Jo Morton, *4 East Medicine*  
 Gene Keith Moum, *Research Reactor*  
 Clifford Donell Nevels, *Campus Dining*  
 Mary L. Nowlin, *University Physicians Patient Accounting*  
 Velma Lou Nunnenkamp, *Cashier/Payroll/Student Loans*  
 Richard Edward Oliver, *Health Related Professions*  
 Janice Palmer, *Residential Life*  
 Mona Sue Perrin, *Surgery*  
 Duane Perry, *Campus Computing Facilities*  
 Sylvia Petro, *Surgery*  
 Tim Edward Phillips, *Maintenance & Grounds*  
 Mary Isabelle Porter, *Anthropology*  
 Donald Lee Riddle, *Molecular Biology*  
 Gordon C. Rogers, *Emergency Suite*  
 Dennis M. Russell, *Research Support Services*

Martin P. Ryan, *Child Health*  
 Jeffrey Fredric Schill, *Associate Director Heart Center, General Administration*  
 Leland Terry Smith, *Building Services*  
 Andrea Gloria Weissmann, *Missouri Institute of Mental Health*  
 David E. Wendell, *Veterinary Microbiology*  
 Jeffrey Brian Wilcox, *Museum of Art & Archaeology*  
 Mary K. Windmoeller, *Pathology*  
 William B. Yelon, *Research Reactor*  
 Alvin Zechiel, *Ellis Laboratory*

**15 YEARS**

Jimmie Algieri, *Plant Engineering*  
 Vicki Lee Algieri, *University Physicians Patient Accounting*  
 Jack Russell Allen, *Publications & Alumni Communication*  
 Debbie Susan Alviso, *Dean of Education*  
 Robert Dean Anderson, *Campus Dining*

Dana Kay Armontrout, *Vice Provost Extension*  
 Susan R. Asher, *Nursing NICU*  
 Freddie L. Baker, *Learning Center*  
 Robert Michael Baker, *Campus Computing Facilities*  
 Zarrine Banerji, *Pathology*  
 Mark Allen Banks, *4 West Medicine*  
 Julie Barry, *Agronomy*  
 Joe Donavan Baskett, *Research Reactor*  
 Kathy J. Basnett, *Philosophy*  
 George Lewis Baylor, *Veterinary Medicine & Surgery*  
 John Max Beezley, *Information Services*  
 John Belaka, *Ellis Engineering*  
 Carole Lynne Belgya, *Multipurpose Arthritis Center*  
 Barbara Ann Benney, *Plan, Design & Construction*  
 Robert Carl Brendel, *Intercollegiate Athletics*  
 Joseph Myron Brewer, *University Physicians Patient Accounting*  
 Carolyn Sue Bunton, *Medical Records*  
 Terry Leonard Burk, *Maintenance & Grounds*  
 Nancy Hugo Cady, *5 West Surgery*  
 Eldon H. Calvin, *Printing Services*

# Staff Recognition Week '95

## STAFF — STRENGTH IN VARIETY

**April 10-14**

*A week of programs and activities for staff in recognition of service to the University. Programs are free, and ALL STAFF ARE ENCOURAGED TO PARTICIPATE.*

### Staff Recognition Ceremonies

**Monday, April 10**  
**1:30 to 3:30 p.m.**  
**Jesse Hall Auditorium**

Chancellor Charles Kiesler will present the four \$1,000 Staff Recognition Awards to one member of each subgroup: Administrative/Professional, Crafts/Maintenance, Secretarial/Clerical and Technical/Paraprofessional. The Mick Deaver and the Barbara S. Uehling Awards of \$500 also will be presented. Staff with 20, 25, 30 and 35 years of service will receive individual certificates. Staff with 5, 10 or 15 years of service to the University will be recognized. Refreshments will be served following the ceremony.

**T U E S D A Y , A P R I L 1 1**

**Fashion Show**

Noon to 1 p.m.  
**Memorial Union Auditorium (South Building, Wrench Auditorium)**  
 Come to a fashion show that will again feature attractive, yet affordable styles from many local business. You'll see a "variety" of fashions for both men and women with your co-workers as the models! You are encouraged to bring a can of non-perishable food — these items to be distributed through the Columbia Community Food Bank. Help us to show Columbia the support they have from MU Staff.

**W E D N E S D A Y , A P R I L 1 2**

**Variety Show**

Noon to 1 p.m.  
**Memorial Union Auditorium (South Building, Wrench Auditorium)**  
 Musicians and entertainers of all kinds have gotten their acts together and will take to the stage to entertain their fellow staff members. Come join us to see the "variety" of talent throughout MU. A donation of a can food item is encouraged. These items will be distributed through the Columbia Community Food Bank.

**T H U R S D A Y , A P R I L 1 3**

**Health & Wellness Fair**

11 a.m. to 2 p.m.  
**Student Recreation Center (Brewer/Rothwell Gymnasium)**  
 Come and learn all about the services and health activities available to the staff. There will be informational booths, aerobic demonstrations (you are invited to participate!) and free health screenings. As an added bonus, staff members will have FREE use of the facility and equipment for the week of April 10 - 16. Take time out for yourself! You will feel better!!

**F R I D A Y , A P R I L 1 4**

**Cultural Diversity in the Workplace**

1) 9:30 to 11:30 a.m.      2) 1:30 to 3:30 p.m.  
**Stotler Lounge                      Stotler Lounge**  
**Memorial Union North      Memorial Union North**  
 An "intervention theater" production that approached diversity with a respect for individuals and differences in the framework of the workplace. Seating limited to 200, call 882-8601 to register. Enrollment is on a first-come, first served basis.

**Diversity Workshop**

Noon to 1 p.m.  
**Room 701 Ellis Fischel**  
 Focus of this program is to create an awareness of diversity issues. Discuss how difference among staff members can lead to stronger teams.

**O T H E R A C T I V I T I E S**

**Food Drive/Collection**

Please bring your non-perishable can food items to the Fashion Show or the Variety Show. Additional items needed are shampoos, detergents, soaps, toilet paper, paper towels, toothbrushes and toothpaste. Items will be distributed to local organizations that assist persons in need throughout the Columbia area. This is an opportunity to show our "strength" and support to the Columbia Community.

presented by



**Staff Advisory Council**  
 WORKING FOR YOU

Jean Mary Camden, *Pharmacology*  
 Tammy Merlean Carmichael, *Food Science & Human Nutrition*  
 Sally Ann Cleek, *Vice Provost Extension*  
 David Raymond Cleveland, *Campus Dining*  
 Marcy L. Coley, *Director of Campus Facilities*  
 Melvin Ernest Cooper, *Delta Center*  
 Bruce Taylor Cox, *Health Related Professions*  
 David Ray Cox, *Golf Course*  
 Sandra F. Cox, *Nursing NICU*  
 Jay Vaughn Craig, *Campus Computing Facilities*  
 Virginia Rochelle Cross, *Nutrition & Food Services*  
 Martha Lou Crump, *Chemistry*  
 Judi Dawson, *Vice Provost Minority Affairs/Faculty Development*  
 David Alan Dunkin, *Academic Support Center*  
 Richard Gordon Dunn, *Printing Services*  
 Karen Kealoha Ehler, *Molecular Microbiology & Immunology*  
 Becky Lynn Estes, *Cashier/Payroll/Student Loans*  
 John William Farmer, *Research Reactor*  
 Sandra Fischer, *Ellis Administrative Services*  
 Cynthia D. Franke, *Nursing NICU*  
 Karen Kay Furlong, *Medical Records*  
 Charlotte Ann Fussner, *Institutional Research, Budget & Planning*  
 Andree M. Gelatt, *Acute Rehabilitation*  
 Roxanne Marie Gentry, *Child Health Clinic*  
 Wilbur Dean Gilmore, *Maintenance & Grounds*  
 Cynthia L. Glascock, *Animal Science*  
 Maurice Albert Goldman, *Building Services*  
 Paulette Grimes, *Minority Student Programs*  
 Pinky Sue Guinnip, *Nutrition & Food Services*  
 Elizabeth Lou Gunn, *Admissions*  
 Gregory Floyd Gunn, *Research Reactor*  
 Carrie L. Hadden, *Medical Records*  
 Larry E. Hall, *Ellis Support Services*  
 Wood Hatton Jr., *Building Services*  
 Floyd Levarn Hayes, *Residential Life*  
 Mary Crawford Hegeman, *Personnel*  
 Judith Anne Heidlage, *Emergency Suite*  
 Judith Ellen Hein, *Surgical Services*  
 Jerry D. Hemeyer, *Ellis Pharmacy*  
 Patsy Elaine Hinklin, *Agronomy*  
 Lindy Morrow Holley Jr., *Pharmacy*  
 Francine Marie Holmes, *Procurement/Materials Management*  
 Diana Klemme Hood, *Personnel*  
 Randall Dale Hudson, *Intercollegiate Athletics*  
 Mary Hughes, *Perinatal Unit*  
 John Allen Humlicek, *Residential Life*  
 Gary Orlando Hutchen, *Residential Life*  
 Teresa Ellen Ireland, *Green Meadows - Pediatrics*  
 Helen Jankowski, *Nursing Information Services*  
 Ronnie Jefferson, *Maintenance & Grounds*  
 Claudia Sue Jensen, *Student Services*  
 Joyce Marian Jesse, *Student Life*  
 Claude Donald Johnson, *Dean of Medicine*  
 Gregory Kent Johnson, *Campus Computing Services*  
 Clara Leneir Jones, *Library*  
 Reed Jones, *Student Services*  
 William C. Jones, *Housekeeping*  
 Alan Thurman Kennedy, *Building Services*  
 Deborah McLean Kesterson, *Vascular Laboratory*  
 James Micheal Kilfoil, *Research Reactor*  
 Clayton Dale Kittle, *Cardiology Laboratories*  
 Herman E. Klippel, *Maintenance & Grounds*  
 David Arthur Knipp, *Psychology*  
 Paula Marie Koebel, *Dean of Engineering*  
 Lawrence Francis Kuntz, *Plant Engineering*  
 Susan M. Langhorst, *Environmental Health & Safety*  
 Benjamin William Leach, *Printing Services*  
 Patricia Anne Linhardt, *Nursing Nursery I*  
 Anthony J. Logan, *Building Services*  
 Constance Louise Love, *Supply Distribution*  
 Jenifer Lee Lummis, *Campus Computing Facilities*  
 Jacalyn Margaret Mankey, *Personnel*  
 David Robert Maupin, *Agricultural Economics*  
 Sara Jane McCarty, *Sameday Surgery Center*  
 Mary Elizabeth McDaniel, *Surgery*  
 Michael Douglas McKown, *Dalton Cardiovascular Research Center*  
 Robyn Watson McKown, *Molecular Microbiology & Immunology*  
 Karen Kay McLaughlin, *Veterinary Microbiology*  
 Marilyn June McMillen, *Pediatrics*  
 Richard L. Mead, *Energy Management*  
 Leilah R. Medlin, *Delta Center*  
 Melissa A. Megas, *Library*  
 Clifford L. Mongler, *Agricultural Engineering*

Willard Harold Monroe, *Plant Engineering*  
 Richard Allen Moore, *Pharmacy*  
 Virginia Lee Morrison, *Pathology*  
 Larry Mountjoy, *Plant Engineering*  
 Eugene Joseph Nelson, *Maintenance & Grounds*  
 Janet Sue Nicholson, *Veterinary Pathology*  
 Thomas Anthony Niekamp, *University Hospital & Clinics Hospital Operations Director*  
 Susan M. Novinger, *Veterinary Biomedical Sciences*  
 Rick Allen Oglevie, *Pathology*  
 Paul Roger Olesen, *Ophthalmology*  
 Garnet L. Payne, *Intercollegiate Athletics*  
 Dollie Perkins, *Ellis Purchasing/Central Supply*  
 Larry F. Phillips, *Residential Life*  
 Richard Poe, *Golf Course*  
 Georgeanne Barlow Porter, *Registrar & Director of Admissions*  
 Sonia Kay Potts, *University Stores*  
 John William Preus, *Student Life*  
 Gregory Alvin Purdy, *Veterinary Pathology*  
 James W. Putnam, *Building Services*  
 Judith B. Renner, *Health Services Management*  
 Bettejane Colleen Rudel, *Analytical Services*  
 Kevin Dwayne Scantlan, *Information Services*  
 Elizabeth Ann Schultz, *Accounting*  
 Patricia Ann Shanks, *Center/Research Social Behavior*  
 Edwin Henry Shelton, *TV Station*  
 Vivian Jean Simpson, *Linen Services*  
 Gleneva Sims, *Sameday Surgery Center*  
 Patricia Louise Snellen, *Pathology*  
 Debra Sue Stark, *Pathology*  
 Bette Crockett Stuart, *Library*  
 Nancy G. Stull, *Dean of Business & Public Administration*  
 Wanda Lee Suhrbier, *Registrar & Director of Admissions*  
 Mary Lucille Swanson, *Alumni Activities*  
 Richard David Tollerton, *Rusk Rehabilitation Nursing Services*  
 Dale Edward Treece, *Research Support Services*  
 Lora June Van Beek, *Cashier/Payroll/Student Loans*  
 Gary Marshall Walden, *University Stores*  
 Karl Eugene Washington, *Campus Mail Service Facility*  
 Dale Ray Wesselmann, *Facilities Design & Development*  
 Joan Lavone Westcott, *Office of Research*  
 Hsiao-Mei Wiedmeyer, *Child Health*  
 Diane Rose Williams, *Vice Provost Minority Affairs/Faculty Development*  
 Steven A. Williams, *Cooperative Extension*  
 Tonya L. Wilson, *Printing Services*  
 Lawrence G. Windmoeller, *Pharmacy*  
 Ronetta Diana Woods, *Campus Dining*  
 Rhonda Jo Woody, *Practical Arts & Vocational-Technical Education*  
 Karen Sue Worley, *Publications & Alumni Communication*  
 Larry Eugene Yeakey, *Building Services*  
 Cheryl A. York, *Student Health Center*  
 Peggy K. Young, *Internal Medicine*  
 Brenda Gayle Zimmer, *Maintenance & Grounds*  
 Michael C. Zimmer, *Printing Services*

### 10 YEARS

James B. Acton, *Printing Services*  
 Penny Adams Kraus, *Child Health*  
 Armine Alioto, *Cardiology Labs*  
 Dean Christian Andersen, *Residential Life*  
 David Allen Anderson, *TV Station*  
 Kathryn M. Anderson, *Pulmonary Function*  
 Suzanne Andrews, *Cooperative Extension*  
 Rhonda Anthony, *Surgery*  
 Yvonne J. Ball, *Printing Services*  
 Christopher Barker, *Campus Computing Administration*  
 Clint A. Berkley, *Telecommunications*  
 Traci Ann Blackwell, *Business Services*  
 Todd G. Bocklage, *Respiratory Care Services*  
 Dorothy Mae Brackett, *Ellis Housekeeping/Linen*  
 Kathy Jo Brady, *Cardiology Labs*  
 Jim J. Brewer, *Clinical Engineering*  
 Bonnie E. Brown, *Printing Services*  
 William E. Brown, *Recreational Services*  
 Robert J. Burke, *International Programs*  
 Barbara H. Burlison, *Student Life*  
 Diane Renee Burnett, *Biological Sciences*  
 Jane E. Burnett, *Pharmacology*  
 Rochelle Bernita Butler, *Supply Distribution*  
 Cinda K. Cannon, *Internal Medicine*  
 Tina Carmack, *Animal Science*  
 Cindy K. Cellar, *University Physicians Ambulatory Care*  
 Martha T. Chaney, *Health Science Institutional Review Board*  
 Cherie J. Chapman, *Veterinary Diagnostic Laboratory*

Mindy L. Cherrington, *Thoracic ICU*  
 Harry Christianson, *Plant Engineering*  
 Mary Elizabeth Chronister, *Nursing NICU*  
 Anna Mae Clawson, *Vice Provost Extension*  
 Jerry Dale Clevenger, *Development*  
 Coy Otis Cobb Jr., *Ophthalmology Clinic*  
 Sandra K. Coleman, *Intercollegiate Athletics*  
 Stephen L. Coleman, *Plan, Design & Construction*  
 Bobby Colley, *Veterinary Biomedical Sciences*  
 Randall S. Conklin, *Maintenance & Grounds*  
 Christy Marie Copeland, *Dean of Agriculture*  
 James Alan Corbett, *Ambulance Service*  
 Brian Nelson Cottle, *TV Station*  
 Theresa Nell Cox, *Missouri Institute of Mental Health*  
 Bridget F. Crabtree, *Surgery*  
 Judy K. Craig, *Student Health Center*  
 Monroe L. Crites, *Building Services*  
 Robert E. Crockett, *Radiology*  
 Donald K. Dahlke, *Supply Distribution*  
 Carl Fredrick Dailey, *Residential Life*  
 Richard E. Daniel, *Biological Sciences*  
 Kimberly L. Daugherty, *Library*  
 George Robert Davidson, *Housekeeping*  
 Jinnie Louise Deakins, *Family Practice Clinic*  
 Meda Delashmutt, *Museum of Art & Archaeology*  
 Kathleen Emerson Doisy, *School of Natural Resources*  
 Manuel Edward Douglas, *Housekeeping*  
 Edward Drane, *Plan, Design & Construction*  
 Kathy A. Drexler, *Student Health Center*  
 James Alan Duffield, *Security & Parking Services*  
 Ronald W. Durham, *Nutrition & Food Services*  
 Esther Marie Durk, *Library*  
 Kent David Edwards, *Campus Computing Services*  
 Keith A. Eldridge, *Missouri Institute of Mental Health*  
 Larry O. Elliott, *Plan, Design & Construction*  
 Donald R. England, *Facilities Design & Development*  
 Tyrone Enyart, *Warehouse Operations*  
 Dee Ann Speiser Erickson, *University Physicians Plan Administration*  
 Karen K. Eubanks, *Library*  
 Susan E. Even, *Student Health Center*  
 Veronica Jean Feilner, *Practical Arts & Vocational-Technical Education*  
 Priscilla D. Foster, *Veterinary Medicine & Surgery*  
 Lee A. Gabelsberger, *Campus Computing Administration*  
 Deborah C. Garrett, *Physical Medicine & Rehabilitation*  
 Frederick Garver, *Plan, Design & Construction*  
 Patricia L. Gash, *Printing Services*  
 Ramona V. Geery, *Agricultural Economics*  
 Julia Fruth Grasela, *Clinical Dietetics*  
 Jerry R. Griffen, *Surgical Services*  
 Helen June Griggs, *Vice Provost Extension*  
 Tammy Guilford Davis, *Library*  
 Stephen Gunn, *Ambulance Service*  
 Margery R. Gurwit, *Campus Computing Services*  
 Gail J. Hagans, *Vice Provost Extension*  
 Timothy L. Haithcoat, *Geography*  
 Eddy D. Harmon, *Plan, Design & Construction*  
 Dan Lee Heaviland, *University Physicians Patient Accounting*  
 Eddie Robert Hedrick, *Quality Assurance/Risk Management*  
 John Lee Henrikson, *Cashier/Payroll/Student Loans*  
 Janice Heumann, *Vice Provost Extension*  
 Pamela Sue Heun, *Nursing NICU*  
 Tammy L. Hickman, *Obstetrics & Gynecology Services*  
 Mark Gail Hicks, *Information Services*  
 Faye Ann Hill, *Vice Provost Extension*  
 Tonya Ledora Hill, *ENT Clinic*  
 Daniel D. Hirst, *Cep-Mechanical Engineering*  
 Mary Katharine Hoard, *Campus Computing Services*  
 James William Hollis, *Police*  
 David A. Holst, *Procurement/Materials Management*  
 Donald W. Hudson, *Ellis Engineering*  
 Mark Steven Hunt, *Maintenance & Grounds*  
 William Melvin Hylar, *Residential Life*  
 Letensie T. Isaac, *Nursing Nursery I*  
 Reno Eugene Jackman, *Building Services*  
 Brad Jacobson, *Recreational Services*  
 Charles S. James, *Dean of Agriculture*  
 Toni Ruth Janish, *Obstetrics & Gynecology Services*  
 Robert D. Johns, *Energy Management*  
 Dan W. Johnson, *Procurement/Materials Management*  
 Jane Johnson, *Medical Informatics*  
 Judith Janine Johnson, *Sameday Surgery Center*  
 Linda V. Johnson, *Campus Computing Services*  
 Gregory D. Kelly, *Veterinary Biomedical Sciences*  
 June Charlene Kelly, *Dean of Veterinary Medicine*  
 Alan R. Ketring, *Research Reactor*

## SERVICE AWARD RECIPIENTS

Continued from Page 5.

Beth Ann Key, *Clinical Dietetics*  
 Kevin B. Key, *Building Services*  
 Pamela Jean Kite, *Surgical Services*  
 Charles L. Kribbs, *Research Reactor*  
 Aloysius A. Kullman, *Clinical Engineering*  
 Linda Langston, *Vice Provost Extension*  
 Rolf Werner Laun, *Veterinary Diagnostic Laboratory*  
 Alverda Gail Lawrence, *Anthropology*  
 Davida B. Layer, *Surgical Services*  
 Elaine Denise Litwiller, *School of Nursing*  
 John Long, *Residential Life*  
 Alan J. Loshbaugh, *TV Station*  
 George A. Lyons, *Plan, Design & Construction*  
 Rankin F. Martin, *Veterinary Diagnostic Laboratory*  
 Brent S. Mattox, *Environmental Health & Safety*  
 Anita Ray Mayes, *Research Reactor*  
 Mary Anne McCollum, *Student Life*  
 Michael R. McGee, *Ellis Operating Room*  
 Cheryl Lynn McKim, *Perinatal Unit*  
 Cynthia M. McLaughlin, *TV Station*  
 Dennis Meyer, *Energy Management*  
 Barbara Jean Miles, *Rusk Social & Affiliate Services*  
 Richard Miller, *Energy Management*  
 Donna Sue Minor, *Ellis Short Stay Center*  
 Mary Katherine Misplay, *Surgical Services*  
 Debbie Mitchell, *Dean of Agriculture*  
 Mabel Lou Mitchell, *Building Services*  
 Alice J. Morison, *4 East Medicine*  
 Leona Ruth Morse, *Library*  
 Carol D. Moseley, *Rusk Rehabilitation*  
 Barbara A. Mountain, *Practical Arts & Vocational-Technical Education*  
 Betty Jean Murphy, *Campus Computing Administration*  
 Paul J. Musket, *University Stores*  
 Benton Naylor, *Bradford Farm*  
 Carol M. Newton, *Vice Provost Extension*  
 Cecil Mae Nichols, *Surgery*  
 Randy Nichols, *Printing Services*  
 Sherry J. Nichols, *Ellis Operating Room*  
 Adele Yvonne Nickolaus, *Psychology*  
 Gerry David Novak, *Campus Computing Services*  
 William Henry Olive, *Ellis Radiology/Nuclear Medicine*  
 Nancy E. Olson, *Student Health Center*  
 James L. Oney, *Energy Management*  
 Barbara Jeanne Onofrio, *Sameday Surgery Center*  
 Lisa Orbals, *Pediatric Cardiology*  
 David Overstreet, *Energy Management*  
 Larry Edward Palmer, *Supply Distribution*  
 Susan Palmer, *Anesthesiology*  
 Stuart B. Palonsky, *Honors College*  
 Edward Parker, *Curriculum & Instruction*  
 Angi Lea Pauley, *Education & Training/Hospital & Clinics*  
 Kimberly L. Penton, *Plan, Design & Construction*  
 Sonia A. Perkins, *Housekeeping*  
 Ronald W. Persinger, *Student Services*  
 Judith K. Petrillose, *Dean of Agriculture*  
 Sharon M. Pike, *Plant Pathology*  
 Jeffery D. Pipes, *Multipurpose Auditorium*  
 Cheryl R. Poelling, *School of Law*  
 Mark Poore, *Rusk Rehabilitation*  
 Elinor Van Dyke Powell, *Rusk Rehabilitation*  
 Kathy J. Pritchett, *Vice Provost Extension*  
 Kenneth R. Pruet, *Emergency Suite*  
 Elaine Rehmer, *Internal Medicine*  
 Mary K. Rhoads, *University Physicians Ambulatory Care*  
 Carl F. Roettgen, *Printing Services*  
 Sharon Kay Rose, *Dialysis & Transplant*  
 Mary Ellen Roth, *Biochemistry (Agriculture)*  
 Mark Anthony Sapp, *TV Station*  
 Susan Jo Satterlee, *Vice Provost/Dean of Graduate School*  
 Roderic D. Schlotzhauer, *Physics*  
 Gloria J. Schmock, *University Stores*  
 Michele Mary Schutte, *Adolescent Unit*  
 Catherine Cox Scroggs, *Student Life*  
 Sharon Ann Sessions, *Pharmacy*  
 James Arrland Shaw, *Rusk Rehabilitation*  
 Pamela J. Skeene, *Building Services*  
 Arlene Slomp, *Chancellor*  
 Dale A. Smith, *Student Services*  
 Leonard M. Snider, *TV Station*  
 Deborah Ann Sprague, *Student Financial Aid*  
 Daniel Stariwat, *Intercollegiate Athletics*  
 Donald R. Stevens, *Associate Director Facilities*  
 Lisa Embry Stevenson, *University Stores*  
 Bonnie F. Stewart, *Practical Arts & Vocational-Technical Education*

# Barbara S. Uehling Award

**John Heyl**  
 Director, International Center

Colleagues say John Heyl is a "yes man." But they don't mean that the director of the campus-wide International Center simply goes along with the way things have always been done. What they mean is that Heyl gets results.

"Countless times, colleagues and I have shared our projects and dreams with John only to hear from him, 'Yes, I'm certain we can find a way to do that.'"

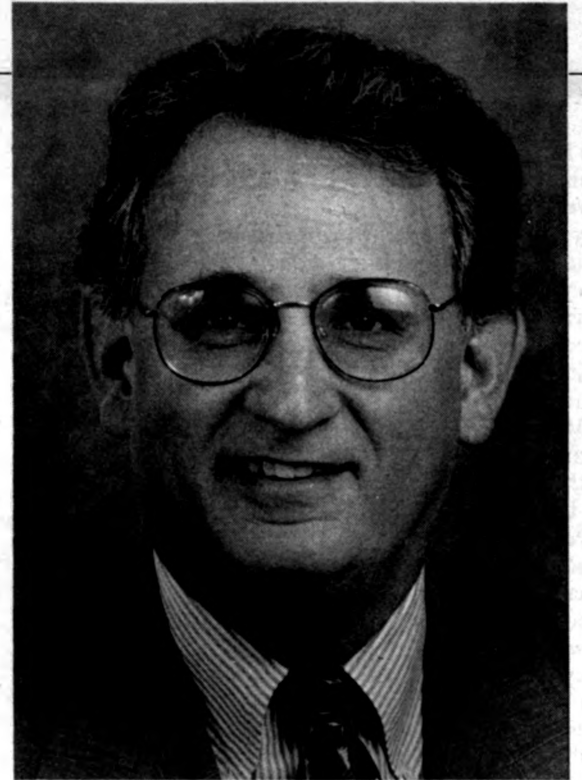
Working on international programming is fun because John helps us bring to fruition our heretofore 'dreamed of' international projects," says one faculty member.

Heyl is the 1995 winner of the Barbara S. Uehling Award which recognizes administrative excellence. Some of his responsibilities include coordinating study abroad programs, international fellowships and scholarships, assisting with international programming on campus and meeting the needs of international students.

Because of a growing global interdependence, the international perspective becomes even more important at institutions like Mizzou. "The University is committed to educate students about the realities of life, and that means the realities of the world," Heyl says. "The University itself has to be engaged in those realities and know about them in a rather expert way."

That global influence is growing. When Heyl came to MU in 1988 as the first full-time director of international programs, students could choose between three study abroad programs. Now students have the option of 17 such programs administered directly by the International Center and another 10 or so offered in partnership between the center and individual departments.

"The campus has gained national and international recognition and resources as a result of John's enterprise," a colleague says. "His resourcefulness has



Rob Hill photo

opened opportunities for new and old hands who work in international studies and international research projects. His wonderful encouragement stimulates others to invest more of their time in international activities."

Members of the University community who have had contacts with the International Center point to a "can-do" attitude and a high level of morale among the center's staff. A lot of the credit, they say, goes to Heyl for constantly supporting professional development opportunities for the people who work for him.

But Heyl says it simply makes good sense to build the expertise of everyone at the International Center. "Teamwork among our staff has to work in order for our unit to be effective," he says. "When an individual's professional level is raised, you raise the whole professional level of the team. The idea is for individuals to bring back new information to the team."

Heyl credits much of the success his office enjoys to a growing appreciation of international programming. "A lot of what we have done in the past six or seven years is because of the enormous amount of support on campus," he says.

## Barbara S. Uehling Award for Administrative Excellence

Created by the Staff Advisory Council in 1986, the award honors the former chancellor's efforts on behalf of staff members. It acknowledges administrators who have demonstrated qualities of leadership and administrative excellence, and who have contributed to improved working conditions and the quality of life for Mizzou staff.

### Barbara S. Uehling Award Nominations

Becky Brandt, *Admissions*  
 Mary L. Brown, *Rusk Rehabilitation Center*  
 Suzanne Burton, *University Hospital & Clinics*  
 Debbie Calder, *University Hospital & Clinics*  
 Mike Dunn, *KBIA Radio*  
 Wendy Evans, *Ellis Fischel Cancer Center*  
 Susan Even, *Student Health Center*

Sue Gray, *Campus Dining Services*  
 Patricia Katzer, *University Hospital & Clinics*  
 Carol Nierling, *University Hospital & Clinics*  
 Rosemary Porter, *Nursing*  
 Richard Schaefer, *University Hospital & Clinics*  
 Alan Warden, *Campus Facilities*

Warren Stiefemann, *Physics*  
 Dan L. Stiers, *Facilities Design & Development*  
 Joyce J. Stotsky, *Information Services*  
 Michael D. Sundall, *Dean of Medicine*  
 Robert W. Taylor, *Institutional Research, Budget & Planning*  
 Robert Teerlinck, *Energy Management*  
 Robert Tharp, *Energy Management*  
 Susan Thornhill, *Maintenance & Grounds*  
 Vicki J. Trower, *School of Natural Resources*  
 Timothy Allen Turpin, *Surgery*  
 Linda H. Valentine, *Engineering Experiment Station*  
 Joann Wait, *Public Relations*  
 Susan Washington, *Printing Services*  
 Novia Jean Watts, *Pathology*  
 Susan Marie Wayt, *International Programs*  
 Keith John Weinholt, *Ellis Administrative Services*  
 Janice Gail Whitaker, *Pathology*  
 Joanne M. Willett, *Special Education*  
 Paula J. Willett, *University Stores*

Florence M. Wilson, *Cooperative Extension*  
 Tracy Jo Wirths, *Library*  
 James L. Yarbrough, *Pediatrics*

## 5 YEARS

Harland Eugene Abbott, *Registrar & Director of Admissions*  
 Pamela A. Adams, *Surgery*  
 Michael L. Adkins, *Academic Support Center*  
 Leo G. Agnew, *Human Resource Services (MU)*  
 Michael Aholt, *Maintenance & Grounds*  
 Gail M. Albers, *Surgical Services*  
 Jennifer Lynn Alexander, *Procurement/Materials Management*  
 Martha S. Alexander, *Library*  
 Cynthia Luczak Allen, *Student Health Center*  
 Rosebud Frances Amann, *Veterinary Diagnostic Laboratory*  
 Wendy D. Ancell, *Pathology*  
 Linda Kay Anderson, *Patient Accounts*

# Mick Deaver Memorial Award

## Jo Ann Vogt Learning Resource Specialist Campus Writing Program

Jo Ann Vogt is convinced she has the best job on campus.

"I love it," she says. "I love the unpredictability of it — no two days are exactly alike. It's great working with faculty, graduate teaching assistants and students, people who are deeply engaged in their subject matter, because it tests my knowledge and allows me to broaden and expand my knowledge base. I feel so honored to receive this award for doing what I love to do."

Vogt began tutoring while a graduate student pursuing a doctorate in English. She liked it so much, she decided to spend more time doing it. She tutored for three years at the Learning Center's writing lab and then served as co-director of that facility for three years. Since 1988 she has tutored students at the Campus Writing Program's intensive tutorial services (WITS) and directed WITS for five years.

She particularly enjoys working with students. Writing is important to them, she says, and she and her colleagues provide help with issues of grammar and punctuation. "But we're not here to edit students' papers. We're more interested in using writing as a means to teach content, to develop critical thinking skills and to help students learn to write in ways particular to specific disciplines. If you want to know whether a student understands photosynthesis, ask the student to write it down. You can't fake it."

With a bachelor's degree in zoology, as well as a master's in English, Vogt is especially helpful to students wrestling with a science-oriented writing assignment. She is equally adept at working with law students, having taught writing as part of the law school's Council on Legal Education Opportunity program.

Although graduate-level courses may be writing intensive, Vogt spends most of her tutoring time with undergraduates. They come to her with work at every



Rob Hill photo

stage of development, from questions about the assignment itself to final review "of what they believe to be the finished product — usually it isn't."

She also works closely with faculty who want to develop a writing intensive course. This year, she was co-coordinator of the writing program's semi-annual WI TA/Faculty workshop. She is recognized and respected as a key figure in the success of Mizzou's drive to improve students' writing skills. Says one psychology professor: "Through her work with faculty and teaching assistants on the development and refinement of WI courses, her expertise contributes directly to this critically important aspect of the education of undergraduate students."

And if faculty and teaching assistants are impressed with her, Vogt returns the sentiment. She admires their willingness to take on a writing intensive course, even though it will increase demands upon them.

"It's not going to get them a big raise in salary or extra leave time. What it is going to get them is more work," Vogt says. "But they do it because it's in their students' best interest, because students who write a microtheme on a subject are more likely to remember what they've learned. Our faculty do it because it's better teaching."

### The Mick Deaver Memorial Award

This award, established in 1980 by the Staff Advisory Council, recognizes a staff member who exemplifies the late University Police major's concern for fostering good relations with students. Deaver, a 1966 MU graduate, was associate director of University Police at the time of his death in an automobile accident in 1980.

#### 1995 Mick Deaver Memorial Award Nominations

- Patrick Akers, *KBIA Radio*
- Dana S. Brown, *Agriculture*
- Susan Even, *Student Health Center*
- John W. Green, *Political Science*
- Jerry L. Griffith, *Nursing*
- Jewetta Head, *University Hospital & Clinics*
- Mindy Henson, *Music*
- Laura J. Hertel, *Natural Resources*
- Gail Lawrence, *Anthropology*
- Amy Lenk, *Journalism*

- Delores Melloway, *Veterinary Medicine*
- LaNita Nichols, *Physiology*
- Sonya Nistendirik, *Education*
- Mary Penrod, *Missouri Unions*
- Suzanne Schoonover, *International Agriculture*
- Nancy Schultz, *International Admissions*
- Kathy Thompson, *Student Health Center*
- Michele Towns, *Campus Facilities*
- Shirley Whaley, *Campus Dining Services*
- Peter Whorf, *KBIA Radio*

- Darwin E. Anliker, *Police*
- Kathleen K. Anthony, *University Club/University Catering*
- Becky J. Arnold, *Rusk Rehabilitation*
- John H. Atkinson III, *Vice Provost Extension*
- Jeffrey R. Attebery, *Energy Management*
- Noor S. Azizan-Gardner, *Dean of Journalism*
- Linda Marie Bade, *Medical Records*
- Laura L. Baert, *Surgical Services*
- Douglas B. Bailey, *Rusk Rehabilitation*
- Joan Mary Baillargeon, *Ellis Social Services*
- Cynthia Ann Bair, *Radiology*
- Charles Baker, *Ellis Housekeeping/Linen*
- Catherine Bales, *Ophthalmology Clinic*
- Lisa Natalie Bartlett, *TV Station*

- Kathryn Elaine Bass, *Student Financial Aid*
- Jack A. Batterson, *Library*
- Jeffery L. Baxter, *Maintenance & Grounds*
- Laurie A. Beach, *Medical ICU*
- Elizabeth Ann Bean, *Internal Medicine*
- Julie A. Begemann, *Associate Director Trauma/Surgery*
- Nelia H. Bennett, *Ellis Administrative Services*
- Earl R. Berg, *Plan, Design & Construction*
- Diane M. Berkley, *Pharmacy*
- Carol Ann Bernhard, *Sameday Surgery Center*
- Linda G. Bethel, *Associate Director Medicine Center*
- Donald Eudene Betz, *Vice Provost Extension*
- Debra Boden, *Neurosurgical Unit*
- Nancy Carol Boland, *Perinatal Unit*
- Katherine Anne Bradfield, *Nutrition & Food Services*

- Jacqueline R. Brammer, *Burn Unit*
- Sue Braun, *Nursing NICU*
- Dana A. Briscoe, *Research Reactor*
- Rebecca A. Briscoe, *Patient Accounts*
- Barbara K. Brooks, *Sameday Surgery Center*
- Dennis G. Brown, *Printing Services*
- Juanita Brown, *Building Services*
- Stevie D. Bruce, *Building Services*
- Glenna K. Brucks, *Ellis Medicine*
- Linda A. Bryant, *Pathology*
- Mickie L. Bryson, *5 East Surgery*
- Stephanie D. Buckner, *Obstetrics & Gynecology Services*
- Jackie Bullock, *Building Services*
- Barbara K. Bunton, *Dean of Arts & Science*
- Gary W. Burch, *Ellis Food Services*
- Donald Robert Burkey, *Maintenance & Grounds*
- Paula J. Burks, *Surgical Services*
- Steven Earl Burry, *Plan, Design & Construction*
- Joseph G. Camoriano, *Agriculture Information*
- Belinda E. Campbell, *4 West Medicine*
- Linda K. Campbell, *Sponsored Program Administration*
- Angela Carol Campos, *Social Services*
- Kathleen Cella Micatka, *Cardiology Labs*
- Susan M. Cessac, *School of Law*
- Douglas W. Chambers, *Animal Science*
- Marian Chambers, *Associate Director Children's Hospital, Women's Services*
- Tammie S. Chandler, *Building Services*
- Tandra R. Chaudhuri, *Research Reactor*
- Jeffrey Scott Childers, *Cardiology Labs*
- Wanda J. Christian, *Radiology*
- Barbara Jean Clark, *Rusk Occupational Therapy*
- Dalana Clay, *Building Services*
- Susan L. Coats, *Neurosurgical Unit*
- Kandis Cobb, *Audiology Clinic*
- Jane E. Cochran, *Associate Director Medicine Center*
- Donna Cook, *Internal Medicine*
- Jane T. Cook, *Women's Health Care Unit*
- Jeffrey Mark Cook, *Ellis Engineering*
- Karen S. Cook, *Surgical Services*
- Harry C. Cooper Jr., *Vice Chancellor Administrative Services*
- Gina L. Cooper, *Pediatrics ICU*
- Rebecca A. Cooper, *TV Station*
- Robin B. Cosby, *Laboratory Animal Medicine*
- Mary Jane Craig, *Green Meadows Clinic*
- Linda Sue Crane, *Registrar & Director of Admissions*
- Jerri Cravens, *Medical ICU*
- Linda A. Crites, *ENT Clinic*
- Anna B. Cromwell, *Telecommunications*
- Eric W. Crump, *Learning Center*
- Larry Culberson, *Residential Life*
- Lezlie R. Dahlke, *Emergency Suite*
- Margaret K. Darkow, *Rusk Occupational Therapy*
- Dawn R. Davis, *Nursing NICU*
- Julie Ann Davis, *4 West Medicine*
- Lisa M. Davis, *Ellis Administrative Services*
- Robert J. Debellis, *Library*
- Sharon Marie Deming, *Student Life*
- Karen E. Derrick, *Clinical Dietetics*
- Lea Anne Diblasi, *Pediatrics ICU*
- Deborah D. Dickinson, *Printing Services*
- Alvera Wren Doerge, *Development*
- Richard M. Dryden, *Cep-Mechanical Engineering*
- Leslie E. Durk, *Plant Engineering*
- Donna Dykal, *Veterinary Medicine & Surgery*
- Dedra S. Earl, *Missouri Review*
- Kevin S. Earnest, *Pharmacy*
- Jamie L. Easley, *5 West Surgery*
- Peggy Ann Eichen, *Animal Science*
- Jerri Rae Eldridge, *Library*
- David A. Emerick, *Supply Distribution*
- Hugh Sprague Emerson, *Chemistry*
- Marty K. England, *Procurement/Materials Management*
- Shelly K. Ennis, *Maintenance & Grounds*
- Wanda L. Esry, *Supply Distribution*
- Wudnesh G. Eteffa, *Women's Health Care Unit*
- Jacqueline Kay Evenson, *Human Environmental Science*
- Dana Everts Boehm, *Museum of Art & Archaeology*
- Mark S. Fairley, *Surgery*
- Deborah K. Ferguson, *Campus Computing Administration*
- Stephanie Ferriere, *University Stores*
- Cynthia E. Feutz, *Associate Director Medicine Center*
- Sharon L. Fisher, *English*
- Charles R. Fleenor, *Plant Engineering*
- Dorothy Marie Forbes, *Nutrition & Food Services*
- Gail Mann Forrest, *Surgical Services*
- Rhonda K. Forrest, *University Physicians Finance*
- Scott E. Fox, *Veterinary Diagnostic Laboratory*

# 1st-rate employees

*The 1995 winners of the \$1,000 Chancellor's Staff Recognition Awards come from different areas of campus. But they all possess the personal and professional qualities required to be*

Outstanding Staff Award Nominations

Kathy Andrews, *University Hospital & Clinics*  
 Reginald Bentley, *University Hospital & Clinics*  
 Kathy Basnett, *Philosophy*  
 Anne Brooks, *Chancellor's Residence*  
 Lisa Bruce, *KBIA Radio*  
 Jane Cook, *University Hospital & Clinics*  
 Nila Emerich, *Biological Sciences*  
 Jan Eubanks, *Residential Life*  
 Gary Freic, *Registrar's Office*  
 Noor Gardner, *Journalism*  
 Cynthia Glascock, *Animal Sciences*  
 John M. Gordon, *Ellis Fischel Cancer Center*  
 John W. Green, *Political Science*  
 Karen Grieshaber, *University Hospital & Clinics*  
 John Hawkins, *University Hospital & Clinics*  
 Phyllis Herndon, *University Hospital & Clinics*  
 Jennifer Kaiser, *KBIA Radio*  
 Wanda Kent, *Access Office*  
 Alan Ketring, *Research Reactor*  
 Howard Kincaid, *University Hospitals & Clinics*  
 Lori Lammers, *Sponsored Program Administration*  
 Mark Lehman, *MU News Bureau*  
 David Maupin, *Agricultural Economics*  
 Julie McKay, *University Concert Series*

Joe Montgomery, *Ellis Fischel Cancer Center*  
 Thomas Moran, *Food Science & Human Nutrition*  
 Paul Morris, *Energy Management*  
 LaNita Nichols, *Physiology*  
 Shawna L. Nichols, *Education*  
 Rebecca O'Neal, *Textile & Apparel Management*  
 J. Michael Philips, *University Hospitals & Clinics*  
 Mary I. Porter, *Anthropology*  
 Mary Ellen Roth, *Biochemistry*  
 Nancy Schultz, *International Admissions*  
 Maydell Senn, *Library & Informational Sciences*  
 Deborah Strodman, *Classical Studies*  
 Thelma Sweezer, *Ellis Fischel Cancer Center*  
 Vicki Tolbert, *Ellis Fischel Cancer Center*  
 Lisa Toler, *Campus Writing Program*  
 Lois Tolson, *Engineering*  
 Michele Towns, *Planning Design & Construction*  
 John Vandelicht, *Campus Facilities*  
 Dawn Wallace, *Campus Dining Services*  
 Patricia White, *Theater*  
 Patricia Willis, *Biological Sciences*  
 Mary A. Wilson, *Geography*  
 Anna Adams-Windom, *Human Resource Services*  
 Dan Wood, *Environmental Health & Safety*



**Administrative/Professional**

**Grace Butler**  
 Senior Academic Adviser  
 College of Business & Public Administration

Grace Butler likes and respects the students she works with. That's probably the main reason she's an effective academic adviser after 16 years on the job.

"These are good students, the best students on campus," Butler says of the 200 freshman and sophomore prebusiness students and the 230 junior and senior BPA students she advises. "They are highly motivated and excited about entering a highly respected program. I really enjoy working with them."

Butler's advisees and co-workers hold her in equally high regard.

"Grace is more than an adviser to her students, she's a friend, a second mother and a counselor to her advisees," says co-worker Karen Staggs. And they are more than just students to Grace, they are human beings with feelings and problems who are a long way from home."

Butler says more women are going into accountancy now than when she started in 1979. At first, she was working mostly with male students but sometime during the mid '80s women caught up. Now, she says fully half of all the students she advises are female. "Accountancy is a fine job for a woman because we're so good at it," Butler says.

An active member of the National Academic Advising Association and a member of its national board for two years, Butler was a driving force in the birth of the Missouri Academic Advising Association in 1992. In little more than two years, the state group has grown to include some 130 members from every academic institution in the state. She is actively involved in planning the organization's annual conferences and, as one colleague notes, "always sees to it that MU has far and away the best representation of any school at the state and regional meetings."

Butler was a founder of Mizzou's Advisers Forum, which started with three to five members in the mid '80s and numbers about 75 now. She counts her work in these professional organizations as among her proudest achievements.

"Grace is Grace," one co-worker says of Butler. "There is no pretense. Her energy and enthusiasm are unlimited and act as a catalyst to others for whatever project or program she's part of. She has devoted herself to the University mission and the cause of students throughout her career at MU. I can think of no better way to recognize such an outstanding staff member than through this award."

Other finalists for this award were: Alan J. Marshall, microcomputer specialist, Biological Sciences; Gail Raskin, senior research specialist, Psychology; Marie Sloan, administrative associate II, History.

Photos by Rob Hill





**Secretarial/Clerical**

**Lea Mountjoy  
Administrative Assistant  
Psychological Services Clinic**

When a record, 20-inch snowfall paralyzed Columbia this January, Lea Mountjoy was the only staff member who managed to struggle through snow drifts to get into work at MU's Psychological Services Clinic.

She sees nothing unusual in making that extra effort. Someone needed to be there to answer phone calls and save people from making a wasted trip to the clinic, she explains. "We had clients scheduled, and some of them walk to their appointments. That's just treating other people the way you would want to be treated."

Her co-workers say Mountjoy's dedication to her work is standard operating procedure. Mountjoy, administrative assistant in the Psychological Services Clinic, is the Staff Recognition Award winner in the secretarial/clerk category.

The clinic provides psychological counseling to members of the University and Columbia communities as part of a doctoral training program. Mountjoy's job calls for her to supervise support staff and students, handle financial and other administrative duties such as billing, client scheduling and orchestrating the hundreds of details that keep the clinic humming.

"Lea has the uncanny ability to work in close quarters with stressed clients and staff, with competing demands upon her energy and time, and still maintain a pleasant and professional demeanor," a co-worker says.

But Mountjoy also touches people's lives and makes a difference. Colleagues say she genuinely cares for others. On many occasions, her composure and compassion have helped clients through a crisis. "It does require a certain skill and sensitivity to deal with somebody who is hurting, but given the same set of circumstances it's a situation that any of us might face," she says.

Finalists in the secretarial/clerk category are: Linda C. Allen, administrative assistant with the Department of Management; Terry Gatewood, senior secretary with Consumer and Family Economics Extension; and Judy Renner, administrative assistant with Health Services Management.



**Crafts/Maintenance**

**Keith Ziegelbein  
Refrigeration Specialist  
Planning, Design & Construction**

Keith Ziegelbein has saved more than a few MU researchers from disaster. A refrigeration specialist, he maintains more than 1,000 refrigeration units on campus, many housing invaluable research material.

James Schoelz, associate professor of plant pathology, can tell you about it. Ziegelbein takes care of his four growth chambers, expensive units that simulate natural growing conditions in a laboratory setting. A microcomputer on one of Schoelz's chambers broke down last year. "Keith could have simply ordered the part and billed me," Schoelz recalls. "Instead, he offered to install mechanical timers in the growth chamber, an option that is not offered by the manufacturer and for which there are no instructions. Keith essentially built his own growth chamber with parts that are commonly available in town using mechanical timers that are less expensive and ultimately more reliable than the microcomputers."

So successful was Ziegelbein's handiwork, other researchers in the Department of Biochemistry have asked him to do the same for them. He takes on these extra projects for two simple reasons: he enjoys finding answers to problems and he wants to be the best there is at his job.

"It's rewarding when your colleagues are looking for information and you are the person they come to. That makes you feel good."

At Mizzou, Ziegelbein is the person they come to when the question is a specialized refrigeration issue. His "clients" include the medical school, University Printing Services, Campus Computing, the Dalton Cardiovascular Research Center, the Animal Science Research Center, Mizzou Telecommunications and others.

Ziegelbein is conscious of environmental issues and voluntarily got involved in an Environmental Protection Agency program that recycles used refrigeration chemicals.

To keep track of his many responsibilities, Ziegelbein developed and computerized a scheduled maintenance program. This way, he says, "I know what equipment needs attention on a regular, up-to-date cycle."

Ziegelbein credits his supervisors — Sam Sullivan and Greg Watts — for giving him freedom to do his job. They support his EPA work and allowed him time to develop the computerized maintenance program. They enable him to attend conferences that help him to stay on top of his trade.

"You can't do these kinds of things without supervisors who encourage you," Ziegelbein says.

Other finalists were in the crafts/maintenance category were: Robert L. Jones, animal caretaker, Veterinary Medicine and Surgery; Bill Rybak, building trades specialist, Ellis Engineering; Gary Wilson, custodian, Alumni Activities.



**Technical/Paraprofessional**

**Randall C. Wright  
Chief Weathercaster  
KOMU-TV**

Randy Wright is rarely out of the public eye. People all over mid-Missouri count on his nightly weather forecasts on KOMU-TV to decide whether to pull out their heavy coats or bring an umbrella along to work the next day. Each year he puts in long hours as a volunteer anchor for charity events like the Children's Miracle Network telethon and the Jerry Lewis Telethon for muscular dystrophy.

"I honestly feel I should get involved in the the community and do as much as I can. I enjoy it. It's fun and I get great feedback," Wright says. Wright is the Staff Recognition Award winner in the technical/paraprofessional category.

"Randy sparks excitement wherever I have observed him in the community," says one colleague. "His positive, cooperative attitude is contagious to others. He relates to all ages and receives their respect and admiration."

Not as many people are as aware of his other less-public contributions to the local quality of life. One of Wright's favorite projects is KEWP, a student-run radio and television lab at Hickman High School. When the low-power radio station went on the air last month, it was the culmination of years of effort and planning by Wright and others.

He worked with local businesses that donated seed money to get the station up and running. In his spare time, Wright works with the Hickman students who broadcast live six or more hours a day. "This is an opportunity to tell some of the positive stories that are happening in local schools," he says.

One local educator says Wright is an "exemplary ambassador" for the University. "Randy is an exceptional role model for the youth in our community," she says. "He exemplifies professionalism for our students as he has facilitated the birth of KEWP."

Wright says the staff award really should be shared with his co-workers at the University owned television station, where an emphasis on community involvement is the norm. "I'm just one of a crowd," he says.

Finalists in the technical/paraprofessional category are Douglas J. Bennett, surgical technologist with Surgical Services at University Hospital and Clinics; Jeweetta Head, staff nurse III with the Women's Health Care Unit at University Hospital and Clinics; and Mary E. Tharp, senior licensed practical nurse at the Student Health Center.

**SERVICE AWARD RECIPIENTS**

Continued from Page 7.

Linda Kay Friedrich, *Endoscopy Center*  
 Judy A. Fry, *Internal Medicine*  
 Randall J. Fry, *Ambulance Service*  
 Tod L. Fye, *Ellis ICU/PACU*  
 Billy Ray Gallup, *Building Services*  
 Irene K. Ganjam, *Veterinary Diagnostic Laboratory*  
 Deborah Gastineau, *Family Practice Clinic*  
 Sara Emanu Geletta, *Ellis Surgery*  
 Todd Gentry, *Energy Management*  
 Claudia S. Gier, *Neurosurgical Unit*  
 Deborah Gill, *Ellis Outpatient Clinics*  
 Xiaofen Gong, *Associate Director Heart Center & General Admissions*  
 Gregory L. Graves, *Building Services*  
 Donald R. Greening, *Research Support Services*  
 Gretchen Anne Gregory, *Surgical Services*  
 Mary G. Grubb, *Ellis Operating Room*  
 Ryan E. Grueber, *Respiratory Care Services*  
 Crispin J. Gunier, *Telecommunications*  
 Lucero S. Hackley, *Agricultural Economics*  
 Sue E. Halaweh, *Library*  
 Susan L. Hamilton, *Parking & Transportation Services*  
 Denis C. Hancock Jr., *Agronomy*  
 Kenneth D. Harbour, *Printing Services*  
 Lisa Hardy, *Nursing NICU*  
 Diane L. Hargrave, *Missouri Kidney Program*  
 Matthew C. Harline, *Veterinary Biomedical Sciences*  
 Cindy L. Harper, *School of Natural Resources*  
 Paul R. Harris, *Emergency Suite*  
 Norma Kay Harrison, *Library*  
 Phyllis J. Harter, *Surgical Services*  
 Christina G. Hartnady, *Pathology*  
 Jennifer S. Haubner, *Ellis Medicine*  
 Jill E. Hay, *Sterile Processing*  
 Vicki L. Hayworth, *Surgery*  
 Alma R. Hazen, *Printing Services*  
 Karen Marie Heaston, *Institutional Research, Budget & Planning*  
 Lynne Marie Hedrick, *Medical Records*  
 Geri Lee Hegstad, *Veterinary Diagnostic Laboratory*  
 Charles R. Heidel, *Patient Accounts*  
 Herbert Hein Jr., *Facilities Design & Development*  
 Paul A. Hemphill, *Residential Life*  
 Stephen Hency, *Plan, Design & Construction*  
 Carol J. Hendrickson, *Dean of Library & Informational Science*  
 Jeff Henegar, *Internal Medicine*  
 Staci L. Henks, *Personnel*  
 John R. Hennagir, *Pharmacy*  
 Melinda L. Henson, *Music*  
 Laura J. Hertel, *School of Natural Resources*

Shauna D. Hess, *Women's Health Care Unit*  
 Amy K. Hestir, *University Physicians Plan Administration*  
 Donna Hickman, *Internal Medicine*  
 Timothy L. Hickman, *Multipurpose Auditorium*  
 Kimberly A. Hicks, *Psychology*  
 William Frank High, *Ellis Laboratory*  
 Sandra Hild, *Burn Unit*  
 Mary Hill, *Medical Records*  
 Genola B. Hodge, *Pathology*  
 Lloyd C. Hodge, *Radiology*  
 Richard J. Hofen, *Agronomy*  
 Kelley S. Holm, *Adolescent Unit*  
 Robin D. Holsinger, *Respiratory Care Services*  
 Tami Caye Hoskins, *Surgery*  
 Paula Houk, *Nutrition & Food Services*  
 Paula Marie Houston, *Vice Provost Extension*  
 Lucinda A. Hudlow, *Parking & Transportation Services*  
 Gina C. Hudnut, *Music*  
 Hubert A. Huff, *Dean of Education*  
 Pamela Huffstutter, *University Physicians Ambulatory Care*  
 Lola Ruth Humphrey, *Gm Office/Records*  
 Patricia Ann Hunt, *Registrar & Director of Admissions*  
 Latoyia Yvonne Hyler, *Nursing NICU*  
 Hon Kim In, *Pathology*  
 Teresa Ingraham, *Building Services*  
 Henry Sterling James, *Campus Computing Facilities*  
 Marta Jeney, *Personnel*  
 Linda Marie Jenkins, *Environmental Health & Safety*  
 Michele M. Jensen, *Residential Life*  
 Erma R. Johnmeyer, *Burn Unit*  
 Danita L. Johnson, *Human Resource Services (MU)*  
 Ricky Jones, *Campus Dining*  
 Robert Jones, *Intercollegiate Athletics*  
 Sena L. Jones, *Residential Life*  
 Lauren N. Jordan, *Linen Services*  
 Linda Lee Kaiser, *Dean of Education*  
 Carmilla Kauzlarich, *Ellis Medicine*  
 Dana J. Kelly, *Campus Mail Service Facility*  
 Gail C. Kelly, *Student Services*  
 Jill G. Kelly, *Obstetrics & Gynecology*  
 Cynthia Ann Kemper, *Pathology*  
 Robert E. Kent II, *Campus Dining*  
 Mahtaj Khamneian, *Campus Computing Services*  
 Reginald A. Kinsey, *Police*  
 Lea Anne Kinstler, *Ellis Operating Room*  
 Harley Kirchner, *Maintenance & Grounds*  
 Paul T. Kliethermes, *Practical Arts & Vocational-Technical Education*  
 Jamie E. Kochert, *Internal Medicine*  
 Candace E. Koonse, *University Stores*  
 Linda R. Krantz, *Neurosurgical Unit*  
 Patricia Rose Kroll, *Registrar & Director of Admissions*  
 Kiratadas Kutikkad, *Research Reactor*  
 Connie L. G. Labarbera, *Biological Sciences*

Mary A. Lammers, *Nursing NICU*  
 Trudy Langley, *University Physicians Patient Accounting*  
 Maxine Langlotz, *Building Services*  
 Geoffrey Michael Lanham, *Vice Provost Extension*  
 Stephen Lankheit, *Agronomy*  
 Lee Anne Larrick, *Intercollegiate Athletics*  
 Rosetta Lee, *Nutrition & Food Services*  
 Sharon Y. Lee, *Rusk Rehabilitation*  
 David L. Lehman, *Cardiology Labs*  
 Jo Ann Leisman, *Surgery ICU*  
 Philip Gerard Leith, *Campus Computing Services*  
 Sara Lynn Leonard, *Thoracic ICU*  
 Cecilia J. Leslie, *Registrar & Director of Admissions*  
 Richard D. Linhardt, *Food Science & Human Nutrition*  
 Carolyn L. Link, *Medical Records*  
 Crystal D. Linneman, *Rusk Communications Disorders*  
 Suzanne C. Lippard, *Library*  
 Marlin T. Logan, *Nutrition & Food Services*  
 Khim Long, *Research Reactor*  
 Diane S. Lonis, *Campus Computing Administration*  
 William Richard Louis, *4 East Medicine*  
 Rita Luntsford, *Internal Medicine*  
 Tracie Lynn Madsen, *Adolescent Unit*  
 Carol Sue Magruder, *Dean of Agriculture*  
 Linda Sue Malinski, *Campus Computing Administration*  
 Julia Prough Marsh, *Student Financial Aid*  
 Bill J. Martin, *Plan, Design & Construction*  
 David Martin, *Campus Computing Administration*  
 Michael S. Martin, *Printing Services*  
 Mary Y. Martinez, *Chemical Engineering*  
 Larry K. Mason, *Nutrition & Food Services*  
 Lila K. Matheny, *Patient Accounts*  
 Mary Frances Maxwell, *Cashier/Payroll/Student Loans*  
 Diane L. McAlpin, *Surgery*  
 Lawrence M. McCollum, *Mechanical & Aerospace Engineering*  
 Mary K. McCoy, *Radiology*  
 Juni L. McCreary, *Security & Parking Services*  
 Kerry Ann McDonald, *Nursing NICU*  
 Michale R. McGuire, *Rusk Rehabilitation W*  
 Julie D. McKay, *Concerts*  
 Charlotte Ann McKenney, *Surgery*  
 Wendy Ann McKinlay, *Accounting*  
 Michael Stanley Merritt, *Nutrition & Food Services*  
 Billie Jean Meyer, *Student Health Center*  
 Steven T. Meyer, *Campus Computing Administration*  
 Sherri Lynn Miller, *Procurement/Materials Management*  
 Cheryl A. Mitchell, *Pathology*  
 Kunigunde Montgomery, *Housekeeping*  
 Robert M. Moody, *Campus Computing Services*  
 Linda Sue Moore, *Women's Health Care Unit*  
 Phyllis A. Moore, *Intercollegiate Athletics*  
 Jeffrey Moran, *Dean of Education*  
 Mark R. Morris, *Plan, Design & Construction*  
 Jeffery P. Mosley, *Nutrition & Food Services*

**CLASSROOMS OF THE FUTURE**

**OPEN FORUM FOR FACULTY & STUDENTS**

Multi-media in the classroom, creating environments conducive to learning and much, much more will be discussed at an open forum hosted by the MU Planning Committee for Facilities and Grounds on Monday April 10 at 3:40PM at the General Services Building in Room 25. Come and speak your mind about classrooms of the future!



A public service announcement by Campus Facilities

**MU Recreational Services' SIXTH ANNUAL Recreational Sports Camp**

For: Boys & Girls, 7 - 12 years old  
 Cost: \$140

Where: Student Recreation Center

Time: 8:45 a.m. - 4:00 p.m. Monday - Friday  
 (Adult-Supervised Play: 7:15 - 8:45 a.m. and/or 4:00 - 5:15 p.m. - No Extra Charge)

**Dates (4 Sessions)**

Session I - June 12 - June 23  
 Session II - June 26 - July 7 (No Camp July 4)  
 Session III - July 10 - July 21  
 Session IV - July 24 - August 4

Registration Deadline: Friday, May 12

For More Information: Marshall or Diane, 882-2066

**Where Everyone's a Winner**

MU Recreational Services 320 SRC 882-2066 Student Affairs

Paul James Muren, *Research Reactor*  
Virginia L. Murphy, *5 East Surgery*  
Charity R. Muzorewa, *Pediatrics ICU*  
Arnold Joe Myrick, *Fertilizer Control*  
Philip K. Nacy, *Plant Pathology*  
Dana L. Naylor, *Dean of Education*  
Donna S. Neal, *Medicine Clinic*  
Debra A. Neef, *Internal Medicine*  
Karen Neese, *Student Health Center*  
Hector Neff, *Research Reactor*  
Ruby Bell Neighardt, *University Stores*  
Alisa C. Nettles-Strong, *Veterinary Diagnostic Laboratory*  
Earlene N. Newcomb, *Information Services*  
Lanita A. Nichols, *Physiology*  
Gwyn R. Nickerson, *Pharmacy*  
Sonya Nistendirk, *Dean of Education*  
Stanley Noland, *Building Services*  
Lisa Noordsy, *Ellis Therapies*  
Carol Barbara Oliver, *Infection Control*  
Michelle A. Olson, *Campus Dining*  
Rebecca Ann Oneal, *Textile & Apparel Management*  
Tracy A. Oster, *5 West Surgery*  
Gary L. Ostercamp, *Pastoral Care*  
Norma L. Palmer, *Child Health Clinic*  
Edward M. Palmquist, *Multipurpose Auditorium*  
Sandy A. Parkinson, *Library*  
Tammy Parks, *Director of Campus Facilities*  
R. Eileen Patton, *Helicopter Service*  
Mark W. Perrigo, *Maintenance & Grounds*  
Jeffrey Craswell Peters, *Veterinary Diagnostic Laboratory*  
Samuel Lloyd Peterson, *Sponsored Program Administration*  
June Petit, *Ellis Housekeeping/Linen*  
Sandra D. Petty, *Residential Life*  
Janice L. Pickett, *Vice Provost Extension*  
Stoney D. Pipes, *Residential Life*  
Jennifer Polkow-Haight, *Veterinary Medicine & Surgery*  
Amy L. Power, *Rusk Rehabilitation*  
Susan Raaz, *Student Health Center*  
Russell Cameron Ragar, *Physical Medicine & Rehabilitation*  
Gail L. Raskin, *Psychology*  
Cheryl A. Raven, *Accounting*  
Palmyra S. Rawlings, *Pathology*

Rajasekhar V. Reddy, *Veterinary Biomedical Sciences*  
Dana Lynn Reeder, *Business Services*  
Joe S. Reeder, *Facilities Design & Development*  
Le Ann Reeder, *Pediatrics*  
Lisa Reynolds, *Burn Unit*  
James J. Rhyne, *Research Reactor*  
Howard Ray Rice, *Student Services*  
Ruth Ann Rice, *Nutrition & Food Services*  
Linda P. Robb, *Ellis Radiation Therapy*  
Terry L. Robb, *Telecommunications*  
Eddie Dean Roberts, *Ellis Engineering*  
Teresa Roberts, *Internal Medicine*  
Verna K. Roberts, *Multipurpose Auditorium*  
Kay Robertson, *Associate Director Children's Hospital, Women's Services*  
Beverly Robinson, *Surgery Clinic*  
Clare Robinson, *Internal Medicine*  
Charles T. Rolfes, *Surgery*  
James L. Ronald, *Multipurpose Arthritis Center*  
Linda M. Rowland, *Dalton Cardiovascular Research Center*  
Noel Christopher Rummens, *University Stores*  
Edna Joyce Rutledge, *Housekeeping*  
Suzanne M. Rutter, *Medique Gift Shop*  
Clare L. Sallee, *Editorial Department*  
Susan King Salzer, *Publications & Alumni Communication*  
Matthew R. Sanford, *Research Reactor*  
Ragan R. Sappington, *Dean of Education*  
Karen L. Schams, *Neurophysiology*  
Chris Schenewerk, *University Physicians Patient Accounting*  
Peter Schibler, *Dean of Education*  
Melissa D. Schleeter, *Emergency Suite*  
Jacqueline Schneider, *Vice Provost Extension*  
Margaret Ann Schneider, *Rusk Outpatient Rehabilitation*  
Cathy I. Schreiber, *5 East Surgery*  
John D. Schueler, *Medical Informatics*  
Susan M. Schuermann, *Library*  
Kevin Schulte, *Plan, Design & Construction*  
Letha E. Scott, *Admissions*  
Teresa L. Seidel, *University Stores*  
Mary J. Sessler, *Medical ICU*  
Sherry S. Shanks, *4 West Medicine*

Norma Shaon, *University Physicians Ambulatory Care*  
Kathy Leann Sharp, *Advertising*  
Christopher Patrick, *Veterinary Medicine & Surgery*  
Stephen E. Sheehan, *Housekeeping*  
Kenneth W. Simms, *Patient Accounts*  
Judith Lynn Sims, *Practical Arts & Vocational-Technical Education*  
Karl Skala, *Internal Medicine*  
Jacklyn Russetta Smith, *5 East Surgery*  
Jennifer Sue Smith, *Information Science*  
Kevin M. Smith, *Residential Life*  
Douglas P. Sohn, *Associate Director Heart Center & General Admissions*  
Kenneth R. Souder, *Ambulance Service*  
Cynthia L. Spano, *Neurosurgical Unit*  
Cheryl Spencer, *Nursing NICU*  
Laurie E. Spurling, *Patient Accounts*  
Robin A. Spurling, *Police*  
Dianna S. Staab, *Surgery*  
Sherrlynn Ann Staab, *Nursing Staff Education*  
Patricia A. Staley, *Ellis Surgery*  
Rory John Stegeman, *TV Station*  
Donald Ray Steiner, *Educational Resources Group*  
Patricia Lynn Stickney, *Medicine Clinic*  
Susan J. Stickney, *Education & Counsel Psychology*  
Jennifer M. Stoecklein, *Public Relations*  
Lina Stropus, *Energy Management*  
Katie J. Summerfield, *Ellis Medicine*  
Catherine F. Sutter, *Telecommunications*  
Peter Tallerico, *Nursing NICU*  
Lorrie L. Tallman, *Associate Director Children's Hospital, Women's Services*  
Sandie L. Tapia, *Emergency Suite*  
Joan Tapp, *Surgery Clinic*  
Lori H. Tarwater, *Campus Computing Administration*  
Manuel Tatayon, *Police*  
Deborah Joan Tate, *Veterinary Medicine & Surgery*  
James Dale Taunton, *Southwest Center*  
Donna K. Taylor-Stearns, *Dalton Cardiovascular Research Center*  
Lisa Mae Taylor, *Rusk Brain Injury Rehabilitation*  
Janice D. Thompson, *Nutrition & Food Services*  
John E. Thompson, *Ellis ICU/PACU*

Please turn to Page 12.

# The simplest thing about a home should be the loan.

## Attn: Members

### Attend a NO-COST Seminar:

MIZZOU CREDIT UNION and the PLAN AMERICA CENTER located at your credit union invite you to attend a NO COST Seminar on home financing opportunities hosted by Melanie Weable, MIZZOU CREDIT UNION Real Estate Loan Officer, and Larry Fredette, PLAN AMERICA Representative.

Discussion on the following topics:

- New down payment requirements
- Take the mystery out of closing costs
- How much can you afford
- Protect your investment
- Question & Answer session

*AN INVITATION*  
Mizzou Credit Union  
1st & Broadway  
Columbia, MO 65203  
314-874-1477 or 800-451-1477  
THURS., APRIL 20, 1995  
6:00-7:00 PM  
R.S.V.P.  
*REFRESHMENTS WILL BE SERVED.*



### Home Financing Opportunities



Please return by 4-17-95 to reserve your seat.

Name \_\_\_\_\_

Daytime phone \_\_\_\_\_

Evening phone \_\_\_\_\_

Number of people attending \_\_\_\_\_

Mail to: Larry Fredette  
c/o - Mizzou Credit Union  
P.O. Box 1795  
Columbia, MO 65205-1795



MIZZOU CREDIT UNION

Mon.-Thurs. 7:30 am to 5:30 pm  
Friday 7:30 am to 6 pm  
Saturday 9 am to 12:30 pm



1st & Broadway • P.O. Box 1795 • Columbia, Mo. • 65205-1795

Phone: 874-1477 or 1-800-451-1477 Fax: 874-1300

MU Faculty, Staff and families are eligible to join. Call for membership info today!

## Service Award Recipients

Continued from Page 11.

Karen Ann Thompson, *Residential Life*  
 Kevin Mark Thompson, *Human Environmental Sciences*  
 Victoria M. Thorp, *English*  
 Doris M. Till, *Business Services*  
 Howard J. Timms, *Plant Engineering*  
 Betty L. Tiziani, *University Hospital & Clinics Hospital Operations Director*  
 Lisa C. Toler, *Campus Writing Program*  
 Kathleen Ann Tonnies, *Obstetrics & Gynecology Services*  
 Karla Rena Trimble, *Patient Accounts*  
 June Turban, *Communicative Disorders*  
 Sharon Turner, *Ophthalmology Clinic*  
 Immaculee M. Uwayezu, *Pathology*  
 Robert E. Van Ark, *Energy Management*  
 Elizabeth M. Van Mil, *Vice Provost/Dean of Graduate School*  
 Teresa Ann Vance, *Admissions*  
 Donna J. Vaught, *Dean of Agriculture*  
 Mary Rhonda Victor, *School of Law*  
 Melicia B. Villahermosa, *Dean of Arts & Science*  
 Carolyn Villarruel, *Residential Life*  
 Deneal A. Voss, *Ellis Administrative Services*  
 Howard Vernon Wade, *Telecommunications*  
 Jill Walters, *Perinatal Outreach*  
 Rick R. Ware, *Surgical Services*  
 James Kent Waters, *Analytical Services*  
 Tina J. Watson, *Clinical Dietetics*  
 Brenda Kaye Webster, *Patient Accounts*  
 Carol Lynn Wesbury, *Sterile Processing*  
 Brenda Sue Weston, *Patient Accounts*  
 Shirley L. Whaley, *Campus Dining*  
 Maureen Wheeler, *Student Life*  
 Paul C. Whitacre, *Vice Provost Extension*  
 Cuqrita Whitley, *Campus Dining*  
 Linda M. Wilcoxson, *Educational & Counseling Psychology*  
 Darleen Hilda Williams, *Vice Provost Extension*

## Retirees

### 40 YEARS

Russell L. Smith, *Animal Science*

### 39 YEARS

Donnie L. Wren, *Printing Services*

### 31 TO 34 YEARS

Myrna M. Bruning, *Hospital Executive Administration*  
 Jack D. Winn, *Athletic Department*

### 26 TO 30 YEARS

Virginia V. Clark, *Thompson Farm*  
 Philip K. Lee, *Environmental Health & Safety*  
 Jerry D. Lusby, *Printing Services*  
 Wanda A. Reeves, *Practical Arts & Vocational-Technical Education*

### 21 TO 25 YEARS

Maggie L. Crane, *Fertilizer Control*  
 Idella E. Crews, *Campus Dining*  
 William J. Oser Jr., *Hospital Plant Engineering*

### 16 TO 20 YEARS

Ella M. Armstrong, *Multipurpose Building*

Robert H. Wilmsmeyer, *Entomology*  
 Mary Beth Wilson, *Medical Records*  
 Ryan Bart Wilson, *Perinatal Unit*  
 Jennifer Winn, *Veterinary Biomedical Sciences*  
 Susan L. Wise, *Child Health*  
 Nancy J. Wood, *University Physicians Patient Accounting*  
 Jacob W. Yagel, *Forage Systems Research Center*

Barbara J. Cantrell, *Green Meadows Clinic*  
 Rosemary Crane, *Biochemistry*  
 Jeannette Crawford, *Child Health*  
 Shirley J. Marshall, *Human Development & Family Studies*  
 I. Corinne Robertson, *External Affairs*  
 William E. Robinson Jr., *Campus Computing Facility*  
 Betty Jean Sapp, *Payroll/Student Loans*  
 Phyllis A. Ward, *Special Degrees Program*

### 11 TO 15 YEARS

Mariann Holstein, *Dean of Journalism*  
 Rose Mary Langland, *Health Related Professions*

### 5 TO 10 YEARS

Katheryn A. Berck, *Dean of Graduate School*  
 Anna L. Brown, *Hospital Housekeeping*  
 Marilyn W. Buchner, *Hospital Personnel*  
 Joel D. Chandler Jr., *Development*  
 Amy C. Christianson, *Food Science & Human Nutrition*  
 Boyd E. Martin, *Maintenance & Grounds*  
 Russell E. Shepard, *Building Services*  
 Lewis E. Smith, *Telecommunications*  
 Perry John Sullivan, *Campus Facilities*  
 Clyde Thornton, *Hospital Facilities Design & Development*  
 Carl T. Vinson, *Campus Dining*

Xiu Ying Yang, *Biochemistry (Medicine)*  
 Keith Virgil Yarwood, *TV Station*  
 Dana E. Yates, *Human Resource Services (MU)*  
 Kathleen Yates, *Cardiology Labs*  
 Jian Ping Zhang, *Biochemistry (Medicine)*  
 Keith A. Ziegelbein, *Plan, Design & Construction*  
 Randall L. Zimmer, *Sameday Surgery Center*

## Campus Computing

# Short Courses

The following non-credit short courses are free of charge and open to MU faculty, staff and graduate students unless otherwise noted. Participants may be enrolled in no more than two courses at one time. Registration is required and is done on a first-come, first-served basis. To enroll, please call 882-2000. NOTE: When an ID is required for a class, participants should obtain the ID prior to registering for that class (call the Help Desk at 882-5000 for ID information). Additional courses will be advertised in future issues of the *Mizzou Weekly*.

### CC:MAIL FOR DOS AND WINDOWS (NETWORK-BASED)

2: APRIL 10

cc:Mail for DOS: cc:Mail training for the DOS and Windows platforms is available through a network-based software program. Interested users can register for a hands-on, self-paced tutorial which they can access from their own computers. Topics covered include starting cc:Mail; reading a note; reading bulletin boards; addressing and sending messages; using the cc:Mail text editor; attaching items; importing text; using the spell checker and graphics editor; replying to and forwarding messages; and archiving and printing messages. A password will be issued to participants which gives them access to this self-paced tutorial for one (1) week from the start date. Prerequisite(s): A cc:Mail ID is required prior to registering for the class.

### INTRODUCTION TO MICROSOFT WORD 6.0

3: APRIL 18 (TUESDAY), 9:00 AM - NOON

Participants will learn basic functions such as creating, saving, renaming and relocating documents, entering and

editing text (cut, copy and paste), formatting text (margins, tabs, line spacing, page breaks, columns and tables), choosing font options and creating headers, footers and footnotes. Other topics include the spell-check feature, finding and changing text, and inserting graphics. A question and answer session will be held at the end of class. Prerequisite(s): Foundation of Computers course or basic experience with the Macintosh or Windows platform.

### INTRODUCTION TO MICROSOFT EXCEL 5.0

2: APRIL 12 (WEDNESDAY), 1:30 - 4:30 PM

A hands-on class in which participants will open, save and retrieve a spreadsheet workbook, learn the meanings of grid addresses, rows, columns, and learn how to navigate the cell grid and distinguish cells, sheets and workbooks. Participants will also enter data into a workbook, build basic formulas, manage data, create a chart and learn to customize the appearance of their workbook. The print and help facilities will also be discussed. Prerequisite(s): Foundation of Computers course or basic experience with the Macintosh or Windows platform.



### FOCUS ON FACULTY COURSES

#### INTRODUCTION TO ALDUS PERSUASION 3.0 FOR THE MACINTOSH

APRIL 21 (FRIDAY), 1:30 - 4:30 PM

This introductory hands-on workshop will cover how to create a multimedia classroom presentation. Using Aldus Persuasion for the Macintosh, you will create an automated sideshow with Persuasion's outline feature; create and edit a Master Slide; enhance your presentation by importing and editing graphics from Persuasion's clip art library; and have your presentation jump and link to other applications and documents. Please bring an outline of a class or document you would like to transform into a presentation. Prerequisite(s): Basic experience using a Macintosh.

# CALENDAR

Send calendar items in Campus Mail to  
Mizzou Weekly Calendar, 407 Reynolds Center,  
by noon Thursday the week before publication.  
Events are free and open to the public unless otherwise noted.

## Concerts & Plays

### Thursday, April 6

**FINE ARTS SERIES:** The Department of Theater will present *Nobody Doesn't Like Harvey Schwartz*, directed by Rodger Smith, at 8 p.m. in the Corner Playhouse. Cost: \$5 all seats. For more information, call 882-PLAY.

### Friday, April 7

**MUSIC CONFERENCE:** "Jazz and the Germans" conference will be held April 7-9 in Whitmore Recital Hall. The conference will include concerts, discussions and lectures. Cost: \$25 for the conference including all performances, or \$5 per session and separate admission prices for performances. Students are admitted free to all conference sessions. For registration information, call Michael J. Budds at 882-0927.

**JAZZ AND THE GERMANS CONCERTS:** The music of T.J. Anderson will be performed at 4:15 p.m. in Whitmore Recital Hall. Admission is free. MU faculty vocalists will present "An Evening at the Cabaret: Berlin im Licht" at 7 p.m. and again at 9 p.m. in Whitmore Recital Hall. Cost: \$7. For information, call 882-0927.

**FINE ARTS SERIES:** The Department of Theater will present *Nobody Doesn't Like Harvey Schwartz*, directed by Rodger Smith, at 8 p.m. in the Corner Playhouse. Cost: \$5 all seats. For more information, call 882-PLAY.

### Saturday, April 8

**JAZZ AND THE GERMANS CONCERTS:** Excerpts from Krenek's jazz opera "Jonny spielt auf" will be performed at 1:15 p.m. in Whitmore Recital Hall. University Choral Union and University Philharmonic will perform at 8 p.m. in Jesse Auditorium. Cost: \$10. For information, call 882-0927.

**CONCERT:** Hank Williams Jr. and Aaron Tippin will perform at 8 p.m. at the Hearnes Center. Cost: \$25.50 and \$19.50. For ticket information, call 1-800-CAT-PAWS.

**FINE ARTS SERIES:** The Department of Theater will present *Nobody Doesn't Like Harvey Schwartz*, directed by Rodger Smith, at 8 p.m. in the Corner Playhouse. Cost: \$5 all seats. For more information, call 882-PLAY.

### Sunday, April 9

**FINE ARTS SERIES:** The Department of Theater will present *Nobody Doesn't Like Harvey Schwartz*, directed by Rodger Smith, at 2 p.m. in the Corner Playhouse. Cost: \$5 all seats. For more information, call 882-PLAY.

**JAZZ AND THE GERMANS CONCERT:** Harold Mabern and the Either/Orchestra will perform at 3 p.m. in Whitmore Recital Hall. Cost: \$15. For information, call 882-0927.

### Monday, April 10

**STUDENT RECITAL SERIES:** Joe Voga, tuba, will perform at 7 p.m. in Whitmore Recital Hall. For information, call 882-2604.

### Tuesday, April 11

**STUDENT RECITAL SERIES:** Piano Area Recital will be held at 2:40 p.m. in Whitmore Recital Hall. For information, call 882-2604.

**CONCERT:** Missouri Quintet and Buder Woodwind Quintet will perform at 8 p.m. in Whitmore Recital Hall. For information, call 882-2604.

### Wednesday, April 12

**CONCERT:** Buder Brass Quintet will perform at 8 p.m. in Whitmore Recital Hall. For information, call 882-2604.

**CONCERT:** Band Conductors' Recital will be held at 8:30 p.m. in Whitmore Recital Hall. For information, call 882-2604.

## Conferences

### Saturday, April 8

**INFERTILITY CONFERENCE:** "Waiting, Hoping, Coping... the Infertility Experience" will be offered from 8:15 a.m.-4 p.m. at the Holiday Inn Executive Center. Cost: \$15, including lunch. For information, call 882-7199.

### Tuesday, April 11

**NURSING CONFERENCE:** "Issues in Trauma Nursing" will be offered from 7:25 a.m.-4:15 p.m. at Ramada Inn. Cost: \$129. For registration information, call 882-0215.

### Wednesday, April 12

**NURSING CONFERENCE:** "The Role of Nurses in Managed Care" will be offered from 7:45 a.m.-noon at the Holiday Inn East-Holidome. For cost and registration information, call 882-0215.

### Friday, April 14

**CONSERVATION CONFERENCE:** "The Conservation Reserve Program: What Comes Next?" will be offered from 9 a.m.-5 p.m. at the Holiday Inn Executive Center. This conference is sponsored by the Missouri Department of Natural Resources' Soil and Water Conservation Program and the University of Missouri's Food and Agricultural Policy Research Institute. Attendance is free but advanced registration is required for the lunch. For information, call 882-3576.

## Courses

### Thursday, April 6

**CAMPUS COMPUTING COURSES:**

- "Internet Finding Aids" will be offered from 9 a.m.-noon in 266 Heinkel.
- "Introduction to Ricemail" will be offered from 1-4 p.m. in 266 Heinkel.
- "Unix: Data Tools: Grep, Awk, Sort and Others" will be offered from 2:30-3:30 p.m. in 226 Heinkel.
- "Unix: Introduction to Languages: TCSH and PERL" will be offered from 3:40-4:40 p.m. in 226 Heinkel. To enroll, call 882-2000.

### Friday, April 7

**CAMPUS COMPUTING COURSE:** "Unix: X Windows" will be offered from 3:30-4:30 p.m. in 226 Heinkel. To enroll, call 882-2000.

**UNIVERSITY EXTENSION:** "Aldus Freehand Workshop" will be offered April 7 from 7-9 p.m., April 8 from 8 a.m.-5 p.m. and April 9 from noon-4 p.m. in 147 Stanley Hall. For cost and registration information, call 882-3598.

### Monday, April 10

**CAMPUS COMPUTING COURSES:**

- "CC: Mail for DOS and Windows (Network-based)," a self-paced tutorial, will be offered.
- "SAS" will be offered from 2:30-4:30 p.m. April 10-14 in 226 Heinkel. For information and to enroll, call 882-2000.

**ADULT EDUCATION SEMINAR:** "Advanced DOS Commands" will be offered from 6:30-9:30 p.m. April 10 and 12 in Room 5 Career Center. Cost: \$69. For enrollment information, call 882-2603.

**CHILDBIRTH CLASS:** "Beginning Childbirth" will be offered from 7-9 p.m. Mondays through April 24 in the seventh-floor classroom at Ellis Fischel Cancer Center. Cost: \$45. To register, call 882-6973.

### Tuesday, April 11

**HUMAN RESOURCES SERVICES COURSE:** "Presentation Skills" will be offered from 8:30 a.m.-4:30 p.m. in S303 Memorial Union. To enroll, call 882-2603.

**CAMPUS COMPUTING COURSE:** "Introduction to the Internet" will be offered from 9 a.m.-noon in 266 Heinkel. To enroll, call 882-2000.

### ADULT EDUCATION SEMINAR:

"Advanced Windows" will be offered from 6:30-9:30 p.m. April 6 in Room 4 Career Center. Cost: \$69. For enrollment information, call 882-2603.

**CHILDBIRTH CLASS:** "Beginning Childbirth" will be offered from 7-9 p.m. Tuesdays through May 23 in the seventh-floor classroom at Ellis Fischel Cancer Center. Cost: \$45. Breast-feeding session only, \$5. To register, call 882-6973.

### Wednesday, April 12

**CAMPUS COMPUTING COURSES:**

- "Intermediate WordPerfect 6.0 for Windows" will be offered from 9 a.m.-noon in 266 Heinkel.
- "Introduction to Microsoft Excel 5.0" will be offered from 1:30-4:30 p.m. in 266 Heinkel. To enroll, call 882-2000.

### Thursday, April 13

**CAMPUS COMPUTING COURSE:** "Introduction to the Internet" will be offered from 1-4 p.m. in 266 Heinkel. To enroll, call 882-2000.

## Exhibits

**BINGHAM GALLERY:** "The Graduating Senior Show" will be on display through April 7. The gallery, open from 10 a.m.-4 p.m. weekdays, is in the Fine Arts Building.

**BRADY COMMONS GALLERY:** Student Arts Educators Exhibit will be on display April 3. The gallery, located in 203 Brady Commons, is open from 10 a.m.-5 p.m. weekdays.

**LAW LIBRARY:** "Women Making a Difference - in Law" will be on display through April 7. The library, located in Hulston Hall, is open 8 a.m.-10 p.m. Monday-Thursday, 8 a.m.-6 p.m. Friday-Saturday, and 10 a.m.-10 p.m. Sunday.

**MUSEUM OF ANTHROPOLOGY:** The museum, located in Swallow Hall, is open from 9 a.m.-4 p.m. weekdays.

**MUSEUM OF ART AND ARCHAEOLOGY:**

- "Isms and Others in the Twentieth Century III" and "Expressions of Africa:"


Please see CALENDAR on Page 14.

**PENTEL BK70V**  
*Fine Point, Ballpoint Pen*  
writes in

**ELECTRIFYING**  
**"VIOLET" Ink**  
*"Put It In Writing*  
*So Everybody Can See It!"*

**STK #0327**  
**\$4.15/Dozen**

**General Stores:**  
We've Got What You Need.



THE ROVER

by Aphra Behn,  
adapted & directed by Weldon B. Durham

Rhynsburger Theatre

SW Corner of University & Hill Sts.

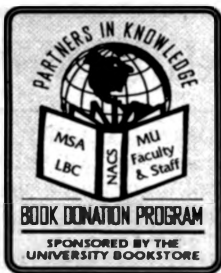
April 20-22/27-29 at 8 pm  
April 30 at 2 pm

Box Office: 882-PLAY

Visa/Mastercard/Discover

THE ROVER - Presented by MU Department of Theatre

Let us ship your unwanted books to universities in need.



Main Level Brady Commons 882-7611

## CALENDAR

Continued from Page 13.

Selections from the Permanent Collection" are on display.

■ Missouri Arts Council Visual Artists' Biennial, featuring the works of Dawn Marie Guernsey, Christopher Ketchie and Zhi Lin, will be on display April 8-June 25. An open reception for this display will be held at the museum at 7 p.m. April 7. The museum, in Pickard Hall, is open from 9 a.m.-5 p.m. Tuesday through Friday and noon-5 p.m. Saturday and Sunday.

## Alzheimer's Disease

The University of Missouri- School of Medicine is conducting a study of new investigational medication for the treatment of Alzheimer's Disease.

Qualifying participants need to meet the following criteria:

- Age-40 years and above
- Mild to moderate Alzheimer's disease
- Living at home with a caregiver
- Have a caregiver who is able to participate in the study
- Be in general good health
- Minimum 1 year history of Alzheimer's Disease Symptoms

If you are interested in participating or would like more information about this study, please call

(314) 882-8040



**ROGERS GALLERY:** The gallery, located in 148 Stanley Hall, is open from 8:00 a.m.-4:00 p.m. weekdays.

### STATE HISTORICAL SOCIETY:

- "Edward S. Curtis: The North American Indian" will be on display in the gallery through April 15.
- "Carl Gentry (1888-1976) Oils and Watercolors" will be on display in the corridor through April 15.
- "Decades: 1885-1965 Editorial Cartoons" also is on display in the corridor. The gallery is open 8:30 a.m.-4 p.m. weekdays. The corridors are open from 8 a.m.-4:30 p.m. weekdays and 9 a.m.-4:30 p.m. Saturday.

**INTERNATIONAL CENTER:** Vojislav D. Stanovic, professor of political science from the University of Belgrade and founder of the Yugoslav Forum for Human Rights and the Forum for Inter-Ethnic Relations, will present "Nation vs. State: War & Peace in the Former Yugoslavia" at 3:40 p.m. in 7 Hulston Hall. A reception will follow.

**NUTRITIONAL SCIENCES RESEARCH SEMINAR:** Elmer M. Price, assistant professor of veterinary biomedical science, will present "Biochemical Studies of Recombinant Cystic Fibrosis Transmembrane Conductance Regulator" at 3:40 p.m. in 103 Animal Science Research Center. Refreshments will be provided at 3:20 p.m.

**PSYCHOLOGY SEMINAR:** Lucia Gilbert, University of Texas-Austin, will present "Emerging Views of Gender and How They Inform Research and Practice" at 3:40 p.m. in 313 Psychology Building.

**WORK-STUDY STUDENT WORKSHOP:** "Multiculturalism and the Workplace" will be offered from 3:40-4:30 p.m. in 220 Noyes Hall. To register, call 884-6217.

**ROMANCE LANGUAGE LECTURE:** Russell George Hamilton Jr., professor of Spanish and Portuguese at Vanderbilt University, will present "Post-Colonial Literature in Portuguese-Speaking Africa" at 4 p.m. in 6 Hulston Hall.

### Friday, April 7

### Friday, April 7

**MSA/GPC FILM:** *One False Move* will be shown at 7 and 9:30 p.m. in Ellis Auditorium. Cost: \$2 in advance, \$2.50 at the door.

### Saturday, April 8

**MSA/GPC FILM:** *One False Move* will be shown at 7 and 9:30 p.m. in Ellis Auditorium. Cost: \$2 in advance, \$2.50 at the door.

### Wednesday, April 12

**MSA/GPC FILM:** *Dark Victory* will be shown at 8 p.m. in Ellis Auditorium. Free with faculty/staff/student I.D., \$1 public.

## Lectures & Seminars

### Thursday, April 6

**SOCIAL SCIENCES BROWN BAG DISCUSSION:** Daryl Hobbs, director of the Office of Social and Economic Data Analysis, and Bill Elder, research associate, will present "OSEDA Data Bases and Electronic Access" at noon in 217 Mumford Hall.

**SINCLAIR SCHOOL OF NURSING 75TH ANNIVERSARY LECTURE:** Linda Aiken, Distinguished Friend of the School of Nursing recipient, will present "Workforce Reform in Nursing and Health Professions" from 1:30-4 p.m. in S255 Sinclair School of Nursing Building. An interdisciplinary panel of respondents will include: Belinda Heimericks, Dan Mueller, Richard Oliver, Harold Williamson and Alice Kuehn. A reception will follow at 4 p.m. For information, call 882-0252.

**ECONOMICS LECTURE:** John J. Siegfried, professor of economics at Vanderbilt University, will present "How Did the Wealthiest People in Australia, Great Britain and the United States Get So Rich?" at 3 p.m. in 211 Middlebush.

### Friday, April 7

**SOCIAL SCIENCES BROWN BAG DISCUSSION:** David J. O'Brien, Valeri Patsiorkovski and Larry D. Dershem will present "Changes in Russian Villages Since 1991: Past, Present and Future Social and Economic Research" at noon in 217 Mumford.

**CARDIOVASCULAR RESEARCH SEMINAR:** Joseph R. Hume, professor of physiology at the University of Nevada, will present "Role of Intracellular Ca<sup>2+</sup> Inhibition of K<sup>+</sup> Channels in Agonist- and Hypoxic-Induced Membrane Depolarization of Vascular Smooth Muscle Cells" at 12:40 p.m. in 133 Dalton Cardiovascular Research Center. For information, call 882-7433.

### SINCLAIR SCHOOL OF NURSING 75TH ANNIVERSARY LECTURE AND BANQUET:

■ Harriet Werley, Honorary Nursing Alumni Award recipient, will present "Pioneering in Nursing Journal Publication: Implications for Growth in Nursing Scholarship and Research" from 1:30-3:45 p.m. in S255 Sinclair School of Nursing Building.

■ Jane E. Hirsch, Alumna of the Year, and Jane E. Bostick, Alumni Achievement Award recipient, will speak on current nursing issues.

■ A reception will be held at from 5:30-7 p.m. at the Reynolds Alumni Center.

■ The Fifth Annual Banquet and Award Presentation will be held from 7-9 p.m. at the Reynolds Alumni Center. For information, call 882-0252.

**MOLECULAR MICROBIOLOGY AND IMMUNOLOGY SEMINAR:** Seyed E. Hasnain of the National Institute of

# FAX SERVICE

Use the Ellis Library Copy Center for all your professional or personal fax needs. We will even contact you when we receive a fax for you.

**Send: \$2.00 + 25¢ a page**

**Receive: \$1.00 and 25¢ a page**

International service available for a slight additional charge.

Sunday.....noon to midnight  
 Mon - Thurs.....7:30 a.m. to midnight  
 Friday.....7:30 a.m. to 11 p.m.  
 Saturday.....9 a.m. to 9 p.m.

**ELLIS LIBRARY COPY CENTER**

Room 115 • Ellis Library • 882-7262

- Racing and/or pounding heartbeat or chest pressure
- Shortness of breath or a sensation of smothering
- Sweating, hot flashes or chills
- Fear of dying or doing something uncontrolled
- Trembling, shaking, numbness or tingling sensations
- Feeling dizzy, unsteady, light-headed or faint
- Nausea or abdominal discomfort

If you suffer from FOUR OR MORE of these symptoms that develop suddenly and reach a peak within 10 minutes, you may suffer from recurrent unexpected

## PANIC ATTACKS

The University of Missouri-Columbia Division of Psychiatry is conducting a study of a new investigational medication for the treatment of panic attacks. If you suffer from panic attacks and are interested in being a study participant

**Please Call (314) 882-0408**



Immunology Aruna Asaf Ali Marg New Delhi, India, will present "Transcription from the Baculovirus Polyhedron Gene Promoter Involved a Host Protein Factor" at 1:40 p.m. in M640 Medical Science Building.

**ART AND ARCHAEOLOGY FORUM:** Susan Krane, curator of modern and contemporary art at Atlanta's High Museum of Art, will present "Thoughts on Contemporary Art" followed by a discussion with the artists in the current Missouri Arts Council Biennial Exhibit; Dawn Marie Guernsey, Christopher Ketchi and Zhi Lin; and past biennial artists, Nate Fors, William Hawk and Marilyn Mahoney at 3:30 p.m. in 106 Pickard Hall.

**ROMANCE LANGUAGES LECTURE:** Christopher Kleinhenz, professor of Italian at the University of Wisconsin-Madison, will present "Text and Image in Dante's Divine Comedy: The Tradition of Inferno 7" at 7 p.m. in 4 Hulston Hall.

**Saturday, April 8**

**WOMEN'S CENTER WORKSHOP:** "Women, Money and the Power of Making Change" will be offered from 10 a.m.-noon in 229 Brady Commons. Registration is required, call 882-6621.

**Sunday, April 9**

**FOLK ARTS LECTURE:** Adolf J. Eichenseer and Erika Eichenseer of Regensburg, Germany, will present "Folk Arts, Folk Music and Dance of Bavaria" at 2 p.m. in 106 Pickard Hall. A reception in the Cast Gallery will follow.

**PEACEWORKS SALON:** Mark Haim of Mid-Missouri Peaceworks will present "Promiscuity, Monogamy, Group Marriage and Other Options: The Social, Spiritual and Political Implications" from 6:30-8 p.m. in the Peace Nook lounge. For information, call 875-0539.

**Monday, April 10**

**FOLK ARTS LECTURES:**  
 ■ Adolf J. Eichenseer of Regensburg, Germany, will present "Cultural Preservation in Bavaria: An Open Air Museum" at 10:40 a.m. in 106 Pickard Hall.  
 ■ Erika Eichenseer of Regensburg, Germany will present "Folk Theater in Northern Bavaria" at 2:40 p.m. in 106 Pickard Hall.

**SOIL AND WATER RESOURCES SEMINAR:** Paula Shannon will present "Riparian Floodplain Soils" from 3:40-4:30 p.m. in 133 Mumford Hall.  
**GEOLOGY COLLOQUIUM:** Paul Hsieh will present "A Multidisciplinary Multiscale Investigation of Fluid Flow and Solute Transport in Fractured Crystalline Rocks: Findings from the Mirror Lake Site, NH" at 3:40 p.m. in 107 Geology Building.

**Tuesday, April 11**

**TELECOMMUNICATIONS:** "Using Telephone Features Effectively" will be offered from 1:30-3:30 in the basement conference room of the Telecom Building. To register, call 882-2177.

**CHEMICAL ENGINEERING SEMINAR:** Quinsong Yu, master's degree candidate, will present "Optical Emission Study on Low Temperature Cascade Arc Plasmas" at 2:40 p.m. in W0015 Engineering Building West.

**BIOLOGICAL SCIENCES SEMINAR:** Winston Bailey of the University of Western Australia will present "Acoustic Communication in Katydid" at 3:40 p.m. in 18 Tucker. Reception will be held at 3:15 p.m. in 111 Tucker.

**Wednesday, April 12**

**ACCESS AWAKENING MONTH SEMINAR:** "Sense and Sensitivity Seminar" will be offered from 9 a.m.-noon in S303 Memorial Union.

**LUNCHTIME CONVERSATIONS ABOUT WRITING:** Jo Ann Vogt, education and social sciences faculty liaison for the Campus Writing Program, will present "Whose Grade is it Anyway?" from 11:45 a.m.-12:45 p.m. in 325 GCB.

**MIDDAY GALLERY TALK:** Julie Youmans, Missouri Performing Traditions coordinator, will present "Playing with

Heart: African-American Quilt Tops" at 12:45 p.m. at the Museum of Art and Archaeology in Pickard Hall.

**Meetings**

**Thursday, April 6**

**STAFF FOR LIFE TOASTMASTERS CLUB:** Group will meet from noon-1 p.m. in the Director's Conference Room, 1W19, University Hospital and Clinics. The meeting theme is "To Dye or Not to Dye." For information, call Lynne Hedrick at 882-4865.

**GENERAL FACULTY MEETING:** Chancellor Charles Kiesler addresses the faculty at 3:40 p.m. in Columns C, D and E of the Reynolds Center. A reception will follow in the Great Room.

**Sunday, April 9**

**NUVOICE:** Group will meet at 1 p.m. in the seventh-floor classroom of Ellis Fischel Cancer Center. For more information, call 882-7373.

**Monday, April 10**

**PLANNING COMMITTEE FOR FACILITIES AND GROUNDS:** Group will meet at 3:40 p.m. in 25 General Services Building. Bob Swanson will chair a public hearing "Our Classrooms of the Future."

**Wednesday, April 12**

**PATIENT AND FAMILY SUPPORT GROUP** will meet from 1-2 p.m. in the fourth-floor lounge of Ellis Fischel Cancer Center. For more information, call 882-7373.

Please see CALENDAR on Page 16.

Attention! Class is about to begin. Introducing the new Power

**MAC**

6100\*. The first computer to run both IBM® and Macintosh® programs. It's

**THE**

computer. It's neat. You need one. Register to win one FREE at Mac Tour '95. Come try it out at the new Engineering Building on April 12 and Middlebush on April 13, both days from 10am-2pm. Feel free to

**GRADE**

us without a curve—Mac can take it.



Come hackers, come all.

IBM is a registered trademark of International Business Machines Corp. Product prices, product availability and sales tax may vary. ©1995 Apple Computer, Inc. All rights reserved. Apple, the Apple logo and Macintosh are all registered trademarks of Apple Computer, Inc. Power Macintosh and Mac are all trademarks of Apple Computer, Inc.

**"Waiting, hoping, coping... the infertility experience"**

**Infertility Conference**  
 8:15 a.m. - 4 p.m., Saturday, April 8  
 Holiday Inn Executive Center  
 Columbia, Missouri  
 \$15 per person (includes lunch)

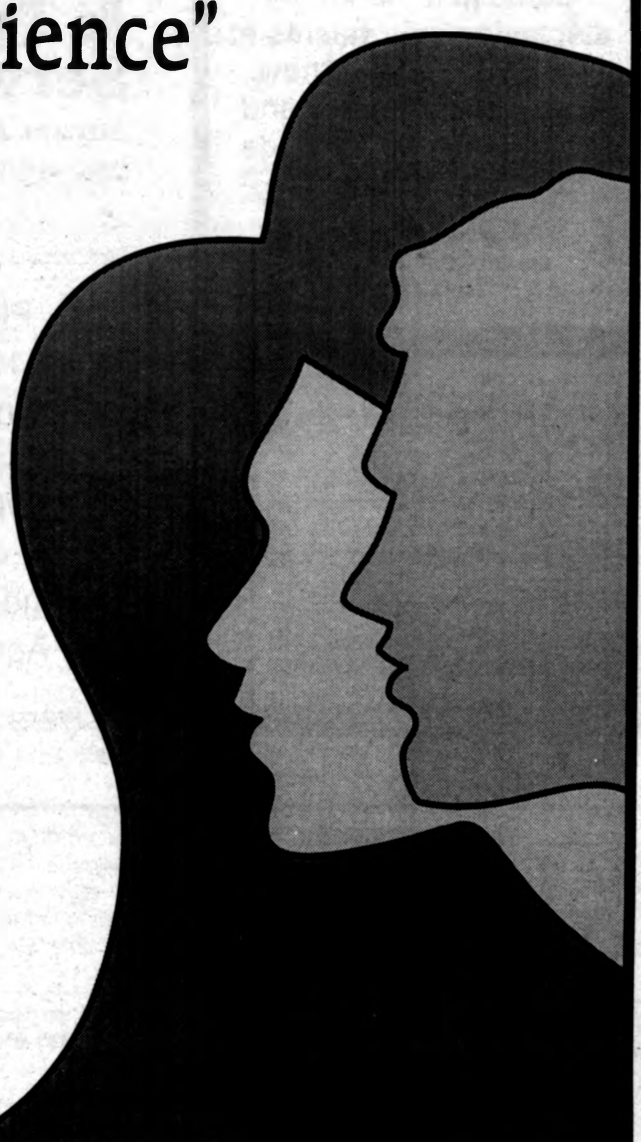
One of every six couples in America will have difficulty conceiving a child. Understanding infertility and coping with the wide range of emotions over the inability to conceive can be a traumatic event for a couple.

Family members and friends are encouraged to attend the program to help them better understand the issues of infertility. The conference also is recommended for healthcare professionals.

Topics covered by physicians and other professionals will include:

- several sessions on adoption, including Missouri adoption law and adoption readiness
- semen analysis
- infertility risks and treatment
- the art of IVF/GIFT

For more information, call 882-7199.



## CALENDAR

Continued from Page 15.

### Thursday, April 13

**FACULTY COUNCIL:** Group will meet at 3:40 p.m. in S110 Memorial Union.

## Special Events

### Thursday, April 6

**WELLNESS:** "De-Light Yourself," a nicotine dependency program, will be offered from 3-5 p.m. on Thursdays at the Health Information Center in Columbia Mall. Cost: \$3. To make an appointment, call 882-6565.

**NUTRITION:** L.E.A.N. for Life, a weight-management program, will be offered at 3:30 p.m. in the Cosmopolitan International Diabetes Center classroom at University Hospital and Clinics. To register, call 882-2251.

### Friday, April 7

**MUSEUM ASSOCIATES EVENT:** An opening reception will be held at 7 p.m. in the Museum of Art and Archaeology in honor of the Missouri Arts Council Visual Artists' Biennial exhibit.

### Monday, April 10

**COMPUTER EVENT:** Campus Computing Repair Services and Computer Spectrum are offering the "Computer Service and Upgrade Fair" April 10-14. For information, call Computer Spectrum at 882-2131.

**STAFF RECOGNITION WEEK '95:** Staff recognition ceremonies will be held from 1:30-3:30 p.m. in Jesse Auditorium. Refreshments will be served following the ceremony.

### Tuesday, April 11

**EARTH DAY PROGRAM:** Jim Steele of Boone Hospital Center and representatives of State Farm Insurance, Columbia Public Works Department and Civic Recycling will present "Recycling Program for Your Business" at noon at Boone Hospital Center. For information call 875-0539.

**STAFF RECOGNITION WEEK '95:** Fashion Show. Staff members will model fashions from local businesses from noon-1 p.m. in Memorial Union Auditorium. Please bring a can of non-perishable food for the food drive.

**HEALTH SCREENING:** Body composition screening will be offered from 4-5:30 p.m. at the Health Information Center in Columbia Mall. Cost: \$3. To make an appointment, call 882-6565.

### Wednesday, April 12

**STAFF RECOGNITION WEEK '95:** Variety Show will be held from noon-1 p.m. in Jesse Wrench Auditorium, Memorial Union South. Please bring a can of non-perishable food for the food drive.

**BREAST-FEEDING CONSULTATION:** Lori Lampe, certified lactation specialist, will offer free consultations for breast-feeding mothers Wednesday afternoons at the Health Information Center in Columbia Mall. To make an appointment, call 882-6973.

### Thursday, April 13

**STAFF RECOGNITION WEEK:** MU Health and Wellness Fair will be held from 11 a.m.-2 p.m. in Brewer/Rothwell gymnasium. Staff have free use of the facility and equipment April 10-16.

### Friday, April 14

**POETRY READING:** Louise Gluck, Pulitzer Prize-winning poet, will present her poetry at 7 p.m. in the Faculty Alumni Lounge, S304 Memorial Union.

## Sports

### Saturday, April 8

**SOFTBALL:** Tigers will play Iowa State at 1 p.m. at home.

### Sunday, April 9

**SOFTBALL:** Tigers will play Iowa State at 11 a.m. at home.

### Tuesday, April 11

**SOFTBALL:** Tigers will play Southwest Missouri State at 3 p.m. at home.

## Call for Entries

for  
Staff Recognition Week '95

## Variety Show

*Not necessarily a  
talent show!*

Noon, Wednesday, April 12  
Memorial Union - South  
(Wrench Auditorium)

Come join the fun by  
displaying your talents at  
the Staff Variety Show.  
Musicians, Dancers and  
Entertainers of all kinds  
are needed.

For more information,  
contact Gail Lawrence,  
882-4731

I would like to participate in the  
Variety Show!

Name \_\_\_\_\_

Department \_\_\_\_\_

Day Phone \_\_\_\_\_

Return this to Gail Lawrence,  
107 Swallow Hall by FRIDAY, APRIL 7

## Parking & Transportation Services

Turner Ave. Garage, Level 2  
882-4568

Please observe the posted speed limit of  
10 mph on East Campus Drive between  
Rollins Street and Trowbridge Livestock Center.



Maryland Avenue Garage Construction Update:  
The crane will arrive on April 17.  
The first precast panels will be set beginning  
April 24 on the north section of the garage.

# CLASSIFIEDS

### FOR RENT

**DUPLEX FOR RENT:** Available May 1, 1995. Two bedrooms, 1.5 baths, one-car garage. In Georgetown subdivision, 4609D Millbrook Drive. Close to campus. 445-2553.

**SABBATICAL HOUSE:** Three bedrooms; two baths; carpeted family room; C/A; low utilities; fenced, wooded lot; W/D; dishwasher; microwave. Furnished. Absolutely no smokers or pets. May 1995 to June 1996. 445-9908.

### WANTED

**ACADEMIC ROBES:** Want to purchase two doctoral-level academic robes; one to fit a 5-foot person and one to fit a 6-foot-1-inch person. Call 445-7522.

### SERVICES

**VIDEO PRODUCTIONS!** Weddings, reunions, photo albums. Graphics, computerized photo restoration and music preserve your precious memories or convey your business message for seminars, training videos and commercials! (314) 443-5226.

**COUNSELING.** Individuals, couples, families, groups. Point-of-service health insurance provider; 20 years of experience. Call Patrick Kane, LCSW, DCSW, 449-0120.

**PHD IN ENGLISH** with 20 years of college teaching and experienced in editing. Will edit books, monographs, dissertations, papers for publication or presentation, proposals, newsletters. Office near campus. Telephone 445-6690.

**COMPUTERIZED TAX PREPARATION.** Taxes prepared professionally at reasonable rates using laser tax software. References available. Confidentiality assured. More than 10 years of experience. Electronic filing available. Call Kellogg Business Services at 445-7557.

**COUNSELING/PSYCHOTHERAPY.** Marital, relationship, personal, educational, vocational; 25 years of experience with faculty, staff, students. Sliding fee scale. Don Eggeman, psychologist, 1205 University Ave. (next to parking garage), Suite 400. 449-6190.

**FREE-LANCE EDITING** by long-time professor, funded author, editor. Books, theses, papers, presentations, grant proposals. Can also brainstorm publishing strategies. Reasonable rates, prompt delivery. 449-5886 evenings.

The Classified Advertising Section is open only to faculty and staff members and retirees. A home phone number is required in all classified ads. No refunds will be given for cancelled ads.

**Ads must be typed.**  
Rates: 30-word maximum \$3.

**Publication deadlines:**  
April 11 deadline for April 20 issue  
April 18 deadline for April 27 issue  
**Mizzou Weekly Classifieds:** Make your check payable to University of Missouri and send to: *Mizzou Weekly*, 407 Reynolds Center, Attention: Tanya Stitt.



University Libraries  
University of Missouri

### Digitization Information Page

Local identifier                      MizzouWeekly(print)

### Source information

Format                                      Newspaper  
Content type                                Text with images  
Source ID                                  Duplicate copies University Archives weeded out  
Notes

### Capture information

Date captured                              July-December, 2022  
Scanner manufacturer                      Plustek OpticBook  
Scanner model                                A300 Plus  
Scanning system software                    Book Pavilion  
Optical resolution                            600 dpi  
Color settings                                8 bit grayscale for majority of pages;  
    24 bit color for color illustrations/portraits/photographs  
File types                                      tiff  
Notes

### Derivatives - Access copy

Compression                                Tiff: LZW compression  
Editing software                              Adobe Photoshop 2022  
Resolution                                    600 dpi  
Color    same as captured  
File types                                      pdf created from tiffs  
Notes    Images cropped, straightened, and brightened.