

MIZZOU

W E E K L Y

University of Missouri-Columbia March 21, 1996

INSIDE THE WEEKLY

Page 4: MU will add a third phone exchange this summer

Page 8: Training sessions focus on continuous quality improvement

Head of the class *MU's graduate programs in education, journalism, medicine rank among the best nationally*

Mizzou is cited among the leading graduate programs in journalism, medicine and education in rankings compiled by *U.S. News and World Report* in the magazine's March 18 survey of America's best graduate schools.

MU's graduate print journalism program is ranked the best in the nation. It is the only university in the Big Eight cited in *U.S. News'* first-ever survey of graduate schools of journalism and mass communication.

Overall, MU's journalism programs were ranked in the top 12 of those surveyed. The broadcast program was ranked third in the country; the advertising program came in at ninth, and the public relations program was ranked 12th.

"We are delighted with the formal recognition, of course," said Dean Mills, dean of journalism. "But we believe the true quality of the school is shown not by reputational surveys, but by the year-to-year quality of our faculty, students and our graduates. We believe they are truly the best."

The College of Education's graduate programs in practical arts and vocational-technical education as well

as educational and counseling psychology were ranked third and fifth in the country, respectively, and stand alone among Big Eight schools.

The new rankings mark the second time that education programs have been examined as part of the magazine's guide to top U.S. graduate schools. In the report, education schools and individual programs are ranked according to their performance in five categories: faculty resources, research activity, student selectivity and two separate measures of reputation. Both departments ranked fourth in last year's guide.

"We are very pleased that both departments have been given such positive national recognition for the second year in a row," said Richard Andrews, dean of education. "These two departments have sustained this kind of recognition over the past decade, and it is our goal that all departments and programs in the college will receive the same national distinction that these two departments have already achieved."

The School of Medicine was the only medical school in Missouri cited among the nation's top 15 primary care programs. Medical school deans and senior faculty

ranked the school sixth in that category and — again this year — rated it second in the nation in the specialty category for family medicine.

To rank the medical schools, *U.S. News* divided them into two categories — research and primary care.

Criteria for the rankings included student selectivity, faculty-student ratio, reputation and the number of graduates entering primary care. Two other Big Eight medical schools made the listing. The University of Colorado and the University of Kansas rank 13th and 15th respectively among primary care-oriented schools. The only other Missouri school included is Washington University, which placed fourth among research-oriented schools.

"We were excited last year when the school made the top 10, but this year brings even better news," said Lester Bryant, dean of medicine. "Moving up four places this year shows that not only is the Health Sciences Center succeeding in building up its primary care and rural programs, but also that others are recognizing these accomplishments on a national level."

Just like the real thing

Mock interview day gives high-school students a glimpse at MU's job opportunities

Job interviews don't usually top teenagers' lists of favorite things to do. But earlier this month, 180 area high-school students spent the day doing nothing else at MU's mock interview day.

The purpose of the program is two-fold, says Leo Agnew, human resource specialist and coordinator of the March 6 event. The experience gives high-school students a first-hand look at interviewing, and it promotes MU as a potential employer.

"The goal is to get high-school students ready for jobs and the real world," Agnew says.

Hosted by Human Resource Services, the event is one of the major activities in the Partners in Education program that pairs MU's Administrative Services division with the Columbia Area Career Center.

This partnership is unique because most of the skills taught at the career center match job opportunities at MU. For example, students at the career center involved in the health related professions program could find jobs at MU's medical school. In fact, students were interviewed by MU employees from a field matching their area of interest. The 30 interviewers were chosen from fields such as Campus Computing, Campus Facilities, the School of Medicine, Animal Sciences, Food Services and the College of Veterinary Medicine.

The Columbia Area Career Center is open to students from Hickman, Rock Bridge, Hallsville, Ashland, Christian Fellowship and Douglas high schools who want to supplement

their education. Some of the programs available are auto mechanics, construction technology, early-childhood development, accounting, health-related professions and desktop publishing.

Students from the center say that the best thing about the program is the experience they gain in a professional field. "You can find out if you are going to like something before you go to college and spend a lot of money," said Stephanie O'Brien, a junior from Hallsville.

While most of the students enrolled at the career center do plan to attend college, the interviewers found them to be well-prepared to enter the job market now. "They are much more sophisticated than I expected and have been trained very well," said Hsiao-Mei Weidmeyer, lab project director at the medical school.

One of the few problems the interviewers found was that students didn't have clear career goals because they didn't know about all of the choices available. "I tried to help out the students by giving them information about other options in child development besides just child care," said Julia Moore, assistant instructor in the Child Development Laboratory.

When they were not being interviewed, students learned about the career opportunities available on campus. MU employees discussed job descriptions, minimum qualifications and salaries of various jobs, pointing to the range in positions depending on education and experience.



Pam Twenter, an administrative associate in obstetrics and gynecology, asks Hickman High School junior Chisa Faulkner questions during MU's mock interview day.

Nancy O'Connor photo

FOCUSING ON UNDERGRADUATES

John Gardner, director of the University of South Carolina's nationally acclaimed Freshman Year Experience, will share his expertise with faculty, staff and students when he visits MU next week. Gardner will speak on "Large Universities' New Focus on Undergraduates: Early Interventions That Make a Difference" from 1:30 to 3:30 p.m. March 28 in the Electrical Engineering Auditorium in Engineering Building West.

Gardner's special expertise is in creating programs to enhance the learning, success, retention and

graduation of students in transition, especially freshmen. He has served as a workshop leader and consultant on those issues at more than 300 campuses. Gardner has written or co-written many books and articles, including *College Is Only the Beginning*, *Step by Step to College Success*, *Your College Experience*, *The Freshman Year Experience* and *Ready for the Real World*.

At South Carolina, one part of Gardner's freshman year program is University 101, the nationally acclaimed and widely replicated freshman seminar. He also is director of the National Resource Center for the Freshman Year

Experience and Students in Transition, associate vice provost for regional campuses and continuing education, and professor of library and information science. With questions about Gardner's presentation, contact MU's Program for Excellence in Teaching at 882-6260 or at pet@showme.missouri.edu

CURATORS TO HOLD HEALTH CONFERENCE

Members of the Board of Curators will meet with medical educators and legislators in a roundtable discussion about the University's role in mid-Missouri. The

conference will be held at 8 a.m. March 23 in the second-floor classroom of the National Guard Armory in Jefferson City. The public is invited to attend.

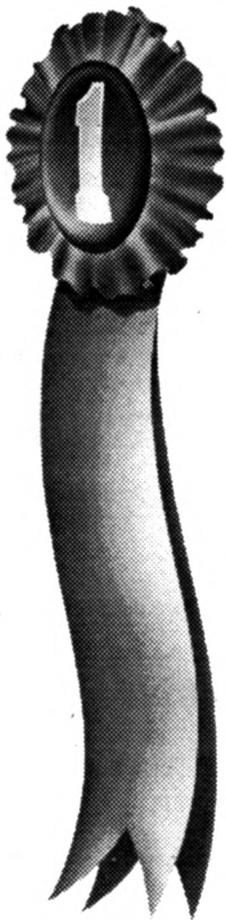
Roundtable participants will include Curator Theodore Beckett of Kansas City, who is chairman of the board's University Hospital and health sciences committee; Congressman Ike Skelton and Lester Bryant, dean of medicine.

PEACE PERSPECTIVES

Essayist, columnist and author Barbara Ehrenreich will present the 1996 Peace Perspectives lecture at 8 p.m. March 25 in Keller

Auditorium in the Geological Sciences Building. Ehrenreich will present "The Role of Wild Carnivores in the Genesis of War: A New Evolutionary Perspective," which is based on a book she recently completed.

She has been an essayist for *TIME* magazine since 1990 and a columnist for the *Guardian* in London since 1991. Her feature articles, reviews, essays and humor have appeared in a wide range of national publications. Ehrenreich also has served as a fellow at the Institute for Policy Studies in Washington, D.C.; and an assistant professor at the State University of New York.



Barbara Stout was elected as the February Employee of the Month at the Hearnese Center. Barb has been working at the Hearnese Center for 16 years and has been a valuable asset to our department. She is one who is always willing to help with whatever might be needed. She is dependable and works the hours needed to get the job done — even if it means putting in extra hours. Thanks, Barb, for your outstanding performance at the Hearnese Center.



From Reality to Virtual Reality: New Tools for Distributed Learning

Announcing a live satellite teleconference where you will hear from pioneers of virtual reality, explore some of the worlds they have created, and hear their assessment of virtual reality as a means for creating dynamic and engaging learning environments.

Virtual reality isn't just for computer scientists anymore!

Thursday March 21, 1996, 1:30-3 p.m.
Academic Support Center, Room 20
505 E. Stewart Road
University of Missouri-Columbia

Call for Entries for Staff Recognition Week '96

Variety Show

Noon, Thursday, April 18
Arts & Science Building
(Allen Auditorium)
Come join the fun by displaying your talents at the Staff Variety Show. Musicians, dancers and entertainers of all kinds are needed.

For more information contact Gail Lawrence 882-4731

I would like to participate in the Variety Show

Name _____
Department _____
Day Phone _____

Return this to Gail Lawrence, 107 Swallow Hall by MON., APRIL 1

Models are needed for the **Staff Fashion Show**

Noon, Tuesday, April 16
Memorial Union-South
(Jesse Wrench Auditorium)

We are looking for 20 staff, both male and female, to model a variety of clothing. Entry deadline is March 27.

For more information contact Karen Smith 884-8032

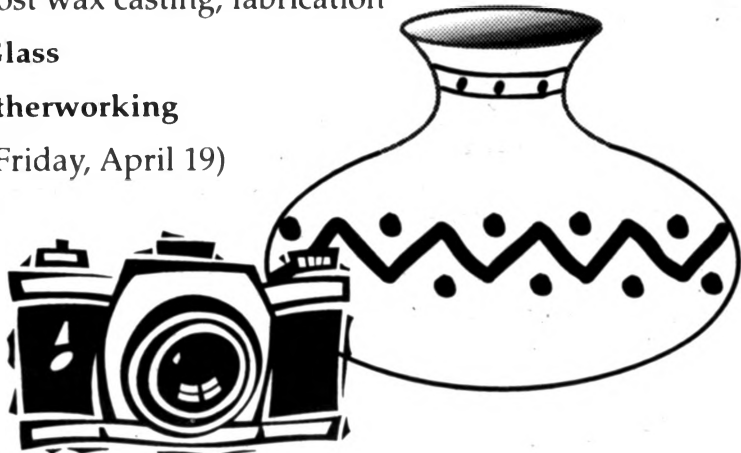
I would like to participate in the Fashion Show

Name _____
Department _____
Day Phone _____

Return this to Karen Smith, 10 London Hall by WED., MARCH 27

CRAFT STUDIO

- Clay: pot throwing, Raku, handbuilding handmade tiles
- Photography: black and white, alternative processing, intro to the camera
- Jewelry: lost wax casting, fabrication
- Stained Glass
- Basic Leatherworking
- Tie Dye (Friday, April 19)



Sign up at the MSA/GPC ticket window in Brady. Classes start the week of March 25.

More information? Call the Craft Studio at 882-2889 or stop by 203 Brady Commons

Call Tanya Stitt, 882-7358,

to advertise in *Mizzou Weekly*.

Plummer to leave computing post

Kee W. Groshong, vice chancellor for Administrative Services, has announced that Bill Plummer has resigned his position as assistant vice chancellor for computing and will resume his role on the faculty as a member of the Department of Computer Science and Computer Engineering at the end of the current semester.

Plummer will pursue his research and teaching interests in the areas of visual computing and synthetic environments. In making the announcement, Groshong described Plummer as a true visionary and highlighted his many contributions, including the campus data network, MOREnet, COIN, the Adaptive Computing Center, the Digital Media Research and Development Center and

client/server data base technology.

Provost Edward Sheridan joined Groshong in announcing that Ralph H. Caruso, chief information officer for the UM System, has accepted their request to assist the MU campus during this period by also serving as interim assistant vice chancellor.

Caruso's responsibilities will include the implementation of the Information Technology Support Plan completed last fall and more recent recommendations. He is expected to work closely with the computer policy and strategy committee appointed last fall by the provost and chaired by Jim Thompson, dean of engineering. A search for a permanent replacement is expected to commence later this summer.

We've Got What You Need.



LIQUID PAPER™
DryLine™

Single Line Correction Film; Non-Refillable Dispenser
No More Drying Time Needed!

Stk #0124 \$2.02 Each

General Stores
882-6906

FOR THE RECORD

It's that time of year again. Almost before you know it, your lawn will be green and growing — and growing and growing and growing. Maybe this is the time to get your lawnmower or garden tiller in shape. MU's Agricultural Systems Management Club is holding its annual spring lawn mower and tiller tune-up event. You can drop off your mower or tiller from 3 to 6 p.m. March 20, 21 or 22 on the east side of the Agricultural Engineering Building and pick it up from 4 to 7 p.m. March 25 or 26. With questions, call 882-2369.

An incorrect e-mail address was included in a March 7 *Mizzou Weekly* article on a new master's program in health administration at MU. The correct address for the program coordinator is 74044.2077@compuserve.com.

An article on Michael Cheers, the MU alumnus and photojournalist who co-directed the award-winning "Songs of My People" photo project, in the March 7 issue incorrectly identified Cheers' residence. Cheers, who earned a doctorate in African studies from Howard University, resides in Johannesburg, South Africa, where he is the managing editor of *Ebony South Africa*.

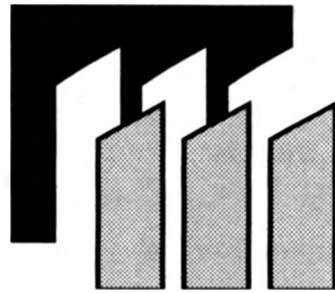
MIZZOU WEEKLY

Volume 17 Number 22

A publication for University of Missouri-Columbia faculty and staff, published every Thursday during the academic year and twice a month during the summer by Publications and Alumni Communication, a department of University Affairs, 407 Reynolds Alumni and Visitor Center, 882-7357. News deadline is noon Thursday the week before publication. Annual subscriptions are available for \$20.

Interim editor..... John Beahler
Graphic editor..... Larry Boehm
Director of advertising..... Tanya Stitt
Staff writer..... Sara Grier
Student assistants..... Christie Studdard
..... and Tamorro Wilkins

Printed with soy ink on recycled newsprint containing 90 percent to 100 percent post-consumer waste.



**MIZZOU
CREDIT
UNION®**

*...meeting our members'
retirement needs*

IRA Savings

5.98%* APY

* Feb. '96 accrual rate-subject to change
call Mizzou Credit Union for current rate information

- open with only \$250
- add each payday with
Payroll Deposit

no cost Retirement Planning
is available with
Ron Koestner, CLU
at the **PLAN AMERICA** Center
located at Mizzou Credit Union.



PLAN AMERICA® is a service of CLINA Brokerage Services, Inc. 5910 Mineral Point Road, Madison, WI 53705, Member NASD, SPC. PLAN AMERICA Representatives are also licensed insurance representatives of Century Life of America, an affiliate of the CUNA Mutual Insurance Group. The products offered through the PLAN AMERICA program 1) are not federally insured; 2) are not obligations of the credit union; 3) are not guaranteed by the credit union or any affiliated entity; 4) involve investment risks, including the possible loss of principal.



**MIZZOU
CREDIT
UNION®**

Monday - Thursday 7:30 a.m. - 5:30 p.m.
Friday 7:30 a.m. - 6:00 p.m.
Saturday 9:00 a.m. - 12:30 p.m.

Phone 874-1477 or 800-451-1477



Faculty, Staff, Students and their families are eligible to join.
Call For Membership Eligibility Requirements today!

Parking & Transportation Services

Turner Avenue Garage
Level 2
882-4568

CG15 south has reopened and is available for CG15 parking permit holders only.

NUTRITION EMPHASIS WEEK 1996

The University of Missouri F21C Nutritional Sciences Group cordially invites the Columbia community to attend four special lectures on the

Role of Nutrition and Cancer and Heart Disease which will highlight Nutrition Emphasis week 1996.

Monday, March 25, 2 p.m.-Jesse Wrench Auditorium
Dr. Joanne Lupton, Ph.D.,
William W. Allen Endowed Chair

Human Nutrition, Texas A&M University
will present "*Dietary Fiber and Colon Cancer: An Evolving Perspective*"

Monday, March 25, 3:30 p.m.-Jesse Wrench Auditorium
Dr. Walter C. Willett, M.D., Ph.D.,
Professor of Medicine, Harvard Medical School

will present "*Dietary Fat: The Number One Nutritional Threat to Health?*"

Tuesday, March 26, 8:15 a.m.-M105 Medical Sciences
Dr. Walter C. Willett, M.D., Ph.D.,
Professor of Medicine, Harvard Medical School
will present "*New Developments in Diet and Heart Disease*"

Tuesday, March 26, 9:30 a.m.-MA223 Medical Sciences
Dr. Joanne Lupton, Ph.D.,
William W. Allen Endowed Chair
Human Nutrition, Texas A&M University
will present "*Funding Nutrition Research: What are the Options?*"

All lectures are free and open to the public.

Sponsored by the F21C Nutrition Cluster, MU Medical School, College of Agriculture, Food and Natural Resources, College of Human Environmental Sciences, Missouri Beef Industry Council, St. Louis District Dairy Council, American Heart Association-Missouri Chapter

Hold the phone

MU will inaugurate a third phone exchange

The University community will have a new set of numbers to memorize after July 8. That's when MU will add a third telephone exchange and gain access to another 10,000 telephone numbers. The "771" exchange will join the existing exchanges of "882" and "884." Over time, the "771" exchange will be used primarily for telephones in residence halls and patient rooms at University Hospital.

The new exchange is needed in part because of the ever-increasing demand for telephone-based services such as modems, fax machines and pagers. By last October, nearly 17,000 telephone numbers were assigned in MU's telephone switch. That left fewer than 3,000 numbers available at a time when demand for new numbers is growing by about 85 a month. Without the new exchange — and given the same growth rate — Telecommunications estimates that MU would run out of telephone numbers within 35 months.

Selecting a new three-digit exchange for the MU campus wasn't cut and dried. No matter which number was chosen, it

would require changes in dialing procedures. All the other local exchanges beginning with "88" already were spoken for, with the exception of "889." But because 9 is dialed before placing a local call from campus phones, selecting "889" as MU's new exchange would make it necessary to eliminate on-campus five-digit dialing.

The selection of "771" was not without its problems, either. However, those problems are relatively minor and will require only some slight changes in long-distance dialing. That's because the current method for placing a long-distance call is first to dial "7" and then a six-digit authorization code. Selecting the "771" exchange will conflict with that function of MU's phone system as it exists now.

Mizzou Telecom staff are still working to resolve some of the issues that will crop up with the new exchange, but faculty, staff and students can expect to see some minor change in the way they place their long-distance calls after July 8. Telecom will keep the campus informed on the new exchange.

Addressing the 'crisis'

Bruce Biddle, professor of sociology, has been receiving plenty of national attention for his recent book, *The Manufactured Crisis: Myths, Fraud, and the Attack on America's Public Schools*. The book attacks critics who say the current American public school system is getting worse each day.

Biddle, and his co-author, David Berliner, professor of education at Arizona State University, suggest instead that statistics being used to decry the school system are misrepresented and that American public schools are, in fact, doing very well in providing a diverse population with the opportunity to better their lives.

The two co-authors, who say they wrote the book "in an outrage," will present their views at a special symposium on campus and will answer questions from their critics and the public. The symposium will be held from 3:30 to 5:30 p.m. March 22 in Townsend Auditorium. In addition to Biddle and Berliner, the panelists will include Michael Podgursky, chairman of MU's Department of Economics, and David Geary, professor of psychology and an expert on the development of children's math skills.

Campus Master Plan

Public Hearing

Monday, March 25

12:40-1:30 p.m.

Courtroom 112, Hulston Hall

The campus planning committee invites all MU faculty, students, staff and visitors to a public hearing on the campus master plan. At the hearing, Larry Edwards, associate director of Campus Facilities, will conduct a slide presentation documenting the evolution of the campus and highlighting upcoming development projects.

Attendees are encouraged to offer their comments and suggestions during the question and answer period.

NEW EXTENDED HOURS

Starting after Spring Break



Main Level Brady Commons
Mon. - Thurs. 7:30 a.m. - 11 p.m.
Fri. 7:30 a.m. - 7 p.m.
Sun. 3 - 11 p.m.



BLAIR OASIS
SUBWAY
Blair Hall
Mon. - Fri. 9 a.m. - Midnight
Sat. - Sun. Noon - Midnight

The Campus Master Plan

Mizzou's Campus Master Plan is an ongoing process that began in 1980 to study the use of campus land and buildings for optimum efficiency and aesthetic appeal.

This supplement summarizes the plan's accomplishments, shown on the map inside, and the next steps in the process. Readers' comments are welcome — feel free to write in the margins and return the supplement to the campus planning committee, c/o Ruth Brent, chairwoman, 142C Stanley Hall.

A videotape on the master plan may be borrowed by calling 882-2661.

"Comments and reactions have helped to shape the plan," says Jack Robinson, consultant to the campus administration who works with the campus planning committee, which includes faculty, staff and students. The committee advises the vice chancellor for Administrative Services on campus planning issues.

In forming the plan, more than 50 public hearings were held for the campus and community in the past 12 years. They included slide shows and status reports on space needs and specific projects. Progress reports are presented annually in open meetings. "New ideas always are welcome," Robinson says.

He describes the master plan as building on



Academic Hall was the focus of the campus in 1875.

Mizzou's traditional campus to create a unified, efficient environment that is inviting to students and conducive to teaching, research and support services. It also seeks to strengthen ties of cooperation between the campus and neighboring Columbia.

"Building projects and adequate parking are under constant study and modification," Robinson says. "For a successful total campus, however, they should be developed within a strong, handsome sequence of major open spaces and of major cross-campus pedestrian ways. Mizzou's system of quadrangles, courtyards, malls and playing fields can be linked, improved and extended to help unify the total campus."

The general objectives for the plan (see box) are intended to help test the plan concepts and proposals, and specific projects as they are developed. The objectives, Robinson notes, are consistent with the Board of Curators' 1981 policy statement, which includes as a goal "to maintain and make more efficient and attractive the University's physical plant."

The objectives have helped to shape projects recently completed and those now in process. "The interesting story is not in any one project, but in the way in which they reinforce each other," Robinson says. With the plan's overall guidance, he says, campus improvements should blend in with their surroundings so well that they will appear to have been there from the start.

Master plan drawings appear on the next two pages.

THE PLAN BUILDS ON TRADITION TO CREATE AN INVITING CAMPUS.

PLANNING PRINCIPLES

- **PRIDE OF THE STATE:** visual and functionally expressive of the importance of this campus to the state of Missouri
- **RECRUITMENT-RETENTION AID:** environmental qualities which help attract and hold faculty, staff and students
- **STRONG "SENSE OF PLACE":** distinctive and memorable to entering freshmen and visiting scholars alike
- **UNIFIED TOTAL CAMPUS:** the totality of the campus revealed

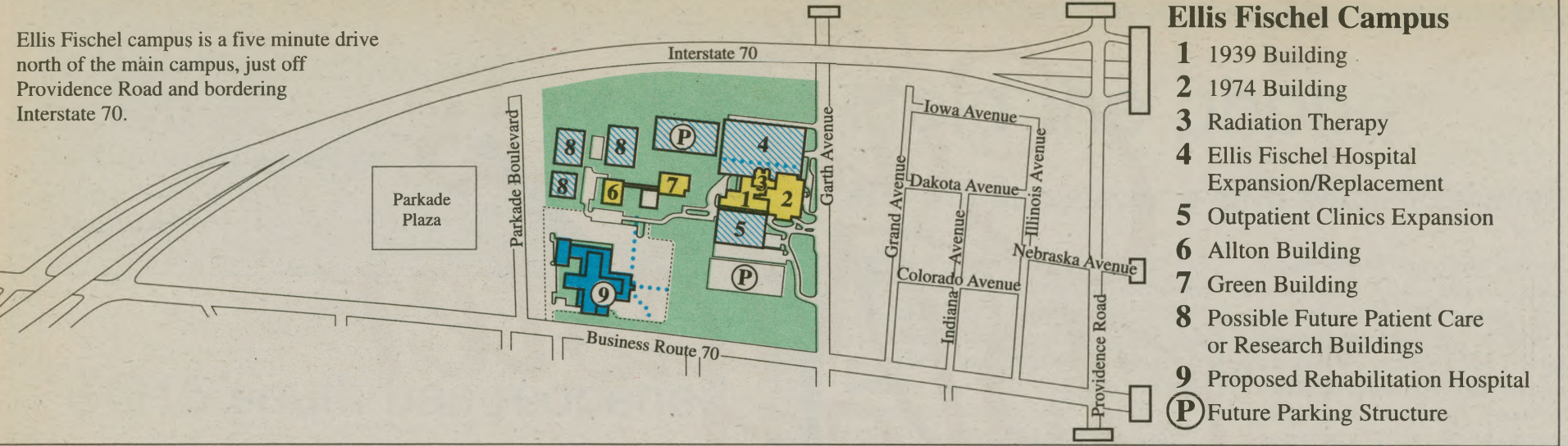
- and clarified to all observers, dominating component parts
- **DIVERSITY WITHIN THE UNITY:** clarifying and expressing the variety of activities, of people, of inheritance from the past
- **PEDESTRIAN DOMINANCE:** visual and functional pedestrian dominance over vehicles within the campus
- **VEHICLES RECOGNIZED:** the needs of an automobile-oriented society accommodated gracefully without being permitted to dominate pedestrians within the campus

- **FUNCTIONAL ADEQUACY:** each activity of the campus with facilities appropriate for its purposes; not constrained, not lavish, but adequate
- **RESPONSE TO ACCESSIBILITY NEEDS:** continuing the campus tradition of providing optimal access to people with disabilities
- **PROXIMITIES ENHANCED:** activities located close to each other whenever required or potentially beneficial
- **EXPANSION OR RELOCATION PROVIDED:** clear identification of at least one logical way for

- expansion (or relocation) of an activity, should such a change be desirable
- **RESPONSIVE TO CLIMATE:** careful design of building and of landscape so as to serve as models for others in similar climates
- **RESPECT FOR INHERITANCE:** accenting and continuing the topographic and architectural history of the best parts of the campus
- **RESPECT FOR NEIGHBORS:** avoiding adverse impacts and cooperating wherever possible to achieve civic objectives



Ellis Fischel campus is a five minute drive north of the main campus, just off Providence Road and bordering Interstate 70.



- ### Ellis Fischel Campus
- 1 1939 Building
 - 2 1974 Building
 - 3 Radiation Therapy
 - 4 Ellis Fischel Hospital Expansion/Replacement
 - 5 Outpatient Clinics Expansion
 - 6 Allton Building
 - 7 Green Building
 - 8 Possible Future Patient Care or Research Buildings
 - 9 Proposed Rehabilitation Hospital
 - P Future Parking Structure

New Buildings Recently Completed:

- 1 Donald W. Reynolds Alumni and Visitor Center
- 2 Engineering Addition
- 3 Schlundt Annex Addition
- 4 Clydesdale Hall (Veterinary Medicine)
- 5 Anthropology Lab and Storage Building
- 6 Intercollegiate Athletics Additions
- 7 Lee Hills Building (Journalism)

New Buildings Recently Completed:

- 12 Eckles Addition
- 13 Critical Care Tower and Ambulatory Care Clinics
- 14 Research Reactor Addition
- 15 Intercollegiate Athletics Additions
- 16 Hitt Street Parking Structure
- 17 Brady Addition
- 18 Black Culture Center

New Buildings in Design or Construction:

- 8 MFA Building
- 9 Natural Resources
- 10 Chemistry Addition
- 11 Biosciences Research Center

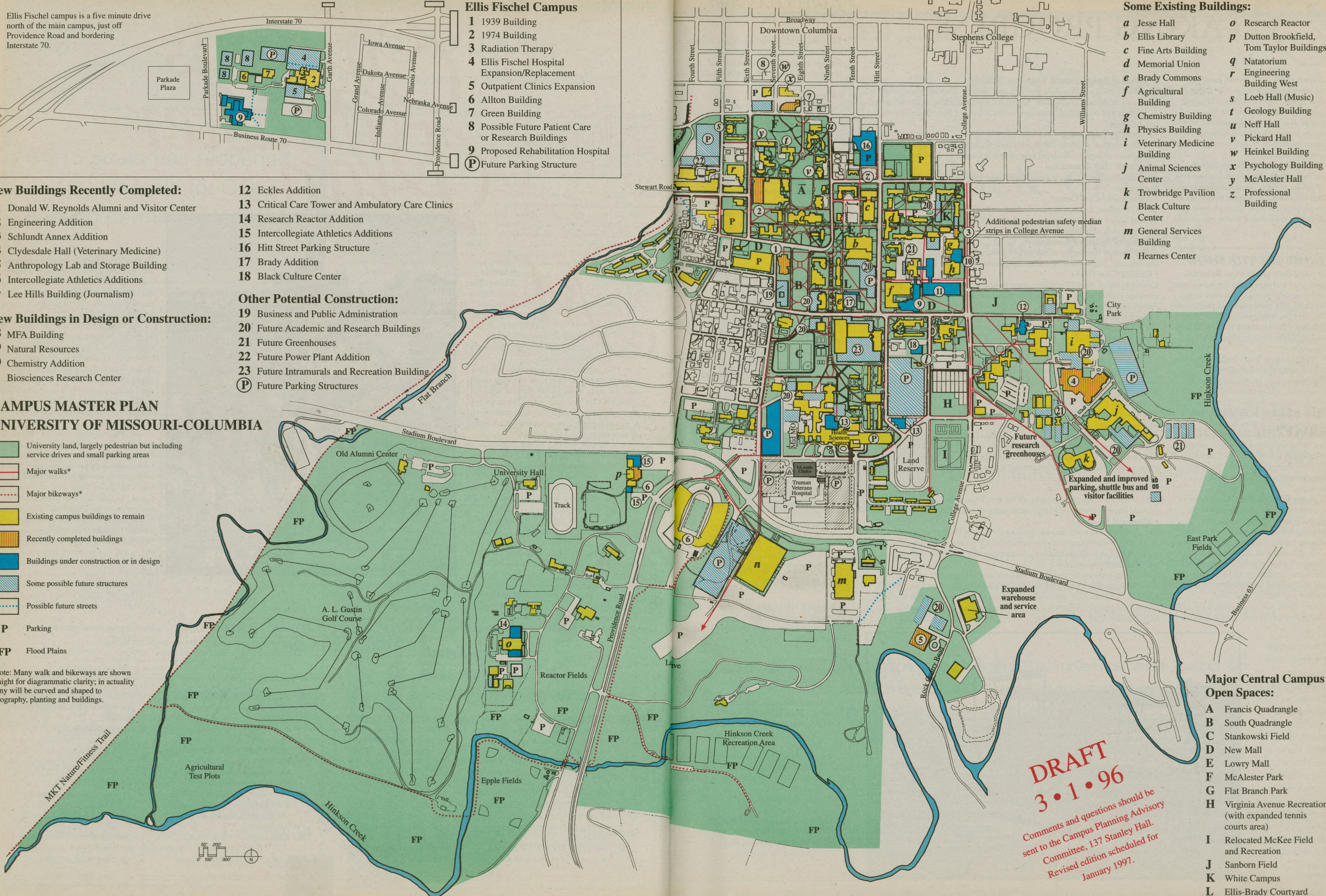
Other Potential Construction:

- 19 Business and Public Administration
- 20 Future Academic and Research Buildings
- 21 Future Greenhouses
- 22 Future Power Plant Addition
- 23 Future Intramurals and Recreation Building
- P Future Parking Structures

CAMPUS MASTER PLAN UNIVERSITY OF MISSOURI-COLUMBIA

- University land, largely pedestrian but including service drives and small parking areas
- Major walks*
- Major bikeways*
- Existing campus buildings to remain
- Recently completed buildings
- Buildings under construction or in design
- Some possible future structures
- Possible future streets
- P** Parking
- FP** Flood Plains

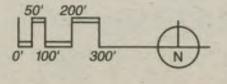
*Note: Many walk and bikeways are shown straight for diagrammatic clarity; in actuality many will be curved and shaped to topography, planting and buildings.



- ### Some Existing Buildings:
- | | |
|--------------------------------|---|
| a Jesse Hall | o Research Reactor |
| b Ellis Library | p Dutton Brookfield, Tom Taylor Buildings |
| c Fine Arts Building | q Natatorium |
| d Memorial Union | r Engineering Building West |
| e Brady Commons | s Loeb Hall (Music) |
| f Agricultural Building | t Geology Building |
| g Chemistry Building | u Neff Hall |
| h Physics Building | v Pickard Hall |
| i Veterinary Medicine Building | w Heinkel Building |
| j Animal Sciences Center | x Psychology Building |
| k Trowbridge Pavilion | y McAlester Hall |
| l Black Culture Center | z Professional Building |
| m General Services Building | |
| n Hearn Center | |

DRAFT
3.1.96
Comments and questions should be sent to the Campus Planning Advisory Committee, 137 Stanley Hall.
Revised edition scheduled for January 1997.

- ### Major Central Campus Open Spaces:
- A Francis Quadrangle
 - B South Quadrangle
 - C Stankowski Field
 - D New Mall
 - E Lowry Mall
 - F McAlester Park
 - G Flat Branch Park
 - H Virginia Avenue Recreation (with expanded tennis courts area)
 - I Relocated McKee Field and Recreation
 - J Sanborn Field
 - K White Campus
 - L Ellis-Brady Courtyard



MAKING PROGRESS

A master plan is an overall guide. It does not describe specific projects or design details, but rather establishes the larger context for them. At any one time, hundreds of campus improvement projects are in process. The funding comes from many public and private sources, often in complex combinations.

The master plan helps ensure the value of the expenditures and the success and long life of the projects. The tremendous growth that is occurring on campus will continue for the next few years. Here are some of the major projects now under way at MU.

COME SEE THE SHOW

If you'd like to learn more about the evolution and aspirations for our campus, the campus planning committee invites you to a slide presentation of the Campus Master Plan. The presentation is scheduled from 12:40 p.m. to 1:30 p.m. March 25, Room 12 in Hulston Hall Courtroom.

"Our campus looks better and better all the time," says Ruth Brent, chairwoman of the campus planning committee and professor of environmental design. "A university campus needs to be concerned with placemaking that goes beyond functional realities. Campuses are places for living and places for artful cultural expression."

"We strongly urge the University community to attend the public hearing."

Larry Edwards, associate director of Campus Facilities, will present more than 75 slides of old and current photographs, maps and drawings that document the evolution of the campus.

Brent adds that as the Campus Master Plan is reviewed and updated each year, comments and suggestions are encouraged from students, staff, faculty and visitors. The slide presentation may be scheduled for any campus group by calling 882-2661.

Construction projects have become a familiar sight on campus.

Construction workers are erecting the steel frame of the Ambulatory Care Center, which will house outpatient clinics, a pharmacy and laboratory space.

Rob Hill photo



• Anheuser-Busch Natural Resources Building

The \$18.5 million research facility will provide new laboratory and office space and a 500-seat auditorium. Scheduled for completion in late summer of 1998, it will consolidate programs of the School of Natural Resources in one building.

• Chemistry Addition

The \$8.7 million addition will provide new undergraduate teaching laboratories to replace outdated labs presently located in Schlundt Hall.

• Schlundt Hall Renovation

This renovation will provide new support and office space for the Chemistry Department.

• Ambulatory Care Center

The \$13 million center will provide University Hospital and Clinics with 95,000 square feet for its outpatient clinics. The first floor also will house a pharmacy and laboratory facilities.

• School of Medicine Renovation

A \$5.5 million renovation of the school's sixth floor will upgrade research space for the Department of Molecular Microbiology and Immunology.

• Critical Care Tower

Construction of the \$50 million, seven-floor tower next to University Hospital will replace the hospital's outdated intensive care units and consolidate critical care facilities.

• Black Culture Center

The \$1.8 million new facility will replace an existing house now used by the center. Completion of the 10,500 square foot project with offices, classrooms, a library and multipurpose room is scheduled for spring 1998.

• Hitt Street Parking Structure

The 2,000-car garage will provide parking in the heart of campus primarily for students. Construction of the \$12 million project is planned to start this fall.

• Maryland Avenue Parking Structure

The \$11.7 million project will provide 1,700 parking spaces for staff, faculty and students and will be completed in April.

• Stankowski Field

Intramural soccer, football and softball fields, along with basketball courts and an expanded one-third mile track are included in the \$4.3 million project. The area will be lighted for nighttime use and will have restrooms and other support facilities.

• Memorial Union

A \$1.9 million renovation project on the first floor of the north wing will provide improved student lounge areas and a revamped dining operation.

• Memorial Stadium

The current project will provide lighting for Faurot Field at a cost of \$621,000. Future improvements would include restroom and concession areas, as well as work on stadium concourses and a new main entrance.

• Other Improvements

Some other projects being considered around the University include renovations at Townsend Hall and the Engineering Building East, an addition to Eckles Hall, and a bike path from the heart of campus south, connecting with the Hinkson Creek Recreation Area and ultimately to the MKT Fitness Trail.

CAMPUS PLANNING COMMITTEE

The campus planning committee advises the vice chancellor for Administrative Services on the facility needs of the University. Members for 1995-96 are:

Chairwoman:

Ruth Brent, professor and chairwoman of environmental design

Faculty:

Richard Cox, professor and chairman of health and exercise science

Speer Morgan, professor of English

Marshall Masek, assistant professor of parks, recreation and tourism

Clyde Wilson, professor of anthropology

Earl Wilson, professor of accountancy

Staff:

Tim Byrd, architectural assistant with Planning, Design and Construction

Sarah Reesman, assistant athletic director with Intercollegiate Athletics

Trish Love, administrative associate I with the Campus Writing Program

Students:

Cheryl Bartlett, MSA representative

Chris Briggs, MSA representative

Clinton Berry, GPC representative

Ex Officio:

Jim Joy, director of Parking and Transportation Services

Chris Koukola, assistant to the chancellor for University Affairs

Carma Messerli, Access Office coordinator

Frankie Minor, director of Residential Life

Pat Morton, chief planning and budget officer and director of Institutional Research, Budget and Planning

Alan Warden, assistant vice chancellor for facilities

CAPITAL REVIEW COMMITTEE

The capital review group reviews campus planning and project issues for recommendation to the chancellor. Members are:

Chairman:

Kee W. Groshong, vice chancellor for Administrative Services

Members:

Edward Sheridan, provost

Brady Deaton, chief of staff

Hal Jeffcoat, vice chancellor for Development and Alumni Relations

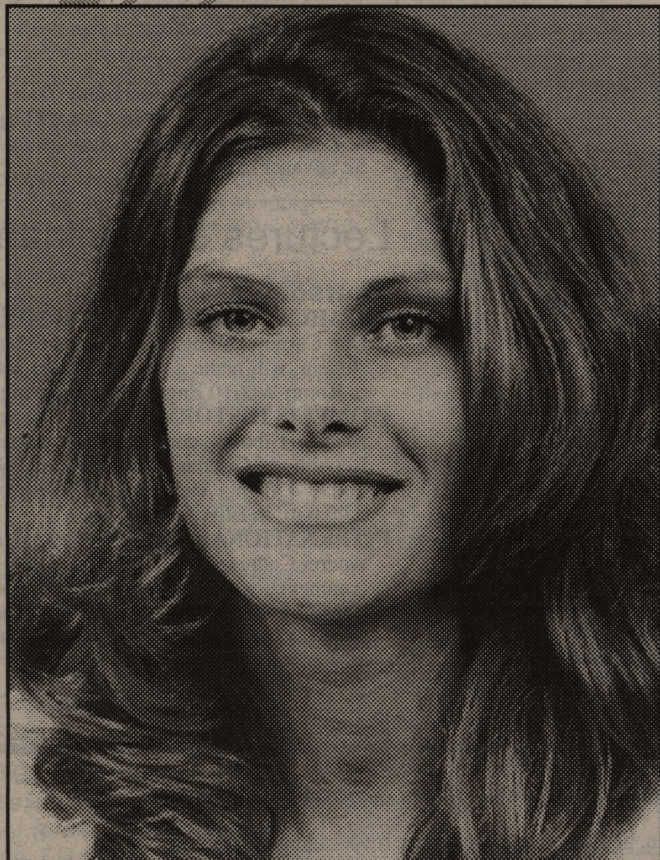
Pat Morton, chief planning and budget officer and director of Institutional Research, Budget and Planning

Charles Schroeder, vice chancellor for Student Affairs

Gary Smith, registrar and director of Admissions

Alan Warden, assistant vice chancellor for facilities

Congratulations to this Ellis Library Copy Center Scholar-Athlete of the Week



Jessica Haremza

Sport *Track and Field*
Major *Journalism*
GPA *3.389*

Ellis Copy Center would like to congratulate Jessica for earning All-American honors in the mile run at the NCAA Indoor Track and Field Meet in Indianapolis March 8 and 9, 1996.

“Athletics have helped me adjust to the ups and downs life brings. Through my athletic experiences, I will be better prepared for a career in advertising.”

Jessica Haremza’s accomplishments are hard to duplicate, but at Ellis Copy Center we can fulfill almost all your copying needs like champions.

**Ellis Library Copy Center
115 Ellis Library
Columbia, MO 65201-5149
Phone: (573) 882-7262
Fax: [573] 884-5004**

Hours: Monday through Thursday 7:30 a.m. to midnight • Friday 7:30 a.m. to 11 p.m.
Saturday 9 a.m. to 9 p.m. • Sunday noon to midnight

CALENDAR

Send calendar items by Campus Mail to
Mizzou Weekly Calendar, 407 Reynolds Center,
by noon Thursday the week before publication.
Events are free and open to the public unless otherwise noted.

Concerts & Plays

Thursday, March 21

MU SHOW-ME OPERA THEATER: Will perform "Susannah" March 21-23, at 8 p.m. and March 24 at 3 p.m. in the Rhynsburger Theatre. For ticket information call, 882-4640.

Saturday, March 23

STUDENT RECITAL SERIES: Christine Conklin and Richardo Souza, percussion, will perform at 3:30 p.m. in Whitmore Recital Hall. Gary Kurtis, conductor, will perform at 5 p.m. in Whitmore Recital Hall.

UNIVERSITY CONCERT SERIES: Ying String Quartet will perform at 8 p.m. in Jesse Auditorium. For ticket information, call 882-3781.

Sunday, March 24

JAZZ SERIES: Joanne Brackeen Quartet will perform "Dynamic Rythmsticks" at 3 p.m. in Whitmore Recital Hall. For ticket information, call 874-2218.

STUDENT ENSEMBLE SERIES: The Percussion Ensemble will perform at 8 p.m. in the Corner Playhouse.

Tuesday, March 26

STUDENT RECITAL SERIES: Jeffrey Brown, piano, will perform at 7 p.m. in Whitmore Recital Hall.

Wednesday, March 27

LECTURE AND RECITAL: Scott Tomlison, a doctoral student in music education, will present a lecture on American trumpet sonatas and concerti from the 1950s, and will perform

trumpet works by Stevens and Gianini.

Conferences

Saturday, March 23

AMBULATORY NURSING CONFERENCE: "Recognizing and Assessing Women Who are Victims of Violence" will be offered from 7:45 a.m.-noon at the Best Western Columbia Inn. For cost and registration information, call 882-0215.

Wednesday, March 27

GENETICS WORKSHOP: The Missouri Institute of Mental Health will present a two-day workshop on "Humanizing Genetic Testing: Clinical Applications of New DNA Technologies" from 6-9 p.m. today, and from 9 a.m. to 5:15 p.m. March 28 in Lecture Hall C, at the University of Missouri-Kansas City. For cost and registration information, call (314) 644-8803.

Courses

Saturday, March 23

CONTINUING PROFESSIONAL EDUCATION: "Exploring Telecommunications Via the Internet (IBM)" will be offered on March 23 and 30, April 13 and 20, from 9 a.m.-1 p.m. in 314 Hill Hall. For information about enrollment and costs, call 882-7403.

Sunday, March 24

CRAFT CLASSES: Handbuilding clay, throwing, lost-wax casting, jewelry fabrication,

stained glass, basketry, introduction to the camera, black and white photography and paper marbling classes will be offered beginning the week of March 24. For cost and registration information, call 882-2889 or stop by 203 Brady Commons.

Monday, March 25

CONTINUING PROFESSIONAL EDUCATION: "Microsoft Office Suite (IBM)" will be offered from 5 to 9 p.m. in 314 Hill Hall. For information, or to enroll, call 882-7403.

RECREATION COURSES: "Tae Kwon Do" will be offered from 5:30-6:30 p.m. Mondays and Tuesdays March 25-April 29. Cost: \$22. "Tae Kwon Do II" will be offered from 6:45-7:45 p.m. Mondays and Tuesdays March 25-April 29 in the Rothwell Mat Room. Cost: \$22. To register for either class, stop by 320 Student Recreation Center or call 882-2066.

Tuesday, March 26

RECREATION COURSE: "Water Exercise" will be offered from 6-6:50 p.m. or 9-9:50 p.m. Tuesdays and Thursdays March 26-April 30 at the Natatorium. Cost: \$22. To register, stop by 320 Student Recreation Center or call 882-2066.

Wednesday, March 27

RECREATION COURSE: "Weight Training" will be offered from 9:30-11 a.m. Saturdays and 7:30-8:30 p.m. Wednesdays March 27-May 4 in B-302 Student Recreation Center. Cost: \$30. To register, stop by 320 Student Recreation Center or call 882-2066.

Thursday, March 28

CONTINUING ENGINEERING EDUCATION COURSE: "Advanced Water Treatment" will be offered from 8 a.m.-4:45 p.m. on March 28 and from 8:30 a.m.-4:45 p.m. on March 29. Cost is \$255. To register, or for more information, call 882-7075.

Exhibits

BRADY COMMONS GALLERY: "Women in the Arts" will be on display March 18-28. A reception will be held from 4:30-6:30 p.m.

today. Brady Gallery, located in 203 Brady Commons, is open from 10 a.m.-5 p.m. weekdays.

ELLIS LIBRARY: "A Celebration of Women in History: Past and Present" is on display through March 30 in the first floor colonnade. Topics include "Women Who Dared," "Women and the Civil War," and "See History in a New Way."

Films

Friday, March 22

MSA/GPC FILM: *Immortal Beloved* will be shown at 7 and 9:30 p.m. in Ellis Auditorium. Cost: \$2 advance, \$2.50 at door.

Saturday, March 23

MSA/GPC FILM: See March 22 listing.

Wednesday, March 27

MSA/GPC FILM: *Bridge on the River Kwai* will be shown at 8 p.m. in Ellis Auditorium. Free with student ID.

Friday, March 29

MSA/GPC FILM: *The Incredibly True Adventure of Two Girls in Love* will be shown at 7 and 9:30 p.m. in Ellis Auditorium. Cost: \$2 advance, \$2.50 at door.

Lectures & Seminars

Thursday, March 21

CHEMICAL ENGINEERING SEMINAR: Dan Carney, chemical engineering graduate student, will make a presentation at 3:40 p.m. in Room W0010 Engineering Building East.
WOMEN'S HISTORY EVENT: Gabriele von Malsen-Tilborch, consul general of the Federal Republic of Germany will speak on "Germany Today -- With a View Toward Tomorrow" at 3:40 p.m. in Ellis Auditorium.

INTERNATIONAL CENTER LECTURE: Andrei Codrescu, poet, novelist and commentator, will present "Whose Woods are These? A Romanian Immigrant's Visions of America" at 7:30 p.m. in Allen Auditorium.



10 a.m. to 2 p.m.

Saturday, March 30

University Hospital's Main Lobby

Join Children's Hospital and KOMU-TV 8 at the Sixth Annual Kids' Day — a day of free health and safety activities for kids ages 2 to 10

- Free Screenings — Vision, asthma, hearing, growth and blood pressure screenings.
- Tours — Operating room, helicopter, ambulance, fire trucks and patrol car.
- Mini News Set — Videotape your child with KOMU TV-8 personalities (bring your tape) on the Kids' Day news set.
- Center Stage — Slim Goodbody musical health presentation, 10:15 a.m. and noon; Gus and Goldie, water safety fish, 11 a.m.; fire safety demonstration by Columbia Fire Department, 1 p.m.
- Activities — Rescue choking; face painting; nutrition activities; sun safety; operating room dress up (free surgical attire); activities to prepare for a doctor visit; wheelchair obstacle course; duck pond; animal safety and more.
- Low-cost bicycle helmets — Safety-approved bike helmets for \$10.
- Prize registration — Eight bicycles or tricycles, plus a safety-approved bike helmet; four sessions of classes from Machers Swim School; eight sessions of swimming classes and four swimming passes from Columbia Parks and Recreation (need not be present to win). All kids will receive a free sports bottle.
- Characters — Mingle with your favorite mascots and characters including Bugs Bunny™ and Daffy Duck™.

Kids' Day will be held rain or shine. Free refreshments available. Free parking in hospital garage or surrounding lots. Children must be accompanied by an adult. Call 882-6565 for more information.

Free immunizations

Protect your child against deadly diseases with free immunizations provided by the Columbia/Boone County Health Department at Kids' Day. Bring in your child's immunization card and the Health Department can help you determine if it's up to date. Each child who receives an immunization or has their records checked will receive a special gift pack. Call 882-6565 for more information.

Shuttle to Animal Health Fair

Ride a free shuttle from University Hospital to the College of Veterinary Medicine's Animal Health Fair. Bring your ruffled bears for repair by MU's teddy bear surgeons. Enjoy the cow with a "window in its stomach," a petting zoo, wagon rides, dairy milking, exotic animals and more.



Children's Hospital
at University Hospital and Clinics Columbia, Missouri

KOMU-TV 8
Columbia-Jefferson City

Friday, March 22

CHEMISTRY COLLOQUIUM: Lawrence Marnet from Vanderbilt University will present "DNA Damage by the Endogenous Carcinogen Malondialdehyde: Anatomy of a Mutation" at 3:40 p.m. in 103 Schlundt Hall.

ENTOMOLOGY SEMINAR: Lowell R. Nault from the Ohio Agriculture Research and Development Center will present "The Corn Leafhopper: The Making of an Insect Pest" at 2:40 p.m. in Room 2-7 Agriculture Building.

FORESTRY SEMINAR: Keith Grabner, graduate student, will present "Validation of BEHAVE Fire Behavior Predictions in Established Savannas" at 2:40 p.m. in Room 2-3 Agriculture Building.

Monday, March 25

SPECIAL LIBRARIES LECTURE: Sylvia Piggott, president-elect of the Special Libraries Association, will present "The Future of Special Libraries" at 11:40 a.m. in 106 Stewart Hall.

SOIL AND WATER RESOURCES

SEMINAR: Dave Hammer, associate professor of soil and atmospheric science, will present "New Paradigms in Soil General" at 3:40 p.m. in 133 Mumford Hall.

Tuesday, March 26

BIOLOGICAL SCIENCES SEMINAR: Terry Walters from the University of Texas-Houston will present "Did Mechanisms of Memory Evolve from Neuronal Reactions to Injury?" at 3:40 p.m. in 18 Tucker Hall.

PAIN LECTURES IN RELIGION: Klaus Nohlen, architect for the Pergamon excavations in Turkey, will present "Reconstructing the Past: The Temple of Trajan at Pergamon" at 5 p.m. in 106 Pickard Hall. A reception will be held at 4:30 p.m.

Wednesday, March 27

MIDDAY GALLERY EVENT: Brooke Cameron, professor of art, will speak on "Contemporary Chinese Art" at 12:15 p.m. in Pickard Hall.

PHYSIOLOGY SEMINAR: David Gadsby

from Rockefeller University will speak on "Regulation of CFTR Gating by Phosphorylation" at 2:40 p.m. in M437 Medical Sciences Building. Refreshments will be served at 2:15 p.m.

Thursday, March 28

CAMPUS WRITING PROGRAM: Mark Ryan, associate professor of natural resources, will present "Troubleshooting The Grading Sheet" from 11:45-12:45 p.m. in 325 General Classroom Building.

CHEMICAL ENGINEERING SEMINAR: Chau-Kuang Liao, chemical engineering doctoral student, will present "Kinetic Analysis of Polyvinylbutral Thermal Degradation Using TGA-FTIR" at 3:40 p.m. in Room W0010 Engineering Building East.

Friday, March 29

ART & ARCHAEOLOGY LECTURE: Tomi Prawl, architectural historian, will present "E.J. Eckel: An Architect of the Ecole des Beaux-Arts and His Career in Missouri" at 6 p.m. in Pickard Hall.

ENTOMOLOGY SEMINAR: Christopher Hempel, entomology graduate student, will present "The Role of Parent-Offspring Conflict in Eusocial Hymenopteran Behavior" at 2:40 p.m. in Room 2-7 Agriculture Building.

GEOLOGICAL SCIENCES COLLOQUIUM: Kent Nielson from the University of Texas-Dallas will present "Proterozoic Geology of West Texas" at 3:40 p.m. in 108 Geological Sciences Building.

FORESTRY SEMINAR: Keith Colbert, graduate student, will present "Height-Diameter Equations for Midwestern Riparian Species" at 2:40 p.m. in Room 2-3 Agriculture Building.

Meetings

Thursday, March 21

TOASTMASTERS: Will meet from 4 to 5 p.m. in Room 1W19 at University Hospital. For information, call Vickie Stokes at 882-2239.

Thursday, March 28

FACULTY COUNCIL: Will meet at 3:40 p.m. in S110 Memorial Union.
STAFF ADVISORY COUNCIL: Will meet at 1:15 p.m. in 235 Brady Commons.

Special Events

Thursday, March 21

HEARNES CENTER EVENT: Ice Capades' "Cinderella" will be held March 21 and 22 at 7 p.m., March 23 at 1:30 and 7 p.m., and March 24 at 1:30 p.m. in the Hearn Center. For ticket information, call 884-PAWS.

WOMEN'S CENTER EVENT: The Women's Art Show reception will be held from 4:30-6:30 p.m. in 229 Brady Commons and the Brady Gallery.

Tuesday, March 26

DIABETES ALERT DAY: Diabetes tests will be offered from 1-5:30 p.m. at the Health Information Center in Columbia Mall. Come for the test approximately two hours after eating a well-balanced meal. For more information, call 882-6565. Diabetes Support Group will meet March 28 at the Cosmopolitan International Diabetes

Center at University Hospital and Clinics. For more information, call 882-6565.

WOMEN'S CENTER EVENT: Katherine Miranti, certified massage therapist, will present "Boulders in Your Shoulder? Dawgs Barkin?" at noon in 229 Brady Commons.

Wednesday, March 27

WOMEN'S CENTER EVENT: "Stress Management" will be held at 7 p.m. in 229 Brady Commons.

Thursday, March 28

WOMEN'S CENTER EVENT: "Beyond Kinsey: Sexuality in the '90s" will be held at 4 p.m. in 229 Brady Commons.

Friday, March 29

SINCLAIR SCHOOL OF NURSING SIXTH ANNUAL BANQUET: Event will be held at Reynolds Alumni Center. The reception begins at 6 p.m. followed by dinner at 7 p.m. and an awards presentation honoring students, faculty and alumni. For information, call 882-0252.

Still more from your EAP:

Women in Transition Group

Beginning: March 27, 1996, for six weeks
Time: Wednesday, 5:30 - 7:00 p.m.
Location: Parker Hall

Group is open to all female staff and faculty, enrollment is limited and participants are encouraged to sign up early. Designed to offer support, information and guidance to women experiencing career related, personal, marital and other major changes in their lives. Assessment interview is required. There is no cost for this group.

To enroll, call
Employee Assistance Program
882-6701

CLASSIFIEDS

SERVICES

COMPUTER TAX PREPARATION. Your taxes prepared professionally using laser forms. Over 11 years' experience. Electronic filing available. Reasonable rates, confidentiality assured. Call Kellogg Business Services at 445-7557.

PhD in English with 20 years' college teaching, experience in editing, will edit books, proposals, dissertations, articles, major papers or presentations. Telephone (573) 445-6690 between 11-3, M,W,F.

TAX RETURN PREPARATION. Federal, state, multistate. Clients in 26 states and overseas; 26 years' experience with higher education returns. Call 445-6530 for confidential appointment. New clients - first hour free with this ad.

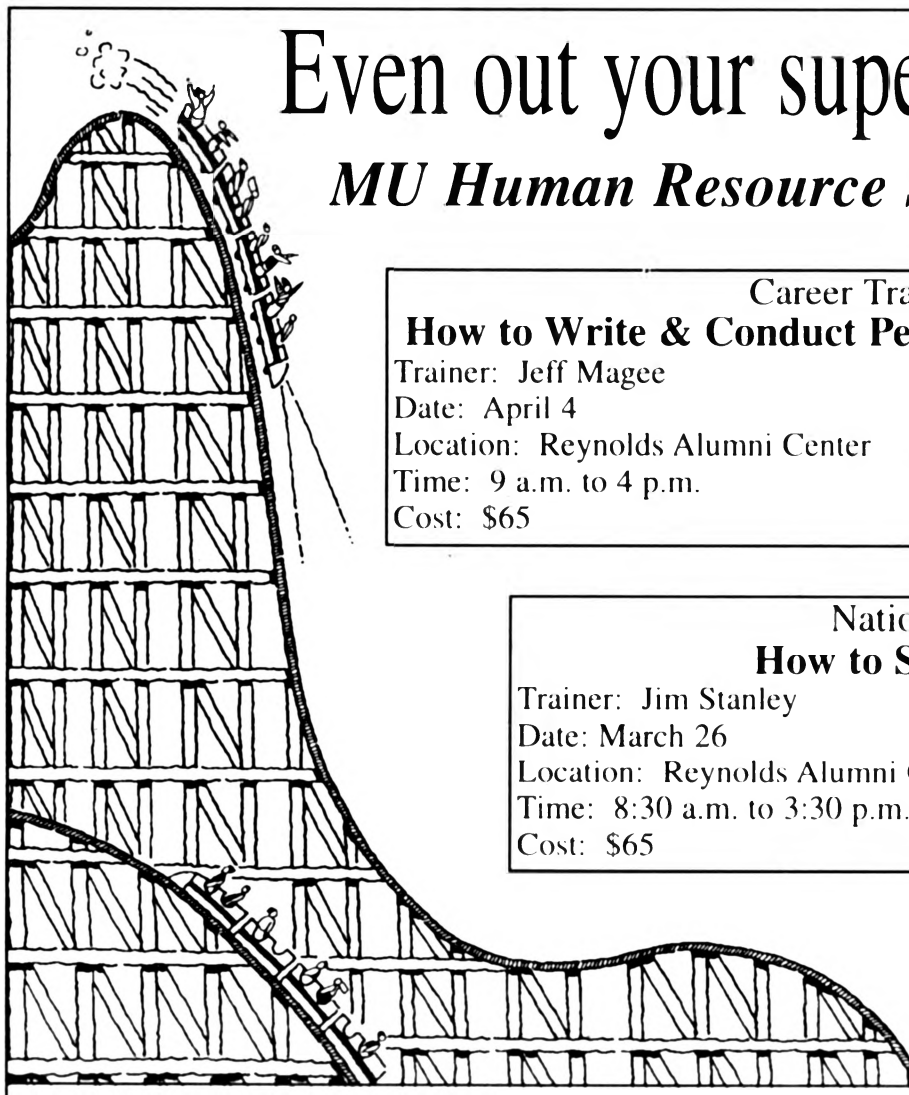
FOR SALE

Charming brick home in "Old Southwest." Three-bedroom, one and three-quarter bath, formal dining, study, family room, updated kitchen, Nine-foot ceilings, hardwood floors, ceiling fans, easy walk to MU, \$117,000, 442-5093.

FOR RENT

Lovely country home on wooded acreage for professionals/academics. Two-story colonial: four bedrooms, two baths, 24-foot living room, family room, dining room. Twenty minutes to town. Leave message 443-3772.

The Classified Advertising Section is open only to faculty and staff members and retirees. A home phone number is required in all classified ads. Make your check



Even out your supervisory style!

MU Human Resource Services presents:

Career Track

How to Write & Conduct Performance Appraisals

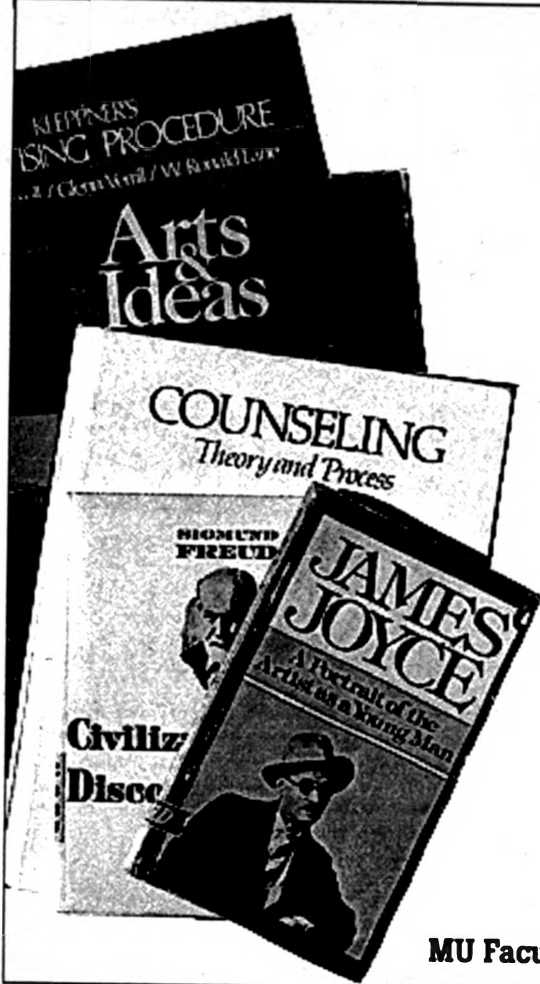
Trainer: Jeff Magee
Date: April 4
Location: Reynolds Alumni Center
Time: 9 a.m. to 4 p.m.
Cost: \$65

National Seminars

How to Supervise People

Trainer: Jim Stanley
Date: March 26
Location: Reynolds Alumni Center
Time: 8:30 a.m. to 3:30 p.m.
Cost: \$65

Hear the best at half the cost of attending the same seminar at local hotels.



We're more than a "book" store.

At University Bookstore we take pride in having one of the best textbook and general interest book departments in town. Stop by today and see what else we have to offer.

Shop for cards, Clinique, sportswear, balloons, music CDs, videos phones/answering machines, art supplies and more! All profits from UBS stay on campus to support MU student services, facilities and programming.

UNIVERSITY BOOKSTORE 

University owned
and operated
since 1899.



Main Level Brady Commons
882-7611 TDD: 882-3985
M-Thurs: 8-7, F: 8-5, Sat: 10-5

UNIV. STORES ON THE WEB:
www.ustores.missouri.edu



MU Faculty/Staff/Retirees get 10% off almost everything sold at UBS!

Maximize your effectiveness

A series of seminars on continuous quality improvement is being offered through Human Resource Services to all full-time benefit-eligible administrative staff and faculty members. Joleen Finders, coordinator of training and development, says employees received a pamphlet in mid-March that described the seminars.

Continuous quality improvement is both a philosophy of management and a set of concepts, principles and tools that organization can apply to continuously improve its operations to meet the needs of its customers. Chancellor Kiesler and his administrative staff have boosted the momentum in this area by seeing that faculty and staff become educated in the continuous improvement process.

"Our sessions focus just on this campus," Finders says. The sessions are free, and employees are not required to take them on vacation or personal time for the courses which are filled on a first-come, first-served basis. To register, call 882-2603.

Campus Computing

Short Courses

The following non-credit short courses are free of charge and open to MU faculty, staff and graduate students unless otherwise noted. Participants may be enrolled in no more than two courses in one month. Registration is required and is done on a first-come, first-served basis. To enroll, please call 882-6006. NOTE: When an ID is required for a class, participants should obtain the ID prior to registering for that class (call the Help Desk at 882-5000 for ID information). More information about these classes is included in the Campus Computing Training Groups Web pages (see below). If you cannot connect to the World Wide Web, or if you need help doing so, please call 882-6006 for more information.

For the complete Winter Semester Short Course schedule including class times, see the following URL: <http://www.missouri.edu/~cctrain/WS96web.html>
For a complete listing of Course descriptions, see the following URL: <http://www.missouri.edu/~cctrain/course.html>

INTRODUCTION TO MICROSOFT EXCEL 5.0 MARCH 25

Prerequisites: Foundations of Computers course or knowledge of file management with Macintosh or Windows, and mouse skills.

INTRODUCTION TO WINDOWS (2 DAYS) PART I—MARCH 25 PART II—APRIL 1

Prerequisites: None, other than basic computer applications experience and a desire to learn.

HANDS-ON INTERNET: MIZZOU1 MARCH 25 OR MARCH 28

Prerequisites: You must have a MIZZOU1 ID and password prior to registering for the class -- a cc:Mail account will not be sufficient! Please bring a formatted 3.5" diskette to class.

PRELUDE TO PROGRAMMING - PERL MARCH 25

Prerequisites: Computer applications experience such as word-processing.

WWW WORKSHOP: INTRO TO WEB PAGE AUTHORING MARCH 26

Prerequisites: A SHOWME ID is required prior to registering for the class; plus experience with Web browsers.

GRAPHING IN MICROSOFT EXCEL 5.0 MARCH 26

Prerequisites: Introduction to Excel or experience with Excel spreadsheets.

INTRODUCTION TO PINEMAIL MARCH 26

Prerequisites: A SHOWME ID is required prior to registering for the class.

CREATING FORMS ON THE WEB USING PERL MARCH 26

Prerequisites: Introduction to Data Manipulation with Perl and Introduction to Web Page Authoring.

INTRODUCTION TO MICROSOFT WORD 6.0 MARCH 27

Prerequisites: Foundations of Computers course or knowledge of file management with Macintosh or Windows, and mouse skills.

HANDS-ON INTERNET: CLIENTS ONLY MARCH 28

Prerequisites: Access to Internet clients such as WinGopher or MacGopher, Fetch or WinFTP, Netscape, etc. AMIZZOU1 or SHOWME account is not required. Please bring a formatted 3.5" diskette to class.

HANDS-ON INTERNET: SHOWME MARCH 28

Prerequisites: You must have a SHOWME ID and password prior to registration for the class -- a cc:Mail account will not be sufficient! Please bring a formatted 3.5" diskette to class.

FOCUS ON FACULTY COURSES

INTRODUCTION TO ALDUS PERSUASION - MACINTOSH MARCH 29

Prerequisites: Foundations of Computers course or knowledge of file management with Macintosh, and mouse skills.

WWW WORKSHOP: INTRO TO WEB PAGE AUTHORING APRIL 5

Prerequisites: A SHOWME ID is required prior to registering for the class; plus experience with Web browsers.

MIZZOU
WEEKLY

University Libraries
University of Missouri

Digitization Information Page

Local identifier MizzouWeekly(print)

Source information

Format Newspaper
Content type Text with images
Source ID Duplicate copies University Archives weeded out
Notes

Capture information

Date captured July-December, 2022
Scanner manufacturer Plustek OpticBook
Scanner model A300 Plus
Scanning system software Book Pavilion
Optical resolution 600 dpi
Color settings 8 bit grayscale for majority of pages;
 24 bit color for color illustrations/portraits/photographs
File types tiff
Notes

Derivatives - Access copy

Compression Tiff: LZW compression
Editing software Adobe Photoshop 2022
Resolution 600 dpi
Color same as captured
File types pdf created from tiffs
Notes Images cropped, straightened, and brightened.