

# MIZZOU

## WEEKLY

University of Missouri-Columbia Oct. 17, 1996

### INSIDE THE WEEKLY

Page 3: Faculty discuss English proficiency review for instructors

Page 6: A campuswide group is studying Mizzou's athletic programs

## Global connections

*MU's new Council on International Initiatives will focus on campus, state opportunities abroad.*

When Chancellor Richard Wallace led a delegation of senior faculty and administrators to Korea last week, it underscored the longstanding ties between MU and South Korea. Mizzou has nearly 1,000 alumni living in Korea, and many are top leaders in government, business, education and journalism.

But the mission to Korea also highlighted MU's leadership in international education. Faculty and students in every corner of campus have global ties, and those international connections are many. Just to skim the surface:

The School of Journalism is leading the way in introducing the free press to formerly communist countries of Eastern Europe. Mizzou's agricultural researchers are helping countries in South America and Africa build their agriculture base. Education faculty and students are working with Third World countries to promote literacy and technological education. MU health and mental health experts are helping children scarred by the warfare in Bosnia.

This summer a new Council on International Initiatives got to work developing a broad action plan that will address MU's international engagement over the next five to 10 years. Provost Ed Sheridan organized the council and appointed representatives from each academic division on campus.

The council's mission, Sheridan says, is to integrate an international dimension into the University's teaching, research and outreach programs. In addition, MU's international efforts can act as a catalyst for the entire state, forging alliances with other Missouri universities and with the public sector.

One of many potential outcomes, Sheridan notes, is to expand opportunities for undergraduate students to study abroad. "We intend to enable any student who wishes to study in another culture to do so at very little expense to the student."

"The provost's appointment of the Council on International Initiatives indicates that international activi-

ties are becoming increasingly important," says Kitty Dickerson, professor and chair of textile and apparel management. Dickerson, who is chair of the international council, has wide ranging international experience, as do all the members.

"The council gives heightened visibility to MU's international agenda," Dickerson says. "It will provide leadership and activities that bring our already significant international efforts into a more focused, more coordinated international agenda for the campus."

Sheridan has asked the council to explore a number of broad areas, including ways to:

- facilitate international collaborative research for faculty and graduate students
- expand study abroad opportunities for MU undergraduate students
- enhance Missouri's international competitiveness
- assess MU's role in international technical assistance
- develop policies to support offering MU courses and degrees abroad

In addition, council members have agreed to look at ways MU can strengthen its international curriculum for students on campus and will search for resources to support international initiatives, both at MU and off-campus. The council also will study ways to link programs between

See Initiatives, Page 2

## Memorial performance

*The curtain goes up on theater department's benefit reception for honored alumna.*

When MU's theater department takes the stage Oct. 24 for a performance of *West Side Story*, the actors will be remembering more than just their lines. That night, they will be remembering Terry Perkins, a 1980 grad-

uate of the theater program. A benefit reception preceding the show will help fund a scholarship in her memory.

Perkins was 39 years old when she died of breast cancer in May. Friends say that she made people laugh from the first

day she stepped on stage as a 7-year-old. "Comedy is what she did best; she was very funny," says Mark Kelty, a doctoral student in theatre and Perkins' former friend and classmate.

Maybe Shakespeare had it right. All the world's a stage, at least it was for Perkins. Friends remember her impromptu ballet performances in the aisles of grocery stores — doing pirouettes with grocery carts and little tiptoe leaps as she grabbed groceries from the shelves.

Kelty recalls the time she was meeting a friend at the airport. Her friend walked off the plane carrying a tennis racket, and before long Perkins had the entire waiting room convinced that he was a famous tennis pro. "She was sort of a Robin Williams character; she was constantly going off on an imitation of somebody," Kelty says. "She was always onstage; she was wildly creative. You couldn't stop laughing at the things she came up with."

A native of Joplin, Mo., Perkins first came to MU in 1977. She played a number of lead roles during her years at Mizzou, and one of her former professors says Perkins' ability to play diverse roles was key to her success at MU and later in Minnesota.

"One of the reasons she was such a valuable actress is that she could traverse the role from sophistication to physical farce so easily. She could look like the queen of Fifth Avenue and act trashy all at the same time," says Weldon Durham, professor of theater, who directed Perkins as Arsinoë in *The Misanthrope*.

Perkins stayed in Columbia for a year after graduating from MU. She worked full-time for the United Way and she served on Columbia's Youth Advisory Commission before receiving a fellow-

ship to attend Mankato State University. In 1984, she became the first woman to receive a master's of fine arts from that university. While attending Mankato, Perkins also received the Irene Ryan Award through the American College Theatre Festival in 1983. As part of that award, she performed at the John F. Kennedy Center for the Performing Arts in Washington D.C. "She wowed the entire state of Minnesota," says Miller.

Perkins worked her way to a successful career on the stage, screen and television in the Minneapolis/St. Paul area before her death. Her signature role was Sister Robert Anne in Troupe America's musical, *Nunsense*. She was so well known for that role that when she went to the hospital for cancer treatments, the nurses would be so mesmerized by seeing a "real star" they would sometimes forget to treat her, Miller says.

Perkins mesmerized many, especially during her years at MU. She was the kind of person who could walk into a group and immediately become the center of attention, but not in a selfish way. And she made everyone else seem funny, says Miller, professor of theater. Miller is directing this fall's production of *West Side Story*.

The theater department is establishing a Terry R. Perkins Memorial Scholarship Fund. The scholarship is specifically for comedic actresses because these performers are rare, Miller says. Those who wish to contribute to the scholarship can send donations to the theater department.

The benefit reception will be held at 7 p.m. Oct. 24 in the George Caleb Bingham Gallery in the Fine Arts Building. Tickets for \$25 and may be reserved by calling 882-PLAY.



Photo courtesy of the Theater department

Theater alumna Terry Perkins, left, had Mizzou audiences rolling in the aisles during her student days here. Perkins died this spring from breast cancer, and the theater department is remembering her with a scholarship.

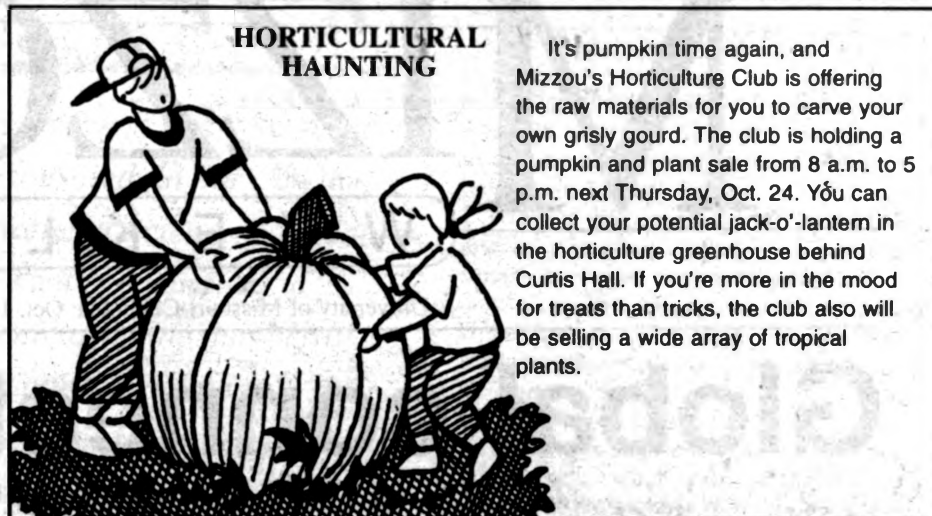
**HIGH FLYING ALUMNI**

NASA astronaut Linda Godwin and astrophysicist Gerald Fishman, both graduates of Mizzou's physics program, will visit campus as part of Arts and Science Leaders Week. While in Columbia, the two will speak to MU classes and at area schools during their three-day stay. They will present a public lecture at 7 p.m. tonight in Jesse Auditorium.

Godwin, a native of Jackson, Mo., joined NASA in 1980 and became an astronaut in 1986. She has logged more than 633 hours in space, including a six-hour spacewalk earlier this year, and has flown on three space shuttle missions. During her first space shuttle mission in 1991, she helped deploy

the Compton Gamma Ray Observatory, which was designed with help from her fellow alumnus Fishman. Her husband, Steven Nagel, commanded that mission. Nagel will accompany Godwin on her visit to Columbia.

Fishman, a native of St. Louis, is head of the gamma-ray astronomy group in NASA's Space Science Laboratory at the Marshall Space Flight Center. His primary research is in the fields of gamma-ray astronomy, nuclear astrophysics and background radiation in space.



It's pumpkin time again, and Mizzou's Horticulture Club is offering the raw materials for you to carve your own grisly gourd. The club is holding a pumpkin and plant sale from 8 a.m. to 5 p.m. next Thursday, Oct. 24. You can collect your potential jack-o'-lantern in the horticulture greenhouse behind Curtis Hall. If you're more in the mood for treats than tricks, the club also will be selling a wide array of tropical plants.

**Parking & Transportation Services**

Turner Avenue Garage  
Level 2  
882-4568

**PARKING FOR HOMECOMING FOOTBALL GAME OCT. 26, 1996**  
\$5 temporary permits for the Maryland Avenue Garage can be purchased at Parking & Transportation Services, Turner Avenue Garage, Level 2.

**Initiatives**

From Page 1

the University, state and local government, the private sector and international constituencies.

"The council represents the first time such a group has been organized on this campus to chart MU's future international efforts," says John Heyl, a council member and director of MU's International Center. "I truly see it as an agenda-setting body."

Mike Nolan, a council member and director of International Agriculture Programs, says there are so many international activities going on across campus that they defy management. But managing them is not the purpose of this group, Nolan says.

"Our goal is to better acquaint ourselves with what's going on now. Working together we can achieve greater synergy than if people are off doing their own things."

The group's impact is likely to be felt beyond the campus. One of the provost's charges to the council is to help MU be a partner with government and private sectors to enhance Missouri's international competitiveness. That thrust becomes even more important as electronic communications revolutionize the global business world.

It used to be that only large companies had many international business opportunities, says council member Ken Evans, professor of marketing. "Even at their inception, many businesses today are born global."

And with a global economy, giving our students an international perspective can only enhance their competitiveness when they graduate. "If we can expose the University, as well as other universities within the state, to some of the opportunities available to students to study abroad, at least we'll be taking the first step," Evans says.

One way that MU will reach out to the rest of the state is with a statewide conference on international education, scheduled for next March.

Through the conference, faculty from MU and other UM System campuses will focus on the changing global environment and the potential for alliances among diverse groups to further internationalize the undergraduate experience on Missouri campuses.

**Council on International Initiatives**

The following faculty are members of a committee that is spearheading efforts to internationalize the education experience at Mizzou:

■ **Agriculture** — Mike Nolan, professor of rural sociology and director of international agriculture programs

■ **Business and Public Administration** — Kenneth Evans, professor and chair of marketing

■ **Engineering** — Zhen Chen, assistant professor of civil engineering and director of international engineering programs

■ **Journalism** — Byron Scott, professor of journalism and coordinator of international journalism programs

■ **Library and Informational Science** — Bryce Allen, associate professor of library and informational science

■ **Nursing** — Verna Rhodes, associate professor emeritus of nursing

■ **Arts and Science** — Robert Bender, professor of English and director of special degree programs

■ **Education** — Mike Dyrenfurth, professor of practical and vocational-technical education

■ **Human Environmental Sciences** — Kitty Dickerson, professor and chair of textile and apparel management

■ **Law** — Bill Fisch, professor of law

■ **Medicine** — Leonard Forte, professor of pharmacology

■ **Veterinary Medicine** — James Thorne, associate professor of veterinary pathobiology

■ **Faculty Council** — Gary Allee, professor of animal science

Robin Remington, professor of political science

■ **Ex Officio** — John Heyl, director of the International Center

**Blair**



**Fitness Center**

**NOW OPEN!!**

Hours: Monday - Thursday 2pm - 11pm

Friday - Sunday: 2pm - 8pm

Valid Student or SRC ID Required

Department of Recreational Services

320 SRC  
882-2066



## Faculty discuss English proficiency review for all MU instructors

Mizzou's Faculty Council approved a resolution Oct. 10 recommending that evaluations for all teaching faculty at MU include a question about the faculty member's ability to communicate effectively in English. The proposal now will be forwarded to Provost Ed Sheridan and to the UM System president's office.

The resolution calls for department chairs to report promptly to their divisional deans whenever "a significant number of students" indicate that an instructor's English proficiency is a problem in learning.

The resolution also calls for the UM System to provide the resources to enhance the performance of the identified instructors. For more than 10 years, the University has had a policy in place that screens the English proficiency of international teaching assistants, reviews their performance in the classroom and provides workshops to enhance their teaching.

The proposal is modeled after a similar resolution passed by the UM System Intercampus Faculty Council. The original version, passed during a July IFC retreat, called for the reports to be triggered whenever the lesser of five students or 10 percent of students in a class complain about a professor's English proficiency. At a September IFC meeting, that wording was revised so that complaints by a "significant number of students" initiate the review.

Several council members questioned how individual department chairs would

determine when the threshold has been reached. The resolution's wording "asks for the department chair to use good judgment," said Dennis Sentilles, council chair and professor of mathematics.

Other council members questioned whether students could manipulate the proposed policy. "My concern is students who would be inclined to blame poor performance on an instructor who isn't a native speaker, but is still fluent," said Jere Francis, professor of accountancy. "It opens the possibility of dumping on the instructor."

Other faculty raised concerns that some MU students may not distinguish between an instructor's English proficiency and his or her dialect or accent. "I'm really not comfortable with a resolution that doesn't make a distinction between proficiency and other nuances," said Robin Remington, professor of political science.

"All this does is provide a red flag to the (department) chair. It may not be a problem," said Mike Porter, council vice chair and associate professor of communications. "The chair can then take the data and say, 'I'm sorry, I don't agree.' We need to demonstrate that we as a faculty are doing something about the issue."

Sentilles agreed. "We need to deal with it professionally and we need to do it in our own terms," he said.

The Faculty Council also discussed a proposal to place the minutes of council meetings on the World Wide Web. Don

*Faculty Council approved a resolution Oct. 10 recommending that evaluations for all teaching faculty at MU include a question about the faculty member's ability to communicate effectively in English. The resolution calls for department chairs to report promptly to their divisional deans whenever "a significant number of students" indicate that an instructor's English proficiency is a problem in learning.*

Russ Zguta, professor of history, questioned what impact that move would have on *Faculty Forum*. Zguta pointed out that a small percentage of faculty don't have access to the Internet, and that *Faculty Forum* is sent to all other public institutions in the state, as well as to retirees, student leaders, curators and the media. "This does erode some faculty visibility and independence," Zguta said.

Ranly stressed that the proposal did not address eliminating *Faculty Forum*, but would simply allow faculty to access council minutes more quickly in an electronic format.

"I think *Faculty Forum* needs to change with the times," said Al Hahn, professor of veterinary medicine and surgery. "We need to have a discussion of that."

In other action Sentilles told council members that the final report of the provost's committee on promotion and tenure review has been installed on the World Wide Web. There is a direct link to the full text of the report on the MU home page.



**Support the  
United Way**

Ranly, professor of journalism and editor of the council's publication, *Faculty Forum*, said the move would get that information out to faculty in a more timely manner. Ranly also suggested establishing a computer listserv so faculty could initiate electronic discussions of issues.

## PENTEL BK70V

*Fine point, Ballpoint pen writes in*

**ELECTRIFYING**

**"VIOLET" Ink**

**STK #0327**

**\$6.26/Dozen**



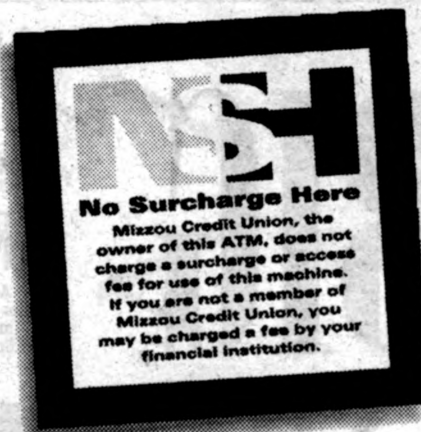
**general STORES**

**882-6906**

*"Put it in writing...so everybody sees it"*

Your convenience *should not* come at a price!

That's why **MIZZOU CREDIT UNION** continues to place more ATMs near your home & work and not charge our members *any fees or surcharges*.



**LOOK FOR THIS LOGO ON CREDIT UNION ATMs NATIONWIDE TO AVOID ATM SURCHARGES**

Ask for the  
*no*  
**surcharge**  
ATMs nearest  
you!



**MIZZOU CREDIT UNION** ...meeting our members' needs  
Faculty, staff, retirees, students and their families are eligible to join. Call for membership eligibility requirements today.

Your Accounts Federally Insured By **NCUA**

Monday - Thursday	7:30 a.m. - 5:30 p.m.
Friday	7:30 a.m. - 6:00 p.m.
Saturday	9:00 a.m. - 12:30 p.m.

1st & Broadway • PO Box 1795 • Columbia, Mo. 65205-1795  
Phone: 874-1477 • (800)451-1477 • Fax: 874-1300

# CALENDAR

Send calendar items by Campus Mail to *Mizzou Weekly Calendar*, 407 Reynolds Center, by noon Thursday the week before publication. Events are free and open to the public unless otherwise noted.

## Concerts & Plays

### Thursday, October 17

**THEATER SERIES:** The Department of Theatre will present "West Side Story" Oct. 17-19 and 23-27 at the Rhynsburger Theatre. For time and cost call 882-PLAY.

### Sunday, October 20

**JAZZ CONCERT:** Von Freeman Saxophone Quartet will perform at 7 p.m. in Whitmore Recital Hall. Call the Music Department at 882-2604 for cost.

### Friday, October 25

**FACULTY RECITAL:** Faculty Piano Quartet will perform at 8 p.m. in Whitmore Recital Hall.

## Exhibits

### BINGHAM GALLERY:

"Baskets: Structuring Space, Empty and Enclosed" will be on display through Nov. 1 in the Fine Arts Building.

### BRADY COMMONS GALLERY:

Cyber Arts '96 will be on display through Oct. 24 in 203 Brady Commons.

### ROGERS GALLERY:

"Territories of Secrets- Images in Water-Color Paintings, Photographs, and Prose Poetry" by Ruth Brent, professor and chair of environmental design, is on display through Oct. 31 in 148 Stanley Hall.

### WESTERN HISTORICAL MANUSCRIPT

**COLLECTION:** "Landmark Presidential Elections" featuring political materials from the collection will be on display through Nov. 8 in 23 Ellis Library.

## MSA/GPC Films

### Friday, October 18

*Ma Saison Preferee* will be shown at 7 and

9:30 p.m. in Ellis Auditorium. Cost: \$2 advance, \$2.50 at door.

### Saturday, October 19

*Ma Saison Preferee* will be shown at 7 and 9:30 p.m. in Ellis Auditorium. Cost: \$2 advance, \$2.50 at door.

### Monday, October 21

*The White Balloon* will be shown at 7 and 9:30 p.m. in Ellis Auditorium. Cost: \$1.50.

## Lectures & Seminars

### Thursday, October 17

#### TRAINING AND DEVELOPMENT

**SEMINAR:** "What is CQI?" will be offered from 8 a.m.-noon in S203 Memorial Union. To enroll call 882-2603.

#### NOEL GIST INTERNATIONAL AFFAIRS

**LUNCHEON SEMINAR:** Brown bag lunch event will feature David O'Brian, Valeri Patsiorkovski and Larry Dursham speaking on "Economic and Psychological Adaptation of Russian Peasant Households" at noon in S204 Memorial Union.

#### CHEMICAL ENGINEERING SEMINAR:

Tom Bechtel will present "Optimal Regulatory Control of a Nonisothermal CSTR" at 3:40 p.m. in W0009 Engineering Building East.

#### NUTRITIONAL SCIENCES RESEARCH

**SEMINAR:** Albert Sun, professor of pharmacology, will present "Alcohol-Induced Oxidative Stress and Tissue Injury" at 3:40 p.m. in 103 Animal Science Research Center. Refreshments are provided at 3:20 p.m.

#### UNIVERSITY LECTURE:

Cynthia Enloe, professor of government at Clark University in Massachusetts, will present "Can Feminism Smooth the Way for Democracy?" at 7:30 p.m. in Columns I at the Reynolds Alumni Center. A reception will follow.

### Friday, October 18

#### MICROBEAM ANALYSIS AND

**MICROSCOPY MEETING:** A joint meeting of the Microbeam Analysis Society and the Central States Microscopy Society will be held from 8:30 a.m. to 3 p.m. in Memorial Union Auditorium. Dale Newbury from the National Institute of Standards and Technology will present "Lies, Damned Lies and Standardless Analysis" at 10:30 a.m.

#### TRAINING AND DEVELOPMENT

**SEMINAR:** Retha Nichols, coordinator of the tax deferred annuity program, will present "Tax Deferred Annuities" from 9-11 a.m. in 146 Heinkel. To enroll, call 882-2603.

#### LUNCHTIME CONVERSATIONS ABOUT

**WRITING:** Jo Ann Vogt of the Campus Writing Program will present "Learning As We Go: Tips for Making Grading Less Time-Consuming and More Effective" from 11:45 a.m.-12:45 p.m. in 325 GCB. For information, call 882-4881.

#### DISTANCE LEARNING DESIGN

**SATELLITE PROGRAM:** Tony Grasha, professor of psychology at the University of Cincinnati, will present "Teaching With Style: Enhancing Learning by Understanding Teaching and Learning Styles" from noon-2 p.m. in Ketcham Auditorium.

#### MUSEUM LECTURE:

Scott Nelson, originator of "Art of the Eye: An Exhibition on Vision" which is on display at the Museum of Art and Archaeology, will speak on "Art of the Eye" at 5:45 p.m. in Pickard Hall.

### Monday, October 21

#### BIOCHEMISTRY SEMINAR:

Ken Gruys, from Monsanto Corp., will present "Metabolic Engineering" at 3:40 in 50 Chemistry Building.

#### SOIL AND WATER RESOURCES

**SEMINAR:** Dick Otto and Christine Mayer from the Sponsored Programs office, will present "Grant Management and Proposal Writing" at 3:40 p.m. in 133 Mumford Hall.

### Tuesday, October 22

#### TRAINING AND DEVELOPMENT

**SEMINAR:** "What is CQI?" will be offered from 8 a.m.-noon in S203 Memorial Union. To enroll, call 882-2603.

### Wednesday October 23

**MIDDAY GALLERY EVENT:** Michael O'Brien, director of the Museum of

Anthropology, will present "Southeastern Missouri on the Eve of DeSoto" at 12:15 p.m. in the Museum of Art and Archaeology in Pickard Hall.

**PHYSIOLOGY SEMINAR:** Elise Gomez-Sanchez, associate professor of medicine, will present "Central Hypertensive Effect of Aldosterone: Update" at 2:40 p.m. in S261 Medical Sciences Building. Refreshments will be served at 2:20 p.m.

**WOMEN'S CENTER EVENT:** Susan Groshong, training coordinator with Campus Dining Services, will present "Let Them Eat Cake" at 4 p.m. in 229 Brady Commons.

**ECOLOGY, EVOLUTION AND BEHAVIOR SEMINAR:** Ted Garland from the University of Wisconsin will present "Artificial Selection for Voluntary Activity Levels in House Mice: A Study in Evolutionary Physiology" at 7:30 p.m. in 106 Lefevre.

### Thursday, October 24

#### TRAINING AND DEVELOPMENT

**SEMINAR:** Bonnie Arnold, retirement consultant, will speak on retirement planning from 9:30 a.m.-4 p.m. in 146 Heinkel. To enroll, call 882-2603.

#### NOEL GIST INTERNATIONAL AFFAIRS

**LUNCHEON SEMINAR:** Brown bag lunch event will feature Glen Pierce presenting "Italian Politics, 1996" at noon in S204 Memorial Union.

#### PRESERVING FAMILY COLLECTIONS

**WORKSHOP:** Jim Downey, conservator, Legacy Art and Book Works, Inc., will speak on preserving books and magazines from 12:30-1:30 p.m.; Claudia Powell, with the Western Historical Manuscripts Collection, will speak on preserving documents, clippings and scrapbooks from 1:40-2:40 p.m.; and Stephanie Watkins, senior conservator with the Missouri State Archives, will speak on preserving photographs from 2:50-3:50 p.m. in N214-215 Memorial Union. To register, call 882-0076. Non-registrants will be accommodated on a space-available basis.

#### CHEMICAL ENGINEERING SEMINAR:

Anand Chellappa will present "Kinetic Modeling of the Methane Oxidation System" at 3:40 p.m. in W0009 Engineering Building East.

#### MCKINNEY LECTURE:

Clara Hill from the University of Maryland will present "The Role of Therapist Techniques in the Process and Outcome of Counseling Psychotherapy" at 3:40 p.m. in 313 Psychology Building.

#### NUTRITIONAL SCIENCES RESEARCH

**SEMINAR:** Robert Lim, assistant professor of pharmacology will speak at 3:40 p.m. in 103 Animal Science Research Center. Refreshments are provided at 3:20 p.m.

**WOMEN'S CENTER EVENT:** Melissa Alberts, MU peer rape educator, will present "Love Hurts?" at 4 p.m. in 229 Brady Commons.

### Friday, October 25

#### CREATIVE WRITING GRADUATE

**STUDENT READING:** Pamela McClure and Pamela Johnston will present their works at 4 p.m. in 103 Tate Hall.

**WOMEN STUDIES LECTURE:** Linda Nicholson, professor of educational administration and policy studies and women's studies at the University of Albany, will present "Theory as Strategy: Modernism, Postmodernism, and Feminism" at 4 p.m. in 7 Hulstond Hall Law School.

## Special Events

### Thursday, October 17

**WOMEN'S CENTER EVENT:** The film *Once Were Warriors* will be shown at 4 p.m. in 229 Brady Commons.

**LIBRARY BOOK SALE:** The annual Friends of the Libraries book sale begins today from 5-8 p.m. and continues through Oct. 19 in the Hearnes Center concourse area. The hours for Oct. 18 are from 10 a.m.-8 p.m. and for Oct. 19 from 10 a.m.-4 p.m.

OCT. 21-26

GEAR  
FOR SPORTS

BIG  
COTTON SALE!

20% OFF

Gear for Sports Big Cotton sweatshirts

Free Cap

Add a free Gear for Sports cap with any \$50 Gear for Sports purchase!

SUIT UP FOR HOMECOMING AT  
MIZZOU'S OFFICIAL BOOKSTORE  
IN BRADY COMMONS!

UNIVERSITY  
BOOKSTORE

University owned  
and operated  
since 1899.



UNIV. STORES ON THE WEB:  
www.ustores.missouri.edu



Main Level Brady Commons  
882-7611 TDD: 882-3985  
M-Thurs: 8-7, F: 8-5, Sat: 10-5

MU Faculty/Staff/Retiree/Alumni discount not applicable to Gear for Sports promotion. Employees & family of University Stores and Missouri Unions not eligible for prizes.

Win!

Gear for Sports Big Cotton sweatshirt given away daily. Come & sign up! No purchase necessary.

**Saturday, October 19**  
**RESEARCH REACTOR 30TH ANNIVERSARY/OPEN HOUSE:** The MU Research Reactor will hold an open house from 11 a.m.-3 p.m.

**Thursday, October 24**  
**CANCER FORUM:** A public forum on cancer will be held at 7 p.m. at Ellis Fischel Cancer Center lobby.

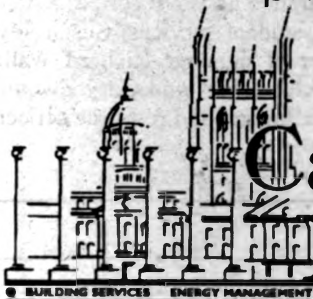
**Friday October 25**  
**INTERNATIONAL BAZAAR:** Event will be held from 10 a.m.-4 p.m. on Lowry Mall.

**Saturday, October 26**  
**NAVAL ROTC 50 YEAR REUNION:** All alumni of the naval ROTC program at MU, former staff and instructors are invited to attend the reunion at 9 a.m. in Mark Twain Ballroom Memorial Union. RSVP to Darlene at 882-6693 or 1-888-MU-NROTC.

## A Recycling Reminder



You'll be getting new MU phone books in early November. Remember to recycle your old phone books.



## Campus Facilities

BUILDING SERVICES ENERGY MANAGEMENT PLANNING, DESIGN & CONSTRUCTION MAINTENANCE & GROUNDS

## PERSHING COMMONS

### your one-stop tailgate shop

Whether you're hungry for a homestyle meal from the Down Under Diner, or you need a black and gold balloon bouquet from Hitt Street Market to elevate your school spirit, the shops in Pershing Commons can meet all your Homecoming needs.



**24 Hours**  
**7 days a week**



**11 a.m. - 11 p.m.**  
**7 days a week**



**PAY WITH YOUR MIZZOU I.D.**

NATIONAL PASTIMES PRODUCTIONS  
UNDER THE AUSPICES OF JAZZ SAINT LOUIS  
SPECIAL ASSISTANCE PROVIDED BY THE PROVOST OFFICE OF MINORITY AFFAIRS & FACULTY

A SESQUICENTENNIAL CELEBRATION OF "THE ART OF THE SAXOPHONE"  
150TH BIRTHDAY OF THE SAX

PRESENTS

# 1996-97 "WE ALWAYS SWING" JAZZ SERIES

**TICKETS NOW ON SALE!**

SEASON SUBSCRIPTION  
\$100 PUBLIC • \$95 STUDENTS  
4 SHOWS\*

\$64 PUBLIC • \$60 STUDENTS

\* Includes World Sax Quartet & Stanley Turrentine plus two shows of your choice!

**"The Dean of Chicago Saxophonists"**  
**VON FREEMAN QUARTET**  
Sun., Oct 20, 1996, 7 p.m.  
Whitmore Recital Hall, MU  
**ONLY 50 SEATS REMAINING!**

**"The Art of Innovation"**  
**WORLD SAXOPHONE QUARTET**  
Sat., Nov. 16, 1996, 8 p.m.  
Launer Auditorium  
Columbia College

**"The Ultimate Evening of Classic R&B"**  
**CHARLES BROWN QUINTET**  
& CHUMP CHANGE  
Fri., Dec. 13, 1996, 8:30 p.m.  
The Blue Note

**"Jazz Meets Gospel"**  
**JAMES WILLIAMS & ICU**  
& LBC CHOIR  
Sat., Feb. 15, 1997, 9 p.m.  
The Newman Center

**"The Afro-Cuban Latin Cuban Tradition Continues..."**  
**DAVID SANCHEZ**  
Wed., March 5, 1997, 8 p.m.  
The Blue Note

**"All-Woman 15-Piece Big Band"**  
**DIVA: NO MAN'S BAND**  
Thur., March 20, 1997, 7 p.m.  
Windsor Auditorium  
Stephens College

**"A Gala Evening With The Original 'Mr. T'"**  
**STANLEY TURRENTINE**  
Sat., April 26, 1997, 8 p.m.  
Holiday Inn Exec. Center Ballroom

**TICKETS** BRADY COMMONS BOX OFFICE • STREETSIDE RECORDS  
INFO/CHARGE LINE 882-4640



# Mizzou to study athletics program

*Campuswide committee will study academic integrity, rules compliance and commitment to equity.*

Mizzou will begin a yearlong, campuswide effort to study its athletics program as part of the NCAA Division I athletics certification process. The study will cover such specific areas as academic integrity, rules compliance and commitment to equity.

Academic accreditation is common in colleges and universities, but this program is the first to focus solely on certification of athletics programs. Following a pilot project, the NCAA Division I membership overwhelmingly supported the program and its standards at the 1993 annual convention.

The certification program's purpose is to ensure integrity in the institution's athletics operations. It will open up athletics to the rest of the University community and to the public. Institutions will benefit by increasing awareness and knowledge of the athletics program campuswide,

confirming its strengths and developing plans to improve in areas of concern.

"I think the biggest benefit of this effort will be to assure the University community and our other constituencies that they can be proud of the athletic programs that the University of Missouri supports," says Ed Blaine, chair of the athletic study committee and director of the Dalton Cardiovascular Research Center.

A member of the NCAA compliance services staff traveled to MU in late September for a one-day orientation visit to meet the committee and its subcommittees.

Within each area to be studied by the committee, the NCAA has set standards — called operating principles — which were adopted by the association to place a "measuring stick" upon which all Division I members will be evaluated.

**'The biggest benefit of this effort will be to assure the University community and our other constituencies that they can be proud of the athletic programs that the University of Missouri supports.'**

**Ed Blaine, chair of the athletic study committee and director of the Dalton Cardiovascular Research Center.**

The University also will examine how the activities of the athletics program relate to the mission and purpose of the institution.

Once the University has concluded its own study, an external team of reviews will conduct a three- to four-day evaluation visit on campus. Those reviewers will be peers from other colleges, conference offices and universities. That team will report to the NCAA committee on athletics certification, another indepen-

dent group. The committee will then determine the University's certification status and announce the decision publicly. Sanctions can be imposed on institutions that fail to conduct a comprehensive self-study or to correct problems. The three options of certification status are: certified, certified with conditions and not certified. Universities and colleges that do not take corrective actions may be ruled ineligible for NCAA championships.

"We want to have an excellent athletic program at MU," Blaine says. "The only way to have that is to compare ourselves with our peer institutions."

Members of the MU committee are: Martha Alexander, director of University Libraries; Bob Bailey, assistant dean of law; Muriel Battle, recently retired associate superintendent of the Columbia Public Schools; committee chair Ed Blaine; Joe Castiglione, athletic director; Marilyn Coleman, professor of human development and family studies; committee vice chair Michael Middleton, professor of law; Sarah Reesman, assistant athletic director; Carl Settergren, professor of natural resources; Gary Smith, director of admissions and registrar; Mandy Smith, administrative assistant for NCAA certification, student services; Susan Taylor, professor of nursing; Richard Wallace, interim chancellor; and Gary Zwonitzer, academic budget and resource officer.

## Campus Computing

# Short Courses

The following non-credit short courses are free of charge and open to MU faculty, staff and graduate students unless otherwise noted. Participants may be enrolled in no more than two courses in one month. Registration is required and is done on a first-come, first-served basis. To enroll, please call 882-6006 at least two days prior to the beginning of class. NOTE: When an ID is required for a class, participants should obtain the ID prior to registering for that class (call the Help Desk at 882-5000 for ID information). **Registrants should remember to phone 882-4568 the day prior to class in order to obtain permission to park in lot RC20.** More information about these classes is included in the Campus Computing Training Groups Web pages (see below). If you cannot connect to the World Wide Web, or if you need help doing so, please call 882-6006 for more information.

For the complete Fall Semester Short Course schedule including class times, see the following URL: <http://www.missouri.edu/~cctrain/cccalendar.html>  
For a complete listing of Course descriptions, see the following URL: <http://www.missouri.edu/~cctrain/course.html>

### WWW WORKSHOP: INTRODUCTION TO WEB PAGE AUTHORING Oct 21

**Prerequisites:** A SHOWME ID is required prior to registering for class, plus Internet Fundamentals with Netscape Basics course. Please bring a text outline of what you'd like on your home page to class.

### INTRODUCTION TO MICROSOFT WORD 6.0 Oct 22

**Prerequisites:** Foundations of Computers course or knowledge of file management with Macintosh or Windows, and mouse skills.

### INTRODUCTION TO PINEMAIL Oct 22

**Prerequisites:** A SHOWME ID is required prior to registering for the class, plus Internet Fundamentals including Netscape Basics course.

### INTERNET FUNDAMENTALS INCLUDING NETSCAPE BASICS (2 PARTS) Oct 23 & Oct 30 OR Oct 25 & Nov 1

**Prerequisites:** Foundations of Computers course or knowledge of file management with Macintosh or Windows, and mouse skills. Please bring a formatted 3.5" diskette to class.

### FOUNDATIONS OF COMPUTERS (2 PARTS) Oct 23 & Oct 30 OR Oct 25 & Nov 1

**Prerequisites:** None, other than basic computer experience and a desire to learn.

### INTRODUCTION TO MICROSOFT EXCEL 5.0 Oct 24

**Prerequisites:** Foundations of Computers course or knowledge of file management with Macintosh or Windows, and mouse skills.

### UNIX FOR SAS USERS Oct 25

**Prerequisites:** A SHOWME account is required prior to registering for the class.

## FOCUS ON FACULTY

### INTRODUCTION TO ADOBE PHOTOSHOP 3.0 FOR THE MACINTOSH (2 PARTS) Oct 25 & Nov 1

**Prerequisites:** Foundations of Computers course or knowledge of file management on the Macintosh, and mouse skills. Participants should bring a floppy disk containing a pre-scanned image to class.

*Ellis Library Copy Service Salutes*  
**THE PRIDE OF MU**

*Scholar-Athlete of the Week*



*Andrea Fischer*

Sport: IRONMAN Triathlon  
Job: Art Director, MIZZOU magazine  
Hometown: Hannibal, Missouri  
College: University of Missouri-Columbia  
Major: AB-Biological Sciences, 3.97 GPA, 1985  
NCAA All America Awards: Cross Country  
1981 (17th place overall)  
1983 (fifth place overall)  
1984 (11th place overall)

Recent 1996 Victories:

Northeast Missouri Triathlon, first place female, 9/8  
Heart of America Marathon, first place woman (tie), 9/2  
ShowMe State Games Triathlon, first place female, 7/21

THE IRONMAN TRIATHLON IS A TRADITION OF ENDURANCE THAT INCLUDES A 2.4-MILE OCEAN SWIM, A 112-MILE BIKE COURSE AND A 26.2-MILE RUN, ALL IN THE HEAT AND HUMIDITY OF KONA, ON THE BIG ISLAND OF HAWAII. TRIATHLETES FROM ALL AROUND THE WORLD CONVERGE IN HAWAII TO COMPETE FOR THE PRESTIGIOUS TITLE. THE IRONMAN, KNOWN AS THE OLYMPICS OF TRIATHLON EVENTS, ORIGINATED IN 1978 WITH 12 MEN COMPETING AND HAS NOW GROWN TO A 1,500-PERSON COMPETITION. THE IRONMAN WILL BE HELD ON OCTOBER 26 THIS YEAR AND IS SCHEDULED TO BE AIRED ON NBC ON DECEMBER 14, 1996.

PLEASE JOIN ELLIS LIBRARY COPY SERVICE IN EXTENDING BEST WISHES TO ANDREA FISCHER IN THE '96 IRONMAN.

**95¢ Full-Color Copies**  
with the presentation of this coupon to  
**Ellis Library Copy Service**  
115 Ellis Library • Columbia, Mo. 65201  
Phone: (573) 882-7262 • Fax: [573] 884-5004

Mon. thru Thurs. 7:30 a.m. to midnight • Friday 7:30 a.m. to 11 p.m. • Saturday 9 a.m. to 9 p.m. • Sunday noon to midnight  
Full Color Copies • Book Retrieval • 18 Colored Paper Choices

## Do you, or someone you know, have Alzheimer's disease?

The University of Missouri-School of Medicine is conducting a study of a new investigational medication for the treatment of Alzheimer's disease.

Qualifying participants need to meet the following criteria:

- 1) Age - 40 years and above
- 2) Mild to moderate Alzheimer's disease
- 3) Living at home with a caregiver
- 4) Have a caregiver who is able to participate in the study
- 5) Be in general good health
- 6) Minimum one year history of Alzheimer's disease symptoms

*If you are interested in participating or would like more information about this study, please call (573) 882-8040.*

## CRAFT STUDIO WORKSHOPS



203 BRADY COMMONS MU

- POT THROWING -
- PHOTOGRAPHY -
- JEWELRY MAKING -
- BLOCK PRINTING -
- LEATHERWORK -
- STAINED GLASS -

WORKSHOPS BEGIN THE WEEK OF:  
**OCTOBER 21**



2ND FLOOR - 882-2889

## Focus on Breast Cancer

Thursday, Oct. 24  
Ellis Fischel Cancer Center

6 p.m. to 7 p.m.  
KCLR Buddy Check 9  
Kick-off reception

Join Ellis Fischel Cancer Center and KCLR in the Buddy Check 9 program. Stop by Ellis Fischel to receive free stickers and a calendar designed to remind you to conduct a monthly self-breast exam and to call a friend and remind her, too.



Experts also will be available to consult with you about the correct way to conduct a self-exam and answer your questions about breast cancer.

Just for stopping by, you'll receive \$10 off a mammogram to use at Ellis Fischel's Cancer Screening Services.

Take a few minutes each month to focus on breast self-exam. It might save your life or the life of a friend.

7 p.m. to 8:30 p.m.  
"Breast Cancer and Genetics"  
Free public forum

A diverse panel of experts will discuss breast cancer and genetics. The psychological impact of genetic information as well as medical, ethical and legal concerns will be addressed.

Join KMIZ-TV's Teresa Snow as she moderates this important discussion. Bring questions of your own. After the forum enjoy dessert and become acquainted with others.

Panel members:

Vicki Dorr, M.D., director, Cancer Screening Services,

Ellis Fischel Cancer Center

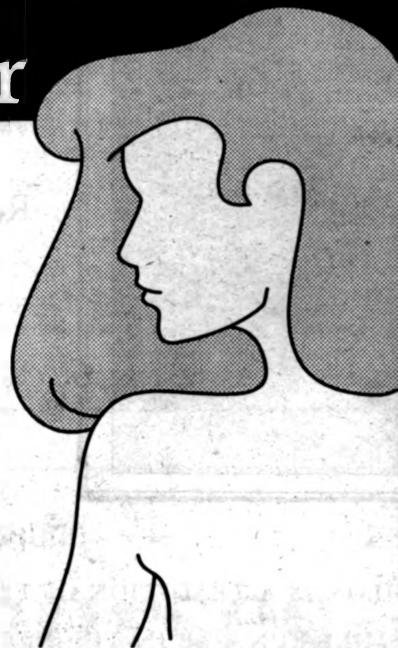
Judith Miles, M.D., Ph.D., director, Division of Medical Genetics,

MU Health Sciences Center

Christine Pfalz, M.S., genetics counselor, MU Health Sciences Center

Judge Ellen Roper, breast cancer survivor

Call 882-8511 for more information.



## CLASSIFIEDS

### SERVICES

A Marriage Encounter Weekend is coming to Columbia, November 8-10, 1996. Weekend concepts focus on improving communication and strengthening good marriages. Call Rich and Carol at 657-9685.

Ph.D. in English with 20 years college teaching, experienced in editing. Will edit books, proposals, dissertations, articles, major papers or presentations. Telephone (573) 445-6690 during normal business hours.

### FOR SALE

Three dark pine end tables, \$50 each; two 30" antique brass lamps, \$25 each; walnut occasional chair, \$50; maple magazine rack, \$10; hunter green king quilt, \$100. Call 474-3949.

The Classified Advertising Section is open only to faculty and staff members and retirees. A home phone number is required in all classified ads. No refunds will be given for cancelled ads.

Ads must be typed.

Rates: 30-word maximum \$5.

Publication deadlines: noon on Thursday of week prior to publication.

**Mizzou Weekly Classifieds:** Make your check payable to University of Missouri and send to: *Mizzou Weekly*, 407 Reynolds Center, Attention: Tanya Stitt.



University of Missouri Health Sciences Center

# MIZZOU

WEEKLY

Publications and Alumni Communication  
407 Reynolds Alumni and Visitor Center  
Columbia, MO 65211



University Libraries  
University of Missouri

### Digitization Information Page

Local identifier                      MizzouWeekly(print)

### Source information

Format                                      Newspaper  
Content type                                Text with images  
Source ID                                   Duplicate copies University Archives weeded out  
Notes

### Capture information

Date captured                              July-December, 2022  
Scanner manufacturer                      Plustek OpticBook  
Scanner model                                A300 Plus  
Scanning system software                    Book Pavilion  
Optical resolution                            600 dpi  
Color settings                                8 bit grayscale for majority of pages;  
    24 bit color for color illustrations/portraits/photographs  
File types                                      tiff  
Notes

### Derivatives - Access copy

Compression                                Tiff: LZW compression  
Editing software                              Adobe Photoshop 2022  
Resolution                                    600 dpi  
Color    same as captured  
File types                                      pdf created from tiffs  
Notes    Images cropped, straightened, and brightened.