

# MIZZOU

## WEEKLY

University of Missouri-Columbia Oct. 31, 1996

### INSIDE THE WEEKLY

Page 3: With 91 percent of MU's United Way goal reached, the campaign will continue

Page 6: Seminars, receptions highlight the opening of the Black Studies Center Nov. 7 and 8

## User-friendly

Study finds MU faculty show more concern for students.

**A** renewed commitment to undergraduate education is showing up all over campus. A greater number of academically talented freshmen are enrolling at Mizzou, and there has been a 50 percent increase in Bright Flight Scholars since 1993. Students are flocking to living and learning communities such as the Freshman Interest Groups, and they're doing better academically. In recent years, MU has beefed up its advising efforts.

That enthusiasm for Mizzou's undergraduate education effort applies to faculty as well. A new national study on faculty attitudes includes responses from MU faculty for the first time, and those responses show that professors at Mizzou are committed to undergraduate education.

Compared to professors at other public universities, the study demonstrates that undergraduate faculty at Mizzou show greater concern for students' academic and

psycho-social development, are more likely to use collaborative learning rather than extensive lecturing, and make greater use of frequent assessments and feedback for academic performance.

Previous research has found that each of those factors has a positive impact on student success rates.

The survey, titled "The American College Teacher," was developed by Alexander Astin at UCLA's Higher Education Research Institute and has been conducted every three years since the 1989-90 academic year. MU faculty participated for the first time during the 1995-96 academic year.

"I think MU has a stronger commitment to the teaching of undergraduates than you typically would find at a Carnegie Research I university," says Provost Edward

See Survey, Page 3

### The American College Teacher '95 Survey

Item	MU	Public Universities
<b>FACULTY CONCERN FOR STUDENTS AND STUDENT LEARNING</b>		
Faculty are interested in students' problems	70.5%	62.7%
It is easy for students to see faculty outside of class or office hours	89.6%	83.7%
Little faculty/student contact (not descriptive)	67.0%	60.8%
Prepare students for employment after college	67.9%	60.5%
Prepare students for graduate or advanced education	56.8%	50.8%
Help students' develop personal values	52.8%	49.8%
Provide for students' emotional development	30.7%	26.6%
Student Affairs staff have the support and respect of faculty	62.2%	56.1%
<b>USE OF COLLABORATIVE/EXPERIENTIAL LEARNING IN CLASSROOM</b>		
Cooperative learning	33.5%	28.6%
Experiential learning and/or field studies	23.5%	18.7%
Group projects	23.1%	20.6%
Student evaluations of each others' work	15.8%	11.2%
Extensive lecturing	52.5%	56.6%
<b>ASSESSMENT AND FEEDBACK REGARDING STUDENT PERFORMANCE</b>		
Quizzes	31.3%	27.9%
Weekly essays	16.2%	13.4%
Multiple drafts of written work	20.5%	13.9%
Multiple-choice mid-term and final exams	20.9%	23.3%
Short-answer mid-term and final exams	31.7%	33.8%
Grading on a curve	23.0%	27.8%

## CONGRATULATIONS 1996 FACULTY-ALUMNI AWARD WINNERS



Robert Marshall  
Distinguished Faculty Award



William Stauffer  
Distinguished Service Award



Michael Budds



Jack Bush



Byron Calame



Kathryn Calame



Jack Hackethorn



Michael Hosokawa



George Jesse



E. Stanley Kroenke



Seung-Yun Lee



Loren Nikolai



George Satterlee



E. Dorinda Shelley



Susan Taylor



Henry Waters III



James Whitaker

**E**xceptional executives, savvy scientists and prominent professors are among those to be honored by the MU Alumni Association at the 29th annual Faculty-Alumni Awards Banquet Nov. 1 at the Reynolds Alumni and Visitor Center

**Robert T. Marshall**, the Arbuckle professor of food science and human nutrition, receives the Distinguished Faculty Award, the highest honor the Association grants to a faculty member. It recognizes sustained efforts in teaching, research and service that have added to MU's excellence.

On the faculty for 36 years, Marshall, BS Ag '54, MS '58, PhD '60, is known internationally for his understanding of dairy food microbiology. His many honors include international, national and campuswide teaching awards, and the prestigious Award of Honor from the American Dairy Science Association in 1996.

**William A. Stauffer**, BJ '52, receives the Distinguished Service Award, the highest honor the Association presents to an individual. It recognizes outstanding service by an individual whose sustained efforts and support have added to MU's excellence.

A resident of Des Moines, Iowa, Stauffer retired in 1987 as executive vice president and chief operating officer of Blue Cross/Blue Shield of Iowa. Stauffer was chairman of the Development Council during MU's successful capital campaign in the 1980s.

See Winners, Page 2

### CURATORS APPROVE \$100 MILLION BOND PACKAGE FOR HEALTH SCIENCES CENTER

The Board of Curators unanimously approved the sale of \$100 million in bonds at its Oct. 24 meeting in Columbia to finance improvements at the Health Sciences Center during the next five years. At the same time the board approved the sale of an additional \$38 million in bonds to be used to retire old debt, resulting in a savings of \$1.2 million in debt service expenses. The bond issue is a crucial step toward the University's goal of investing more than \$211 million in improvements

and acquisitions designed to ensure that the Health Sciences Center remains viable in the expanding managed-care market.

Curators also approved three new academic programs at MU: A master of science in computer engineering is to be offered by the College of Engineering, starting in fall 1997, and a PhD program in computer engineering and computer science — offered at only a few schools in the United States — will be created. The board also approved a master's program in religious studies that will begin next fall in cooperation with Washington University. The proposed programs are subject to approval by the

Coordinating Board for Higher Education.

The board approved a resolution commending the Laurie family of Columbia for making the "largest private gift in Mizzou history to set a new standard in philanthropy." The resolution directs University administration to develop a funding plan for the MU Sports Park, which will boast state-of-the-art facilities for basketball, football and other athletic events. Curators approved the Kansas City architectural firm of Ellerbe Becket as architects and engineers for the proposed new basketball arena.

### DISTINGUISHED KOREAN ALUMNUS WILL SPEAK NOV. 1

Seung-Yun Lee, a prominent economist who played an important role in the "Korean Economic Miracle" that began in the late 1960s, will speak on new challenges facing the Korean economy at 3:30 p.m. Nov. 1 in N214-215 Memorial Union. Lee, who received his master's degree in economics from Mizzou in 1957, will be on campus to receive a Distinguished Alumni Award from the MU Alumni Association.

Lee has taught at top universities in Korea and has written extensively on the role of

efficient financial markets in economic development and in the provision of investment finance. He was a member of the National Assembly from 1976 to 1996, and served as minister of finance, deputy prime minister and minister of economics.

## Parking & Transportation Services

Turner Avenue Garage  
Level 2  
882-4568

Departments can now order temporary permits online for their guests through the Parking & Transportation Departmental Home Page. The URL address is:  
<http://parking.ps.missouri.edu>

WE'LL GET YOU ON THE ROAD.

University Auto Leasing has a fleet of cars available for leasing by day or month for university business. Call 882-4511 or stop by the University Garage on the east side of the General Services Building on South Hearnes Center Drive.



## Winners

From Page 1

Faculty-Alumni Award winners are selected for accomplishments in their professional lives and service to the University.

### ★MICHAEL BUDDS

Associate professor of music  
Budds is a national authority on American jazz and on rock 'n' roll.

### ★JACK BUSH, BS BA '58

Chairman of Raintree Partners and retired president and director of Michaels Stores

Led Michaels from 130 stores with \$32 million in revenue in 1991 to 530 stores with revenues of more than \$1.4 billion in 1995.

### ★BYRON CALAME, BJ '61

Deputy managing editor of *The Wall Street Journal* in New York City

Initiated and directs the newspaper's computer-assisted reporting program.

### ★KATHRYN CALAME, AB '62

Professor of microbiology and of biochemistry and biophysics at Columbia University College of Physicians and Surgeons in New York City

Directs an interdepartmental doctoral program in cellular, molecular and biophysical sciences at the university.

### ★JACK HACKETHORN, BJ '36

Retired director of public relations for Missouri Farmers Association in Columbia, Mo.

Was a leader in helping to establish the four-year medical school at Mizzou.

### ★MICHAEL HOSOKAWA

Professor of family and community medicine, and assistant dean for curriculum and minority affairs

Led a complete revision of the Medical School's four-year curriculum, and he is developing programs to increase the number of medical students who are culturally, geographically and economically disadvantaged.

### ★GEORGE JESSE

Professor and unit leader of animal sciences

Nationally known for his expertise in swine management.

### ★E. STANLEY KROENKE, BS BA '71, MBA '73

Chairman of The Kroenke Group and co-owns the St. Louis Rams  
Kroenke of Columbia owns one of the largest privately owned real estate and investment companies in the country, with assets totaling nearly \$1 billion and approximately 15 million square feet.

### ★SEUNG-YUN LEE, MA '57

Retired member of the Korean National Assembly  
Lee of Seoul, Korea, has served in major administrative posts under five Korean presidents.

### ★LOREN NIKOLAI

Ernst & Young Distinguished Professor of Accountancy  
Nikolai regularly teaches the most difficult accounting course.

### ★GEORGE SATTERLEE, BS CIE '52

Retired director of public works in Kansas City, and special projects adviser to the HNTB Corp. in Kansas City.

Played a major role in the design and construction of the interstate highway system in the Kansas City region.

### ★E. DORINDA SHELLEY, MD '66

Professor of dermatology at the Medical College of Ohio in Toledo  
Her books on advanced dermatologic diagnosis and therapy are popular references in the United States and around the world.

### ★SUSAN TAYLOR

Professor of nursing  
She is often in demand as a speaker and consultant on a concept of care known as Orem's Self-Care Deficit Nursing Theory.

### ★HENRY WATERS III, AB '51

Editor and publisher of the *Columbia (Mo.) Daily Tribune*  
Under his leadership, the newspaper has grown to include a commercial printing division and has solidified its position as the oldest continually operated family-owned business in Boone County, Mo.

### ★JAMES WHITAKER, AB '67, MD '71

Head of the Kansas City Bone and Joint Clinic, and president of the medical staff at Research Medical Center in Kansas City  
Whitaker of Shawnee Mission, Kan., is a recognized expert in the fields of sports medicine and hand surgery.

MIZZOU  
WEEKLY

Volume 18 Number 11

A publication for University of Missouri-Columbia faculty and staff, published every Thursday during the academic year and twice a month during the summer by Publications and Alumni Communication, a department of University Affairs, 407 Reynolds Alumni and Visitor Center, 882-7357. News deadline is noon Thursday the week before publication. Annual subscriptions are available for \$20.

Interim editor . . . . . John Beahler  
Interim graphic editor . . . . . Sue Richardson  
Director of advertising . . . . . Tanya Stitt  
Writers . . . . . Sara Grier, Sue Richardson  
Assistants . . . . . Amy Elsner, Christie Studdard

Printed with soy ink on recycled newsprint containing 90 percent to 100 percent post-consumer waste.



## Survey

From Page 1

Sheridan. "This study shows that our faculty's commitment to research hasn't kept them from being equally committed to teaching."

The latest national report was based on surveys of nearly 34,000 full-time faculty members who teach undergraduates at 384 colleges and universities around the country. Findings from the national report were featured in the Sept. 13 edition of *The Chronicle of Higher Education*.

At MU, 275 undergraduate faculty took part in the study. Their responses were compared to those of 5,697 colleagues from other public universities. Gary Pike, director of MU's Office of Student Life Studies, analyzed the study and reported on a number of areas where the attitudes that the faculty at Mizzou have about undergraduate education differed from other public university professors.

Based on his experience with other surveys from the Higher Education Research Institute, Pike says that a 3 percent to 5 percent variation between institutions repre-

sents a meaningful difference, while more than 5 percent represents a substantial difference. (Some highlights of the study are shown in the accompanying table.)

What the data show, Pike says, is that Mizzou faculty don't fit the popular perception of faculty at large research universities — that professors are primarily interested in research and not in teaching undergraduates. "There are a number of areas in this study where MU faculty seem to be counter to the stereotypes," Pike says. "I think, based on the data, the description of MU as a public Ivy is on target."

Provost Sheridan sees another important trend that surfaced in the study. Substantially more undergraduate faculty at MU think it is important to prepare students for employment after college and for graduate study than do their colleagues at other public universities.

"I think that shows that our faculty are very reality-oriented. They want to prepare students for whatever career they choose when they leave here," Sheridan said. "Our faculty want to provide a quality undergraduate education that prepares students for life."

# MU's United Way campaign continues fund-raising effort

Oct. 25 was the preferred date for MU faculty, staff and retirees to make their contributions to MU's United Way fundraising effort. However, with 91 percent of the this year's \$295,000 goal received by Oct. 25, the campaign will be extended.

"We are extending the campaign to allow University faculty, staff and retirees the opportunity to return their United Way cards and hopefully make a contribution to this worthy organization," says Bruce Walker, dean of business and public administration and one of three campus

co-chairs of Mizzou's United Way effort.

"We are close to finishing a successful campaign," Walker says. "To achieve our goal I would urge all members of the University community who have not yet made a commitment to United Way to consider doing so."

"It's not too late and I believe United Way needs — and deserves — our support."

Funds raised for the 30 United Way agencies stay in mid-Missouri, and fund-raising efforts by the MU community go a long way to helping the nearly 76,000 people who receive services from those

agencies, Walker notes.

"Contributions from the University of Missouri family are critical to the success of the Columbia Area United Way. In fact, the University is the largest single organization that conducts a campaign on behalf of the United Way in mid-Missouri," Walker says.

"In my first year as campus co-chair of the United Way campaign, I've been pleased with the large number of people who work to make our campaign a success. Also, I have been gratified by the generosity shown by our faculty, staff and retirees."

Individuals can still contribute their fair share, he notes, by contacting their

regional leaders or Patsy Higgins at 882-7254.

At MU's report meeting Oct. 30, campaign organizers reported receiving \$268,813 in donations and pledges, or 91 percent of this year's goal of \$295,000. Last year at this time the University had reached 99 percent of its goal.

The Hospital and Clinics region already has received 38,150, or 129 percent of its \$29,500 goal.

The following amounts were also reported for the other regions:

■Academic I, \$77,649 toward a goal of \$85,550 or 91 percent of goal;

■Academic II, \$56,014 toward a goal of \$70,800 or 79 percent of goal;

■Administrative, \$45,682 toward a goal of \$47,200, or 96 percent of goal;

■Retirees, \$23,643 toward a goal of \$32,450, or 72 percent of goal;

■UM System, \$27,675 toward a goal of \$29,500 or 93 percent of goal.



**You're Invited to Attend...**

## General Stores 4th Annual Open House

**Date:** Friday, November 8th, 1996

**Location:** General Services Building  
General Stores

**Time:** 1:30 p.m. to 3:30 p.m.

- Manufacture Representatives•
- Product Samples•
- Giveaways•
- Refreshments Provided•

**Hope to see you there!**


## Take Charge of Your Health

Noon - 12:45 p.m.  
Tuesday, Nov. 5  
South Memorial Union, S110  
(Bring your lunch, beverages are provided)

When is a health problem minor and when should you get help? Bring your lunch and join Jane Cooper, a registered nurse at University Hospital and Clinics, to learn about taking charge of your health. She'll discuss how to handle minor health problems at home, access health resources and strengthen your relationship with your physician.

University staff members whose primary care physician is a University Physician will receive a free Healthwise Handbook, a \$7 value. Please bring your HMO or POS card.

Registration is required. Call 882-4736 to reserve your space or for more information.



University  
Hospital & Clinics  
*The Staff for Life*

# CALENDAR

Send calendar items by Campus Mail to  
Mizzou Weekly Calendar, 407 Reynolds Center,  
by noon Thursday the week before publication.  
Events are free and open to the public unless otherwise noted.

## Concerts & Plays

### Saturday, November 2

#### UNIVERSITY CONCERT SERIES:

Internationally known violinist Midori will perform at 8 p.m. in Jesse Auditorium. For ticket information, call 882-3781.

### Wednesday, November 6

#### STUDENT ENSEMBLE SERIES:

Trombone Studio will perform at 7 p.m. in Whitmore Recital Hall.

### Thursday, November 7

#### MISSOURI THEATRE WORKSHOP:

Missouri Theatre Workshop will present "Translations" Nov. 7-9 and 14-17 at the Corner Playhouse. For ticket and show time information, call 882-PLAY.

## Conferences

### Friday, November 8

**NURSING CONFERENCE:** The 4th annual Advanced Practice Nursing Conference, "Gaining Momentum" will be held Nov. 8-9 at the Best Western Columbia Inn. For registration and cost information, call 882-0215.

## Courses

**BEGINNING CHILDBIRTH:** Course will be offered from 7-9 p.m. Tuesdays through Nov. 26. and 7-9 p.m. Mondays, Nov. 4 - Dec. 23 at Ellis Fischel Cancer Center. You should begin this course three months before your baby is due. Cost: \$45. To register, call 882-6973.

### Tuesday, November 5

**ARTHRITIS SELF-HELP CLASS:** Will be offered from 10 a.m.-noon Nov. 5, 13 and 19 at the Old Alumni Center. Cost: \$20. To register, call 882-6565.

### Wednesday, November 6

**NEW EMPLOYEE ORIENTATION:** Course will be offered from 8:30 a.m.-noon in Columns 3, Reynolds Alumni Center. The course is open to all new benefit-eligible employees.

**INFANT SAFETY AND CPR:** Course will be offered from 7-9 p.m. Nov. 6 and 13 at Ellis Fischel Cancer Center. Cost: \$30. To register, call 882-6973.

### Thursday, November 7

**REFRESHER CHILDBIRTH:** Course will be offered from 7-9 p.m. Nov. 7, 14 and 20 at Ellis Fischel Cancer Center. Cost: \$30. To register, call 882-6973.

## Exhibits

**ART FOR LIFE:** Works by Ben Cameron, Ed Collings, Sid Larson, Mike Sleadd and Tom Watson, members of the art faculty at Columbia College, will be on display through Jan. 5 in the lobbies of University Hospital and Clinics and Ellis Fischel Cancer Center.

**BINGHAM GALLERY:** "Baskets: Structuring Space, Empty and Enclosed" will be on display through Nov. 1. "MFA Thesis Exhibitions" will be on display Nov. 4-22.

The gallery, located in the Fine Arts Building, is open from 10 a.m.-4 p.m. weekdays.

**BRADY COMMONS GALLERY:** Poster Exhibition will be on display through Nov. 7.

The Brady gallery, located in 203 Brady Commons, is open from 10 a.m.-5 p.m. weekdays.

**MUSEUM OF ANTHROPOLOGY:** The museum, located in Swallow Hall, is open from 9 a.m.-4 p.m. weekdays.

**MUSEUM OF ART AND ARCHAEOLOGY:** "Art of the Eye: A Exhibition on Vision" will be on display through Dec. 15.

Ongoing exhibits:

- "Mark Rothko Loan"
- "The Saul and Gladys Weinberg Gallery of Ancient Art"
- "Byzantine and Early Christian Gallery"
- "European and American Gallery"
- "Expressions of Africa"
- "Isms and Others in the Twentieth Century"
- "The Kress Study Collection"

The museum, located in Pickard Hall, is open from 9 a.m.-5 p.m. Tuesday through Friday, 6 p.m.-9 p.m. Thursday, noon-5 p.m. Saturday and Sunday. Closed Mondays and national holidays.

**ROGERS GALLERY:** "Territories of Secrets- Images in Water-Color Paintings, Photographs, and Prose Poetry" by Ruth Brent, professor and chair of environmental design, will be on display through Oct. 31.

"Architectural Computer Graphics," architectural renderings by Pete Scavone of TRI Architects, Inc., St. Louis, will be on display from Nov. 4 - Dec. 6.

The gallery, located in 142 Stanley Hall, is open from 9-11 a.m. and 1-4 p.m. weekdays.

#### STATE HISTORICAL SOCIETY:

Thomas Hart Benton's Original Illustrations for Mark Twain's *The Adventures of Huckleberry Finn* will be on display in the gallery through mid-December. The gallery is open 8:30 a.m.-4 p.m. weekdays.

"Decades: 1886-1966, Editorial Cartoons" is on display in the east-west corridor.

The works of Missouri artists, Algot Nordstorm and David Laughlin will be on display in the north-south corridor through mid-December. The corridors are open from 8 a.m.-4:30 p.m. weekdays and 9 a.m.-4:30 p.m. Saturday.

#### WESTERN HISTORICAL MANUSCRIPT COLLECTION:

"Landmark Presidential Elections" featuring political materials from the collection will be on display through Nov. 8. The collection, located in 23 Ellis Library, is open from 8 a.m.-4:45 p.m. weekdays and until 9 p.m. on Tuesdays.

## MSA/GPC Films

### Thursday, October 31

*The Fearless Vampire Killers* will be shown at 9:30 p.m. in Ellis Auditorium. Free.

### Friday, November 1

*Safe* will be shown at 7 and 9:30 p.m. in Ellis Auditorium. Cost: \$2 advance, \$2.50 at door.

### Saturday, November 2

*Safe* will be shown at 7 and 9:30 p.m. in Ellis Auditorium. Cost: \$2 advance, \$2.50 at door.

### Monday, November 4

*Shanghai Triad* will be shown at 7 and 9:30 p.m. in Ellis Auditorium. Cost: \$1.50.

### Friday, November 8

*Fargo* will be shown at 7 and 9:30 p.m. in Ellis Auditorium. Cost: \$2 advance, \$2.50 at door.

### Saturday, November 9

*Fargo* will be shown at 7 and 9:30 p.m. in Ellis Auditorium. Cost: \$2 advance, \$2.50 at door.

## Lectures & Seminars

### Thursday, October 31

**NOEL P. GIST INTERNATIONAL AFFAIRS LUNCHEON SEMINAR:** The brown-bag seminar will feature Earl

Lubensky and Herb Tillema who will present "What is the US Foreign Policy and How is it Working?" at noon in S204 Memorial Union.

#### TRAINING AND DEVELOPMENT

**SEMINAR:** "What is CQI?" will be offered from 1-4:30 p.m. in S207 Memorial Union. To enroll call 882-2603

#### CHEMICAL ENGINEERING SEMINAR:

Gayatri Deshpande, graduate student in chemical engineering, will present "Study of the Destructive Adsorption of 2,4,-DNT using Ultrafine MgO" at 3:40 p.m. in W0009 Engineering Building East.

#### NUTRITIONAL SCIENCES RESEARCH

**SEMINAR SERIES:** Matt Lucy, assistant professor of animal sciences will present "Regulation of Growth Hormone Receptor Gene Expression" at 3:40 p.m. in 103 Animal Science Research Center.

Refreshments are provided at 3:20 p.m.

#### WOMEN'S CENTER EVENT:

Everett A. Dietle, co-coordinator Lesbian/Gay/Bisexual Resource Center, will present "The Tyranny of Fashion" at 4 p.m. in 229 Brady Commons.

### Friday, November 1

**ECONOMICS SEMINAR:** Seung-Yun Lee, former Vice Prime Minister, former Minister of Finance, Korea and Distinguished Alumni Award Recipient, will present "Challenges Facing the Korean Economy" at 3:30 p.m. in N214-215 Memorial Union.

#### ENGLISH COLLOQUIUM SERIES:

Gilbert Youmans, professor of English, will present "The Structure of (All) Interpretation" at 3:45 p.m. on 103 Tate Hall.

### Monday, November 4

#### JOURNALISM BROWN-BAG SEMINAR:

John Brady, visiting professor of journalism, will present "Editing to Win: Positioning a Magazine in Competitive Times" at 12:40 p.m. in Tucker Forum.

#### BIOCHEMISTRY SEMINAR:

Jilly Evans from the Merck Frosst Centre for Therapeutic Research in Quebec will present "Leukotriene Inhibitors and Antagonist" at 3:40 p.m. in MA217 Medical Sciences Building.

#### TRAINING AND DEVELOPMENT

**SEMINAR:** "Getting Started in CQI" will be offered from 8 a.m.-4 p.m. in S203 Memorial Union. To enroll call 882-2603.

### Tuesday, November 5

#### BUSINESS SERVICES SEMINAR:

"Environmental Health and Safety" will be presented from 10:30 a.m.-noon at Research Park Development Building training room 12. For information or to enroll, call 882-7254.

#### PHARMACOLOGY RESEARCH

**SEMINAR:** Robert Theobald, professor and chairman Kirksville (Mo.) College of Osteopathic Medicine, will present "The Role of ATP in Urinary Bladder Function" at 11:40 a.m. in M558 Medical Sciences Building.

#### PROFESSIONAL DEVELOPMENT

## Do you, or someone you know, have Alzheimer's disease?

The University of Missouri-School of Medicine is conducting a study of a new investigational medication for the treatment of Alzheimer's disease.

Qualifying participants need to meet the following criteria:

- 1) Age - 40 years and above
- 2) Mild to moderate Alzheimer's disease
- 3) Living at home with a caregiver
- 4) Have a caregiver who is able to participate in the study
- 5) Be in general good health
- 6) Minimum one year history of Alzheimer's disease symptoms

If you are interested in participating or would like more information about this study, please call (573) 882-8040.

FREE

22 oz  
Soda

With \$5.00 purchase  
(Magazines excluded)

Offer good through November



**MAIN LEVEL BRADY COMMONS**  
 MON. - THURS. 7:30 A.M. - 11 P.M.  
 FRI. 7:30 A.M. - 7 P.M.  
 SUN. 3 P.M. - 11 P.M.

**WORKSHOP:** James Groccia, director of the Program for Excellence in Teaching, will present "Building Your Teaching Portfolio" from 11:40 a.m.-12:30 p.m. in N214 Memorial Union.

**HEALTH SEMINAR:** This brown bag seminar, "Take Charge of Your Health" will be presented from noon-12:45 p.m. in S110 Memorial Union. For more information or to make a reservation, call 882-6565. Space is limited.

**WAKONSE COLLOQUIUM:** Caren Cooper, counseling psychologist with the Counseling Center, will speak on "Eating Disorders" at 5:30 p.m. in Bingham Dining Hall.

**TRAINING AND DEVELOPMENT SEMINAR:** "CQI Facilitation" will be offered from 8 a.m.-4 p.m. in S207 Memorial Union. To enroll, call 882-2603.

**Wednesday November 6**

**MIDDAY GALLERY EVENT:** Jo Stealey, assistant professor of art, will present "The Development of an Artist: Faith Ringgold" at 12:15 p.m. in the Museum of Art and Archaeology in Pickard Hall.

**BUSINESS SERVICES SEMINARS:** "Printing Services" will be presented from 10-11:30 a.m. at Printing Services, 2800 Maguire.

"Environmental Health and Safety" will be presented from 1-2:30 p.m. at Research Park Development Building training room 12. For information or to enroll, call 882-7254.

**PHYSIOLOGY SEMINAR:** George Kracke, associate professor of anesthesiology, will speak at 2:40 p.m. in S261 Medical Sciences Building. Refreshments will be served at 2:20 p.m.

**LUNCHTIME CONVERSATIONS ABOUT WRITING:** Dennis Sentilles, professor of mathematics, will present "Concepts vs. Procedures: Students Writing About Math" from 3:45-4:30 p.m. in 325 GCB.

**WOMEN'S CENTER EVENT:** Lisa Christian will present "Chaos Reined" at 7 p.m. in 229 Brady Commons.

**BIOLOGICAL SCIENCES ECOLOGY, EVOLUTION & BEHAVIOR SEMINAR:** Robert Holt from the University of Kansas will present "Niche Conservationism: A Population Dynamic Perspective" at 7:30 p.m. in 106 Lefevre.

**Thursday, November 7**

**CHEMICAL ENGINEERING SEMINAR:** Surajit Fuangfoo, doctoral candidate in chemical engineering, will present "Catalytic Conversion of Methane over Ferric Molybdate Catalyst" at 3:40 p.m. in W0009 Engineering Building East.

**NUTRITIONAL SCIENCES RESEARCH SEMINAR SERIES:** Steven Nothwehr, assistant professor of biological sciences, will present "Membrane Protein Sorting in the Yeast Secretory Pathway" at 3:40 p.m. in 103 Animal Science Research Center. Refreshments are provided at 3:20 p.m.

**WOMEN'S CENTER EVENT:** The center's staff will present "Treasuring Yourself When Others Are Trashing You" at 4 p.m. in 229 Brady Commons.

**TRAINING AND DEVELOPMENT SEMINAR:** Bonnie Arnold, retirement consultant, will speak on retirement planning from 9:30 a.m.-4 p.m. in 146 Heinkel. To enroll, call 882-2603.

**Friday, November 8**

**TRAINING AND DEVELOPMENT SEMINAR:** Retha Nichols, coordinator tax deferred annuity program, will present "Tax Deferred Annuities" from 9-11 a.m. in 146 Heinkel. To enroll, call 882-2603.

**CREATIVE WRITING GRADUATE STUDENT READING:** Michelle Reese and Kristen Harmon will present their works at 4 p.m. in 103 Tate Hall.

**Monday, November 11**

**BIOCHEMISTRY SEMINAR:** Gary Weisman, biochemistry, will present "Structure and Function of Nucleotide Receptors" at 3:50 p.m. in S255 School of

Nursing.  
**SOIL AND WATER RESOURCES SEMINAR:** Clara Haenchen, graduate research assistant of soil and atmospheric sciences, will present "Plant Nutrition of *Capsicum Chinese* from Jamaican Soils" at 3:40 p.m. in 133 Mumford Hall.

**Meetings**

**Thursday, October 31**  
**FACULTY COUNCIL:** Will meet at 3:40 p.m. in S110 Memorial Union.

**Tuesday, November 5**  
**L.E.A.N. FOR LIFE:** Will meet at 5:30 p.m. at the Cosmopolitan International Diabetes Center Classroom at University Hospital and Clinics. This is a free introductory session to the 10-week weight-management program. To register or for more information, call 882-2251.

**Thursday, November 7**  
**TOASTMASTERS:** Will meet from noon-1 p.m. in Room 1W19 University Hospital and Clinics. For information, call Sue Austin Boren at 882-1492.

**Special Events**

**FLU SHOTS:** Flu shots will be available for individuals 13 years and older from 10 a.m. - 6 p.m. Monday through Saturday throughout November at the Health Information Center in Columbia Mall. High-risk individuals (those 65 and over or people with chronic illness) will be offered the vaccine free of charge. For others, the shots cost \$5. Some discounts apply for managed care members with a University primary care physician. Please bring your insurance card. For information, call 882-5789.

**Friday, November 1**  
**WEB WORKSHOP FOR KIDS:** Teachers,

students ages 12-18, parents and other community leaders are invited to a free workshop at the College of Engineering that will explain how they can take part in a \$1 million national competition titled ThinkQuest=AE, which challenges student teams to use the latest Internet technology to make their favorite subjects exciting and fun for others to learn. The event begins at 1 p.m. in Room W1005 Engineering Building East. To enroll, call Lois Tolson at 882-4377 or call up the College's web page at <<http://www.ecn.missouri.edu>>.

**Tuesday, November 5**  
**CHOLESTEROL SCREENING:** Will be offered from 8 a.m.-noon and 3-5:30 p.m. at the Health Information Center in Columbia Mall. Three types of tests are available. To make an appointment, call 882-6565.  
**WOMEN'S CENTER EVENT:** "Candle Making" will be offered at 4 p.m. at the MSA/GPC Craft Studio. Cost: \$2. To register call the Women's Center at 882-6621.



Campus Computing

**Short Courses**

The following non-credit short courses are free of charge and open to MU faculty, staff and graduate students unless otherwise noted. Participants may be enrolled in no more than two courses in one month. Registration is required and is done on a first-come, first-served basis. To enroll, please call 882-6006 at least two days prior to the beginning of class. NOTE: When an ID is required for a class, participants should obtain the ID prior to registering for that class (call the Help Desk at 882-5000 for ID information). **Registrants should remember to phone 882-4568 the day prior to class in order to obtain permission to park in lot RC20.** More information about these classes is included in the Campus Computing Training Groups Web pages (see below). If you cannot connect to the World Wide Web, or if you need help doing so, please call 882-6006 for more information.

For the complete Fall Semester Short Course schedule including class times, see the following URL: <http://www.missouri.edu/~cctrain/cccalendar.html>  
For a complete listing of Course descriptions, see the following URL: <http://www.missouri.edu/~cctrain/course.html>

**INTRODUCTION TO ADOBE PHOTOSHOP 3.0 FOR THE MACINTOSH (2 PARTS)**  
**Nov 4 & 11 or Nov 6 & 13**

**Prerequisites:** Foundations of Computers course or knowledge of file management on the Macintosh, and mouse skills. Participants should bring a floppy disk containing a pre-scanned image to class.

**MICROSOFT EXCEL 5.0 TOPICS: GRAPHING**  
**Nov 6**

**Prerequisites:** Introduction to Excel course or experience with Excel spreadsheets.

**WWW WORKSHOP: INTRODUCTION TO WEB PAGE AUTHORING**  
**Nov 7**

**Prerequisites:** A SHOWME ID is required prior to registering for class, plus Internet Fundamentals with Netscape Basics course. Please bring a text outline of what you'd like on your home page to class.

**INTRODUCTION TO MICROSOFT WORD 6.0**  
**Nov 4**

**Prerequisites:** Foundations of Computers course or knowledge of file management with Macintosh or Windows, and mouse skills.

**INTRODUCTION TO MICROSOFT EXCEL 5.0**  
**Nov 5**

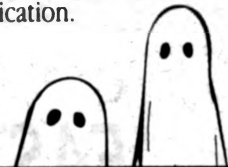
**Prerequisites:** Foundations of Computers course or knowledge of file management with Macintosh or Windows, and mouse skills.

**INTERNET FUNDAMENTALS INCLUDING NETSCAPE BASICS (2 PARTS)**  
**Nov 7 & 14**

**Prerequisites:** Foundations of Computers course or knowledge of file management with Macintosh or Windows, and mouse skills. Please bring a formatted 3.5" diskette to class.

**MICROSOFT WORD 6.0 TOPICS: COLUMNS, TABLES, AND MAIL-MERGE**  
**Nov 7, Nov 8**

**Prerequisites:** Introduction to Microsoft Word 6.0 course or experience with the application.



**FOCUS ON FACULTY**

**INTRODUCTION TO ADOBE PERSUASION 3.0 FOR THE MACINTOSH**  
**Nov 8**

**Prerequisites:** Foundations of Computers course or knowledge of file management on the Macintosh, and mouse skills. Please bring an outline of a class or a document you would like to transform into a presentation.

# Grand Opening

*Seminars, poetry readings/performances, receptions honoring former faculty members highlight the opening of The Black Studies Center Nov. 7 and 8.*

Anyone who has ever moved at least once — whether across town or across country — can attest to the time, energy and effort the venture takes. This summer, Julius Thompson got a double dose of the experience. First, he moved from Carbondale, Ill., to Columbia to begin duties as director of the Black Studies Program on June 1. Then, within three months, he helped his staff load up the office and move from their old quarters in Arts and Science Building to renovated and expanded space in Gentry Hall. At 3,600 square feet, the new area gives the program roughly 2,650 more square footage than what it had. The move is a tremendous boost to the program, Thompson says. "I am happy to be associated with the program and happy with the commitment from the university."

After much reorganizing, decorating and sprucing up, the staff is ready to show

off the fruits of their labor. The unveiling will take place Nov. 7 and 8 in Rooms 313-328. Accompanying the grand opening of the Black Studies Center will be a number of academic and social events — all free and open to the public — that will draw attention to the Black Studies Program, which has existed on campus for 26 years. "I think this will be a significant event, almost like a mini black history month," Thompson says.

Here's the lineup of events:

**Nov. 7**

(All events are in Rooms 210-202 Memorial Union unless otherwise noted)

■ Poetry reading from noon to 1 p.m. by Julius Thompson and Jerry Ward Jr. of Tougaloo College, a visiting professor at the University Memphis.

■ Performance poetry from 1:15 to 2:30 p.m. by Slam Poets from Cleveland State University.

■ An assessment of the area of black studies and suggestions for dealing with special concerns of African American men, women and children will be conducted from 3 to 4:30 p.m. by Deidre Badejo of Kent State University, William Nelson of The Ohio State University, Julius Thompson, Jerry Ward Jr. and Robert Williams of Washington University in St. Louis. Abdullahi Ibrahim of MU's history department will coordinate the discussion.

■ A reception in honor of the late Walter C. Daniel, and the official opening of the Daniel Resource Center takes place at 5 p.m. in Room 323 Gentry Hall. Daniel was a professor of English, the campus' first vice chancellor and an interim director of black studies.

■ Members of the city mayor's task

force on race relations will present a symposium at 7 p.m. at the Frederick Douglass High School Auditorium, 310 N. Providence Road. Sharon Wright of MU's political science department will serve as coordinator. Panelists are: Mayor Darwin Hindman; Gary Oxenhandler, attorney, task force co-chair; Al Plummer, director, Missouri Human Rights Commission, task force co-chair; Robert Bailey, assistant dean of the Law School; Angela Bartee, assistant to the president, Stephens College; and Monica Naylor, director of multicultural education, Columbia public schools.

**Nov. 8**

■ Open House from noon to 1:30 p.m. in Room 313A Gentry Hall.

■ Brown Bag Lunch and Student Panel from noon to 1:30 p.m. in Room 323 Gentry Hall.

■ At 2 p.m., Joyce Ladner of Howard University in Washington, D.C., will deliver the keynote address in Ellis Auditorium.

■ Rounding out the two-day event is a reception in honor of Arvarh Strickland from 5 to 6:15 p.m. in Room 313A Gentry Hall. Strickland, who retired in January as professor emeritus of history, was a founder of the Black Studies Program and served twice as interim director. The first African-American faculty member at MU, Strickland began teaching on campus in 1969. At the reception, Interim Chancellor Richard Wallace is scheduled to announce that the University has set up the Arvarh Strickland Endowment in Black American History and Culture.

■ Books by black studies faculty members and affiliates will be on display in November at the Black Culture Center,

823 Virginia Ave.; first floor Ellis Library; University Bookstore in Brady Commons; and at the Walter Daniel Resource Center in Room 323 Gentry Hall.

## CLASSIFIEDS

### SERVICES

A Marriage Encounter Weekend is coming to Columbia, November 8-10, 1996. Weekend concepts focus on improving communication and strengthening good marriages. Call Rich and Carol at 657-9685.

Ph.D. in English with twenty years college teaching, experienced in editing. Will edit books, proposals, dissertations, articles, major papers or presentations. Telephone (573) 445-6690 during normal business hours.

### FOR RENT

QUIET COUNTRY LIVING. Two bedroom trailer. Trash pick-up, water and heat furnished. \$350 plus deposit. Prefer couples. No pets. (573) 445-4031.

The Classified Advertising Section is open only to faculty and staff members and retirees. A home phone number is required in all classified ads. No refunds will be given for cancelled ads.

Ads must be typed. Rates: 30-word maximum \$5. Publication deadlines: noon on Thursday of week prior to publication.

Mizzou Weekly Classifieds: Make your check payable to University of Missouri and send to: Mizzou Weekly, 407 Reynolds Center, Attention: Tanya Stitt.

THE RECRUITING STAFF KNOWS THAT THE STUDENTS **we** WORK WITH TODAY BECOME THE STUDENTS **you** WORK WITH TOMORROW...

BECOME A **FASTracker** AND HELP RECRUIT THE BRIGHTEST STUDENTS TO **MU!**

Get on board now!



CALL Admissions AT 882-2456 TO LEARN MORE ABOUT HOW YOU CAN GET INVOLVED!

Add an Additional

# 1/4%

INTEREST

on any new CD (Certificate of Deposit)

Regular • IRA • PD CD

## Tuesdays only

Hurry! Limited time offer!

1st & Broadway • PO Box 1795 • Columbia, Mo. 65205-1795  
Phone: 874-1477 • (800)451-1477 • Fax: 874-1300

Monday - Thursday  
Friday  
Saturday

7:30 a.m. - 5:30 p.m.  
7:30 a.m. - 6:00 p.m.  
9:00 a.m. - 12:30 p.m.



MIZZOU CREDIT UNION

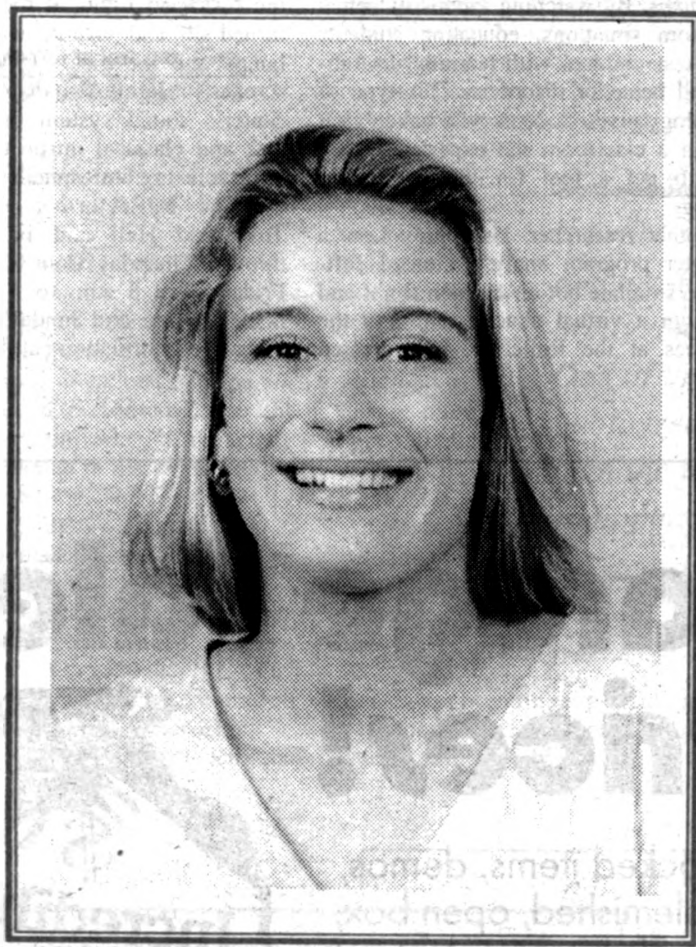
...meeting our members' needs

Faculty, staff, retirees, students and their families are eligible to join. Call for membership eligibility requirements today.

Your Accounts Federally Insured By



*Ellis Library Copy Service Salutes*  
**THE PRIDE OF MU**  
*Scholar-Athlete of the Week*



*Julie Davidzuk*

3.484 GPA  
Sport: Swimming/Diving  
Major: Physical Therapy  
Hometown: St. Louis, Missouri

*Whom do you admire most, and why?*

“ I ADMIRE PEOPLE WHO ARE UNIQUE, PEOPLE THAT STAND OUT IN A CROWD AND DARE TO BE DIFFERENT. I ALSO ADMIRE PEOPLE WHO ARE CREATIVE AND WITTY—THEY ARE A PLEASURE TO BE AROUND AND CAN BRING A SMILE TO ANYONE’S FACE. ”

*Julie Davidzuk*

*What has been your proudest moment at MU?*

“ BEING ABLE TO REPRESENT THE UNIVERSITY OF MISSOURI SWIMMING AND DIVING TEAM AT THE BIG EIGHT CONFERENCE HELD IN OKLAHOMA CITY LAST FEBRUARY. ”

**95¢ Full-Color Copies**

with the presentation of this coupon to

**Ellis Library Copy Service**  
115 Ellis Library • Columbia, Mo. 65201  
Phone: (573) 882-7262 • Fax: [573] 884-5004

Mon. thru Thurs. 7:30 a.m. to midnight • Friday 7:30 a.m. to 11 p.m. • Saturday 9 a.m. to 9 p.m. • Sunday noon to midnight  
Full Color Copies • Book Retrieval • 18 Colored Paper Choices

# Reflective learning

*The Reflector, the College of Education's newest endeavor, opens its doors to new concepts in teaching and learning.*

Learning is taking on a new look at the Reflector, the College of Education's technology and curriculum resource center. The center, which opened on August 19, is decorated with brightly colored banners, halogen lamps, bean bags and green plants to encourage visitors to linger, says Laura Diggs, coordinator of educational technology. "We want to make it easy for people to come in and hard for

them to leave," she says.

While inside, visitors have access to hundreds of resources in the form of reference books, teachers' manuals and electronic files. However, technology is the main thrust of the project. With resources like Macintosh and IBM-compatible computers, scanners, color printers, video conferencing and quick-take digital cameras, visitors can create everything from portfolios to personal World Wide Web pages. "It's like a library of the 21st century," says Diggs.

Like any good library, there is always someone around to help out. Reflector staff members are encouraged to teach visitors basic computer functions and advanced software applications. "The emphasis is on teaching people to do it themselves, not doing it for them," says Diggs.

The theory behind it all is reflective teaching, a practice in which educators step back and "reflect" on their methods and then collaborate with other educators to find better solutions and techniques. Though it is open to all disciplines and the

entire community, the Reflector focuses on helping College of Education faculty use technology. Faculty members can check out video cameras, multi-media equipment and laptop computers, including Macintosh Power Books, made famous by Tom Cruise in this summer's hit movie, *Mission Impossible*.

Several faculty members have designed unique projects using the technology available at the Reflector. Gail Ludwig, associate professor of geography, created a simulated classroom environment stored on laser disks. By watching videos of actual classroom situations, education students can assess children with learning disabilities and behavior disorders. This type of technology gives students who haven't yet been in a classroom the experience they need to get a feel for teaching, says Ludwig.

Another researcher, Humphrey Loe, a computer program analyst, created software to simulate hot-air balloon flight and to design a virtual abacus. Through the resources at the Reflector, Loe created

"Flight, An Adventure in Hot Air Ballooning." This interactive compact disk includes footage from the mid-Missouri national hot-air balloon championships, explanations of what it takes to fly a balloon and a general vocabulary section. The virtual abacus allows viewers to practice their math skills on a modern version of the ancient counting machine.

Many other projects are under construction at the Reflector. One new development is called "Reflector After Dark." On weekday evenings starting at 5 p.m., the overhead lights at the center will be turned off and visitors will rely on desk lamps and the glow from the computer screens for light. Also during this time, the center's sound system broadcasts blues, jazz and classical music to help create a more relaxing atmosphere.

The Reflector is located in 100 Townsend Hall and is open Monday through Thursday from 8 a.m. to 8 p.m., Friday from 8 a.m. to 5 p.m., Saturday noon to 5 p.m. and Sunday noon to 10 p.m. For more information call 882-3279.

## Commencement Regalia Deadline Nov. 6th

Stop by University Bookstore in Brady Commons and place your order for December commencement. Questions? Call 882-7611.

**Jostens Regalia Fair Nov. 4 - 6**

Meet the reps from Jostens and let them serve you!



### What's really scary?

Not being prepared for your little ghouls and goblins.

**Stop by today for these last minute Halloween items!**

**UNIVERSITY BOOKSTORE**

University owned and operated since 1899.



Main Level Brady Commons  
882-7611 TDD: 882-3985  
M-Thurs: 8-7, F: 8-5, Sat: 10-5

UNIV. STORES ON THE WEB:  
[www.ustores.missouri.edu](http://www.ustores.missouri.edu)



MU Faculty, Staff, and Retirees receive a 10% discount on almost everything we sell!

# "Garage Sale" Prices!

Over-stocked items, demos, slightly blemished, open box, and out of date products at "Garage Sale" prices!



## TWO DAYS ONLY!

### Oct. 31 - Nov. 1

9 a.m. - 3 p.m.

Many items one of a kind - come in early for best selection.

A complete list of items is available at Computer Spectrum and on our web site.

## COMPUTER SPECTRUM

Main Level Brady Commons  
882-2131 [www.ustores.missouri.edu](http://www.ustores.missouri.edu)  
M: 9-7, Tu-Th: 8-7, F: 8-5, Sat: 10-5

# MIZZOU

WEEKLY

Publications and Alumni Communication  
407 Reynolds Alumni and Visitor Center  
Columbia, MO 65211



University Libraries  
University of Missouri

### Digitization Information Page

Local identifier                      MizzouWeekly(print)

### Source information

Format                                      Newspaper  
Content type                                Text with images  
Source ID                                   Duplicate copies University Archives weeded out  
Notes

### Capture information

Date captured                              July-December, 2022  
Scanner manufacturer                      Plustek OpticBook  
Scanner model                                A300 Plus  
Scanning system software                    Book Pavilion  
Optical resolution                            600 dpi  
Color settings                                8 bit grayscale for majority of pages;  
    24 bit color for color illustrations/portraits/photographs  
File types                                      tiff  
Notes

### Derivatives - Access copy

Compression                                Tiff: LZW compression  
Editing software                              Adobe Photoshop 2022  
Resolution                                    600 dpi  
Color    same as captured  
File types                                      pdf created from tiffs  
Notes    Images cropped, straightened, and brightened.