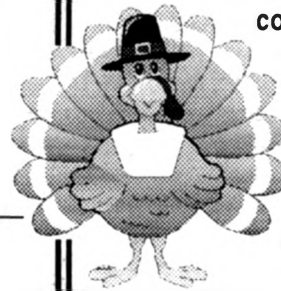


# MIZZOU

## WEEKLY

University of Missouri-Columbia Nov. 20, 1997



Like the rest of the University community, the staff of *Mizzou Weekly* will be taking a break for turkey time. *Mizzou Weekly* will not publish Nov. 27, but we'll return with two more editions this semester on Dec. 4 and 11.

As chancellor, Richard Wallace says his goal is to improve research and graduate education while strengthening undergraduate programs.

Rob Hill photo

## The right choice

*Richard Wallace is named permanent MU chancellor.*

Calling it the "hardest job I've ever had," Richard Wallace accepted the permanent position as MU chancellor. The announcement came at a news conference Nov. 14 with the Board of Curators and UM System President Manuel Pacheco. Wallace has served as interim chancellor since July 1996.

"I look forward with great anticipation to providing the leadership necessary to move this magnificent university vigorously ahead," Wallace said as he



thanked his supporters. "Having been here now for 31 years, there's really no other way to put it — I love this place."

Pacheco said he was pleased with the outcome of the search process. "I know all of us are going to enjoy working with Dr.

Wallace. He has the right values, he has the right objectives, he has the right attitude," Pacheco said.

Curators President Malaika Horne said that Pacheco recommended Wallace's appointment and curators voted unanimously to accept that recommendation. "The University of Missouri is most fortunate to have been the beneficiary of Dr. Wallace's great talent since he joined the economics department as a junior faculty member here at MU 31 years ago," Horne said. "Dr. Wallace has been called upon to serve in many important University positions during the intervening three decades. He has done so with great skill and effectiveness. As recent developments confirm, he enjoys deep, widespread confidence both on and off campus and among a variety of interest groups.

"He has learned in the past 15 months just how demanding the job of chancellor of MU can be. The curators have learned during the same 15 months that he is a most effective campus chief executive officer."

Pacheco said that several factors led to his recommendation. "I think that there was a level of stability that existed on the

MU campus that just simply was crucial in the transition that was occurring," he said. "I was very impressed with Chancellor Wallace's approach to resolving very touchy situations. He didn't necessarily accept the easy answer at the outset. He took the time and the energy to find out in depth what the real issues were before making a judgment."

A second factor, Pacheco said, was watching Wallace work with external groups. "His ability to be diplomatic, but firm, in his positions on behalf of MU were quite impressive in circumstances where it would have been easy to simply keep quiet," he said. "I knew from those discussions that it was going to be easy to know immediately what his position was, and that it was going to be a reasoned position."

Wallace said he continually reminds himself of a statement he made when he took over as interim chancellor: "You don't accomplish anything by yourself. You work as a team; you work together. To do that, there has to be respect and trust, and you earn that day by day. I'll be mindful of that. I'll try to earn your respect, trust and support one day at a time."

## Celebrating an old tradition and a renewed direction

A weeklong celebration surrounding the 75th anniversary of Memorial Tower culminates tomorrow with the unveiling of a plaque honoring MU's students, faculty and staff who have lost their lives in international conflicts since World War II.

The entire community is invited to the war memorial dedication ceremony in Stotler Lounge, first floor north side, says Vicki Cawley, assistant director of Memorial Union. "Congressman Ike Skelton — whose father was student body president when the tower was built — will speak at 1 p.m.," she says. "Afterward, we are having a reception in the Scatter Lounge that not only commemorates the anniversary of the tower, but celebrates the union as a whole." The reception will take place in the open area between Stotler Lounge and Union Square.

Today's students may not have an idea of why Memorial Union was built, says David Roloff, marketing manager for student auxiliary services. "It is easy to walk through the tower archway and not notice the historic message chiseled into the walls," he says. "For most students the union has evolved into more of a meeting and retail-oriented destination."

The idea for a memorial building surfaced during the dark days of World War I, as word of the deaths of former students reached campus. When

construction began in 1922, no one dreamed it would take four decades to finish, but legal entanglements and money problems dictated that the structure be built in stages.

The tower, regarded as one of the finest works of Gothic architecture in the nation, was dedicated on Nov. 20, 1926, during Homecoming. Chiseled on the archway's walls are the names of 116 of MU's students who died in the First World War.

Fall '52 saw the opening of the union's north wing; and a decade later, the south wing opened. In October 1963, Memorial Student Union was dedicated, 47 years after the idea was born. Bronze plaques bearing the names of 338 of MU's sons who lost their lives in World War II hang on the walls inside the foyer of the north wing.

"The Memorial Union is a huge landmark and symbol of tradition and pride at the University, and to have a building like that on campus means a lot," Cawley says. "It's exciting to have this anniversary come when it does because of all the renovations that we have had in the past few years and the revitalization of the union in the past year."

Renovations to different parts of the union began a couple of years ago; however, the biggest of these occurred on the north side with the refurbishing of

Stotler Lounge, the opening of Union Square and Applause Coffeehouse, and renovating the cafeteria's space on the lower level for a permanent International Center.

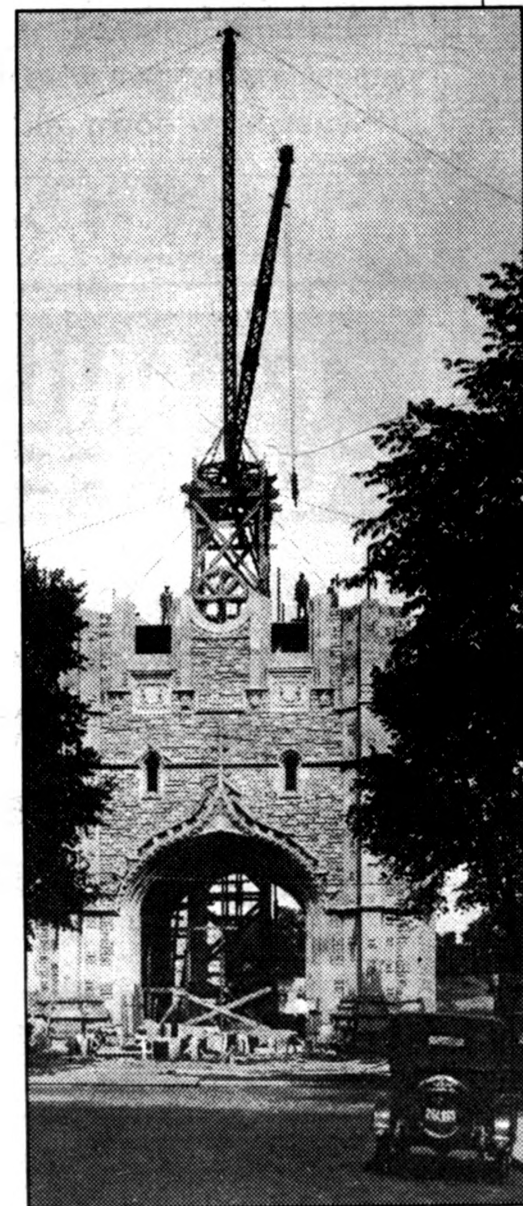
Along with the renovations came a resurgence in programming, spearheaded by the Student Union Programming Board. Speakers, plays, improvisational comedy acts, jazz, movies, dances and dinner theaters are but a few of the events now offered weekly at the union.

The events indicate the renewal of the heritage of the union, which is to regain its position as the center of campus life, Roloff says. For the past two decades, the union offered the community minimal resources other than ballrooms on the north side's upper level and the cafeteria on the lower level. "One of the main goals of the renovation was to give anyone who thought Memorial Union had lost its luster a reason to use the facility again," Roloff says.

Cawley agrees. "The anniversary celebration is a way of looking back with pride on the union's past history as well as celebrating all of the good things that have happened in the past year," she says. "We are here to serve the campus community and we'll do it by increasing our activities and events."

The cornerstone of Memorial Tower was laid Nov. 30, 1922. Dedicated in 1926, it was the only part of the Memorial Student Union Building to be completed before the Depression.

photo courtesy of University Archives



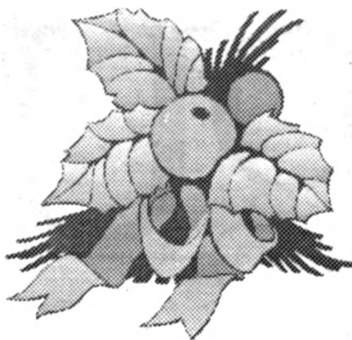
**THERE'S STILL TIME TO MAKE A CHANGE**

It's not too late, but the deadline is getting close. University faculty and staff have until tomorrow, Nov. 21, to make any changes to their benefit package. Information packets and forms have been sent to all benefit-eligible employees.

During the enrollment change period, faculty and staff can modify their coverage for: medical and dental insurance, life insurance, dependent life insurance, long-term care and long-term disability, as well as accidental death coverage.

To maintain their current benefit plan, faculty and staff need not fill out an enrollment form; they

automatically will be reenrolled at their current level. That's not the case, though, for University employees who take part in the Flexible Spending Account program. They must reenroll for the accounts each year. Enrollments for the flexible spending program will be accepted until Dec. 31, however employees are encouraged to submit their enrollments as soon as possible.



**CHRISTMAS CHEER**

The holiday season is blooming at Mizzou. There'll be plenty of the green stuff available on campus during the first week of December. Nope, not the green stuff you spend at the mall. We're talking about a little more traditional type

of greenery — Christmas trees. And the green stuff you spend will go to help out those groups' programs.

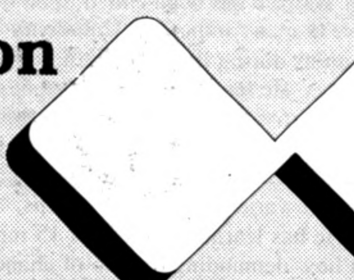
The Mizzou Forestry Club will offer locally grown and fresh-cut trees from 8 a.m. to 8 p.m. Dec. 4 to 7 on the east side of Faurot Field. The club also offers holly, mistletoe, pine cones, pine roping and boughs, along with plain or decorated wreaths. Campus departments can have trees treated with fire retardant delivered to campus offices during the advance sale period; for information, call 882-7242.

If traditional Christmas poinsettias are what you're looking

for. There will be two opportunities to purchase the holiday blooms. The MU Horticulture Club will hold its annual poinsettia sale from 8 a.m. to 5 p.m. Dec. 4 and 5 at the club's greenhouse, just west of the Chemistry Building. Poinsettias in all sizes and colors will be available with prices franging from \$2.50 to \$25. The Ellis Fischel Cancer Center Auxiliary will hold its annual poinsettia sale from 7 a.m. to noon Dec. 4 and 5 in the hospital's lobby.

**Parking & Transportation Services**

Turner Avenue Garage  
Level 2  
882-4568



**Vehicles must yield to pedestrians!**

In response to pedestrian safety concerns, the UMPD has taken measures to increase enforcement of crosswalk violators.

A radar unit with certified officers is being utilized in selective areas to slow traffic. Hospital Drive, East Campus Drive, Hearn, University Avenue, 6th Street and the parking garages are being targeted.

**Please slow down and yield to pedestrians.**

**So long piggy bank, it's hello Wall Street**

It's not just a matter of dropping coins in a piggy bank any more. For today's investment-conscious families, it makes sense to help children learn about savings through mutual funds, says Craig Israelsen, associate professor of consumer and family economics and an expert on mutual funds.

Through some funds available today, parents can invest \$50 a month or less in a child's account, Israelsen says. "While traditional bank savings accounts are still viable ways to put aside money for a child's future, the returns achieved through mutual funds are much greater."

The only downside to investing in a child's account could be the impact it may have years later when the child applies for student financial aid to help

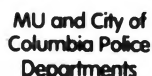
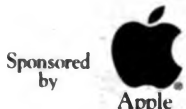
pay for college. Yet Israelsen downplays this concern, noting that financial aid rules could change in coming years.

"And if a parent plans well, the child may not need financial aid," he adds. "The benefits are numerous. It gives the kids a sense of ownership, encourages them to make their own contributions, and helps them take saving more seriously."

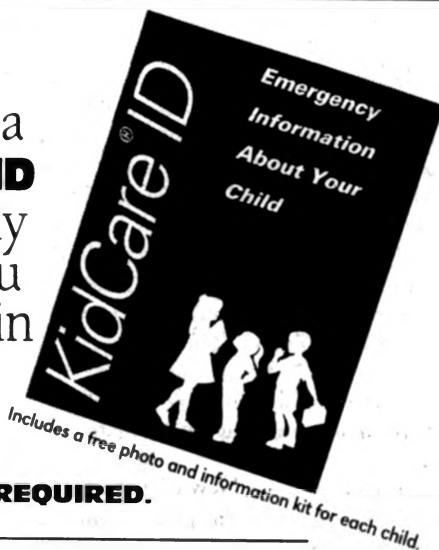
Israelsen points out that parents can invest more aggressively in their children's accounts since they are depositing money for the long term. "Length of investment is key," he says. "With young kids, you're going into a long-term investment, which makes day-to-day stock market performance much less relevant."

**FAMILY FUN FEST**

**Saturday  
November 22  
10 am - 4:30 pm  
Main Level  
Brady Commons**



Bring your children in for a **FREE KidCare ID Kit**. It takes only minutes for you to be prepared in case of an emergency.



**FREE! NO PURCHASE REQUIRED.**

**PLUS:**

Kids under 7 bowl free at T.A. Brady's. The rest of the family bowls for only \$1/hr (Two lanes devoted to padded toddler bowling!)

Safety information and children's fingerprinting from MU Police and City of Columbia Police and Fire Departments.

Visit with Santa from Noon to 2 pm.

Free balloons and other treats for every child.

Great discounts on children's computer software, Mizzou sportswear for all ages and children's books.

**MIZZOU WEEKLY**

Volume 19 Number 13

A publication for University of Missouri-Columbia faculty and staff, published every Thursday during the academic year and twice a month during the summer by Publications and Alumni Communication, a department of University Affairs, 407 Reynolds Alumni and Visitor Center, 882-7357. News deadline is noon Thursday the week before publication. Annual subscriptions are available for \$20.

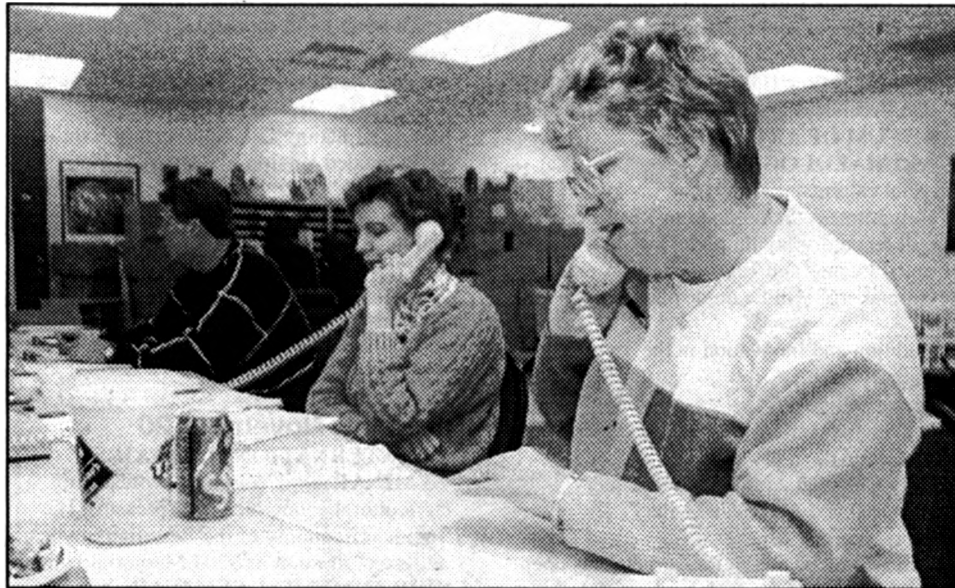
Editor . . . . . John Beahler  
Graphic editor . . . . . Sue Richardson  
Director of advertising . . . . . Tanya Stitt  
Photographers Nowland Bamard III, Rob Hill, Nancy O'Connor  
Assistants . . . . . Amy Elsner, Jennifer Hartmann



Printed with soy ink on recycled newsprint containing 90 percent to 100 percent post-consumer waste.



# Bowl-bound



Nancy O'Connor photo

From right, MU Alumni Association staff Sue Arnold and Carrie Lanham, and Harry Lunt of Dodds Athletic Tours, answer questions from alumni and fans about making reservations for Mizzou's first bowl appearance since 1983.

The phone has been ringing off the hook down at the MU Alumni Association. That's because as Mizzou awaits word on a possible bowl appearance this season, Tiger fans are eagerly preparing their travel plans to show support for Coach Larry Smith and his Tiger squad.

The alumni association wants to make sure that Mizzou fans don't miss the boat — or the plane. The association has created a special hotline to assist fans with bowl travel arrangements. In conjunction with the athletic department and Dodds Athletic Tours, the association has begun accepting reservations for the official travel packages to the Holiday, Alamo and Aloha bowls.

Alumni association staff along with campus volunteers have been manning the phones since Monday, when they logged more than a thousand calls, according to Todd Coleman, the association's executive director. Hotline workers still are fielding hundreds of calls a day. "People are saying, 'We're going to follow the Tigers anywhere,'" Coleman says, and adds that the action probably will get frantic next Monday after this weekend's football games give a clearer picture of where the Tigers might play their first post-season game since 1983.

Although the exact location may not be determined for several weeks, fans may reserve a place for any or all of the possible locations. The hotline number in Columbia is 882-2155. Fans who live outside Columbia can call toll-free (888)

TGR-BOWL. Three University-approved local travel agencies also will accept official bowl package reservations. To purchase game tickets only, call (800) CAT-PAWS.

"We hope this year will be the beginning of a post-season tradition for Mizzou fans to enjoy for many years to come," Coleman says.

## MARK YOUR CALENDAR!

### Faculty & Staff Appreciation Night: Thurs. Dec. 4th

5:30-8:30 p.m.

- 20% off almost everything in the store
- Plenty of holiday refreshments
- Bring the family to visit with Santa
- Prizes including a portable color TV!



## University Bookstore

Main Level Brady Commons 882-7611  
TDD: 882-3985 [www.ustore.missouri.edu](http://www.ustore.missouri.edu)  
Open: Mon-Thurs: 8-7, Fri: 8-5, Sat: 10-5

A University owned and operated bookstore serving the Mizzou community since 1899.



# Learning to live with diabetes

## Sixth annual Diabetes Day "A new perspective on diabetes"

Sunday, Nov. 23  
1 - 3:30 p.m.

University Hospital and Clinics  
Cosmopolitan International Diabetes Center

This free event offers important information on managing diabetes. It includes:

- ▶ Holiday cooking demonstration
- ▶ Information on new medications
- ▶ Information about the latest research
- ▶ Free foot screenings
- ▶ Diabetes information on the Internet
- ▶ Door prizes
- ▶ Activities and educational booths

Experts from the MU Health Sciences Center will present the following seminars:

- 1:15 p.m. New diabetes medications, Dr. David Gardner
- 2 p.m. The latest in diabetes research, Dr. George Griffing
- 2:45 p.m. Holiday meal ideas, Karen Derrick and Jennifer Polniak

Free parking is available in the garage located on the east side of University Hospital. Please call (573) 882-6565 for more information.

University Hospital and the Cosmopolitan International Diabetes Center have been awarded recognition by the American Diabetes Association in accordance with the National Standards for Diabetes Patient Education Programs.

## "The changing face of diabetes: New weapons and new attitudes"

Thursday, Nov. 20  
Reception 6:30 p.m.  
Presentation 7 p.m.

Cosmopolitan Community Center  
1715 Burlington in Columbia

Join us for a reception to meet Dr. Fred Whitehouse, professor of medicine, Case Western Reserve University Medical School at Henry Ford Hospital in Detroit. Following the reception, Dr. Whitehouse will talk about the future of diabetes care.

The reception and presentation are free and open to the public. For more information, please call (573) 882-2273.

Sponsored by the Cosmopolitan Clubs of Columbia, Cosmopolitan Club of Jefferson City and the Cosmopolitan International Diabetes Center.



University of Missouri  
Health Sciences Center  
*The Staff for Life*

**Post-it  
Tape Flags**  
now available in:  
**GREEN, YELLOW,  
RED, and BLUE**

Stk No. **0631A**  
**\$1.20/50 flags**

General Stores

# CALENDAR

Send calendar items by Campus Mail to  
Mizzou Weekly Calendar, 407 Reynolds Center,  
by noon Thursday the week before publication.  
Events are free and open to the public unless otherwise noted.

## Concerts & Plays

### Thursday, November 20

**UNIVERSITY BAND SERIES:** The Symphonic Band and Jazz III will perform at 8 p.m. in the Missouri Theatre. Cost: \$5; for ticket information, call 882-3438.

### Saturday, November 22

**UNIVERSITY CONCERT SERIES:** The University Choral Union and University Philharmonic will present an all-Brahms program that features *The German Requiem* at 8 p.m. in Jesse Auditorium. Call 882-3781 for ticket information.

### Sunday, November 23

#### STUDENT RECITALS:

- Matt Wood will perform on trombone at 4 p.m. in Whitmore Recital Hall.
- The vocal jazz ensemble Hitt Street Harmony will perform at 8 p.m. in Whitmore Recital Hall.

### Monday, November 24

**FACULTY RECITAL:** Steven Geibel, associate professor of music, will perform on flute at 8 p.m. in Whitmore Recital Hall.

### Saturday, November 29

**UNIVERSITY CONCERT SERIES:** The Nebraska Theatre Caravan will perform *A Christmas Carol* at 8 p.m. in Jesse Auditorium. For ticket information, call 882-

3781.

### Thursday, December 4

**THEATER SERIES:** The Department of Theatre will present *The Angeles Crest* through December 6 at 8 p.m., December 7 at 2 p.m. and December 8-10 at 8 p.m. in Rhynsburger Theatre. For ticket information, call 882-PLAY.

### Saturday, December 6

**UNIVERSITY CONCERT SERIES:** The St. Petersburg Ice Ballet will perform *Swan Lake* at 2 p.m. and 7 p.m. in Jesse Auditorium. For ticket information, call 882-3781.

## Conferences

### Friday and Saturday, November 21-22

**PREOPERATIVE NURSING CONFERENCE:** The 1997 Midwest Regional Nursing Conference will take place at the Ramada Inn. For registration and cost information, call 882-0215.

## Exhibits

**ART FOR LIFE:** The exhibit features works by faculty of the MSA/GPC Craft Studio in book arts, clay, glass and photography through Jan. 5 in the lobbies of University Hospital and Clinics and Ellis Fischel Cancer Center.

## MUSEUM OF ANTHROPOLOGY:

"Photography by Eldon Leiter: Ancient Maya Art and Architecture" is on display. The museum's exhibits focus on Native American cultures and the history and prehistory of Missouri. The museum, located in 100 Swallow Hall, is open from 9 a.m.-4 p.m. weekdays and 10 a.m.-3 p.m. Saturday.

## MUSEUM OF ART AND ARCHAEOLOGY

### Special exhibits:

- "Commitment: Fatherhood in Black America" will be on display through Dec. 14
- Printed Images and Texts of Renaissance Nuremberg" will be on display through Feb. 1

- "Tradition and Innovation in the Twentieth Century"

### Ongoing exhibits:

- "The Saul and Gladys Weinberg Gallery of Ancient Art"
- "Early Christian and Byzantine Gallery"
- "European and American Gallery"
- "Expressions of Africa"

The museum, located in Pickard Hall, is open from 9 a.m.-5 p.m. Tuesday-Friday, 6-9 p.m. Thursday and noon-5 p.m. Saturday and Sunday.

## MSA/GPC CRAFT STUDIO GALLERY

Paintings by Travis McElhany will be on display through December 11 at the gallery in Brady Commons.

## ELLIS LIBRARY SPECIAL COLLECTIONS

"Pioneer Polar Explorations," an exhibition of the book collection of Robert Spier, will be on display from 8 a.m.-9:30 p.m. Monday-Thursday, 8 a.m.-5 p.m. Friday and noon-5 p.m. Saturday and Sunday through December 15.

## STATE HISTORICAL SOCIETY

- Paintings by the late Lawrence McKinin, an MU art faculty member from 1948-1979, will be on display in the gallery through December. The gallery is open weekdays from 8:30 a.m.-4:30 p.m.
- Paintings, prints and drawings from the society's Contemporary Missouri Artists Collection is on display in the north-south corridor through December. The exhibit is of artists who have worked in Missouri or have Missouri as their subject.
- "Decades: 1887 to 1977, Editorial Cartoons" is on display through December in the east-west corridor.

The corridors are open weekdays from 8 a.m.-4:30 p.m. and 9 a.m.-4:30 p.m. Saturday.

## MU ARCHIVES

- "Tip Your Hats, Boys," an exhibit celebrating the 75th anniversary of the building of Memorial Union tower, is on display in the union's south wing lobby through Dec. 22.
- "Learn by Doing," an exhibit on agricultural clubs for Missouri girls, is on display in the seventh floor lobby of Lewis Hall through Nov. 28.
- "Memorial Union 75th Anniversary Exhibit," an expanded version of "Tip Your Hat, Boys" and "Getting Physical," an exhibit on women's athletics at MU, is on display online at <http://www.missouri.edu/~archwww/news&c.x.html>

## Lectures

### Thursday, November 20

#### GIST INTERNATIONAL AFFAIRS

**SEMINAR:** Phil Warnken, professor of agricultural economics, will present "The Political Economy of the Brazilian Soybean Industry" at noon in S204 Memorial Union.

**ENVIRONMENTAL SEMINAR:** Xihui Zhang, post-doctoral fellow in chemical engineering, will present "A Self-Organizing Model on Cometary Biodegradation of Chlorinated Solvents" at 10:40 a.m. in E3511 Engineering Building East.

**NUTRITIONAL SCIENCES SEMINAR:** Richard Dowdy, associate professor of nutritional sciences, will present "Magnesium and Aging" at 3:40 p.m. in 209 Gwynn Hall.

**DIABETES LECTURE:** Fred W. Whitehouse, professor of medicine at Case Western Reserve University Medical School, will present "Diabetes: What Happened in the 20th Century; What Can We Expect in the 21st?" at 7 p.m. in the Cosmopolitan Community Center. Call 882-2273 for more information.

**PEACEWORKS LECTURE:** Patrick Akinbola, a Nigerian human-rights activist will present a discussion on that country's internal struggles and will screen a new documentary, "In Remembrance of Ken Sara Wiwa," at 7 p.m. in 110 Lee Hills Hall.

### Friday, November 21

**CHEMISTRY COLLOQUIUM:** Daniel Comins of North Carolina State University will present "Chiral Dihydropyridones as Intermediates for Alkaloid Synthesis" at 3:40 p.m. in 103 Schlundt Hall.

Continued on Page 6



Bring your department  
to the  
*University*  
C L U B



## Holiday Luncheon

Friday, December 5 ❄️ 11 a.m.-1:30 p.m.

\$9.95 plus tax & service charge

Membership charge, cash & checks will be accepted for this special event.

Carved Beef Striploin with Bordelaise Sauce  
Carved Stuffed Pork Loin with Apricot Thyme Demi Glace  
Turkey Salad with Grapes & Pecans  
Antipasto Mushrooms in Garlic Oil  
Marinated Broccoli Salad  
Cavatelli and Marinara Sauce  
Cauliflower and Broccoli Au Gratin  
Fresh Fruit Salad  
Tossed Greens & Dressings  
Wild Rice Pilaf and Apple Cider  
Vegetable and Pasta Paella  
Dessert Extravaganza  
Tea & Coffee

Reservations ❄️ 882-2586

This event is open to the campus.

## MONEY SAVING OFFER!!



Join the  
Student Recreation Center,  
and get 1-month FREE!!

You work hard for your money, and you need to get the most for your buck. We can help. From now until Nov 26th, everyone who joins the Student Recreation Center and signs up for the payroll deduction plan\* get's one month **FREE!** That's right, **FREE!**

Don't wait any longer. Stop by the Student Recreation Center to join, or call us at 882-2066 for more information. Isn't it time for a healthier, happier you??

University of Missouri - Columbia  
Department of Recreational Services  
320 Student Recreation Center - 882-2066

\* Minimum six-month membership required





### Campus Computing is moving

On **November 24-26, 1997** (the first part of Thanksgiving week), all of Campus Computing, Office of Library Systems, and UM Management Information Systems will be moving into the Locust Street Building (just north of the Heinkel Building, across Locust Street).

During the move we will try to keep the following phone numbers answered as best we can:

Campus Computing Switchboard:	882-2000
Campus Computing Helpdesk:	882-5000
UCS Helpdesk:	882-9227

Watch the Campus Computing home page at <http://www.missouri.edu/cc/> for more details.

## MU Web Showcase

Join the MU's talented web authors on Monday, November 24, for the  
**Third Annual MU Web Showcase**  
Noon to 3:00 p.m., in the Memorial Union Computing Lab.

The World Wide Web is one of the great communications mediums, and one open to everyone with an Internet connection. Tens of thousands of web pages already exist at MU, with the number growing daily. Hundreds of individuals, departments, and organizations on campus find the web an effective and efficient communications medium.

Please join the MU Web Authors' Guild in a celebration of the diverse and creative community of students, faculty, and staff who are forging MU's Web identity. The authors of some of the best pages on campus will be showing off and discussing their work in this year's showcase.

If you're new to the web, take this opportunity to find out what's going on. If you're an experienced user, please join us in this sharing of the techniques and expertise behind some of MU's best departmental, organizational, and individual pages.

For more information, please contact:

Guy Wilson, (573) 882-4668  
[ccguy@showme.missouri.edu](mailto:ccguy@showme.missouri.edu)  
<http://www.missouri.edu/~muwww/guild/showcase97.html>



## GEOLOGICAL SCIENCES

**COLLOQUIUM:** John Encarnacion of St. Louis University will present "The Karoo-Ferrar Flood Basalt Province and the Breakup of Gondwana" at 3:40 p.m. in 108 Geology Building.

## Monday, November 24

**JOURNALISM SEMINAR:** Steve Weinberg, associate professor of journalism, will present "Ideas for Publishing Professional and Teaching Work" at a brown-bag seminar from 12:40-1:30 p.m. in Tucker Forum in Gannett Hall.

## SOIL AND WATER RESOURCES

**SEMINAR:** Patricia Donald, assistant professor of plant pathology, will present "The Role of Nematodes in Soil" at 3:40 p.m. in 133 Mumford Hall.

**GEOGRAPHY COLLOQUIUM:** Edward Lowe, assistant professor of geography, will present "Snakes, Pumas and Condors: Sacred Indian Icons in the Peruvian Landscape" at 4 p.m. in 100 Stewart Hall.

## Monday, December 1

**BIOCHEMISTRY SEMINAR:** Gary Olsen of the University of Illinois will present "Insights Into Bacterial Phonology From Molecular Genome Analysis" at 3:40 p.m. in MA217 Medical Sciences Building.

## SOIL AND WATER RESOURCES

**SEMINAR:** Randall Spautz, research graduate assistant in soil and atmospheric sciences, will present "Crop Response to P and K in Claypan Soils" at 3:40 p.m. in 133 Mumford Hall.

## Tuesday, December 2

**PHARMACOLOGY SEMINAR:** Nam Soo Joo, graduate student in pharmacology, will present "Regulation of Intestinal Chloride and Bicarbonate Secretion by Uroguanylin" at 11:50 a.m. in M558 Medical Sciences Building.

**BIOLOGICAL SCIENCES SEMINAR:** Rex Chisholm of Northwestern University Medical School will present "Myosin Regulatory Light Chain and Cell Motility" at 3:40 p.m. in 18 Tucker Hall.

**NUCLEAR ENGINEERING SEMINAR:** Graduate student Sara Casey will present "Evaluation of Varskin Mod II: Implementation and Recommended Upgrades," and graduate student Matt Walters will present "A Case Study in Dose Assessment for a Code Upgrade" at 4:05 p.m. in E1419 Engineering Building East.

## Wednesday, December 3

**MUSEUM LECTURE:** Debra Page, associate curator of European and American art at the Museum of Art and Archaeology, will present "She is Becoming...In the Art of Leonor Fini" at 12:15 p.m. at the museum in Pickard Hall.

## BIOLOGICAL SCIENCES SEMINAR:

Chris Parkinson of Indiana University will present "Molecular Evolution and Phylogenetics of mt rDNA Genes in Pit Vipers" at 7:30 p.m. in 106 Lefevre Hall.

## Thursday, December 4

**ENVIRONMENTAL SEMINAR:** Scott Burr, graduate student in civil engineering, will present "Modeling of Atrazine Contamination in a Watershed" at 10:40 a.m. in E3511 Engineering Building East.

## GIST INTERNATIONAL AFFAIRS

**SEMINAR:** Euel Blank will present "Helping Russia Enter the 21st Century" at noon in S204 Memorial Union.

## NUTRITIONAL SCIENCES SEMINAR:

Jinming Xia, post doctoral fellow in biochemistry, will present "French Paradox: Fact or Fiction" at 3:40 p.m. in 209 Gwynn Hall.

## CHEMICAL ENGINEERING SEMINAR:

Henry White, professor of physics, will present "New Thin Film Materials" at 3:40 p.m. in W0009 Engineering Building East.

## Meetings

## Thursday, November 20

**FACULTY COUNCIL:** Group meets at 3:40 p.m. in S110 Memorial Union.

## Special Events

## Sunday, November 23

**DIABETES DAY:** November is National Diabetes Month. In recognition of this, MU's sixth annual Diabetes Day will take place from 1-3:30 p.m. at the Cosmopolitan International Diabetes Center in University Hospital's main lobby. Call 882-6565 for more information.

**MUSEUM FAMILY EVENT:** An "inquisitive mind" program for children titled "How Did the Ancients Do That?" will be held from 1-2:30 p.m. in the Museum of Art and Archaeology. Call 882-3591 for more information.

## Saturday, November 22

**FAMILY FUN FEST:** From 10 a.m.-4:30 p.m. in the main level of Brady Commons your child can receive a free KidCare ID Kit, that contains emergency information about your child. Local police and fire departments will provide safety information and fingerprinting for children. Kids under 7 bowl free during the event at T.A. Brady's, and the rest of the family can bowl at reduced rates. There also will be free balloons, a visit by Santa from noon-2 p.m., discounts on children's computer software and books and on Mizzou sportswear for all ages.

## Monday, November 24

**MU WEB SHOWCASE:** The MU Web Authors' Guild will celebrate the diverse and creative community of students, faculty and staff who are forging MU's web identity. Some of the best web pages at the University will be on display from noon-3 p.m. in the Memorial Union Computing Lab. The event's homepage can be found at <http://www.missouri.edu/~muwww/guild/showcase.html>

## Tuesday, November 25

**STUDENT DINNER SERIES:** Hotel and restaurant management students will plan, prepare and serve a gourmet meal at the University Club in the Reynolds Alumni Center. Cost: \$12-\$17.50. For reservations, or with questions, call 884-1828.

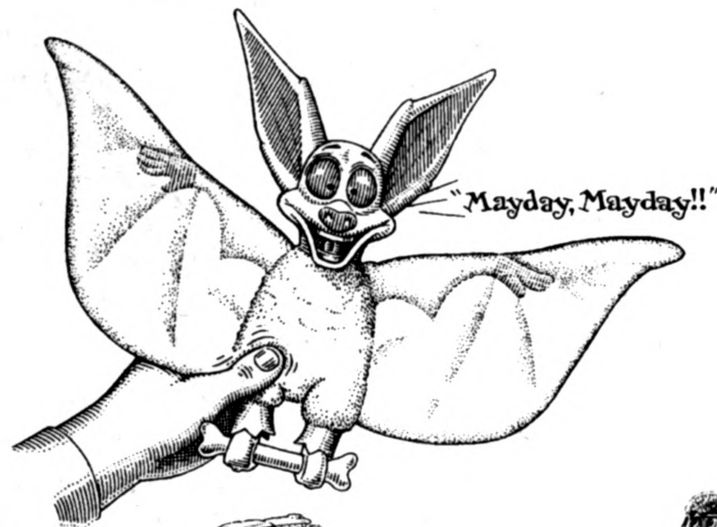
## Monday, December 1

**STATE GAMES SALE:** Show-Me State Games merchandise, such as T-shirts, hats, basketballs and footballs, will be on sale at low prices from 10 a.m.-3 p.m. in the Jesse Auditorium lobby today and tomorrow.

## Wednesday, Dec. 3

**HOLIDAY BOOK SALE:** The University of Missouri Press will offer bargains galore on dozens of their titles, as well as special low prices on more than 2,500 slightly damaged books. The event will feature hourly door prizes and will run from 9 a.m.-6 p.m. at University Press, 2910 LeMone Industrial Blvd. near the intersection of Highway 63 and Route AC. With questions, call 882-0180.

**We could go on and on about our great new toys, but this one speaks for itself.**



Anastasia



Runaway Train



Bartok



Pooka

**Collect all four cool toys from the hit movie Anastasia. Each just \$2.59 with any Value Meal purchase.**

Over lunch, let Bartok the bat do all the talking. His electronic voice chip allows him to deliver three different lines from the new movie Anastasia. And Bartok is just one of the great toys your kids will find at Burger King®. There's also Pooka, whose ears flap when you squeeze him and the battery-powered train set, with its own track! So come into Burger King® now and walk out with a great-tasting meal and a set of toys that'll have everyone talking.

**BRADY**  
FOOD COURT

Mon-Thurs:  
7 a.m. - Midnight  
Fri: 7 a.m. - 6 p.m.  
Sat: 9 a.m. - 4 p.m.  
Sun: Noon - Midnight

**BURGER KING**

Get your burger's worth.™

**Is it too heavy to move?**



**We'll move it for you!**

Call 882-6561 to schedule movers with the Campus Facilities Building Services department. We'll pick up the load for you.

**Campus Facilities**  
BUILDING SERVICES ENERGY MANAGEMENT PLANNING, DESIGN & CONSTRUCTION MAINTENANCE & GROUNDS

# Scholar-Athlete

ELLIS COPY CENTER

OF THE WEEK

Amy Farmer

Sport: Softball

Major:

Elementary Education

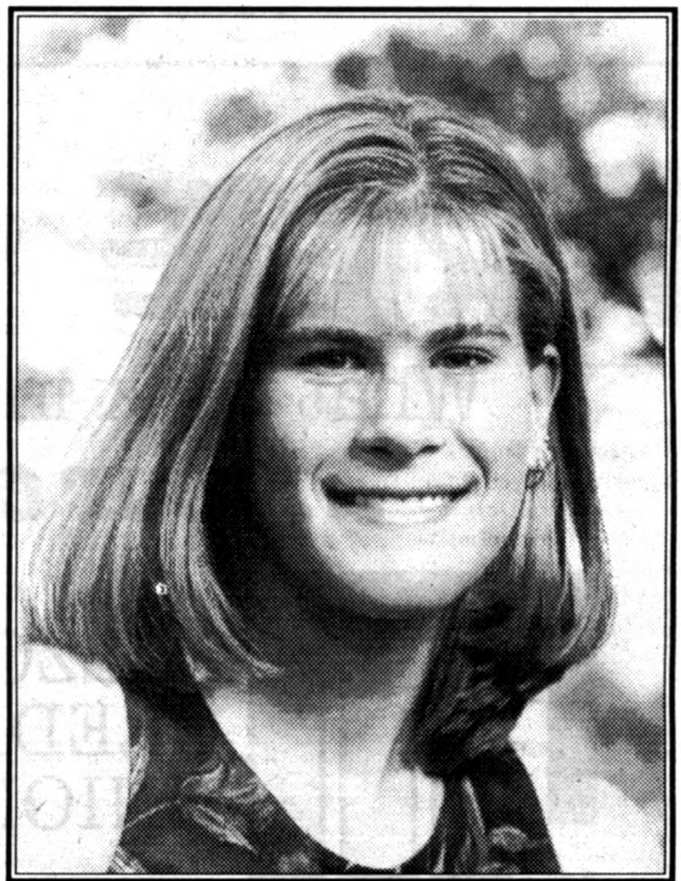
Special Honors:

✓ First team All-Conference

✓ First team All-State

How do you think the academic knowledge and sports experience you have gained at MU will help you in pursuing your future goals?

"I've learned a lot of mental toughness here at MU, and this will help me to pursue my goals because wherever you go in life there are always going to be obstacles and to get through them is all in the mind."



Why was the University of Missouri-Columbia your college choice?

"I loved the team atmosphere and they have a great academic program."

*Amy Farmer*

# 75¢ Full-Color Copies

when you have 5 or more copies made!

This coupon is only good for 8 1/2" x 11" color copies.

## ELLIS LIBRARY COPY SERVICE

115 Ellis Library • Columbia, Mo. 65201-5149  
Phone: (573) 882-7262 • Fax: (573) 884-5004  
<http://copy-service.ps.missouri.edu>

Mon. thru Thurs. 7:30 a.m. to midnight • Friday 7:30 a.m. to 11 p.m. • Saturday 9 a.m. to 9 p.m. • Sunday noon to midnight

Full Color Copies • Book Retrieval • 18 Colored Paper Choices

# Classifieds

## SERVICES

Counseling-Psychotherapy, POS eligible. 25% discount if insurance not used. 28 years experience in MU setting. Confidentiality assured. Don Eggeman, Psychologist, 1205 University Ave., Suite 400. 573-449-6190 for appointment.

## FOR RENT

Faculty member needs to rent furnished house to a responsible

party from January through June or July. 4-5 bedrooms, 3.5 baths. Beautiful house close to campus. Rent negotiable. 449-2740.

3 bdrm, 3 bath apartment in private home; partially or fully furnished near campus and downtown area. No pets. 817-0806.

## FOR SALE

New faculty? 3 bdrm in beautiful 4-plex in the woods. Peaceful, energy efficient, C/A, fireplace, all on one level, W/D possible. Call 445-7398 after 5 p.m.

Old Southwest, 3 bedroom, 2 bath, full basement. Roof, furnace, central air, under 5 years old, hardwood floors.

Recent structural, electrical and plumbing inspection. \$115,000. 874-6765.

The Classified Advertising Section is open to faculty and staff members, and retirees. A home phone number is required in all ads.

No refunds will be given for cancelled ads.

Ads must be typed.  
Rates: 30-word maximum \$5.

Deadline: Noon Thursday of week before publication.

Mizzou Weekly Classifieds: Make your check payable to University of Missouri and send to Mizzou Weekly, 407 Reynolds Alumni Center, Columbia, Mo. 65211. Attention: Tanya Stitt.



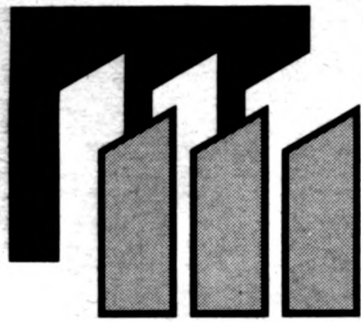
# Mooove

your fingers through the MU  
Telephone Directory Yellow  
Pages to find all the  
information that you need.



# FREE CHECKING

What bank in Columbia can say that?  
...your credit union can!



MIZZOU  
CREDIT  
UNION®

## BASIC CHECKING\*

- NO minimum balance
- NO monthly fee
- NO per check fee
- NO cost overdraft protection

## ALSO FREE

• MCU ATM Card • MCU Call24 • MCU@Home

Your Accounts Federally Insured By



**22 FREE ATMS** in Columbia, including Brady Commons, Jesse Hall, & Stamper Commons

First & Broadway • Columbia, MO • Phone: (573) 874-1477 or (800) 451-1477 FAX: (573) 874-1300 TTY-TDD: (573) 817-5445  
Faculty, Staff, Retirees, Students, Alumni & families are eligible to join. Call for membership information today!

\*Requires \$26 minimum deposit in Basic Savings for membership. Other fees may apply.

MIZZOU  
WEEKLY

Publications and Alumni Communication  
407 Reynolds Alumni and Visitor Center  
Columbia, MO 65211



University Libraries  
University of Missouri

### Digitization Information Page

Local identifier                      MizzouWeekly(print)

### Source information

Format                                      Newspaper  
Content type                                Text with images  
Source ID                                  Duplicate copies University Archives weeded out  
Notes

### Capture information

Date captured                              July-December, 2022  
Scanner manufacturer                      Plustek OpticBook  
Scanner model                                A300 Plus  
Scanning system software                Book Pavilion  
Optical resolution                          600 dpi  
Color settings                                8 bit grayscale for majority of pages;  
    24 bit color for color illustrations/portraits/photographs  
File types                                      tiff  
Notes

### Derivatives - Access copy

Compression                                Tiff: LZW compression  
Editing software                             Adobe Photoshop 2022  
Resolution                                    600 dpi  
Color    same as captured  
File types                                      pdf created from tiffs  
Notes    Images cropped, straightened, and brightened.