

MIZZOU

WEEKLY

University of Missouri-Columbia April 22, 1999

INSIDE THE WEEKLY

Marching Into the Next Millennium: *Mizzou Weekly's* coverage of Staff Recognition Week begins on Page 3

Experience Expo '99

Info extravaganza highlights array of University services.

Sure, you could go just for all the freebies. There'll be plenty of giveaways and door prizes at Expo '99. The hundreds of people who attend the April 28 event at the Hearnes Center have a chance at winning free air travel, six months of free campus parking, and free membership in the University Club or the Student Recreation Center.

But the biggest payback to those who attend might be a better understanding of what services are available from the University and, even more important, how to access them. Expo '99 is an information extravaganza that highlights all the activities of Administrative Services departments.

There will be more than 75 booths filled with information and ideas open to the University community from 9 a.m. to 3 p.m. next Wednesday. Do you have questions

about MU's parking operations, for example? Folks from Parking and Transportation Services will be on hand to explain everything from parking options for employees to arranging visitor parking for your department's events.

Representatives from Printing Services will be there as well to explain how they can meet any of your printing needs, from high quality, five-color printing to quick photocopies. To showcase their quality work, Printing Services will be giving away posters of a work by local artist Alice deBotton. The 92-year-old artist will be on hand for a portion of the day to sign her work.

In case you get the munchies, the Hearnes Center concession stands will serve up a variety of snacks. The University Club's chef, Daniel Pliska, will demonstrate his culinary prowess by creating a fajita bar, with free samples available.

Plan on attending the expo over the lunch hour, and enjoy the Staff Advisory Council's annual fashion show from noon to 1 p.m. as part of the Staff Recognition Week celebration. And here's one last freebie: parking for faculty and staff who attend Expo '99 is free in the Hearnes Center lot.

A MESSAGE FROM THE CHANCELLOR

Dear MU Staff:

MU's 20th Annual Staff Recognition Week is scheduled for April 26-30. This week is designed to recognize the dedication, loyalty, and achievements of the more than 8,000 administrative, service and support staff who make it possible for the University to fulfill its teaching, research and service missions.

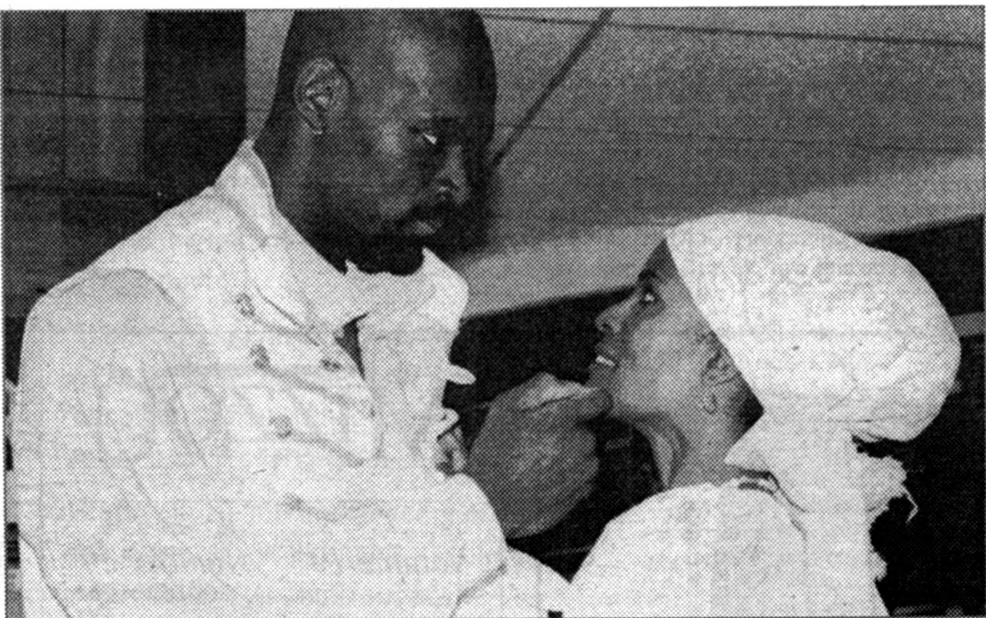
A calendar of events for the week is being mailed to all staff. I would encourage all supervisors to encourage staff to participate and to arrange schedules so that as many employees as possible can attend the events that have been planned.

I hope that you will attend the awards ceremony on Monday, April 26, at 1:30 p.m. in Jesse Auditorium as an expression of appreciation and support for MU staff.

At the ceremony, among other recognitions, four staff members will receive special honor by accepting Chancellor's Outstanding Staff Awards, having been chosen by their peers for outstanding service to MU. In addition, the Mick Deaver Memorial Award will be presented to a staff member who was nominated as best exemplifying the late police major's concerns for fostering good relations with students. The Barbara S. Uehling Award for administrative excellence will also be presented by the Staff Advisory Council. A reception in the rotunda of Jesse Hall will follow the ceremony.

Sincerely,
Richard L. Wallace

Richard L. Wallace
Chancellor



Adding a new twist to an old classic

Mizzou's Black Theater Workshop tackles Macbeth.

Shakespeare is considered to be the ultimate challenge for any actor, but according to Lesley-Ann Wells and Esau Pritchett, this year's Black Theater Workshop ensemble rose to and surpassed all tests associated with performing *Macbeth*.

Guest artists Wells of Port of Spain, Trinidad, and Pritchett of Detroit join the cast of 35 MU students in the production — which runs through April 25 at Rhynsburger Theater — directed by Clyde Ruffin, professor of theater and director of the workshop.

Ruffin has added a new twist to this full-scale production of *Macbeth*. His adaptation is set in the Caribbean in the early part of the 19th century and showcases a diversity of cultural, spiritual and religious traditions as *Macbeth* wrestles with good and evil, right and wrong.

"Our students were thirsty for an opportunity to tackle classical literature," Ruffin says. "The enthusiasm and energy around this whole project has really been wonderful."

Although the story is set in the

Esau Pritchett and Lesley-Ann Wells have lead roles in *Macbeth*, currently being performed through April 25 by the Black Theater Workshop.

Nancy O'Connor photo

Caribbean, Wells says it is true anywhere in the world. "Anyone who wants to meddle in the spiritual world for their earthly gains and for the demise of others, will have to pay a hefty price."

The production is a remake of Voodoo *Macbeth*, first performed in 1936 in Harlem under the auspices of the Federal Theater Project. It was the first all-black professional production of a Shakespearian play.

"This was the first time in the history of the American theater that, on a grand scale, blacks were hired to work in the theater and were given training," Ruffin says. "In fact, it was the first acknowledgment that black people could benefit from training in the arts as opposed to the prevailing belief that we were just natural entertainers."

Pritchett, who is cast as *Macbeth*, says the biggest challenge for a classical piece like this is the language. "If you don't understand it, you can't portray it to the audience," he says. "I believe everyone in the cast has a good grasp on exactly what they mean when they say their lines."

In December Pritchett earned a bachelor's degree in performing arts theater at Oakland University in Rochester, Minn. His initial intention was

to become a physical therapist; however, auditioning for a play, basically on a whim, changed his mind.

"I got cast, and the rest is history. I enjoyed it so much I changed my major," Pritchett says. His decision paid off in 1997 when he auditioned for and received the National Irene Ryan Acting Award. About the same time, he was cast as Othello in a regional American College Theater festival in Minneapolis at which Ruffin was one of the critics.

"I was impressed with how eager he was to learn and with his genuine commitment to the craft of acting," Ruffin says. "When I finally made a commitment to do this play, I thought it would be great to get him to come work with us and for us to work with him."

Last summer Ruffin had the opportunity to stage his adaptation of *Macbeth* in St. Lucia, where he met Wells (Lady *Macbeth*). In addition to acting professionally in Trinidad, Wells, who has earned a postgraduate degree in directing in London, manages a singing group, has her own music-based radio program and performs with the Trinidad Theater Workshop.

About the Black Theater Workshop ensemble, Wells says she senses a "great deal of enthusiasm among the actors for this project, because they are embracing something they ordinarily would not do. It has been fun getting to know everybody and working as a unit. We realize this is a very fortunate experience for all of us, and we are enjoying it."

TIGERS FOR TIGERS

John Seidensticker, one of the world's foremost tiger experts, will present the 1999 Dunmire Lecture, titled "Saving the Tiger." His talk will be at 7 p.m., Wednesday, April 28 in the Natural Resource Building's Conservation Auditorium. Seidensticker is curator of mammals at the Smithsonian Institution's National Zoological Park in Washington, D.C.

His visit supports the efforts of a new tiger conservation program at MU called Mizzou Tigers for Tigers. It's an innovative program designed to raise awareness and support for the critically endangered wild tigers, the animal species represented by

MU's mascot.

Seidensticker pioneered the use of radiotelemetry in his study of mountain lion social organization in Idaho. As a wildlife ecologist he has traveled widely in Asia, and his research focuses on the consequences of habitat insularization and change on mammal populations.

More information about the Mizzou Tigers for Tigers program, along with links to international tiger conservation efforts, can be found on the web at: www.missouri.edu/tigers

**ALUMNI ASSOCIATION
HONORS MU'S BEST**

The MU Alumni Association will honor faculty and alumni for their service to Mizzou at the annual banquet to be held Oct. 29 at the Reynolds Alumni and Visitors Center. For reservation information, call 882-6613.

The Distinguished Service Award will be presented to Thomas E. Atkins III, president of Columbia Photo and partner in Cable Co. Inc. Kit Salter, professor and chair of geography, will receive the Distinguished Faculty Award.

Recipients of the Faculty Awards for 1999 are: Rex Campbell, John David, George

Kennedy, Martha Townsend, Judy Wall and Warren Zahler. Alumni Award recipients are: James Amos Jr., Glen Barton, Robert Dickeson, Lester Einbender, James Fergason, Everett Forkner, James Goodrich, William Jenkins, Lenard Politte, Jon Sundvold and Debrah Turner.

Cultivating key alliances

Vet College enters second phase of \$10 million campaign.

MU's College of Veterinary Medicine began in 1887 as a small University department in a wooden barn. Now, thanks to the support of Missouri lawmakers, MU administrators, and corporate and private donors it is poised to become an international leader.

In conjunction with the college's 50th anniversary, and during its annual Gentle Doctor Benefit, the college began the public phase of a \$10 million endowment campaign with more than \$6 million already committed.

"The endowment campaign has provided me with an opportunity to meet with a number of alumni, friends and key corporate allies, and personally experience the commitment that each has to the College of Veterinary Medicine," Dean Joe Kornegay said.

"I look forward to continuing to interact with these special friends and others as the campaign moves forward into the public phase. Because of their efforts and those of our students, staff and

faculty, the college has a bright future."

The college is announcing four major new gifts and pledges included in the current \$6 million campaign total.

"The College of Veterinary Medicine's 50th Anniversary Endowment Campaign is a celebration of the past and a blueprint for the future ensuring MU's position as a leader among the best veterinary colleges in the nation," MU Chancellor Richard Wallace said.

Founded in 1946, the college graduated its first class of doctors of veterinary medicine in 1950. The campaign timeline parallels the four-year journey of this first class. All gifts and pledges received since July 1, 1996, are included in this campaign. Since that time, three new professorships have been endowed—the Ralston Purina Missouri Professor of Small Animal Nutrition, and the Tom and Betty Scott Missouri Professor of Veterinary Oncology in 1996; and the E. Paige Laurie Missouri Professor of Equine Lameness in 1997.

"Underlying the campaign's financial objectives are two long-term advantages: the development of an enthusiastic new volunteer leadership base and greater visibility for the college with friends and supporters all over the country," said David Horner, director of development for the college.

This campaign is the second major fund-raising effort for the college. A five-year capital campaign in 1988-1992 raised \$4 million in private support from alumni, corporations and friends. This fund seeded the design and construction of Clydesdale Hall, the college's state-of-the-art, \$21-million, 144,000-square-foot teaching hospital. Since opening its doors in 1993, Clydesdale Hall has become recognized as one of the nation's finest, and best-equipped, veterinary medical teaching hospitals.

Here are highlights of some recent major gifts to the College of Veterinary Medicine:

•The Joseph E. Wagner Fellowship in Laboratory Animal Medicine was established by a \$750,000 gift from the Research Animal Diagnostic & Investigative Laboratory (RADIL) in the college. The endowment will support

post-doctoral fellows, graduate students or residents in the Laboratory Animal Medicine Training Program. It is named for Joe Wagner, a Curator's professor of veterinary pathobiology and the first director of RADIL.


•The Thelma P. Zalk Scholarship was endowed by a \$300,000 gift from Zalk to provide scholarships to students with financial need. A friend and former hospital client of the college, Zalk was so impressed by the skill, care and attention paid to her black Labrador retriever, she has tried to find ways to support the college financially since then.

•The Theodore G. Short Scholarship provides financial assistance to needy students of high scholastic standing desiring to attend the college. It was endowed by a \$255,000 gift from the trust of Theodore G. Short, a former MU student and Galena, Mo., resident who died in 1996.

•The Gentle Doctor Benefit Parents Committee Scholarship is a newly created endowment to provide scholarships for veterinary medical students with proceeds from the Gentle Doctor Benefit.

Great Reading

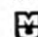
STARTS AT UNIVERSITY BOOKSTORE

Your  owned and operated bookstore.

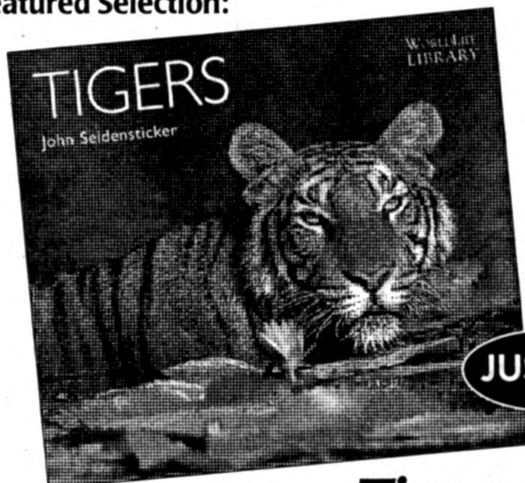
John Seidensticker, Curator of Mammals at the National Zoological Park of the Smithsonian Institution in Washington, DC, details feeding habits, prey species, territorial marking and defense, roaring, mating, birth, and social structure. He also relates extensive personal experiences in the tracking and study of tigers in Nepal's Chitwan National Park, including one technique that involves approaching tigers on a specially trained elephant.

University Bookstore

Main Level Brady Commons
882-7611 TDD: 882-3985
www.bookstores.missouri.edu
Open: Mon-Thurs: 8-7
Fri: 8-5, Sat: 10-5

 A University owned and operated bookstore.

MU Faculty, Staff and Retirees save 10% on almost everything we sell. Ask for your Faculty/Staff discount.

Featured Selection:

Tigers

By John Seidensticker

Now available in our General Books Department.

Meet John Seidensticker

presenting the Dunmire Lecture
Saving the Tiger

Wednesday, April 28th 7:00 p.m.
Conservation Auditorium
Anheuser-Busch Natural Resource Bldg.



Book sale and signing available after the program.

MIZZOU

WEEKLY

Volume 19 Number 29

A publication for University of Missouri-Columbia faculty and staff, published every Thursday during the academic year and twice a month during the summer by Publications and Alumni Communication, a department of University Affairs, 407 Reynolds Alumni and Visitor Center, 882-7357. News deadline is noon Thursday the week before publication. Annual subscriptions are available for \$25.

Editor John Beahler
Graphic editor Sue Richardson
Director of advertising Tanya Stitt
Photographers Rob Hill, Nancy O'Connor
Assistants Yoon Cho, Emily Smith



Printed with soy ink on recycled newsprint containing 90 percent to 100 percent post-consumer waste.

Staff Recognition Week

April 26-30, 1999

Marching into the Next Millennium

Everyone is encouraged to take part in the full week of free activities.

Monday, April 26

Staff Recognition Ceremonies

1:30 to 3:30 p.m.

Jesse Hall Auditorium

- * Four staff members, chosen by their peers, will receive Staff Recognition Awards of \$1,000 each.
- * The Mick Deaver Memorial Award and the Barbara Uehling Award for Administrative Excellence also will be presented. Both carry a \$500 cash prize.
- * Staff with 20 and above years of service to the University will receive certificates of appreciation.
- * Staff with 5, 10 or 15 years of service will be recognized.
- * Refreshments will be served in the rotunda of Jesse Hall after the ceremony.

PARKING AVAILABLE IN TURNER AVENUE GARAGE
AND IN CONLEY AVENUE GARAGE

Tuesday, April 27

Self-Defense Seminar

Noon-1 p.m.

E125 Adam Conference Center
Veterinary Medicine Building

Lori Perry will present a program on personal safety that covers where to park your car; how to choose a safe route; how to present yourself to deter attacks; and what to do if an attack occurs, including how to use the emergency phones (e-phones) on campus.

Health Fair

11 a.m.-3 p.m.

Multipurpose Room #24, Brady Commons

Before beginning your march into the next millennium, take advantage of the Staff Recognition Week Health Screening. This year's screening will include blood pressure/pulse, body fat composition, diabetes screening, nutrition analysis, stress management, and information on parenting, alcohol, drugs, and other wellness issues. In addition, total cholesterol screening for \$10 and cholesterol with HDL for \$15 will be offered from 11 a.m.-1 p.m. Call 882-6565 for appointment.

Wednesday, April 28

Fashion Show & Booth

Noon-1 p.m.

Hearnes Center (South end)

Hosted by Teresa Snow of Channel 17, KMIZ-TV, and Rick Wise of Printing Services, this year's fashion show—held in conjunction with Expo '99—will highlight a variety of attractive, yet affordable fashions selected from local businesses and modeled by your co-workers. Door prizes will be awarded throughout the show. The regular shuttle service to and from the Hearnes Center will be available, and lunch may be purchased from participating vendors at Expo '99. Parking available in lot SG4.

Stop by the Staff Advisory Council's booth at Expo '99 to learn more about the organization, its mission, and issues being addressed for MU staff.

Expo '99

9 a.m.-4 p.m.

Hearnes Center (South End, East Entrance)

Learn all about using MU's services at this year's exposition. Sponsored by Administrative Services, Expo '99 features more than 75 booths with free treats, giveaways and door prizes. Lunch may be purchased from various food vendors participating in the event. For your convenience, the regular shuttle service to and from Hearnes will be available. Parking will also be available in lot SG4.

Thursday, April 29

Variety Show

Noon-1 p.m.

Mark Twain Ballroom, Memorial Union

Musicians and entertainers of all types will get your toes tapping and your hands clapping as they perform at this year's Staff Recognition Week Variety Show. Back by popular demand, the variety show celebrates talented staff campuswide.

Horticulture Club Plant Sale

8 a.m.-5 p.m.

Room 52 Agriculture Building

Spring is here! That means yard work and gardens, now and in the next millennium. Again, the MU Horticulture Club is holding its April bedding plant sale in conjunction with Staff Recognition Week. Bedding plants (herbs and vegetables) will be reasonably priced at this two-day sale, which continues through 5 p.m. Friday April 30.

Friday April 30

Horticulture Club Plant Sale

8 a.m.-5 p.m.

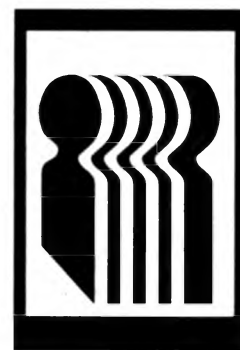
Room 52 Agriculture Building

Y2K Computer Seminar

Noon-1 p.m.

205 Locust Street Building

What's the big deal about the year 2000? MU staff are invited to hear John Beaumonte, Y2K project coordinator for Information and Access Technology Services, talk about preparing your computers—both at work and at home—for the next millennium.



**Staff
Advisory
Council**
WORKING FOR YOU



MARY ANN AUSTIN

Director of Compliance

Intercollegiate Athletics

Mick Deaver Memorial Award Recipient

With thousands of NCAA, Big 12, federal and institutional rules to keep track of pertaining to the eligibility, certification and financial aid for approximately 450 student-athletes, Mary Ann Austin has her hands full day in and day out. The rules are complicated and generate differing interpretations. She

not only has to be well-versed in these rules, but must monitor updates and changes, and request interpretations so the laws will be properly applied by coaches, administrators, student-athletes, parents and boosters.

Other job duties include monitoring all promotional activities such as requests for autographs or personal appearances, and serving as the staff liaison to the Professional Sports Counseling Panel.

This group consists of campus faculty and staff, and advises professionally bound student-athletes in areas such as how to choose agents, review contracts and ways to avoid jeopardizing their eligibility.

Additionally, the compliance office is the primary link between the athletic department and campus, including residential life, cashiers, financial aid, admissions, registration and advisers.

"The most challenging part of my job is processing the multiple waivers required to enhance the student-athletes' welfare on our campus," Austin says. "Many of the rules are contradictory in nature and have the unintended result of penalizing student-athletes."

She recalls the summer of 1996 when many of the NCAA rules governing initial eligibility for intercollegiate athletics changed and became more stringent. Due to those changes, six appeals were filed on behalf of student-athletes who had signed national letters of intent with MU but were denied admission based on their status as "non-qualifiers" with the NCAA.

Most of the burden of filing these

appeals fell upon Austin's shoulders. Not only was she responsible for gathering information and paperwork in an effort to show these student-athletes had been wrongly categorized as non-qualifiers, but she was in daily contact with them and their families who were anxiously awaiting news of their appeals. Largely due to Austin's diligence, five of the six became full qualifiers and the sixth a partial qualifier.

"Since the implementation of these rules, Mary's conscientious attention to detail has prevented the need for many additional appeals," says Austin's supervisor Sarah Reesman, associate director of athletics. "By closely monitoring the academic progress of our incoming student-athletes, and communicating with parents, counselors and coaches, Mary has avoided potential eligibility problems."

Austin is respected among her peers, Reesman says, and her advice is frequently sought after by her counterparts at other conference institutions and by the Big 12 Conference office itself. "Mary possesses the capacity to anticipate the effects of rule changes. This ability has enabled MU's athletic department to lead the Big 12 in implementing innovative policies and procedures necessary to maintain compliance and better serve the student-athlete."

Though the job may be tedious and challenging, Austin can always count on one rewarding aspect vitally important to her and the student-athlete: graduation.

Mick Deaver Memorial Award

The award, established in 1980 by the Staff Advisory Council, recognizes a staff member who exemplifies the late University Police major's concern for fostering good relations with students. The award carries a \$500 prize. Deaver, who graduated from MU in 1966, was associate director of University Police at the time he was killed in an automobile accident in 1980.

Finalists

Jennifer Arnold

Laura Hacquard

Mary Porter

Nancy Taube

"The best part of my job," she says, "is to watch student-athletes make it through their years of eligibility and successfully complete their athletic careers as well as their academic careers."

Service Award Recipients

5 YEARS

Richard Ackerman, MIMH-Mental Health Systems
Carolyn Adams, Surgery Clinic
Sheila Akers, Economics
Susan Akers, Building Services
Adria Allen, Procurement/Materials Management
Mary Alvis, Ellis Fischel Medicine-I/P
Dan Ampong, Social Work
Karen Apple, ITS-Planning/Coordination
Lori Argo, 4 West Medicine
David Armin, Marceline Clinic
Michelle Arn, GM Family Medicine Clinic
Mirvat Asmar, University Physicians Compliance
Kevin Austin, Biological/Agriculture Engineering
Phillip Baker, Warehouse Operations
Barbara Baldwin, Campus Dining Services
David Bank, Anesthesiology & Perioperative
Robert Barham, Agronomy
Rachel Barnes, Ellis Fischel Surgical Service
James Barnes, MU Libraries
Diana Barron, Campus Dining Services
Diane Bartley, Accounting Services
Leona Batye, Pathology
Kathryn Baylor, Family & Community Medicine
Brenda Beach, Patient Accounting-University Physicians
Patrick Beckmann, Intercollegiate Athletics
Lynn Beckwith, Police
Joan Belk, MRC Assisted Support Services
Cindy Bennett, MRC Nursing Services
Michele Bergfeld, Child Health-Neonatology
Patricia Berndt, Development-Hospitals & Clinics
Bonnie Black, Linen Services
Jason Blaisdell, Sponsored Program Administration
Jan Blakemore, Endoscopy Center
Sarah Blanton, ITS-Development/Research
Daniel Bogan, Dalton Cardiovascular Research Center
Janet Bogan, Veterinary Medicine & Surgery
Becky Bohnen, Human Resources-Hospitals & Clinics
Lorie Bousquet, Obstetrics & Gynecology
Tamara Bowne, Pediatrics ICU

Cynthia Boyd, Animal Science
Jan Branch, MRC Housekeeping/Laundry
Carolyn Breedlove, Medical Records
Melinda Bridges, Agronomy
Nicole Brown, MU Libraries
Shelley Brown, Residential Life
Jody Browning, Patient Accounting-University Physicians
Diane Bruemmer, Helicopter Service
Roberta Burlage, ENT Clinic
Dexter Burns, Respiratory Care Services
Kyna Byerly, Medical Genetics
Anita Campbell, MRC Nursing Services
Charles Carlson, Planning, Design & Construction
Sondra Carter, Child Health-Gastroenterology
Anita Carter, School of Natural Resources
Vonnie Carter, MRC Nursing Services
Andrea Cathey, Student Financial Aid
Joyce Childers, MRC Nursing Services
Deborah Clark, Dean of Education-Dean
Lisa Clark, Ellis Fischel Surgical Service
Harold Cline, Ellis Fischel Patient Accounts / PBX
Patricia Coble, TV Station
James Cogswell, American Archeology
Richard Cole, Residential Life
Donna Coleman, Dean of Education Undergraduate Studies
J. Todd Coleman, Alumni Activities
Stephanie Coleman, Ellis Fischel Food Services
Jeffrey Collins, Vascular Lab
Kathy Cook, Ellis Fischel Intensive Care Unit
Lisa Corlee, MU Libraries
William Cosgrove, Printing Services
Carolyn Coulthard, Radiology
Linda Craig, Dean's office-B&PA
Jenny Cross, Nursing Nursery I
Jerry Cummings, Intercollegiate Athletics
Melanie Current, Dean of Education-ARC
Sandra Current, Director of Campus Facilities
Susan Curry, Nursing NICU
Della Damon, Psychology
Charles Davidson, Residential Life

Ken Davis, Energy Management
Doris Davis, School of Nursing
Catherine Deshazo, Fertilizer Control
Glenda Deshon, Rural Sociology
James Disher, Delta Center
Ronald Dobey, Research Reactor
Carl Dockery, Campus Dining Services
Susan Donnelly, Planning, Design & Construction
Michaelle Dorsey, MU Libraries
Darla J Dorward, Psychiatry Clinic
Jeri Doty, Business Development-University Physicians
Debra Dow, ITS-UP Business Applications
Christie Dunn, Radiology
James Dunn, Campus Dining Services
Jane Dunn, Adolescent Unit
John Dye, Police
Victoria Ebert, 4 West Medicine
Ruby Eddington, MRC Nursing Services
Patricia Edelen, Purchasing-University Hospitals & Clinics
Shelda Eggers, Women Studies
Bernard Eichelberger, Planning, Design & Construction
Monica Elliott, Endoscopy Center
Deane Evans, Ellis Fischel Radiology / Nuclear Medicine
Kelley Faup, Education & Counsel Psychology
Barbara Fenske, Planning, Design & Construction
Jacqueline Fernald-Leal, Student Health Center
Ana-Maria Fernandez, Veterinary Pathobiology
John Fewell, Telecommunications
Tammie Fishburn, Planning, Design & Construction
Theresa Foltz, Curriculum & Instruction
Oleta Forsee, Medicine-Endocrinology
Deon Frank, Biological/Agriculture Engineering
Harry Frank, Energy Management
Nancy Franklin, External Affairs-AHEC
Kerry Franklin, Building Services
Timothy Freese, ITS-Technical Services
Jeanne Fry, Campus Dining Services
Tod Fudge, Energy Management
Marta Fuemmeler, Ellis Fischel Patient Accounts / PBX
Gail Garcia, Business Development-University Physicians

Barbara S. Uehling Award for Administrative Excellence

Created by the Staff Advisory Council in 1986, the award honors the former chancellor's efforts on behalf of staff members. It acknowledges administrators who have demonstrated qualities of leadership and administrative excellence, and who have contributed to improved working conditions and the quality of life for Mizzou's staff members. The award carries a \$500 prize.

Finalists

Gene McArtor

Wayne Merritt

Daniel Shipp

Campus Facilities' energy management department is a nationally recognized organization and, according to many employees, a good place on campus to work thanks, in

part, to Paul Hoemann's leadership.

As director, Hoemann is responsible for 129 full-time employees in the power plant; electric distribution; steam and water distribution; chilled water; energy conservation; testing, adjusting and balancing; energy management control systems; and insulation services.

All of these units work together, under Hoemann's supervision, to enhance the overall quality of life for students, faculty and staff by providing reliable and cost-effective utilities in the work and living environments.

Simply put, "Paul makes sure the electricity stays on, the steam lines stay in operation to heat and cool the buildings, and the water keeps flowing," says Curtis Flatt, one of Hoemann's supervisees.

Hoemann has been director of Energy Management for more than 10 years. During this time his innovative and efficient practices have garnered the department numerous awards including: Governor's Award for Pollution Prevention (1998 Overall Management of Energy), Governor's Award for Quality and Productivity and The Council of State Governments' Innovations Award (1998 Tire Derived Fuel Program), EPA's Energy Star Buildings Partner of the Year (1997 Energy Conservation), National Association of College and University Business Officers Award (1996 Innovative Electric Procurement), and EPA's Green Lights University Partner of the Year (1995 Energy Conservation).

Co-workers say these awards

demonstrate Hoemann's ability to hire and retain a knowledgeable and productive work force and his ability to motivate employees to perform to their highest ability. Also it demonstrates the flexibility he gives employees to solve problems and try new technologies to improve the quality and reduce the cost of services the department provides to MU.

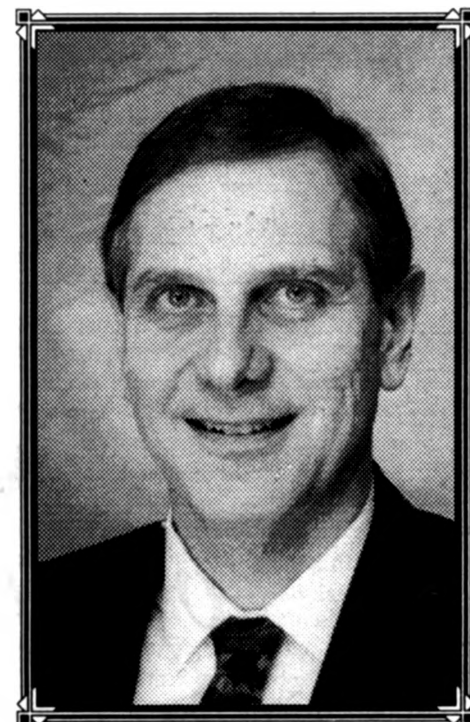
Hoemann's no slouch when it comes to improving the working conditions for his staff.

"Paul supports his employees by providing them the training and resources to perform their daily duties," says Paul Coleman, manager of engineering. "His practice of open communication at all levels keeps his employees informed of what's going on and makes them feel good about themselves and their jobs."

Barry Trader, systems support specialist, says Hoemann has earned the respect of his employees and gives them respect in return. "He listens to employees' concerns and is very supportive of their ideas," Trader says.

"He is the first person to congratulate you on a job well done and to give you feedback on your performance. Without his leadership and the qualities he possesses as an administrator, energy management would not be the organization it is today, nor would we have received the national recognition, awards or respect of our peers."

In summary, Judith Stock, office management associate, says, "I am old enough to have worked for some good



PAUL HOEMANN

Director, Energy Management

Campus Facilities

Barbara S. Uehling Award for Administrative Excellence
Recipient

bosses, as well as some very poor ones, and I am proud to work for Paul. He is the best."

Laurie Garrett, Physical Medicine & Rehabilitation
Jerry Garrett, Multipurpose Auditorium
Lulseged Gebrehiwot, Agronomy
Peggy Allen Gentry, Pathology & Anatomical Science
William George, MRC Physicians
Sandi Gerhart, Multipurpose Auditorium
Wanda Gerling, Printing Services
Jodie Giboney, Ellis Fischel Engineering
James Glenn, Building Services
Artice Goldman, Campus Dining Services
Brandi Gowin, Director of Campus Facilities
Patrick Grammer, Supply Distribution-Hospitals & Clinics
Amy Graves, Patient Accounting-University Physicians
Cheryl Green, Vice Provost Extension
Kelly Gregory, MIMH-Continuing Education
Karen Gustavson, Program for Excellence in Teaching
Noreen Haas, Sameday Surgery Center
Neal Halstead, Radiology
Dennis Handley, Boonville Clinic
Bradley Hardin, Vice Provost Extension
Gere Harmon, ITS-UP Business Applications
Esther Harper, Lake Neurology Clinic
Paula Harrison, Surgical Services
Sandra Harryman, Medical ICU-University Hospital
Patrick Harvey, Building Services
Mary Hastings, American Archeology
Susan Hatfield, School of Nursing
Tonette Hayes, Residential Life
Helen Hayes-Hardin, Medical Records
Guy Hayter, Ambulatory Care-University Physicians
Leilani Haywood, Academic/Admin. Computing Support
James Heckemeyer, Planning, Design & Construction
Karen Hendrix, Health Sciences Center/Marketing
Charles Henley, Building Maintenance
Mark Henrichs, Budget & Reimbursement-Hospitals & Clinics
Sandra Henthorn, Ellis Fischel Therapies
Sally Hibbs, Student Health Center
Melanie Himmelberg, Career Planning Placement Center
Sarah Hinkle, MRC Housekeeping/Laundry
Michael Hoaglin, Planning, Design & Construction
Theodore Hoell, Building Services
Cliff Holdren, MRC Administration
Melissa Hollis, Veterinary Biomedical Sciences
Brandon Hough, LAN Administration Desktop Support

Barbara Howard, Planning, Design & Construction
David Hubbard, Environmental Health & Safety
Steven Huddleston, MRC Vocational Rehabilitation
Suzanne Hullender, Ellis Fischel Administrative Services
Gary Hume, Medical Research Office
Richard Hunt, MRC Pathology
Jason Huntsperger, Laboratory Animal Medicine
Virginia Ivey, Pathology
Jenna Jackson, Physics
Drew James, Emergency Suite
Lynn Jaxon, Patient Accounting-University Physicians
Dona Jett, Callaway Physicians
Scott Jewell, MU Libraries
Shawnda Johns, MRC Occupational Therapy
Earl Jones, Dean of Engineering
Jane Josten, MRC Nursing Services
Kevin Kaufman, Energy Management
Rebecca Keen, Patient Accounts-University Hospitals & Clinics
Myra Kelly, MU Libraries
Mark Kempf, Radiology
Rhonda Kempf, Vascular Lab
Janean Kent, Dean of Graduate School
Evelyn Kerr, Medical ICU-University Hospital
Mary Ellen Kerr, Pediatrics
Marydell Khan, Student Health Center
Eric Kind, Campus Dining Services
Lacy King, Ophthalmology
Kimberly Kinkead-Amiot, Anesthesiology
Joyce Klein, Dean-Medicine, Budget & Analysis
Terry Klick, Callaway Physicians
Deborah Kluthe, MRC Physicians
Christopher Knieja, Radiology
Darla Knife, Veterinary Medicine & Surgery
Robert Koch, Boonville Clinic
Marie Korte, Dean of Education IML-R&D
Brent Krugh, Biochemistry (Agriculture)
John Kumia, Cooperative Extension
James Lamb, Ellis Fischel Housekeeping / Linen
Judy Lammers, Boonville Clinic
Drayse Lanpher, Physical Medicine & Rehabilitation
Carmen Lara, Pre-Operative/ENT-University Physicians
Alan Larrivee, Printing Services
Peggy Laughlin, Callaway Physicians
Julia Leblanc, MRC Occupational Therapy

Charles Lee, Surgical Services
Jodette Lenser, Communication
Lida Lenz, Multipurpose Auditorium
Glenda Leu, Campus Dining Services
Billy Lewis, Residential Life
Miachel Lewis, Residential Life
Carlos Libreros-Minotta, Biochemistry (Medicine)
Emilie Lindner, MRC Pharmacy Services
Jonathan Lindquist, Research Support Units
Vicki Lindstrom, Theater
Kristi Livingston, Agricultural Economics
Eleanor Logue, Marceline Clinic
Marc Long, University Affairs
Prima Love, Vice Provost Minority Affairs/Faculty Development
Laura Ludewig, Social Services
Huan Luo, Food Science & Human Nutrition
Stephen Lyon, ITS-Technical Services
Michael Macklin, Radiology
Helen Mann, Supply Distribution-Hospitals & Clinics
John Marquez, Supply Distribution-Hospitals & Clinics
Ronald Marshall, Laboratory Animal Medicine
Glenda Masters, University Computing Services
Michelle Mathews, Human Development & Family Studies
Jonalee Maupin, Pediatrics ICU
Christine Mayer, School of Informational Science & Learning
Donald McCaleb, Building Services
Maurita McCarthy, Curriculum & Instruction
Pia McClain, GM Family Medicine Clinic
Jennifer McClellan, Nursing NICU
Paula McClure, Student Financial Aid
Janet McDowell, Special Education
Cheryl McGowan, Patient Centered Care
Anita McGrath, GM Family Medicine Clinic
Rachel McKee, Diabetes Clinic
Ramonna McKinzie, Patient Accounting-University Physicians
Elaine Meier, Callaway Physicians
Susan Melia-Hancock, Agronomy
Ann Merrifield, Vice Provost Extension
Wayne Merritt, Printing Services
Linda Metz, Publications & Alumni Communications
Donna Meyer, Plan Administration-University Physicians
Valerie Meyer, Perinatal Unit
Talley Miller, Medical Records
Kristina Miller, Dean's Office-B&PA



These 1999 winners of the \$1,000 Chancellor's Outstanding Staff Awards are recognized for being at the top of their profession.

Her co-workers at the Veterinary Diagnostic Lab say that Kathy Curtis handles so many varied duties — and handles them so well — that it would be difficult to pinpoint one area in which she outshines the others. In fact, Curtis is so willing to accept new challenges that her supervisors say they have to resist the temptation to turn all new problems over to her.

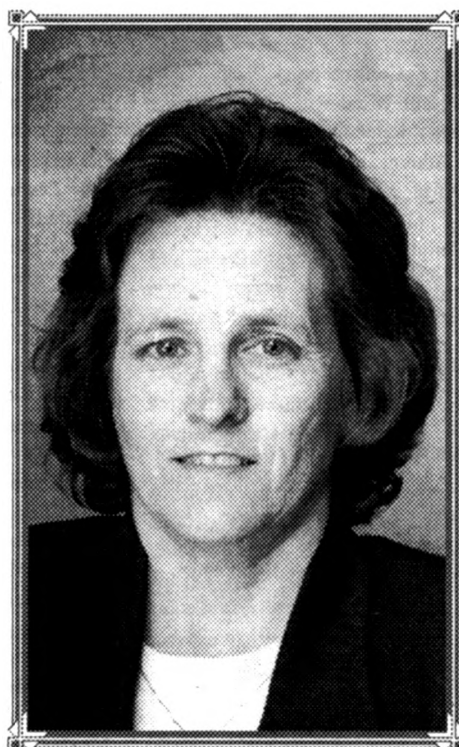
Steven Stockham, associate professor of veterinary pathobiology, says Curtis' efficient management has enabled a 50 percent increase in workload during the past four years, even after a 30 percent decrease in lab staff.

Over her 23 years at the veterinary college's clinical pathology lab, Curtis rose quickly from a bench technologist to laboratory supervisor and teaching technologist for pathology classes. In her current role she oversees the daily lab operations, helps faculty schedule research work there, maintains inventory and equipment, and troubleshoots any problems.

That troubleshooting, although challenging, can offer a lot of satisfaction, especially when Curtis gets the results she's looking for. Over the years, those duties have included putting in new equipment in the lab and helping incorporate a computer-based management system.

One of the most rewarding aspects of her job, Curtis says, is helping to train veterinary students in laboratory procedures when they do their clinical pathology rotation. "I feel like I'm helping them learn something they can take with them and use for the rest of their lives," she says.

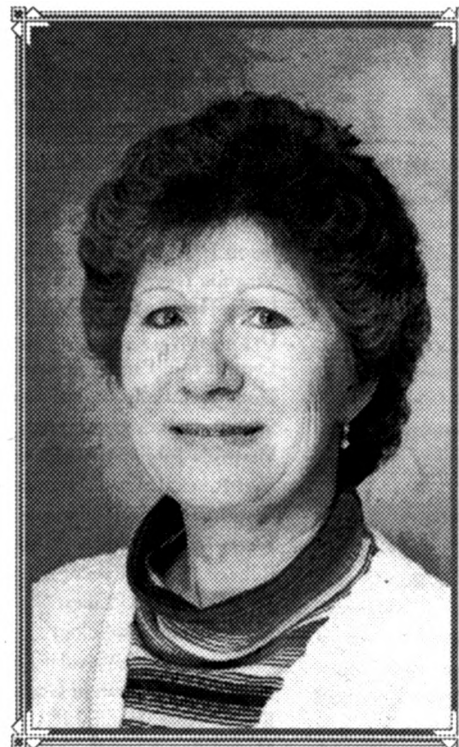
Over the years, her students have responded by consistently giving her some



KATHY CURTIS
Laboratory Supervisor
Veterinary Medicine Diagnostic Laboratory
Administrative-Professional recipient

of the highest ratings in the veterinary curriculum. Her co-workers in the lab give her high marks as well. Curtis says it is those workers, both technicians and clerical staff, who make the lab such a success.

"I stand behind them and support them with what they need to get the work done," she says. "If it weren't for the good people I work with, I wouldn't be here. They make my job easy; they make it enjoyable."



WANDA KENT
Senior Secretary
Religious Studies
Secretary/Clerical recipient

As the only support staff member in the Department of Religious Studies, Wanda Kent performs a myriad of duties from coffee making to record keeping for 11 full-time and adjunct faculty members and three graduate teaching assistants, as well as supervising a work-study student and keeping track of 28 religious studies majors.

Co-workers say Kent is a person of the highest work ethics, striving to the

utmost of her ability to perform the responsibilities with which she has been entrusted by faculty and students in her department. "Although one would think the volume of material which crosses her desk would be overwhelming at times, Wanda never gives a hint of giving up, and cheerfully undertakes any new project to benefit the department," says nominator Jennifer Arnold. "Her judgment is impeccable, as is evidenced by the trust and confidence placed in her by her department faculty and chair."

Kent says she enjoys the flexibility of the job. "My tasks vary from day to day. One of the things I truly enjoy about my job is that there is no time for boredom."

At peak times of the year, some duties have to be put on hold in order to meet pressing deadlines. Still, the flexibility of the faculty makes those times bearable, Kent says. "I couldn't say enough good things about this department. The people are warm, considerate and understanding. I work for a really great department."

Regarding Kent's relationship with associates, Arnold says, "Fellowship is probably Wanda's strongest suit. There is no other individual to whom one can turn in times of stress and know of a surety that he or she will find such a listening ear and strong shoulder."

"Wanda is always willing to take a few minutes, or more if needed, to listen to the concerns of faculty, staff or students. When you leave Wanda's office after sharing a problem, you know that it will be held in complete confidence."

The next time you loll in the cool shade of one of the thousands of trees on campus, or the next time you admire the brilliant colors that brighten Mizzou each fall, you can thank Steve Parker.

"There's not one spot on campus where you can stand and not see a tree that Steve Parker has planted," says Charles Paxton, a supervisor with Landscape Services. Since Parker started at the University more than 20 years ago, a number of those trees are now well on their way to becoming future giants.

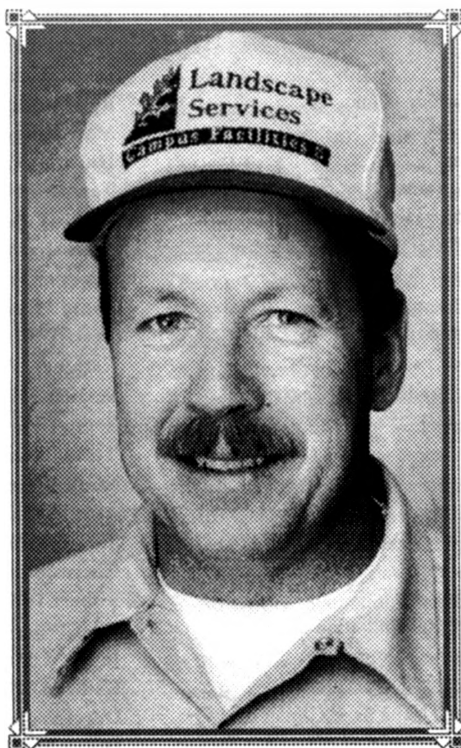
Parker is an arborist with Landscape Services. He maintains, plants, transplants and removes trees and shrubs. He prunes trees and installs landscapes. Oh yes, and when the winter winds howl, he's one of many Campus Facilities workers who pitch in to scrape away the snow and keep the University rolling.

Over the past year, Parker took on a monumental task — installing plants at the seven new MU buildings and additions that have opened recently. "A productive and conscientious arborist, he possesses a vast amount of horticultural knowledge and is extremely concerned with quality crew performance," says Scott Keith, landscape gardener.

Co-workers say he is a self-starter, who needs little supervision in his job. "Once he receives instructions, the job is as good as done," says one colleague. "Steve Parker is an employee on whom one can depend to get the job done, and to get it done right."

Parker has a penchant for finding a way to make a situation work, no matter how new, different or difficult it might be. When problems do arise, he gets them resolved quickly, using good judgement, social skills and job skills.

Although Parker's job is physically



STEVE PARKER
Arborist
Landscape Services
Crafts-Maintenance Recipient

demanding and requires him to work in all weather conditions, co-workers say he maintains an easygoing manner. That attitude, and his years of experience, make him a perfect trainer for the new, inexperienced employees who are hired each year. Parker is making his mark on MU in another way: he's bringing up a new generation of well-trained groundskeepers.



SUE SCHUERMAN
Library Assistant II
Journalism Library
Technical-Paraprofessional Recipient

Not long after Sue Schuermann started working at the Journalism Library in 1990, faculty and students quickly learned that she could be their best friend.

"She is incredibly knowledgeable; she knows the library and how and where to find any information," says one journalism faculty member. "She seems always to have time to help you — and does. She not only helps, but she does it with a warm and wonderful smile — always."

Co-workers say Schuermann goes the extra mile to help library patrons, and is always willing to pitch in to get the job done. At the same time, she's constantly searching for innovative ways to improve the library.

For instance, Schuermann developed the Journalism Library web page and masterminded a major reorganization of the cramped staff work area. She created a training program for the 10 to 15 student workers who staff the library each semester, and also compiled a notebook of frequently asked reference questions to help new workers.

Schuermann has even taken the initiative to create library displays on everything from MU's noted journalism graduates to new electronic resources at the library. And when there are problems with the library's computers, she's the troubleshooter. One of her areas of special expertise is in electronic technology and database searches.

Schuermann says it's something that has always come easy to her. Try telling that to a fledgling reporter who's desperately trying to dig through a database and still meet a deadline. Schuermann calmly helps those frustrated students pry out the information they need, then she teaches them how to use these specialized databases.

Working with students is one of the most rewarding aspects of her job, she says. Unlike the main Ellis Library, the Journalism Library is small enough that she "gets to know students by name," Schuermann says. "I develop pretty close relationships with some students. I like that."

Students return the compliment. A few years back, when journalism students were asked what they wanted in a new library, one student said "get more great people like Sue Schuermann."

Staff Recognition Award Finalists

Administrative/Professional

Debbie Alviso
Tim Haithcoat
Anne Martin
Pat Wehmeyer

Crafts/Maintenance

James Brown
Bill Rybok
Letta Schnell

Secretarial/Clerical

Diane Burnett
Carla Klein
Debby Thomas

Technical/Paraprofessional

Armine Alcato
Lisa Noordsy
Tobian Rojas

1998 Staff Development Award Winners

MICHAEL AHOLT
BRUCE ALSPAUGH
CATHY ASBURY
MELINDA S. BOBBITT
ANGELA BRUNO
JEAN MARY CAMDEN
GRACE R. CARLSON
JENNIFER K. CARTER
NANCY ANN CASSITY
VICKIE K. CAWLEY
DEBBIE CLARK
THOMAS S. CLATTERBUCK
SUSAN COLBURN
CONNIE L. DUNN
JANE T. COOK
LISA DAVIS
PATRICIA DELONG
KATHLEEN E. DOISY
BOBBI ECHTERNACHT
KATHLEEN EDWARDS
CHANG FENG
ANA-MARIA FERNANDEZ
JOLEEN FINDERS
SUSAN R. GROSHONG

DONNA HANLY
SUSAN E. HATFIELD
DOROTHY KATHLEEN HILL
MARY HOARD
KATHRYN MASON HUSTED
TERRY JACKSON
JANE C. JOHNSON
WILL KIEHL
MELBA KELLY-GORDON
SUSAN M. LANGHORST
LARRY LEATON
BRENDA LEWIS
TYEECE LITTLE
LAWRENCE LOGAN
ED MCKANE
CARRIE L. MCMAHON
JACKIE MANKEY
MEGAN MARTIN
MICHELLE MATHEWS
ROBYN WATSON MCKOWN
GERALD J. MORGAN
JENNIFER ANN MORTON
NANCY E. OLSON
KIMBERLY A. PAUL
MARLYS R. PECK

JAKE PREWITT
JAMES PUTNAM
TAK CHEE PUANG
KENNETH E. REDDING
SHERRI REDMON
LEWIS L. RUGEN
LOUIS M. ROSS, JR.
JEFF SCHNEIDER
VICTORIA SHAHAN
MARCIA SHARP
ROSEMARY SHOCK
DEANN SORRELL
MARGARET SPIERS
CLIFF STOLLER
TAMMY STRAWN
GREG STURGEON
JUDITH ANN TAYLOE
MELINDA K. VAN EATON
JENNIFER KAY WAGNER
PATRICIA WILLIS
JAN E. WILSON
PATTI WISE
NANCY ZGUTA
JOYCE ZULOVICH

Frankie Minor, Residential Life
Shellie Moentmann, Surgical Services
Monica Montalvo, Pathology
Duane Moore, Residential Life
Dale Muckerman, Building Services
Deborah Musbach, Surgical Services
Richard Myers, Animal Science
Jerelyn Nelson, Safety-University Hospital
Caverly Neuschafer, Cashier/Payroll/Student Loans
Helen Newcomer, MRC Vocational Rehabilitation
Constance Niederhelman, Coronary Care Unit
Eric Niewoehner, Dean-Medicine-Budget & Analysis
Rita Nole, Energy Management
Karen Nolting, Printing Services
Linda Okamura, UNIX & E-Mail Systems
Martha Patton, Campus Writing Program
Ruth Pavlik, Student Health Center
Kimberly Pethan, Registrar & Director of Admissions
Matthew Petree, Dean of Education-ARC
Linda Pettigrew, Campus Dining Services
Steve Peuster, Printing Services
Peter Pinnell, MRC Administration
Jennie Popkes, Neurosurgical Unit
Margie Powell, MRC Nursing Services
Finis Prewitt, Building Services
Leslie Prothero, Fayette Medical Center
Robert Pruitt, Energy Management
Dorothy Puidk, 5 East Surgery
Darlene Racinowski, Callaway Physicians
Sheri Ramsey, MRC Occupational Therapy
Bonnie Randall, Telecommunications-Health Sciences Center
Paul Randolph, MRC Facility Services
Ann Reberry, Patient Education
Alice Reed, Ellis Fischel Medicine-I/P
Ricky Reed, Printing Services
Patrick Reilly, Curriculum & Instruction
Bonnie Renfro, Medicine-Administrative
Nancy Ridgway, Eye Institute East Clinic
Debra Ritchie, Ellis Fischel Administrative Services
Bridgett Robbins, 4 West Medicine
Stormi Roberts, Development
Carla Roberts, Capsule Pipeline Research Center
Mary Roberts, GM Family Medicine Clinic
Renee Roberts, Telecommunications-Health Sciences Center
Carl Robinson, Supply Distribution-Hospitals & Clinics
Bonnie Rohrer, Respiratory Care Services
Tobias Rojas, Ellis Fischel Laboratory
Daniel Rosenheim, Energy Management
Lynn Russell, Social Work
Mary Rust, MRC Respiratory Care Service
Anita Ryan, Physical Medicine & Rehabilitation

Julie Sampson, Pharmacy
Kathleen Samuel, Accounting Services
Kristyn Sanders, Pediatrics ICU
Michael Sauer, Research Reactor
Michelle Scheidt-Hopkins, Audiology Clinic
Thomas Schimonitz, ITS-User Services
Sybil Schlater, Energy Management
Eric Schlotz, ITS-Clinical Applications
Gary Schmidt, Engineering Services-Hospitals & Clinics
Joni Schupp, Radiology
Allan Schwartz, Anesthesiology
Marshall Selezinka, Energy Management
Barbara Sell, Curriculum & Instruction
Karl Seville, Director of Campus Facilities
Lori Seymour, Dalton Cardiovascular Research Center
Julie Shea, Student Services
Colleen Sheets, Diabetes Clinic
Gina Silvey, Medicine-Administrative
Shelly Silvey, TV Station
Joan Simmerman, Ellis Fischel Patient Accounts / PBX
Larry Skaggs, Residential Life
Shirley Slusing, Surgery-Administration
Karen Smarr, Physical Medicine & Rehabilitation
Kathleen Smith, Veterinary Medicine & Surgery
Dale Smith, MRC Facility Services
Dennis Smith, Supply Distribution-Hospitals & Clinics
Patricia Smith, Building Services
Jada Smith, MRC Speech Therapy
Dale Smith, MRC Facility Services
Jingzhi Song, Women's Health Care Unit
Luella Speakman, American Archeology
James Spies, University Stores
Carolyn Spradling, MRC Housekeeping/Laundry
Dennis Spry, Building Services
Lucy St John, Vice Provost Extension
Ruanne Stamps, Student Health Center
Stephen Stanton, MU Libraries
Tanya Stitt, Publications & Alumni Communications
Cheryl Stohr, Intercollegiate Athletics
Stephanie Stover, Respiratory Care Services
Tammy Strawn, Veterinary Biomedical Sciences
Zhigang Sun, Dean of Journalism
Ajab Taj, Medical Records
Earl Talbert, Planning, Design & Construction
Aaron Tatum, Building Services
Kenneth Taube, Engineering Services-Hospitals & Clinics
Judith Tayloe, School of Nursing
Nancy Taylor, Audit & Reimbursement-University Physicians
Linda Teasley, Mohs Dermatology Clinic
Angie Thomas, Radiology
Teri Thompson, Adolescent Unit

Wanda Tinney, MRC Nursing Services
Pamela Titus, Medicine-Administrative
Cheryl Turner, MIMH-Administration
Linda Turner, Parking & Transportation Services
Rosa Valdez, Neurosurgical Unit
Mari Valley, Pulmonary Function
Dorothy Van Ark, Research Reactor
Teresa Walker, News Bureau
Kelly Walker, TV Station
Sherralyn Wallace, Child Health Speciality Clinic
Gregory Wallace, School of Natural Resources
Laura Ward, Vice Provost Extension
Terri Watts, GM Family Medicine Clinic
Kathleen Welch, Ellis Budget / Shared Services
Patricia Wells, Health Information Center
Sondra Wells, Fayette Medical Center
Teresa Wester, Respiratory Care Services
Rumi Westergren, Engineering Experiment Station
Alan White, University Computing Services
Steven White, Building Services
Christopher White, Planning, Design & Construction
Robert Whitlock, Missouri Kidney Program
John Wilcox, Agronomy
Joyce Wilkerson, Ellis Fischel H I S / Med Records
Kathryn Wilkerson, Fayette Medical Center
Daryl Williams, Supply Distribution-Hospitals & Clinics
Donctella Williams, 4 West Medicine
Cheryl Williams, Radiology-Administration
Diane Williams, Perinatal Unit
Marsha Williams, Housekeeping
Lia Willis, Ellis Fischel Social Services
Christine Winfield, Registrar & Director of Admissions
Marie Winingear, Callaway Physicians
Mary Winterbower, Housekeeping
Louise Wissbaum, Pharmacy
David Witten, ITS-Development/Research
Nicole Witting, Telecommunications
Rex Woodmansee, MRC Nursing Services
Mike Woodson, Engineering Experiment Station
Jason Woodward, Planning, Design & Construction
Yolanda Wright, Residential Life
Debbie Yelton, Cooperative Extension
Ann York, Medical ICU-University Hospital
Leroy Young, Ellis Fischel Anesthesiology
Rachel Yung, Fayette Medical Center
Jeffrey Zeilenga, University Stores
Chunsheng Zhang, International Programs
Kelly Zimmerman, Campus Dining Services/Cash & Catering

Pick up an Apple Powerbook Laptop for \$467!*



Computer Spectrum will be selling **used** Apple PowerBook Laptop 1400cs/117 portable computers for \$467 to the first 250 customers that contact us by April 30th, 1999 and place their order. Distribution of these machines will be the week of May 10-14, 1999. Payment may be made by cash, check or credit cards (VISA, MasterCard, and Discover).

Quantities are limited so don't wait to order. For more information call 882-2131.

Configuration:

- Apple PowerBook 1400cs/117
- 117 MHz PowerPC 603e Processor
- 16MB
- 750MB Hard Drive
- 11.3 Passive Matrix (FSTN) Color Display
- Floppy and CD drives
- Extended Warranty from Apple until August 2000

Also included: Jansport Carrying Case, Dayna 33.6 modem and ethernet cards, and cables

COMPUTER SPECTRUM

Main Level Brady Commons

Sales limited to current MU students, faculty, staff & Departments.

***Limited offer to first 250 customers. Deadline April 30!**

EXPO '99

ADMINISTRATIVE SERVICES

Win a personalized desk plate at **Building Services'** booth ... organic give-aways at **Landscape Services'** booth.

Check out these Campus Facilities booths showcasing services and offering information:

- Campus Facilities, Booth #5
- Building Services, Booths #43, 44
- Energy Management, Booths #25, 26
- Landscape Services, Booths #12, 13, 14
- Maintenance, Booth #24
- Space Planning & Management, Booths #10, 11
- University Auto Leasing, Booth #46

We'll see you there!



10 YEARS

Janet Adair, Pathology
 Cynthia Albers, Veterinary Pathobiology
 Kenneth Albright, Building Maintenance
 Mary Andersen, Medicine-Pulmonary & Environment
 Robert Applewhite, Building Services
 Cathy Asbury, Building Services
 Ken Ash, Show-Me State Games
 Joyce Asher, Child Health-General & Ambulatory
 Terry Atkinson, Planning, Design & Construction
 Kimberly Austin, MRC Pharmacy Services
 Christine Babel, Advanced Technology Center
 Kent Babel, ITS-Clinical Applications
 Sandra Bader, Pediatrics ICU
 Sandra Bailey, Ellis Fischel Intensive Care Unit
 Lora Baker, Chemistry
 Brenda Baker, Intercollegiate Athletics
 Gaye Baker, Ophthalmology
 Gregory Barkwell, Residential Life
 Susan Barnes, MU Libraries
 Lisa Barnes, Editorial Department
 Michael Baroli, Nutrition & Food Services-Hospital & Clinics
 Mary Barr, Linen Services
 Barbara Basnett, ITS-UP Business Applications
 Joseph Batal, Pharmacy
 Mark Bates, Academic Support Center
 Deborah Batterson, Dean of Agriculture
 John Beahler, Publications & Alumni Communications
 Roy Benson, Energy Management
 Sandy Beyer-Vail, Ellis Fischel Outpatient Clinics
 Susan Bingaman, Physiology
 Mary Blades, MRC Accounting
 Lawanda Rogers Blankenship, Campus Dining Services
 Christopher Bliefert, Greenley Farm
 Linda Blockus, Biological Sciences
 N. Denise Boessen, Law (School)
 Cheryl Booze, Patient Accounting-University Physicians
 David Bradley, Ellis Fischel Pharmacy
 Elaine Brady, Pathology
 Phillip Brady, Residential Life
 Joyce Brand, Sameday Surgery Center
 Alzina Britton, Emergency Suite
 John Brothers, University Hospital-Trauma/Surgery Ctr.
 Vikki Brown, Nutrition & Food Services-Hospital & Clinics
 Sylvia Brown, Building Services
 Laura Buck, MU Libraries
 Harold Burnham, Security & Parking Services
 Merrilee Butler, MRC Nursing Services
 Rita Byrd, Accounting Services
 Carol Cable, TV Station
 James Campbell, Anesthesiology & Perioperative
 Scott Campbell, Environmental Health & Safety
 Charles Campbell, MRC Facility Services
 Donna Cargile, MRC Nursing Services
 Anna Carr-Hargis, TV Station
 Genola Caudill, MRC Nursing Services
 Linda Christianson, Development
 Nancy Coil, Clinical Support Services
 Debra Collins, Thoracic ICU
 Laverne Connor, Human Resources-Hospitals & Clinics
 Linda Cooperstock, ITS-Planning/Coordination
 Karen Cox, Clinical Outcomes & Medical Management
 Velma Crane, Pathology
 Liz Cross, 5 East Surgery
 James Crossley, Procurement/Materials Management
 Arlys Crump, Nutrition & Food Services-Hospital & Clinics
 Todd Curnutte, Planning, Design & Construction
 Russell Daniels, MRC Assisted Support Services
 Jeanne David, Academic Support Center
 Jane Debellis, MU Libraries
 Jan Degraffenreid, Thoracic ICU
 Debbie Dejonge, Patient Accounts-Hospitals & Clinics
 Teresa Delima, Nursing NICU
 Kerry Delisle, Clinical Engineering
 Jeffrey Denison, Research Reactor
 Doris Dodson, Center/Reproductive Science & Technology
 Judith Donovan, Pathology
 Peter Ely, Sameday Surgery Center
 Melissa Evans Blumer, Research Reactor
 Sharon Fair, Housekeeping
 Charles Fairfax, Research Reactor
 Melissa Fayad, Law Library
 Jill Fertig, Transitional Living-MRC
 Norma Finley, Nutrition & Food Services-Hospital & Clinics
 Ann Fitzpatrick, Biological Sciences
 Deborah Flattem, MRC Nursing Services

Thomas Flood, Landscape Services
 Barbara Foos, Psychiatry/Neurology-Administration
 James Forbis, Residential Life
 Brenda Forsee, Crossroads Clinic
 Margie Freese, Registrar & Director of Admissions
 William Freese, ITS-Network
 Donald Friedrich, Ellis Fischel Food Services
 Cheryl Fry, Pharmacy
 Kristine Fry, Thoracic ICU
 Debra Fuemmeler, ITS-User Services
 Darren Gabbert, LAN Administration Desktop Support
 Linda Garth, Academic Retention Services
 Janice Gartman, Neurosurgical Unit
 Martin Geerlings, Ellis Fischel Engineering
 Kathy Gehrig, Medical Records
 Carol Geisler, Dean of Veterinary Medicine
 Angela George, Animal Science
 Rita Gerke, Horticulture
 Keith Getz, Energy Management
 Mary Giles, Surgical Services
 Kay Goben, Civil & Environmental Engineering
 Jason Goran, School of Information Science & Learning
 Michael Gregory, Energy Management
 William Grieshaber, Patient Accounting-University Physicians
 Amelia Grotzinger, Dean of Graduate School
 Ellen Guthrie, Vice Chancellor Student Affairs
 Jim Gwinner, Helicopter Service
 Mary Halbert, Marketing
 Janet Hale, Health Information Center
 Becky Hardesty, Director of Campus Facilities
 David Harris, MRC Facility Services
 Mary Harris, Romance Languages & Literature
 Tracy Heisler, Procurement/Materials Management
 Kristen Heitkamp, Vice Provost Extension
 Darren Hellwege, FM Station-KBIA
 Robert Hill, Publications & Alumni Communications
 Wanda Hillerman, 5 East Surgery
 Joseph Hoeferlin, Dean of Journalism
 Daffany Hood, University Club University Catering
 Lynn Houg, Engineering Services-University Hospitals & Clinics
 Jeffrey House, Agronomy
 Nancy Hudson, Same Day Surgery
 Virginia Huenefeldt, Medicine-Administrative
 Ali Hussam, Advanced Technology Center
 Ricky Jackman, Nutrition & Food Services-Hospital & Clinics
 Theresa Jackson, Human Resources-Hospitals & Clinics
 Gary James, Planning, Design & Construction
 Toni James, Medical ICU-University Hospital
 Rhonda James, Dean of Agriculture
 Teresa Janney, Helicopter Service
 Marsha Johnson, Surgical Services
 Martha Jones, Dean of Agriculture
 Deon Jones, Housekeeping
 Conway Jones, Student Financial Aid
 Bonnie Kellum, Nutrition & Food Services-Hospital & Clinics
 Cindi Kelly, Agricultural Economics-FAPRI
 Wanda Kent, Religious Studies
 Lisa Kile, Clinical Engineering
 Kathy Kroll, Vice Provost Extension
 Mickie Kummer, Obstetrics & Gynecology
 Alan Lair, Student Services
 Kathy Lamere, Molecular Microbiology & Immunology
 Lori Lammers, Sponsored Program Administration
 Susan Lasley, Research Support Services
 Jon Lawson, Campus Dining Services
 Melissa Lee, Chancellor's Office
 Charles Lee, Planning, Design & Construction
 Donald Leimkuehler, Short Stay / 23 HR Obs Center
 Judith Letourneau, Education & Counsel Psychology
 Tyeece Little, Biological Sciences
 Anna Logan, Nutrition & Food Services-Hospital & Clinics
 Penny Lorenz-Bailey, Physical Medicine & Rehabilitation
 John Love, Energy Management
 Sheila Lumley, Supply Distribution-Hospitals & Clinics
 Allen Maddy, Veterinary Pathobiology
 Marjorie Mangels, Sameday Surgery Center
 Roy Martel, Adolescent Unit
 Ken Martinez, Safety-University Hospital
 Lisa Maurer, ENT Clinic
 Daryl Meller, Planning, Design & Construction
 Wanda Merriott, Building Services
 Glen Mieir, Director of Campus Facilities
 George Miller, Educational Consulting Services-Hospital
 Lynda Miller, Telecommunications
 Willard Miller, Ellis Fischel Short Stay Center
 Sue Mills, Development

Phyllis Mitchell, Veterinary Pathobiology
 Julie Moore, Medicine-Administrative
 Patricia Moore, Environmental Health & Safety
 Paul Morris, Energy Management
 Delbert Musgrove, Residential Life
 Connie Musick, Ellis Fischel Surgery-I/P
 Sandy Neal, Human Resource Services (MU)
 Merita Nettles, Entomology
 Brian Neuner, TV Station
 Kirby Nichols, Warehouse Operations
 Brenda Noblitt, Student Financial Aid
 Robin Nuttall, Special Education
 Brenda O'Conner, MRC Pharmacy Services
 Judith Olson, Family & Community Medicine
 Clay Oswald, Planning, Design & Construction
 David Owen, Radiology
 Linda Owen Pedrole, Academic Support Center
 Rebecca Oyelola, Pediatrics
 Emmanuel Oyelola, Laboratory Animal Medicine
 David Padilla, MRC Storeroom
 Kathy Patterson, University Stores
 Bryan Pemberton, Building Maintenance
 Phyllis Pendleton, MRC Nutrition/Food Services
 Jordan Perry, Police
 Mary Phillippe, Emergency Suite
 Thomas Pitchford, Vice Provost Extension
 Quilla Porter, Building Services
 Brian Porter, Campus Mail Service
 Sandra Powers, Cashier/Payroll/Student Loans
 Rita Preckshot, Chemical Engineering
 Robin Province, Ellis Fischel Surgical Service
 Judy Raetz, 4 West Medicine
 Beverly Ramos, Campus Dining Services
 Paula Randall, 5 East Surgery
 Angela Randolph, Adolescent Unit
 Scottie Rawlings, Clinical Dietetics
 William Reahr, Supply Distribution-Hospitals & Clinics
 Steven Rhodes, TV Station
 Karen Rhodes, MIMH-Continuing Education
 Judy Richey, School of Information Science & Learning
 Linda Richter, Pathology
 Ellie Ridgway, Housekeeping
 Judith Rinker, MRC Nursing Services
 Robert Roberts, University Stores
 Allan Roberts, Printing Services
 Linda Rockers, MRC Nursing Services
 Sharon Rodes, Vice Provost Extension
 Melinda Roe, Patient Accounts-University Hospitals & Clinics
 Mohammed Roohparvar, Surgical Services
 Paul Rowoth, Analytical Services
 Sherilyn Russell, Vice Provost Extension
 Karen Sagehorn, Helicopter Service
 Joseph Sanford, Multipurpose Auditorium
 Barbara Sapp, Pathology
 Glenda Sapp, Ellis Fischel Laboratory
 Sarah Scanlon, Biochemistry (Medicine)
 Michael Schaffner, Animal Science
 Bruce Schlater, Engineering Services-Hospitals & Clinics
 David Schmidt, TV Station
 Margaret Schrader, Law (School)
 Sally Schwartz, Industrial/Manufacturing Systems Engineering
 Linda Shives, University Stores
 Laura Shrum, Surgical Services
 Carolyn Siegel, Nursing Nursery I
 Tammy Simpson, Admissions-University Hospitals & Clinics
 Georgia Sims, Medicine-Administrative
 Gloria Smith, External Affairs-Alumni
 Leeclair Smith, Pulmonary Function
 Lyndell Smith, Special Education
 Barbara Smith, Patient Accounting-University Physicians
 Joan Smith, Landscape Services
 Kathryn Smith, MU Libraries
 John Snipes, Building Services
 Val Solomon, Accounting-University Hospital
 Richard Spence, Building Services
 William Taylor, Building Maintenance
 Wally Thomas, Pathology
 Lorie Thunhorst, Campus Mail Service
 Cecilia Tracy, Parking & Transportation Services
 Vicky Tubbs, Sterile Processing
 Sherry Turbyville, 4 West Medicine
 Vincent Twenter, Building Maintenance
 Rita Twillmann, Plan Administration-University Physicians
 Brian Vogelsmeier, Cooperative Extension
 Joann Vogt, Campus Writing Program
 Betty Vollmer, ITS-Development/Research

June Wallace, GM Internal Medicine Clinic
Mark Waller, Security & Parking Services
Patti Ward, Special Education
Jayne Ward, Food Science & Nutrition
Michele Weirich, Clinical Dietetics
Judith Wells, Intercollegiate Athletics
Marilyn White, Patient Accounting-University Physicians
Lisa Wilkinson, Staffing Support Services
Cleo Wilson, Fertilizer Control
Michael Wimmenauer, Multipurpose Auditorium
Rick Wise, Printing Services
Annette Wiseman, School of Natural Resources
Joanne Witting, Radiology
Irene Wolf, Learning Center
Michele Wright, Perinatal Unit
Mary Wulff, Nutrition & Food Services-Hospital & Clinics
Pearlly Yan, Pathology & Anatomical Science
Kathryn Yardley, Sociology

15 YEARS

Steven Abernathy, Vice Provost Extension
Marsha Aitken, Animal Science
Virginia Allen, Pastoral Care
Karla Alsberge, Family & Community Medicine
Anita Alspaw, Ellis Fischel Pharmacy
Ronald Armentrout, ITS-Hospital Business Applications
Brian Begemann, Energy Management
Doreen Bempah, Pediatrics
Glenn Berkey, Surgical Services
Ronald Betz, Honors College
Brenda Betz, Program for Excellence in Teaching
Dennis Birmingham, Ellis Fischel Engineering
Peggy Blackmore, Short Stay / 23 HR Obs Center
Denise Boland, Surgery-Plastic
Kenneth Brokamp, Academic Support Center
Elaine Bruno, ITS-Data Administration
Linda Bryson, Medical Records
Linda Buchheit, Perinatal Assessment
Jane Burcham, Computer Engineer & Computer Science
Carol Conley, Pathology
Gayle Coolley, University Computing Services
Sherry Corwin, Purchasing-University Hospitals & Clinics
Audrey Cox, Security & Parking Services

James Cutts, ITS-Development/Research
Margie Dailing, Main Street Snack Corner
Nancy Dawson, Pathology
Deborah Dilks, Coordinated Engineering Program
Judy Dill, MRC Nursing Services
James Dollins, Building Maintenance
Connie Dunn, Military Science
Linda Eckerle, Patient Centered Care
Judy Elam, Sociology
Betsy Ellis, Veterinary Medicine & Surgery
Aimee Erard, Patient Accounting-University Physicians
John Ernst, Research Reactor
Kelly Faubion, Neurosurgical Unit
Susan Friess, Associate Director Children's / Women's
Rita Garoutte, Physical Therapy-MRC
Carolyn Gibbons, Family & Community Medicine
Roger Giles, Environmental Health & Safety
Nancy Green, Orthopaedic Surgery
Tammy Green, MU Libraries
Harriett Green Sappington, Residential Life
Dola Haessig, Office of Research
Evelyn Harned, External Affairs-Telemedicine
Gina Harris, Women's Health Care Unit
Carolyn Heilman, Cooperative Extension
Paul Heilman, Research Support Units
Mimi Hess, ITS-Development/Research
Rita Houg, Residential Life
Sandra House, Management
Kerry Howell, Cooperative Extension
J. Larry Hubbard, Planning, Design & Construction
Lynn Hudson, Medical Records
Regina Huggins, Medicine-Administrative
Paul Hurt, Pathology
Robert Jordan, Residential Life
Susan Kauffman, Family & Community Medicine
Charles Kelly, Residential Life
Everett Kettner, CEP-Mechanical Engineering
Eileen King, Patient Centered Care
Dian Kittle, Anesthesiology & Perioperative
Gail Kraus, Animal Science
Carol Krause, Continuous Quality Improvement-Hospitals/Clinics
William Lane, Housekeeping
Jeannie Lawless, Thoracic ICU

Amy Lenk, Dean of Journalism
William Mccord, Radiology-Administration
Mary Mccush, Civil & Environmental Engineering
Patricia McDaniel, Sterile Processing
David McReynolds, Building Maintenance
Martha Kay Meler, Ellis Fischel Outpatient Clinics
Christine Meler, Ellis Professional Services
Marsha Miller, School of Informational Science & Learning
Joe Montgomery, Dialysis & Transplant
Martha Moseley, Pharmacy
Jake Moyer, Building Services
Sherrie Neff, Laboratory Animal Medicine
Flo Nelson, Veterinary Medicine & Surgery
Karen Nickell, Patient Centered Care
Carol Nierling, Women's Health Care Unit
Michael O'Connor, Energy Management
Ronald Ott, Printing Services
Shirley Owen, Mexico ENT-University Physicians
Donna Pace, Pathology
Nathaniel Paige, Campus Mail Service
Patricia Pauley, Special Education
Richard Penn, Student Services
Bruce Perkins, School of Natural Resources
Brenda Petree, Nutrition & Food Services-Hospital & Clinics
Elizabeth Pfeiffer, Nursing Nursery I
J. Michael Philips, Administration- Hospitals & Clinics
Clayton Pickens, Clinical Engineering
Timothy Praiswater, Entomology
Donna Puleo, University Events
Denise Quinlan, Medicine-Hematology & Oncology
Paul Raker, Pediatrics ICU
Rene Rau, Dean of Journalism
Ethel Reeder, ITS-Data Administration
Twyla Robinson, Accounting-University Hospital
Cindy Roller, Pathology
Timothy Rooney, Dean's Office-Medical School
John Russell, TV Station
Linda Sanders, Campus Dining Services
Rebecca Schedler, MU Libraries
Reggie Scott, ITS-User Services
Carla Sears, Veterinary Diagnostic Lab
Nancy Shaw, Neonatal Transport
John Shopland, Horticulture & Agroforestry Center

Service League Auxiliary of the University Hospitals and Clinics

Spring Plant Sale

Friday, April 23
8 a.m. to 4 p.m.

University Hospital and Clinics (by Main Street Snack Corner)
For more information call 882-1053

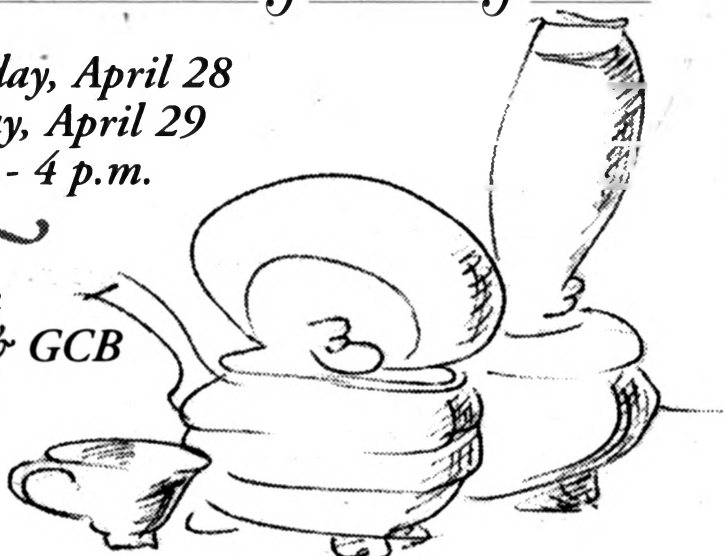
Bedding plants, perennials, vegetable plants,
hanging baskets and more.

Proceeds will benefit the University Hospitals Service League Auxiliary, which purchases equipment for University Hospital and Children's Hospital.

Mother's Day Pottery Sale!

Wednesday, April 28
Thursday, April 29
10 a.m. - 4 p.m.

Between
Brady & GCB



Sponsored by MUCK (Missouri University Clay Klub) & the MSA/GPC Craft Studio.
For more info call 882-2889.

Classifieds

REQUESTS

Professor, commuting from out of town, seeks
lodging Tuesday and Wednesday evenings for
Fall '99 and Winter '00. Call 816-523-1340.

Are you going on sabbatical? Visiting Professor
needs furnished house (preferred) or
apartment approximately May 15-Oct 1.
References available. Call 882-6131 during
office hours or 402-463-3995 for further
information.

New professor, husband and two well-behaved
cats seeking an unfurnished or furnished
home to sublet summer and fall of 1999.
Email to sswan@igc.org or call 541-338-4010.

Need a housesitter this summer? Assistant
Professor, currently renovating his own
house, seeks free or inexpensive
accommodations May to mid-August. Exact
dates flexible. Will take on some domestic
chores. 817-0664.

SERVICES

Professional editing: Ph.D. in English with
twenty years college teaching, experienced in
editing, will edit books, articles, proposals,
dissertations, major papers, or presentations.
Telephone 573-446-0959 during normal office
hours.

FOR SALE

Queen size, cherry wood, four-poster, bedframe
(headboard, footboard; rails). Half of original
price—now \$400. Call after 5:30 or leave
message. 875-4056.

1992 ACURA LEGEND L SEDAN. Excellent
condition, automatic transmission, Anti-lock

brakes, Dual air bags, leather seats, air
conditioning. Power features throughout, sun
roof. One owner, low miles. \$12,900. 443-
4162.

1994 NISSAN QUEST MINI-VAN. TOP OF LINE
GXE. Excellent condition, automatic, Anti-lock
brakes, air conditioning, privacy glass.
Numerous luxury features throughout.
Captain's chairs. Cruise control, One owner,
\$12,995. 443-4162.

MOVING SALE: Organ, Electric Accordion, Dining
Room and Kitchen, Kenmore Washer, card
table, bikes, leather chair, new 6' Christmas
tree, single bed, yard tiles, misc. Call Jo
Sanders, 442-3699.

FOR RENT

Wooded Grasslands area: Unfurnished 3 bdrm, 3
baths, fireplace, patio, deck, new carpet &
paint, no smoking, no pets. Near U-hospitals,
campus, MKT trail. \$850. 875-5065.

WANTED

WANTED: Rental Properties on campus to
purchase. Please send specifics (location,
price, current rents, etc.) to:
ZelenakM@missouri.edu or call 443-4162.

MISCELLANEOUS

Co-housing community forming in Columbia.
Looking for partners in developing a more
sharing, caring way of life. For a presentation
or more info. call Jay, Casey or Kathy @ 814-
3632.

THE CLASSIFIED ADVERTISING SECTION is open to
faculty and staff members, and retirees. A home
phone number is required in all ads.
No refunds will be given for cancelled ads.
Rates: 30-word maximum \$7.50.
Missouri Weekly Classifieds: Make your check
payable to University of Missouri and send to
Missouri Weekly, 407 Reynolds Alumni Center,
Columbia, Mo. 65211. Attention: Tanya Stitt.

Patsy Short, Nutrition & Food Services-Hospital & Clinics
Deborah Smith, Nursing NICU
Matthew Smith, Residential Life
Elizabeth Smith, ITS-Hospital Business Applications
Theresa Stathem, Heart of Missouri Clinics-Sedalia
William Stetzel, Building Services
Phyllis Stone, Facility Services-University Hospitals & Clinics
Elizabeth Sutton, Telecommunications-Health Sciences Center
Paul Szopa, Academic Support Center
Trudy Taber, Mohs Dermatology Clinic
Suzanne Terrell, Helicopter Service
Frances Tompkins, Telecommunications-Health Sciences Center
Carol Twenter, Residential Life
John Van Hook, Engineering Services-Hospitals & Clinics
Sally Viehland, Pediatrics
Marveta Vinyard, Procurement/Materials Management
Janet Wagner, Academic Support Center
Brenda Warren, Art
Mary Warren, Pathology
Marilyn Wheeler, Medical Records
Jane Williams, Physiology
Ruth Wright, Dean of Arts & Science
Daniel Zumwalt, Planning, Design & Construction

20 YEARS

Joanne Adams, Veterinary Diagnostic Lab
Vicki Alexander, Pathology
Thomas Angelo, Pathology
Diane Arnel, Nutrition & Food Services-Hospital & Clinics
Kenneth Beamer, Research Reactor
Barbara Bell, Information & Access Technology Services
Alan Bernhardt, Patient Centered Care
Charles Bittle, Building Maintenance
Mary Bixby, Learning Center
Boyd Bolin, MRC Facility Services
Ernest Brown, Multipurpose Auditorium
Marlyn Burks, Molecular Biology
Sharon Burnham, Soil and Atmospheric Sciences
Susan Burns, Dean of Education Undergraduate Studies
Connie Colley, Cashier/Payroll/Student Loans
Roberta Cooke, Family & Community Medicine
Phyllis Cox, Dean of Education-ARC
Debra Cram, 5 West Surgery
Roger Crumpton, Multipurpose Auditorium
Mary Daniel, Vice Provost Extension
Jack Daugherty, MRC Facility Services
Susan De Courley, Medical Research Office
Pete Dohm, Engineering Experiment Station
Victoria Duncan, Pathology
Kathleen Edwards, MU Libraries
Patricia Eggleston, History
Victoria Eichhorn, MIMH-Administration
Sheri Elder, Information & Access Technology Services
Marilyn Ellis, Biological/Agriculture Engineering
Mary Erickson, MRC Nursing Services
Sharon Eubanks, Vice Provost Extension
James Fitzgerald, Forage Systems Research Center
Trudy Ford, GM Internal Medicine Clinic
Galynn France, Research Reactor
Ralph Galbreath, Landscape Services
Wilford Garton, ITS-Data Administration
Ronald Geren, Ellis Fischel Engineering
Fred Givens, Energy Management
Margaret Grammer, Patient Accounts-Hospitals & Clinics
Sherri Griffy, Agricultural Education
Connie Groves, Building Services
Russell Hanson, Environmental Health & Safety
Mary Hardesty, Academic Support Center
Billy Hardy, University Computing Services
Patricia Harrison, Patient Centered Care
Patsy Hart, Administration-University Hospitals & Clinics
William Hayes, Recreational Services
Robert Heinz, Plant Pathology
Marilyn Himmelberg, Rural Sociology
Kay Houchins, Campus Mail Service
Bruce Hughes, Energy Management
Kenneth Hulen, Procurement/Materials Management
Bill Johns, Veterinary Medicine & Surgery
Jacquelyn Jones, Business Services
Richard Jones, Planning, Design & Construction
Joe Jones, Building Services
Lewis Karney, Energy Management
Barbara Keith, Landscape Services
Patrice Koehner, Health Management & Informatics
Caroline Lanham, Alumni Activities
Fred Lee, Warehouse Operations-University Hospital & Clinics

Mary Leyba, MRC Management Information Systems
Laurence Logan, Building Services
Larry Long, Building Maintenance
Dorothy Long, English
Peggy Loy, American Archeology
Karla Malaney, Medicine Center-University Hospital
John Marston, Laboratory Animal Medicine
Gail Martin, Development
Dale Milam, Cashier/Payroll/Student Loans
Judith Moore, Ellis Fischel H I S / Med Records
D Patrick Morton, Institutional Research Budget and Planning
Philip Muse, University Computing Services
Ronnie Parker, Networking, Planning, Support
John Payne, MU Libraries
Marica Putnam, Building Services
Doris Reno, Procurement/Materials Management
Brenda Roberts, Surgical Services
Donita Samuels, Printing Services
Eddie Sapp, Printing Services
Carolyn Sapp, Sameday Surgery Center
Dasi Schlup, Social Services
Jeffery Schneider, Building Maintenance
Roberta Settergren, Dean's Office-Medical School
Curtis Sheets, Campus Mail Service
Byron Smith, Building Services
Cathryn Taggart, Purchasing-University Hospitals & Clinics
Vijayan Thomas, Supply Distribution-Hospitals & Clinics
Betty Toops, Cashier/Payroll/Student Loans
Thi Tran, Research Reactor
Shirley Turner, Thoracic ICU
Gregory Warren, Building Maintenance
Donna Whitener, Chemistry
Dale Wilcox, Dean of Arts & Science
Daisy Wilson, Campus Dining Services
Lisa Wimmenauer, Business Services
Donald Wood, Surgery-Cardiothoracic
William Wood, Pathology
Ellen Wyllie, Vice Provost Extension
Benjamin Young, Multipurpose Auditorium

25 YEARS

Richard Adams, Energy Management
Leroy Anthony, Laboratory Animal Medicine
Lynn Ash, Information & Access Technology Services
Kenneth Bassett, Building Maintenance
Susan Bauer, Children's Hospital Support
Donald Brooks, Building Maintenance
Cheryl Brown, MRC Pathology
Rhonda Brown, Audit & Reimbursement-University Physicians
Paula Bullock, Infection Control
Paul Cary, Pathology
Leo Clevenger, Food Science & Nutrition
Gary Crumly, ITS-Data Administration
Jill Cunningham, Food Science & Nutrition
Gwendolyn Curtis, Pathology & Anatomical Science-Pathology
Libby Ellis, Budget & Reimbursement-Hospitals & Clinics
Pamela Endres, Admissions-University Hospitals & Clinics
Christine Errante, Research Reactor
Dorothea Farmer, Radiology-Administration
Brenda Fenley, University Computing Services
Gary Fields, Energy Management
Frances Fisher, Procurement/Materials Management
Jim Forward, Multipurpose Auditorium
Stanley Freeman, Residential Life
Helen Garner, MRC Housekeeping/Laundry
Marie Gatewood, Cooperative Extension
Hattie Gatewood, Nutrition & Food Services-Hospital & Clinics
Steven Gibson, Engineering Services-Hospitals & Clinics
Stephen Gunn, Research Reactor
Roy Hale, Patient Accounts-University Hospitals & Clinics
Mary Hartigan, International Programs
Janet Hartman, Obstetrics & Gynecology
Daniel Hatfield, Veterinary Medicine & Surgery
Russell Havens, Planning, Design & Construction
Susan Hazelwood, Office of Research
Christopher Heffner, Energy Management
Genevieve Hill, Family & Community Medicine
David Holmes, Supply Distribution- Hospitals & Clinics
Arthur Howren, Dean's Office-B&PA
Steven Huffman, Pathology
Carol Hunt, MRC Pharmacy Services
Donna Kespohl, Patient Accounts-University Hospitals & Clinics
Gina Kincaid, Special Events-University Hospitals & Clinics
Eddie Lane, Building Maintenance
James Lewis, MRC Nutrition/Food Services
Penny Martie, Ellis Fischel Purchasing / C S

Dorothy Martin, Adolescent Unit
Kenneth Mason, Landscape Services
Sandra Mason, MRC Nursing Services
Daniel Mayfield, Pediatric Cardiology
Knowles McGehee, MRC Nutrition/Food Services
Victor Menzel, University Computing Services
Patra Mierzwa, Medicine-Immunology & Rheumatology
Evelyn Miller, Warehouse Operations-Hospital & Clinics
Wanda Mills, Linen Services-University Hospital & Clinics
Teresa Newman, Agronomy
Ronald Nowlin, Student Services
Karen Olinger, Veterinary Medicine & Surgery
Kenneth Parmer, Engineering Services-Hospitals & Clinics
Nettie Phillips, Physical Medicine & Rehabilitation
Richard Quisenberry, University Computing Services
Anthony Ray, University Computing Services
Charles Redmon, Dean-Curriculum
Charles Schouten, Research Support Services
Connie Sharp, Landscape Services
Jamieson Shotts, Environmental Health & Safety
Carol Slusher, Vice Provost Extension
Rosanne Smith, University Computing Services
Carol Sommers, Physical Medicine & Rehabilitation
Glenda Stevens, Patient Accounting-University Physicians
Beverly Stone, Printing Services
Deborah Strodtman, Classical Studies
Pamela Swims, Delta Center
Freda Tapp, Pathology
Gary Taylor, Residential Life
Roy Thornton, Printing Services
Evelyn Tyler, Admissions-University Hospitals & Clinics
Carol Walker, Medical Records
Tonwya Walker, MRC Nursing Services
Stella Washington, Campus Dining Services
John Watt, Planning, Design & Construction
Martha Whitfield, Building Services
Robert York, Multipurpose Auditorium
Roy Youtsey, Police

30 YEARS

Rebecca Benedict, Printing Services
Linda Bennett, Plant Pathology
Linda Benway, Nutrition & Food Services-Hospital & Clinics
Barry Bezenek, Research Reactor
Clara Carter, Development
Robert Cathey, Analytical Services
Julia Curry, Building Services
Nancy Forrest, Supply Distribution, Hospital & Clinics
Bill Frazier, University Computing Services
Russell French, LAN Administration Desktop Support
William George, Building Maintenance
Ila Guthrie, Campus Dining Services
Kathleen Hildebrand, Surgical Services
Larry Housley, MRC Nursing Services
Fon Johnson, MRC Nursing Services
Mary Johnson, Ellis Fischel Administrative Services
Sharron Kelly, Child Health-Administration
Doris Lyons, Cooperative Extension
Eva Moore, Cashier/Payroll/Student Loans
Grace Neal, Linen Services-University Hospital & Clinics
Patsy Nelson, Campus Dining Services
Ada Nevels, Building Services
Carrie Oetker, MRC Nursing Service Outpatient
Donna Piltoski, Printing Services
Eva Reid, Printing Services
Marjorie Reid, Music
Sue Richardson, Publications & Alumni Communication
Karen Salmon, Registrar & Director of Admissions
Dorothea Sapp, ITS-User Services
Thomas Seeger, Research Reactor
Martha Smith, Ob/Gyn Services
Elizabeth Souder, Residential Life
Georgia Stevens, Campus Dining Services
Rex Taggart, Engineering Services-Hospitals & Clinics
Nolan Tritschler, Research Reactor
Susan Turner, Child Health-Administration
Cathy Turner, Cashier/Payroll/Student Loans
Paul Urzi, TV Station
Mary White, Engineering Experiment Station
Dick White, Human Resources-University Hospitals & Clinics
Jesse Williams, Ambulance Service
Shirley Zaring, Registrar & Director of Admissions

35 YEARS

Wilma Bradley, MRC Accounting
Earl Burry, Police
Harold Coleman, Building Maintenance
Harold Curtis, Building Services
Carolyn Fischer, Procurement/Materials Management
Russell Grant, Residential Life
Carol Green, MU Libraries
Kathryn Gross, Campus Dining Services/Residence Halls
Ruth Harlow, Ellis Fischel H I S / Med Records
Linda Jackson, Printing Services
Harold Laroe, Landscape Services
James Lay, School of Nursing
Barbara Long, Horticulture
Karen Maddox, Campus Dining Services
Philip Miller, Police
Orah Mockbee, Family & Community Medicine
Phillip Moritz, Printing Services
James Reddick, Ellis Fischel Engineering
Letha Simmons, Campus Dining Services
Lonnie Todd, Printing Services
Patsy Urban, Procurement/Materials Management
Kenneth Vaughan, Building Maintenance

40 YEARS

Hugh Barnes, Landscape Services
Lloyd Benedict, Residential Life
Sharon Kile, MU Libraries

Retirees

5 TO 10 YEARS

Verna Corinne Alspaw, Veterinary Pathobiology
Anna Louise Carroll, Building Services
Frank L. Fenton, Telecommunications
Anna L. Goodman, Personnel
William F. High, Ellis Laboratory
Darla Jean Johnson, Nursing NICU-Float
Juanita L. Kahle, Mathematics
Alvie J. Lummus, Facilities Design & Development
Madolyn M. Mason, Research Reactor
Henedine F. Stewart, Short Stay / 23 HR Obs Center
Ruth Ann Tapp, Staffing Support Services

11 TO 15 YEARS

Margaret A. Berends, Learning Center
Ross O. Dickerson Jr, Plant Engineering
Joan H. Dohrer, Employee Health Clinic
Constance L. Knowles, Sociology
William E. Knowles, Printing Services
Warren Likins Jr, Research Support Units
Mary Marshall, Dean of Education-ARC
Raymond J. Morrison, Environmental Health & Safety
Carl Eugene Nichols, Plan, Design & Construction
Johnnie Mae Palmer, Building Services
R. Eileen Patton, Emergency Suite
Lucille D. Salerno, Psychology
Shirley L. Whaley, Campus Dining
Patricia Rae White, Theater

16 TO 20 YEARS

Susan K. Arnold, Alumni Activities
Ted L. Bennett, Construction
Carolyn Sue Bunton, Medical Records
Ronald K. Cauwenbergh, Financial & Facilities Planning
John O. Christianson, Research Support Units
Gail Mann Forrest, Surgical Services
Carol Kathryn Keene, Surgery-Administration
Edith Darlene Miles, Alumni Activities
Lois Bernice Nauert, ITS-Clinical Apps
Edward R. Schulz, Security & Parking Services
Raymond G. Stuart, University Computing Services
Jackie Sumpter, Ellis Engineering
Dorothy Louise Swiney, Cooperative Extension

21 TO 25 YEARS

Willa Adelstein, Associate Director Medicine Center
Robert Gene Aitkens, Student Services
Donna Marie Brown, Endoscopy Center
Rothetta Coonce, Vice Provost Extension
Ruth Ellen Davis, Linen Services
Annabell W. Dexheimer, Director of Campus Facilities
Peggy Lee Kemp, 5 East Surgery
Virginia W. Nettleton, Vice Provost Extension
Tim Edward Phillips, Landscape Services
Loretta Pound Ross, Pathology
Joyce A. Schlemper, Child Health-Administration
Carol Louise Skinner, Veterinary Medicine & Surgery
Pensa McCoy Taylor, Linen Services

Patsy Dean Via, Patient Accounting
John William Wingate, Building Maintenance

26 TO 30 YEARS

Anna M. Brewer, Patient Accounting
Sarah K. Brown, Registrar & Director of Admissions
Dale Nelson Christian, Plan, Design & Construction
Bonnie H. Heidy, Vice Provost Extension
Josephine Johnson, Library
Mary M. Miles, MRC Administration
Junior Eugene Prince, Procurement/Materials Management
Dale B. Trask, Procurement/Materials Management
Frances C. Willis, 5 West Surgery

31 TO 35 YEARS

Franklin A. Brown, Police
Sylvester Leonard Cason, Nutrition & Food Services
Gary Thomas Chandler, Plan, Design & Construction
Lonnie Dale Crane, Residential Life
Jerry Wayne Dehaven, Plan, Design & Construction
Kenneth Ray Kintner, Facilities Design & Development
Russell Dean Laroe, Energy Management
Brevard J. Law, Vice Provost Extension
Carl Ward Leistner, International Programs
Wanda Marie Ocrey, Pathology
Donald Eugene Quinn, Landscape Services
Patricia Quinn, Dean-Curriculum
Mary Edith Roddy, Nutrition & Food Services
Martha Nan Sapp, Anesthesiology
Anna R. Turner, Residential Life
James Lewis Via, Building Maintenance
Delbert D. Wheeler, TV Station
Billie Charlene Wilkinson, Patient Accounts

36 TO 40 YEARS

Jennie Driskill, Perinatal Unit
Thomas R. Gray, TV Station
J.B. Meyer, Building Maintenance
Barbara Noraleen Olds, Medical Records

40 TO 45 YEARS

Luther B. Caldwell Jr, Plan, Design & Construction
Sonia Kotiw Reeder, Cooperative Extension

MIZZOU PEOPLE

Awards & Honors

The MU Black Alumni Organization in January honored **Arvarh Strickland**, professor emeritus of history, and **Clyde Ruffin**, professor of theater with the organization's distinguished faculty award.
J. Thomas Cunningham, assistant professor of physiology, received the 1999 Young Investigator Award in Regulatory and Integrative Physiology from the American Physiological Society. The award recognizes Cunningham for his cellular neurophysiological approach to study neural mechanisms which integrate control of body fluid homeostasis and cardiovascular regulation.
Several faculty and staff received awards at the Arts and Science Week award ceremony in February. **James Curtis**, professor of German and Russian studies; **Raymond Herbert**, professor of music; and **Robin Hurst-March**, instructor in biological sciences, received Purple Chalk Awards for teaching excellence. **Marie Sloan**, academic adviser in history, received the Blue Chalk Award for advising excellence. **Christine Favazza**, director of Intercollegiate Athletics' Total Person Program, received the Mentor of the Year Award at the WIN for Columbia Awards in February, part of the National Girls and Women in Sports Day Awards.
MU's 1997 student yearbook, *Savitar*, received an award of excellence for

yearbook design and coverage from the Taylor Publishing Co. The adviser of the 1997 *Savitar* is **David Roloff**, coordinator for advertising and promotions with University Stores.

Barbara Townsend, professor of educational leadership and policy analysis, received the Patricia Farrant Award from the National Association for Women in Education for the best article in the 1998 volume of *Initiatives*, the association's journal. Her co-written article is titled "Gender Equity in Collegiate Sports: The Role of Athletic Associations."

Appointments & Promotions

Steve Friesen, assistant professor of religious studies, was appointed in February to a three-year term on the American Academy of Religion's committee on international connections.
James Groccia, director of the Program for Excellence in Teaching, took part in a design team for the American Council on Education and the USA Group Foundation cost management project in February in Washington, D.C.
Aaron Krawitz, professor of mechanical and aerospace engineering, has been appointed to the instrument oversight committee for the spallation neutron source facility to be constructed at Oak Ridge National Laboratory. He also has been appointed to the advisory board for the Spectrometer for Materials Research at Temperature and Stress (SMARTS) at Los Alamos National Laboratory, and to the international scientific board for the sixth International Conference on Residual Stresses to be held

in Oxford, England in July.

Keith Sanders, professor of journalism, has been re-elected executive director of Kappa Tau Alpha, a national honor society in journalism and mass communication.

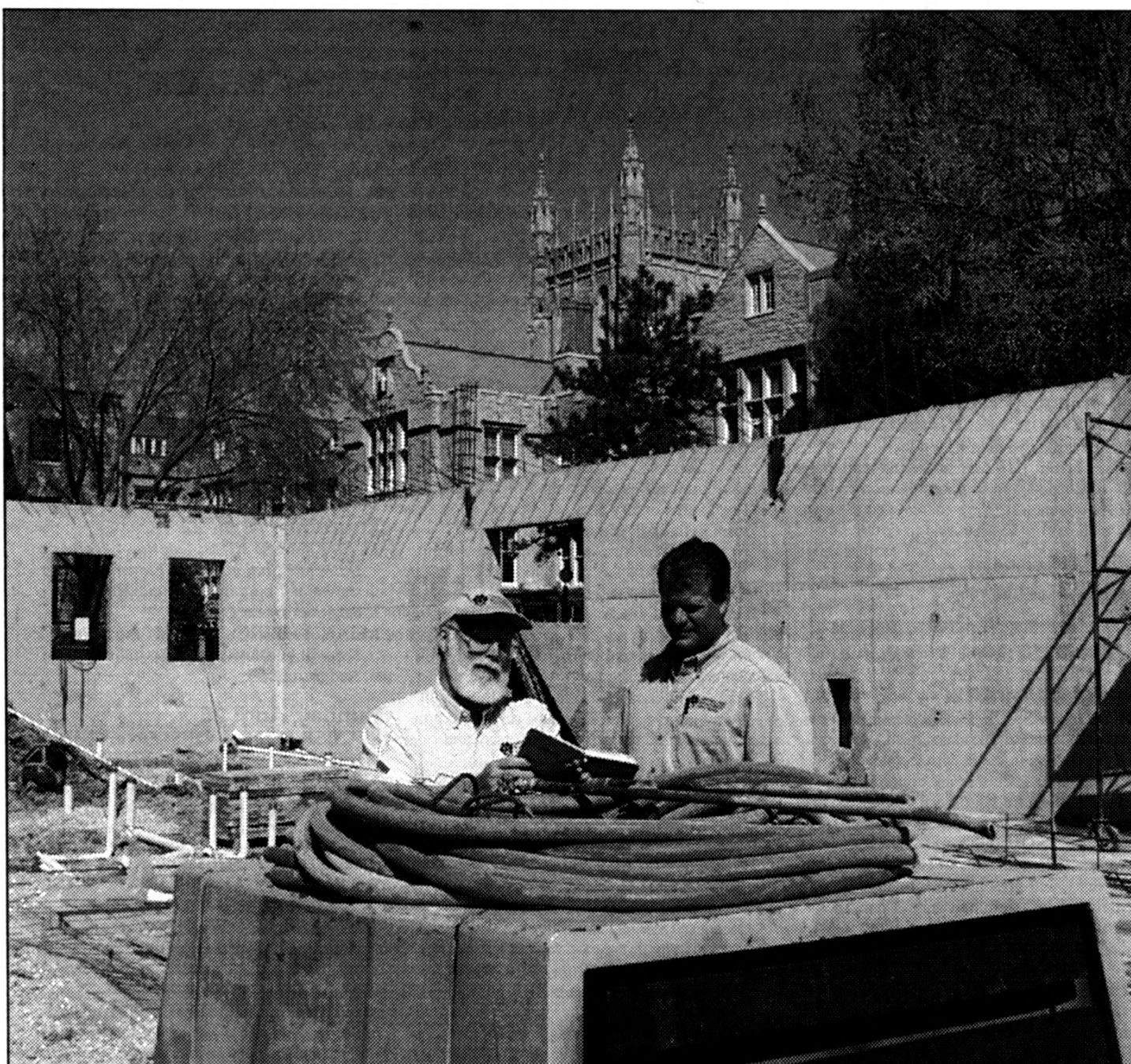
National & International Presentations

Patricia Crown, professor of art history and archaeology, presented "Sporting With Clothes: John Collet's Prints in the 1770s" at the College Art Association annual meeting in Los Angeles in February. Crown also presented "Hogarth's Pictures of Women Workers in the Luxury Trades" at Columbia University in November.
John Klein, associate professor of art history and archaeology, presented "Portraiture and Society in the Work of Beckmann and Matisse" at an international symposium for the exhibition "Max Beckmann and Paris" at the St. Louis Art Museum in February.
Several members of the Advanced Technology Center gave a presentation on their "Virtual Harlem" project at The City in Hypermedia and Virtual Reality conference in March at the University of Paris IV-Sorbonne. They are: **Bill Plummer**, director; **Bryan Carter**, research assistant; **Blake Lewis**, programmer/analyst; **Jacquie Sweet**, senior animator/graphic designer.
Kevin Price and **Mike Wardin**, staff members with the Adaptive Computing Technology Center, gave presentations at the Technology and Persons With Disabilities annual conference in March California State University. Price, an adaptive computing specialist, presented "Recommending the Optimal Speech Recognition Solution." Wardin, a training

specialist, presented "Adaptive Technology: Evaluation and Training."

Publications & Creative Activity

A book of poems by **Walter Barga**, senior coordinator for the Assessment Resource Center, was published by Timberline Press in March. The book is titled *Water Breathing Air*, and is the completion of a trilogy whose preceding titles are *Yet Other Waters* and *The Vertical River*.
William Berry, professor and chair of art, had several drawings accepted in national juried competitions, including "REpresentation" at Boise (Idaho) State University Art Center; the "Works on Paper Show" in Valdosta, Ga.; and the "Cambridge Art Association National Prize Show" in Boston.
Brooke Cameron, professor of art, had her print *Blake Portfolio: Homage to Nortimer* selected for the exhibition "Multiple Perspective" at the University of Rio Grande, Ohio.
Deborah Huelsbergen, assistant professor of art, had two calligraphic paintings in acrylic and gouache, *he cried to see the first snow* and *practice your letters* accepted to the exhibit "Textured Images: Woven, Written, Forged" at the St. Louis (Mo.) Artist Guild. A mixed media map titled *are we there yet?* was in the 1999 Kreft National Juried Exhibition in Ann Arbor, Mich.
Sharon Welch, associate professor of religious studies, is the author of *Sweet Dreams in America*, published recently by Routledge. The book, Welch's third, is subtitled "Making Ethics and Spirituality work"



Ken Frye, left, and Tom Wieck, construction project managers for Campus Facilities' Planning, Design and Construction, examined plans for the White Campus greenhouse under construction north of Tucker Hall. The greenhouse, scheduled for completion later this fall, is one of many projects that will be under way on campus this summer.

Campus Facilities photo

On the east end of Brady, a two-story office and merchandise storage annex will be built. Parking to the east of the building, however, will be unaffected. Construction activity, which will involve a crane, will be contained within the present loading dock area. Construction will begin in early May and end in late fall.

Other roofing projects across campus will be occurring at Clark Hall (lower roof), Fine Arts Building (north wing and gallery), Neff Hall and tower, and the middle section of Gentry Hall.

South Campus. Further south, activity in the University Hospital and Clinics area will involve the replacement of storm sewers along Monk Drive north to Hospital Drive, and the replacement of an east-west sanitary sewer along Hospital Drive from Hitt Street to Maryland Avenue, followed by reconstruction of the roadway. This project is scheduled to begin June 15 and last through September.

Various parking areas throughout campus — sixteen in all — are to be resurfaced, reconfigured or repaired this summer. High profile projects include rebuilding the service drive and parking areas north and northeast of Parker Hall, and resurfacing the parking area between Noyes Hall and the Student Health Center.

The University Village parking lot also will be expanded; a 31-space lot installed at Carrie Francke Drive near the softball field, and a 150-space, gravel-surfaced overflow parking lot for athletic activities installed between the Marx Building and the Dalton Cardiovascular Research Center. Parking lot projects will begin May 15 and conclude near the end of August.

In addition to this new summer construction, work continues on the Critical Care Addition to the hospital; Eckles Hall; the White Campus Greenhouse; and the renovation of Townsend Hall.

Building a Better Mizzou continues

Francis Quadrangle and the Memorial Union area this summer will be free of orange, plastic construction fencing, but there'll be activity enough elsewhere to remind summer scholars and staff that "Building a Better Mizzou" by Campus Facilities continues.

In addition to construction work already under way, numerous new projects, many of which will begin next month, this summer will affect pedestrian and vehicular traffic on campus.

North Campus. On the red campus north, Switzler and McAlester Halls will be connected by chilled water piping to the Geology Building. An electrical ductbank will also be installed between the Geology Building and McAlester, and improvements will be made to the existing storm-and-sanitary-sewer drainage system north of McAlester. This construction will initially close the Sixth and Elm streets intersection in all directions and, throughout construction, leave Sixth Street closed from McAlester Hall north to Elm Street. The service drive off Sixth Street that runs along the north side of McAlester Hall will be closed, along with the parking lot for the Geology Building. The sidewalk between Geological Sciences and Switzler will also be closed to pedestrian traffic. This construction, scheduled to begin after commencement, will be completed around mid-August. Still on the north side of campus, a

retaining wall and sidewalk will be replaced on Hitt Street across from the Hitt Street Parking Structure. Two electrical ductbanks will also be installed and telephone poles will be removed on the east side of Hitt from University Avenue to just north of the Manor House apartments. The project begins May 1 and is scheduled for completion in early August.

Mid-Campus. The most centrally located construction will be in the area between Jesse and Tate halls, where a chilled water loop will be extended from Jesse to Tate and then across Ninth Street to the southwest corner of Ellis Library between the Arts and Science Building. Two chilled water pipelines will be run beneath the street to complete the loop extension. The area between Jesse and Tate Halls will be closed to pedestrian traffic. The area west of Ellis Library and north of the Arts and Science Building, including Ninth Street, will remain open to pedestrian and vehicular traffic. The sidewalk between A&S's Allen Auditorium and the southwest corner of Ellis, however, will be closed. This construction, which begins in May, is scheduled for completion in early August.

Nearby Hulston Hall's courtyard, which faces the Arts and Sciences Building to the southeast, will be rebuilt. Construction here will be contained in the courtyard area, with minimal interference

with pedestrian traffic. This construction is scheduled to begin around mid-May and be completed by the end of June.

Across the way, a cooling tower will be removed from the roof of Brady Commons and the west, 1963 portion of the building reroofed. This activity will restrict, but not close off, foot traffic between Brady and the Arts and Science Building. A crane that will be used on weekends on Rollins Street will restrict this roadway to a single lane. Construction is scheduled to begin mid-May and end mid-August.

THE FOURTEENTH ANNUAL PETER TAMONY MEMORIAL LECTURE ON AMERICAN LANGUAGE

The Western Historical Manuscript Collection
cordially invites you to attend a lecture on

"THE AMERICAN ENGLISH OF REAL AMERICANS"

by Dennis R. Preston
Department of Linguistics and Languages, Michigan State University

Friday, April 23, 1999, 3:45 p.m., Ellis Library Auditorium
reception following in the Western Historical Manuscript Collection
23 Ellis Library, 573/882-6028

CALENDAR

Send calendar items by Campus Mail to
Mizzou Weekly Calendar, 407 Reynolds Center,
by noon Thursday the week before publication.
Events are free and open to the public unless otherwise noted.

Concerts and Plays

Thursday, April 22

THEATER SERIES: *Macbeth* will be performed at 8 p.m. tonight and April 23 and 24, and at 2 p.m. April 25 in the Rhynsburger Theatre. For ticket information, call 882-PLAY.

Friday, April 23

ASIAN-AMERICAN WEEK

PERFORMANCE: Performance artist Nobuko Miyamoto will blend monologue, song, dance and video imagery in her autobiographical presentation, "A Grain of Sand," at 8 p.m. in the Missouri Theatre, 203 S. Ninth St.

Saturday, April 24

UNIVERSITY CONCERT SERIES: The University Choral Union and University Philharmonic will perform works by Beethoven, Brahms and Bernstein in a concert titled "In Memoriam: Robert Shaw" at 8 p.m. in Jesse Auditorium. The concert will be conducted by Ann Jones, Shaw's protege and assistant at the Atlanta Syphony and currently director of choral activities at Boston University. Shaw, America's greatest choral conductor, selected the program and was scheduled to conduct the concert before his death in January. Cost: \$15. For ticket information, call 882-3781.

Sunday, April 25

JAZZ SERIES: Vocalist Nnenna Freelon and her trio will perform at 3 and 6 p.m. at Murry's, 3107 Green Meadows Way. For ticket information, call the MSA Box Office at 882-4640.

Monday, April 26

HEARNES CENTER CONCERT: Mizzou alumna and Grammy winner Sheryl Crow, with special guest Semisonic, will perform

at 7:30 p.m. at the Hearnes Center. For ticket information, call 1-800-CAT-PAWS or visit the Hearnes Center box office.

Tuesday, April 27

MISSOURI PLAYWRIGHTS WORKSHOP

WORKSHOP: *Wasted* and *The Contest*, two new plays by workshop members, will be read from 7-10 p.m. at the International Student Lounge in Memorial Union North. Audience members are encouraged to serve as readers for the plays and to critique the scripts. For more information, contact David Crespy at 882-0535 or e-mail: crespdy@missouri.edu

Courses

Thursday, April 22

TAI CHI CLASSES: Tai Chi classes will be held at 8 a.m. on Tuesdays and 11:45 a.m. on Thursdays in the Health Connection, Parkade Plaza. Classes are ongoing and more suitable for beginners. To register, call 882-1718.

HUMAN RESOURCES SEMINAR: Sandy Neal, assistant director of Human Resource Services, will present "Performance Management" from 8:30 a.m.-4 p.m. in S204 Memorial Union. Registration required, call 882-2603.

Saturday, April 24

YOGA CLASSES: Yoga classes will be held at 11:15 a.m. on Tuesdays and 10 a.m. on Saturdays in the Health Connection, Parkade Plaza. Classes are ongoing and accommodate the beginning to advanced yoga exerciser. To register, call 882-1718.

Tuesday, April 27

HAZARDOUS AWARENESS COURSE: "Hazardous Materials Awareness Session" will be offered from 10 a.m.-noon in Room 12 Research Park Building. The course also

will also be held June 30. Registration is required, call 882-7018.

Exhibits

MUSEUM OF ANTHROPOLOGY: The museum's exhibits focus on Native American cultures and the history and prehistory of Missouri. The museum, located at 100 Swallow Hall, is open 9 a.m.-4 p.m. Monday-Friday.

MUSEUM OF ART AND ARCHAEOLOGY:

Special Exhibits:

- "Icons of Pop" is on display through June 27
- "Finds from Jewish Ossuary Tombs" is on display through Sept. 12
- "Image and Imagination in African Art" is on display through December
- "Jaguar's Realm: Ancient Art from Mexico to Peru" is on display through December
- "Los Caprichos" is on display through Dec. 5
- "Twentieth-Century Sets and Series" is on display through May 9
- "Wrapped Creatures: Animal Mummies from Egypt" is on display through Aug. 29

Ongoing Exhibits:

- "The Saul and Gladys Weinberg Gallery of Ancient Art"
 - "Early Christian and Byzantine Gallery"
 - "Gallery of European and American Art"
- The museum, located in Pickard Hall, is open from 9 a.m.-5 p.m. Tuesday-Friday, 6-9 p.m. Thursday and noon-5 p.m. Saturday and Sunday.

STATE HISTORICAL SOCIETY:

- "Masterworks of Thomas Hart Benton: A Salute Continued," is on display in the gallery from 8:30 a.m.-4 p.m. Monday to Friday through May 28.
- "Pacific Railroad Surveys" is on display in the north-south corridor through Dec. 31.
- "Decades: 1899 to 1969, Editorial Cartoons" is on display in the east-west corridor. The corridors are open from 8 a.m.-4:30 p.m. Monday-Friday and 9 a.m.-4:30 p.m. Saturday.

UNIVERSITY ARCHIVES: Several exhibits of historic photographs are available through the archives' web site:

- "Meet Me At the Union," the construction, dedication and growth of Memorial Union
- "Getting Physical," early photos of MU women's athletics
- "Mizzourah!" the early years of MU football
- "Cows on the Lawn," the early days of dairy science at Mizzou
- "Mizzou From the Air: 1919"

- "Come On Home Tigers," early MU homecomings
 - "Dramatic Images," photos of MU theatrical productions from the 1920s to the 1940s
 - "Significant Dates in the History of MU"
 - "Mizzou History Trivia Quiz"
- The archives' web site is at : <http://www.system.missouri.edu/archives>

BINGHAM GALLERY: An exhibition of works by the graduating master of fine arts candidates is on display through May 8. The gallery, located in A125 Fine Arts, is open from 10 a.m.-4 p.m. Monday-Friday.

BRADY COMMONS GALLERY: "The MU Clay Klub (MUCK) Juried Exhibition" is on display through April 22. The gallery, located in 203 Brady Commons, is open 10 a.m.-5 p.m. Monday to Friday, 10 a.m.-3:30 p.m. Saturday, and 1 p.m.-6:30 p.m. Sunday.

Films

Thursday, April 22

JAZZ FILM SERIES: *Sun Ra: A Joyful Noise* and *Stations of the Elevated* will be shown at 7 p.m. in the Daniel Boone Regional Library.

ASIAN-AMERICAN FILM: *Eat A Bowl of Tea* will be shown at 7:30 p.m. in Ellis Auditorium.

Sunday, April 25

SPANISH FILM SERIES: *Fresa Y Chocolate* will be shown 5:30 p.m. in Ellis Auditorium.

Lectures

Thursday, April 22

INTERNATIONAL AFFAIRS SEMINAR: Valerie Heitshusen and Garry Young, associate professors of political science, will present "New Zealand Politics in Transition" at noon in S16 Memorial Union. A brown-bag lunch will begin at 11:40 a.m.

MICROBIOLOGY SEMINAR: Angela Zarling, a doctoral candidate in molecular microbiology and immunology, will present "Presentation To and Priming of Human CD8+ T Lymphocytes" at 1 p.m. in S255 School of Nursing.

INSTRUCTIONAL TECHNOLOGY SEMINAR: Geoff Swindells, government documents librarian, and Nancy Turner Myers, social sciences librarian, will present "Public Policy Resources For Teaching and Research" from 2-4 p.m. in 305 Hill Hall. To register, call 882-0645.

CHORAL UNION PANEL: "Remembering Robert Shaw," a panel discussion on the work of American's greatest choral conductor, will be held from 3-4 p.m. in Whitmore Recital Hall.

CHEMICAL ENGINEERING LECTURE: Stan Bull, deputy director of the National Renewable Energy Laboratory, will present "Renewable Energy: Ready to Meet Its Promise?" at 3:30 p.m. in Ketcham Auditorium in Engineering Building East.

ENGLISH LECTURE: Margaret Drabble, novelist and editor of *Oxford Companion to English Literature*, will present "The Literary Landscape: From the Sublime to the Ridiculous" at 4 p.m. in 106 Pickard Hall. A reception will begin at 3 p.m. in the Cast Gallery, Pickard Hall. A question-and-answer forum with Drabble will be held on April 23 from 10 a.m.-12:30 p.m. in the University Bookstore.

FREE-PRESS STUDIES LECTURE: Stuart Loory, Lee Hills Chair in Free-Press Studies, will present "Can the Media Sell Themselves and the Truth Too?" at 5 p.m. in 110 Lee Hills Hall.

Friday, April 23

MICROBIOLOGY SEMINAR: Karin Peterson from Rocky Mountain National Labs will present "Differential Cytokine Responses in Susceptible and Resistant Strains of Mice Infected with Friend Virus" at 1 p.m. in M615 Medical Sciences Building.

FORESTRY SEMINAR: Erik Streed, director

OVER 75 BOOTHS of INFORMATION & IDEAS...

Mark your calendars!

EXPO '99

ADMINISTRATIVE SERVICES

**Staff Advisory Council's
Annual Fashion Show 12:00-1:00
Displays, Information, Give-Aways,
Treats, Door Prizes from...**

Campus Facilities, NBC 8, Human Resources, S.O.S., Show Me State Games, Information and Access Technology Services, Minority Business, University Club, University Catering, Printing Services, Hearnes Center, Telecom, Procurement/Materials Management, General Stores, Cashiers, Payroll, Student Loans, Campus and Bulk Mail, Environmental Health and Safety, Gustin Golf Course, Campus Copy Centers, Parking and Transportation, Accounting Services and many more...

...on how to better use the University's services

9am to 3pm

APRIL 28

FREE PARKING at HEARNES CENTER

for the Center for Integrated Natural Resource and Agricultural Management at the University of Minnesota, will present "The Economic Implications of Agroforestry" at 3 p.m. in 210 Natural Resources Building.

PHILOSOPHY LECTURE: Cristina Bicchieri, professor of philosophy at Carnegie Mellon University, will present "Social Learning and the Dynamics of Norms" at 3 p.m. in 109 GCB.

ECONOMICS SEMINAR: Dan Black from the University of Kentucky at Lexington will present "Is the Threat of Training More Effective than Training Itself? Experimental Evidence from UI Claimant Profiling" from 3:30-5:30 p.m. in Middlebush Auditorium.

NUTRITIONAL SCIENCES SEMINAR: Colin White from the division of animal production, CSIRO, Western Australia will present "Zinc Deficiency in the Sheep: Effects on Reproduction and Cellular Immunity" at 3:30 p.m. in 209 Gwynn Hall.

AMERICAN LANGUAGE LECTURE: Dennis Preston from the Department of Linguistics and Languages at Michigan State University will present the Peter Tamony Memorial Lecture "The American English of Real Americans" at 3:45 p.m. in Ellis Auditorium.

CHEMISTRY COLLOQUIUM: Robert Hanzlik from the University of Kansas will present "Cysteine Proteinases and Their Inhibition: A Cure for the Common Cold?" at 4 p.m. in 114 Physics.

Monday, April 26

PHARMACOLOGY LECTURE: Ji-Hee Seok, a graduate student of pharmacology, will present "Regulation of Anion Transport in Mouse and Human Intestine by Guanylin Peptides" at 11 a.m. in M558 Medical Sciences Building.

BIOCHEMISTRY SEMINAR: Karen Bennett, associate professor of molecular microbiology and immunology, will present "Multiple GLHs, Putative RNA Helicases, Are Components of the Germline P Granules of C. Elegans" at 3:40 p.m. in M328 Medical Sciences Building.

SOIL AND WATER RESOURCES

SEMINAR: Steve Schmitt, a master's student in forestry, will present "Application of Remote Sensing and a Flow Source Mixing Model to the Hydrology and Water Quality of Small Watersheds in Northern Missouri" at 4 p.m. in 123 Natural Resources Building.

ECONOMICS LECTURE: Alfred Kahn, professor emeritus at Cornell University, will present the Harry Gunnison Brown

Memorial Lecture in Economics titled "The Continuing Deregulation Revolution" at 8 p.m. in 7 Hulston Hall.

Wednesday, April 28

MIDDAY GALLERY EVENT: Dana Everts-Boehm, director of the folk arts program, will present "The Commodification of a Mesoamerican Folk Art: Masks in Twentieth Century Sets and Series" at 12:15 p.m. in the Museum of Art and Archeology.

CONSERVATION BIOLOGY LECTURE: John Seidensticker, curator of mammals at the National Zoological Park of the Smithsonian Institution, will present "Saving the Tiger" at 7 p.m. in the Natural Resources Building auditorium.

Thursday, April 29

INTERNATIONAL AFFAIRS SEMINAR: Robin Remington, professor of political science, will present "Bombing for Peace: Preventive Diplomacy?" at noon in S16 Memorial Union. A brown-bag lunch will be at 11:40 a.m.

PHARMACOLOGY SEMINAR: Richard Roth from the department of pharmacology at Stanford University School of Medicine will present "Insulin Action and Inaction" at 4 p.m. in M437 Medical Sciences Building.

Friday, April 30

ECONOMICS SEMINAR: Van Pham, assistant professor of economics, will present "Female Labor, Technological Progress and Emulative Development" from 3-5 p.m. in 211 Middlebush Hall.

FORESTRY SEMINAR: Dusty Walter, a natural resources graduate student, will present "Woody Biomass Production Agroforestry in the Missouri River Floodplain" at 3 p.m. in 210 Natural Resources Building.

GEOGRAPHY SEMINAR: Joanne Banks-Wallace, assistant professor of nursing, will present "Storytelling as a Qualitative Research Technique" from 4-5 p.m. in 100 Stewart Hall.

Meetings

Thursday, April 29

FACULTY COUNCIL: The council will meet at 3:30 p.m. in S203 Memorial Union. They will also meet on June 10, and July 29.

Special Events

Sunday, April 25

POPART FOR KIDS: The Museum of Art and Archaeology will present "Chicken Noodle Soup: A Pop Art Lesson on Warhol," from 1:30-3:30 p.m. in Pickard Hall. This event will discuss Andy Warhol's work, and is open to children ages 10-12. For cost and registration information, call 882-3591.

Thursday, April 22

HORT CLUB PLANT SALE: The MU Horticulture Club will hold its annual bedding plant sale from 9 a.m.-6 p.m. today and tomorrow in Room 52 Agriculture Building. Use the entrance across from Tucker Hall and follow the signs.

UM HEALTH PLAN FORUM: Members of the University community are invited to attend an open forum on the UM System health insurance plan from 3:30-5 p.m. in Fisher Auditorium in Gannett Hall. Mike Paden, director of UM Faculty and Staff Benefits, will discuss trends in the cost of the University's health plan; Lisa Wimmenauer, MU's representative to the UM System faculty and staff benefits committee, will discuss options under consideration; and Andrew Twaddle, co-chair of the MU health plan oversight committee, will discuss the values and trade-offs inherent in changes to the plan.

Friday, April 23

BLACK AND GOLD DAY: This recruitment event for prospective students and parents will be from 8 a.m.-2 p.m. in the Reynolds Alumni Center.

Saturday, April 24

MU DAY OF CARING: Faculty and staff are invited to join hundreds of MU student volunteers in the United Way Day of Caring. Volunteers will meet at 8 a.m. in Middlebush Hall for a continental breakfast and to receive work assignments at area service agencies that will last until 3 p.m. With questions, call Yolanda Donaldson at

817-1129.

Tuesday, April 27

GRADUATE STUDENT AWARDS: This ceremony to recognize excellence in academics, teaching and research by MU graduate students will be held at 6:30 p.m. in Jesse Auditorium. Kala Stroup, Missouri commissioner of higher education, will be the keynote speaker.

Wednesday, April 28

EXPO '99: Expo '99, featuring over 75 booths of information and ideas on how to better use the University's services, will be held from 9 a.m.-3 p.m. The Staff Advisory Council's Annual Fashion Show will be held from noon-1 p.m. Both will be held in the Hearnes Center.

Friday, April 30

NURSING BANQUET: The Sinclair School of Nursing will host a banquet to recognize nursing alumni, students, faculty and staff for achievement excellence at 7 p.m. in the Reynolds Alumni Center. Social hour begins at 6 p.m. To register, call 882-0252.

FOR THE RECORD

Fellowships to other Big 12 institutions allow MU faculty the opportunity to travel to member institutions to exchange ideas and research. The program was instituted by chief academic officers of Big 12 Conference institutions, and a faculty member at any member institution may visit any other institution. Ordinarily the visits are for two weeks, but longer visits are possible.

Applications are available from the vice provost for minority affairs and faculty development at 116 Jesse Hall.

Parking & Transportation Services

Turner Avenue Garage
Level 2
882-4568

Faculty & Staff, Expo' 99, Administrative Services

Over 75 booths of Information & Ideas

Staff Advisory Council's Annual Fashion Show noon to 1 p.m.

Displays, Information, Give-Aways, Treats, Door Prizes from...

Business Services, Campus Facilities, NBC8, Human Resources, S.O.S., Show Me State Games, Information and Access Technology Services, Mizzou Telecom, Minority Business, University Club, University Catering, Printing Services, Hearnes Center, Procurement/Materials Management, General Stores, Cashiers, Payroll, Student Loans, Campus and Bulk Mail, Environmental Health and Safety, Gustin Golf Course, Campus Copy Centers, Parking and Transportation, Accounting Services, University Police Department and many more...on how to better use the University's services

Mark your calendars! April 28, 9 a.m. to 3 p.m.

Free Parking at Hearnes.



THE PERFECT COUPLE. NOW JUST \$1.99.

Right now, America's Favorite Burger, the WHOPPER®, and a medium order of the KING OF FRIES™ are only \$1.99. Hurry in, because although they're perfect together, this deal won't last a lifetime.



It just tastes better.



Located in Brady Commons

Mon-Thurs 7:30 a.m. - 10 p.m., Fri 7:30 a.m. - 6 p.m.,

Sat 9 a.m. - 4 p.m., Sun Noon - 10 p.m.

Offices adopt summer hours

Beginning Monday, May 10, the offices listed here will move to summer hours. Regular hours will resume Monday, Aug. 16. Regular summer hours are from 7:30 a.m. to 4 p.m., with 30 minutes for lunch. Some of the offices observing summer hours will maintain telephone coverage until 5 p.m. All offices that are not listed here will retain the regular work schedule of 8 a.m. to 5 p.m. with an hour for lunch.

7 a.m.-4:30 p.m.
Department of Economics

7 a.m.-5 p.m.
Nursing Outreach and Distance Education

7:30 a.m.-4 p.m.
**Academic Support Center
Accounting Services**

College of Agriculture, Food and Natural Resources
Agricultural Economics
Agricultural Education
Agronomy
Community Development
Forestry
Rural Sociology

College of Arts and Science
Advisement Center

Art
Art History and Archaeology
Arts and Science Dean's Office
Anthropology
Biological Sciences
English
Geological Sciences
Mathematics
Physics and Astronomy
Political Science
Psychology
Religious Studies
Sociology
Statistics

College of Business and Public Administration
Accountancy
Career Services
Finance
Fiscal Office
Graduate Studies
Management
Marketing
Missouri Training Institute
Public Administration
Undergraduate Programs Office
Undergraduate Dean's Office
Research Center

Dalton Cardiovascular Research Center
Disability Services
Environmental Health and Safety

School of Health Related Professions
Student Affairs Office
Cardiopulmonary and Diagnostic Sciences
Communication Science and Disorders
Occupational Therapy
Physical Therapy
Hearnes Center
The Honors College
College of Human Environmental Sciences
Human Environmental Sciences
Dean's Office
Environmental Design
Human Development and Family Studies
Office of Research and Graduate Studies
School of Social Work
Textile and Apparel Management
Human Resource Services
The Learning Center
Military Science
MU Extension
Vice Provost's Office
Distance Learning Design Center
Extension Technology and Computer Services
4-H/Youth Development Program
Small Business Development Center
MU Conference Office
Consumer and Family Economics

Extension
Environmental Design Extension
Human Development and Family Studies Extension
Textile and Apparel Management Extension
Procurement/Materials Management
General Stores
Inventory Control
Purchasing
Surplus Property
Program for Excellence in Teaching Residential Life — Academic Programs

7:30 a.m.-4:30 p.m.
German and Russian Studies
Veterinary Biomedical Sciences

7:30 a.m.-5 p.m.
Campus Writing Program
Intercollegiate Athletics
Office of the Provost
Residential Life
Administration
Facility Operations
Sponsored Program Administration
Student Financial Aid

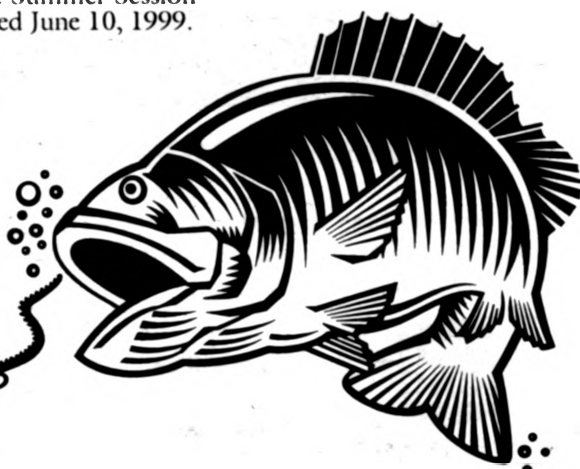
8 a.m.-4:30 p.m.
Department of Geography
Nursing Student Services



DROP US A LINE!

Place your department's events in the Mizzou Weekly Semester Calendar by sending in this form.

You can also submit your item through the new MU Online Events Calendar at: <http://www.missouri.edu/calendar>. Use the form to the right for sending entries directly to Mizzou Weekly. The Summer Session Calendar will be published June 10, 1999. **Deadline for entries: noon May 24, 1999.**



Send to MW Semester Calendar, 407 Reynolds Center, by noon May 24 for the Mizzou Weekly Summer Session Calendar, June 10.

Event date _____

Event title _____

Speaker or performer _____

(including professional title, university or company affiliation)

Time _____

Location _____

Ticket or cost information _____

Event sponsor _____

Who may attend _____

Submitted by _____

Phone number _____

Using the ol' bean

MU researcher is honored for combating soybean pest.

Anand, a newly released soybean variety that is high yielding and resistant to the soybean cyst nematode, is named for the Mizzou scientist who developed it. Sam Anand and his colleagues at MU Delta Research Center in Portageville, Mo., crossed two varieties — Hartwig and Holladay — to come up with Anand.

Holladay, a high-yielding cultivar, is susceptible to soybean cyst nematode, a tiny, subterranean worm that attacks the roots of soybean plants. SCN costs farmers hundreds of millions of dollars annually in lost yields.

Hartwig, which was also developed by Anand, was released in 1991 and is the first soybean variety resistant to all races of SCN. The Anand variety is resistant to several races of the soybean nematode. When it was tested in Missouri fields, it significantly outyielded other soybean varieties in nematode-infested fields.

Anand - the scientist, not the bean - said he was pleased at the variety test results. In the National Uniform variety tests involving 10 other states, Anand was the highest yielding variety among 24 lines at 10 locations in 1996; and also was tops among 26 lines at 22 locations the following year.

"When you have varieties coming in from all over the country, and this yields the best, that says a lot," Anand said.

Delta Center supervisor Jake Fisher and the center advisory commission decided to name the new variety for Anand because of his many contributions to soybean breeding at the research station. Sam Anand developed and released 12 soybean varieties from 1983 to 1999. He retired from his post in Portageville and moved to the MU campus in Columbia, where he still works

part time.

It is only fitting that his most recent variety should bear his name. "It doesn't give you any dollar amount," he said, "but it's satisfying to know your work is appreciated."

Farmers across the country appreciate Anand's work, even if they don't know his name. Much of his career has been dedicated to combating the soybean cyst nematode, which he calls "the worst soybean pest in the United States."

At Delta Center, Anand and his team worked to develop SCN-resistant lines suitable for the soils and climate of Missouri. Many of his varieties are used in the development of other specialized soybean lines.

"They serve as a germplasm for developing more varieties all around the world," he said. "If we look into the pedigrees of other varieties, several of our varieties have contributed to the development of more than 100 other different varieties. It's had a lot of indirect impact."

A native of Delhi, India, Anand came to the United States to study plant breeding at North Carolina State University and the University of Wisconsin. His work has brought him many honors, including recognition as "Man of the Year in Agriculture" by Progressive Farmer in 1991 and the Research Award from the American Soybean Association and the United Soybean Board in 1993.

The Anand soybean has also been released in Arkansas, Kansas, Kentucky, North Carolina and Tennessee because of its superior performance in those states. It is adapted to the mid-South and Southern areas of the United States. Anand seed will be released by University of Missouri Agricultural Experiment Stations, and the Missouri Seed Improvement Association in Columbia will handle the distribution.

extent of global warming effects on the ice sheet.

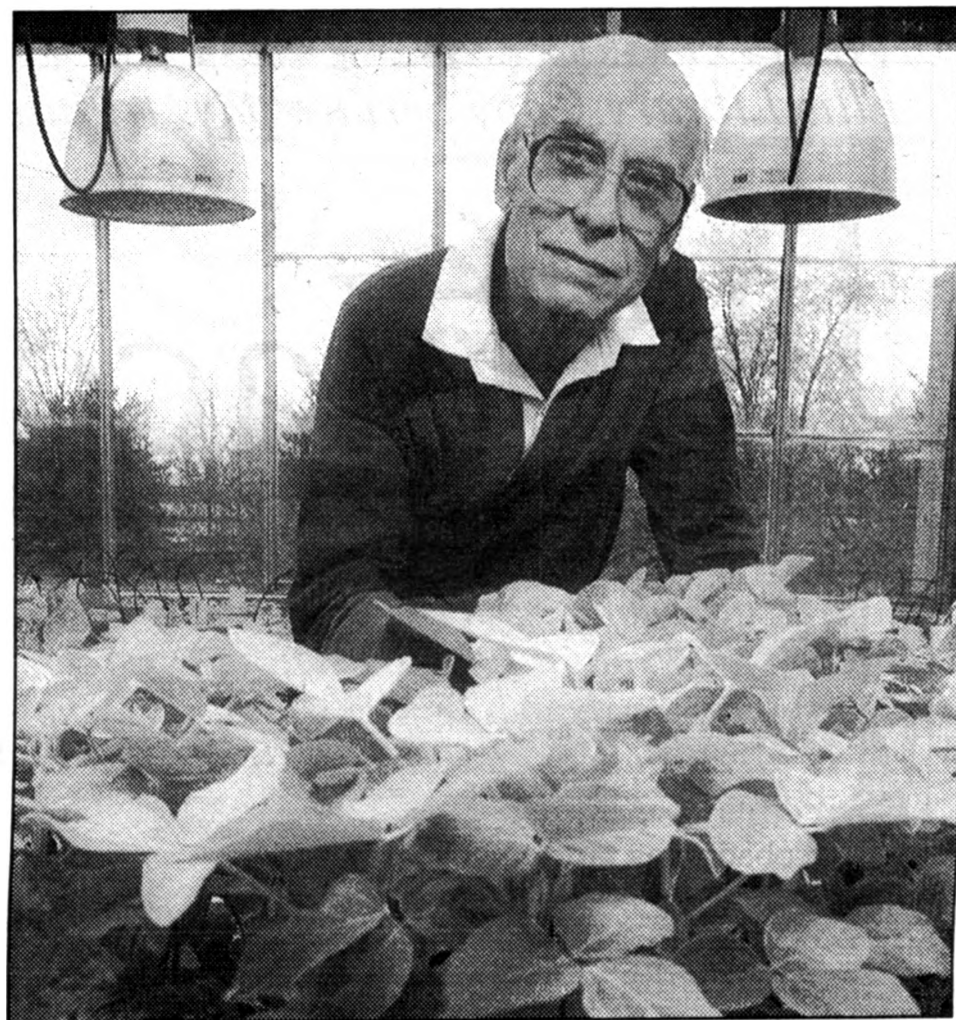
Steve Easton, associate professor of law, was featured in a March issue of *USA Today* in a piece titled "Can Jurors Trust Trial Attorneys?"

David Geary, professor of psychology, was mentioned in the March 11 article in the Oswego, N.Y., *Palladium-Times* about an upcoming talk he will give on his new book, *The Evolution of Human Sex Differences*.

Glenn Good, associate professor of educational and counseling psychology, was quoted several times as an expert on male psychology in the following national publications: the Feb. 17 issue of *The New York Times*, the January issue of *Mademoiselle*, the February issue of *New Woman* and the February/March issue of *Bride's*.

Peter Mueser, associate professor of economics, was interviewed by radio station KCMS in Northridge, Calif., for his study on the rate of success of the welfare-to-work movement in the United States.

Robert Weems Jr., associate professor of history, had his research on African-American consumerism featured in a Feb. 26 article in the *Indianapolis Recorder* and in a March 4 article in the *Miami Times*.



Jim Curley photo

Sam Anand, an MU soybean breeder, has crossed two soybean varieties to come up with a new line that is high yielding and resistant to several races of the soybean cyst nematode. The new variety has been named "Anand" in his honor.

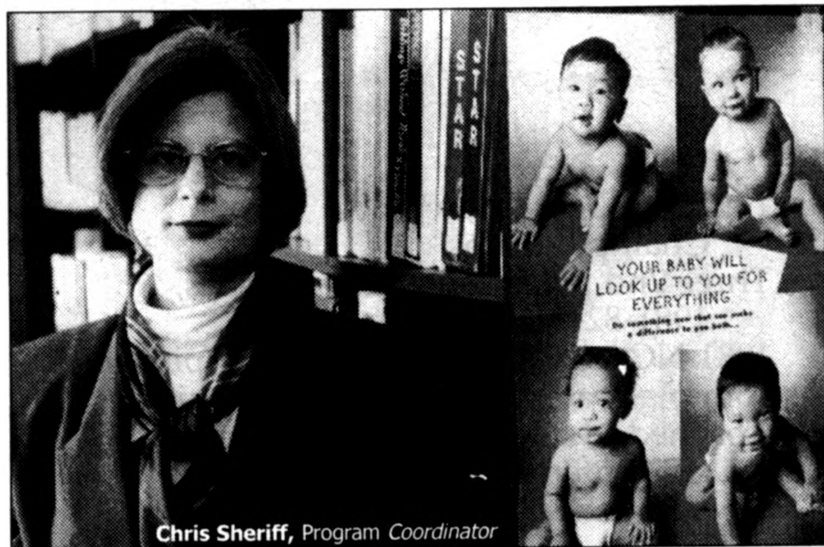
MIZZOU IN THE MEDIA

Comments by **C.B. Chastain**, professor of veterinary medicine and surgery and associate dean, about animals being good judges of character appeared in the March *USA Today* magazine.

Harris Cooper, professor of psychology, was quoted for his research on school homework in the following publications: the Feb. 7 edition of the *Bay City (Mich.) Times*, the Feb. 24 edition of the *Arizona Republic*, the March 4 *Lincoln County (Maine) Weekly, Parents Express*, the *San Francisco Examiner-Chronicle*, in the New Jersey *Sunday Star-Ledger*, the *New York Daily News*, the *Lake Elsinore Valley (Calif.) Sun-Tribune*, the *Detroit News*, the *South Georgia Sunday*, and in the *Inland Valley Daily Bulletin* in Ontario, Canada.

Curt Davis, associate professor in the MU's coordinated engineering program with UM-Kansas City, was quoted in the March 5 *Fort Worth Star-Telegram* for his work on measuring the Greenland ice sheet and determining the

M Extension



Chris Sheriff, Program Coordinator

Got kids? Need answers?

Whether toilet training a tot or dealing with a teenager's negative attitude toward homework, parents may face 18 years of challenge after challenge. While most issues work themselves out, sometimes families need guidance from an accessible, credible source.

That's where Chris Sheriff and ParentLink come in. Founded by MU Extension 10 years ago as part of the Missouri 4-H Youth Programs, ParentLink provides research-based information about child development,

special health needs, substance abuse prevention and behavioral problems.

Chris runs the program's Connection Center, with a loan library of 1400 books, tapes and printed materials, a statewide resource database and a professionally staffed toll-free number that draws 4,000 calls a year from families in every Missouri county.

Many parents worry that they are the only ones facing a particular problem. Chris and her staff lend assurance and advice to help them navigate those bumpy roads...

ParentLink

<http://outreach.missouri.edu/parentlink/>

The Power of Lifelong Learning

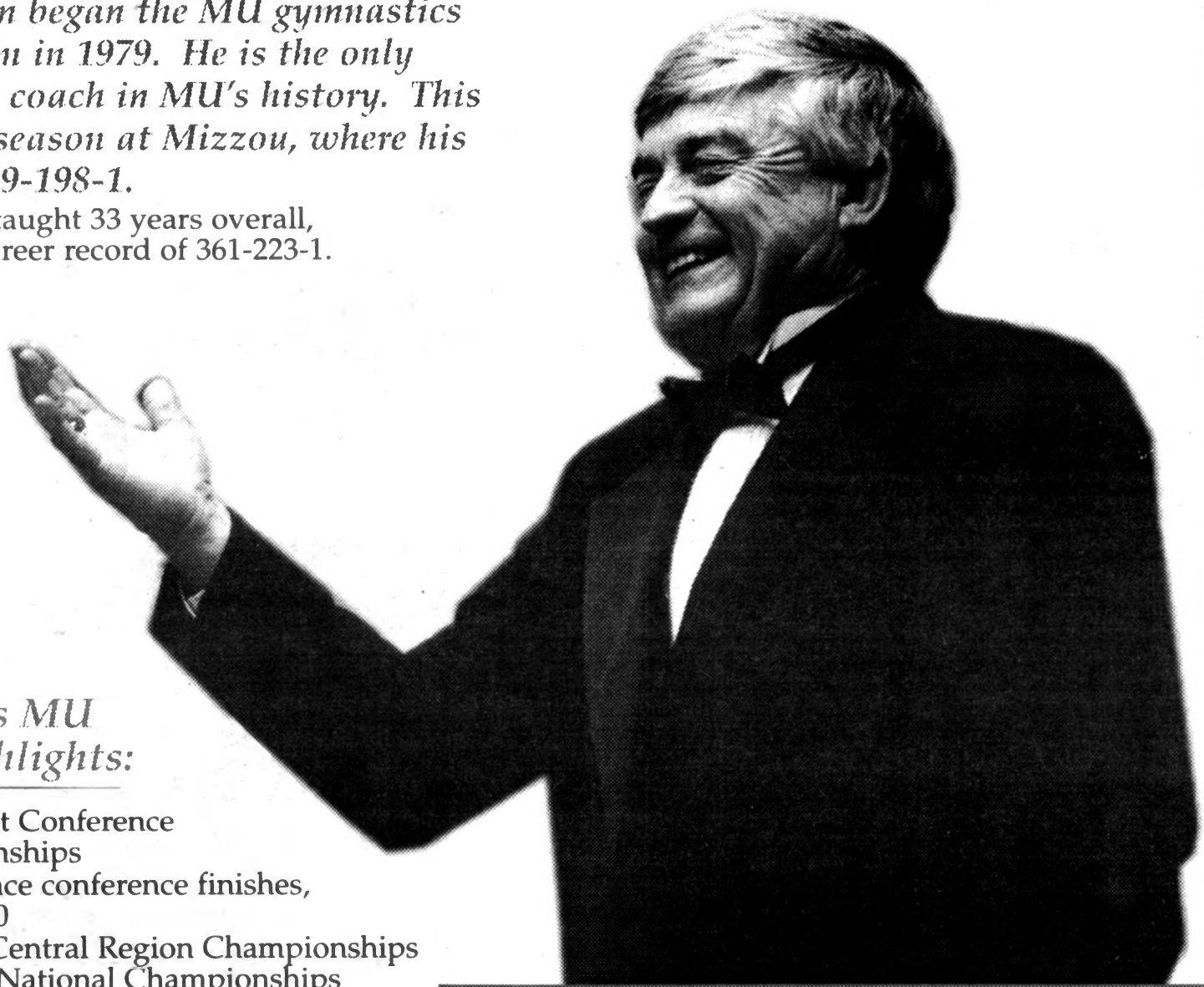
Ellis Library Copy Service pays tribute to:

Jake Jacobson

for his remarkable contribution to MU gymnastics

Jacobson began the MU gymnastics program in 1979. He is the only gymnastics coach in MU's history. This is his 20th season at Mizzou, where his record is 229-198-1.

Jacobson has taught 33 years overall, with a total career record of 361-223-1.



Jacobson's MU career highlights:

1992 Big Eight Conference Championships

Three 2nd place conference finishes, 1981-82-90

1981 NCAA Central Region Championships

16th place at National Championships

Coached 31 all-conference gymnasts, 15 conference champions and 5 regional champions

* Over the past twenty years, 99% of his gymnasts have graduated

75¢ Full-Color Copies
when you have five or more full-color copies made,

Ellis Library Copy Service
Your full-color copy center.

115 Ellis Library Columbia, MO 65201-5149

Ph. 882-7262 Fx. 884-5004

<http://copy-service.ps.missouri.edu>

Mon. thru Thurs. 7:30am to midnight Fri. 7:30am to 9pm

Sat. 9am to 9pm Sun. noon to midnight

This season's accomplishments:

Winner of the Cat Classic

Winner of the Corvette Cup championships

Set 26 school records

Jacobson was voted the Big 12 Conference Coach of the Year

Shannon Brown (beam) and Jessica Haag (vault) won Big 12 Championships

Brown, Haag and Amanda Peterson represented MU at the NCAA Region 3 Championships, April 10, in Lincoln, Nebraska

Warnock will head Sponsored Programs

MU's Office of Research has named Michael J. Warnock as the director of the Office of Sponsored Program Administration. Previously, Warnock was executive director of the Texas Research Institute for Environmental Studies and interim associate vice president for Research and Sponsored Programs at Sam Houston State University.

"Dr. Warnock is exceptionally well-qualified to be MU's new director of OSPA," said Jack Burns, vice provost for research. "He single-handedly created a contract and grants office at Sam Houston State University. As a Ph.D. and an accomplished researcher, Dr. Warnock has a deep understanding of the complexities and challenges in preparing great proposals and negotiating contracts. In addition, Dr. Warnock's warm personality will quickly endear him to our faculty."

As head of the Office of Sponsored Program Administration, Warnock directs the activities of the office in order to provide support services for faculty who attempt to win funding from external sources. The office offers assistance to faculty with proposal processing, management of external awards and maintaining the distribution of information on grants and contracts.

"I look forward to facilitating the research activities of the MU faculty and assisting them in meeting the challenges of developing new funding opportunities," Warnock said. "I am very interested in developing collaborations between faculty in different departments, campuses and even outside the University of Missouri system."

Warnock received a bachelor's degree in botany in 1977 and a master's degree in plant systematics in 1979 from the University of Illinois at Urbana-Champaign. In 1982, he earned a doctorate in plant systematics from the University of Texas-Austin. He has held positions at the University of Illinois at Urbana-Champaign, the University of Texas and Sam Houston State University.

He has more than 20 years of experience formulating and completing sponsored projects. He also has played an active role in more than 40 different research projects and has produced more than 125 publications. His research projects have involved detailed understanding and applications of plants, their physical and biological environments, geologic and atmospheric processes and toxic and hazardous materials usage and disposal. Warnock's recent focus has been on development of multidisciplinary collaborative projects to address environmental issues.

Currently, the Texas Research Institute for Environmental Studies is responsible for 28 projects, ranging from research in various environmental disciplines to applied projects in waste management and technology development and transfer.

Save a Tree. Save a Habitat.



Use A Computer - It's better than recycling!

6 WAYS TO SAVE A TREE USING A COMPUTER:

- 1) Use print preview - only print a final draft
- 2) Don't print it - archive it to tape, zip or disk
- 3) Use online syllabi and assignments
- 4) Send E-mail announcements not flyers
- 5) Subscribe to on-line magazines
- 6) Surf the web on the web - don't print it out

iat
services

Building B&PA's global potential

MU's business college wraps up campaign with \$1 million gift for global initiatives.

Jack and Mary Bush, longtime supporters of the College of Business and Public Administration, have increased their financial commitment to business education by donating \$1 million for international programs and initiatives.

The gift, announced April 9 at the annual B&PA Honors Luncheon, is the second major donation the Bushes have given to the college. In 1996, they announced the first leadership gift of \$1 million for B&PA's proposed new building. The Bushes' initial gift helped the college kick off its Excellence through Change capital campaign.

"Of course, as before, I feel very strongly about the potential of B&PA," Jack Bush said. "Mary and I made our first pledge with the thought that others

would follow. And they have. We believe that this gift will possibly stimulate some more gifts to the college."

The Bushes' most recent gift comes at the close of B&PA's successful campaign. About \$28 million has been raised to support the construction of the new B&PA building, scholarships for undergraduate and graduate students, endowed chairs and professorships, new academic programs and upgraded technology.

"Once again, Jack and Mary Bush have shared their success with the students and faculty of B&PA," said Bruce Walker, dean of business and public administration. "They began our fundraising efforts with a generous \$1 million gift and are helping us conclude this campaign with another significant gift

that will assist the College as we expand our international initiatives."

Both Bushes are MU graduates. Jack Bush earned a bachelor's degree in business administration in 1958, and Mary Birbeck Bush graduated with a bachelor's degree in music education in 1957.

Jack Bush retired as president of Michaels, the nation's largest arts and crafts retailer, in 1995. Today, he is president of a consulting firm, Raintree Partners Inc., which advises several large and start-up companies. He also serves as chairman and CEO of JumboSports, the nation's second largest sporting goods specialty retailers. He also serves on the boards of Stage Stores of Houston, and Telequip of Richardson, Texas.

In 1993, he returned to MU to

participate in B&PA's executive-in-residence program. In 1995, he received the College's Alumni Citation of Merit and in 1996, MU's Faculty/Alumni Award. The B&PA Student Council selected him as Alumnus of the Year in 1997. The Bushes are members of The Herbert J. Davenport Society and The Jefferson Club.

Mary Bush has had an accomplished career as a professional musician and piano instructor. She is a director of the Dallas Opera and a member of both the Dallas Symphony Orchestra League and Opera Guild. She also is director of The Mary Notes, a popular 40-woman choral group in Dallas. "We want these gifts to this business school to be inspirational to the students," Jack Bush said. "If they see that two poor country kids from King City, Mo., can be successful enough to make significant donations to the school, then they have the opportunity to be even more successful."

Home Loans

HOME LOAN RATES ARE LOW, LOW, LOW!

Use your home's equity to pay expenses or buy the house you want...NOW!

First Mortgage

- LOW fixed or variable rates
- Terms of 15 or 20 or 30 years
- 0% Points available

Home Equity Line of Credit

- LOW rates, based on Prime currently 7.75% - quoted daily
- NO teaser rates! -
- Borrow up to 90% of home's value
- NO closing costs - except recording fee



Pictured are **Melanie, Louis, Lisa and Pam** from MCU's Real Estate Department. Please contact them for your real estate loan needs at 874-1477 or (800) 451-1477



**MIZZOU
CREDIT
UNION®**

First and Broadway • P.O. Box 1795 • Columbia, MO 65205-1795 • www.mizzoucu.org
Phone: (573) 874-1477 (800) 451-1477 • FAX: (573) 874-1300 • TTY-TDD (573) 817-5445

Your Accounts Federally Insured By



MCU © All Rights Reserved
Revised 02/99

MIZZOU
WEEKLY

Publications and Alumni Communication
407 Reynolds Alumni and Visitor Center
Columbia, MO 65211

University Libraries
University of Missouri

Digitization Information Page

Local identifier MizzouWeekly(print)

Source information

Format	Newspaper
Content type	Text with images
Source ID	Duplicate copies University Archives weeded out
Notes	Volume 20: Issue 31, May 31, 1999 is a photocopy of the original.

Capture information

Date captured	July-December, 2022
Scanner manufacturer	Plustek OpticBook
Scanner model	A300 Plus
Scanning system software	Book Pavilion
Optical resolution	600 dpi
Color settings	8 bit grayscale for majority of pages; 24 bit color for color illustrations/portraits/photographs
File types	tiff
Notes	

Derivatives - Access copy

Compression	Tiff: LZW compression
Editing software	Adobe Photoshop 2022
Resolution	600 dpi
Color	same as captured
File types	pdf created from tiffs
Notes	Images cropped, straightened, and brightened.