

# MIZZOU

## WEEKLY

University of Missouri-Columbia Sept. 23, 1999

### INSIDE THE WEEKLY

Page 3: The University's 1999 United Way campaign is flying high after a kickoff breakfast Sept. 17. This year's campaign goal is \$393,500.



## Boosting the life sciences

*\$14 million for Life Sciences Center would be MU's largest federal grant.*

Mizzou's decade-long dream of a comprehensive life sciences research center got a big boost Monday. U.S. Sen. Kit Bond, R-Mo., traveled to campus to announce a giant step forward in funding for the \$50 million project.

A \$14 million federal appropriation for a life sciences center at MU was approved last week by the Senate Appropriations Committee, Bond said, and is scheduled to be taken up this week by the full Senate.

"Successes in medicine in the next century will rely immeasurably on developments achieved through genetic research and engineering," Bond said. "We want Missouri to be at the forefront of that technology. To get there, I am renewing my commitment to support MU in its efforts to be out front in biotech research."

Bond is chair of a Senate subcommittee on appropriations for the Veterans Administration, Housing and Urban Development and independent agencies. He inserted the funding in his subcommittee's spending plan. That funding proposal still must be approved by the House of Representatives and signed by the president.

"I intend to stay with it and make sure we have the resources and programs that will continue to make the University of Missouri at Columbia one of the outstanding research and life science centers in the nation," Bond said.

"Adequate facilities are absolutely necessary to retain

top the quality scientists, physicians, instructors and graduate students that we already have and to attract more."

If approved, the \$14 million appropriation would be the single largest federal grant that MU has received, said Chancellor Richard Wallace. He added that the Life Sciences Center will be the campus' No. 1 priority in capital spending. During the legislative session which begins in January, MU will ask the state to appropriate \$30 million for the project.

"The Life Sciences Center will allow us to capitalize on the collaborative, interdisciplinary tradition that is very strong on this campus," Wallace said. "For the first time, scientists from many colleges and schools will be together at one location for interdisciplinary research on human and animal health, food and fiber production, and protection of the environment."

Jack Burns, vice provost for research, credited recent successes in research funding at MU to a comprehensive campus plan to bolster outside grants, Bond's announcement, Burns said, means that new faculty who come to MU through the mission enhancement program will have first-rate laboratory space.

"Without this building, we're really not going to be able to have the mission enhancement faculty develop their full potential," Burns said. "That includes being able to get students into the laboratories and put state-of-the-art instrumentation into their hands. It means a good learning experience for students as well as helping our scientists be competitive for extramural grants."

See Life Sciences on Page 6

## A window into the theater

Shortly after arriving at MU last fall, David Crespy founded The Missouri Playwrights Workshop, a weekly forum through which students develop and perform new plays.

Crespy, an assistant professor of theater, brought with him more than 20 years' experience as an award-winning playwright, actor and director. His plays have been performed all over the United States, including New York's off-off Broadway.

The Missouri Playwrights Workshop operates in a similar fashion as the WaterFront Ensemble, a group cofounded by Crespy in 1987 in Hoboken, N.J. He and three other writers met weekly and read their work to each other. "It was great because there was the sense that if I wrote it, someone would read it out loud, I'd hear it, and I'd be able to write the next scene," Crespy says.

This same supportive atmosphere is found at the Missouri Playwrights Workshop which, Crespy points out, is the second part of the new play development process. The first step starts in the classroom, where plays are initiated through exercises, improvisations, and readings.

From there, the material goes to the workshop, where playwrights will hear their work read in public for the first time and receive criticism.

The first reading of Michael Kateman's play last May, reminded him of a reoccurring dream he's had since childhood in which he's standing on a busy street in nothing but his underwear. A student in Crespy's advanced playwriting course, Kateman, director of the Graham Center for Estate Planning and Endowments, has since sat through several readings and revisions of his play *Ruby Nelle*, which will be performed on stage October 1-3, directed by theater department chair Weldon

Durham.

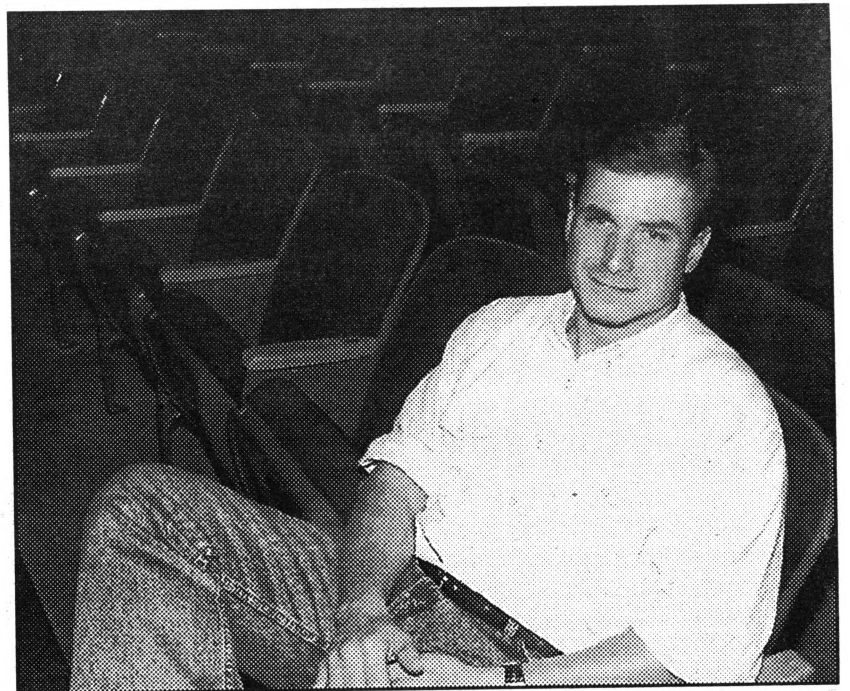
The workshop, Kateman says, is a great way to enhance the classroom learning experience. "Classmates are comfortable with each other, but there's more at stake when you're in the workshop listening to strangers read your work," he says. "You don't have an opportunity to explain what you're hoping to accomplish at the workshop, because it is a performance."

"Playwrights need to see their work performed in order to learn how to write for the stage," Crespy says. "A playwriting program cannot exist if the playwrights don't have productions. Even if it's bare bones, the play's up, it's running and the playwrights can see it."

The playwrights workshop is one component in the overall vision of MU as a Center for Literary Arts. The College of Arts and Science is developing such a center that will feature the campus' strengths in creative writing, screen and theatrical writing, nonfiction prose writing, expository writing, professional editing, and design and illustration.

Cuts in national funding for the arts make places like MU the last holdout for new work that's different, experimental, interesting, controversial and exciting, Crespy says.

"You can choose commercial means that appeal to the lowest common denominator, or try to push the envelope," Crespy says, "I'd rather be involved with a



Steve Morse photo

David Crespy, founder of the Missouri Playwrights Workshop, says plays written by MU students "push the envelope" of new drama.

university theater that pushes the envelope and that's something that MU theater has been doing with its new plays for many years."

The Missouri Playwrights Workshop meets every Tuesday night this fall in the Memorial Union. For more information, call Crespy at 882-0535 or visit the website at <http://www.missouri.edu/theatdc/mpw>.

Dear MU Colleagues:

Fall is an exciting time on a University campus. At MU, our full community of faculty, staff and students is together again. It also is the time of year that we think of the larger community of which we are a part—our friends and neighbors in Columbia and mid-Missouri who are served by the 29 United Way agencies.

This year, our campus is fortunate to have representing us some very busy and talented people who are willing to share their time to take a leadership role in our campaign. I am confident that the work of this gifted team will enable us to reach our goal of \$393,500.

I am very proud of the tremendous showing of support from the MU campus for the United Way. Not satisfied with just meeting and sometimes exceeding our goals, MU students, faculty and staff have further proven their concern for their neighbors by volunteering many hours of their personal time toward Day of Caring activities—a most successful and appreciated effort.

I encourage each of you to consider this opportunity to help your neighbors in need. As you think about making a gift, I urge you to take this opportunity to learn more about our Columbia Area United Way and what its member agencies mean to each of us. Thank you very much.

Sincerely,

*Richard L. Wallace*

Richard L. Wallace  
Chancellor

**THE STATE OF MIZZOU**

A general faculty meeting has been scheduled for 3:30 p.m. Wednesday, September 29 in the Memorial Union Auditorium. Chancellor Richard Wallace and UM System President Manuel Pacheco will discuss budget and planning issues at the campus and the System levels. Beth Geden, chair of Faculty Council and professor of nursing, will give a report on council activities. A reception will follow immediately in S110 Memorial Union.

**A LOW-COST LINK**

TigerLink is Mizzou's premier internet service, and now it makes more sense than ever to use this high-speed modem pool that connects you to the MU computing backbone from off-campus locations. Beginning Sept. 15, the monthly charge for using TigerLink has been cut in half — from \$10 for 30 hours of use to \$5.

Faculty and staff who subscribe to TigerLink will see the reduced rate on their October billing statement. The goal, says Terry Robb, director of Mizzou Telecom, was to create a special "academic rate" to

encourage use and take pressure off the oversubscribed no-charge modem pool. The lower rate has greatly increased subscriptions, he says. To sign up for TigerLink, visit the IAT Services Outpost at S303 Memorial Union or visit the Mizzou Telecom Building at 920 S. College Ave.



**REMEMBERING 'BLACK JACK'**

Few people can claim as long an association with MU as the late Jack Matthews. His connection with the campus spanned 46 years as a student, faculty member and the first and only dean of students. That last position earned Matthews the nickname of "Black Jack" from students who were called in to the dean's office for disciplinary matters. Even if they didn't know Matthews, Missourians from around the state would probably recognize his voice — for 25 years he was the public address commentator at all Tiger football games.

Matthews will be honored

today when the second-floor lobby of the Memorial Union's south wing is named in his memory. The University community is invited as Matthews' family, friends and former colleagues take part in a dedication ceremony at 2 p.m. Sept. 23. Charles Schroeder, vice chancellor for student affairs, will unveil a display of photos and memorabilia that chronicle Matthews' career.



**'Excellence through change'**

Friends and alumni of the College of Business joined University faculty and administrators at a groundbreaking ceremony Sept. 18 for Cornell Hall, the college's new home. Dignitaries lined up in front of a mock silhouette of the new building and spaded up a few shovels full of dirt from the South Quad.

Cornell Hall will be located south of the Reynolds Alumni and Visitors Center. The new building will cost an estimated \$27.6 million to build and equip, and will be completed in the summer of 2002. At nearly 150,000 square feet, Cornell Hall will have more than twice the space available in Middlebush Hall, the college's current home.

Cornell Hall is named for Harry Corneil, a 1950 MU business graduate who is chairman of Leggett & Platt, Inc., a Fortune 500 company headquartered in Carthage, Mo. Harry and Ann Corneil, in conjunction with Leggett & Platt, made a \$3 million gift to the college in 1996, just over \$2.5 million is being used for the new building, and the remainder is funding an information systems professorship.

Steve Morse photo

**Get Caught Reading a Banned Book**

Stop by the General Book Department of University Bookstore September 25 through October 2 and discover the wide variety of books banned during the 1990s. Help defend freedom of speech and freedom of the press. Reading is a right — open a book and open your mind.

**University Bookstore**

Main Level Brady Commons 882-7611  
TDD: 882-3985 www.bookstores.missouri.edu  
Open: Mon-Thurs: 8-7, Fri: 8-5, Sat: 10-5

Now open Sunday 1-6

**M** A University owned and operated bookstore.

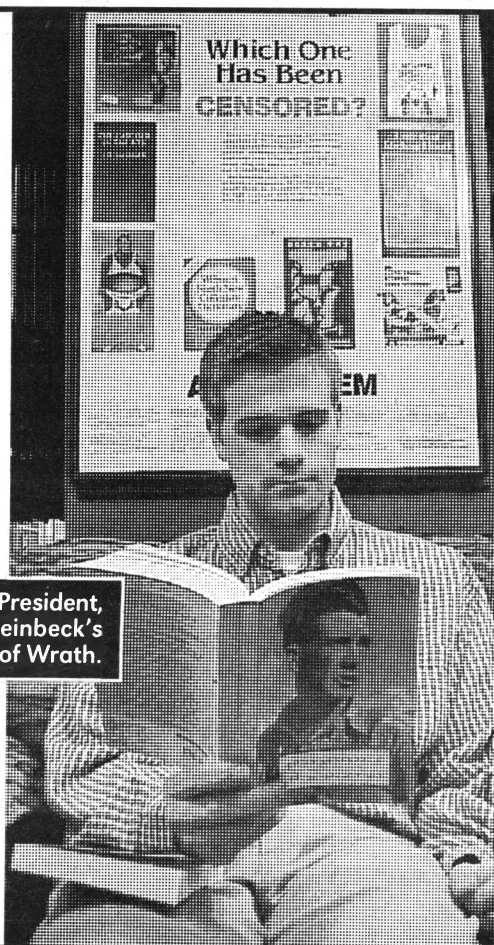


Todd Kennedy, 1999 MSA President, caught reading John Steinbeck's *The Grapes of Wrath*.

Don't forget your

**FACULTY STAFF RETIREE 10% OFF DISCOUNT**

on almost everything we sell!



**MIZZOU WEEKLY**

Volume 21 Number 5

A publication for University of Missouri-Columbia faculty and staff, published every Thursday during the academic year and twice a month during the summer by Publications and Alumni Communication, a department of University Affairs, 407 Reynolds Alumni and Visitor Center, 882-7357. News deadline is noon Thursday the week before publication. Annual subscriptions are available for \$25.

Editor . . . . . John Beahler  
Advertising . . . . . Will Miller  
Assistants . . . . . Jana Long, James Macanujo  
Photographers . . . . . Rob Hill, Steve Morse  
Writer . . . . . Sue Richardson  
Designer . . . . . Andrea Fischer



Printed with soy ink on recycled newsprint containing 90 percent to 100 percent post-consumer waste.

# Building on community

A hot air balloon tethered on Lowry Mall last Friday morning, symbolized the lofty goals of the University's United Way campaign this year. While the balloon danced in the breeze, inside Memorial Union scores of faculty, staff and student volunteers kicked off the campaign.

The University's campaign goal this year is \$393,500, a 2 percent increase over last year. A key strategy this year will be to increase the percentage of MU faculty and staff who give to United Way, says Gary Smith, director of admissions and registrar and co-chair of the campus campaign.

"The University is all about community; students, faculty and staff working together on academic activities," said Bruce Walker, dean of business, who with his wife Pam serves as co-chair of this year's Columbia Area United Way campaign. "United Way is also very much a community, working to serve the needs of people in our community from very young people to people in their senior years."

Chancellor Richard Wallace also urged the University family to participate in this year's United Way campaign, calling it "a statement of commitment by this institution to the community of which we are a part."

The University is the single largest giver in the Columbia area campaign, Wallace noted, "But you don't measure

the kindness of a community by the amount of money given to charity." He pointed out that many MU faculty, staff and students are active volunteers at United Way agencies.

UM System President Manuel Pacheco said that the University and United Way "enjoy a symbiotic relationship because we have important mutual interests." Pacheco noted that many University community members have received help and support from United Way agencies or are close to individuals who have.

The United Way is "absolutely necessary in this technological age that sometimes seems intent on driving us apart."

Joining Smith as campus United Way campaign co-chairs are Dick Dowdy, associate dean of human environmental sciences; and Tom Freeman, professor emeritus of geological sciences. Heading up the University Hospitals and Clinics division is Tommy Carter, manager of business and fiscal operations. Nikki Krawitz and Bonita Lenger from UM System controllers office, are co-chairs of the UM System Region.

Ruth Brent, professor and chair of environmental design, will lead the Academic I Region. Mike Nolan, director of international agriculture programs, will head up the Academic II Region. Julia Curry, director of building services, will lead the Administrative Region.



Rob Hill photo

Columbia hot-air balloonists George Thomas, left, and J.R. Richardson inflated a giant black-and-gold balloon on Lowry Mall Friday morning to publicize the University's 1999 United Way campaign.

Please Join

University of Missouri System — State Government Relations  
For a Retirement Reception Honoring

## MARILYN SELOVICH

For Service to the University  
from August 18, 1958 to September 30, 1999

Reception to be held from 3 to 5 p.m., Friday, September 30,  
at the Reynolds Alumni Center

### Parking & Transportation Services

Turner Avenue Garage  
Level 2  
882-4568

#### Attention Campus Permit holders:

Please allow extra time to and from work on  
Friday, September 24th, as there will be  
hundreds of visitors on campus for various  
departmental events.

## Roma Eisenstark

*Memorial Lecture in Cancer Research*

"HIV (the cause of AIDS and co-factor of several cancers):  
Some novel approaches to its control"



### Robert C. Gallo

Dr. Gallo is Director of the Institute of Human Virology, School of Medicine, University of Maryland-Baltimore and is a member of the National Academy of Sciences. He and his colleagues independently discovered the human immune deficiency virus type 1 (HIV-1) and provided the evidence that it causes AIDS.

Conservation Hall, Natural Resources Bldg.  
September 28, 1999 • 3:30 p.m.

*This lectureship was initiated in 1984 by the family and friends of  
Abraham Eisenstark, Emeritus Professor of Biological Sciences.*

**NEW!**  
**ISLAND  
Smoothies  
OASIS**

Available at  
**Applause! Coffeehouse.**

Located in  
Memorial Union North



# CALENDAR

Send calendar items by Campus Mail to  
Mizzou Weekly Calendar, 407 Reynolds Center,  
by noon Thursday the week before publication.  
Events are free and open to the public unless otherwise noted.

## Concerts and Plays

**Thursday, September 23**  
**INTERNATIONAL WEEK: MPB Brazilian**  
Pop Music will be performed from noon-1  
p.m. on Lowry Mall.  
**THEATER SERIES: Riot Girl** will be  
performed at 8 p.m. tonight, Sept. 24-25,  
and Sept. 30-Oct. 2, and at 2 p.m. Oct. 3 in  
the Corner Playhouse. For ticket  
information, call 882-PLAY.

**Friday, September 24**  
**JAZZ SERIES: "An Evening with Branford**  
Marsalis" will be presented at 8 p.m. in the  
Missouri Theatre. For ticket information,  
call 874-1944.

**Friday, October 1**  
**PLAYWRIGHTS WORKSHOP PLAY:**  
*Ruby Nelle*, a new play by Mike Kateman  
based on the life of MU donor Ruby Todd  
McVean, will be performed at 7 p.m. tonight  
and tomorrow, and at 2 p.m. Oct. 3 in  
Launer Auditorium at Columbia College.  
Cost: \$5.

**Friday, September 24**  
**RESEARCH TELECONFERENCE:** The  
Office of Research is sponsoring a  
teleconference from the National Council of  
University Research Administrators on "Cost  
Sharing" from 10 a.m.-2 p.m. in 112  
Hulston Hall. Registration required, call  
882-9500.

**Tuesday, September 28**  
**LIBRARY DATABASE WORKSHOP:** A  
workshop on Internet searching will be  
presented from 10-11:30 a.m. today, Nov. 18  
and Dec. 1, and from 3:30-5 p.m. Oct. 26 in  
126 Lottes Health Sciences Library. For  
more information, call 882-6141.

**Wednesday, September 29**  
**FIRST AID/CPR TRAINING:** American Red  
Cross certified training in adult first aid and  
CPR will be offered from 8:30 a.m.-3 p.m.  
in the Environmental Health and Safety  
classroom in the Research Park  
Development Building. The class also will  
be offered Oct. 6, Nov. 3 and Dec. 1.  
Registration required, call 882-7018.

## Exhibits

**MUSEUM OF ANTHROPOLOGY:** The  
museum's exhibits focus on Native  
American cultures and the history and  
prehistory of Missouri. The museum, located  
at 100 Swallow Hall, is open from 9 a.m.-4  
p.m. Monday to Friday.  
**MUSEUM OF ART AND  
ARCHAEOLOGY:**  
Special Exhibits:  
• "Fabrications: a Sampling of Multicultural  
Textiles" is on display through Dec. 19.  
• "Figuring the Human in Twentieth-Century  
Art" is on display through Nov. 7.  
• "Image and Imagination in African Art" is on  
display through 1999.  
• "Jaguar's Realm: Ancient Art from Mexico to

## Courses

**Thursday, September 23**  
**ACCOUNTING SERVICES TRAINING:**  
"Account Types and Subcodes" will be  
presented from 9 a.m.-noon today and again  
Oct. 14, Nov. 11 and Dec. 9 in the second-  
floor conference room in Turner Avenue  
garage. Registration required, call 882-3051.  
**PROCUREMENT COURSE:** "ProCard  
Orientation" will be presented from 1:30-3  
p.m. today and again Oct. 21, Nov. 18 and  
Dec. 15 at 1105 Carrie Francke Drive.  
Registration required, call 882-1450.

## Compare and Save!

# XEROX

multi-purpose paper

Stock Number

## 0513-A

## \$22.36/case

# General STORES 882-6906



"BRINGING COMMITMENT TO A HIGHER EXCELLENCE"



The Missouri Playwrights Workshop  
at the University of Missouri-Columbia

presents preview performances of

# Ruby Nelle

A new play  
by Michael Kateman

Based on a true story, the play chronicles the coming  
of age of a young woman from a Missouri town working in  
Washington, D.C., shortly before World War II. It examines how  
one spunky woman survived in a man's world.

7 p.m., Oct. 1, 1999	Launer Auditorium (Columbia College)
7 p.m., Oct. 2, 1999	901 Rogers Street
2 p.m., Oct. 3, 1999	Columbia, Mo.

Tickets: \$5 (General Admission) available at

The Pen Point

917-919 East Broadway, Columbia, Mo. 65201  
(M, T, W, F 9:30 a.m.-6 p.m.; Thurs. 9:30 a.m.-8 p.m.; Sat. 9:30 a.m.-5:30 p.m.)

or by calling 573-449-6956.



**Where:**  
Brady Mall

**When:**  
10 a.m. - 3 p.m., Oct. 6

**Why:**  
Where else can you  
learn about energy, chip  
tires for fuel and win a  
T-shirt!?!?

## JOIN THE PARTY!

Sponsored by:



Peru" is on display through 1999.

• "Los Caprichos" is on display through next April.

Ongoing Exhibits:

• "The Saul and Gladys Weinberg Gallery of Ancient Art"

• "Early Christian and Byzantine Gallery"

• "Gallery of European and American Art"

The museum, located in Pickard Hall, is open from 9 a.m.-5 p.m. Tuesday-Friday, 6-9 p.m. Thursday and noon-5 p.m. Saturday and Sunday.

**ART FOR LIFE:** Works by staff members and volunteers at MU's Health Sciences Center are on display in the lobbies of University Hospital and Clinics and Ellis Fischel Cancer Center through September 30.

**ROGERS GALLERY:** "Brilliant Light, Kindling Shadows-Images from a Journey to Japan," photographs by Benjamin Schwarz, associate professor of environmental design, will be on display through Oct. 15 in 142 Stanley Hall. Rogers Gallery is open from 9 a.m.-4 p.m. Monday-Friday.

**STATE HISTORICAL SOCIETY:**

• "Masterworks of Thomas Hart Benton: A Salute Continued" is on display in the gallery through September. The gallery is open from 8:30 a.m.-4 p.m. Monday-Friday and is closed on Saturday.

• "Carl R. Gentry, Watercolors and Oils" is on display in the north-south corridor through Dec. 31.

• "Decades: 1899 to 1969, Editorial Cartoons" is on display in the east-west corridor. The corridors are open from 8 a.m.-4:30 p.m. Monday-Friday and 9 a.m.-4:30 p.m. Saturday.

**UNIVERSITY ARCHIVES:** Several exhibits of historic photographs are available through the archive's web site:

• "Meet Me at the Union," the construction, dedication and growth of Memorial Union.

• "Getting Physical," early photos of MU women's athletics

• "Mizzourah!" the early years of MU football

• "Cows on the Lawn," the early days of dairy science at Mizzou

• "Mizzou from the Air: 1919"

• "Come On Home Tigers," early MU homecomings

• "Dramatic Images," photos of MU theatrical productions from the 1920s to the 1940s

• "Significant Dates in the History of MU"

The archive's web site is at:

<http://www.system.missouri.edu/archives>

## Films

### Friday, September 24

**MSA/GPC FILM SERIES:** *Varsity Blues* will be shown at 7 and 9:30 p.m. in Memorial Union Auditorium tonight. Free with an MU ID.

### Tuesday, September 28

**MSA/GPC FILM SERIES:** *Scarface* will be shown at 8 p.m. tonight in Memorial Union Auditorium. Free with an MU ID.

### Thursday, September 30

**MSA/GPC FILM SERIES:** *The Abyss* will be shown at 8 p.m. tonight in the Natatorium. Free with an MU ID.

### Friday, October 1

**MSA/GPC FILM SERIES:** *Casino* will be shown tonight and tomorrow at 7 and 9:30 p.m. in Memorial Union Auditorium. Cost: \$1 with an MU ID.

## Lectures and Seminars

### Thursday, September 23

**INTERNATIONAL AFFAIRS SEMINAR:**

Ellen Atkins, professor of accounting at Columbia College, and Charles Atkins, retired Columbia businessman, will present "The Hague International Appeal for Peace Conference" from noon-1 p.m. in S16 Memorial Union.

### CHEMICAL ENGINEERING LECTURE:

Robert Fulton Dye, of Dye Engineering & Technology, Inc. in Sugarland, Texas, will present "Ethylene Oxide Technology" at 3:30 p.m. in Ketcham Auditorium in the Engineering Building East.

### NUTRITIONAL SCIENCES LECTURES:

Kevin Fritsche, associate professor of animal science, will present "Fish Oils, Cytokines and Infectious Disease" at 4 p.m. in 209 Gwynn Hall.

### Friday, September 24

**ART & MUSIC SYMPOSIUM:** Susan Langdon, adjunct professor of art history and archaeology, will present "Music in Ancient Greek Art" and Andrew Ladis from the University of Georgia will present "Giotto and Trecento Musical Theory" beginning at 6 p.m. in 106 Pickard Hall. A reception will follow at 7 p.m. in the Museum of Art and Archaeology Cast

Gallery and the Buder Brass Quintet will perform in the Museum Galleries. For more information, call 882-6711.

**ECONOMICS LECTURE:** Joseph Tracy from the Federal Reserve Bank of New York will present "Uncertainty and Labor Contract Durations" at 4 p.m. in 212 Middlebush Hall.

**GEOLOGICAL SCIENCES LECTURE:** Brian Huber from the Smithsonian Institute will present "Marine Stable Isotope Record of the Mid-Cretaceous Supergreenhouse" at 3 p.m. in 108 Geological Sciences Building.

**CHEMISTRY COLLOQUIUM:** Jay Kochi from the University of Houston will present "Donor/Acceptor Organizations and the Electron Transfer Paradigm for Chemical Reactivity" at 4 p.m. in 103 Schlundt Hall.

### Saturday, September 25

**ART & MUSIC SYMPOSIUM:**

• The first session of lectures will be from

10:30 a.m.-noon. Katherine McIver from the University of Alabama-Birmingham speaks on "Art and Music in Vasari's Lives," Katherine Powers from California State University-Fullerton speaks on "Musical Images for Devotions: Benedetto Coda's Altarpiece for the Rosary," and Roy Sonnema from Georgia Southern University speaks on "Music as Pleasurable Sound in Seventeenth-Century Dutch Painting."

• The second session of lectures will be from 1:30-3 p.m. Peter Schmunk from Wofford College speaks on "Music and the Paintings of Corot: Emulation and Figuration" and Melinda Boyd Parsons from the University of Memphis speaks on "Synaesthesia, Occultism and Interdisciplinary Modernism."

All lectures will be held in 106 Pickard Hall. For more information, call 882-6711.

See Calendar, Page 6


**Registration**  
573-882-6006

# Schedule of Courses

[www.missouri.edu/iats/tg](http://www.missouri.edu/iats/tg)

MON	TUES	WED	THUR	FRI
				Access Forms and Reports... 1-4 PM
				CGI with Perl... 2-5 PM
Netscape ..... 1-4 PM	Intro to HTML...1-4 PM	Intermediate HTML...1-4 PM	Intro to Photoshop ..... 9 AM-12PM Showme: Unix..... 9 AM-12PM Int. Access..... 1-4 PM	Intro to Word..... 9 AM-12PM
4	5	6	7	8
	Intro to HTML... 9 AM-12PM	Intro to Excel... 9 AM-12PM	Int. HTML..... 9 AM-12PM	Int. Excel ..... 9 AM-12PM
11	12	13	14	15
	Adv. Access..... 1-4 PM	Netscape Composer..... 9 AM-12PM	Access Forms and Reports ... 1-4 PM Windows 95/98 ...1-4 PM	Int. Word ..... 9 AM-12PM Int. Photoshop..... 1-4 PM
18	19	20	21	22
Intro to Word....1-4 PM	Int. Excel ..... 9 AM-12PM Adv. HTML..... 10 AM-12PM	Intro to Word .. 9 AM-12PM Adv. Photoshop ..... 9 AM-12PM Intro to Outlook 98 .....1-3 PM Int. Word ..... 1-4 PM	Netscape Composer..... 9 AM-12PM Programming In Perl ..... 10 AM-12PM Intro to Access..1-4 PM	Adv. Excel..... 9 AM-12PM Adv. Word..... 9 AM-12PM Adv. Word..... 1-4 PM Windows 95/98 ...1-4 PM
23	24	25	26	27
Int. Access ..... 1-4 PM	PowerPoint ..... 9-11 AM Adv. Excel..... 9 AM-12PM Intro to Access..1-4 PM	Intro to Outlook 98 ..... 9-11 AM Intro to Excel ... 9 AM-12PM Adv. Access..... 1-4 PM SAS part 2 ..... 1:30-4:30 PM	Int. Outlook 98... 9-11 AM CGI with Perl ..... 10:00 AM-12:00 PM Netscape Messenger and Newsgroups..... 1-4 PM	Int. Outlook 98... 9-11 AM Netscape ..... 9 AM-12PM Internet Explorer 1-4 PM SAS part 3 ..... 1:30 PM-4:30 PM

# October



**Hurry! Call 882-6006 to register!**

**IATS Computer Courses**  
These non-credit courses are free of charge & open to MU faculty, staff and students. Registration is first-come, first-served. Call 882-4568 for parking permission.

**Course Descriptions**  
[www.missouri.edu/iats/tg](http://www.missouri.edu/iats/tg)

Calendar, from Page 5

**SURGERY LECTURE:** Jack Curtis, professor and chief of cardiothoracic surgery, will present "Cardiac Transplantation" from 9-10 a.m. in M105 Medical Sciences Building.

**Tuesday, September 28**

**CANCER RESEARCH LECTURE:** Robert Gallo, director of the Institute of Human Virology at the University of Maryland-Baltimore, will present the Roma Eisenstark Memorial Lecture in Cancer Research, "HIV (the cause of AIDS and co-factor of several cancers): Some Novel Approaches to Its Control" at 3:30 p.m. in Conservation Hall at the Natural Resources Building.

**PHARMACOLOGY LECTURE:** David Castle, professor of cell biology at the University of Virginia, will present "Pathways and Regulation of Salivary

Protein Secretion" at 4 p.m. in M558 Medical Science Building.

**Wednesday, September 29**

**ECONOMICS LECTURE:** John Abowd from Cornell University will present "Inter-Industry and Firm-Size Wage Differentials in France and the United States" at 4 p.m. in 212 Middlebush Hall.

**MIDDAY GALLERY EVENT:** Fiber artists Sharon Kilfoyle and Peter Noce will present "Shibori: A Tradition of Color and Pattern" at 12:15 p.m. in the Museum of Art and Archeology.

**PHARMACOLOGY LECTURE:** David Findlay, associate professor of orthopaedics at the University of Adelaide, will present "Molecular Biology of Bone: Cytokines, Cancer and Calcitonin" at 4 p.m. in M558 Medical Science Building.

**Thursday, September 30**

**ECONOMICS LECTURE:** Bart Hamilton from the Olin School of Business at Washington University will present "Bayesian Analysis of Treatment Models for Longitudinal Data" at 3:30 p.m. in 310 Middlebush Hall.

**INTERNATIONAL AFFAIRS LECTURE:** LeRoy Olsson, professor emeritus of veterinary medicine, will present "Education in the Ukraine: a Report On a Year in a Veterinary College" from noon-1 p.m. in S16 Memorial Union.

**NUTRITIONAL SCIENCES LECTURES:** Shanna Swan, professor of family and community medicine, will present "Alteration in Male Reproductive Development: The Role of Endocrine Disrupting Chemicals" at 4:15 p.m. in 209 Gwynn Hall.

Meetings

**Thursday, September 23**

**STAFF ADVISORY COUNCIL MEETING:** The Staff Advisory Council will meet today at 1 p.m. in S206 Memorial Union.

**FACULTY COUNCIL MEETING:** The Faculty Council will meet today at 3:30 p.m. in S203 Memorial Union.

**Tuesday, September 28**

**MISSOURI PLAYWRIGHTS WORKSHOP:** *Calvary 2*, a new play by Henry Sullivan, professor of Spanish, will be read at 7 p.m. in Stotler Lounge III. Audience members are encouraged to critique the plays after each performance. For more information, call David Crespy at 882-0535, or [crespyd@missouri.edu](mailto:crespyd@missouri.edu).

Special Events

**Friday, September 24**

**INTERNATIONAL BAZAAR:** International Students Organization will display arts, crafts and food samplings from their countries from 10 a.m.-2 p.m. on Lowry Mall.

**Saturday, September 25**

**INTERNATIONAL WEEK:** A cricket demonstration will be presented from 6-8 p.m. on Stankowski Field.

**Wednesday, September 29**

**GENERAL FACULTY MEETING:** The fall semester meeting of MU faculty will be held at 3:30 p.m. in the Memorial Union Auditorium. Chancellor Richard Wallace and UM System President Manuel Pacheco will discuss budget and planning issues at the campus and the System levels. Beth Geden, chair of Faculty Council and professor of nursing, will give a report on council activities. A reception will follow immediately in S110 Memorial Union.

Life Sciences

from Page 1

Members of Mizzou's research community were cheered by Bond's announcement. "The message is that things are starting to come together," said Doug Randall, professor of biochemistry and director of MU's Interdisciplinary Plant Group. "It's a start toward solving our infrastructure problems. It's just a start, but it's a significant start — very significant."

Other campus researchers agreed that the announcement sends a positive message. "It says a couple of things," said Don Riddle, professor of biological sciences and director of the Molecular Biology Program. "One is that all the hard work has a payoff to it. And second, it encourages faculty to look toward the future in a way that's much more positive. If this is successful, we really have the means to fulfill the potential of the campus."

The Life Sciences Center is planned for the northwest corner of College and Rollins avenues, south of the Physics Building. It would bring together researchers from the colleges of agriculture, food and natural resources; arts and science; human environmental sciences; veterinary medicine and engineering; and the School of Medicine.

Plans call for the research center to contain 124,000 square feet of usable space that will house 50 research laboratories; plant and insect growth facilities; small animal facilities; DNA,

- Great benefits and a caring atmosphere.
- Flexible hours.
- Easy to apply.

What are you waiting for?

Employment Expo

4 to 7 p.m.

Tuesday, September 28

University Hospital and Clinics

Main lobby

Come to the Employment Expo and discover all we offer our employees, including flexible hours, college tuition assistance, competitive salaries, medical and dental coverage, retirement benefits and much more!

University of Missouri Hospitals and Clinics has a wide range of full-time and part-time positions open at University Hospital and Clinics, Children's Hospital, Ellis Fischel Cancer Center and University Physicians. These positions include, but are not limited to:

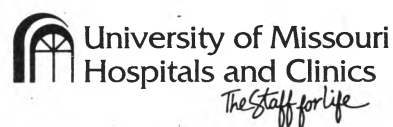
- Custodians
- Food service workers
- LPNs and RNs
- Medical records transcriptionists/coders
- Office support staff, all levels
- Patient accounts representatives
- Patient service representatives
- Pharmacists
- Pharmacy technicians
- Telecom operators
- Unit clerks
- Unit attendants

While you're at the Employment Expo, you'll have the opportunity to:

- Learn which job is right for you.
- Complete employment applications.
- Talk with department representatives.
- Obtain information about resume writing and interviewing skills.

This event is free and open to anyone who is interested in employment opportunities. Please bring updated resumes. Free parking is available in University Hospital's visitor garage, located on the east side of the hospital. Please call University Hospital's Human Resources Department at (573) 882-8186 or (800) 622-6914 to learn more.

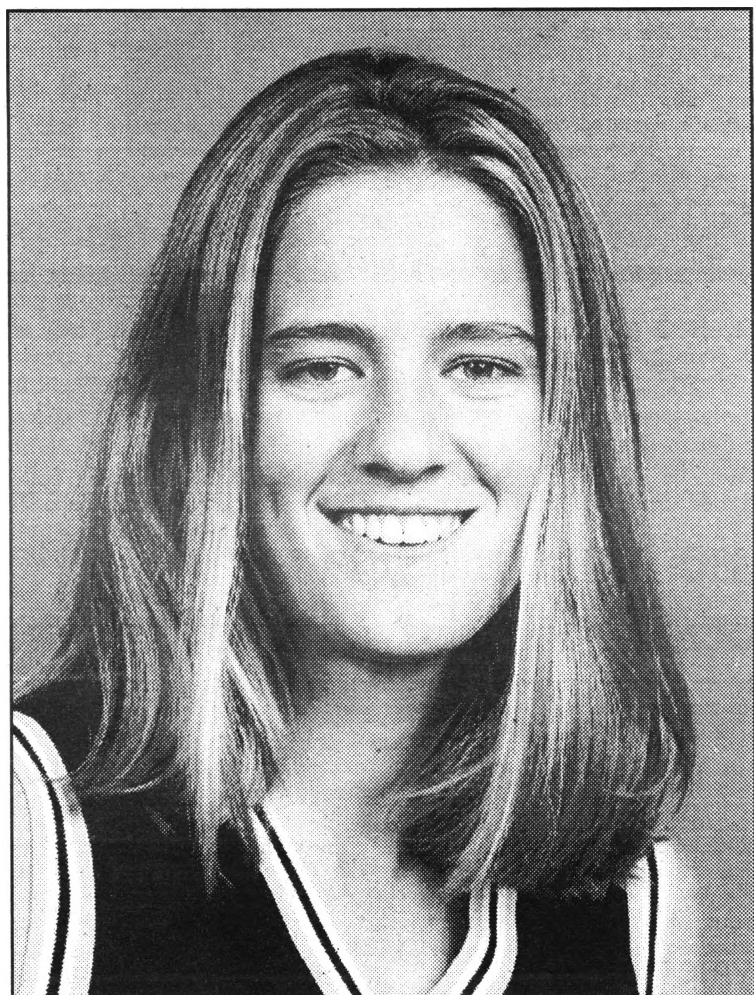
Join our health-care team today. And discover what sets us apart.



**ELLIS LIBRARY  
COPY CENTER'S**

# Scholar Athlete OF THE WEEK

**ALI JOHNSTON**



**1st Team All-Academic Big 12  
1st Team All-Colorado 4A**

*Major: Science Education  
Position: Guard*

**Jefferson County MVP  
All-Region Honorable  
Mention, USA Today**

**BASKETBALL**

**75¢** Full-Color Copies  
when you have five or more full-color  
copies made, 8.5"x11" copies only.

**Ellis Library Copy Service**  
Your full-color copy center.

115 Ellis Library Columbia, MO 65201-5149

Ph. 882-7262 Fx. 884-5004

<http://copy-service.ps.missouri.edu>

Mon. thru Thurs. 7:30am to midnight Fri. 7:30am to 9pm

Sat. 9am to 9pm Sun. noon to midnight

good for Fall '99 Semester only

**What adages do you remember hearing  
most from your parents growing up?**

*Never quit—always work your hardest.*

**What would you do with a million dollars?**

*I would buy a Jeep Wrangler and season  
tickets to the Broncos' games!*

# Classifieds

## EDITING

Professional Editing: Ph.D. in English with twenty years college teaching, experienced in editing, will edit books, articles, proposals, dissertations, major papers, or presentations. 573-446-0959 usual office hours.

## LANDSCAPING

Landscaping services: Tree and Shrub planting, mulching, pruning, seeding, landscape design. Call Something Different Landscaping 445-3479.

## FOR RENT

3 BR 2.5 BA Duplex for sublease. W/D hookup, fireplace. Small pets ok. Available October 1. Call 234-2035.  
2 BR 1 BA at Broadway Village, Carport, AC, W/D hookups, cable, balcony, Available Oct. 1. Subsidized rent \$455, Call 815-9214.

## INVESTMENT OPPORTUNITY

410 acre cattle ranch in mid-Missouri. Nationally recognized registered Angus herd, professional manager working and living on ranch, rich in depreciable assets, owner financing available, call 447-0222.

## CHILDCARE

Before and after-school child care by certified elementary school teacher. Three blocks from Fairview Elementary School. Breakfast, snacks, help with homework, games, loving care. Call Beth 445-4371.

**A home phone number is required in all ads. Campus phone numbers will not be printed. No refunds will be given for cancelled ads. Ads must be typed.**

**Rates:** 30-word maximum \$7.50.

**Deadline:** Noon Thursday of week before publication.

**Mizzou Weekly Classifieds:** Make your check payable to University of Missouri and send to *Mizzou Weekly*, 407 Reynolds Alumni Center, Columbia, Mo. 65211. Attention: Will Miller.



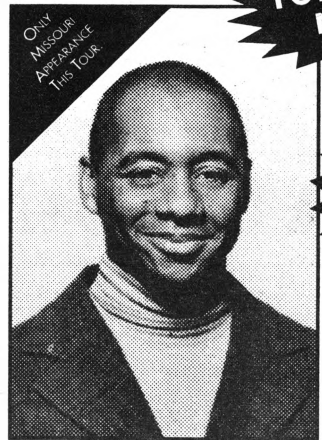
# 1999-2000 "We Always Swing" JAZZ SERIES

"Celebrating Our Fifth Season!"

## "An Evening with Branford Marsalis"

The Saxophonist brings his acclaimed quartet to Columbia for his 1st appearance in 5 years.

**Missouri Theatre**  
Friday, Sept. 24, 8 p.m.  
(\$25 public, \$22 students)



**TOMORROW NIGHT!**  
**SOME TICKETS STILL AVAILABLE!**

### Ticket Information

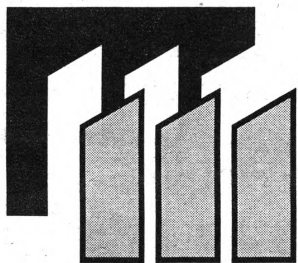
Tickets: Available at all **Neetro-Tix** Outlets. Columbia: Heames Center, Streetside Records, The Blue Note, Columbia Mall, Schnucks, MSA Brady Commons Box Office-MU (Student Discount and Student Charges at Brady Commons only)  
**Information Only: (573) 882-4640**  
**Charge Line: (573) 884-7297 (800) 228-7297**

www.nationalpastimes.com  
E-Mail: jassnbsbl@aol.com



**LAST CHANCE TO BUY SEASON TICKETS AND SAVE!**

# MCU @ Home



MIZZOU CREDIT UNION®

FREE home banking service!  
instant access with IBM PC & modem

- access account balances
- view account history
- transfer funds
- make loan payments
- reconcile your checkbook
- make a check withdrawal
- reorder printed checks
- request stop payments
- download to Quicken or MS Money



First and Broadway • Columbia, MO • (573) 874-1477 or (800) 451-1477 • FAX: (573) 874-1300 • TTY-TDD: (573) 817-5445 • [www.mizzoucu.org](http://www.mizzoucu.org)

Revised 09/99 - MCU © All Rights Reserved

# MIZZOU WEEKLY

University of Missouri-Columbia  
Publications and Alumni Communication  
407 Reynolds Alumni and Visitor Center  
Columbia, MO 65211



University Libraries  
University of Missouri

### Digitization Information Page

Local identifier                      MizzouWeekly(print)

### Source information

Format                                      Newspaper  
Content type                                Text with images  
Source ID                                    Duplicate copies University Archives weeded out  
Notes                                         Volume 21, Number 1, page 6 has a small piece of white paper  
glued to the upper right corner that covers some text.

### Capture information

Date captured                              July-December, 2022  
Scanner manufacturer                    Plustek OpticBook  
Scanner model                              A300 Plus  
Scanning system software                Book Pavilion  
Optical resolution                         600 dpi  
Color settings                              8 bit grayscale for majority of pages;  
24 bit color for color illustrations/portraits/photographs  
File types                                    tiff  
Notes

### Derivatives - Access copy

Compression                                Tiff: LZW compression  
Editing software                            Adobe Photoshop 2022  
Resolution                                    600 dpi  
Color                                         same as captured  
File types                                    pdf created from tiffs  
Notes                                         Images cropped, straightened, and brightened.