

Mizzou Weekly

Bird's eye view
 MU's Raptor Rehabilitation Program rescues birds of prey.
Page 14

Stereotypical research
 Faculty study male gender roles.
Page 2

Jan. 27, 2000
 University of Missouri Columbia
Reminder: Jazz composer Bobby McFerrin will perform at 7 p.m. Jan. 29 in Jesse Auditorium. Call 882-3781 for ticket information..

Semester Calendar
 Photos of turn-of-the-century Mizzou highlight the Spring Semester calendar.
Page 3



At the cutting edge of apparel

ENTREPRENEURIAL Faculty in the Department of Textile and Apparel Management have assembled one of the best apparel technology labs in the country

When Mizzou students graduate with a degree in textile and apparel management many of them go to work for some of the world's largest clothing makers and marketers.

The apparel industry is a fast-paced, competitive, high-tech business. And, as in so many other enterprises, computers are revolutionizing the manufacturing process. The new technology can speed up product development and make manufacturing more efficient.

Computerized cutting machines can zip through bolts of cloth without even using printed patterns as a guide. New software programs allow manufacturers to design a garment right on the computer screen, then lay out the separate components like a jigsaw puzzle so there's minimal waste when they're cut out. Other programs track the cost of making a garment, right down to the last button.

It could be a daunting



Steve Morse photo

HIGH-TECH PEDAGOGY Sharon Stevens, right, instructor in textile and apparel management, introduces students to the latest industry technology, such as this automated cutting machine in MU's Apparel Technology Laboratory.

challenge for these Mizzou students to make the leap from a college classroom to the corporate fast track. Except — they've seen it all before. Thanks to MU's Apparel Technology Laboratory, these graduates have had the kind of hands-on educational experience that has

employers knocking on their doors. The lab, housed in Stanley Hall, contains some of the most sophisticated design and production equipment anywhere. "There are very few apparel technology laboratories in the country that are better than this

one," says Kitty Dickerson, professor and chair of textile and apparel management. While MU students are put through the paces learning the latest clothing design and manufacturing techniques, the apparel lab also is a resource for the entire state and region.

Through the outreach efforts of the Missouri Textile and Apparel Center, manufacturers from all over Missouri and the Midwest come to campus for training on these modern systems.

The new technology helps them streamline their operations and makes them more competitive. "Fast turnaround is the whole secret in this business these days," Dickerson says. "These systems help manufacturers compress their production cycles."

The automated cutting machinery can make them more efficient. "Waste is a big issue for manufacturers," says Betty Dillard, associate professor of textile and apparel management. "Waste can really destroy their profit if they don't manage it well."

One of the most impressive aspects of the lab, she says, is that it is very much a partnership. Companies have donated or provided steep discounts on equipment and software that helped build the lab for a fraction of the nearly half-million dollar actual cost. A cadre of faculty worked long and hard to identify department and campus funding sources.

"We are entrepreneurial," Dickerson says of her department. "We go out seeking and asking, and don't wait for people to come and hand us something. That just doesn't happen."

Governor's budget plan matches UM projections

STATE SUPPORT Carnahan's recommendation would provide 2 percent increase in the University's discretionary funding

In his Jan. 19 budget message to the General Assembly, Gov. Mel Carnahan recommended \$442 million in state appropriations for the UM System's general operating budget for the next fiscal year. If the legislature approves that recommendation, it would represent a 5.5 percent increase over the current year's state appropriation of \$418.8 million.

Of that \$23.2 million increase, however, \$15 million is earmarked for the University's mission enhancement program. The remaining \$8.2 million would represent a 2 percent

increase in discretionary funding for the UM System's core budget, the same percentage increase it received this fiscal year.

That level of state support will meet projections University planners have built into System and campus five-year budget plans: The annual growth in discretionary funds from state appropriations will be an estimated 2 percent in fiscal years 2001 and 2002, and will grow at 3.5 percent in fiscal years 2003 to 2005.

In his spending plan for capital construction projects, the

governor recommended that the legislature approve \$29.9 million in state funding next year for MU's proposed Life Sciences Building — the entire amount the University had requested for the project.

That \$50 million project would dramatically improve the research infrastructure at MU. Earlier this year, U.S. Sen. Kit Bond, R-Mo., announced a large federal grant for the project. If Carnahan's spending plan is approved, it would put construction of the Life Sciences Building on the fast track.

"I am very pleased with the governor's recommendation and hope that it will be supported by the General Assembly," said

Chancellor Richard Wallace. "I was particularly pleased and grateful for his support of our total request for the Life Sciences Center. Given the federal support that is already in hand and the very real possibility of receiving \$29.9 million from the state, we would be less than \$10 million away from total funding for this very high priority project.

"We are engaged in an intense private fund raising campaign for the remaining dollars, and I believe we can raise this amount within a year. While everyone, including the governor, would have preferred a more generous operating budget recommendation, this part of his

budget is within the five-year budget plan that we have developed and we are prepared."

Dealing with Missouri's share of the national tobacco settlement is another issue that legislators will face this session. Missouri could receive \$6.7 billion from the settlement over the next 25 years, and those monies could provide another potential funding source for research and education efforts at the state's universities and colleges.

Although all litigation in the national settlement has not been resolved, Carnahan cautioned, Missouri "must be prepared to

See State Support on Page 14



Detour ahead

As the long-awaited construction of Cornell Hall goes ahead full steam, Maryland Avenue will be closed for an extended period between Turner Avenue and Rollins Street. To help reduce congestion for employees, students and campus visitors, traffic will be rerouted between Conley Avenue and Rollins

Driving through the intersection of Missouri and Conley avenues no longer will be a bottom-banging experience for heavy vehicles since workers built up the grade.

Rob Hill photo

Street via Fifth Street or Missouri Avenue.

In preparation for the detour, a work crew last week built up a low spot in the paving at the intersection of Conley and Missouri avenues. The road work will allow buses, fire trucks and emergency vehicles to get through without dragging.

Stereotypical research

Talking about troubles

BOY TALK Guys are less likely to discuss their feelings

Stereotypes are so widely believed because they are often true. But why? Everyone's heard that "men are from Mars, women are from Venus." We are often told boys are less sensitive than girls because men need to project strength, and cannot handle embarrassment.

But is this correct? Amanda Rose, assistant professor of psychology, said boys do not talk to their friends about their feelings because they see no point. Rose presented her findings, "Giving and Seeking Social Support Within a Friendship" to the Society for Research in Child Development.

Rose measured self-disclosure, or how often children talk about worries, in relationships. She studied more than 500 fifth grade students. Finding a difference between genders was not a surprise, Rose noted. "We almost always find that girls are more likely to talk about their problems," she said. What was interesting was the reason boys gave for not opening up.

"We tend to think boys don't talk about their

problems because they're embarrassed or worried about being made fun of, but we didn't find that," Rose said. "Instead, boys were more likely to report that talking about problems would be a waste of time."

Gender differences can create problems later in life, especially in marriages. Knowing why men and women communicate differently is important, because women's desires to express feelings often conflict with men's disinterest. "Women learn to talk about feelings growing up," Rose said. "Men don't have the same experience."

Currently, Rose is examining whether boys may be more willing to talk about problems that they think can be solved. She also is studying whether girls' desire to communicate may actually have negative side effects.

Girls, Rose notes, will talk to each other about more than feelings. They also talk about each other and that can pose problems. Also, girls may become depressed if they spend most of their time talking about problems.

Knowing fathers best

PARENT TRAP Research studies human fatherhood

Women often do most of the heavy lifting in parenting today. This tends to be a source of consternation to social observers and quite a few mothers, but why is it so?

In light of our evolutionary history, the fact that human males contribute at all to the well-being of their children is surprising, says David Geary, professor of psychology. His work, "Evolution and Proximate Expression of Human Paternal Investment," will appear in the next issue of *Psychological Bulletin*, and is the most comprehensive assessment of human fatherhood ever published.

Fatherhood is rare in mammalian species; in 95 percent of mammals, males make little contribution to their offspring's well-being, Geary said.

In humans, Geary said, it is fairly clear that a father's presence reduces mortality risk. A father's presence also makes children more successful, he said. However, it is not only the men's motives affecting reproductive decisions. Women do not have the potential to sire innumerable offspring and each child comes at a higher price and higher risk. This

gives women the incentive to invest in their children.

Unlike men, women rarely face the prospect of being mateless. As a consequence, Geary said, female humans have evolved in a manner designed to keep men monogamous and thus help them stay invested in their children. These evolved traits include concealed ovulation and prolonged sexual receptivity, thus forcing men into longer-term relationships. Females' hostility toward potential "other women" is a similar trait, as is their reluctance to engage in casual sex, thereby keeping extra mating opportunities low for men.

Geary cited other factors that influence male parental investment: social conventions (such as laws against polygyny), the general health of the relationship with the mother and possibly a genetic predisposition toward fidelity. Some men appear to have a heritable inclination to be monogamous; others do not.

Community collaboration

In an effort to work more collaboratively with the community to solve problems, the MU Police Department will host a special program called "Community Leadership for Community Policing." This course is designed to acquaint members of the University community with the concepts of community policing.

"The town meetings will permit my agency to interact with members of the community to determine perceptions of fear and other problems. Collaboration will be the key for our problem-solving efforts," Chief Fred Otto says.

The course will be held in Room 25 of the General Services Building from 6:30 p.m. to 9:00 p.m. Friday, Feb. 4, and from 9:00 a.m. to 4:00 p.m. Saturday, Feb. 5. At the first session, participants will discuss the department and problem-solving strategies; on the second day they will work to identify solutions.

To register, contact Captain Scott Shelton at SheltonS@missouri.edu, or at 884-2605. Details and registration are available at: <http://web.missouri.edu/~mupdwww/>

Excellence in 'e-learning'

When Mizzou decided to offer online courses, it selected a software company to provide the necessary tools. Now, that software company has selected MU to help develop the next generation of "e-learning" technology.

WebCT, whose products serve almost 4.3 million students at more than 1,000 colleges and universities worldwide, recently

named MU as a participant in its new institute program.

"WebCT is proud to be working with MU, a school already performing exemplary work in online education," said Murray Goldberg, president of WebCT Canada. "As we strive to raise the quality of online instruction, each institute will help us to develop training materials, communicate with each other to share resources and

advance collectively in their research."

According to Diane Oerly, MU's WebCT team leader, the University has used the company's software to support both on-campus and distance education across the full range of academic disciplines. From chemistry to psychology courses, the software has allowed professors to collect writing assignments, create exams, automatically grade quizzes, and keep all students' grades organized and accessible online.

"As an institute, we will serve as a training center for faculty here and at universities in states contiguous to Missouri," Oerly said. "The program will be administered through the University's Information and Access Technology Services and will complement the efforts of Educational Technologies @ Missouri, or ET@MO, the new campuswide department whose goal is to improve education through technology."

MizzouWeekly

Volume 21 No. 18

A publication for the faculty and staff of the University of Missouri-Columbia, published every Thursday during the academic year and twice a month during the summer by Publications and Alumni Communication, a department of University Affairs, 407 Reynolds Alumni and Visitor Center, 882-7357. News deadline is noon Thursday the week before publication. Annual subscriptions are available for \$25.

Editor John Beahler
Advertising: Will Miller
Assistants: Jana Long, James Macanufo
Photographers Rob Hill, Steve Morse
Writer/designer Sue Richardson

Y1.9K: Mizzou in 1900

Winter Semester 2000 Calendar ♦♦ University of Missouri-Columbia



A room in Lathrop Hall circa 1900.



Lathrop Hall exterior circa 1900

People often look forward with hope and optimism as a new year approaches. They also look backward, measuring progress and noting accomplishments.

Mizzou Weekly's Winter 2000 Semester Calendar gives its readers a look back at what campus life was like in 1900.

The photographs are from a University Archives' online exhibit. For a detailed look, log onto www.system.missouri.edu/archives/1900-.html.

Mizzou in 1900

HOUSING IN 1900

- ◆ Room rent for each student was from \$12 to \$30 a year, according to the location of the room.
- ◆ Permits to the dining room were \$12 a year, but in 1899 and again in 1900, the cooks struck. After an increase in salary each year, the delivery of meals continued uninterrupted.
- ◆ The cost quotes pertain only to men. The costs for women were more expensive.



The Columns circa 1900

Mizzou in 1900

It's difficult to believe, but the Columns were almost torn down. In the years of reconstruction after the fire of 1892, many thought of the Columns as an eyesore, blocking the view of the new buildings being constructed on the Quadrangle. Some even feared the Columns were structurally unsound and a safety hazard.

Among the original opponents of preserving the columns was Curator Gideon F. Rothwell. A local paper reported that Rothwell had ordered two mule teams to tear down and haul off the Columns. Upon seeing this, a leading Columbia citizen, Jerry S. Dorsey, protested their removal.

As the news clipping states, "Mr. Dorsey declared that the Columns could not be pulled down by a herd of elephants, whereupon Mr. Rothwell announced that they were coming down if he had to dynamite them."

The heated argument even progressed to fisticuffs between the two distinguished men. Dorsey obtained a judicial writ that same day which delayed the Columns' destruction. An architect declared that they would be structurally sound, and Rothwell and the other curators soon had a change of heart. In fact, Gideon Rothwell was henceforth instrumental in their restoration.

Concerts & Plays

Thursday, January 27

THEATER SERIES: "New Plays from the Missouri Playwright's Workshop," three short plays by student writers, will be performed at 8 p.m. tonight, Jan. 28-29, and Feb. 3-5, and at 2 p.m. Feb. 6 in the Corner Playhouse. For ticket information, call 882-PLAY.

Saturday, January 29

UNIVERSITY CONCERT SERIES: Jazz composer and recording artist Bobby McFerrin will perform at 7 p.m. in Jesse Auditorium. For ticket information, call 882-3781.

Wednesday, February 2

UNIVERSITY CONCERT SERIES: The musical *Annie* will be performed at 7 p.m. in Jesse Auditorium. For ticket information, call 882-3781.

Thursday, February 3

UNIVERSITY CONCERT SERIES: The Peking Acrobats, an elite group of gymnasts, jugglers, and cyclists, will perform at 7 p.m. in Jesse Auditorium. For ticket information, call 882-3781.

Monday, February 7

UNIVERSITY CONCERT SERIES: The Jim Widner Big Band will perform at 7 p.m. in Jesse Auditorium. For ticket information, call 882-3781.

Thursday, February 10

JAZZ SERIES: Modern jazz ensemble Tony Reedus' Frontiers will perform at 8 p.m. in the Holiday Inn Select Windsor Ballroom. For ticket information, call 882-4640.

Friday, February 11

MUSIC DEPARTMENT RECITAL: Clarinet Chamber Ensemble will perform at 8 p.m. in Whitmore Recital Hall in the Fine Arts Building.

Saturday, February 12

UNIVERSITY CONCERT SERIES: The Big Apple Circus will perform at 7 p.m. in Jesse Auditorium. For ticket information, call 882-3781.

Sunday, February 13

UNIVERSITY CONCERT SERIES: The Alvin Ailey Repertory Ensemble will present an evening of dance at 7 p.m. in Jesse Auditorium. For ticket information, call 882-3781.

Tuesday, February 15

UNIVERSITY CONCERT SERIES: The Music Department Showcase will feature outstanding MU music students who have qualified as emerging artists and have won important music awards at 7 p.m. in Jesse Auditorium. Free to the public, tickets required. For ticket information, call 882-3781.

Wednesday, February 16

MUSEUM MUSIC EVENT: The Klez Dispensers will present "Klezmer Music and Mirth" at 12:15 p.m. in the Museum of Art and Archeology.

Thursday, February 17

THEATER SERIES: *Tartuffe* will be performed at 8 p.m. tonight, Feb. 18-19, and Feb. 24-26, and at 2 p.m. Feb. 27 in Rhynsburger Theatre. For ticket information, call 882-PLAY.

Friday, February 18

UNIVERSITY CONCERT SERIES: Violinist Rachel Barton will perform at 7 p.m. in Jesse Auditorium. For ticket information, call 882-3781.

Thursday, February 24

UNIVERSITY CONCERT SERIES: *Victor, Victoria* will be performed at 7 p.m. in Jesse Auditorium. For ticket information, call 882-3781.

Saturday, February 26

UNIVERSITY CONCERT SERIES: Musical legends The Temptations will perform at 7 p.m. in Jesse Auditorium. For ticket information, call 882-3781.

Thursday, March 2

UNIVERSITY CONCERT SERIES: The Minnesota Orchestra with violin soloist Pinchas Zukerman will perform at 8 p.m. in Jesse Auditorium. For ticket information, call 882-3781.

Saturday, March 4

UNIVERSITY CONCERT SERIES: Luma: Theatre of

Light, a family performance art with illuminated acrobats, colorful sea creatures, and fireworks, will be performed at 7 p.m. in Jesse Auditorium. For ticket information, call 882-3781.

JAZZ SERIES: The Sharp 5 Quintet will present a special performance in honor of Women's History Month at 8 p.m. in Windsor Auditorium at Stephens College. For ticket information, call 882-4640.

Tuesday, March 7

UNIVERSITY CONCERT SERIES: Perlman, Nikkanen and Bailey, a piano, violin and cello ensemble, will perform at

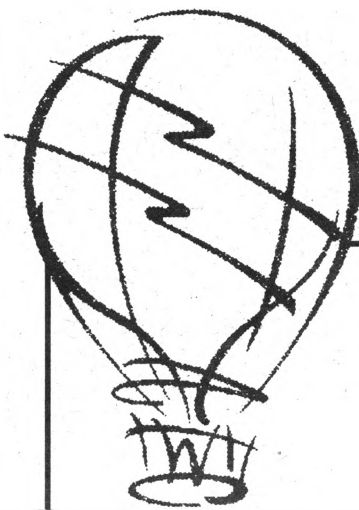
8 p.m. in Jesse Auditorium. For ticket information, call 882-3781.

Saturday, March 11

UNIVERSITY CONCERT SERIES: The Amadeus Trio will perform dynamic selections of chamber music at 8 p.m. in Jesse Auditorium. For ticket information, call 882-3781.

Monday, March 13

HEARNES CENTER EVENT: The eclectic musical quintet 311 will perform with special guest Jimmie's Chicken Shack at 7:30 p.m. at the Hearn Center. For ticket information call 1-800-CAT-PAWS.



Schedule of Courses

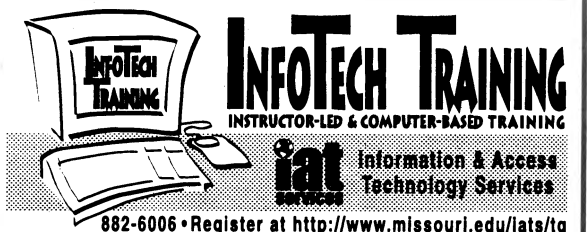
InfoTech Training
Schedule of Courses
Now Online!

<http://www.missouri.edu/iats/tg/>

Expanded Program

- Outlook Calendaring
- MS Office Productivity
- Using CBT's Effectively

Call 882-6006 to Register



882-6006 • Register at <http://www.missouri.edu/iats/tg/>

Tuesday, March 14

THEATER SERIES:

"Somewhere Over the Rainbow: The Songs of Harold Arlen" will be performed at 8 p.m. tonight, Mar. 15-22, and at 2 p.m. Mar. 19 in the Corner Playhouse. For ticket information, call 882-PLAY.

Wednesday, March 15

UNIVERSITY CONCERT

SERIES: Ensemble Galilei will meld elegant chamber music and traditional folk to create a unique Celtic sound in a performance at 8 p.m. in Jesse Auditorium. For ticket information, call 882-3781.

Saturday, March 18

UNIVERSITY CONCERT

SERIES: Missoula Children's Theatre will perform *The Wizard of the West* at 3 and 7 p.m. in Jesse Auditorium. For ticket information, call 882-3781.

Sunday, March 19

JAZZ SERIES: James Williams' All-Star "Magical Trio 2000" will perform at 3:30 p.m. at Murry's, 3107 Green Meadows Way. For ticket information, call 882-4640.

Wednesday, April 5

MUSEUM MUSICAL EVENT:

The Show Me Opera, directed by Eric Dillner, assistant professor of music, will perform "Opera, Arias and Scenes" at 12:15 p.m. in the Museum of Art and Archeology.

Thursday, April 6

UNIVERSITY CONCERT

SERIES: *Hail, Britannia*, a combination of the MU Choral Union and the Columbia Civic Orchestra, will be performed at 8 p.m. in Jesse Auditorium. For ticket information, call 882-3781.

Friday, April 14

JAZZ SERIES: The Tommy Flanagan Trio featuring the legendary jazz pianist will perform at 8 p.m. in Launer Auditorium at Columbia College.

Sunday, April 16

UNIVERSITY CONCERT

SERIES: The Cavani String Quarter, winner of the 1989 Naumburg Award, will perform

at 8 p.m. in Jesse Auditorium. For ticket information, call 882-3781.

Thursday, April 20

THEATER SERIES: *Treasure Island* will be performed at 8 p.m. tonight, Apr. 21-22, and Apr. 26-29, and at 2 p.m. Apr. 23 in Rhynsburger Theatre. For ticket information, call 882-PLAY.

Saturday, April 29

UNIVERSITY CONCERT

SERIES: Classical guitarist Robert Bluestone will perform at 8 p.m. in Jesse Auditorium. For ticket information, call 882-3781.

Tuesday, May 2

UNIVERSITY CONCERT

SERIES: Trinity Irish Dance will perform at 7 p.m. in Jesse Auditorium. For ticket information, call 882-3781.

Thursday, May 11

UNIVERSITY CONCERT

SERIES: The piano duo of Valentina Lisitsa and Alexei Kuznestoff will perform at 8 p.m. in Jesse Auditorium. For ticket information, call 882-3781.

Saturday, May 13

UNIVERSITY CONCERT

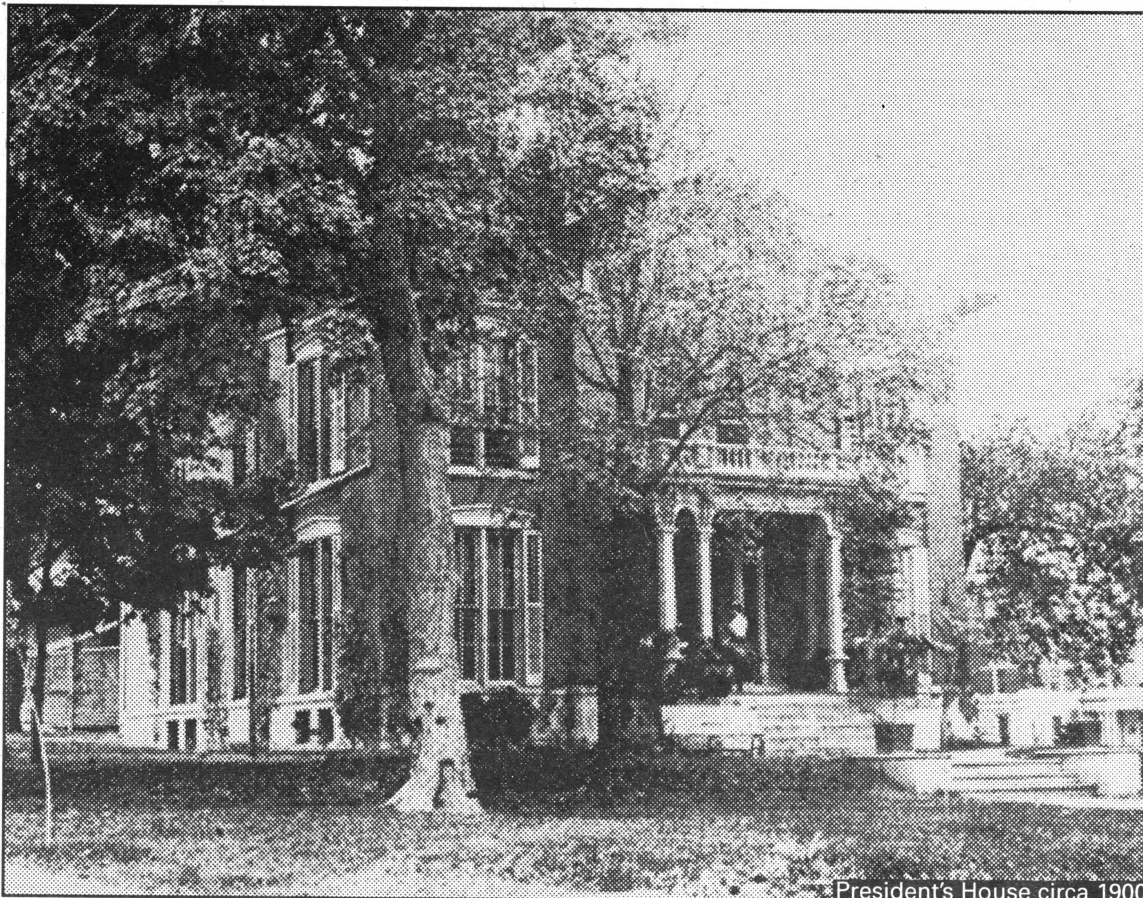
SERIES: Comedian Bob Newhart will perform at 8 p.m. in Jesse Auditorium. For ticket information, call 882-3781.

Conferences

Wednesday, February 2

TEACHING RENEWAL CONFERENCE:

This annual event to promote teaching excellence at MU begins today from 12:30-5 p.m. and continues Feb. 3 and 4 from 8-4 p.m. in Memorial Union. The conference features dozens of teaching workshops by MU faculty and national experts, a teaching resource fair and a reception for MU's outstanding teachers. Registration is required; call the Program for Excellence In Teaching at 882-6260, or visit the conference web site at: www.missouri.edu/~petwww



President's House circa 1900



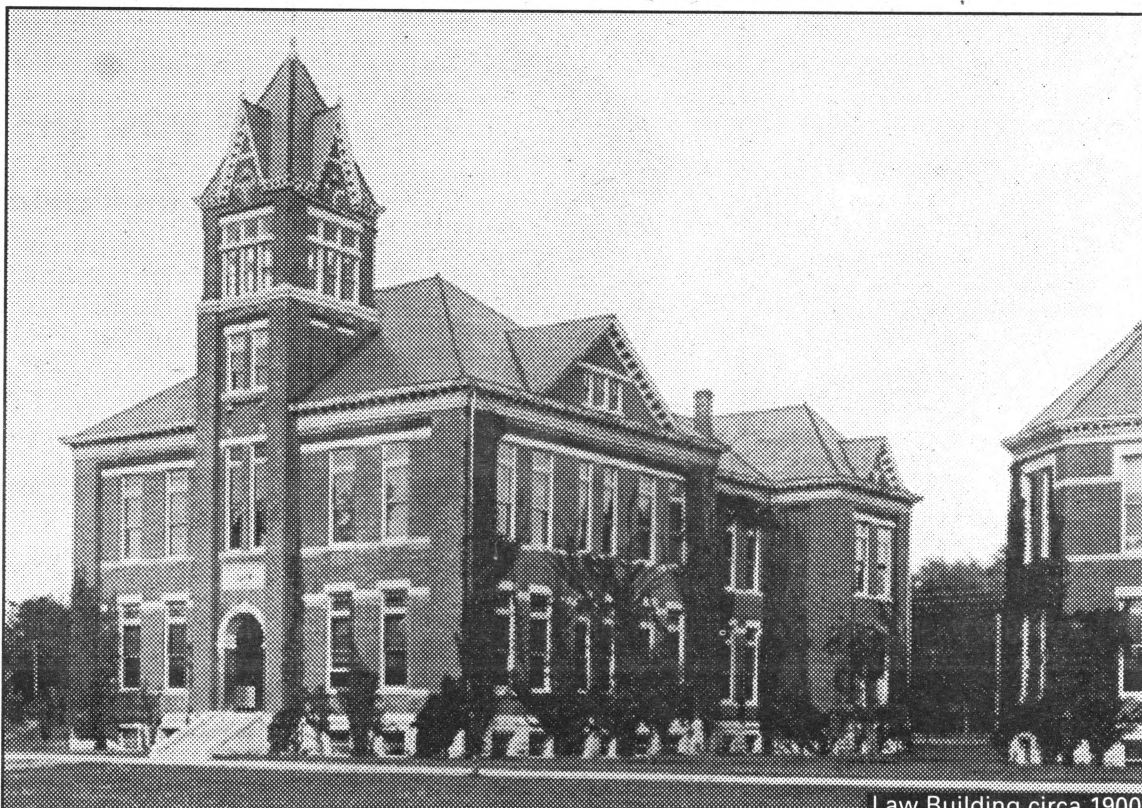
Power House circa 1900

Mizzou in 1900

CAMPUS TOURS Visitors walking around campus at the turn of the century would see:

- ◆ club houses or dormitories
- ◆ an observatory
- ◆ agriculture buildings
- ◆ the experiment station
- ◆ a greenhouse
- ◆ the Law Building
- ◆ chemistry laboratory
- ◆ president's house
- ◆ a museum
- ◆ the colleges of agriculture and engineering
- ◆ the Mechanics Arts Building
- ◆ the Power House
- ◆ Academic Hall (now called Jesse Hall)
- ◆ the Medical Building
- ◆ Parker Hospital

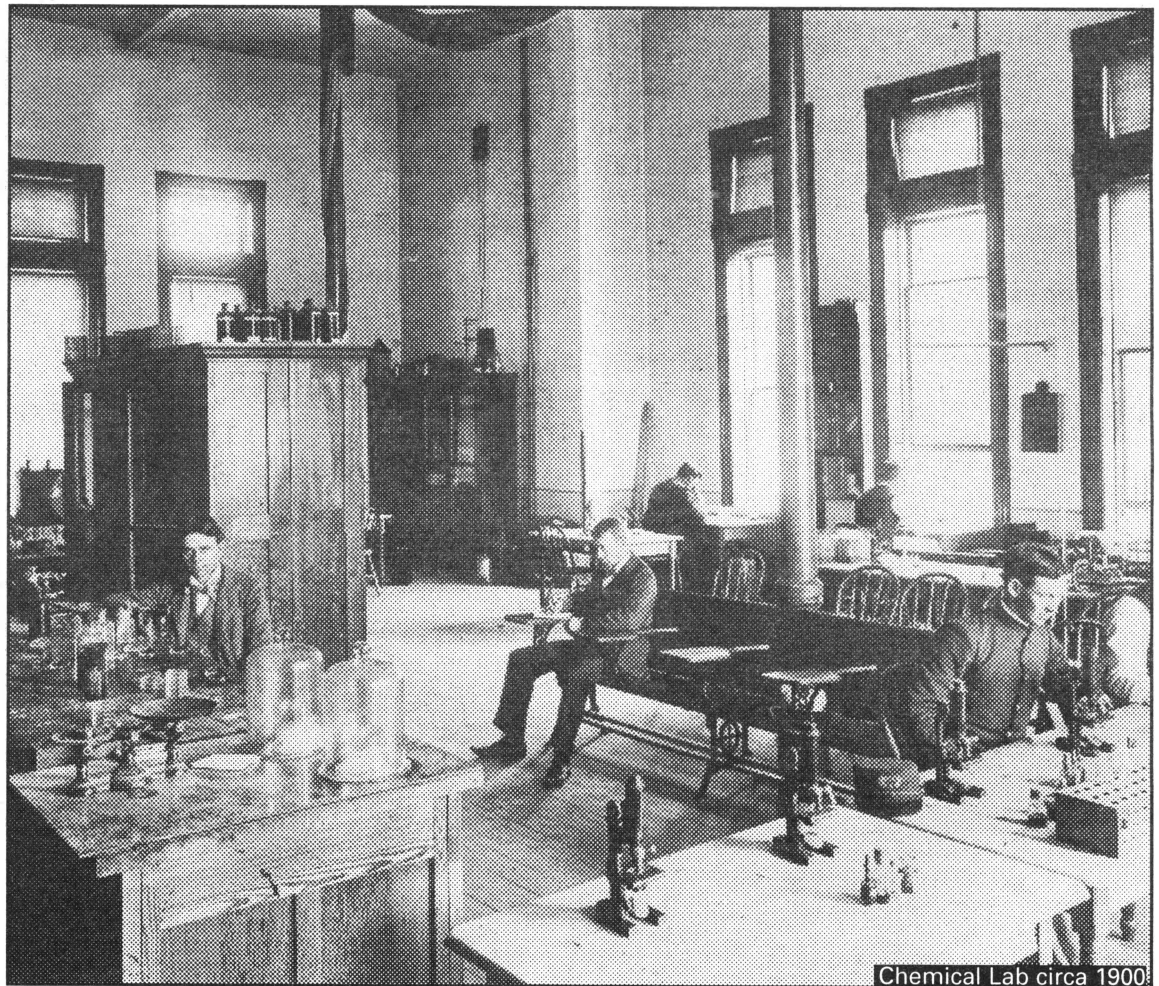
Nine of these buildings were built in the 10 years before the turn of the century and several in the year 1900.



Law Building circa 1900

Mizzou in 1900

- ◆ There were more than 1,300 students enrolled in the 1900-1901 academic year.
- ◆ They came from a total of 52 states, territories and countries. One student was from Cuba, one from New Zealand, four from Argentina and 24 from Kansas.
- ◆ For those graduating in 1900, the average age of the students was 24 years and one month. The oldest was 30; the youngest was 19.



Chemical Lab circa 1900

FRESH AIR The efficient exhaust ventilation system in this Chemical Lab changed the air every 10 minutes.

Thursday, February 3

ENVIRONMENTAL QUALITY CONFERENCE: "Global Climate Change and Agro-Environmental Policies: Millennium Challenge" will be held from 8 a.m.-5 p.m. in Reynolds Alumni Center. For more information and registration, call 882-7458, or visit www.cares.missouri.edu/meqc/index/html.

Monday, February 21

CARDIOVASCULAR CONFERENCE: Cardiovascular Day VII will be held from 8:30 a.m.-4:45 p.m. in the Veterinary Medicine Building conference center. For more information, call 882-8059.

Thursday, February 24

MEDICINE&RELIGION CONFERENCE: "Holistic Care as We Age: Understanding the Relationship Between the Physical and Spiritual Dimensions" will be held from 8 a.m.-4:30 p.m. at Lenoir Community Center in Columbia. For cost and registration, call 882-7373.

Thursday, March 9

NURSING CONFERENCE: "Priorities and Preparation for Advanced Practice Nurses: Essential Clinical Review" will be held from 7:45 a.m.-5:30 p.m. today, 8 a.m.-6 p.m. Mar. 10, and 8-11:30 a.m. Mar. 11 at the Holiday Inn East in Columbia. For cost and registration, call 882-0215.

Courses

CHILDBIRTH CLASSES:

- ◆ "Beginning Childbirth," held in University Physicians Medical Building, 1101 Hospital Drive, should be started three months before your baby is due. Cost: \$45. For more information or registration, call 882-6973.
- ◆ "Childbirth Preparation Classes" will be held from 6:30-8:30 p.m. at the Fayette Medical Clinic, 308 S. Church St. Cost: \$25. Registration required, call (660) 248-2217.

HEALTH CONNECTION EXERCISE CLASSES:

- ◆ "Body Strengthening Class" is held at 8:30 a.m. on Mondays, Wednesdays and Fridays and 12:45 p.m. or 5:30 p.m. Tuesdays and Thursdays.

- Registration is required.
- ◆ "Step Classes" are held at 6:30 p.m. on Mondays and 4:30 p.m. Tuesdays and Thursdays.
 - ◆ "Yoga Classes" are held at 11:15 a.m. Tuesdays, 6:30 p.m. Thursdays, and 10 a.m. Saturdays.
 - ◆ "Stretch and Relax Class" is presented at 4:30 p.m. on Mondays.
 - ◆ "Cardio-Kickboxing" is presented at 6:30 p.m. Tuesdays, and 8 a.m. Thursdays and Saturdays.

Thursday, January 27

ACCOUNTING SERVICES CLASS: "Travel Preparation and Reimbursement," with a prerequisite of Account Types and Subcodes, will be presented from 9 a.m.-noon today, Feb. 24, Mar. 23, Apr. 27 and May 25 in the second-floor conference room in Turner Avenue garage. Registration is required, call 882-3051 or visit www.missouri.edu/~muacct/training.htm.

Saturday, January 29

MUSEUM WORKSHOPS: "Red and Black Pottery" will be held from 2-4 p.m. in A118 Fine Arts Building. Open to children ages 7-17. For cost and registration, call 882-3591 by Jan. 24.

Wednesday, February 2

EMPLOYEE ASSISTANCE WORKSHOP: "Budgeting for Both Today and Your Dreams"

will be presented from 5:30-7 p.m. in 119 Parker Hall. Registration required, call 882-6701.

FITNESS COURSE:

"Shapedown, a Family Weight-Management Program" will begin at 6:30 p.m. in the Cosmopolitan International Diabetes Center Classroom at University Hospital. For cost and registration, call 882-7978.

INFANT SAFETY COURSE:

"Infant Safety/CPR" will be presented from 7-9 p.m. in Room 608, University Hospital and Clinics. Cost: \$30. Registration is required, call 882-6973.

Thursday, February 3

ACCOUNTING SERVICES CLASS: "Basic Form Preparation," with a prerequisite of Account Types and Subcodes, will be presented from 9-11:30 a.m. today and April. 6 in the second-floor conference room in Turner

Avenue garage. Registration is required, call 882-3051 or visit www.missouri.edu/~muacct/training.htm.

RADIATION SAFETY

COURSE: "Radiation Safety at MU-New Radiation Workers" will be presented from 1-3:30 p.m. today, Mar. 2, Apr. 6, May 4 and June 1 in the Environmental Health and Safety classroom in the Research Park Development Building. Registration is required, call 882-7018.

LIBRARY DATABASE

WORKSHOP: A workshop on searching the MEDLINE database will be presented from 3:30-5 p.m. today and Apr. 5, and from 10-11:30 a.m. Mar. 7 and May 3 in 126 Health Sciences Library. For more information, call 882-6141.

Tuesday, February 8

HAZARDOUS MATERIALS CLASS: "Hazardous Materials Awareness" will be presented

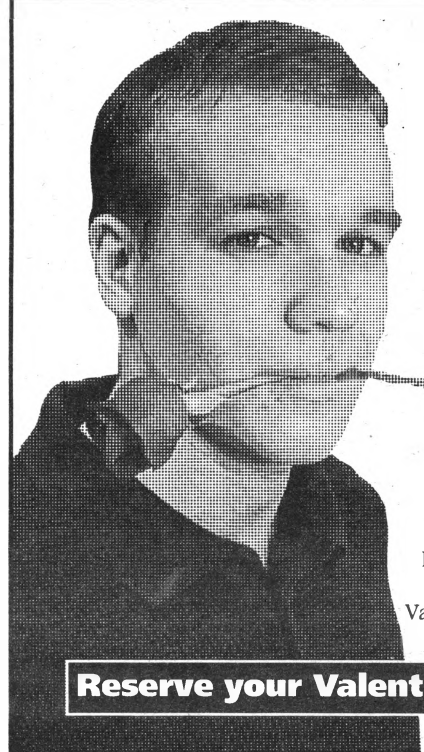
today from 9-11 a.m., and again from 1:30-3:30 p.m. April 12 and June 20 in the Environmental Health and Safety classroom in the Research Park Development Building. Registration is required, call 882-7018.

Wednesday, February 9

EMPLOYEE ASSISTANCE WORKSHOP: "Making Credit Work for You" will be presented from 5:30-7 p.m. in 119 Parker Hall. Registration is required, call 882-6701.

MIZZOU TELECOM CLASSES:

- ◆ "Using Telephone Features Effectively" will be held from 9-11 a.m. today, Mar. 8, Apr. 12, May 10 and June 14 in 215 Telecom Building. Registration is required, call 882-2090.
- ◆ "Using Voice Mail Effectively" will be held from 1:30-3:30 p.m. today, Mar. 8, Apr. 12, May 10 and June 14 in 215




Will you be a lover this Valentine's Day?

Select from eight fresh rose arrangements starting at \$12.95.

All lovingly delivered free to any MU campus address. Store pick up available.



An exciting partnership between University Bookstore and the MU Department of Horticulture.

inside
University Bookstore
Main Level Brady Commons 

Feb. 4:

Deadline to order Valentine's Day Roses.

Feb. 8:

Sweet Tooth Taste Test. Sample four candy bar samples and register to win a GIGANTIC 9.25lb. Nestle's Crunch Bar.

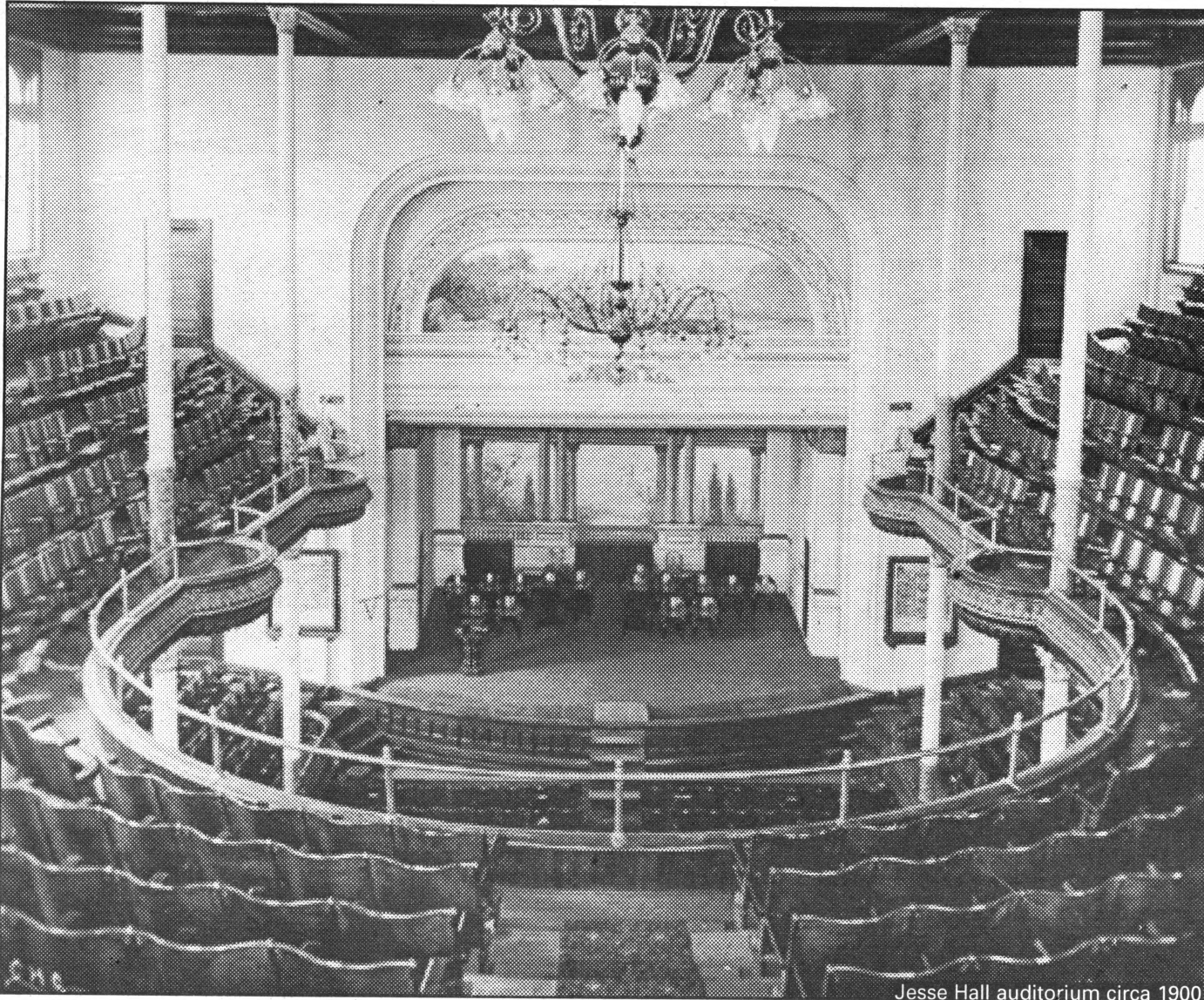
Starting Feb. 9:

Four free roses (delivered) with any Cool Water or JOOP purchase (while supplies last).

Feb. 14:

The big day! Last minute shoppers save 10% off all sportswear that includes the color red.

Reserve your Valentine's Day roses by Feb. 4th. Call 882-7611 or stop by the store.



Jesse Hall auditorium circa 1900

CULTURAL LIFE One wing of Jesse Hall contained an auditorium for education and entertainment. This was replaced in 1950.

Mizzou in 1900

In the early days of 1900, William Jennings Bryan, American statesman, lawyer and presidential candidate, delivered a lecture in the University auditorium titled "Pending Problems." He donated the proceeds from this lecture to create a fund to support the publication of the *Savitar*.

This was not his first act of generosity toward the University. Three years earlier, the William Jennings Bryan prize was established for the best essay on government. The prize consisted of \$17.50 in money or a medal of equivalent value.

There were some unusual instructions for those entering the contest: each essay was to be signed with a fictitious name and accompanied with a sealed envelope containing the real name of the writer and bearing the fictitious name on the outside. The 1900 recipient was junior law student E.F. Cameron Jr.

Telecom Building. Registration is required, call 882-2090.

Thursday, February 10

LIBRARY DATABASE

WORKSHOP: A workshop on searching the Cumulative Index of Nursing and Allied Health Literature will be presented from 3:30-5 p.m. today and Apr. 11, and from 10-11:30 a.m. Mar. 15 and May 17 in 126 Health Sciences Library. For more information, call 882-6141.

Friday, February 11

ACCOUNTING SERVICES

CLASS: "Account Types and Subcodes" will be presented from 9-11:30 a.m. today, Mar. 2, Apr. 14 and May 4 in the conference room in Turner Parking Office. Registration is required, call 882-3051 or visit www.missouri.edu/~muacct/training.htm.

Monday, February 14

HUMAN RESOURCES

WORKSHOP: "Legal Responsibilities of Supervisors-Part 1" will be presented from 1-4 p.m. in S203 Memorial Union. Registration is required, call 882-2603.

Tuesday, February 15

HUMAN RESOURCES

WORKSHOP: "Basic Self Defense" will be presented from 9-11:30 a.m. in 146 Heinkel Building. Registration is required, call 882-2603.

RELAXATION CLASS: "Success with Stress" will be presented from 1-2 p.m. today, Feb. 22 and 29 in the Health Information Center, Columbia Mall. Cost: \$10. To register, call 882-6565.

ET@MO WORKSHOP:

"Student Support Services" will be held from 2-3:30 p.m. in N208 Memorial Union. It also will be held Apr. 13 from 2-3:30 p.m. in N222/223 Memorial Union. For registration, call 882-3303.

Wednesday, February 16

ET@MO WORKSHOP:

"Intellectual Property Rights/Copyright" will be held from 2-3:30 p.m. in N222/223 Memorial Union. It will also be held Apr. 11 from 2-3:30 p.m. in S203 Memorial Union. For registration, call 882-3303.

Thursday, February 17

PROCUREMENT CLASS:

"Purchasing Fundamentals for Department Staff" will be held from 8 a.m.-noon at 1105 Carrie Francke Drive. Registration is required, call 882-5054.

Tuesday, February 22

ET@MO WORKSHOP:

"Internet Interaction" will be held from 2-3:30 p.m. in N222/223 Memorial Union. It also will be held Apr. 12 from 2-3:30 p.m. in S203 Memorial Union. To register, call 882-3303.

NUTRITION CLASS: "Steps for Success-Living Lean for Life" will be presented at 4:30 p.m. in the Cosmopolitan International Diabetes Center Classroom at University Hospital. For more information, call 882-2251 or 882-9712.

Wednesday, February 23

EMPLOYEE ASSISTANCE

WORKSHOP: "Making the 403(b) Retirement Advantage Work for You" will be presented from 5:30-7 p.m. in 119 Parker

Hall. Registration is required, call 882-6701.

Thursday, February 24

LIBRARY DATABASE

WORKSHOP: A workshop on searching the PsychINFO database will be held from 3:30-5 p.m. today and Mar. 22, and from 10-11:30 a.m. Apr. 25 and May 31 in 126 Health Sciences Library. For more information, call 882-6141.

Wednesday, March 1

HUMAN RESOURCES

WORKSHOP: "Providing Great Customer Service" will be presented from 1-4 p.m. in S203 Memorial Union. Registration is required, call 882-2603.

Thursday, March 9

PROCUREMENT CLASS:

"Specifications Writing" will be held from 8 a.m.-noon at 1105 Carrie Francke Drive. Registration is required, call 882-5054.

Monday, March 13

RADIATION SAFETY

COURSE: "Radioisotope Workshop (NE 302)" today-Mar. 17 from 12:30-4:30 p.m., and June 19-23 from 8 a.m.-noon in the Environmental Health and Safety classroom in the Research Park Development Building. Registration is required, call 882-7018.

Wednesday, March 15

HUMAN RESOURCES

WORKSHOP: "Problem Solving: Tools and Techniques" will be presented from 8 a.m.-noon in S203 Memorial Union.



Parking & Transportation Services

Turner Avenue Garage

Level 2

882-4568

Maryland Avenue will close between Turner Avenue and Rollins, Monday, January 24th. A 3-way stop sign will be installed at Missouri Avenue and Rollins. Please use caution in the area.

web.missouri.edu/~mubs/parking/parking.html

Registration is required, call 882-2603.

Wednesday, March 22

HUMAN RESOURCES WORKSHOP: "Coping with Difficult People" will be presented from 9 a.m.-noon in S203 Memorial Union. Registration is required, call 882-2603.

Monday, April 3

HUMAN RESOURCES WORKSHOP: "Legal Responsibilities of Supervisors-Part 2" will be presented from 1-4 p.m. in S203 Memorial Union. Registration is required, call 882-2603.

Tuesday, April 4

UNIVERSITY BENEFITS WORKSHOP: "Preparing for Retirement," a four-part seminar, begins from 7-9 p.m. today in 110 Lee Hills Hall and continues April 11, 18, and 25. Registration is required, call 882-2603.

Thursday, April 6

HUMAN RESOURCES WORKSHOP: "Basic Supervision" will be presented from 9 a.m.-4 p.m. in S16 Memorial Union. Registration is required, call 882-2603.

Saturday, April 8

MUSEUM WORKSHOP: "Patchwork: Portraits of Ourselves" will be held from 2-4 p.m. in the Davis Gallery at Stephens College. Open to children ages 7-12. For cost and registration information, call 882-3591 by April 3.

Tuesday, April 11

HUMAN RESOURCES WORKSHOP: "Non-Verbal Communication in the Workplace" will be presented from 9 a.m.-noon in S203 Memorial Union. Registration is required, call 882-2603.

Saturday, April 15

MUSEUM WORKSHOP: "Patchwork: Portraits of Ourselves" will be held from 2-4 p.m. in A131 Fine Arts Building. Open to children ages 7-12. For cost and registration information, call 882-3591 by Apr. 3.

Wednesday, April 19

UNIVERSITY BENEFITS WORKSHOP: "Financial Planning for Retirement" will be presented from 9 a.m.-3 p.m. in 146 Heinkel Building. Registration is required, call 882-2603.

Friday, April 21

UNIVERSITY BENEFITS WORKSHOP: "Tax Deferred Annuities" will be presented from 9-11 a.m. today and May 2 in 146 Heinkel. Registration is required, call 882-2603.

Tuesday, May 9

HUMAN RESOURCES WORKSHOP: "21st Century Stress Management" will be presented from 9 a.m.-3:30 p.m. in S203 Memorial Union. Registration is required, call 882-2603.

Thursday, May 11

FIRE SAFETY COURSE: "Fire Extinguisher Safety" will be presented today and June 8 from 8-10 a.m. in the Environmental Health and

Safety classroom in the Research Park Development Building. Registration is required, call 882-7018.

Exhibits

ART FOR LIFE: Watercolors by Jane Anne Gideon, pastels by Sue Van Buren and bronze sculptures by Charles Strain are on display in the lobbies of University Hospital and Clinics and Ellis Fischel Cancer Center through March 27. A children's art show also is on display at University Hospital.

BRADY GALLERY:

◆ "Ceramics" by Shannon Ward is on display through Jan. 20.
◆ "Ceramics and Prints" by Martin Cox is on display Jan. 24-Feb. 3.

Brady Commons Gallery hours are 10 a.m.-5 p.m. Monday-Friday. Beginning Jan. 24 additional hours are 10 a.m.-4 p.m. Saturday, and 1-5 p.m. Sunday.

GEORGE CALEB BINGHAM GALLERY:

"Annual Graduate Exhibition," works by current graduate students majoring in Art or Art Education, will be on display through Feb. 4. The Bingham Gallery is located in the Fine Arts Building.

MUSEUM OF

ANTHROPOLOGY: The museum's exhibits focus on Native American cultures and the history and prehistory of Missouri. The museum, located at 100 Swallow Hall, is open from 9 a.m.-4 p.m. Monday to Friday.

MUSEUM OF ART AND ARCHAEOLOGY:

Special Exhibits:

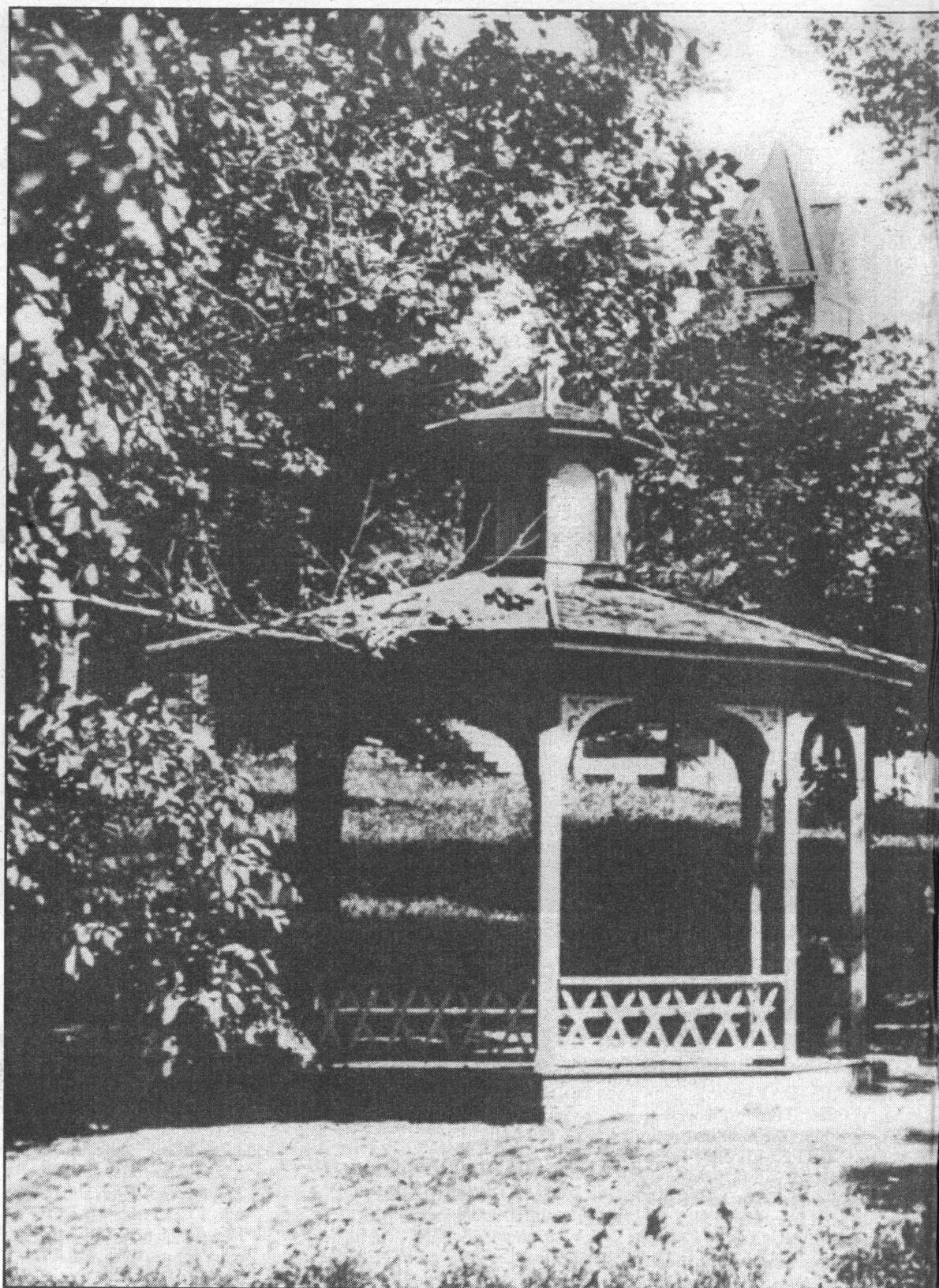
- ◆ "The Greek Symposium" is on display until Feb. 6
- ◆ "Los Caprichos" is on display until April 16.
- ◆ "Faith Ringgold: Her Story in Text and Image" is on display through May 21.
- ◆ "Wrapped Creatures: Animal Mummies from Egypt" is on display through Aug. 27.
- ◆ "Jaguar's Realm: Ancient Art from Mexico to Peru" is on display through 2000.
- ◆ "In a Favored Light: Contemporary Russian Impressionist Painting" will be on display Jan. 25-June 11.
- ◆ Greek and Roman Crafts: Metalwork, Textiles and Pottery" will be on display Feb. 8-May 14.
- ◆ "Prints from Rubens' Medici Cycle" will open May 6.

The museum, located in Pickard Hall, is open from 9 a.m.-5 p.m. Tuesday-Friday, 6-9 p.m. Thursday and noon-5 p.m. Saturday and Sunday.

ROGERS GALLERY: "Home Alone in the Middle of the Day," photographs by Deanna Dikeman, is on display until Feb. 11. The gallery, located in Stanley Hall, is open from 9 a.m.-5 p.m. Monday-Friday. A reception will be held in the gallery from 4-6 p.m. Jan. 28.

STATE HISTORICAL SOCIETY:

◆ Watercolors and drawings by wildlife artist Charles W. Schwartz is on display through the end of April. The gallery is open from 8:30 a.m.-4 p.m. Monday-



Chalybeate Spring circa 1900

Friday and is closed on Saturday.

- ◆ "Rare Maps from the Collection of the State Historical Society" is on display in the north-south corridor.
- ◆ "Decades: 1899 to 1969, Editorial Cartoons" is on display in the east-west corridor.

The corridors are open from 8 a.m.-4:30 p.m. Monday-Friday and 9 a.m.-4:30 p.m. Saturday.

UNIVERSITY ARCHIVES: "Y1.9K: Mizzou in 1900" is a special online exhibit for the millennium. Visit www.system.missouri.edu/archives and follow the millennium link to see what was happening at Mizzou at the turn of the century.

Lectures & Seminars

Thursday, January 27

INTERNATIONAL AFFAIRS SEMINAR: Andrew Twaddle, professor of sociology, will present "Is the Swedish Model Dead?" at noon in S-16 Memorial Union.

Monday, January 31

JOURNALISM SEMINAR: George Kennedy, professor of journalism and managing editor of the *Columbia Missourian*, will present "A New *Missourian* for the New Millennium" at noon in Tucker Forum in Gannett Hall.

BIOCHEMISTRY SEMINAR: Martin Stone, assistant professor of biochemistry at Indiana University-Bloomington, will present "Molecular Recognition in Chemical Communication" at 3:30 p.m. in 103 Schlundt Hall.

SOIL & ATMOSPHERIC SCIENCES LECTURE: Patrick Market, assistant professor of soil and atmospheric sciences, will present "Jet Streak Dynamics and the Influence of Diabatic Heating" from 4-4:50 p.m. in 123 Anheuser-Busch Natural Resources Building.

Wednesday, February 2

MIDDAY GALLERY EVENT: Gary Kramer, professor of history at William Woods University, will present "The World We Have Lost: African-American Community Life in

Jim Crow Missouri" at 12:15 p.m. in the Museum of Art and Archeology.

Thursday, February 3

INTERNATIONAL AFFAIRS SEMINAR: Byron Scott, professor of journalism and director of the School of Journalism's international programs office, will present "Journalism Around the World" at noon in S-16 Memorial Union.

CHEMICAL ENGINEERING LECTURE: John Kardos from Washington University will present "Injected Pultrusion for Low-Cost Manufacturing of Composites" at 3:30 p.m. in Ketcham Auditorium in Engineering Building East.

LAW AND GENETICS LECTURE: Mark Rothstein, professor of law and director of the Health Law and Policy Institute at the University of Houston, will present "Ethical and Legal Implications of Behavioral Genetics" from 3:30-5 p.m. in Room 6 Hulston Hall.

NUTRITIONAL SCIENCES LECTURE: Raad Gitan, post doctoral associate in nutritional sciences, will present

"Regulation of Nutrient Transporter Protein Trafficking" at 4 p.m. in 209 Gwynn Hall.

Monday, February 7

SOIL & ATMOSPHERIC SCIENCES LECTURE: Charles Nilon, associate professor of fisheries and wildlife, will present "Changes in Bird Species Composition, Baltimore, Md., 1966-94" at 4 p.m. in 123 Natural Resources Building.

ARCHAEOLOGY LECTURE: Shelley Wachsmann, assistant professor of biblical archaeology at Texas A&M University, will present "Tantara Lagoon, Israel: Revealing Four Millennia of Seafaring History" at 5:30 p.m. in the Museum of Art and Archeology. A public reception will precede at 5 p.m.

Tuesday, February 8

NUTRITION LECTURE: Dietician Terri Jo Oetting will present "Functional Foods" from noon-12:30 p.m. and 12:45-1:15 p.m. in the Main Street Conference Room at University Hospital.

Wednesday, February 9

MIDDAY GALLERY EVENT: Charles Timberlake, professor of history, will present "Illegal or Unofficial: Impressionist Art in the Soviet Union" at 12:15 p.m. in the Museum of Art and Archeology.

JAZZ SERIES LECTURE: Jimmy Katz will discuss his work as a photographer for Blue Note Records at 7 p.m. in Fisher Auditorium at Gannett Hall. An exhibit of Katz' work is on display in the downtown lobby of Boone County National Bank through March 3.

Thursday, February 10

INTERNATIONAL AFFAIRS SEMINAR: Winn Burrgraaff, professor of history, will present "Venezuela: An Update on Drugs and Democracy" at noon in S-16 Memorial Union.

NUTRITIONAL SCIENCES LECTURE: Steven Clarke from the Institute of Cellular and Molecular Biology at the University of Texas will present "Diet-Gene Interaction: Nutrition's Cornucopia" at 4 p.m. in 209 Gwynn Hall.

Friday, February 11

HEALTHY AGING SEMINAR: Richard Oliver, director of the School of Health Related Professions, will present "Global Health-Care Issues" at 10 a.m. at the Columbia Senior Center, 1121 Business Loop 70.

Monday, February 14

SOIL & ATMOSPHERIC SCIENCES LECTURE: Jason Wiedenmann, graduate student in soil and atmospheric sciences, will present "The Interannual Variability of Blocking Anticyclones" at 4 p.m. in 123 Natural Resources Building.

Tuesday, February 15

NUTRITION LECTURE: Dietician Terri Jo Oetting will present "Nutritional Advice Your Heart Will Love" at 10:30 a.m. at the Health Information Center in Columbia Mall.

Wednesday, February 16

REFRACTIVE SURGERY LECTURE: John Cowden, professor and chair of ophthalmology, will present "Refractive Surgery for Nearsightedness" from 6-7 p.m. in the Main Street Conference

Room at University Hospital. Registration is required, call 882-5935.

Thursday, February 17

INTERNATIONAL AFFAIRS SEMINAR: Danny Wedding, director of Missouri Institute of Mental Health, will present "Mental Health Treatment in a Buddhist Society" at noon in S-16 Memorial Union.

NUTRITIONAL SCIENCES LECTURE: Henry Lukaski, USDA Agricultural Research Service, will present "Creatine-Ergogenic Aid and Therapeutic Agent" at 4 p.m. in 209 Gwynn Hall.

Friday, February 18

MUSEUM LECTURE: Susan Wood, painting conservator at St. Louis Art Museum, will present "Painting Conservation: The Care and Preservation of Our Collections" at 6 p.m. at the Museum of Art and Archeology. A public reception will precede at 5:15 p.m.

Monday, February 21

SOIL & ATMOSPHERIC SCIENCES LECTURE: Michael Aide from Southeast Missouri State University

Mizzou in 1900

GONE ARE THE DAYS One campus feature that does not exist today is Chalybeate Spring, left.

The mineral spring rose north of the Columns and was surrounded by a pagoda. The spring was a popular attraction and was rumored to have healing properties.

The Board of Curators' executive committee ordered its removal in 1903, as Francis Quadrangle was further developed.

Department of Agriculture, will present "Soils and Geology at Southeast Missouri State University" at 4 p.m. in 123 Natural Resources Building.

Wednesday, February 23

MIDDAY GALLERY EVENT: Jane Biers, curator of ancient art at the Museum of Art and Archeology, will present "Ancient or Modern? Problems of Authenticity in Ancient Art" at 12:15 p.m. in the Museum of Art and Archeology.

Thursday, February 24

NUTRITIONAL SCIENCES LECTURE: Joanne Slavin from the University of Minnesota-Twin Cities, will present "Chemopreventive Properties of Flax" at 4 p.m. in 209 Gwynn Hall.

Monday, February 28

SOIL & ATMOSPHERIC SCIENCES LECTURE: James Moore from St. Louis University will present "The Isentropic Omega Equation" at 4 p.m. in 123 Natural Resources Building.

Wednesday, March 1

MIDDAY GALLERY EVENT: Jo Stealey, associate professor of art, will present "Twentieth-Century Art Through the Eyes of Faith Ringgold" at 12:15 p.m. in the Museum of Art and Archeology.

Monday, March 6

MOLECULAR BIOLOGY LECTURES: ◆ A scientist from Monsanto Life Sciences Company will present "Methods of Gene Discovery and Inferring Gene Function" from 1-3 p.m. in Reynolds Alumni Center.

◆ Leroy Hood, from the Institute for Systems Biology in Seattle, will present "Genomics, Proteomics, and Systems Biology" at 3:30 p.m. in Conservation Hall in the Natural Resources Building.

SOIL & ATMOSPHERIC SCIENCES LECTURE: Nadia Navarrete-Tindall, a post doctoral fellow in agronomy, will present "Effect of Shade on Nitrogen Fixation of Forage Legumes" at 4 p.m. in 123 Anheuser-Busch Building.

Tuesday, March 7

MOLECULAR BIOLOGY LECTURES:

◆ Gary Johnson, associate professor of veterinary pathobiology, will present "Real-time Quantitative PCR and RT-PCR" from 10 a.m.-noon in 316 Connaway Hall.

◆ Company representatives from Nissei Sangyo America, Ltd. and EMITECH, LTD. will present "FESEM and Cryopreservation at the EMC." Reservations required, e-mail TindallR@missouri.edu.

Wednesday, March 8

MIDDAY GALLERY EVENT:

Laurel Wilson, associate professor of textile and apparel management, will present "Fiber to Fabric" at 12:15 p.m. in the Museum of Art and Archeology.

MOLECULAR BIOLOGY

LECTURE: Jack Strominger from Harvard University will present "Class II MHC-Encoded Proteins and Autoimmune Diseases" at 3:30 p.m. in Conservation Hall in the Natural Resources Building.

Friday, March 10

MOLECULAR BIOLOGY LECTURES:

◆ Sydney Kustu from the University of California-Berkeley and MU faculty will discuss various issues concerning "Women in Science" from 10-11:30 a.m. in Reynolds Alumni Center.

◆ Gary Comstock from Iowa State University and MU faculty will discuss "What's the (Ethical) Problem with Genetically Modified Foods?" from 1-2:30 p.m. in Reynolds Alumni Center.

◆ Sydney Kustu from the University of California-Berkeley will present "Biochemical and Physiological/Genomic Studies of Nitrogen Signaling in Enteric Bacteria" at 3:30 p.m. in Conservation Hall, Natural Resources Building.

Monday, March 13

SOIL & ATMOSPHERIC SCIENCES LECTURE:

David Schultz from the National Severe Storms Laboratory will present "Fire and Ice: The Seventh Anniversary of the March 1993 Superstorm" at 4 p.m. in 123 Natural Resources Building.

ARCHAEOLOGY LECTURE:

Danielle Parks, visiting assistant professor of art history and archeology, will present "Excavations at Kourin, Cyprus: Past and Present" at 5:30 p.m.

the Museum of Art and Archeology. A public reception will precede at 5 p.m.

Wednesday, March 15

MIDDAY GALLERY EVENT:

Patricia Podzorski, assistant director of the Museum of Art and Archeology, will present "Artists in the Place of Truth" at 12:15 p.m. at the museum in Pickard Hall.

Thursday, March 16

CAMPUS WRITING PROGRAM DISCUSSION:

"The (Science) Revolution that Didn't Happen" will be discussed at 4 p.m. in 113 Arts & Science Building. Moderator John Kultgen, professor of philosophy, will lead panelists Andrew Melnyk, professor of philosophy, Don Sievert, professor of philosophy, and George Smith, professor of biology.

Monday, March 20

SOIL & ATMOSPHERIC SCIENCES LECTURE:

Chuan Lun Zhang, assistant professor of geological sciences, will present "Iron Biomineralization by Thermophilic Bacteria from the Deep Subsurface" at 4 p.m. in 123 Natural Resources Building.

Wednesday, March 22

MIDDAY GALLERY EVENT:

Carla Waal Johns, professor emerita of theater, will present "Harriet Bosse: The Actress as Muse and Artist" at 12:15 p.m. in the Museum of Art and Archeology.

Thursday, March 23

NUTRITIONAL SCIENCES

LECTURE: Mark McIntosh, professor of molecular microbiology and immunology, will present "Secretion and Retrieval of Bacterial Iron Chelators" at 4 p.m. in 209 Gwynn Hall.

Monday, April 3

SOIL & ATMOSPHERIC

SCIENCES LECTURE: Erik Loehr, assistant professor, and John Bowers, associate professor, both in the Department of Civil and Environmental Engineering, will present "Earth Slope Stabilization with Recycled Plastic Pins" at 4 p.m. in 123 Natural Resources Building.

Thursday, April 6

NUTRITIONAL SCIENCES

LECTURE: Vadim N. Gladyshev from the Department of Biochemistry at the University of Nebraska-Lincoln, will present "Mammalian Selenocysteine-Containing Proteins: Role in Cancer Prevention and Redox Signaling" at 4 p.m. in 209 Gwynn Hall.

Monday, April 10

SOIL & ATMOSPHERIC

SCIENCES LECTURE: Phillip Smith from Purdue University will present "The Zwack-Okossi Equation: A Tool for Diagnosing Cyclone Development" from 4-4:50 p.m. in 123 Anheuser-Busch Natural Resources Building.



Men's Gymnasium circa 1900

FLIP-FLOP Rooms in Jesse Hall were set aside for gymnasia. Men were in the basement; women on the second floor.

Mizzou in 1900

MIZZOU ATHLETICS C.W. Hetherington took over as director of athletics in 1900 and was given more authority than his predecessors. The University experimented with a new organization system. Instead of an Athletic Association, the Physical Culture Club was the order of the day. The club consisted of a board of directors, an executive committee (a manager and a treasurer) all from the faculty, and a student manager.

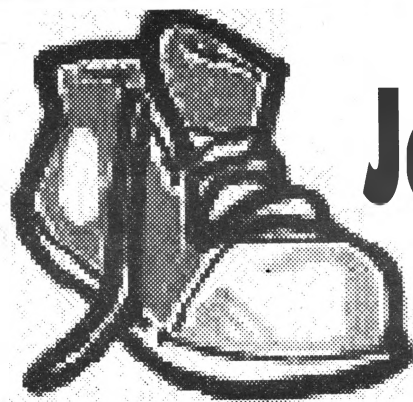
Caring

for your life with
The Staff for Life



www.muhealth.org

Take The First Step To Getting MORE PEP!



Join The MU Rec Center!

ONLY \$8.25 per MONTH

monthly rate applies to MU faculty and staff who purchase a FY00 annual membership
For your convenience stop by our Rec Desk to sign-up for membership or contact Kathy Frerking at 882-0369



1900 football Tigers

Mizzou in 1900

FOOTBALL The ability to choose classes, the diversity of the classes and the increase in the number of students severed the once unified student body. Football, in one historian's opinion, reunified the student body: Everyone was cheering for the same team.

In Missouri, there was a great deal to cheer about on the football field. The *Savitar* describes the 1900 football season as "brilliant in the beginning." It certainly was. In the first seven games, the Tigers amassed 164 points. Their opponents managed 0.

Wednesday, April 12

MIDDAY GALLERY EVENT:

Dale William Fisher, associate museum educator at the Museum of Art and Archeology, will present "Reinterpreting the Word: A Journey in Art Education" at 12:15 p.m. in the museum in Pickard Hall.

Thursday, April 13

NUTRITIONAL SCIENCES

LECTURE: David Harris from Washington University will present "Cell Biological and Transgenic Studies of Prior Diseases" at 4 p.m. in 209 Gwynn Hall. Refreshment will be served at 3:45 p.m.

Monday, April 17

SOIL & ATMOSPHERIC SCIENCES LECTURE:

Internationally known

conservationist and botanist Peter Raven, director of the Missouri Botanical Gardens, will present a lecture in honor of Earth Day at 4 p.m. in Conservation Hall in the Natural Resources Building. A reception will immediately follow.

ARCHAEOLOGY LECTURE:

James Terry, instructor in art history and humanities at Stephens College, will present "Excavations at Aqaba, Jordan, 1994-2000" at 5:30 p.m. in the Museum of Art and Archeology. A public reception will precede at 5 p.m.

Wednesday, April 19

MIDDAY GALLERY EVENT:

Karl Qualls, visiting assistant professor of history, will present "Creating Identity Through the

Soviet Arts" at 12:15 p.m. in the Museum of Art and Archeology.

Thursday, April 20

CHEMICAL ENGINEERING

LECTURE: John Wiencek from the University of Iowa will present "Integral Membrane Protein Crystallization: A Light Scattering Study" at 3:30 p.m. in Ketcham Auditorium in the Engineering Building East.

NUTRITIONAL SCIENCES

LECTURE: Amanda Bird, post doctoral associate in nutritional sciences, will present "Transcriptional Control of Cellular Metal Ion Homeostasis" at 4 p.m. in 209 Gwynn Hall.

CAMPUS WRITING

PROGRAM PANEL DISCUSSION: "DA's, DNA and the Death Penalty:

Monday, April 24

SOIL & ATMOSPHERIC

SCIENCES LECTURE: Jack Jones, professor of fisheries and wildlife, will present "A Resume for Missouri Reservoirs" at 4 p.m. in 123 Natural Resources Building.

Wednesday, April 26

MIDDAY GALLERY EVENT:

William Biers, professor of art history and archaeology, will present "Technology in the Classical World" at 12:15 p.m. in the Museum of Art and Archeology.

Meetings

Thursday, January 27

STAFF ADVISORY COUNCIL:

The council will meet at 1 p.m. today in S206 Memorial Union. The group also will meet at the same time and location on Feb. 10 and 24, March 9 and 23, and May 11 and 25. They will meet at 1 p.m. April 13 in S16 Memorial Union and at 1 p.m. April 27 in S110 Memorial Union.

Thursday, February 10

FACULTY COUNCIL

MEETING: The Faculty Council will meet today at 3:30 p.m. in S203 Memorial Union. Additional meetings will be Feb. 24, Mar. 9, Apr. 6 and Apr. 20.

Tuesday, February 22

GRADUATE FACULTY

SENATE MEETING: The Graduate Faculty Senate Meeting will meet from 3:45-5 p.m. in N208 Memorial Union.

Friday, March 24

GRADUATE FACULTY

SENATE MEETING: The Graduate Faculty Senate Meeting will meet from 3:45-5 p.m. in S214/215 Memorial Union.

Tuesday, April 25

GRADUATE FACULTY

SENATE MEETING: The Graduate Faculty Senate Meeting will meet from 3:45-5 p.m. in S214/215 Memorial Union.

Special Events

EXERCISE AND NUTRITION

PROGRAM: A 12 week program that offers one-on-one support needed to stay on track with weight-loss effort is offered through the Health Connection in Parkade Plaza. For cost and information, call 882-1718.

CANCER SUPPORT GROUP:

Patient and Family Support

1999-2000 "We Always Swing" Jazz Series

3-CONCERT PASS NOW AVAILABLE!

All Three Shows \$51 Pub./\$45 Stu.

Tony Reedus' Fronteirs

Cash bar Cabaret Seating

A Superband with...

Tony Reedus, Drums
John Abercrombie, Guitar
Ravi Coltrane, Saxophones
John Patitucci, Bass

Thursday, February 10
8 p.m.

Holiday Inn Select,
Windsor Ballroom

\$19 Public/\$17 Student
\$14 Jr./Sr. High School

Celebrate Women's History Month...

Sharp 5 Quintet

Saturday, March 4, 8 p.m.
Stephens College, Windsor Aud.

Jamie Baum, Flute
Virginia Mayhew, Saxophones
Roberta Piket, Piano
Nicki Parrot, Bass
Allison Miller, Drums

\$18 Public/\$16 Student
\$14 Jr./Sr. High School

KWWC
90.5 FM

Tommy Flanagan Trio

70th Birthday Tour...
"The Jazz Poet"

Friday, April 14, 8 p.m.
Columbia College,
Launer Auditorium

Tommy Flanagan, Piano
Peter Washington, Bass
Lewis Nash, Drums

\$20 Public/\$18 Student
\$14 Jr./Sr. High School

"MEET JIMMY KATZ"

The Photographs of Jimmy Katz

FREE JIMMY KATZ LECTURE

Photographer Jimmy Katz will discuss his work and share anecdotes Wednesday, February 9, at 7 p.m. Roy Fisher Auditorium, Gannett Hall. Free and Open to the Public.

"We Always Swing" Jazz Series with Boone County National Bank

Boone County National Bank

Special assistance for this Jazz Series Education Project: The City of Columbia Office of Cultural Affairs, Missouri Lottery, Columbia Photo, KOMU TV, TCI

Special Assistance: Vice-Provost Office of Minority Affairs Faculty Development

Ticket Information

Tickets: Available at all **OUTLETS**.
Columbia: Hearnes Center, Streetside Records, The Blue Note, Columbia Mall, Schnucks, MSA Brady Commons Box Office-MU (Student Discount and Student Charges at Brady Commons only)
Jefferson City: Gerbes

Information Only: (573) 882-4640
Charge Line: (573) 884-7297 • (800) 228-7297

www.nationalpastimes.com * E-Mail: jassnbsbl@aol.com



Raymond Solomon

Lecture

What's the Big Idea?: Exploring the Relationship Between Creativity and Global Branding

Beth Ronsick, BJ '89

Affiliate Professor

Beth Ronsick is a Partner and Creative Training Director at Ogilvy & Mather New York. She created her position to serve as a catalyst and agent for change in the areas of agency training, career development and internal communication. She has written print and television ads for clients such as IBM, Reebok, American Express, Kodak and Perrier. Her work has won a number of industry awards and citations.

Thursday, February 10, 2000 6:00 p.m.

Fisher Auditorium, Gannett Hall

Presented by the Advertising Department of the Missouri School of Journalism
University of Missouri - Columbia

Group for Cancer meets from 1:30-2:30 p.m. on Thursdays in the fourth-floor conference room of Ellis Fischel Cancer Center.

Saturday, January 29

EKG SCREENING: An easy 10-minute EKG test can be done today and results will be mailed to you in a reduced wallet sized card with a cardiologist's interpretation. Tests are available from 10 a.m.-2 p.m. in the Health Information Center at Columbia Mall. Cost: \$20. For information and appointments, call 882-6565.

Monday, January 31

AG SCIENCE WEEK: Ag Science Week 2000 begins today and continues through Feb. 4. Activities include the Ag Unlimited Auction on Feb. 1 at 5 p.m., the Ag Day Barbecue on Feb. 2 at 11:45 a.m., and various conferences throughout the week ranging from ag-marketing to floriculture. For more information, visit www.cafnr.missouri.edu/agscience.

Tuesday, February 1

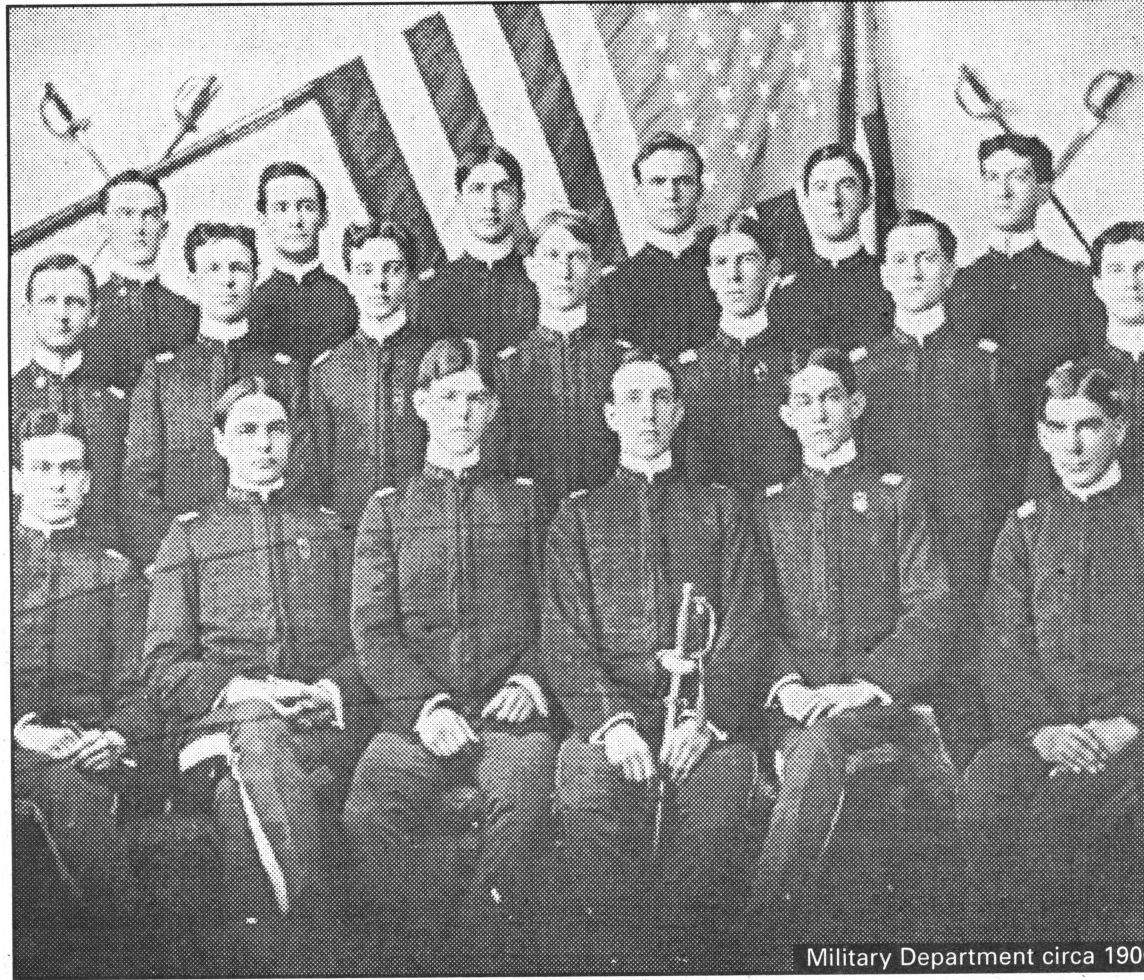
SCREENINGS: Cholesterol screenings are offered from 8 a.m.-noon and 3-5:30 p.m. in the Health Information Center, Columbia Mall. For cost and information, call 882-6565.

Wednesday, February 2

INTERNATIONAL COFFEE HOUR: Association of Malaysian Students will host a social with free coffee from noon-2 p.m. in ground-floor lounge of Memorial Union North.

Sunday, February 6

MUSIC DEPARTMENT CONCERT: "Una Serata Italiana," an evening of Italian food and song, will be presented by JoElla Todd, assistant professor of music, Ann Harrell, associate professor of music, Eric Dillner, assistant professor



Military Department circa 1900

of music, David Rayl, professor of music, Janice Wenger, professor of music, and Michael Budds, associate professor of music, at 5 p.m. in Reynolds Alumni Center. Cost: \$52. Reservations required, call 882-2604.

Tuesday, February 8

OSTEOPOROSIS SCREENING: Osteoporosis screenings are available from 10 a.m.-6 p.m. in the Health Information Center at Columbia Mall. For cost and information, call 882-6565.

Tuesday, February 15

GLUCOSE SCREENING: Glucose screenings are available from 1-5:30 p.m. in the Health

Mizzou in 1900

MILITARY. The University, it has been claimed, sent a larger percentage of its students to the front in the Spanish American War (1898) than any other college in the United States.

After the war, enrollment in the Military Department did not drop but increased consistently until the turn of the century. There were 290 men enrolled in 1900, nearly one-third of the student body.

Information Center at Columbia Mall. For cost and information, call 882-6565.

Tuesday, February 22

VISION & HEARING SCREENING: Vision and hearing screenings are available from 9 a.m.-noon in the Health

Information Center at Columbia Mall. For cost and information, call 882-6565.

Thursday, February 24

MUSEUM FLASHLIGHT TOUR: "How to Make a Good Impression," a flashlight tour of the Russian Impressionist exhibit for families with children between the ages of 7-12 will be held from 6:30-7:30 p.m. at the Museum of Art and Archaeology.

Saturday, March 4

BOOK APPRAISAL DAY: University Libraries is sponsoring a "Book Appraisal Day" from 9 a.m.-12:30 p.m. in 401 Ellis Library.

KIDS' DAY: University Hospital will hold Kids' Day from 10 a.m.-2 p.m.. For more information, call 882-5789.

Monday, March 6

MOLECULAR BIOLOGY WEEK: The 14th Annual Molecular Biology Week begins today and continues through Mar. 10. Various activities include seminars, workshops, panel discussions, annual poster session and contest, and vendor exhibit. For more information, visit <http://biotech.missouri.edu/mbp>

Thursday, April 13

MUSEUM FLASHLIGHT TOUR: "Come Fly with Me," a flashlight tour of the Faith Ringgold exhibit for families with children between the ages of 7-12 will be held from 6:30-7:30 p.m. at the Museum of Art and Archaeology.

Monday, April 17

SOIL & ATMOSPHERIC SCIENCES OPEN HOUSE: The Department of Soil and Atmospheric Sciences will host and open house from 2-4 p.m. Activities include various workshops and presentations. For more information, call 882-0090.

882-6006 • Register at <http://www.missouri.edu/iats/tg>

New! MS Access Users' Group

Interactive on-line discussion group let's users benefit from others' knowledge. Subscribe FREE to get tips, tricks and Access solutions.

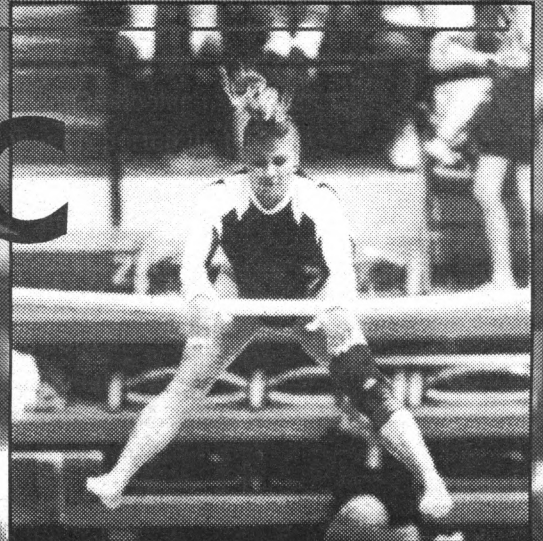
To subscribe, send an e-mail from your MU account to:

listproc@lists.missouri.edu

Leave the subject line blank. In the body of the message, type **subscribe MU-MSACCESS-L yourfirstname yourlastname**. You will receive confirmation of your subscription, as well as instructions for posting to the lists and instructions for unsubscribing. If you have any questions before subscribing, please e-mail one of the list owners: NugentL@missouri.edu or SalmonsM@missouri.edu.

Ellis Library Copy Service Supports the 2000 Gymnastics Team

20th annual State Farm CAT CLASSIC February 4 & 5



TICKETS

**1-800-CAT-PAWS
884-PAWS**

2-DAY PASS:
\$8 (Includes Reserved Seating)

GENERAL ADMISSION:
\$5 adults
\$3 students & children

Reserved seats are available at
Mizzou ticket offices located in
the Hearnes Arena.

COME WATCH MU DEFEND ITS TITLE



Full-Color Copies

when you have five or more full-color
copies made, 8.5"x11" copies only.

Ellis Library Copy Service
Your full-color copy center.

115 Ellis Library
Columbia, MO 65201-5149
Ph. 882-7262 Fx. 884-5004
<http://copy-service.ps.missouri.edu>

Mon. thru Thurs.
7:30am to midnight
Fri. 7:30am to 9pm
Sat. 9am to 9pm
Sun. noon to midnight

good for Winter '00 Semester only

75¢

The rapture of rehabilitating birds of prey

SURVIVAL COURSE MU program rescues injured birds of prey

Dawn Gau grabs a trout from a plastic bag as she approaches the door of the wooden hutch. There's a rustling inside, and between the slats that form the walls she can see a large bald eagle named Elyda with wings spread, impatiently pacing back and forth.

Gau and Elyda have both been with the MU Raptor Rehabilitation Program for six years. Gau volunteered for membership before entering the College of Veterinary Medicine, where she is in her third year.

Elyda, on the other hand, was brought to the program after falling from her nest and breaking both legs. She would not have survived on her own. Gau and other volunteers nursed her back to health, but Elyda remains here in — shall we say — a consulting position.

"Elyda was brought here when she was so young that she has become conditioned to humans," says Gau. "We can't release her because she might pose a danger to people or to herself."

The group's objective is to rehabilitate sick or injured birds of prey and release them back into the wild. The project, established by the veterinary college in 1972, is a service and education activity and receives support from the Missouri Department of Conservation. On average, between 80 and 100 birds are treated every year.

The bathroom-sized hutches that house the raptors — called mews — are located near the college. The compound also includes flight cages where the birds can exercise their wings.

Virtually all of the birds helped by the program have been hit by vehicles, caught in fences



Steve Morse photo

CHOWTIME Veterinary student Dawn Gau volunteers to feed and care for Elyda the bald eagle.

or shot. Veterinary medical students, as well as community members, volunteer their time to nurse these birds back to health. The injured raptors receive treatment, food, shelter, and even a place to exercise while regaining their strength.

The program also provides a permanent home for some birds that can't fly and are unable to hunt because of injuries. These birds assist their caretakers in educating the public during presentations at local schools and events throughout the year.

Program volunteers quickly learn the answers to most of the frequently asked questions:

Do the birds bite? Yes.

Are they tame? No, raptors are wild animals and they stay wild animals even if they become

permanent residents of the program.

Kelly Grabeel, a second-year veterinary student, says it makes her feel good to help these majestic birds — especially to see them return to the wild. "You never forget your first release," says Grabeel. "There are a lot of

mixed emotions. You're happy for the bird, but it's real hard not to get attached to them."

The Raptor Rehabilitation Program also includes an adopt-a-bird component. Donations are used to care for the resident birds. Cost, depending upon the species of raptor, presently ranges from \$25 to \$150. Adoptive "parents" receive a certificate of adoption, a picture and history of the bird, and a history of the species.

For more information about the program, and what to do if you find a sick or injured raptor, call the College of Veterinary Medicine at 882-7821 or visit the website at: www.cvmmissouri.edu/cvm/rrp/



STATE SUPPORT from Page 1 receive and use these funds effectively and appropriately when they do begin to arrive. That means we must have a plan in place, and that plan must be sent to a vote of the people if we are to ensure that the settlement is not tied up in further lengthy litigation."

The governor called for the establishment of a trust fund to set aside tobacco settlement money and to require clear accountability for using the money.

"I believe that these funds would be most appropriately used for health care; smoking prevention efforts; health research that will prevent or cure diseases such as cancer and heart and lung disorders; early childhood education and care; and helping senior citizens pay the spiraling cost of prescription drugs," Carnahan said.

classifieds

FOR SALE

1993 Honda Accord Wagon. 42,000 miles, new tires, almost new battery. 4 cyl 2.2L Engine, automatic, AM/FM Stereo, AC, Cruise, power equipped, tilt steering, tinted glass, garaged. \$10,000. Ed Hanly 573-443-1981.

Historic Rocheport home on 1/4 acre lot; one block from Katy Trail. Large rooms, 3 bedrooms, dining room. New wiring, plumbing, heating and A/C. 15 minutes from downtown Columbia. 698-2222.

Eight rooms, two levels, hardwood floors, large windows, drapes, two bathrooms, major upgrades. Shade trees, mature landscape. \$118,500. Information sheets at 1900 Vassar. 445-6690.

FOR RENT

Nearly-new (built 8/98) 1-bedroom apt. minutes from campus. Laundry hook-ups, dishwasher, large closet. Quiet, well-lit area, wheelchair accessible. Landlord is local and responsive. Cats permitted. 441-9287 or 882-4876.

3-bedroom, 2 bath duplex. Eat-in kitchen; efficient gas heating, air conditioning; washer-dryer hookup; walk-out basement; large yard and trees. Near University. 449-4861.

LANDSCAPING SERVICES

Landscape installation and design, computer imaging design, mulching, pruning, seeding, landscape lighting, border installation, hummingbird and butterfly gardens and mowing. Something Different Landscaping — Days: 999-3815 or 445-3479.

THE CLASSIFIED ADVERTISING SECTION is open to faculty and staff members and retirees.

Home phone number required.

No refunds for cancelled ads.

Ads must be typed.

Rates: 30-word maximum \$7.50

Deadline: Noon Thursday of week before publication.

Mizzou Weekly Classifieds: Make check payable to University of Missouri and send to Mizzou Weekly, 407 Reynolds Alumni and Visitor Center, Columbia, Mo. 65211. Attention: Will Miller

MCU



@ Home



FREE home banking service!
instant access with IBM PC & modem

- access account balances
- view account history
- transfer funds
- make loan payments
- reconcile your checkbook
- make a check withdrawal
- reorder printed checks
- request stop payments
- download to Quicken or MS Money

you can download
MCU @ Home
FREE from our website
www.mizzoucu.org

MIZZOU people

Awards & Honors

The Health Sciences Center Acute Pancreatitis CQI Team

received the Missouri Team Quality Award from the Excellence in Missouri Foundation in Jefferson City in November. The 14-member faculty and staff team was cited for developing diagnosis and treatment guidelines that dramatically increased survival rates of adults with the disease and shortened hospital stays.

Christopher Hardin, associate professor of physiology, received the newly established Dorsett L. Spurgeon Distinguished Medical Research Award at the School of Medicine's Research Day in November. Hardin also gave the keynote presentation, "Cellular Metabolism: Learning New Tricks From an Old Dog."

Julaine Kiehn, director of Campus Dining Services was awarded the Doctorate of Foodservice Medallion at the North American Food Equipment Manufacturers annual meeting in October for her dedication to the improvement of the food service profession.

Mark Ryan, professor of fisheries and wildlife, and co-authors at

five other universities received the 1999 Outstanding Journal Article Award at the Wildlife Society's annual conference in Austin, Texas, in September. The article, "Bird Abundance and Nesting in CRP Fields and Cropland in the Midwest: A Regional Approach," was published in the Wildlife Society Bulletin.

Leon Schumacher, associate professor of biological and agricultural engineering, was one of 10 individuals nationwide to receive a VIP citation from the Future Farmers of America at their national meeting in Louisville, Ky. Schumacher was honored for his work in agricultural mechanization of state and national FFA contests.

Abner Womack, professor of agricultural engineering, was a recipient of the Outstanding Service to Agriculture Award from the Missouri Farm Bureau.

Appointments & Promotions

Charles Cowger, professor and director of social work, in November became the first non-Russian member to be elected to the Russian Academy of Social Education. Since 1998, Cowger has served as president of the Inter-University Consortium for International Social Development, which is made up of social work educators participating in and researching community-based social development.

Patricia Ives, director of development, and **Ann Rogers**, coordinator of development research, were elected president and secretary of the Missouri-Kansas chapter of the Association of Professional Researchers for Advancement at the chapter's fall conference. The conference, which was held in Columbia in October, was organized by Ives and **Doris Mayuiers**, coordinator of development research.

Goffrey Swindells, librarian II and government documents coordinator at Ellis Library, in July was appointed to a two-year term on the legislation committee of the American Library Association's Government Documents Round Table

National & International Presentations

Allen Bluedorn, professor of management, gave an invited presentation on "The Human Organization of Time, Part 1: Polychronicity," to the Organization Studies Group Seminar at the Massachusetts Institute of Technology in October.

Jean Brueggenjohann, associate professor and chair of art, presented a paper titled "Fundamental Things: A Visual Exploration of Women's Domestic and Emotional Culture" at the national conference, The Women of

Appalachia, at the Ohio University in Zanesville, Ohio. Brueggenjohann also exhibited a piece titled AngelBand.

Margaret Flynn, professor emerita of family and community medicine, presented an invited lecture on her research of homocysteine as a new marker for coronary artery disease at the National Institution of Aging in Baltimore.

Donald Lance, professor emeritus of English, presented "Biblical Names in the Toponymy of Missouri" at the International Conference on Jewish Onomastics in Ramat Gan, Israel in June; and "European Influences in the Names of American Indian Groups" at the International Congress of Onomastic Sciences in Santiago de Compostela, Spain in September.

Loren Reid, professor emeritus of communication, gave the keynote address at the annual convention of the Speech and Theatre Association of Missouri in St. Louis. He also was elected to its newly founded hall of fame.

Publications & Creative Activity

Brooke Cameron, professor of art, had a print titled What My Grandmother Told My Mother, She Never Told Me accepted into the Members Exhibition for Southern Graphics Council in Coral Gables, Fla., and the Paper in Particular exhibit at the

Brown Art Center at Columbia (Mo.) College.

Keith Eggener, assistant professor of art history and archaeology, wrote "Towards an Organic Architecture in Mexico," which appeared in the book *Frank Lloyd Wright: Europe and Beyond*, published in October by the University of California Press.

Donald Lance, professor emeritus of English, recently published "Regional Variation in Subjective Dialect Divisions in the United States" in *A Handbook of Perceptual Dialectology*, published by John Benjamins, Amsterdam; and "The Origin and Meaning of OEmissouri," in the September issue of *Names: A Journal of Onomastics*.

Daniel Naegele, assistant professor of environmental design, had his article, "Un Corps a Habiter: The Image of the Body in the Oeuvre of Le Corbusier," published in the *New Zealand architectural journal Interstices*. His review of Adolf Max Vogt's *Le Corbusier, the Noble Savage and of Ivan Zaknic's The Final Testament of Pere Corbu* appeared in the fall issue of *Harvard Design Magazine*.

Sharon Wright, assistant professor of political science and black studies, is the author of a book titled *Race, Power, and Political Emergence in Memphis* published in December by Garland Publishing.

FOR THE record

Recognizing MU staff excellence

Mizzou has more than 8,000 staff members whose daily contributions are vital to the University's operation. Each year, the importance of staff is celebrated during Staff Recognition Week. The annual week of activities will be held this year from April 24 through

28, and one of the highlights of the celebration is always the annual award ceremony for the Chancellor's Outstanding Staff Award.

One award will be given to a staff member in each of the four staff job categories: administrative/professional, secretarial/clerical, technical/paraprofessional and crafts/maintenance. A volunteer committee of staff from around campus will interview the nominees and select the award recipients.

The deadline for nominating

a deserving staff member is noon Friday, Feb. 11. Nominations also are requested for the Mick Deaver Memorial Award, which honors a staff member who fosters good relations with students; and the Barbara Uehling Award for Administrative Excellence.

With questions about eligibility requirements, or for nomination forms, call the Staff Advisory Council office at 882-4269.

Nominations sought for Ratchford Fellowship

Nominations are sought for the C. Brice Ratchford Memorial Fellowship Award, to be given at the May 2000 Board of Curators meeting. University faculty members, whether on or off campus, who make significant contributions to the land-grant mission through extension, international or agricultural economics programs, are eligible.

The \$5,000 award honors the achievements of UM President Emeritus C. Brice Ratchford in advancing the land-grant mission. The first

award was given in May 1999 to Daryl Hobbs, director of the Office of Social and Economic Data Analysis. Nominations must be submitted to the Office of the Executive Vice President, 309 University Hall, by March 1. Award guidelines are on the web at:

<http://outreach.missouri.edu/about/Ratchford/guidelines.html>

LIMITED SUPPLY!!!

MILLENNIUM

APPOINTMENT BOOKS & CALENDARS

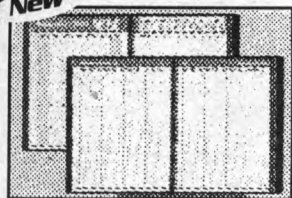
STOCK #0415



14 MONTH WEEK-AT-A-GLANCE
JULY 1, 1999 - AUGUST 31, 2000 4-7/8" x 8"
\$6.11 EACH

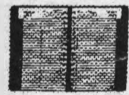
New

STOCK #0409



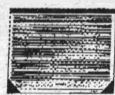
QUICKNOTES
WEEKLY/MONTHLY
PROFESSIONAL
SELF-MANAGEMENT SYSTEM
9" x 11"
\$14.28 EACH

STOCK #0413



DAY-AT-A-GLANCE
4-7/8" x 8"
\$8.52 EACH

STOCK #0481A



12-MONTH DESKPAD
CALENDAR
22" x 17"
\$2.57 EACH



GENERAL STORES 882-6906

"BRINGING COMMITMENT TO A HIGHER EXCELLENCE"

Accounting Services

announces

Judy Schulz's

retirement reception
honoring her 26 years of service



2-4 p.m.
February 3, 2000
3rd Floor—Jesse Hall
Refreshments Served!

On the Move with Mizzou

A Guide to your New Mizzou Weekly



*M*you

This is a new department that features the people — behind the scenes or front-and-center — who keep MU humming. If you have suggestions about people with interesting jobs or hobbies, let us know.

*in*brief

It can be a real chore to keep up with all the happenings at a campus as large as MU. In Brief aims to provide a concise catalog of University events and achievements.

Mizzou people

This column provides recognition for faculty and staff accomplishments, whether it's a publication, a presentation, an award or a promotion.

calendar

A weekly schedule of campus events, everything from concerts and conferences to seminars and special events.

forum

Forum pieces and letters to the editor offer an opportunity for Mizzou Weekly readers to hear other readers' points of view on campus and education issues.

in the media

This feature highlights the national reputation of MU's faculty and staff by recognizing their contribution to news in print or broadcast stories.

Q&A

Our Q&A column provides answers to readers' questions about the policies, places and things that make the University such an interesting place to work. The questions should be of general interest to the campus community. They also must be signed, however the identity of those who ask the questions will remain confidential.

classifieds

Got a garage full of "collectibles" that might bring in a few extra bucks? Want to advertise a service or home business? This is the place to reach an exclusive University audience at a very modest cost — \$7.50 for up to 30 words.

FOR THE record

A perfect place to announce award nominations, plans for upcoming special events or requests for research subjects.

LET US KNOW WHAT YOU THINK

What do you like best about Mizzou Weekly?

How could Mizzou Weekly be improved?

Any other comments?

SEND THIS FORM CAMPUS MAIL TO: MIZZOU WEEKLY, 407 REYNOLDS ALUMNI CENTER, OR FAX YOUR COMMENTS TO 882-7290. YOU CAN ALSO E-MAIL YOUR COMMENTS TO PUBLICATIONS@MISSOURI.EDU

MizzouWeekly

University of Missouri-Columbia
Publications and Alumni Communication
407 Reynolds Alumni and Visitor Center
Columbia, MO 65211

University Libraries
University of Missouri

Digitization Information Page

Local identifier MizzouWeekly(print)

Source information

Format Newspaper
Content type Text with images
Source ID Duplicate copies University Archives weeded out
Notes Volume 21, Number 1, page 6 has a small piece of white paper
glued to the upper right corner that covers some text.

Capture information

Date captured July-December, 2022
Scanner manufacturer Plustek OpticBook
Scanner model A300 Plus
Scanning system software Book Pavilion
Optical resolution 600 dpi
Color settings 8 bit grayscale for majority of pages;
24 bit color for color illustrations/portraits/photographs
File types tiff
Notes

Derivatives - Access copy

Compression Tiff: LZW compression
Editing software Adobe Photoshop 2022
Resolution 600 dpi
Color same as captured
File types pdf created from tiffs
Notes Images cropped, straightened, and brightened.