

**Mizzou and Music**  
Don't forget the annual Chancellor's Concert at 7 p.m. March 3 in Jesse Auditorium

**Food Security**  
New statewide atlas measures rise in Missouri's hungry.  
**Page 2**

**Feb. 28, 2008**  
University of Missouri-Columbia

## Wellness ambassadors

### MOTIVATORS

MU employees help new program promote wellness

**P**hysical inactivity is killing us. Literally. But in this couch-potato age, how can Mizzou get its employees to improve their fitness levels?

The newly created Healthy for Life: T.E. Atkins MU Wellness Program may have the answer. The program is looking to recruit employees to serve as wellness ambassadors who will act as both champions of wellness and catalysts for change, and work to motivate their colleagues to achieve healthier lifestyles.

The only requirements are that the volunteers be enthusiastic, energetic and filled with ideas about promoting a healthier workplace, says Laura Schopp, program director.

"So many people who want to help, support and applaud the efforts of others and this is a nice way to harness that positive energy," she says.

Nearly two months old,



John Tully photo

**HEALTHY FOR LIFE** Rosa Burmeister is one of more than 120 faculty, staff and administrators who have volunteered to be wellness ambassadors who act as liaisons between their work units and the University's new wellness program.

the program already has 127 administrators, faculty, and staff members of all fitness levels who volunteer as liaisons between their respective areas and the Wellness Program. The levels of commitment are limitless, as volunteers do something as simple as posting a newsletter on a bulletin board, pulling together a walking-at-work club, bringing Healthy for Life's pedometer

program to their work areas, or just soliciting ideas from their contemporaries on what activities would be beneficial to their own personal health goals.

Schopp describes liaison Rosa Burmeister as a "dynamo with so much energy and passion about improving the health status of the people she works with. If we could clone her, we'd go a long way toward completely changing

the health status of people at this University."

The reason for this enthusiasm about promoting well-being in the workplace is simple: "It is not just part of my job, it is how I live," says Burmeister, training and development coordinator for Residential Life. "Health and wellness can contribute greatly to providing satisfaction on the job by understanding the link between health, wellness, satisfaction and one's overall quality of life. I believe that genuine interest, support, or passion can greatly improve a person's sense of job satisfaction and quality of life."

For an organization to invest in its No. 1 asset — its employees — makes sense and saves cents. "Health and safety go hand in hand in a work environment," Burmeister says. "The wellness of individuals will always affect absenteeism and productivity."

Originally from Mexico, Burmeister came to Mizzou 15 months ago after serving in academia for more than 25 years and residing in New Mexico, Iowa, Pennsylvania and in Zomba, Malawi, Africa. "All the institutions that I've worked with always promoted being an

advocate of health and wellness, but MU is the first institution to actually provide an empowering well-being program and dedicated staff, she says.

Burmeister got involved with the wellness program because it revolves entirely around employees. "It promotes being proactive instead of reactive," she says. And so does her department. "Residential Life has always been supportive in developing and promoting programs that motivate and inspire employees such as the Healthy for Life Program and Smoking Cessation Program, Burmeister says. She is chair of the department's health and safety committee that is designed to educate Residential Life's employees how health affects job safety.

The wellness program was initiated by and named for former Board of Curators member Tom Atkins, who donated \$105,000 to start it. Schopp and her staff are ready to visit any unit that wants to learn about the program. To schedule a presentation or to become an ambassador, call the program's campus coordinator Jenny Workman at 884-8125.

## Still going strong at 140 years

### HISTORIC MISSION

MU was the first state university to establish a teachers' college

**M**izzou's College of Education will be celebrating a birthday next week — and not just any birthday. In 2008 the college is 140 years old, and its annual Education Week from March 2 to 8 will be the kickoff for that celebration.

In addition to a full schedule of student and educational activities during the week, the college will be hosting a series of talks and public lectures that couldn't even have been imagined when its classes first started in 1868, such as academic freedom in online environments and the debate over the role of religion and sex education in today's classrooms.

"The College of Normal

Instruction was established in 1868 to prepare teachers for public schools. Since then, the college has grown to a network of nearly 48,000 graduates worldwide," says Carolyn Herrington, dean of education. "Today, the college's mission extends to 'Educate Missouri, our Nation and our World.' It calls for research-based discovery and professional practice in each aspect of education, from leadership and counseling to learning technologies and curriculum standards."

MU was the first state university in the nation to establish a college to train future teachers when the Board of Curators established the Normal College in 1868. Ten years later, Grace C. Bibb of St. Louis took over as dean, the first female dean at the University of Missouri. Under her leadership, women were first

allowed to enroll in the Normal College and later to enroll in other academic programs.

The college has achieved a number of other "firsts" over the years. Although its programs are housed in several of the older buildings on campus, Townsend and Hill halls, its facilities rank among the best of the country's education schools. A number of its programs also rank among the top in the nation, and its faculty are national leaders in many areas.

Those faculty are responsible for generating research expenditures that have jumped by 525 percent in four years — from \$646,000 in 2001 to \$3.4 million in 2005. "Just as we led the way 140 years ago, we continue to be a leader in the preparation of teachers who provide the foundation for truly educated citizens," Herrington says.

## Faculty reviews new ballot issue

**F**or more than five years, MU's Faculty Council has been wrestling with an overhaul of the University's faculty grievance policy, which was seen by many faculty as an outdated, cumbersome and inefficient process. Nearly three ago a council committee, after lengthy discussions, drafted a revised grievance process that the Board of Curators agreed could be used at MU on a trial basis for three years.

As that three-year deadline approaches, the council's faculty affairs committee has been exploring ways to further streamline the academic grievance process. Those possible revisions have been discussed at a number

of council meetings.

At its Feb. 28 meeting, the council is scheduled to review a final draft of the grievance revisions and decide whether to submit it to a vote of MU's general faculty. If approved, the ballot will go out to faculty next week.

The grievance revisions that faculty could be asked to vote on next week attempt to streamline what many describe as a labyrinthine process. The most recent changes attempt to reduce the volume of paperwork involved and to tighten up deadlines for stays and appeals.

A complete text of the revised policy will be posted on the Faculty Council Web site at [facultycouncil.missouri.edu](http://facultycouncil.missouri.edu).



**Some Tiger challenges**

Mizzou's mascot, Truman the Tiger, has earned a few turns as top tiger over the years when he's been named the nation's best college mascot. Now Truman can hit the big time once again with help from his Mizzou fans

AE Sports, a national sports game distributor, is sponsoring the Mascot Challenge. Fans from all over the country can vote online for their favorite college or university sport mascot — and Truman can be a contender. The winning mascot will be displayed on the cover of the NCAA Football Nintendo Wii. In this case it

wouldn't be illegal to vote early and often. Fans can vote once a day until the March 14 deadline. The electronic ballot is at easports.com/ncaa09.

You can help out MU's Bengal tiger mascot in another way. The World Wildlife Fund is sponsoring the Tigers for Tigers Challenge. It pits three tiger mascot schools — Mizzou, Clemson and Auburn universities — in a contest to see which can raise the most toward a \$75,000 goal for a program to illegal poaching and trade in tiger parts. More information is online at worldwildlife.org/tigersfortigers. In addition, members of MU's Tigers for

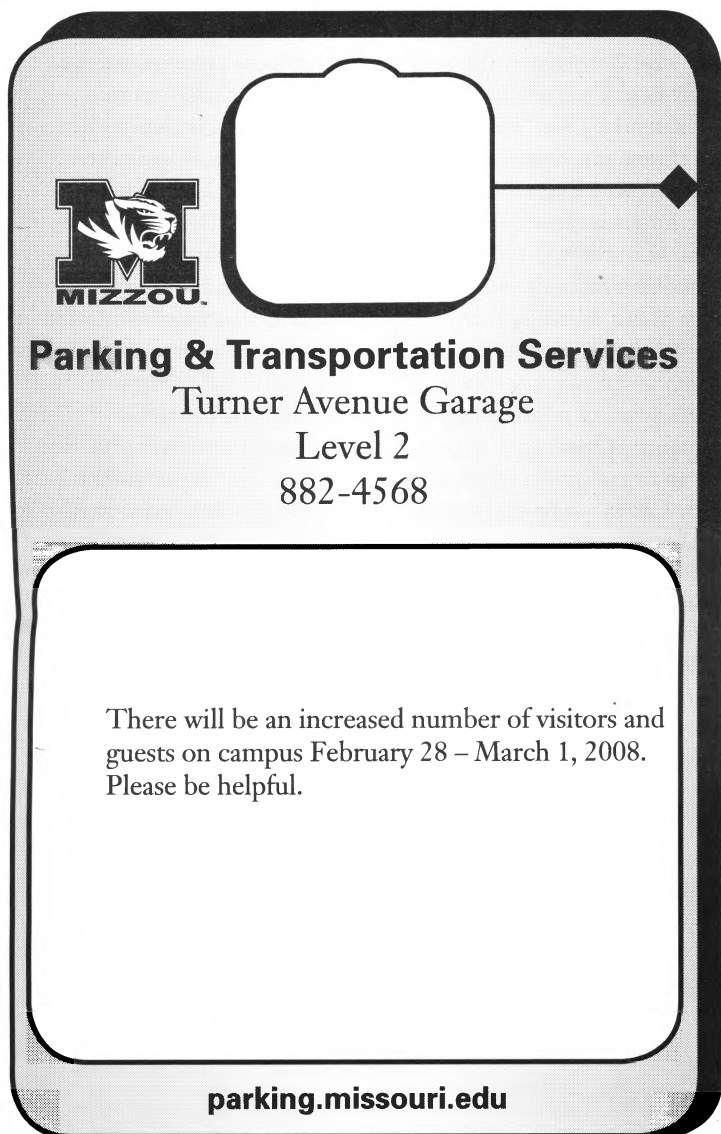
Tigers organization will be raising money for the challenge at the Cat Classic gymnastics meet Feb. 29 and the men's basketball game on March 5.

**A real page turner**

The Missouri Association of Publications, an organization formed in 2004 with the goal of promoting excellence in publications, will hold its annual publishing summit March 6 and 7 in the Memorial Union. Speakers will include MU faculty members and national publishing experts. They will cover topics that include good writing and design, typography, grammar, convergence journalism, and use of multi-media in online publishing.

The keynote speaker at the association's March 7 lunch meeting will be Mike Sager,

best-selling author and award-winning journalist who is a writer at large for Esquire magazine. Cost and registration information for the summit and a complete schedule of events is online at www.Missouri-publications.org. The deadline for discounted "early bird" registration is today, Feb. 28.



**M**  
MIZZOU

**Parking & Transportation Services**  
Turner Avenue Garage  
Level 2  
882-4568

There will be an increased number of visitors and guests on campus February 28 – March 1, 2008. Please be helpful.

[parking.missouri.edu](http://parking.missouri.edu)

**New statewide atlas measures rise in Missouri's hungry**

**FOOD INSECURITY**

Atlas documents conditions in every Missouri county

**M**ore than \$1.1 billion a year is spent on public programs in Missouri, yet a new University of Missouri study reports the state has a rising number of people worried about having sufficient food and coping with hunger. MU's Interdisciplinary Center for Food Security has released a new tool in the fight against hunger. The first Missouri Hunger Atlas details the distribution of hunger in the state and the success of programs trying to meet food insecurity and hunger needs.

"This is a pioneering study because, for the first time, we have charted hunger in every Missouri county and St. Louis City," says Matt Foulkes, co-author and assistant professor of geography. "With the help of state agencies, the atlas documents 16 different measures of need and 12 different measures of program success in reaching

people eligible for services."

The atlas is available online at [missourifamilies.org/mohungeratlas](http://missourifamilies.org/mohungeratlas). It details which counties have the highest and lowest percentages of need and which counties are doing the best job of meeting those needs. Researchers say they were pleased to find the areas of highest need often scored very high in addressing those needs.

"The areas of highest need, such as southeast and south central Missouri were also high performers in meeting hunger needs," says Sandy Rikoon, co-author and director of the Interdisciplinary Center for Food Security. "On the other hand, suburban and higher income areas had a comparatively lower percentage of need, but those areas often have larger populations and were typically lower performers in addressing those needs."

According to the team, poverty is the No. 1 predictor of food insecurity, which is defined by the U.S. Department of Agriculture as access by all

people at all time to enough food for an active, healthy life.

"It's not just hunger that concerns the team," says Nikki Raedeke, co-author and assistant professor of nutritional sciences in the College of Human Environmental Sciences. "We have to be concerned about both the quantity and quality of food. Obesity is a problem in all groups, but especially the poor because they are less likely to be able to obtain nutritious foods."

The researchers plan to release annual updates of the atlas. They hope to raise awareness and assist public agencies and private groups working on hunger issues.

"We are interested in raising awareness about the hunger problem in the state," said Rikoon, professor of rural sociology. "However, we want that awareness to translate into action and to motivate people to do something about the issue."

"The atlas also includes statewide maps that group counties in terms of need and

**SEE Hunger on Page 4**

**HELP WANTED:**

- Musicians
- Magicians
- Dancers
- Comedians

[Insert your talent here]

**FOR STAFF RECOGNITION WEEK 2008**  
contact Angel Anderson 882-4882



**Staff Advisory Council**

University of Missouri-Columbia  
27 Jesse Hall - 882-4269  
<http://staffcouncil.missouri.edu>

**Spring 2008 Newsletter coming in April**

Check out upcoming events and news articles important to the MU Staff and much more!

**FASHION MODELS NEEDED!**

Fashion models needed for the fashion show during Staff Recognition Week. Contact Mary Petty: [petty990@aol.com](mailto:petty990@aol.com)

**MizzouWeekly**

**Volume 29 No. 22**

A publication for the faculty and staff of the University of Missouri-Columbia, published every Thursday during the academic year and twice a month during the summer by Publications and Alumni Communication, a department of University Affairs, 407 Reynolds Alumni Center, 882-7357. News deadline is noon Thursday the week before publication. Annual subscriptions are available for \$30.

**Editor** John Beahler

**Advertising** Lauren Gosling, Scott Reeter

**Photographers** Benjamin Reed, Nicholas Benner, Rob Hill

**Writer/designer** Sue Richardson



**January's Service Champion:**  
Margaret Marshall, Office of the Provost

Our apology for not reporting Jeremy Clark, Library, as the October 2007 winner!  
Susan Scott, Office of Research, was reported as the October recipient but was the November winner.

# calendar



## Concerts & Plays

### Friday, February 29

**MUSEUM CONCERT:** MU's Ensemble Ars Antiqua will perform a Renaissance and Baroque concert, "Reflection on Paintings from the Museum of Art and Archaeology" at 7 p.m. in the Jesse Hall rotunda.

**THEATER SERIES:** MU's World Theatre Workshop will present an adaptation of *Romeo and Juliet* that explores the history and cultural traditions of North Africa and the Middle East at 8 p.m. today, March 1 and March 6-8, and at 2 p.m. March 9 in the Rhynsburger Theatre. For ticket information, call 882-PLAY.

### Saturday, March 1

**GUEST ARTIST RECITAL:** Evgeeni Ratchev will perform on violin at 8 p.m. in Whitmore Recital Hall. A \$5 donation is suggested.

### Sunday, March 2

**GUEST ARTIST RECITAL:** Wolfgang Guggenberger on trumpet and Natalia Bolshakova on piano will perform at 8 p.m. in Whitmore Recital Hall. A \$5 donation is suggested.

### Tuesday, March 4

**FACULTY RECITAL:** The Missouri Quintet will perform at 8 p.m. in

Whitmore Recital Hall. A \$5 donation is suggested.

### Wednesday, March 5

**FACULTY RECITAL:** Leo Saguiguit will perform on saxophone and Ayako Tsuruta on piano at 8 p.m. in Whitmore Recital Hall. A \$5 donation is suggested.

## Conferences

### Saturday, March 1

**WOMEN'S LEADERSHIP CONFERENCE:** The annual Women's Leadership Conference will explore issues

relevant to women in leadership from 9:30 a.m.-5:00 p.m. in Memorial Union North. For more information, e-mail [leadership@missouri.edu](mailto:leadership@missouri.edu).

### Thursday, March 6

**PUBLICATIONS SUMMIT CONFERENCE:** The Missouri Association of Publications will hold its annual Publications Summit beginning today and continuing through March 7 at Memorial Union. The conference will feature bestselling author and award-winning journalist Mike Sager. For more information, e-mail [Dennis.McDermott@missouripublications.org](mailto:Dennis.McDermott@missouripublications.org).

## Courses & Workshops

### Tuesday, March 4

**GRANTSMANSHIP TRAINING:** MU's Office of Research presents "Preparing an NSF Faculty Early Career Development (CAREER) Proposal" from noon-1:30 p.m. in N201/202 Memorial Union.

## Exhibits

**BINGHAM GALLERY:** "2008 Undergraduate Juried Art Excellence Exhibition," an exhibit featuring works by undergraduate art students in a variety of media, will be on display March 3-13. The gallery, located in the Fine Arts Building, is open from 8 a.m.-5 p.m. weekdays.

**BRADY GALLERY:** "Women in the Arts" is a juried exhibition that showcases talented women artists from MU and Mid-Missouri. The exhibit runs from March 3-28. A reception will be held from 4-7 p.m. March 6 in 203 Brady Commons. For more information, call 882-2889.

**MUSEUM OF ART & ARCHAEOLOGY:** "Before Columbus: Iconography in the Ancient Americas" will feature iconography forms found throughout the pre-Columbia New World through May 18. The museum, located in Pickard Hall, is open from 9 a.m.-4 p.m. Tuesday-Friday and from noon-4 p.m. Saturday and Sunday.

## Lectures & Seminars

### Thursday, February 28

**NUTRITIONAL SCIENCE SEMINAR:** Tim Church, professor of preventive medicine at the Pennington Biomedical Research Center, will present "Exercise and Health: Recent Findings and Research Challenges Ahead" at 4 p.m. in Acuff Auditorium, MA217 Medical Sciences Building.

**INTERNATIONAL AFFAIRS SEMINAR:** Paul Miller, president emeritus of Rochester University, will present "Education for Global Citizenship" at noon in S203 Memorial Union.

**ARTS & HUMANITIES LECTURE:** Devoney Looser, associate professor of English, will present "Jane Austen, Jane Porter, and Bath" at 5:30 p.m. at the Conley House. For more information, see [cah.missouri.edu](http://cah.missouri.edu).

now open

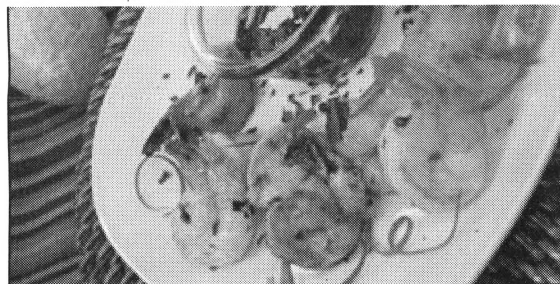
# The Café

## AT ECKLES HALL

open for lunch:

11 a.m. - 1 p.m. Tuesday- Friday  
154 Eckles Hall

The Café offers a delicious selection of salads, soups, sandwiches, entrees and desserts daily. Vist <http://culinarycafe.missouri.edu/the-cafe/> to view our full menu.



The Hotel & Restaurant Management Program's

## World Culinary Tour

Experience cuisine from around the world at the Evening Dinner Series.

- March 4 - French Cuisine
- March 11 - Cucina Deliziosa Italiana
- March 18 - Japanese Experience
- April 8 - Dinner Down Under
- April 15 - Africa: Into the Wild
- April 22 - Carnivale Cuisine
- April 29 - Taste of the Mediterranean
- May 6 - Grand Finale

For more information or to make a reservation, visit: <http://culinarycafe.missouri.edu/evening-series/> or call 573-884-3899. Reservations available from 5:45 p.m. to 8:15 p.m. Events are held in the Commodity Council Room, 154 Eckles Hall.



University Physicians-Woodrail Internal Medicine clinic

Lynn Keplinger, MD



## University Physicians welcomes Lynn Keplinger, MD

University Physicians is pleased to announce that Lynn Keplinger, MD, has joined Internal Medicine and will see patients at the University Physicians-Woodrail Internal Medicine clinic.

Dr. Keplinger received her medical degree from the West Virginia University School of Medicine in Morgantown and completed her internal medicine residency with The Ohio State University Hospitals in Columbus.

Dr. Keplinger and her colleagues Dilip Bearely, MD, and Caroline Kerber, MD, are accepting new patients.

### Convenient location

University Physicians-Woodrail Internal Medicine clinic is conveniently located at 1000 W. Nifong Blvd., Building 3, Suite 130 in Columbia.

Call today

New patients are welcome. To make an appointment with Dr. Keplinger, Dr. Bearely or Dr. Kerber, please call (573) 884-2356. Office hours are 8 a.m. to 5 p.m., Monday through Friday.

Woodrail Internal Medicine



[www.muhealth.org](http://www.muhealth.org)



# classifieds

## INCOME TAX PREPARATION

Retired CPA with large University of Missouri clientele will assist you with your income taxes. Evening appointments also available. Call 573-442-7856.

## REQUEST FOR RESEARCH PARTICIPANTS

This study will address childhood coping and healing activities for adults, who as children were exposed to their mothers being battered by an intimate partner. Contact Dr. Kim Anderson, School of Social Work at andersonki@missouri.edu or (573)884-8077. The classified advertising section is open to faculty and staff members and retirees. Home phone number required.

No campus numbers will be printed.

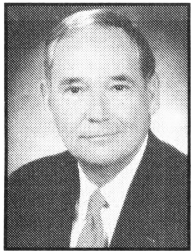
Rates: 30-word maximum \$9

Deadline: Noon Thursday of week before publication.

No refunds for cancelled ads.

Mizzou Weekly Classifieds: Make check payable to University of Missouri and send to Classifieds, Mizzou Weekly, 407 Reynolds Alumni Center, Columbia, Mo. 65211

The Robert J. Trulaske Sr. College of Business presents a Distinguished Alumni Lecture



## Comerica: How Our Corporate Headquarters Relocation Accelerates Growth

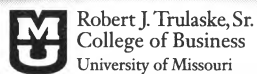
Ralph W. Babb, Jr.

Chairman and CEO • Comerica Incorporated and Comerica Bank

In 2002, Mr. Babb (BS BA '71) was named CEO and chairman of Comerica, a financial services firm with assets totaling more than \$62 billion. A Fortune 500 company with more than 11,000 employees, Comerica ranks among the 20 largest banking enterprises in the U.S. Last year, the bank relocated its headquarters from Detroit to Dallas.

Thursday, February 28, 2008 • 3:45 - 4:45 pm  
Bush Auditorium • Cornell Hall

This lecture is free and open to the public



Robert J. Trulaske, Sr.  
College of Business  
University of Missouri

Parking is available on the upper level of Turner Avenue Garage. • 882.6768 • business.missouri.edu

Enjoy an evening of

# Magnificent Music

at the

## Fifth annual Chancellor's Concert

Monday, March 3  
7 p.m.

Jesse Hall Auditorium

Parking available in Turner and Conley avenue garages

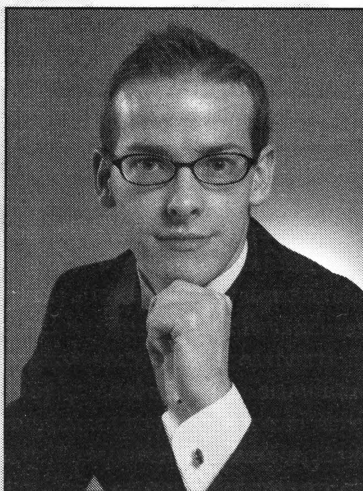
Featuring MU School of Music ensembles:

- University Singers
- University Philharmonic
- Symphonic Wind Ensemble
- Concert Jazz Ensemble

Premiere of music by Sinquefield Prize-winning composer Mark Woodward

After-concert reception hosted by Chancellor and Mrs. Brady J. Deaton

Free and open to the public  
Call 573-882-2604 for more information.



Mark Woodward



Sponsored by the College of Arts and Science  
University of Missouri

Saturday, March 1

SATURDAY MORNING

SCIENCE: Julie Huber, a scientist at the Josephine Bay Paul Center at Woods Hole, Mass., will present "Pushing the Limits: Life at Deep-Sea Hydrothermal Vents" from 10:30-11:30 a.m. in the Life Science Center's Monsanto Auditorium.

Monday, March 3

RELIGION & PROFESSIONS

SEMINAR: Norman Finkelstein, former assistant professor of political theory at DePaul University, will present "A Farewell to Israel" at 7 p.m. at the Old Alumni Center, 1105 Carrie Francke Drive.

Tuesday, March 4

DIVERSITY IN ACTION

SEMINAR: Rita Cavigioli, associate professor of Italian, will present "Diversity in Action in Italy: Generational and Ethnic Crossroads" from 12:30-1:30 p.m. in N208 Memorial Union as part of MU's "Diversity in Action: Bridging Research and Practice" brown-bag seminar series.

WOMEN'S CENTER

SEMINAR: "The Israeli Woman Soldier: The Under-Utilized Potential of Women in the Israeli Defense Forces" will be presented at 7 p.m. in 229 Brady Commons.

MATHEMATICS

EDUCATION LECTURE:

Lee Stiff, professor of mathematics education at North Carolina State University, will present the annual Richard Andrews Lecture, "What You Know For Sure" at 5:30 p.m. in the Life Science Center's Monsanto Auditorium.

Wednesday, March 5

MUSEUM LECTURE:

Christine VanPool, associate professor of anthropology, will present "Ancient Southwestern Ceramics" from 12:15-1 p.m. in the Museum of Art and Archaeology's European and American gallery.

NURSING LECTURE: Michael

Nolte, a Columbia resident who was burned extensively in a 2003 traffic accident, will discuss his two-month recovery in MU Health Care's burn unit and his recent book, *Burned But Not Broken*, at 2:30 p.m. in Bryant Auditorium, M105 Medical Sciences Building. A reception and book-signing will follow his talk.

Thursday, March 6

INTERNATIONAL AFFAIRS

SEMINAR: Paul Wallace, professor emeritus of political science, will discuss the situation in Pakistan at noon in S16 Memorial Union.

ANCIENT STUDIES

LECTURE: Daniel Schowalter, professor of classics and religion at Carthage College, will present "Honoring the Emperor in Northern Israel: The Omrit Temple Excavations and the Sebasteion at Caesarea Philippi" at 6 p.m. in 106 Pickard Hall. A reception at 5:30 p.m. will precede the talk.

RELIGION & PROFESSIONS

SEMINAR: Michael Lindsay, sociologist at Rice University, will discuss his book, *Faith in the Halls of Power: How Evangelicals Joined the American Elite*, at 7 p.m. in 115 Cornell Hall.

Friday, March 7

YOU IN MIZZOU: This dialogue series for students, faculty and staff will discuss "Microaggression: Feeding an Atmosphere of Prejudice" at 7 p.m. in S304 Memorial Union.

## Films

Thursday, February 28

RELIGION & POLITICS

FILM SERIES: *Shake the Devil Off* will be shown at 6 p.m. in Stephens College's Windsor Auditorium. Additional Showings will be on Feb. 29 at 7:30 p.m. in Tiger Hotel's Forrest Theater, and March 1 at 12:30 p.m. in Stephens College's Windsor Auditorium. Call 882-2770 for ticket information.

Tuesday, March 4

MUSEUM FILM SERIES: *On a Clear Day You Can See Forever*,

directed by Vincent Minnelli, will be shown at 7 p.m. in 106 Pickard Hall.

Wednesday, March 5

RELIGION & POLITICS

FILM SERIES: *Earth* will be shown at 7 p.m. in Gannett Hall's Fisher Auditorium.

## Special Events

Saturday, March 1

INTERNATIONAL FASHION

SHOW: MU's international community presents their cultures and traditions through arts and fashion from 7-9 p.m. in Jesse Auditorium.

Friday, March 7

MUSEUM EVENT: Mid-Missouri florists celebrate the museum's artwork with their inspired floral designs, "Art in Bloom," at 7 p.m. in the museum's Cast Gallery.

HUNGER from Page 2

program performance," said Joan Hermsen, co-author and associate professor of sociology. "For policymakers, the maps will be an indispensable aid."

During 2004-2006, an average of 4.4 percent of Missourians experienced hunger and the physical, psychological and social harms of not having

enough food, Rikoon says. "Regretfully, recent trends in hunger are not positive ones for the state. Current averages for hunger represent a more than 20 percent increase over the averages for 2001-2003. That increase is one of the highest in the nation. It is likely that food insecurity and hunger needs will keep rising in the near future."

University Libraries  
University of Missouri

### Digitization Information Page

Local identifier                      MizzouWeekly(print)

### Source information

Format                                      Newspaper  
Content type                                Text with images  
Source ID                                   Duplicate copies University Archives weeded out  
Notes

### Capture information

Date captured                              July-December, 2022  
Scanner manufacturer                      Plustek OpticBook  
Scanner model                                A300 Plus  
Scanning system software                Book Pavilion  
Optical resolution                          600 dpi  
Color settings                                8 bit grayscale for majority of pages;  
    24 bit color for color illustrations/portraits/photographs  
File types                                      tiff  
Notes

### Derivatives - Access copy

Compression                                Tiff: LZW compression  
Editing software                              Adobe Photoshop 2022  
Resolution                                      600 dpi  
Color    same as captured  
File types                                        pdf created from tiffs  
Notes     Images cropped, straightened, and brightened.