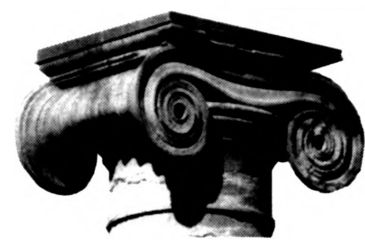


Mizzou Weekly



Painting Campus
MU Calendar stays fresh after all these years.
Page 2

Where Credit is Due
Mizzou's outstanding faculty, alumni honored.
Page 4

Nov. 10, 2011
University of Missouri
mizzouweekly.missouri.edu

*Staff Council: Today at 1:15 p.m.
S204 Memorial Union*

*Fall General Faculty Meeting: Nov. 16
3:30 p.m. MU Student Center*

Pizza and Projects
Free lunch and the latest on Mizzou Advantage. Seminars continue today in Gwynn Hall.
Page 2

Faculty Council debates state performance funding measures

STATE SUPPORT

Measures to be approved in December 2011

Faculty Council members expressed concern last week during a performance funding discussion and update regarding what measures will be used to allocate funds in a proposed state model, especially how the funding metrics reflect the University of Missouri's mission.

Nikki Krawitz, UM System vice president for finance and administration and a Department of Higher Education Task Force member — which aims to develop a performance funding model — updated Faculty Council on a state of Missouri planned higher education performance funding system during its regularly scheduled meeting. The system comes after request from Missouri Gov. Jay Nixon.

Krawitz explained what proposed funding measures will be used under the system and took suggestions on the measures

from Faculty Council members.

The measures — once fund allocation details are determined at a later date — could define how new state monies are distributed to higher-education institutions. At this point in time, all or a portion of new state funding could be distributed based on performance. As the recommendation now stands, all four-year institutions would pick four measures from a list of six, with at least one from each of three categories (see sidebar). Additionally, each institution would choose one measure particular to its institutional mission. Each institution would only compete against itself for improvement or sustained high performance, not against other institutions, she said.

"It's not a new concept," Krawitz said. "In fact, Missouri has had performance funding from time to time over the years ... this is just coming back."

The measures will be taken to the Coordinating Board for

Higher Education for approval in December. But some faculty members expressed discontent, particularly how the measures are geared toward undergraduate students only. For example, some of the recommended measures include undergraduates completing 24 hours in their first year and freshman to sophomore retention rates.

Many Faculty Council members said the measures didn't fully represent MU's institutional mission, which also includes research and many successful graduate student programs.

"Graduate students are getting published; they are getting grants; they are presenting their research at peer-reviewed, nationally and internationally successful conferences," said Rebecca Johnson, associate professor of nursing, explaining that MU is a different institution than other Missouri four-year universities, and if research is included in a measure, graduate

students' success should, too.

Krawitz said the task force had suggested that the fifth measure the University of Missouri might use could be research based. But there must be a way to collect data and quantify the performance metric.

"We need to look at that very closely because, as you know, nationally the pool of research dollars is declining," she said. "However, with that said, there may be ways to talk about how to use the percentage of federal funding, for example. And our numbers have been looking very good on that."

As far as the undergraduate focus, Krawitz said it is simply the way the state of Missouri and the U.S. is moving at this current time. And performance funding is usually focused on a narrow set of goals.

"The focus of the state is increasing the number of undergraduate degrees and post-secondary certifications and licensure," she said. "Oftentimes performance funding is not broad, it's narrow. It's focused on

accomplishing specific goals in a relatively short period of time ...

"I hear your angst, and believe me, I share it because we (University of Missouri) are different," Krawitz said to Faculty

SEE COUNCIL on Page 2

What are the proposed measures?

According to Nikki Krawitz, UM System vice president for finance and administration, four-year institutions in the state of Missouri would choose four measures — selected from data that Missouri's institutions already collect — from those listed in the following three proposed categories:

- Student Progress: Freshman to sophomore retention rate and full-time degree seeking undergraduates completing 24 hours in first year.
- Degree Attainment:

SEE MEASURES on Page 7

Bike Resource Center teaches bicycle repair self-reliance

TRANSPORTATION

Center offers fix-up sessions, workshops

Bicycles are an affordable and environmentally friendly mode of transportation, but occasionally they need repairs.

The MU Sustainability Office educates faculty, staff and students about bicycle mechanics through the Bike Resource Center, which offers repair sessions every Thursday from noon to 2 p.m. on Lowry Mall.

"Bike safety has a few different factors, including making sure all the bike's mechanical pieces are in order," said senior Ben Datema, student sustainability supervisor. "Ideally, we'd like to show students how to repair their bikes by themselves so they can be more self-reliant. That way, when they're riding and something small happens to their bike that prevents them from riding it, they can make that quick fix."

Datema said he and Sustainability Coordinator Steve Burdick started the weekly workshops after they noticed many bikes locked on campus

racks and abandoned for months because of flat tires and other easy fixes. The problems grew as time passed, because the bikes' chains would rust, making the bikes impossible to ride.

With a finite amount of bicycle parking spaces (5,000 as of April 2011), overcrowding can prevent some faculty, staff and students from riding to campus because they might not be able to find a convenient place to safely leave bikes. One of the main goals of the Bike Resource Center is to remove small barriers like these and allow riders to use their bikes for longer periods of time.

Faculty and staff are encouraged to get involved in the program, either as clients or mechanics. Datema noted that the center is available to all members of campus, and he said additional mechanics always are welcome.

"All of our mechanics are volunteers," Datema said. "A lot of them this year have stopped by while we're out on Lowry Mall and offered to help. The workshops themselves have been our best advertisement."

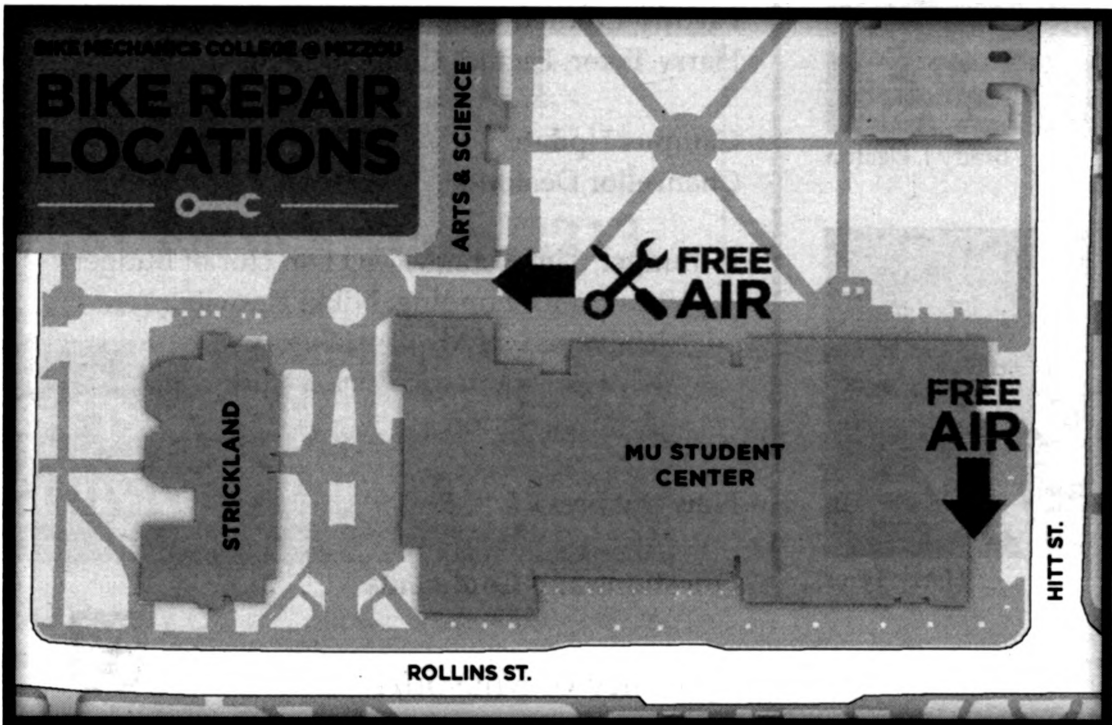
Repairs are free to all members of the MU community. This is possible because of a \$1 fee all students pay each semester. The money goes into a fund managed by Datema, which covers his salary and benefits, student workers and the organization's supplies.

These funds also pay for programs like the Bike Resource Center.

A key aspect of the Bike Resource Center's mission is to teach campus cyclists how to repair bikes on their own. Datema, who often works as a mechanic during the workshops,

says he and his colleagues will show customers what they're doing so the rider knows how to fix the problem again. However, the weekly sessions cannot fix every problem. Most of the work consists of fixing flat tires and loose chains and adjusting

SEE CENTER on Page 2



Graphic by Marshall Danner

SEC bound

After months of speculation, the Southeastern Conference (SEC) has officially welcomed the University of Missouri. SEC commissioner Mike Slive, and University of Florida President Bernie Machen, a native St. Louisan who also chairs the conference's board of presidents and chancellors, joined Chancellor Brady J. Deaton, Director of Athletics Mike Alden and hundreds of MU faculty, staff, students, alumni and fans for the public announcement and celebration at the MU

Student Center Nov. 6.

The Tigers will compete in the Big 12 for the remainder of the 2011-12 school year before officially beginning to play in the SEC July 1, 2012. Fellow Big 12 member Texas A&M will join Mizzou in the new 14-team SEC.

Pizza and Projects

The Mizzou Advantage Undergraduate Research Teams, which are designed to create interdisciplinary research-based working groups comprised of faculty mentors and undergraduate students, will host another Pizza and Projects event from

noon to 1 p.m. Thursday, Nov. 10, in Gwynn Hall. Free pizza will be served on a first-come, first-serve basis.

The Life Sciences and Society Program used its Mizzou Advantage grant money to establish two campuswide working groups in Evolutionary and Science Studies. Evolutionary Studies uses evolutionary theory to understand a broad range of biological and cultural processes while Science Studies investigates the reciprocal interaction of science and culture. At the Pizza and Projects event,

members of the groups Heidi Apple, Andre Ariew, Mary Shenk and Lynn Chiu will lead a discussion about the two new working groups.

Also, Janet Saidi's "Food, Fuel and Society" project was an interactive forum to promote education and understanding around the issues of food and fuel in today's society. At the event, Saidi will the outcomes from her project and hopes for the future.

Spreading technology thoughts

The Technology Evaluation Subcommittee Meets Thursday,

Nov. 10, and MU faculty, staff and students with ideas for a process or a technology that supports teaching and learning are invited to submit them for consideration. The meeting is from 2:30 to 3:30 p.m. in S206 Memorial Union.

The committee was created by the MU Information Technology Committee (MUITC) in order to assist in gathering information about new university processes and technology needs to support teaching and learning, vetting potential technologies from a variety of perspectives and to make optimal strategic

Printing Services keeps calendar tradition going strong

YEARLY CUSTOM

Campus photos have watercolor effect

It's time for employees to sign up for a free Printing Services 2012 wall calendar.

Calendars are provided by Printing Services to all MU, University Health Care and Columbia campus UM System employees who preorder online.

By preordering calendars, employees help Printing Services cut down on waste. Individual

requests also are preferred for automated addressing.

"We are not trying to create a hurdle or obstacle for people by asking them to sign up," said Rick Wise, MU printing services director. "In past years, we flooded the campus with the calendars. This seems to be a more efficient way to marry up the demand with the supply."

The 2012 calendar features Rick Reed's photographs. Over several months, Reed,

a printing services employee and amateur photographer, photographed various campus icons. To enhance their appeal and make them more unusual, a watercolor effect was added to some photos so that they look like paintings, Wise explained.

"We do the calendar to keep awareness heightened about our operation, but at the same time, I want it to be interesting and fun," Wise said.

It's more difficult than

it looks, however.

"We've been doing this for about 30 years and it's hard to come up with an interesting theme year after year," Wise said.

So, for the 2013 calendar it occurred to him to seek help from future photojournalists in the MU School of Journalism. It may be a new twist for the new yearly tradition.

"We are actively pursuing this," Wise said. "I think this would be great because the students are why we are here and to have their perspective on how they see the campus would be interesting."

Nov. 30 is the deadline for

ordering the 2012 wall calendars that will be distributed in December by campus mail.

Supervisors with employees who do not have access to a computer should call Joanne Rotert at 882-4210 or email rotertj@missouri.edu.

Wise said extra copies of the calendar will be available at Printing Service's Digiprint Centers in Ellis Library and the MU Student Center.

"I hope people enjoy and use them," Wise said. "They contain useful information about MU's academic calendar as well as other reminders."

Fall General Faculty Meeting

November 16, 2011, 3:30 to 5 p.m.

Chamber Auditorium
MU Student Center

Agenda**Call to Order**

Chancellor Brady J. Deaton

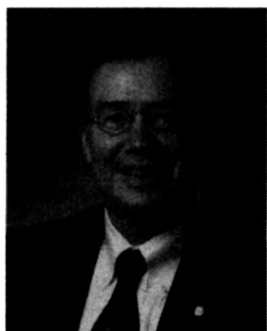
Faculty Council Update

Harry Tyrer, Faculty Council Chair

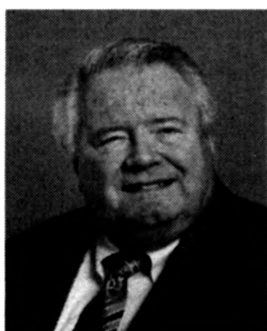
Campus Update

Chancellor Deaton

Budget, Tim Rooney, MU Director of Budget
Performance Funding, Nikki Krawitz,
University of Missouri System
Vice President for Finance and
Administration

New Business**Questions and Comments**

Brady J. Deaton



Harry Tyrer

University of Missouri

**COUNCIL from Page 1**

Council members expressing frustration. "One could argue that as the research university of the state we shouldn't be included in the same set of measures that the other four-year institutions are included in. But right now that's not the direction we've been going in."

The current plan is to implement performance funding for fiscal 2014, but the measures to do so will be decided on in December by the Coordinating Board for Higher Education.

CENTER from Page 1

brakes and derailleur gears.

"One thing about the Bike Resource Center is that we don't have replacement parts; we only make adjustments. To have parts we would have to be a full-service bike shop."

In addition to the regular fix-ups on campus, Datema coordinates the Bike Mechanics College, a five-week series of classes that was modeled from a similar PedNet program. Datema said registration information and cost details are still being worked out. His overall goal is to show the MU community the benefits of cycling.

"We want to facilitate bike riding as a mode of transportation on campus," he said. "It offers environmental and health benefits, and also helps people economically

Krawitz said she will bring all of the information gathered at last week's Faculty Council back to the University of Missouri president, chancellors and the Council of Public Higher Education group for recommendation. She will also give the same presentation at the General Fall Faculty Council meeting at 3:30 p.m. Nov. 16 in MU Student Center.

All University of Missouri campuses will be subject to the same set of performance funding measures once chosen.

because they don't have to pay for gas. All of those factors are important to students, and I hope faculty and staff will take advantage of this opportunity as well."

— Ryan Schmitz

MizzouWeekly

Volume 33 No 12
mizzouweekly.missouri.edu

A publication for the faculty and staff of the University of Missouri, published every Thursday during the academic year and twice a month during the summer by Publications and Alumni Communication, 407 Reynolds Alumni Center, 882-7357.

Editor Greta Lieske

Advertising Molly Leonard,

Scott Reeter

Designer/writer Sue Richardson

Photographers Nicholas Benner,

Rob Hill

Writers Megan Cassidy, Ryan Schmitz

recommendations for funding to the MUITC.

Don't get flattened by the flu

If faculty and staff haven't done so, there's still a chance to get a Healthy for Life flu shot on campus as well as a health screening. The T.E. Atkins University of Missouri Wellness Program will offer free flu vaccines for faculty, staff, dependents and retirees enrolled in a UM Health Care Program at these times and locations:

- 10 a.m. to noon, Thursday, Nov. 10; Conference Room of

the MU Police Department, Virginia Avenue Parking Garage

- 1 to 5 p.m. Thursday, Nov. 10; Townsend Hall

- 10:30 a.m. to 4 p.m., Friday, Nov. 11; 194A and B, Campus Facilities lobby

The shots are free for enrollees in a UM Health Care Program. If you are not enrolled, the cost is \$15, cash or check only. Children must be 12 years and older to receive the vaccine. Flu vaccine forms can be completed by going to wellness.umsystem.edu.

Free health screenings for those enrolled in UM System Health Care Program will be

available at the Townsend Hall and Campus Facilities locations.

Wreath-laying ceremony recognizes sacrifice

Members of the Mizzou family are invited by the Student Unions Programming Board (SUPB) to gather to celebrate one of MU's most-revered traditions — laying a wreath to honor veterans under the Memorial Union tower.

The ceremony at 12:30 p.m. Friday, Nov. 11, (Veterans Day) is part of MU's campus Veterans Week and recognizes the past and current sacrifices of the men

and women who have served and continue to serve in the U.S. Armed Forces. Following the ceremony, SUPB will host a reception for veterans in attendance.

There will also be a University of Missouri Veterans Center Open House from 1 to 3 p.m. at Memorial Union, which is open to the public. Everyone is welcome to stop by to meet MU students and staff who are veterans.

Leadership in Diversity

The first Leadership in Diversity Series event with Dean Robert Churchill will be

Wednesday, Nov. 16, from 3:30 to 5 p.m. in S107 Memorial Union. Churchill is dean of the MU School of Medicine.

The Leadership in Diversity Series provides a forum for college and department leaders from across campus to share their strategies for promoting an inclusive learning and research environment.

For more information, contact the Office of the Chancellor's Diversity Initiative at 573-882-5838.

RJI plans forum on maintaining quality local reporting

AMERICAN JOURNALISM

Forum follows FCC report on state of industry

Following a report from the Federal Communications Commission (FCC) on the state of American journalism, the Reynolds Journalism Institute will host a forum Nov. 15 on how to maintain quality reporting at the local level.

"What's important in the digital age is that there are major changes in how we get information," said Amy McCombs, Lee Hills Chair in free press studies at the Missouri School of Journalism, who is coordinating

the symposium along with Barbara Cochran, Curtis B. Hurley Chair in public affairs journalism. "The FCC is in a perfect position to look at communication needs, and we're trying to examine the impact their recommendations would have on local news coverage. We're at a once-in-a-generation moment now, so this is a critical point for the industry."

Highlights of the event will include a keynote speech by former FCC official Steven Waldman, who directed the commission's report, and a series of panel discussions with industry executives,

moderated by faculty members in the School of Journalism. Sponsored by the Carnegie Corporation and the Knight Foundation, the symposium will look at the FCC report's implications for commercial and nonprofit media outlets.

"Steve has reviewed the information industry extensively, and he has a comprehensive knowledge of how communication works," McCombs said. "The support we're receiving from the Knight and Carnegie foundations adds a lot of credibility to this discussion."

Local coverage has fallen

behind in the transition to online-based news, the FCC found. The report lists increases in government waste and local corruption and a decrease in student performance as consequences of this lack of local coverage.

"The Internet has undercut the traditional business model, driving away advertising and audiences," Waldman said. "Newspapers have cut staff, and radio and television have not filled the gap. There are a lot of media outlets like blogs and phone apps, and the missing piece is full-time reporters. There is a

tremendous lack of accountability.

"People don't turn over rocks and look into the shadows, and this will lead to wasted money, increased pollution and a host of other problems that come up when the government and other organizations are not held accountable."

The Reynolds Journalism Institute symposium will run from 9:30 a.m. to 4 p.m. in 200 Fred W. Smith Forum. Attendees must register for the event, which is free and open to the public.

More information is available on the RJI website, rjionline.org.

— Ryan Schmitz

What strategies are currently used to bring about creative thinking?

How can faculty and graduate students develop learning environments that elicit creativity in students?

Find out at:



FACILITATING STUDENT CREATIVITY

AN INTERDISCIPLINARY SYMPOSIUM

Friday, November 18, 2011

10 a.m. - Noon

MU Student Center - Room 2213

Please pre-register at:
<http://tiny.cc/MUcreative>

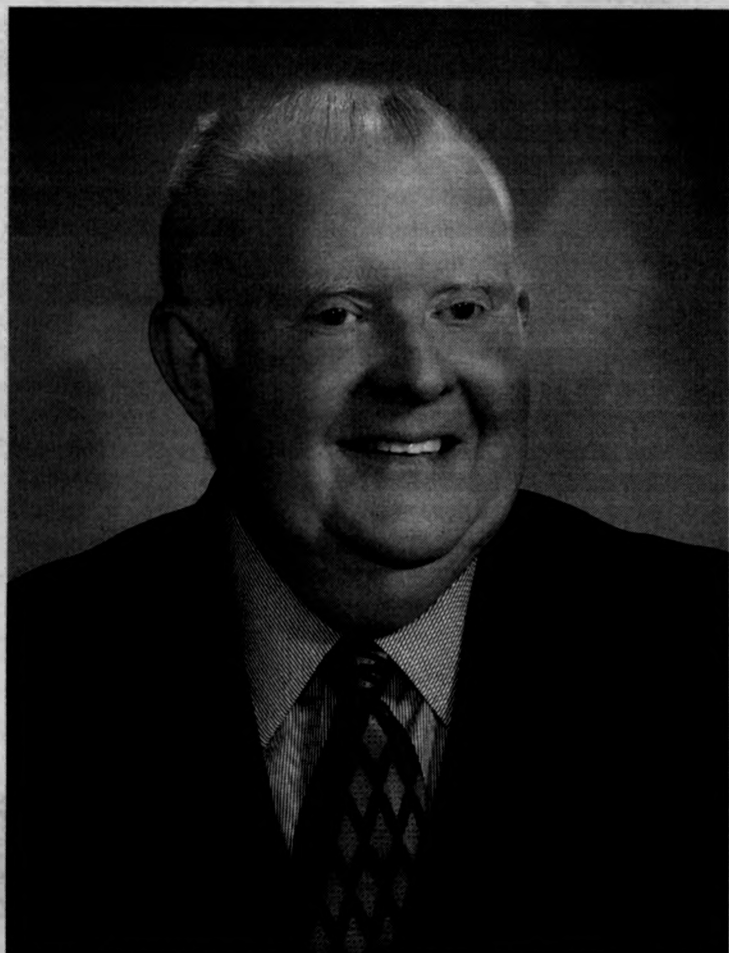
*A presentation of the Faculty Creativity Workshop Committee
Sponsored by the Vice Provost for Undergraduate Studies*

Honoring Mizzou's outstanding faculty and alumni

Each year the Mizzou Alumni Association honors individuals who make significant contributions to the university's missions of teaching research, service and economic development.

Winners of the 2011 Faculty-Alumni Awards were announced last spring, and the recipients will be recognized tomorrow evening, Nov. 11, at the 44th annual awards banquet in Reynolds Alumni Center.

The awards include the Distinguished Service Award and the Distinguished Faculty Award, the two highest awards that the association bestows. Also at the ceremony, 12 alumni and faculty members will be honored for their contributions to Mizzou.



Edwin S. Turner, Distinguished Service Award winner

Edwin S. Turner will receive the Distinguished Service Award, the highest honor given to an MU alumnus.

Turner, BS Ag '62, of Chillicothe, Mo., is CEO of EST Enterprises. A state-certified appraiser involved in the real estate business for more than 30 years, Turner is a long-time devoted and outspoken advocate for Mizzou, with a sustained legacy of service to the university that is unmatched.

He is a founding member and past chair of the University of Missouri Flagship Council, a private, statewide group of alumni and friends who advocate for Mizzou in the capitol. He served as a member of the University Of Missouri Board Of Curators from 1985-1991 and as president in 1989.

In addition to the university, he serves the state, his community and his profession, and he has received numerous awards

for his many contributions and volunteer leadership.

His service includes leadership positions in both the Missouri and the National Association of Realtors, vice president of the Missouri State Fair Foundation in 2009, president of Chillicothe Industrial Development Inc. in 1993 and president of the Chillicothe Chamber of Commerce in 1980.

He is former campaign chair and chief of staff for the late Congressman Jerry Litton and is serves as vice president for the Jerry Litton Family Memorial Foundation.

Four generations of Turner's family are Mizzou graduates beginning with his mother, Nellie Jones Turner, BS HE '33, Ed '33.

Turner, a life member of the Mizzou Alumni Association, received a Faculty-Alumni Award in 1991.

Betty Houchin Winfield, Curators' Professor in the School of Journalism, will receive the annual Distinguished Faculty Award.

An enthusiastic, energetic and creative scholar, teacher and mentor, Winfield is one of the nation's leading journalism historians.

She has taught mass media history to more than 8,000 students, has received numerous prestigious awards, and she is widely and frequently quoted as the nation's leading authority on first ladies in American culture.

Winfield published some of the earliest research studies on U.S. presidents and mass media, first ladies and the press, and the journalistic reliance on historical referents.

A trusted mentor to numerous students, many of whom are now professors at universities in the United States and abroad, Winfield has published four books and has two more in progress. She received the Kappa Tau Alpha National Research Award for her book, *FDR and the News Media*, published in 1990. She also has written more

than 120 research articles, book chapters, encyclopedia entries and refereed conference papers.

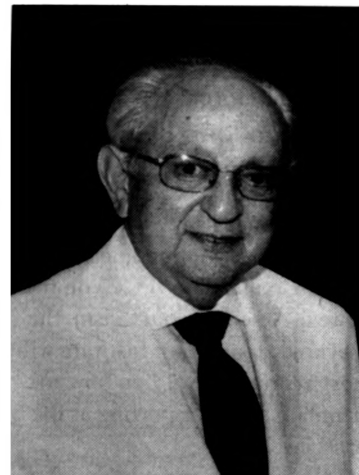
Winfield joined MU in 1990 after a distinguished career at the Edward R. Murrow School of Communication at Washington State University. She served MU, too, as an adjunct professor of political science and an affiliated professor of the Truman School of Public Affairs.

Her awards include:

- Faculty-Alumni Award from the Mizzou Alumni Association in 2002
- Sydney Kobre Award for contributions to journalism history in 2009
- University of Washington Department of Communication Hall of Fame Inductee in 2011
- O.O. McIntyre Distinguished Professor of Journalism for Excellence in Teaching, Missouri School of Journalism, 2009-2010
- Association for Education in Journalism and Mass Communication Cathy Covert Award for best publication in journalism history in 2008

Winfield is a member of the Mizzou Alumni Association.

The 2011 Alumni Award winners are:



Carl J. DiCapo, BS Ag '91
National President,
Board of Trustees,
National Agriculture
Hall of Fame

For 46 years the energetic civic leader and restaurateur DiCapo was the face of Kansas City's famous restaurant, Italian Gardens, which had been a family owned business for five generations until it closed in 2003.

Restaurant visitors DiMaggio, Marciano, Lanza and Sinatra are featured in his story of entrepreneurship and the Italian-American experience.

He has played a key role in numerous Kansas City projects like building the World War I National Museum and more than 30 civic and nonprofit organizations.

He attended Mizzou from 1945 to 1948, but his studies were interrupted by the Korean War. He returned in 1991 and earned a degree from MU's hotel and restaurant management program — a program he helped establish in 1969.

A stretch of Main Street in Kansas City is designated "Carl J. DiCapo Drive" and the City of Fountains includes a fountain in Kessler Park named for him.

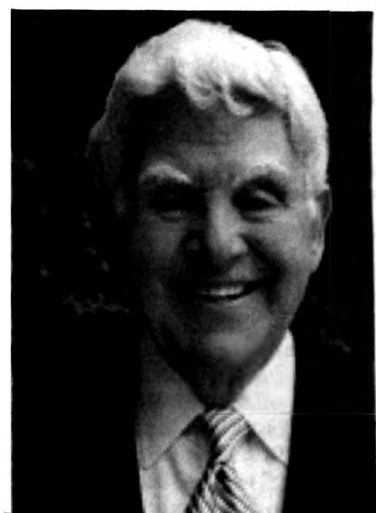
He received the Salvation Army's first Lifetime Achievement Award in 2008 and its William Booth Award in 2001.

In 2003, DiCapo received the Joseph P. Cianci Humanitarian Award from UNICO, an Italian-American organization.

He is a member of the Mizzou Alumni Association.



Betty Houchin Winfield, Distinguished Faculty Award winner



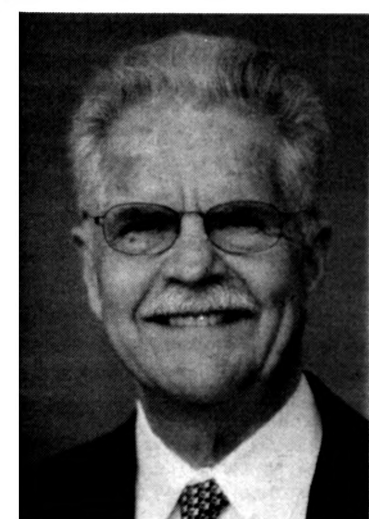
S. Leslie Flegel, AB '59
Owner, Flegel Family Enterprises LLC

Anationally recognized authority on retail marketing and distribution, Flegel, of Naples, Fla., has more than 30 years of experience in manufacturing, logistics and running a public company.

Flegel founded Source Information Management Co., which became Source Interlink Cos. in 1995. During his 11-year tenure with Source Interlink, the company grew its revenues from \$2 million to \$2 billion. He currently owns investment companies involved with leasing, logistics and distribution.

In 2006, he founded the Flegel Academy for Aspiring Entrepreneurs in MU's Trulaske College of Business.

He is noted for his philanthropic activities in St. Louis. One in particular is the funding of the Flegel-Keyser Cascades located in Forest Park. Leslie and his wife have sponsored scholarship programs at Webster University, as well as founding the Clara Fishman Fund for Single Parent Families in 1978 through the Jewish Community Center. The Community Center has also benefitted from his leadership of their Big Brother and Big Sister program.



Donald L. Flora, BS IE '66, MS '68, MS '71, President of Flora & Associates, Inc., General Manager of the Mid-America Kidney Stone Association (MAKSA)

The premier healthcare management professional in the Kansas City area, Flora has had a major impact on

his community's health by planning area-wide cost-effective delivery of health care.

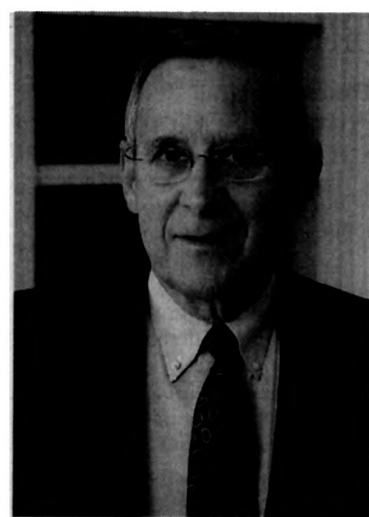
Since 1982, he has led Flora & Associates to assist hospitals and nursing homes through the maze of laws and regulations necessary for successful operation.

In 1989 he was instrumental in bringing 32 hospitals and 10 urology practices together to create a mobile lithotripsy program to treat kidney stones, a service too expensive for any single hospital or group to provide.

In 2009, MAKSA received a Secretary of Defense Freedom Award for its support of a staff member serving in the military.

In 2010, Flora received a Missouri Honor Award for Distinguished Service in Engineering.

He is a life member of the Mizzou Alumni Association and a Jefferson Club Very Distinguished Fellow.



Thomas H. Lafferre, BS ME '56
Retired Vice President of Operations, Monsanto Chemical Co.

Avisionary who achieved a reputation as an exceptional engineer and business leader, Lafferre, of Brentwood, Tenn., served Monsanto in numerous roles and work projects in 11 countries during his career of nearly 40 years.

He joined the company upon graduation from Mizzou, and he retired in 1993. During his career he earned advanced degrees from Washington University and Harvard's Graduate School of Business.

Known as an excellent mentor of young professionals, Lafferre has invested his talents in his community and alma mater. He served on the St. Louis Science Center board of commissioners during the formative period from 1983 to 1990 as the institution built a \$34 million facility that opened in 1991.

As an active member of the MU College of Engineering Dean's Engineering Advisory Committee, Lafferre is a leader in developing strategies for the college. He was the first major donor to the college's \$68 million capital campaign, and as a result Engineering Building East was named the Thomas and Nell Lafferre Hall in December 2004.



Rosemary T. Porter, PhD '83
Dean Emerita and Associate Professor Emerita of Nursing

A leader in creating innovative care systems for older adults, Porter has had a major impact on the fields of nursing and education.

During her tenure as dean from 1999 to 2008, grants increased 486 percent as she helped the Sinclair School of Nursing become a powerhouse for nursing research. She also helped the school form a partnership with Americare Systems Inc. to build and operate TigerPlace, an aging-in-place residence based on current innovations that are spreading across the country in academic health settings.

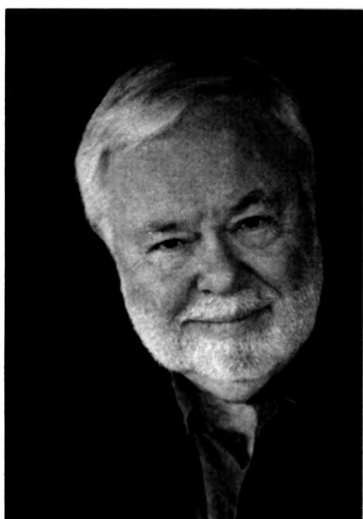
Porter's research interests focused on the work environment of the nurse.

From 2008 to 2010, she served as interim dean of education at MU.

She is a Nightingale Society Fellow and member of the Library Society and Grace Bigg Society.

In 2004, she received a Manuel T. Pacheco Academic Leadership Award.

Porter is a life member of the Mizzou Alumni Association.



Ron Powers, BJ '63
Writer in Residence Castleton (Vt.) College

An award-winning, best-selling author of 14 books, Powers of Castleton, Vt., is considered a leading American nonfiction writer.

He was born in Hannibal, Mo., and one of his hometown heroes, Mark Twain, influenced a great deal of his writing.

His biography, *Mark Twain: A Life*, was a finalist for the National Book Critics Circle

Award in 2005. His *Tom and Huck Don't Live Here Anymore: Life and Loss in Two American Towns*, was a finalist for the *Los Angeles Times* Book Prize. He also wrote the Mark Twain-themed two-act play, *Sam and Laura*.

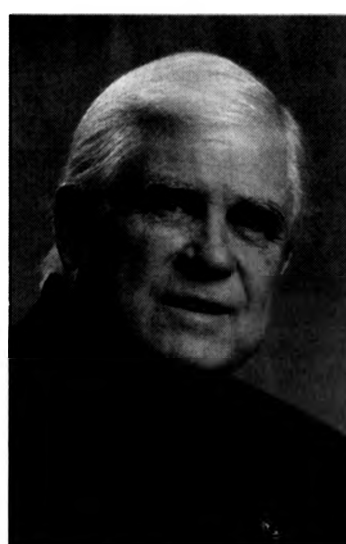
Powers collaborated with the late Sen. Edward M. Kennedy on his *New York Times* best-selling memoir, *True Compass*, published in 2009.

In 2000, he co-wrote *Flags of Our Fathers*, a No. 1 *New York Times* bestseller, of which Clint Eastwood directed the Oscar-nominated movie version of the novel in 2006.

Powers received an Emmy Award in 1985 for his commentary on *CBS News Sunday Morning*.

In 1973, he was the first TV critic to receive a Pulitzer Prize for his work as a TV-radio columnist for the *Chicago Sun-Times*.

This year, he received a Literary Lights Award from Boston Public Library.



James C. Sterling, BJ '65
Professor and Missouri Chair in Community Newspaper Management

Inducted into the Missouri Newspaper Hall of Fame in 2003, Sterling brought nearly 30 years of experience as a newspaper publisher to journalism students at Mizzou when he joined the faculty in 2000.

Through his company, Sterling Media, he was owner and publisher of a successful newspaper group and printing operation serving the southwest Missouri communities of Bolivar, Stockton and Buffalo.

He was a member of the University of Missouri Board of Curators from 1987 to 1993.

He is a founding member of the Missouri Flagship Council, the Chancellor's Advisory Council and the Missouri Press Foundation.

A Jefferson Club Very Distinguished Fellow and life member of the Mizzou Alumni Association, Sterling received the Missouri Honor Medal in 1999 from the School of Journalism.

He co-wrote *Polk County Classics ... 150 Years of Polk County History* that was published in 1985.

The 2011 Faculty Award winners are:



Joe Hobbs
Professor and Chair of Geography

Sometimes called "Indiana Joe," Hobbs uses his extensive field research to enliven every geography lecture he gives to MU students, weaving in first-hand stories of travel to faraway places like South Asia, the Middle East, Madagascar, South America and the High Arctic.

As author of several books, including his always-evolving *World Regional Geography* textbook, he reaches countless students beyond MU with his rich writings and photographs. He studies both the landscape and the cultural context of places, gaining an understanding of an ancient nomadic way of life by living among Bedouin in the Egyptian desert, studying peoples' perceptions of sacred space at the pilgrimage destination of Mount Sinai and establishing MU's linkages with the people, institutions and government of Vietnam.

This year, he received the 2011 MU International Engagement Award for extending the University's global reach.

Hobbs is a charter member of the Vietnam Initiatives Group and former member of the MU's Council on International Initiatives.

He received an MU Provost Award for Leadership in International Education in 2009 and a Kemper Fellowship for Teaching Excellence in 1994.

Continued on Page 6



Jean Ispa
Professor and Co-Chair
of Human Development
and Family Studies

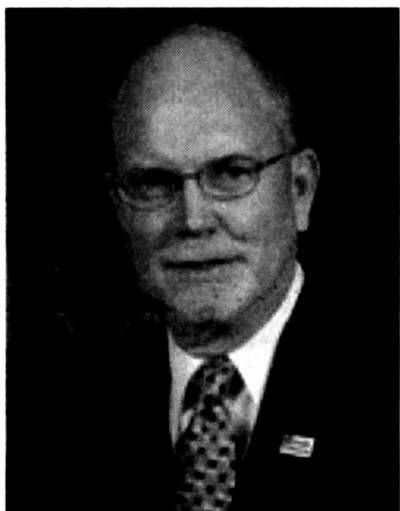
An expert on early childhood development and education, Ispa started her MU career in 1978 as an instructor in the nationally acclaimed Child Development Laboratory. Since then she has expanded her expertise to include Russian families and American families in poverty. Together with her co-investigators, Ispa has been awarded nearly \$2 million in grants from the U.S. Department of Health & Human Services between 1996 and 2009 and has twice been honored by the International Research and Exchanges Board. She was one of the developers of Focus on Kids, a research-based educational program for divorced and separated parents that has served more than 45,000 parents in Missouri.

Ispa has written or co-written three books, 46 journal articles and 15 book chapters.

Instrumental in developing MU's child life degree programs, she was involved in the national evaluation of the Early Head Start program.

She received a Graduate Professional Council Gold Chalk Award in 2002 and a University of Missouri Graduate Faculty Mentor Award in 2008.

Since 2010, she has served as an adviser to the Central Missouri Community Action Agency.



Richard E. Oliver, BS Med Tech '71, M Ed '73, PhD '77, Dean of the School of Health Professions

Innovation and service to others are the hallmarks of Oliver's 37-year career at Mizzou.

He is the founding dean of the School of Health Professions and has actively supported nine highly respected and innovative community outreach teaching clinics that serve as hands-on learning and research opportunities for SHP students and faculty.

Other accomplishments and awards include:

- Founder of the Adult Day Connection, a Robert Wood Johnson model program in adult day health care service
- Co-founder and president of Allied Health Research Institute, a partnership that shapes allied health public policy and research
- Founder of the MU Four Winds Learning Community, a residential community for health professions students
- Fellow of the Association of Schools of Allied Health Professions
- Fellow of the Jefferson Club
- Member of the SHP Touchstone Society
- Member of the Mizzou Alumni Association



James N. Spain
Vice Provost for Undergraduate
Studies, Associate Professor of
Dairy Nutrition and Interim
Vice Provost of eLearning

A campus leader in creating a supportive learning environment for students, Spain also has helped dairy producers across the nation through his research and innovative extension programs.

He is the only person at MU to be named as the university's top teacher, top adviser as well as being recognized for creative extension programming. He worked with student leaders to develop Mizzou 101, a course that teaches the traditions of Mizzou to new students.

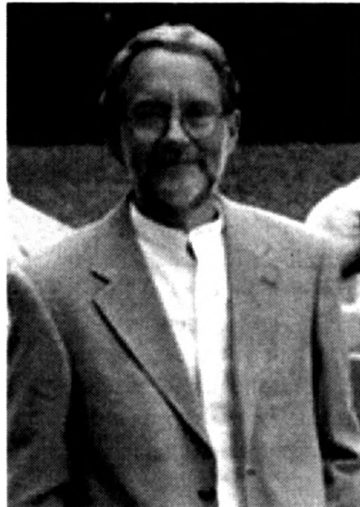
Spain introduced the 100-Day Contract management approach for transition dairy cows that is now used throughout the country, and he has given presentations on dairy cattle nutrition and management in more than 30 states and 10 countries.

He serves on the boards for Olivet Christian Church and Heart of America United Way.

In 2006, he received the Purdy Award for Excellence in Student Services from the

College of Agriculture, Food and Natural Resources.

A sustaining member of the Monticello Society, Spain received the Governor's Award for Excellence in Teaching in Higher Education from MU in 2002 and a Kemper Fellowship for Teaching Excellence in 2001.



Steven Watts
BA '75, PhD '84
Professor of History

Respected by both the scholarly community and the popular press, Watts has received some of the most coveted book awards in his field and garnered international media attention by organizations such as *The New York Times*, NPR, PBS and C-SPAN.

He has written five books, including biographies of Walt Disney, Henry Ford and, most recently, the controversial American icon Hugh Hefner. He is writing his sixth book, a biography of Dale Carnegie. In these books, Watts explores issues in modern American history related to consumer capitalism in a culture obsessed with self-fulfillment, entertainment and leisure.

His first book, published in 1987 and titled *The Republic Reborn: War and the Making of Liberal America, 1790-1820*, won the annual book prize from the National Historical Society and was runner-up for the best book award from the American Studies Association.

Watts received a Provost's Outstanding Junior Faculty Teaching Award in 1988 and a Kemper Fellowship for Teaching Excellence in 1995.

He is a sustaining member of the Jefferson Club.

calendar



Concerts & Plays

Thursday, Nov. 10

UNIVERSITY THEATRE
SERIES: "Girl in a Cube," by Matt Fotis and directed by Suzanne Burgoyne, will be at 7:30 p.m. today through Nov. 12, and at 2 p.m. on Nov. 13 in the Corner Playhouse. For ticket information, call 882-PLAY or visit theatre.missouri.edu.

Thursday, Nov. 17

UNIVERSITY CONCERT
SERIES: Presents "Messiah," performed by the Choral Union, University Singers and University Philharmonic. The performance begins at 7 p.m. in Jesse Hall Auditorium. For ticket information, call 882-3781.

Courses & Workshops

Thursday, Nov. 10

- COMPUTER TRAINING:**
- "HTML 5 CS5: Tables, Layout & Typography" will be offered at 8:30 a.m. in N3 Memorial Union.
 - "Photoshop CS5: Colors & Image Size" will be offered at 1 p.m. in N3 Memorial Union.
 - "PowerPoint: Presentations that Wow" will be offered at 1 p.m. in 4D11 East Ellis Library.

Registration is required online at training.missouri.edu or call 882-5000.

Friday, Nov. 11

- COMPUTER TRAINING:**
- "Word 2010: Formatting Thesis & Dissertation" will be offered at 8:30 a.m. in N3 Memorial Union.
- Registration is required online at training.missouri.edu or call 882-5000.

Monday, Nov. 14

- COMPUTER TRAINING:**
- "Dreamweaver: Advanced Forms, Reports & Queries" will be offered at 1 p.m. in N3 Memorial Union.
- Registration is required online at training.missouri.edu or call 882-5000.

Tuesday, Nov. 15

- COMPUTER TRAINING:**
- "Photoshop CS5 Advanced Techniques" will be offered at 8:30 a.m. in N3 Memorial Union.
 - "Web Design" will be offered at 8:30 a.m. in 4D11 East Ellis Library.
 - "InDesign CS5 4: Tables, Long Documents & Books" will be offered at 1 p.m. in N3 Memorial Union.
 - "Access 2010: Advanced Forms, Reports & Queries" will be offered at 1 p.m. in 4D11 East Ellis Library.
- Registration is required online at training.missouri.edu or call 882-5000.

Wednesday, Nov. 16

- COMPUTER TRAINING:**
- "Basic PHP Programming" will be offered at 8:30 a.m. in 4D11 East Ellis Library.
 - "Dreamweaver CS5 2: Introduction to CSS" will be offered at 1 p.m. in N3 Memorial Union.
- Registration is required online at training.missouri.edu or call 882-5000.

Friday, Nov. 17

- COMPUTER TRAINING:**
- "Windows 7" will be offered at 8:30 a.m. in N3 Memorial Union.
 - "Outlook 2010: Taking Control of Your Calendar" will be offered at 8:30 a.m. in 4D11 East Ellis Library.
 - "Excel 2010: Formatting & Printing" will be offered at 1 p.m. in N3 Memorial Union.
 - "PowerPoint: Art, Charts & final Production" will be offered at 1:00 p.m. in 4D11 East Ellis Library.
- Registration is required online at training.missouri.edu or call 882-5000.

Exhibits

- BINGHAM GALLERY:** "MFA Thesis Exhibitions" will be on display from through Dec. 1 with reception to be announced. The museum, located in the Fine Arts Building, is open from 8 a.m. to 5 p.m. weekdays.
- MUSEUM OF ART AND ARCHAEOLOGY:** "The Mediterranean Melting Pot: Commerce and Cultural Exchange in Antiquity" which provides a fascinating look into the ancient world, will be on display through Dec. 18. The museum, located in Pickard Hall, is open from 9 a.m. to 4 p.m. Tuesday through Friday, 9 a.m. to 8 p.m. Thursday, and from noon to 4 p.m. Saturday and Sunday.
- STATE HISTORICAL SOCIETY:** "A State Divided: Missouri and the Civil War," a collection of objects that chronicle the conflict in both the state and nation will be on display from Sept. 15 to Jan. 28.

classifieds

WANTED

Alpha Axis Pro tennis racquet stringing machine with tool package and reel of string. Purchase price was \$842. For sale now for \$450 or best offer. 573-489-0136.

FOR RENT

3 BR, 2 bath duplex in Valley View Gardens. \$675/month. Avail. 12/8. Ph. 864-4439.

EVENTS

22nd Annual Columbia Weavers' & Spinners' Guild Holiday Exhibition & Sale. Nov. 11, 5:30-8 p.m.; Nov. 12, 9-4; Nov. 13, 11-3. Boone Historical Society Museum

For a limited time, classified ads are FREE for MU faculty, staff and retirees for up to a 30-word line ad.

•Home phone number or e-mail address required.

•Deadline: Noon Thursday the week before publication.

•No refund for cancelled ads.

To submit an ad, call 884-1278 or e-mail mizzouweekly@missouri.edu

Gallery hours are 8 a.m. to 4:45 p.m. Monday through Friday, and 8 a.m. to 3:30 p.m. Saturdays.

MUSEUM OF

ANTHROPOLOGY: "Japanese Art & Archery," an exhibit focusing on the prominence of the bow in Japanese culture as well as ceremonial and functional equipment, will be on display through Jan. 31, 2012.

The museum, located at 100 Swallow Hall, is open from 9 a.m. to 4 p.m. weekdays.

THE CRAFT STUDIO

GALLERY: The Craft Studio gallery's objective is to present shows of well-crafted and cohesive art works to broaden ideas about art. The following artisans will be on display

- Eon Ju Jeon's work will be on display through Nov. 11.
- Derek Frankenhouser's work will be on display from Nov. 14 through Nov. 25.
- Malik Saaka's work will be on display from Nov. 14 through Dec. 9.

The gallery, located in the N12 Memorial Union, is open from 10 a.m. to 9 p.m. Monday through Thursday, 10 a.m. to 6 p.m. Friday, noon to 6 p.m. Saturday, and noon to 4 p.m. on Sunday.

Lectures & Seminars

Thursday, Nov. 10

DISTINGUISHED LECTURE SERIES IN PSYCHOLOGY:

Todd Heatherton, Lincoln Filene professor in human relations, presents "Neural Mechanisms of Self-Regulatory

Failure" from 3:30 to 5 p.m. in Jesse Hall Auditorium.

STATE HISTORICAL SOCIETY:

Presents "Life During Wartime, the Civil War in Central Missouri" with Rudi Keller who is a graduate of the Journalism school with 25 years experience reporting on politics. He will speak from 5:30 to 6:30 p.m. at the State Historical Society, 1020 Lowry St.

Saturday, Nov. 12

SATURDAY MORNING

SCIENCE: Anna-Louise Reysenbach, of University Portland State University, will present "From There to Here, Funny Microbes are Everywhere" at 10:30 a.m. in the Life Sciences Center's Monsanto Auditorium.

Monday, Nov. 14

MU INFORMATICS

INSTITUTE: Dr. Cathy Wu, Edwards G. Jefferson chair of bioinformatics and computational biology at the University of Delaware, will present "Integrative Bioinformatics for Knowledge Discovery in Systems Biology" from noon to 1 p.m. in the Bond Life Sciences Center's Monsanto Auditorium.

Tuesday, Nov. 15

EDUCATIONAL

TECHNOLOGIES: Presents "Special Considerations in STEM Fields" from 11:30 a.m. to 1 p.m. in 2212 Student Center.

Wednesday, Nov. 16

COMPLIANCE AND QUALITY

SERIES: Cynthia Haydon, grant writer II, MU School of Medicine, will presents

"Compliance and Quality: NIH Public Access Policy" from 1 to 2 p.m. MA217 Acuff Auditorium.

Films

Friday, Nov. 11

MIZZOU STUDENT

VETERANS WEEK: "Captain America: The First Avenger" (2011), directed by Joe Johnston, will be presented at 7 and 9:30 p.m. in Jesse Wrench Auditorium, Memorial Union. The film is free to veterans and \$1 for all others.

Thursday, Nov. 17

MUSEUM OF ART AND

ARCHAEOLOGY: "Land of the Pharaohs" (1955), directed by Howard Hawks and starring Joan Collins and Jack Hawkins, will be presented at 7 p.m. in 106 Pickard Hall. The film is free and open to the public.

Special Events

Thursday, Nov. 10

MIZZOU VETERANS DAY

VIGIL: The Mizzou Joint ROTC Annual Veterans Day Vigil will be from 10:45 a.m. Thursday, Nov. 10, until 11:11 a.m. Friday, Nov. 11, at the Boone County Courthouse. Volunteer cadets and midshipmen from the Army, Navy, Marine Corps and Air Force ROTC programs at Mizzou will form two-person details to perform a vigil of honor in front of the Boone County war memorials. Members of the Exercise Tiger will read a list of

veterans' names during the vigils and at the courthouse ceremony.

Friday, Nov. 11

BLACK AND GOLD FRIDAY:

Mizzou fans can help paint Memorial Stadium black and gold by picking up items at the University Bookstore for 25 percent off. All Mizzou insignia clothing and gift items are discounted.

HOLIDAY EXHIBITION:

The 22nd Annual Columbia Weavers' and Spinners' Guild Holiday Exhibition and Sale will be from 5:30 to 8 p.m. Friday, Nov. 11, 9 a.m. to 4 p.m. Saturday, Nov. 12, and 11 a.m. to 3 p.m. Sunday, Nov. 13, at the Boone Historical Society Museum.

Friday, Nov. 18

BLACK AND GOLD FRIDAY:

At the last home football game of the season, stop by the University Bookstore to save 25 percent on Mizzou insignia clothing and gift items.

ROTC VETERANS DAY

PARADE: The parade starts at the Mizzou Columns traveling along Eighth Street to the Boone County Courthouse starting at 10:40 a.m.

MEASURES from Page 1

Six-year graduation rate; total degrees awarded; and degrees awarded per full-time equivalent students, (although the use of this measure is still undecided due to a problem with it on an institutional basis).

• Quality of Learning:

Performance on nationally normed examinations (either major field, general education or professional licensure exams). Krawitz said university provosts asked the task force to add the Quality of Learning category.

The list of measures has not been finalized and other options can still be considered. However, a decision will have to be made soon since approval of the measures will be decided by the Coordinating Board for Higher Education in December.

Each institution must also determine a fifth measure particular to its mission. Krawitz indicated that the University of Missouri might choose Research Funding as its fifth measure.

MADE YOU LOOK

Advertise with

MizzouWeekly

mizzouweekly.missouri.edu

Veteran's Wreath Laying Ceremony

East Side of the Memorial Tower
Memorial Student Union

Friday, November 11th
12:30pm



MISSOURI STUDENT UNIONS
PROGRAMMING BOARD

Know the buzz...Bee the event!

Extra Mizzou directories available through Nov. 18



Free to university
employees

When: 1-3 p.m.
Monday-Friday

Where:
Campus Mail,
Hitt Street
Parking
Garage

**Pick up your
copy today!**

To Fee or Not to Fee... Had Enough?

Make the Switch and Save!

We offer the same products and services as other financial institutions – but with better rates and fewer fees.

- FREE checking with no-fee instant issue debit cards
- FREE online and mobile account access with bill pay
- Low-rate car, student and personal loans
- Stable savings options with competitive rates
- Low fixed-rate credit cards with no annual fee and optional rewards
- Mortgages and home equity products...and more!



We're local too – with six shared branch locations and a branch on the Mizzou campus, and 25 free ATMs in Columbia. So what are you waiting for? **Make the switch today!**



TIGERS
CREDIT UNION

N17 Memorial Student Union, Lower Level
Columbia, MO 65211 • tigerscu.org
573.443.8462 or 888.673.2844



Federally insured by NCUA. Additional coverage up to \$250,000 provided by Excess Share Insurance Corporation, a licensed insurance company.



Healthy for Life: T.E. Atkins UM Wellness Program



Townsend Hall, Lobby, Nov. 10, 1-5 p.m.
Campus Facilities, Lobby Nov. 10, 1-5 p.m.

Flu Shots (Faculty, Staff & Students)

Enrolled in a UM Health Care plan?

Get a FREE flu vaccine:

- Enrollees 12 and older
- Bring Coventry insurance card
- Bring completed flu vaccine form
(get this at www.wellness.umsystem.edu)

Not enrolled in a UM Health Care plan?

Get a flu vaccine:

- Be 12 and older
- Bring \$15 cash or check
- Bring a completed flu vaccine form
(get this at www.wellness.umsystem.edu)

Flu Shots are a collaboration between Healthy for Life, MU Student Health and Faculty & Staff Benefits

Health Screenings (Faculty & Staff)

Faculty & Staff can earn your **\$100 Wellness Incentive** in a tax favored account to use for medical expenses in 2012 by completing your **personal health assessment** and **health screenings**.

Create your Cerner account and schedule your screening appointment today by going to
www.healthyforlife.umsystem.edu



University Libraries
University of Missouri

Digitization Information Page

Local identifier MizzouWeekly(print)

Source information

Format	Newspaper
Content type	Text with images
Source ID	Duplicate copies University Archives weeded out
Notes	

Capture information

Date captured	July-December, 2022
Scanner manufacturer	Plustek OpticBook
Scanner model	A300 Plus
Scanning system software	Book Pavilion
Optical resolution	600 dpi
Color settings	8 bit grayscale for majority of pages; 24 bit color for color illustrations/portraits/photographs
File types	tiff
Notes	

Derivatives - Access copy

Compression	Tiff: LZW compression
Editing software	Adobe Photoshop 2022
Resolution	600 dpi
Color	same as captured
File types	pdf created from tiffs
Notes	Images cropped, straightened, and brightened.