

MIZZOU WEEKLY

Volume 35, No 3

THE UNIVERSITY OF MISSOURI: CELEBRATING 175 YEARS IN 2014

September 5, 2013

Inside

■ PAGES 4-7

Semester calendar

■ PAGE 3

MU landscapes

The art of landscape design

■ PAGE 8

Meatball fiber

Researcher puts the fiber in an Italian favorite

■ PAGE 2

Leadership 101

Sign up for leadership program

MU Health program helps staff cope with patient deaths

EARLY IN SUE SCOTT'S WORK as patient safety coordinator in the Office of Clinical Effectiveness at MU Health Care, she was working with a clinician who had lost a patient. Scott asked the clinician how he was coping, and the clinician started crying.

Scott didn't know how to handle it. "I felt like I was reaching into an empty toolkit," she said.

The encounter was the impe-

tus for the University of Missouri Health System's forYOU Team for peer support. The first of its kind when launched in March 2009, the program helps health care workers recover from a traumatic clinical event or an unexpected patient death.

Scott and colleagues dug into the literature on "second victims," or health care workers who suffer mental trauma following

a stressful clinical event. Second victims can feel personally responsible for the outcome and often second-guess their abilities, sometimes dropping out of the profession entirely, Scott said.

"In thinking back to my first nursing experience with the death of a patient, I just remember crying," said Laura Hirschinger, patient safety clinical improvement specialist at the health system and

facility leader of the forYOU Team. "But everybody around me was like, 'It's just a normal day.'"

Health care workers are often given the impression that to look professional, they need to not become emotional over the death of a patient. So when Scott and Hirschinger were looking for interviewees for their research project on second victims, they thought it might be difficult to find participants willing to share their stories.

They found the opposite. Physicians, nurses, managers and other allied health care workers were looking for a way to heal.

Scott, Hirschinger and two additional researchers identified a six-stage grieving process and an intervention model to support those who struggle, such as creating a "safe zone" to express their thoughts and emotions and providing assurance that what they are experiencing is a normal human reaction to a stressful event.

Since its inception, more than 100 MU Health System staff members have been trained and nearly

See COPING on Page 7



PHOTO BY NICHOLAS BEV

Reaching Out

Sue Scott, left, patient safety coordinator, and Laura Hirschinger, facility leader of the forYOU Team, wanted to help grieving hospital workers cope with the death of patients.



Expert talks about medical diversity at School of Medicine lecture

University of Missouri develops health care programs to broaden diversity

MARC NIVET has catalogued plenty of frequent flier miles over the past three years.

During that span, the chief diversity officer of the Association of American Medical Colleges in Washington, D.C., has visited 50 colleges and universities across America. On Aug. 29 he visited the MU School of Medicine to deliver a lunchtime lecture on diversity in medicine.

Nivet told an audience in Bryant Auditorium that the old approach to diversity in higher education was undertaken out of duty and fairness, not as a belief that diversity could benefit institutions. But that view has shifted. These days, the best schools understand the "dividends of diversity," Nivet said.

People of different backgrounds and ethnicities can learn

from one another, he said. In medicine, health care professionals and patients are the beneficiaries. Regarding patients, many times they are more comfortable when treated by a physician who looks like them, he said. As America becomes more racially diverse, the country needs more doctors of different ethnicities.

"We don't have to give up something to be diverse," Nivet said. "Diversity helps us be better institutions."

Nivet also discussed two "structural barriers" to diversity in medicine: too small of a K-12 pipeline resulting in high school students not being exposed to the career possibilities in health care, and the rigorous admissions process.

He said GPA and the MCAT scores should not be the only criteria for acceptance into med-

ical school. "Levels of curiosity, tenacity and perseverance all matter," Nivet said.

In recent years, the University of Missouri has ramped up its commitment to diversity. The School of Medicine has six programs that reach out to high school students of different backgrounds and ethnicities to encourage them to consider a career in medicine.

Those programs include the Cristo Rey Network National Partner, in which the medical school supports a summit where urban youth learn about medical careers; Mini-Medical School, a summer program for high school students; and Mizzou MedPrep, which offers one-on-one advising resources to students from

See MED DIVERSITY on Page 8

MU Alert, police programs help keep campus community safe

Emergency information posted at mualert.missouri.edu

IN AUGUST 2007, the University of Missouri began MU Alert, the campus's emergency mass notification system. It is designed to alert the MU community of a campus threat or unusual situation via mass email, text, landline telephone notification and Twitter, as well as through Facebook posts and alerts on the MU Alert website.

The program was put in place in response to the spring 2007 shooting at Virginia Tech University that killed 32 people and ended with the suicide of the shooter.

Since installation, MU Alert has been used on several occasions. Last February, the system was used to alert the MU community of campus closings due to blizzard conditions.

Administrators encourage staff, faculty and students to keep

'We always look for new ways to keep the MU community aware of an emergency,' said Karlan Seville, communications manager of Campus Facilities.

their contact information, such as cell phone and text numbers, updated with MU Alert at mualert.missouri.edu.

MU continues to explore further ways of notification. There is a plan, for example, to install Alert Beacons on building walls.

The wall devices are the size of a thermostat and, in an emergen-

See ALERT on Page 2

IN BRIEF

➔ Statistical analysis assistance

The Social Science Statistics Center in the Middlebush Building helps researchers at MU with their statistical analysis. Faculty and student researchers can learn more at sssc.missouri.edu/form2013a, or by emailing Director Lori Thombs at thombsl@missouri.edu.

➔ Discount for first vet exam

The MU Veterinary Medical Teaching Hospital in Clydesdale Hall, 900 E. Campus Drive, offers university employees \$10 off the cost of their first visit. Hours are 8 a.m.-5 p.m. Monday-Friday. For more information and to schedule an appointment, call 882-7821.

➔ Cancer center extended hours

Ellis Fischel Cancer Center offers late-night digital mammograms for women over age 40 or for women who have a doctor's order. The exams are 6 p.m.-midnight Oct. 4, and 7 a.m.-noon Oct. 5. All exams are by appointment. To make an appointment, call the center at 882-8511.

➔ Online Calendar

MU has rolled out Mizzou Events, an online calendar full of upcoming events, from sporting events to lectures. This is the official online calendar for MU. To post information at Mizzou Events, faculty, staff and students need only to log in with their university identification. Check it out at calendar.missouri.edu.

Learn leadership skills at Emerging Leaders Program

REGISTER BY SEPT. 16 for the Chancellor's Emerging Leaders Program, a professional development opportunity for MU employees.

These are individuals who have demonstrated high levels of responsibility in their current position, show potential for leadership growth, and demonstrate an interest in enhancing understanding and effectiveness as leaders. It combines active participation, personal and professional assessment information, and direct

application of skills to improve leadership competencies.

The program consists of seven sessions over the course of several months, including a three-day workshop based on being an effective communicator and leader, and a two-day training session on conflict management. Participants will also discuss team-building, cultural competency and fiscal responsibility.

Email Rachelle Duke at muhrsemembers@missouri.edu for information.

From ALERT on Page 1

cy, flash a strobe, emit a siren and display a notification message.

About 225 units will be installed initially, with more installed in the future depending on funding, said Karlan Seville, the Campus Facilities communications manager.

The reason for the beacons is that emails, cell phones and landline telephones aren't always accessible in buildings. Reception for cell phones can be spotty, and instructors often ask students to silence their phones during classes; staff and faculty many times turn their cell phones off during the day. The beacons, manufactured by Alertus in Beltsville, Md., will fill this emergency communication gap, Seville said.

"We always look for new ways to keep the MU community aware of an emergency," she said.

MU police also do their part to help employees and students remain safe.

One of its programs is Rape Aggression Defense (RAD), a self-defense program for women, consisting of both classroom study and one-on-one practice.

Participants receive a manual that teaches general safety and

defense techniques, said Capt. Brian Weimer, a public information officer at MUPD.

Women learn hands-on defense skills by pairing up with other students and practicing with a certified instructor, Weimer said.

Classes' locations vary based on the class size or special occasions. Each class has an average of 10 students.

RAD also offers the program for men. MUPD Lt. April Colvin described this course as teaching men "how to de-escalate situations to avoid physical confrontations as well as how to defend against physical aggression if de-escalation does not work or is not an option."

A third RAD class is the Citizens' Response to Active Threats. This class is for situations when there is an active shooter or other emergency threat. Because of the time limit for each class, these courses don't teach self-defense.

"RAD is unique because of the classroom and simulation exercises," Colvin said.

All the RAD classes are free to the MU community. For more information, call MUPD at 882-7201.

— JeongAn Choi and Mark Barna



THE OFFICE OF THE PROVOST
cordially invites you to a retirement reception for

Linda Cook

honoring her 46 years of service to the University of Missouri

Tuesday, September 17, 2013 | 4 - 6 p.m. | Program at 4:30 p.m.
Benton Bingham Room (N 214-215), Memorial Union

Please direct inquiries to 884-1273.

We are creating a book of letters to present to Linda at the reception. If you would like to include a letter, please send a hard copy to the attention of Kirsten Malinee in 114 Jesse Hall by September 10.

PATRIOT DAY BARBECUE

Wednesday, September 11, 2013
5:30 to 7:30 p.m.
Francis Quadrangle

Chancellor and Mrs. Brady J. Deaton invite
Mizzou faculty, staff and student military veterans
and immediate family members to a barbecue in honor of
your service to our country.

University of Missouri

RSVP by 9/4/2013
573-882-1989 or
events@missouri.edu

ADA accommodations
contact University Events at
573-882-1989

MIZZOU WEEKLY FALL 2013 CALENDAR



Creating Art

John Glenn, a senior landscape architect in Campus Facilities, considers his architectural renderings a form of art. See some samples on Pages 4, 5 and 6.

Landscape architect creates art at home and at work

John Glenn, who took up oil painting five years ago, is working on a farm-scene series

IN JOHN GLENN'S DESK DRAWER, there is a stack of broad paper sheets. As he takes out the stack and flips through each page, various landscapes of the MU campus emerge, mostly drawn in color markers. He calls them sketches, but they are so much more — they are his art.

Glenn is a senior landscape architect at MU. Since joining the university five years ago, he has created landscape renderings used in literature to potential donors. Three of his sketches are displayed on Pages 4, 5 and 6.

"We are the conductors," Glenn said of landscape architects. "We bring together the architects, the engineers and anybody in the

building industry to try to marry buildings with the site. We work on parking lots, set scenes and we do gardens, trying to create a space and an environment."

His passion for drawing and painting started while taking architecture classes at University of Kentucky. He graduated in 1985 with a BS in landscape architecture. His focus was on residential design, which he described as "more personal" than other architectural fields. He was not a big fan of perspective and the clean lines his colleagues were drawing. He preferred sketching the landscapes surrounding the buildings.

"My architecture professor didn't really like me drawing too

many lines," he said, smiling. "But he later said, 'You just go ahead with that, you're a landscape person anyway.' So that's when I kind of started my art."

Before joining MU, Glenn had 25 years of experience in landscape architecture and related fields, including managing horticulture at a zoo. He is expert in making quick renderings of landscapes using markers and colored pencils, which are used in presentations of architectural design ideas. He explained rendering as "coloring a plan or a perspective of what the site would look like."

But rendering wasn't his artistic passion. He always had

a special interest in oil painting because his father worked in the medium when Glenn was a child. Around the time he started at MU, he took up oil painting as a hobby and joined a weekly painting group.

Gloria Gaus, a local painter in the group, said Glenn is shy and humble about his work. "He seems to like to capture nostalgic scenes and family moments," she said. "He definitely has a talent."

Glenn's skills in oil painting and skills as a landscape architect draftsman complement each other.

"Painting really is looking at something and studying it," he said. "So it continues to help me at MU.

And in turn it makes my graphic renderings stronger. What I do here helps [my paintings], too."

The most satisfying part of painting for him is that he can record what he sees and how he feels.

"The reason I do landscapes is that I think people are losing their connection to America," he said.

"Landscape painting gives them an opportunity to sit back and see what's happening in the countryside, and how farmers and ranchers provide food for our tables," he said.

In his recently built home art studio, Glenn plans to create a series of paintings of his family's farm.

— JeongAn Choi

Concerts & Plays

SATURDAY, SEPT. 7

MU School of Music: The Missouri String Project open house will be 9 a.m.-1 p.m. in Whitmore Recital Hall.

TUESDAY, SEPT. 10

MU School of Music: The Missouri String Project open house will be 6-9 p.m. in Whitmore Recital Hall.

THURSDAY, SEPT. 12

University Theatre Series: The 11th annual "Life & Literature Series," featuring original and adapted student works, is at 7:30 p.m. Sept. 12-15 in the Corner Playhouse. This production is free and open to the public.

SATURDAY, SEPT. 21

Chinese Ethnic & Classic Dance Gala: To celebrate MU's International Week, the Shanghai Normal University dance troupe will perform a variety of ethnic and ancient Chinese dance at 7 p.m. at the Missouri Theatre.

TUESDAY, SEPT. 24

University Concert Series: "Blue Man Group: Experience the Phenomenon," a Las Vegas-style theatrical featuring percussion, comedy, and multi-media, will begin at 7 p.m. in Jesse Auditorium. For ticket information, call 882-3781.

SUNDAY, OCT. 6

"We Always Swing" Jazz Series: The Eldar Djangirov Trio will perform at 3:30 p.m. and 7 p.m. at Murry's. Tickets are available through Ticketmaster or by calling 449-3001.

University Concert Series: Aaron Neville, one of the famed Louisiana Neville Brothers, will perform at 6 p.m. at the Missouri Theatre. For ticket information, call 882-3781.

TUESDAY, OCT. 8

University Concert Series: The Hungarian State Folk Ensemble, complete with a full company of dancers and live orchestra, will perform "Gypsy Romance" at 7 p.m. in Jesse Auditorium. For ticket information, call 882-3781.

WEDNESDAY, OCT. 9

University Theatre Series: *Spring Awakening*, a Tony Award winner for Best Musical, explores the journey from youth to adulthood at 7:30 p.m. Oct. 9 through Oct. 12 at the Rhynsburger Theatre. For ticket information, call 882-7529.

SUNDAY, OCT. 13

University Theatre Series: *Spring Awakening*, a Tony Award winner for Best Musical, explores the journey from youth to adulthood at 2 p.m. For ticket information, call 882-7529.

WEDNESDAY, OCT. 16

University Concert Series: A capella group Straight No Chaser will perform as part of their Under the Influence tour at 7 p.m. at the Missouri Theatre. For ticket information, call 882-3781.

TUESDAY, OCT. 22

University Concert Series: *World Blues*, a celebration of American blues music's global influence, features the Taj Mahal trio, Vusi Mahlasela, Deva Mahal with Fredericks Brown. The concert will begin at 7 p.m. at the Missouri Theatre. For ticket information, call 882-3781.

THURSDAY, OCT. 24

University Concert Series: The Tedeschi Trucks Band, an 11-piece blues group, will perform at 7 p.m. in Jesse Auditorium. For ticket information, call 882-3781.

University Theatre Series: *The Summer In Gossensass*, a celebration of the two American actresses responsible for the first London production of Ibsen's *Hedda Gabler*,

at 7:30 p.m. Oct. 24-26 at the Corner Playhouse. For ticket information, call 882-7529.

SUNDAY, OCT. 28

"We Always Swing" Jazz Series: The Donald Harrison Quartet, featuring *A Night In Treme: The Musical Majesty of New Orleans*, will perform at 7 p.m. in Stotler Lounge in Memorial Union. Tickets are available through Ticketmaster or by calling 449-3001.

TUESDAY, OCT. 31

University Theatre Series: *The Summer In Gossensass*, a celebration of the two American actresses responsible for the first London production of Ibsen's *Hedda Gabler*, at 7:30 p.m. Oct. 31-Nov. 3 at the Corner Playhouse. For ticket information, call 882-7529.

SUNDAY, NOV. 3

University Concert Series: Mary Chapin Carpenter and Shawn Colvin share the stage for *An Acoustic Evening*, performing music from each of the artists' vast catalogues. The concert will begin at 7 p.m. at the Missouri Theatre. For ticket information, call 882-3781.

WEDNESDAY, NOV. 6

University Concert Series: Rock & Roll Hall of Famer Dr. John will perform at 7 p.m. at the Missouri Theatre. For ticket information, call 882-3781.

William Francis English Scholar-in-Residence: Candy Coburn, BA '98, is a nationally known country music artist who will perform at 7:30 p.m. in the Rhynsburger Theatre. A Q and A session will follow her performance. Free and open to the public.

SUNDAY, NOV. 10

University Concert Series: *Memphis, The Musical*, four-time Tony Award winner, will perform at 7 p.m. in Jesse Auditorium. For ticket information, call 882-3781.

WEDNESDAY, NOV. 13

University Concert Series: Country music artist Sara Evans will perform at 7 p.m. in Jesse Auditorium. For ticket information, call 882-3781.

THURSDAY, NOV. 14

University Theatre Series: *Fifth of July*, from Lanford Wilson, Missouri Native and one of the most celebrated writers in the American theatre, performs at 7:30 p.m. through Nov. 16, and at 2 p.m. Nov. 17 at the Rhynsburger Theatre. For ticket information call 882-7529.

TUESDAY, NOV. 19

University Theatre Series: *Fifth of July*, from Lanford Wilson, Missouri native and one of the most celebrated writers in the American theatre, performs at 7:30 p.m. through Nov. 21 at the Rhynsburger Theatre. For ticket information, call 882-7529.

THURSDAY, NOV. 21

University Concert Series: MU's Choral Union, University Singers, and the University Philharmonic will present "The Beauty & Brawn of Beethoven" at 7 p.m. in Jesse Auditorium. For ticket information, call 882-3781.

TUESDAY, DEC. 3

University Concert Series: For one night only, Moscow Ballet's *Great Russian Nutcracker*, will feature Tchaikovsky's classic score, beginning at 7 p.m. in Jesse Auditorium. For ticket information, call 882-3781.

SUNDAY, DEC. 8

"We Always Swing" Jazz Series: The Aaron Diehl Quartet, featuring Warren Wolf, will perform at 3:30 p.m. and 7 p.m. at Murry's. Tickets are available through Ticketmaster or by calling 449-3001.

University Concert Series: The legendary St. Louis Symphony will perform selections from Mozart and Mendelssohn at 7 p.m. at the Missouri Theatre. For ticket information, call 882-3781.

WEDNESDAY, DEC. 11

University Concert Series: The Nebraska Theatre Caravan will perform the holiday classic *A Christmas Carol* at 7 p.m. in Jesse Auditorium. For ticket information, call 882-3781.

Courses & Workshops

THURSDAY, SEPT. 5

Computer Training:

"Photoshop CS6 2a: Size & Color" will be offered at 8:30 a.m. in 25 Arts & Science.

"Photoshop CS6 2b: Changing Color" will be offered at 10:30 a.m. in 25 Arts & Science.

"Excel 2013 1a: Introduction" will be offered at 1 p.m. in 25 Arts & Science.

"Excel 2013 1b: Introduction" will be offered at 3 p.m. in 25 Arts & Science.

Registration is required online at training.missouri.edu or call 882-5000.

"Diversity 101": The Chancellor's Diversity Initiative developed this free online course for MU faculty and staff to promote diversity on campus. Two sessions of this interactive online class will be offered beginning Sept. 5 and Oct. 17. Register at cdi.missouri.edu/programs-services/diversity101/.

TUESDAY, SEPT. 10

Computer Training:

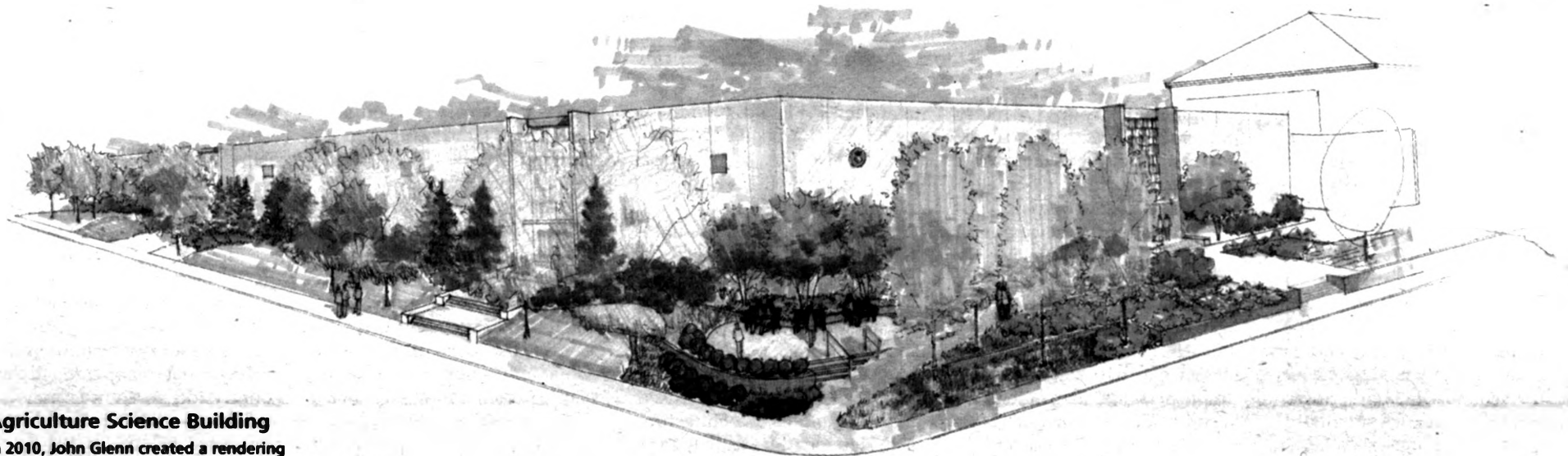
"HTML5 & CSS: Tables, Layout & Typography" will be offered at 8:30 a.m. in 25 Arts & Science.

"Webinar: Excel Pivot Tables & Charts" will be offered at noon online.

"Photoshop CS6 1a: Introduction to Photoshop" will be offered at 1 p.m. in 25 Arts & Science.

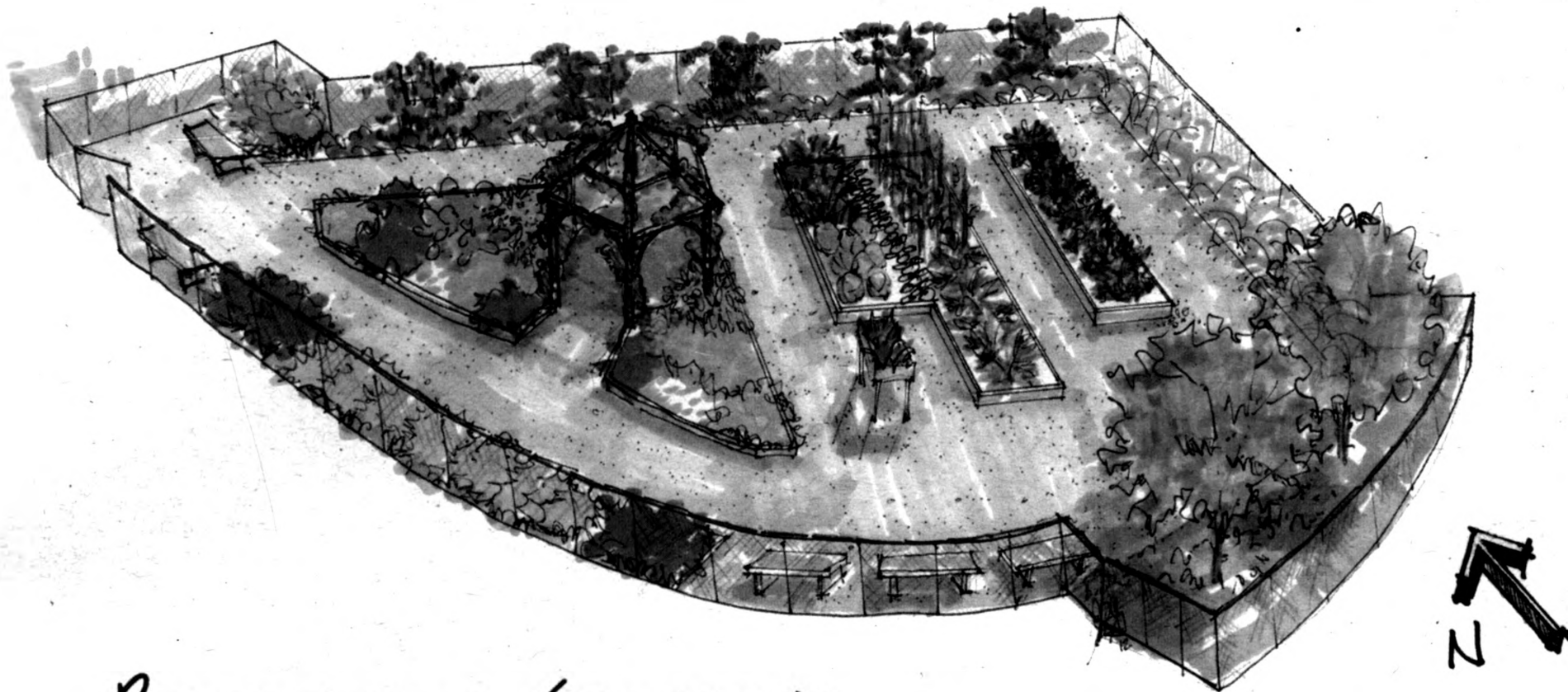
"Photoshop CS6 1b: Layers & Style" will be offered at 3 p.m. in 25 Arts & Science.

Registration is required online at training.missouri.edu or call 882-5000.



Agriculture Science Building

In 2010, John Glenn created a rendering based on the work of an architectural student's award-winning design of the landscape on the southwest side of the agriculture building. The landscape work began in spring 2012. Renderings courtesy of Campus Facilities.



PERSPECTIVE OF CHILDREN'S GARDEN

Children's Garden

In 2011, Glenn created this rendering of the future Children's Garden near Curtis Hall.

WEDNESDAY, SEPT. 11

Computer Training:

"Outlook 2013: Divide & Conquer Your Inbox" will be offered at 8:30 a.m. in 18 Arts & Science.

"Dreamweaver CS6 3: Tables & Templates" will be offered at 1 p.m. in 25 Arts & Science.

"Dreamweaver CS6 4: Navigation & Spry" will be offered at 3 p.m. in 25 Arts & Science.

Registration is required online at training.missouri.edu or call 882-5000.

THURSDAY, SEPT. 12

Computer Training:

"PowerPoint 3: Graphics & Animation" will be offered at 8:30 a.m. in 25 Arts & Science.

"InDesign CS6: Objects & Color" will be offered at 8:30 a.m. in 18 Arts & Science.

"PowerPoint 4: Charts & Customization" will be offered at 10:30 a.m. in 25 Arts & Science.

"InDesign CS6: Flexible Documents & Vectors" will be offered at 10:30 a.m. in 18 Arts & Science.

"Excel 2013: Functions" will be offered at 1 p.m. in 25 Arts & Science.

Registration is required online at training.missouri.edu or call 882-5000.

MONDAY, SEPT. 16

Computer Training:

"Access 2013: Fields & Tables" will be offered at 1 p.m. in 18 Arts & Science.

Registration is required online at training.missouri.edu or call 882-5000.

TUESDAY, SEPT. 17

Computer Training:

"Excel 2013 1a: Introduction" will be offered at 8:30 a.m. in 25 Arts & Science.

"Excel 2013 1b: Introduction" will be offered at 10:30 a.m. in 25 Arts & Science.

"Photoshop CS6 2a: Size & Color" will be offered at 1 p.m. in 25 Arts & Science.

"Photoshop CS6 2b: Changing Color" will be offered at 3 p.m. in 25 Arts & Science.

"Access 2013: Reports" will be offered at 3 p.m. in 18 Arts & Science.

Registration is required online at training.missouri.edu or call 882-5000.

WEDNESDAY, SEPT. 18

Computer Training:

"Dreamweaver CS6 5: CSS and Mobile Layout" will be offered at 1 p.m. in 25 Arts & Science.

"Access 2013: Queries" will be offered at 1 p.m. in 18 Arts & Science.

"Dreamweaver CS6 6: Fluid Grid Layout" will be offered at 3 p.m. in 25 Arts & Science.

Registration is required online at training.missouri.edu or call 882-5000.

THURSDAY, SEPT. 19

Computer Training:

"Web Design" will be offered at 8:30 a.m. in 18 Arts & Science.

"Intro to HTML5 & CSS" will be offered at 8:30 a.m. in 25 Arts & Science.

"Access 2013: Macros & Data" will

be offered at 1 p.m. in 18 Arts & Science.

"Access 2013: Customization & Charts" will be offered at 3 p.m. in 18 Arts & Science.

Registration is required online at training.missouri.edu or call 882-5000.

MONDAY, SEPT. 23

Community Development Academy:

An intensive five-day course Sept. 23-27 offered by the MU Extension Community Development Program. Register by Sept. 6. at muconf.missouri.edu/commdevelopmentacademy.

Computer Training:

"Visio 2013 Basics" will be offered at 8:30 a.m. in 25 Arts & Science.

"10747-Administering System Center 2012 Configuration Manager (three-day course)" will begin at 10 a.m. in 205B/C Locust Street Building.

Registration is required online at training.missouri.edu or call 882-5000.

TUESDAY, SEPT. 24

Computer Training:

"10747-Administering System Center 2012 Configuration Manager (3 Day Course)" will begin at 8 a.m. in 205B/C Locust Street Building.

"InDesign CS6: Accessibility" will be offered at 8:30 a.m. in 18 Arts & Science.

"Webinar: Sharing Videos Online" will be offered at noon online.

"Photoshop CS6: Repairing Images" will be offered at 1 p.m. in 25 Arts & Science.

"Photoshop CS6: Photo Adjust-

ments" will be offered at 3 p.m. in 25 Arts & Science.

Registration is required online at training.missouri.edu or call 882-5000.

WEDNESDAY, SEPT. 25

Computer Training:

"10747-Administering System Center 2012 Configuration Manager (three-day course)" will begin at 8 a.m. in 205B/C Locust Street Building.

"PowerPoint: Presentation Strategy" will be offered at 8:30 a.m. in 18 Arts & Science.

"InDesign CS6 1a: Intro" will be offered at 1 p.m. in 18 Arts & Science.

"InDesign CS6 1b: Basic Typesetting" will be offered at 3 p.m. in 18 Arts & Science.

Registration is required online at training.missouri.edu or call 882-5000.

THURSDAY, SEPT. 26

Computer Training:

"HTML5 & CSS: Links, Graphics & Structure" will be offered at 8:30 a.m. in 25 Arts & Science.

"Dreamweaver CS6 1a: Intro" will be offered at 8:30 a.m. in 18 Arts & Science.

"Dreamweaver CS6 1b: Images & Links" will be offered at 10:30 a.m. in 18 Arts & Science.

Registration is required online at training.missouri.edu or call 882-5000.

MONDAY, SEPT. 30

Computer Training:

"Excel 2013 1a: Intro" will be offered

at 8:30 a.m. in 18 Arts & Science.

"Excel 2013 1b: Intro" will be offered at 10:30 a.m. in 18 Arts & Science.

Registration is required online at training.missouri.edu or call 882-5000.

Exhibits

Bingham Gallery:

"Revealing Place" will be on display Sept. 2-26, with a reception Sept. 5 from 5 p.m. to 7 p.m.

"Dual Thesis Exhibition" by Chris Hall and Danielle Langdon will be on display Sept. 30-Oct. 24.

"Thesis Exhibition" by Ron Thompson will be on display Oct. 28-Nov. 7.

"Foundations Showcase" will be on display Nov. 11-21, with a reception Nov. 21 from 5 p.m. to 7 p.m.

The gallery, located in the Fine Arts Building, is open 8 a.m.-5 p.m. weekdays.

Ellis Library Colonnade:

"Divided Loyalties" will be on display through Oct. 26.

Colonnade exhibits may be viewed during regular Ellis Library hours.

Museum of Art and Archaeology:

"14 Rural Absurdities" by Tom Huck, an exhibit showcasing large woodcut prints depicting humorous events that allegedly occurred in Huck's Potosi, Mo., boyhood home.

The museum, located in Pickard Hall, is open 9 a.m.-4 p.m. Tuesday-Friday, 9 a.m.-8 p.m. Thursday, and from noon-4 p.m. Saturday and Sunday.

State Historical Society:

"The Missouri State Capitol in Art/"



Look Familiar?

In 2007, Glenn created the design for the University of Missouri architectural signage at several campus entrances.

Art in the Missouri State Capitol," an exhibit that features Impressionist paintings by Jefferson City artist Lester Parker, will be on display through December.

The gallery in Ellis Library is open 8 a.m.-4:45 p.m. Monday-Friday, and 8 a.m.-3:30 p.m. Saturday

Lectures & Seminars

THURSDAY, SEPT. 5

Biomedical Sciences Seminar Series: David Ford, professor of biochemistry and molecular biology at St. Louis University, will present "Plasmalogens: A Trojan Horse Wielding Mediators of Cardiovascular Disease, Inflammation and Environmental Oxidants" at 1 p.m. in the Adams Conference Center in the Vet Med Building.

Nutrition & Exercise Physiology Seminar Series: Charles Menifield, professor of public affairs, will present "Public Transportation and the Fight to End Obesity" at 4 p.m. in Acuff Auditorium in School of Medicine.

FRIDAY, SEPT. 6

Biochemistry Seminar Series: Gavin King, assistant professor of physics and biochemistry, will present "Using the Force: Novel Single Molecule Vistas of the General Secretory System" at 1 p.m. in Monsanto Auditorium in School of Medicine.

Monroe-Paine Distinguished Lecture In Public Affairs: Antonio Tavares, associate professor of international relations and public administration at the University of Minho (Braga, Portugal), will present "The Institutional Collective Action Framework: An Application to Regional Governance in Europe" at 1:30 p.m. in S207 Memorial Union.

Chemistry Colloquium: Jennifer Swift, associate professor of chemistry at Georgetown University, will talk about chemical reactions at 3:30 p.m. in 103 Schlundt Hall.

SATURDAY, SEPT. 7

Saturday Morning Science: Steven Nagle, retention specialist in mechanical and aerospace engineering, will present "From Earth Orbit to a Runway in One Hour" at 10:30 a.m. in Monsanto Auditorium.

TUESDAY, SEPT. 10

Food for the 21st Century: Robert Brown, professor of mechanical engineering at Iowa State University, will present "Thermal Depolymerization of Carbohydrates and Proteins to Sugars and Hydrocarbons" at 4 p.m. in 105 Ag Engineering Building.

WEDNESDAY, SEPT. 11

Diversity in Action Seminar Series: Kristin Metcalf-Wilson, professor of nursing, will present "The Big Picture: The Status of Women's Health in the State of Missouri" at noon in S206 Memorial Union.

THURSDAY, SEPT. 12

3rd Annual MU Research Core Facilities Day: Attend seminars and workshops, and meet with representatives from scientific vendors at "Model Systems: Putting the Puzzle Pieces Together" at MU's Research Core Facilities and Research Centers" in Bond Life Sciences Center.

Mizzou Reads Speaker: Kohl Creclius is the CEO and co-founder of non-profit Krochet Kids International, whose mission is to make a sustainable impact of global poverty via handmade goods. He will speak at 7:30 p.m. in Jesse Auditorium.

FRIDAY, SEPT. 13

Workplace Diversity Series: Noor Azizan-Gardner, assistant deputy chancellor for diversity and chief diversity officer, will present "A Culturally Competent Mizzou Begins with Me and You" at noon in Student Center 2205. Please register at diversity.missouri.edu/workplace-diversity/.

SATURDAY, SEPT. 14

Saturday Morning Science: Meera Chandrasekhar, professor of physics and astronomy, will present "Blind to Polarization: What Humans Don't See" at 10:30 a.m. in Monsanto Auditorium.

MONDAY, SEPT. 16

Corps of Discovery Lecture: Jeff Taylor, professor of genetics and animal sciences, is heralded as one of the world's top experts in cattle DNA. He will present "Beef Up on Cattle DNA: What It Reveals About Human History" at 3:30 p.m. in Stotler Lounge in Memorial Union, with a dessert reception to follow. All are invited to attend this free event.

WEDNESDAY, SEPT. 18

Delta Gamma Foundation Lectureship: Aimee Mullins, a Georgetown University graduate, NCAA Division 1 track & field athlete, and double amputee, will speak about ability, disability and adversity at 7:30 p.m. in Jesse Auditorium. This event is free for MU students, and \$10 for the public.

THURSDAY, SEPT. 19

Distinguished Lecture Series in Psychological Sciences: Brenda Major, distinguished professor of psychology, University of California-Santa Barbara, will present "The Psychological and Physical Costs of Perceived Discrimination" at 3:30 p.m. in S107 Memorial Union.

SATURDAY, SEPT. 21

Saturday Morning Science: Alan Whittington, professor of geological sciences, will present "How Old is a Rock?" at 10:30 a.m. in Monsanto Auditorium.

TUESDAY, SEPT. 24

Civil Conversations Series: Join faculty and students for an open dialogue exploring ways to improve teaching and learning environments at MU by increasing civility and respect. The discussion will begin at 4 p.m. in N214 Memorial Union.

Food for the 21st Century: Allison Ostdiek, research fellow of veterinary pathobiology, will present at 4 p.m. in 105 Ag Engineering Building.

SATURDAY, SEPT. 28

Saturday Morning Science: Judy Wall, professor of biochemistry, will present "Microbial Methylation of Mercury: A Solution to the Mystery of Neurotoxin Production!" at 10:30 a.m. in Monsanto Auditorium in the Bond Life Sciences Center.

SATURDAY, OCT. 5

Saturday Morning Science: Jim Schoelz, professor of plant sciences, will present "Food Insecurity: Tracking Plant Disease Epidemics in the United States" at 10:30 a.m. in Monsanto Auditorium in the Bond Life Sciences Center.

TUESDAY, OCT. 8

Food for the 21st Century: Christine Costello, assistant research professor of biological engineering, will present at 4 p.m. in 105 Ag Engineering Building.

WEDNESDAY, OCT. 9

Diversity in Action Seminar Series: Soren Larsen, professor of geography, will present "Return to

a Native Land: Place-Based Politics among the Cheslatta Carrier Nation in British Columbia" at noon in S110 Memorial Union.

FRIDAY, OCT. 11

Workplace Diversity Series: Miguel Ayllon, president of MU Voz Latina and international outreach coordinator for the college of engineering, will present "Exploring the Experiences of Latino Employees at MU: A Quest for Understanding, Reconciliation and Leadership" at noon in Student Center 2206C. Please register at diversity.missouri.edu/workplace-diversity/.

SATURDAY, OCT. 12

Saturday Morning Science: Cathy Vogelweid, associate professor of veterinary pathobiology, will present "Save the Whole Family: Disaster Preparedness for Animals and Their Owners" at 10:30 a.m. in Monsanto Auditorium in the Bond Life Sciences Center.

MIZZOU WEEKLY

Volume 35 No. 3

mizzouweekly.missouri.edu

A publication for the faculty and staff of the University of Missouri, published every Thursday during the academic year and twice a month during the summer by Publications and Alumni Communication, a department of University Affairs, 497 Reynolds Alumni Center, 882-7357. News deadline is noon Thursdays.

Editor
Mark Barna

Advertising
Scott Reeter, Ryan Walker

Designer
Rebecca Fels

Photographers
Nicholas Benner, Rob Hill

Writers
Kelsey Allen, JeongAn Choi

Got an event coming up? Let us know. Email mizzouweeklycalendar@missouri.edu

SATURDAY, OCT. 19

Saturday Morning Science: Heather Leidy, assistant professor of nutrition and exercise physiology, will present "Mom Was Right: Breakfast Is the Most Important Meal of the Day" at 10:30 a.m. in Monsanto Auditorium.

TUESDAY, OCT. 22

Food for the 21st Century: Peter Ma, professor of materials sciences and biomedical engineering at the University of Michigan, will discuss biomedicine at 4 p.m. in 105 Ag Engineering Building.

SATURDAY, NOV. 2

Saturday Morning Science: Bing Zhang, professor of biological sciences, will present "Am Not I a Fly Like These?" at 10:30 a.m. in Monsanto Auditorium.

TUESDAY, NOV. 5

Food for the 21st Century: Ya David Guo, postdoctoral research associate of biological engineering, will present at 4 p.m. in 105 Ag Engineering Building.

FRIDAY, NOV. 8

Workplace Diversity Series: Marlo Goldstein Hode, graduate coordinator of programming and professional development at the Chancellor's Diversity Initiative, will present "Cultural Values, Conflict and the Workplace" at noon in S206 Memorial Union. Please register at diversity.missouri.edu/workplace-diversity/.

SATURDAY, NOV. 9

Saturday Morning Science: Jerry Frank, assistant professor of history, will present "Bugs, Burns, and

Beauty: Managing the Forests of Rocky Mountain National Park" at 10:30 a.m. in Monsanto Auditorium.

WEDNESDAY, NOV. 13

Diversity in Action Seminar Series: Jack Draper, professor of romance languages and literature, will present "Racial Democracy and Interracial Marriage in Brazil and the U.S." at noon in S110 Memorial Union.

THURSDAY, NOV. 14

MU School of Music: This "Gig Etiquette" panel, featuring Richard King, Dr. Arthur White, and veteran Columbia-based freelance musicians, will explore the best practices in identifying and maintaining performance opportunities and building relationships with venues. The discussion will begin at 3 p.m. in Whitmore Recital Hall.

SATURDAY, NOV. 16

Saturday Morning Science: Joan Strassmann, professor of biology at Washington University in St. Louis, will present "Life's Biggest Mystery: What Makes Up an Organism?" at 10:30 a.m. in Monsanto Auditorium.

SUNDAY, NOV. 17

Chancellor's Distinguished Visitors Series: David Williams, professor at the Harvard School of Public Health, will present "Making American Healthier: What Can Each of Us Do?" at 7 p.m. at the Missouri Theatre.

TUESDAY, NOV. 19

Food for the 21st Century: Yongjie Yang, assistant professor of neuroscience at Tufts University-Boston, will present the latest in neuroscience discoveries at 4 p.m. in 105 Ag Engineering Building.

Films

FRIDAY, SEPT. 6

Museum of Art & Archaeology: A Separation (2011), directed by Asghar Farhadi and starring Leila Hatami and Payman Moadi, will be shown at 7 p.m. in 106 Pickard Hall. This showing is free and open to the public. The screening is in conjunction with the Daniel Boone Regional Library's One Read program.

THURSDAY, SEPT. 19

Museum of Art & Archaeology: *Beauty and the Beast* (1945), directed by Jean Cocteau and Rene Clement, and starring Josette Day and Jean Marais, will be shown at 7:30 p.m. in 106 Pickard Hall. This showing is free and open to the public.

FRIDAY, OCT. 4

Museum of Art & Archaeology: *Tom Jones* (1963), directed by Tony Richardson and starring Albert Finney and Susannah York, will be shown at 7 p.m. in 106 Pickard Hall. This showing is free and open to the public.

THURSDAY, OCT. 17

Museum of Art & Archaeology: *A Touch of Spice ["Politiki Kouzina"]* (2003), directed by Tassos Boulmetis and starring Georges Corraface and Tassos Bandis, will be shown at 7 p.m. in 106 Pickard Hall. This showing is free and open to the public.

FRIDAY, NOV. 1

Museum of Art & Archaeology: *A Fish Called Wanda* (1988), directed by Charles Crichton and starring John Cleese, Jamie Lee Curtis, and Kevin Kline, will be shown at 7 p.m. in 106 Pickard Hall. This showing is free and open to the public.

THURSDAY, NOV. 21

Museum of Art & Archaeology: *Night of the Shooting Stars* (2008), directed by Paulo and Vittorio Taviani and starring Omero Antonutti and Margarita Lozano, will be shown at 7 p.m. in 106 Pickard Hall. This showing is free and open to the public.

FRIDAY, DEC. 6

Museum of Art & Archaeology: *Bedazzled* (1967), directed by Stanley Donen and starring Eleanor Bron, Peter Cook, Dudley Moore, and Raquel Welch, will be shown at 7 p.m. in 106 Pickard Hall. This showing is free and open to the public.

Special Events

THURSDAY, SEPT. 5

Tomato Festival: Bradford Research Center invites the public to sample 200 varieties of tomatoes and peppers, as well as salsa, relish and sauces from local restaurants. The festival will be 4-7:30 p.m. at the research center, located at 4968 Rangeline Road.

FRIDAY, SEPT. 6

Black & Gold Friday: The Mizzou Store is offering a 25 percent discount on Mizzou clothing and gift items.

SATURDAY, SEPT. 14

MU Voice Symposium & Vocal Arts Festival: Join vocal experts and performers for the second annual MU Voice Symposium and Vocal Arts Festival 10 a.m.-3 p.m. at the Missouri Theatre Center for the Arts.

WEDNESDAY, SEPT. 18

Arts & Science Fall Welcome: Visit with representatives from all departments to learn what the college has

to offer, enjoy free pizza and a T-shirt, and watch the MU Improv Troupe perform 11 a.m.-1 p.m. in Lowry Mall.

THURSDAY, SEPT. 26

MU Art-I-Fact Gallery Crawl: Enjoy an evening of art, culture, music and fun with food and prizes during the MU Campus Gallery and Museum Crawl, beginning at 4 p.m. Visit artifact.missouri.edu for more information and a map of locations.

FRIDAY, SEPT. 27

Black & Gold Friday: The Mizzou Store is offering a 25 percent discount on Mizzou clothing and gift items.

MONDAY, SEPT. 30

Fund the Drive for Nurses Golf Tournament: The 13th annual tournament which benefits the MU Sinclair School of Nursing will be held at the Columbia Country Club. Register a team, sponsor a hole or showcase your company or organization. Please visit <http://nursing.missouri.edu/giving/golf-tournament/index.php> for registration and other contact information.

FRIDAY, OCT. 18

Black & Gold Friday: The Mizzou Store is offering a 25 percent discount on Mizzou clothing and gift items.

John Miles Foley Memorial A&S Golf Tournament: The College of Arts & Science is pleased to host this event to benefit the college's faculty and students. The event will begin at 11:30 a.m. at the Columbia Country Club. Contact Amanda Schlink at 884-4482 to register your four-person team by Oct. 4.

FRIDAY, OCT. 25

Black & Gold Friday: The Mizzou Store is offering a 25 percent discount on Mizzou clothing and gift items.

From COPING on Page 1

900 hospital employees supported through peer mentoring. After an eight-hour training program, team members work to care for the caregivers through one-on-one or group mentoring sessions. Scott said she's seen the culture

'How can we provide better care and support for the caregiver, enabling the clinician to care for themselves so they are ready to care for the next patient?' asked Sue Scott, patient safety coordinator at MU Health Care.

of support evolve at the hospital. "Now whenever we have an event that could be disturbing, there is a heightened awareness for recognizing the need to support one another," Scott said. That proactive way of thinking is leading to more informal mentoring sessions. "Just that momen-

tary pause to show that somebody cares about you as an individual [makes a difference]," Scott said.

In 2009, the forYOU Team received the HOPE Award from the Medically Induced Trauma Support Services organization for the program's innovative model. In 2012, the team was recognized with the Cheers Award from the Institute for Safe Medication Practices for the pioneering efforts to support clinicians.

Other hospitals are taking notice and reaching out for ideas on how to implement similar programs in their own facilities. Clinician support teams are now popping up around the country. Scott and Hirschinger have been actively involved with assisting several facilities with the establishment of their own forYOU Team.

"It's a lesson in civility for health care. How can we provide better care and support for the caregiver, enabling the clinician to care for themselves so they are ready to care for the next patient?" Scott said. "When you change that attitude and provide a nurturing environment, you change habits, and that changes the culture."

— Kelsey Allen



2013 Monroe-Paine Distinguished Lecture in Public Affairs

Sponsored by the Harry S Truman School of Public Affairs

"The Institutional Collective Action Framework: An Application to Regional Governance in Europe"

Presented by



Dr. Antonio Tavares

Associate Professor, Department of International Relations & Public Administration School of Economics & Management, University of Minho, Braga, Portugal

Friday, September 6th - 1:30 p.m.
S207 Memorial Union, Todd Room

For more information on Professor Tavares, please visit our web page: truman.missouri.edu/calendars



PHOTO BY STEVE DEPOLO

Putting the orange in meatballs

CAFNR researcher adds healthful citrus fiber to an Italian favorite

AMERICANS DON'T GET ENOUGH fiber in their fast food diets, doctors say, which can cause various health problems.

A graduate student at the University of Missouri is doing her part to get fiber into people's diet.

Lab Work

Researcher Ayca Gedikoglu explores how to make popular foods more healthful.

Her plan? Creating a hybrid of meatballs and oranges.

Ayca Gedikoglu, a PhD candidate in food science at the College of Agriculture, Food and Natural Resources, tested various amounts of citrus fiber in ground beef meatballs. Her intention is to see if the fiber, with its accompanying health benefits, adversely changes the texture and cooking characteristics of the meatballs.

The citrus is one more ingredient to making the meatballs.

In one test, Gedikoglu divided lean round into three sets of meatballs. Into one set she added citrus powder equaling one percent of the meat's weight. The other sets got 5 percent and 10 percent citrus. Everything then headed for the oven.

So how did the orange-laced meatballs come out? Fiber increased the cooking yield of the meatballs — meaning orange-beef meatballs were heartier than their equivalent beef-alone meatballs, Gedikoglu said. Citrus fiber added a little red and yellow coloring to

the meatballs, but this was also acceptable, particularly at the 1 percent and 5 percent citrus levels.

Beginning this fall, Gedikoglu will put her meatballs to taste tests with Mizzou students, faculty and staff. She will also evaluate citrus powder's potential antioxidant benefits. "Citrus fruits, particularly their peels, are rich with flavonoids," she said. "I am going to evaluate the presence of these antioxidants, their antioxidant power and also their potential to reduce lipid oxidation in ground beef meatballs."

— Randy Mertens

SAVE THE DATE!
MAY 20-21, 2014

Celebration of
TEACHING

University of Missouri



Who will join this impressive list of keynote speakers?



2010
Dan Heath



2011
Cole Camplese



2012
Sir Ken Robinson



2013
Mark Milliron



2014
??

We want to hear from you!

Do you have a keynote speaker suggestion for the 2014 Celebration of Teaching?

Do you have an idea for a concurrent session for the 2014 Celebration of Teaching?

Submit your thoughts at: celebration.missouri.edu

Mark your
calendars NOW
for the
2014 Celebration
of Teaching on
May 20-21, 2014.

From MED DIVERSITY on Page 1

diverse backgrounds.

The School of Medicine is also connected with support organizations such as the Minority Association of Pre-Health Students, the Multicultural Center and the Gaines/Oldham Black Culture Center.

In early 2011, MU Health System Vice Chancellor Harold A. Williamson Jr. appointed leaders to the Diversity Advisory Council, which seeks to increase diversity and inclusion.

"A diverse faculty, workforce and student body is essential to providing an environment that fosters healing and learning," Williamson said. "We believe that patients, students and employees thrive in a culture that is welcoming and respectful."

Soon after the council's formation, the council leaders undertook a multiphased study to assess the climate for diversity throughout the MU Health System, said Mary Jenkins, public relations manager. The purpose of the study was to capture a base-

line assessment of the climate and to make data-driven decisions related to what was learned.

One of the recommendations was that health managers and physicians receive training in diversity and inclusiveness, Jenkins said. Since then, more than 60 have undergone training at the National Inclusion Institute for Healthcare, she said.

What's more, efforts are underway to increase faculty diversity. "We have seen concerted efforts in recruiting diverse faculty with exciting positive results in the schools of nursing and medicine," said Noor Azizan-Gardner, MU's chief diversity officer.

MU and the School of Medicine's definition of diversity is broad; it is not limited to race. It encompasses people of differing genders, languages, religious beliefs, sexual orientations, abilities and disabilities, national and geographic origins, socioeconomic class, veterans' status and political views.

Does your child frequently repeat or prolong sounds, syllables, or words when speaking?

If so, and if your child is between the ages of 3 and 6 years, then your child may qualify to participate in a research study on cognition, language development, and stuttering.

Testing may be completed in Columbia or St. Louis.

Participants and their parents will be compensated for their time.

To learn more, please contact:

Dr. Stacy Wagovich, Dept. of Communication Science & Disorders
University of Missouri, Columbia, MO
fluency@missouri.edu | 573-882-2969

QUANTUM
WIRELESS INTERNET.COM

HIGH SPEED WIRELESS INTERNET SERVICE PROVIDER
for RESIDENTIAL, COMMERCIAL AND MOBILITY.

573-256-1166

"No excuses. No BS. We care about our customers."

THERAPEUTIC MASSAGE

EMPLOYEE		NON-EMPLOYEE
\$40	1/2 HR	\$45
\$60	1HR	\$75
\$75	1.5HR	\$90

Monday-Thursday by appointment.
573-884-1312

Deep Tissue/Medical/Sports/Relaxation Massage

Gift Certificates available

Jeff Rioux, LMT
Healthy for Life,
T.E. Atkins UM Wellness Program

University Libraries
University of Missouri

Digitization Information Page

Local identifier MizzouWeekly(print)

Source information

Format Newspaper
Content type Text with images
Source ID Duplicate copies University Archives weeded out
Notes

Capture information

Date captured July-December, 2022
Scanner manufacturer Plustek OpticBook
Scanner model A300 Plus
Scanning system software Book Pavilion
Optical resolution 600 dpi
Color settings 8 bit grayscale for majority of pages;
 24 bit color for color illustrations/portraits/photographs
File types tiff
Notes

Derivatives - Access copy

Compression Tiff: LZW compression
Editing software Adobe Photoshop 2022
Resolution 600 dpi
Color same as captured
File types pdf created from tiffs
Notes Images cropped, straightened, and brightened.