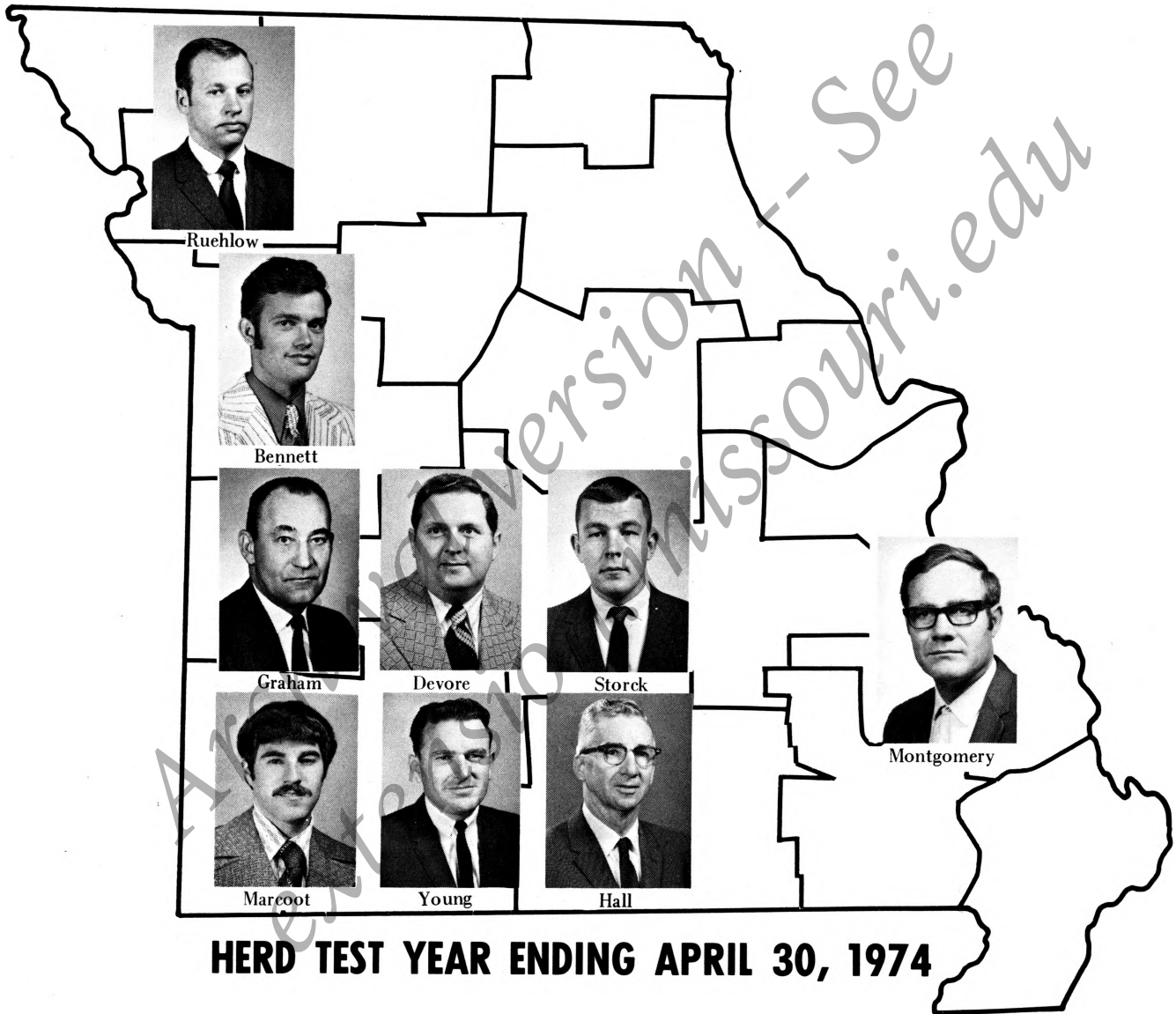


# ANNUAL MISSOURI DHIA SUMMARY



University of Missouri-Columbia Extension Division Missouri DHI Federation Cooperating



## FOREWORD

The cover picture of the 1973-74 Annual Missouri DHI Summary is of the University of Missouri Area Dairy Specialists Extension Staff. Their picture is located in the geographical area where they are assigned. We hope that you are or will become acquainted with your local Area Dairy Specialist. Each of these Area Dairy Specialists are qualified by training provided by the University of Missouri Dairy Department as well as their formal education. They are dedicated to providing up to date information for the operation of your dairy business. Area Dairy Specialists play an important role in the DHI program as they are active working with local DHI Associations, training DHI Supervisors, and working with dairymen in interpretation and use of DHI records. You can contact your Area Dairy Specialists by calling your local University of Missouri Extension office or calling them at their respective office.

George Graham, Courthouse, Nevada, Mo. 64772 - phone 417/667-7203

Hensley Hall, Courthouse, Houston, Mo. 65483 - phone 417/967-3862

Dr. Archie Devore, RDI Bldg, Room 900, Belcrest & E. Trafficway, Springfield, Mo. 65802 - phone 417/862-9284

Robert Montgomery, Mercier Bldg., Perryville, Mo. 63775 - phone 314/547-4504

Dr. Roger Bennett, 2820 S. Highway 291, Independence, Mo. 64057 - phone 816/373-5500

Robert Ruehlow, Courthouse, Maysville, Mo. 64469 - phone 816/449-5811

Harold Storck, Courthouse Annex, Lebanon, Mo. 65536 - phone 417/532-7126

Ronald D. Young, Courthouse Box 168, Ozark, Mo. 65721 - phone 417/485-2466

Roger Marcoot, Post Office, Cassville, Mo. 65625 - phone 417/847-3161

The Area Dairy Specialists are located in areas where dairying is concentrated. They serve 57 counties and 69% of the dairy cows in the state of Missouri. In those areas where we do not have an Area Dairy Specialist, there is an Extension Specialist who carries a secondary responsibility of dairy. If you are in one of those areas and desire help from your University of Missouri Extension Service, call your County Extension office.

The Missouri DHI Testing Center continues to grow. At the present time we are testing some 28,000 cows, using two Mark II Milk-O-Testers. If you are in the Springfield area we would encourage you to drop by the Missouri DHI Testing Center located on South Campbell Street.

The Missouri DHI Federation Board has been active in the National Dairy Herd Improvement Association. Carl Schneider, served as delegate, and Ed Steele, President of the Missouri DHI Federation, attended the National DHI Annual Meeting which was held in San Antonio.

Missouri has approximately 50,000 cows on all forms of DHI testing. During the past six years the production testing program has increased by 17,500 cows to the present 50,000 cows. This is an increase of 54% over a six year period. There appear to be several reasons for this increase in participation in DHI programs. Among these are more better paid and better trained DHI Supervisors, concentrated effort on dairymen and Extension workers to enroll more in the program and the recognition by dairymen that it does not cost to be on a DHI testing program but pays.

The Missouri DHI Federation Board of Directors are pictured on the inside of the back cover. They have given generously of their time and ability and handling of the business matters and policy decisions of the Missouri DHI Federation. All members of the DHI program in the state of Missouri are indebted to them for their service.

It is hoped that this issue of the Missouri DHI Summary for the testing year 1973-74, will be of benefit to DHI members and dairymen of Missouri enabling them to continue to improve their dairy cattle and milk production.



Rex E. Ricketts  
State Specialist  
Dairy Husbandry

ANNUAL D.H.I.A. SUMMARY

For Records Completed Between  
May 1, 1972 and April 30, 1974

Contents

Managing Your Dairy As A Business.....	1
Summary of Missouri Official Records for 1973-74.....	4
The 450-500-550-600 Clubs.....	5
Class Leaders For Milk.....	7
Class Leaders For Fat.....	10
High Herds.....	13
Production Efficiency Winner.....	14
Production Efficiency Winner.....	15
Supervisor Efficiency Awards.....	16
Pictures of Interest.....	17
Supervisor Length of Service.....	18
Herd Records By County.....	19
Association Members.....	26
Association Summaries.....	30
Districts of the Mo. Dairy Herd Improvement Fed.....	31
Pictures of Interest.....	32
Missouri Dairy Herd Improvement Federation Board of Directors.....	33



MANAGING YOUR DAIRY BUSINESS

Businessmen need clearly defined goals and objectives. Goals and objectives established for your dairy business at this time will be a major factor in the profitability of your business in the years to come.

In order to establish objectives that are obtainable and profitable it is important to use all the available resources. The following tables in the Annual DHI Summary are provided to give you, the dairy businessmen, a greater insight into the dairy business.

The summarized data can be used by you to establish goals and to evaluate your progress through management decisions in accomplishing these goals.

Table 1 shows the progress that has been made in the milk production in the last six years.

TABLE 1. Production Per Cow by Years, Lb.

Year	U.S. DHIA		Missouri DHIA		U.S., All Cows		Missouri, All Cows	
	Milk	Fat	Milk	Fat	Milk	Fat	Milk	Fat
1969	12,553	476	11,874	452	9,434	346	8,766	324
1970	12,750	483	11,783	445	9,747	357	8,938	326
1971	13,000	489	11,776	441	10,009	366	9,116	332
1972	13,226	496	12,154	450	10,250	377	9,365	342
1973			12,400	464	10,125	372	9,521	347
1974			12,107	451				

Our milk production per cow decreased by 293 pounds per cow during the last year and 14 pounds of butterfat. Missouri DHI cows averaged 12,107 pounds of milk and 451 pounds of butterfat. The decrease in milk production per cow depicts economic conditions of the dairy industry in 1973 and 74 in which high feed cost, especially for concentrates, occurred and therefore, less concentrates were fed. In 1973 an average of 5200 pounds of concentrates were fed and in 1974, 5100 pounds of concentrates were fed. This is an average decrease of 100 pounds of concentrates per cow with a 3:1 milk to concentrate ratio. This would account for the 300 pound decline in milk production illustrated in this summary.

Table 2 provides a comparison of milk and fat for your particular breed. Increases in milk production per cow were made in the following registered breeds; Guernseys, 100 pounds; Jerseys, 288 pounds; Milking Shorthorns, 65 pounds registered others, 12 pounds. In grade breeds, Guernsey, 125 pounds; Jerseys, 522 pounds. Overall registered dairy cattle produced an average of 223 pounds less per cow while grade animals were down 352 pounds per cow. The highest producing breed was registered Holsteins averaging 13,161 pounds of milk, 478 pounds fat with a 3.6% test.

TABLE 2. Average Production by Breeds, Missouri

Breed	Registered					Grade				
	Number		Milk lbs.	Fat lbs.	Fat %	Number		Milk lbs.	Fat lbs.	Fat %
	Herds	Cow Years				Herds	Cow Years			
Brown Swiss	9	489.98	10,499	411	3.9	2	48.29	10,542	405	3.8
Guernsey	23	1462.90	9,945	468	4.7	8	416.12	10,675	481	4.5
Holstein	87	5868.43	13,161	478	3.6	351	23301.46	12,351	447	3.6
Jersey	20	960.04	8,674	432	5.0	8	449.26	8,575	430	5.0
M. Shorthorn	3	133.25	9,176	346	3.8					
Other	2	131.42	9,699	387	4.0	15	886.77	10,228	415	4.1
All	144	9046.02	11,912	465	3.9	384	25101.90	12,177	446	3.7

Herd size is an important factor in the dairy business. Table 3 illustrates the changes in the herd size which occurred during the last 5 years. In 1968-69, 44% of the herds were over 50 cows, (214 of 481 herds). Sixty-one percent of the herds in 1973-74 were over 50 cows (322 of 528). There has been an increase of 61 herds in the 50-79 herd size and 57 herds in the over 80 cows during the last 5 years. Five years ago the average herd size on DHI was 53 cows and the 1973-74 average herd size was 65 cows.

TABLE 3. Relation of Herd Size to Production and Income

Herd Size, Cows	1968-69					1973-74				
	Number Herds	Milk lbs.	Fat lbs.	Value Prod.\$	Inc. F.C.\$	Number Herds	Milk lbs.	Fat lbs.	Value Prod.\$	Inc. F.C.\$
Under 10	3	10,105	456	475	238	1	9,714	491	602	275
10-19	21	11,289	464	566	309	6	11,643	453	849	416
20-29	46	11,605	439	596	335	37	11,913	447	815	383
30-39	102	11,800	452	617	353	73	11,842	438	821	404
40-49	95	11,896	450	631	372	89	12,466	460	877	423
50-79	161	11,936	453	640	380	212	12,078	456	862	438
80+	53	11,888	453	674	408	110	12,098	446	860	424

Table 4 illustrates the most important goal in the dairy business; high milk production. Herds that averaged 15,249 pounds of milk per cow had \$254 more income over feed cost per cow than herds that averaged 10,433 pounds. On a 65 cow herd this could mean \$16,500 increase per year in income over feed cost. A herd averaging 15,000 pounds of milk per cow can be milked in the same facilities with about the same labor as the 10,000 pound herd. This means that the fixed costs are similar. An advantage of increased milk production is that it spreads more units of milk production over the same fixed cost resulting in increased profit. In summary, dairymen, many times, may have as much or more profit opportunity in getting better by increasing milk production rather than getting bigger. If a dairyman is to increase the size of the herd, he must maintain or increase milk production per cow. It is important also to note that as the milk production increased the amount of concentrates fed increased, also the feed cost increased, but the most important factor is that income over feed cost was highest with the highest producing cows.

TABLE 4. Relation of Production to Income

Production Milk	lbs./cow Fat	Number of Herds	Value of Product, \$	Conc. Fed	Feed Costs	Income/Feed Costs, \$
6,971	271	13	480	3613	311	168
9,017	329	37	623	3784	340	282
10,433	376	73	725	4732	388	338
11,457	426	143	814	5096	433	381
12,691	473	119	903	5391	442	461
13,733	520	93	985	5501	467	518
15,249	571	32	1086	6063	494	592
16,434	631	18	1172	6036	540	632

High percent Days in Milk (DIM) is desirable. Table 5 shows that the majority of the herds averaged nearly 86% or more days in milk; percent days in milk will often reflect the reproduction problem. If cows are not conceiving and calving and remain in the herd, this will be reflected in a lower percent days in milk. Percent DIM above 90 usually reflects a high culling rate or adding purchased cows and first calf heifers to the milking herd.

TABLE 5. Per Cent Days In Milk

% D I M	No. of Herds	Milk, lbs.	Income Over Feed Cost \$
71	10	8,600	260
78	26	10,311	361
83	188	11,647	401
86	277	12,653	457
91	26	12,540	404
94	1	10,543	364

Feed cost represents approximately more than half of the cost of producing milk for the dairy business. In any business wise management of larger cost items and adjustments in the feeding program often times will greatly increase the milk production and also income. Table 6 indicates most dairymen feed 2 and 2.5 pounds of forage for every 100 pounds of body weight. Dairymen who fed more than 2.5 pounds of forage per hundred pounds of body weight had lower milk production. They also fed less concentrates or milking ration and the end result was a lower income over feed cost.

TABLE 6. Rate of Forage Feeding

Lbs. Per Hundred Lbs. Body Weight	No. of Herds	Milk Lbs.	Lbs. Per Hundred Lbs. Body Weight	No. of Herds	Milk Lbs.
0.1-1.3	6	12,084	2.2-2.3	141	12,357
1.4-1.5	2	13,889	2.4-2.5	133	12,025
1.6-1.7	11	12,122	2.6-2.7	64	11,785
1.8-1.9	38	12,226	2.8-2.9	16	11,572
2.0-2.1	112	12,177	3.0-9.9	5	9,958

Table 7 shows the Annual Pounds of Concentrate Fed per cow. You will note that as concentrate per cow increased, milk production also increased as well as feed cost. However, it is also important to note that cows fed from 5,000 to 6,900 pounds of concentrates had the same average income over feed cost which were the two highest income over feed cost groups. As the herds fed more than 7,000 pounds of concentrates per cow income over feed cost decreased to \$385 compared to the \$458 in the high two groups.

TABLE 7. Annual Pounds of Concentrate Fed

Concentrates/Cow	Number of Herds	Milk Lbs.	Conc. Cost,\$	Total Feed Cost,\$	Inc./Feed Cost,\$
2000-2900	13	7,798	136	289	291
3000-3900	81	10,201	172	348	388
4000-4900	176	11,639	221	409	416
5000-5900	145	12,838	259	442	458
6000-6900	81	13,391	305	493	458
7000 +	32	13,426	382	570	385

Table 8 - Feed Cost Per Cwt. of Milk reveals that as one would expect, those herds with the lowest feed cost per hundred weight of milk have higher production. The majority of the dairy herds, 447, had feed cost per hundred weight of milk greater than \$3.00. The 1972-73 average feed cost per hundred weight of milk in the DHI program was \$2.60 and in 1973-74 the average feed cost per hundred weight of milk is \$3.57. This is an increase in feed cost per hundred weight of milk of 97¢ or is a 37% increase over the \$2.60 value of the preceeding year.

TABLE 8. Feed Cost Per Cwt. Milk

F.C./cwt.,\$	Number of Herds	Milk Lbs.	Source of Net Energy, %				Income over Feed Cost, \$
			Conc.	Suc.F.	Dry F.	Past.	
1.50 - 1.99	2	13,463	67	27	02	04	661
2.00 - 2.49	10	13,440	51	19	17	13	621
2.50 - 2.99	69	12,706	51	16	14	19	546
3.00 - +	447	11,981	52	12	17	19	403

Table 9 Pasture vs. No Pasture shows that 38 herds had no pasture at all while 490 herds used some pasture. Those herds with no pasture at all averaged more than 600 pounds of milk over those herds which pastured. One of the reasons for the increased milk production also can probably be contributed to the fact that 56% of their net energy came from concentrates. However, their income over feed cost was \$47 per cow higher than those on the pasture system.

TABLE 9. Pasture vs. No Pasture

Forage System	Number Herds	Milk Lbs.	Source of Net Energy, %				Income Over Feed Cost,\$
			Conc.	Suc.F.	Dry F.	Past.	
No Pasture	38	12,676	56	27	16		469
Pasture	490	12,042	52	11	17	20	422

This is a summary of feed sources reported in DHI herds over the past 10 years.

TABLE 10.

	Conc. Fed	Succ. Fed	Dry F. Fed	Pasture
1964-65	4300	8000	3600	168
1965-66	4400	6100	3700	187
1966-67	4700	6600	3900	171
1967-68	4800	8000	3700	156
1968-69	4900	8200	3700	155
1969-70	4900	8300	3700	152
1970-71	5000	7100	3600	166
1971-72	5100	7100	3300	171
1972-73	5200	6700	3400	160
1973-74	5100	6800	3100	180

The above table shows that there has been an increase in the pounds of concentrates fed of 800 to 900 pounds per cow since the 1964-65 testing year. Milk production is more than 1500 pounds higher for the 1972-73 testing year than it was in 64-65. Although there has been some fluctuation in succulents fed when it is reduced to a dry matter basis, there has not been a major change. However, this year 1973-74, there appears to be a decrease in the pounds of dry forage fed. This decrease is in the magintude of about 300 pounds and is the lowest level in the last ten years.

SUMMARY OF MISSOURI OFFICIAL RECORDS FOR 1973-74

<u>Production</u>	<u>Low 25%</u>	<u>Medium 50%</u>	<u>High 25%</u>
1. Number of cows	63.8	65.8	61.2
2. Pounds of milk per cow	9,169	12,074	14,746
3. Pounds butterfat per cow	374	439	532
4. 4% F.C.M.=(milk x.4)+(fat x 15)	9,278	11,415	13,878
5. % cow days in milk	83	84	85

Feed Per Cow Per Year

6. Concentrate fed (lbs.)	4,198	5,084	5,703
7. % total ENE from Concentrates	46	50	52
8. Succulent forage fed (lbs.)	6,338	7,646	7,039
9. % total ENE from Succulent Forages	14	16	13
10. Dry Forage fed (lbs.)	2,995	3,015	3,702
11. % total ENE from Dry Forage	17	16	18
12. Pasture days	219	189	198
13. % total ENE from Pasture	23	18	17
14. Estimated total ENE fed (Therms)	6,741	7,356	8,048

Income and Expense

15. Value of product (per cow)	\$660	\$857	\$1,025
16. Total Feed cost (per cow)	\$355	\$433	\$497
17. Income over feed cost (per cow)	\$305	\$419	\$542
18. Other expenses not including labor (est. ½ of feed cost per cow)	\$153	\$210	\$271
19. Est. return to labor and management (per cow)	\$152	\$209	\$271
20. Feed cost per cwt. milk	\$3.87	\$3.59	\$3.37
21. Feed cost per cwt. .4% FCM	\$3.83	\$3.79	\$3.58

Herd Summary

22. Total 4% milk produced per farm (lbs.)	591,936	751,107	849,334
23. Total milk income	\$42,108	\$56,391	\$62,730
24. Total return to labor and manage- ment	\$9,698	\$13,752	\$16,585
25. Percent milk income return to labor and management	23	24	26
26. Number cows required per \$1,000 return to labor & management	6.6	4.8	3.7
27. Lbs. milk produced per \$1,000 return to labor and management (4% FCM)	61,235	54,792	51,349

THE 450--500--550--600 CLUBS

Dairymen are admitted to these clubs by application when their herd production has been equal to or above the specified production level for the last five years. The following is a listing of current members of each club. If a herd drops below the club level it is suspended for one year. The five year herd average and the year admitted to the club are given.

HERD OWNER	Year Admitted	5 year average	
		Milk	Fat
<u>THE 450 CLUB</u>			
Walter Brazeale	61	10,664	512
Raymond G. Sechler	64	13,704	485
Donald Hegeman	65	12,478	482
Walter Rehagen	65	13,134	482
Arthur Hartman	67	14,019	527
Proffitt Farms	67	13,317	467
Jerry Weldy	67	15,890	528
Francis French and son	68	13,135	509
Dave W. Norman	68	14,314	496
George Quinn	68	13,813	487
Doyle Wertemberger	69	13,831	525
Shawnee Farms	69	9,967	477
E.C. Grooms	69	13,079	493
G. G. Vanderfeltz	69	13,750	513
Kenneth L. Gates	69	10,480	519
Glen Breshears	70	13,010	482
Chalmer Voelker	70	11,853	489
Harvey Nischwitz	70	13,438	498
Ray Gene Sims	70	13,284	479
Clark & Fred Johnson	70	14,076	510
Buckman Bros.	70	13,152	477
Lester Witthaus	70	13,731	506
Victor Voss	70	14,233	508
Carl Bros.	70	11,731	529
Ronnie Edmondson	71	14,210	488
Nolan Meier	71	13,781	508
Larry Purdom	71	14,222	490
Vincent F. Hoelscher	71	14,145	511
Robert J. Cassmeyer	71	13,593	513
Raphael Frank	71	13,308	473
Boyd Bros.	71	14,964	556
Harlan E. Cochran	71	9,982	511
Joe Groom	71	13,596	485
Wilbert Hackmann	71	12,809	460
Willard Luecker	72	14,505	503
Wayne A. Freitag	72	13,364	472
John & Robert Bunge	72	14,398	532
Elton Koch	72	13,492	496
Clem Lesmeister	72	11,015	476
Swickhamer Brothers	72	14,474	500
Jerry Stine	72	13,931	494
Robert & Carl Frankenbach	72	9,907	492
Daisy Dairyland	72	10,230	469
Frank Sutterer	73	13,245	498
Mervin E. Aurand	73	13,890	509
Harold Fenske	73	12,875	472
Herbert Kramer	73	15,070	499
Palmer Fritsche	73	13,026	471
State Hospital #1	73	13,738	494
Champ Goodwood Farms	73	13,843	498
University of Mo. Holstein Farm	73	14,051	545
Ernest Edgerton	74	10,119	526
Bierbaum Bros.	74	10,110	487
<u>THE 500 CLUB</u>			
John D. and John H. Erp	61	11,973	551
C.A. Gilman	64	14,198	543
Ronald Shaver	69	14,370	536
Carl E. Kastendieck	70	12,450	594
Charles R. Little	70	15,819	563

The 500 Club (cont.)

Robert & Eileen Longan	71	14,216	523
Karl B. Althage	71	14,207	511
Leonard Goodman	71	14,495	518
Henry Dreinhoefer	71	15,199	539
High Ridge Dairy Inc.	71	15,170	540
Francis Kessler	71	14,816	557
Grimm Dairy Farm	71	14,884	558
C.C. Tevis	71	14,254	522
Board Bros.	72	14,517	524
Claude Blades and sons	72	14,922	563
Kluesner Bros., Inc.	72	10,251	556
John & Robert Bunge	73	14,619	542
Gilbert Wesselschmidt	73	14,081	531
Wilfred Dryer	73	15,290	559
Robert and Eileen Longan	73	15,153	564
Sylvester Bohnert	73	15,046	559
Scott Carrender	74	15,424	557
Lester Witthaus	74	14,437	530
	<u>THE 550 CLUB</u>		
Lloyd C. Bacon	66	16,800	625
Albert Bos	67	16,079	586
Jack Herman	68	16,904	606
O.F. and Gene Staiger	70	17,038	616
Walter Staiger	70	19,505	720
S.U. Prichard Farm	71	14,989	591
University of Mo. Holstein Farm	74	14,962	579
	<u>THE 600 CLUB</u>		
Robert Thomson, Jr.	72	17,823	647
Albert Staiger	73	16,912	658
John and William Fick	74	17,418	639

CLASS LEADERS FOR MILK

The top two cows of each age group of each breed completing lactation records between May 1, 1973, and April 30, 1974 are listed below as class leaders for milk. All records are for lactations of 305 days or less.

CLASS LEADERS							
Class	Cow's Index	Registration	Milk	Fat		Date	
Herd No. and Owner	No. and Name	or Eartag No.	Lbs.	%	lbs.	Fresh	
AYRSHIRE							
<u>Mature Cows</u>							
48-0078	W.C. Hoffman	63	43VKS7205	14,630	3.5	517	5-23-73
BROWN SWISS							
<u>Senior Yearlings</u>							
70-0009	Chalmer Voelker	129 Spice	43AMT0004	12,150	3.9	474	1-12-73
33-0042	Carl Bros	269 Carla	567034	10,620	4.1	438	10-28-72
<u>Junior Two Year Old</u>							
06-0063	Kenneth Wheatley	109	43WAL8837	13,350	3.2	430	10-23-72
75-0155	Frank Artz	68 Joan	43VML4109	13,070	4.3	568	7-23-72
<u>Senior Two Year Old</u>							
75-0155	Frank Artz	82 Betty	43VLK4490	15,140	3.9	591	8-09-72
64-9027	T.B. Hitchcock	33 Lassie	550712	15,120	3.7	556	9-12-72
<u>Junior Three Year Old</u>							
33-0042	Carl Bros	242 Phoebe	557920	15,490	4.0	623	3-21-73
33-0042	Carl Broa	235 Sharon	552435	15,400	3.9	603	12-12-72
<u>Senior Three Year Old</u>							
20-0008	Harlan Hunziker	13 Ruthy	536477	18,420	4.1	763	11-16-72
33-0042	Carl Bros	246 Jolly	552445	15,800	4.1	650	4-27-73
<u>Junior Four Year Old</u>							
33-0042	Carl Bros	213 Minky	534979	18,060	4.0	717	3-06-73
20-0008	Harlan Hunziker	9 Gwen	538050	16,770	3.8	631	1-05-73
<u>Mature Cow</u>							
06-0063	Kenneth Wheatley	49	43WAK8512	20,650	3.1	647	11-20-72
64-9027	T.B. Hitchcock	24 Pam	487092	20,350	3.6	730	11-27-72
GUERNSEY							
<u>Senior Yearlings</u>							
19-0114	Edwin Ray	5	43VIV9560	13,200	4.5	589	8-20-72
06-0041	Clem Lesmeister	217 Judy	2564623	11,360	4.3	493	12-19-72
<u>Junior Two Year Old</u>							
19-0114	Edwin Ray	47	43VMM8499	14,790	4.3	643	3-17-73
58-0049	Carl Frankenbach	87	2564563	14,460	4.6	663	10-18-72
<u>Senior Two Year Old</u>							
77-0013	N.E. Williams	83	2534854	16,170	4.5	727	1-20-73
83-9011	Sunnymede Farm	330 Grande	2551006	14,040	4.6	652	2-22-73
<u>Junior Three Year Old</u>							
19-9050	Carl Kastendieck	85 Ethyl	2510055	18,240	4.8	881	2-24-73
06-0041	Clem Lesmeister	1151 Slim	48WHM8448	16,010	3.3	534	4-30-72
<u>Senior Three Year Old</u>							
19-9050	Carl Kastendieck	88 Satin	2511316	16,680	4.6	759	12-18-72
77-0013	N. E. Williams	65	2534859	16,000	5.1	809	2-10-73
<u>Junior Four Year Old</u>							
58-0046	Marvin Frankenbach	107 Doris	2513169	15,440	4.5	698	2-07-73
77-0013	N.E. Williams	15 Parcel	2486276	15,170	4.2	636	12-10-72

Class Herd No. and Owner	Cow's Index No. and Name	Registration or Eartag No.	Milk Lbs.	Fat		Date Fresh
				%	lbs.	
<u>Senior Four Year Old</u>						
19-0069 Frank Estes	271 Elley	2469260	19,100	4.5	859	1-17-73
19-9050 Carl Kastendieck	75 Prisla	2451843	15,280	4.6	705	10-14-72
<u>Mature Cow</u>						
14-0021 Daisy Dairyland	124 Lucky	43VKG6612	17,660	4.5	797	12-05-72
58-0049 Carl Frankenbach	69	2373847	17,500	4.7	820	2-15-73
HOLSTEIN						
<u>Senior Yearlings</u>						
22-9001 Lloyd Bacon	240 Doaw	7707799	17,720	3.5	617	8-03-72
19-0096 Joe Nelson	105	8167017	17,250	3.3	577	2-22-73
<u>Junior Two Year Old</u>						
35-9069 Robert Thomson	136 Elsie	7684182	20,670	4.2	858	1-22-73
46-0006 Norman Briscoe	79	43WAI6657	20,290	3.8	761	1-14-73
<u>Senior Two Year Old</u>						
97-0031 Jack Herman	129	43VMA1012	23,070	3.5	808	10-30-72
19-0094 Wesley Roller	576 Bethe	43VMK7859	19,730	3.2	639	9-21-72
<u>Junior Three Year Old</u>						
92-9002 School of the Ozarks	161	7497667	22,420	2.8	635	1-20-73
22-9001 Lloyd Bacon	249	43VJG4747	21,770	3.6	792	10-15-72
<u>Senior Three Year Old</u>						
71-0030 Paul Davis	97	43WAK3569	19,800	3.4	669	3-06-73
19-9018 Joe King	174 Chief	7389997	19,660	4.1	808	11-15-72
<u>Junior Four Year Old</u>						
22-9001 Lloyd Bacon	181 Pilot F	7282133	24,740	3.6	881	1-08-73
29-9025 Duane Blodgett	30 Spot	7176077	23,510	3.5	826	4-29-73
<u>Senior Four Year Old</u>						
35-9069 Robert Thomson	98 Robin	7067893	25,150	4.1	1041	12-27-72
33-9027 Wilfred Dryer	116 Robin	7040887	24,120	3.2	770	11-10-72
<u>Mature Cows</u>						
22-9001 Lloyd Bacon	2 Kay	6070394	31,980	3.8	1225	9-09-72
36-0038 J.W. Kilburn	52	43WAF0865	27,030	3.0	815	10-29-72
<u>Grandma Cow</u>						
48-0054 Green Valley Dairy	16	43WAI4488	20,080	3.1	623	3-19-73
JERSEY						
<u>Senior Yearling</u>						
40-9003 Warren Crider	256	43WAI7562	11,990	4.1	487	11-26-72
97-9038 Daypeck Jersey Farm	511	2845120	11,060	5.3	582	7-30-72
<u>Junior Two Year Old</u>						
81-0010 Kluesner Bros Inc.	369 Selene	43WAK8420	11,770	5.4	630	1-29-73
40-9003 Warren Crider	255	43WAI7561	11,610	3.7	433	1-20-73
<u>Senior Two Year Old</u>						
81-0010 Kluesner Bros Inc.	360	43WAK8411	12,290	5.2	644	3-17-73
81-0010 Kluesner Bros Inc.	363	43WAK8415	12,180	5.3	641	4-25-73
<u>Junior Three Year Old</u>						
46-9029 Harlan Cochran	183 Clover	2803189	14,070	5.5	777	2-26-73
27-0076 Wm. C. Nimmo	61 Dustia	43VMB3006	13,620	3.6	486	8-07-72
<u>Senior Three Year Old</u>						
98-0013 Ernest Edgerton	123 Dakota	43WAJ2295	13,370	5.0	666	2-04-73
19-0094 Wesley Roller	596 Sept	2803861	11,990	5.5	664	3-02-73



Class		Cow's Index	Registration	Milk	Fat		Date
Herd No. and Owner		No. and Name	or Eartag No.	Lbs.	%	lbs.	Fresh
<u>Junior Four Year Old</u>							
98-0013	Ernest Edgerton	103 Alabma	43XAU1299	15,680	5.1	803	12-15-72
98-0013	Ernest Edgerton	114 Texas	43WAJ9563	13,910	5.2	724	9-15-72
<u>Senior Four Year Old</u>							
46-9029	Harlan Cochran	164 Vickey	2772177	14,770	4.6	676	3-13-73
97-9038	Daypeck Jersey Farm	479	2769124	13,060	5.0	654	3-03-73
<u>Mature Cows</u>							
42-0028	Hall Farms	20	43WAF3924	16,180	3.7	596	11-05-72
97-0049	Joe & Dan Clemens	85 Bell	43WAH6452	14,600	4.9	721	1-10-73
<u>Grandma Cow</u>							
19-9090	Lor-Ed Farm	14	2274595	11,420	4.8	548	1-22-73
MILKING SHORTHORN							
<u>Junior Two Year Old</u>							
49-0035	Orville Williams	5	43WAM5172	13,720	3.7	508	2-25-73
49-0035	Orville Williams	13	43WAL9679	13,450	3.9	524	12-20-72
<u>Senior Two Year Old</u>							
49-0035	Orville Williams	43	350843	13,030	3.5	459	11-03-72
49-0035	Orville Williams	23	360001999	12,710	3.3	418	9-28-72
<u>Junior Three Year Old</u>							
97-0070	Alfred Buckner	233 Doll	346428	11,100	3.6	396	3-28-73
<u>Junior Four Year Old</u>							
49-0035	Orville Williams	35	339365	11,770	4.0	470	8-27-72
49-0035	Orville Williams	32	341055	9,550	3.9	373	12-08-72
<u>Mature Cow</u>							
35-9036	Kindrick Bros	115 RnLady	328117	14,970	4.0	600	1-16-73
49-0035	Orville Williams	33	288301	14,050	4.0	560	7-31-72

CLASS LEADERS FOR FAT

The top two cows of each age group of each breed completing lactation records between May 1, 1973, and April 30, 1974 are listed below as class leaders. The all time class leader is also listed when the lactation record for an age class is held by a cow having completed her record during a prior year. All records are for lactations of 305 days or less.

Age	BREED			
	Milking Shorthorn	Jersey	Guernsey-Brown Swiss & Ayrshire	Holstein
Under 24 months	400	450	500	550
24-35 months	400	500	550	600
36-47 months	400	550	575	650
48-59 months	400	575	600	700
60-167 months	450	600	700	800
168 and over	400	500	550	600

CLASS LEADERS

Class	Cow's Index	Registration	Milk	Fat		Date	
Herd No. and Owner	No. and Name	or Eartag No.	lbs.	%	lbs.	Fresh	
<u>AYRSHIRE</u>							
<u>Junior Two Year Old</u>							
22-0038	Ralph Cooper	1015 Ada	43WAK3284	14,360	4.1	586	9-23-71
<u>BROWN SWISS</u>							
<u>Senior Yearling</u>							
06-0043	Donald Martin	144 Lila	558596	14,610	4.1	600	5-18-72
<u>Junior Two Year Old</u>							
45-9021	Lloyd H. Huckie	3 Loreli	476267	15,150	4.1	617	3-24-67
75-0155	Frank Artz	68 Joan	43VML4109	13,070	4.3	568	7-23-72
<u>Senior Two Year Old</u>							
20-0008	Harlan Hunziker	3	43WAI1090	16,000	4.3	680	10-10-69
75-0155	Frank Artz	82 Betty	43VLK4490	15,140	3.9	591	8-09-72
64-9027	T.B. Hitchcock	33 Lassie	550712	15,120	3.7	556	9-12-72
<u>Junior Three Year Old</u>							
20-0008	Harlan Hunziker	38 Marell	507696	18,460	4.3	800	4-18-70
64-9027	T.B. Hitchcock	29 Laury	548951	14,910	4.2	628	1-23-73
33-0042	Carl Bros	242 Phoebe	557920	15,490	4.0	623	3-21-73
<u>Senior Three Year Old</u>							
20-0008	Harlan Hunziker	13 Ruthy	536477	18,420	4.1	763	11-16-72
33-0042	Carl Bros	246 Jolly	552445	15,800	4.1	650	2-27-73
<u>Junior Four Year Old</u>							
20-0008	Harlan Hunziker	104 Chiefk	499294	23,330	4.0	943	2-24-70
33-0042	Carl Bros	213 Minky	534979	18,060	4.0	717	3-06-73
64-9027	T.B. Hitchcock	28 Neta	546242	14,630	4.5	655	6-10-73
<u>Senior Four Year Old</u>							
20-0008	Harlan Hunziker	46 Bonnel	507699	24,730	4.0	992	4-28-71
<u>Mature Cows</u>							
20-0008	Harlan Hunziker	28 Charty	482102	22,730	4.1	932	2-06-71
64-9027	T.B. Hitchcock	13 Jean	43WAG3437	19,010	4.1	780	2-26-73
64-9027	T.B. Hitchcock	17 Joan	485709	20,240	3.8	769	1-20-73
<u>GUERNSEY</u>							
<u>Senior Yearling</u>							
19-0069	Frank Estes	54 Marie	2342440	15,760	4.8	757	3-14-66
19-0114	Edwin Ray	5 5	43VIV9560	13,200	4.5	589	8-20-72
19-9050	Carl Kastendieck	110 Sudie	2585392	11,160	4.7	519	4-23-73
<u>Junior Two Year Old</u>							
19-9050	Carl Kastendieck	50 Sadie	2370429	17,760	4.4	790	3-31-68
58-0049	Carl Frankenbach	87 84	2564563	14,460	4.6	663	10-18-72
19-0114	Edwin Ray	47 47	43VMM8499	14,790	4.3	643	3-17-73

Class	Cow's Index	Registration	Milk	Fat		Date	
Herd No. and Owner	No. and Name	or Eartag No.	lbs.	%	lbs.	Fresh	
<u>GUERNSEY, Continued</u>							
<u>Senior Two Year Old</u>							
50-0002	William K. Davis	95	2356137	15,470	5.1	786	4-08-68
77-0013	N.E. Williams	83 83	2534854	16,170	4.5	727	1-20-73
58-0049	Carl Frankenbach	62 62	2551106	12,490	5.4	677	5-24-73
<u>Junior Three Year Old</u>							
19-9050	Carl Kastendieck	85 Ethyl	2510055	18,240	4.8	881	2-24-73
58-0046	Marvin Frankenbach	19 Myra	2530335	15,880	5.5	866	11-26-72
<u>Senior Three Year Old</u>							
19-0069	Frank Estes	13 L Moose	43WAD3591	18,110	4.7	859	2-27-69
77-0013	N. E. Williams	65 65	2534859	16,000	5.1	809	2-10-73
19-9050	Carl Kastendieck	88 Satin	2511316	16,680	4.6	759	12-18-72
<u>Junior Four Year Old</u>							
19-9050	Carl Kastendieck	36 Sandy	2217048	21,350	4.3	919	1-26-67
09-9004	Foremost Guernsey Farm	167	2459287	14,160	5.5	784	11-23-72
81-0036	Bierbaum Bros	12 12A	2450212	13,360	5.3	703	6-07-72
09-9004	Foremost Guernsey Farm	78	2464113	12,480	5.6	703	7-05-72
<u>Senior Four Year Old</u>							
19-0069	Frank Estes	271 Elley	2469260	19,100	4.5	859	1-17-73
33-0031	Marvin Sprick	132 Dolly	43WAI3712	14,850	5.1	760	4-05-73
<u>Mature Cows</u>							
19-9050	Carl Kastendieck	36 Sandy	2217048	22,820	4.3	982	4-15-68
33-0031	Marvin Sprick	90 Tessie	2360698	17,250	5.1	882	1-21-73
58-0049	Carl Frankenbach	48 48	2400477	16,900	5.0	852	10-03-72
<u>HOLSTEIN</u>							
<u>Senior Yearling</u>							
22-9001	Lloyd Bacon	181 Pilot F	7282133	18,650	3.9	724	10-22-70
40-9003	Warren Crider	257	43WAI7575	16,320	3.9	630	3-06-73
22-9001	Lloyd Bacon	240	7707799	17,720	3.5	617	8-03-72
<u>Junior Two Year Old</u>							
35-9069	Robert Thomson	136 Elsie	7684182	20,670	4.2	858	1-22-73
46-0006	Norman Briscoe	79	43WAI6657	20,290	3.8	761	1-14-73
<u>Senior Two Year Old</u>							
19-0064	Charles Little	103 Snoflk	43WAD3129	26,610	3.7	973	4-26-66
97-0031	Jack Herman	129	43VMA1012	23,070	3.5	808	10-30-72
24-9027	Richard Lenz	255	7745327	18,860	4.1	771	2-01-73
<u>Junior Three Year Old</u>							
97-9061	Arthur Lorenz	1 Mark	5365163	24,800	3.9	961	9-06-64
19-0094	Wesley Roller	574	7425923	20,260	4.5	905	9-20-72
19-9035	Albert Staiger	106 Blaze	7452243	20,750	3.9	819	1-14-73
<u>Senior Three Year Old</u>							
46-0009	Tevis Farms, Inc.	73	43WAJ3357	21,410	4.6	990	11-25-72
70-0016	Sylverster Bohnert	83 Reta	43WAK0493	17,970	4.5	816	11-12-72
<u>Junior Four Year Old</u>							
35-9069	Robert Thomson	82 Janet	6942890	24,940	4.0	1009	9-25-71
07-0017	Clyde Rehmer	48	43VKT7833	21,180	4.2	881	9-20-72
70-0018	Palmer Fritsche	106 Jule	7215068	18,920	4.4	831	1-21-73
<u>Senior Four Year Old</u>							
12-9006	Sky-Go Farms, Inc.	575	5624561	26,160	4.6	1200	3-08-67
35-9069	Robert Thomson	98 Robin	7067893	25,150	4.1	1041	12-27-72
19-9035	Albert Staiger	85 Lois	7011517	22,800	4.1	929	10-06-72
<u>Mature Cows</u>							
22-9001	Lloyd Bacon	2 Kay	6070394	31,980	3.8	1225	9-09-72
35-9069	Robert Thomson	70 Susie	6477796	20,190	5.4	1093	4-07-73
<u>Grandma Cow</u>							
75-0154	Larry Laney	10 10	43WAC4365	16,550	3.9	651	0-0-66
48-0054	Green Valley Dairy	16	43WAI4488	20,080	3.1	623	3-19-73

Class	Cow's Index	Registration	Milk	Fat		Date	
Herd No. and Owner	No. and Name	or Eartag No.	lbs.	%	lbs.	Fresh	
<u>JERSEY</u>							
<u>Senior Yearling</u>							
19-9075	Estes Homestead Farm	29	43VCY4051	13,090	5.0	655	3-03-66
97-9038	Daypeck Jersey Farm	511	2845120	11,060	5.3	582	7-30-72
16-0009	Ross Helms	215 Marcia	2840780	9,850	5.0	491	7-13-72
<u>Junior Two Year Old</u>							
19-9075	Estes Homestead Farm	100 Goat	2670403	12,940	5.5	714	7-14-68
81-0010	Kluesner Bros, Inc.	369 Selene	43WAK8420	11,770	5.4	630	1-29-73
81-0010	Kluesner Bros, Inc.	370 Sally	43WAK8421	11,560	5.0	582	1-24-73
<u>Senior Two Year Old</u>							
46-9029	Harlan Cochran	84 Prince	2581664	13,750	5.3	723	1-14-67
81-0010	Kluesner Bros., Inc.	360 Ivy	43WAK8411	12,290	5.2	644	3-17-73
81-0010	Kluesner Bros., Inc.	363 Isabel	43WAK8415	12,180	5.3	641	4-25-73
<u>Junior Three Year Old</u>							
46-9029	Harlan Cochran	183 Clover	2803189	14,070	5.5	777	2-26-73
98-0013	Ernest Edgerton	110 Mimphs	43WAJ2296	12,630	5.2	651	2-23-73
<u>Senior Three Year Old</u>							
04-9046	Masters Jersey Farm	102 Heidi	2499341	16,870	5.1	868	7-25-66
98-0013	Ernest Edgerton	123 Dakota	43WAJ2295	13,370	5.0	666	2-04-73
19-0094	Wesley Roller	596 Sept	2803861	11,990	5.5	664	3-02-73
<u>Junior Four Year Old</u>							
04-9046	Masters Jersey Farm	148	2637762	19,330	4.3	836	12-26-68
98-0013	Ernest Edgerton	103 Alabma	43XAU1299	15,680	5.1	803	12-15-72
31-9031	Martin Verburgt	59 Belflo	2799004	13,540	5.8	792	5-17-73
<u>Senior Four Year Old</u>							
04-9046	Masters Jersey Farm	102 Heidi	2499341	17,010	5.3	902	8-19-67
98-0013	Ernest Edgerton	96 Rose	43XAU1295	12,060	5.6	679	12-31-72
46-9029	Harlan Cochran	164 Vickey	2772177	14,770	4.6	676	3-13-73
<u>Mature Cows</u>							
04-9041	Burney & Latimer	43 Goldy	2217890	16,110	6.5	1041	5-01-66
81-0010	Kluesner Bros, Inc.	204 Kaniah	43WAF1970	12,900	5.6	728	9-07-72
97-0049	Joe and Dan Clemens	85 Bell	43WAH6452	14,600	4.9	721	1-10-73
<u>Grandma Cow</u>							
19-9090	Lor-Ed Farm	14	2274595	11,420	4.8	548	1-22-73
<u>MILKING SHORTHORN</u>							
<u>Junior Two Year Old</u>							
49-0035	Orville Williams	13 13	43WAL9679	13,450	3.9	524	12-20-72
49-0035	Orville Williams	5 5	43WAM5172	13,720	3.7	508	2-25-73
<u>Senior Two Year Old</u>							
49-0035	Orville Williams	43 43	350843	13,030	3.5	459	11-03-72
49-0035	Orville Williams	8 8	347077	11,290	3.9	439	10-01-72
<u>Junior Three Year Old</u>							
35-9010	Lilydale Farm	155 Lucy K7	332554	15,440	3.6	552	6-15-70
<u>Senior Three Year Old</u>							
49-9035	Orville Williams	8 8	293811	12,430	4.4	549	6-27-65
<u>Junior Four Year Old</u>							
24-0027	Richard Lenz	124 Roan	43WAD4048	14,740	4.0	584	12-04-64
49-0035	Orville Williams	35 35	339365	11,770	4.0	470	8-27-72
<u>Senior Four Year Old</u>							
49-0035	Orville Williams	50 50	331458	15,450	3.8	594	8-14-71
<u>Mature Cows</u>							
49-9035	Orville Williams	33	288301	17,670	4.2	747	11-14-67
35-9036	Kindrick Bros.	115 RNLady	328117	14,970	4.0	600	1-16-73
49-0035	Orville Williams	17 17	334886	12,910	4.5	578	8-15-72

## HIGH HERDS

The ten highest herd averages for each breed are listed below. These averages are for the period of May 1, 1973 to April 30, 1974.

HIGH HERDS		Cow Years	Average lbs.	
Herd Code No.	Owner		Milk	Fat
<u>BROWN SWISS</u>				
64-9027	T.B. Hitchcock	22.9	14,860	621
33-0042	Carl Bros.	74.8	13,628	540
70-0009	Chalmer Voelker	42.8	11,415	467
20-0008	Harlan Hunziker	116.1	11,067	431
82-0008	Raymond Haverland	36.1	11,069	420
23-0037	Tom E. Lepage	34.6	10,472	416
70-0004	Joseph A. Moll	39.1	10,028	397
24-0032	Richard Lenz	12.3	8,999	363
55-0020	Barry Ford	34.9	9,012	342
38-0018	C and R Neuenschwander	69.4	9,237	334
<u>GUERNSEY</u>				
77-0013	N.E. Williams	71.0	13,288	628
58-0049	Carl-Robert Frankenbach	87.4	11,906	593
19-9050	Carl Kastendieck	37.7	12,365	576
58-0046	Marvin Frankenbach	74.5	10,756	546
19-0070	C.W. Barnhart	52.9	11,727	540
14-0009	Clem Schabbing	71.2	11,727	538
19-0003	Walter Brazeale	32.0	11,742	527
81-0036	Bierbaum Bros	58.7	10,691	528
33-0001	Francis Aholt	46.3	11,303	521
97-0069	L.R. and Wayne Whitehead	95.2	11,702	515
<u>HOLSTEIN</u>				
19-9074	O.F. and Gene Staiger	36.6	18,762	699
19-0048	Walter Staiger	18.0	18,077	675
35-9069	Robert Thomson Jr.	68.9	18,107	656
46-0009	Tevis Farms Inc.	48.4	17,416	651
19-9035	Albert Staiger	45.0	16,799	649
68-0002	John & William Fick	55.3	17,611	648
31-0028	James D. Watterson	52.5	16,655	640
46-0006	Norman Briscoe	54.8	15,725	623
19-0054	Albo Farm - Albert Bos	32.1	17,074	622
19-0014	Edwin Ray	26.7	16,770	622
<u>JERSEY</u>				
81-0010	Kluesner Bros. Inc.	65.6	10,049	544
98-0013	Ernest Edgerton	41.0	11,702	543
05-0004	Delmer Kentner	71.8	9,319	505
19-9090	Lor-Ed Farm	65.1	10,014	499
44-0077	J.B. Kunkel	44.4	9,187	492
35-9121	J. Berglund	9.5	9,714	491
46-9029	Harlan Cochran	66.7	9,384	485
19-0075	Estes Homestead Farm	20.8	9,726	479
31-9031	Martin Verburgt	33.0	9,268	465
97-0260	Virgil Young	23.4	9,427	462
<u>MILKING SHORTHORN</u>				
49-0035	Orville Williams and son	37.3	11,191	400
35-9036	Kindrick Bros	68.3	8,509	331
19-9028	Glen Rauch	27.8	8,109	309
<u>MIXED</u>				
14-0021	Daisy Dairyland	91.7	12,508	533
27-0076	Wm. C. Nimmo	41.1	13,523	496
44-0088	Theodore & Gaylen Rush	76.5	11,605	485
75-0130	W. G. Fieth	54.3	12,464	441
14-0050	Leonard Adams	50.1	10,774	440
97-0049	Joe and Dan Clemens	91.3	10,633	439
06-0043	Donald R. Martin	52.3	11,052	430
98-0052	Donald Ballard	59.7	9,526	417
06-0064	Otto Fleischer	58.7	11,223	416
93-0041	Bruce Wolfe	26.7	8,721	415

## PRODUCTION EFFICIENCY WINNER

A dairyman can win the Efficient Dairy Production Contest only one time and it is certainly a honor to receive this award. One of the winners of the Dairy Production Contest was Mr. & Mrs. O.F. and Mr. & Mrs. Gene Staiger's dairy operation. This is a father-son partnership, milking about 40 cows. The rolling herd average for the Staiger farm was 18,315 pounds of milk and 676 pounds of fat as of April, 1973.

The Staiger farm is located near Billings, Missouri in Christian County and the Staigers own 148 acres. They raise 30 acres of small grain per year, 52 acres of hay, 40 acres of permanent pasture. They do an excellent job in managing their dairy herd and in 1973, 23% of their herd was culled due to production or other reasons and in 1972 their selection differential for estimated producing ability was +365 pounds of milk and +10 pounds of fat.

The Staigers are doing an excellent job with their dairy herd reproductive program as they are maintaining a calving interval of 374 days which is 18 days per cow less than the state average of 392 days. The Staigers are quite careful in their selection of sires and sire average for milk and fat is +265 pounds and +13 pounds respectively. The Staigers use artificial insemination exclusively.

Last year the Staigers added 14 heifers to the herd, all of which were raised on the farm. They had 104 feeding index and their feed cost per hundred weight of milk in 1972-73 was \$2.57 with an income over feed of \$601 per cow. This herd is a remarkable herd, since during the past five years they have averaged 632 pounds of butter-fat. These averages included not only milking cows but also dry cows. This award was presented to the Staigers by the Association of Missouri Dairy Organizations - Dairy Awards Fund and presented at the 1974 Annual Meeting of the Mo. DHI Federation.

Pictured below is Dean Schell Bodenhamer, Dean of the Food and Fiber programs, presenting the recognition plaque to Mr. & Mrs. Gene Staiger and extending his regards to Mr. & Mrs. O.F. Staiger, as they were unable to be present. The award was presented at the 1974 Mo. DHI Federation meeting and was made possible by the Association of Missouri Dairy Organizations Dairy Awards Fund program.



## PRODUCTION EFFICIENCY WINNER

Mr. & Mrs. Charles C. Tevis were also recipients of the Efficient Production Award. Mr. & Mrs. Tevis's dairy farm is located near Holden, Missouri in Johnson County.

Last year the Tevis's milked an average of some 53 cows and had a rolling herd average of 17,306 pounds of milk and 622 pounds of fat. This is an increase for the Tevis farm of some 1300 pounds of milk per cow over the previous year and demonstrates the progress that this herd has made.

In 1973 the Tevis herd had a +358 selection differential for estimated producing ability on milk and +11 EPA on fat.

Another indication of the good management job that has been carried out is the fact that the calving interval is 383 days as compared to a state average of 392 days. The sire average for milk production in the Tevis herd is +268 pounds of milk and +3 on fat. The Tevis farm added 10 heifers to the herd last year, all of which were raised on the farm and 100% of their breeding is artificial insemination.

The Tevis farm in the testing year of 1972-73 had a feed cost per hundred weight of milk of \$2.12 with an income over feed cost of \$619. They operate a 400 acre dairy farm and have a 137 acres of row crops, 62 acres of hay and 110 acres of permanent pasture. The Tevis farm is exclusively dairy with no other animals on the farm.

Congratulations to the Charlie Tevis family.

Pictured below is a picture of Dean Schell Bodenhamer, Dean of the Food and Fiber programs, presenting the Efficient Dairy Production plaque at the 1974 Mo. DHI Federation Annual meeting to Charles and Helen Tevis. The award is provided through the Association of Missouri Dairy Organizations Dairy Awards Fund Program.





## SUPERVISOR'S EFFICIENCY AWARDS

Supervisor Efficiency awards were presented to various supervisors and these awards are based on how well the supervisor performs his job.

The top two supervisors were presented a plaque and a check for \$60 and these awards went to Mr. Donald Slack, DHIA Supervisor in Franklin County DHI Association, and to Mr. Marshall Penn, DHI Supervisor for Missouri Valley DHI Association. There was a tie for the third place award so a check for \$55 was presented to Mr. Arnold Schmidt of the Perry County DHI Association who has since retired, and to Mr. Bob Weese of the Bates County DHI Association who has since retired.

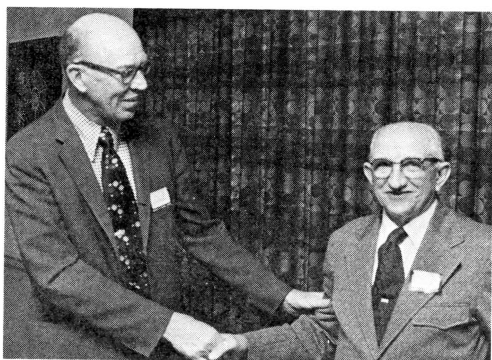
The fourth place award and a check for \$45 went to Mr. Paul Hook of the Greene County DHI Association and fifth place and check for \$35 went to Mr. Jerry Eaves of the Tri-County DHI Association. Sixth place went to Miss Jeanne Malcolm who is DHI Supervisor for the Texas County Association. Seventh place and a check for \$20 went to Mr. Alvin Stuenkel, DHI Supervisor for the Lafayette County DHI Association.



Professor Fred Meinershagen of the Univ. of Mo. presents Donald Slack a plaque and a check for \$60 for being one of the two outstanding supervisors in the state.



Professor Fred Meinershagen of the Univ. of Mo. presents Marshall Penn a plaque and a check for \$60 for being one of the two outstanding supervisors in the state.



Mr. Fred Meinershagen presents the check to Mr. Alvin Stuenkel, a supervisor efficiency award winner and supervisor of the Lafayette County DHI Association



Mr. Frank Murrill, Extension Dairyman from California on leave of absence with ARS as National DHI Coordinator, was the featured speaker of the 1974 Annual DHI Fed. meeting.





Allen Garverick presents Mr. Joe King of Clever, Mo., a Class Leader Certificate for his four year old Holstein cow at the 1974 Mo. DHI Fed. Annual meeting.



Allen Garverick presents Mr. Robert Kendrick a Class Leader Certificate for a class leading three year old Milking Shorthorn cow at the 1974 Mo. DHI Federation Annual meeting.



Mr. Carl Schneider, secretary-treasurer of the Mo. DHI Federation, presents Mr. Noel Boyd, retiring president and past director for six years of the Mo. DHI Fed. a plaque in recognition for the time and service Mr. Boyd contributed to the Mo. DHI program.



The 1974 Mo. DHI Annual Fed. meeting awards luncheon gave an opportunity for dairymen, Extension Dairymen, Deans and DHI Supervisors to discuss opportunities in the DHI program and the dairy industry.



Past president Noel Boyd and Frank Murrill discuss some of the business activities of the National DHI program and also the Mo. DHI Federation.



Allen Garverick presents class leader certificate to Mr. Harlan Hunziker, Kahoka, Mo., for class leaders senior four year old, mature cow and junior three year old.

SUPERVISOR LENGTH OF SERVICE

The Association of Missouri Dairy Organizations recognizes the importance of the DHI Supervisor by purchasing length of service awards. An award was presented to Marvin Adam for five years of service. In addition, they assisted with the annual DHI Federation meeting by purchasing the meal for all supervisors.

Supervisor	Years of Service*	Association
Miss Jeanne Malcolm	28	Texas
Dale Tope	23	St. Charles
Don Slack	19	Franklin
C.A. Hunter	16	Christian
Mr. & Mrs. Chancy Housworth	12	Pettis
E. L. McCauley	12	Cass
Alvin Stuenkel	12	Lafayette
Gail Shipley	11	Grand River
Marshall Penn	11	Missouri Valley
Carl Todt	9	Southeast
Dean Fleharty	8	Lafayette
Mr. & Mrs. Ted Hallam	7	Tri-County
Mrs. Earl Nelsen	7	Webster
Jim Wilkerson	7	Lawrence
Paul Shouse	6	Salt River
Marvin Adam	5	Phelps
Dean Bunch	4	Northeast
Paul Hook	4	S.W.T.C.
Edwin M. Frink	3	S.W.T.C.
Jerry Eaves	2	Tri-County
Rex Decker	2	Morgan
Clark Hendrickson	2	Polk
Althea Elfrink	2	St. Francois
Byrl Goforth	1	Andrew-Buch.Nod.
Tom Hutchens	1	Barry
Arthur Tedlock	1	Dallas
Denny Noto	1	Green Hills
D.H. Blanton	1	Harrison
Don White	1	Howell
Melvin Brandt	1	Osage
Gary DeMoss	1	Polk
Orual E. McConnell	1	Wright
Dottie C. Rowland	1	Wright
Rick Tranticanti	1	S.W.T.C.

Less Than One Year Service

Buck Sanders	Tri-County
Phillip Jones	Four County
John Veit	Cole
Adele Cooper	Douglas
Clifford Claar	Douglas
Mark Croucher	Green Hills
Dave Halmick	Green Hills
Tony Colombe	Jasper-Barton
Loren Campbell	Johnson
Ernie Barker	Laclede
Chris Powell	Newton-McDonald
Gary Dobbelare	Perry
Rodney Leathers	St. Francois
Jim Dale	S.W.T.C.
Jeannie Gatton	S.W.T.C.
Don Huff	S.W.T.C.
Paul Arnold	S.W.T.C.
Wesley Winslow	S.W.T.C.

HERD RECORDS BY COUNTY

This section consists of a listing of official herds in each county whose production equals or is above the average for the state of Missouri (12,107 milk; or 451 fat). Herds are indicated by herd code and owner's name. Breeds are designated as follows:

1	Ayrshire	4	Jersey	7	Red Dane
2	Guernsey	5	Brown Swiss	8	Other, Mixed or Undesignated
3	Holstein	6	Milking Shorthorn	9	Red Poll

County and Herd Code	Owner	Breed	Number of Cows	Average		
				Milk	%	Fat
<u>ANDREW-02</u>						
02-0015	Donald Hegeman	3	78.89	13,840	3.8	525
02-0023	Doyle G. Wertenberger	3	74.85	12,469	3.6	452
02-0029	Nelson Kapp	3	79.78	12,671	3.7	464
02-0036	Raymond-Ronald Schneider	3	137.93	13,962	3.6	505
<u>BARRY-04</u>						
04-0002	Nolan Meier	3	72.81	13,895	3.7	519
04-9004	Ernest Cowherd	3	68.97	14,618	3.6	524
04-0038	Harold Storck	3	41.80	12,677	3.7	469
04-0040	Larry Purdom	3	60.30	15,745	3.4	543
04-0044	Gordon Schad	3	44.61	12,782	3.3	427
04-0052	Ronald Edmondson	3	72.17	16,505	3.6	596
04-0058	Wilmer D. Weston	3	54.94	14,592	3.7	544
04-0062	Frank W. Kennedy	3	32.81	12,917	3.5	457
04-0069	D.A. Bowman	3	55.56	14,127	3.6	514
04-0072	William Eden	3	34.16	13,967	3.1	430
04-0073	Allen Keeling	3	61.79	13,413	3.6	477
04-0074	Alvin Brandt	3	52.89	12,740	3.1	401
<u>BARTON-05</u>						
05-0004	Delmer Kentner	4	71.71	9,319	5.4	505
05-0005	Robertson Dairy	3	187.67	13,932	4.0	556
05-0014	Don Morey	3	54.84	12,850	3.6	464
<u>BATES-06</u>						
06-9025	Steele and King	3	167.38	13,395	3.5	471
06-0026	Board Brothers	3	78.94	12,668	3.6	457
06-0029	Richard Buterbaugh	3	39.83	14,190	3.4	489
06-0036	Swickhamer Brothers	3	65.30	14,375	3.5	496
06-0040	Russell Chandler	3	67.98	12,133	3.6	433
06-0041	Clem Lesmeister	2	54.14	11,716	4.3	500
06-0042	H.J. & Terry Piepmeier	3	59.88	13,774	3.7	512
06-0049	Norvin Schenker	2	62.28	9,803	4.7	459
06-0052	Lindsey Brayton	2	31.42	10,519	4.3	457
06-0057	Marvin Jagels	3	66.68	14,277	3.6	508
06-0058	Jim Lincoln	3	39.36	12,525	3.7	464
<u>BENTON-07</u>						
07-0017	Clyde Rehmer	3	51.33	13,853	3.7	517
07-0021	R.D. French	3	36.15	13,823	3.6	497
<u>BOONE-09</u>						
09-9006	University of Mo. Holstein Farm	3	147.76	14,407	3.9	557
<u>CALLAWAY-12</u>						
12-0001	Raymond Atkinson	3	58.91	12,670	3.6	460
12-0007	State Hospital No. 1	3	152.54	13,929	3.6	503
12-0015	Harlan Borman	3	46.51	13,277	3.7	487
<u>CAPE GIRARDEAU-14</u>						
14-0009	Clem Schabbing	2	71.10	11,727	4.6	538
14-9014	S. E. Mo. University	3	49.45	13,747	3.2	445
14-0021	Daisy Dairyland	8	91.60	12,508	4.3	533
14-0029	Frank Milde	3	105.32	12,665	3.8	484
14-0032	Albert M. Gross	3	95.59	12,980	3.7	476

County and Herd Code	Owner	Breed	Number of Cows	Average		
				Milk	%	Fat
<u>CAPE GIRARDEAU-14 (Continued)</u>						
14-0037	Harvey Nischwitz	3	47.47	11,523	4.0	462
14-0038	Shawnee Farms	2	73.72	10,339	4.8	498
14-0042	Harvey M. Brase	3	100.90	12,170	3.7	447
14-0046	James Dairy Farm	3	104.98	13,592	3.8	516
14-0048	Siemers Farms Inc.	3	99.50	14,404	3.6	512
14-0049	Edgar Hecht	3	56.61	13,240	3.7	484
14-0054	Norman Brase	3	24.89	13,885	3.7	512
14-0057	Thomahawk Dairy	3	50.12	12,285	3.4	417
14-0059	Midway Dairy Farms	3	105.41	13,835	3.8	532
<u>CASS-16</u>						
16-0030	John H. Kohler, Jr.	3	139.90	12,814	3.6	463
16-0034	Ernest E. Schmoll	3	93.02	14,623	3.6	523
16-0045	Barnard Farm	3	42.86	14,216	3.5	504
16-9051	Charles R. Moreland	3	71.96	13,445	3.7	497
16-0052	Neil G. Kohler	3	113.60	13,692	3.6	489
16-0054	Coburn W. Schrock	3	43.74	12,780	3.4	430
16-0058	Yoder Brothers Dairy	3	77.22	12,433	3.4	419
16-0060	Urson Logue Jr.	3	55.91	13,373	3.7	490
16-0061	Paul Grinter	3	87.72	12,951	3.5	457
16-0065	Wilburn Farm	3	58.20	12,689	3.7	465
16-0066	John Phillip Kohler	3	88.44	12,762	3.6	465
<u>CEDAR-17</u>						
17-0021	Dale Hoover	3	58.19	13,253	3.6	477
<u>CHRISTIAN-19</u>						
19-0003	Walter Brazeale	2	31.91	11,742	4.5	527
19-9018	Joe King	3	92.30	14,281	3.8	541
19-9035	Albert Staiger	3	44.96	16,799	3.9	649
19-0048	Walter Staiger	3	17.99	18,077	3.7	675
19-9050	Carl E. Kastendieck	2	37.67	12,365	4.7	576
19-0054	Albo Farm - Albert Bos	3	32.02	17,074	3.6	622
19-0070	C.W. Barnhart	2	52.88	11,727	4.6	540
19-0073	Ray Gene Sims	3	48.76	12,773	3.7	471
19-9074	O.F. and Gene Staiger	3	36.52	18,762	3.7	699
19-0075	Estes Homestead Farm	4	20.79	9,726	4.9	479
19-0077	George W. Wright	3	37.47	13,323	3.8	503
19-0080	Joe Peebles	3	58.43	13,796	3.6	503
19-9090	Lor-Ed Farm	4	65.04	10,014	5.0	499
19-0093	George Simpson	3	55.42	12,779	3.7	478
19-0096	Joe Nelson and sons	3	43.30	14,859	3.8	561
19-0098	J & L & D Groves	3	60.08	13,858	3.7	510
19-0103	Shelby Hill	3	57.50	12,797	3.8	481
19-0106	Gene and Greg Short	3	24.82	12,164	3.5	431
19-0114	Edwin Ray	3	26.69	16,770	3.7	622
19-0115	Elmer Spree	3	30.74	14,733	3.5	509
19-0117	Bill Austin	3	26.64	13,607	3.7	504
19-0119	Huffman and Gimlin	3	124.33	12,821	3.7	474
19-0120	Paul Hull	3	27.51	12,345	3.8	468
<u>CLARK-20</u>						
20-9007	Howard-Harold Kirchner	3	34.92	12,761	3.6	455
<u>CLINTON-22</u>						
22-9001	Lloyd C. Bacon	3	66.75	16,208	3.7	606
22-9025	Shaverside Dairy Farm	3	73.47	15,315	3.8	580
22-0034	Kenton Schwarz	3	64.34	15,570	3.9	602
22-9035	Ralph L. Ensign	3	63.67	14,784	3.8	564
<u>COLE-23</u>						
23-0003	Raphael Frank	3	33.04	12,954	3.5	459
23-9013	Vanderfeltz Dairy	3	57.36	13,236	3.8	497
23-0018	Vincent F. Hoelscher	3	48.31	14,506	3.5	511
23-0033	Robert Cassmeyer	3	50.78	13,866	3.7	514
23-9034	C.T. Mertens	3	54.68	14,336	3.6	510

County and Herd Code	Owner	Breed	Number of Cows	Average		
				Milk	%	Fat
<u>COLE-23 (continued)</u>						
23-0035	William J. Thessen	3	41.75	14,249	3.5	505
23-0036	David O. Braun	3	68.82	14,550	3.6	530
23-0039	Scott Carrender	3	49.48	15,758	3.6	571
23-0043	Joe V. Scherr	3	65.54	12,392	3.6	451
<u>COOPER-24</u>						
24-9027	Richard Lenz	3	94.85	15,139	3.8	575
24-0030	Kenneth and Gail Lenz	3	61.74	14,156	3.7	518
24-0031	Paul and Jessie Birdsong	3	39.83	12,877	3.6	460
<u>DADE-26</u>						
26-0015	William L. Cruthcer	3	52.31	13,259	3.5	460
26-0017	Clifford Burns	3	82.35	12,653	3.3	423
26-0020	Larry W. and Judy McGuire	3	44.46	12,519	3.4	419
<u>DALLAS-27</u>						
27-0076	William C. Nimmo	8	41.07	13,523	3.7	496
27-0083	Don Sharp and sons	3	41.90	16,656	3.4	573
27-0106	Don W. Bass	3	70.33	12,595	3.2	406
27-0109	Double E Dairy	3	142.45	12,456	3.6	446
<u>DAVISS-28</u>						
28-0011	Clarence Clark	3	73.76	13,936	3.7	518
<u>DEKALB-29</u>						
29-9025	Duane Blodgett	3	23.66	15,795	3.5	557
<u>DOUGLAS-31</u>						
31-0020	Hershell Letsinger	3	48.93	14,656	3.8	560
31-0021	C.M. Letsinger	3	49.59	13,680	3.9	537
31-0027	Ray Watterson	3	48.80	17,125	3.6	617
31-0028	James D. Watterson	3	52.46	16,655	3.8	640
31-9031	Martin Verburgt	4	32.93	9,268	5.0	465
31-0032	Elton Johnston	3	25.61	12,651	3.6	449
31-0033	Leo Thompson	3	38.88	13,225	3.6	483
31-0040	Roland R. Kane	3	42.07	13,929	3.6	504
31-0045	Bob Watterson	3	46.44	13,971	3.5	488
31-0046	Louis Gillespie	3	51.75	13,751	3.6	495
31-0047	John Hart	3	46.06	12,736	3.6	460
<u>FRANKLIN-33</u>						
33-9020	Karl B. Althage	3	80.39	13,457	3.7	499
33-0022	S.U. Prichard Farm	3	63.05	16,910	3.5	597
33-0025	Haventon Farms	3	91.51	13,149	3.6	477
33-9027	Wilfred Dryer	3	48.52	15,666	3.7	572
33-0031	Marvin A. Sprick	2	55.68	10,462	4.7	496
33-0034	High Ridge Dairy Farms	3	71.34	16,385	3.6	591
33-0035	Grimm Dairy Farm	3	95.21	13,787	3.7	514
33-0036	Wilbert Holtmeier	3	31.89	12,465	3.5	435
33-0040	Gilbert Wesselschmidt	3	58.92	14,021	3.9	549
33-9041	John L. and Robert Bunge	3	68.66	13,187	3.9	510
33-0042	Carl Bros	5	74.76	13,628	4.0	540
33-0046	Wayne A. Freitag	3	41.99	11,993	3.8	457
33-0047	Victor Voss	3	46.51	14,025	3.7	519
33-0048	Roy W. Koch	3	32.91	12,379	3.7	461
33-0054	George J. Kampschroeder	3	30.88	12,306	3.4	420
33-0055	Purina Research Farm Dairy	3	142.92	12,680	3.6	459
33-0058	Leland S. Unger	2	64.16	10,179	4.7	474
<u>GREENE-35</u>						
35-9023	Francis French and son	3	61.31	14,306	3.5	503
35-0065	Robert C. and George Quinn	3	31.13	12,396	3.6	451
35-9069	Robert Thomson Jr.	3	68.83	18,107	3.6	656
35-0109	Cox and Davis	3	166.67	14,055	3.4	480
35-9121	J. Berglund	4	9.45	9,714	5.1	491
35-0131	Fielden Bros.	3	93.39	12,785	3.8	487
35-0143	Don Abernathy	3	96.50	12,194	3.6	440
35-0159	Claude and Suzy Blades	3	44.58	15,664	3.8	601
35-0160	Glen Hancock	3	78.02	13,584	3.8	515
35-0164	Rose Brothers	3	79.20	16,284	3.6	588
35-0166	Dane and Gary Lewis	3	56.04	13,681	3.7	506
35-0180	James P. and James D. Quinn	3	29.88	14,029	3.3	459
35-9182	Ronald Silverthorn	3	18.40	15,717	3.5	556

County and Herd Code	Owner	Breed	Number of Cows	Average		
				Milk	%	Fat
<u>GRUNDY-36</u>						
36-0004	John H. Erp	3	34.58	16,082	3.8	617
36-0008	Carl F. Parker	3	54.58	16,905	3.4	575
36-0038	J.W. Kilburn	3	47.68	16,265	3.6	578
<u>HARRISON-37</u>						
37-0045	Irl G. Slaughter	3	38.72	13,621	3.4	464
<u>HENRY-38</u>						
38-0003	Jerry Jerome	3	61.33	12,496	3.3	418
38-0019	Keck Brothers Dairy	3	57.39	14,475	3.6	519
38-0020	Joe T. Cook	3	35.36	12,418	3.4	428
<u>HICKORY-39</u>						
39-0024	Gale G. Snow	3	67.95	14,333	3.6	511
39-0025	Gerald Vanderford	3	238.82	13,315	3.7	489
39-0028	Paul Vanderford	3	69.53	13,061	3.7	478
<u>HOWELL-42</u>						
42-0007	Proffitt Farms	3	68.98	13,919	3.7	514
<u>JACKSON-43</u>						
43-9005	Stanley E. Curtis	3	49.06	12,746	3.4	432
43-0026	Dennis Shrout	3	308.61	12,975	3.3	433
43-0047	Don Elefson	3	96.73	12,977	3.5	455
43-0050	Shrout Brothers Dairy	3	369.77	11,972	3.8	458
<u>JASPER-44</u>						
44-0051	Jerry Weldy	3	114.92	14,758	3.6	538
44-0061	J.H. Hubler	3	43.24	14,443	3.5	504
44-0072	Sammy Wickstrom	3	68.12	12,758	3.6	462
44-0077	J.B. Kunkel	4	44.38	9,187	5.4	492
44-9082	Carl Flenniken and sons	3	62.60	13,026	3.6	470
44-0088	Theodore and Gaylen Rush	8	76.49	11,605	4.2	485
<u>JOHNSON-46</u>						
46-0006	Norman Briscoe	3	54.78	15,725	4.0	623
46-0009	Tevis Farms Inc.	3	48.38	17,416	3.7	651
46-0022	Joe Groom	3	56.38	13,507	3.9	530
46-0025	James H. Fender	3	44.93	14,396	3.7	534
46-0026	Joe Burden	3	84.24	12,888	3.9	497
46-9029	Harlan E. Cochran	4	66.67	9,384	5.2	485
46-0032	Kenyon Snow	3	39.55	13,358	3.9	525
46-0036	Robert Gard	3	28.03	12,301	3.9	482
46-0037	Cecil Campbell	3	59.74	13,909	3.8	534
46-0038	E.A. Terrell	3	55.13	14,045	3.8	531
46-0041	Clyde A. Mudd	3	102.80	12,273	3.7	449
46-0055	Curtis Brockhaus	3	42.05	12,994	3.9	501
<u>LACLEDE-48</u>						
48-0006	Thomas Southard	3	29.24	15,106	3.4	517
48-0054	Green Valley Dairy	3	124.13	12,190	3.3	404
48-0078	W.C. Hoffman	3	51.68	13,344	3.5	473
48-0087	Elam Dairy	3	90.85	12,664	3.3	418
48-0088	Delbert L. Feeney	3	47.53	14,269	3.5	498
<u>LAFAYETTE-49</u>						
49-0037	Maurice Hughes	3	37.01	15,080	3.5	523
49-0039	Elvyn E. Verdught	3	52.59	13,649	3.2	434
49-0045	Fritz and Ken Nierman	3	81.28	13,054	3.8	491
49-0051	Norman and Betty Williams	3	48.77	13,420	3.7	498
49-0056	Robert Ramey	3	53.34	13,086	3.8	495
49-0059	Elbert Kuecker	3	38.93	12,731	3.5	448
<u>LAWRENCE-50</u>						
50-0052	James Moennig	3	67.61	12,970	3.7	483
50-0057	Dale Spencer	3	40.32	12,723	3.4	431

County and Herd Code	Owner	Breed	Number of Cows	Average		
				Milk	%	Fat
<u>LAWRENCE-50</u> (continued)						
50-0065	Reno G. Krueger	3	89.07	14,174	3.6	511
50-0072	E.K. Hoggard	3	93.63	12,707	3.6	458
50-0081	Jerry Stine	3	61.67	14,557	3.7	533
50-0151	Kenneth Stone	3	94.05	13,186	3.6	470
50-0158	Richard Ray	3	35.82	15,025	3.1	473
50-0162	Hershel Worm	3	51.38	12,034	4.1	489
50-0166	Head Jersey Farm	4	124.62	9,192	4.9	454
50-0168	Gary Fulp	3	69.57	13,424	3.7	490
<u>LEWIS-51</u>						
51-0023	Robert Taylor	2	50.63	10,030	4.9	486
51-0028	Lester Hoffman	3	71.31	13,213	3.7	487
51-0033	Cecil Garkie	3	33.51	13,859	3.7	516
<u>LINCOLN-52</u>						
52-0005	Palmer Farms	3	149.68	12,457	3.9	491
52-0006	Champ Goodwood Farms	3	171.19	13,310	3.4	453
52-0008	Boedeker Bros.	3	151.82	15,449	3.6	562
<u>MACON-55</u>						
55-0019	W. Ronald Dye	3	33.41	13,406	3.6	484
<u>MARION-58</u>						
58-0046	Marvin Frankenbach	2	74.47	10,756	5.1	546
58-0047	Brinkmeier and Hudson	3	69.65	12,455	3.8	468
58-0049	Carl-Robert Frankenbach	2	87.39	11,906	5.0	593
<u>MERCER-59</u>						
59-0001	Powell Agri Industries	3	97.79	12,404	3.6	447
<u>MONITEAU-61</u>						
61-0013	David Gier	3	67.06	12,226	3.7	454
<u>MONTGOMERY-63</u>						
63-0006	Miller Meadows Inc.	3	73.55	13,445	3.7	504
<u>MORGAN-64</u>						
64-0026	Delmon Marriott	3	31.57	14,257	3.6	517
64-9027	T.B. Hitchcock	5	22.82	14,860	4.2	621
64-0033	J.L. Gingerich	3	47.67	12,144	3.5	419
<u>NEWTON-65</u>						
65-0017	C.A. Gilman	3	121.58	15,845	3.6	564
65-0042	Leonard J. Goodman	3	100.30	14,552	3.8	551
<u>NODAWAY-66</u>						
66-9002	Conception Abbey	3	74.14	12,449	3.7	459
66-0024	Don Adwell	3	52.92	13,734	3.4	468
66-0026	Kirby Hanson	3	56.47	14,498	3.6	519
66-0027	Jack and Edith Lyle	3	37.18	12,351	3.5	430
66-0028	Alan and Delma Goodspeed	3	17.36	13,796	3.8	528
<u>OREGON-67</u>						
67-0002	Dave W. Norman	3	29.69	14,503	3.6	526
67-0017	Albert F. Prewitt	3	53.01	12,243	3.6	447
<u>OSAGE-68</u>						
68-0002	John and William Fick	3	55.25	17,611	3.7	648
68-0005	Walter F. Rehagen	3	64.44	12,699	3.6	461
68-0015	Alex Reinkemeyer	3	48.39	15,309	3.7	569
<u>OZARK-69</u>						
69-0004	Bob Snelson	3	71.01	13,225	3.7	483

County and Herd Code	Owner	Breed	Number of Cows	Average		
				Milk	%	Fat
<u>PERRY-70</u>						
70-0009	Chalmer Voelker	5	42.70	11,415	4.1	467
70-0010	Jo-Ke-Mo Dairy	3	44.28	12,624	3.5	444
70-0013	Frank Sutterer	3	36.74	12,107	3.8	456
70-0016	Sylvester Bohnert	3	25.92	15,733	3.8	603
70-0017	Elton V. Koch	3	44.12	12,482	3.7	459
70-0018	Palmer Fritsche	3	81.58	14,772	3.7	543
70-0020	Herbert A. Kramer	3	55.94	14,993	3.4	507
70-0021	Leonard Palisch	3	39.94	12,411	3.7	460
<u>PETTIS-71</u>						
71-0007	Robert N. and E.P. Longan	3	57.21	15,172	3.8	571
71-0022	Cloyd Merk	3	46.56	12,249	3.8	462
71-0026	Roland L. Oelrich	3	71.51	12,983	3.7	485
71-0030	Paul E. Davis	3	95.55	14,202	3.6	505
<u>PHELPS-72</u>						
72-0013	Gerald Pietsch	3	183.01	12,747	3.5	446
<u>PLATTE-74</u>						
74-0016	Richard L. Faris	3	23.80	13,588	3.7	501
<u>POLK-75</u>						
75-0003	Glen Breshears	3	33.31	14,350	3.2	464
75-0008	Clark and Fred Johnson	3	57.71	13,192	3.6	478
75-0075	Raymond G. Sechler	3	124.30	14,272	3.6	519
75-9102	Boyd Brothers	3	29.83	16,041	3.7	596
75-0130	W. G. Fieth	8	54.27	12,464	3.5	441
75-0154	Larry Laney	3	62.46	14,428	3.6	517
75-0155	Frank Artz	3	41.12	13,813	3.7	509
75-0156	Gallivan Farms	3	63.49	14,974	3.5	519
75-0157	Lonnie Weatherly	3	105.26	15,956	3.6	578
75-0161	Leroy Seiner	3	137.69	13,290	3.6	477
75-0162	Benny and Dixie Barber	3	49.52	15,141	3.7	558
75-0165	Fairview Crest Farm	3	76.25	16,118	3.6	582
75-0167	Frank Samek, Jr.	3	52.73	14,024	3.8	526
75-0503	Billy Underwood	3	35.55	12,467	3.4	424
<u>RALLS-77</u>						
77-0013	N.E. Williams	2	70.90	13,288	4.7	628
<u>RANDOLPH-78</u>						
78-0016	Ed L. Sander and son	3	55.55	13,462	3.6	488
<u>ST. CHARLES-81</u>						
81-0010	Cluesner Brothers Inc.	4	65.53	10,049	5.4	544
81-0033	Francis Kessler	3	124.98	13,836	3.7	518
81-0036	Bierbaum Bros.	2	58.65	10,691	4.9	528
<u>ST. CLAIR-82</u>						
82-0012	H & B Farm and Dairy	3	44.23	12,313	3.5	426
<u>ST. FRANCOIS-83</u>						
83-0022	Ches-Nan Ott Dairy	3	35.20	12,980	3.6	464
<u>SCOTT-88</u>						
88-0002	Arnold B. Heuiser	3	51.53	15,034	3.5	532
88-0005	Carl Schlitt	3	42.92	13,705	3.5	486
<u>SHELBY-89</u>						
89-9002	Buckman Brothers	3	131.85	12,364	3.7	456
<u>STODDARD-90</u>						
90-0004	Hicks and Mothersbaugh	3	40.96	13,560	3.3	445
90-0501	Ray Van Dusseldorp	3	55.35	13,827	3.7	517
90-0514	J.D. Gadberry	3	55.99	13,065	3.9	509



County and Herd Code	Owner	Breed	Number of Cows	Average		
				Milk	%	Fat
<u>TANEY-92</u>						
92-9002	School of the Ozarks	3	107.40	13,178	3.3	439
<u>TEXAS-93</u>						
93-0037	Charles and Ann Miller	3	52.58	14,642	3.3	481
<u>VERNON-94</u>						
94-0010	Garton Dairy Farms	3	110.18	13,737	3.7	514
94-0020	Rollin Acre Dairy	3	28.89	12,617	3.6	458
<u>WARREN-95</u>						
95-0002	Wilbert A. Hackmann	3	84.22	12,685	3.6	456
95-0008	Lester Witthaus	3	43.14	14,604	3.8	550
<u>WEBSTER-97</u>						
97-0031	Jack Herman	3	43.93	16,060	3.6	571
97-0064	Raymond Atkinson and sons	3	72.42	14,071	3.4	478
97-0069	L. R. and Wayne Whitehead	2	95.16	11,702	4.4	515
97-0085	Jerry Ballard	3	57.99	12,954	3.6	464
97-0103	George Kanel	3	50.62	13,048	3.4	439
97-0163	Raymond Cass	3	94.04	12,212	3.6	434
97-9220	Arthur Lorenz	3	40.55	13,263	3.8	510
97-0228	Kirby Younes	3	31.75	14,346	3.4	482
97-0235	Phil Ewing	3	83.50	14,208	3.7	532
97-0236	Charles L. Turner	3	49.44	13,230	3.4	453
97-0256	Don Hutton	3	21.23	12,341	3.6	439
97-0258	John and Travis Brown	3	100.73	13,263	3.3	438
97-0260	Virgil Young	4	23.39	9,427	4.9	462
<u>WRIGHT-98</u>						
98-0013	Ernest Edgerton	4	40.96	11,702	4.6	543
98-0040	Chester Benton	3	81.31	13,394	3.8	505
98-0044	Hymal Jones	3	40.81	13,435	3.7	492
98-0050	Roy Clouse	3	52.15	15,214	3.5	536
98-0067	Woodland Valley Farms	3	77.05	12,563	3.8	473
98-0069	Billy Clouse	3	66.12	15,746	3.6	573
98-0071	Johnny Watterson	3	45.53	14,658	3.5	506
98-0075	Dan Nichols	3	58.72	12,529	3.5	437
98-0083	Donald Horn	3	52.00	12,167	3.5	429
98-0085	Jimmie Thornhill	3	58.48	13,608	3.9	524
98-0096	Donald R. Adamson	3	73.65	12,220	3.7	450



FOUR COUNTY (#22) continued

28-0011 Clarence Clark  
 29-0024 John Donovan  
 02-7041 Tom Miller  
 11-0015 Kenneth Gates  
 11-0026 Junior Eads  
 22-0028 Tri Honor Farm  
 22-0030 Hanes Clark  
 22-0036 Max Wiedmaier  
 22-0040 Greaves Dairy Farm  
 22-0041 Paul McClanahan  
 28-0071 MMM Dairy Farm  
 29-7026 Rex Deshon, Jr.  
 29-0028 Glen Castle

COLE (#23)

23-0002 Church Farm Dairy  
 23-0003 Raphael Frank  
 23-9013 Vanderfeltz Dairy  
 23-0018 Vincent Hoelscher  
 23-0027 James Distler  
 23-0029 Elliott Case  
 23-0033 Robert Cassmeyer  
 23-9034 C.T. Mertens  
 23-0035 William Thessen  
 23-0036 David Braun  
 23-0037 Tom Lepage  
 23-0039 Scott Carrender  
 23-0043 Joe Scherr  
 23-0044 Lincoln University  
 61-0003 Freddie Snyder  
 61-0013 David Gier  
 23-7038 Arthur Hein

DALLAS (#27)

27-0014 Tucker Brothers  
 27-0032 Glenn Maple  
 27-0047 Rue Patrick  
 27-0066 James Smith  
 27-0076 Wm. C. Nimmo  
 27-0083 Don Sharp & sons  
 27-0106 Don W. Bass  
 27-0109 Double E Dairy  
 27-0527 Lloyd Gunter  
 27-7070 James Maynard  
 27-7080 Wallace Hicks  
 27-7087 Frank Rice  
 27-7092 Vernon & Ben Hostetler  
 27-7102 H. Leon Dill & sons  
 27-7107 James R. Reed  
 27-7522 John Christian  
 35-7175 Larry Lee

DOUGLAS (#31)

31-0020 Hershell Letsinger  
 31-0021 C.M. Letsinger  
 31-0027 Ray Watterson  
 31-0028 James Watterson  
 31-9031 Martin Verburt  
 31-0032 Elton Johnston  
 31-0033 Leo Thompson  
 31-0037 R. Nash and C. Claar  
 31-0038 David Crighton  
 31-0040 Roland Kane  
 31-0044 Herbert Finley  
 31-0045 Bob Watterson  
 31-0046 Louis Gillespie  
 31-0047 John Hart  
 31-0048 Mitchell Peebles  
 69-0004 Bob Snelson  
 69-0006 Larry Hicks

DOUGLAS (#31) continued

97-0236 Charles Turner  
 98-0069 Billy Clouse  
 98-0071 Johnny Watterson  
 31-7039 Glenn King  
 31-7049 Louis Pederson  
 31-7050 Ray Carroll  
 69-7002 Ray Martin  
 69-7005 William Bradt  
 98-7080 Zions Order Inc.  
 98-7092 William Reuter  
 98-7094 Eugene Poplawski

FRANKLIN (#33)

33-0001 Francis Aholt  
 33-0013 Richard Raaf  
 33-0016 Cove View Farm  
 33-9020 Karl B. Althage  
 33-0022 S.U. Prichard Farm  
 33-0025 Haventon Farms  
 33-9027 Wilfred Dryer  
 33-0031 Marvin Sprick  
 33-0034 High Ridge Dairy Farms  
 33-0035 Grimm Dairy Farm  
 33-0036 Wilbert Holtmeier  
 33-0040 Gilbert Wesselschmidt  
 33-9041 John & Robert Bunge  
 33-0042 Carl Bros.  
 33-0046 Wayne Freitag  
 33-0047 Victor Voss  
 33-0048 Roy Koch  
 33-0054 George Kampschroeder  
 33-0055 Purina Res. Farm  
 33-0058 Leland Unger  
 34-0011 Preview Farm  
 52-0005 Palmer Farms  
 52-0006 Champ Goodwood Farms  
 52-0008 Boedeker Bros.  
 81-0033 Francis Kessler  
 81-0036 Bierbaum Bros.  
 81-0037 Walter Bade  
 95-0002 Wilbert Hackmann  
 95-0008 Lester Witthaus  
 33-7043 John Boland  
 33-7057 Gerdes & Benz Farm  
 33-7059 Gerdes & Benz Farm  
 81-7038 Felix Struckhoff  
 95-7009 Gerald & John Kluesner

GREEN HILLS (#34)

18-0001 Joseph Meissen  
 47-0008 Richard Barnes  
 55-0019 W. Ronald Dye  
 55-0020 Barry Ford  
 87-0002 James Moran  
 87-0003 Allen Quintin  
 90-0519 Stan Richardson  
 90-0520 Jerald Walker  
 01-7020 George Martens

GRAND RIVER (#36)

36-0004 John H. Erp  
 36-0005 Alice Hoffman & sons  
 36-0008 Carl Parker  
 36-0038 J.W. Kilburn  
 36-0049 Warren Kirby  
 36-0050 Everett Thompson  
 36-0051 Diamond K Dairy  
 36-0052 Leon Trump  
 36-0053 Clifford Vandevender Jr.  
 47-0514 Sullivan Co. Cheese co.

GRAND RIVER (#36) continued

59-0001 Powell Agri Ind.  
 59-0009 Jon Renfro  
 90-0501 Ray Van Dusseldorp  
 90-0514 J. D. Gadberry  
 90-0517 Olmstead and sons  
 36-0014 Veatch Dairy  
 36-7033 Wm. Siebenborn  
 36-7047 Floyd Trump  
 59-7012 Jim Miller

HARRISON (#37)

37-0006 W.W. Hendren  
 37-0045 Irl Slaughter  
 37-0050 Melvin Hillyard  
 37-7047 Gerald Pontius  
 37-7048 Thomas Harrison  
 37-7049 Larry Eivins

HOWELL (#42)

42-0007 Proffitt Farms  
 42-0028 Hall Farms  
 42-0040 Howard Jackson  
 67-0002 Dave Norman  
 67-0017 Albert Prewitt  
 88-0505 Leroy Hensley

JASPER-BARTON (#44)

05-0004 Delmer Kentner  
 05-0005 Robertson Dairy  
 05-0007 Selveys Plantation  
 05-0011 Don Pfander  
 05-0013 Alfred Banwart  
 05-0014 Don Morey  
 05-0023 Clyde Hinger  
 05-0029 Scott Brothers  
 44-0051 Jerry Weldy  
 44-0061 J.H. Hubler  
 44-0072 Sammy Wickstrom  
 44-0073 Jess Hoover  
 44-0077 J.B. Kunkel  
 44-0078 Elvin Ummel  
 44-9082 Carl Flenniken  
 44-0085 Lloyd Miller  
 44-0086 Wilbur Flowers  
 44-0087 Jack McCormick  
 44-0088 Theodore Rush  
 44-0004 David Harris  
 44-0064 D. D. McCormick  
 44-7092 Paul Cossey

JEFFERSON (#45)

45-7024 Calvin Lindwedel

JOHNSON (#46)

46-0006 Norman Briscoe  
 46-0009 Tevis Farms Inc.  
 46-0010 Frank Spicer  
 46-0017 Specker Brothers  
 46-0022 Joe Groom  
 46-0025 James Fender  
 46-0026 Joe Burden  
 46-9029 Harlan Cochran  
 46-0032 Kenyon Snow  
 46-0033 John Colster  
 46-0034 Nolan Dyer  
 46-0036 Robert Gard  
 46-0037 Cecil Campbell  
 46-0038 E.A. Terrell  
 46-0041 Clyde Mudd  
 46-0044 Leland Stowell

JOHNSON (#46) continued

46-9047 Marvin Parrott  
 46-0055 Curtis Brockhaus  
 46-9058 Connell Jerseys  
 49-0056 Robert Ramey  
 46-7027 O.J. Currie  
 46-7053 William Colster  
 46-7054 Davidson Farms  
 46-7059 Kenneth Martin

LACLEDE (#48)

48-0006 Thomas Southard  
 48-0054 Green Valley Dairy  
 48-0057 Ronald Young  
 48-0059 David Wissbaum  
 48-0075 Charles Peirand  
 48-0076 John Palmer  
 48-0078 W.C. Hoffman  
 48-0083 Corrys Farm  
 48-0086 Jerry Stenson  
 48-0087 Elam Dairy  
 48-0088 Delbert Feeny  
 48-7063 James Caufield  
 48-7067 Merlin Triplett  
 48-7069 Howard McClure  
 48-7071 Ronald Wolken  
 48-7072 Elvin Bohannon

LAFAYETTE (#49)

15-0009 Jimmie Clemens  
 15-0013 Esten  
 22-9001 Lloyd Bacon  
 43-0004 Athol Cummins  
 43-9005 Stanley Curtis  
 43-0026 Dennis Shroat  
 43-0047 Don Elefson  
 43-0050 Shroat Brothers  
 49-0012 D.A. Meinershagen  
 49-0028 C.W. Hook  
 49-0035 Orville Williams & son  
 49-0037 Maurice Hughes  
 49-0039 Elvyn Verdught  
 49-0045 Fritz Nierman  
 49-0051 Norman & Betty Williams  
 49-0059 Elbert Kuecker  
 49-0070 Kenneth Branson  
 86-0002 Davis Dairy  
 15-7022 Gayle Griffin  
 15-7027 John Shirley  
 15-7028 Lewis Doss  
 43-7051 Fairview Cowplex Inc.  
 46-7045 Wilbert Freund  
 49-7043 Alvin Nierman  
 49-7047 Kenneth Rechterman  
 49-7050 Don Erdman  
 49-7061 Marvin Whitsitt  
 49-7062 Alfred Nierman  
 49-7064 Vernon Shisler  
 49-7066 Vernon Schlesselman  
 49-7073 Marvin Dittmer  
 49-7075 Delmar & Stanley Oetting  
 49-7077 James Emison  
 49-7078 Roger Schelp  
 53-7018 Floyd Spainhour  
 53-7019 Lavere Wampler

LAWRENCE (#50)

26-0010 Oral Daniel  
 50-0002 Wm. Davis  
 50-0052 James Moennig

LAWRENCE (#50) continued

50-0057 Dale Spencer  
 50-0065 Reno Krueger  
 50-0069 Paul Calico  
 50-0072 E.K. Hoggard  
 50-0075 Ernese Graves  
 50-0081 Jerry Stine  
 50-0083 Michael Burleson  
 50-0112 Bill Buehler  
 50-0151 Kenneth Stone  
 50-0153 Alvin Ennis  
 50-0155 Madewell Production  
 50-0156 John Berry  
 50-0158 Richard Ray  
 50-0162 Hershel Worm  
 50-0166 Head Jersey Farm  
 50-0168 Gary Fulp  
 04-7064 Robert Miller  
 35-7157 James Stanton  
 50-7001 Henry Freiburger  
 50-7025 W. Dale Waggoner  
 50-7052 James Moennig  
 50-7063 Wilburn Buehler  
 50-7074 Preston Cheek  
 50-7091 Charles Wiehe  
 50-7093 C.W. Simpson  
 50-7149 Keith Terry  
 50-7163 Lane Parker

NORTHEAST (#58)

20-9007 Howard-Harold Kirchner  
 20-0008 Harlan Hunziker  
 51-0023 Robert Taylor  
 51-0026 Robert Cary  
 51-0028 Lester Hoffman  
 51-0030 Bill Hinkle  
 51-0033 Cecil Garkie  
 58-0024 Donald Atkins  
 58-0043 George Keller  
 58-0044 Wm. Kaden  
 58-0045 Earl Meyer  
 58-0046 Marvin Frankenbach  
 58-0047 Brinkmeier & Hudson  
 58-0049 Carl-Robert Frankenbach  
 77-0013 N.E. Williams  
 51-7015 Don Waterman  
 51-7027 George Hoffman

MORGAN (#64)

07-0023 Richard Balke  
 13-0003 Bill Hays  
 64-0020 Marriott Bros.  
 64-0026 Delmon Marriott  
 64-9027 T.B. Hitchcock  
 64-9029 Kleins Jersey Farm  
 64-0033 J.L. Gingerich  
 61-7022 Claud Woolery  
 64-7031 Koerner Bros. Dairy  
 64-7032 Adin Kilmer  
 64-7035 Douglas Unruh  
 64-7036 Ivan Zimmerman  
 64-7037 Leroy Young

NEWTON-MCDONALD (#65)

65-0017 C.A. Gilman  
 65-0042 Leonard Goodman  
 65-0021 A.C. Petty  
 65-0046 Harold Fenske  
 65-0054 Roy Springer  
 65-0055 Danny Bartkoski

NEWTON-MCDONALD (#65) continued

65-0056 Billy White  
 65-0058 Stipp Dairy Farm  
 65-0061 Corley Baker

OSAGE (#68)

68-0002 John & William Fick  
 68-0005 Walter Rehagen  
 68-0009 Ar-Ke Holstein Farm  
 68-0010 E and R Schwinke  
 68-0015 Alex Reinkemeyer  
 68-7019 Kenneth Gelven  
 68-7021 Wansing Bros.  
 68-7024 Eugene Luebbering  
 68-7027 Donald Brandt  
 68-7034 Doug Schmitt  
 68-7036 Rademacher Bros.

PERRY (#70)

14-0021 Daisy Dairyland  
 14-0029 Frank Milde  
 14-0030 Charles Engelhard  
 14-0034 Mrs. Emil Peetz & son  
 14-0035 L. R. & Harold Pensel  
 14-0037 Harvey Nischwitz  
 14-0038 Shawnee Farms  
 14-0049 Edgar Hecht  
 14-0058 Schoen Farms  
 70-0004 Joseph Moll  
 70-0009 Chalmer Voelker  
 70-0010 Jo-Ke-Mo Dairy  
 70-0012 A.J. Huber & son  
 70-0013 Frank Sutterer  
 70-0016 Sylvester Bohnert  
 70-0017 Elton Koch  
 70-0018 Palmer Fritsche  
 70-0019 Melvin McMillan  
 70-0020 Herbert Kramer  
 70-0021 Leonard Palisch  
 88-0005 Carl Schlitt  
 14-7056 Paul Wichern  
 70-7023 Eldor Bock  
 70-7024 Clyde Rousseau  
 70-7025 Russell Brandes

PETTIS (#71)

07-0016 Robert Wilshussen  
 07-0017 Clyde Rehmer  
 07-0021 R.D. French  
 24-9027 Richard Lenz  
 24-0030 Kenneth & Gail Lenz  
 24-0031 Paul Birdsong  
 24-0032 Richard Lenz  
 24-0033 Eldon Lenz  
 71-0007 Robert Longan  
 71-0022 Cloyd Merk  
 71-0026 Roland Oelrich  
 71-0027 Ned Monsees  
 71-0029 Larry McCollester  
 71-0030 Paul Davis  
 71-0034 Hansen & Yeater Dairy  
 71-0035 Everett Billings  
 07-7020 W.A. Raetz

PHELPS (#72)

72-0013 Gerald Pietsch

PLATTE (#74)

74-0016 Richard Faris

POLK (#75)

75-0003 Glen Breshears  
 75-0008 Clark & Fred Johnson  
 75-0075 Raymond Sechler  
 75-9102 Boyd Bros.  
 75-9123 Joseph Hubbert  
 75-0130 W.G. Fieth  
 75-0154 Larry Laney  
 75-0155 Frank Artz  
 75-0156 Gallivan Farms  
 75-0157 Lonnie Weatherly  
 75-0159 J.H. Looney  
 75-0161 Leroy Seiner  
 75-0162 Benny Barber  
 75-0165 Fairview Crest Farm  
 75-0167 Frank Samek  
 75-0503 Billy Underwood  
 75-7115 Meek Dairy Farm  
 75-7121 Lendell Voris  
 75-7130 W.G. Fieth  
 75-7132 Bobby Joe Smith  
 75-7133 Mendel Williams  
 75-7143 Cowden and Dilday  
 75-7147 Eddie Gorden  
 75-7160 James F. Locke  
 75-7163 Jim Tindle  
 75-7164 John Locke  
 75-7168 Stanley Miller  
 75-7518 Clifford Massie

ST. CHARLES (#81)

81-0010 Kluesner Bros. Inc.  
 85-9006 James Morrison

ST. FRANCOIS (#83)

83-9011 Sunnymede Farm  
 83-0014 Eugene Kollmeyer  
 83-0017 Govro Brothers  
 83-0019 Robert Hager  
 83-0022 Ches-Nan Ott Dairy

SALT RIVER (#89)

41-0020 Fred Stroupe  
 76-0508 Richard Morgan  
 78-0002 John Gutekunst  
 78-0005 McCormick, Crutcher  
 78-0014 Samuel Messer  
 78-0016 Ed Sander  
 89-9002 Buckman Bros.  
 90-0515 Harold Gooch  
 62-7019 Roy Hall

TEXAS (#93)

93-0037 Charles Miller  
 93-0039 Whetstine Farms Inc.  
 93-0040 Jim Brailler  
 93-0041 Bruce Wolfe  
 93-0042 Walter Douglas  
 93-0044 William Ausfin  
 93-0046 Walter Scott  
 93-0047 W & D Vangenderen  
 93-0049 Ray Hobbs  
 93-0052 Steven Foster

WEBSTER (#97)

97-0001 Bonnie Carrie Farm  
 97-0031 Jack Herman  
 97-9038 Daypeck Jersey Farm  
 97-0049 Joe & Dan Clemens  
 97-0059 James Vestal

WEBSTER (#97) continued

97-0064 Raymond Atkinson & sons  
 97-0069 L.R. & Wayne Whitehead  
 97-0085 Jerry Ballard  
 97-0221 Miller Dairy Farm, Inc.  
 97-0226 James Morgan  
 97-0228 Kirby Younes  
 97-0233 Don Alexander  
 97-0256 Don Hutton  
 97-0259 Neil Elwood  
 97-0260 Virgil Young  
 97-0257 F.L. Taylor

WRIGHT (#98)

98-0004 Latimer Farms  
 98-0013 Ernest Edgerton  
 98-0040 Chester Benton  
 98-0042 Lawrence Getz  
 98-0044 Hymal Jones  
 98-0049 D.L. Claxton  
 98-0050 Roy Clouse  
 98-0052 Donald Ballard  
 98-0054 Wallace Calton  
 98-0056 Charles Clark  
 98-0063 Half String Jersey Farm  
 98-0066 Howard Davis  
 98-0067 Woodland Valley Farms  
 98-0075 Dan Nichols  
 98-0077 Everett Stewart  
 98-0078 Glen Ussery  
 98-0083 Donald Horn  
 98-0084 David Benson  
 98-0085 Jimmie Thornhill  
 98-0087 Bobby Thornhill  
 98-0089 Curtis Hoover  
 98-0095 Bob Hetherington  
 98-0096 Donald Adamson  
 98-0097 Bruce Helsley  
 98-0015 Howard Tribble

SOUTHWEST (#99)

19-0093 George Simpson  
 19-0096 Joe Nelson & sons  
 19-0098 J & L Groves  
 19-0103 Shelby Hill  
 19-0106 Gene & Greg Short  
 19-0114 Edwin Ray  
 19-0115 Elmer Spree  
 19-0117 Bill Austin  
 19-0119 Huffman and Gimlin  
 19-0120 Paul Hull  
 19-0121 C.J. Fuller  
 19-0122 Peggy Hays  
 35-9023 Francis French & son  
 35-9036 Kindrick Bros.  
 35-0065 Robert Quinn  
 35-9069 Robert Thomson Jr.  
 35-0109 Cox and Davis  
 35-9121 J. Berglund  
 35-0127 Carl Brown  
 35-0131 Fielden Bros.  
 35-9136 Mar Gale Farms LTD  
 35-0143 Don Abernathy  
 35-0150 Owen Jersey Farm  
 35-0156 Don McElhany  
 35-0159 Claude Blades  
 35-0160 Glen Hancock  
 35-0163 Dorethea Jacobson  
 35-0164 Rose Brothers  
 35-0166 Dane & Gary Lewis

SOUTHWEST (#99) continued

35-0170 Billy & Larry Yarberry  
 35-0174 Don Farmer & sons  
 35-0180 James Quinn  
 35-0181 Johnny Wallis  
 35-9182 Ronald Silverthorn  
 97-0103 George Kanel  
 97-0163 Raymond Cass  
 97-9220 Arthur Lorenz  
 97-0235 Phil Ewing  
 97-0241 William Overholt  
 97-0258 John & Travis Brown  
 19-0062 Ivan Hedgpeth  
 19-0094 Wesley Roller  
 19-0109 Richard Gregg  
 19-7111 Jack Glidewell  
 19-0113 Bob Tate  
 19-0118 Harold Hartly  
 35-7145 Herman Bourke  
 35-7153 C.E. & Maurice Butler  
 35-7165 Gordon Wilson  
 35-7173 Ferguson Feemster  
 35-7178 J.V. Trantham  
 91-0021 Double S Farms  
 91-0022 Dale Burton  
 91-0025 Curtis Burton  
 92-7004 Harry Bennett  
 93-7028 James Coats  
 93-7048 Clyde Carroll  
 93-7050 Rodney Smith  
 93-7051 Clem Amick

ASSOCIATION SUMMARIES

Averages for each association are listed below. These values are for the period of time from May 1, 1973 to April 30, 1974 for standard DHIA and DHIR records.

OFFICIAL RECORDS

	No. of Herds	Cow Years	Milk (Lb)	Fat (Lb)	Rate of Forage Feeding	Value of Prod.\$	Feed Cost \$	Income Over Feed Cost \$	Feed Cost Per cwt. Milk \$
2 Andrew-Buchanan- Nodaway	17	1017.3	12,234	454	2.3	892	422	470	3.45
4 Barry	17	999.4	13,104	467	2.4	930	489	441	3.73
12 Missouri Valley	7	689.5	12,622	484	2.1	894	411	483	3.26
14 Southeast	18	1223.6	12,181	457	2.1	900	524	376	4.30
16 Cass	19	1462.9	12,512	449	2.0	908	396	512	3.16
17 Tri-County	45	3053.3	11,548	417	2.3	807	389	418	3.37
19 Christian	20	906.4	12,304	494	2.5	879	511	368	4.15
22 Four County	6	337.6	14,249	540	2.1		480	479	3.37
23 Cole	16	976.7	12,012	438	2.4	828	406	422	3.38
27 Dallas	9	614.5	11,844	405	2.4	794	489	304	4.13
31 Douglas	20	982.8	12,916	478	2.2	920	494	426	3.82
33 Franklin	29	2167.8	13,065	497	2.2	920	465	455	3.56
34 Green Hills	8	430.6	9,422	350	2.5	579	332	247	3.52
36 Grand River	15	816.8	11,515	427	2.2	792	325	467	2.82
37 Harrison	3	126.1	11,753	411	1.9	769	358	411	3.05
42 Howell	5	262.3	12,458	456	2.2	873	356	517	2.86
44 Jasper Barton	19	1708.8	11,643	454	2.4	881	496	385	4.26
46 Johnson	20	1102.4	12,225	485	2.2	913	390	523	3.19
48 Laclede	11	720.8	11,662	405	2.5	816	470	346	4.03
49 Lafayette	18	1610.8	12,442	442	2.3	871	485	386	3.90
50 Lawrence	19	1433.2	11,719	438	2.2	822	414	408	3.53
58 Northeast	15	1059.6	10,837	457	2.1	834	351	483	3.24
64 Morgan	7	324.9	11,745	438	2.5	819	436	383	3.71
65 Newton-McDonald	2	221.9	15,261	558	2.2	38	502	464	3.29
68 Osage	5	310.8	13,167	490	2.4	924	470	454	3.57
70 Perry	21	1229.4	11,539	448	2.2	841	411	430	3.56
71 Pettis	16	894.2	12,946	477	2.0	910	392	518	3.03
72 Phelps	1	183.0	12,747	446	2.3	879	475	404	3.71
74 Platte	1	23.8	13,588	501	2.2	965	451	514	3.32
75 Polk	16	1022.4	13,755	494	2.3	958	502	456	3.65
81 St. Charles	1	65.5	10,049	544	2.4	843	461	382	4.59
83 St. Francois	5	355.0	10,403	399	2.2	747	323	424	3.10
89 Salt River	8	482.8	11,314	417	2.0	763	415	348	3.67
93 Texas	10	622.7	10,384	359	2.5	692	384	308	3.70
97 Webster	15	1114.4	11,177	417	2.5	782	389	393	3.48
98 Wright	24	1301.0	11,338	435	2.2	797	414	383	3.65
99 Southwest	40	2293.1	12,714	466	2.2	884	435	449	3.42

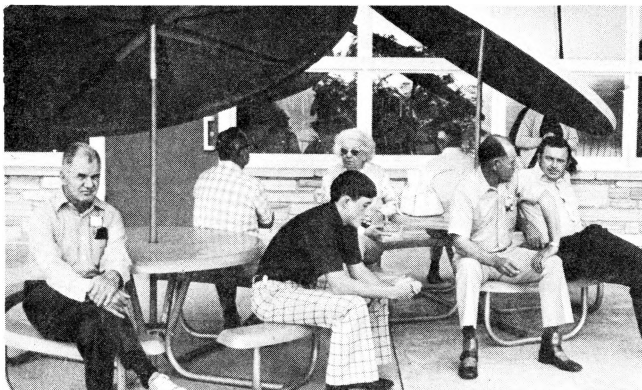




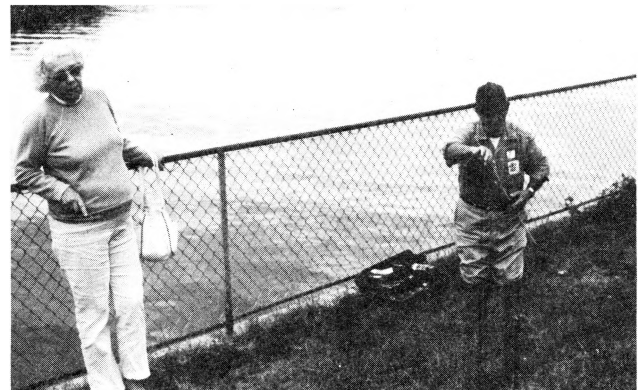
Pictured above are DHI Supervisors and University of Mo. staff attending the 1974 Annual Mo. DHI Supervisors Conference. The Conference was well attended in 1974 and is considered to be an important activity in maintaining highly trained supervisors in the Mo. DHI Federation program.



Meal time at the Mo. DHI Supervisors Conference offered an opportunity for discussing DHI problems and opportunities



"When will they ever open those doors to the chow hall - I'm hundry." Mo. DHI Annual Supervisors Conference

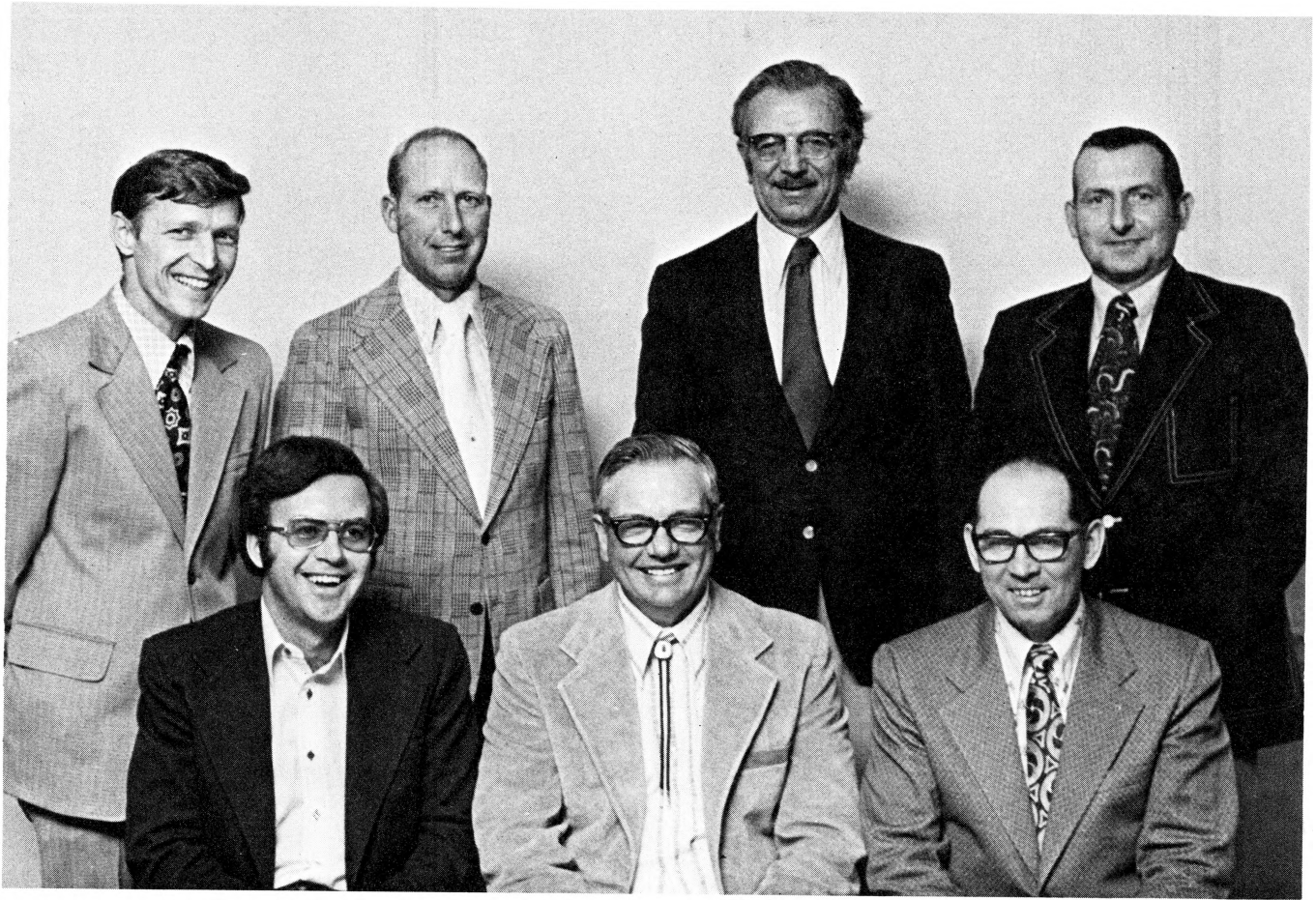


It wasn't all work at the Annual Mo. DHI Supervisors Conference as you can see. This is Mr. & Mrs. Chancy Housworth, DHI Supervisors for Pettis County,



We should have been here last week, they were really biting then!





Missouri Dairy Herd Improvement Federation Board of Directors  
(Left to right front row) Noel Boyd, (Joe King, retiring Director),  
Harlan Hunziker. Back row: Rex Ricketts, Marvin Sprick, Carl  
Schneider, Ed Steele. Not pictured are newly elected directors  
George Wright and Robert Gallivan.







Issued in furtherance of cooperative extension work, acts of May 8 and June 30, 1914, in cooperation with the United States Department of Agriculture. Carl N. Scheneman, Vice President for Extension, Cooperative Extension Service, University of Missouri, Columbia, Mo. 65201. The University of Missouri is an equal employment and educational opportunity institution.

University Libraries  
University of Missouri

### Digitization Information Page

Local identifier                      MP0426

#### Source information

Format                                      Book  
Content type                              Text / Text with images  
Source ID  
Notes

#### Capture information

Date captured                              10/16/23  
Scanner manufacturer                      Fujitsu  
Scanner model                              fi-7460  
Scanning system software                      ScandAll Pro v. 2.1.5 Premium  
Optical resolution                              600 dpi  
Color settings                              8 bit grayscale  
File types                                      tiff  
Notes

#### Derivatives - Access copy

Compression                              Tiff: LZW compression  
Editing software                              Adobe Photoshop  
Resolution                                      600 dpi  
Color    grayscale  
File types                                      tiff  
Notes    Images cropped, straightened, brightened...