

DECEMBER COMMENCEMENT

DECEMBER 18, 19 AND 20, 2015

UNIVERSITY OF MISSOURI
COLUMBIA

GRADUATE STUDIES COMMENCEMENT

SATURDAY, DECEMBER 19, 2015



ORDER OF EXERCISES

FANFARE	Columbia Community Band
WELCOME	Leona Rubin <i>Associate Vice Chancellor for Graduate Studies University of Missouri</i>
PROCESSIONAL	Platform Party, Faculty and Degree Candidates
THE NATIONAL ANTHEM	Columbia Community Band Julie McGinnity <i>Master of Music candidate University of Missouri</i>
PRESIDING.....	Leona Rubin
OPENING REMARKS.....	Leona Rubin
GREETINGS FROM THE CAMPUS AND CONGRATULATORY REMARKS.....	Hank Foley <i>Interim Chancellor University of Missouri</i>
ACKNOWLEDGEMENT OF GRADUATES (in order of appearance)	Hank Foley Garnett Stokes <i>Provost University of Missouri</i>
RECOGNITION OF DOCTORAL CANDIDATES AND HOODING CEREMONY	
RECOGNITION OF EDUCATIONAL SPECIALIST CANDIDATES	
RECOGNITION OF MASTER'S CANDIDATES	
DIPLOMAS (in order of appearance)	Leona Rubin Tracy Kitchel <i>Assistant Vice Provost for Graduate and Postdoctoral Affairs University of Missouri</i>
CONCLUDING REMARKS	Leona Rubin
ALMA MATER	Columbia Community Band Julie McGinnity
RECESSIONAL	Platform Party

FACULTY MARSHALS
GENERAL FACULTY MARSHAL

Jeremy Taylor

Curators' Professor of Genetics and Animal Sciences

HOODING FACULTY MARSHAL

Sheila Grant

Professor of Biological Engineering

STUDENT MARSHAL

Sarah Elizabeth Smith

Doctor of Philosophy candidate

Biological Engineering

READERS

Brian Houston

Associate Professor of Communication

Milbre Burch

Instructor, International Teaching Assistant Program

DECEMBER COMMENCEMENT

UNIVERSITY OF MISSOURI
COLUMBIA

TABLE OF CONTENTS

University Officials and Committee Members	2	Candidates for Professional Degrees	34
Mizzou Alumni: New Partners in the Enterprise	3	School of Law	
University of Missouri	3	Candidates for Baccalaureate Degrees	35
Schools and Colleges	4	College of Agriculture, Food & Natural Resources	
Academic Regalia	7	School of Natural Resources	
Honorary Degree Recipient	8	College of Arts & Science	
Hal Holbrook		Robert J. Trulaske, Sr. College of Business	
Paul Sturtz		College of Education	
David Wilson		College of Engineering	
Candidates for Graduate Degrees	11	College of Human Environmental Sciences	
Doctor of Philosophy		School of Social Work	
Doctor of Education		School of Health Professions	
Doctor of Nursing Practice		School of Journalism	
Doctor of Physical Therapy		Sinclair School of Nursing	
Educational Specialist			
Master of Accountancy		Reserve Officer Training Corps Commissions	48
Master of Arts		Alma Mater	49
Master of Business Administration			
Master of Education			
Master of Engineering			
Master of Fine Arts			
Master of Health Administration			
Master of Health Science			
Master of Laws			
Master of Music			
Master of Occupational Therapy			
Master of Public Affairs			
Master of Public Health			
Master of Science			
Master of Social Work			

BOARD OF CURATORS

Donald Cupps
Chair

Pamela Henrickson
Vice Chair

Maurice Graham
Tracey H. Mulderig
Student Representative
John R. Phillips
Phillip Snowden
Yvonne S. Sparks
David L. Steelman
David L. Steward

UNIVERSITY OF MISSOURI SYSTEM

Michael A. Middleton
Interim President

UNIVERSITY OF MISSOURI

Henry C. Foley
Interim Chancellor

Ken Dean
Senior Associate Provost

Ellen Eardley
Title IX Administrator
Assistant Vice Provost

Rhonda Gibler
Vice Chancellor
Finance and
Chief Financial Officer

Tom Henderson
Interim Vice Provost
Extension

Thomas Hiles
Vice Chancellor
University Advancement

Todd McCubbin
Executive Director
Mizzou Alumni Association

Mark McIntosh
Interim Vice Chancellor
Research and Graduate Studies

Jennifer Hollingshead
Interim Vice Chancellor
Marketing and Communications

Brian Millner
Special Assistant to the
Chancellor

Pat Morton
Director
Research Services

Mack Rhoades
Director of Athletics

Jatha Sadowski
Interim Associate Vice Chancellor
Human Resources

Catherine Scroggs
Vice Chancellor
Student Affairs

Garnett Stokes
Provost
Executive Vice Chancellor
Academic Affairs

Gary Ward
Vice Chancellor
Operations and
Chief Operating Officer

Christina Wells
Faculty Athletic Representative

COMMENCEMENT COMMITTEE

Christian Basi
Assistant Director, News Service
News Bureau

Leona Rubin
Associate Vice Chancellor for
Graduate Studies and Associate
Vice President for Academic
Affairs and Graduate Extension

Cathie Giles
Executive Assistant
Vice Provost Office —
Undergraduate Studies

Barbara Rupp
Interim Vice Provost
Enrollment Management

Todd McCubbin
Executive Director
Mizzou Alumni Association

John Murray
Senior Director
Auxiliary & Service Operations

Victor Price
Associate Registrar
Office of the University
Registrar-MU

Donna Puleo
Director
University Events

Brenda V. S. Selman
Chair and University
Registrar-MU
Office of the University
Registrar-MU

LeAnn Stroupe
Manager
Visitor Relations

Paula Thies
Assistant Registrar
Office of the University
Registrar-MU

MIZZOU ALUMNI: NEW PARTNERS IN THE ENTERPRISE

Congratulations and welcome to a lifelong relationship with your alma mater.

Graduates who have preceded you know the importance of the Mizzou experience. You will find that MU is well-regarded by executives of institutions everywhere and that you, as a graduate, will profit by the university's reputation.

To a great extent, the value of your degree depends on how well MU continues its mission of teaching,

research, service and economic development. Your goodwill and support are essential to secure its future and the success of students who follow you.

The university is more than its buildings, more than its faculty and more than the students present at any one time. The university consists of all who enter and leave its halls — who are affected by and carry on its pervading principles.

A university and its alumni are inseparable. Graduation day creates a stronger-than-ever bond of mutual interdependence. Your continued interest and concern — and your enthusiastic help beyond today — is important to Mizzou. You are your university.

UNIVERSITY OF MISSOURI

In the course of its history, the University of Missouri has committed itself to: *teaching* since its founding in 1839 as the first public university west of the Mississippi River; *research* as part of the land-grant mandate in the late 1800s; *extension services* since the early 1900s; and most recently *economic development*.

MU is one of only 35 public U.S. universities and the only public institution in the state to be selected for membership in the Association of American Universities. Membership, which recognizes excellence in teaching and research endeavors, includes only the nation's top-tier institutions.

The origin of the university can be traced to a clause in the federal Act of 1820, which admitted Missouri to the Union. The act authorized the sale of two tracts of public land with the proceeds earmarked "for the use of a seminary of learning." The land was sold in the 1830s, and sentiment mounted for the establishment of a university. By 1839 the fund amounted to about \$100,000, and the

General Assembly passed two acts that provided for the establishment and location of the University of Missouri. One act specified that the university be built in one of six central counties. The county that offered the greatest inducements in land and money would obtain the university. Boone County won the bid with \$117,921.25 in cash plus land, and in 1839 the University of Missouri was founded in the frontier town of Columbia.

Two momentous changes occurred in 1870. Under terms of the Morrill Act, the university was accorded land-grant status, prompting the legislature to authorize a School of Agriculture and Mechanical Arts for Columbia and to open a second campus to house the School of Mines and Metallurgy at Rolla.

MU has schools and colleges in accountancy; agriculture, food, and natural resources; arts and science; business; education; engineering; health professions; human environmental sciences; information science and learning technologies;

journalism; law; medicine; music; natural resources; nursing; public affairs; social work; and veterinary medicine.

Mizzou's breadth and depth enables both students and faculty to take an interdisciplinary approach to intellectual inquiry.

The university is a source of pride for all Missourians, setting the standard for higher education in the state and establishing a reputation for excellence known throughout the world.

SCHOOLS & COLLEGES

COLLEGE OF AGRICULTURE, FOOD & NATURAL RESOURCES

Includes School of Natural Resources

*Thomas L. Payne, PhD,
vice chancellor and dean*

The mission of the College of Agriculture, Food and Natural Resources includes quality teaching, cutting-edge research and the extension of that research to the people of Missouri.

From entering freshmen to postdoctoral scientists, students receive personal attention in preparing for a wide range of careers. Professional development through campus organizations and special interaction with business and industry prepares our graduates to have an impact in the food system, business, government policy, environmental awareness, law, medicine and other areas.

The Missouri Agricultural Experiment Station develops new technology in animal, biochemical, social, plant, food and natural resource sciences to keep the state's agribusiness system competitive in world markets and to provide consumers with a safe, low-cost food supply.

Technology reaches the people through the college's Missouri Agricultural Extension Program. State specialists within the college and area specialists in county centers interact with the public for real-life application of research in solving problems.

Finally, the college helps Third World countries become trading partners by developing their economies through improved agriculture. This also provides a valuable exchange of knowledge and understanding with students, teachers and scientists from many cultures.

COLLEGE OF ARTS & SCIENCE

Michael O'Brien, PhD, dean

The College of Arts and Science, established in 1841, is the oldest and largest academic division in the university, with more than 9,000 students, 29 departments and programs and 400 full-time faculty members.

The college provides a wide range of undergraduate and graduate degree

programs in the humanities, arts, and natural and social sciences.

The broad liberal arts education it offers serves as a solid foundation for professional or other specialized studies.

The departments of Art and Theatre, and the School of Music are within the college and contribute to the academic life of the campus as well as to the cultural life of the university and the community.

The college encourages excellence in teaching and scholarship among its faculty, seeks to provide traditional and innovative undergraduate curricula of the highest quality, and allows a flexibility in individual courses of study that enables its students to take the best possible advantage of the many resources at their disposal.

ROBERT J. TRULASKE, SR. COLLEGE OF BUSINESS

Stephen Ferris, PhD, interim dean

The Trulaske College of Business, established in 1914, educates students for professional opportunities and responsibilities in the private and public sectors. The college includes the School of Accountancy (the first established at a major public university) and the departments of Finance, Management and Marketing. The college offers an undergraduate degree in business, a combined bachelor's and master's degree program in accountancy, master's degrees in business administration, and doctoral degrees in accountancy and business.

Students in the college are exposed to relevant concepts, theories and techniques applied to real-world operations of private and public enterprises. With a commitment to professional development, the college arranges numerous opportunities for students to gain added practical insights through internships, field projects, guest speakers and executives-in-residence. Besides teaching students, the college's faculty members conduct and publish research on significant, timely issues and engage in wide-ranging service on campus, in their disciplines and in the business community.

In a variety of ways, the college provides information, research, continuing education and managerial assistance to practitioners and organizations throughout

Missouri and in other states. The college contributes to the economic development mission of the University of Missouri not only by preparing the next generation of executives, accounting professionals and business owners for the state but also by carrying out a number of programs related to entrepreneurship.

COLLEGE OF EDUCATION

Daniel Clay, PhD, dean

The College of Education is the oldest teacher-education program west of the Mississippi River. The college offers programs leading to a variety of career opportunities in the education profession as well as in education-related human-service occupations.

The bachelor of science in education degree leads to certification to teach at the early childhood, elementary, middle or secondary levels in Missouri as well as most other states. The bachelor of educational studies degree is designed for individuals interested in human-service careers.

In addition to the two undergraduate degrees, the College of Education offers graduate study leading to the master's, educational specialist and doctoral degrees. The college serves the education profession of the state through research studies, continuing education, and a variety of services to state and local education agencies.

COLLEGE OF ENGINEERING

Elizabeth G. Lobo, PhD, dean

When engineering classes at the University of Missouri began in 1849, a strong tradition was born that continues to grow. Today, the College of Engineering includes the first electrical engineering department established in the nation and the only industrial engineering program in Missouri. The college offers fully accredited degree programs in biological, chemical, civil, computer, electrical, industrial, information technology, mechanical and aerospace engineering, along with computer science. All programs offer undergraduate and graduate degrees, and the college also offers graduate degrees in nuclear engineering.

Naval science is under the academic administration of the college as well.

Excellence in teaching and scholarly pursuits is the hallmark of the College of Engineering. The college seeks to involve undergraduates in the exciting world of technological discovery, provide students with the highest quality curriculum, and prepare them to go out into the world with the education they'll need to make a difference.

OFFICE OF GRADUATE STUDIES

Mark McIntosh, PhD, interim vice chancellor for research and graduate studies and economic development

Leona Rubin, PhD, associate vice chancellor for graduate studies and associate vice president for academic affairs and graduate education

An atmosphere encouraging academic inquiry and stimulating intellectual activity at the University of Missouri has been recognized as fundamental to a superior education for graduate students.

The University of Missouri System is the only state-supported institution in Missouri to offer professional and doctoral degrees. Many of these degrees are available only on the Columbia campus. The Office of Graduate Studies provides administrative and academic support to students and programs from more than 90 departments and areas. Graduate Studies is a member of the Association of Graduate Schools and the Council of Graduate Schools. Of 3,800 degree-seeking graduate students, 44 percent are doctoral candidates.

The university granted its first master's degree in 1846. The first doctor of philosophy degree was granted in 1899.

SCHOOL OF HEALTH PROFESSIONS

Kristofer Hagglund, PhD, dean

Missouri's only state-supported school of health professions on a campus with an academic health center is uniquely positioned to educate highly qualified health care professionals committed to fulfilling our mission of improving health and quality of life through education, service, and discovery in health and rehabilitation sciences. The school's six departments and ten distinct programs

have a long and distinguished history and continue to produce many well-respected and nationally recognized professionals.

The departments of Clinical and Diagnostic Sciences, Communication Science and Disorders, Health Psychology, Health Sciences, Occupational Therapy and Physical Therapy fill critical roles in health care. The school offers undergraduate degrees in athletic training, clinical laboratory sciences, communication science and disorders, diagnostic medical ultrasound, nuclear medicine, radiography and respiratory therapy and graduate degrees in communication science and disorders, diagnostic medical ultrasound, occupational therapy and physical therapy.

Students gain valuable experience in the school's own service and outreach centers including MU Adult Day Connection, MU Speech and Hearing Clinic, Robert G. Combs Language Preschool, PhysZOU physical therapy clinic and TigerOT adult and pediatric occupational therapy clinics.

COLLEGE OF HUMAN ENVIRONMENTAL SCIENCES

Includes the School of Social Work

J. Sanford Rikoon, PhD, interim dean

Human Environmental Sciences at MU is a college with a mission: to maximize the quality of life and foster the development of individuals, families and other groups in their diverse environments. The college is ranked among the strongest human sciences units in the nation, reflecting the quality of faculty and students, and the relevance of programs.

Undergraduate and graduate programs are offered in the departments of architectural studies, human development and family studies, nutrition and exercise physiology, personal financial planning, textile and apparel management, and the School of Social Work. The College is unique among its peers in its comprehensive use of professional advisory boards, whose members are leaders in business, government, education and the social services. These experts provide guidance and support from their specialized fields to students and faculty and contribute powerful perspectives to vanguard curriculum development.

SCHOOL OF JOURNALISM

David D. Kurpius, PhD, dean

The university established the world's first School of Journalism in 1908 to strengthen the role of journalism in democratic societies.

The school's international reputation attracts students from nearly all states and more than 30 countries.

Students receive a broad liberal arts education as well as course work and practical training in the skills and responsibilities of journalism and strategic communication through daily performance under deadline pressure. They work under faculty supervision on *Adelante*, a bilingual publication dedicated to building a sense of community among the Spanish-speaking people of mid-Missouri; the *Columbia Missourian*, a daily community newspaper; KOMU-TV8, an NBC affiliate; KBLA, a public radio member-station; *Global Journalist*, a quarterly magazine for international journalists; *Missouri Digital News*, a compilation of news produced by students working in the State Government Reporting Program; *Vox*, a weekly tabloid city magazine. Students also support online versions of these media and serve clients through the development of communications plans and other advertising and public relations activities.

The school's objective is to develop within students an appreciation of the professional journalist's role — to provide society with a basis for understanding and mutual confidence upon which diverse people can find common principles and goals.

SCHOOL OF LAW

Gary Myers, JD, dean

Graduates of the School of Law, established in 1872, serve at the highest levels of local, state and national governments. Law school graduates and faculty members have written the majority of laws that regulate the lives of all Missourians. Faculty scholarship has affected legal change at the national, state and local levels. The School of Law is housed in the award-winning, state-of-the-art facility, John K. Hulston Hall. Approximately 85 percent of the school's

graduates practice law in Missouri.

The School of Law's faculty develop and refine in each student the basic traits that characterize the good and able lawyer: analytic ability, substantive legal orientation, basic working skills, familiarity with legal institutional context, awareness of nonlegal environments and ethical concern.

The School of Law is a national leader in alternative dispute resolution techniques and boasts the nationally recognized and reputed Center for the Study of Dispute Resolution.

SCHOOL OF MEDICINE

James P. Stannard, MD, interim dean

Established as the first public medical school west of the Mississippi River, the School of Medicine has offered a full, four-year education program since 1956. The school has a long tradition of educating students from rural Missouri, a focal point of the school's mission. The development of the Missouri Telemedicine Network and Mid-Missouri Area Health Education Center in recent years has strengthened MU's service to rural communities by giving students and rural health providers access to groundbreaking programs and technology. As the academic arm of the Health Sciences Center, the school's clinical faculty members provide primary and specialty care for patients from every county of Missouri through the University of Missouri Hospitals and Clinics.

With its innovative problem-based-learning curriculum, the school is emerging as a national model for medical education. Students gain early and frequent exposure to clinical cases that enhance their problem-solving skills and help them earn higher than average scores on national licensing examinations. *U.S. News & World Report* consistently ranks the school's family and community medicine department second in the country.

MU SINCLAIR SCHOOL OF NURSING

Judith Fitzgerald Miller, PhD, RN, FAAN, dean

The nursing program began in 1901 with the establishment of Parker Memorial Hospital Training School. Today, the Sinclair School of Nursing is committed to promoting, maintaining, and improving health and health-care delivery in Missouri and worldwide through nursing education, research and service. Nursing faculty combine research and education to offer students hands-on experience in the art and science of nursing.

The school offers a baccalaureate program that prepares students for the general practice of nursing; a master's degree program that prepares advanced-practice nurses for clinical specialist, nurse practitioner, administrator and educator roles; and a doctoral degree program that prepares nurse researchers/scholars for clinical, academic and policy roles.

The continuing education program serves practicing nurses throughout the state to update and increase nursing knowledge and skills. Nursing faculty offer many courses and programs via distance-learning technology.

HARRY S TRUMAN SCHOOL OF PUBLIC AFFAIRS

Barton Wechsler, PhD, dean

MU established the Harry S Truman School of Public Affairs in 2001 in honor of Missouri's only president. Dedicated to public affairs education, research and public service, the school has grown significantly since then with additional faculty, a redesigned master's degree in public administration, a new interdisciplinary doctoral program and an increase in research, service and outreach activities. In addition to its academic programs, the Truman school is home to the Institute of Public Policy, the Center for the Study of Organizational Change, the Rural Policy Research Institute, the Missouri P-20 Education Policy Research Center and other affiliated research centers.

The mission of the Truman school is to advance the study and practice of governance in Missouri, the nation and the world by conducting interdisciplinary research that informs and improves governance, public policy and public affairs. The school's academic programs prepare ethical leaders for public service and scholars for the next generation. The Truman school serves as a meeting place where policymakers, community members, researchers and students can engage in public policy issues. The school also facilitates public dialogue by convening community forums, roundtables, lectures and civic events.

COLLEGE OF VETERINARY MEDICINE

Neil Olson, DVM, PhD, BS, dean

Missouri's only College of Veterinary Medicine, established in 1946, has educated more than 2,600 veterinarians. They pursue careers in private practice, industry, government, education and the armed services. Sixty-four new students are enrolled annually in the vigorous four-year curriculum leading to the doctor of veterinary medicine degree.

After two years of fundamental classroom study, students begin rotating through hospitals, clinics and laboratories, where they receive hands-on training in diagnosis, prevention, treatment and control of diseases in animals.

The college is the state's only complete animal-health facility. Its education, research, patient-care, diagnostic and public information programs support the state's livestock industry, its companion-animal owners and its veterinary medical practitioners.

ACADEMIC REGALIA

Academic institutions throughout the world have created a variety of customs, including distinctive dress, color and ceremony to indicate the accomplishments of scholars. English traditions originating at Oxford and Cambridge led to the development of American academic regalia. By the 20th century, institutions of higher learning in the United States had adopted a well-defined code of academic costume, which now includes identification of the different academic degrees by distinctive gowns, hoods and colors.

For instance, the baccalaureate gown, generally worn closed, is identified by long, pleated front panels and long, pointed sleeves. The master's and doctoral gowns may be worn open or closed. The master's gown has long sleeves closed at the bottom, and wearers place their arms through an opening in the front of the sleeves. Doctoral gowns are distinguished by velvet panels around the neck and down the front of the gown. On the sleeves are three horizontal velvet bars in black or the colors representing the doctorate.

In the United States, the hood is the most colorful feature of academic regalia. The bachelor's hood, not usually worn, is 3-feet long with a 2-inch-wide velvet edging in a color representing the degree received. The master's hood is 6 inches longer with a 3-inch-wide velvet edging. The doctoral hood, at 4 feet, reaches far down the wearer's back, and is bordered by a 5-inch-wide strip of velvet. The hoods are black on the outside. The lining, which is folded out, bears the official colors of the institution granting the degree. The doctor of philosophy hood from MU has a dark-blue border, for philosophy, with a black-and-gold lining. The border colors represent the degree earned, not the academic major. The doctor of philosophy candidate in engineering, for instance, would wear the dark blue of philosophy on the hood instead of the orange of engineering.

The color of the master's hood, if worn by an MU master's candidate, may represent either the degree earned, such as white for the master of arts or gold yellow for the master of science, or the candidates' academic discipline.

Traditionally, candidates at MU choose the color of their hood based on the discipline. A master of science candidate in nursing, for example, would normally wear the apricot of nursing instead of the gold yellow for the master of science degree.

Because most MU faculty members did their graduate work at institutions other than MU, there is a variety of academic attire in today's procession. Some degree holders wear no hood because their

academic robe symbolizes the degree awarded, as with the scarlet gown of Oxford University. The official robes worn by members of the University of Missouri System Board of Curators are gold.

The standard cap is the mortarboard, always black. It is the custom at MU for the color of the tassels to indicate undergraduate students' academic majors. Doctoral degree candidates wear gold tassels; master's candidates wear black.

Color of trimmings on doctoral gowns and hoods

Doctor of Education – light blue
Doctor of Philosophy – dark blue
Doctor of Letters – white
Doctor of Fine Arts – brown
Doctor of Science – yellow gold
Doctor of Laws – purple
Doctor of Music – pink
Doctor of Medicine – green
Doctor of Nursing – apricot
Doctor of Veterinary Medicine – gray
Doctor of Humane Letters – white
Doctor of Physical Therapy – teal

Color of trimmings on master's hoods and tassels on baccalaureate caps

College of Agriculture, Food and Natural Resources – maize
 School of Natural Resources – russet
 Parks, Recreation and Tourism – rose
College of Arts and Science – white
 Fine Arts – brown
 Music – pink
Robert J. Trulaske Sr. College of Business – drab
College of Education – light blue
 Library and Informational Science – white
College of Engineering – orange
Office of Graduate Studies
 Master of Public Health – salmon pink
Harry S. Truman School of Public Affairs – peacock blue
School of Health Professions – green and gold
 Bachelor of Health Studies (CSD and DMU) – sage
 Master of Occupational Therapy – ink
 Masters – sage green
College of Human Environmental Sciences – maroon
 School of Social Work – citron
School of Journalism – red
School of Law – purple
School of Medicine – green
 Master of Public Health – salmon pink
School of Nursing – apricot
College of Veterinary Medicine – gray

HONORARY DEGREE RECIPIENT

Each year the university recognizes prominent individuals, whether they have attended the university or not, by presenting them with honorary degrees.

This year's honorees join the ranks of 398 people awarded honorary degrees from MU since 1892. Past honorees include Presidents Harry Truman and

Herbert Hoover; Gens. John Pershing, Omar Bradley and Maxwell Taylor; artist Thomas Hart Benton; author Samuel Clemens (Mark Twain); newsman Walter Cronkite; Sens. Thomas Eagleton, Stuart Symington and James Fulbright; Missouri Govs. Warren Hearnes, Phil Donnelly, Henry Caulfield, John Dalton and Forrest

Donnell; poet Marianne Moore; singer Sheryl Crow; entrepreneur J.C. Penney; author and journalist Carl Rowan; psychologist B.F. Skinner; journalist Helen Thomas; Walmart founder Sam Walton; and U.S. Reps. Andrew Young, Clarence Cannon and Martha Wright Griffiths.

HAL HOLBROOK

Actor Hal Holbrook is famously known for his one-man show "Mark Twain Tonight!," which has been featured on primetime television and presented at theaters across the nation since 1954.

Holbrook, a graduate of Culver Academies and Dennison University, found his passion for native Missourian and American literary giant Mark Twain while working on an honors project in his final year of study. His first show was performed at Lock Haven State Teachers College in Pennsylvania in 1954, where he was discovered by Ed Sullivan.

After appearing on the "Ed Sullivan Show," Holbrook was nominated for an Emmy Award for his performances on television in 1967.

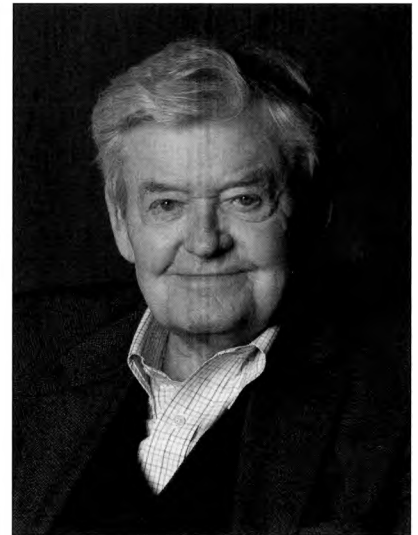
Holbrook's career wasn't limited to television, as he performed "Mark Twain Tonight!" on Broadway in 1966 and again in 1977 and 2005. After his first appearance on Broadway, he received a Tony award and he performed the one-man show more than 2,000 times in different locations across the United States, including at Mizzou's Jesse Auditorium.

In addition to being a successful stage and television actor, Holbrook has appeared in more than 120 television shows and movies, including "Men of Honor," "Wall Street," "All the President's Men," "Into the Wild" and "The Fog." Holbrook also appeared in Steven Spielberg's film "Lincoln."

Holbrook's talents haven't gone unnoticed, as he has been nominated for an Academy Award and a Screen Actor's Guild Award for his performance as a supporting actor in "Into the Wild."

Holbrook also has been nominated for seven Emmy Awards and won five: two for Outstanding Lead Actor in a Miniseries or Movie for "Pueblo" in 1974 and "Sandburg's Lincoln" in 1976; one for Outstanding Lead Actor in a Drama Series for "The Bold Ones: The Senator" in 1971; one for Outstanding Performance in Informational Programming for "Portrait of America (Alaska Segment)" in 1989; and one for Actor of the Year for "Pueblo" in 1974.

Holbrook has three children, Victoria, David and Eve.



Hal Holbrook

PAUL STURTZ

Celebrated entrepreneur, mentor and community leader Paul Sturtz is best known for co-founding the Ragtag Cinema and the True/False Film Fest. Sturtz's efforts have inspired film professionals and artists in the world of documentary film and have energized, entertained and educated a city.

Sturtz graduated from the University of Oregon in 1989 with a degree in journalism. After working as a reporter, Sturtz became the communications director for the Missouri Rural Crisis Center, a statewide family-farm organization with a mission to preserve family farms.

In 1998, Sturtz became the business writer for the Columbia Tribune and later was hired as a city editor at the Columbia Missourian from 1999 to 2001. Sturtz also co-founded the Ragtag Film Society with David Wilson in 1998 and has worked as the head programmer at Ragtag Cinema since May 2000. Under the leadership of Sturtz and Wilson, the theater was selected as one of the 14 outstanding arthouse cinemas by the Sundance Institute in 2006.

Sturtz and Wilson co-founded the True/False Film Fest in 2004, and Sturtz has served as its co-director and curator since then. The documentary festival has given Columbia and the University of Missouri a recognizable presence and an outstanding reputation in the world of documentary film.

Strategically positioned a month after the Sundance Film Festival, the True/False Film Fest has become the natural

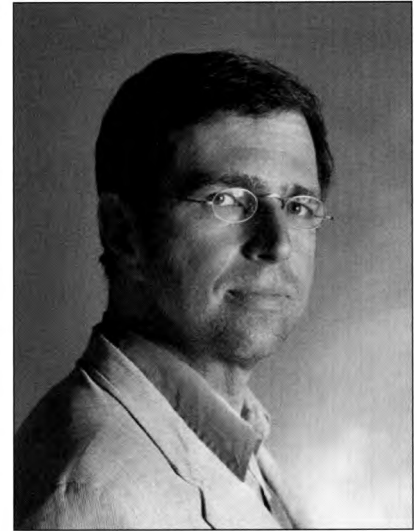
next stop and one of the world's leading documentary festivals. The rapid rise of the True/False Film Fest is due to Sturtz and Wilson's ability and dedication to bringing acclaimed and undiscovered films to the festival.

In light of True/False's popularity, Wilson and Sturtz established the True Life Fund in 2007. The fund provides financial support to documentary subjects. In its first year, the fund raised \$8,500 to purchase school supplies for the South African Children's Choir featured in the documentary "We Are Together." Since it started, the fund has awarded more than \$200,000.

Sturtz has worked as an associate programmer for the Sundance Film Festival and has served on film juries around the world. He currently programs films for the Ragtag Cinema in Columbia, the Moxie Cinema in Springfield, the Capitol City Cinema in Jefferson City and the Lyric Cinema in Fort Collins, Colorado.

In 2012, to coincide with the 10th anniversary of the festival, Sturtz co-directed his first film, "Dear Valued Guests," about the late, and sometimes lamented, Regency Hotel.

In 2013, Sturtz was selected along with Wilson as one of 40 people or companies on the inaugural Indiewire Influencers List, on which they were described as "visionaries that are changing the course of film." Recently, Sturtz was named creative director of Wind-Up Fest, a nonfiction festival in Williamstown, Massachusetts.



Paul Sturtz

DAVID WILSON

Celebrated director, producer and impresario David Wilson is best known for co-founding the Ragtag Cinema and the True/False Film Fest. Wilson's efforts have provided Columbia and the University of Missouri with a recognizable presence and an outstanding reputation in the world of documentary film.

Wilson is the son of Willy Wilson, a staple of Columbia's theater and arts scene, and former state representative Vicky Riback Wilson. David Wilson grew up in Columbia and attended Rock Bridge High School before studying filmmaking at Hampshire College in Amherst, Massachusetts. He graduated in 1996 with his thesis film "Kansas Anymore," a fiction film about a band struggling to make it home.

In 1997, Wilson met Paul Sturtz at a concert in Columbia. Sturtz approached Wilson about starting a film series, and the Ragtag Film Series began. After five film seasons, the Ragtag Cinema, Columbia's first successful arthouse theater, was built in May 2000.

Wilson returned to filmmaking, producing "Magic City" in 2000, a short documentary that illustrates the evolution of youth culture in the small community of Moberly, Missouri.

In 2003, he relocated to Washington, D.C., to co-create an experimental opera, "The Nitrate Hymnal," with Bob Massey. The multimedia work featured a hybrid orchestra of both punk and classically trained musicians and told the story of a grandson and grandmother attempting to connect via home movies.

In 2004, Wilson returned to Columbia once more to launch the True/False Film Fest with Sturtz. Uniting the

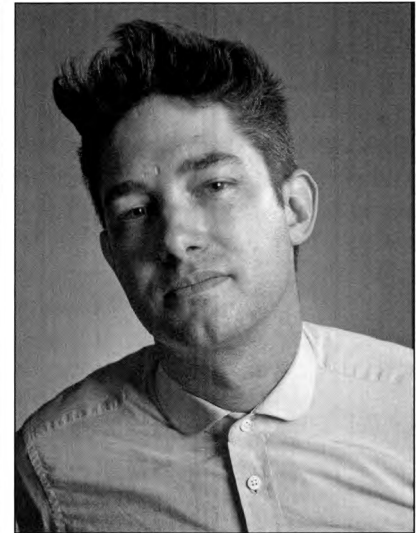
Missouri Theatre, The Blue Note and Ragtag Cinema, True/False temporarily transformed downtown Columbia, capturing a crowd of 4,400 people in its first year. By 2015, ticket sales surpassed 45,000.

Strategically positioned a month after the Sundance Film Festival, the True/False Film Fest has become a natural next stop and one of the world's leading festivals for nonfiction film. The rapid rise of True/False is due to Wilson and Sturtz's commitment to scouting the globe to secure already acclaimed films and discover new ones for the fest.

As True/False grew, Wilson and Sturtz established the True Life Fund in 2007. The fund provides financial support to documentary subjects. In its first year, the fund raised \$8,500 to purchase school supplies for the South African Children's Choir featured in the documentary "We Are Together." Since it started, the fund has awarded close to \$200,000.

In 2010, while continuing to work with True/False, Wilson produced "Big Birding Day," a short film about competitive bird watching. The film premiered at South by Southwest, a prestigious festival in Austin, Texas. That year, Wilson also was named one of Filmmaker Magazine's "25 New Faces of Independent Film."

In 2014, Wilson's first feature-length documentary, "We Always Lie to Strangers," was released. The documentary, based on the entertainment industry of Branson, was directed by Wilson and MU alumnus AJ Schnack. It also premiered at South by Southwest and received a special jury prize for directing. Recently, Wilson was selected along with Sturtz as one of 40 people or companies in the inaugural Indiewire Influencers List, described as "visionaries that are changing the course of film."



David Wilson

CANDIDATES FOR GRADUATE DEGREES

DOCTOR OF PHILOSOPHY

^ADenotes Summer 2015 graduate

^{AA}Denotes Spring 2015 graduate

Jorge Fernando Abad Moran

Industrial Engineering

Professor Bin Wu

An Investigation into the Effectiveness of Industrial Application of CHP (Combined Heat and Power)

Ali Abu Al Hummos

Informatics

Professor Satish Nair

Different Hippocampal circuit during learning and during recall

Ahmed Abu El-Ela

Civil Engineering

Professor John Bowders Jr.

Reliability-Based Design (RBD) of Shallow Foundations on Rock Masses

Nazia Afrin

Mechanical and Aerospace Engineering

Professor Yuwen Zhang

Professor Jimn-Kuen

High Energy Laser Interaction with Metals

Mohamed Ali Abraham Alalem

Genetics Area Program

Professor Bimal Ray

Role of mTOR in SAF-1-mediated VEGF expression in breast cancer

Md Alamun^A

Pathobiology Area Program

Professor Kristen Taylor

Global DNA methylation and gene expression analysis in pre-B cell acute lymphoblastic leukemia

Jacqueline Celeste Almquist

Communication

Professor Rebecca Meisenbach

A Grounded Theory Approach: Inter-organizational Relationships in Community College

Falih Alnahwi^A

Electrical and Computer Engineering

Professor Naz Islam

High Performance Ultra Wide Band Patch Antenna Design with Minimized Optimization Parameters

Rhonda Renee Archie

Informatics

Professor Lanis Hicks

Four-Factor Information Technology Interconnectivity (FFITT) Model in a Rural Health Setting

Constance Bailey^A

English

Professor Anand Prabhad

It Takes a Village: Twentieth Century

Black Women's Fiction and the Spiritual Apprenticeship Narrative

Alison Balaskovits

Anthropology

Professor Todd VanPool

Russian Old Believers in Alaska:

Linguistic and Cultural Continuity of Traditionalist Refugees

April Renee Bass

English

Professor Trudy Lewis

Magic for Unlucky Girls: Stories

Emily Ann Baxter

Electrical and Computer Engineering

Professor Scott Kovaleski

Piezoelectric transformer plasma ion source characterization for neutron production

Ryan O'Dell Begley

Anthropology

Professor Mary Shenk

The Birth and Adoption of Kinship:

Folklore and Fakelore in the Context of Nation-States and World Religions

Elizabeth Benavides^A

Animal Science

Professor Duane Keisler

Development of a novel immunoassay for simultaneous quantification of endocrine parameters

Tetyana Beregovska

Economics

Professor Shawn Ni

Growth and Industrial Structure

Manu Bhandari^A

Journalism

Professor Shelly Rodgers

Countering the Detrimental

Influence of Negative Electronic Word of Mouth on Brands: Effects of Brand Feedback, Stability and Controllability of the Cause of the Problem on Brand Attitudes and Purchase Intentions

Matthew Boulanger^A

Anthropology

Professor Michael O'Brien

Phylogenetic and Morphometric

Analyses of Eastern Fluted-Point Forms

Thomas W Brossard

Chemistry

Professor J. David Robertson

Cyclotron Production of PET Nuclides

for Radiotracer Studies

Mia Brown^A

Chemistry

Professor Jason Cooley

Monitoring Membrane Protein

Structural Changes and

Interactions Via Deep UV

Resonance Raman Spectroscopy

Matthew Scott Brubaker

Psychology

Professor Moshe Naveh-Benjamin

The effects of stereotype threat on the

associative memory deficit of older adults

Jewelwayne Cain

Agricultural and Applied Economics

Professor Joe Parcell

Economic Value of Innovation and

Quality within the Soybean

Supply Chain

Dat Cao^A

Mathematics

Professor Igor Verbitsky

Quasilinear elliptic equations with

sub-natural growth and nonlinear potentials

Hongfei Cao^A

Computer Science

Professor Chi-Ren Shyu

High-Throughput Visual Knowledge

Analysis and Retrieval in Big

Data Ecosystems

Lukas Michael Carter

Chemistry

Professor J. David Robertson

ICP-MS Analysis of Fission Product

Diffusion in Graphite for High

Temperature Gas Cooled Reactors

Michael Catalano

Chemistry

Professor Kent Gates

Applications of Small Molecule

Analogs in the Evaluation of

Structure, Formation, and

Stability of AP-Site-Derived

Interstrand DNA Crosslinks

Erin Marie Cattoor

Nursing

Professor Marilyn Rantz

The Effectiveness of CARES

Dementia Training Modules

on Delivery of Person Centered

Care Inside a Memory Care

Unit: Utilizing the CARES

Observational Tool

Tilanka Rukmal Chandrasekera

Human Environmental Sciences

Professor So-Yeon Yoon

Creative Design Problem Solving

using Augmented and Virtual

Reality Tools: The Interplay among

tangibility in interfaces, learning

styles, and the design process

Hsiu-Hui Chen^A

Educational and Counseling Psychology

Professor Joseph Johnston

Exploring the Stringtbs Development

of Taiwanese International

Students During the Cultural

Transition Process: A Grounded

Theory Study

Shanjie Chen

Electrical and Computer Engineering

Professor Dominic K. C. Ho

Efficient localization method for a

point source and rigid body

Shanyan Chen

Neuroscience

Professor Zezong Gu

Innovative Detection and

Mechanism-based Inhibition

of Matrix Metalloproteinase-9

Provides Neuroprotectoin in a

Mouse Model of Focal Cerebral

Ischemia

Yuan Cheng

Statistics

Professor Marco Ferreira

Professor Paul L.

Bayesian model selection using

nonlocal priors, and applications to

fMRI and genomics

Stephanie Lynn Child

Anthropology

Professor Libby Cowgill

Professor Daniel

Femoral angles and cross-sectional

geometry across subsistence

economies

Continued on next page.

Kuo-Hsuan Chin^Δ

Economics
Professor Shawn Ni
*Essays on Inflation Dynamics,
Economic Fluctuations and Fiscal
Policy*

Rezvan Chitsazi

Chemistry
Professor Donad L. Thompson
*Pressure effects studies of OH
relaxation in an Ar bath.*

Lynn Chiu

Philosophy
Professor André Ariew
*Niche Construction and the Logic of
Natural Selection Explanations*

You Jung Choi

Psychology
Professor Yuyan Luo
*Infants' False-Belief Understanding
in Social Interactions*

Stephen Christ^Δ

Sociology
Professor Jay Gubrium
*The Social Organization of
Authenticity in Mexican
Restaurants*

Jayne Nichole Cisco

Anthropology
Professor Mary Shenk
*Support for Breastfeeding Mothers
and Determinants of Long-term
Breastfeeding in the United
States*

Jonathan Cisco^Δ

Learning Teaching and Curriculum
Professor Amy Lannin
*You Are Not an Impostor: Mediating
Impostor Phenomenon Feelings
in Graduate Students Through
Literacy Interventions*

Kerry Maureen Clark

*Soil, Environmental and Atmospheric
Sciences*
Professor Randall Miles
Professor Robert
*Soil Quality Response to Organic
No-Till*

Martina Clarke^Δ

Informatics
Professor Min Kim
*Determining the Impact of Usability
Issues of Primary Care Physicians
by Expertise When Using an
Electronic Health Record*

Eric Allan Coate

Pathobiology Area Program
Professor Deborah Anderson
*Regulation of Cell Death by Yersinia
pestis and its Role in the
Progression of Plague*

Courtney Victoria Coleman

Plant, Insect and Microbial Sciences
Professor Walter Gassmann
Professor Laszlo
*Positional Cloning and Functional
Analysis of REN1 in Vitis
vinifera*

Carina Ann Collins

Biochemistry
Professor Antje Heese
Professor Scott
*Navigating the Cellular Seas:
Investigating the Various Roles of
Vesicular Trafficking Proteins in
Plant Innate Immunity*

Matthew Cook^Δ

Biomedical Sciences
Professor Salman Hyder
*Therapeutic and Chemopreventive
Potential of Luteolin Against
Growth and Metastasis of Breast
Cancer*

Shane Patrick Corlman

Mechanical and Aerospace Engineering
Professor A. Sherif El-Gizawy

Katie Crandall

*Soil, Environmental and Atmospheric
Sciences*
Professor Patrick Market
Severe Winter Storms in Missouri

Robert Darby

Art History and Archaeology
Professor Marcus Rautman
*Bathing on the Edge of Empire: Local
Influence and Adaptation in the
Late Roman Military Bathhouses
of Arabia/Palaestina from the late
2nd – early 5th c. CE*

Rebecca Darrough^Δ

Learning Teaching and Curriculum
Professor Barbara Reys
*Acquisition, Utilization, and
Retention of Foundational
Fraction Concepts by Middle
Grade Students*

Chad Denton^Δ

History
Professor Linda Reeder
*The Enlightened and Depraved:
Radicalism, Decadence, and the
Early Modern French Nobility*

Jennifer Dine

Nursing
Professor Jane Armer
*Characterization of a Novel
Regulator and Predictors of
Sensitivity to TRAIL-Induced
Apoptosis in Breast Cancer Cells*

Amanda Drachnik^Δ

Chemistry
Professor Jerry Atwood
Professor Carol
*A Two-Fold Approach Towards
Understanding Properties of
Two Self-Assembled Macrocycles:
Resorcin[4]Arene and
Pyrogallol[4]Arene*

Jennifer Ann Dube

Political Science
Professor L. Marvin Overby
Professor John
*Waging Campaigns on Television:
Optimizing Target Audience
Exposure in the Modern Political
Campaign*

Tonya Lynn Eddy

Nursing
Professor Tina Bloom
*Maternal Psychosocial Factors
associated with Duration and
Exclusivity of Breastfeeding among
Rural Women in the United States*

Natalie Dean Ellis

Human Environmental Sciences
Professor Ronald Phillips
*A Descriptive Study for Workplace
Patterns: Environmental Preference
Index Examined Through
Organizational System Preference*

Somayeh Emamian^Δ

Chemistry
Professor Carol Deakyne
*Computational Studies of Five
Macromolecular Systems*

Reza Espanani

Biological Engineering
Professor William Jacoby
*Investigation of Supercritical Water
Process of Biomass for Energy
Production: Study of Downstream
and High Pressure Separation*

Catherine Giovanna Espinoza

Plant, Insect and Microbial Sciences
Professor Gary Stacey
*Crosstalk between chitin-triggered
innate immunity and salt stress in
Arabidopsis*

Kathryn Eva Fishman-Weaver

*Educational Leadership and Policy
Analysis*
Professor Emily Crawford
Professor Jeni Hart
*A Feminist Framework for Wholehearted
Affective Education: Cultivating
Courage in the College Transition*

Chris Fox^Δ

*Educational Leadership and Policy
Analysis*
Professor Joe Donaldson
*Predicting Success in the First Year of
Residency Training*

Devin Frank^Δ

Philosophy
Professor Matthew McGrath
*The Metaphysics of Content:
Towards a Minimalist Account of
Propositions*

Clarence Charles Franklin IV

Electrical and Computer Engineering
Professor Satish Nair
*Computational Modeling in
Neuroscience - Three Case Studies*

Nicky Frye

Human Environmental Sciences
Professor Marilyn Coleman
*Marital conflict and wellbeing:
The moderating role of spousal
emotion regulation*

Chu-Chun Fu^Δ

Educational and Counseling Psychology
Professor Kenneth Wang
*Influences of Subjective Social Status,
Control, and Perfectionism on
International Students' Cross-
Cultural Transition*

Mayo Fujiki^Δ

Educational and Counseling Psychology
Professor Wendy Reinke
*Teacher burnout in Japan:
Relationships with individual
teacher and classroom level factors*

Xiaolong Gao

Biological Engineering
Professor Tzyh-Chang Hwang
*Molecular understanding of CFTR's
pore*

Rima Ghoreishi

Chemical Engineering
Professor Galen Suppes
*Role of Simulation in Polyurethane
Reaction Systems*

Douglas Howard Gilliam Jr.

Genetics Area Program
Professor Gary Johnson
*Molecular Genetic Studies of Canine
Inherited Diseases Including Sams,
Neuronal Ceroid Lipofuscinosis
and Dilated Cardiomyopathy*

Daniel Stewart Godwin

Biomedical Sciences
Professor Ricardo Holdo
*The Nested Spatial Dimensions of
Savanna Fire Ecology in Kruger
National Park*

Stephanie DuPont Golda

Anthropology
Professor R. Lee Lyman
Professor Daniel J.
*Intrinsic Properties of Bone as
Predictors of Differential
Survivorship*

Continued on next page.

Scott Gossett

Romance Languages
 Professor Carol Lazzaro-Weis
l'Écorce grossière, l'âme aristocrate: Literary Representations of Cajuns in Francophone Louisiana, Nineteenth Century to Present

Jessica Gordon^Δ

Agricultural Education
 Professor Anna Ball
Exploring Undergraduate Agricultural Paradigms and their Influence on Epistemological Development

Matthew Gott^Δ

Chemistry
 Professor Silvia Jurisson
Accelerator-Based Production of High Specific Activity Radionuclides for Radiopharmaceutical Applications

Kevin Kale Grantham

Nuclear Engineering
 Professor Tuskar Ghosh
 Professor Eric
The Effect of Uncertainty in "Field of the Day" Treatment Regimes in Proton Therapy

Ian Leland Graves

Computer Science
 Professor William Harrison
Device-Level Composition in ReWire

Muhammad Lutful Hai

Electrical and Computer Engineering
 Professor Mahmoud Almasri
Analysis of Amorphous Silicon Germanium Oxide (Si_xGe_y)O₂ Based Infrared Thermal Sensor and Its Applications for Uncooled Microbolometer

Marc Halusic^Δ

Psychology
 Professor Kennon Sheldon
Developing a computer coding scheme for the implicit achievement motive

Kyung Jung Han

Journalism
 Professor Glen Cameron
Strategies for Tailored Messages: Interaction of Personal Value Orientation and Freedom Threat for Chronic Diseases Management and Behavior Changes

Paul Francis Harden

Nuclear Engineering
 Professor Sudarshan Loyalka
Diffusion coefficients of high temperature salts

Erin Harmeyer^Δ

Human Environmental Sciences
 Professor Jean Ispa
Longitudinal Links Between Maternal Parenting Behaviors in Early Childhood and Academic Outcomes and Mother-Child Relationship Quality in Middle Childhood

Philomina Harshaw

Educational Leadership and Policy Analysis
 Professor Ty-Ron M. Douglas
 Professor Jaunita M. Simmons
The Impact of Leadership on the Collaboration of Adults in the Transformation of School Culture from Punitive to Positive.

John Hegarty II^Δ

Neuroscience
 Professor David Beversdorf
Network Coherence in Autism Spectrum Disorder: A Multimodal Neuroimaging Study of Functional Connectivity and Spectroscopy MRI

Kristin Renee Henze

History
 Professor Carol Anderson
Mississippi Mau Mau: Medgar Evers and the Black Freedom Movement, 1952-1963

Seth Holwerda

Medical Pharmacology and Physiology
 Professor Paul Fadel
Hyperglycemia and Type 2 Diabetes: Impact on Neural Cardiovascular Control

Kwangseok Hong

Medical Pharmacology and Physiology
 Professor Michael Hill
AT1R Mechanoactivation-Mediated Myogenic Response and Its Regulation of RGS5 Protein as a Negative Feedback Regulator

A K M Hussain^Δ

Civil Engineering
 Professor Baolin Deng
 Professor Maria
Application of advanced adsorption processes for dissolved organic matter and heavy metal removal from water sources

Ji Yeong I^Δ

Learning Teaching and Curriculum
 Professor Barbara Dougherty
Preservice Teacher Learning for Supporting English Language Learners to Make Sense of Mathematics

Pornsuree Jamsri^Δ

Information Science and Learning Technologies
 Professor Jenny Bossaller
The Integrating of Teaching and Learning Through Technology in High School: Learning Management Systems (LMS) and Alternatives

Kimberly Jasmer^Δ

Biological Sciences
 Professor Stephen Alexander
 Professor Mark
The Role of Heme Oxygenase in Metastatic Melanoma Tumorigenicity

Zongrun Jiang

Chemistry
 Professor Silvia Jurisson
 Professor Charles
Radiolabeled Bivalent Peptide Ligands for Prostate Cancer Imaging

Jian Jiao

Electrical and Computer Engineering
 Professor Jae Kwon
Liquid dielectrophoresis for micro gas pumping applications

Bunjirtluk Jintaridth

Soil, Environmental and Atmospheric Sciences
 Professor Peter Motavalli
 Professor Keith

Howard Johns^Δ

Psychology
 Professor Matt Will
Examination of μ -Opioid Receptor Activation in the Nucleus Accumbens on Baseline Diet Preferences in Rats Selectively Bred to Run Long or Short Distances

Gabriella Johnson^Δ

Psychology
 Professor Steve Hackley
Affective Modulation of Post-Auricular Reflexes to Serial Probes: A Test of the Nursing Hypothesis

Ajit Joshi

Geology
 Professor Martin Appold
Numerical Modeling of Porosity Waves as a Mechanism for a Rapid Fluid Transport in Elastic Porous Media

Ae Kyung Jung^Δ

Educational and Counseling Psychology
 Professor Mary Heppner
Development and Validation of a Work Mattering Scale (WMS)

Vamsi Krishna Kanuri^Δ

Business Administration
 Professor Murali Mantrala
Optimizing a menu of multi-format subscription plans for advertising supported media platforms: A model and application in the daily newspaper industry

Monica Kearney^Δ

Exercise Physiology
 Professor Christopher Hardin
 Professor John
Short-Term Aerobic Exercise Training in Type 2 Diabetes

Marcia Auxiliadora Kearns

Psychology
 Professor Kristin Hawley
 Professor Nicole
The Relationship Among Insight, Action, and Treatment Outcomes for Youths in Usual Care

Ramsey Elliott Kellner

Natural Resources
 Professor Jason Hubbard
Agricultural and Forest Land Use Impacts on Subsurface Hydrological Parameters

John Charles Kennedy

Mechanical and Aerospace Engineering
 Professor Gary Solbrekken
Development and Experimental Benchmarking of Numeric Fluid Structure Interaction Models for Research Reactor Fuel Analysis

Sarah Kenyon

Plant, Insect and Microbial Sciences
 Professor Craig Roberts
Managing Fescue Toxicosis Through Limestone Application, Controlling Canopy Height, and Grazing Novel Tall Fescue Varieties

Eunjin Kim^Δ

Journalism
 Professor Esther Thorson
 Professor Ratti
The Why and How of Narrative Advertising: An Integrated Processing Framework

Yong Jae Kim^Δ

Political Science
 Professor John Petrocik
 Professor Laron
The Origins and Changes of East Asian Party Systems and Voter Alignments: Social Conditions, Issue Effects, and Party Coalitions

Continued on next page.

<p>Ruth Knezevich English Professor Noab Heringman Professor Devoney Looser <i>Narrative as Archive: Ethnographic Paratexts in British Literature, 1760-1830</i></p> <p>Garima Kushwaha Informatics Professor Dong Xu <i>Leveraging high-throughput genomics data in cancer studies.</i></p> <p>Erik Ladomersky^Δ Biochemistry Professor Michael Petris <i>The Role of Copper in Defending Against Bacterial Infection</i></p> <p>Patrick Phillip Lane English Professor Trudy Lewis <i>Medieval Death Trip</i></p> <p>Franklin James Lasik Theatre Professor Cheryl Black <i>Performing Femininities in a Changing Cultural Climate: Tricie Friganza on Stage and Screen</i></p> <p>Tracey Latimore^Δ Educational and Counseling Psychology Professor Wendy Reinke <i>Evaluation of the Pass System: A multi-component function-based tier 2 intervention for escape-maintained student behaviors</i></p> <p>Jaymi LeBrun^Δ Natural Resources Professor Joshua Millsbaugh Professor Frank <i>A Landscape-Scale Assessment of the Response of Birds to Land Cover, Climate and Forest Management</i></p> <p>Hyun Ji Lee^Δ Communication Professor Melissa Click <i>Between Cultural Diversity and Fantasy: Hybridity, Pop Cosmopolitanism and Transnational Media Fandom</i></p> <p>Shan Lei^Δ Human Environmental Sciences Professor Rui Yao <i>Financial Planning and Household Portfolio Performance: Evidence from the 1998-2013 Survey of Consumer Finances</i></p> <p>Wei Lei^Δ Animal Science Professor Kevin Fritsche <i>Modulation of Inflammatory Responses by <i>Sutherlandia Frutescens</i></i></p>	<p>Nicolle Lewis^Δ Educational and Counseling Psychology Professor Alex Waigandt Professor Richard McGuire <i>Exploration of the Contentious Relationship Between Increased Work Engagement and Service Worker Well-Being</i></p> <p>Xue Li^Δ Economics Professor Joseph Haslag <i>The Cyclical Behavior of Prices and Inflation</i></p> <p>Yuan Li^Δ Chemistry Professor Michael Greenleaf <i>Strategies for the Attachment of Organic Functional Groups to Silicon Surfaces and Measurement of Vapor Pressure of Ionic Liquids</i></p> <p>Zheng Li Mechanical and Aerospace Engineering Professor Yurwen Zhang <i>Hybrid Lattice Boltzmann and Finite Volume Method for Fluid Flow and Heat transfer Simulations</i></p> <p>Melissa Linden^Δ Exercise Physiology Professor R. Scott Rector <i>Aerobic Exercise Training as a Mitigator of Nonalcoholic Fatty Liver Disease Related Fibrosis</i></p> <p>Sifan Liu^Δ Statistics Professor Dongchu Sun <i>Partially Informative Normal and Partial Spline Models</i></p> <p>Jacqueline Louise Lordo Learning Teaching and Curriculum Professor Wendy Sims <i>Expertise development in musicians: the roles of deliberate play and deliberate practice</i></p> <p>Nathan John Lowrance Information Science and Learning Technologies Professor Heather Moulaison <i>Google Scholar and Meta Descriptions: Does Adding Abstracts to Search Engine Results Page Aid in Undergraduate Document Triage Efficiency?</i></p> <p>Vanessa Ervin Lyons Nursing Professor Lori Popejoy <i>The Use of Surgical Safety Checklists during Preoperative Briefings in Urban and Rural Operating Rooms.</i></p>	<p>Mervat Ahmed Badawy Mahmoud Plant, Insect and Microbial Sciences Professor Bruce Hibbard Professor Robert <i>Effects of western corn rootworm larval feeding, drought, and their interaction on maize performance and rootworm development</i></p> <p>Derek Robert Marr Educational and Counseling Psychology Professor Alexander Waigandt <i>An Exploration Of Self-Determination Theory In Individual Track And Field Olympic Medalists From The 2012 London Games</i></p> <p>Christian Alan Mason Chemistry Professor Mark Lee Jr. <i>Iron-Platinum Nanoparticles as Multifunctional Vehicles in Imaging and Drug Delivery</i></p> <p>Emilia Ohsone-Zargham Mason Chemistry Professor Mark Lee Jr. <i>Polystyrene Coated Iron-Platinum Drug Delivery Platforms for Theranostics and Cytotoxicity of Newly Developed Anti-Cancer Drugs</i></p> <p>Brian McClain Nuclear Engineering Professor Sudarshan Loyalka <i>Sensitivity of Plan Re-Optimization to Errors in Deformable Image Registration in Online Adaptive Image-Guided Radiation Therapy</i></p> <p>Elizabeth Cundiff McConaghy English Professor Scott Cairns <i>Migrations</i></p> <p>Jonathan Alan McElderry Educational Leadership and Policy Analysis Professor Jeni Hart <i>Campus En-Counter: Counternarratives of the Persistence of Black Males at PWIs</i></p> <p>John Elliot Meador Rural Sociology Professor David O'Brien</p> <p>Nicholas Minton Animal Science Professor Monty Kerley <i>Methods to Improve Growth Efficiency in Beef Cattle</i></p> <p>Ajay Mishra Physics Professor Aigen Li <i>Study of Dust in the Interstellar Medium, Circumstellar Envelop, and High Latitude Clouds</i></p>	<p>Brittany Anne Morago Computer Science Professor Ye Duan <i>Multi-Modality Registration for Aligning Photographs, Videos, and LIDAR Range Scans</i></p> <p>Abu Saleh Mohammad Mosa Informatics Professor Illhoi Yoo <i>A Data Mining-based Novel and Dynamic Prediction Engine for Practicing Precision and Personalized Medicine in CINV Prevention</i></p> <p>Kathryn S. Moss Educational Leadership and Policy Analysis Professor Jeni Hart <i>Respiratory Care Board Examination Results and the Influence of Academic Program Type</i></p> <p>Somik Mukherjee^Δ Electrical and Computer Engineering Professor Shubhra Gangopadhyay <i>Utilizing the size dependent crystallinity, catalytic activity and charge retention characteristics of ultrafine sub-2 nm Pt nanoparticles in electrochemical/electrical systems</i></p> <p>Kennedy Musamali^Δ Educational Leadership Professor Barbara Martin Professor David <i>Examining Effective Leadership Practices Across Cultures: A Comparative Study of Higher Education Leaders in Kenya and United States</i></p> <p>Mahmoud Nawar Civil Engineering Professor Hani salim <i>Performance of the Laminated Glass Systems under Static and Blast Pressure Loading</i></p> <p>Alan Nicholas Statistics Professor Tony Sun <i>Functional Data Analysis -- Applications to Children's Mathematical Development</i></p> <p>Kerry Nichols^Δ Anthropology Professor Todd VanPool <i>Late Woodland Cultural Adaptations in the Lower Missouri River Valley; Archery, Warfare and the Rise of Complexity</i></p> <p>Lakshmi Nilakantan^Δ Chemistry Professor Paul R Sharp <i>Synthesis, characterization and photophysical studies of cyclometalated Au(III) complexes</i></p> <p><i>Continued on next page.</i></p>
---	--	---	---

Pieter Russell Norden

Genetics Area Program
Professor George Davis
Molecular control of membrane trafficking mechanisms during endothelial tube formation by Ras superfamily GTPases in three dimensional collagen matrices

Arin Kettle Oestreich

Biological Sciences
Professor Laura Schulz
Professor Charlotte
The role of maternal myostatin deficiency on the development and biomechanical integrity of offspring bone

Christopher Owens

Physics
Professor Gabor Forgacs
Biofabrication and Testing of a Bioprinted Nerve Graft

Timothee Pale^Δ

Biological Sciences
Professor Andrew McClellan
Changes in Properties of Lamprey Reticulospinal Neurons Following Spinal Cord Injury

Youngmin Park^Δ

Exercise Physiology
Professor Jill Kanaley
Professor Victoria
Possible Mechanisms of Metabolic Dysfunction in Ovariectomized Rats: Impact of Intrinsic Aerobic Fitness

Youn-Joo Park

Journalism
Professor Yong Volz
Professional Networks of U.S. Foreign Correspondents and the Reshaping of Journalistic Practices

Janet Stockton Parker

Human Environmental Sciences
Professor Ronald Phillips
Environmental Preferences of Users in Co-located Colleges

Rengarajan Pelapur

Computer Science
Professor Kannappan Palaniappan
Appearance Modeling For Persistent Object Tracking in Wide-Area & Full Motion Video

Michael D Pelts

Social Work
Professor Colleen Galambos
A Study of Intergroup Contact Theory: Using Storytelling to Increase Awareness of Lesbian and Gay Older Adults in Long-Term Care Settings

Zhonghua Peng^Δ

Civil Engineering
Professor Sarah Orton
Experimental and Analytical Evaluation of Disproportionate Collapse in Flat-Plate Buildings

Tharushi Perera^Δ

Chemistry
Professor Paul Sharp
Chlorine and Singlet Oxygen Photoelimination from Organoplatinum(IV) Complexes

M Paulina Perkins^Δ

Educational Leadership and Policy Analysis
Professor Casandra Harper
An Examination of the Study Abroad Advising Process in a University Context

Angela Lee Phillips

Communication
Professor Mitchell McKinney
Professor Jennifer Aubrey
Labor Union Communication: Effects of Labor Media on Local Union Vote Choice

Andrew Pierce

Theatre
Professor Cheryl Black
Professor David Crespy
Developing a Sustainable Business Model for Theatres: A Case Study of Starlight Theatre

Rohini Puri-Bose

Educational and Counseling Psychology
Professor Keith Herman
Structure, Correlates and Distal Outcomes of Early Childhood Perfectionism

Laetitia Ramolino

Industrial Engineering
Professor Thomas Cleveenger
Professor Baolin Deng
Variations of Disinfection by Product Precursors in Northern Missouri Streams Feeding Drinking Water Reservoirs

Asanka Sajeewani Rathnayake

Chemistry
Professor Jerry Atwood
Investigating Reaction Conditions for Controlling the Self-Assembly of Metal-seamed Pyrogallol[4]arene Nanocapsules

Kimberly Marie Reinig

Chemistry
Professor Silvia Jurisson
Professor Carol Dekyne
Sulfide remediation of perchlorate: Interactions with olefinic acids and iron-containing minerals.

Andrew Gene Renner

Mathematics
Professor Shuguang Wang
A Foliated Seiberg-Witten Theory

Caroline Lorene Rodriguez

Educational and Counseling Psychology
Professor Joe Johnston
Chief Executive Officers' Courage: A Semi-Structured Interview

David Rohrer^Δ

Educational and Counseling Psychology
Professor Keith Herman
Developing an Integrated Screening and Progress Monitoring Tool for Internalizing Problems in Middle School Students

Ginger M Rossy Robles

Civil Engineering
Professor Mark Virkler
Methodology for determining the necessity of bicycle lanes on urban streets using simulation and surrogate safety measures.

Liyang Rui

Electrical and Computer Engineering
Professor Dominic Ho
Object Localization Techniques: Performance Analysis and Efficient Solutions

Keivan Sadrerafi^Δ

Chemistry
Professor Mark Lee Jr.
Development of Cancer Targeted Naptm Inhibitors

Kittisak Sajjapongse^Δ

Electrical and Computer Engineering
Professor Michela Becchi
Hierarchical Scheduling and Uniform Access Programming Frameworks for Heterogeneous CPU-GPU Computing Clusters

Daniel James Salamango

Biochemistry
Professor Marc Johnson
Characterizing the Retroviral Envelope Glycoprotein Membrane Proximal External Region and Membrane-Spanning Domains for their Roles in Helical Alignment, Fusogenicity, and Incorporation into Viral Particles

Matthew J Salie

Biochemistry
Professor Jay Thelen
Characterization of new post-translational regulatory factors of the heteromeric acetyl-CoA carboxylase in Arabidopsis thaliana

Dinara Saparova

Information Science and Learning Technologies
Professor Joi Moore
Evaluating the appropriateness of electronic information resources in pre-clerksbip medical education: an eye tracking study

Alexandra Schmidt^Δ

Educational and Counseling Psychology
Professor Keith Herman
Extending the Classroom Check-Up to Parent Involvement: A Brief Teacher Consultation Intervention

Jeffrey Schneiderman^Δ

Forestry
Professor Hong He
Climate Change in the Missouri Central Hardwood Region: Consequences for Forest Landscapes, and Management Strategies

Alexander Schilke

Geology
Professor Alan G Whittington
Rheological evolution of planetary basalts during cooling and crystallization.

Yi Shi

Chemistry
Professor Donald Thompson
A Study of Interpolating Moving Least-Squares Method on Global Potential Energy Surface Fitting

Jungsub Shin

Political Science
Professor James Endersby
A New Measure of Economic Voting: Priority Heuristic Theory and Combining Sociotropic and Egocentric Evaluations

Shenghua Yuan Sinkler

Medical Pharmacology and Physiology
Professor Steven Segal
Attenuation of Rapid Onset Vasodilation with Advanced Age: Roles of Adrenergic and Endothelial Signaling

Joshua Aaron Smart

Philosophy
Professor Matthew McGrath
Meeting Your Own Standards: The Nature and Importance of Epistemic Rationality

Katherine Elizabeth Smith

Information Science and Learning Technologies
Professor John Budd
Effects of Pre-requisite Library Research Instruction on Community College Students in a Introductory Nursing Course

Continued on next page.

Sarah Elizabeth Smith

Biological Engineering
 Professor Sheila Grant
Development of a nanocomposite for musculoskeletal tissue engineering applications

Steven Daniel Smith

Biochemistry
 Professor Judy Wall
Identification and characterization of protein components of the microbial mercury methylation pathway

Susan Rena' Smith

Learning Teaching and Curriculum
 Professor Deborah Hanuscin
An exploratory study of science teacher characteristics and professional development outcomes

Vickie Spain^Δ

Learning Teaching and Curriculum
 Professor Barbara Dougherty
Instructional Strategies Used By Developmental Mathematics Instructors In Missouri Public Community Colleges To Promote Active Learning: An Analysis of the Cognitive Complexity

Alexander Victor St. John

Physics
 Professor Carlos Wexler
Molecular Dynamics Studies of Nanoporous Self-Assembled TSB35 Monolayers

Jason Delona Stanford

Nuclear Engineering
 Professor Sudarshan Loyalka
Implementation of an In vivo Radiochromic Film Dosimetry Procedure

Nicholas Starkey

Biochemistry
 Professor Dennis Lubahn
Mechanisms for the Modulation of Estrogen Receptors by Botanicals, Oxysterols, and Estrogen Related Receptors

Kristine Nicole Stewart

Information Science and Learning Technologies
 Professor John Budd
Exploring Media Influence in the Immigration Debate: A Mixed Methods Study During the Scottish Independence Referendum

Yuelei Sui

Statistics
 Professor Scott Holan
Nonstationary Bayesian Time Series Models with Time-Varying Variance and Regime-Switching

Lushan Sun

Human Environmental Sciences
 Professor Jean Parsons
Accessing Axis: Exploring Design Cognition from Visual and Haptic Experiences as an Apparel Designer in Digital 3D Imaging Using 3D Printing Technology

Jennifer Sykes^Δ

Educational and Counseling Psychology
 Professor Keith Herman
Child Maltreatment and Young Children: Examining Contributing Factors and Impacts of Parenting Programs

Alison Louise Tamasi

Chemistry
 Professor Justin Walensky
Nuclear Forensic Applications of Uranium Oxide Chemistry and Morphology

Nai-En Tang

Learning Teaching and Curriculum
 Professor Lloyd Barrow
The Effect of Reform-Based Science Teaching on SES-Associated Achievement Gap on PISA 2006: A Comparative Study of the United States and Taiwan

Tianyu Tang

Civil Engineering
 Professor Zbigniew Hu
Algae for Wastewater Treatment and Polishing: Development of Methodologies for Algal Growth and Population Analysis and Process Optimization of Algal Membrane Bioreactor

Rama Rao Tata^Δ

Chemistry
 Professor Michael Harmata
The [2,3]-Sigmatropic Rearrangement of Propargylic Sulfonates to Allenic Sulfones and Further Applications to Oxacycles and Dihydrofuranones

Tasia Marie Taxis

Animal Science
 Professor William Lamberson
Comparison of Rumen Microbe Taxa and Function Across Wild and Domestic Ruminants

Erin Kate Taylor

Psychology
 Professor Charles Borduin
Gender Differences in Risks for Antisocial Behavior

Jonathan Thiele^Δ

Psychology
 Professor Jeffrey Rouder
Application of Systems Factorial Technology and Hierarchical Bayesian Modeling to Chunking in Working Memory

Jasmine Tilghman^Δ

Educational and Counseling Psychology
 Professor Norman Gysbers
 Professor Bryana French
Examining the Role of Hardiness, Race-Related Stress, and Racial Identity on Psychological Health Outcomes of Black College Students

Ryan Toedebusch

Biomedical Sciences
 Professor Frank Booth
Cardiorespiratory fitness through the early life course and attempts to modulate its initial decline

Rachel Tomko^Δ

Psychology
 Professor Timothy Trull
Ambulatory Assessment of Physiological Arousal, Emotion, and Alcohol Use

Xiaojun Tong^Δ

Statistics
 Professor Dongchu Sun
 Professor Zhuoqiong
Bayesian Smoothing Spline Models and their Application in Estimating Yield Curves

Tam Minh Tran

Chemistry
 Professor Timothy Glass
Selective Fluorescence Sensors for Glucosamine and Thiaminase's Activities

Henry Tsai^Δ

Pathobiology Area Program
 Professor Casey Holliday
Archosaur hip joint anatomy and its significance in body size and locomotor evolution

Mitch Tucker^Δ

Biological Sciences
 Professor H. Carl Gerhardt
*Behavioral consequences of polyploidy in *Hyla chrysocelis*: Implications for speciation and underlying mechanisms.*

Hakan Us

Nuclear Engineering
 Professor Tusbar Ghosh
Corrosion Behavior of Structural Materials for High Temperature Reactor Systems

Whitley Vale^Δ

Sociology
 Professor Richard Hessler
A Case Study of Organizational Culture Change in a Hospital

Jingjing Wang

Agricultural and Applied Economics
 Professor Peter Klein
 Professor Harvey
Three Essays on Entrepreneurship Theory and Practice

Ting Wang

Economics
 Professor Christopher Otrok
Essays on Financial shocks, business cycles and optimal monetary policy

Ting Wang^Δ

Psychology
 Professor Edgar Merkle
Use of Score-Based Tests in IRT Models

Xi Wang

Economics
 Professor J. Isaac Miller
Three essays about issues on Mixed Frequency Data

Xinhui Wang

Medical Pharmacology and Physiology
 Professor Alan Parrish
The Role Of The Age-Dependent Loss Of a(E)-Catenin In Increased Acute Kidney Injury

Rebecca L Whitworth

Economics
 Professor Joseph Haslag
Settlement Risk and Price Dynamics in an Overlapping Generations Model

Benjamin Winegard^Δ

Psychology
 Professor David Geary
What would James Bond do? Signaling and precarious manhood

Chao Wu

Economics
 Professor Xiaoguang Ni
 Professor Michael Podgursky

Jia Xu

Biochemistry
 Professor Steven Van Doren
 Professor Lesa Beamer
Residues networks within phosphomannomutase/phosphoglucomutase: NMR and multivariate analysis

Ping Yang

Educational and Counseling Psychology
 Professor Ze Wang
Bayesian Parameter Estimation for Two IRT Models: Rasch Model and Two-parameter Nested Logit Model

Continued on next page.

Yiqun Yang

Statistics
Professor Chong (Zhuoqiong) He
*Bayesian Hierarchical Modeling in
Nest Survival Study*

Zhiyu Yang

Chemistry
Professor Kent Gates
*Formation and properties of
interstrand DNA-DNA cross-
links derived from abasic sites*

Jihun Yoo

English
Professor Andrew Hoberek
*The Frontier Myth and the 20th
Century American Fiction*

Hyun Shik Yoon^Δ

Industrial Engineering
Professor Luis G. Occena
*An Integrated Model of C2C
E-Commerce Usage Focusing
on Personality, Usability, Risk,
Social Influence, and Institutional
Feature Dimensions*

Ronald John Zank

Theatre
Professor David Crespy
*If the wizard is a wizard who will
serve: The Movical and Shifting
Receptions of the Munny and
Royal Shakespeare Company's
Stage Adaptations of MGM's The
Wizard of Oz*

Feng Zhao Zhang

Mechanical and Aerospace Engineering
Professor Hongbin Ma
*Wettability Effect on Oscillating Heat
Pipes*

Sheng Zhang

Philosophy
Professor Peter Vallentyne
*Epistemic Democracy and Political
Legitimacy*

Xia Zhang^Δ

Accountancy
Professor Inder Khurana
*Does CEO Tenure Influence
Corporate Bond Rating
Properties?*

Jing Zhao

Agricultural and Applied Economics
Professor Wyatt Thompson
*Three Essays on Agricultural Policy
and Food Demand*

Li Zhao^Δ

Human Environmental Sciences
Professor Jung Ha-Brookshire
*The Impact of Founders' Personality
Traits on the Performance of
Chinese Apparel New Ventures*

Yusheng Zhao

Chemical Engineering
Professor Galen Suppes
*Modeling of Rigid Polyurethane
Foaming Process*

Zhongna Zhou

Electrical and Computer Engineering
Professor Zhibai He
*Semi-supervised Kernel Learning
with Applications on Object
Tracking and Image Classification*

DOCTOR OF EDUCATION

^ΔDenotes Summer 2015 graduate

Melissa Bess^Δ
Educational Leadership
 Professor Bradley Curs
Leadership and Health: An Examination of Authentic Leadership Characteristics and Physical Health Behaviors

Tammy Brotherton
Educational Leadership
 Professor David Stader
Linking Professional Development to Student Achievement: What Effect Does the Level of Implementation of the MO PLC Project in Schools Have on Student Achievement?

James Cook^Δ
Educational Leadership
 Professor Paul Watkins
The Significance of Writing Skills and Other Competency Variables in Predicting Student Success in Online MBA Courses

Ty Crain^Δ
Educational Leadership
 Professor Timothy Wall
Quantitative Analysis of the Relationship Between Factors of Servant Leadership, School Culture and Academic Achievement in Missouri Middle-Level Schools

Robin E Grebing
Educational Leadership
 Professor Paul Watkins
The Effect of an Online Plagiarism Tutorial on Student Perceptions of Cheating

Edwin Dale Hall
Educational Leadership
 Professor Joe Donaldson
School Bonding Theory and Female Juvenile Delinquency

Joshua Isaacson^Δ
Educational Leadership
 Professor Paul Watkins
Preschool Effectiveness: The Impact of Attending a School District Affiliated Prekindergarten Program on Student Success

Daniel H Jensen
Educational Leadership
 Professor Sandy Hutchinson
Utilization-focused Evaluation of the Cohort-based Executive M.B.A. Program Offered by the Helzberg School of Management at Rockhurst University

Helen Porter^Δ
Educational Leadership
 Professor Noelle Arnold
Transition to a new high school: Teachers' perception regarding secondary school reorganization.

Jason William Stanoch
Educational Leadership
 Professor Peggy Placier
 Professor Ty-Ron Douglas
An Action Research Study of Program Implementation in a Rural Reservation School District

Kevin Robert Whaley
Educational Leadership
 Professor Timothy Wall
Examining the Digital Divide: The Impact of School District Technology Resources on High School Student, Online, End-of-Course Exam Performance in Missouri

Jeremy David Wolfe
Educational Leadership
 Professor Robert Watson
 Professor Cynthia MacGregor
A Comparative Study of Homeschooled Students and Traditionally Schooled Students after Completion of a Midwestern University First-year Experience Program

DOCTOR OF NURSING PRACTICE

^ΔDenotes Summer 2015 graduate

Nicola Keeth^Δ
Nursing
 Professor Jane Bostick

Tamara Tinnin^Δ
Nursing
 Professor Robin Harris

DOCTOR OF PHYSICAL THERAPY

^ΔDenotes Summer 2015 graduate

Shane Hamilton^Δ
Physical Therapy
 Professor Teresa Briedwell

EDUCATIONAL SPECIALIST

[^]Denotes Summer 2015 graduate

Carlos A. Blanco
Educational and Counseling Psychology
Professor Lisa Flores

Maria Ann Britt
Educational and Counseling Psychology
Professor Lisa Flores

Julie Bryan
Educational Leadership and Policy
Analysis
Professor Carol Maber
Professor Juanita Simmons

Julia Eileen Coggins
Educational Leadership and Policy
Analysis
Professor David Belcher

Kimberly Layne Davis
Educational and Counseling Psychology
Professor Lisa Flores

Christina Edholm
Information Science and Learning
Technologies
Professor Jane Howland

Jill Marie Edwards
Educational Leadership and Policy
Analysis
Professor David Belcher

Stephanie Embry[^]
Information Science and Learning
Technologies
Professor Aimee Klimczak

Kristina Lee Gregory
Educational and Counseling Psychology
Professor Lisa Flores

Cory Hanavan
Information Science and Learning
Technologies
Professor Aimee Klimczak

Amanda Lindsey Holloway
Information Science and Learning
Technologies
Professor Jane Howland

Rochelle Kizhnerman[^]
Educational and Counseling Psychology
Professor Lisa Flores

Troy Wayne Lentz
Educational Leadership and Policy
Analysis
Professor David Belcher

John Long[^]
Educational and Counseling Psychology
Professor Lisa Flores

Joshua Milne[^]
Information Science and Learning
Technologies
Professor Aimee Klimczak

Lisa Morrison
Information Science and Learning
Technologies
Professor Jane Howland

Desiree Nicole Pezley
Educational Leadership and Policy
Analysis
Professor David Belcher

Jayne Pingrey
Learning Teaching and Curriculum
Professor Amy Lannin

Deana Michelle Pope
Information Science and Learning
Technologies
Professor Aimee Klimczak

Maximilian Kolbe Pott
Educational Leadership and Policy
Analysis
Professor Carol Maber

Holly Salters[^]
Educational and Counseling Psychology
Professor Lisa Flores

Jason Stockwell[^]
Educational Leadership and Policy
Analysis
Professor Noelle Arnold

Nicholas David Straatmann
Educational Leadership and Policy
Analysis
Professor Lisa Dorner

Carlos Torres[^]
Information Science and Learning
Technologies
Professor Aimee Klimczak

Melanie Luann Utterback
Learning Teaching and Curriculum
Professor Deborah Hanuscin

Amy Walker[^]
Information Science and Learning
Technology
Professor Aimee Klimczak

Lindsay Weiss[^]
Educational and Counseling Psychology
Professor Lisa Flores

MASTER OF ACCOUNTANCY

Shelby Boehm
Accountancy
Professor Vairam Arunachalam

Alexandra Jane Brown
Accountancy
Professor Vairam Arunachalam

Thomas Deuschle Jr.
Accountancy
Professor Vairam Arunachalam

Erin MacKenzie Dolan
Accountancy
Professor Vairam Arunachalam

Thomas Vincent Groff
Accountancy
Professor Vairam Arunachalam

Scott Daniel Herring
Accountancy
Professor Vairam Arunachalam

Mark Andrew Jaskowiak
Accountancy
Professor Vairam Arunachalam

Sung Oh Kim
Accountancy
Professor Vairam Arunachalam

Jason Christopher Kuziel
Accountancy
Professor Vairam Arunachalam

Allison Mae Lowery
Accountancy
Professor Vairam Arunachalam

Dominic Martinez
Accountancy
Professor Vairam Arunachalam

Jennifer Nicole McRobert
Accountancy
Professor Vairam Arunachalam

Clinton Ray Metheny
Accountancy
Professor Vairam Arunachalam

Timothy August Pettey
Accountancy
Professor Vairam Arunachalam

Alexander James Pirotte
Accountancy
Professor Vairam Arunachalam

Jaclyn Kate Poe
Accountancy
Professor Vairam Arunachalam

Andrew Todd Reilly
Accountancy
Professor Vairam Arunachalam

Leland David Schoenhoff
Accountancy
Professor Vairam Arunachalam

Madeline Christiane Slinker
Accountancy
Professor Vairam Arunachalam

Bryce Steven Smith
Accountancy
Professor Vairam Arunachalam

Joseph Michael Urschler
Accountancy
Professor Vairam Arunachalam

Chance Patrick Williams
Accountancy
Professor Vairam Arunachalam

Bryan Wolz
Accountancy
Professor Vairam Arunachalam

Jordan Thomas Wybrant
Accountancy
Professor Vairam Arunachalam

MASTER OF ARTS

^ΔDenotes Summer 2015 graduate

Whitney Adams^Δ
Educational and Counseling Psychology
Professor Lisa Flores

Stacy Addison^Δ
Journalism
Professor Thomas Warbover

Haley Anthes^Δ
Information Science and Learning
Technologies
Professor Denice Adkins

Natalie Marie Ault
Journalism
Professor Margaret Duffy

Heather Bailey^Δ
Journalism
Professor Margaret Duffy

Mary Kate Baumann^Δ
Journalism
Professor Harsh Taneja

Margaret Rosalind Bedwell
Journalism
Professor Cynthia Frisby

Katherine Rose Bellesheim
Psychology
Professor Shawn Christ

Joshua Mark Benson
Journalism
Professor David Herzog

Casey Bischel
Journalism
Professor Berkley Hudson

Paige Blankenbuehler
Journalism
Professor William Allen

Michelle Bollinger
Human Development and Family
Studies
Professor Ashlie Lester

Mary Elizabeth Bonnette
Journalism
Professor Cynthia Frisby

Robert E. Boon
Geography
Professor Mark Palmer

Katherine Booth^Δ
Mathematics
Professor Dix Pettey

Ian Patrick Brickey
History
Professor Jeffrey Pasley

Kathryn Heather Brockmeier
Information Science and Learning
Technologies
Professor Sanda Erdelez

Donal Thomas Buckner
Human Development and Family
Studies
Professor Melissa Herzog

Michelle Bullock
Information Science and Learning
Technologies
Professor Rebecca Pasco

Douglass Butler
History
Professor Lois Huneycutt

Jerri Campbell^Δ
Information Science and Learning
Technologies
Professor John Budd

Stephen Carberry^Δ
Educational and Counseling Psychology
Professor Brandon Orr

Austin Case^Δ
Information Science and Learning
Technologies
Professor Heather Moulaison

Elizabeth Castle^Δ
Journalism
Professor Jennifer Rowe

Betsabe Dianne Castro Escobar
Anthropology
Professor Robert Walker

Virginia D Chadwick
Journalism
Professor Shelly Rodgers

Victoria Elena Christiansen
Journalism
Professor Cynthia Frisby

Anna Cole
Journalism
Professor Martha Steffens

Gina Conde^Δ
Human Development and Family
Studies
Professor Jacquelyn Benson

Heather Craig^Δ
Anthropology
Professor R. Lee Lyman

Heidi Czlapinski
Communication
Professor Brian Houston

Gwendolyn Faith Daniels
Journalism
Professor Margaret Duffy

Tatiana Darie
Journalism
Professor Randy Smith

Abbey Knight Dean
Journalism
Professor Berkley Hudson

Joseph DeAngelis^Δ
Anthropology
Professor R. Lee Lyman

Rebecca Dell^Δ
Journalism
Professor Cynthia Frisby

Lee Anne Denyer^Δ
Journalism
Professor Stacey Woelfel

Diamond Marie Dixon
Journalism
Professor Glen Cameron

Olga Dorovskiykh^Δ
Journalism
Professor Timothy Vos

Steven Dotson^Δ
History
Professor Dr. Ian Worthington

Kevin Drew
Journalism
Professor Randy Smith

Samantha Rose DuPree
Information Science and Learning
Technologies
Professor Beth Brendler

Melissa Ann Eckhoff
Human Development and Family
Studies
Professor Russ Ravert

Lauren Patrice Elliott
Journalism
Professor Berkley Hudson

John Joseph Farmer De La Torre
Journalism
Professor Keith Greenwood

Danae Faulk^Δ
Religious Studies
Professor Richard Callahan Jr.

Andrew Christopher Fish
Economics
Professor X.H. Wang

Lauren Elizabeth Flaker
Journalism
Professor Paul Bolls

Amelia Sue Fortner
Information Science and Learning
Technologies
Professor Twyla Gibson

Aaron Franco
Journalism
Professor Ryan Thomas

Nicole Garner
Journalism
Professor Cynthia Frisby

Samantha Gilbert^Δ
Information Science and Learning
Technologies
Professor Jenny Bossaller

HyungJin Gill
Journalism
Professor Paul Bolls

Sonia Giron^Δ
Psychology
Professor Nicole Campione-Barr

Tracey Catherine Goldner
Journalism
Professor Jeanne Abbott

Eduardo Gonzalez
Journalism
Professor Earnest Perry
Professor Jim

Valerie Lynn Guglielmi
Journalism
Professor Fritz Cropp

Siyuan Guo
Statistics
Professor Zhuoqiong He

Zhujin Guo^Δ
Economics
Professor J. Isaac Miller

Joseph Gregory Guskowski
Journalism
Professor Michael McKean

Meghan Haines^Δ
Information Science and Learning
Technologies
Professor Beth Brendler

Teah Hairston^Δ
Sociology
Professor Eileen Bjornstrom

Warshieta Hammond
Human Development and Family
Studies
Professor Melissa Herzog

Continued on next page.

<p>Joy Han <i>Journalism</i> Professor Cristina Mislán</p> <p>Katelyn Harlin^Δ <i>English</i> Professor Christopher Okonkwo</p> <p>Kristin Jennifer Harper <i>Classical Languages</i> Professor Raymond Marks</p> <p>Sadie Harrison <i>Human Development and Family Studies</i> Professor Ashlie Lester</p> <p>Ebonie M Hawthorne <i>Human Development and Family Studies</i> Professor Melissa Herzog</p> <p>Lindsay Healey^Δ <i>Information Science and Learning Technologies</i> Professor Heather Moulaison</p> <p>Michaela Hoffman^Δ <i>Statistics</i> Professor Christopher Wikle</p> <p>Katie Holland^Δ <i>Information Science and Learning Technologies</i> Professor Beth Brendler</p> <p>Fiona Holly^Δ <i>Information Science and Learning Technologies</i> Professor Heather Moulaison</p> <p>Christopher Charles Holly Jr. <i>Geography</i> Professor Timothy Matisziw</p> <p>Ethan Howe^Δ <i>Philosophy</i> Professor Philip Robbins</p> <p>Raymond Howze <i>Journalism</i> Professor Ryan Thomas</p> <p>Maureen Fae Hurley <i>Human Development and Family Studies</i> Professor Ashlie Lester</p> <p>Kexin Jiang^Δ <i>Economics</i> Professor Peter Mueser</p> <p>Sarah Jinkerson^Δ <i>Information Science and Learning Technologies</i> Professor Denise Adkins</p> <p>Benjamin Johnides^Δ <i>Psychology</i> Professor Charles Borduin</p> <p>Amanda Elizabeth Kappele <i>Journalism</i> Professor Cristina Mislán</p>	<p>Bethanie Suzanne Karfs <i>Educational and Counseling Psychology</i> Professor Brandon Orr</p> <p>Christopher Michael Kemp <i>Statistics</i> Professor Jianguo Sun</p> <p>Gregory M. Kendall-Ball <i>Journalism</i> Professor David Rees</p> <p>Max Kammer Kerwick <i>Journalism</i> Professor Paul Bolls</p> <p>Olivia Rae King <i>Journalism</i> Professor Paul Bolls</p> <p>Michelle Knapp^Δ <i>Information Science and Learning Technologies</i> Professor Denise Adkins</p> <p>Megan Annette Koch <i>Communication</i> Professor Debbie Dougherty Professor Rebecca</p> <p>Joan Koka^Δ <i>Journalism</i> Professor David Herzog</p> <p>Michael Lam <i>Architectural Studies</i> Professor Bimal Balakrishnan</p> <p>Lauren Meredith Langille <i>Journalism</i> Professor Randall Smith</p> <p>Caitlin Elizabeth Lawrence <i>History</i> Professor Jeffrey Pasley</p> <p>Seungyub Lee <i>Economics</i> Professor J. Isaac Miller</p> <p>Kimberly Leone <i>Journalism</i> Professor Esther Thorson</p> <p>Anna Lucia Leonhard <i>Information Science and Learning Technologies</i> Professor Heather Moulaison</p> <p>Daniel Leveton <i>Journalism</i> Professor Margaret Duffy</p> <p>Allison Elise Lewis <i>Journalism</i> Professor Berkeley Hudson</p> <p>Xiaoqian Li <i>Journalism</i> Professor Katherine Reed</p> <p>Yin Liang <i>Statistics</i> Professor Zhuoqiong He</p>	<p>Li Lin <i>Journalism</i> Professor Randall Smith</p> <p>Shinuan Lin <i>Statistics</i> Professor Zhuoqiong He</p> <p>Ellen Lindberg^Δ <i>Information Science and Learning Technologies</i> Professor Denise Adkins</p> <p>Wade G. Livingston <i>Journalism</i> Professor Jacqui Banaszynski</p> <p>Elizabeth Lorang^Δ <i>Information Science and Learning Technologies</i> Professor Thomas Kocbtanek</p> <p>Steven Mackey^Δ <i>Statistics</i> Professor Lori Thombs</p> <p>Megan Madden <i>Journalism</i> Professor Jennifer Rowe</p> <p>Natalie Maggiore <i>Journalism</i> Professor John Fennell</p> <p>Joseph Alan Mahr <i>Journalism</i></p> <p>Sonja Mangham^Δ <i>Human Development and Family Studies</i> Professor Melissa Herzog</p> <p>Garrett Marks-Wilt^Δ <i>Philosophy</i> Professor Philip Robbins</p> <p>Tyler Jordan McConnell <i>Journalism</i> Professor Ryan Thomas</p> <p>Sean McCrary^Δ <i>Economics</i> Professor Saku Aura</p> <p>Sean McCrary^Δ <i>Statistics</i> Professor Sakis Micheas</p> <p>Brittany Pieper McElroy <i>Journalism</i> Professor Lynda Kraxberger</p> <p>Andrew Meland <i>Religious Studies</i> Professor Dennis Kelley</p> <p>Gerald Leeland Mitchell <i>Psychology</i> Professor Laura King</p> <p>Erik Mueller^Δ <i>Geography</i> Professor Timothy Haitbcoat</p> <p>Amanda Nichols^Δ <i>Religious Studies</i> Professor Daniel Cohen</p>	<p>Mark Frederic Nicolais <i>Religious Studies</i> Professor Jill Raitt</p> <p>Caleb O'Brien <i>Journalism</i> Professor Mary Blakely</p> <p>Jacqueline Otto^Δ <i>Psychology</i> Professor Ian Gizer</p> <p>Sifan Ouyang <i>Journalism</i> Professor Shelly Rodgers</p> <p>Joseph Pandolfo Jr.^Δ <i>Economics</i> Professor Joseph Haslag</p> <p>Joseph Pandolfo Jr.^Δ <i>Statistics</i> Professor Paul Speckman</p> <p>Jessica M Park <i>Information Science and Learning Technologies</i> Professor Beth Brendler</p> <p>Brian Publow^Δ <i>Information Science and Learning Technologies</i> Professor Jenny Bossaler</p> <p>Rebecca Anne Pursley <i>Art History and Archaeology</i> Professor James Van Dyke</p> <p>Zahra Rasool <i>Journalism</i> Professor Stacey Woefel</p> <p>Rebekah Marie Rigby <i>Journalism</i> Professor Cynthia Frisby</p> <p>Amy Roberts^Δ <i>Journalism</i></p> <p>Lauren Rose <i>German</i> Professor Kristin Kopp</p> <p>Johanna Ross <i>Human Development and Family Studies</i> Professor Melissa Herzog</p> <p>Lucian Rothe^Δ <i>German</i> Professor Kristin Kopp</p> <p>Jeremy Aaron Rowles <i>Anthropology</i> Professor Robert Walker Professor Craig</p> <p>Michelle Anna Ruterbories <i>Information Science and Learning Technologies</i> Professor Jenny Bossaller Professor Laura</p>
---	---	---	--

Continued on next page.

John Scanlan
Journalism
Professor Keith Greenwood
Professor John

Dawn Lynn Schillinger
Journalism
Professor Paul Bolls

Dana Marie Schmidt
Anthropology
Professor Lisa Sattenspiel

Ryan Schuessler
Journalism
Professor Fritz Cropp

Anna Seaman
Journalism
Professor Andrea Heiss

Mark Robert Selig
Journalism
Professor Jacqui Banaszynski

Jessica Shearin^Δ
Educational and Counseling Psychology
Professor Melissa Maras

Katelyn R Sherman
Human Development and Family Studies
Professor Ashlie Lester

Ekaterina Shevchenko
Russian & Slavonic Studies
Professor Gennady Barabtarlo

Joseph Simpson
English
Professor Martha Townsend

Wesley Sims^Δ
Educational and Counseling Psychology
Professor T. Chris Riley-Tillman

Stefanie Skrdla^Δ
Information Science and Learning Technologies
Professor Rebecca Pasco

Taylor Anne Soldner
Journalism
Professor Shelly Rodgers

Steven Reed Stafford
Human Development and Family Studies
Professor Jacquelyn Benson

Sarah A. Strasburg
Journalism
Professor Fritz Cropp

Christopher Sutton^Δ
Russian & Slavonic Studies
Professor Gennady Barabtarlo

Abby Swaim^Δ
Anthropology
Professor R. Lee Lyman

Li Tan
Economics
Professor Cory Koedel

Samuel Matthias Tham
Journalism
Professor Esther Thorson

Terrell Thomson^Δ
Journalism
Professor Keith Greenwood

Qing Tian
Journalism
Professor David Herzog

Jennifer Ann Travers
Journalism
Professor Shelly Rodgers

Meredith Turk^Δ
Journalism
Professor Randall Smith

Adrian James Twombly
Human Development and Family Studies
Professor Ashlie Lester

Chelsie Marie Veasman
Journalism
Professor Jonathan Stemmler

Jillian Vidal^Δ
Information Science and Learning Technologies
Professor Denice Adkins

Juanbin Wang
Statistics
Professor Zhuboqiong He

Xihao Wang^Δ
Economics
Professor David Kaplan

Yuchen Wang^Δ
Statistics
Professor Chong He

Vincent Warner
Anthropology
Professor Michael O'Brien

Frances Y Webber
Journalism
Professor Sungkyoung Lee

Richard Neal Webner
Journalism
Professor Debra Mason

Andrea Lynn Weed
Journalism
Professor Cynthia Frisby

Jonathan Michael Whitfield
Information Science and Learning Technologies
Professor Sanda Erdelez

Kerrigan Williams
Journalism
Professor Suzette Heiman

Hannah Witt^Δ
History
Professor Lois Huneycutt

Landon Woodroof
Journalism
Professor Earnest Perry

Chapin Wright
Journalism
Professor Margaret Duffy

Chao Wu
Mathematics
Professor Allanus Tsoi

Weiwei Wu
Economics
Professor Shawn Ni

Stephanie Wybrant
Human Development and Family Studies
Professor Russell Ravent

Xiao Xiao
Statistics
Professor Chong He

Fei Xie
Statistics
Professor Jianguo Sun

Qing Yang
Statistics
Professor Zhuboqiong He

Andrew T. Yost
Journalism
Professor Harsh Taneja

Dongjun You^Δ
Statistics
Professor Xianyang Zhang

Peiran Yu
Economics
Professor David Kaplan

Peiran Yu
Statistics
Professor Christopher Wikle

Benqian Zhang^Δ
Statistics
Professor Chong He

Siyang Zhang
Geography
Professor Mike Urban

Nancy Jean Zubrod
Information Science and Learning Technologies
Professor Sanda Erdelez

MASTER OF BUSINESS ADMINISTRATION

^ΔDenotes Summer 2015 graduate

Mary Kate Baumann^Δ
Business Administration
Professor Barbara Schneider

Livia Cristina Miranda Borges Domingues
Business Administration
Professor Barbara Schneider

Kyle R. Holley
Business Administration
Professor Barbara Schneider

Jieshan Huang
Business Administration
Professor Barbara Schneider

Michael John Kolisch Jr.
Business Administration
Professor Barbara Schneider

Xiao Li^Δ
Business Administration
Professor Barbara Schneider

Ravish Mehta
Business Administration
Professor Barbara Schneider

Prathamesh Nitin Shingote
Business Administration
Professor Barbara Schneider

MASTER OF EDUCATION

^ΔDenotes Summer 2015 graduate

^{ΔΔ}Denotes Spring 2015 graduate

Jeremy Acton^Δ
Learning Teaching and Curriculum
Professor Troy Sadler

Amy Lynn Adams
Special Education
Professor Nancy Gerardy

Bethany Rose Ahlersmeyer^Δ
Learning Teaching and Curriculum
Professor Melissa Stormont

Abraham Ambroza
Educational and Counseling Psychology
Professor Brandon Orr

Olivia Amick^Δ
Learning Teaching and Curriculum
Professor Lenny Sanchez

Eric Randolph Anderson
Information Science and Learning Technologies
Professor Aimee Klimczak

Kayleen Archambault^Δ
Learning Teaching and Curriculum
Professor Marcelle Siegel

Aubrey Ann Ash
Learning Teaching and Curriculum
Professor Zandra de Araujo

Amanda Aspey^Δ
Learning Teaching and Curriculum
Professor Carol Gilles

Tracy Jean Atkinson
Learning Teaching and Curriculum
Professor Nikki Asbcraft

Hayley Atkisson^Δ
Learning Teaching and Curriculum
Professor Zandra de Araujo

Erika Atterbury^Δ
Learning, Teaching and Curriculum
Professor Kathleen Unrath

Ryan Lee Barnes
Learning Teaching and Curriculum
Professor Rachel Pinnow

Christi Barrow^Δ
Information Science and Learning Technologies
Professor Aimee Klimczak

John Bassett^Δ
Educational and Counseling Psychology
Professor Brandon Orr

Shyla Baxter^Δ
Educational Leadership and Policy Analysis
Professor Juanita Simmons

Paige Beaström^Δ
Learning Teaching and Curriculum
Professor Nancy Knipping

Nicholas Beckman^Δ
Educational and Counseling Psychology
Professor Brandon Orr

Lisa Beczkala^Δ
Learning Teaching and Curriculum
Professor Lenny Sanchez

Sarah Nicole Behnen^Δ
Learning Teaching and Curriculum
Professor Nancy Knipping

April Beissenherz^Δ
Learning Teaching and Curriculum
Professor Sam Otten

Amy Berry^Δ
Learning Teaching and Curriculum
Professor Sam Otten

Debra Biermann^Δ
Special Education
Professor Nancy Gerardy

Kierstie Bischoff^Δ
Learning Teaching and Curriculum
Professor Carol Gilles

Kerstyn Alexandra Bolton^Δ
Learning Teaching and Curriculum
Professor Lenny Sanchez

Jason Bourne^Δ
Information Science and Learning Technologies
Professor Aimee Klimczak

Zach Bove
Educational and Counseling Psychology
Professor Brandon Orr

Samantha Bratcher^Δ
Learning Teaching and Curriculum
Professor Sam Otten

Lauren Bremer^Δ
Learning Teaching and Curriculum
Professor Zandra de Araujo

Heather Briles^Δ
Learning Teaching and Curriculum
Professor Lloyd Barrow

Alicia Brinker^Δ
Learning Teaching and Curriculum
Professor Troy Sadler

Chadwick Brinkmeyer^Δ
Educational Leadership and Policy Analysis
Professor Mary Maher

Paula Britton^Δ
Learning Teaching and Curriculum
Professor Nancy Knipping

James Brown^Δ
Educational and Counseling Psychology
Professor Brandon Orr

Taylor Brown^Δ
Learning Teaching and Curriculum
Professor Troy Sadler

Cortland Kei Ante Browning
Educational and Counseling Psychology
Professor Brandon Orr

Kimberly Broyles
Information Science and Learning Technologies
Professor Aimee Klimczak

Jacqueline Burgoon^Δ
Learning Teaching and Curriculum
Professor Nancy Knipping

Rusty Burney^Δ
Educational and Counseling Psychology
Professor Brandon Orr

April Burton^Δ
Information Science and Learning Technologies
Professor Aimee Klimczak

Michael Buskirk^Δ
Educational Leadership and Policy Analysis
Professor David Belcher

Chuting Cao
Learning, Teaching and Curriculum
Professor Kathleen Unrath

Continued on next page.

William Anderson Carey
Educational and Counseling Psychology
Professor Brandon Orr

Robert Castanzo^Δ
Learning Teaching and Curriculum
Professor Carol Gilles

Krizzia Castro^Δ
Learning Teaching and Curriculum
Professor Troy Sadler

Robert Chan^Δ
Learning Teaching and Curriculum
Professor Sam Otten

Kyle Christian^Δ
Learning Teaching and Curriculum
Professor Sam Otten

Sarah Clinton^Δ
Educational and Counseling Psychology
Professor McGuire Richard

Ty Cochran^Δ
Educational and Counseling Psychology
Professor Brandon Orr

Ashley Coffman
Educational and Counseling Psychology
Professor Lisa Flores

Seth Colston^Δ
Learning Teaching and Curriculum
Professor Sam Otten

Katie Considine^Δ
Learning Teaching and Curriculum
Professor Lenny Sanchez

Haley Michelle Cook
Special Education
Professor Rebecca McCathren
Professor Jenna Randolph

Ryan Courier^Δ
Learning Teaching and Curriculum
Professor Nancy Knipping

Sarah Covey^Δ
Educational and Counseling Psychology
Professor Brandon Orr

Taylor Cowan^Δ
Learning Teaching and Curriculum
Professor Lenny Sanchez

Dawn Michelle Craighead^{ΔΔ}
Educational and Counseling Psychology
Professor Joe Johnston

Andrew James Crawford^Δ
Learning Teaching and Curriculum
Professor Zandra de Araujo

Jeana Kay Crump
Learning Teaching and Curriculum
Professor Lenny Sanchez

Joelle Marie Curcio
Learning Teaching and Curriculum
Professor James Baumann

Nicole Dabney^Δ
Learning Teaching and Curriculum
Professor Carol Gilles

Lesley Dalan^Δ
Learning Teaching and Curriculum
Professor Sam Otten

Tamara Louise Davenport
Career and Technical Education
Professor Anthony Barbis

Trevor George Davis
Educational and Counseling Psychology
Professor Brandon Orr

Megan Dawes^Δ
Learning Teaching and Curriculum
Professor Betsy Baker

Jennifer Day^Δ
Learning Teaching and Curriculum
Professor Lenny Sanchez

Meredith DiFranco^Δ
Learning Teaching and Curriculum
Professor Elizabeth Baker

Tina Marie Dillon
Information Science and Learning Technologies
Professor Aimee Klimczak

Allison Renee Dingler
Learning Teaching and Curriculum
Professor Nikki Ashcraft

Natalie Dobbin^Δ
Learning Teaching and Curriculum
Professor Lenny Sanchez

Sara Doerhoefer^Δ
Learning Teaching and Curriculum
Professor Sam Otten

Lindsey Donelson^Δ
Learning Teaching and Curriculum
Professor Nancy Knipping

Michael Thomas Donovan
Educational and Counseling Psychology
Professor Brandon Orr

Nicholas Draper
Learning Teaching and Curriculum
Professor Wendy Sims

Tayla Drowns^Δ
Learning Teaching and Curriculum
Professor Elizabeth Baker

Crystal Duryea^Δ
Learning Teaching and Curriculum
Professor Lloyd Barrow

John Eblen^Δ
Educational and Counseling Psychology
Professor Richard McGuire

Emily Eck^Δ
Learning Teaching and Curriculum
Professor Lenny Sanchez

Ryan Edwards^Δ
Educational Leadership and Policy Analysis
Professor David Belcher

Brian Emma^Δ
Information Science and Learning Technologies
Professor Julie Caplow
Professor Aimee Klimczak

Jessica Engelbrecht^Δ
Learning Teaching and Curriculum
Professor Elizabeth Baker

Kristen Engle^Δ
Learning Teaching and Curriculum
Professor Carol Gilles

Amy Elizabeth Engle-Evans
Educational and Counseling Psychology
Professor Brandon Orr

Shelby Enright^Δ
Learning Teaching and Curriculum
Professor Lloyd Barrow

Katie Lynn Evans
Educational and Counseling Psychology
Professor Brandon Orr

Robert Ferriell
Information Science and Learning Technologies
Professor Jane Howland

Odetta Fields^Δ
Educational Leadership and Policy Analysis
Professor Mary Maber
Professor David Belcher

Hope Fine
Educational Leadership and Policy Analysis
Professor Jeni Hart

Penny Foore
Educational and Counseling Psychology
Professor Brandon Orr

Bethany Ford^Δ
Learning Teaching and Curriculum
Professor Nikki Ashcraft

Amy Fournie^Δ
Learning Teaching and Curriculum
Professor Carol Gilles

Tyler Robert Francis^Δ
Learning Teaching and Curriculum
Professor Sam Otten

Michael Richard Franklin
Learning Teaching and Curriculum
Professor Nikki Ashcraft

Christopher Fritz^Δ
Educational and Counseling Psychology
Professor Brandon Orr

Jaime Gaard^Δ
Educational and Counseling Psychology
Professor Brandon Orr

Javier Valentine Garcia
Educational and Counseling Psychology
Professor Brandon Orr

Madelline Gebhardt^Δ
Learning Teaching and Curriculum
Professor Lenny Sanchez

Michelle Gerchen^Δ
Learning Teaching and Curriculum
Professor Tony Castro

Elizabeth Kay Gergian
Learning Teaching and Curriculum
Professor Wendy Sims

Brenna Gerke^Δ
Learning Teaching and Curriculum
Professor Melissa Stormont

Tammy Marie Gillespie
Information Science and Learning Technologies
Professor Jane Howland

Uriah Goldfinger
Educational and Counseling Psychology
Professor Brandon Orr

Judy Gomel^Δ
Learning Teaching and Curriculum
Professor Anthony Barbis

Eric Goolish^Δ
Educational and Counseling Psychology
Professor Brandon Orr

Timothy Richard Gould
Educational and Counseling Psychology
Professor Brandon Orr

Ginia Gowin
Learning Teaching and Curriculum
Professor Kathleen Unrath

Erin Grady^Δ
Learning Teaching and Curriculum
Professor Tony Castro

Corinne Marie Greear
Learning Teaching and Curriculum
Professor Zandra de Araujo

Justin Griffith^Δ
Educational Leadership and Policy Analysis
Professor David Belcher

Denise Gronemeyer^Δ
Educational and Counseling Psychology
Professor Sandra Sites

Adam Gutschenritter
Learning Teaching and Curriculum
Professor Tony Castro

Amber Haarmann^Δ
Learning Teaching and Curriculum
Professor Marcelle Siegel

Connor Renae Hall^Δ
Learning Teaching and Curriculum
Professor Melissa Stormont

Meagan Halphin^Δ
Educational Leadership and Policy Analysis
Professor David Belcher

Amanda Hansen^Δ
Learning Teaching and Curriculum
Professor Elizabeth Baker

Continued on next page.

John Hanson^Δ
Learning Teaching and Curriculum
Professor Nikki Ashcraft

Kristen Hargis^Δ
Learning Teaching and Curriculum
Professor Lloyd Barrow

Kristen Taylor Hargis^Δ
Learning Teaching and Curriculum
Professor Lloyd Barrow

Lauren Elise Harmon^Δ
Learning Teaching and Curriculum
Professor Zandra de Araujo

Shelby Harper^Δ
Learning Teaching and Curriculum
Professor Elizabeth Baker

Daniel Harris^Δ
Educational and Counseling Psychology
Professor Brandon Orr

Andrea Hart^Δ
Learning Teaching and Curriculum
Professor Lloyd Barrow

Katherine Haxel^Δ
Learning Teaching and Curriculum
Professor Lenny Sanchez

Wade Tyler Hayes
Educational and Counseling Psychology
Professor Brandon Orr

Anita Hayes-Birt^Δ
Educational Leadership and Policy
Analysis
Professor David Belcher

Stephanie Henke^Δ
Learning Teaching and Curriculum
Professor Sam Otten

Kelsie Kate Henry^Δ
Learning Teaching and Curriculum
Professor Lloyd Barrow

Ryan Patrick Henry
Educational and Counseling Psychology
Professor Brandon Orr

Lauren Hermann^Δ
Educational Leadership and Policy
Analysis
Professor Carol Maher
Professor David Belcher

Samuel Hester^Δ
Learning Teaching and Curriculum
Professor Troy Sadler

Kyle Hesterman^Δ
Educational and Counseling Psychology
Professor Brandon Orr

Chante'I Joan Hill^Δ
Learning Teaching and Curriculum
Professor Zandra de Araujo

Matthew Hoch^Δ
Educational and Counseling Psychology
Professor Brandon Orr

Anna Kate Horine
Learning Teaching and Curriculum
Professor Kathleen Unrath

Lora Hounsom^Δ
Information Science and Learning
Technologies
Professor Aimee Klimczak

Professor Julie Caplow

Rachel Howard^Δ
Learning Teaching and Curriculum
Professor Elizabeth Baker

Colleen Hunter^Δ
Learning Teaching and Curriculum
Professor Tony Castro

Quintin Imler^Δ
Learning Teaching and Curriculum
Professor Zandra Araujo

Jane Jackson^Δ
Learning Teaching and Curriculum
Professor Troy Sadler

James Janes^Δ
Learning Teaching and Curriculum
Professor Tony Castro

Sarah Beth Jansen
Special Education
Professor Rebecca McCatbren

Amy Johanning^Δ
Learning Teaching and Curriculum
Professor Carol Gilles

Caitlyn Johnson^Δ
Learning Teaching and Curriculum
Professor Zandra de Araujo

Caitlyn Victoria Johnson^Δ
Learning Teaching and Curriculum
Professor Zandra de Araujo

Jeremiah Johnson^Δ
Educational and Counseling Psychology
Professor Richard McGuire

Jessica Johnson^Δ
Learning Teaching and Curriculum
Professor Lenny Sanchez

Kayleigh Elizabeth Johnson
Special Education
Professor Jena Randolph

Erin Jones
Information Science and Learning
Technologies
Professor Aimee Klimczak

Kelsey Kaelin^Δ
Learning Teaching and Curriculum
Professor Nancy Knipping

Jessica Kendall
Learning Teaching and Curriculum
Professor Carol Gilles

Kristi Lyn Kilburn
Learning Teaching and Curriculum
Professor Lenny Sanchez

Erin King^Δ
Educational Leadership and Policy
Analysis
Professor David Belcher

Professor Carol Maher

Rachael Klebolt^Δ
Learning Teaching and Curriculum
Professor Elizabeth Baker

Lawrence Knowles III^Δ
Learning Teaching and Curriculum
Professor Rachel Pinnow

Mallory Krueger^Δ
Learning Teaching and Curriculum
Professor Zandra De Araujo

Kevin Krumrey^Δ
Learning Teaching and Curriculum
Professor Tony Castro

Bridget Landgraf^Δ
Learning Teaching and Curriculum
Professor Zandra de Araujo

Mary Langworthy
Educational and Counseling Psychology
Professor Lisa Flores

Taylor Mae Lawson^Δ
Learning Teaching and Curriculum
Professor Troy Sadler

Hsin-Yi Lee
Educational and Counseling Psychology
Professor Puncy Heppner

Betsy Lehman^Δ
Learning Teaching and Curriculum
Professor Nancy Knipping

Kelly Lepper^Δ
Special Education
Professor Rebecca McCatbren

Victoria Lewensky^Δ
Learning Teaching and Curriculum
Professor Melissa Stormont

Ying-ling Liu
Educational and Counseling Psychology
Professor Kenneth Wang

Brian Lomax^Δ
Educational and Counseling Psychology
Professor Brandon Orr

Erika Elizabeth Lorenz
Educational and Counseling Psychology
Professor Brandon Orr

Patricia Mantia^Δ
Special Education
Professor Rebecca McCatbren

Emily Mantle^Δ
Learning Teaching and Curriculum
Professor Sam Otten

Shaylee Marr^Δ
Educational and Counseling Psychology
Professor Brandon Orr

Eric James Martin
Information Science and Learning
Technologies
Professor Aimee Klimczak

Casey Renee Matthes^Δ
Learning Teaching and Curriculum
Professor Melissa Stormont

Katilin McElfresh^Δ
Educational Leadership and Policy
Analysis
Professor David Belcher

Professor Carol Maher

Erin McHargue^Δ
Learning Teaching and Curriculum
Professor Elizabeth Baker

Katelyn McMahill^Δ
Special Education
Professor Timothy Lewis

Lyda J McMurray
Information Science and Learning
Technologies
Professor Aimee Klimczak

Rebecca Mesecher^Δ
Learning Teaching and Curriculum
Professor Lloyd Barrow

Joseph Messina^Δ
Learning Teaching and Curriculum
Professor Troy Sadler

Scott Meyer^Δ
Educational and Counseling Psychology
Professor Richard McGuire

Bailey Millington^Δ
Learning Teaching and Curriculum
Professor Nancy Knipping

Lisa Moldafsky^Δ
Educational Leadership and Policy
Analysis
Professor Juanita Simmons

Professor Carol Maher

Jason Wayne Moore
Educational and Counseling Psychology
Professor Brandon Orr

Danielle Morrow^Δ
Educational Leadership and Policy
Analysis
Professor David Belcher

Kyle Morse^Δ
Learning Teaching and Curriculum
Professor Troy Sadler

Alexandra Muckerman^Δ
Learning Teaching and Curriculum
Professor Elizabeth Baker

Alexandra Camille Muckerman^Δ
Learning Teaching and Curriculum
Professor Elizabeth Baker

Alissa Rose Murphy
Learning Teaching and Curriculum
Professor Nikki Ashcraft

Continued on next page.

Marie Christine Naumann^Δ
Learning Teaching and Curriculum
Professor Melissa Stormont

Julie Newmark^Δ
Learning Teaching and Curriculum
Professor Lloyd Barrow

Clark Oelrichs
Educational and Counseling Psychology
Professor Lisa Flores

Patrick O'Malley
Learning Teaching and Curriculum
Professor Nikki Ashcraft

Steven O'Neill^Δ
Information Science and Learning Technologies
Professor Aimee Klimczak

Angela Orf^Δ
Career and Technical Education
Professor Anthony Barbis

Zachary Osborne^Δ
Educational and Counseling Psychology
Professor Brandon Orr

Lindsay Overton
Learning Teaching and Curriculum
Professor Elizabeth Baker

Michelle Amber Overton^Δ
Learning Teaching and Curriculum
Professor Nancy Knipping

Nichoal Parmley^Δ
Learning Teaching and Curriculum
Professor Troy Sadler

Jessica Payne^Δ
Learning Teaching and Curriculum
Professor Nancy Knipping

Russell Pearcy^Δ
Learning Teaching and Curriculum
Professor Carol Gilles

Russell Patrick Pearcy^Δ
Learning Teaching and Curriculum
Professor Carol Gilles

Ann Marie Peters
Learning Teaching and Curriculum
Professor Nikki Ashcraft

Matthew Steven Porter
Educational and Counseling Psychology
Professor Richard McGuire

William Pearson Powell Jr.
Educational and Counseling Psychology
Professor Brandon Orr

Tyler Prazma^Δ
Educational and Counseling Psychology
Professor Brandon Orr

Jessica Kay Pulis Branstetter
Educational and Counseling Psychology
Professor Brandon Orr

Laura Quesal^Δ
Learning Teaching and Curriculum
Professor Barbara Reys

Lisa Reeves^Δ
Career and Technical Education
Professor Anthony Barbis

Drew Reid^Δ
Special Education
Professor Rebecca McCatbren

Connie Reynolds^Δ
Educational Leadership and Policy Analysis
Professor Carol Maber

Sarah Victoria Rezabek^Δ
Learning Teaching and Curriculum
Professor Elizabeth Baker

April Nicole Richards
Educational and Counseling Psychology
Professor Brandon Orr

Austin Scott Rickels
Educational and Counseling Psychology
Professor Brandon Orr

Mary Ridenhour^Δ
Learning Teaching and Curriculum
Professor Carol Gilles

Reian Roberts^Δ
Learning Teaching and Curriculum
Professor Troy Sadler

Jason Robinson
Learning Teaching and Curriculum
Professor Nikki Ashcraft

Morgan Rodecap^Δ
Learning Teaching and Curriculum
Professor Sam Otten

Amanda Rodrigues^Δ
Educational and Counseling Psychology
Professor Brandon Orr

Clay Leslie Rogers
Educational and Counseling Psychology
Professor Brandon Orr

Louie Allen Rolko
Educational and Counseling Psychology
Professor Brandon Orr

Stephanie Rome^Δ
Educational Leadership and Policy Analysis
Professor Chris Belcher

Adam Timothy Ryan^Δ
Learning Teaching and Curriculum
Professor Anthony Barbis

Hope Ryan^Δ
Learning Teaching and Curriculum
Professor Nancy Knipping

Mckenzie Sauerwein^Δ
Educational and Counseling Psychology
Professor Brandon Orr

Andrew Allen Schinsky
Learning Teaching and Curriculum
Professor Rachel Pinnow

Steven Schlarman^Δ
Learning Teaching and Curriculum
Professor Troy Sadler
Professor Patricia Friedrichsen

Sidney Schneider^Δ
Learning Teaching and Curriculum
Professor Nancy Knipping

Cheryl A Schofield
Educational and Counseling Psychology
Professor Brandon Orr

Sarah Schondelmeyer^Δ
Learning Teaching and Curriculum
Professor Zandra de Araujo

Nikki Schwartz^Δ
Information Science and Learning Technologies
Professor Aimee Klimczak

Anna Scott^Δ
Learning Teaching and Curriculum
Professor Marcelle Siegel

Lauren Scott^Δ
Learning Teaching and Curriculum
Professor Nancy Knipping

Riotta M Scott
Career and Technical Education
Professor Anthony Barbis

Amy Denise Scroggins
Information Science and Learning Technologies
Professor Aimee Klimczak

Christina Sheffel^Δ
Learning Teaching and Curriculum
Professor Zandra de Araujo

Emily Shelton^Δ
Learning Teaching and Curriculum
Professor Zandra de Araujo

Monica Shih^Δ
Learning Teaching and Curriculum
Professor Nancy Knipping

Heather Nicole Slansky Johnson^Δ
Learning Teaching and Curriculum
Professor Carol Gilles

Blair Hillman Smith
Learning Teaching and Curriculum
Professor James Baumann

Matthew Smith^Δ
Learning Teaching and Curriculum
Professor Tony Castro

Michael Smith^Δ
Information Science and Learning Technologies
Professor Aimee Klimczak

Shannen Smith^Δ
Learning Teaching and Curriculum
Professor Elizabeth Baker

Jeremy Marshall Snow
Learning Teaching and Curriculum
Professor Nikki Ashcraft

Martin Rasheed Solomon
Educational and Counseling Psychology
Professor Brandon Orr

Laura Steeno^Δ
Learning Teaching and Curriculum
Professor Zandra de Araujo

Shelby Stephens^Δ
Learning Teaching and Curriculum
Professor Lloyd Barrow

Shelby Lynn Stirling
Learning Teaching and Curriculum
Professor Maria Zapata

Margi Lynn Stroh
Educational and Counseling Psychology
Professor Brandon Orr

Jordan Swaim^Δ
Learning Teaching and Curriculum
Professor Troy Sadler

Clayton Taff^Δ
Learning Teaching and Curriculum
Professor Carol Gilles

Tracie Talerico
Learning Teaching and Curriculum
Professor Elizabeth Baker

Frank Brian Talerico Jr.
Learning Teaching and Curriculum
Professor Tony Castro

Rachel Taping^Δ
Learning, Teaching and Curriculum
Professor Tony Castro

Ashley Dawn Taylor
Learning Teaching and Curriculum
Professor Kathleen Unrath

Meghan Taylor^Δ
Educational and Counseling Psychology
Professor Sandra Sites

Christina Thebeau^Δ
Learning Teaching and Curriculum
Professor Troy Sadler

Brendon Thiry^Δ
Learning Teaching and Curriculum
Professor Sam Otten

Tommy Thomas^Δ
Educational, School, and Counseling Psychology
Professor Richard McGuire

Jaclyn Thomure^Δ
Learning Teaching and Curriculum
Professor Lloyd Barrow

Carol Michelle Thornhill
Information Science and Learning Technologies
Professor Aimee Klimczak

Amanda Toepke^Δ
Educational Leadership and Policy Analysis
Professor David Belcher

Continued on next page.

Lynn Tschiggfrie^Δ
Learning Teaching and Curriculum
Professor Nikki Asbcraft

Nicole Tuter^Δ
Learning Teaching and Curriculum
Professor Carol Gilles

Lauren Upton^Δ
Learning Teaching and Curriculum
Professor Lloyd Barrow

Michael Viviano^Δ
Learning Teaching and Curriculum
Professor Sam Otten

Scott Vonder Bruegge^Δ
Information Science and Learning
Technologies
Professor Aimee Klimczak

Ashley Walls^Δ
Learning Teaching and Curriculum
Professor Sam Otten

Catherine Weller^Δ
Learning Teaching and Curriculum
Professor Nancy Knipping

Alexandria Wendell^Δ
Learning Teaching and Curriculum
Professor Carol Gilles

Kelly Wendt^Δ
Learning Teaching and Curriculum
Professor Carol Gilles

Jacquelyn Castine Wesley
Special Education
Professor Rebecca McCatbren

Claire West^Δ
Learning Teaching and Curriculum
Professor Nancy Knipping

Laurie West^Δ
Special Education
Professor Rebecca McCatbren

Courtney Whited^Δ
Educational and Counseling Psychology
Professor Brandon Orr

Eric Whited^Δ
Educational and Counseling Psychology
Professor Brandon Orr

Kelsey Whittet^Δ
Learning Teaching and Curriculum
Professor Zandra de Araujo

Jaime Wieberg^Δ
Learning Teaching and Curriculum
Professor Carol Gilles

Seth Alan Wilber
Educational and Counseling Psychology
Professor Brandon Orr

Becky Dian Williams
Career and Technical Education
Professor Anthony Barbis

Jami Williams^Δ
Learning Teaching and Curriculum
Professor Nancy Knipping

Kyle Allen Williams
Educational and Counseling Psychology
Professor Brandon Orr

David Wills
Learning Teaching and Curriculum
Professor Nikki Asbcraft

Paula Corinne Winkler
Information Science and Learning
Technologies
Professor Aimee Klimczak

Maria Younghans
Learning Teaching and Curriculum
Professor Lenny Sanchez

Amy Zahakaylo^Δ
Learning Teaching and Curriculum
Professor Lenny Sanchez

Karl Zubeck^Δ
Educational and Counseling Psychology
Professor Brandon Orr

MASTER OF ENGINEERING

^ΔDenotes Summer 2015 graduate

Sami Alrajab^Δ
Industrial Engineering
Professor Chng-Hsiung Chang

Yuxiang Chen
Engineering
Professor Jodette Lenser

Revanth Varma Datla
Engineering
Professor Yi Shang

Fanglin Deng
Engineering
Professor James Keller

Puneet Gaddam^Δ
Engineering
Professor Yi Shang

Sergio Garcia^Δ
Industrial & Manufacturing System
Engineering
Professor Luis Occena

Xiao Kang
Engineering
Professor Kannappan Palaniappan

Greg Kanuckel^Δ
Engineering
Professor Gary Solbrekken

Supanat Krairiksh
Engineering
Professor James Keller

Sai Charan Macharla^Δ
Engineering
Professor James Keller

David Robert Myers
Engineering
Professor John Gabl

Hareesh Kumar Rapolu^Δ
Engineering
Professor James Keller

Farooq Shaik
Engineering
Professor James Keller

Prabhu Karthik Chowdary
Vallabhaneni
Engineering
Professor Yi Shang

MASTER OF FINE ARTS

Shirley A Boudreaux
Art
 Professor Josephine Stealey
 Professor James Calvin

Anna Roe Cranor
Art
 Professor Josephine Stealey

MASTER OF HEALTH ADMINISTRATION

^ΔDenotes Summer 2015 graduate

Lesli Theresa Briggs
Health Administration
 Professor Win Phillips

Patricia Ann Cyrus
Health Administration
 Professor Brian Hensel

Marvin Lewis Foster Jr.
Health Administration
 Professor Sue Boren

Leah Kathryn Freeze
Health Administration
 Professor Sue Boren

Lori Ann Garrett
Health Administration
 Professor David Moxley

Craig Lamont Glover
Health Administration
 Professor Robert Degraaff

Melissa Griggs
Health Administration
 Professor David Moxley

Jonathan William Heidt
Health Administration
 Professor Sue Boren

Kyle R. Holley
Health Administration
 Professor Win Phillips

Sheila Kaye Langlotz
Health Administration
 Professor David Moxley

Andrew H Lovewell
Health Administration
 Professor Min Soon Kim

Marcy L Maddox
Health Administration
 Professor Min Soon Kim

Christine Ione McQuay
Health Administration
 Professor Patricia Alfairreet

Jane Elisabeth Metcalf
Health Administration
 Professor Winfred Phillips

Kelly Mitchell
Health Administration
 Professor David Moxley

Matthew D Morgan
Health Administration
 Professor David Moxley

Theresa L Murphy
Health Administration
 Professor Jeannette Jackson Thompson

Vivek Punjabi
Health Administration
 Professor Julie Kapp

Kyle Ream
Health Administration
 Professor David Moxley

Saif Rehman
Health Administration
 Professor Naresh Khatri
 Professor David Moxley

Diana E. Rickard
Health Administration
 Professor Sue Boren

Tyler Lawrence Schultz
Health Administration
 Professor David Moxley

Christopher Schulze
Health Administration
 Professor David Moxley

Amanda Selby^Δ
Master of Health Administration
 Professor Naresh Khatri

Christina Slempp
Health Administration
 Professor David Moxley

Timothy James Sweet
Health Administration
 Professor David Moxley

Rohit Toteja
Health Administration
 Professor Sue Boren

MASTER OF HEALTH SCIENCE

Jacob Anthony Banas
Diagnostic Medical Ultrasound
 Professor Moses Hdeib

Lambert Wayne Eller
Diagnostic Medical Ultrasound
 Professor Moses Hdeib

Tiffany Marie Floyd
Diagnostic Medical Ultrasound
 Professor Moses Hdeib

Vanessa Renee Pierson
Diagnostic Medical Ultrasound
 Professor Moses Hdeib

Samantha Nicole Simpson
Diagnostic Medical Ultrasound
 Professor Moses Hdeib

MASTER OF LAWS

Princess Dugbo
Dispute Resolution
Professor Paul Ladeboff

Sung-Wan Kim
Dispute Resolution
Professor Paul Ladeboff

MASTER OF MUSIC

Julie Ann McGinnity
Music
Professor Ann Harvell

MASTER OF OCCUPATIONAL THERAPY

^ΔDenotes Summer 2015 graduate

Ellen Campbell^Δ
Occupational Therapy
Professor Giulianne Krug

MASTER OF PUBLIC AFFAIRS

^ΔDenotes Summer 2015 graduate

Melissa Acton
Public Affairs
Professor Charles Menifield

Denise Box^Δ
Public Affairs
Professor Kathleen Miller

Erica Bruns^Δ
Public Affairs
Professor Kathleen Miller

Zachariah Gene Buckler
Public Affairs
Professor Charles Menifield

Brian Edward Crouse
Public Affairs
Professor Charles Menifield

Casey Bruce Hanson
Public Affairs
Professor Charles Menifield

Tiffany Jones^Δ
Public Affairs
Professor Michelle Teti

Kyle Juvers^Δ
Public Affairs
Professor Kathleen Miller

Michelle Stephens Kemp
Public Affairs
Professor Kathleen Miller

Courtney Paige Kohler
Public Affairs
Professor Charles Menifield

Caroline Stroud Lawson
Public Affairs
Professor Kathleen Miller

Amy Luebbers
Public Affairs
Professor Kathleen Miller

Jarad Michael Perry
Public Affairs
Professor Kathleen Miller

Anne Reeder^Δ
Public Affairs
Professor Kathleen Miller

MASTER OF PUBLIC HEALTH

^ΔDenotes Summer 2015 graduate

Johanna Carolina Bailey
Public Health
Professor Chada Reddy

Heather Boehmer^Δ
Public Health
Professor Loren Schultz

Cameron Simms Buckman
Public Health
Professor Lise Saffran

Angela Gail Bunge
Public Health
Professor Lise Saffran

Virginia D Chadwick
Public Health
Professor Lise Saffran

Maria Khalid Cheema
Public Health
Professor Lise Saffran

Abdelmoneim Abubaker Elfagir
Public Health
Professor Chada Reddy

Darrick Allen Farr
Public Health
Professor Wilson Majee

Rachel Elizabeth Fugate
Public Health
Professor Deborah Hume

Amarinder Singh Grewal
Public Health
Professor William Majee

Amanda Christine Grodie
Public Health

Lani Rae Gusman
Public Health
Professor Chada Reddy

Somia Mubarak Ahmed Hamed
Public Health
Professor Lynelle Phillips

Sawsan Haqi Hasan
Public Health
Professor Deborah Hume

Christina Heinen
Public Health
Professor Lise Saffran

Angela Ho
Public Health
Professor Lynelle Phillips

Tiffany Jones^Δ
Public Health
Professor Lise Saffran

Lauren Johnson^Δ
Public Health
Professor Chada Reddy

Margaret Kauffman
Public Health
Professor Deborah Hume

Kristine Marie Malotte
Public Health
Professor Lynelle Phillips

Alicia Nelson
Public Health
Professor Lise Saffran

Kayla Deanne Otteson
Public Health
Professor Deborah Hume
Professor Lynelle Phillips

Safiullah Rahimullah
Public Health
Professor Lise Saffran

Nivedita Ravichandran
Public Health
Professor Patrick Pitbua

Ashley Ann Ray
Public Health
Professor Lise Saffran

Amanda Richmond
Public Health
Professor Lise Saffran

Tarunjot Sethi^Δ
Public Health
Professor Deborah Hume

Abby St. George
Public Health
Professor Lynelle Phillips

Steven Starr^Δ
Public Health
Professor Lise Saffran
Professor Lynelle Phillips

Jennifer Lee Michael Stetler
Public Health
Professor Lise Saffran

Sarah Christine Studyvin
Public Health
Professor Michael Hosokawa

Iran Sadat Tabatabaieian
Public Health
Professor Lynette Philips

Pamela K. Thorne
Public Health
Professor Deborah Hume

Nuha Khalifa Wareg
Public Health
Professor Lise Saffran

Rauta Aver Yakubu
Public Health
Professor Deborah Hume

Adam Zino^Δ
Public Health
Professor Brenda Beerntsen

MASTER OF SCIENCE

^ΔDenotes Summer 2015 graduate

Jillian Mae Abel
Animal Science
Professor David Patterson

Sebahattin Acikgoz^Δ
Natural Resources
Professor Stephen H. Anderson
Professor Manjula

Carin Ahner
Biomedical Sciences
Professor James Cook

Eda Akdemir^Δ
Soil, Environmental and Atmospheric
Sciences
Professor Stephen H. Anderson

Andrew Alba^Δ
Fisheries and Wildlife Sciences
Professor Dylan Kesler
Professor Trista Strauch

Cody Allard^Δ
Mechanical and Aerospace Engineering
Professor Ming Xin

Zahraa Al-Milaji
Computer Science
Professor Filiz Bunyak

Zainab Al-Taie
Computer Science
Professor Dong Xu
Professor Trupti

Zachary Paul Anderson
Parks, Recreation and Tourism
Professor David Vaught

Del Warren Appleby
Agricultural Education
Professor Tracy Kitchel

Josef Batek
Plant, Insect and Microbial Sciences
Professor Gary Stacey

Katlin Ray Beaven
Forestry
Professor Jason Hubbard

Harish Bezawada^Δ
Mechanical and Aerospace Engineering
Professor El-Gizarwy A. Sherif

Continued on next page.

Brianne Elizabeth Bishop

Animal Science
Professor David Patterson

Theodore Glenn Blumenschein

Natural Resources
Professor Peter Motavalli
Professor Kelly Nelson

Joseph Daniel Bolte

Plant, Insect and Microbial Sciences
Professor Reid Smeda

Krishna Chaitanya Bommisetty

Mechanical and Aerospace Engineering
Professor Sanjeev Khanna

Theodore Chambers Bowman

Health Informatics and Bioinformatics
Professor David Moxley

Katherine Maye Brewster

Textile and Apparel Management
Professor Pamela Norum

Lesli Theresa Briggs

Health Informatics and Bioinformatics
Professor Win Phillips

Katrina Burch

Geology
Professor Eric Sandvol

Erin Burton^Δ

Biomedical Sciences
Professor Chuck Wiedmeyer

Matthew Kale Caldwell

Plant, Insect and Microbial Sciences
Professor Kelly Nelson

Siyu Cao^Δ

Chemical Engineering
Professor Matthew Berards

Eric Gustavo Carvalho da Mota

Agricultural and Applied Economics
Professor Fabio Chaddad

Eric Nathan Carver

Nuclear Engineering
Professor John Gabl
Professor Naz Islam

Gokul Chagalamarri Nippani

Computer Engineering
Professor Naz Islam

Janith Chandrasoma^Δ

Soil, Environmental and Atmospheric Sciences
Professor Ranjith Udawatta
Professor Stephen Anderson

Yushan Chang

Electrical Engineering
Professor Mahmoud Almasri

David Chappell

Plant, Insect and Microbial Sciences
Professor Anne McKendry

Chen Chen^Δ

Electrical Engineering
Professor Mahmoud Almasri

Martin Christopher^Δ

Personal Financial Planning
Professor Deanna Sharpe

Nicholas Colona^Δ

Biological Engineering
Professor Sbramik Sengupta

Matthew Cook

Computer Engineering
Professor Alina Zare

Marcus Jeremy Crim

Biomedical Sciences
Professor Craig Franklin

Longhai Cui

Computer Science
Professor Prasad Calyam

Andrew Kimberlin Curtis

Animal Science
Professor Donald Spiers

Clemencia D'Ercole-Gonzalez

Personal Financial Planning
Professor Deanna Sharpe

Heidi Davis^Δ

Plant, Insect and Microbial Sciences
Professor Reid Smeda

Wei Du^Δ

Industrial Engineering
Professor Kim Jung

Xinwei Du

Computer Science
Professor Grant Scott

Parinaz Emami^Δ

Chemical Engineering
Professor Patrick Pinhero

Jackie Dee Faber

Nursing
Professor Lori Popejoy

Sandra Jean Filla

Nursing
Professor Lori Popejoy

Ke Gao

Electrical Engineering
Professor Kannappan Palaniappan

Ahmed Gatea^Δ

Animal Science
Professor Michael Smith

Joseph Gilliam^Δ

Civil Engineering
Professor Brent Rosenblad

Arndt Gossel^Δ

Biological Engineering
Professor Allen Thompson

Hannah Groom^Δ

Physics
Professor Angela Speck

Ruidong Gu

Computer Engineering
Professor Michela Becchi

Zehra Gulseven^Δ

Human Development and Family Studies
Professor Gustavo Carlo

Wenbo Guo

Computer Science
Professor Yi Shang

Zhujin Guo^Δ

Applied Mathematics
Professor Stamatis Dostoglou

Maria Haag^Δ

Animal Science
Professor Robert Schnabel
Professor Jeremy Taylor

William Haag IV^Δ

Parks, Recreation and Tourism
Professor Mark Morgan

Dylan Leslie Hamlin

Animal Science
Professor William Sexten
Professor Monty Kerley

Rachel Kate Hangley

Agricultural and Applied Economics
Professor Fabio Chaddad
Professor Michael

Sarah Hansen^Δ

Veterinary Pathobiology
Professor Jeffrey Bryan
Professor James

Nabil Fawzi Hasan

Civil Engineering
Professor John Bowders Jr.

Alexander Heese^Δ

Biomedical Sciences
Professor Frank Booth

Jessica Helsinger^Δ

Agricultural Education
Professor Tracy Kitchel

Jackson Herbst

Electrical Engineering
Professor John Gabl

Katherine Higgins

Agricultural and Applied Economics
Professor Corinne Valdivia

Evan Blaise Hill

Fisheries and Wildlife Sciences
Professor Elisabeth Webb

Tina M. Hilmas

Health Informatics
Professor Sue Boren

Adam Hirsch

Soil, Environmental and Atmospheric Sciences
Professor Patrick Market

Yun Ho

Natural Resources
Professor Mark Morgan

John Hofheins^Δ

Biomedical Sciences
Professor Frank Booth

Lynne Hooper^Δ

Natural Resources
Professor Jason Hubbard

Gregory Warren Hosmer

Natural Resources
Professor Jason Hubbard

Hooman Hosseini^Δ

Chemical Engineering
Professor Galen Suppes

Pei Hu

Computer Science
Professor Jianlin Cheng

Yibin Huang

Computer Engineering
Professor Zhibai He

Nicholas Hudson^Δ

Electrical and Computer Engineering
Professor Michael Devaney

Christine Hurley

Animal Science
Professor Kevin Wells

Abu Rafi Mohammad Iasir

Nuclear Engineering
Professor Gary Solbrekken

Halimat Ipaye^Δ

Textile and Apparel Management
Professor Jean Parsons

Sajid Iqbal^Δ

Civil Engineering
Professor J. Erik Loehr

Calvin Douglas Irwin

Biological Engineering
Professor Matthew Bernards

Hamidreza Jahandar^Δ

Biological Engineering
Professor Trent Guess

Ibrahem Hashim Mahmood

Computer Engineering
Professor Mahmoud Almasri

Shuhui Jia

Food Science
Professor Andrew Clarke

Chengyu Jiang^Δ

Chemical Engineering
Professor Matthew Bernards

Adam Jobe^Δ

Food Science
Professor James Groves

Ralph Wade Johnson

Natural Resources
Professor Anthony Lupo

Continued on next page.

<p>Frank Earl Johnson II Natural Resources Professor Peter Motavalli</p> <p>Jesse Bryce Jurgenson Personal Financial Planning Professor Deanna Sharpe</p> <p>Zuheng Kang Mechanical and Aerospace Engineering Professor Roger Fales</p> <p>Rajani Kanmanthareddy Computer Science Professor Jianlin Cheng</p> <p>Charles Keating^Δ Forestry Professor David Larsen</p> <p>Emily Kerley Parks, Recreation and Tourism Professor Jennifer Upab</p> <p>Nakul Khadilkar^Δ Electrical Engineering Professor Justin Legarsky</p> <p>Anna Andreevna Klass Chemistry Professor Jason Cooley</p> <p>Mark Daniel Kloeppe Natural Resources Professor Grace Yan</p> <p>Jessica Knapp^Δ Biomedical Sciences Professor James Tomlinson</p> <p>Seth Joseph Kurtenbach Computer Science Professor William Harrison</p> <p>Ebony Nicole Kurtz Nursing Professor Laura Kuensting</p> <p>Yifan Li Mechanical and Aerospace Engineering Professor Yuyi Lin</p> <p>Zhong Li^Δ Computer Science Professor Ye Duan</p> <p>Eric Duffin Lindsey Civil Engineering Professor John Bowders Jr.</p> <p>Dahai Liu Computer Science Professor Ye Duan</p> <p>Kimm Christine Long Nursing Professor Lori Popejoy</p> <p>Yun Lou Food Science Professor Seongbee Cho</p> <p>Andrew H Lovewell Health Informatics and Bioinformatics Professor MinSoon Kim</p>	<p>Leslie Kathryn Lueckenhoff Fisheries and Wildlife Sciences Professor Amanda Rosenberger</p> <p>Mallory Marie Lumpe Natural Resources Professor Neil Fox</p> <p>Abby Lunneen^Δ Nursing Professor Laura Kuensting</p> <p>Mengxuan Ma Electrical Engineering Professor Harry Tyrer</p> <p>Calvin Maginel III^Δ Forestry Professor Benjamin Knapp Professor Rose-Marie Muzika</p> <p>Mohamadamin Makarem^Δ Chemical Engineering Professor Patrick Pinbero</p> <p>Stephen Mann Sr. Natural Resources Professor Michael Gold</p> <p>Kira Marshall^Δ Animal Science Professor Rocio Rivera</p> <p>Roxana Martinez Campuzano Mechanical and Aerospace Engineering Professor J. K. Chen Professor Guoliang Huang</p> <p>Marina Materikina Industrial Engineering Professor Ronald McGarvey</p> <p>Cassidy Coleman Mathews Civil Engineering Professor John Bowders Jr.</p> <p>Alessandro Robert Mazza Physics Professor Paul Miceli Professor Haskell Taub</p> <p>Yoanna McDowell Psychology Professor Kenneth Sher</p> <p>Jeffrey McHugh Plant, Insect and Microbial Sciences Professor Felix Fritschi</p> <p>Christine Ione McQuay Health Informatics and Bioinformatics Professor Patricia Alfairret</p> <p>Nicholas Mertz Animal Science Professor Justin Sexten</p> <p>Renée Claudette Miller Rural Sociology Professor Mary Grigsby</p> <p>Lucy Margaret Mills Agricultural and Applied Economics Professor Randall Westgren</p>	<p>Kelly Mitchell Health Informatics and Bioinformatics Professor David Moxley</p> <p>Meagan Denise Montgomery Fisheries and Wildlife Sciences Professor David Galat</p> <p>Rebecca Louise Mott Agricultural Education Professor Jon Simonsen</p> <p>Fadi Muheidat Computer Engineering Professor Harry Tyrer Jr.</p> <p>Carol Murphy^Δ Nursing Professor Gina Oliver</p> <p>Satya Ramoji Rao Nandigam Electrical Engineering Professor Justin Legarsky</p> <p>Nguyen Nguyen^Δ Industrial Engineering Professor Timothy Middelkoop</p> <p>Katlyn Niederecker^Δ Animal Science Professor Allison Meyer</p> <p>Gregory Ormsby Mori Natural Resources Professor Shibu Jose Professor Michael Gold</p> <p>Seyedmehdi Orouji Electrical Engineering Professor Kevin Gillis</p> <p>Payal Sanjay Patel Health Informatics and Bioinformatics Professor Mihail Popescu</p> <p>Avinash Pathak Electrical Engineering Professor Shubbra Gangopadhyay Professor Peter Cornish</p> <p>Genesha Pender Personal Financial Planning Professor Deanna Sharpe</p> <p>Michael Phinney^Δ Computer Science Professor Chi-Ren Shyu</p> <p>Jenifer Slade Pilz Rural Sociology Professor Stephen Jeanetta Professor Judith Stallmann</p> <p>Sagar Pokhrel Nuclear Engineering Professor Sudarshan Loyalka</p> <p>Brie Quick^Δ Animal Science Professor Timothy Safranski</p> <p>Ahsan Rajper^Δ Soil, Environmental and Atmospheric Sciences Professor Ranjith Udawatta Professor Robert Kremer</p>	<p>Aayush Regmi Physics Professor Deepak Singh</p> <p>Jodie M Reisner Soil, Environmental and Atmospheric Sciences Professor Randy Miles Professor Robert Kremer</p> <p>Diana E. Rickard Health Informatics and Bioinformatics Professor Sue Boren</p> <p>James Michael Ruman Nursing Professor Amy Vogelsmeier</p> <p>Handan Sahin^Δ Natural Resources Professor Stephen H. Anderson</p> <p>Kommidi Lakshmi Sai Ram Computer Science Professor Jianlin Cheng</p> <p>Mary Saulters^Δ Rural Sociology Professor Mary Hendrickson</p> <p>Christopher Schulze Health Informatics and Bioinformatics Professor David Moxley</p> <p>Jacob Schwoerer Natural Resources Professor Craig Paukert</p> <p>Kaleb Sellers^Δ Pathology Professor Casey Holliday</p> <p>Abhishek Shah Computer Science Professor Wenjun Zeng</p> <p>Tiffany Ann Shannon Animal Science Professor David Ledoux</p> <p>Shengyang Shi Agricultural and Applied Economics Professor Harvey S. James Jr.</p> <p>Zhongyi Shi^Δ Chemical Engineering Professor Baolin Deng</p> <p>Tyler Shinn^Δ Mechanical and Aerospace Engineering Professor Roger Fales</p> <p>Christina Slempp Health Informatics and Bioinformatics Professor David Moxley</p> <p>Nicholas Smith^Δ Electrical Engineering Professor Guilherme DeSouza</p> <p>Peter Andrew Speck Soil, Environmental and Atmospheric Sciences Professor Bobumil Svoma</p> <p><i>Continued on next page.</i></p>
---	--	---	--

Elizabeth Knight Spiegel

Natural Resources
Professor Jason Hubbard

Dustin James Steller

Parks, Recreation and Tourism
Professor Nick Watanabe

Maximilian Ignatius Storms

Civil Engineering
Professor Maria Fidalgo

Kevin Sweeney

Nuclear Engineering
Professor John Gabl

Yan Tang

Electrical Engineering
Professor Zhibai He

Yunhao Tang

Computer Science
Professor Jianlin Cheng

Benjamin Tappmeyer^Δ

Civil Engineering
Professor Hani Salim

Chevise Thomas^Δ

Animal Science
Professor William Lamberson
Professor Tumen

Dexter Tomczak^Δ

Animal Science
Professor William Sexten

Xin Tong

Medical Pharmacology and Physiology
Professor Luis Martinez-Lemus

Rohit Toteja

Health Informatics and Bioinformatics
Professor Naresh Khatri

Keyden Kriens Turner

Civil Engineering
Professor John Bowders Jr.

Adam Bruce Veteto

Medical Pharmacology and Physiology
Professor Kerry McDonald
Professor Timothy

James Shannon VeVerka

Soil, Environmental and Atmospheric Sciences
Professor Robert Kremer
Professor Ranjith Udawatta

Richard William Wallen

Computer Science
Professor William Harrison

Fangzhou Wang

Chemical Engineering
Professor Deng Baolin

Jiaojiao Wang

Computer Science
Professor Trupti Joshi

Junlin Wang^Δ

Computer Science
Professor Yi Shang

Wenbo Wang

Computer Science
Professor Yi Shang

Xue Wang

Civil Engineering
Professor Zhen Chen

Yujia Wang

Civil Engineering
Professor Kathleen Trauth

Megan Wasielewski^Δ

Food Science
Professor Misha Kwasniewski
Professor Ingolf Gruen

Brian Myck Wayne

Food Science
Professor Misha Kwasniewski

Brianna Webb

Health Informatics and Bioinformatics
Professor David Moxley

Chathuri Sugandhika

Weerasekara
Natural Resources
Professor Shibu Jose

Amy Westhoff^Δ

Health Informatics and Bioinformatics
Professor David Moxley

David Austin Williams

Civil Engineering
Professor John Bowders Jr.

Laura J. Wilsdorf

Animal Science
Professor Matthew Lucy
Professor Rodney

Michael Ray Wilson

Mechanical and Aerospace Engineering
Professor Hongbin Ma

Alaa Mahdi Wli

Mechanical and Aerospace Engineering
Professor Roger Fales

Kristen Elizabeth Wondell

Agricultural Education
Professor Tracy Kitchel
Professor John Tummons

Chu Wu

Plant, Insect and Microbial Sciences
Professor Zhanyuan Zhang

Lingxue Wu

Computer Science
Professor Jeffrey Uhlmann

Tianyu Wu

Civil Engineering
Professor Sarah Orton

Daniel Wynkoop

Health Informatics and Bioinformatics
Professor David Moxley
Professor Laura Verkamp

Boxuan Xie

Mechanical and Aerospace Engineering
Professor Yuyi Lin

Rui Xie

Computer Science
Professor Jianlin Cheng

Tiancheng Xu

Mechanical and Aerospace Engineering
Professor ChungLung Chen

Jialei Yang

Electrical Engineering
Professor James Keller

Bezawit Yirgalem

Health Informatics and Bioinformatics
Professor David Moxley

Jenna Marie Young

Agriculture Education and Leadership
Professor Anna Ball
Professor Tracy Kitchel

Hang Yu

Electrical Engineering
Professor Kannappan Palaniappan

Yuan Yuan

Food Science
Professor Azlin Mustapha

Zuleyha Yuksek

Physics
Professor Silvia G. Bompadre

Chenxing Zhang^Δ

Mechanical and Aerospace Engineering
Professor ChungLung Chen

Miao Zhang^Δ

Computer Science
Professor Ye Duan

Yuxiang Zhang

Computer Science
Professor Jianlin Cheng

Yiming Zhao

Electrical Engineering
Professor Justin Legarsky

Zhiqun Zhao

Electrical Engineering
Professor Zhibai He

Lei Zhou

Industrial Engineering
Professor Luis Occena

Xiao Zhou

Computer Science
Professor Jianlin Cheng

Zhi Zhou

Computer Science
Professor Xinhua Zhuang

Yi Zhu

Biological Engineering
Professor Gerald Meisinger

MASTER OF SOCIAL WORK

^ΔDenotes Summer 2015 graduate

Tiffani Bowman^Δ

Social Work
Professor Linda Hillemann

Whitney N Brooks

Social Work
Professor Colleen Galambos

Juanita Buchanan^Δ

Social Work
Professor Linda Hillemann

Misty Bush^Δ

Social Work
Professor Angela Curl

Nicole Collins^Δ

Social Work
Professor Linda Hilleman

Megan Elizabeth Eidson

Social Work
Professor Kelli Canada

Nathan First^Δ

Social Work
Professor Colleen Galambos

Christine Flores^Δ

Social Work
Professor Carol Snively

Linda S. Green

Social Work
Professor Colleen Galambos

Kelly Elizabeth Gross

Social Work
Professor Colleen Galambos

Jocelyn Gutowski^Δ

Social Work
Professor David Albright

Bradley Hammer^Δ

Social Work
Professor David Albright
Professor Andrea Aderton

Jacqueline Hodson^Δ

Social Work
Professor Andrea Aderton

Natalie Karnowski^Δ

Social Work
Professor Angela Curl

Heather Klemp

Social Work
Professor Aaron Thompson

Jessica Lang^Δ

Social Work
Professor Andrea Aderton
Professor David Albright

Corinne Mann^Δ

Social Work
Professor Kelli Canada

Michaela Much^Δ

Social Work
Professor Rebekah Freese

Betty Peck^Δ

Social Work
Professor Andrea Aderton

Maggie Ann Schulte

Social Work
Professor Carol Snively

Logan Seebach^Δ

Social Work
Professor Andrea Aderton

Anthony Simon^Δ

Social Work
Professor Suzanne Cary

Jerry Spurgeon^Δ

Social Work
Professor David Albright
Professor Andrea Aderton

Daniel Stribling^Δ

Social Work
Professor Carol Snively

Katherine Stuart^Δ

Social Work
Professor Carol Snively

Amanda Sullivan^Δ

Social Work
Professor Aaron Thompson

Katherine Thomure^Δ

Social Work
Professor Andrea Aderton

Addy Van Os Keuls^Δ

Social Work
Professor Carol Snively

Carol Vidacak^Δ

Social Work
Professor Martha Markward

Sarah Elizabeth Wagner

Social Work
Professor Aaron Thompson

Heather Wills^Δ

Social Work
Professor Linda Hillemann

Rochelle Woods^Δ

Social Work
Professor Andrea Aderton

CANDIDATES FOR PROFESSIONAL DEGREES

SCHOOL OF LAW

JURIS DOCTOR

Law

Holly Lynn Knecht
Stacey D. Nicks
Paul Otto Schmanke
Devan M. Scott
Melissa A. Witte
Donell L. Young

CANDIDATES FOR BACCALAUREATE DEGREES

COLLEGE OF AGRICULTURE, FOOD & NATURAL RESOURCES

BACHELOR OF SCIENCE CUM LAUDE - HONORS CERTIFICATE

Animal Sciences
Alexander Nicholas Baron

BACHELOR OF SCIENCE SUMMA CUM LAUDE - HONORS SCHOLAR

Biochemistry
Leonard Christopher Rogers

BACHELOR OF SCIENCE SUMMA CUM LAUDE

**Agricultural Systems
Management**

Alan Novinger Perry
Agricultural Management
Jessie Anne Fowler

Animal Sciences
Brittney Ann Haffner

Biochemistry
Parker Lynnwood Brush
Kathryn Anne Martin

**Hospitality Management
Food and Beverage Management**
Emilie Joyce McSheehy

BACHELOR OF SCIENCE MAGNA CUM LAUDE

Agricultural Economics
William David English

**Agricultural Systems
Management**

Dawn Nicole Gorrell
Jason Ryan Luster

Animal Sciences
Savannah Lee Angell
Abigail Elizabeth Lappe
Miriam Sharon Martin
Courtney Marie Spencer

Biochemistry
Michael Robert Mueller
Brian Jacob Thomas

Food Science and Nutrition
Vivian Sin Yi Hor
Courtney Marie Kleekamp

**Hospitality Management
Conference & Event Planning
Management**

Lauren Wesson Hayden
Plant Sciences

Crop Management
Robert Nicholas Wesslak

BACHELOR OF SCIENCE CUM LAUDE

Agribusiness Management
Derek Lee Tribble

Agricultural Economics
Kirby Dean Fecht

Agriculture
Ashley Marie Keil

Animal Sciences
Evan Michael Molitor
Michael McKinley York

Biochemistry
Benjamin Douglas Sammons

Food Science and Nutrition
Sarah Gene Cooper

**Hospitality Management
Conference & Event Planning
Management**

Taylor Nicole Thompson
Lodging Management
Sheridan Nicole Cook
Taylor Nicole Thompson

BACHELOR OF SCIENCE Agribusiness Management

John Richard Anderson
Charles Michael Briggs
Justin Ray Deornellis
Johnny Dewalt
Scotty Frank Dolan
Kyle Robert Fuehring
Grant Thomas Harper
Travis Richard Huber
Trenton Jay Lowry
Alexis Elaine McMillin
Timothy Herbert Niewald
David Henry Owens
Jessica Leigh Pratt
Sidney Marie Schenkel
Kyle William Starke
Cameron Wade Vulgamott

**Agricultural Education
Leadership**

Emalee Karen Browning
Holly Leann Loyd
Elizabeth Marie Ward

**Agricultural Systems
Management**

Tyler Behlmann
Josh Daniel Conrad
Patrick Donald Gibbons
Kevin Andrew Morrow
Timothy Herbert Niewald
Ryan Timothy Nystrom
Remington Ivan Ping

Agriculture
Cody Lee Ables
Evan Thomas Boehm

Michael Robert Farr
Anthony Edward Feicht, Jr.
Ryan G. Gill
James Scott McCain

Jessi Anne Perry
Deja Marie Shelby
Gorden Lee Wray
James Garrett Wright

Sustainable Agriculture
Joseph Boland Kuszaj
Curtis Dwayne Pepper

Animal Sciences
Shelby Nicholle Agolia
Tressa Mae Alderson

Megan Marie Behring
Erin Ashley Bennett
Nathan Richard Bloss
Krystin Nicole Cardozo

Rebecca Christine Clodfelter
Briona Chavez Conway
Paige Lynn Davis

Ashley Lynn Di Mercurio
Julia Mackenzie Drummond
Kathleen Marie Etter

Tessa Elizabeth Hall
Mariah Lynn Hart
August Hardin Horstmann

Sydney Alexis Kastens
Laura Ann Lorentz
Matthew Robert Mainieri

Rylee Dawn Mullins
Margaret Susan Pionke
Audrey Fay Plummer

Justin Michael Rehmeier
Cynthia Kim Sakai
Zachary Daniel Sanders

Paula Ignacia Santibanez
Amanda Lee Schmelzle
Ciara Elizabeth Schmidt

Audreonna Lynn Taylor
Angela Renee Tenca
Shelby Renee Wiegand

Biochemistry
Bradley Steven Annen
Justin Lee Derks

Colin Robert Herbrand
Sarah Kang
Eric Joseph Renne

Zackery D. Richardson
Andrew John Wolf
Monica Lee Wolf

Food Science and Nutrition
Charles Robert Broadhacker
Rae Catherine Cavano

Kelli Lynnette Cruise
Abigail Lee McNeill
Kelli Lee Meyer

Hospitality Management

Nathan A. Cramer
**Conference & Event Planning
Management**

Harley Rene Bailey
Cassidy Nicole Berendzen
Margaret Grace Bisbee

Ashley Nicole Bland
Daniel Steven Boryca
Marisa Caitlin Buster

Eric Alexander Bryda
Cambridge Patrick Cates
Amber Mali Chapin

Meredith Anne Curd
Emily Marie Darter
Elise Marie Ferron

Erica M. Gaston
Andrea Maria Hawkins
James Butler Hickok

Kanasha O. Hoover
Emma Marie Meek
Alison Michele Moore

Kerry Marie O'Connor
Michelle Lynn Rogge
Kaitlin Eileen Schulze

Haylee Michelle Schwartz
Darcy Madeline Silkwood
Hanna Danee Souther

Hallie Jo Spaar
Amy Marie Thomas
Sydney Lauren Ungerott

Christina Ashley Walls
Devyn Layne Windlor
Claire Marie Winkelmann

Rachel Ann Woodhurst
Food and Beverage Management

John Travis Bernard
Kelly Ann Buchheit
Colton Lee Carson

Thomas Joseph Eckles
Jernan Daniel Herman
Kyle Edward Kraft

Margaret Elizabeth
Ladendecker
Alyssa Marie McKee

Jacob Motta
Andrea Rose Rechiene
Ellyn Margaret Reed

Chelsea Marie Robbins
James Tice Rollins
Michael David Unes

Daniel Lawrence Wismann
Lodging Management
Maddison Gene Balachowski

Alexander John Beck
Ethan Robert Bond

Continued on next page.

Andrew C. Dodenhoff
 Amy Rebecca Field
 Kimberly Dorothy Holsinger
 Taylor Rose King
 Ryan Paul Ravellette
 Rachel Danielle Sosa
 Katherine Leigh Steinman
Sport Venue Management
 Melissa Nicole Brotherton
 Dominic David Caldarello
 Michael Lloyd Clark
 Emily Marie Darter
 Jared Romain Fenstermacher

Erica M. Gaston
 Daniel Joseph Hink
 Makayla Renee Jackson
 Shane Ben Kottwitz
 Denis John O'Grady
 David A. Sprowl
 Jefferson Robbins Thomas
 Rachel Ann Woodhurst
Plant Sciences
Breeding Biology & Biotech
 Matthew Curtis Fleetwood
 Madison Michael Knapp
 Natalie Marie Wehner

Crop Management
 Matthew Curtis Fleetwood
 Nathan Paul Harris
Horticultural Science & Design
 Christopher Scott Harrington
 Spencer Blaine Hoagland
 Hilary Erin Sears
 Megan M. Stanek
**Ornamental Plant Prod/
 Operational Mgmt**
 Shaun Michael Billman

Turfgrass Science
 Dennis James Cregan II
 Charles Frederick
 Schauwecker
**Science and Agricultural
 Journalism**
 Halli Dunn Bruton
 Payton Carol Ehrhardt

SCHOOL OF NATURAL RESOURCES

**BACHELOR OF SCIENCE
 MAGNA CUM LAUDE**
Parks, Recreation and Tourism
Sport Management
 Brian Thomas Ruehlmann
 Alex Kent Stone
 William Louis Sutton

**BACHELOR OF SCIENCE
 CUM LAUDE**
Parks, Recreation and Tourism
Sport Management
 Drew William Adler
 Joshua James Ebbesmeyer
 Matthew James McMullen
 Carter David Patton
**Soil, Environmental and
 Atmospheric Sciences**
Atmospheric Science
 Corey James Stengel
Environmental Science
 Colleen Jeanette Armstrong

BACHELOR OF SCIENCE
Parks, Recreation and Tourism
 Chris Michael Matlock
Leisure Service Management
 Henry Ellis Hermes
 Leah Rose Hurwitz
 Macall Cay Kirchhoff
 Anna Gabriella Shirley
**Natural Resource Recreation
 Management**
 Halli Dunn Bruton
 Samuel Salvatore Guccione
Sport Management
 Kevin Louis Acciani
 Moyinoluwa Caleb Adewole
 Christopher Louis Ballard
 Christopher Joseph Barber

Matthew Donald Bauchle
 Kristin Rene Bellinghausen
 Alexander Wakefield Botts
 Tanner Cullen Bryant
 David Blane Campbell
 Matthew Eliot Caspari
 Michael Thomas Cox
 Jacob Anthony Defrancesco
 Austin Michael Dorward
 Jacob Donald Dugger
 Connor Thane Eaton
 Roy Edward Florez
 Zoe Michelle Goplerud
 Keith David Hahn
 Kristin Marie Halford
 Tyler Gregory Hall
 Drew Benjamin Hilgendorf
 Mitchell James Huebner
 Yoojin Kang
 Shannon Nicole Le
 Conner Ryan Morris
 Amanda Elizabeth Nusbaum
 Robert Patrick O'Neill
 Vanessa Pride
 William Dylan Rowe
 Warren Dean Sayles
 Brenden Jeffrey Schaeffer
 Alex Carl Schlemmer
 Patrick Joseph Scott
 Tyler James Self
 Alec Brandon Shaw
 Alyssa Michelle Shermer
 John Jerald Sjoberg
 Daniel Joseph Tapko
 Jacob Andrew Vantrease
 Thomas Velev
 Samuel Davis Vickery
 Asia Danielle Walls
 Daniel Matthew Ward
 Dane Matthew Wenger

Dylan Joseph Wilcox
 John David Weyant
 Maurice James Woodley
Tourism Development
 Ellen Grace Woods
Atmospheric Science
 Abigail Frances Billesbach
 Sarah Irene Fairman
 James Riley Fannon
 Kevin Ronald Grempler
 Richard Anthony Woodruff
Environmental Science
 Cherylyn Catherine Kelley
 Zachary William Haverly
 James Joseph Marti
 Austin Vance Rehagen
 Jeffrey Tyler Romine
 Tyler William Steusloff
 Brian Paul Walser

**BACHELOR OF SCIENCE IN
 FISHERIES AND WILDLIFE**
SUMMA CUM LAUDE
Fisheries and Wildlife
 Katie Leigh Fritzemeyer

**BACHELOR OF SCIENCE IN
 FISHERIES AND WILDLIFE**
MAGNA CUM LAUDE
Fisheries and Wildlife
 Montanna Marie Walden

**BACHELOR OF SCIENCE IN
 FISHERIES AND WILDLIFE**
CUM LAUDE
Fisheries and Wildlife
 Curtis Joseph Frazier
 Mikayla Caroline Kuntzman
 Jourdan Hannah Thomas

**BACHELOR OF SCIENCE IN
 FISHERIES AND WILDLIFE**
Fisheries and Wildlife
 Kelsey Lee Brandkamp
 Sarah E. Cochran
 Rebecca Elaine Davis
 Desiree Lee Drake
 Tiffany Dawn Glasgow
 Haley Louise Krachenfels
 Alexandra Camille G. Laboile
 Summer Marie Manning
 Anna Marien Maness
 Alex Mark Simpher
 Margaret Maude Sperkowski
 Brett Edward Twenter
 Aaron Daniel Varwig
 Benjamin Michael Wilman

**BACHELOR OF SCIENCE IN
 FORESTRY**
MAGNA CUM LAUDE
Forestry
Urban Forestry
 Elizabeth Wernert

**BACHELOR OF SCIENCE IN
 FORESTRY**
CUM LAUDE
Forestry
 Curtis Joseph Frazier
 Jourdan Hannah Thomas

**BACHELOR OF SCIENCE IN
 FORESTRY**
Forestry
 Christopher Thomas Sexauer
 Nina Lee Wajrowski
Forest Resource Management
 Jordan Wayne Clough

COLLEGE OF ARTS & SCIENCE

^aDenotes Summer 2015 graduate

**BACHELOR OF ARTS
SUMMA CUM LAUDE -
WITH HONORS**

Communication

Taylor McAdams Hill

**BACHELOR OF ARTS
CUM LAUDE - WITH
HONORS**

Communication

Erica Ruth Eisenberg

**BACHELOR OF ARTS
CUM LAUDE - HONORS
CERTIFICATE**

Economics

Ann Elizabeth Glavan

English

Nathan Joseph Ellermeier

Spanish

Nathan Joseph Ellermeier

**BACHELOR OF ARTS
SUMMA CUM LAUDE
Art History and Archaeology**

Brett Lee Johnson

English

Erin Christine Regneri
Osborne

International Studies

International Business

Robyn Breanna Barks-Singer

Mathematics

Danielle Colette Mann

Political Science

Emily Jane Jaeger

Spanish

Emily Jane Jaeger

**BACHELOR OF ARTS
MAGNA CUM LAUDE
Film Studies**

Kristen Simone Hill

History

Richard Lik Jie Liew
Rebekah Zubaida Yousaf

Interdisciplinary

Emily Carroll Bartlett
Avery Enderle Wagner

Psychology

Elizabeth Ann Armstrong

**BACHELOR OF ARTS
CUM LAUDE**

Economics

Neel Ketanbhai Patel

Geography

Geographic Info Sciences

Trent Whitley

Psychology

Grace Morgan Woessner

Sociology

Laurel Claire Sheffield

**BACHELOR OF ARTS
WITH HONORS - HONORS
CERTIFICATE**

International Studies

East Asian Studies

Thomas Joseph Barclay

**BACHELOR OF ARTS
WITH HONORS**

Communication

Meghann Elizabeth Black
Alexandra Leigh Sopocy

English

Tiffany Melecio

German

Donna Kristine McDonald
Ballage

Psychology

Sarah Michelle Billingsly
Katerina Maria Rios

**BACHELOR OF ARTS
HONORS CERTIFICATE**

Biological Sciences

Ami Nitin Kumar Bhatt

Psychology

Nicole Erin Franklin
Logan Ray Kinder
Faith Suzanne Knocke

**BACHELOR OF ARTS
Anthropology**

Melissa Marie Gephardt
Taryn Lee Merritt
Mary Katherine Rademacher
Emily Annika Sewell

Art

Brendan Tyler Coleman
Jennifer Lauren Degenhardt
Scott Henry Englund
Michelle Velta Riddle
Jordyn Danae Roberts
Luke Taylor Sanders
Alex Michael Wehner

Art History and Archaeology

Matthew Donald Flores
Katelyn Mary Lanning
Elizabeth Ann Randolph

Biological Sciences

Aisha Olasubomi Bankole-
Hameed
Daniel Edward Berlyn
Elly J. Bruning
Daija Mertell Buchanan
Hayley Elizabeth Burgess
Leslie Marande Jackson

Montaya Leshae Jones

Janae Denise Judon

Kayleigh Elizabeth Kiser

Brandy Nachell Leggins

Kimberly Carol Martin

Christiana Maria Marvray

Kelsey Logan McDonald

Khala Frances McDonald

Amy Franklin Parks

Sean Edward Parrin

Mit George Patel

Brianna Lynn Priddy

Alexander D. Rorie

Melissa Christine Sadowski

Emma Kaylene Segar

Jonathan Tyler Shocklin

Marissa Ann Stewart

Aaron Patrick Timma

Aubreyanna Kay Wenzl

Eric Steven Whipple

Classics

Classical Humanities

Mason Timothy Boehm

Paige Leeann Donnelly

Olivia Joyce Lockett

Latin

Elizabeth Ann Randolph

Communication

Natalie Wade Bohannon

Brock Tyler Bondurant

Alexander Wakefield Botts

Kylie Marie Boyer

Alan Spencer Brant

Levi Stanton Brugger

Hannah Joan Corbett

Matthew Lucien Cresionnie

Paul Philip Dorsey

Madeline Claire Dufek

Adam Jacob Edelman

Isaiah Ogonna Edoho

Margaret Miller Erickson

Rachel Lauren Gangwere

Yiwei Ge

Corrin Isabella Genovese

Morris Andre Grant

Kristyn Don Head

Latisha Jade Hickem

Hannah May Hobson

Kristen Brianna Jones

Kara Danielle Kieffer

Alexandra Nichole Krus

Russell Jeffery Levine

James Craig Lewis

D'Andre Alexander McKenzie

Justin T. McMahon

Theobald Coleman McSheehy IV

Brooke Alexis Morrison

Kelly Anne Moyers

Case Edward Munson

Rachael Inez Owens

Dominic Joseph Peters

Alexander James Pettus

Miranda Renee Pratt

Corinna E. Ridenhour

Stephanie McAnn Ross

Jessica Marie Stafford

Chelsie Taylor Stevens

Morgan Eric Steward

Briana Kristen Stone

Nhien Nguyen Truong

Yixuan Wang

Claire Elizabeth Winegar

Xinli Xu

Yuemei Yuan

Paige Jacqueline Zohoury

Computer Science

Bryan Sean Esmond

Alexis Ebony Paige-Glenn

Karl Nikolas Kosse

Francois Howard Mariette

Caleb August Mueller

Justin Brennan Schubring

Joshua Shane Thorp

Economics

Duncan Patrick Brady

Feng Chen

Melinda Osamedie Egharevba

Matthew Ryan Heuton

Taylor John Major

Gelisa Arianna Ross

Jana Marie St.Eve

Qinyi Sun

Mary Alyson Willis

Honghua Wu

Zhenlong Xu

English

Kathryn Rose Akin

Cara Elizabeth Alexander

Jaanna Alvin Anaemereibe

Paige Nicole Block

Steven Wade Brookreson

Benjamin V. Cairns

Kristen Amelia Carranza

Jami Lynn Carter

Lauren Elizabeth Carter

Brittany F. Coleman

Matthew Lucien Cressionnie

Sarah Elizabeth Dettmer

Robert Dean DiMarco

Haris Fazlic

Mitchell Benjamin Ferman

Taylor Elise Fox

Whitney Lynn Greenwell

Keegan Michael Haines

Chelsea Annette Hensley

Austin Douglas Jones

Lindsey Susan Marschka

Jeffrey S. McGinness

D'Andre Alexander McKenzie

Justin T. McMahon

Continued on next page.

<p>Ayanna Monique Poole Timothy Matthew Pufundt Derrek Joseph Sabin Marissa Mildred Weiher Jesse Ray Whitaker Lauren Ashley Wichern William Thomas Zvirblis</p> <p>Environmental Geology Austin Thomas Luecke</p> <p>Film Studies Nichi Victoria Hoskins Taylor James Nixon Benjamin Robin Taylor</p> <p>French Skyler Nicole Alderton</p> <p>Geography <i>Geographic Info Sciences</i> Jeffrey William Behrens Kyle Thomas Peterson Ryan Christopher Warnes</p> <p><i>Regional / Cultural</i> Lindsey Susan Marschka</p> <p>Geological Sciences Briana Kristen Stone</p> <p>German Moses Opemipo Daniel Taylor Avery McKenna Lauren McKinley Mueller</p> <p>History Benjamin D. Baxter Matthew Joseph Buchholz Marc William Coldiron Monica Masson Derbes Lindsey Elizabeth Dinkel Lindsey Nicole Dryden Charles Lucas Fennwald Lindsay Sue Henderson Chris Perry Herron-Venancio Carolee Maxine Hoerner Nick Dane Hornbarger Charles Matthew Johnson Katherine Elizabeth Kellow Kara Danielle Kieffer Gregory Todd Meador Andrea Lynn Provance Jeremy Wayne Rohrer Emma Kaylene Segar Cale Chapman Spangler Daniel Joseph Spink Jana Marie St.Eve Lindsey Marie Van Oyen Chelsea Clarke Watkins^A Detrez T. Woods Tyler Cole Zentz</p> <p>Interdisciplinary James Fawzi-Masoud Aladham David Daniel Anfield Brian Bourk Aylward Brinna Louise Ball Madalyn Elena Baugh Brandon Leo Bolk Anthony Bonano Paige Nicole Bonner Sean Connor Brice Iesha Renee Brown John William Buchholz Katie Lynn Buescher</p>	<p>Kelsey Elizabeth Burns MacKenzie Eileen Capogna Fu Chai Christopher Lee Chandler Bryce Meyer Cohen Hunter Larkin Cook Patrice Simone Cowan Kevin Daley Andrea Catherine Davis Max Richard Dyson Zachary Thomas Fleck II Brigid Eileen Foley Joseph Kaleb Follis Mollie Moore Freeman Rachel Emily Gaffney Alyssa Beth Garcia Andrew Patrick Gates Morgan Reed Gault Grace Ann Goudie Solange Estela Hail Robert Louis Hamblet Tyler Aaron Henderson Marjani Safiya Holt Yuxin Hu Rashaun Lamar Hutchinson Sean Michael Irwin Steven Hodges Jackson Richard Henry Jakowsky Charles Richard Javors Breeda Theresa Joyce Cole Glenn Keeven Logan Paul Kessel Ashton Lee Knippenberg Andrew Robert Kohrs Carly Christine LaFevers Leon Scott Lamphear Jessica Rose Landwehr Sarah Lashley Symone Lisa Lenoir Julian Devon Love Aaron I. Mack Jacob Tyler Macklin Colleen Jennifer Mahoney Shelby Lynn Mahsman Kelsie Merit Maledy Amanda Jane Maloney Khadijah Sheaundrea McGill Jacob John Meletio Charles Andrew Metcalf Megan Elizabeth Monfreda Qiana Jade Moore-Nightangale Marti Monaghan Nary Zackariah Gellman Nolan Nur Syarafina Binti Omar Justin David Beaman Owens Blake Chandler Philips Paul Louis Pisani Christian Raimondo Pitti Mercedes Ellen Printz Michele Ashley Robotham-Smith Zachary Isaac Rothstein Mazenzie Lynn Schoenfelt Danielle Marie Shroyer Rachel Alyssa Sickles Katherine Ann Slaten Patreece Elisabeth Smith Katherine Lindsay Sprauer</p>	<p>Christopher Allen Spudic Gary Michael Stentz Lacey Lyn Sterling Zach Kent Strader Sarah Elizabeth Thiele Charles Wesley Thomas III Lauren Kathleen Thomas Drew Robert Vachon Chelsea La Gabrielle Waters Julie Britt Zoeller</p> <p>Black Studies Melinda Osamedie Egharevba</p> <p>Peace Studies Gabrielle Chay Contreras</p> <p>Women's and Gender Studies Sarah Marie Fuller</p> <p>International Studies <i>East Asian Studies</i> Ryan Michael Dunn Matthew Charles Flecke Sang Yun Han Tyler Prescott Morrow Kaitlyn Elizabeth Phillips</p> <p>Environmental Studies Logan McKenzi Kensinger Alexandra Nichole Krus</p> <p>European Studies Jonathan Olaoluwa Ilori Darion De'Angelo Jordan Hyun Seung Noh Mary Katherine Rademacher Dinu Zheng</p> <p>International Business Skyler Nicole Alderton Haley Erin Beckett Ashley Catherine Bonn Taylor DeAnne Cullen Leslie Suzanne Gion Alexander Bryce Hager Travis Michael Hawks Josh Timothy Hyde Ryan Paul Kawelaske Madison Elizabeth Lantz Alice Boi Lo Anthony Julio Munoz Marie Laurayne Schaller Shannon Hanora Marie Scheidt Nick Ryan Silistria Jennifer Brandi Ware</p> <p>Latin American Studies Stefanie Rosa Burt Jack Stephen Suntrup Nathaniel Robert West</p> <p>Peace Studies Nicholas Edward Dischbein Bailey Elizebeth Laux Lauren Elyse McDermott Christopher N. Meritt Nicholas Ryan Rickerson Kristin Marie Stafford Mackenzie Ray Thurman Desmon Brock Turner Zachary Christopher Wills</p> <p>Linguistics Lauren Elizabeth Battle Jeffrey Lawrence Grant</p>	<p>Bailey Elizebeth Laux Jennifer Brandi Ware</p> <p>Music Hannah Christine Pederson Joshua Shane Thorp</p> <p>Philosophy Eric Mitchell Anderson Jessica Diane Belcher Taylor Andrew Dunn Eric Tyler Glover Nicholas Ryan Rickerson Jason Richard Schabinger Brittany Nicole Woods</p> <p>Political Science Ryan Michael Binz Zachary George Capps Marc William Coldiron John Hays Crawford Moses Opemipo Daniel Margaret Miller Erickson Nicholas Raymond Fears Sarah Marie Fuller Ricardo Garcia-Villegas Samuel Harrison Gibson Angeline Kemia Hatcher Scott Tyler Hillis Karim Jahar Howard Turner James Johnson James Craig Lewis Matthew James McCann Christopher N. Meritt Taela Monique Moyer Cathryn Nicole Mulkey Ian G. Paris Kyle Kelvin Pennant Stephanie Catherine Perry Gelisa Arianna Ross Mary Alyson Willis</p> <p>Psychology Olaitan Modupe Akintola Katherine Morrison Allen Jasmine Olivia Barnes Lauren Nicole Boehm Tori Renee Breen Casey Anne Breslin Stephanie Brigette Connor Hailey Mae Crabtree Preston Tanner Crouse Alexandra Suzanne Dalton Asantewaa Akosua Darkwa Mary Elizabeth Daugherty Stephen Michael Douglas Paige Olivia Dye Brady Gene Finn Danielle Julia Fraser Alycia Caresse Gamargo Kailee Renae Geosling Eric Tyler Glover Savannah Brook Griggs Samija Halilovic Jonathan Bryce Hambacker Briana Rose Haney Chris Perry Herron-Venancio Deidre Leigh Jenkins Connor Roe Johansen</p>
---	--	---	---

Continued on next page.

Anthony Joseph Klos
 Colleen Marie Koehr
 James Arthur Koester
 Elijah Mackenzie Koyne
 Jessica Nicole Kreter
 Kayla Lynn Luber
 Richard Donovan Magoncia
 Anne Marie Marshall
 Delpha Alexandra McManus
 Ryan Gregory Mead
 Jessica Nicole Mensch
 Isaac Samuel Michaels
 Alexandra Margaret Moore
 Kelly Elizabeth Morris
 Chelsea Kaitlyn Muich
 Alantra Yvette Neal
 Melanie Marie O'Donnell
 Martin Ortega
 Jenna Nicole Overschmidt
 Rachel Kathryn Parks
 Erika Nicole Payne
 Kathi Pham
 Raegan Cera Jerelle Pierson
 Rachel Mae Presti
 Kara Anne Rapp
 Tevin Michael Rose
 Camron Dale Ruckman
 Taylor J. Russell
 Alex Michael Saragusa
 Shelby May Sattman
 Jason Richard Schabinger
 Kari Elizabeth Schram
 Laura Blair Shirey
 Jonathan Tyler Shocklin
 Megan Elizabeth Shults
 Matthew James Simpson
 Gabrielle M. Smith
 Andrew Christopher Stevens
 Catherine Ann Terbrock
 Laura Juana Vidal-Romero
 Matthew Cody Wade
 Jennifer Nicole Walker
 Aubreyanna Kay Wenzl
 Alayna Paige West
 Kaleigh Brooke Whiston
 Whitney Nicole Williams
 Marcel Marcus Wilson
 Justin Taylor Winn
 Brittany Nicole Woods
 Jenna Suzanne Wooley

Religious Studies
 Haydn Ross Campmier
 Gregory Alan Chrisman
 Jared William Griffin
 Catlin Maurene Wisdom

Russian
 Xinli Xu

Sociology
 Taylor Michelle Armstrong
 Donovan Xavier Bates
 Ryan Michael Binz
 Casey Anne Breslin
 Courtney Renee Carter
 Alena J. Cooper
 Wesley Jamiel Dandridge
 Jessica Marie Diestel
 Mack Donahoe Gonzales

Savannah Brook Griggs
 Samija Halilovic
 Briana Rose Haney
 Erin Macy Hansen
 Taylor Anthony Hunter
 Nicholas Charles Ingram
 Nicholas Christian Kossmeyer
 Anne Marie Marshall
 Delpha Alexandra McManus
 Vickie Meng
 Cathryn Nicole Mulkey
 Jenna Nicole Overschmidt
 Jason Douglas Rexford
 Katerina Maria Rios
 Allison Marie Roderick
 Adrian Tyler Sims
 Alexandra Leigh Sopocy
 Charles Alexander Steiner
 Xiaosu Tian
 Steven Patrick Walsh
 Yixuan Wang
 Lanard Williams
 Claire Elizabeth Winegar

Spanish
 Kristen Amelia Carranza
 Nicole Ana Crespi
 Samuel Harrison Gibson
 Karina Artemis Heizer
 Taela Monique Moyer
 Emily Katherine Riekhof

Theatre
Performance
 Randolph William Hussey
 Michael Drake Krueger
 Jeffrey David Simpson
 Lynett Suttner Nguyen Vallejo

**BACHELOR OF FINE ARTS
 SUMMA CUM LAUDE**
Art
 Brianna Marie Heese
 Karesse Ariel Wilkey

**BACHELOR OF FINE ARTS
 CUM LAUDE**
Art
 Shana Margaret Prusha

**BACHELOR OF FINE ARTS
 Art**
 Carly Shea Boyd
 Melanie Grace Bruning
 Hailey Mae Crabtree
 Sara Irene Dennis
 Thomas Michael Diedrich
 Samantha Erin Edwards
 Amber Dawn Findley
 Jessica Caitlin Hicks
 Kristen Michelle Karpowicz
 Whitney Jill Lockhart
 Taylor James Nixon
 Haille Surrinder Marie Norris
 Alina May Rogers
 Lauren Elizabeth Seabaugh
 Carolyn Louise Sweet

**BACHELOR OF GENERAL
 STUDIES**

General Studies

Clay Edward Beyersdorfer
 Kentrell Marquis Brothers
 Tarah Bullaro
 Nicholas Martin Christensen
 Rebecca Marie Clawson
 Kaci Lynn Copas
 Nicholas Brett Costanza
 Aaron Anthony Crittendon
 Ryan Sheridan Dickey
 Leilani Lehua Dvorak
 Rachel Ann Earley
 Allison Danielle Edwards
 Florence Olaore Fagbemi
 Cory James Fitzgerald
 Edwin Bernard Gaines
 Melinda Kay Green
 Brooke Eileen Grove
 Drew Duncan Halliday
 Brianne Marie Hamilton
 Frances Rosemelyn Henzel
 Davis Smart Holland
 Belinda Joy Jackson
 Arthur Dock Johnson
 Jarrell Carlton Johnson
 Bethany Michele Kendrick
 Megan Elizabeth Lewis
 Justin Roger Lincoln
 Kyle Thomas Lynn
 Mimi Thuy Mach
 Noha Ramzi Mavrakis
 Wade Grant Mayham III
 Laura Grace McNamar
 Joshua Brian Mesmer
 John Austin Miles
 Meredith Anne Miles
 Brian James Miller
 Victoria Christine Montgomery
 Dylan Andrew Mozier
 Seth Thomas Muenks
 Matthew Riley Muller
 Derek Steven Mullins
 Mary Jane Murray
 Markiesa Dewana Parker
 Brett Lawrence Peel
 Benjamin Peterson
 Deborah Diane Ramsey
 Joseph Arthur Richerson
 Wadi A. Rodriguez
 Jake Patrick Rosenberg
 Kyle Schneider
 Andrew Gregory Schwaab
 Britani Lyn Siebeneck
 Ian Prentice Simon
 Andrew Charles Slocum
 William Payne Stoddart
 Marcielle K. Tigas
 Dean Cameron Wiley
 Jennifer Ann Willis
 Jordan Adam Wood

**BACHELOR OF MUSIC
 CUM LAUDE**

Music
Performance
 Xiaoxiao Du

**BACHELOR OF SCIENCE
 SUMMA CUM LAUDE -
 WITH HONORS**

Economics
 Xin Chen

**BACHELOR OF SCIENCE
 SUMMA CUM LAUDE -
 HONORS CERTIFICATE**

Biological Sciences
 Amanda Andrea Baebler
 Nicole Elizabeth Kagan

Psychology
 Edward James Schmitt

**BACHELOR OF SCIENCE
 CUM LAUDE - HONORS
 CERTIFICATE**

Biological Sciences
 Samantha Jo Belvin
 Audrey Anne Wagner

**BACHELOR OF SCIENCE
 SUMMA CUM LAUDE**

Mathematics
 Xin Chen

**BACHELOR OF SCIENCE
 MAGNA CUM LAUDE**

Biological Sciences
 Cody Allan Ford
 Jackson Neal Furlong
 Ryan M. Tegethoff

Physics
 Gregory Jacob Jenkins

**BACHELOR OF SCIENCE
 CUM LAUDE**

Biological Sciences
 Alicia Michelle Dunajcik

Mathematics
 Daniel Okto Pemuda
 Sinambela

Physics
Materials Science
 Kristin Gooden

Psychology
 Lauren Anne Bentsch

**BACHELOR OF SCIENCE
 UNIVERSITY HONORS**

Biological Sciences
 Stephanie Lauren Stupps

**BACHELOR OF SCIENCE
 WITH HONORS**

Biological Sciences
 Vincent David Markovitz

Continued on next page.

Geological Sciences

Kelly Bryan Hickcox
Dylan Paul Lambur

Statistics

Jiexin Xu
Bo Zhang

**BACHELOR OF SCIENCE
HONORS CERTIFICATE****Biological Sciences**

Taylor Marie Black
Tracy Alanna Campbell
Haley Spencer Smith

BACHELOR OF SCIENCE**Biological Sciences**

Marisa Ann Arunakul
Annalisa Siose Baguio
Danielle Leigh Baker
Garrett Cole Booher
Victoria Faith Bradford
Nicole A. Cope
Brandon Alexander Courtney

Zachary Robert Cressman

Lindsey Nicole Dryden
Aaron David Esterle
Jessica Breann Galindo
Hunter Ryan Gash
Jared Richard Gipfert
Alexy Layne Grant
Samuel Gerard Green
Angela Bo Rim Javurek
Brittany Nicole Johnson
Benjamin William James Kayser
Katherine Lane
Allison Noelle Martino
Brandt David McMillan
Jung Yeon Nam
Andre Evan Potter
Andrew Jeffrey Ruth
Julia Marie Schroer
Robert Joseph Stuart
Matthew Malachi Swartz
Mitchell Christopher Temming
Ryan Richard Turnquist
Steven Mikel Ulrich

Nathan Marion Weaver
Whitney Nicole Williams
Logan Wilson

Chemistry

Elena Inabelle Bray
Steven Patrick Devine
Dalton Travis Doerr
Megan Flatt
Kayley Cheyenne Watson
Michael Austin Zambrana

Economics

Darryl Lance Aikens
Grayson Paul Cooper
Kaleb Wayne Graffis
Tucker Kevin Griggs
Benjamin Carl Morris Jr
Hanxiong Qin
Karl William Schnase
Paul Connor Studdard

Geological Sciences

Kevin Patrick Costello
Haris Rachelle Hopkins

Mathematics

Hanxiong Qin
Karl William Schnase
Melvin Olano Wright

Physics

Devin James Christman
Derrick Patrick McCarty
Fadi Ahmed Muqem
Dan Tyler Paterson
Brian Michael Rowe
Samantha Sweet

Psychology

Leslie Marande Jackson
Jeremy Todd Morton
Julia Marie Schroer
Robert Joseph Stuart

Statistics

Oladimeji Umar Adeniran
William Ray Burkett
Narae Kim
Hanxiong Qin
John Michael Salva

ROBERT J. TRULASKE, SR.

COLLEGE OF BUSINESS

**BACHELOR OF SCIENCE IN
ACCOUNTANCY
SUMMA CUM LAUDE****Accountancy**

Thomas Arthur Deuschle Jr.
Jason Christopher Kuziel
Andrew Todd Reilly
Chance Patrick Williams
Bryan Joseph Wolz

**BACHELOR OF SCIENCE IN
ACCOUNTANCY
MAGNA CUM LAUDE****Accountancy**

Alexandra Jane Brown
Sung Oh Kim
Timothy August Pettey
Leland David Schoenhoff
Madeline Christiane Slinker

**BACHELOR OF SCIENCE IN
ACCOUNTANCY
CUM LAUDE****Accountancy**

Shelby Nichole Boehm
Scott Daniel Herring
Mark Andrew Jaskowiak

Allison Mae Lowery
Dominic Antonio Martinez
Clinton Ray Metheny
Jaclyn Kate Poe
Bryce Steven Smith
Jordan Thomas Wybrant

**BACHELOR OF SCIENCE IN
ACCOUNTANCY****Accountancy**

Thomas Vincent Groff
Matthew Warren Percell
Alexander James Pirotte
Joseph Michael Urschler

**BACHELOR OF
SCIENCE IN BUSINESS
ADMINISTRATION
SUMMA CUM LAUDE -
HONORS CERTIFICATE****Business Administration
Marketing**

Katrina Noel Molholm

**BACHELOR OF
SCIENCE IN BUSINESS
ADMINISTRATION
SUMMA CUM LAUDE****Business Administration****International Business****Management**

Robyn Breanna Barks-Singer

Management

Nicole Tay Rieken

**BACHELOR OF
SCIENCE IN BUSINESS
ADMINISTRATION
MAGNA CUM LAUDE****Business Administration****Economics**

Brennen Michael Kluner
Raymond Tiu

Finance and Banking

Garrett Roman Watt Funk
Landis Keith George
Michael Francis Griffard
Brennen Michael Kluner
Joseph Scott Stuckenschneider

International Business Marketing

Haley Erin Beckett

Management

Paige Berit Anderson
Anna Eileen Rehling
Grace Morgan Woessner

Real Estate

Garrett Roman Watt Funk
Michael Francis Griffard

**BACHELOR OF
SCIENCE IN BUSINESS
ADMINISTRATION
CUM LAUDE****Business Administration****Finance and Banking**

Nicholas Reid Enno
Daniel Alan Fuhrig
Trey Mathew Garland
Matthew Ryan Heuton
Heather Nicole Julifs
Jill Ann Kelso
Ryan David Klinkhammer
Dylan Randall Lueckenotte
Neel Ketanbhai Patel
Adam F. Steinmetz

Continued on next page.

International Business Finance

Alexander Bryce Hager
Josh Timothy Hyde
Nick Ryan Silistria

Management

Hannah Simone Plowman

Marketing

Joseph Daniel Kindig
Gabriel Christian Smith

Real Estate

Alexander Bryce Hager
Ryan David Klinkhammer
Dylan Randall Lueckenotte
Adam F. Steinmetz

**BACHELOR OF
SCIENCE IN BUSINESS
ADMINISTRATION
HONORS CERTIFICATE**

Business Administration

Finance and Banking
Jordan Thomas Wybrant

**BACHELOR OF
SCIENCE IN BUSINESS
ADMINISTRATION**

Business Administration

Economics

Thomas Joseph Allen
Carl Michael Beck
Andrew John Freiberg
Caleb Joseph Hartzell
Travis Roy Howard
Danielle L. Levy
Benjamin Leo Pohlman
Yingzi Qi
Patrick Roman Sinwelski
Nicholas William Snyder

Finance and Banking

Thomas Joseph Allen
Andrew Joseph Bader
Greg Victor Banek
Grant Karl Bauer
Don Isaac Baumann
Jessica Anne Bednarko
Christina Gene Behnken
Reena Vadilal Bhagat
Alec Michael Boente
Joseph Frank Brancato
Kevin Matthew Brotherton
Jacob Thomas Brown
Austin Michael Burger
Amy Chen
Alexander James Dale
Andrew Robert Davis
Kaitlyn Elizabeth Dobsch
Jeffrey Thomas Dorn
Ryan Andrew Dunn

John Robert Faulkenberry
Philip Andrew Fracica
Chase Alan Frerking
Hayden Fletcher Harper
Cody Christopher Hilke
Eric Kenneth Judd
Adam James Kerschinske
Matthew Jacob Koomen
Spencer Steven Maass
Alex Joseph Marino
Emily Martin
Joseph Patrick McGovern
Anthony Paul Michael
Casey Andrew Miller
Joseph Robert Moore
Soe Moe Naing
Morgan Michele Nelson
Rhett Weston Obermann
Brian F. Paur
Dalton James Preston
John Daniel Proseri
John Michael Rosa
Alexander I. Sanchez
Christopher Michael Shea
Nicholas William Snyder
Brandon Jamal Spruill
Joseph Parker Stewart
Christopher Mark Thompson
Wesley Nolan Whitford
Collin Robert Willand
Kyle Michel Williams
Michael Francis Wright
Andrew Thomas Wyatt

International Business Finance

Ryan Paul Kawelasko

International Business

Management

Travis Michael Hawks
Madison Elizabeth Lantz
Alice Boi Lo
Marie Laurayne Schaller
Shannon Hanora Marie Scheidt
Jennifer Brandi Ware

International Business Marketing

Skyler Nicole Alderton
Ashley Catherine Bonn
Taylor DeAnne Cullen
Leslie Suzanne Gion
Allison Jacee Huggett
Anthony Julio Munoz

Management

Logan Michael Adkison
Grant William Albers
Sheldon Michael Blubaugh
Bithiah C. Brandon
Connor Alexander Brett
Kevin Jabbar Brown
Samuel Thomas Budd

Hillary Elise Caldwell
Ronald Stanley Cerko
Kenneth Lavon Chambers
Cameron Keith Chancey
Robert Reid Chapman
Kyle Wayne Chenoweth
Alex Dewayne Devlin
David Edward Dobbs
Nicholas Steven Domitrovich
Andrew James Donahue
William Ray Donovan
Myles David Edwards
Adam Cory Fritz
Kyle Matthew Gillespie
Ryan Andrew Harder
Samuel G. Hope
Nicholas Wyatt Horton
Jacob Clark Hurrell
Imad Hasan Jeddy
Michael Kenneth Jeffries
Kala Rene Jennings
Shaun Nolan Jorden
Alexander Khatskin
Maxwell Alexander Kraft
Tyler Lees Lehnert
Mari Etta Lewis
Tyler Gregory Martin
Keegan Martin O'Brien
Gabrielle Linn Perdieu
Alex William Pollard
Nathaniel David Reed
Adam Joseph Rogers
Danielle Marie Schermaul
Thomas Joseph Schermaul
Patrick Roman Sinwelski
David Lewis Slaton
Andrew Tyler Tucker
Larce Christopher Wells
Travis Michael Wheeler
Eryn Michelle Williams
McKenzie Marion Winter
Aaron Fletcher Wynne

Marketing

Alison Marie Balthazor
Joseph Zachary Beck
Kailynd Patrice Beck
Grant Bernard Benten
Adam Ross Borgschulte
Robert William Brangle III
Katelyn Sue Buescher
Kevin Frank Casey
Jack Thomas Caywood
Mackenzie Patrick Darragh
Alexander Jordan Everett
Nicholas John Fiquette
Oliver Lawrence Fisher
Kyle Michael Fitzpatrick
Devon Lamont Foster

Donovan Justus Grothaus
Audrianna Carlean
Higginbotham
Chance Dakota Hutchison
Valerie Lee Kelley
Justin Jaehwan Kim
Zachary Michael Kneemiller
Jonathan Philip Krah
Kevin Patrick Kuehn
Lyndi Elizabeth Leesman
Kyle Scott Lewis
Jacob Taylor Longhta
Bailey Elizabeth Lovell
George Lubrino Lozano Jr.
Andrea Renee Martin
Jake Charles Miller
Ashley Lauren Noark
Mitchell John Porter
Lindsey Eileen Ralls
Garrett Julian Richards
Andrew Nicholas Ruhlman
John Michael Salva
Kenneth Dewayne Sanders II
Matthew Steven Seevers
Luke Christopher Seibel
Michael Patrick Shea
David Patrick Shoemaker
Megan Olivia Six
James Robert Skorburg
Olivia Christine Slay
Joshua Tyler Smith
Kirby Elizabeth Summers
Alexander Peter Talleur
Jessica M. Thurston
Stephen Christopher Voss
Neal Richard Wallis
Kristin Joyce Wayman

Real Estate

Thomas Joseph Allen
Jessica Anne Bednarko
Christina Gene Behnken
Joseph Frank Brancato
Amy Chen
Alexander James Dale
Chase Alan Frerking
Hayden Fletcher Harper
Cody Christopher Hilke
Eric Kenneth Judd
Adam James Kerschinske
Alex Joseph Marino
John Michael Rosa
Christopher Michael Shea
Brandon Jamal Spruill
Wesley Nolan Whitford
Collin Robert Willand

COLLEGE OF EDUCATION

BACHELOR OF EDUCATIONAL STUDIES

Educational Studies

Interdepartmental

Devon Alexandria Anzalone
 Laura Ann Cooke
 Cody Wayne Johnston
 Kathleen Louise Peters

BACHELOR OF SCIENCE IN EDUCATION

SUMMA CUM LAUDE

Secondary Education

Language Arts

Hillary Anne Switzer

BACHELOR OF SCIENCE IN EDUCATION

MAGNA CUM LAUDE

Middle School Education

Mathematics

Shelley Suzanne Freiburger

Secondary Education

Art Education

Abigail Elaine Creech
 Olivia Marie Vitale

Language Arts

Sabria Mustafa El-Kurbu

BACHELOR OF SCIENCE IN EDUCATION

CUM LAUDE

Middle School Education

Social Studies

Steve Daeyong Kim

Secondary Education

Art Education

Carly Shea Boyd

Language Arts

Courtney Marie Bromley

Mathematics Education

Neil Thomas Kliethermes

Music Education

Joshua Thomas Barbre

BACHELOR OF SCIENCE IN EDUCATION

Elementary Education

Elementary Education

Kileen Frances Casey
 Karen Ann Saettele

Middle School Education

Language Arts

Jacey Danielle Hodan

Mathematics

Ryan Thomas Zech

Science

Laura Ann Fuchs
 Payton Patricia Maddox

Social Studies

Daniel Robert Meyer

Secondary Education

Biology

Misha Emanoil
 Alexander D. Rorie

Chemistry

Jordan Elizabeth Peace

Language Arts

Brooke Alexandra Shoopman

Music Education

Erik Michael Ellwood

Social Studies

Morgan Alyse Buscher
 Nathan James Smallwood
 Emma Ruth Tiedemann
 Warren Oliver Whitaker

COLLEGE OF ENGINEERING

BACHELOR OF SCIENCE SUMMA CUM LAUDE AND HONORS SCHOLAR

Computer Science

Zhenni Hu
 Thomas Robert Weidmaier
 Bowei Xu
 Xutong Zhang

Information Technology

Thomas Robert Weidmaier

BACHELOR OF SCIENCE SUMMA CUM LAUDE - HONORS CERTIFICATE

Computer Science

Ryan Zachary Endacott

BACHELOR OF SCIENCE MAGNA CUM LAUDE

Computer Science

Jordan Lee Brennan
 Daniel Ryan Lasker
 Dan Aaron Silver

Information Technology

Lindsey Danielle Arnold
 Thomas Henry Riddick

BACHELOR OF SCIENCE CUM LAUDE

Information Technology

Courtney Renee Cooksey

BACHELOR OF SCIENCE HONORS SCHOLAR

Computer Science

Hang Cui
 Yohanes Patrik Handrianto

Information Technology

Hang Cui

BACHELOR OF SCIENCE

Computer Science

Miles Courtland Bruner III
 Brett Donald Brusda
 Cordell Jenkins
 Noah Kendle Leiter
 Heath Edward McKay
 Jason Daniel McQuinn
 Hiram Mbugua Njogu
 Lee Michael Presswood
 Amy Elizabeth Schmidt
 Brent Robert Thoenen
 Nathaniel C. Thompson
 Evans Gabriel Thornton

Huy Ngoc Quang Trinh
 Daniel Walter Troiani
 Charles Jorge Voegel

Information Technology

Zachary Scott Barnes
 Kyle Lynn Browning
 Kyle Raymond Carlson
 Atryino Andreas Dolon
 Jake Spencer Feldmann
 Adam Micheal Forbis
 Evan Frederick Gibler
 Matthew John Paul Hess
 Jonathan Caleb Kendrick
 Karl Nikolas Kosse
 Cory Eduard Loeffelman
 Jacob Clendenny Loft
 Jude Jerome Ogo
 Derek Michael Phillips
 Max Andrew Rodgers
 Caleb Milo Schmitt
 Zachary Alan Schneider
 Brian William Seelye
 Summer Renee Storie
 Lloyd John Terbrock
 Brent Robert Thoenen
 Jacob Paul Vandiggelen
 Charles Jorge Voegel

Bradey Yarbrough Whitlock
 Jordan Taylor Wolters

BACHELOR OF SCIENCE IN BIOLOGICAL ENGINEERING UNIVERSITY HONORS

Biological Engineering

Laura Joanne Evans

BACHELOR OF SCIENCE IN BIOLOGICAL ENGINEERING SUMMA CUM LAUDE

Biological Engineering

Connor Hawkins Darrough

BACHELOR OF SCIENCE IN BIOLOGICAL ENGINEERING MAGNA CUM LAUDE

Biological Engineering

Brennen Michael Day
 Patrick Lee Kirk
 Samuel Patrick Pautler

Continued on next page.

**BACHELOR OF SCIENCE
IN BIOLOGICAL
ENGINEERING
CUM LAUDE**

Biological Engineering
Laura Emily Moon
Grace Lee Simon

**BACHELOR OF SCIENCE
IN BIOLOGICAL
ENGINEERING
HONORS SCHOLAR**

Biological Engineering
Timothy Edward Butler
Benjamin Nicholas Menke
Colten Lawrence Snider

**BACHELOR OF SCIENCE
IN BIOLOGICAL
ENGINEERING**

Biological Engineering
Lindsey Flora Alberts
Arvin Charlz Bustos
Michael Bonifacio Cowan
Castleman
Austin Robert Davis
Hady Elmashhady
Cali Rae Fitzpatrick
Brian Patrick Gaffigan
Matthew Joseph Grimes
Conner Wesley Hansen
Amanda Emily Hill
Amanda Frances Hobbs
Jansen Reid Hoggard
Ji Young Hong
Aiden Joseph Lee
Tyler Zachary Malloy
Michelle Elizabeth Molter
Morgan Leigh Sloan
Rachel Adeline Stuck
Kathryn Mary Weinzirl

**BACHELOR OF SCIENCE IN
CHEMICAL ENGINEERING
SUMMA CUM LAUDE AND
HONORS SCHOLAR**

Chemical Engineering
Chandler Brian Est

**BACHELOR OF SCIENCE IN
CHEMICAL ENGINEERING
MAGNA CUM LAUDE AND
HONORS SCHOLAR**

Chemical Engineering
Hayley Erin Neebe

**BACHELOR OF SCIENCE IN
CHEMICAL ENGINEERING
CUM LAUDE AND HONORS
SCHOLAR**

Chemical Engineering
Jian Xu

**BACHELOR OF SCIENCE IN
CHEMICAL ENGINEERING
SUMMA CUM LAUDE**

Chemical Engineering
Bradley David Tucker

**BACHELOR OF SCIENCE IN
CHEMICAL ENGINEERING
MAGNA CUM LAUDE**

Chemical Engineering
Jessie Michael Jennings

**BACHELOR OF SCIENCE IN
CHEMICAL ENGINEERING
CUM LAUDE**

Chemical Engineering
Biochemical
Bryan David Anderson
Michael Stephen Castner

**BACHELOR OF SCIENCE IN
CHEMICAL ENGINEERING
HONORS SCHOLAR**

Chemical Engineering
Xavier Francis Wegmann

**BACHELOR OF SCIENCE IN
CHEMICAL ENGINEERING**

Chemical Engineering
Abdullah Khalid Alkhonaini
Atsu Atitsogbui
Kathryn Anne Chettle
Marco Antonio Delarosa
Nicholas Michael Durbin
Mitchell Craig Kramer
Scott Victor Monter
Jonathan Albert Olson
Dan Tyler Paterson
Sean Thomas Shannon
Sonal Anupama Siriwardana
Andrew Kent Soebbing
Kelly Marie Suman
Adam Michael Thiedke
Forrist Thomas Edward
Vilmaire

Erik Wayne Woltjen

Biochemical

Bryan Maxwell Williamson

**BACHELOR OF SCIENCE IN
CIVIL ENGINEERING
CUM LAUDE - UNIVERSITY
HONORS**

Civil Engineering
Zane Hubbard Clark

**BACHELOR OF SCIENCE IN
CIVIL ENGINEERING
CUM LAUDE**

Civil Engineering
Cullan Avery Even
Elizabeth Clare Leingang
Kenneth Ryan Meek

**BACHELOR OF SCIENCE IN
CIVIL ENGINEERING**

Civil Engineering
Jonathan Wade Batchelor
Lauren Elizabeth Boerner
Brandon Dale Colbert
Bradley William Cooley
James R. Dawson
Anthony John Eggert IV
Allison Claire Gowen
Garrett Lee Hager
Ryan David Halley
Edward James Harris
Brendan N. Kuehn
Alison Nicole Macnair
Hannah Marie Morrey
Adam Michael Murphy
Steven Nicholas Nagrich
Edward Joseph O'Brien
Anthony Reyes
William Stuart Scheible
Brian Price Silvestri
Matthew James Swartz
Matthew Jared Watson

**BACHELOR OF SCIENCE IN
COMPUTER ENGINEERING
SUMMA CUM LAUDE AND
HONORS SCHOLAR**

Computer Engineering
Michael Alan Luechtefeld

**BACHELOR OF SCIENCE IN
COMPUTER ENGINEERING
CUM LAUDE - HONORS
CERTIFICATE**

Computer Engineering
Brendan Jared Alvey

**BACHELOR OF SCIENCE IN
COMPUTER ENGINEERING
SUMMA CUM LAUDE**

Computer Engineering
Benjamin Gregory Pugh

**BACHELOR OF SCIENCE IN
COMPUTER ENGINEERING
MAGNA CUM LAUDE**

Computer Engineering
Christopher Reinert Arnold
Shining Sun

**BACHELOR OF SCIENCE IN
COMPUTER ENGINEERING
CUM LAUDE**

Computer Engineering
Barrett Andrew Lamb

**BACHELOR OF SCIENCE IN
COMPUTER ENGINEERING**

Computer Engineering
John Sawyer Barden
Corben Crismon Gailey
Nicholas Lloyd Halderman
Teekayu Klongtruajrok
Jan Philipp Mayer
Khaila Ambrea Pate

Dmytro Pushkin
Shane Taylor Raboin
Seth Daniel Rewerts
Jacob Landon Sweet
Benjamin Aaron Temple
Adam Matthew Zeller

**BACHELOR OF SCIENCE
IN ELECTRICAL
ENGINEERING
SUMMA CUM LAUDE AND
HONORS SCHOLAR**

Electrical Engineering
Michael Alan Luechtefeld

**BACHELOR OF SCIENCE
IN ELECTRICAL
ENGINEERING
MAGNA CUM LAUDE AND
HONORS SCHOLAR**

Electrical Engineering
Xiaowen Xu

**BACHELOR OF SCIENCE
IN ELECTRICAL
ENGINEERING
CUM LAUDE - HONORS
CERTIFICATE**

Electrical Engineering
Brendan Jared Alvey

**BACHELOR OF SCIENCE
IN ELECTRICAL
ENGINEERING
SUMMA CUM LAUDE**

Electrical Engineering
Michael Stuart Braverman

**BACHELOR OF SCIENCE
IN ELECTRICAL
ENGINEERING
MAGNA CUM LAUDE**

Electrical Engineering
Christopher Reinert Arnold
Mu Li
Shining Sun

**BACHELOR OF SCIENCE
IN ELECTRICAL
ENGINEERING
CUM LAUDE**

Electrical Engineering
Ni Ke
Ao Li
Zenan Wang

**BACHELOR OF SCIENCE
IN ELECTRICAL
ENGINEERING**

Electrical Engineering
Jordan Perry Agard
Mohammad Razu Ahammed
John Sawyer Barden
Joshua David Bristow
Nolan Alexander Carrow

Continued on next page.

Samuel Albert Dickerson
 Corben Crismon Gailey
 Nicholas Lloyd Halderman
 Kyle Martin Kalowski
 David William Lindbloom
 Jan Philipp Mayer
 Christian Dale McCluskey
 Dmytro Pushkin
 Shane Taylor Raboin
 Seth Daniel Rewerts
 Connor Steven Rockholm
 Jacob Landon Sweet
 Haoran Xu
 Adam Matthew Zeller

**BACHELOR OF SCIENCE
 IN INDUSTRIAL
 ENGINEERING
 HONORS SCHOLAR**
Industrial Engineering
 Michael James Huber

**BACHELOR OF SCIENCE
 IN INDUSTRIAL
 ENGINEERING**
Industrial Engineering
 Yahya Khaled Y Alsulaim
 William Zachary Bargman
 Nick Timothy Cain
 Kristen Marie Cetkovic
 Dylan Alexander Eades
 Jeff Rush Holiday
 Ahad Hosseini
 Daniel Louis Lowery
 Garrett Charles Meier
 Tim K. Merkel
 Andrew Joseph Polizzi
 Taran Ray Winnie

**BACHELOR OF SCIENCE
 IN MECHANICAL
 ENGINEERING
 MAGNA CUM LAUDE AND
 HONORS SCHOLAR**
Mechanical Engineering
 Benjamin Foster Davis

**BACHELOR OF SCIENCE
 IN MECHANICAL
 ENGINEERING
 SUMMA CUM LAUDE**
Mechanical Engineering
 Marco Antonio Hinojosa

**BACHELOR OF SCIENCE
 IN MECHANICAL
 ENGINEERING
 MAGNA CUM LAUDE**
Mechanical Engineering
 Emily Rose Hall
 Kevin Lee Pearia
 Haelena Allyson Schwemmer
 Tyler Andrew Wood

**BACHELOR OF SCIENCE
 IN MECHANICAL
 ENGINEERING
 CUM LAUDE**
Mechanical Engineering
 Eli Walker Bartley
 Kevin James Coleman
 Collin Ryan Crossley
 Brett Allen Davis
 Kevin William Doyle
 Matthew Eathan Riehn
Aerospace Engineering
 Geno Joseph Gagliarducci

**BACHELOR OF SCIENCE
 IN MECHANICAL
 ENGINEERING
 HONORS SCHOLAR**
Mechanical Engineering
 Rachel Elizabeth Hough

**BACHELOR OF SCIENCE
 IN MECHANICAL
 ENGINEERING
 HONORS CERTIFICATE**
Mechanical Engineering
 Cynthia Lauren Koehler

**BACHELOR OF SCIENCE
 IN MECHANICAL
 ENGINEERING**
Mechanical Engineering
 Christopher Michael Address
 Bradley John Armstrong
 Nikolas Adam Bascue
 Matthew Ryan Bencomo
 Daniel Matthew Berger
 Thomas Levi Bertken
 Kyle Andrew Bialczak
 Anthony Joseph Bindbeutel
 Jacob Barkley Bross
 Johanna Liisa Bryan
 Evan Louis Buchanan
 Branden Cody Cambron
 Andrew Wallis Canaday
 Matthew Fagan Cassidy
 Brandon Taylor Casteel
 Ryan James Cox
 Michael Patrick Cronin
 Chance F. Davis
 Curtis Lee Dittmer
 Mitchell Louis Donahoe

Braden Robert Donaldson
 Kelly Edlyn Draehn
 Nicholas Robert Eastwood
 Seth Alan Fennessey
 Matthew Robert William Garcia
 Samuel Joseph Hallett
 Justin Brice Heberlie
 Nathan James Hewlett
 Ryan Patrick Hines
 Austin Dee Hinkle
 Samuel Blake Holiman
 Eric Michael Holm
 Joseph Michael Hopfinger
 Huston Lee Jack
 James Michael Joyce III
 Kaitlyn Renee Kahle
 Colton Skyler Lee
 Brenden Jeffrey Lowe
 Daniel Scott Lynch
 Justin David Lynn
 Joseph Ethan Marshall
 Mary McClannahan
 Sean Patrick Moehling
 Ryan Jacob Mortensen
 Louis Quincy Murray
 Andrew Charles Newman
 Travis Mitchell Perry
 Yuxian Qi
 Wesley Edward Register
 Dylan Lyle Rodes
 Steven Gregg Scheller
 Xiang Tao
 Ryan Patrick Tulley
 Daniel Joseph Wiener
 Lingyu Yi
Aerospace Engineering
 Bilal Kamal Hussain

COLLEGE OF HUMAN ENVIRONMENTAL SCIENCES

**BACHELOR OF SCIENCE-
 HUMAN ENVIRONMENTAL
 SCIENCES**
SUMMA CUM LAUDE
Architectural Studies
Interior Design
 Lindsay Elizabeth Webb
Nutritional Sciences
Nutrition & Fitness
 Madison Lee Bridges

**BACHELOR OF SCIENCE-
 HUMAN ENVIRONMENTAL
 SCIENCES**
MAGNA CUM LAUDE
Personal Financial Planning
Personal Financial Planning
 Jaclyn Paige Richardson

Textile and Apparel Management
 Weiwei Hong
 Courtney Montana King

**BACHELOR OF SCIENCE-
 HUMAN ENVIRONMENTAL
 SCIENCES**
CUM LAUDE
Architectural Studies
Interior Design
 Olivia Rose Taylor
*Human Development and
 Family Studies*
Child Development & Education
 Rachel Elisabeth Job
Child Life Specialist
 Tailor Lorean Schlotzhauer
 Kayla Elizabeth Winking

**BACHELOR OF SCIENCE-
 HUMAN ENVIRONMENTAL
 SCIENCES**
Architectural Studies
Architectural Studies
 James Sean Tyra
Interior Design
 Courtney Renee Carpenter
 Emily Rae Clements
 Samantha Noel Hurrell
 Lauren Marie Lueckenotte
 Regan Alessandra Wiley
**Human Development and
 Family Studies**
Child Development & Education
 Paige Marie Brokaw
 Ellie Lucille Edelman
 Jamon Remon Finley

Sheldon Leo Gerau
 Sara Fay Moellenhoff
 Katelyn Danielle Parks
Child Life Specialist
 Joanne Kathryn Moore
 Brittany Elizabeth Riley
 Melanie Lynn Weinrich
**Family & Consumer Science
 Education**
 Devon Rae Moltzan
 Alexandria Nicole Tunnicliff
 Paige Ashley West
 Emily Margaret Wilhelm

Continued on next page.

Family & Lifespan Development

Sarah Jessica Hoeft
Elizabeth Grace McKay
Chaquill Jenae Merriweather
Katherine Elizabeth Millar
Emily Ann Smith

Nutritional Sciences

Nutrition & Fitness

Maggie Ruth Algya
Lauren Nicole Boland
Morgan Elizabeth Chaney
Paige Alex Childs
Catherine Elizabeth Goodspeed

Jacqueline Elaine Hermanson

Victoria Marie Hieken
Erica Dawn Keeney
Jiawen Liu
Katherine Elizabeth Manning
Cameron Joseph Price
Jill Olivia Rehtien
Samantha Lee Santiago
Brenden Matthew Sapp
Aaron Michael Sprouse

Nutritional Sciences

Lauren Brionne Whitmore

Personal Financial Planning

Personal Financial Management Services

Troy Christian Bergeron
Victor Henry Chmura
Peter Hughes Colman
Tyler Scott Detjen
William Jacob Duckworth
John Percy Huston V
James Michael Leopold
John Daniel Nerling
Nathan Ray Nunnery
Xihan Wang
John Bradford Yarbrough Jr

Textile and Apparel Management

Chloe Marie Adcock
Margaret Gertrude Armstrong
Donovan Edward Charleston
Munish Annalise Fitzjames
Alyssa Lane Gutkin
Kathryn Alexandra Holmen
Devon Nicole Lipe
Katie Michelle Marino
Weston Lee Moore
Elizabeth Anna Schoeffel
Grace Nicole Ward

SCHOOL OF SOCIAL WORK

BACHELOR OF SOCIAL WORK

MAGNA CUM LAUDE

Social Work

Taylor J. Braun
Taylor Michelle Carr
Shannon Catherine McAvoy
Laree Ann Moritz
Jennifer Rae Gallup Shearin
Grace Elizabeth Wildenhaus

BACHELOR OF SOCIAL WORK

CUM LAUDE

Social Work

Laura Michelle Daily
Madeline Mary Senay
Sophia Nieves Silva

BACHELOR OF SOCIAL WORK

Social Work

Emily Ann Barbee
Macey Alexandra Bratton
Susan Rose Burd
James Mikel Capes
Susannah Jane Carter
Chloe Payton Casteel
Amy A. Feeler
Valarie Lenore Harper
Brittany Kathleen Hursh

Alissa Ann Jett

Emily Anne Love
Mariah Ann Morgan
Adrian Jean O'Neill
Chloe Elizabeth Pavia
Katrinya Rachel Rankin
Shelby Louann Reed
Sarah Nicole Ronecker
Taylor Suzanne Starr
Kaitlin Christine Taube
Hanna Sul Yu

SCHOOL OF HEALTH PROFESSIONS

**BACHELOR OF HEALTH
SCIENCE
SUMMA CUM LAUDE -
HONORS CERTIFICATE
Occupational Therapy**

Amanda Therese MocarSKI

**BACHELOR OF HEALTH
SCIENCE
SUMMA CUM LAUDE
Communication Science and
Disorders**

Claire Margaret Custer

Health Science

Emily Anne Sheehey

Occupational Therapy

Paige Jacqueline Bernat

Anna Rose Lourens

Sarah Marie McCrate

Hannah Jeanne Ruzicka

Ciara DaLynn Schlotzhauer

Caroline King Thompson

Emily Elizabeth Triller

Alexis Marie White

Melissa Jean Willoughby

**BACHELOR OF HEALTH
SCIENCE
MAGNA CUM LAUDE**

Health Science

Erica Lane Eagleburger

Jessica Rae Fienup

Justine Nicole Kaminski

Jordan Elizabeth Lampe

Michael James Nelson

Abigail Jordan Niemeyer

Richard Houston Rash

Kristyn Caroline Sanders

Cassidy Alyse Shannon

Occupational Therapy

Caitlin E. Boyd

Amy Lynn Dryden

Haley Jordan Evans

Lauren Nicole Galbierz

Sarah Kathleen Goetges

Gabrielle Elizabeth Heckman

Laurynne Michelle Ann

Hillenburg

Alexandra Lillian

Kohlschreiber

Karin Rose Seley

Shelby Lynn Thorns

Katherine Nicole Tuholski

**BACHELOR OF HEALTH
SCIENCE
CUM LAUDE**

**Communication Science and
Disorders**

Katelyn Mary McCormack

Health Science

Sarah Michelle Billingsly

Corey Jonathan Cavitt

Samantha Dianne Cockrell

Monica Masson Derbes

Sara Elizabeth Durbin

Brittany Nicole Elsbree

Lauren Emma Flynn

Rachel Marie Hoang

Lydia Catherine Jacobsen

Hannah Colleen Jeanis

Katharine Helen Joiner

Jennifer Margaret Kelly

Kim Thoa Huynh Nguyen

Alex Lee O'Laughlin

Molly Michelle Scharnhorst

Maria Gabrielle Smith

Occupational Therapy

Lauren Elizabeth Boyer

Nicole Marie Coates

Jourdan Anne Cunningham

Amanda Catherine Lewis

Kyle Joseph Montalto

Laura Kessler Turner

Ali Claire Vandeloo

**BACHELOR OF HEALTH
SCIENCE**

Health Science

Casey Gulbrand Acton

Kelsie Lauren Adamson

Alya Mansour Alluwaymi

Afton Nicole Anderson

Emily Kathryn Anderson

Kaitlyn Joy Bailey

Snowbia Denay Sharon Barnes

Morgan Simone Beyszelance

William Birenbaum

Nicholas Charles Bishop

Thomas Shane Black

Christopher Blackwell

Daniel Wendell Blake

Claire Homan Blankenship

Damein Ross Blanton

Mason Timothy Boehm

David Allen Bonuchi

Shelby Kristine Braun

Megan Michelle Brennan

Eric Kempff Brown

Allyssa Ann-Marie Bunner

Cameron L. Burton

Ashley Janell Bush

Aaron Malcolm Bush-Kizine

Shelby Lynn Campbell

Michelle Ann Carter

Michael Garth Chotoosingh

Elizabeth Jo Chrisman

Samuel Owen Christoferson

Alyssa Jane Cockerline

Zoe Tai Wen Coppotelli

Hannah Elizabeth Cottrell

Alexandra Elizabeth Crannell

Whitney Kirsten Dahlstrom

Sidney Danielle Davidson

Rachael Dixon-Moore

Christon James Dowling

Eric James Eggemeyer

Joseph Ray Figueroa

Ashley K. Finney-Nelson

Lauren Nicole Fitts

Haley Marie Flanagan

Evona Avot Franceschelli

Eric James French

Kristen Lynn Fritts

Andrew John Fruits

Aimee Katherine Gittemeier

Nicole Marie Godard

Austin Thomas Gore

Cynthia Wood Gray

Mercedes Aurelia Gutierrez

Ramone Lamar Hankle

Cedric C. Harris

Rakeita Dawnya Harris

Abbey Christine Hartley

Mercedes Ashley Rose Hirsch

Sophia Elaine Hoag

Ashley Nicole Hoener

Joseph Matye Hoffmann

Renita Marie Holder

Katie Ann Holzhauer

Leonard Imbula

Jason Lin Isaacs

Madeline Corey Ishmael

Breeya La Shay Johnson

Stephanie Nicole Johnson

Nicholas Aaron Jones

Amela Na Kajtezovic

Bryan Michael Kanzler

Valerie Lee Kelley

Abigail Elizabeth Killion

Jennifer Loren Kirk

Hanna Jennifer Perotti Klein

Alexander Daniel Klimenko

Katherine Allyse Koch

Benjamin Bart Koestner

Kris Anthony Korinek

Scott Alexander Kremmel

Joshua Daniel Lane

Stefanie Rianne Lang

James Charles Lawless

Allison Marie Lawson

Danielle Marilyn Lecompte

Erica Nicole Lee

Matthew Lee Leighton

Diana Barnes Lesh

Elizabeth Anne Link

Victoria Lee Little

Luis Lopez

Samantha Jane Maddison

Joseph Michael Maggio

Colynn Jo Mahan

William Lawson Martin

Sarah Angela McCarthy

Shannon Gail McClellan

Victoria Evon McGhee

Kelly Marie McGonigle

Jason William McIntosh

Jordan Paige McNab

Eric Stephen Meyer

Michael Philip Meyers

Maysa Djennae Montgomery

Monique Monet Montgomery

Taylor N. Moritz

Michael Anthony Murphy

Kayla Hewett Murray

Mark Joseph Nemes

Joseph Michael Newbanks

Alyson Marie Nowell

Rachel Dean O'Keefe

Haley Anita Patrick

Sara Nicole Pilgrim

Daniel David Pinkerton

Freedom Danielle Pollard

Brennan Scott Porter

Holly Nicole Raffurty

Angela Nichole Randazzo

Jasmine Veronique Randle

Jill Olivia Rechten

Matthew Allen Rehkop

Emily Anchan Ridgeway

Clarissa N. Rieck

Elisabeth Christina Riggins

Hallie Brooke Roach

Meghan Elizabeth Ross

Reginald D. Ruffin Jr

Tyler James Rusboldt

Olivia Ann Rymer

Jennifer Aryn Salkos

Stephen Michael Scherer

Kayla Michelle Schleper

Makayla Jean Schmidt

Claire E. Serati

Corbin Ferrell Shelton

Erin Rose Simon

Andreal Re'Nee Smith

Jamie Smith

Patrick Michael Spain

Elizabeth McCord Spaulding

Madeleine Claire Stock

Shelbey Ann Stuckmeyer

Quinn Andrea Sutton

Thomas Awkit Sutton

Matthew Stephen Tabor

Patrick Kyle Taylor

Aaron Tekle

Katherine Rose Tirkel

Rachel Elizabeth Tobin

Daniel Jacob Ullrich

Andrea Nicole Vaughan

Continued on next page.

Madyson Celeste Weaver
Matthew Keith Wilcox
Kaamilya Sabreen Williams
Jessica Monay Willis
Kayla Jo Wilson
Alexandra Dominique Woods
Rachael Elise Young
Sean Michael Zimmerman

Occupational Therapy
Paige Breanne Baumgartner
Alyson Nicole Bockstetter
Kaitlyn Lee Wilkinson
Radiologic Sciences
Radiography
Jessica Ann Dines

Respiratory Therapy
Shawn Michael Alleman
Desiree Julianne Holterman
Sandra Lee Maurer

SCHOOL OF JOURNALISM

**BACHELOR OF
JOURNALISM
SUMMA CUM LAUDE -
HONORS CERTIFICATE**
Journalism
Strategic Communication
Alix Cay Carruth
Kiersten Elise Kuc
Katrina Noel Molholm

**BACHELOR OF
JOURNALISM
MAGNA CUM LAUDE -
HONORS CERTIFICATE**
Journalism
Strategic Communication
Hannah Camille Franz

**BACHELOR OF
JOURNALISM
CUM LAUDE - HONORS
CERTIFICATE**
Journalism
Magazine Journalism
Maxwell Peter Havey
Radio-Television
Thomas Joseph Barclay
Strategic Communication
Abby Kolbe Crites
Alison Marie Glomski

**BACHELOR OF
JOURNALISM
MAGNA CUM LAUDE**
Journalism
Photojournalism
Jennifer Elizabeth Justus
Radio-Television
Maria Jose Valero Dosal
Strategic Communication
Calvin Joseph Dickherber
Sara Kathleen Naatz

**BACHELOR OF
JOURNALISM
CUM LAUDE**
Journalism
Magazine Journalism
AnDrea Monique Jackson
Alexandra Stacey Tucker
Print and Digital News
Kyle Joseph Lock
Strategic Communication
Jenna Kristine Allison
Yaxuan Deng
Jonathan Bryce Hambacker
Molly Katelyn Henderson
Jamie Marie Ras
Carlin Claire Wagner
Xu Ye

**BACHELOR OF
JOURNALISM
HONORS CERTIFICATE**
Journalism
Magazine Journalism
Carolyn Lehmann
Lauren Marie Rutherford

**BACHELOR OF
JOURNALISM**
Journalism
Convergence Journalism
Elizabeth Jean Davidson
Xiaosu Tian
Susu Yan
Magazine Journalism
Megan Kay Armstrong
Sarah Elizabeth Dettmer
Taylor Elise Fox
Jordan Olin Kuehne
Rebecca Khessa McGee
Casey Katherine Nighbor
Hannah Christine Pederson
Grace Catherine Pinegar

Sara Anne Trimble
Jessica Elizabeth Vaughn
Sarah Christine Walsh
Photojournalism
Lauren Melissa Kastner
Tiffany Melecio
Marissa Mildred Weiher
Print and Digital News
Michael Gerald Alvey
Ryan Richard Collins
Mitchell Benjamin Ferman
Reid Ridings Foster
Jiyue Huang
Chanelle June Koehn
Jack Stephen Suntrup
Crystal Theresa Thomas

Radio-Television
Julia Marie Avery
Alexander Elliott Brown
Landon John Burke
Cody Redford Crutchfield
Jasmine Annise Dell
Brady Gene Finn
Christopher Richard Gothner
Samuel Arthur Knef
Hannah Rose Knight
Jeffrey Ray Militzer
John Michael Zupon Jr.
Strategic Communication
Kahlee Marie Andresen
Benjamin Joseph Badofsky
Michael Jonathan Bauer
Emily Marie Brisso
Jazmin Michole Burrell
Taylor John Christmas
Paige Olivia Dye
Anoria Sabina El Safadi
Robert Austin Fish
Leah Diane Forester
Drew Taylor Grier
Nicholas John Hathaway
Karim Jahar Howard

Avenly Paige Jones
Katherine Elizabeth Jones
Samantha Erin Kintz
Eric Edward Knapp
Abigail Jordan Krauch
Lauren Jean Merideth
John Douglas Overbeck Jr.
Gahee Park
Michelle Ashley Proctor
Savannah Lynn Reed
Michael James Sojka
Rachel Ann Strohmeyer
Stephanie Kindji Tebe
Anthony James Wilk
Natasha Chio Ygsi

SINCLAIR SCHOOL OF NURSING

**BACHELOR OF SCIENCE IN NURSING
MAGNA CUM LAUDE - HONORS CERTIFICATE**

Nursing
Emma Brynn Shannon

**BACHELOR OF SCIENCE IN NURSING
SUMMA CUM LAUDE**

Nursing
Kelsey Elizabeth Allen
Kelsey Taylor Hicks
Elizabeth Mae McClure
Emily Elizabeth Tegerdine

**BACHELOR OF SCIENCE IN NURSING
MAGNA CUM LAUDE**

Nursing
Shannon Elizabeth Allen
Kaitlin Mackenzie Echele
Haley Raeann Hummer
Emily Grace Jensen

**BACHELOR OF SCIENCE IN NURSING
CUM LAUDE**

Nursing
Kelsey Marie Bolger
McKenzie Paige Ewigman
Meghan Christine Halsey
Devon Sarah Schatz
Sarah Murphy Simmons
Marina Kay Steinhauer
Grace Cathryn Wallden
Katherine Marie Woodruff

**BACHELOR OF SCIENCE IN NURSING
HONORS CERTIFICATE**

Nursing
Ashton Ann Moritz

BACHELOR OF SCIENCE IN NURSING

Nursing
Alexandria Marie Blakemore
Elizabeth Marie Bowdoin
Lindsay Mary Calhoun
Mary Katherine Carroll
Guada Marie Carter

Maria Lourdes Carter
Meagan Faye Chamaoun
Xuanbo Chen
Erin Elizabeth Connelly
Courtney Nicole Dalton
Lauren Elizabeth Dawson
Luke Wayne Dessain
Julia Ann Diller
Katherine Sydney Douglas
Bridget Ann Fangman
Kendall Marie Farnsworth
Amber Dawn Firebaugh
Natalie Maria Fischer
Lindsey Elizabeth Hanaway
Elley Meredith Hellwege
Jessica Anne Huebner
Mackenzie Jane King
Courtney Marie Kiobassa
Abigail Patricia Klatch
Peri Kumiko Knobbe
Grace Elizabeth Kohlmaier
Desiree Elizabeth Laubert
Emily Kay Loethen
Lana Luong
Jennifer M. Martin
Alexander Richard Matthes
Kelsey Marie May

Carly Jo McClelland
Christopher James McCoy
Lindsay Marie McDowell
Justin Alexander McNeeley
Valarie Ann Michael
Rachel Marie Miller
Jessica Lauren Morrow
Taylor Alexandria Noack
Marissa Colette North
Brittany Ann O'Brien
Kelsey Elizabeth Ortmann
Cheryl Lynn Parsons
Katlyn Anne Pope
Brittany Ann Powell
Kaitlyn Norma Reynolds
Melanie Elizabeth Robben
Tiffany A. Roesch
Samantha Caroline Schambach
Nicholas Anthony Schasch
Melissa Frances Shultz
Abigail Brianna Skinner
Hunter Douglas Smith
Nathan Wayne Uthe
Christina Lee Wassell
Emilie Toy Winn
Maggi Rose Wolfe

RESERVE OFFICERS TRAINING CORPS COMMISSIONS

ARMY ROTC
Cadets are commissioned as Second Lieutenants, US Army
Vanessa Pride

NAVY ROTC
Midshipmen and Officer Candidates are commissioned as Ensigns, US Navy or Second Lieutenants, US Marine Corps
Ensign, U.S. Navy
Scott Victor Monter
Connor Steven Rockholm
Second Lieutenant, U. S. Marine Corps
Ryan Jacob Mortensen

AIR FORCE ROTC
Cadets are commissioned as Second Lieutenants, US Air Force
Aron Michael Aycock
Julia Ann Diller
Corey James Stengel
Richard Anthony Woodruff

ALMA MATER

OLD MISSOURI

*Old Missouri, fair Missouri!
Dear Old Varsity,
Ours are hearts that fondly love thee.
Here's a health to thee!
Proud art thou in classic beauty
Of thy noble past.
With thy watchwords, honor, duty,
Thy high fame shall last.
Every student, man and maiden,
Swell the glad refrain,
'Till the breezes, music laden,
Waft it back again.
Proud art thou in classic beauty
Of thy noble past.
With thy watchwords, honor, duty,
Thy high fame shall last.*

--	--	--

University Libraries
University of Missouri

Digitization Information Page

Local identifier Commencement2015December

Source information

Format Book
Content type Text with images
Source ID Gift Copy
Notes Pages 000c & 000d are from an insert.

Capture information

Date captured September 2023
Scanner manufacturer Fujitsu
Scanner model fi-7460
Scanning system software ScandAll Pro v. 2.1.5 Premium
Optical resolution 600 dpi
Color settings 24 bit color (for front cover) & 8 bit grayscale (for rest)
File types tiff
Notes

Derivatives - Access copy

Compression Tiff: LZW compression
Editing software Adobe Photoshop
Resolution 600 dpi
Color color (for front cover) & grayscale (for rest)
File types tiff
Notes Images cropped, straightened, brightened...