

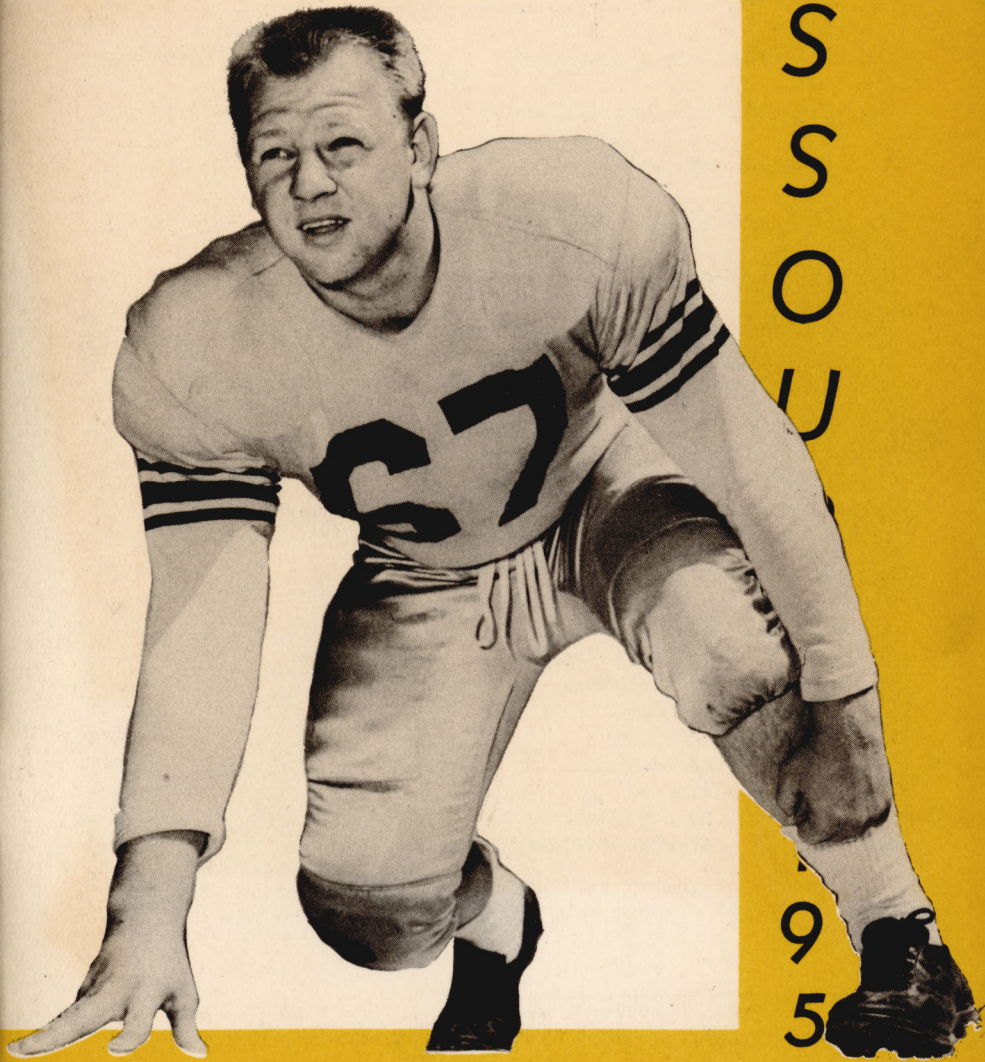
mo. U. Athletics

9-15-50  
18525

Reference Department

# MISSOURI FOOTBALL

## 1950



M  
I  
S  
S  
O  
U

9  
5

0

PRESS, RADIO AND TV BROCHURE

## 1950 SCHEDULE

Sept. 30--Clemson at Columbia . . . . .	2:00 p.m.*
Oct. 7--S. M. U. at Columbia . . . . .	2:00 p.m.
Oct. 14--Kansas State at Manhattan . . . . .	2:00 p.m.
Oct. 21--Iowa State at Columbia . . . . .	2:00 p.m.
Oct. 28--Okla. A & M at Stillwater . . . . .	1:30 p.m.
Nov. 4--Nebraska at Lincoln . . . . .	2:00 p.m.
Nov. 11--Colorado at Columbia . . . . .	2:00 p.m.
Nov. 18--Oklahoma at Norman . . . . .	2:00 p.m.
Nov. 23--Kansas at Columbia (Thanksgiving) . . . . .	2:00 p.m.
Dec. 1--Miami at Miami, Fla. (night) . . . . .	8:15 p.m. (EST)

\* All times are Central Standard, unless otherwise specified.

### 1949 SCORES AND ATTENDANCE

Missouri 34 -- Ohio State . . . . .	35	(66,510)
Missouri 27 -- S. M. U. . . . .	28	(58,000)
Missouri 21 -- Oklahoma A & M . . . . .	7	(28,500)
Missouri 27 -- Illinois . . . . .	20	(42,184)
Missouri 32 -- Iowa State . . . . .	0	(18,000)
Missouri 21,-- Nebraska . . . . .	20	(29,000)
Missouri 20 -- Colorado . . . . .	13	(17,000)
Missouri 7 -- Oklahoma . . . . .	27	(37,152)
Missouri 34 -- Kansas . . . . .	28	(40,500)
Missouri 34 -- Kansas State . . . . .	27	(20,000)
Missouri <u>7</u> -- Maryland (Gator Bowl) <u>20</u> . . . . .		<u>(22,000)</u>
Totals 264	225	378,846

This brochure has been prepared as a reference for the press, radio, and TV covering the Tigers. For additional information--press tickets, pictures, etc. -- please contact: BILL CALLAHAN, Sports Publicity Director, University of Missouri.

Office phone -- 9303 . . . . . Home phone -- 1-5544

# UNIVERSITY OF MISSOURI 1950 FOOTBALL

for

Press, Radio, and TV

## TABLE OF CONTENTS

Ol' Mizzou Briefs . . . . .	2
The Athletic Department Staff . . . . .	2
Don Faurot . . . . .	3
Don Faurot's All-time Record . . . . .	4
The Coaching Staff . . . . .	5
About the Players . . . . .	8
Returning Lettermen and Lettermen Lost . . . . .	17
1950 Football Roster . . . . .	18
Mizzou Football -- 1950 . . . . .	20
University of Missouri . . . . .	22
Officials for Mizzou's 1950 Games . . . . .	23
Facts, Figures on 1950 Opponents . . . . .	24
Missouri's All-time Scores Against '50 Opponents . . . . .	26
1949 Big Seven Standings . . . . .	29
Conference Football Champions . . . . .	29
Tigers' 1949 Game-by-Game Statistics . . . . .	30
Individual Statistics -- 1949 . . . . .	30
Missouri's All-time Football Records . . . . .	31
Mailing List . . . . .	35
Tigers' 1949 All-Opponent Team . . . . .	35
Missouri's All-Conference Selections . . . . .	36
Missouri's Athletic Committee . . . . .	36

JOHN KADLEC on front cover



## DON FAUROT

*Director of Athletics  
and  
Head Football Coach*



Trim, tanned, and T-splitting is Don Faurot, one of the nation's top football coaches who has come up through the ranks at the University of Missouri as a player, head coach, and finally athletic director.

Faurot, now a brisk and still black-haired 48, begins his 13th head coaching season at Mizzou in 1950. Behind him are 21 collegiate coaching campaigns. He was hired as the Tigers' grid mentor in 1935 after a nine-year coaching stint at Kirksville (Mo.) State Teachers College.

The Faurot record has been a productive one. After 21 autumns, it reads -- 137 games won, 52 lost, and 10 tied. Only once--in 1937--has his team lost

more games than it won. . . And except for the 1935 season, his teams never have fallen below a tie for third in the conference.

At Kirksville, Faurot compiled a 63-13-3 record. His clubs had won seven M.I.A.A. conference championships, and had piled up a winning streak of 26 straight when Missouri beckoned.

His stay at Missouri has netted 74 wins against 39 defeats and 7 ties. He steered the Tigers to their first Big Six title in 1939, and repeated in 1941 and 1942. Those were the years, too, that produced three Tiger All-Americans--quarterback Paul Christman, center Darold Jenkins, and halfback Bob Steuber. The '39 squad bagged Mizzou's first bowl (Orange) invitation--and three other Faurot-tutored teams have since figured in the post-season picture. These were the 1941 (Sugar), 1948 (Gator), and 1949 (Gator) outfits. The 1945 Tigers under Coach Chauncey Simpson went to the Cotton Bowl.

Faurot's offensive creation--the Split T formation--is generally considered to be football's newest wrinkle. He innovated the system at

Missouri in 1941, and today its imprint on the national grid scene is everywhere apparent. Although the Split T did not come into general use until the post-World War II period, thirteen major colleges and innumerable small colleges and high schools employed it as their basic offense last year. Faurot has authored a book on his brain-child entitled "Secrets of the Split T Formation." It will be published this Fall.

Only interruption in Faurot's tenure at Missouri was a three-year Navy hitch during the last war. Enlisting in 1943, he subsequently coached at the Navy Pre-Flight School in Iowa City, Ia., and at the Naval Air Station in Jacksonville, Fla. His 1943 Iowa Pre-Flight Seahawks lost only to Notre Dame, and were the nation's No. 2 team.

As an undergraduate at Missouri, Faurot lettered in football, basketball, and baseball. He was a fullback on Gwinn Henry's '23 and '24 teams--an explosive-hitting linebacker at 150 pounds--and also captained the basketball team. Graduated in 1925, he coached the Tiger freshmen one year, and also completed his requirements for an M.A. degree.

Faurot married the former Mary Davidson of Hannibal in 1927. They have three daughters--Jane 17, Aileen 14, and Julie 10.

Born at Mountain Grove, Mo., on June 23, 1902, Faurot is the twenty-third head coach in Missouri's football history.

#### DON FAUROT'S ALL-TIME RECORD

SCHOOL	YEAR	WIN	LOSE	TIE
Kirksville Teachers	1926	7	1	0
Kirksville Teachers	1927	8	1	0
Kirksville Teachers	1928	7	2	1
Kirksville Teachers	1929	5	3	1
Kirksville Teachers	1930	5	5	0
Kirksville Teachers	1931	6	1	1
Kirksville Teachers	1932	8	0	0
Kirksville Teachers	1933	9	0	0
Kirksville Teachers	1934	8	0	0
TOTALS		63	13	3
Missouri	1935	3	3	3
Missouri	1936	6	2	1
Missouri	1937	3	6	1
Missouri	1938	6	3	0
Missouri	1939	8	2	0
Missouri	1940	6	3	0
Missouri	1941	8	2	0
Missouri	1942	8	3	1
Missouri	1946	5	4	1
Missouri	1947	6	4	0
Missouri	1948	8	3	0
Missouri	1949	7	4	0
TOTALS		74	39	7
GRAND TOTALS		137	52	10

## THE COACHING STAFF



Front Row L-R--Clay Cooper, Don Faurot, and Huston Betty  
Back Row L-R--Bob Maddock, John Simmons, Chauncey Simpson, and Oliver J. DeVictor

**CHAUNCEY SIMPSON** (Kirksville Teachers 1928) -- Simpson came to Missouri with the Faurot regime in 1935. He previously had attended the University, lettering in football and track as a Tiger half-back and hurdler, before transferring to Kirksville. There, he played under Faurot in football, basketball, and track--and became backfield aide to Faurot after graduation. Handling the backs has been Simpson's No. 1 task at Mizzou, and he also served as head track coach until 1944.

During Faurot's 1943-45 Navy tour, "Chaunce" took over the head coaching job. His 1945 team copped a Big Six title and went on to the Cotton Bowl.

Chauncey is 48 years old, and one of Columbia's better golfers. He has twice won the Country Club's city title. Simpson is married and has two sons, George 16, and Charlie 9.

**JOHN "HI" SIMMONS** (Kirksville Teachers 1928) -- Another Kirksville all-sports athlete under Faurot, "Hi" joined the Mizzou staff in 1937. He coaches the freshman football squad and is chief scout for

the Tigers during the grid season. Except for Navy service (1943-45), Simmons has also been the baseball coach since his arrival at Missouri.

Simmons' first coaching job was at Milan high school, a position he held for one year. He spent the next six years at Mountain Grove high prior to joining the Tigers.

A shrewd and an experienced scout, "Hi" oftentimes does not get to see Mizzou play a single game over the season. . . But his reports on the opponent's personnel and tactics are an invaluable part of the Tigers' pre-game preparations.

Simmons held a Lieutenant senior grade commission when discharged from the Navy. He is married and has three sons--John, Jr., 8, Don, 3 1/2, and Robert, 9 months.

**HUSTON "HOOT" BETTY** (Missouri 1938) -- The 34-year-old line coach, a center on Faurot's first Mizzou team, returned to his alma mater in 1940. The next year, however, he was called to active duty with the Army and spent the ensuing five years in service. He was discharged in 1945, rejoining the coaching staff just before the Cotton Bowl trip.

A keen student of football, Betty generally handles the press-box phones during Tiger games. The former all-Big Six center--he made the '36 and '37 teams--is Mizzou's "other quarterback" on the field. He relays to the Tiger bench vital information on the opponents' or Mizzou's weaknesses, as seen from his vantage point.

A major with the Fourth Infantry division in World War II, Betty hit the Normandy beachhead 20 minutes after H-hour on D day. He fought with the Fourth division through the Battle of the Bulge, and was awarded the Silver and Bronze stars, and five battle stars.

Betty is married and has a son, Keith, age 8. He is a native of Kirkwood, Mo.

**CLAY COOPER** (Missouri 1940) -- B-team Coach Clay Cooper was a three-sports athlete at Missouri. He halfbacked on the '37, '38, and '39 M.U. teams, and earned a total of nine letters while competing in basketball and track as well. He has been on the staff since 1947.

Besides his B-team duties, Clay assists with the varsity backfield, and is Coach Sparky Stalcup's aide in basketball.

Cooper began his coaching career at Joplin high school in 1941 and 1942 but left to enter the Navy in 1942. As a lieutenant junior grade, he served aboard a P-T boat in the Pacific. After his discharge, he was



a graduate assistant at Missouri, and moved up to a full-time coaching job the next year.

The 32-year-old former Columbia athlete is married, and has three daughters--Georgiann 8, Cherre 6, and Julie 3 1/2.

**ROBERT "BOB" MADDOCK** (Notre Dame 1942) -- Most recent addition to the Tiger board of grid strategy is Bob Maddock, a former Notre Dame guard. He came to Missouri in 1949 to help with the line-coaching chores.

Black-haired, quick-to-grin Bob played for the Irish under Elmer Layden in 1939 and 1940, and under Frank Leahy in 1941. The '41 Irish team had the first unbeaten season since Rockne's regime.

Maddock played professional football with the Chicago Cardinals in 1942 and 1946. In the interim, he was a lieutenant junior grade with the Navy's amphibious forces for three years.

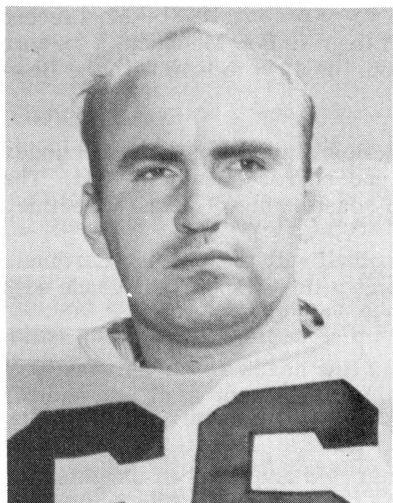
He entered coaching in 1947 as line coach at the University of San Francisco, and was on the Chicago (pro) Rockets' staff in a similar capacity in 1948.

Maddock, 30-years-old, is married and has two daughters--Patricia Ann 6 1/2, and Maryanne 2 1/2. His home is in Santa Ana, California.

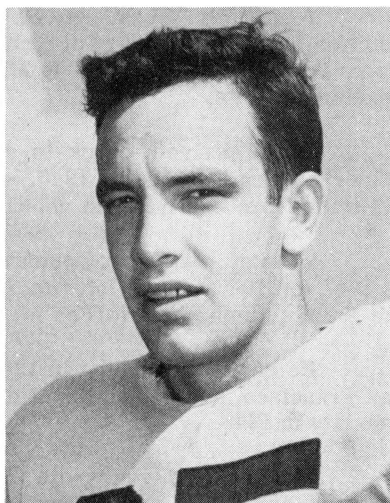
**OLIVER J. "OLLIE" DeVICTOR** (Penn State) -- Missouri's rotund trainer has been taping up Tiger athletes since 1935. As a trainer, Ollie has been at the trade since 1912, and in 1923 he put the wraps on Penn State's Rose Bowl team. Subsequently, Ollie was a trainer at Pittsburg and Washington University in St. Louis, before coming to Mizzou.

DeVictor is probably the "bowlingest" trainer in the business. He has made nine bowl trips as a trainer. He has been to the Rose Bowl three times, to the Gator Bowl twice, and to the Orange, Sugar, Cotton, and North-South Senior bowls once.

## ABOUT THE PLAYERS

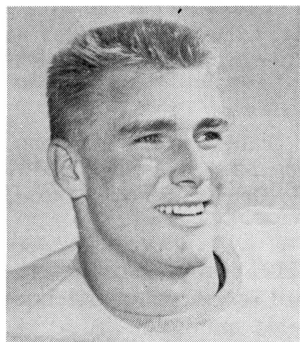


**BRONKO MARUSIC**  
(co-captain)



**BOB EBINGER**  
(co-captain)

### ENDS



**ACKERMANN, GENE** -- 6-5. .208  
. . .21. . .senior -- Big Ack caught 42  
passes for 621 yards last year, a single  
season record at Mizzou. . .had best day  
against Colorado, nabbing nine passes,  
another all-time individual high in Tiger  
annals. . .a rangy, big-mitted receiver--  
active and tough on defense. . .was second  
in the conference in pass-catches, handling  
the bulk of Phil Klein's pegs. . .is kick-off  
specialist. . .good student, has academic  
scholarship. . .lettered only one year as

a high-schooler at Soldan in St. Louis.

**BLANN, KEITH** -- 6-2. .184. .19. . .sophomore -- came fast  
in final spring drills. . .good prospect, but may find it difficult to break  
in this year. . .prepped at North Kansas City high.

BREWER, VIC -- 6-3 . . 191 . . 19 . . sophomore -- has range, maneuverability and speed to make a capable end. . .needs more experience. . .comes from Southwest high in Kansas City.

EBINGER, BOB -- 6-2 . . 194 . . 24 . . senior -- co-captain looks like No. 1 entry at left end. . .toughest on defense. . .injured knee one week before 1949 opener, and never regained 1948 edge. . .should have good year as a double-duty player. . .has lettered two seasons. . . ex-G.I. . .married. . .was an all-city choice at Southwest high in St. Louis in 1943.

HAMPEL, BILL -- 6-0 . . 172 . . 22 . . junior -- is solid blocker and tackler despite lack of heft. . .agile and isn't often tricked on defense where he's most apt to figure this year. . .played one year at Central College. . .was a high school guard at Cleveland in St. Louis.

JACKSON, GENE -- 6-0 . . 170 . . 19 . . sophomore -- packed on about ten pounds this summer which should help. . .reacts fast, and holds feet well. . .was prep high-jump champion in 1948. . .a native of Kirkwood.

MORSE, BILLY -- 6-1 . . 183 . . 23 . . junior -- didn't play high school ball, and may need more seasoning. . .ex-G.I. . .from Linn Creek, Mo.

PORTMANN, DALE -- 6-4 . . 202 . . 21 . . senior -- tall, rugged, and competent. . .used mostly on defense last season, and probably will understudy Ebinger. . .banged shoulder early in springtime work, and was out most of the way. . .won "M" in 1949. . .comes from Normandy high in St. Louis.

SIFFORD, DARRELL -- 6-<sup>0</sup> . . 191 . . 19 . . sophomore -- was reserve wingman as a year<sup>1</sup> at the outset. . .played **NOT RETURNING** ball at Jefferson City. will see action with B-team

SPOENEMAN, BOB -- 6-0 . . 191 . . 21 . . sophomore -- chunky lad from Beaumont high in St. Louis. . .good blocker with lots of fire . . .can earn varsity berth by good early performance.

UDELL, MAURICE -- 6-1 . . 183 . . 19 . . sophomore -- was regular freshman end. . .this smart, determined recruit from Excelsior Spring could break in this year. . .very capable musician.

WOOD, BRUCE -- 6-3 . . 184 . . 21 . . junior -- skilful, sturdy defensive hand. . .developed fast last year. . .his father formerly coached at Lawrence high in Kansas. . .played prep ball at Hannibal.

## TACKLES

ALBIN, DAVE -- 6-0. . .210. . .19. . .sophomore -- likes to play. . .must improve speed. . .still short on experience. . .hails from Ferguson.

BORGSCHULTE, DON -- 6-1. . .208. . .19. . .sophomore -- agile for a big man, and tough when aroused. . .plays offense and defense. . . earned grid spurs at McBride high in St. Louis.

BOYD, JULIAN -- 6-0. . .215. . .21. . .junior -- was B-team starter in 1949. . .tendency to pack on extra weight has been biggest handicap. . .an all-Southeast lineman at Caruthersville high.

CORNELIUS, BILL -- 6-1. . .197. . .19. . .sophomore -- definitely a comer. . .did fine job in spring game as Woodson's sub. . . was regular frosh tackle. . .prepped at Lee's Summit.

EKERN, GEORGE -- 5-10. . .198. . .19. . .sophomore -- could use more experience as B-teamer. . .brother of Bert and Bill Ekern-- former Tiger lettermen. . .played high school ball at Mexico, Mo.

FUCHS, PAUL -- 6-2. . .225. . .19. . .sophomore -- looks ponderous, but is exceptionally fast and mobile for a big fellow. . .has the equipment to make a capable T-formation tackle. . .no relation to Bill. . .prepped at Roosevelt high in St. Louis.

GELLMAN, HERB -- 6-2. . .198. . .19. . .sophomore -- another newcomer who could click. . .willing, eager to learn, and aggressive. . .frosh baseball catcher. . .a Maplewood product.

KELLER, DON -- 6-1. . .213. . .23. . .senior -- starting right tackle on defensive platoon in 1949. . .played best game against Maryland. . .roly-polyish in appearance, but a rugged lineman. . .has wrestled in A.A.U. meets, and as a soldier in the ETO. . .21 months in the service. . .twice-lettered at Mizzou. . .comes from Webster Groves.

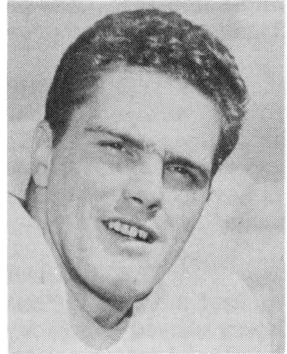
MILLICAN, DAVE -- 6-3. . .201. . .21. . .senior -- moved up steadily late last year, and showed continued progress this spring. . . quiet, colorless workman. . .played three years at Westport high in Kansas City, and was an all-city selection as a senior.

RUTTER, DON -- 6-6. . .190. . .19. . .sophomore -- tallest squadman was switched from end last spring. . .wants to play, and will keep improving. . .president of the Missouri 4-H club. . .is regular cattle exhibitor at all the fairs. . .his brother Jim lettered at center for Tigers in 1948-49.

SAVAGE, PAUL — 6-2. . .215. . .24. . .senior -- muscular two-year letterman oozes strength, but is heavy-legged, could use more speed. . .saw two years' duty with the Marines. . .attended McKinley high in St. Louis, earning two grid letters.

SCHAEFFER, ED -- 6-2. . .193. . .19. . .sophomore — was chosen on All-American high school squad. . .has good potential ability and should develop. . .a standout lineman at Beaumont high in St. Louis.

WOODSON, JOE -- 6-0. . .188. . .22. . .junior -- lightest Missouri tackle in years. . .logged more time in 1949 than any other sophomore. . .named to All-Big Seven Sophomore team. . .very active and fast--and may double as an offensive guard this year. . .good downfield blocker. . . often gets the tackle on plays away from him. . .durable and tough. . .ex-G.I. with 18 months in the Army. . .learned his grid tactics at Wellston high.



### GUARDS

ARD, SAM -- 6-1. . .202. . .19. . .sophomore -- likes to mix it up in fundamental drills. . .probably not ready yet, but should help eventually. . .won football spurs at Lee's Summit.

CASTLE, BOB -- 5-10. . .197. . .19. . .sophomore -- coaches like this boy's attitude--and his production. . .a perfectionist, he carries out his assignments thoroughly on every play. . .was starting yearling tackle. . .expected to show early, and play plenty. . .comes from Central high in St. Joseph.

GRIFFITH, DAVE -- 6-1. . .180. . .19. . .sophomore — hard-lucker, missed spring work when he slipped on wet turf and injured a knee. . .showed promise with the freshmen. . .graduate of Lillis high in Kansas City.

HIXSON, BOB -- 5-11. . .180. . .21. . .senior -- has shown flashes of good form, but never consistent enough to win a letter. . . lots of fire, and willing to mix it up. . .could come this year. . .attended Roosevelt high in St. Louis.

KADLEC, JOHN — 5-10. . .204. . .21. . .senior — voted squad's most valuable lineman last year by M.U. coaches. . .a rugged, smashing tackler with a pair of logs for under-pins. . .chosen on Stanley

Woodward's pre-season offensive all-America platoon, and should achieve national recognition if he duplicates last year's performance . . . used almost entirely on defense in '49, but will be a full-timer this season. . . comes from South Side Catholic high in St. Louis.

**LORDO, JACK** -- 5-11. . . 200. . . 20. . . sophomore -- one of top prospects among the rookies. . . has best day last year against K.U. frosh. . . has experience edge (two spring sessions) after enrolling at mid-semester. . . has physical stuff and talent to play lots of guard for Tigers. . . won two prep letters at Beaumont high in St. Louis.

**MARUSIC, BRONKO** -- 6-0. . . 209. . . 25. . . senior -- "The Bronc," newly-married, also has responsibilities on the field this year as a Tiger co-captain. . . a good, stable front-liner, he reacts fast-- and can blast open that hole for his ball-carrying mates. . . Braznell ran over him frequently in '49. . . may be headed for his greatest campaign. . . an Army vet.

**McKEE, RICHARD** -- 5-11. . . 188. . . 21. . . senior -- red-topped Richard answers to "Rusty". . . played B-team tackle in 1949 when a leg injury shoved him back early in the year. . . aggressive, likes to tackle . . . played junior college ball at Hutchinson, Kan., and the 1948 Hutch team won 10, lost 1, and tied 1. . . will be a guard convert this year. . . home-town is Nickerson, Kan.

**MEAGHER, DON** -- 6-0. . . 200. . . 22. . . junior -- has been dogged by injuries. . . inactive all last season with a knee wound. . . showed well on defense this spring. . . served two years with Marines . . . graduate of Beaumont high in St. Louis.

**SODEMAN, CHARLES** -- 5-10. . . 192. . . 19. . . sophomore -- probably destined for more seasoning with B-team squad. . . hails from Excelsior Springs.

**MACKRIS, GUS** -- 6-1. . . 196. . . 20. . . junior -- varsity timbre if he maintains spring pace. . . hampered by a wrenched knee through part of sophomore year, but was B-team fixture. . . played prep football at Soldan high in St. Louis.

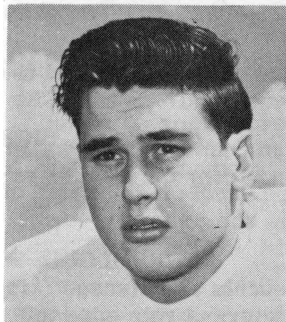
## CENTERS

**BAECHLE, HERMAN** -- 6-1. . . 192. . . 21. . . senior -- overshadowed by good men up ahead for two years, "Beck" should be much in evidence this season. . . B-team center in 1948, lettered at guard as second and third-stringer last year. . . equally competent as ball-snapper or linebacker. . . tanned, lithe, and strong. . . his hometown--Ste. Genevieve--is oldest town in Missouri.

BAYERS, BOB -- 5-11. . .183. . .21. . .junior -- good linebacking prospect, with no previous varsity experience. . .forestry major . . .prepped at Cleveland high in St. Louis.

DUNTON, BILL -- 6-1. . .181. . .19. . .junior -- played guard for last year's B team. . .is aggressive, spirited on the field--and should give a green linebacking corps needed depth. . .Ritenour high in St. Louis is his alma mater.

FUCHS, BILL -- 6-0. . .190. . .19 junior -- steps into brother Bob's hangout, and coaches freely predict there'll be no efficiency lag. . .slated for No. 1 call, the younger Fuchs is a driving tackler--always in the ballgame. . .still carries knot on forehead, souvenir of a freshman game . . .third son in a football family. . .oldest brother, George, quarterbacked for Wisconsin in 1946. . .a pre-med student. . .prepped at Western Military Academy in S. W. Illinois.



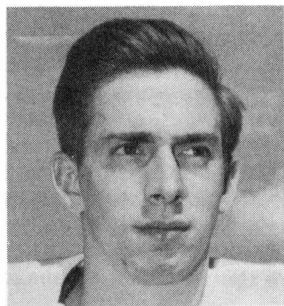
KINSON, ROGER -- 6-2. . .201. . .21. . .senior -- biggest of available centers, but of doubtful utility because of an elbow fracture sustained in pre-Gator Bowl practice. . .has ability, physical readiness questionable. . .comes from Harlem high in Rockford, Ill.

### QUARTERBACKS

FESSLER, BILL -- 6-2. . .172. . .19. . .sophomore -- rangiest of q.b. candidates. . .showed smart defense in spring game. . .a fine future-book bet for a varsity quarterbacking berth. . .good track prospect--shot-putter, hurdler, javelinist. . .all-around athlete at Paseo high in Kansas City.

HAILEY, BOB -- 5-10. . .155. . .21. . .senior -- one of the squad's surest, slickest tacklers, and a heads-up field boss. . .good pressure player. . .plays hard, practices hard. . .subject to national guard call. . .won 13 letters as four-sports athlete at Mt. Vernon high.

HENLEY, BOB -- 5-11. . .162. . .22. . .senior -- showed plenty of class, and greatly improved consistency in spring drills. . .has explosive speed as a ball-packer, throws an accurate lob pass, and is a capable punter. . .imaginative and ingenious in the signal-calling job . . .shifted to left half in 1949, Henley cracked an ankle bone midway in the campaign, was shelved for the rest of the schedule and failed to letter. . .formerly played for San Bernardino (Calif.) junior college . . .married.



**KLEIN, PHIL** -- 5-10. .160. .20  
. . .senior -- fresh up from the B squad  
in 1949, Phil gave Mizzou its most potent  
aerial game since the days of Paul Christ-  
man. . .in fact, Klein's pass completion  
percentage--just a shade under .500--  
topped anything ever recorded by Christ-  
man. . .he connected 55 times in 112 throws  
for 808 yards--third best in the conference  
. . .completed 10 out of 14 against Ohio  
State, and was named on the Rose Bowl  
champs' all-opponent team. . .a heady,

cool play-picker and fine ball-handler. . .advanced ROTC student. . .  
was an all-Kansas City back at Southwest high in 1946.

**ORTMANN, DICK** -- 5-11. .182. .20. .sophomore -- played  
freshman ball at Indiana. . .offensively, he could use more Split T ex-  
perience, but has lots of defensive savvy. . .has ability, and should fit  
in somewhere. . .three-letter athlete at Cleveland high.

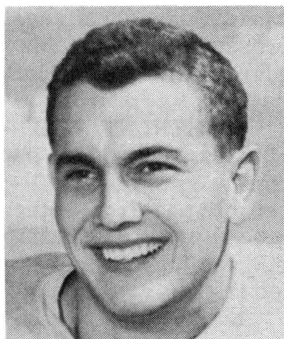
**TRUEBLOOD, WALTER** -- 5-11. .161. .19. .sophomore --  
excels on defense. . .is another good bet for future varsity play, but  
veterans rate edge this season. . .played high school ball at Westport  
in Kansas City.

### LEFT HALFBACKS

**CARMICHAEL, GEORGE** -- 6-0. .163. .20. .sophomore --  
has good speed, and open-field know-how. . .looked like one of better  
recruit backs this spring. . .tackles well. . .nick-named "Hoagy". . .  
home is in Clayton.

**CARRAS, NICK** -- 5-11. .184. .23. .senior -- veteran Tiger  
back is Army Air Corps active reservist and could be called anytime  
. . .used mostly on defense last year, Nick is a slashing ball-carrier  
with lots of drive. . .was floored by injuries both in 1948 and 1949. . .  
fine secondary defender. . .if available, will be playing his fourth sea-  
son. . .twice an all-city back at Westport high in Kansas City.

**GLORIOSO, JOHN** -- 5-11. .182  
. . .23. .senior -- Missouri's toughest  
clutch player last season with an average  
of 6.3 yards for 144 run-and-pass plays  
. . .led MU scorers with 77 points, for  
ninth-best figure in the nation. . .booted  
29 of 38 conversion kicks. . .besides his  
offensive total of 920 yards, he accounted  
for 212 more on 11 pass receptions. . .  
tallied MU's opening touchdown in five  
consecutive games. . .had greatest day  
against Kansas, totaling 282 net yards





from scrimmage on 22 rush-and-pass plays for an average gain of almost 13 yards a try. . . was second team all-conference halfback. . . ex-G.I. with 18 months of Navy duty. . . twice all-city selection at Northeast high in Kansas City.

WILKENING, BILL -- 5-11. . .160. . .22. . .sophomore -- played freshman ball at Iowa in 1948. . .lots of ability. . .a competent pass-catcher, and a smart, shifty runner. . .alert and active on defense. . .made good spring impression, and should push the veterans up ahead . . .from Jackson, Mo.

WREN, JUNIOR -- 5-10. . .170. . .20. . .junior -- able triple-threater, handled Mizzou's punter in latter games last year. . .brother of Bob Wren, letterman end in 1948. . .is fast and aggressive. . .base-ball pitcher. . .prepped at Central high in Kansas City.

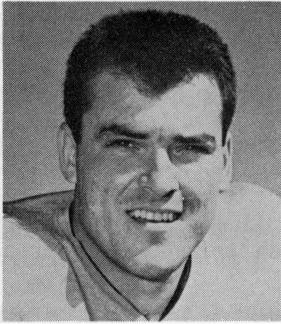
### RIGHT HALFBACKS

CARTER, HAROLD -- 5-10. . .161. . .20. . .junior -- a speedster with definite breakaway talent. . .so-so passer. . .played often over latter half of schedule, and could be a real surprise-package this year . . .track letterman and an A-1 scholar. . .was sought-after athlete at Lee's Summit where he won 11 letters.

GHNOULY, MIKE -- 5-10. . .165. . .22. . .senior -- this little scrapper was lost in the two-platoon shuffle last season, playing virtually all the way as a defensive safety. . .had brilliant sophomore year in '48, averaging 5 1/2 yards per carry. . .is Loyd Brinkman-type player--a shifty, change-of-pace ball-lugger, and a superb tackler and pass defender. . .will see more offensive action this year. . .nephew of Joe Ghnouly--a good lightweight boxer in the late thirties. . .won two grid letters at McKinley high in St. Louis.

HEIMERDINGER, CHARLES . . .19. . .sophomore  
-- smallish but aggressive . . . but probably in line for  
B-team development. . .  
**NOT RETURNING** . . .duct.

MICKENS, HAROLD -- 6-1. . .178. . .21. . .junior -- earned his sophomore "M" in a strictly defensive capacity. . .good pass defense judgment. . .polished his offensive game last spring. . .should be in there often. . .was three-year mainstay at Smith-Cotton high in Sedalia.



STEPHENS, ED -- 5-11. . .182. . .  
23. . .senior -- another dependable "round-  
the-clock" player, and a great team player  
. . .worked almost wholly as a defensive  
half last year, and did a standout job a-  
gainst S.M.U. . . .a jarring tackler who  
meets plays well. . .as a live-legged soph-  
omore he averaged 7.1 yards on each try  
. . .Ed's distinction is unique--he has earn-  
ed three Tiger football letters, and has  
made three "bowl" trips. . .played on the  
1945 Cotton Bowl team, and the 1948 and  
1949 Gator squads. . .ex-G.I. . .his grid career began at Carthage  
high. . .now lives in Joplin.

STUDER, DENNY -- 6-0. . .179. . .25. . .senior -- a lefty of  
varsity stature who has experienced three injury-jinxed campaigns. . .  
in trim, a classy, hard-running back--who can put on the brakes and  
whip the southpaw pass a la Dick Braznell. . .Navy vet. . .played his  
prep ball at Holy Family Parochial high in Mason City, Ia.

TAYLOR, WAYNE -- 6-2. . .198. . .20. . .Hannibal -- heaviest  
of the halfbacks. . .another left-hander with a tremendous arm. . .like  
Studer, his history at Mizzou is one of frequent injuries. . .good hand-  
off man who also generates lots of power on wide plays. . .a three-  
letter winner at Hannibal high.

## FULLBACKS

BECKER, BOB -- 6-2. . .194. . .19. . .sophomore -- best on  
offense. . .made great strides in final two weeks of spring practice  
. . .promising, but needs more seasoning. . .is shot and discus special-  
ist in track. . .holds state high school discus record. . .from Ferguson,  
Missouri.

BURKHART, BILL -- 6-0. . .182. . .19. . .sophomore -- a  
swifty who produced fast last spring in a new position. . .was yearling  
halfback. . .a quick starter with plenty of speed and spirit. . .a great  
competitor, he should give his more seasoned mates lots of argument  
. . .all-around athlete at Shawnee-Mission high in Kansas City, Kan.

DENEKE, BOB -- 5-11. . .196. . .21. . .senior -- a veteran of  
two B-team campaigns, Deneke looks ready for bigger things off his  
top performance in the final intra-squad spring game. . .reeled off  
several, sizeable gains, and blocked effectively. . .as a high schooler,  
his vicious tackling once accounted for two broken legs in a single  
game. . .does some place-kicking. . .hails from Sikeston, Mo.

**HOUSTON, BILL** -- 6-0 . . 211 . . 21 . . senior -- this well-knit bruiser has first call on No. 1 job. . . a two-year letterman with terrific leg-drive. . . averaged 5.2 yards as a sophomore, and 4.7 last season. . . improved blocking could make him one of the league's best . . . missed spring drills because of a knee hurt. . . his brother Butch was Coach Faurot's first captain in 1935. . . lettered three years at Wellston high.

**MAAS, CARROLL** -- 5-10 . . 200 . . 20 . . sophomore -- backed line for freshman squad--and defense is strong suit. . . a knee injury also kept him on cripple roster last spring. . . if leg holds up, Maas could be an asset to the line-backing staff. . . was Class "A" shot-put champ for two years at Kirkwood high.

**FITZGERALD, TOM** -- 6-0 . . 203 . . 21 . . junior -- husky transfer from Coffeyville (Kan.) junior college. . . lugs ball well and looks capable. . . won high school letters in basketball and track, and had several seasons of Ban Johnson baseball.

### *RETURNING LETTERMEN*

**ENDS** . . . . . Gene Ackermann, Bob Ebinger, Dale Portmann  
**TACKLES** . . . Don Keller, Dave Millican, Paul Savage, Joe Woodson  
**GUARDS** . . . . . John Kadlec, Bronko Marusic  
**CENTERS** . . . . . Herman Baechle, Bill Fuchs  
**QUARTERBACKS** . . . . . Phil Klein  
**HALFBACKS** . . . . . Nick Carras, John Glorioso, Harold Carter,  
 Mike Ghnoully, Harold Mickens, Ed Stephens  
**FULLBACKS** . . . . . Bill Houston

### *LETTERMEN LOST*

**ENDS** . . . Dick Armstrong, Ken Bounds, Jim Dusenbury, Fred Hulse  
**TACKLES** . . . . . Freeman Bullock, Dick Scholfield  
**GUARDS** . . . . . Ellis Cox, Gene Pepper  
**CENTERS** . . . . . Giles Blair, Bob Fuchs, Jim Rutter  
**QUARTERBACKS** . . . . . Jack Frier, Martin Sauer  
**HALFBACKS** . . . . . Dick Braznell  
**FULLBACKS** . . . . . Winford Carter, Dave Ashley

# 1950 Football Roster

<u>NAME</u>	<u>HT.</u>	<u>WT.</u>	<u>POS.</u>	<u>AGE</u>	<u>CLASS</u>	<u>HOME TOWN (H.S.)</u>
* Ackermann, Gene	6-5	208	E	21	Sen.	St. Louis (Soldan)
Albin, Dave	6-0	210	T	19	Soph.	Ferguson
Ard, Sam	6-1	202	G	19	Soph.	Lee's Summit
* Baechle, Herman	6-1	192	G	21	Sen.	St. Genevieve
Bayers, Bob	5-11	183	C	21	Jun.	St. Louis (Cleveland)
Becker, Bob	6-2	194	FB	19	Soph.	Ferguson
Blann, Keith	6-2	184	E	19	Soph.	North Kansas City
Borgschulte, Don	6-1	208	T	19	Soph.	St. Louis (McBride)
Boyd, Julian	6-0	215	T	21	Jun.	Caruthersville
Burkhart, Bill	6-0	182	FB	19	Soph.	Kansas City (Shaw. Mis.)
Brewer, Vic	6-3	191	E	19	Soph.	Kansas City (Southwest)
Carmichael, George	6-0	163	HB	20	Soph.	Clayton
***Carras, Nick	5-11	184	HB	23	Sen.	Kansas City (Westport)
* Carter, Harold	5-10	161	HB	20	Jun.	Lee's Summit
Castle, Bob	5-10	197	G	19	Soph.	St. Joseph
Cornelius, Bill	6-1	197	T	19	Soph.	Lee's Summit
Deneke, Bob	5-11	196	FB	21	Sen.	Sikeston
Dunton, Bill	6-1	181	C	19	Jun.	Overland
**Efinger, Bob (co-c)	6-2	194	E	24	Sen.	St. Louis (Southwest)
Ekern, George	5-10	198	T	19	Soph.	Mexico
Fessler, Bill	6-2	172	QB	18	Soph.	Kansas City (Paseo)
Fitzgerald, Tom	6-0	203	FB	21	Jun.	Coffeyville, Kan.
* Fuchs, Bill	1-0	190	C	19	Jun.	St. Louis (West. Mil.)
Fuchs, Paul	6-2	225	T	19	Soph.	St. Louis (Roosevelt)
Gellman, Herb	6-2	198	T	19	Soph.	Maplewood
**Ghnouly, Mike	5-10	165	HB	22	Sen.	St. Louis (McKinley)
**Glorioso, John	5-11	182	HB	23	Sen.	Kansas City (Northeast)
Griffith, Dave	6-1	180	G	19	Soph.	Kansas City (Lillis)
Hailey, Bob	5-10	155	QB	21	Sen.	Mt. Vernon
Hampel, Bill	6-0	172	E	22	Jun.	St. Louis (Cleveland)
Heimerdinger, Charles	5-9	156	HB	19	Soph.	Chicago
Henley, Bob	5-11	162	QB	22	Sen.	Gashland
Hixson, Bob	5-11	180	G	21	Sen.	St. Louis (Roosevelt)

**Houston, Bill	6-0	211	FB	21	Sen.	Wellston
Jackson, Gene	6-0	170	E	19	Soph.	Kirkwood
**Kadlec, John	5-10	204	G	21	Sen.	St. Louis (S-S-Cath.)
**Keller, Don	6-1	213	T	23	Sen.	Webster Groves
Kinson, Roger	6-2	201	C	21	Sen.	Rockford, Ill.
*Klein, Phil	5-10	160	QB	20	Sen.	Kansas City (Southwest)
Lordo, Jack	5-11	200	G	20	Soph.	St. Louis (Beaumont)
Maas, Carroll	5-10	200	FB	20	Soph.	Kirkwood
Mackris, Gus	6-1	196	G	20	Jun.	St. Louis (Soldan)
***Marusic, Bronko (co-c)	6-0	209	G	25	Sen.	St. Louis (Beaumont)
McKee, Richard	5-11	188	E	21	Sen.	Nickerson, Kan.
McVey, Berton	5-7	155	HB	19	Soph.	Princeton
Meagher, Don	6-0	200	G	22	Jun.	St. Louis (Beaumont)
*Mickens, Harold	6-1	178	HB	21	Jun.	Sedalia
*Millican, Dave	6-3	201	T	21	Sen.	Kansas City (Westport)
Minetree, Tom	6-1	177	HB	19	Soph.	Poplar Bluff
Morse, Bill	6-1	183	E	23	Jun.	Linn Creek
Ortmann, Dick	5-11	182	QB	20	Soph.	St. Louis (Cleveland)
*Portmann, Dale	6-4	202	E	21	Sen.	St. Louis (Normandy)
Rutter, Don	6-6	190	T	19	Soph.	Shelbina
**Savage, Paul	6-2	215	T	24	Sen.	St. Louis (McKinley)
Schaeffer, Ed	6-2	193	T	19	Soph.	St. Louis (Beaumont)
Sodeman, Charles	5-10	192	G	19	Soph.	Excelsior Springs
Spoeneman, Bob	6-0	191	E	21	Soph.	St. Louis (Beaumont)
***Stephens, Ed	5-11	182	HB	23	Sen.	Joplin
Studer, Denny	6-0	179	HB	25	Sen.	Mason City, Ia.
Taylor, Wayne	6-2	198	HB	20	Jun.	Hannibal
Trueblood, Walter	5-11	161	QB	19	Soph.	Kansas City (Westport)
Udell, Maurice	6-1	183	E	19	Soph.	Excelsior Springs
Wilkening, Bill	5-11	160	HB	22	Soph.	Jackson
Wood, Bruce	6-3	184	E	21	Jun.	Hannibal
*Woodson, Joe	6-0	188	T	22	Jun.	Wellston
Wren, Junior	6-0	170	HB	20	Jun.	Kansas City (Central)

\* Lettered one year

\*\* Lettered two years

\*\*\* Lettered three years

## MIZZOU FOOTBALL -- 1950

Willy Shakespeare said it, "The play's the thing"--and Coach Don Faurot would amend that to read, "Defensive play's the thing," as his Missouri Tigers get set for the 1950 football season--Faurot's 13th as football pilot at Mizzou.

Shakespeare didn't have football in mind when he said it, but Faurot--who has football in mind anytime, and who, yielding not a thing to Shakespeare (well, not much) has authored a book on his Split T formation--has a point. Team defense--the same bugaboo that stamped the 1949 Missourians as the league's most charitable team--is again the No. 1 concern.

"We sure had trouble getting the side out," is Faurot's mellowed recollection of the 1949 season, and the record bears him out. Last year, his Tigers permitted more enemy points than any club in the school's history. They scored 264 points, a fair take, but had 225 chalked against them in compiling a 7-4 mark.

Time to take up the slack, for sure, but Faurot isn't certain that this year's team will show more resistance.

"We've lost our first three linebackers in center Bob Fuchs and fullbacks Win Carter and Dave Ashley," he says, "and they handled all our backerup duties for two years. That leaves center Bill Fuchs as the only man with any varsity linebacking experience."

At a glance, and barring any military draft seizures, the Tigers will have 19 lettermen back this year, and 15 of these holdovers are seniors. The only late-summer casualty on the squad was end Don Hanners who was called into service with a National Guard unit. Although Hanners was not a letterman, he had virtually cinched the second-string job at right end, off his showing last spring.

But the roster of "availables" still includes handy fellows like quarterback Phil Klein, halfback Johnny Glorioso, and end Gene Ackermann, who can make the split T work. The Tigers can staff eleven positions with veterans, and are deep in halfbacks and tackles; elsewhere, seasoned manpower is lean, especially at center, both ends, and fullback.

Offensively, Faurot could be accused of hoarding halfbacks. He has six veterans back for the two positions. His quarterback outlook is brighter too, with Bob Henley--best of the springtime backs--giving the under-center post double insurance. Senior Bob Hailey is also long on signal-calling experience.

It may be difficult to fill all-conference Dick Braznell's run-and-pass cleats at right half--especially a southpaw passer for the dual threat on wide plays. Here though, able replacements are at fingertip. Could be Mike Ghnouly or Ed Stephens--both of whom were burdened with defensive chores last year, after good sophomore seasons. Could be Harold Carter, the junior trackman who, like Ghnouly and Stephens, is fitted for speed. Harold Mickens is a fourth letterman who can't be overlooked here. Lefthanders there are too,--men like Wayne Taylor and Denny Studer, squaddmen last year.

At fullback, the blocking, hard-running Carter is gone, with Big Bill Houston tabbed for one of the Split T's most exacting jobs. A two-year letterman, Houston's 211 pounds should create some offensive sparks. Bob Deneke, an ex B-teamer, impressed last spring and will challenge. Sophomores Bill Burkhart--swiftest of the lot--Carroll Maas and Bob Becker are very much in the picture.

Rounding out the backfield, Glorioso's partners at left half will be Nick Carras--entering his fourth season--and Junior Wren, versatile squadman last year.

As of the opening workouts, the top lettered candidates in the line will include: Ends--Bob Ebinger, Ackermann, and Dale Portmann; tackles--Joe Woodson, Don Keller, Dave Millican, and Paul Savage; guards--John Kadlec and Bronko Marusic; and centers Bill Fuchs and Herman Baechle.

Off last year's team, end Bill Hampel should fortify the wingmen's ranks, while tackle Julian Boyd and center Bill Dunton are likely to figure.

Sophomoric climbs to varsity ranks won't be numerous, but guards Jack Lordo and Bob Castle rate highly in the Tiger coaches' plans. Bill Cornelius, Herb Gellman, or Paul Fuchs could help at the tackles, and ditto for Maurice Udell and Bob Spoeneman at the ends. Halfbacks Bill Wilkening, George Carmichael, and Tom Minetree are talented enough--but the competition up ahead is heavy.

# UNIVERSITY OF MISSOURI

## LOCATION

The University of Missouri is located in Columbia which is near the geographic center of the state and 31 miles north of Jefferson City, the state capitol.

## THE PRESIDENT

Dr. Frederick A. Middlebush, president of the University of Missouri, is widely known as an educator, administrator, and authority on political science and law. He joined the faculty in 1922, and became president in 1935. During his tenure here, Dr. Middlebush has seen the enrollment grow from less than 3,500 to more than 15,000 students--and new campus buildings have kept apace of that expansion.

## WHEN FOUNDED

In 1839, the Geyer Act created the University of Missouri. Construction of University buildings began with the laying of the cornerstone for Academic Hall on July 4, 1840, and formal instruction in the University dates from April 14, 1841. The University of Missouri is the oldest state university west of the Mississippi.

## EARLY HISTORY

After fighting a constant struggle for survival, the University suffered utter disruption during the Civil War. During this period, the Federal Militia seized Academic Hall for their headquarters, and it wasn't until 1865 that the University was officially re-opened. Women students were cautiously introduced into the student body in 1868 under rigid rules, and were officially admitted to the student body in 1870.

## NUMBER OF SCHOOLS OR BRANCHES

The University of Missouri numbers ten schools and colleges which are governed by a Board of Curators, a nine-member group appointed by the Governor and approved by the Legislature. The University includes the College of Arts and Science, the School of Business Administration, the School of Engineering, the Graduate School, the College of Education, the School of Law, the School of Medicine, the School of Journalism, the College of Agriculture, and the School of Mines and Metallurgy at Rolla, Mo. The School of Journalism, founded in 1908, was at that time the first of its kind in the world. Its graduates are said to be Missouri's second greatest export.

## NUMBER OF STUDENTS IN ATTENDANCE

Enrollment figures for the Fall semester of 1950 should total 9,000 students. The peak enrollment of 14,071 students was reached during the Fall semester of 1947. The first commencement at the University of Missouri was formalized on November 28, 1843, with two graduates. Since that time more than 125,000 students have enrolled, and more than 40,000 have received degrees.



## OFFICIALS FOR MIZZOU'S 1950 GAMES

<u>Game</u>	<u>Referee</u>	<u>Umpire</u>	<u>Linesman</u>	<u>Judge</u>
Clemson	Bat Shunatona (Oklahoma)	C. A. Powell (Furman)	Hugh Leonard (Phillips)	James Grey (Davidson)
S. M. U.	Clifford Shaw (Arkansas)	Grady Skillern (Oklahoma)	F. F. Leissner (Texas)	Mike Oberhelman (Kansas State)
Kansas State	Cliff Ogden (Wichita)	M. G. Volz (Nebraska)	Jap Haskell (Oklahoma)	Jack North (Highland Park)
Iowa State	Bat Shunatona (Oklahoma)	Bud Knox (Des Moines)	Hugh Leonard (Phillips)	Dick Pendleton (Oklahoma)
Oklahoma A & M	A. L. Haskins (Oklahoma)	M. G. Volz (Nebraska)	Jap Haskell (Oklahoma)	Jack North (Highland Park)
Nebraska	A. L. Haskins (Oklahoma)	Cecil Muellerleile (St. Louis U.)	Jap Haskell (Oklahoma)	Dick Pendleton (Oklahoma)
Colorado	Louis House (Wm. Jewell)	Grady Skillern (Oklahoma)	George Bourrette (Mo. Westeyan)	A. L. Haskins (Oklahoma)
Oklahoma	Louis House (Wm. Jewell)	Bud Knox (Des Moines)	George Bourrette (Mo. Westeyan)	Mike Oberhelman (Kansas State)
Kansas	Louis House (Wm. Jewell)	M. G. Volz (Nebraska)	Carl Kopelk (College of Emporia)	Dick Pendleton (Oklahoma)
Miami	Howard Ector (Georgia Tech)	Grady Skillern (Oklahoma)	Charles Wood (Georgia Tech)	Louis House (Wm. Jewell)

## FACTS, FIGURES ON 1950 OPPONENTS

**CLEMSON** -- LOCATION, Clemson, S. C.; ENROLLMENT, 3,200; FOUNDED, 1889; HEAD COACH, Frank Howard; STADIUM, Memorial; CAPACITY, 20,500; OFFENSE, Modified Single Wing; NICKNAME, Tigers or Country Gentlemen; COLORS, Purple and Orange; CONFERENCE, Southern; SERIES RECORD, Clemson won 1, Missouri won 0; 1949 RECORD, 4-4-2; 1949 SCORES, Won from--Presbyterian 69-7, North Carolina State 7-6, Duquesne 33-20, and Furman 28-21; Lost to--Rice 7-33, South Carolina 13-27, Wake Forest 21-35, and Boston College 27-40; Tied--Mississippi State 7-7 and Auburn 20-20.

**SOUTHERN METHODIST** -- LOCATION, Dallas, Tex.; ENROLLMENT, 11,849; FOUNDED, 1911; HEAD COACH, H. N. Russell; STADIUM, Cotton Bowl; CAPACITY, 75,347; OFFENSE, Single, Double, and Triple Wing; NICKNAME, Mustangs or Ponies; COLORS, Cardinal Red and Royal Blue; CONFERENCE, Southwest; SERIES RECORD, S.M.U. won 4, Missouri won 2, Tied 1; 1949 RECORD, 5-4-1; 1949 SCORES, Won from--Wake Forest 13-7, Missouri 28-27, Kentucky 20-7, Texas 7-6, and Arkansas 34-6; Lost to--Rice 27-41, Baylor 26-35; Texas Christian 13-21, and Notre Dame 20-27; Tied--Texas A & M 27-27.

**KANSAS STATE** -- LOCATION, Manhattan, Kan.; ENROLLMENT, 6,500; FOUNDED, 1863; HEAD COACH, Ralph Graham; STADIUM, Memorial; CAPACITY, 15,000; OFFENSE, T-formation; NICKNAME, Wildcats; COLORS, Royal Purple and White; CONFERENCE, Big Seven; SERIES RECORD, Kansas State won 11, Missouri won 20, Tied 4; 1949 RECORD, 2-8-0; 1949 SCORES, Won from--Ft. Hays State 55-0 and Colorado 27-13; Lost to--Nebraska 6-13, Iowa State 21-25, Memphis State 14-21, Kansas 0-38, Oklahoma 0-39, Oklahoma A & M 14-26, Tulsa 27-48, and Missouri 27-34.

**IOWA STATE** -- LOCATION, Ames, Ia.; ENROLLMENT, 9,000; FOUNDED, 1858; HEAD COACH, Emmett R. "Abe" Stuber; STADIUM, Clyde Williams Field; CAPACITY, 20,000; OFFENSE, T-V formation; NICKNAME, Cyclones; COLORS, Cardinal and Gold; CONFERENCE, Big Seven; SERIES RECORD, Iowa State won 13, Missouri won 24, Tied 5; 1949 RECORD, 5-3-1; 1949 SCORES, Won from--Dubuque 64-0, Kansas 19-6, Colorado 13-6, Kansas State 25-21, and Drake 21-8; Lost to--Missouri 0-32, Oklahoma 7-34, and Nebraska 0-7; Tied--Illinois 20-20.

**OKLAHOMA A & M** -- LOCATION, Stillwater, Okla.; ENROLLMENT, 10,460; FOUNDED, 1890; HEAD COACH, Jennings B. Whitworth; STADIUM, Lewis Field; CAPACITY, 40,000; OFFENSE, T-formation; NICKNAME, Aggies or Cowboys; COLORS, Orange and Black; CONFERENCE, Missouri Valley; SERIES RECORD, A & M won 0, Missouri won 3; 1949 RECORD, 4-4-2; 1949 SCORES, Won from--Denver 48-2, Drake 28-0, Kansas State 26-14, and Wichita 47-20; Lost to--Missouri 7-21, Kansas 14-55, Detroit 7-13, and Oklahoma 0-41; Tied--Texas Christian 33-33 and Tulsa 13-13.

**NEBRASKA** -- LOCATION, Lincoln, Neb.; ENROLLMENT, 10,500; FOUNDED, 1869; HEAD COACH, William "Biff" Glassford; STADIUM, Memorial; CAPACITY, 31,000; OFFENSE, T-formation; NICKNAME, Cornhuskers; COLORS, Scarlet and Cream; CONFERENCE, Big Seven; SERIES RECORD, Nebraska won 24, Missouri won 16, Tied 3; 1949 RECORD, 4-5-0; 1949 SCORES, Won from--South Dakota 33-6, Kansas State 13-6, Iowa State 7-0, and Colorado 25-14; Lost to--Minnesota 6-28, Penn State 7-22, Oklahoma 0-48, Missouri 20-21, and Kansas 13-27.

**COLORADO** -- LOCATION, Boulder, Colo.; ENROLLMENT, 9,000; FOUNDED, 1876; HEAD COACH, Dallas "Dal" Ward; STADIUM, Folsom Field; CAPACITY, 27,500; OFFENSE, Single Wing; NICKNAME, Golden Buffaloes; COLORS, Silver and Gold; CONFERENCE, Big Seven; SERIES RECORD, Colorado won 3, Missouri won 10, Tied 1; 1949 RECORD, 3-7-0; 1949 SCORES, Won from--Kansas 13-12, Utah State 20-7, and Utah 14-7; Lost to--Kansas State 13-27, Iowa State 6-13, Oregon 14-42, Missouri 13-20, New Mexico 15-17, Nebraska 14-25, and Colorado A & M 7-14.

**OKLAHOMA** -- LOCATION, Norman, Okla.; ENROLLMENT, 10,400; FOUNDED, 1892; HEAD COACH, Charles "Bud" Wilkinson; STADIUM, Owen Field; CAPACITY, 55,000; OFFENSE, Split T formation; NICKNAME, Sooners; COLORS, Red and White; CONFERENCE, Big Seven; SERIES RECORD, Oklahoma won 20, Missouri won 16, Tied 4; 1949 RECORD, 11-0-0 (incl. Sugar Bowl); 1949 SCORES, Won from--Boston College 46-0, Texas A & M 33-13, Texas 20-14, Kansas 48-26, Nebraska 48-0, Iowa State 34-7, Kansas State 39-0, Missouri 27-7, Santa Clara 28-21, Oklahoma A & M 41-0, and Louisiana State 35-0.

**KANSAS** -- LOCATION, Lawrence, Kan.; ENROLLMENT, 8,350; FOUNDED, 1866; HEAD COACH, Jules V. "Siki" Sikes; STADIUM, Memorial; CAPACITY, 38,000; OFFENSE, T-formation; NICKNAME, Jayhawkers; COLORS, Crimson and Blue; CONFERENCE, Big Seven; SERIES RECORD, Kansas won 27, Missouri won 24, Tied 7; 1949 RECORD, 5-5-0; 1949 SCORES, Won from--George Washington 21-14, Oklahoma A & M 55-14, Kansas State 38-0, Nebraska 27-13, and Arizona 46-0; Lost to--Texas Christian 0-28, Colorado 12-13, Iowa State 6-19, Oklahoma 26-48, and Missouri 28-34.

**MIAMI** -- LOCATION, Coral Gables, Fla.; ENROLLMENT, 10,304; FOUNDED, 1926; HEAD COACH, Andy Gustafson; STADIUM, Orange Bowl; CAPACITY, 65,000; OFFENSE, T-formation; NICKNAME, Hurricanes; COLORS, Orange, Green, and White; CONFERENCE, Southern; SERIES RECORD, First meeting; 1949 RECORD, 6-3-0; 1949 SCORES, Won from--Rollins 52-13, Louisville 26-0, Georgia 13-9, Detroit 27-6, South Carolina 13-7, and Florida 28-13; Lost to--Purdue 0-14, Kentucky 6-21, and Maryland 0-13.

# ALL-TIME SCORES AGAINST '50 OPPONENTS

<u>YEAR</u>	<u>M.U.</u>	<u>CLEM- SON</u>
1949	23	24
Totals	23	24

Missouri won 0,  
Clemson won 1.

<u>YEAR</u>	<u>M.U.</u>	<u>S.M.U.</u>
1926	7	7
1927	9	32
1945	10	7
1946	0	17
1947	19	35
1948	20	14
1949	27	28
Totals	92	140

Missouri won 2,  
S.M.U. won 4,  
Tied 1.

<u>YEAR</u>	<u>M.U.</u>	<u>KANSAS STATE</u>
1909	3	0
1914	13	3
1915	0	0
1916	6	7
1917	6	7
1919	6	6
1920	10	7
1921	5	7
1922	10	14
1923	4	2
1924	14	7
1925	3	0
1927	13	6
1928	19	6
1929	6	7
1930	13	20
1931	7	20
1932	0	25
1933	0	33
1934	0	29
1935	7	7
1936	7	7
1937	14	7
1938	13	21

(Cont. next col.)

<u>YEAR</u>	<u>M.U.</u>	<u>K.S.</u>
1939	9	7
1940	24	13
1941	35	0
1942	46	2
1943	47	14
1944	33	0
1945	41	7
1946	26	0
1947	46	7
1948	49	7
1949	34	27
Totals	570	322

Missouri won 20,  
K-State won 11,  
Tied 4.

<u>YEAR</u>	<u>M.U.</u>	<u>I-STATE</u>
1896	0	12
1908	0	16
1909	6	6
1910	5	6
1911	3	6
1912	0	29
1913	21	13
1914	0	6
1915	6	14
1916	0	0
1917	0	15
1919	10	0
1920	14	2
1921	17	14
1922	6	3
1923	0	2
1924	7	0
1925	23	8
1926	7	3
1927	13	6
1928	28	19
1929	19	0
1930	14	0
1931	0	20
1932	0	0
1933	7	14
1934	0	13
1935	6	6

(Cont. next col.)

<u>YEAR</u>	<u>M. U.</u>	<u>I-STATE</u>
1936	10	0
1937	12	0
1938	13	16
1939	21	6
1940	30	14
1941	39	13
1942	45	6
1943	25	7
1944	21	21
1945	13	7
1946	33	13
1947	26	7
1948	49	7
1949	<u>32</u>	<u>0</u>
Totals	581	350

Missouri won 24,  
I-State won 13,  
Tied 5.

<u>YEAR</u>	<u>M. U.</u>	<u>OKLA. A &amp; M</u>
1915	13	6
1921	36	0
1949	<u>21</u>	<u>7</u>
Totals	70	13

Missouri won 3,  
Okla. A&M won 0.

<u>YEAR</u>	<u>M. U.</u>	<u>NEB.</u>
1892	0	6
1893	18	12
1894	18	14
1895	10	12
1896	4	8
1897	0	42
1898	6	47
1899	11	0
1900	0	12
1901	0	51
1902	0	12
1911	0	34
1912	0	7
1917	0	52
1919	5	12
1922	0	48
1923	7	7
1924	6	14

(Cont. next col.)

<u>YEAR</u>	<u>M. U.</u>	<u>NEB.</u>
1925	9	6
1926	14	7
1927	7	6
1928	0	24
1929	7	7
1930	0	0
1931	7	10
1932	6	21
1933	0	26
1934	6	13
1935	6	19
1936	0	20
1937	0	7
1938	13	10
1939	27	13
1940	7	20
1941	6	0
1942	26	6
1943	54	20
1944	20	24
1945	19	0
1946	21	20
1947	47	6
1948	33	6
1949	<u>21</u>	<u>20</u>
Totals	441	701

Missouri won 16,  
Nebraska won 24,  
Tied 3.

<u>YEAR</u>	<u>M. U.</u>	<u>COLO.</u>
1930	0	9
1931	7	9
1934	0	0
1935	20	6
1937	6	14
1938	14	7
1939	30	0
1940	21	6
1941	21	6
1942	26	13
1946	21	0
1947	21	0
1948	27	13
1949	<u>20</u>	<u>13</u>
Totals	234	96

Missouri won 10,  
Colorado won 3,  
Tied 1.

<u>YEAR</u>	<u>M.U.</u>	<u>OKLA.</u>
1902	22	5
1910	26	0
1911	6	14
1912	14	0
1913	20	17
1914	0	13
1915	0	24
1916	23	14
1917	7	14
1919	6	6
1920	7	28
1921	24	14
1922	14	18
1923	0	13
1924	10	0
1925	16	14
1926	7	10
1927	20	7
1928	0	14
1929	13	0
1930	0	0
1931	7	0
1932	14	6
1933	0	21
1934	0	31
1935	6	20
1936	21	14
1937	0	7
1938	0	21
1939	7	6
1940	0	7
1941	28	0
1942	6	6
1943	13	20
1944	21	21
1945	14	6
1946	6	27
1947	12	21
1948	7	41
1949	7	27
Totals	404	527
Missouri won 17, Okla. won 20, Tied 3.		
<u>YEAR</u>	<u>M.U.</u>	<u>K.U.</u>
1891	8	22
1892	4	12
1892	12	4
1894	12	18
1895	10	6
1896	0	30
1897	0	16
1898	0	12
1899	6	34
1900	6	6

(Cont. next col.)

<u>YEAR</u>	<u>M.U.</u>	<u>K.U.</u>
1901	18	12
1902	5	17
1903	0	5
1904	0	29
1905	0	24
1906	0	0
1907	0	4
1908	4	10
1909	12	6
1910	5	5
1911	3	3
1912	3	12
1913	3	0
1914	10	7
1915	6	8
1916	13	0
1917	3	27
1919	13	6
1920	16	7
1921	9	15
1922	9	7
1923	3	3
1924	14	0
1925	7	10
1926	15	0
1927	7	14
1928	25	6
1929	7	0
1930	0	32
1931	0	14
1932	0	7
1933	0	27
1934	0	20
1935	0	0
1936	19	3
1937	0	0
1938	13	7
1939	20	0
1940	45	20
1941	45	6
1942	42	13
1943	6	7
1944	28	0
1945	33	12
1946	19	20
1947	14	20
1948	21	7
1949	34	28
Totals	607	640
Missouri won 24, K.U. won 27, Tied 7.		

<u>YEAR</u>	<u>M.U.</u>	<u>MIAMI</u>
(No previous game with Miami)		

## 1949 BIG SEVEN STANDINGS

<u>Team</u>	<u>W</u>	<u>L</u>	<u>T</u>	<u>Pct.</u>	<u>Pts.</u>	<u>Opp. Pts.</u>
Oklahoma	5	0	0	1.000	196	40
Missouri	5	1	0	.833	148	115
Iowa State	3	3	0	.500	64	106
Nebraska	3	3	0	.500	78	116
Kansas	2	4	0	.333	137	127
Colorado	1	4	0	.200	59	97
Kansas State	1	5	0	.167	81	162

## CONFERENCE FOOTBALL CHAMPIONS

### BIG SIX

<u>Year</u>	<u>Team</u>	<u>W</u>	<u>L</u>	<u>T</u>	<u>Pct.</u>	<u>Coach</u>
1928	Nebraska	5	0	0	1.000	Ernest Bearg
1929	Nebraska	3	0	2	1.000	Dana Bible
1930	Kansas	4	1	0	.800	Bill Hargiss
1931	Nebraska	5	0	0	1.000	Dana Bible
1932	Nebraska	5	0	0	1.000	Dana Bible
1933	Nebraska	5	0	0	1.000	Dana Bible
1934	Kans. State	5	0	0	1.000	Lynn Waldorf
1935	Nebraska	4	0	1	.900*	Dana Bible
1936	Nebraska	5	0	0	1.000	Dana Bible
1937	Nebraska	3	0	2	.800	L.M. "Biff" Jones
1938	Oklahoma	5	0	0	1.000	Tom Stidham
1939	Missouri	5	0	0	1.000	Don Faurot
1940	Nebraska	5	0	0	1.000	L.M. "Biff" Jones
1941	Missouri	5	0	0	1.000	Don Faurot
1942	Missouri	4	0	1	.900	Don Faurot
1943	Oklahoma	5	0	0	1.000	Dewey Luster
1944	Oklahoma	4	0	1	.900	Dewey Luster
1945	Missouri	5	0	0	1.000	Chauncey Simpson
1946	Oklahoma	4	1	0	.800	Jim Tatum
1946	Kansas	4	1	0	.800	George Sauer
1947	Oklahoma	4	0	1	.900	Bud Wilkinson
1947	Kansas	4	0	1	.900	George Sauer

### BIG SEVEN

1948	Oklahoma	5	0	0	1.000	Bud Wilkinson
1949	Oklahoma	5	0	0	1.000	Bud Wilkinson

\* Tie games went into the records as 1/2 game won and 1/2 game lost.

## TIGERS' 1949 GAME-BY-GAME STATISTICS

Opponent	RUSHING		TIGER PASSING				OPPONENTS PASSING			
	Tiger Net	Opp. Net	Att.	Comp.	Had Int.	Yds. Gain	Att.	Comp.	Had Int.	Yds. Gain
Ohio State	250	259	25	13	1	257	24	11	0	171
S.M.U.	206	284	12	7	0	110	8	4	0	66
Oklahoma A & M	193	127	23	10	2	219	27	14	4	230
Illinois	221	264	10	5	0	79	25	11	2	95
Iowa State	406	96	10	3	1	57	30	9	2	114
Nebraska	162	186	17	8	1	100	5	1	1	10
Colorado	143	112	39	20	1	242	14	5	1	53
Oklahoma	45	257	34	9	2	118	10	2	0	12
Kansas	465	131	21	13	0	200	22	9	2	134
Kansas State	310	96	13	7	1	77	25	18	0	225
10-GAME TOTAL	2401	1812	204	95	9	1459	190	84	12	1110
Maryland(Gator Bowl)	106	226	29	11	3	184	17	2	1	16
11-GAME TOTAL	2507	2038	233	106	12	1643	207	86	13	1126

## INDIVIDUAL STATISTICS -- 1949

	RUSHING				
	Carries	Gain	Lost	Net	Avg.
Braznell, hb	145	836	70	766	5.3
Glorioso, hb	110	671	75	596	5.4
W. Carter, fb	95	443	7	436	4.5
Houston, fb	37	161	4	157	4.2
Klein, qb	76	276	115	161	2.1
Sauer, qb	41	117	9	108	2.6
Henley, hb	17	85	21	64	3.8

	PASSING				
	Att.	Comp.	Had Int.	Yds.	TD
Klein, qb	112	55	5	808	4
Braznell, hb	54	24	1	376	1
Glorioso, hb	34	17	2	324	2
Henley, hb	12	4	0	58	1
Sauer, qb	9	3	2	50	0

	PASS RECEIVING		
	No. Caught	Yds.	TD Passes
Ackermann, e	42	621	2
Bounds, e	13	284	0
Glorioso, hb	11	212	2
Braznell, hb	9	165	2
Hulse, e	13	160	1
Armstrong, e	9	108	1
H. Carter, hb	5	80	0

	TOTAL OFFENSE		
	No.	Plays	Net Gain Avg.
Braznell, hb	199	1142	5.7
Glorioso, hb	144	920	6.3
Klein, qb	188	969	5.1
W. Carter, fb	95	436	4.6
Sauer, qb	50	158	3.1
Houston, fb	37	157	4.2
Henley, hb	29	122	4.2

	KICKOFF RETURNS			
	No.	Yds.	Ret.	Avg.
Braznell, hb	11	232	1	21.0
Henley, hb	3	67		22.3
H. Carter, hb	3	63		21.0
Hulse, e	2	40		20.0

	PUNTING			
	No.	Yds.	Avg.	Blckd.
Wren, hb	11	425	38.6	1
Henley, hb	4	153	38.25	0
Klein, qb	35	1125	32.1	1

	PASS INTERCEPTIONS		
	No.	Yds.	Ret.
Glorioso, hb	4	63	
Ghnouly, hb	4	49	
Frier, qb	1	19	
Stephens, hb	1	14	
Hulse, e	1	12	
Armstrong, e	1	7	
W. Carter, fb	1	3	

	SCORING		
	TD's	PAT	Total
Glorioso, hb	8	29	77
Braznell, hb	10		60
Klein, qb	9		54
W. Carter, fb	3		18
Ackerman, e	2		12
Sauer, qb	2		12
Henley, hb	1		6
Armstrong, e	1		6
Hulse, e	1		6
Carras, hb	1		6
Houston, fb	1		6
Deneke, fb	0	1	1
Totals	39	30	264



# MISSOURI'S ALL-TIME FOOTBALL RECORDS

## INDIVIDUAL RECORDS

**MOST POINTS COLLEGE CAREER--Bob Steuber--222 points (1940-42)**

1940 5 TD's 4 PAT's 34 Points

1941 9 TD's 13 PAT's 67 Points

1942 18 TD's 13 PAT's 121 Points

**MOST POINTS ONE SEASON--Bob Steuber--121 (1942)**

**MOST POINTS ONE GAME--Bob Steuber--20 (Iowa State, 1942)**

3 TD-s 2 PAT's

**MOST TOUCHDOWNS COLLEGE CAREER--Bob Steuber--32 (1940-42)**

**MOST TOUCHDOWNS ONE SEASON--Bob Steuber--18 (1942)**

**MOST TOUCHDOWNS ONE GAME--**

3--Paul Christman (Colorado 1939)

3--Harry Ice (Iowa State 1940)

3--Bob Steuber (St. Louis 1942)

3--Bob Steuber (Iowa State 1942)

3--Bill Dellastatious (Iowa State 1943)

3--Bill Dellastatious (Minnesota 1944)

3--Phil Klein\* (Ohio State, 1949)

**MOST CONVERSIONS COLLEGE CAREER--Bob Dawson--59 (1947-49)**

3 made in 'Gator Bowl, Jan. 1, 1949.

22 consecutive conversions--from '47 Colorado game through '48 Colorado game.

**MOST CONVERSIONS ONE SEASON--Bob Dawson--38 (1948)**

**MOST CONVERSIONS ONE GAME--Bob Dawson**

7 for 7--(Iowa State 1948)

7 for 7--(Kansas State 1948)

(Made on consecutive Saturdays)

**MOST RUSHING YARDS COLLEGE CAREER --**

Bob Steuber--2004 yards (1940-42)

1940 10 carries for 51

1941 113 carries for 855

1942 149 carries for 1098

(6.9 yards average--college career)

**MOST RUSHING YARDS ONE SEASON--Bob Steuber--1098 yards (1942)**

**MOST RUSHING YARDS ONE GAME--Harry Ice--218 (Kansas 1941)**

11 tries

**MOST PASSES COMPLETED COLLEGE CAREER--Paul Christman--**

195 for 426 and 3056 (1938-40)

1938 61 for 142 and 1087 yards

1939 64 for 134 and 774 yards

1940 70 for 150 and 1195 yards

**MOST PASSES COMPLETED ONE SEASON--Paul Christman--70 for**

150 and 1195 yards (1940)

\* Still in competition

**MOST PASSES COMPLETED ONE GAME--**Paul Christman--16 for  
 35 and 310 yards. (Kansas State 1938)  
**MOST TOUCHDOWN PASSES THROWN COLLEGE CAREER--**  
 25--Paul Christman (1938-40)  
**MOST TOUCHDOWN PASSES THROWN ONE SEASON--**  
 13--Paul Christman (1940)  
**MOST TOUCHDOWN PASSES THROWN ONE GAME--**  
 3--Paul Christman (Nebraska 1939)  
 3--Paul Christman (St. Louis 1940)  
 3--Paul Christman (K-State 1940)  
**MOST PASSES CAUGHT COLLEGE CAREER--**  
 50--James Starmer (1938-40)  
**MOST PASSES CAUGHT ONE SEASON--**42--Gene Ackermann\* (1949)  
**MOST PASSES CAUGHT ONE GAME--**  
 9--Gene Ackermann\* (Colorado 1949)  
**MOST PASSING YARDAGE BY A RECEIVER COLLEGE CAREER--**  
 772--James Starmer (1938-40)  
 1938 25 for 437 yards  
 1939 12 for 194 yards  
 1940 13 for 141 yards  
**MOST PASSING YARDAGE BY A RECEIVER ONE SEASON--**  
 621--Gene Ackermann\* (1949)  
**MOST PASSING YARDAGE BY A RECEIVER ONE GAME--**  
 146--Gene Ackermann\* (Ohio State 1949)  
**MOST TOTAL YARDS (RUSH AND PASS) COLLEGE CAREER--**  
 4133--Paul Christman (1938-40)  
**MOST TOTAL YARDS (RUSH AND PASS) ONE SEASON--**  
 1487--Paul Christman (1938)  
**MOST TOTAL YARDS (RUSH AND PASS) ONE GAME--**  
 332--Paul Christman (1938 K-State)--39 plays for 332 yards  
**LONGEST RUSH FROM SCRIMMAGE--**  
 90 yards for TD--Harry Ice (Iowa State 1941)  
**LONGEST PASS COMPLETION--**  
 77 yards (catch and run) Steuber to Bert Ekern (Iowa State 1942)  
**LONGEST PUNT RUNBACK--**82 yards--Dick Braznell (Ohio State 1948)  
**LONGEST RUNBACK OF FORWARD INTERCEPTION--**  
 95 yards for TD--Lloyd Brinkman (St. Louis 1946)  
**LONGEST RUNBACK OF LATERAL INTERCEPTION--**  
 77 yards for TD--Don Greenwood (Iowa State 1940)  
**LONGEST KICKOFF RETURN--**100 yards--Russell Dills (Kansas 1928)  
**LONGEST PUNT--**72 yards--Bob Faurot (Oklahoma 1937)  
**LONGEST FIELD GOAL FROM SCRIMMAGE--**  
 49 yards--Al Lincoln (Kansas 1922)  
**BEST PUNTING AVERAGE ONE GAME--**  
 46.8 yards for 6 punts--Bill Day (Ohio State 1947)

\* Still in competition.

## TEAM RECORDS

- MOST POINTS ONE GAME--60 (St. Louis 1948)  
60 (Centre 1928)
- MOST POINTS ONE SEASON--331 for 11 games in 1948
- MOST OPPONENT'S POINTS ONE GAME--65 (Texas 1932)  
54 (Ohio State 1944)
- MOST OPPONENT'S POINTS ONE SEASON--224 for 10 games (1944)
- LEAST POINTS ONE SEASON--31 (1923 for 8 games)
- LEAST OPPONENT'S POINTS ONE SEASON--17 (1910 for 8 games)
- GREATEST WINNING MARGIN--60-0 (Centre 1928)
- GREATEST LOSING MARGIN--65-0 (Texas 1932)  
54-0 (Ohio State 1944)
- MOST FIRST DOWNS ONE SEASON--194 (1949 for 11 games)
- MOST FIRST DOWNS ONE GAME--31 (1949 Kansas game)
- MOST OPPONENT'S FIRST DOWNS--20 (Ohio State 1948)
- LEAST MISSOURI FIRST DOWNS--4 (Ohio State 1943)  
4 (Minnesota 1945)
- LEAST OPPONENT'S FIRST DOWNS--1 (Colorado 1946)
- MOST RUSHING YARDS ONE SEASON--3230 (1942 for 12 games)
- MOST RUSHING YARDS ONE GAME--466 (1947 K-State game)
- MOST OPPONENT'S RUSHING YARDS ONE GAME--  
457 (Iowa Seahawks 1944)
- LEAST OPPONENT'S RUSHING YARDS ONE GAME--10 (K-State 1942)
- LEAST MISSOURI RUSHING YARDS ONE GAME--  
12--(Iowa Seahawks 1944)
- MOST PASSING YARDS ONE SEASON--1642 (1949)
- MOST PASSES COMPLETED OF TOTAL THROWN ONE GAME--  
20 for 39 and 242 yards (Colorado 1949)
- MOST TOTAL YARDS (RUSH AND PASS) ONE SEASON--  
4272 (1942, 12 games)  
(3230R and 1042P)
- MOST TOTAL YARDS (RUSH AND PASS) ONE GAME--  
665 (Kansas 1949)  
(465R and 200P)
- MOST PASSES THROWN ONE SEASON--229 (1949)
- MOST PASSES THROWN ONE GAME--39 (Colorado 1949)
- MOST CONSECUTIVE GAMES WON--9 (1909-10)
- MOST CONSECUTIVE GAMES WON (Faurot era)--8 (1941)
- MOST CONSECUTIVE GAMES LOST--  
9--(From 1931 St. Louis game thru 1932 Northwestern game)  
9--(From 1932 St. Louis game thru 1933 St. Louis game)  
9--(From 1933 K-State game thru 1934 Chicago game)
- MOST OFFENSIVE PLAYS ONE GAME--105 (Kansas 1949)\*\*
- MOST FUMBLES ONE GAME--10 (1941 Colorado game)--Recovered 6
- MOST FUMBLES LOST ONE GAME--7 out of 7 (Kansas 1949)

\*\* National Record.

## MISCELLANEOUS

- WORST DEFEAT NON-CONFERENCE--65-0 (Texas 1932)  
WORST DEFEAT CONFERENCE--48-0 (Nebraska 1922)  
GREATEST WINNING MARGIN NON-CONFERENCE--  
60-0 (Centre 1928)  
GREATEST WINNING MARGIN CONFERENCE--46-2 (K-State 1942)  
LONGEST TOUCHDOWN RUN--90 yards--Harry Ice (Iowa State 1941)  
LONGEST TOUCHDOWN DRIVE--  
100 yards (1939 N.Y.U. game)--Christman scored  
MOST GAMES MISSOURI HELD SCORELESS ONE SEASON--6 (1934)  
MOST GAMES OPPONENT HELD SCORELESS ONE SEASON--6 (1924)  
MOST PASS INTERCEPTIONS ONE SEASON--28 (1941)  
MOST PASS INTERCEPTIONS BY OPPONENTS ONE GAME--  
6--(Ohio State 1944)  
MOST PASS INTERCEPTIONS BY MISSOURI ONE GAME--  
8--(Iowa State 1946)  
MOST YARDS LOST BY PENALTIES ONE GAME--155 (K-State 1947)  
LEAST YARDS LOST BY PENALTIES ONE GAME--0 (Oklahoma 1943)  
LARGEST HOME CROWD--37,152 (Oklahoma 1949)  
LARGEST AWAY CROWD--66,510 (Ohio State 1949)

## MAILING LIST

The following newspaper and radio men who regularly cover the Tigers will be interested in receiving your football releases throughout the season.

### PRESS

J.P. Hamel, Columbia Tribune, Columbia, Mo.  
Rowland Smith, Columbia Tribune, Columbia, Mo.  
Sports Editor, Columbia Missourian, Columbia, Mo.  
Sports Editor, Missouri Student, Columbia, Mo.  
Skipper Patrick, Associated Press, Star Building, Kansas City, Mo.  
Sam Smith, United Press, City Bank Building, Kansas City, Mo.  
Joe Oppenheimer, I.N.S., 550 Star-Times Building, St. Louis, Mo.  
Bob Busby, Sports Desk, Kansas City Star, Kansas City, Mo.  
Bob Burnes, Sports Editor, Globe-Democrat, St. Louis, Mo.  
Sid Keener, Sports Editor, Star-Times, St. Louis, Mo.  
Bob Broeg, Sports Desk, Post-Dispatch, St. Louis, Mo.  
Ernie Mehl, Sports Editor, Kansas City Star, Kansas City, Mo.  
Gene Sullivan, Sports Editor, News-Press, St. Joseph, Mo.

### RADIO

Mahlon Aldridge, Radio Station KFRU, Columbia, Mo.  
Harold Douglas, Ration Station KFRU, Columbia, Mo.  
Sam Molen, Radio Station KMBC, Kansas City, Mo.  
Tony Williams, Radio Station KCMO, Kansas City, Mo.  
Larry Ray, Radio Station WHB, Kansas City, Mo.  
Vic Peck, Radio Station WDAF, Kansas City, Mo.  
Harold Grams, Radio Station KSD, St. Louis, Mo.  
Sports Director, Radio Station KMOX, St. Louis, Mo.  
Harry Caray, Radio Station WIL, St. Louis, Mo.

### TIGERS' 1949 ALL-OPPONENT TEAM

Ends . . . . . Jim Owens, Oklahoma; Walt Kersulis, Illinois  
Tackles . . . . . Jack Wilson, Ohio State; Wade Walker, Oklahoma  
Guards . . . . . Jack Halliday, S.M.U.; Stan West, Oklahoma  
Center . . . . . Tom Novak, Nebraska  
Quarterback . . . . . Darrel Royal, Oklahoma  
Halfbacks . . . . . Doak Walker, S.M.U.; Ray Hamilton, Ohio State  
Fullback . . . . . Russ Steger, Illinois

# MISSOURI'S ALL-CONFERENCE SELECTIONS

## BIG SIX & BIG SEVEN

1928-1949

- 1928--Miller Brown, end; Bob Mehrle, halfback.  
1929--Keith Hursley, tackle; John Waldorf, halfback; Raymond Smith, center; Paul Brayton, guard.  
1931--Charles Schiele, end.  
1932--Charles Schiele, end.  
1935--Clair Houston, fullback.  
1936--Huston Betty, center.  
1937--Maurice Kirk, guard.  
1938--Paul Christman, halfback; Kenneth Haas, tackle.  
1939--Paul Christman,\* halfback; Kenneth Haas, tackle; Roland Orf, end; Charles Moser, center; Robert Waldorf, guard.  
1940--Paul Christman,\* halfback; Darold Jenkins, center.  
1941--Darold Jenkins,\* center; Bob Jeffries, guard; Robert Steuber, halfback; Norville Wallach, tackle; Don Reece, fullback.  
1942--Robert Steuber,\* halfback.  
1943--Alfred Anderson, tackle; Jack Morton, end; Don Reece, fullback.  
1944--Paul Collins, quarterback; Bill Dellastatious, halfback; Jim Kekeris, tackle.  
1945--Jim Kekeris, tackle; Bob Hopkins, halfback; Leonard Brown, quarterback; Roland Oakes, end; Ralph Stewart, center; Bob Eigelberger, guard.  
1946--Jim Kekeris, tackle; Loyd Brinkman, halfback; Ralph Stewart, center; Roland Oakes, end.  
\*\*1947--Harold Entsminger, quarterback; Chester Fritz, tackle; Mel Sheehan, end.  
1948--Harold Entsminger, quarterback; Chester Fritz, tackle; Mel Sheehan, end; Bob Fuchs, center.  
1949--Dick Braznell, halfback.

\* All-American

\*\* Big Six conference became Big Seven

## MISSOURI'S ATHLETIC COMMITTEE

Dean Sam B. Shirky, Chairman

Mr. Oak Hunter, Moberly, Mo.

Dean Loren G. Townsend

Mr. Elmer Weber, St. Louis, Mo.

Dr. D. A. Hindman

# YEAR-BY-YEAR FOOTBALL RECORD--1890-1949--

Year	Coach	Won	Lost	Tied	Points		Captain
					Scored	Against	
1890	A. L. McRae	2	1		112	28	William R. Littell
1891	Hal Reid	3	1		106	28	Curtis Hill
1892	E. H. Jones	1	2		28	18	D. L. Shawhan
1893	H. L. Robinson	4	3		142	130	Charles E. Young
1894	H. L. Robinson	4	3		134	98	Charles E. Young
1895	C. D. "Pop" Bliss	7	1		156	42	Charles E. Young
1896	Frank Patterson	8	5		273	78	Thomas R. Shawhan
1897	Charles Young	4	6	1	102	143	Adam Hill
1898	David L. Fultz	2	3	1	73	98	Thomas P. Howard
1899	David L. Fultz	9	2		242	58	John Kramer
1900	Fred Murphy	4	4	1	71	80	Carl Kruse
1901	Fred Murphy	2	6	1	31	154	Charles Washer
1902	Pat O'Dea	5	3		99	80	Thomas M. Ellis
1903	John F. McLean	1	7	1	46	83	Abner Birney
1904	John F. McLean	3	6		61	131	Homer H. Haggard
1905	John F. McLean	5	4		94	79	Harvey W. Anderson
1906	W. J. Monilaw	5	2	1	116	44	B. W. Tillman
1907	W. J. Monilaw	7	2		278	41	Edwin L. Miller
1908	W. J. Monilaw	6	2		196	47	Edwin L. Miller
1909	William W. Roper	7	0	1	86	36	Carl L. Ristine
1910	W. Hollenbeck	4	2	2	77	17	Franklin Thacher
1911	C. L. Brewer	2	4	2	61	67	Glen B. Shuck
1912	C. L. Brewer	5	3		135	69	Clarence P. LeMire
1913	C. L. Brewer	7	1		193	67	Charles R. Wilson
1914	H. F. Schulte	5	3		124	47	James A. Clay
1915	H. F. Schulte	2	5	1	72	102	Jacob Speelman
1916	H. F. Schulte	6	1	1	112	21	Harry S. Lansing
1917	H. F. Schulte	3	5		98	124	Paul Hamilton
1918	H. F. Schulte	No Varsity					
1919	John F. Miller	5	1	2	91	42	Anton Stankowski
1920	John F. Miller & James Phelan	7	1		156	61	Charles L. Lewis
1921	James Phelan	6	2		136	50	Herbert Blumer
1922	Thomas Kelly	5	3		98	90	Herbert Bunker
1923	Gwinn Henry	2	3	3	31	40	Clyde Smith
1924	Gwinn Henry	7	2		110	41	Arthur D. Bond
1925	Gwinn Henry	6	1	1	110	44	Samuel Whiteman
1926	Gwinn Henry	5	1	2	122	33	Carl Bacchus
1927	Gwinn Henry	7	2		129	90	George Flamank
1928	Gwinn Henry	4	4		138	102	Miller Brown
1929	Gwinn Henry	5	2	1	78	28	John Waldorf
1930	Gwinn Henry	2	5	2	41	132	Leonard McGirl
1931	Gwinn Henry	2	8		72	183	Frank Bittner
1932	Frank Carideo	1	7	1	32	184	Kenneth Kerby
1933	Frank Carideo	1	8		58	193	Charles Schiele
1934	Frank Carideo	1	8		25	172	Dan Caldwell
1935	Don Faurot	3	3	3	97	77	Clair Houston
1936	Don Faurot	6	2	1	107	74	Al Londe
1937	Don Faurot	3	6	1	42	64	Maurice Kirk
1938	Don Faurot	6	3		111	82	Frank Dickenson
1939	Don Faurot	8	2		155	79	Kenneth Haas
1940	Don Faurot	6	3		213	125	Jack Crocker
1941	Don Faurot	8	2		226	39	Darold Jenkins
1942	Don Faurot	8	3		288	107	Don Reece
1943	Chauncey Simpson	3	5		170	142	Game Captain
1944	Chauncey Simpson	3	5	2	176	224	Paul Collins
1945	Chauncey Simpson	6	4		170	174	Game Captain
1946	Don Faurot	5	4	1	158	166	Ralph Stewart
1947	Don Faurot	6	4		238	116	Verlie Abrams & Roland Oakes
1948	Don Faurot	8	3		331	161	Chester Fritz
1949	Don Faurot	7	4		264	225	Bob Fuchs

# 1950 SCHEDULES OF MISSOURI'S OPPONENTS 1950

		SEPT. 23	SEPT. 30	OCT. 7	OCT. 14	OCT. 21	OCT. 28	NOV. 4	NOV. 11	NOV. 18	NOV. 25	DEC. 2
CLEMSON	PERREYER- IAN * AT CLEMSON	MISSOURI AT COLUMBIA	NO. CAROLINA STATE * AT CLEMSON	OPEN	SO. CAROLINA AT COLUMBIA	WAKE FOREST AT WINSTON- SALEM	DIOUESNE AT CLEMSON	BOSTON COLLEGE AT BOSTON	FURMAN AT CLEMSON	AUBURN AT AUBURN		TEXAS CHRISTIAN AT DALLAS
SOUTHERN METHODIST	GEORGIA TECH * AT DALLAS	OHIO STATE AT COLUMBUS	MISSOURI AT COLUMBIA	OKLAHOMA A & M * AT DALLAS	RICE * AT HOUSTON	OPEN	TEXAS AT AUSTIN	TEXAS A & M * AT DALLAS	ARKANSAS AT LITTLE ROCK	BAYLOR AT DALLAS		TEXAS CHRISTIAN AT DALLAS
KANSAS STATE	SEPT. 16 BAKER * AT MANHATTAN	WASHINGTON (MO.) AT ST. LOUIS	COLORADO AT BOULDER	MARQUETTE * MILWAUKEE	MISSOURI AT MANHATTAN	OKLAHOMA NORMAN	OPEN	IOWA STATE AT MANHATTAN	NEBRASKA AT LINCOLN	KANSAS AT MANHATTAN	OKLAHOMA A & M AT STILLWATER	OKLAHOMA AT WICHITA
IOWA STATE	COLORADO AT AMES	NORTHWEST- ERN AT EVANSTON	IOWA TEACHERS AT AMES	KANSAS AT AMES	MISSOURI AT COLUMBIA	OKLAHOMA AT AMES	KANSAS STATE AT MANHATTAN	DRAKE AT AMES	NEBRASKA AT LINCOLN	NEBRASKA AT LINCOLN	ARIZONA * AT TUCSON	
OKLAHOMA A & M	ARKANSAS * AT LITTLE ROCK	TEXAS CHRISTIAN AT STILLWATER	OCT. 6 DRAKE * AT DES MOINES	SOUTHERN METHODIST * AT DALLAS	KANSAS AT LAWRENCE	MISSOURI AT STILLWATER	TULSA AT TULSA	WICHITA AT WICHITA	DETROIT AT STILLWATER	KANSAS STATE AT STILLWATER		OKLAHOMA AT STILLWATER
NEBRASKA	OPEN	INDIANA AT LINCOLN	MINNESOTA AT MINNEAPOLIS	COLORADO AT BOULDER	PENN STATE AT LINCOLN	KANSAS AT LAWRENCE	MISSOURI AT LINCOLN	KANSAS STATE AT LINCOLN	IOWA STATE AT LINCOLN	OKLAHOMA AT LINCOLN		OKLAHOMA AT NORMAN
COLORADO	IOWA STATE AT AMES	KANSAS STATE AT BOULDER	KANSAS AT LAWRENCE	NEBRASKA AT BOULDER	ARIZONA AT BOULDER	UTAH AT SALT LAKE CITY	MISSOURI AT BOULDER	MISSOURI AT COLUMBIA	OREGON AT BOULDER	COLORADO AT FT. COLLINS		
OKLAHOMA	OPEN	BOSTON COLLEGE AT NORMAN	TEXAS A & M AT NORMAN	TEXAS AT DALLAS	KANSAS STATE AT NORMAN	IOWA STATE AT AMES	COLORADO AT BOULDER	KANSAS AT LAWRENCE	MISSOURI AT NORMAN	NEBRASKA AT NORMAN		OKLAHOMA A & M AT STILLWATER
KANSAS	TEXAS CHRISTIAN AT LAWRENCE	SEPT. 29 DENVER * AT DENVER	COLORADO AT LAWRENCE	IOWA STATE AT AMES	OKLAHOMA A & M AT LAWRENCE	NEBRASKA AT LAWRENCE	UTAH AT SALT LAKE CITY	OKLAHOMA AT LAWRENCE	KANSAS STATE AT MANHATTAN		NOV. 23 MISSOURI AT COLUMBIA	
MIAMI	OPEN	SEPT. 29 CITADEL * AT MIAMI	OCT. 6 VILLANOVA * AT MIAMI	PURDUE AT LAFAYETTE	OCT. 20 BOSTON UNIVERSITY * AT MIAMI	PITTSBURGH AT PITTSBURGH	NOV. 3 GEORGETOWN * AT MIAMI	NOV. 10 LOUISVILLE * AT MIAMI	FLORIDA AT GAINESVILLE	NOV. 24 IOWA * AT MIAMI		DEC. 1 MISSOURI AT MIAMI

\* NIGHT GAME



University Libraries  
University of Missouri

## Digitization Information Page

Local identifier MizFootballGuide1950

### Source information

Format Book  
Content type Text with images  
Source ID University Archives C:31/00/8  
Notes

### Capture information

Date captured Jan 2024  
Scanner manufacturer Plustek OpticBook  
Scanner model A300 Plus  
Scanning system software Book Pavilion  
Optical resolution 600 dpi  
Color settings 24 bit color covers; 8 bit grayscale for the rest  
File types tiff  
Notes

### Derivatives - Access copy

Compression Tiff: LZW compression  
Editing software Adobe Photoshop 2023  
Resolution 600 dpi  
Color color covers; grayscale for the rest  
File types tiff  
Notes Images cropped, straightened, brightened