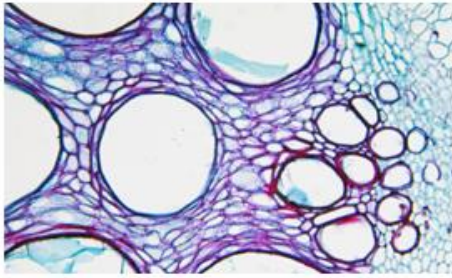


# Missouri Technology Expo 2010

October 7, 2010 • Christopher S. Bond Life Sciences Center • University of Missouri Campus • Columbia, MO

## Organizations that will be represented:

ABC Laboratories Inc  
Armstrong Teasdale LLP  
Bank of Missouri  
BioGenerator  
Blue Springs EDC  
Boehringer Ingelheim Vetmedica, Inc  
Bond Life Sciences Center  
Boone County National Bank  
CardiaLen Inc.  
Center for Workforce Development  
Central Missouri Community Action  
China Pharmahub Corp  
Chubb Insurance  
City of Odessa  
CLIMB  
CNETS  
Columbia Daily Tribune  
Commerce Bank  
Dalton Cardiovascular Research Center  
Daniel & Henry Company  
Department of Molecular Microbiology & Immunology  
Department of Psychological Sciences Brain Imaging  
Double "D" Enterprises LLC  
Economic Development Corporation  
Enterprise Development Corporation  
Excellence in Missouri Foundation  
EXPLOR Bioventures  
Gerke Associates  
Global Patent Group  
Green Technology Solutions  
Hill's Pet Nutrition Inc.  
House of Representatives  
Hovey Williams LLP  
Human Environmental Sciences Extension  
Hybrid Drivetrains  
Innovate Venture Mentoring Service  
Innovative Energy Inc  
Intermark United  
International Programs  
Kaleidoscope Videoconferencing  
Klintworth Rozenblat IP LLC



# Missouri Technology Expo 2010

October 7, 2010 • Christopher S. Bond Life Sciences Center • University of Missouri Campus • Columbia, MO

## Organizations that will be represented:

Knowledge Sharing Systems

Leggett Platt

Linn State Technical College

MAE

MedAscent Group LLC

MedSocket LLC

Merial

Missouri Department of Economic Development

Missouri Economic Development

Missouri S&T

Missouri Small Business Technology Development Center

Missouri Technology Corporation

Missouri University of Science & Technology

Mizzou Advantage

Mizzou Advantage - Media of the Future

MO SBTDC

MoFAST

Monsanto Company

Moresource

Mortgage Research Center

Nanoparticle BioChem Inc

NanoTechnology Enterprise Consortium NTEC

NEMS/MEMS Works LLC

Nidus Investment Partners

NSEI

NUtech Ventures

O'Connor Electromagnetic Systems OCEMS

Office of Sponsored Programs

P.Mean Consulting

Petscreen Inc

Polsinelli Shughart

Polster Lieder Woodruff Lucchesi LC

Prism Insight

Professional Contractors Engineers

Prolog Ventures LLC

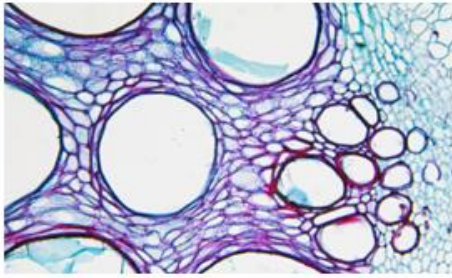
RBC

Regional Economic Development Inc.

Rigel Technology Corporation

SCD Probiotics

SCOPE



# Missouri Technology Expo 2010

October 7, 2010 • Christopher S. Bond Life Sciences Center • University of Missouri Campus • Columbia, MO

## Organizations that will be represented:

Stinson Morrison Hecker LLP

The District

The Idea Works Inc

The Reger Group

Thompson Coburn LLP

UMKC SBTDC

University Center for Innovation & Entrepreneurship

University of Missouri

University of Missouri College of Engineering

University of Missouri Columbia

University of Missouri - Kansas City

University of Missouri - Kansas City  
Technology Transfer

University of Missouri - St. Louis

University of Missouri - St. Louis College of Optometry

University of Missouri Asian Affairs Center

University of Missouri Biochemistry Department

University of Missouri Biodesign & Innovation Program

University of Missouri College of Agriculture

University of Missouri College of Engineering

University of Missouri - Columbia Brain  
Imaging Center

University of Missouri Department of Orthopaedics

University of Missouri Interdisciplinary Plant Group

University of Missouri Research Core Facilities

University of Missouri Research Core Facilities  
Cell & Immunobiology

University of Missouri Research Reactor

University of Missouri School of Health Professions

University of Missouri School of Law

University of Missouri School of Medicine

University of Missouri System

University of Missouri Technology Management  
& Industry Relations

VA Biomolecular Imaging Center

Washington University - St Louis