

# MISSOURI FOOTBALL '69

Press,  
Radio, TV Guide  
Price \$1.00



ORANGE BOWL SUPPLEMENT

# 1969 FOOTBALL SCORES

(Won 9, Lost 1)

Missouri	19	Air Force	17	55,000
Missouri	37	Illinois	6	48,740
Missouri	40	Michigan	17	64,476
Missouri	17	Nebraska	7	60,500
Missouri	31	Oklahoma State	21	51,000
Missouri	24	Colorado	31	41,886
Missouri	41	Kansas State	38	60,000
Missouri	44	Oklahoma	10	61,000
Missouri	40	Iowa State	13	21,000
Missouri	69	Kansas	21	50,500
	<b>362</b>		<b>181</b>	<b>514,102</b>

## Missouri Bowl Box Score

(Won 4, Lost 6)



*Team	Bowl	Opponent	Score
*1939	Orange	Georgia Tech	Ga. Tech 21, M.U. 7
1941	Sugar	Fordham	Fordham 2, M.U. 0
1945	Cotton	Texas	Texas 40, M.U. 27
1948	Gator	Clemson	Clemson 24, M.U. 23
1949	Gator	Maryland	Maryland 20, M.U. 7
1959	Orange	Georgia	Georgia 14, M.U. 0
1960	Orange	Navy	M.U. 21, Navy 14
1962	Bluebonnet	Georgia Tech	M.U. 14, Ga. Tech 10
1965	Sugar	Florida	M.U. 20, Florida 18
1968	Gator	Alabama	M.U. 35, Alabama 10

\*Indicates season — all bowl games except Gator and Bluebonnet were played on January 1 of ensuing year.

This brochure has been prepared as a reference for the press, radio and TV announcers covering the Tigers. For additional information — press tickets, pictures, etc. — please contact: BILL CALLAHAN, Sports Publicity Director, University of Missouri, Columbia 65201.

*Donated by  
Tom Apel BSSA 76  
to Ellis Library  
4/25/2019*

Office Phone — 449-8005, Ext 230 or 231, Area Code 314  
Home Phone — 442-5826, Area Code 314

Records research by: Mrs. Stephanie  
Nichols and Cathy Burnes

[C: 31/00/8 (A19-43)]



## Contents

ATHLETIC COMMITTEE . . . . .	2
STAFF	
Directory . . . . .	2
Wilbur Stalcup . . . . .	5
Ed Dissinger . . . . .	5
COACHES	
Scoreboard . . . . .	35
Clay Cooper . . . . .	6
Dan Devine . . . . .	3
Bob Frala . . . . .	7
Prentice Gautt . . . . .	8
Joe Johnston . . . . .	9
John Kadlec . . . . .	7
Hank Kuhlmann . . . . .	6
Al Onofrio . . . . .	6
Vic Rapp . . . . .	7
Vince Tobin . . . . .	8
Fred Wappel . . . . .	9
Charles Cowdrey . . . . .	9
CONFERENCE	
Champions . . . . .	58
Selections . . . . .	36
HISTORY	
Former Players in Pros . . . . .	56
Mizzou's Greatest Games . . . . .	38
Post War Leaders . . . . .	46
OPPONENTS	
Past Scores—'69 Foes . . . . .	28
RECORD AND STATISTICS	
Coaches Scoreboard . . . . .	37
Individual . . . . .	40
Team . . . . .	25
Tiger Headlines '69 . . . . .	34
Joe Moore Game-by-Game . . . . .	44
Individual and Team Bests . . . . .	30
1969 Records . . . . .	48
Year-By-Year Records . . . . .	51
Year-By-Year Scores . . . . .	52
SQUAD	
Depth Chart . . . . .	10
Player Sketches . . . . .	14
Future Schedules . . . . .	26
Roster . . . . .	32
The Season in Review . . . . .	11
Game-By-Game . . . . .	31
Team Standings . . . . .	31
STADIUM . . . . .	27
UNIVERSITY . . . . .	63

# Athletic Department Staff

Director of Athletics . . . . . Dan Devine  
 Associate Director of Athletics . . . . . Wilbur Stalcup  
 Assistant to the Director . . . . . Edward Dissinger  
 Administrative Assistant—Business . . . . . John Moore  
 Administrative Assistant—Public Relations . . . . . Harry Ice  
 Sports Information Director . . . . . Bill Callahan  
 Academic Advisor . . . . . Joe Johnston  
 Head Football Coach . . . . . Dan Devine  
 Asst. Head Football Coach & Asst. Athletic Director . . . . . Al Onofrio  
 No. 1 Assistant Football Coach . . . . . Clay Cooper  
 Freshman Football Coach . . . . . Bob Frala  
 Offensive Backfield Coach . . . . . Hank Kuhlmann  
 Offensive Line Coach . . . . . John Kadlec  
 Offensive Ends Coach . . . . . Vic Rapp  
 Defensive Ends Coach . . . . . Vince Tobin  
 Assistant Football Coach . . . . . Prentice Gautt

Assistant Football Coach . . . . . Charles Cowdrey  
 Head Basketball Coach . . . . . Norm Stewart  
 Assistant Basketball Coach . . . . . Roy Dewitz  
 Assistant Basketball & Baseball Coach . . . . . Dan McCleary  
 Head Baseball Coach . . . . . John Simmons  
 Head Track Coach . . . . . Tom Botts  
 Assistant Track Coach . . . . . Bob Teel  
 Wrestling Coach . . . . . Hap Whitney  
 Swimming Coach . . . . . Joe Goldfarb  
 Golf Coach . . . . . Al Chandler  
 Tennis Coach . . . . . Murray Strong  
 Asst. To Administrative Asst. . . . . Bart Mitchell  
 Trainer . . . . . Fred Wappel  
 Team Physician . . . . . Dr. James Baker  
 Athletic Dining Room Manager . . . . . Wilson Johnson  
 Grounds Foreman . . . . . Olen Thornton  
 Equipment Manager . . . . . Carl Whitesides  
 Assistant Trainer . . . . . Melly Lewis

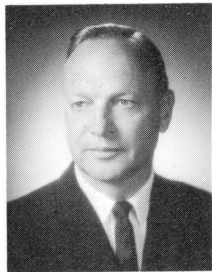
## Missouri's Athletic Committee

Dean Arthur W. Nebel,  
 Chairman  
 Dr. Henry T. Lowe  
 Dr. Bob Woods

Dean Pinkney C. Walker  
 Asst. Dean Jack W. Morgan  
 George Osborn, Joplin  
 Fred Mayer, St. Louis

## Ol' Mizzou Briefs

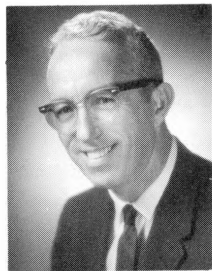
LOCATION—Columbia, Mo.      POPULATION—53,353, (1967)  
 ENROLLMENT—20,100      FOUNDED—1839  
 STADIUM—Memorial      CAPACITY—55,000  
 NICKNAME—Tigers      COLORS—Old Gold and Black



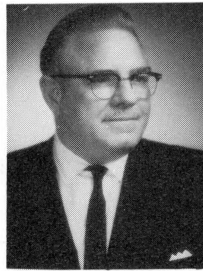
ICE



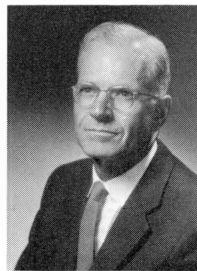
MOORE



CALLAHAN



MITCHELL



BAKER



THORNTON



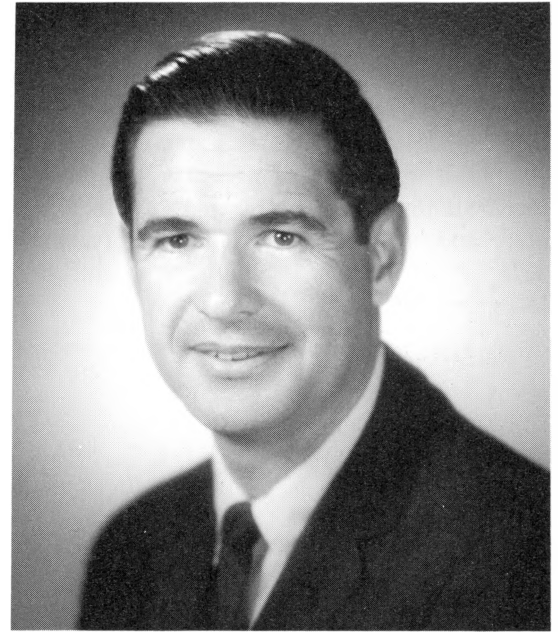
WHITESIDES



JOHNSON

## **Dan Devine**

### **Director of Athletics and Head Football Coach**



Dan Devine's sixth bowl team in 1969 boosted the Mizzou coach into second place among the nation's elite football coaches who are still active.

With a winning percentage of 75.6 for 15 years of head-coaching, Devine now trails only his former coaching sidekick during their apprenticeship at Michigan State—Nebraska's Bob Devaney. The Cornhusker skipper leads the pack with a 77.4 percentage.

Devine vaulted ahead of Johnny Vaught of Ole Miss (75.3). Frank Kush of Arizona State (74.5) and Texas' Darrel Royal (74.5) climbed into a third-place tie one-tenth of a point ahead of Alabama's Paul "Bear" Bryant.

Mizzou's black-haired Irishman now has turned out 15 football teams (three at Arizona State) without once experiencing a losing season. In Tigerland, his won-lost record in the decade of the 60's is 76.7 percent.

The Bengal headman, who will be 45 years old on Dec. 23, also doubles as Missouri's director of athletics. He assumed the position in 1967 after Don Faurot's

retirement.

His 15-year coaching scoreboard shows 115 wins, 33 losses and 8 ties. At Arizona State, Dan's teams compiled a sparkling 27-3-1 mark. Since coming to Mizzou in 1958 as Frank Broyles' successor, he has won 88, lost 30 and tied 7.

In 9 of the last 11 years, Devine's teams have ranked nationally among the 20 leading football powers. His bowl record is 4-1, with those post-season triumphs coming consecutively. Dan is the dean of Big Eight coaches—and was named District 5 Coach-of-the-Year in a poll of the American Coaches Football Association.

Formerly a college quarterback at the University of Minnesota in Duluth, he coached for two years on the high school level and five years as an assistant at Michigan State before accepting his first head-coaching assignment at Tempe in 1955. His coaching philosophy and training evolved from early exposure as an aide of Clarence "Biggie" Munn and Hugh "Duffy" Daugherty at East Lansing.

## Dan Devine (cont.)

Formerly a college quarterback at the University of Minnesota in Duluth, Dan coached for two years on the high school level and five years as an assistant at Michigan State before accepting his first head-coaching assignment at Tempe in 1955. His coaching philosophy and training evolved from early exposure as an aide of Clarence "Biggie" Munn and Hugh "Duffy" Daugherty at East Lansing.



Coach and Jo Devine

As a collegian, Dan played football, basketball and baseball, captaining the football and basketball teams. He was graduated in 1948 after his education had been interrupted by a tour of duty with the Army Air Force during World War II.

Two years of high school coaching at East Jordan, Mich., and a couple of unbeaten teams there, helped to hurry along his professional climb. He moved on to Michigan State in 1950, and subsequently became varsity backfield coach.

While in college, Devine met and married the former Joanne Brookhart, a native of Duluth. The Devines have seven children. Twins Jennifer and Mary Jo (Mrs. Andrew Carver) 21, top the list—followed by Diane (Mrs. Stephen Greenberg) 19, Danny 15, Sarah 12, Melissa 10 and Jill 8.

In coaching tenure, Devine is topped only by Faurot's 19 years in Tigerland. He is the 25th head coach in Missouri history and was born in Augusta, Wis., on Dec. 23, 1924.

### THE DEVINE RECORD

School	Year	Won	Lost	Tied	Pct.	Pts.	Opp. Pts.	Conf. Stdg.	Nat'l Rank
Arizona State	1955	8	2	1	.773	343	107	2	---
Arizona State	1956	9	1	0	.900	306	83	1	---
Arizona State	1957	10	0	0	1.000	397	66	1	12th
Missouri	1958	5	4	1	.550	164	141	2(t)	---
Missouri	1959	6	5	0	.545	125	124	3	18th
Missouri	1960	11	0	0	1.000	295	93	1	5th
Missouri	1961	7	2	1	.750	124	57	2	11th
Missouri	1962	8	1	2	.900	204	62	2	11th
Missouri	1963	7	3	0	.700	151	86	3	15th
Missouri	1964	6	3	1	.650	142	88	4	18th(t)
Missouri	1965	8	2	1	.773	221	101	2	6th
Missouri	1966	6	3	1	.650	121	116	3(t)	---
Missouri	1967	7	3	0	.700	134	76	4	---
Missouri	1968	8	3	0	.727	308	136	3	9th
Missouri	1969	9	1	0	.900	362	181	1(t)	6th
		115	33	8	.763	3397	1517		

## Wilbur "Sparky" Stalcup

Associate Director of Athletics



### COACHING CAREER

University of Missouri, 16 yrs. (1947-62)  
N.W. Missouri State, 11 yrs. (1933-42, 1946)  
Overall Record: W—347, L—235  
Missouri Record: W—195, L—179

### ADMINISTRATIVE

Asst. Director of Athletics, 7 yrs.  
State Chairman, March of Dimes, 3 yrs.

### PLAYING CAREER

Second-team basketball A.A.U. all-American at N. W. Mo. State under Coach Henry Iba . . . won football and track letters, too . . . graduated in 1932.

### HONORS, AWARDS

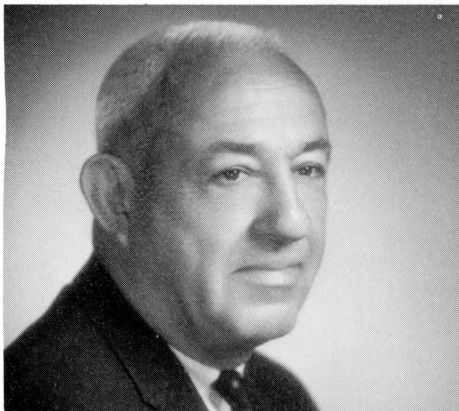
Helms Foundation Hall of Fame, 1963; Past-president National Basketball Coaches Association.

### PERSONAL DATA

59 years old, born 2/13/10 in Forbes, Mo. . . . Navy service, 3 yrs. (1943-45) . . . long-time member of Missouri Sports Network for football broadcasts . . . married to the former Isabel McDaniel . . . has one daughter, and two grand-daughters.

## Ed Dissinger

Assistant to the Director



### COACHING EXPERIENCE

Nine years as assistant on Kansas State football staff (1958-66) . . . a veteran of 17 years of high school coaching in Kansas . . . his Manhattan high teams won three league titles in football, and in basketball . . . coached at six Kansas high schools before moving up to college level.

### ADMINISTRATIVE EXPERIENCE

Starting third year as Dan Devine's administrative assistant . . . worked under H. B. "Bebe" Lee at K-State in similar capacity for one year . . . retired Army major, with service during World War II . . . joined Mizzou staff April 1, 1967.

### PERSONAL DATA

Is 57 years old, married, and the father of two children . . . was outstanding distance runner during prep and collegiate days . . . holds B.S. degree in Mathematics from Baker, and a Masters' in Education from Kansas State.

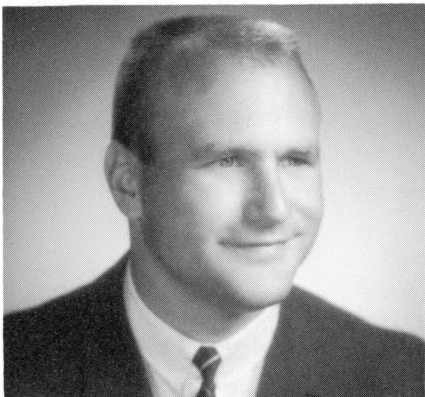
# The Coaching Staff



ONOFRIO



COOPER



KUHLMANN

**AL ONOFRIO** (Arizona State '43) Assistant Athletic Director and Assistant Head Coach.

**Coaching Experience:** Starts 12th season at Mizzou, and 21st as an assistant coach . . . assumed new administrative responsibilities this summer . . . has been involved exclusively with the defensive line in recent years—and credited with developing tough, respected units . . . 1968 Tigers were eighth nationally in total defense, and tenth in defense against scoring . . . served eight years at Arizona State U. in Tempe under Eddie Doherty, Larry Siemering and Dan Devine.

**Playing Career:** All conference halfback at Arizona State in '42.

**Personal Data:** Native of Los Angeles, 48 years old . . . joined A.S.U. Physical Education staff in 1946 . . . married to the former Joan Noble of Alliston, Ont., and the father of five boys and one girl. Oldest son, John, is a junior defensive back at Tulane, and Eddie is a freshman football players at Utah.

**CLAY COOPER** (Missouri '40) No. 1 Assistant.

**Coaching Experience:** Senior citizen on Tiger football staff in point of service, Cooper has logged 22 years at his alma mater under three skippers—Don Faurot, Frank Broyles and Dan Devine . . . joined staff in 1947 . . . secondary defensive is No. 1 responsibility . . . Tigers fifth nationally in pass defense last year . . . also coordinates recruiting . . . keen student of the game, usually mans press-box phones.

**Playing Career:** Won nine letters at Mizzou in football, basketball and track . . . played halfback on 1939 Orange Bowl squad, first league championship team coached by Faurot . . . also played on Bengals' last basketball team to win a conference title.

**Personal Data:** Native of Corydon, Ky., 51 years old . . . was Navy PT boat officer in World War II . . . married to the former Frances Shepard of Columbia, and father of eight children—five girls and three boys.

**HANK KUHLMANN** (Missouri '59) Offensive Backfield.

**Coaching Experience:** Starts seventh season as regular staff member, and third in charge of offensive backs . . . began coaching as graduate assistant in 1962, while obtaining Masters' degree in Physical Education.





KADLEC

**Playing Career:** A halfback and fullback under three different coaches at Missouri—Don Faurot (1956), Frank Broyles (1957) and Dan Devine (1958) . . . all Big Eight fullback as a junior, leading rusher and scorer 1957-58 . . . baseball catcher, too, on Tigers' N.C.A.A. runnerup team in 1958—signed pro contract with St. Louis Cardinals and spent four years in the minors.

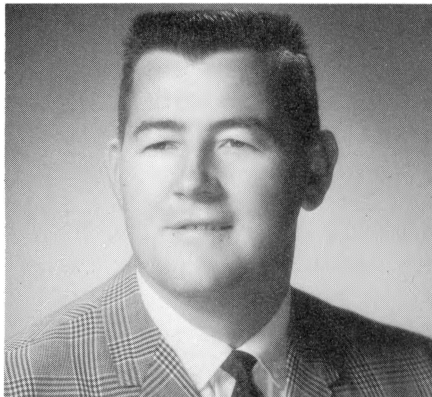
**Personal Data:** Native of Webster Groves, Mo., 32 years old . . . married to the former Donna Pickles of Affton . . . father of a baby boy.

**JOHN KADLEC** (Missouri '51) Offensive Line.

**Coaching Experience:** Sixteen years as a varsity aide—ten at Mizzou and six at Kansas State . . . joined Bengal staff in 1952 and coached through 1958 season . . . line coach at K-State from 1960-65 . . . re-located at Missouri in 1966, as Rollie Dotsch's replacement . . . knowledgeable and thorough in teaching line play.

**Playing Career:** An all-conference guard at Mizzou and a letterman for three years (1948-50) . . . played in four post-season games as a collegian—the Gater Bowl twice, the East-West and Senior Bowl games . . . was drafted by the Washington Redskins but left the team after the exhibition season to return to school.

**Personal Data:** Native of St. Louis where he prepped at South Side Catholic high . . . is 40 years old . . . married to the former Mary Jacobi of Ferguson, Mo., and the father of four children.



RAPP

**VIC RAPP** (Arkansas '56) Offensive Ends.

**Coaching Experience:** Joined Tiger staff in 1967 after two-year term as an assistant at the University of Arizona . . . previously, he had coached in Missouri high school circles . . . spent seven years at Pleasant Hill where his teams had a 49-17-2 record, and one year as an assistant at West Plains and Carthage.

**Playing Experience:** Former guard at Southwest Missouri State in Springfield, and Southern State college in Magnolia, Ark.

**Personal Data:** Obtained Masters degree in Physical Education from Arkansas in 1959 . . . is 37 years old, married, and the father of three daughters . . . native of Marionville, Mo.

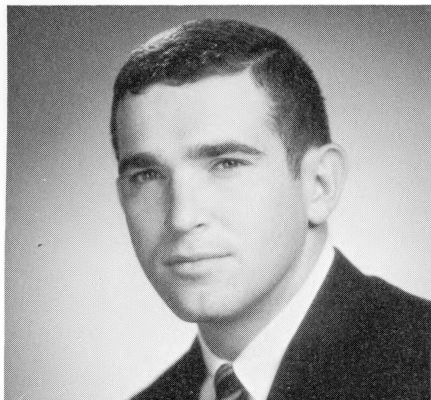


FRALA

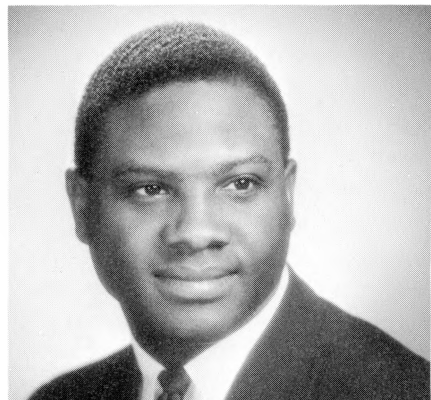
**BOB FRALA** (Illinois '54) Freshman Coach.

**Coaching Experience:** Begins fourth season on Missouri staff . . . joined college ranks after impressive seven-year tour at Belleville, Ill., high school . . . his teams compiled a 51-17-3 mark, won four league titles, and one mythical state championship in 1964 . . . coached at Ft. Eustis, Va., while in service, directing football team

## Coaching Staff (cont.)



TOBIN



GAUTT

to the East Coast Army championship in '55 . . . was freshman back-field coach at Illinois in '52 and '53, and then took an assistant's job at a Chicago suburban high school for three years.

**Playing Experience:** Squadman at University of Illinois, played quarterback, for three years in early 50's . . .

**Personal Data:** Obtained Masters degree in Physical Education in 1958 . . . named Illinois high school Coach-of-the-Year in 1964 . . . 38 years old, married, and father of three children . . . native of Centralia, Ill.

**VINCE TOBIN** (Missouri '65) Defensive Ends.

**Coaching Experience:** In his second year as a full-time varsity assistant. Previously served as a graduate assistant with the Tigers in the spring of 1965—and the spring and fall semester of 1966 while obtaining his Masters degree. Worked under Coach Cooper with the defensive secondary as a graduate assistant—but will handle the defensive ends.

**Playing Career:** Played three years for Mizzou, lettering as a safetyman in his junior and senior seasons (1963-64) . . . Tossed a scoring pass to John Roland in his first varsity game (against California at Berkeley) in 1962.

**Personal Data:** Was employed for ten months by the Neighborhood Youth Corps after graduation. Has a Physical Education degree from the University, and a Masters degree in Guidance and Counseling. Native of Burlington Junction, Mo., 26 years old, and unmarried.

**PRENTICE GAUTT** (Oklahoma '60) Chief Scout.

**Coaching Experience:** Joined Missouri staff one year ago. First coaching job.

**Playing Career:** Completed eight years of professional football, one with Cleveland, and seven with St. Louis Cardinals prior to retiring in spring. Was Cards' No. 2 ground-gainer in '67. First of his race to play at Oklahoma . . . Attended O.U. on an academic scholarship, but was awarded an athletic scholarship, after two months . . . Lettered as fullback and halfback in 1957-58-59, winning all-America honors as a senior. Also named to the Academic all-American team. Won MVP award against Syracuse in Orange Bowl.

**Personal Data:** Prior to accepting Mizzou offer, was employed by the Board of Education in Oklahoma City as a consultant in the Cultural Resources Department. Will combine coaching football with classroom work toward a doctorate degree in Guidance and Counseling. Native of Oklahoma City, Okla., 31 years old.



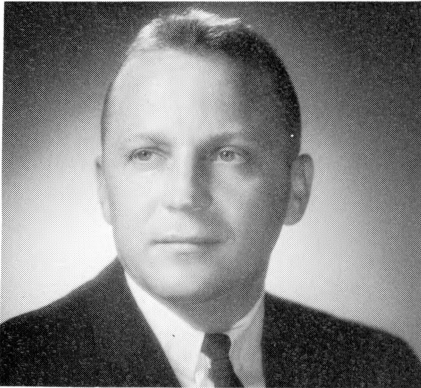
COWDREY

**CHARLES COWDREY** (N.W. Missouri State '55) Assistant Coach.

**Coaching Experience:** Newest staff member coached football at Ft. Scott (Kan.) junior college for the last three years, compiling a 22-7-2 record. His Greyhounds won the conference title this year with a 10-0 record, ranked third nationally in the final juco poll, and played in the Sterling Bowl game . . . In 1966, Ft. Scott was co-champion, and placed second in 1967 . . . Previously, he had nine years of coaching background at four Missouri schools . . .

**Playing Experience:** None.

**Personal Data:** Obtained Masters degree in Education at the University of Missouri in 1964 . . . is 35 years old, married, and the father of three children . . . native of Smithville, Mo.



WAPPEL

**FRED WAPPEL** (Illinois '52) Trainer.

**Training Career:** Starts 15th year on Missouri staff . . . came to Tigerland in 1955 as an aide to the late "Doc Ollie" DeVictor . . . assumed head trainer's role in 1958 . . . served for several years as trainer in Blue-Gray game at Montgomery . . . started learning the trade as a student trainer at the University of Illinois . . . worked briefly with a St. Louis semi-pro football team, and in physical therapy at a veterans' hospital and boys' school.

**Personal Data:** Native of St. Louis, Mo., and 39 years old . . . married to the former Helen Marie Fletcher of St. Louis, and the father of six children—four boys and two girls.



JOHNSTON

**JOE JOHNSTON** (Michigan '58, A.M. at Michigan '60, Ph.D. at Michigan '64) Counseling Psychologist for Missouri athletes.

**Training Data:** Received three degrees at Michigan, earning his doctorate in Guidance and Counseling . . . works out of UMC's Counseling Bureau, teaching in Psychology, and supervises the athletes' academic progress . . . was an instructor in Guidance and Counseling at Michigan before coming to Mizzou.

**Personal Data:** Is 34 years old, married and the father of two children.

# MISSOURI

## Two-Deep for Penn State

### OFFENSE

LE ...	93	Tom Shryock	46	Steve Kenemore
LT ...	75	Larron Jackson	73	John Burns
LG ...	62	Dan Kelley	68	Scotty Bell
C ...	65	Bob Wilson	62	Terry Moore
RG ...	67	Mickey Kephart	77	Lou Caputo
RT ...	66	Mike Carroll	70	Eric Lowder
RE ...	21	Mel Gray	80	John Henley
QB ...	18	Terry McMillan	16	Chuck Roper
TB ...	45	Joe Moore	25	Bill Mauser
SB ...	22	Jon Staggers	24	Henry Brown
FB ...	32	Ron McBride	31	Mike McKee

### DEFENSE

LE ...	89	John Brown	81	Mike Bennett
LT ...	79	Mark Kuhlman	85	Dave Frieze
LG ...	65	Adam Vital	71	Tom Stephenson
RG ...	63	Sam Adams	54	Bob Luther
RT ...	64	Steve Mizer	60	John Cowan
RE ...	84	Joe Hauptman	83	Dan Borgard
LB ...	26	Nip Weisenfels	33	Jerry Boyd
LB ...	55	Steve Lundholm	30	Sam Britts
LH ...	27	George Fountain	11	Ricci Stotler
RH ...	40	Butch Davis	47	Lorenzo Brinkley
S ...	28	Dennis Poppe	15	Rex Brinkman

**SPECIALISTS:** Punter - 46 Steve Kenemore; Kickoffs - 24 Henry Brown; FG, PAT - 24 Henry Brown, 11 Ricci Stotler; Passers - Quarterbacks

**DEEP MEN ON KICKS:** Kickoffs — (22) Staggers, (21) Gray (80) Henley; punts — (22) Staggers, (80) Henley.

**CAPTAINS:** Jon Staggers (22) and Sam Adams (63)

# The Season In Review

Missouri's football team found a passing attack in 1969, and, if nothing else, this fillip was the ticket to a 9-1 record — to a co-championship in the Big Eight conference — and to a post-season match with unbeaten Penn State in the Orange Bowl at Miami.

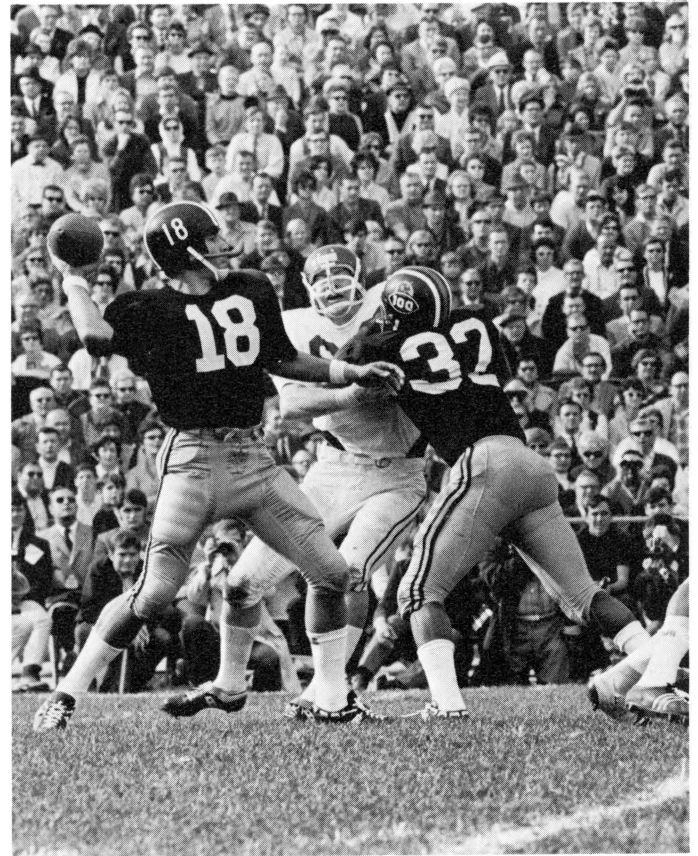
For 11 previous seasons, Coach Dan Devine's Missourians were notoriously fond of ground travel. They beat Georgia Tech in the 1962 Bluebonnet bowl, and Alabama in the 1968 Gator bowl — without completing a single forward pass.

The stereotype faded fast in '69. With quarterback Terry McMillan pitching and wide receiver Mel Gray heading a clique of good ball-hawks, school records on the books since the vintage years of Paul Christman tumbled en masse.

The Bengals finished as the highest-scoring club in Tiger history (36.2-point average). They also entered these new records into the ledger: Most total yards (4,507); most passing yards (2,048); and most touchdown passes (20).

Individually, McMillan of Coral Gables, Fla. flipped 18 of those TD passes for a Big Eight record — and overhauled four other Christman marks including most passing yards (1,963) and most total offense (2,157). Gray, the fleet junior from Santa Rosa, Calif., caught a record nine scoring passes — and his 705 yards in receptions was another all-time best.

On the ground, tailback Joe Moore, fullback Ron McBride and slotback Jon Stagers complemented the aerial arm handsomely. Moore, a 198-pound junior, churned for 1,312 yards —



No. 3 in the nation — charging for more than 100 yards in nine of his ten outings.

The nifty Stagers gave Missouri a quick-hitting threat, as well as a big-play guy on punt and kickoff returns, and pass-receptions. He broke a 99-yard kickoff runback against Kansas State.

In such an offensive splurge, there had to be quality blocking, of course. All-American Mike Carroll and all-league Larron Jackson at the tackles led the way — abetted by center Bob Wilson, guards Mickey Kephart and Dan Kelley and tight end Tom Shryock.

## *Missouri Football (cont.)*

Defensively, Ol' Mizzou was not as ruggedly proficient as the '68 team. This was expected. Only one starter, tackle Mark Kuhlman, returned in the front-six alignment — and he was not always at full speed because of ankle problems.

Yet, in a year when the ends and tackles were never at full strength because of injuries, the defense hung tough when it had to. Missouri finished second in the conference in scoring defense, and in rushing defense.

Curiously, the Orange-bowl-bound Tigers became only the third team in the school's annals to win nine games — without two of their most publicized players. Fullback Jim Harrison, 238-pound junior, and defensive tackle "Rocky" Wallace — all-Big Eight in 1968 — were disabled with pulled hamstring muscles.

Harrison played briefly in three games — but the durability and productivity of Moore at tailback — plus McBride's solid blocking offset his absence. His readiness for Penn State is questionable.

Wallace played less than one half against Nebraska, and has been approved as a hardship case for full eligibility in 1970. The quick play-spoiler was missed, but sophomores Steve Mizer and John Cowan took up the slack capably.

Ol' Mizzou almost fizzled on the launching pad in an opener with Air Force. The scrappy Cadets took a 17-16 lead with 32 seconds left — but McMillan's 56-yard desperation toss to split

end John Henley — and place-kicker Henry Brown's 30-yard field goal with 11 seconds to go rescued a 19-17 win.

Brown, incidentally, kicked four field goals that day — a Mizzou record — and wound up with 12 for the year, another record, besides leading the Tigers in scoring with 71 points. He was 35-for-39 in conversion kicks.

Missouri mauled Illinois, 37-6, in its second start — and first appearance in Busch Stadium in St. Louis. Moore pranced for his seasonal high of 185 rushing yards against the Illini.

Ann Arbor, Mich. was the next stop, and Missouri's first exposure to Tartan turf came off pleasingly. The Big Eight visitors boosted Devine's personal score-sheet over Big Ten foes to 8-1-1 with a 40-17 conquest of the Rose-bowl bound Wolverines.

The Tigers dropped a quick McMillan-to-Gray 69-yard bomb on rugged Nebraska to lay the groundwork for a 17-7 win over the eventual league co-champs in Columbia.

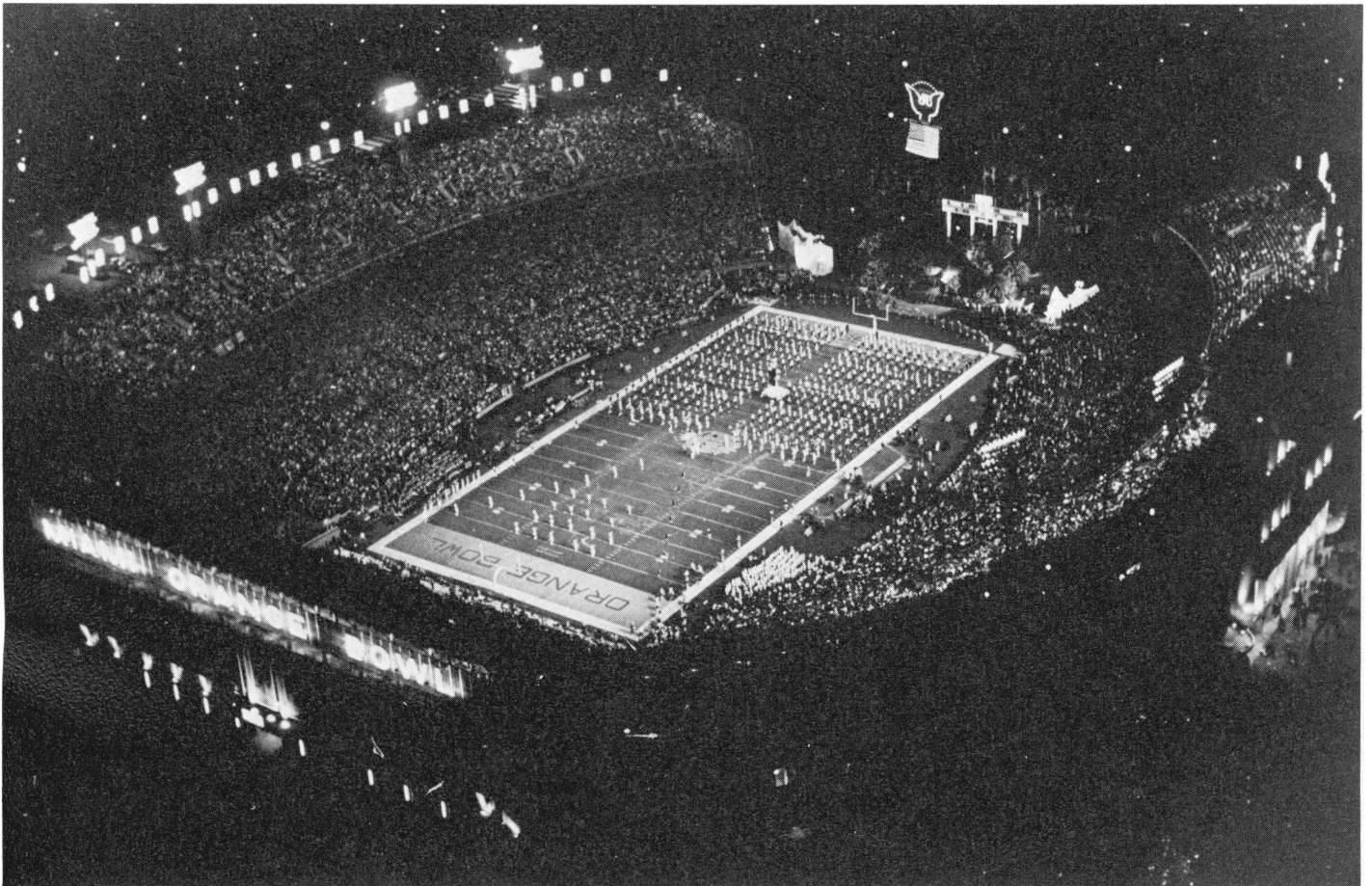
Oklahoma State yielded grudgingly, too, 31-21, also at Columbia—while game No. 5 at Boulder dislodged Missouri from the top-ten ratings. Normally not a passing team, Colorado victimized the Tigers on three long completions to win 31-24.

Missouri wrested a 41-38 thriller from K-State at home the next week, chiefly on Staggers' personal heroics. One week later, the Devines

spotted Oklahoma a 10-0 lead in Columbia — then hustled 44 straight points while holding Heisman trophy winner Steve Owens to one touchdown.

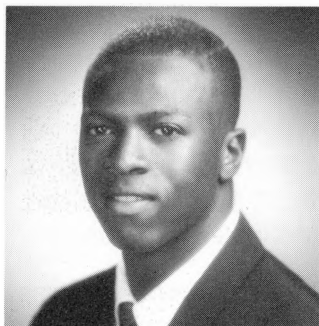
At Ames, the Tigers fell behind quickly, 7-0, but soon put this one beyond reach, 40-13 — with reserves finishing up.

McMillan fired four touchdown passes, a school record, and scored two others in the 69-21 finale at Kansas. In contrast to the tight, near-miss in the Air Force opener, Missouri shocked K.U. with 21 first-quarter points en route to 651 yards in total offense. It was the most points by any Tiger team in modern times, and the most ever yielded by Kansas to any opponent.

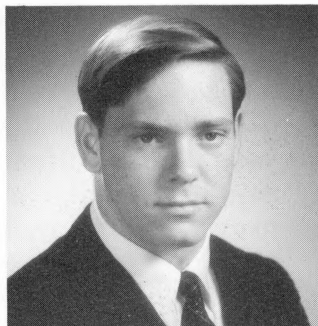


Orange Bowl Stadium

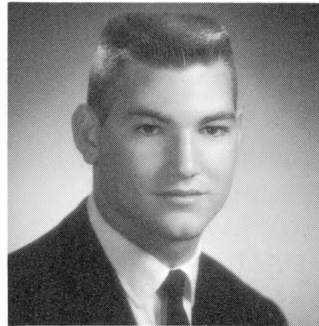
# About the Players



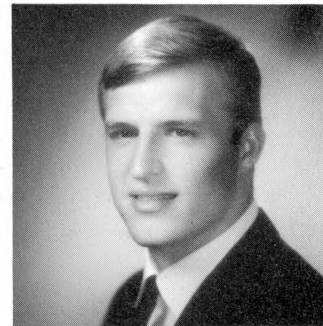
GRAY



HENLEY



KENEMORE



SHRYOCK

## THE OFFENSE

### ENDS

**GLOSSON, ED**—No. 88—5-10 . . . 163 . . . 20 . . . sophomore—tiny receiver developed into more reliable target in 1969 . . . was No. 3 split end, but “The Flea’s” speed and aggressiveness won him a spot on specialty teams . . . brother of Clyde Glosson, former outstanding sprinter at Trinity U., and has another brother playing for Texas at El Paso . . . competed one year at St. Phillips junior college in San Antonio . . . Business major . . . from Wheatley high in San Antonio.

**GRAY, MEL**—No. 21—5-9 . . . 173 . . . 21 . . . junior—Tigers’ top pass-grabber had fabulous season . . . set school records for most reception yardage—season (705), and one-game (171), most touchdown catches (9), and most average yards per catch (27.1) . . . scored 10th touchdown on 19-yard flanker reverse . . . wiry sprinter used his blazing speed and nifty footwork to give Mizzou the “bomb” threat . . . longest catch-and-run for score was 75-yard play against Colorado . . .

ty Mizzou record with three touchdowns against Kansas . . . also returns kickoffs . . . all-Big Eight end finished with 26 catches for 705 yards . . . needs 104 more to break career yardage mark . . . chosen Line-man-of-the-Week by Associated Press for performance against O.U. . . . :09.3 sprinter is Big Eight’s 100 and 220-yard champion . . . was fourth in N.C.A.A. 100, fifth in 220 . . . came to Missouri from Ft. Scott (Kan.) junior college . . . Education major . . . native of Santa Rosa, Calif. . . .

**HENLEY, JOHN**—No. 80—5-10 . . . 169 . . . 20 . . . sophomore—talented newcomer alternated with Gray superbly . . . team’s No. 2 receiver with 19 catches for 320 yards . . . had four scoring grabs . . . nimble, fast and adhesive-fingered . . . tightly-wound and tough . . . made mark early with sensational 56-yard nab of last-minute desperation pass in Air Force opener to set up winning field-goal chance . . . had four punt returns for



21.5-yard average . . . brother of Bob Henley, a reserve quarterback for Tigers in 1949-50 . . . in Business school . . . from San Bernardino, Calif.

**KENEMORE, STEVE**—No. 46—6-3 . . . 216 . . . 21 . . . senior—played reserve tight end, and handled all the punting chores . . . averaged 39.1 yards on punts, but opponents returned only 15 of 58 kicks . . . caught five passes for 69 yards, and one touchdown . . . inserted as a blocker in scoring territory . . . strapping senior is Education major, plans to coach . . . from Lee's Summit.

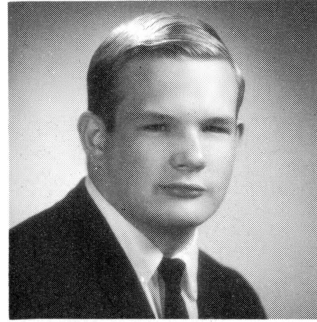
**SHRYOCK, TOM**—No. 93—6-0 . . . 195 . . . 21 . . . senior—a vastly under-rated ball-player who does everything well . . . excellent blocker, a complete athlete, long on desire . . . sure hands, heady and dedicated . . . tough tackler, played on punt and kickoff coverage teams . . . threw a key block on Stagers' 99-yard kickoff runback . . . caught 15 passes for 176 yards, and two for touchdowns . . . in Arts & Science . . . from Fredericktown.

## TACKLES

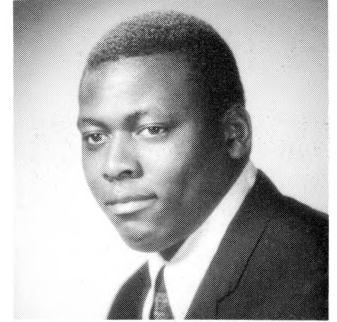
**BURNS, JOHN**—No. 73—6-4 . . . 222 . . . 20 . . . sophomore—saw part-time service as reserve, and was good backup man behind Jackson . . . improved pass-protector . . . repeat sophomore—did not use any eligibility in 1968 . . . studying Political Science, with Law career in mind . . . from Bishop Ward high in Kansas City, Kan.

**CARROLL, MIKE**—No. 66—6-3 . . . 245 . . . 21 . . . senior—powerful veteran picked as first-team all-American (at guard) by N.E.A. and The Sporting News . . . strong, dependable lineman, especially proficient on cutoff block . . . has better-than-average speed and protects passer well . . . married last summer . . . an Accounting major in Business school . . . home-town, Ste. Genevieve—oldest settlement west of the Mississippi.

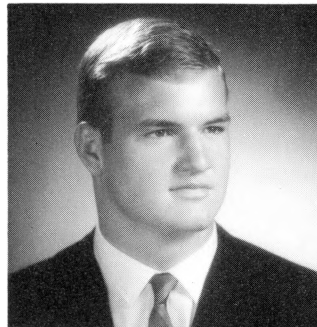
**JACKSON, LARRON**—No. 75—6-3 . . . 257 . . . 20 . . . junior—hefty holler-guy did outstanding job all year . . .



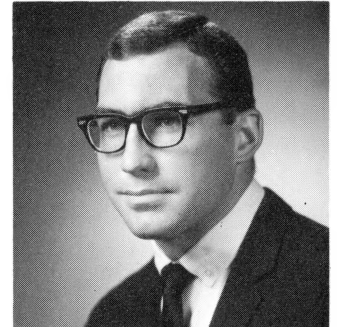
CARROLL



JACKSON



LOWDER



SLOAN

his devastating blocking won him all-Big Eight honors . . . has good balance and agility, puts out top effort constantly . . . a solid straight-ahead blocker and pass protector who takes pride in excellent performance . . . top rated as professional prospect . . . married and father of a daughter, 2 . . . an Accounting major . . . from Soldan high in St. Louis.

**LOWDER, ERIC**—No. 70—6-4 . . . 218 . . . 21 . . . junior—a durable backup lineman and two-year letterman . . . likes to hit . . . physically strong and fearless . . . can play either tackle . . . outstanding cadet officer in advanced Army ROTC program . . . in Education . . . from Kirkwood.

## About the Players (cont.)

**SLOAN, RON**—No. 78—6-2 . . . 205 . . . 21 . . . senior—versatile reserve plugged gaps at tackle, center and guard during current season . . . originally a non-scholarship volunteer . . . intelligent student of the game . . . makes top grades in classroom . . . in Business school . . . attended Immaculata high in Leavenworth, Kan. . . family not resides in Platte City.

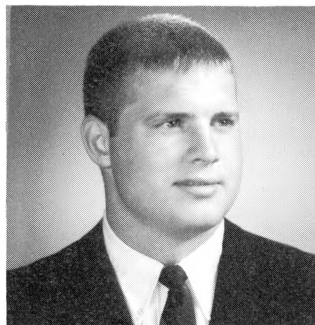
### GUARDS

**BELL, SCOTTY**—No. 68—6-1 . . . 229 . . . 20 . . . sophomore—promising rookie had good break-in year with No. 2 unit . . . adjusted fast to new position after playing tackle for freshmen . . . delivered several important blocks on key gainers, including Staggers' 99-yard kickoff return . . . fine competitive attitude . . . weight-watching will insure more agility . . . Education major . . . from Van Horn high in Independence.

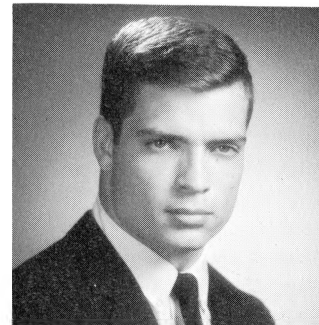
**CAPUTO, LOU**—No. 77—6-4 . . . 215 . . . 20 . . . sophomore—moved to guard after Crnko's loss . . . hampered early by rib injury . . . rangy newcomer was originally an end . . . learned interior-line play last year as a holdout sophomore . . . saw limited action as reserve . . . in Arts & Science, with Russian language major . . . from University high in St. Louis.

**KELLEY, DAN**—No. 62—6-0 . . . 208 . . . 21 . . . junior—former prep fullback was first-teamer all the way . . . has matured as a blocker and owns the speed and savvy to be effective . . . did not compete in '67 . . . Physical Education major, with a minor in Biology . . . from Southwest high in St. Louis.

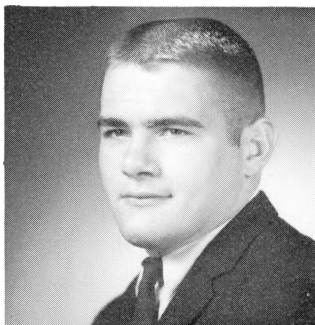
**KEPHART, MICKEY**—No. 67—6-0 . . . 229 . . . 20 . . . sophomore—promoted to regular at mid-season as Crnko's replacement . . . strong, active newcomer did exceptional job . . . consistently graded high in all phases of line play . . . fine pass protector . . . eager and hard-trying, a tireless worker . . . with normal



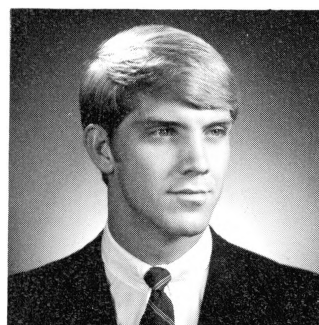
BELL



D. KELLEY



KEPHART

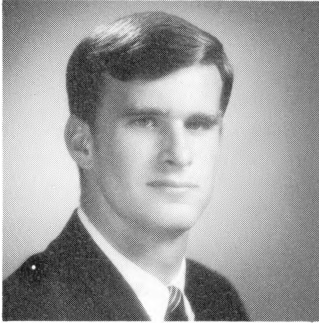


T. MOORE

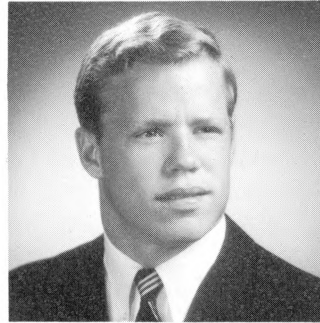
maturity, should rate high in all-conference guard picture next year . . . in Physical Education, with a Mathematics minor . . . attended high school in North Kansas City . . . present home—Hazelwood.

### CENTERS

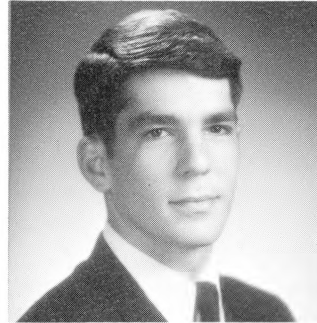
**MOORE, TERRY**—No. 52—6-5 . . . 205 . . . 21 . . . sophomore—finished up as No. 2 center . . . saw extended duty in Kansas finale when Wilson injured knee . . . a late-season comer . . . formerly an end . . . bypassed 1968 competition in conversion to new position . . . starred as prep basketballer . . . Economics major . . . from Granite City, Ill.



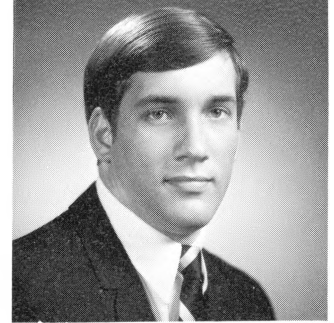
WILSON



FARMER



McMILLAN



ROPER

**WILSON, BOB**—No. 53—6-1 . . . 198 . . . 22 . . . junior—overlooked by press, but much esteemed by Bengal coaching staff for his blocking skills . . . quick and maneuverable, often the first tackler on punts . . . Vietnam veteran made rapid strides last season, topped by strong showing in Gator bowl win over Alabama . . . injured knee early in Kansas windup game, but should be fully mobile at Miami . . . served with Marines in Vietnam, suffered shrapnel wounds . . . Education major . . . from Jefferson City.

## QUARTERBACKS

**FARMER, MIKE**—No. 14—6-2 . . . 183 . . . 19 . . . sophomore—saw limited service but quarterbacked last-quarter drive superbly against Kansas . . . took team 89 yards without a hitch, and scored from one yard on a keeper after a masterful fake into line . . . rangy blond was slowed last year by slow recovery from knee surgery, and did not see any action . . . owns good arm, is poised under fire . . . also a punter . . . a top amateur golfer . . . pre-Law student . . . from Jefferson City.

**McMILLAN, TERRY**—No. 18—6-2 . . . 187 . . . 21 . . . senior—Tigers' take-charge leader activated the best passing and total offense attack in Mizzou's history . . . slender Floridian, who failed to complete a single

pass in 35-10 Gator bowl conquest of Alabama, tossed 18 scoring passes for a Big Eight one-season record—10 of them in the last three games . . . completed 105 of 233 passes for 1,963 yards—and had 13 intercepted . . . wiped out virtually all of Paul Christman's 30-yard-old Mizzou records . . . tossed 4 TD passes, and ran for 2 others in final 69-21 rout of arch-rival Kansas . . . was twice picked as the conference's Back-of-the-Week . . . scored seven touchdowns . . . netted 194 rushing yards to finish tenth nationally in total offense . . . a stronger option-running threat last year, but never fully regained top mobility after spraining big toe early in second game with Illinois . . . best single-game passing yardage was 317 against Iowa State . . . came to Mizzou after two years at Missouri Southern junior college (now a four-year college) . . . played prep football at Coral Gables, Fla., but never won a starting job . . . Journalism major, hopeful of a career in Public Relations.

**ROPER, CHUCK**—No. 16—6-1 . . . 177 . . . 19 . . . sophomore—talented rookie had very little game exposure as a sophomore . . . impressed in pre-season scrimmages . . . throws with a quick release, can unload the "home-run" pass accurately . . . slender newcomer has deceptive running style, and averaged 37½ yards as a freshman punter . . . has played in only one losing football game during his high school and collegiate career (Nebraska freshman loss) . . . a former prep

## About the Players (cont.)

pole-vaulter . . . in Arts & Science . . . born in Denver, attended Brentwood high.

### TAILBACKS

**HARRISON, JAMES**—No. 36—6-4 . . . 238 . . . 20 . . . sophomore—dogged all year by a pulled hamstring muscle—a carryover ailment from spring workouts . . . played in only three games—Michigan, Oklahoma State and Colorado—as a reserve, but never got back in playing shape thereafter . . . carried only 20 times for 84 yards . . . a fast-hitting inside threat, but readiness for Orange bowl game is questionable . . . scored eight touchdowns as sophomore . . . Education major . . . from San Antonio, Tex.

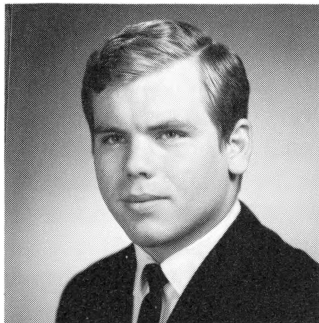
**MAUSER, BILL**—No. 25—6-1 . . . 200 . . . 19 . . . sophomore—hard-hitting rookie posted a 4.7-yard rushing average, second best to Moore . . . crowd-pleasing runner because of second effort . . . a dedicated, all-out football player . . . Physical Education major . . . from Belleville, Ill.

**MOORE, JOE** — No. 45 — 6-1 . . . 198 . . . 20 . . . junior—nation's No. 3 rusher netted 1,312 yards in ten games—for a 5-yd. average-per-carry . . . strong, second-effort runner—with getaway power once he finds

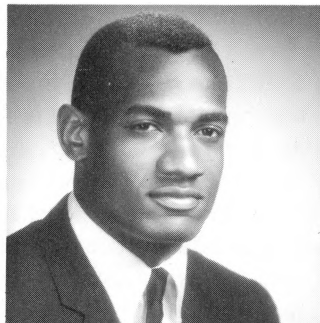
daylight in the secondary . . . broke Mizzou's one-season rushing record of 1,098 yards . . . had better-than-100-yard rushing performances in nine of ten games . . . top effort was 185 against Illinois—lowest production 68 against Colorado . . . scored five times—longest scoring jaunt, 62 against Michigan . . . all-Big Eight back (Omaha World Herald team) . . . played guard for first three years in high school, switching to backfield as a senior . . . tried out first as freshman linebacker at Mizzou . . . diligent worker on the practice field . . . married . . . in Education . . . from Beaumont high in St. Louis.

### SLOTBACKS

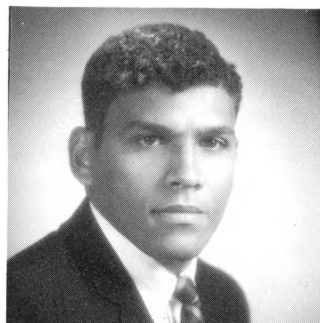
**BROWN, HENRY**—No. 24—6-2 . . . 203 . . . 21 . . . senior—one of the team's most valuable offensive threats . . . kicked winning field goal in Air Force opener with 11 second left . . . kicked important 48-yard field goal against Nebraska, after Huskers rallied to within seven . . . tied for fourth nationally among kick-scoring leaders with 71 points . . . made 35-of-39 PATs, and 12-of-20 field-goals . . . his four field-goals against Air Force, and 12 for year were new school records . . . consistently reduced foes' kickoff runbacks by booting deep into end zone . . . outstanding receiver, too—with 7 catches for 121 yards . . . made two spectacular one-handed grabs against Kansas State . . . attended Crowder (Mo.) junior college for one year before enrolling at



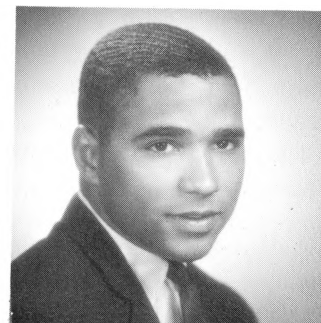
MAUSER



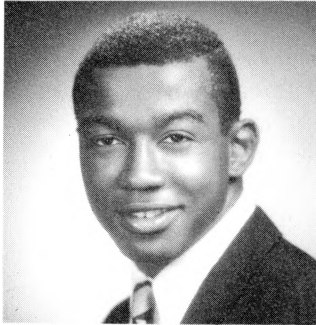
J. MOORE



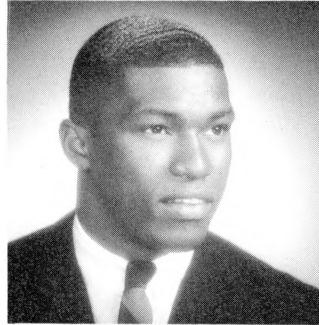
H. BROWN



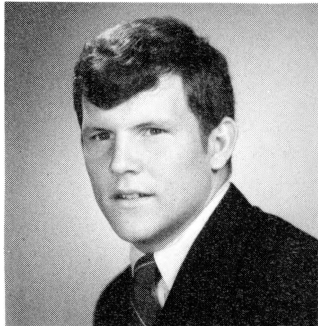
STAGGERS



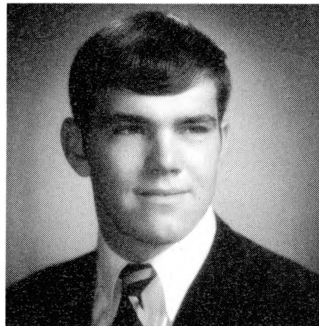
WALLS



McBRIDE



McKEE



BENNETT

Missouri . . . will be facing many of his former Pennsylvania prep rivals in Tiger-Penn State match-up . . . majoring in Parks and Recreation management . . . from Middletown, Pa.

**STAGGERS, JON**—No. 22—5-10 . . . 185 . . . 21 . . . senior—Tigers' "Mr. Versatile" led team in kickoff and punt returns, was third in scoring (42 points), third in pass receptions, and fourth in rushing . . . big-play back ran 99 yards on kickoff against K-State—caught key third-down passes in Oklahoma game—scored three times and narrowly missed No. 4 when he stepped on out-of-bounds line . . . named Back-of-the-Week in Big Eight after sparking 41-38 win over K-State . . . a shifty, exciting ball-carrier . . . caught 14 passes for 292 yards and

three touchdowns . . . had tremendous windup season despite fracturing leg midway through 1969 spring drills . . . team co-captain . . . cousin of Arthur Ashe, U.S. amateur singles tennis champion . . . attended Helias high in Jefferson City where his father is basketball coach, but grew up in Richmond, Va. . . in Arts & Science.

**WALLS, TYRONE**—No. 48—6-3 . . . 208 . . . 21 . . . junior—solidly-built runner trained at both halfback positions in spring, but was used chiefly at slotback . . . durable recruit from Ft. Scott (Kan.) junior college is a strong blocker, and a jarring tackler on specialty teams . . . had a 44-yard touchdown catch against Iowa State . . . Education major, wants to prepare for a career in Social work . . . from Antioch, Ill., a Chicago suburb.

### FULLBACKS

**McBRIDE, RON**—No. 32—6-0 . . . 202 . . . 21 . . . senior—Mizzou's No. 3 rusher handled the unsung blocking chores to perfection . . . ran for 3.8-yard average, scored five times . . . caught 11 passes for 150 yards . . . ruggedly-stacked fullback is a two-year regular . . . has good speed and balance . . . Education major . . . from Fulton.

**McKEE, MIKE**—No. 31—6-0 . . . 203 . . . 19 . . . sophomore—a driving runner, but more talented as a blocker . . . had a 3½-yard average on 15 carries . . . did top-flight job in late drive against K.U. . . . a tough, all-business player . . . pre-Med student . . . from Cham-inade high in St. Louis.

## THE DEFENSE

### ENDS

**BENNETT, MIKE**—No. 81—6-3 . . . 207 . . . 20 . . . junior—opened season as regular, but was in and out of

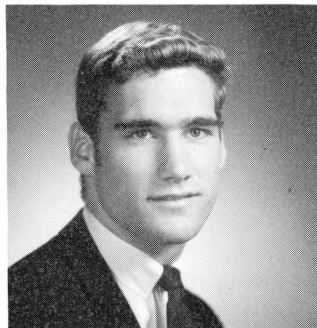
## About the Players (cont.)

lineup with a sprained arch . . . blocked punt against Michigan . . . very aggressive, puts immediate pressure on passer . . . reported as a sophomore without scholarship help, but was tendered No. 1 grant after 10 days of pre-season work . . . Chemical Engineering major . . . from Breckenridge.

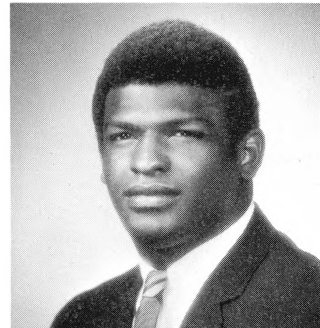
**BORGARD, DAN**—No. 83—6-2 . . . 190 . . . 20 . . . sophomore—figured in four key defensive plays—highlighted by his recovery of an Oklahoma fumble on a kickoff in the end-zone for a Mizzou touchdown . . . two other fumble recoveries—against Nebraska and Oklahoma State—led to scores . . . whacked Jim Betts, Michigan quarterback, causing a fumble recovered in mid-air by Tiger John Brown—resulting in a Missouri touchdown . . . played linebacker for freshmen but was switched to end last spring . . . could use more heft, but is a tough, eager competitor . . . pre-med student . . . from Bishop duBourg high in St. Louis.

**BROWN, JOHN**—No. 89—6-1 . . . 221 . . . 19 . . . sophomore—ruggedly-built newcomer was trained as a tight end, but moved to defense as season got under way . . . ably spelled injured veteran Joe Hauptman in early season, and logged considerable playing time . . . picked off mid-air fumble against Michigan to set up Tiger touchdown . . . butted Jerry Tagge, Nebraska quarterback, causing fumble and pounced on loose ball on Husker 16, Tigers scoring three plays later . . . a reckless, hard-hitting defender . . . formerly a fullback in high school and at Ft. Scott (Kan.) junior college, where he scored 11 touchdowns, averaging 7½ yards a carry . . . Education major . . . from Poplar Bluff.

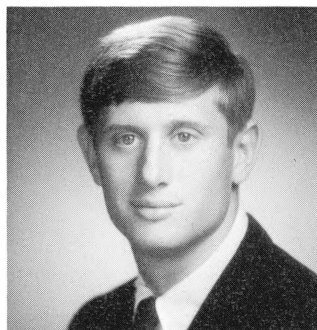
**HAUPTMAN, JOE**—No. 84—6-1 . . . 204 . . . 22 . . . senior—regular most of the way . . . out with an injury for two games . . . tough, consistent performer . . . contains the running game well . . . can play either side . . . had best game against Oklahoma . . . married . . . Education major . . . from Granite City, Ill.



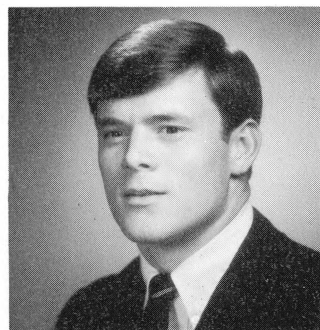
BORGARD



J. BROWN



HAUPTMAN



COWAN

### TACKLES

**COWAN, JOHN**—No. 60—6-1 . . . 203 . . . 20 . . . sophomore—started year with No. 1 unit for ailing Rocky Wallace with highly creditable success . . . sprained ankle in third game, and was idled for the next four weeks . . . a strong, quick lineman who reacts and pursues well . . . somewhat light for a major college tackle . . . aiming for career in Recreation field . . . from Glendale high in Springfield.

**FRIEZE, DAVE**—No. 85—6-4 . . . 213 . . . 19 . . . sophomore—converted from end to beef up injury-hit tackle corps . . . strained knee midway through season and was lost for rest of regular season . . . should be ready for bowl game . . . quick, aggressive newcomer with

lots of promise . . . shotputter in track . . . in Mechanical Engineering . . . from Oak Grove.

**KUHLMAN, MARK**—No. 79—6-3 . . . 218 . . . 21 . . . senior—veteran lineman was only seasoned returnee in six-man defensive front . . . aggressive and spirited, always around the action . . . was slowed by minor ankle sprains in several games . . . had finest games against Oklahoma and Kansas . . . dumped Jayhawk quarterback five times for losses, and was acclaimed as MU's top lineman . . . all-conference selection . . . unimpressive on practice field, but a highly-competitive player on game-day . . . Physical Education major . . . plans to coach . . . from Normandy high in St. Louis.

**MIZER, STEVE**—No. 64—6-0 . . . 203 . . . 20 . . . sophomore—a versatile, valuable replacement in the Tigers' graduation-riddled defensive front . . . trained at guard, but moved in as starting tackle after Cowan's injury, and Wallace's re-injury, to fortify depleted strength . . . not big by normal tackle standards, but strong and durable . . . was held out of competition last year . . . in Business school, interested in Industrial Management . . . from Northeast high in Kansas City.

## GUARDS

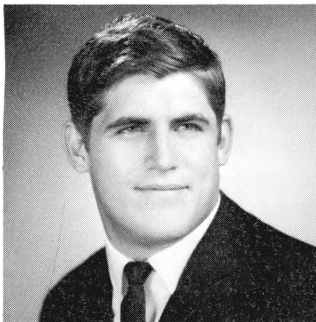
**ADAMS, SAM**—No. 63—6-0 . . . 203 . . . 21 . . . senior—a smart, hard-to-fool spoiler . . . lettered as offensive

guard as sophomore, and on defense the last two seasons . . . not flashy, but always does a competent job . . . blocked punt against Kansas, and recovered it to set up a touchdown . . . his father, Woody Adams, was starting tackle for T.C.U. in 1942 Orange Bowl game won by Georgia, 40-26 . . . a Tiger co-captain . . . pre-Vet student . . . from Midland, Tex.

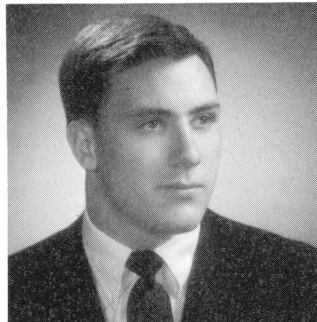
**LUTHER, BOB**—No. 54—6-0 . . . 208 . . . 20 . . . sophomore—was injured in spring, but claimed a second-team berth . . . saw action in several games . . . had best day against Michigan after both starting guards were felled by injuries . . . in Education, plans to coach . . . from Kirkwood.

**STEPHENSON, TOM**—No. 71—6-0 . . . 191 . . . 20 . . . sophomore—played on No. 2 unit, though set back early with shoulder injury . . . smallest of guards but scrappy and hard-nosed . . . quick-reacting, makes the line-backing adjustments smoothly . . . pre-Law student . . . from Rockhurst high in Kansas City.

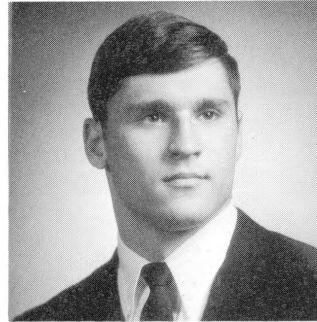
**VITAL, ADAM**—No. 65—6-0 . . . 203 . . . 20 . . . junior—moved up to starting guard this year . . . handled the assignment capably . . . fast, agile and knows how to shed the blocker . . . was standout against K-State and Oklahoma . . . married . . . a walk-on candidate, earned a scholarship after 1968 spring drills . . . Marketing major . . . from Yates high in Houston, Tex.



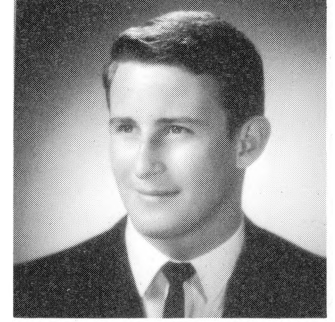
FRIEZE



KUHLMAN



MIZER



ADAMS

**LINEBACKERS**

**BOYD, JERRY**—No. 33—No. 33—6-2 . . . 203 . . . 21 senior—had 47-yard interception return against Illinois for touchdown, and picked off a late K-State pass to insure victory . . . reserve backerup, inserted on passing downs . . . English major . . . attended high school in Butler.

**BRITTS, SAM**—No. 30—5-11 . . . 201 . . . 20 . . . sophomore—had good rookie season as second-unit backerup . . . rated most-complete football player on freshman squad a year ago . . . quick, reads well, withstands blocking pressure, and has good balance . . . supports rushing defense decisively . . . in Agriculture . . . from West Alton.

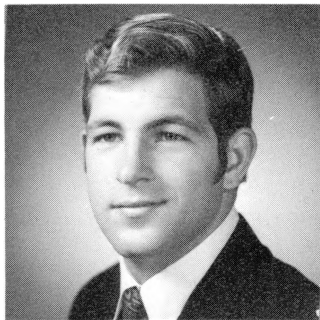
**LUNDHOLM, STEVE**—No. 55—6-0 . . . 191 . . . 22 . . . senior—played to maximum capacity all year . . . led tacklers in secondary . . . calls defensive signals . . . has excellent range, and fine block protection . . . a reliable tackler, long on desire . . . outstanding Tiger defender in several 1969 games . . . cut down two defenders with his block on Poppe's interception runback for TD against Alabama in Gator bowl . . . married . . . Physical Education major . . . former all-state fullback at North high in Des Moines.

**STOECKEL, RON**—No. 35—6-0 . . . 187 . . . 21 - - - senior—second-team player was a specialty man, for passing situations and kickoff return defense . . . a hard-hitting tackler, and conscientious worker on the field . . . married . . . in Mechanical Engineering curriculum . . . from Belleville, Ill.

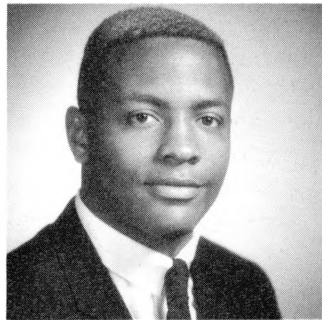
**WEISENFELS, NIP**—No. 26—5-11 . . . 204 . . . 20 . . . junior—fireplug backerup was regular as sophomore, but rounded corner this season as a mature, confident defender . . . compactly-built, a smashing tackler, with good mobility . . . dumped Jack Mildren, OU quarterback, at least twice for key losses and was picked as Sports Illustrated's Lineman-of-the-Week . . . heady on the field and in the classroom, logging top grades in Chemical Engineering . . . from Webster Groves.

**HALFBACKS**

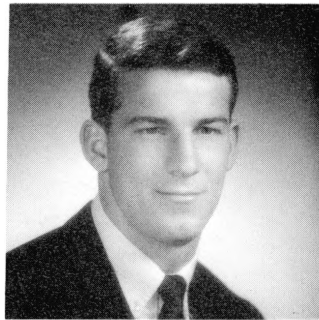
**BRINKLEY, LORENZO**—No. 47—6-0 . . . 175 . . . 20 . . . sophomore—shifted to defense late last spring . . . showed promise in several games, notably against Kansas State—covering speedster Mack Herron . . .



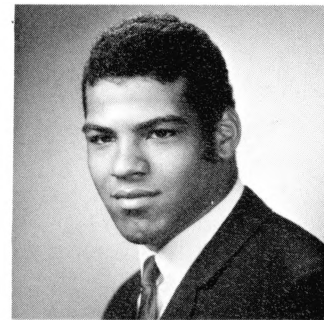
STEPHENSON



VITAL

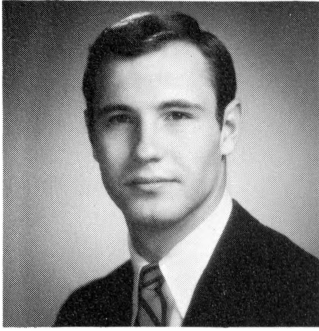


BOYD

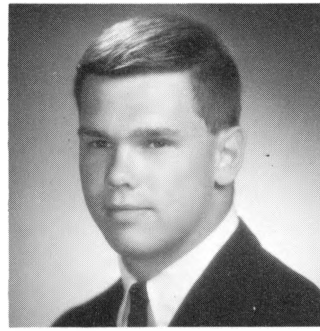


BRITTS

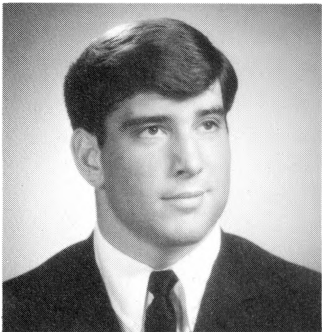




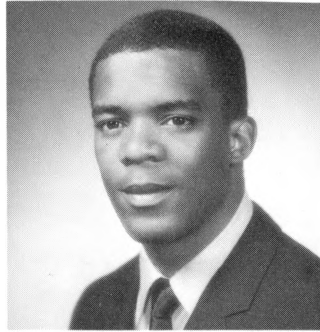
STOECKEL



LUNDHOLM



WEISENFELS



BRINKLEY

needs more concentration and consistency, though, to realize his potential . . . fast, active—was all-state prep ball-carrier as a senior . . . lost most of thumb in a 1968 summer job accident . . . in Arts & Science . . . from Beaumont high in St. Louis.

**DAVIS, JOHN (BUTCH)**—No. 40—5-11 . . . 181 . . . 21 . . . senior—three-year regular had best game against Iowa State, covering Otto Stowe . . . named to New York Daily News all-American team . . . a jarring tackler who supports running defense well . . . broke in as a sophomore with 53-yard pass interception runback for touchdown against S.M.U. . . . formerly an all-state tailback . . . married . . . studying Recreation and Park administration . . . from Chillicothe.

**FOUNTAIN, GEORGE**—No. 27—5-9 . . . 177 . . . 19 . . . junior—became a regular in mid-season of 1968 when Poppe fractured an arm . . . alert, aggressive and hard-tackling . . . did not play freshman football . . . came to Mizzou on an academic grant, and later was put on athletic scholarship . . . had two interceptions during year . . . broke up important end-zone pass against Alabama in Gator bowl . . . Marketing major . . . from Yates high in Houston, Tex.

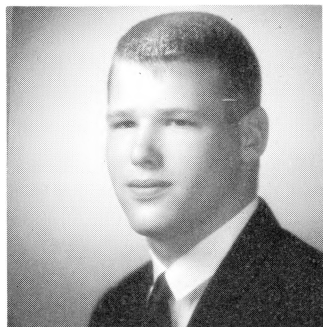
**STOTLER, RICCI**—No. 11—6-1 . . . 188 . . . 19 . . . sophomore—was most in evidence as Tigers' No. 2 place-kicker, booting 4-of-6 PATs and one 45-yard field goal . . . defensive role was light . . . in Business school . . . from Bethalto, Ill.

## SAFETIES

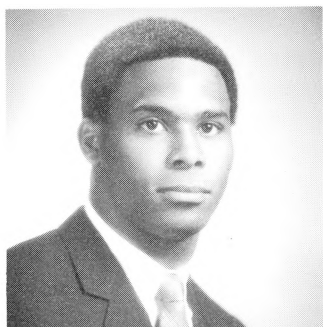
**BRINKMAN, REX**—No. 15—5-11 . . . 158 . . . 20 . . . junior—pony-sized back had brief exposure this season . . . willing and tough for size . . . son of Loyd Brinkman, former all-conference halfback at Mizzou who competed in Cotton and Gator bowls . . . pre-Dentistry student . . . from Kirkwood.

**POPPE, DENNIS**—No. 28—6-3 . . . 208 . . . 20 . . . senior—termed by coaches an "over-achiever" in his final season . . . rangy blond had six interceptions for 34 yards . . . made several key tackles including an important third-down stop of Heisman trophy winner Steve Owens early in Oklahoma game . . . has fractured both arms during varsity career at Missouri . . . had 47-yard scoring runback of interception against Alabama in Gator bowl . . . formerly a prep quarterback . . . studying Political Science, hopeful of continuing into Law school . . . married . . . from Anchor, Ill.

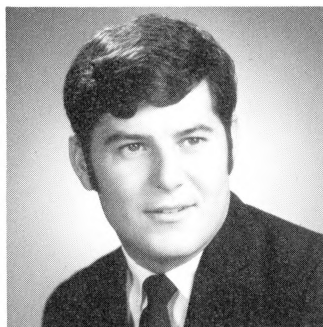
## *About the Players (cont.)*



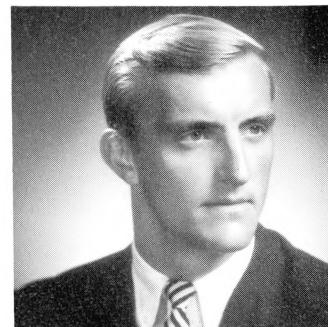
DAVIS



FOUNTAIN



STOTLER



POPPE



# MISSOURI'S 1969 STATISTICS

## (FINAL—10 Games)

MISSOURI		OPPONENTS	
210	FIRST DOWNS		149
129	rushing	84	
75	passing	58	
6	penalties	7	
4517	TOTAL OFFENSE		3158
859	plays	760	
5.3	avg.	4.1	
2463	RUSHING YARDS		1200
602	no.	461	
4.7	avg.	2.6	
2044	PASSING YARDS		1953
257	no	299	
113	comp	123	
7.9	avg/pass	6.2	
18.1	avg/comp	15.8	
17	FUMBLES LOST		17
455	YARDS PANALIZED		267
39.1	PUNTING AVERAGE		37.6

SCORING	TDPAT		PAT	FG	S	TP
	(1)	(2)				
H. Brown	0	35-39	0	12-20	0	71
Gray	10	0	0	0	0	60
Staggers	7	0	0	0	0	42
McMillan	7	0	0-1	0	0	42
McBride	5	0	1-1	0	0	32
J. Moore	5	0	0	0	0	30
Henley	4	0	0	0	0	24
Shryock	2	0	0	0	0	12
Stotler	0	4-6	0	1-1	0	7
Borgard	1	0	0	0	0	6
Boyd	1	0	0	0	0	6
Farmer	1	0	0	0	0	6
Harrison	1	0	0	0	0	6
Kenemore	1	0	0	0	0	6
McKee	1	0	0	0	0	6
Walls	1	0	0	0	0	6
M.U.	47	39-45	1-2	13-21	0	362
OPP.	25	16-18	0-7	5-8	0	181

M.U. FG DISTANCES: 42, 29, 37, 30, 45#,  
26, 24, 48, 28, 48, 21, 37, 25

PUNT RETURNS	NO	YDS	AVG	LR
Staggers	38	321	8.4	40
Henley	4	86	21.5	33
Fountain	2	65	32.5	58
Adams	1	25	25.0	25
Bennett	1	22	22.0	22
Davis	1	4	4.0	4
M.U.	47	523	11.1	58
OPP.	15	159	10.7	48

PUNTING	NO	YDS	AVG	LR
Kenemore	58	2270	39.1	62
M.U.	58	2270	39.1	62
OPP.	92	3460	37.6	62

RUSHING	NO	G	L	NET	AVG	LR
J. Moore	260	1334	22	1312	5.0	62*
McBride	83	325	9	316	3.8	29
Staggers	76	296	23	273	3.6	18*
McMillan	87	323	129	194	2.2	43
Mauser	28	128	1	127	4.7	12
Harrison	20	84	0	84	4.2	8
Walls	20	80	21	59	2.9	16
McKee	15	53	0	53	3.5	7
Roper	6	2	13	-11	0.0	2
Farmer	5	38	0	38	7.6	20
Gray	2	19	1	18	9.0	19*
M.U.	602	2682	219	2463	4.7	62*
OPP.	461	1687	487	1200	2.6	50

PASSING	ATT	COMP	INT	YDS	TD	LP
McMillan	233	105	13	1963	18	75*
Roper	14	5	2	47	1	15
Farmer	7	2	1	30	0	18
Staggers	3	1	0	4	1	4*
M.U.	257	113	16	2044	20	75*
OPP.	299	123	15	1953	10	79*

RECEIVING	NO	YDS	AVG	TD	LP
Gray	26	705	27.1	9	75*
Henley	19	320	16.2	4	56
Staggers	14	292	20.7	3	45
Shryock	15	176	11.8	2	21
McBride	11	150	14.5	0	35
H. Brown	7	121	17.3	0	32
J. Moore	7	77	11.0	0	38
Kenemore	5	69	13.8	1	18
McKee	3	33	11.0	0	21
Walls	2	58	29.0	1	44*
Glosson	2	29	14.5	0	15
Mauser	2	14	7.0	0	18
M.U.	113	2044	18.1	20	75*
OPP.	123	1953	15.8	10	79*

INTERCEPTIONS	NO	YDS	TD	LR
Poppe	6	34	0	33
Davis	3	0	0	0
Boyd	2	57	1	47*
Fountain	2	2	0	2
Lundholm	1	0	0	0
Weisenfels	1	0	0	0
M.U.	15	93	1	47*
OPP.	16	175	2	41

K.O. RETURNS	NO	YDS	AVG	LR
Staggers	17	505	29.9	99*
Gray	4	96	24.0	38
Henley	2	58	29.0	33
McKee	2	16	8.0	10
Kenemore	2	7	3.5	5
McBride	1	22	22.0	22
Mauser	1	9	9.0	9
M.U.	29	713	24.5	99*
OPP.	43	621	14.4	44

COMPOSITE QUARTER SCORE					
M.U.	66	140	87	69	— 362
OPP.	26	53	49	53	— 181

#-Indicates FG by Ricci Stotler; All others by Henry Brown

\*-Indicates TD scored on play

# Future Tiger Schedules

## 1970

SEPT.	19	MINNESOTA at COLUMBIA
SEPT.	26	AIR FORCE at COLUMBIA
Oct.	3	Oklahoma State at Stillwater
Oct.	10	Nebraska at Lincoln
Oct.	17	Notre Dame at St. Louis
OCT.	24	COLORADO at COLUMBIA
Oct.	31	Kansas State at Manhattan
Nov.	7	Oklahoma at Norman
NOV.	14	IOWA STATE at COLUMBIA
NOV.	21	KANSAS at COLUMBIA

## 1971

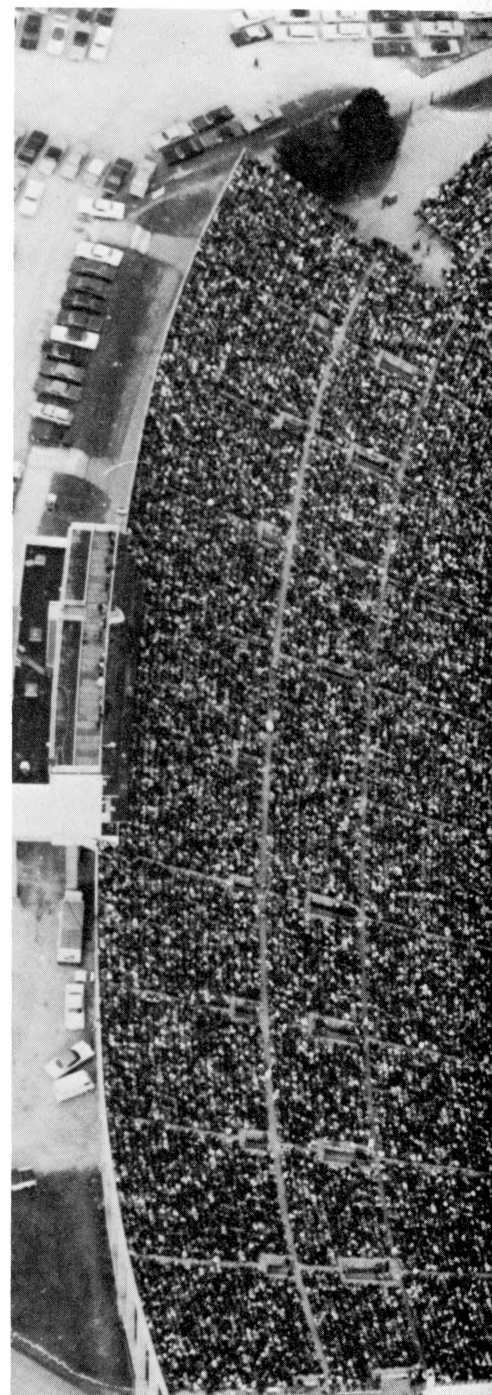
Sept.	18	Air Force at Colorado Springs
SEPT.	25	SMU at COLUMBIA
Oct.	2	Army at West Point
OCT.	9	NEBRASKA at COLUMBIA
OCT.	16	OKLAHOMA STATE at COLUMBIA
Oct.	23	Colorado at Boulder
OCT.	30	KANSAS STATE at COLUMBIA
NOV.	6	OKLAHOMA at COLUMBIA
Nov.	13	Iowa State at Ames
Nov.	20	Kansas at Lawrence

## 1972

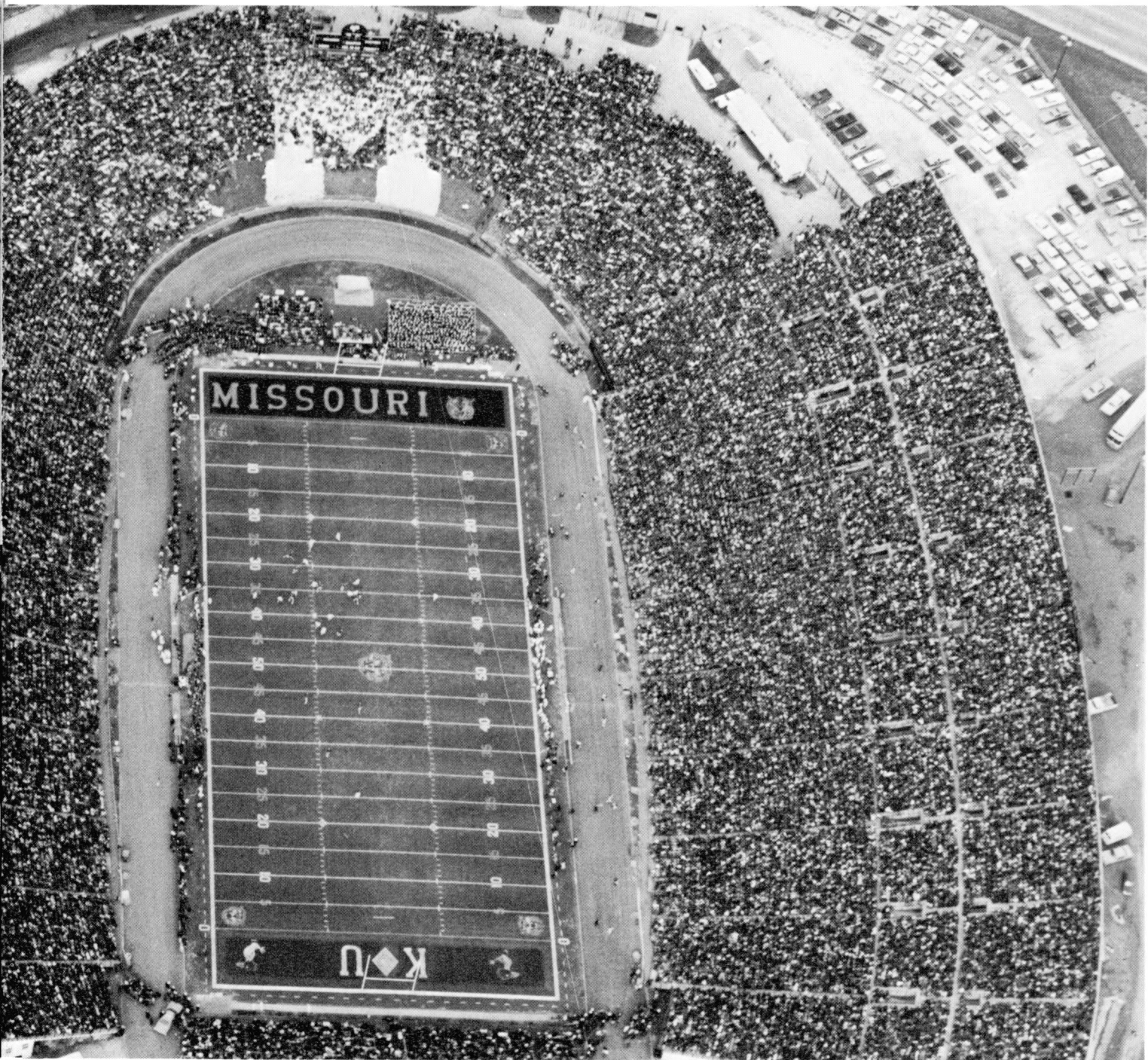
SEPT.	23	BAYLOR at COLUMBIA
SEPT.	30	CALIFORNIA at COLUMBIA
Oct.	7	Oklahoma State at Stillwater
Oct.	14	Nebraska at Lincoln
Oct.	21	Notre Dame at South Bend
OCT.	28	COLORADO at COLUMBIA
Nov.	4	Kansas State at Manhattan
Nov.	11	Oklahoma at Norman
NOV.	18	IOWA STATE at COLUMBIA
NOV.	25	KANSAS at COLUMBIA

## 1973

SEPT.	22	VIRGINIA at COLUMBIA
Sept.	29	North Carolina at Chapel Hill
Oct.	6	S.M.U. at Dallas
OCT.	13	NEBRASKA at COLUMBIA
OCT.	20	OKLAHOMA STATE at COLUMBIA
Oct.	27	Colorado at Boulder
NOV.	3	KANSAS STATE at COLUMBIA
NOV.	10	OKLAHOMA at COLUMBIA
Nov.	17	Iowa State at Ames
Nov.	24	Kansas at Lawrence



Memorial Stadium  
Home of the Tigers





# Scores (cont.)

1937	0	7	1921	17	14	<b>KANSAS</b>			1944	28	0
1938	0	21	1922	6	3	YEAR	M.U.	K.U.	1945	33	12
1939	7	6	1923	0	2	1891	8	22	1946	19	20
1940	0	7	1924	7	0	1892	4	12	1947	14	20
1941	28	0	1925	23	8	1893	12	4	1948	21	7
1942	6	6	1926	7	3	1894	12	18	1949	34	28
1943	13	20	1927	13	6	1895	10	6	1950	20	6
1944	21	21	1928	28	19	1896	0	30	1951	28	41
1945	14	6	1929	19	0	1897	0	16	1952	20	19
1946	6	27	1930	14	0	1898	0	12	1953	10	6
1947	12	21	1931	0	20	1899	6	34	1954	41	18
1948	7	41	1932	0	0	1900	6	6	1955	7	13
1949	7	27	1933	7	14	1901	18	12	1956	15	13
1950	7	41	1934	0	13	1902	5	17	1957	7	9
1951	20	34	1935	6	6	1903	0	5	1958	13	13
1952	7	47	1936	10	0	1904	0	29	1959	13	9
1953	7	14	1937	12	0	1905	0	24	1960	** 7	23
1954	13	34	1938	13	16	1906	0	0	1961	10	7
1955	0	20	1939	21	6	1907	0	4	1962	3	3
1956	14	67	1940	30	14	1908	4	10	1963	9	7
1957	14	39	1941	39	13	1909	12	6	1964	34	14
1958	0	39	1942	45	6	1910	5	5	1965	44	20
1959	0	23	1943	25	7	1911	3	3	1966	7	0
1960	41	19	1944	21	21	1912	3	12	1967	6	17
1961	0	7	1945	13	7	1913	3	0	1968	<u>19</u>	<u>21</u>
1962	0	13	1946	33	13	1914	10	7	Totals	922	899
1963	3	13	1947	26	7	1915	6	8	M.U. won	36	
1964	14	14	1948	49	7	1916	13	0	K.U. won	32	
1965	30	0	1949	32	0	1917	3	27	Tied	9	
1966	10	7	1950	20	20	1919	13	6			
1967	0	7	1951	14	21	1920	16	7			
1968	<u>14</u>	<u>28</u>	1952	19	0	1921	9	15			
Totals	598	993	1953	6	13	1922	9	7			
M.U. won	19		1954	32	14	1923	3	3			
O.U. won	35		1955	14	20	1924	14	0			
Tied	5		1956	34	0	1925	7	10			
			1957	35	13	1926	15	0			
			1958	14	6	1927	7	14			
			1959	14	0	1928	25	6			
			1960	34	8	1929	7	0			
			1961	13	7	1930	0	32			
			1962	21	6	1931	0	14			
			1963	7	0	1932	0	7			
			1964	10	0	1933	0	27			
			1965	23	7	1934	0	20			
			1966	10	10	1935	0	0			
			1967	23	7	1936	19	3			
			1968	<u>42</u>	<u>7</u>	1937	0	0			
			Totals	966	509	1938	13	7			
			M.U. won	38		1939	20	0			
			I.S. won	16		1940	45	20			
			Tied	7		1941	45	6			
						1942	42	13			
						1943	6	7			

\*Forfeit. Tigers refused to play scheduled game.

\*\*A 1-0 forfeit victory later awarded to MU when conference ruled opponents used ineligible players.

## IOWA STATE

YEAR	M.U.	I.S.
1896	0	12
1908	0	16
1909	6	6
1910	5	6
1911	3	6
1912	0	29
1913	21	13
1914	0	6
1915	6	14
1916	0	0
1917	0	15
1919	10	0
1920	14	2

# University of Missouri

## Individual and Team Bests in 1969

### TEAM HIGHS

Most Yards Passing—317, Iowa State  
 Most Pass Attempts—37, Oklahoma  
 Most Completions—17, Oklahoma  
 Most Yards Rushing—361, Air Force Academy  
 Most Total Offense—651, Kansas  
 Most First Downs—30, Kansas  
 Most Fumbles—6, Iowa State  
 Most Fumbles Lost—3, Illinois and Iowa State

### DEFENSIVE HIGHS AND LOWS

Most Pass Attempts—49, Kansas State  
 Most Completions—25, Kansas State  
 Most Yards Rushing—221, Kansas  
 Most Yards Passing—394, Kansas State  
 Most Total Offense—515, Kansas State  
 Least Completions—6, Colorado and Kansas  
 Least Yards Passing—98, Iowa State  
 Least Yards Rushing—36, Nebraska

### PLAYER

### LONGEST RUN

### BEST DAY

Joe Moore  
 Ron McBride  
 Terry McMillan  
 Jon Stagers

62 vs. Michigan  
 29 vs. Oklahoma  
 43 vs. Kansas St.  
 18 vs. Kansas

185 vs. Illinois  
 86 vs. Air Force  
 85 vs. Air Force  
 54 vs. Air Force

Longest run from scrimmage for TD—62, Moore vs. Michigan  
 Longest run, no score—43, McMillan vs. Kansas St.  
 Longest pass play for TD—75, McMillan to Gray vs. Colorado  
 Longest pass play, no score—56, McMillan to Henley vs. Air Force  
 Longest punt return for TD - None  
 Longest punt return, no score—58, Fountain vs. Oklahoma  
 Longest KO return for TD—99, Stagers vs. Kansas St.  
 Longest KO return, no score—41, Stagers vs. Nebraska  
 Longest pass interception for TD—47, Boyd vs. Illinois  
 Longest pass interception, no score—33, Poppe vs. Illinois  
 Longest punt—62, Kenemore vs. Air Force and Kansas St.  
 Most TDs in a game—3, Stagers and Gray vs. Kansas  
 Most Passes Attempted—37, McMillan vs. Oklahoma  
 Most Passes Completed—17, McMillan vs. Oklahoma  
 Most Yards Passing—317, McMillan vs. Iowa State  
 Most Passes Caught—6, Gray vs. Oklahoma  
 Most Yards Caught—171, Gray vs. Oklahoma  
 Most Yards Rushing—185, Moore vs. Illinois  
 Most FGs Attempted—6, H. Brown vs. Air Force  
 Most FGs—4, H. Brown vs. Air Force  
 Longest Field Goal—48, H. Brown vs. Nebraska and Colorado  
 Most Total Offense—328, McMillan vs. Oklahoma  
 Most Total Offense (Team)—651, Kansas



## Tiger's 1969 Game by Game Story

	RUSHING		MISSOURI		PASSING		OPPONENTS		PASSING	
	Tiger	Opp.	Pass	Pass	Had	Yds.	Pass	Pass	Had	Yds.
	Net	Net	Att.	Comp.	Int.	Gain	Att.	Comp.	Int.	Gain
Air Force	361	90	14	5	1	108	33	14	1	221
Illinois	249	122	24	10	2	155	19	10	2	154
Michigan	210	82	15	9	1	124	27	10	1	99
Nebraska	214	36	21	5	2	110	42	19	2	232
Oklahoma St.	238	141	26	9	3	111	33	10	3	191
Colorado	118	195	35	15	2	273	10	6	0	184
Kansas St.	264	121	23	13	1	227	49	25	3	394
Oklahoma	247	135	37	17	2	312	30	10	1	167
Iowa St.	228	57	36	16	2	317	36	13	2	98
Kansas	344	221	26	14	0	307	20	6	0	213
Totals:	2463	1200	257	113	16	2044	299	123	15	1953

## Final 1969 Standings

### ALL GAMES

Team	W	L	T	PCT.
Missouri	9	1	0	.900
Nebraska	8	2	0	.800
Colorado	7	3	0	.700
Oklahoma	6	4	0	.600
Kansas St.	5	5	0	.500
Oklahoma St.	5	5	0	.500
Iowa St.	3	7	0	.300
Kansas	1	9	0	.100

### CONFERENCE GAMES

Team	W	L	T	PCT.
Missouri	6	1	0	.857
Nebraska	6	1	0	.857
Colorado	5	2	0	.714
Oklahoma	4	3	0	.571
Okla. St.	3	4	0	.429
Kansas St.	3	4	0	.429
Iowa St.	1	6	0	.143
Kansas	0	7	0	.000

## Missouri In National Statistics

TOTAL OFFENSE — Sixth — 450.7-yard average

SCORING — Seventh — 36.2-point average

TOTAL OFFENSE — Terry McMillan — Twelfth — 2,157 yards

RUSHING — Joe Moore — Third — 1,312 yards

KICK-SCORING — Henry Brown — Third (tied) — 71 points



# 1969 Orange Bowl Roster

NO.	NAME	POS.	HT.	WT.	AGE	CLASS	HOMETOWN	NO.	NAME	POS.	HT.	WT.
63**	Adams, Sam	G	6-0	203	21	Sr.	Midland, Tex.	64	Mizer, Steve	T	6-0	203
23	Barnes, Charles	HB	6-1	219	19	Soph.	San Antonio, Tex.	45	*Moore, Joe	HB	6-1	198
64	Beattie, Mark	G	5-11	193	20	Soph.	Pittsfield, Ill.	52	Moore, Terry	C	6-5½	205
68	Bell, Scotty	G	6-1	229	20	Soph.	Sugar Creek	28**	Poppe, Dennis	HB	6-3	208
81	*Bennett, Mike	E	6-3	207	20	Jr.	Breckenridge	16	Roper, Chuck	QB	6-1	177
83	Borgard, Dan	E	6-2	190	20	Soph.	St. Louis (B-Dub)	93**	Shryock, Tom	E	6-0	195
33**	Boyd, Jerry	LB	6-3	203	21	Sr.	Butler	78	Sloan, Ron	T	6-2	205
47	Brinkley, Lorenzo	HB	6-0	175	20	Soph.	St. Louis (Bmt)	22**	Staggers, Jon	HB	5-10	185
15	Brinkman, Rex	HB	5-11	150	19	Jr.	Kirkwood	71	Stephenson, Tom	G	6-0	191
30	Britts, Sam	LB	5-11	201	20	Soph.	W. Alton	35	Stoeckel, Ron	LB	6-0	187
24**	Brown, Henry	HB	6-2	203	21	Sr.	Middletown, Pa.	11	Stotler, Ricci	HB	6-1	188
89	Brown, John	TE	6-1	221	19	Soph.	Poplar Bluff	96	Taylor, Ed	LB-E	6-0	190
86	Buha, Pete	HB	6-3	190	19	Soph.	Affton	65	*Vital, Adam	G	6-0	203
73	Burns, John	T	6-4	222	20	Soph.	Kansas City, Kans.	48	*Walls, Tyrone	HB	6-3	208
77	Caputo, Lou	T	6-4	215	20	Soph.	St. Louis (U-Hi)	74	Weaver, Mike	T	6-1	200
66**	Carroll, Mike	T	6-3	245	21	Sr.	Ste. Genevieve	26	*Weisenfels, Nip	LB	5-11	204
94	Colclasure, Chuck	E	6-2	187	21	Jr.	Wood River, Ill.	53	Wilson, Bob	C	6-1½	198
60	Cowan, John	T	6-1	203	20	Soph.	Springfield (G)	17	Venturi, John	QB	5-9	165
40**	Davis, "Butch"	HB	5-11	181	21	Sr.	Chillicothe					
38	Doak, James	E	6-2	202	20	Soph.	Cameron					
14	Farmer, Mike	QB	6-2	183	19	Soph.	Jefferson City					
41	Fink, Mike	HB	5-10	181	19	Soph.	Parkville					
27	*Fountain, George	HB	5-9	177	19	Jr.	Houston, Tex.					
85	Frieze, Dave	E	6-4	202	19	Soph.	Oak Grove					
43	Gardocki, Guy	HB	5-11	178	20	Soph.	Baldwinsville, N. Y.					
61	Gebhard, Kurt	T	6-3	219	20	Soph.	Brentwood					
88	Glosson, Ed	E	5-10	170	20	Soph.	San Antonio, Tex.					
36	*Harrison, James	FB	6-4	238	20	Jr.	San Antonio, Tex.					
84	*Hauptman, Joe	E	6-1	204	22	Sr.	Granite City, Ill.					
80	Henley, John	E	5-10	169	20	Soph.	San Bernardino, Calif.					
75	*Jackson, Larron	T	6-3	257	20	Jr.	St. Louis (8)					
34	Kamradt, Tom	HB	6-0	188	19	Soph.	Traverse City, Mich.					
62	Kelley, Dan	G	6-0	208	21	Jr.	St. Louis (SW)					
92	Kelley, Tim	E	6-2	201	20	Soph.	Cedar Rapids, Ia.					
46**	Kenemore, Steve	E	6-3	216	21	Sr.	Lee's Summit					
67	Kephart, Mickey	G	6-0	229	20	Soph.	N. Kansas City					
79	*Kuhlman, Mark	T	6-3½	218	21	Sr.	St. Louis (Normandy)					
70	*Lowder, Eric	T	6-4	218	21	Jr.	Kirkwood					
55**	Lundholm, Steve	LB	6-0	191	22	Sr.	Des Moines, Ia.					
54	Luther, Bob	G	6-0	196	20	Soph.	Kirkwood					
25	Mausser, Bill	HB	6-1	200	19	Soph.	Belleville, Ill.					
32**	McBride, Ron	FB	6-0	202	21	Sr.	Fulton					
31	McKee, Mike	FB	6-0	203	19	Soph.	Overland (Ch)					
18	*McMillan, Terry	QB	6-2	187	21	Sr.	Coral Gables, Fla.					

\*—Indicates number of years lettered



# Tigers Numerically

## AGE CLASS HOMETOWN

## NO. NAME

## POS.

## NO. NAME

## POS.

20 Soph. Kansas City (NE)  
 20 Jr. St. Louis (Bmt)  
 21 Soph. Granite City, Ill.  
 20 Sr. Anchor, Ill.  
 19 Soph. Brentwood  
 21 Sr. Fredericktown  
 21 Jr. Platte City  
 21 Sr. Jefferson City  
 20 Soph. Kansas City (RK)  
 21 Sr. Belleville, Ill.  
 19 Soph. Bethalto, Ill.  
 22 Sr. Centreville, Ill.  
 20 Jr. Houston, Tex.  
 21 Jr. Antioch, Ill.  
 19 Soph. Harrisonville  
 20 Jr. Webster Groves  
 22 Jr. Jefferson City  
 19 Soph. Pekin, Ill.

11 Stotler, Ricci	HB	54 Luther, Bob	G
14 Farmer, Mike	QB	55**Lundholm, Steve	LB
15 Brinkman, Rex	HB	60 Cowan, John	T
16 Roper, Chuck	QB	61 Gebhard, Kurt	T
17 Venturi, John	QB	62 Kelley, Dan	G
18 *McMillan, Terry	QB	63**Adams, Sam	G
21 *Gray, Mel	E	64 Mizer, Steve	T
22**Staggers, Jon	HB	65 *Vital, Adam	G
23 Barnes, Charles	HB	66**Carroll, Mike	T
25 Mauser, Bill	HB	67 Kephart, Mickey	G
26 *Weisenfels, Nip	LB	68 Bell Scotty	G
27 *Fountain, George	HB	70 *Lowder, Eric	T
28**Poppe, Dennis	HB	71 Stephenson, Tom	G
30 Britts, Sam	LB	73 Burns, John	T
31 McKee, Mike	FB	74 Weaver, Mike	T
32**McBride, Ron	FB	75 *Jackson, Larron	T
33**Boyd, Jerry	LB	77 Caputo, Lou	T
34 Kamradt, Tom	HB	78 Sloan, Ron	T
35 *Stoeckel, Ron	LB	79 *Kuhlman, Mark	T
36 *Harrison, James	FB	80 Henley, John	E
38 Doak, James	E	81 *Bennett, Mike	E
40**Davis, Butch	HB	83 Borgard, Dan	E
41 Fink, Mike	HB	84 *Hauptman, Joe	E
43 Gardocki, Guy	HB	85 Frieze, Dave	T
45 *Moore, Joe	TB	88 Glosson, Ed	E
46**Kenemore, Steve	E	89 Brown, John	E
47 Brinkley, Lorenzo	HB	92 Kelley, Tim	E
48 *Walls, Tyrone	HB	93**Shryock, Tom	E
52 Moore, Terry	C	94 Colclasure, Chuck	E
53 Wilson, Bob	C	96 Taylor, Ed	LB-E

\*Indicates number of years lettered.

## PRONUNCIATION GUIDE

BUHA . . . . . BOO-ha  
 CAPUTO . . . . . Kuh-POO-toe  
 COLCLASURE  
 . . . . . Coal-CLAY-zure  
 CRNKO . . . . . SURN-ko  
 MAUSER  
 . . . . . MOW (as in Ouch)-zer  
 POPPE . . . . . Pope  
 STOECKEL . . . . . STEC-el  
 WEISENFELS . . . . . WISE-en-fels



**M.U. OUT-SLUGS WILDCATS, 41-38**

**Missouri Crushes Iowa State, 40-13**

**Tigers 'bowl' over Oklahoma**

**MIZZOU BLISTERS KANSAS, 69-21**

**Orange  
Missou**

**MU  
Huske**

**Devine Wins Coaching Honor**

**ORANGE BOWL  
1970  
PENN. STATE  
MISSOURI**

**ORANGE BOWL  
1970  
PENN. STATE  
MISSOURI**

Missouri Crushes  
Hapless Illinois, 37-6

Mel Gray  
A.P. Lineman of the Week

TIGERS SLOG PAST  
POKES IN RAIN, 31-21

Bengal McMillan Big 8  
Back of Week 2nd Time

MISSOURI SHARES  
BIG 8 CROWN

Tigers Storm Past  
Michigan, 40-17

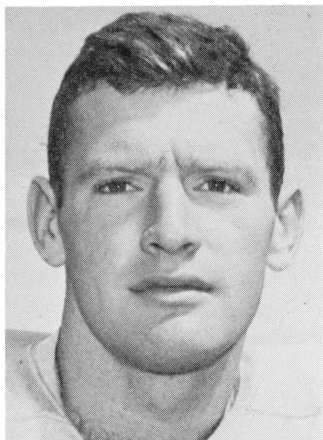
Orange Bowl Top  
Missouri Choice

Brown's Kick Wins  
For Missouri, 19-17

Missouri  
shucks  
17-7



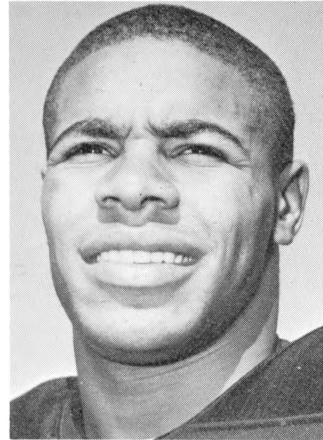
# Missouri All-Conference Selections (1928-1968)



WREN, Halfback, '51

BRAZNELL,  
Halfback, '49

STEWART, Center, '46

C. BROWN,  
Halfback, '65**BIG SIX**

- 1928 Miller Brown, E  
Bob Mehrle, HB  
1929 Keith Hursley, T.  
John Waldorf, HB  
Raymond Smith, C  
Paul Brayton, G  
1931 Charles Schiele, E  
1932 Charles Schiele, E  
1935 Clair Houston, FB  
1936 Houston Betty, C  
Maurice Kirk, G  
1938 Paul Christman, HB  
Kenneth Haas, T  
1939 Paul Christman\*, HB  
Kenneth Haas, T  
Roland Orf, E  
Charles Moser, C  
Robert Waldorf, G  
1940 Paul Christman, \*HB  
Darold Jenkins, C

- 1941 Harry Ice, HB  
Darold Jenkins\*, C  
Bob Jeffries, G  
Robert Steuber, HB  
Don Reece, FB  
Bud Wallach, T  
1942 Robert Steuber\*, HB  
Bert Ekern, E  
Mike Fitzgerald, G  
1943 Alfred Anderson, T  
Jack Morton, E  
Don Reece, FB  
1944 Paul Collins, QB  
Bill Dellastatious, HB  
Jim Kekeris, T  
1945 Leonard Brown, QB  
Robert Eigelberger, G  
Robert Hopkins, HB  
Jim Kekeris, T  
Roland Oakes, E  
Ralph Stewart, C

- 1946 Loyd Brinkman, HB  
Jim Kekeris, T  
Roland Oakes, E  
Ralph Stewart, C  
**BIG SEVEN**  
1947 Harold Entsminger, QB  
Chester Fritz, T  
Mel Sheehan, E  
1948 Harold Entsminger, QB  
Robert Fuchs, C  
Chester Fritz, T  
Mel Sheehan, E  
1949 Richard Braznell, HB  
1950 John Kadlec, G  
1951 Junior Wren, HB  
William Fuchs, C  
1952 Jack Lordo, G  
Ed Merrifield, HB  
1953 Robert Bauman, FB  
Terry Roberts, G

- 1954 Alvin Portney, T  
1955 Harold Burnine\*, E  
1956 Jimmy Hunter, QB  
1957 Charles Rash, G  
Henry Kuhlmann, FB  
1958 Don Chadwick, G  
Danny LaRose, E  
Charles Rash, G  
1959 Mike Magac, T  
Russ Sloan, E

**BIG EIGHT**

- 1960 Rockne Calhoun, T  
Paul Henley, G  
Danny LaRose\*, E  
Mel West, HB  
1961 Ed Blaine, \*T  
Conrad Hitchler, E  
Bill Wegener, T  
1962 Tom Hertz, G  
Conrad Hitchler\*, E

# M.U. Coaches' Scoreboard

	Coach	Yrs.	Date	Won	Lost	Tied	Pct.
	William Roper	1	1909	7	0	1	.938
	C.D. "Pop" Bliss	1	1895	7	1	0	.875
	David L. Fultz	2	1898-99	10	6	1	.818
	James Phelan	2	1920-21*	13	3	0	.813
1963	John F. Miller	2	1919-20*	5	1	2	.750
	Hal Reid	1	1891	3	1	0	.750
1964	W. J. Monilaw	3	1906-08	18	6	1	.740
	Dan Devine	12	1958	88	30	7	.732
	A. L. McRae	1	1890	2	1	0	.666
	C. L. Brewer	3	1911-13	14	8	2	.625
	Thomas Kelly	1	1922	5	3	0	.625
	Pat O'Dea	1	1902	5	3	0	.625
	W. Hollenbeck	1	1910	4	2	2	.625
1965	Frank Patterson	1	1896	7	5	0	.615
	Gwinn Henry	9	1923-31	40	28	9	.578
	H. L. Robinson	2	1893-94	8	6	0	.571
	Don Faurot	19	1935-42				
			1946-56	101	79	10	.558
	Frank Broyles	1	1957	5	4	1	.550
	H. F. Schulte	4**	1914-18	16	14	2	.531
1966	Chauncey Simpson	3	1943-45	12	14	2	.464
	Charles Young	1	1897	5	6	0	.458
	Fred Murphy	2	1900-01	6	10	2	.389
1967	John McLean	3	1903-05	9	17	1	.352
	E. H. Jones	1	1892	1	2	0	.333
	Frank Carideo	3	1932-34	2	23	2	.111

\*James Phelan took over as coach during the 1920 season

\*\*No varsity team in 1918



\*All-American

## Panel Picks Greatest Mizzou Games

Interested in touching off a hot argument among Tiger football buffs? Okay, what are the three greatest football games ever played by a Missouri Team?

Though the spectrum of M.U. football covers 77 years, there are obviously few qualified observers who have witnessed a half-century of gridiron battles involving Ol' Mizzou. So—any panel of “experts” would be of questionable validity.

Recently, however, some close-to-the-scene fans set out to determine Missouri's most prestigious games in this centennial year of intercollegiate football.

It proved to be a considerable chore. What were to be the ground-rules for selection? The panel used these evaluators in arriving at their choices—national impact, upset significance, drama, and coaching strategy.

Here are the consensus picks:

1. Missouri 35, Alabama 10 (1968 Gator bowl)
2. Missouri 21, Navy 14 (1961 Orange bowl)
3. Missouri 20, S.M.U. 14 (1948)

The Tigers' smashing win over 'Bama, the panel reasoned, probably focused more national attention on Mizzou than any other victory in the school's history. Viewed by a nationwide television audience, the game was a stunning reversal of form.

Without completing a single pass, Ol' Mizzou chewed up the Tide's vaunted defense—and then turned in a masterful defensive effort of its own. Alabama finished with a minus-45 yards rushing. It was the third worst setback in Coach Paul “Bear” Bryant's distinguished coaching career.

The win over favored Navy was another bright feather for Missouri. Halfback Norm Beal's 90-yard scoring runback of a pass interception shut off the Middies' momentum, as the Tigers roared back from a 6-0 handicap. A rugged Bengal defense stopped Joe Bellino, Heisman trophy winner, with 4 net rushing yards—and stalled the Navy offense with a minus-8 yards on the ground.

Norm Beal (21) bolts 90 yards for TD on a pass interception against Navy in 1961 Orange Bowl game.





Both of those triumphs, of course, were recorded during the Dan Devine era—while the third was a Don Faurot production.

High-flying Southern Methodist, featuring Doak Walker and Kyle Rote, rode a 16-game winning streak into Columbia early in '48—when Bus Entsminger & Co. bedazzled the Mustangs with a brilliant display of the Split T offense.

Long-time Mizzou adherents still rate this stunning upset as their top preference. It was the only setback in a 9-1 season for Matty Bell's Mustangs en route to their second Cotton Bowl bid. Faurot was named Coach-of-the-Week nationally.

Those were the top games in the panel's judgment. But how about all those other thriller-dillers that didn't make the top-three?

Going back to the 20's, two Mizzou triumphs merited large huzzahs—a 3-0 win over Chicago's Western conference champions in 1924, and a 34-19 decision over

Northwestern in 1927.

In the next decade, Pitchin' Paul Christman broke an 11-year span of futility against Nebraska—at Lincoln in 1938. The blond sophomore passed Mizzou to a spectacular 13-10 victory.

A year later, Missouri's 7-6 squeaker over Oklahoma in Columbia, was a significant effort. It gave Faurot his first conference title, and Mizzou its first bowl trip.

Then there was Missouri 27, Duke 0 in 1947—and Devine's memorable 20-15 dispatch of Michigan in 1959.

On into the 60's, there were these notable wins—41-19 over Oklahoma at Norman in 1960, 6-0 over Minnesota's defending national champions in 1961, 10-7 over favored Kansas in 1961, 14-10 over Georgia Tech in the 1962 Bluebonnet bowl, 7-6 over Arkansas in 1963, 20-18 over Florida in the 1966 Sugar Bowl, 21-14 over Illinois in 1966, and 10-7 over Nebraska in 1967.



# Missouri's Individual All-Time Football Records

## SCORING

### Career

**MOST POINTS**—Bob Steuber—222—(1940-42)  
**MOST TOUCHDOWNS**—Bob Steuber—32—(1940-42)

### One Season

**MOST POINTS**—Bob Steuber—121—(1942)  
**MOST TOUCHDOWNS**—Bob Steuber—18—(1942)

### One Game

**MOST POINTS**—Bob Steuber—20—(Iowa State, 1942)  
**MOST TOUCHDOWNS**—3—(14 players)  
Paul Christman (Colo. 1939)  
Harry Ice (Iowa State 1940)  
Maurice Wade (Okla. 1941)  
Bob Steuber (St. Louis 1942)  
Bob Steuber (Iowa St. 1942)  
Bill Dellastatious (Iowa St. 1943)  
Bill Dellastatious (Minn. 1944)  
Paul Collins (Okla. 1944)  
Phil Klein (Ohio St. 1949)  
Bob Schoonmaker (Neb. 1953)  
Hank Kuhlmann (Ariz. 1957)  
Donnie Smith (Air Force 1960)  
Donnie Smith (Okla. 1960)  
John Roland (Calif. 1962)  
John Roland (Colo. 1962)  
Gary Lane (Colo. 1963)  
Gary Lane (Okla. 1965)  
John Roland (Kansas 1965)  
James Harrison (Iowa St. 1968)  
Terry McMillan (Alabama 1968)  
Mel Gray (Kansas, 1969)  
Jon Staggers (Kansas, 1969)

## RUSHING

### Career

**MOST RUSHING YARDS**—Bob Steuber—2004—(1940-42)  
1940— 10 carries for 51  
1941—113 carries for 855  
1942—149 carries for 1098

### One Season

**MOST RUSHING YARDS**—Joe Moore—1,312—(1969)

### One Game

**MOST RUSHING YARDS**—Harry Ice—218—(Kansas 1941)  
(11 carries)

## PASSING

### Career

**MOST PASSES COMPLETED**—Paul Christman (1938-40)  
1938—61 for 142 and 1087 yards  
1939—64 for 134 and 774 yards  
1940—70 for 150 and 1195 yards  
**MOST TOUCHDOWN PASSES**—Paul Christman—25—  
(1938-40) Paul Christman—25—(1938-40)

### One Season

**MOST PASSES COMPLETED**—Terry McMillan—105 (of  
233 attempts)—1969  
**MOST ATTEMPTS**—Terry McMillan—233 (105 com-  
pleted)—1969  
**MOST YARDAGE**—Terry McMillan—1,963—1969  
**MOST TOUCHDOWN PASSES**—Terry McMillan—18—1969

### One Game

**MOST PASSES COMPLETED**—Tony Scardino—23 for 42  
and 365 yards (Oklahoma 1951)  
**MOST TOUCHDOWN PASSES**—Terry McMillan—4—  
(Kansas, 1969)



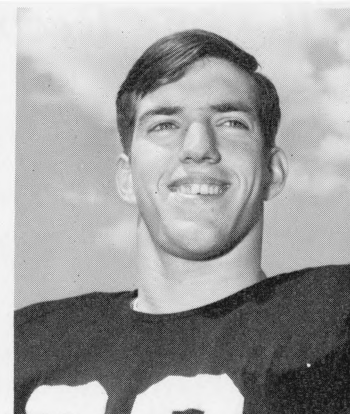
STEUBER



ICE



CHRISTMAN



WEHRLI

## PASS RECEIVING

### Career

MOST PASSES CAUGHT—75—Harold Burnine (1953-55)

MOST PASSING YARDAGE—1,145—Harold Burnine (1953-55)

1953— 9 for 146 yards

1954—22 for 405 yards

1955—44 for 594 yards

### One Season

MOST PASSES CAUGHT—44—Harold Burnine (1955)

MOST PASSING YARDAGE—705—Mel Gray (1969)

MOST YARDAGE PER RECEPTION—27.1—Mel Gray (1969)

MOST TOUCHDOWN CATCHES—9—Mel Gray (1969)

### One Game

MOST PASSES CAUGHT—9—Gene Ackermann—(Colorado 1949) Junior Wren—(Oklahoma 1951)

MOST PASSING YARDAGE—171—Mel Gray—(Oklahoma, 1969)

## PUNT RETURNS

### Career

MOST TOTAL YARDS—1062—Roger Wehrli—(1966-68)

### One Season

MOST TOTAL YARDS—478—Roger Wehrli—(1968-10 games)

### One Game

MOST TOTAL YARDS—129—Roger Wehrli—(6 returns—Iowa State 1968)

## INTERCEPTION RETURNS

### Career

MOST INTERCEPTIONS—11 for 148 yards—Roger Wehrli (1966-69); 11 for 130 yards—Andy Russell (1960-62)

### One Season

MOST INTERCEPTIONS—8 for 133 yards—Roger Wehrli (1968); 8 for 69 yards—Andy Russell (1962)

### One Game

MOST INTERCEPTIONS—3 for 45 yards—Roger Wehrli—(1968, Oklahoma State)

## TOTAL OFFENSE

### Career

MOST TOTAL YARDS—4133—Paul Christman—(1938-40)

## *All-Time Records (cont.)*

### **One Season**

**MOST TOTAL YARDS**—2,157—Terry McMillan—(1969)

### **One Game**

**MOST TOTAL YARDS**—359 (51 plays)—Tony Scardino—(1951)

### **KICKING**

**LONGEST PUNT**—80 yards—Ray West—(Kentucky 1965)

**BEST PUNTING AVERAGE** (one game)—48.3, Harry Ice—(Fordham 1942)

**BEST PUNTING AVERAGE** (one season)—43.7—Bob Teel (1946)

### **PLACE-KICKING**

**MOST CONVERSIONS** (career)—56—Bob Dawson (1947-48)

**MOST CONVERSIONS** (one season)—38—Bob Dawson (1948) (Does not include 3 made in Gator Bowl)

**MOST CONVERSIONS** (one game)—7—Bob Dawson (Iowa State and Kansas State, 1948—on consecutive Saturdays) ; Henry Brown (Kansas, 1969)

**MOST CONSECUTIVE CONVERSIONS** (career)—29—Charles Rash (1956-1958)

**MOST CONSECUTIVE CONVERSIONS** (one season)—22—Bill Tobin (1960)

**BEST CONVERSION PERCENTAGE** (one season)—100%—Charles Rash (1957—20 of 20); Bill Bates (1966—12 of 12); Rocky Wallace (1967—15 of 15)

**LONGEST FIELD GOAL**—52 yards—Bill Bates (Oklahoma, 1966)

**MOST FIELDGOALS** (One season)—12—Henry Brown (1969)

**MOST FIELDGOALS** (one game)—4—Henry Brown (Air Force, 1969)

**MOST POINTS FOR A KICKER** (one season)—71—Henry Brown (1969)

### **MISCELLANEOUS**

**LONGEST RUSH FROM SCRIMMAGE**—90 yards (TD)—Harry Ice—(Iowa State 1941)

**LONGEST KICKOFF RETURN**—100 yards—Russell Dills—(Kansas 1928)

**LONGEST PASS COMPLETION**—79 yards (catch and run)—Terry McMillan to Mel Gray (Kentucky 1968)

**LONGEST PUNT RETURN**—90 yards (TD)—Donnie Smith (Air Force 1960)

**LONGEST RUNBACK OF INTERCEPTED PASS**—96 yards (TD)—Ken Boston (Oklahoma State, 1964)

**LONGEST RUNBACK OF INTERCEPTED LATERAL**—77 yards (TD)—Don Greenwood—(Iowa State 1940)

**LONGEST RUNBACK OF INTERCEPTED FUMBLE**—103 yards—Vince Turner—(Kansas 1963)

### **MISSOURI TEAM RECORDS**

#### **Since 1928**

#### **Scoring**

**MOST POINTS ONE GAME**—69— (Kansas, 1969)

**MOST POINTS ONE SEASON**—362 for 10 games in 1969

**LEAST POINTS ONE SEASON**—25—(1934 for 9 games)

**MOST OPPONENTS POINTS ONE GAME**—

74 (Maryland 1954)

67 (Oklahoma 1956)

65 (Texas 1932)

**LEAST OPPONENT'S POINTS ONE SEASON**—28—(1929 for 8 games)

**GREATEST WINNING MARGIN**—60-0—(Centre 1928)

**GREATEST LOSING MARGIN**—65-0 (Texas 1932)

#### **First Downs**

**MOST FIRST DOWNS ONE SEASON**—220 (1968 for 11 games)

**MOST FIRST DOWNS ONE GAME**—31—(Kansas, 1949)

**MOST OPPONENTS FIRST DOWNS**—25—(S.M.U., 1950)

**LEAST MISSOURI FIRST DOWNS**—4—(Ohio State 1943), Minnesota 1945)

**LEAST OPPONENT'S FIRST DOWNS**—1—(Colorado 1946)



DAWSON

## RUSHING

- MOST RUSHING YARDS ONE SEASON—3230—  
(1942 for 12 games)  
 MOST RUSHING YARDS ONE GAME—466—(Kansas  
State, 1947)  
 MOST OPPONENT'S RUSHING YARDS ONE GAME—  
492—(Maryland, 1954)  
 LEAST OPPONENT'S RUSHING YARDS ONE GAME—  
minus 45—(Alabama, 1968 Gator Bowl)

## PASSING

- MOST PASSING YARDS ONE SEASON—2,048 (1969)  
 MOST PASSES ATTEMPTED ONE SEASON—284—  
(1951)  
 MOST PASSES COMPLETED ONE SEASON—124—  
(1951)  
 MOST TOUCHDOWN PASSES ONE SEASON—20 (1969)  
 MOST PASSES ATTEMPTED ONE GAME—50—(Okla-  
homa, 1951)  
 MOST PASSES COMPLETED ONE GAME—26—(of 50  
attempted) (Oklahoma, 1951)  
 MOST PASSING YARDAGE ONE GAME—406—(Okla-  
homa, 1951)

## TOTAL OFFENSE

### Rushing & Passing

- MOST TOTAL YARDS ONE SEASON—4,507 (1969, 10  
games—2,048-P, 2,459-R)  
 MOST TOTAL YARDS ONE GAME—665 (Kansas, 1949)  
(465R and 200P)  
 MOST OFFENSIVE PLAYS ONE GAME—105—(Kansas,  
1949)  
 MOST OPPONENT'S TOTAL YARDS ONE GAME—602  
—(Oklahoma, 1956) (464R and 138P)  
 MOST OPPONENT'S TOTAL YARDS ONE SEASON—  
3206—1957) (2803R and 403P)

## CONSECUTIVITY

- MOST CONSECUTIVE GAMES WON (all-time)—12  
(1959-'60)  
 MOST CONSECUTIVE GAMES LOST—9—(1931-32)  
(1932-'33) (1933-'34)

## FUMBLES

- MOST FUMBLES ONE GAME—10—(Colorado, 1941)  
(recovered 6)  
 MOST OPPONENT'S FUMBLES RECOVERED ONE  
GAME—8—(Kansas, 1950)  
 MOST FUMBLES LOST ONE GAME—7 out of 7 (Kansas,  
1949)  
 MOST FUMBLES LOST ONE SEASON—29—(1956)

## PASS INTERCEPTIONS

- MOST PASS INTERCEPTIONS ONE SEASON—28—  
(1941)  
 MOST PASS INTERCEPTIONS ONE GAME—8—(Iowa  
State, 1946)  
 MOST OPPONENT'S PASS INTERCEPTIONS ONE  
SEASON—30—(1951)  
 MOST OPPONENT'S PASS INTERCEPTIONS ONE  
GAME—7—(Kansas State, 1951) (Oklahoma State,  
1952) (Oklahoma, 1952)

# All-Time Records (cont.)

## MISCELLANEOUS

Since 1928

GREATEST WINNING MARGIN NON-CONFERENCE—  
60-0 (Centre 1928)

GREATEST WINNING MARGIN CONFERENCE—57-0  
(Colorado 1962)

WORST DEFEAT NON-CONFERENCE—65-0 (Texas  
1932)

MOST GAMES MISSOURI HELD SCORELESS ONE  
SEASON—6 (1930 and 1934)

MOST GAMES OPPONENT HELD SCORELESS ONE  
SEASON—5 (1929 and 1941)

MOST YARDS LOST BY PENALTIES ONE GAME—155  
(K-State 1947)

LEAST YARDS LOST BY PENALTIES ONE GAME—0  
(Oklahoma 1943 and Kansas 1964)

LARGEST HOME CROWD—62,200 (Kansas, 1968)

LARGEST AWAY CROWDS—75,280 (Georgia—Orange  
Bowl 1960)

73,000 (Fordham—Sugar Bowl 1942)

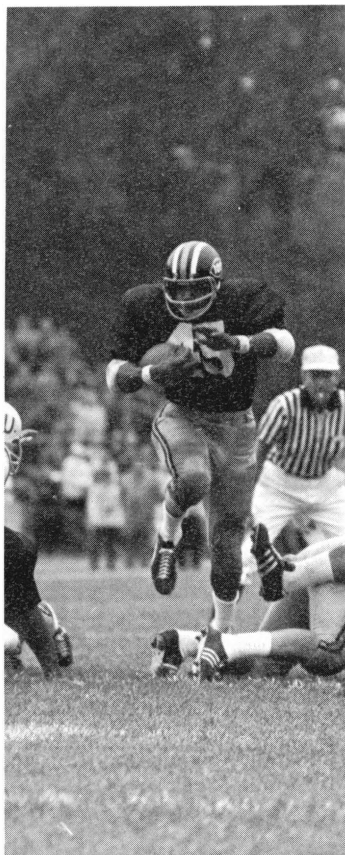
71,218 (Navy—Orange Bowl 1961)

68,011 (Alabama—Gator Bowl 1968)

67,421 (Florida—Sugar Bowl 1966)

66,510 (Ohio State 1949)

61,826 (Oklahoma 1962)



## Joe Moore Game-By-Game in 1969

GAME	ATTS	GAIN	LOSS	NET	TDs
Air Force	25	132	2	130	0
Illinois	23	191	6	185	1
Michigan	19	123	6	117	1
Nebraska	38	135	1	134	0
Oklahoma St.	26	120	0	120	1
Colorado	19	70	2	68	0
Kansas St.	35	145	1	144	0
Oklahoma	23	111	1	110	1
Iowa State	29	140	0	140	0
Kansas	23	167	3	164	1
TOTALS:	260	1334	22	1312	5

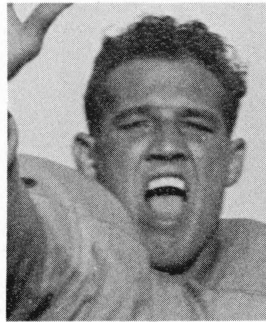
Joe Moore's touchdowns this year came on rushes of 9, 22, 53, 58, and 62 yards. The 9-yd. run came against Oklahoma State, the 22-yd. run against Oklahoma, the 53-yd. run against Kansas, the 58-yd. run against Illinois, and the 62-yd. run, his longest of the year came against Michigan.



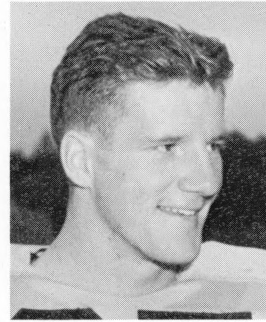
FRYE



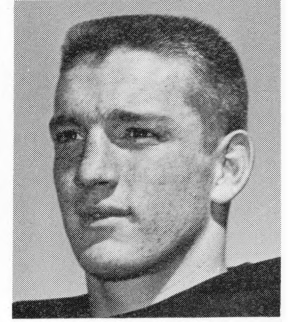
GLORIOSO



BRINKMAN



ROWEKAMP



SMITH

## Leading Tiger Scorers

(Since 1928)

				Total					
	TD's	PATS	Points						
1928	Robert Mehrle	5	2	30	1950	Ed Stephens	9	0	54
1929	Russell Dills	4	2	26	1951	James Hook	6	0	36
1930	John Van Dyne	2	2	14	1952	Bill Rowekamp	7	0	42
1931	George Stuber	3	0	18	1953	Bob Schoonmaker	6	0	36
1932	Charles Schiele	2	0	12	1954	Jack Fox	6	11	47
1933	Sidney Johnson	3	0	18	1955	Jim Hunter & Joe Wynn	3	0	18
1934	Harold Bourne	2	1	13	1956	Henry Kuhlmann	6	1	37
1935	Al Londe & Henry Mahley	3	0	18	1957	Henry Kuhlmann	8	0	48
1936	Jack Frye	4	9	36*	1958	Phil Snowden	6	1	37
1937	Henry Mahley	1	2	8	1959	Donnie Smith	4	0	24
1938	Paul Christman	8	0	48	1960	Donnie Smith	13	0	78
1939	Paul Christman	7	0	42	1961	Bill Tobin	3	11	38**
1940	Harry Ice	7	0	42	1962	John Roland	13	0	78
1941	Robert Steuber	9	13	67	1963	Gary Lane	6	0	36
1942	Robert Steuber	18	13	121	1964	Gary Lane Charlie Brown	4	2	26
1943	Bill Dellastatious & Don Reece	6	0	36	1965	Gary Lane	9	0	54
1944	Paul Collins	10	0	60	1966	Bill Bates	0	12	27***
1945	Loyd Brinkman & Robert Hopkins	5	0	30	1967	Jay Wallace	0	15	27****
1946	Howard Bonnett & Loyd Brinkman	5	0	30	1968	James Harrison	8	0	48
1947	Nick Carras	5	0	30	1969	Henry Brown	0	35	71*****
1948	Harold Entsminger	9	0	54					
1949	John Glorioso	8	29	77					

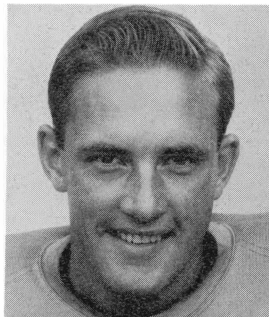
\*One field goal included in scoring total

\*\*Three field goals included in scoring total

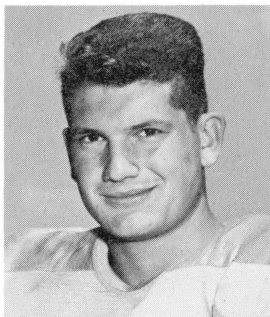
\*\*\*Five field goals included in scoring total

\*\*\*\*Four field goals included in scoring total

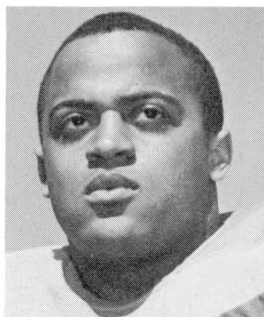
\*\*\*\*\*Twelve field goals included in scoring total



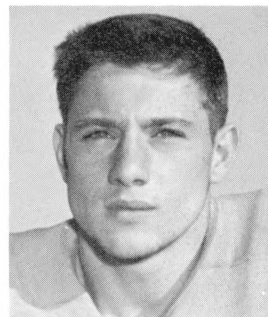
ENTSMINGER



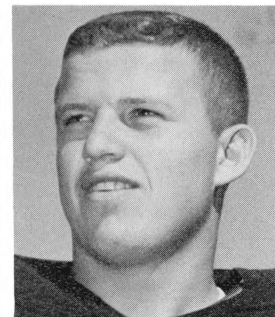
BAUMAN



WEST



SCARDINO



TAYLOR

## M.U. Post-War Departmental Leaders

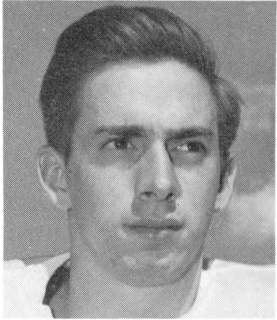
### RUSHING

Year	Name	Times Carried	Net Gain	Avg.
1947	Entsminger	88	446	5.1
1948	Braznell	89	484	5.4
1949	Braznell	145	766	5.3
1950	Glorioso	106	503	4.7
1951	Wren	103	451	4.3
1952	Hook	141	741	5.2
1953	Bauman	90	405	4.5
1954	Bauman	60	293	4.8
1955	Roll	99	432	4.3
1956	Kuhlmann	87	440	5.0
1957	Kuhlmann	136	554	4.1
1958	West	131	642	4.8
1959	West	122	556	4.6
1960	West	138	650	4.7
1961	Russell	100	412	4.1
1962	Roland	159	830	5.2
1963	Reese	67	300	4.5
1964	Lane	100	432	4.3
1965	Brown	174	937	5.4
1966	Brown	139	576	3.9
1967	Lischner	174	647	3.7
1968	Cook	161	693	4.4
1969	J. Moore	260	1312	5.0

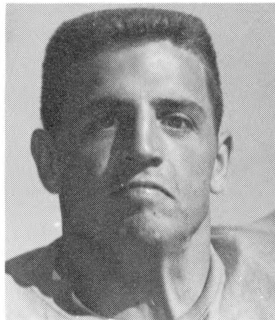
### PASSING

Year	Name	Att.	Comp.	Had Int.	Yards
1947	Entsminger	50	22	1	372
1948	Entsminger	90	43	6	633
1949	Klein	122	55	5	808
1950	Klein	84	50	6	625
1951	Scardino	96	42	7	653
1952	Scardino	129	52	11	781
1953	Eaton	53	24	2	364
1954	Eaton	74	36	2	774
1955	Doane	113	52	8	774
1956	Hunter	91	42	6	567
1957	Snowden	57	24	6	299
1958	Snowden	86	46	8	550
1959	Snowden	83	33	10	415
1960	Taylor	44	23	4	302
1961	Taylor	62	31	6	428
1962	Johnson	33	12	6	198
1963	Lane	113	51	9	710
1964	Lane	119	50	14	770
1965	Lane	106	45	3	544
1966	Kombrink	77	32	7	433
1967	Kombrink	97	34	8	452
1968	McMillan	113	56	7	745
1969	McMillan	233	105	13	1963

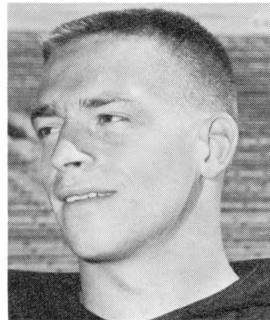




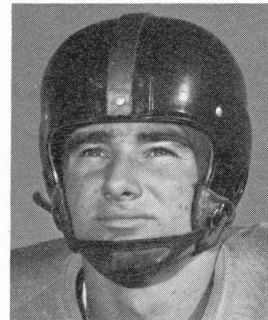
KLEIN



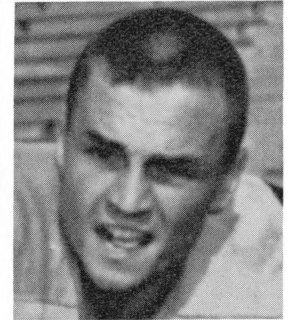
EATON



HAAS



ACKERMANN



JAMES

## PASS RECEIVING

Year	Name	Number	Yards	T.D. Passes
1947	Sheehan	14	218	2
1948	Sheehan	23	346	3
1949	Ackerman	42	621	2
1950	Ackermann	31	400	3
1951	Carter	24	456	2
1952	Jennings	14	219	0
1953	Corpeny	12	179	2
1954	Burnine	22	405	2
1955	Burnine	44	594	2
1956	James	30	362	1
1957	James	12	132	1
1958	LaRose	14	215	0
1959	Sloan	13	128	3
1960	LaRose	10	151	2
1961	Hitchler	8	124	0
1962	B. Tobin	3	75	2
1963	Saussele	8	115	1
1964	Denny	10	222	1
1965	Phelps	17	207	2
1966	C. Weber	14	157	3
1967	C. Weber	15	212	1
1968	Staggers	19	171	0
1969	Gray	26	705	9

## PUNTING

Year	Name	Number	Yards	Avg.
1946	Teel	11	481	43.7
1947	Day	53	1971	37.2
1948	Robinson	46	1523	33.3
1949	Klein	35	1125	32.1
1950	Klein	33	1219	36.9
1951	Wren	50	1780	35.6
1952	Fessler	46	1765	38.4
1953	Eaton	34	1222	35.9
1954	Eaton	21	704	33.5
1955	Curtright	15	563	37.5
1956	Hunter	25	820	32.8
1957	Haas	27	1126	41.7
1958	Snowden	28	1127	40.0
1959	Haas	37	1304	35.2
1960	LaRose	33	1179	35.7
1961	Krugman	56	2020	36.1
1962	Krugman	47	1656	35.2
1963	Krugman	57	2200	38.6
1964	Lane	48	1728	36.0
1965	West	52	2071	40.0
1966	Bates	72	2763	38.4
1967	Kenemore	73	2828	38.8
1968	Kenemore	56	2223	39.6
1969	Kenemore	58	2270	39.1

# University of Missouri

## Records Set During the 1969 Season

### **INDIVIDUAL — Season**

Most yards rushing — 1,312 - Joe Moore  
Most yards passing — 1,963 - Terry McMillan  
Most passes attempted — 233 - Terry McMillan  
Most complete passes — 105 - Terry McMillan  
Most touchdown passes — 18 - Terry McMillan  
Most total offense — 2,157 - Terry McMillan (1963 passing, 194 rushing)  
Most pass reception yardage — 705 - Mel Gray  
Most yardage per reception — 27.1 - Mel Gray  
Most touchdowns by a non-running back — 10 - Mel Gray (9 pass., 1 rush.)  
Most fieldgoals — 12 (20 attempts) - Henry Brown  
Most points for a kicker — 71 - Henry Brown

### **INDIVIDUAL — One Game**

Most touchdown passes — 4 - Terry McMillan (Kansas, 11-22)  
Most pass reception yardage — 171 - Mel Gray (Oklahoma, 11-8)  
Most field goals — 4 - Henry Brown (Air Force, 9-20)

### **TEAM — Season**

Most points — 362 (10 Games)  
Most total offense — 4,507 (2,048 yds. passing, 2,459 yds. rushing)  
Most yards passing — 2,048  
Most touchdown passes — 20

### **TEAM — One game**

Most points (modern times) — 69 (Kansas)

### **RECORDS TIED**

Three Touchdowns in one game — Mel Gray & Jon Staggers (held by fourteen other Missouri Tigers) Kansas (11-22)  
Seven conversions — Henry Brown (held by Bob Dawson, 1948)

### **BIG 8 RECORDS SET**

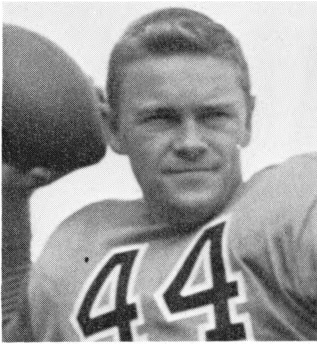
Most touchdown passes — 18 - Terry McMillan  
Most yardage per reception (season) — 27.1 - Mel Gray  
Most touchdown passes — 20 (team)

### **BIG 8 RECORD TIED**

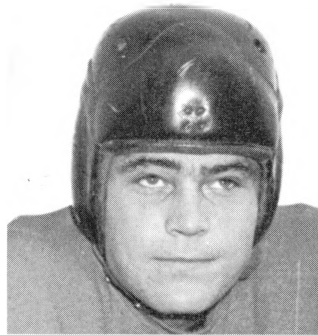
Most field goals (Game) — 4 - Henry Brown (Air Force)

The 651 yards in total offense by Missouri in the Kansas game was the highest output by a Missouri team during the Dan Devine era. The previous high was 559 yards in the November 8 game against Oklahoma.

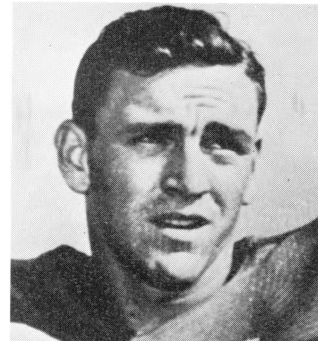
# Mizzou's Football All-Americans



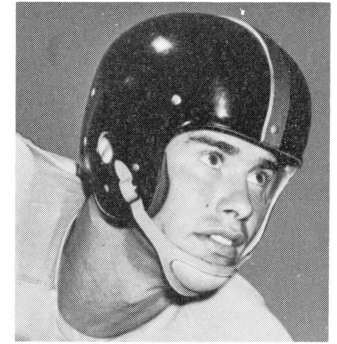
Paul Christman, '39-'40



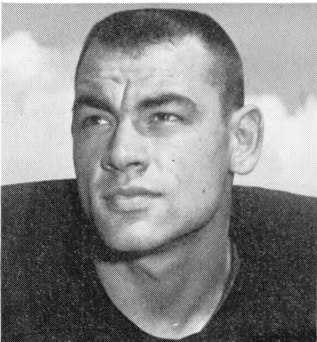
Darold Jenkins, '41



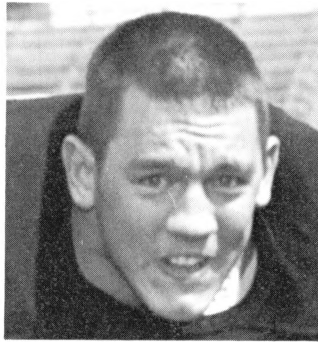
Bob Steuber, '42



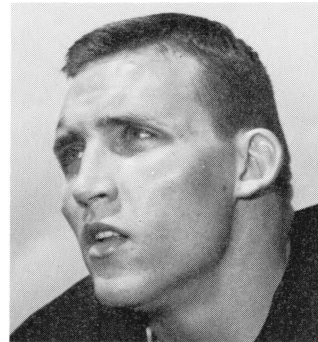
Harold Burnine, '55



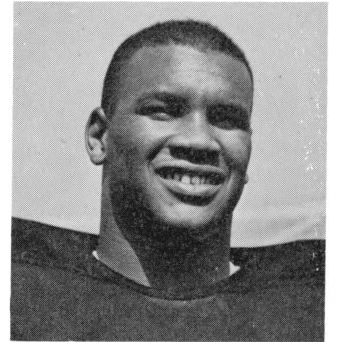
Danny LaRose, '60



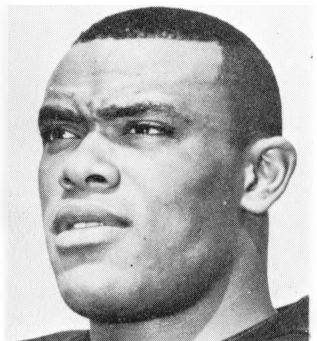
Ed Blaine, '61



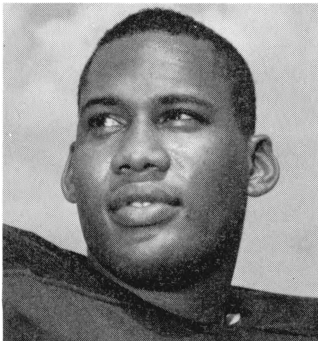
Conard Hitchler, '62



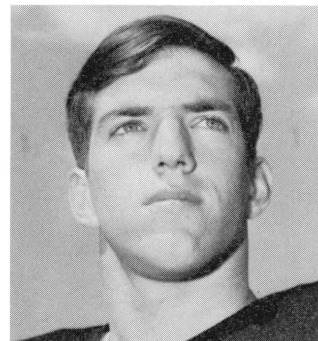
Johnny Roland, '65



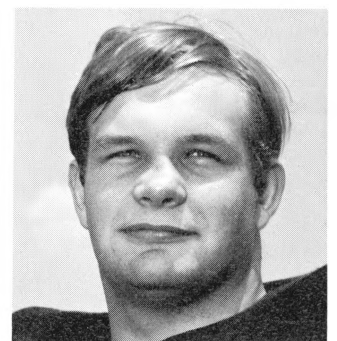
Francis Peay, '65



Russ Washington, '67



Roger Wehrli, '68



Mike Carroll, '69

# Tiger Record Against All Foes

## 1890-1968

School	Games				Pts. M.U.	Pts. Opp.	School	Games				Pts. M.U.	Pts. Opp.
	Played	Won	Lost	Tied				Played	Won	Lost	Tied		
Air Force	3	3	0	0	64	15	Miami U. (Fla.)	1	0	1	0	9	27
Alabama	1	1	0	0	35	10	Michigan State	6	3	3	0	45	36
Amity	2	2	0	0	26	4	Michigan	2	1	1	0	27	57
Arizona	3	3	0	0	69	23	Minnesota	7	3	3	1	87	105
Arkansas	3	2	1	0	24	13	Missouri Valley	2	2	0	0	115	0
Army	1	1	0	0	7	3	Missouri Wesleyan	2	2	0	0	55	0
Austin Mutes (Tex.)	1	1	0	0	39	0	North Dakota State	1	1	0	0	42	0
Baker (Kans.)	1	0	1	0	0	28	Nebraska	62	27	32	3	748	939
California	4	1	2	1	63	73	New York U.	6	3	3	0	85	86
Cape Girardeau (Mo.)	1	1	0	0	20	0	Northwestern	6	3	3	0	87	117
Christian Bros. College	2	2	0	0	45	0	Ohio State	9	0	8	1	80	241
Center College (Ky.)	1	1	0	0	60	0	Oklahoma	59	19	35	5	598	993
Central College (Mo.)	5	5	0	0	211	7	Oklahoma State	15	13	2	0	296	89
Chicago	2	1	1	0	9	19	Oregon State	1	0	1	0	13	19
Clemson (S.C.)	2	0	2	0	23	58	Ottawa (Kans.)	2	0	1	1	6	34
Colorado	33	22	8	2	616	350	Pastime A.C. (Tex.)	1	1	0	0	24	12
Dallas A.C. (Tex.)	1	1	0	0	28	0	Penn State	2	1	1	0	29	27
Denver A.C. (Colo.)	2	0	2	0	0	66	Picked Team (Columbia)	1	1	0	0	22	6
Depauw	1	1	0	0	31	0	Pittsburgh	1	0	1	0	13	19
Drake	18	14	4	0	281	146	Purdue	7	2	5	0	49	125
Drury College (Mo.)	4	4	0	0	175	12	Rolla School of Mines	12	10	1	1	253	27
Duke	1	1	0	0	28	7	San Antonio A.C. (Tex.)	1	1	0	0	29	0
Engineers (Columbia, Mo.)	1	1	0	0	90	0	Sedalia A.C. (Mo.)	2	2	0	0	54	6
Florida	1	1	0	0	20	18	Simpson College (Ia.)	5	3	2	0	65	29
Fordham	3	0	3	0	32	56	Southern California	1	0	1	0	7	20
Fort Riley (Kans.)	1	1	0	0	31	0	Southern Methodist	19	5	13	1	214	372
Georgia	1	0	1	0	0	14	Springfield Teachers (Mo.)	1	1	0	0	10	0
Georgia Tech	2	1	1	0	21	31	St. Louis U.	21	10	10	1	326	197
Great Lakes N.T.S.	1	0	1	0	0	17	Tarkio College (Mo.)	5	4	1	0	183	40
Grinnell	2	1	1	0	29	15	Temple	1	0	1	0	6	38
Haskell Indians (Kans.)	7	2	5	0	23	121	Texas A & M	2	0	2	0	0	40
Idaho	2	2	0	0	38	10	Texas	10	4	6	0	85	210
Illinois	5	3	2	0	99	68	Tulane	2	0	0	2	6	6
Indiana	2	2	0	0	34	21	U.C.L.A.	3	0	2	1	29	51
Iowa Navy Pre-Flight	3	1	2	0	20	72	U.S. Naval Academy	2	2	0	0	56	28
Iowa State	61	38	16	7	966	509	Utah	2	1	1	0	37	26
Iowa	12	7	5	0	152	138	Vanderbilt	4	2	1	1	57	25
Iowa Wesleyan	1	1	0	0	6	4	Warrensburg Teachers (Mo.)	9	8	1	0	186	30
Kansas City Medics	4	1	3	0	27	43	Washburn (Kans.)	4	2	2	0	64	30
Kansas State	54	37	13	4	1,057	476	Washington State	1	1	0	0	28	6
Kansas	77	36	32	9	922	899	Washington U. (Mo.)	38	25	11	2	556	270
Kansas City Y.M.C.A.	1	1	0	0	8	0	Wentworth Military (Mo.)	3	2	0	1	87	0
Kentucky (Lex.)	2	0	2	0	6	19	Westminster (Mo.)	2	2	0	0	118	0
Kentucky U.	1	1	0	0	37	6	West Virginia	2	2	0	0	40	0
Kirksville Osteopaths	2	1	1	0	18	22	William Jewell (Mo.)	5	5	0	0	161	6
Kirksville Teachers	4	3	1	0	41	30	Wisconsin	1	0	1	0	9	17
Monmouth (Ill.)	2	2	0	0	21	6		<u>701</u>	<u>384</u>	<u>272</u>	<u>45</u>	<u>10,704</u>	<u>8010</u>
Maryland	6	0	6	0	48	175							

# Year-by-Year Football Records 1890-1969

Year	Coach	Won	Lost	Tied	Points Scored	Points Against	Captain	Year	Coach	Won	Lost	Tied	Points Scored	Points Against	Captain
1890	A. L. McRae	2	1		112	34	W. R. Littell	1939	Don Faurot	8	2		155	79	K. Haas
1891	Hal Reid	3	1		108	28	C. Hill	1940	Don Faurot	6	3		213	125	J. Crocker
1892	E. H. Jones	1	2		28	13	D. L. Shawhan	1941	Don Faurot	8	2		226	39	D. Jenkins
1893	H. L. Robinson	4	3		148	126	C. E. Young	1942	Don Faurot	8	3	1	288	107	D. Reece
1894	H. L. Robinson	4	3		134	108	C. E. Young	1943	Chauncey Simpson	3	5		170	142	Game Capt.
1895	C. D. "Pop" Bliss	7	1		156	42	C. E. Young	1944	Chauncey Simpson	3	5	2	176	224	P. Collins
1896	Frank Patterson	7	5		250	78	T. R. Shawhan	1945	Chauncey Simpson	6	4		170	174	Game Capt.
1897	Charles Young	5	6		112	143	A. Hill	1946	Don Faurot	5	4	1	158	166	R. Stewart
1898	David L. Fultz	1	4		33	98	T. P. Howard	1947	Don Faurot	6	4		240	116	V. Abrams & R. Oakes
1899	David L. Fultz	9	2		242	56	J. Kramer	1948	Don Faurot	8	3		331	161	C. Fritz
1900	Fred Murphy	4	4	1	72	81	C. Kruse	1949	Don Faurot	7	4		264	225	B. Fuchs
1901	Fred Murphy	2	6	1	30	155	C. Washer	1950	Don Faurot	4	5	1	166	215	B. Ebinger & B. Marusic
1902	Pat O'Dea	5	3		99	80	T. M. Ellis								
1903	John F. McLean	1	7	1	46	83	A. Birney	1951	Don Faurot	3	7		169	292	B. Fuchs & L. Wren, Jr.
1904	John F. McLean	3	6		71	130	H. H. Haggard								
1905	John F. McLean	5	4		94	79	H. W. Anderson	1952	Don Faurot	5	5		147	159	B. Castle & B. Schoonmaker
1906	W. J. Monilaw	5	2	1	116	44	B. W. Tillman								
1907	W. J. Monilaw	7	2		278	41	E. L. Miller	1953	Don Faurot	6	4		130	116	L. Brown, C. Phillips & B. Schoonmaker
1908	W. J. Monilaw	6	2		196	45	E. L. Miller								
1909	William W. Roper	7	0	1	86	36	C. L. Ristine								
1910	W. Hollenbeck	4	2	2	77	17	F. B. Thacher	1954	Don Faurot	4	5	1	198	261	V. Eaton & C. Bull
1911	C. L. Brewer	2	4	2	61	67	G. B. Shuck								
1912	C. L. Brewer	5	3		135	69	C. P. Lemire	1955	Don Faurot	1	9		92	192	H. Burnine & T. Karakas
1913	C. L. Brewer	7	1		193	67	C. R. Wilson								
1914	H. F. Schulte	5	3		128	48	J. A. Clay	1956	Don Faurot	4	5	1	200	183	J. Hunter
1915	H. F. Schulte	2	5	1	72	102	J. Speelman	1957	Frank Broyles	5	4	1	149	157	K. Clemensen, D. Hopkins & M. Johnson
1916	H. F. Schulte	6	1	1	112	21	H. S. Lansing								
1917	H. F. Schulte	3	5		98	124	P. Hamilton								
1918	H. F. Schulte	No Varsity					H. Bass	1958	Dan Devine	5	4	1	164	141	D. Chadwick & C. Rash
1919	John F. Miller	5	1	2	91	42	A. Stankowski								
1920	John F. Miller & James Phelan	7	1		156	61	C. L. Lewis	1959	Dan Devine	6	5		125	124	M. Magac & T. Swaney
1921	James Phelan	6	2		136	50	H. Blumer	1960	Dan Devine	11	0		295	93	E. Mehrer, D. Smith & B. Wegener
1922	Thomas Kelly	5	3		98	90	H. Bunker								
1923	Gwinn Henry	2	3	3	31	40	C. Smith								
1924	Gwinn Henry	7	2		110	41	A. D. Bond	1961	Dan Devine	7	2	1	124	57	P. Henley
1925	Gwinn Henry	6	1	1	110	44	S. Whiteman	1962	Dan Devine	8	1	2	204	62	J. Wallach, T. Hertz & A. Russell
1926	Gwinn Henry	5	1	2	122	33	C. Bacchus								
1927	Gwinn Henry	7	2		129	90	G. Flamank	1963	Dan Devine	7	/3		151	86	P. Underhill & G. Oliver
1928	Gwinn Henry	4	4		138	102	M. Brown								
1929	Gwinn Henry	5	2	1	78	28	J. Waldorf	1964	Dan Devine						
1930	Gwinn Henry	2	5	2	41	132	L. McGirl	1965	Dan Devine	6	3	1	142	88	G. Otto
1931	Gwinn Henry	2	8		72	183	F. Bittner								
1932	Frank Carideo	1	7	1	32	184	K. Kerby								
1933	Frank Carideo	1	8		58	193	C. Schiele	1966	Dan Devine						
1934	Frank Carideo	0	8	1	25	172	H. Grenda								
1935	Don Faurot	3	3	3	97	77	C. Houston	1967	Dan Devine	6	3	1	121	116	J. Whitaker & B. Powell
1936	Don Faurot	6	2	1	107	74	A. Londe								
1937	Don Faurot	3	6	1	42	64	M. Kirk	1968	Dan Devine	7	3	0	134	76	G. Kombrink & J. Douglas
1938	Don Faurot	6	3		111	82	F. Dickenson & R. Moss								
										8	3	0	308	136	C. Garber
										9	1	0	362	181	Jon Staggers
										<u>393</u>	<u>273</u>	<u>45</u>	<u>11,066</u>	<u>8,191</u>	Sam Adams

# Year-by-Year Football Scores

(MISSOURI'S SCORES LISTED FIRST)

**1890**

(Coach A. L. McRae)	
22 Picked Team	6
0 Washington U.	28
90 Engineers	0

**1891**

(Coach Hal Reid)	
10 Kansas	22
8 K.C.Y.M.C.A.	0
36 Washburn	6
54 Drury	0

**1892**

(Coach E. H. Jones)	
24 Iowa	0
0 Nebraska	1*
4 Kansas	12
*Forfeit victory	

**1893**

(Coach H. L. Robinson)	
76 Mo. Valley	0
0 Baker	28
0 Denver A.C.	40
18 Nebraska	12
18 Iowa	30
24 Pastime A.C.	12
12 Kansas	4

**1894**

(Coach H. L. Robinson)	
44 Sedalia A.C.	6
0 Denver A.C.	26
18 Nebraska	14
0 Ottawa	28
32 Iowa	16
12 Kansas	18
28 Texas	0

**1895**

(Coach C. D. Bliss)	
10 Sedalia A.C.	0
16 Vanderbilt	0
16 Purdue	6
38 Depauw	0
10 Nebraska	12
22 Northwestern	18
34 Iowa	0
10 Kansas	6

**1896**

(Coach Frank Patterson)	
0 Iowa State	12
72 Tarkio (Mo.)	0
0 Illinois	10
4 Nebraska	8
26 Vanderbilt	6
0 Iowa	12
42 Wentworth M.A.	0
0 Kansas	30
28 Dallas A.C.	0
10 Texas	0
39 Austin Mutes	0
29 San Antonio	0

**1897**

(Coach Charles Young)	
10 Warrensburg	0
0 K.C. Medics	4
0 Warrensburg	10
6 Iowa Wesleyan	4
0 Nebraska	41
0 Tarkio (Mo.)	34
8 Amity	4
60 Westminster	0
12 Purdue	30
16 Christian B.C.	0
0 Kansas	16

**1898**

(Coach David L. Fultz)	
0 Wentworth M.A.	0
0 K.C. Medics	16
15 K.C. Medics	5
6 Nebraska	47
12 Washington U.	18
0 Kansas	12

**1899**

(Coach David L. Fultz)	
21 Warrensburg	0
45 Wentworth M.A.	0
17 Haskell Inst.	0
11 Nebraska	0
23 Tarkio (Mo.)	0
18 Amity	0
29 Christian B.C.	0
0 Drake	11
39 Mo. Valley	0
33 Washington U.	11
6 Kansas	34

**1900**

(Coach Fred Murphy)	
13 Osteopaths	0
0 Haskell Inst.	11
11 Warrensburg	6
12 K.C. Medics	18
6 Washington U.	5
12 Rolla Miners	5
0 Nebraska	12
12 Texas	18
6 Kansas	6

**1901**

(Coach Fred Murphy)	
5 Osteopaths	22
0 Simpson College	11
1 Warrensburg	0*
0 Drake	24
6 Ottawa	6
0 Nebraska	51
0 Texas	10
0 Haskell Inst.	19
18 Kansas	12
*Forfeit victory	

**1902**

(Coach Pat O'Dea)	
11 Simpson College	6
0 Haskell Inst.	40
0 Nebraska	12
28 Washburn	0
27 Washington U.	0
22 Oklahoma	5
6 Iowa	0
5 Kansas	17

**1903**

(Coach John F. McLean)	
40 Rolla Miners	0
6 Grinnell	15
0 Drake	17
0 Simpson	12
0 Haskell	12
0 Washington U.	0
0 Iowa	16
0 Washburn	6
0 Kansas	5

**1904**

(Coach John F. McLean)	
6 Kirksville	0
28 Simpson College	0
0 Haskell Inst.	39
37 Kentucky	6
0 Purdue	11
0 Washington U.	10
0 St. Louis U.	17
0 Washburn	18
0 Kansas	29

**1905**

(Coach John F. McLean)	
6 Kirksville	0
26 Simpson College	0
28 Rolla Miners	0
6 Haskell Inst.	0
18 Tarkio (Mo.)	0
0 Purdue	24
0 St. Louis U.	17
10 Washington U.	14
0 Kansas	24

**1906**

(Coach W. J. Monilaw)	
23 Kirksville	4
41 Warrensburg	2
26 Rolla Miners	0
11 Drury	0
4 Iowa	26
11 Arkansas	0
0 Washington U.	12
0 Kansas	0

**1907**

(Coach W. J. Monilaw)	
39 Central College	0
46 Central College	0
38 Warrensburg	6
6 Iowa	21
47 Wm. Jewell	0
5 Texas	4
70 Tarkio (Mo.)	6
27 Washington U.	0
0 Kansas	4

**1908**

(Coach W. J. Monilaw)	
57 Warrensburg	6
16 Rolla Miners	0
10 Iowa	5
58 Westminster	0
0 Iowa State	16
11 Drake	8
40 Washington U.	0
4 Kansas	10

<b>1909</b>	(Coach William W. Roper)		<b>1914</b>	(Coach H. F. Schulte)		<b>1919</b>	(Coach J. F. Miller)		<b>1924</b>	(Coach Gwinn Henry)	
12	Monmouth	6	0	Rolla Miners	9	41	Drury	12	3	Chicago U.	0
3	Kansas State	0	46	Wm. Jewell	0	6	Kansas State	6	14	Mo. Wesleyan	0
13	Rolla	0	0	Oklahoma	13	10	Iowa State	0	7	Iowa State	0
6	Iowa State	6	0	Iowa State	6	3	Drake	0	14	Kansas State	7
13	Iowa	12	13	Kansas State	3	6	Oklahoma	6	6	Nebraska	14
5	Washington U.	0	33	Drake	7	5	Nebraska	12	10	Oklahoma	0
22	Drake	6	26	Washington U.	3	7	Washington U.	0	35	Washington U.	0
12	Kansas	6	10	Kansas	7	13	Kansas	6	14	Kansas	0
									7	So. California	20
<b>1910</b>	(Coach W. Hollenbeck)		<b>1915</b>	(Coach H. F. Schulte)		<b>1920</b>	(Coach John F. Miller & James Phelan)		<b>1925</b>	(Coach Gwinn Henry)	
9	Monmouth	0	13	Oklahoma A & M	6	41	Missouri Wesleyan	0	6	Tulane	6
0	Rolla	0	0	Washington U.	13	44	St. Louis U.	0	9	Nebraska	6
5	Iowa	0	0	Oklahoma	24	14	Iowa State	2	32	Rolla	0
5	Iowa State	6	6	Iowa State	14	10	Drake	7	3	Kansas State	0
26	Oklahoma	0	6	Kansas State	0	7	Oklahoma	28	23	Iowa State	8
0	St. Louis U.	3	6	Northwestern	24	10	Kansas State	7	14	Washington U.	0
27	Washington U.	3	41	Drake	13	14	Washington U.	10	16	Oklahoma	14
5	Kansas	5	6	Kansas	8	16	Kansas	7	7	Kansas	10
<b>1911</b>	(Coach C. L. Brewer)		<b>1916</b>	(Coach H. F. Schulte)		<b>1921</b>	(Coach James Phelan)		<b>1926</b>	(Coach Gwinn Henry)	
15	Wm. Jewell	0	40	Central College	0	36	Oklahoma A & M	0	0	Tulane	0
29	Rolla	0	13	Washington U.	0	32	St. Louis U.	0	14	Nebraska	7
5	Washington U.	5	0	Iowa State	0	17	Iowa State	14	7	So. Methodist	7
0	Nebraska	34	23	Oklahoma	14	5	Kansas State	7	7	Iowa State	3
0	St. Louis U.	5	3	Texas	0	6	Drake	0	27	West Virginia	0
6	Oklahoma	14	6	Kansas State	7	7	Washington U.	0	7	Oklahoma	10
3	Iowa State	6	14	Drake	0	24	Oklahoma	14	45	Washington U.	6
3	Kansas	3	13	Kansas	0	9	Kansas	15	15	Kansas	0
<b>1912</b>	(Coach C. L. Brewer)		<b>1917</b>	(Coach H. F. Schulte)		<b>1922</b>	(Coach Thomas Kelly)		<b>1927</b>	(Coach Gwinn Henry)	
55	Central College	7	14	Wm. Jewell	6	23	Grinnell	0	13	Kansas State	6
13	Rolla	0	6	Kansas State	7	6	Iowa State	3	7	Nebraska	6
0	Iowa State	29	7	Oklahoma	14	0	Nebraska	48	13	Washington U.	0
14	Oklahoma	0	0	Nebraska	52	9	St. Louis U.	0	9	So. Methodist	32
0	Nebraska	7	19	Washington U.	3	10	Kansas State	14	34	Northwestern U.	19
17	Drake	14	0	Iowa State	15	14	Oklahoma	18	13	West Virginia	0
33	Washington U.	0	49	Drake	0	27	Washington U.	0	13	Iowa State	6
3	Kansas	12	3	Kansas	27	9	Kansas	7	7	Kansas	14
<b>1913</b>	(Coach C. L. Brewer)		<b>1918</b>	No team organized on account of World War.		<b>1923</b>	(Coach Gwinn Henry)		<b>1928</b>	(Coach Gwinn Henry)	
69	Drury	0				10	Springfield Teachers	0	60	Center	0
7	Illinois	24				0	Iowa State	2	28	Iowa State	19
20	Oklahoma	17				0	St. Louis U.	0	0	Nebraska	24
21	Iowa State	13				7	Nebraska	7	0	Drake	6
44	Rolla	13				4	Kansas State	2	19	Kansas State	6
10	Drake	0				0	Oklahoma	13	6	New York U.	27
19	Washington U.	0				7	Washington U.	13	25	Kansas	6
3	Kansas	0				3	Kansas	3	0	Oklahoma	14

<b>1929</b> (Coach Gwinn Henry)		<b>1933</b> (Coach Frank Carideo)		<b>1937</b> (Coach Don Faurot)		<b>1941</b> (Coach Don Faurot)	
19 Iowa State	0	31 Central College	0	6 Colorado	14	7 Ohio State	12
20 Drake	0	6 Kirksville	26	14 Kansas State	7	21 Colorado	6
7 Nebraska	7	0 Kansas State	33	0 Michigan State	2	35 Kansas State	0
6 Kansas State	7	7 St. Louis U.	13	0 Nebraska	7	39 Iowa State	13
6 Washington U.	0	7 Iowa State	14	12 Iowa State	0	6 Nebraska	0
0 New York U.	14	0 Nebraska	26	7 St. Louis U.	14	19 Michigan State	0
7 Kansas	0	0 Oklahoma	21	0 Oklahoma	7	26 New York U.	0
13 Oklahoma	0	7 Washington U.	33	3 Washington U.	0	28 Oklahoma	0
		0 Kansas	27	0 Kansas	0	45 Kansas	6
				0 U.C.L.A.	13	Sugar Bowl	
<b>1930</b> (Coach Gwinn Henry)		<b>1934</b> (Coach Frank Carideo)		<b>1938</b> (Coach Don Faurot)		0 Fordham	2
0 Colorado	9	0 Colorado	0	14 Colorado	7	<b>1942</b> (Coach Don Faurot)	
0 St. Louis U.	20	0 Iowa State	13	13 Kansas State	21	31 Ft. Riley	0
0 New York U.	38	0 St. Louis U.	7	13 Iowa State	16	38 St. Louis U.	7
14 Drake	13	6 Chicago U.	19	13 Washington U.	0	26 Colorado	13
13 Kansas State	20	0 Oklahoma	31	13 Nebraska	10	9 Wisconsin	17
14 Iowa State	0	0 Kansas State	29	6 Michigan State	0	45 Iowa State	6
0 Nebraska	0	13 Washington U.	40	0 Oklahoma	21	0 Great Lakes NTS	17
0 Kansas	32	6 Nebraska	13	26 St. Louis U.	0	26 Nebraska	6
0 Oklahoma	0	0 Kansas	20	13 Kansas	7	6 Oklahoma	6
						12 Fordham	20
<b>1931</b> (Coach Gwinn Henry)		<b>1935</b> (Coach Don Faurot)		<b>1939</b> (Coach Don Faurot)		42 Kansas	13
0 Texas	31	39 Wm. Jewell	0	30 Colorado	0	46 Kansas State	2
7 Kansas State	20	7 Warrensburg	0	0 Ohio State	19	7 Iowa Navy P-F	0
7 Colorado	9	20 Colorado	6	14 Washington U.	0	<b>1943</b> (Coach Chauncey Simpson)	
0 Iowa State	20	6 Iowa State	6	9 Kansas State	7	13 Minnesota	26
7 Nebraska	10	6 Nebraska	19	21 Iowa State	6	6 Ohio State	27
32 Drake	20	6 Oklahoma	20	27 Nebraska	13	47 Kansas State	14
7 Oklahoma	0	6 Washington U.	19	20 New York U.	7	6 Iowa Navy P-F	21
0 Kansas	14	7 Kansas State	7	7 Oklahoma	6	54 Nebraska	20
6 Temple	38	0 Kansas	0	20 Kansas	0	25 Iowa State	7
6 St. Louis U.	21			Orange Bowl		13 Oklahoma	20
				7 Georgia Tech	21	6 Kansas	7
<b>1932</b> (Coach Frank Carideo)		<b>1936</b> (Coach Don Faurot)		<b>1940</b> (Coach Don Faurot)		<b>1944</b> (Coach Chauncey Simpson)	
0 Northwestern	27	20 Cape Girardeau	0	40 St. Louis U.	26	6 Arkansas	7
0 Texas	65	7 Kansas State	7	13 Pittsburgh	19	0 Ohio State	54
0 Kansas State	25	0 Michigan State	13	24 Kansas State	13	33 Kansas State	0
0 Iowa State	0	10 Iowa State	0	30 Iowa State	14	27 Minnesota	39
6 Washington U.	14	0 Nebraska	20	7 Nebraska	20	20 Nebraska	24
14 Oklahoma	6	13 St. Louis U.	7	33 New York U.	0	21 Iowa State	21
6 Nebraska	21	21 Oklahoma	14	21 Colorado	6	13 Michigan State	7
6 St. Louis U.	19	17 Washington U.	10	0 Oklahoma	7	21 Oklahoma	21
0 Kansas	7	19 Kansas	3	45 Kansas	20	7 Iowa Navy P-F	51
						28 Kansas	0



<b>1945</b>		<b>1949</b>		<b>1953</b>		<b>1957</b>	
(Coach Chauncey Simpson)		(Coach Don Faurot)		(Coach Don Faurot)		(Coach Frank Broyles)	
0 Minnesota	34	34 Ohio State	35	6 Maryland	20	7 Vanderbilt	7
6 Ohio State	47	27 So. Methodist	28	14 Purdue	7	35 Arizona	13
10 So. Methodist	7	21 Oklahoma A & M	7	27 Colorado	16	0 Texas A & M	28
13 Iowa State	7	27 Illinois	20	7 So. Methodist	20	7 So. Methodist	6
41 Kansas State	7	32 Iowa State	0	6 Iowa State	13	35 Iowa State	13
19 Nebraska	0	21 Nebraska	20	23 Nebraska	7	14 Nebraska	13
7 Michigan State	14	20 Colorado	13	14 Indiana	7	9 Colorado	6
14 Oklahoma	6	7 Oklahoma	27	7 Oklahoma	14	14 Oklahoma	39
33 Kansas	12	34 Kansas	28	10 Kansas	6	21 Kansas State	23
Cotton Bowl		34 Kansas State	27	16 Kansas State	6	7 Kansas	9
27 Texas	40	Gator Bowl					
		7 Maryland	20	<b>1954</b>		<b>1958</b>	
<b>1946</b>		<b>1950</b>		(Coach Don Faurot)		(Coach Dan Devine)	
(Coach Don Faurot)		(Coach Don Faurot)		0 Purdue	31	8 Vanderbilt	12
0 Texas	42	0 Clemson	34	35 Kansas State	7	14 Idaho	10
13 Ohio State	13	0 So. Methodist	21	6 So. Methodist	25	0 Texas A & M	12
19 St. Louis	14	28 Kansas State	7	20 Indiana	14	19 So. Methodist	32
26 Kansas State	0	20 Iowa State	20	32 Iowa State	14	32 Kansas State	8
33 Iowa State	13	27 Oklahoma A & M	0	19 Nebraska	25	14 Iowa State	6
0 So. Methodist	17	34 Nebraska	40	19 Colorado	19	31 Nebraska	0
21 Nebraska	20	21 Colorado	19	13 Oklahoma	34	33 Colorado	9
21 Colorado	0	7 Oklahoma	41	41 Kansas	18	0 Oklahoma	39
6 Oklahoma	27	20 Kansas	6	13 Maryland	74	13 Kansas	13
19 Kansas	20	9 Miami (Fla.)	27				
<b>1947</b>		<b>1951</b>		<b>1955</b>		<b>1959</b>	
(Coach Don Faurot)		(Coach Don Faurot)		(Coach Don Faurot)		(Coach Dan Devine)	
19 St. Louis	0	20 Fordham	34	12 Maryland	13	8 Penn State	19
7 Ohio State	13	27 Oklahoma A & M	26	7 Michigan	42	20 Michigan	15
19 Southern Methodist	35	0 So. Methodist	34	14 Utah	20	14 Iowa State	0
21 Colorado	0	13 Colorado	34	6 So. Methodist	13	2 So. Methodist	23
47 Kansas State	7	14 Iowa State	21	14 Iowa State	20	0 Oklahoma	23
26 Iowa State	7	35 Nebraska	19	12 Nebraska	18	9 Nebraska	0
47 Nebraska	6	0 Maryland	35	20 Colorado	12	20 Colorado	21
28 Duke	7	20 Oklahoma	34	0 Oklahoma	20	13 Air Force	0
12 Oklahoma	21	12 Kansas State	14*	0 Kansas State	21	26 Kansas State	0
14 Kansas	20	28 Kansas	41	7 Kansas	13	13 Kansas	9
		*Forfeit victory for M.U.				Orange Bowl	
<b>1948</b>		<b>1952</b>		<b>1956</b>		0 Georgia	14
(Coach Don Faurot)		(Coach Don Faurot)		(Coach Don Faurot)			
7 Ohio State	21	10 Maryland	13	13 Oregon State	19	<b>1960</b>	
60 St. Louis	7	14 California	28	7 Purdue	16	(Coach Dan Devine)	
20 So. Methodist	14	26 Kansas State	0	27 So. Methodist	33	20 So. Methodist	0
35 Navy	14	7 So. Methodist	25	42 No. Dakota State	0	28 Oklahoma State	7
49 Iowa State	7	7 Oklahoma A & M	14	20 Kansas State	6	21 Penn State	8
49 Kansas State	7	19 Iowa State	0	34 Iowa State	0	34 Air Force	8
7 Oklahoma	41	10 Nebraska	6	14 Nebraska	15	45 Kansas State	0
27 Colorado	13	27 Colorado	7	14 Colorado	14	34 Iowa State	8
33 Nebraska	6	7 Oklahoma	47	14 Oklahoma	67	28 Nebraska	0
21 Kansas	7	20 Kansas	19	15 Kansas	13	16 Colorado	6
Gator Bowl						41 Oklahoma	19
23 Clemson	24					*7 Kansas	23
						Orange Bowl	
						21 Navy	14
						*Forfeit victory	

<b>1961</b> (Coach Dan Devine)		<b>1963</b> (Coach Dan Devine)		<b>1965</b> (Coach Dan Devine)		<b>1967</b> (Coach Dan Devine)	
28 Washington State	6	12 Northwestern	23	0 Kentucky (Lex.)	7	21 So. Methodist	0
6 Minnesota	0	7 Arkansas	6	13 Oklahoma State	0	13 Northwestern	6
14 California	14	24 Idaho	0	17 Minnesota	6	17 Arizona	3
10 Oklahoma State	0	21 Kansas State	11	28 Kansas State	6	9 Colorado	23
13 Iowa State	7	28 Oklahoma State	6	14 UCLA	14	23 Iowa State	7
10 Nebraska	0	7 Iowa State	0	23 Iowa State	7	0 Oklahoma	7
6 Colorado	7	12 Nebraska	13	14 Nebraska	16	7 Oklahoma State	0
0 Oklahoma	7	28 Colorado	7	20 Colorado	7	28 Kansas State	6
27 Kansas State	9	3 Oklahoma	13	30 Oklahoma	0	10 Nebraska	7
10 Kansas	7	9 Kansas	7	44 Kansas	20	6 Kansas	17
				Sugar Bowl			
<b>1962</b> (Coach Dan Devine)		<b>1964</b> (Coach Dan Devine)		20 Florida	18	<b>1968</b> (Coach Dan Devine)	
21 California	10	14 California	21	<b>1966</b> (Coach Dan Devine)		6 Kentucky	12
0 Minnesota	0	23 Utah	6	24 Minnesota	0	44 Illinois	0
17 Arizona	7	7 Oklahoma State	10	21 Illinois	14	7 Army	3
32 Kansas State	0	7 Kansas State	0	15 UCLA	24	27 Colorado	14
23 Oklahoma State	6	17 Air Forcé	7	27 Kansas State	0	16 Nebraska	14
21 Iowa State	6	10 Iowa State	0	7 Oklahoma State	0	56 Kansas State	20
16 Nebraska	7	0 Nebraska	9	10 Iowa State	10	42 Oklahoma State	7
57 Colorado	0	16 Colorado	7	0 Nebraska	35	42 Iowa State	7
0 Oklahoma	13	14 Oklahoma	14	0 Colorado	26	14 Oklahoma	28
3 Kansas	3	34 Kansas	14	10 Oklahoma	7	19 Kansas	21
Bluebonnet Bowl				7 Kansas	0	Gator Bowl	
14 Georgia Tech	10					35 Alabama	10

## Former Tiger Players in Professional Football

(All Caps Indicate  
Active Players)

Carpenter, John . . . . . Tackle—1947-49 Buffalo Bills;  
1949 San Francisco 49ers

Christman, Paul . . . . . Back—1945-49 Chicago Cardinals;  
1950 Green Bay Packers

Collins, Paul . . . . . Back—1954 Chicago Cardinals

DENNY, EARL . . . . . Halfback—1967-69 Minnesota Vikings

Eaton, Vic . . . . . Back—1955 Pittsburgh Steelers

Gladden, J. Mack . . . . . End—1934 Chicago Gunners

Greenwood, Don . . . . . Back—1945 Cleveland Rams; 1946-47 Cleveland

Hitchler, Conrad . . . . . End—1963-65 Calgary Stampeders

Jeffries, Robert . . . . . Guard—1942-43 Brooklyn

JONES, CURTIS . . . . . Tackle—1968-69 San Diego Chargers

Kekeris, James . . . . . Tackle—1947 Philadelphia Eagles;  
1948 Green Bay Packers

Lane, Gary . . . . . Back—1966-68 Cleveland Browns,  
1968 New York Giants

LaRose, Danny . . . . . Tackle—1961-63 Detroit Lions;  
1964-66 Pittsburgh Steelers; 1966 Denver Broncos;  
1967 Miami Dolphins

Lochner, Art . . . . . Back—1937 Brooklyn; 1938 Rochester  
 McGirl, Leonard . . . . . Guard—1931-32 Philadelphia;  
 1933 Chicago Cardinals; 1934 St. Louis  
 Magac, Mike . . . . . Tackle—1960-65 San Francisco 49ers;  
 1965-67 Pittsburgh  
 Morton, James . . End—1945 Chicago Bears; 1946 Los Angeles Dons;  
 1947 Buffalo  
 OTTO, GUS . . . . . Fullback—1965-69 Oakland Raiders  
 PEAY, FRANCIS . . . . . Tackle—1966-67 New York Giants;  
 1968-69 Green Bay  
 Pepper, Eugene . . . . . Guard—1950-53 Washington Redskins;  
 1954 Philadelphia and Baltimore  
 Quirk, Edward . . . . . Back—1948-51 Washington Redskins  
 ROLAND, JOHNNY . . . . . Back—1966-69 St. Louis Cardinals  
 Rouse, Stillman . . . . . End—1940 Detroit Lions  
 Rowekamp, Bill . . . . . End—1956 Edmonton Eskimos  
 RUSSELL, ANDY . . . . . Back—1963; 1966-69 Pittsburgh Steelers  
 SEALS, GEORGE . . . . . End—1964-65 Washington Redskins;  
 1965-69 Chicago Bears  
 Shurnas, Marshall . . . . . End—1947 Cleveland Browns  
 Siekierski, Bill . . . . . Tackle—1963-65 Ottawa Rough Riders  
 Smith, Gordon . . . . . End—1961-65 Minnesota Vikings  
 Smith, Roy . . . . . Center—1933 Philadelphia  
 Steuber, Bob . . Back—1943 Chicago Bears; 1946 Cleveland Browns;  
 1947 Los Angeles Dons; 1948 Buffalo  
 Stevenson, Norris . . . . . Back—1962-63 Edmonton Eskimos  
 Stewart, Ralph . . . . . Center—1947-48 New York Yankees;  
 1948 Baltimore Colts  
 Tobin, Bill . . Back—1963 Houston Oilers; 1964-65 Edmonton Eskimos  
 Travis, J. Edward . . . . . Tackle—1921 Rock Island; 1923 St. Louis  
 VAN DYKE, BRUCE . . . . . Tackle—1966 Philadelphia Eagles;  
 1967-69 Pittsburgh Steelers  
 Van Dyne, Charles . . . . . Tackle—1925 Buffalo  
 Volz, Wilbur . . . . . Back—1949 Buffalo  
 WASHINGTON, RUSS . . . . . Tackle/End—1968-69 San Diego Chargers  
 Wegener, Bill . . . . . Tackle—1962-63 Houston Oilers  
 WEHRLI, ROGER . . . . . Back—1969 St. Louis Cardinals  
 West, Mel . . Back—1961 Boston Patriots; 1961-62 New York Titans  
 Wren, Junior . . . . . Back—1956-58 Cleveland Browns;  
 1959-60 Pittsburgh Steelers

# SID's for 1969

## Opponents

AIR FORCE		
Hal Bateman		472-2313
ILLINOIS		
Charles Bellatti		217-333-1390
MICHIGAN		
Will Perry		313-663-2441
NEBRASKA		
Don Bryant		402-472-2263
OKLA. STATE		
Pat Quinn		405-372-6211
COLORADO		
Mike Moran	303-433-2211	Ext. 6128
KANS. STATE		
Dev Nelson		913-532-6574
OKLAHOMA		
Johnny Keith		405-325-3751
IOWA STATE		
Harry Burrell		515-294-3372
KANSAS		
Jay Simon		913-864-3417

# Conference Football Champions

Year	Team	BIG SIX				Coach	BIG SEVEN						
		W	L	T	Pct.		W	L	T	Pct.			
1928	Nebraska	5	0	0	1.000	Ernest Bearg	1948	Oklahoma	5	0	0	1.000	Bud Wilkinson
1929	Nebraska	3	0	2	1.000	Dana Bible	1949	Oklahoma	5	0	0	1.000	Bud Wilkinson
1930	Kansas	4	1	0	.800	Bill Hargiss	1950	Oklahoma	6	0	0	1.000	Bud Wilkinson
1931	Nebraska	5	0	0	1.000	Dana Bible	1951	Oklahoma	6	0	0	1.000	Bud Wilkinson
1932	Nebraska	5	0	0	1.000	Dana Bible	1952	Oklahoma	5	0	1	.916	Bud Wilkinson
1933	Nebraska	5	0	0	1.000	Dana Bible	1953	Oklahoma	6	0	0	1.000	Bud Wilkinson
1934	Kans. State	5	0	0	1.000	Lynn Waldorf	1954	Oklahoma	6	0	0	1.000	Bud Wilkinson
1935	Nebraska	4	0	1	.900*	Dana Bible	1955	Oklahoma	6	0	0	1.000	Bud Wilkinson
1936	Nebraska	5	0	0	1.000	Dana Bible	1956	Oklahoma	6	0	0	1.000	Bud Wilkinson
1937	Nebraska	3	0	2	.800	L. M. "Biff" Jones	1957	Oklahoma	6	0	0	1.000	Bud Wilkinson
1938	Oklahoma	5	0	0	1.000	Tom Stidham	1958	Oklahoma	6	0	0	1.000	Bud Wilkinson
1939	Missouri	5	0	0	1.000	Don Faurot	1959	Oklahoma	5	1	0	.833	Bud Wilkinson
1940	Nebraska	5	0	0	1.000	L. M. "Biff" Jones							
1941	Missouri	5	0	0	1.000	Don Faurot							
1942	Missouri	4	0	1	.900	Don Faurot	1960	Missouri	7	0	0	1.000	Dan Devine
1943	Oklahoma	5	0	0	1.000	Dewey Luster	1961	Colorado	7	0	0	1.000	Sonny Grandelius
1944	Oklahoma	4	0	0	1.000	Dewey Luster	1962	Oklahoma	7	0	0	1.000	Bud Wilkinson
1945	Missouri	5	0	0	1.000	Chauncey Simpson	1963	Nebraska	7	0	0	1.000	Bob Devaney
1946	Oklahoma	4	1	0	.800	Jim Tatum	1964	Nebraska	6	1	0	.857	Bob Devaney
	Kansas	4	1	1	.800	George Sauer	1965	Nebraska	7	0	0	1.000	Bob Devaney
1947	Oklahoma	4	0	1	.900	Bud Wilkinson	1966	Nebraska	6	1	0	.857	Bob Devaney
	Kansas	4	0	1	.900	George Sauer	1967	Oklahoma	7	0	0	1.000	Chuck Fairbanks
							1968	Kansas	6	1	0	.857	Pepper Rodgers
								Oklahoma	6	1	0	.857	Chuck Fairbanks

\*Tie games went into the record as 1/2 game won and 1/2 game lost.

## *I'm from Missouri...*

Missouri's distinctive designation—the "Show-Me State"—originated some 70 years ago.

At a naval banquet in Philadelphia in 1899, Congressman Willard Duncan Vandiver reputedly turned the phrase that has come to be associated with Missouri. Mr. Vandiver, a Columbia, Mo. native and then a member of the House Committee on Naval Affairs, said in a speech:

"I come from a State that raises corn and cotton and cockle-burrs and Democrats, and frothy eloquence neither convinces nor satisfies me. I am from Missouri. You have got to show me."

## *'Nine'—It Was a Very Good Year*

There's a good-luck harbinger in Mizzou's 1969 football outlook.

Going back to 1899, and on every subsequent ten-year anniversary, all Tiger teams have been winners—and three (1939, 1949, 1959) received bowl invitations.

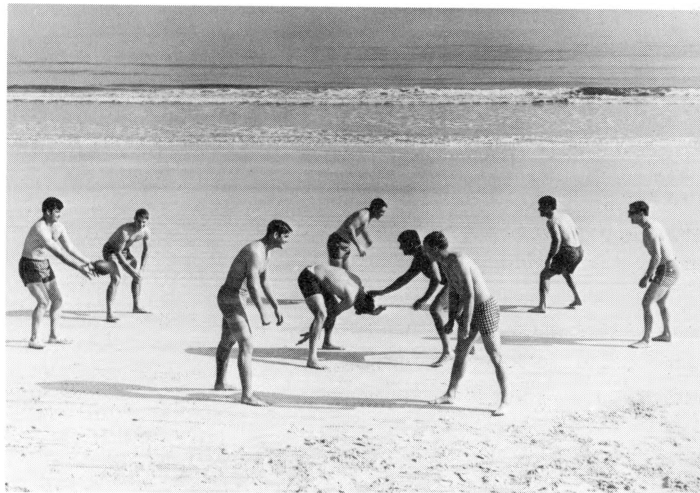
The 1909 team (7-0-1) was the only undefeated squad in Mizzou's annals, until a conference ruling erased the lone 23-7 loss to Kansas in 1960, for using an ineligible player, and revised the M.U. record to 10-0.

The composite won-lost-tied mark of all Black and Gold football teams for the years ending in "9" is 47-16-4.

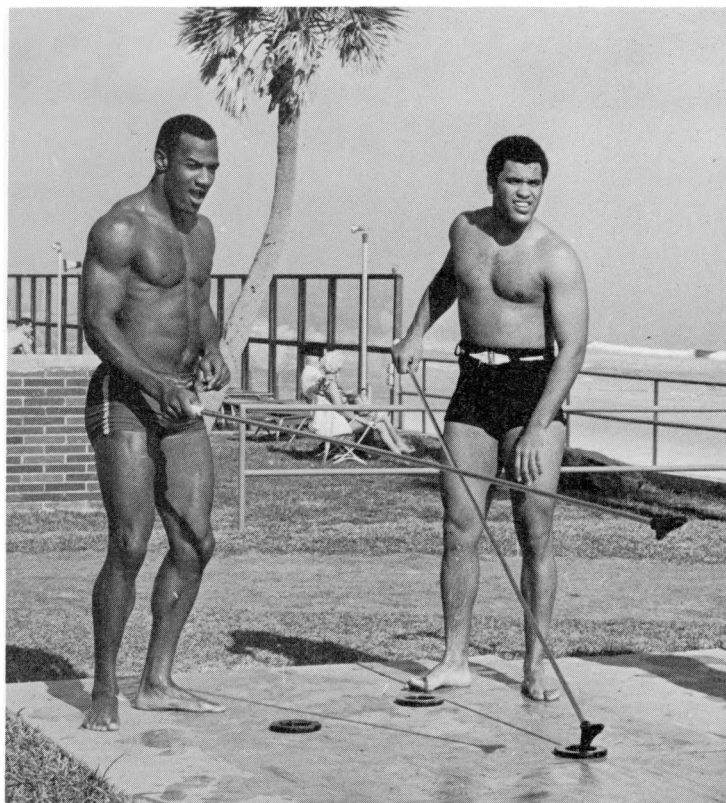


Arrival at Daytona Beach . . .

## AT THE 'GATOR BOWL



An unsupervised workout . . .



Beauteous pre-battle smiles . . .



'Twas a most unusual day . . .



# 1969 Freshman Football Roster

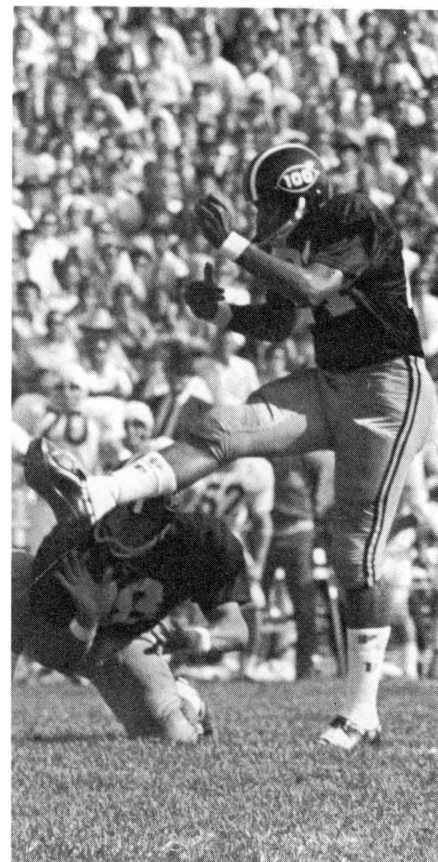
NAME	POS.	HT.	WT.	HOMETOWN
Adcox, Jay	T	6-0	225	Knob Noster
Anderson, Scott	E	6-3	200	Hannibal
Austin, Dave	QB	5-11	180	Joplin
Bastable, Jack	HB	5-11	190	Arlington, Ill.
Bentley, Jim	QB	5-10	215	Fayette
Caldwell, Frank	E	6-1	200	Shelbina
Campbell, John	HB	6-0	194	St. Louis (Roosevelt)
Clark, Mark	G	6-1	205	Belleville, Ill.
Colclasure, Bill	E	6-3	210	Wood River, Ill.
Curbow, Kelly	T	6-5	225	Monett
Egbert, Les	HB	6-0	185	Clinton
Frost, Larry	FB	6-2	198	St. Louis (Normandy)
Henderson, Scott	C	6-1	225	Kansas City (Oak Park)
Horton, Tom	T	6-4	200	Bartlesville, Okla.
Howard, John	HB	6-2	195	Seneca
Jaskowiak, Dennis	T	6-3	220	Manchester (Parkway)
Jeffries, Mike	QB	6-4	220	Alton, Ill.
Kellett, Tom	LB	6-0	188	St. Louis (U-High)
Kirley, Chris	T	6-4	215	Peoria, Ill.
Larison, Bob	HB	5-10	185	Weston
McDonough, Dan	LB	6-1	190	Belton
McMurry, Charles	E	6-4½	200	Jefferson City
Mueller, Mark	HB	5-10	185	St. Louis (Cleveland)
Nelson, Scott	HB	6-0	190	Evergreen, Colo.
Nerling, Dan	LB	5-10	200	Independence (Wm.C.)
O'Neal, Skip	T	6-3	200	Berkeley
Pankey, Bob	QB	6-1	185	Carbondale, Ill.
Paulsen, Joe	E	6-3½	183	St. Louis (Riverview)
Ramirez, Pete	C	5-11	210	San Antonio, Tex.
Ross, Fred	LB	6-2	220	E. Orange, N.J.
Roth, Bill	E	6-3	175	Lakewood, Colo.
Saitz, Dan	E	5-10	220	St. Louis (Mehlville)
Schnietz, Jim	T	6-4½	219	St. Louis (CBC)
Schnur, Craig	E	6-3	200	Excelsior, Minn.
Schrier, Ken	HB	6-1	188	Shipman, Ill.
Sodergren, Scott	C	6-0	195	Jefferson City
Swinger, Mike	C	6-2½	215	Eureka
Tessendorf, Irl	T	6-1	210	Junction City
Ware, Jay	QB	6-0	180	Pleasant Hill
Weber, Randy	E	6-2	186	Raytown
Yanko, Roger	HB	5-11	192	St. Louis (McBride)

## Tigers' Freshman Football Schedule

FRI.	OCTOBER	10	NEBRASKA	COLUMBIA
Fri.	October	24	Kansas	Lawrence
FRI.	OCTOBER	31	KANSAS STATE	COLUMBIA
Fri.	November	14	Iowa State	Ames

## HIGH SCHOOL COACH

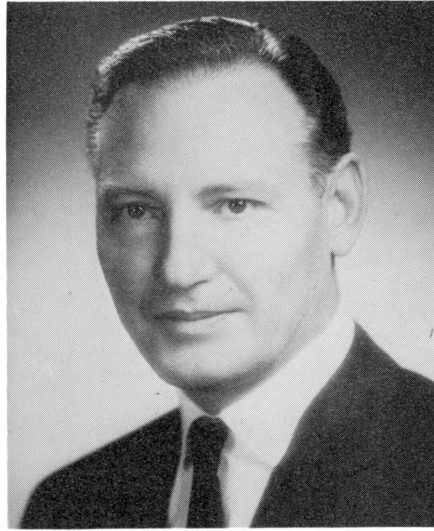
Don Bruns  
 Charles Wade  
 Charles Cooper  
 Jack Lilgeberg  
 William Zimmerman  
 Randel Lukehart  
 George Osteroff  
 Bob Samples  
 Wayne Williams  
 Burl Fowler  
 Allen Ritchie  
 Bob Myers  
 Gladden Dye  
 Don Derrick  
 Pat Lawson  
 Jack Wells  
 Ed Yongus  
 Paul Martel  
 Dick Jamieson  
 Walter Olinger  
 Robin Hicklin  
 Pete Adkins  
 Ray Cliffe  
 Earl Painter  
 Ron Bruch  
 Don Kincaid  
 Verne Pollock  
 Gerald Nordman  
 Weldon Forren  
 Tom Dean  
 Tom Hancock  
 Rodger Estes  
 Bill Gerdemann  
 Walt West  
 Charles Stone  
 Pete Adkins  
 Mel Maharrey  
 Al Sempler  
 Charles Harris  
 Ted Chittwood  
 Bob Goodwin



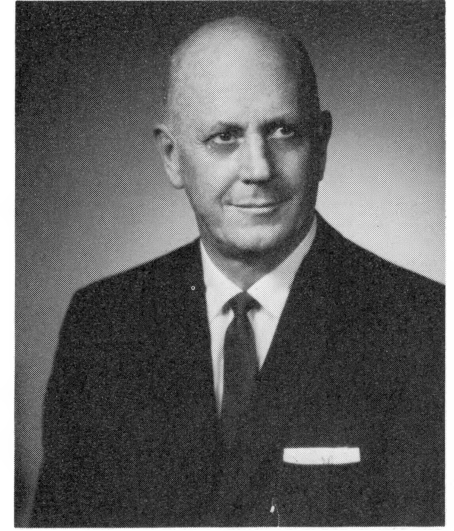




**Dr. John C. Weaver**  
President  
University of Missouri



**Dr. John W. Schwada**  
Chancellor  
University of Missouri



**Dean Arthur W. Nebel**  
Chairman  
Committee on  
Intercollegiate Athletics

## University of Missouri

The University of Missouri, oldest state university west of the Mississippi, is the nerve-center of a four-campus system with branches located in Columbia—original seat of the University, founded in 1839—Rolla, Kansas City and St. Louis.

Dr. John C. Weaver, formerly of the Ohio State faculty, starts his fourth year as the University's President. On the Columbia Campus, Dr. John W. Schwada is Chancellor—beginning his sixth year in that position after having served as Dean of Faculties.

Last year, the University of Missouri had almost 40,000 students on its four campuses. In full-time enrollment, Mizzou at Columbia ranks 13th among the nation's colleges and universities.

Contributing to the "new era" at the University is the activation of a Nuclear Research Reactor, and completion of a Livestock Pavilion. The world-renowned School

of Journalism, founded in 1908, is the pioneer in its field. The University Library is recognized as one of the finest research libraries in the nation. All three are located on the Columbia campus. In the field of scientific research, Vitamin B-12 was first discovered by a staff member of the University of Missouri. Also, the drug aureomycin was first found in a soil sample from the University's experimental field.

Sixteen different divisions of the University are accommodated on the Columbia campus: the College of Agriculture; College of Arts and Science; College of Education; College of Engineering; School of Business and Public Administration; School of Forestry; School of Home Economics; School of Journalism; School of Library and Informational Science; School of Law; School of Medicine; School of Nursing; School of Social and Community Service; School of Veterinary Medicine; University Extension Division; and Graduate School.

# Schedule of Missouri's Opponents—1969

DATES	SEPT. 13	SEPT. 20	SEPT. 27	OCT. 4	OCT. 11	OCT. 18
AIR FORCE	S.M.U. AT DALLAS	MISSOURI AT COLUMBIA	WYOMING AT AIR FORCE		N. CAROLINA AT CHAPEL HILL	OREGON AT AIR FORCE
ILLINOIS		WASHINGTON STATE AT CHAMPAIGN	MISSOURI AT ST. LOUIS	IOWA STATE AT CHAMPAIGN	NORTHWESTERN AT CHAMPAIGN	INDIANA AT BLOOMINGTON
MICHIGAN		VANDERBILT AT ANN ARBOR	WASHINGTON AT ANN ARBOR	MISSOURI AT ANN ARBOR	PURDUE AT ANN ARBOR	MICHIGAN ST. AT E. LANSING
NEBRASKA		U.S.C. AT LINCOLN	TEXAS A&M AT LINCOLN	MINNESOTA AT MINNEAPOLIS	MISSOURI AT COLUMBIA	KANSAS AT LINCOLN
OKLA. ST.		ARKANSAS AT LITTLE ROCK	HOUSTON AT STILLWATER	TEXAS TECH AT STILLWATER		MISSOURI AT COLUMBIA
COLORADO		TULSA AT BOULDER	PENN STATE AT PENN STATE	INDIANA AT BOULDER	IOWA STATE AT AMES	OKLAHOMA AT NORMAN
KANSAS ST.		BAYLOR AT WACO	ARIZONA AT TUCSON	PENN STATE AT MANHATTAN	KANSAS AT LAWRENCE	IOWA STATE AT MANHATTAN
OKLAHOMA		WISCONSIN AT MADISON	PITTSBURGH AT NORMAN		TEXAS AT DALLAS	COLORADO AT NORMAN
IOWA STATE		SYRACUSE AT SYRACUSE	BRIG. YOUNG AT AMES	ILLINOIS AT CHAMPAIGN	COLORADO AT AMES	KANSAS ST. AT MANHATTAN
KANSAS		TEXAS TECH AT LUBBOCK	SYRACUSE AT LAWRENCE	NEW MEXICO AT ALBUQUERQUE	KANSAS ST. AT LAWRENCE	NEBRASKA AT LINCOLN

OCT. 25	NOV. 1	NOV. 8	NOV. 15	NOV. 22	NOV. 29	
COLORADO ST. AT AIR FORCE	ARMY AT WEST POINT	UTAH ST. AT AIR FORCE	STANFORD AT PALO ALTO	NOTRE DAME AT SOUTH BEND		
OHIO STATE AT COLUMBUS	PURDUE AT CHAMPAIGN	MICHIGAN AT CHAMPAIGN	WISCONSIN AT MADISON	IOWA AT CHAMPAIGN		
MINNESOTA AT MINNEAPOLIS	WISCONSIN AT ANN ARBOR	ILLINOIS AT CHAMPAIGN	IOWA AT IOWA CITY	OHIO STATE AT ANN ARBOR		
OKLA. ST. AT LINCOLN	COLORADO AT LINCOLN	IOWA STATE AT LINCOLN	KANSAS ST. AT MANHATTAN	OKLAHOMA AT NORMAN		
NEBRASKA AT LINCOLN	KANSAS AT LAWRENCE	KANSAS ST. AT STILLWATER	COLORADO AT BOULDER	IOWA STATE AT AMES	OKLAHOMA AT STILLWATER	
MISSOURI AT BOULDER	NEBRASKA AT LINCOLN	KANSAS AT LAWRENCE	OKLA. ST. AT BOULDER	KANSAS ST. AT BOULDER		
OKLAHOMA AT MANHATTAN	MISSOURI AT COLUMBIA	OKLA. ST. AT STILLWATER	NEBRASKA AT MANHATTAN	COLORADO AT BOULDER		
KANSAS ST. AT MANHATTAN	IOWA STATE AT NORMAN	MISSOURI AT COLUMBIA	KANSAS AT NORMAN	NEBRASKA AT NORMAN	OKLA. ST. AT STILLWATER	
KANSAS AT AMES	OKLAHOMA AT NORMAN	NEBRASKA AT LINCOLN	MISSOURI AT AMES	OKLA. ST. AT AMES		
IOWA STATE AT AMES	OKLA. ST. AT LAWRENCE	COLORADO AT LAWRENCE	OKLAHOMA AT NORMAN	MISSOURI AT LAWRENCE		



Governor Hearnes and Coach Devine share a proud moment.

1968  
GATOR BOWL  
CHAMPIONS

University Libraries  
University of Missouri

## Digitization Information Page

Local identifier MizFootballGuide1969

### Source information

Format Book  
Content type Text with images  
Source ID University Archives C:31/00/8  
Notes

### Capture information

Date captured Jan 2024  
Scanner manufacturer Plustek OpticBook  
Scanner model A300 Plus  
Scanning system software Book Pavilion  
Optical resolution 600 dpi  
Color settings 24 bit color covers; 8 bit grayscale for the rest  
File types tiff  
Notes

### Derivatives - Access copy

Compression Tiff: LZW compression  
Editing software Adobe Photoshop 2023  
Resolution 600 dpi  
Color color covers; grayscale for the rest  
File types tiff  
Notes Images cropped, straightened, brightened